



# RESIDENTIAL GARDEN

## PLANTING DESIGN

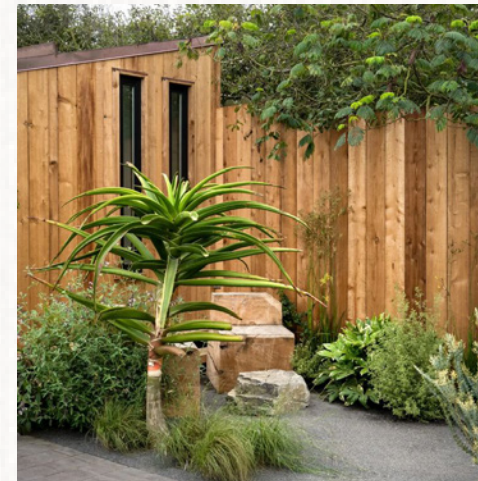
Zoë Marans • Landscape Design 5 • Pamela Brief • Spring 2025

# THEMATIC CONCEPT

GUIDING LANDSCAPE VISION

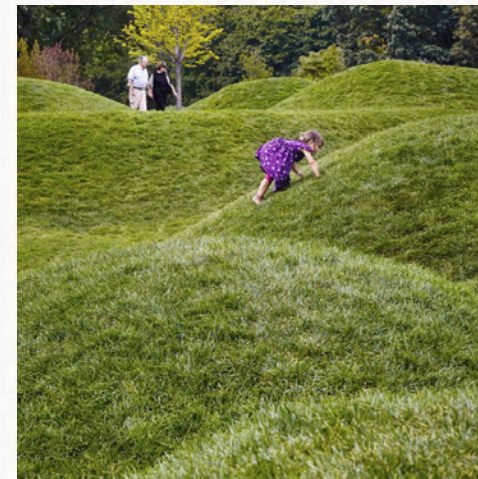


Welcome to the land of adventure! This landscape proposal transforms your suburban yard into a wild park for discovery, beauty, and escape. Unique, multipurpose outdoor spaces for kids, adults, and family friendly activities are defined by token trees set amongst rolling shrubs and grasses. The landscape also provides habitat for local wildlife, creating a mini Jurassic Park for the family to explore and connect with nature.



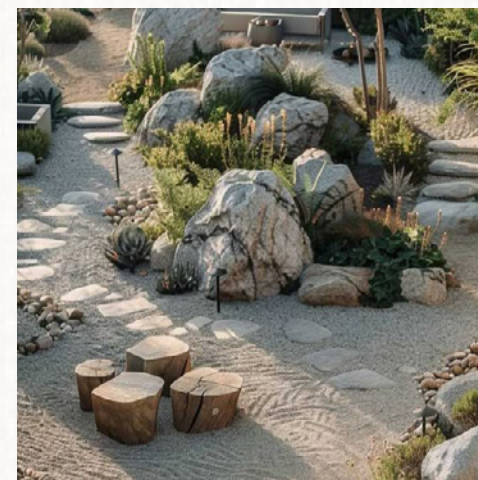
## ARCHITECTURAL PLANTS

Plant forms and individual leaf shapes tend to be large and robust, vertical or rigid, and lush. The drought-tolerant tropical look is achieved through pet and kid friendly succulents, textural grasses, and architectural shrubs, creating a visually interesting, resilient landscape.



## PLAYFUL DISCOVERY

Wandering gravel paths take you on a route of discovery, finding nooks to relax, features to play on, and plants to hide behind. Plant density is varied through the yard, with some areas denser and others more sparse, to create unique outdoor rooms for maximum enjoyment.

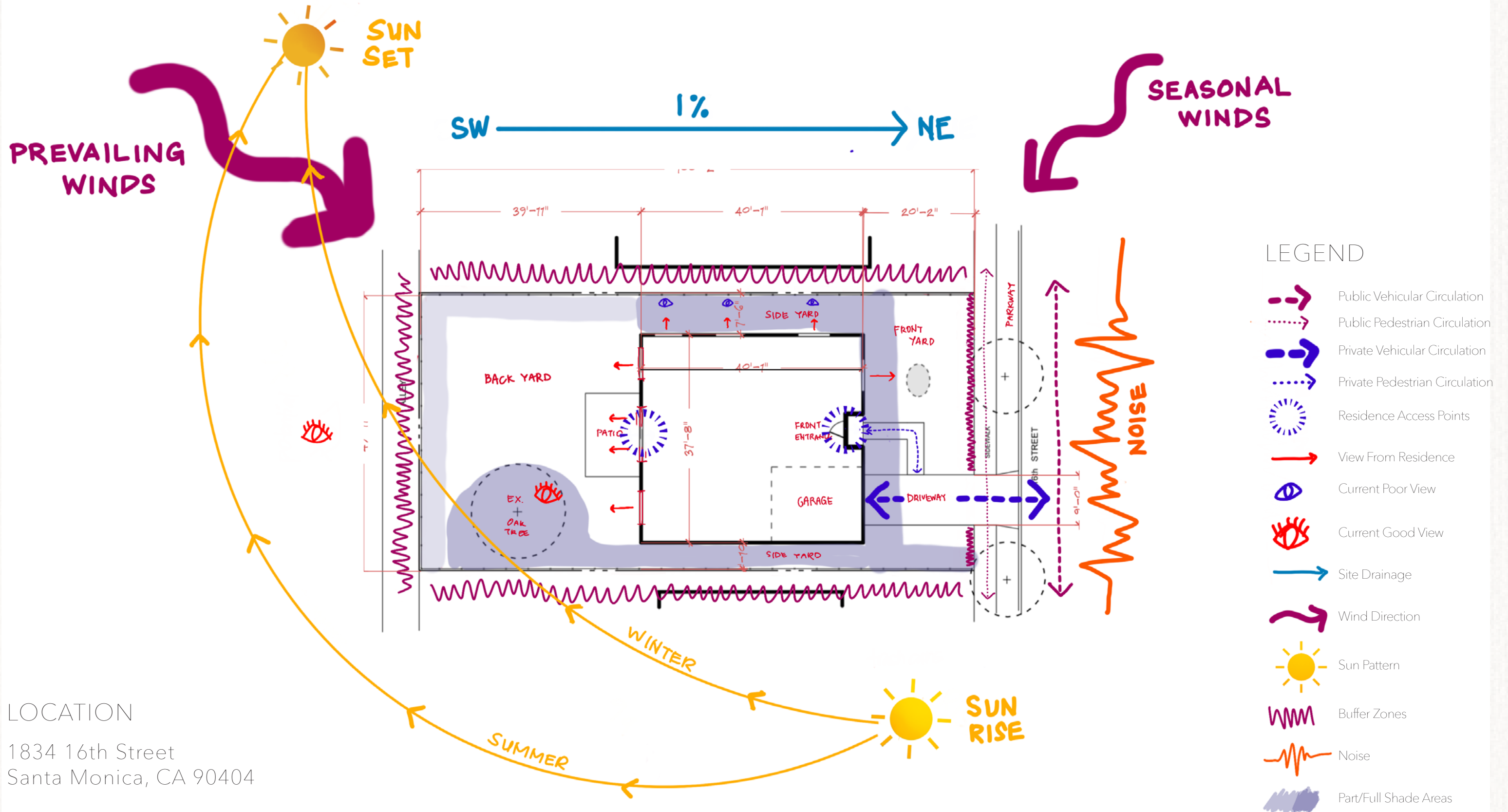


## ORGANIC MATERIALS

Natural stones, rocks, boulders, and gravel mix with reclaimed wood, stumps, and clay brick to ground your outdoor experience and contrast with green foliage. Materials are sourced locally for sustainable design.

# SITE ANALYSIS

## CIRCULATION & PHYSICAL CONDITIONS



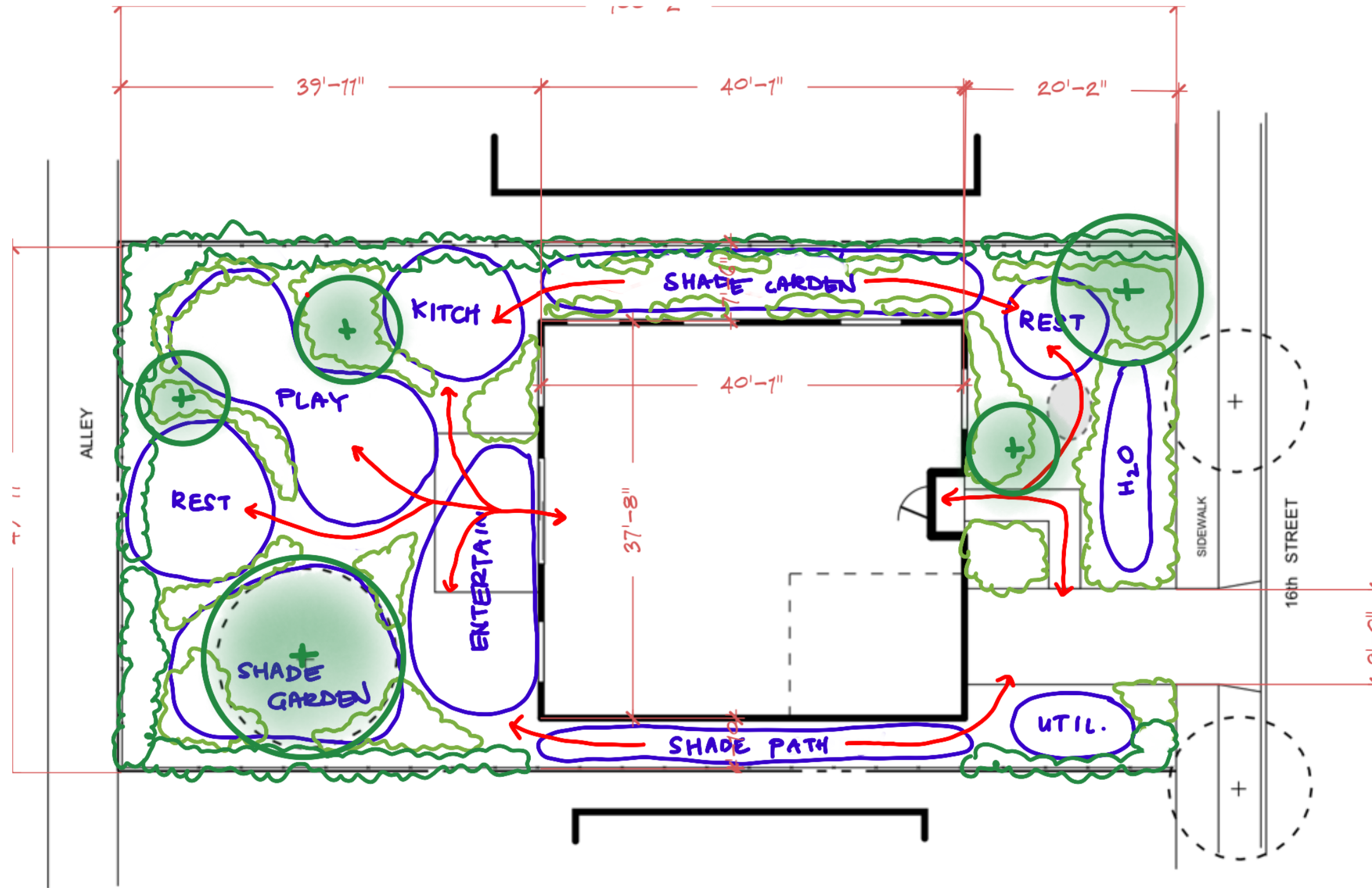
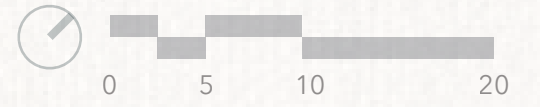
### LOCATION

1834 16th Street  
Santa Monica, CA 90404

Sunset Climate Zone 24

# CONCEPTUAL BUBBLE DIAGRAM

SPATIAL LAYOUT



# DESIGN INSPIRATION

PLAYFUL, ORGANIC, EARTHEN



# PLANT PALETTE

CURATED PLANT RECOMMENDATIONS



*Brachychiton rupestris*  
Queensland Bottle Tree



*Aloe barberae*  
Tree Aloe



*Podocarpus henkelii*  
Long-Leafed Yellowwood



*Pachycereus marginatus*  
Mexican Fence Post Cactus



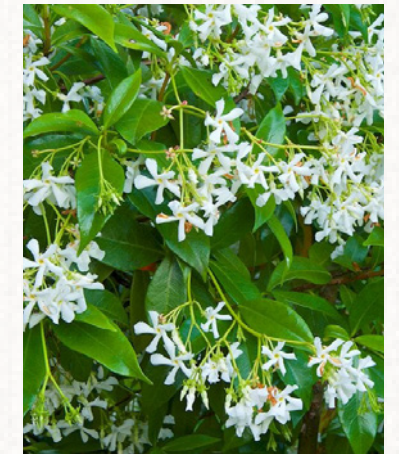
*Kalanchoe beharensis*  
Velvet Elephant Ear



*Aloe marlothii*  
Mountain Aloe



*Leucadendron x 'Jester'*  
Jester Conebush



*Trachelospermum jasminoides*  
Star Jasmine



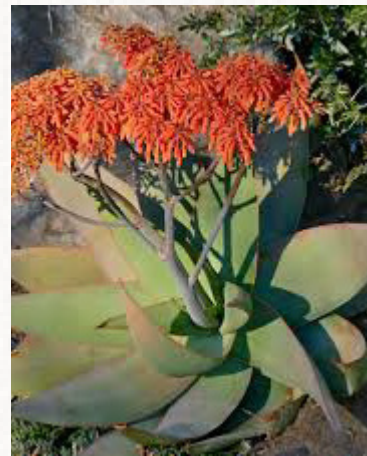
\**Rhamnus californica* 'Mound San Bruno'  
Mound San Bruno Coffeeberry



*Tagetes lemmonii* 'Compacta'  
Compact Mexican Marigold



*Agave attenuata* 'Ray of Light'  
Variegated Foxtail Agave



*Aloe striata*  
Coral Aloe



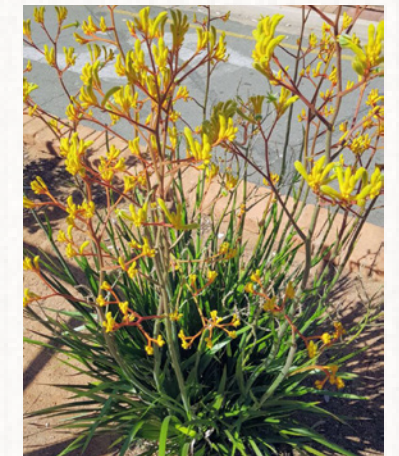
*Adenanthos sericeus*  
Coast Woolly Bush



\**Eriogonum arborescens*  
Santa Cruz Island Buckwheat



\**Epilobium canum*  
California Fuchsia



*Anigozanthos* 'Yellow Gem'  
Yellow Red Kangaroo Paw



*Aeonium arboreum* 'Zwartkop'  
Black Rose Aeonium



\**Asclepias fascicularis*  
Narrow Leaf Milkweed



\**Dudleya brittonii*  
Giant Chalk Dudleya



\**Juncus patens* 'Elk Blue'  
Elk Blue California Rush



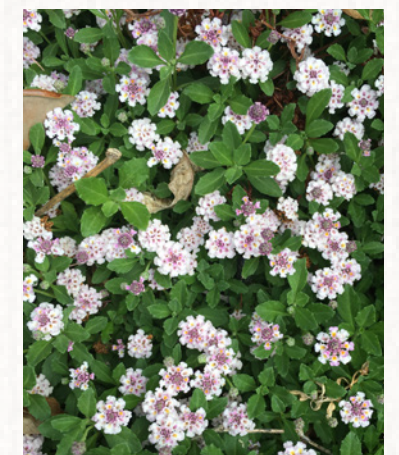
\**Muhlenbergia rigens*  
Deer Grass



*Muhlenbergia dubia*  
Pine Muhly



\**Festuca rubra* blend  
No-Mow CA Native Fescue

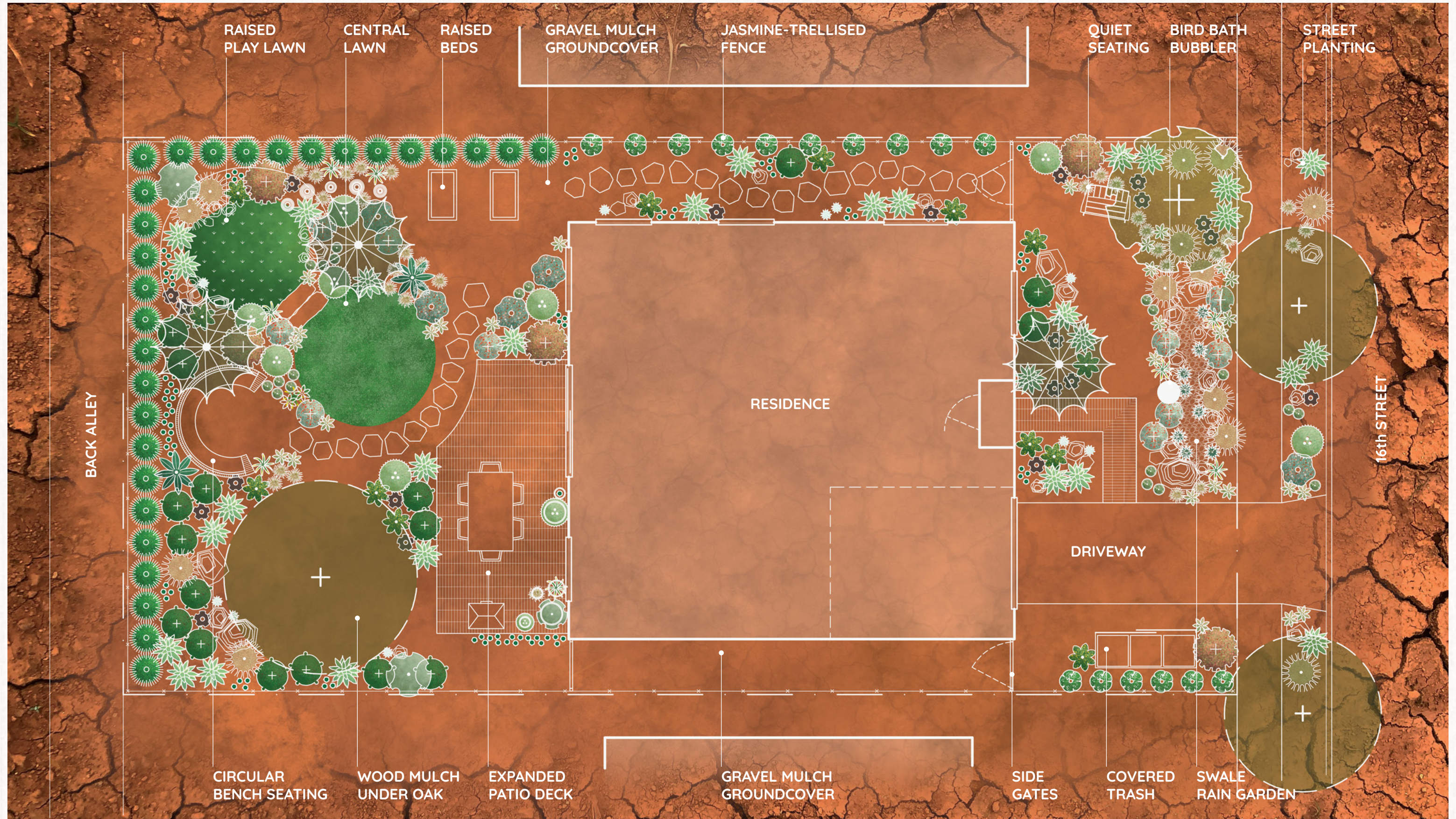
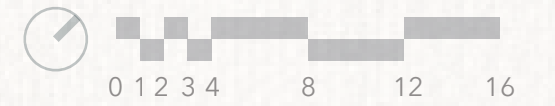


\**Phyla nodiflora*  
Turkey Tangle Frogfruit

\*California Native Plant Species

# PLANTING LAYOUT

SITE DESIGN



# PLANT SCHEDULE

## SIZE & QUANTITIES



SYMBOL	CODE	BOTANICAL NAME	COMMON NAME	CONTAINER	TYPE	CA NATIVE	QTY
<b>TREES</b>							
	ALO BRB	Aloe barberae	Tree Aloe	24" Box	Standard		3
	BRA RUP	Brachychiton rupestris	Queensland Bottle Tree	24" Box	Standard		1
<b>SHRUBS</b>							
	ADE SER	Adenanthos sericeus	Coastal Woollybush	5 Gal	Regular		10
	ERI ARB	Eriogonum arborescens	Santa Cruz Island Buckwheat	15 Gal	Regular	Yes	5
	LEU JES	Leucadendron x 'Jester'	Jester Conebush	15 Gal	Regular		5
	POD HEN	Podocarpus henkelii	Long Leafed Podocarpus	15 Gal	Regular		29
	RHA MOU	Rhamnus californica 'Mound San Bruno'	Mound San Bruno Coffeeberry	15 Gal	Regular	Yes	17
<b>ORNAMENTAL GRASSES</b>							
	JUN ELK	Juncus patens 'Elk Blue'	Spreading Rush	1 Gal	Regular	Yes	8
	MUH DUB	Muhlenbergia dubia	Pine Muhly	1 Gal	Regular		32
	MUH RIG	Muhlenbergia rigens	Deer Grass	5 Gal	Regular	Yes	13
<b>PERENNIALS</b>							
	ANI YEL	Anigozanthos x 'Yellow Gem'	Yellow Gem Kangaroo Paw	5 Gal	Regular		8
	ASC FAS	Asclepias fascicularis	Narrowleaf Milkweed	1 Gal	Regular	Yes	20
	EPI CAN	Epilobium canum	California Fuchsia	5 Gal	Regular	Yes	10
	TAG LEM	Tagetes lemmonii 'Compacta'	Compact Copper Canyon Daisy	5 Gal	Regular		13
<b>SUCCULENTS</b>							
	AEO ZWT	Aeonium x 'Zwartkop'	Zwartkop Aeonium	5 Gal	Regular		20
	AGA RAY	Agave attenuata 'Ray of Light'	Ray of Light Foxtail Agave	5 Gal	Regular		30
	ALO MAR	Aloe marlothii	Mountain Aloe	15 Gal	Regular		2
	ALO STR	Aloe striata	Coral Aloe	5 Gal	Regular		30
	DUD BRI	Dudleya brittonii	Giant Chalk Dudleya	5 Gal	Regular	Yes	10
	KAL BEH	Kalanchoe beharensis	Felt Plant	15 Gal	Regular		3
	PAC MAR	Pachycereus marginatus	Mexican Fence Post Cactus	5 Gal	Regular		28
<b>VINES</b>							
	TRA JAS	Trachelospermum jasminoides	Star Jasmine	5 Gal	Staked		16
SYMBOL	CODE	BOTANICAL NAME	COMMON NAME	CONTAINER	CA NATIVE		QTY
<b>GROUND COVERS</b>							
	FES NMW	Festuca x 'Delta Bluegrass Native Mow Free'	Delta Bluegrass Native Mow Free Fescue	Sod	Yes		79 sf
	PHY NOD	Phyla nodiflora	Lippia	Plugs	Yes		113 sf



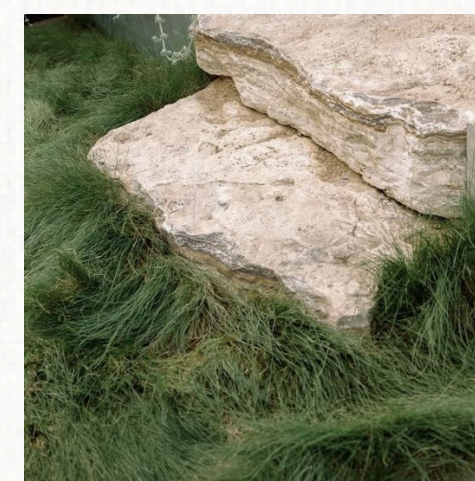
### SEASONAL POLLINATOR PLANTS

Flowering shrubs, perennials, and succulents are incorporated throughout the entire landscape to provide dynamic colorful blooms that attract pollinators like butterflies, bees, and hummingbirds. Variety of different bloom seasons to ensure overlapping color year round: Aloes & Leucadendron in winter, Jasmine, Aeonium, and Buckwheat in Spring, Kangaroo Paw and Milkweed in Summer, and Marigold and Fuchsia in Fall.



### DEFENSIBLE SUCCULENTS

One third of plant material are water-retaining succulents, great for fire resistant landscapes as they do not catch fire as easily as drier foliage plants. These species are throughout the yard, with special attention to areas close to the house to avoid fire ladders or high combustion tinder. Care was given to select species with minimal spikes for pet and kid safety.



### DROUGHT TOLERANT GROUNDCOVERS

Forgo the typical water-heavy grass for two climate adapted and California Native groundcovers: soft festuca blend and hardy lippia. Both are tolerant to foot traffic, require little maintenance or mowing, and provide a soft space for pets and kids to play on.

# PLANT INDEX

## INDIVIDUAL PLANT INFO



LATIN PLANT NAME	BOTANICAL PLANT NAME	ORIGIN	MATURE HEIGHT	MATURE WIDTH	WUCOLS	SUN/SHADE	BLOOM COLOR & SEASON
<i>Aloe barberae</i>	Tree Aloe	South Africa	20' - 30'	10' - 20'	1 - Very Low	Sun or Part Shade	Coral, Winter
<i>Brachychiton rupestris</i>	Queensland Bottle Tree	Australia	20' - 40'	15' - 30'	2 - Low	Sun	Light Red, Summer
<i>Podocarpus henkelii</i>	Long-Leafed Yellowwood	South Africa	10' - 40'	4' - 25'	3 - Moderate*	Sun or Part Shade	-
<i>Pachycereus marginatus</i>	Mexican Fence Post Cactus	Mexico	10' - 15'	3' - 8'	1 - Very Low	Sun or Shade	White/Red, Spring
<i>Kalanchoe beharensis</i>	Velvet Elephant Ear	Madagascar	10' - 15'	5' - 10'	2 - Low	Sun or Shade	Green Brown, Spring/Summer
<i>Aloe marlothii</i>	Mountain Aloe	South Africa	5' - 10'	2' - 4'	2 - Low	Sun or Part Shade	Marigold, Winter
<i>Leucadendron x 'Jester'</i>	Jester Conebush	South Africa	4' - 5'	4' - 5'	2 - Low	Sun	Coral, Spring/Summer/Fall/Winter
<i>Trachelospermum jasminoides</i>	Star Jasmine	China	2' - 20'	2' - 8'	3 - Moderate*	Sun or Shade	White, Spring/Summer
<i>Rhamnus californica 'Mound San Bruno'</i>	Mound San Bruno Coffeeberry	California, US	3' - 4'	5' - 10'	1 - Very Low	Sun or Shade	Yellow, Spring
<i>Tagetes lemmonii 'Compacta'</i>	Compact Mexican Marigold	Mexico	2' - 3'	2' - 3'	2 - Low	Sun or Shade	Yellow, Spring/Summer/Fall/Winter
<i>Agave attenuata 'Ray of Light'</i>	Variiegated Foxtail Agave	Mexico	3' - 5'	4' - 8'	1 - Very Low	Sun or Shade	Cream, Spring
<i>Aloe striata</i>	Coral Aloe	South Africa	2' - 3'	1' - 2'	2 - Low	Sun	Coral, Winter/Spring
<i>Adenanthos sericeus</i>	Coast Woolly Bush	Australia	4' - 8'	3' - 6'	2 - Low	Sun	Red, Spring
<i>Eriogonum arborescens</i>	Santa Cruz Island Buckwheat	California, US	2' - 3'	3' - 5'	1 - Very Low	Sun	Cream, Spring/Summer - Rust, Fall
<i>Epilobium canum</i>	California Fuchsia	California, US	1' - 2'	2' - 3'	1 - Very Low	Sun	Red, Summer/Fall
<i>Anigozanthos 'Yellow Gem'</i>	Red-Yellow Kangaroo Paw	Australia	4' - 5'	1' - 2'	2 - Low	Sun	Yellow, Spring/Summer/Fall
<i>Aeonium arboreum 'Zwartkop'</i>	Black Rose Aeonium	Africa	2' - 4'	1' - 3'	2 - Low	Sun or Shade	Yellow, Spring
<i>Asclepias fascicularis</i>	Narrowleaf Milkweed	California, US	2' - 3'	2' - 3'	1 - Very Low	Sun	Cream, Summer/Fall
<i>Dudleya brittonii</i>	Giant Chalk Dudleya	California, US	1'	1'	1 - Very Low	Sun or Shade	Coral, Summer
<i>Juncus patens 'Elk Blue'</i>	Elk Blue California Rush	California, US	1' - 2'	1' - 2'	3 - Moderate*	Sun or Shade	Brown, Spring/Summer/Fall
<i>Muhlenbergia rigens</i>	Deer Grass	California, US	3' - 5'	3' - 6'	2 - Low	Sun or Shade	Tan, Summer/Fall
<i>Muhlenbergia dubia</i>	Pine Muhly	Southwest, US	1' - 3'	2' - 3'	2 - Low	Sun	Tan, Summer/Fall
<i>Festuca rubra blend</i>	No-Mow CA Native Fescue	California, US	6" - 1'	spreading	2 - Low	Sun or Shade	-
<i>Phyla nodiflora</i>	Turkey Tangle Frogfruit	California, US	1" - 6"	spreading	2 - Low	Sun or Part Shade	White, Spring/Summer/Fall

\*Species has proved more drought tolerant in Santa Monica, CA than WUCOLS rating

# FRONT YARD

PERSPECTIVE RENDERING



View of front of house from sidewalk, with Tree Aloe framing front door



Front walkway with bird bubbler bath and dry swale rain garden on right



Front Yard with Aloe Tree framing window on left, and casual seating under Queensland Bottle Tree on right, near side gate



View of front yard from front door, looking at bird bubbler bath and dry swale rain garden. Street planting in background

# BACK YARD

PERSPECTIVE RENDERING



Back yard Lippia lawn with pavers to curved bench on left, raised edible garden on right. Stone steps to fescue lawn between Tree Aloes



View from raised fescue play lawn in west corner of back yard, enclosed by two Tree Aloes



View from circular sofa bench, enclosed by Tree Aloe and existing Oak Tree



Extended patio with outdoor dining, freestanding BBQ, and decorative pots. Existing Oak Tree with mulch understory on right

# DETAILS

## PERSPECTIVE RENDERING



Hidden salvaged tree trunk steps to upper fescue lawn



Edible raised bed garden in back yard



Side Yard pathway with meandering flagstone pavers, jasmine trellised fence, and shade tolerant plants



Trash enclosure in front side yard with sweet-smelling jasmine trellised on fence

# NIGHT LIGHTING

PERSPECTIVE RENDERING



Front Yard at night with minimal path lighting and spotlights on 3 vertical elements: Tree Aloe, Queensland Bottle Tree, & Fence Cactus



Front Yard at night from driveway



Back Yard at night with minimal path lights, Tree Aloe spotlights, and strings lights above outdoor dining patio



Back Yard at night with minimal path lights, Tree Aloe spotlights, and string lights above outdoor dining patio



THANK YOU!

RESIDENTIAL GARDEN PLANT DESIGN

Zoë Marans • Landscape Design 5 • Pamela Brief • Spring 2025