

SISTERS OF SOCIAL SERVICE

A HEALING JOURNEY THROUGH NATURE

VICTORIA STOVER
LANDSCAPE DESIGN 5 - ARCH X 472.5
INSTRUCTOR: PAMELA BRIEF
5/14/25



INTRODUCTION



SISTERS OF SOCIAL SERVICE

The Sisters of Social Service provide a healing retreat to their community. The sisters live on the campus and provide a great service to the community by offering a space for people of all walks of life into their space to heal. They have a vision and goal to create a “campus of integral ecology.”

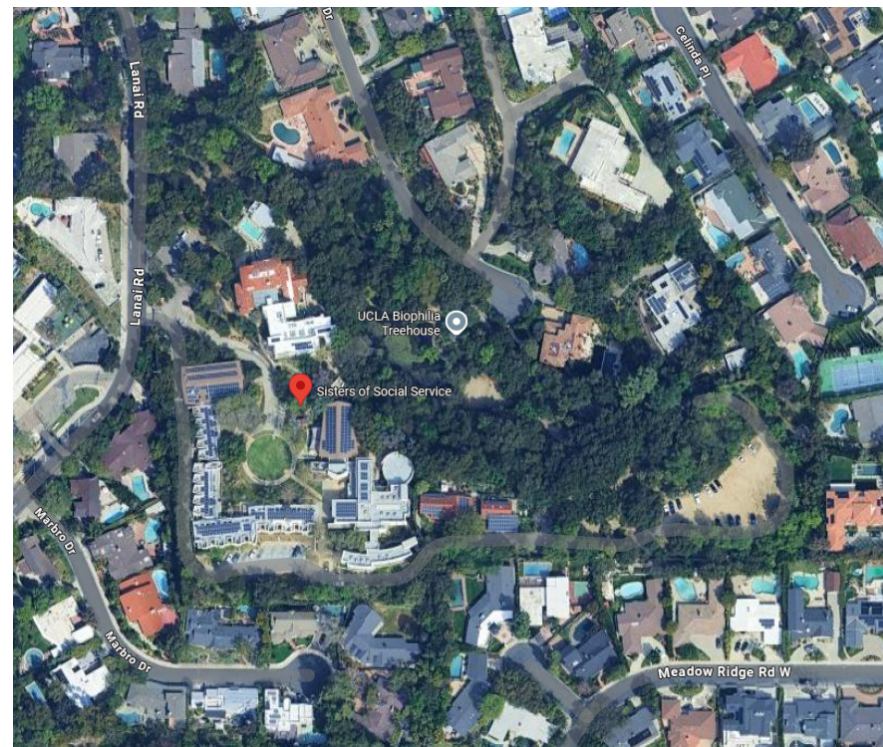
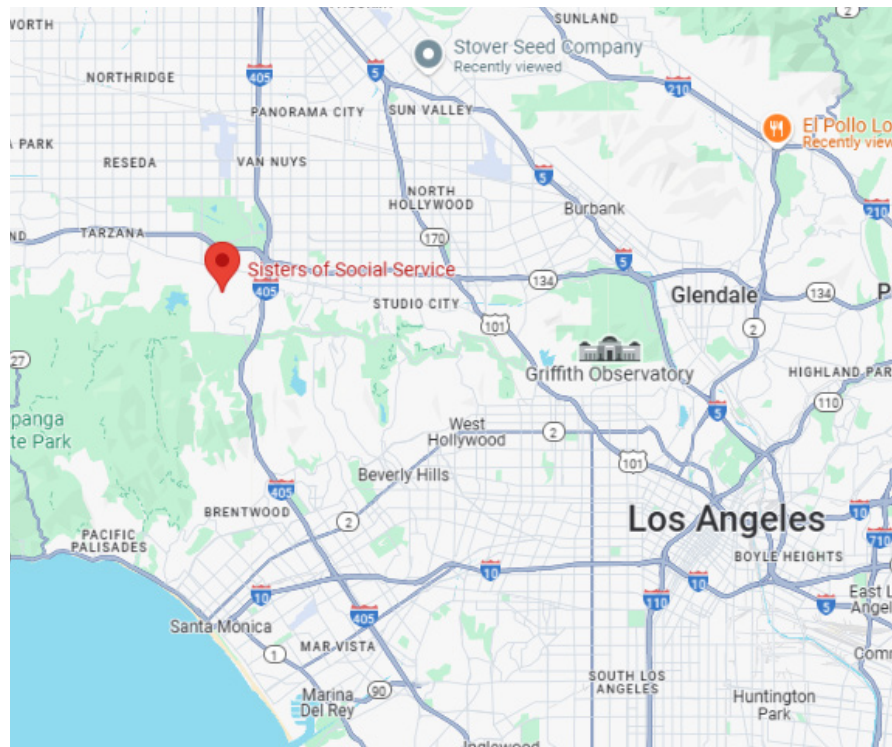
Location: 4316 Lanai Rd, Encino, CA 91436

Size: 10.5 Acres

Sunset Climate Zone 18/19

WUCOLS Region 3

Soil: Clay Loam

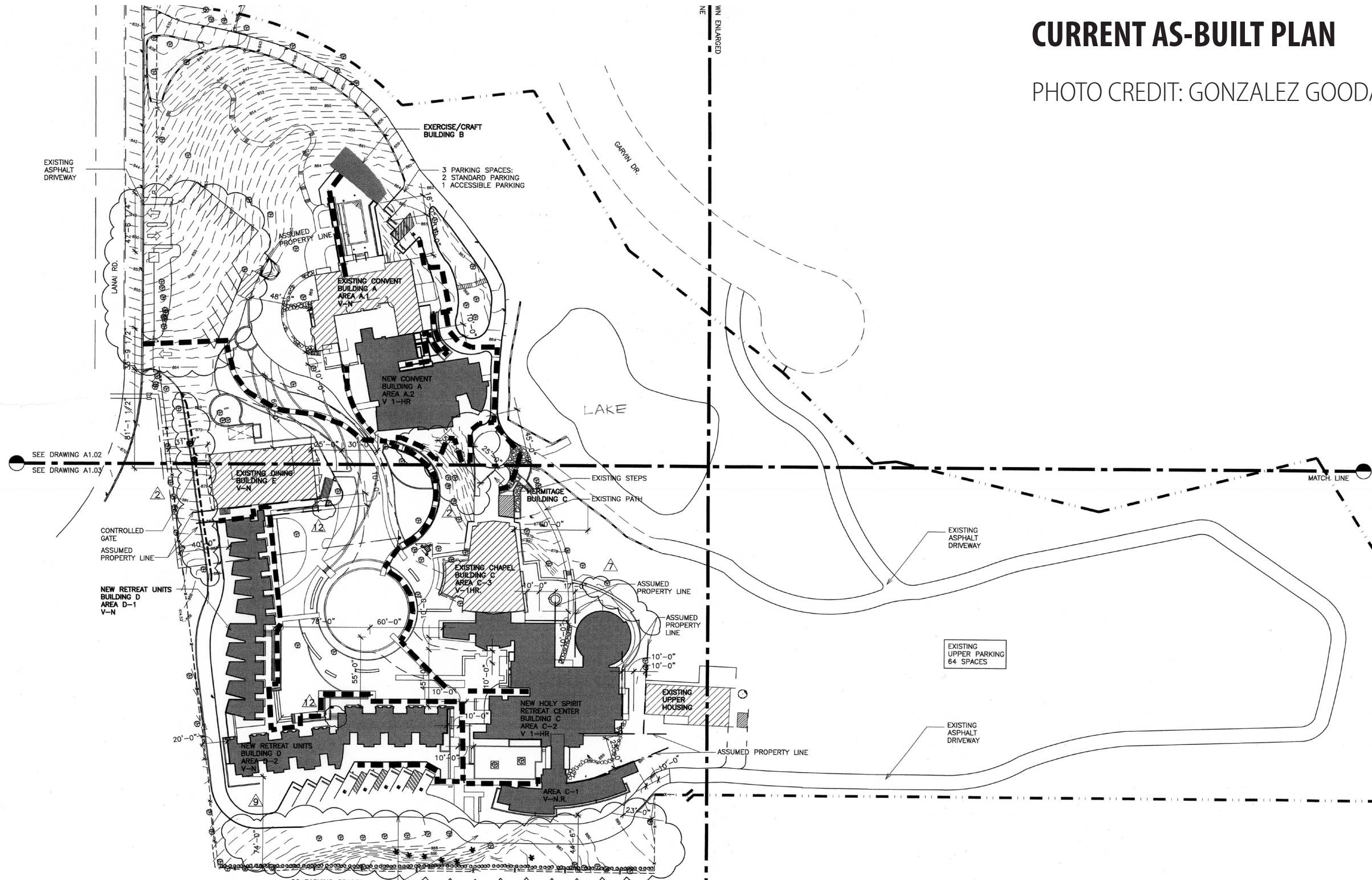


Site History: Site was the previous home of the Tongva people. After colonization, the site was a citrus farm with built pond that was used for irrigation. It became a retreat center with building spaces to accommodate overstaying guests, administration buildings, spaces for worship, and the sisters reside in the historic building. Ornamental plants have been used for landscaping around the buildings. A large amount of the site remains undeveloped and old growth coast live oaks remain through the site development phases.

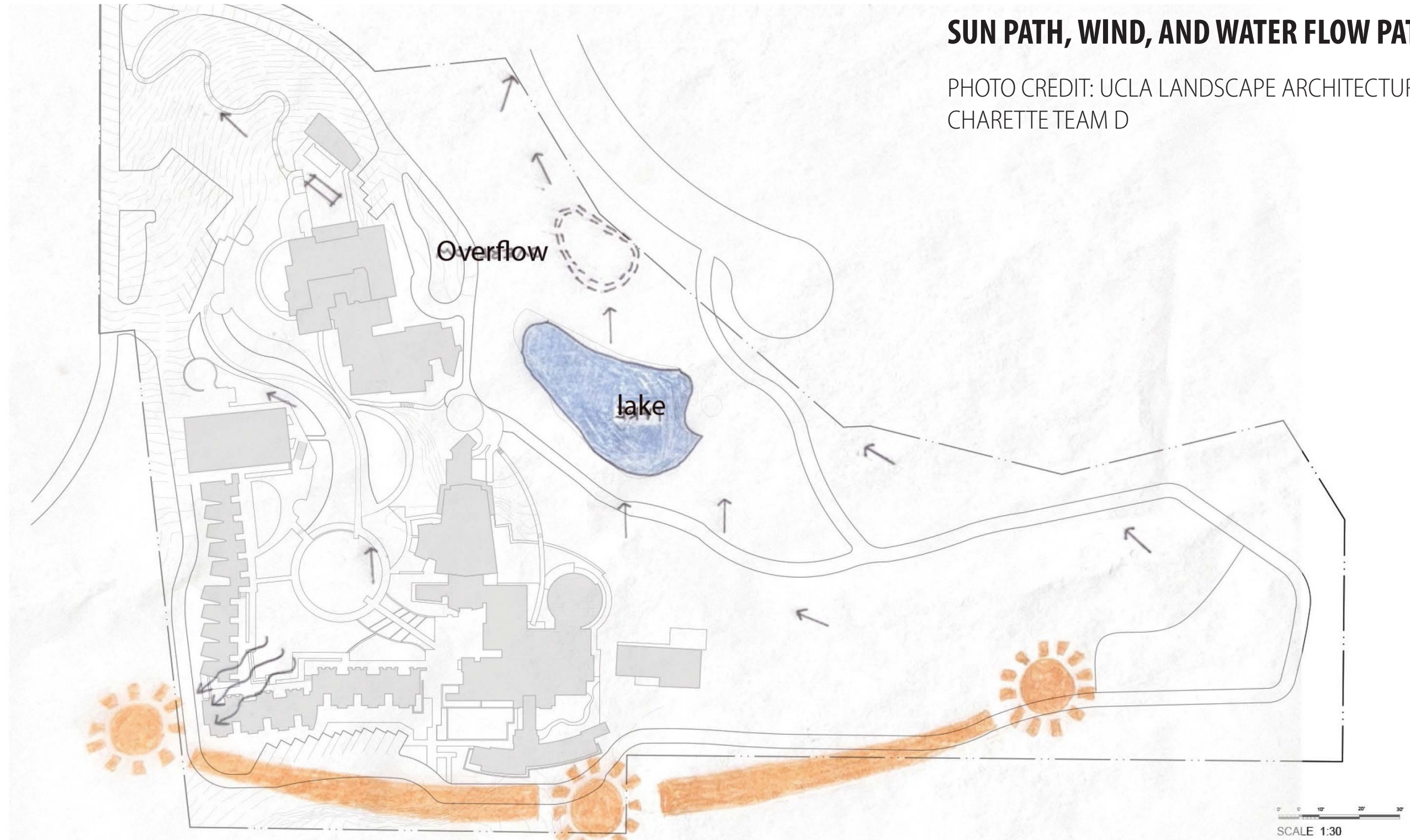
SITE ANALYSIS

CURRENT AS-BUILT PLAN

PHOTO CREDIT: GONZALEZ GOODALE



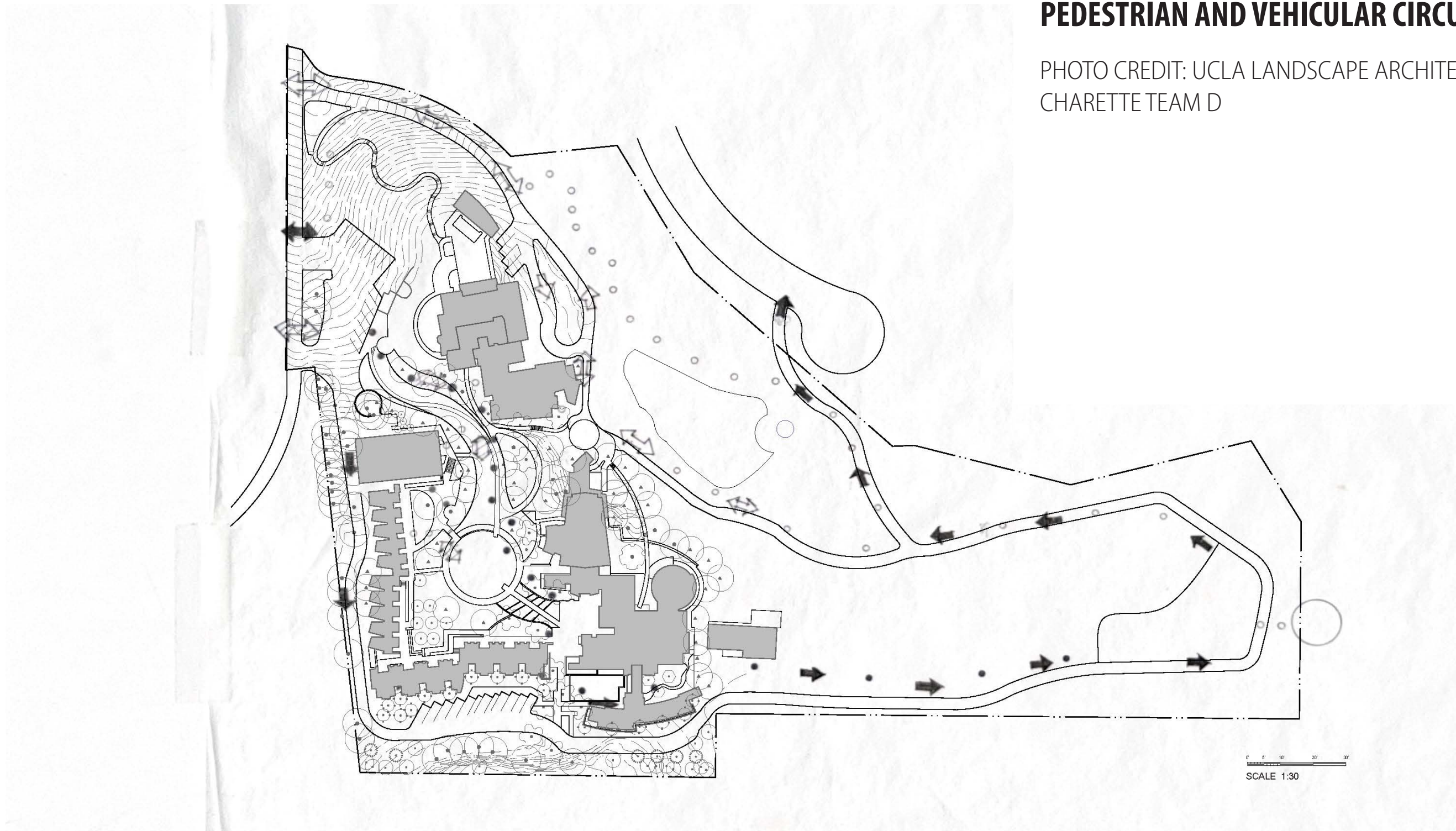
SITE ANALYSIS



SITE ANALYSIS

PEDESTRIAN AND VEHICULAR CIRCULATION

PHOTO CREDIT: UCLA LANDSCAPE ARCHITECTURE
CHARENTE TEAM D



BIG IDEA



HEALING JOURNEY THROUGH NATURE

NATURE PROVIDES EVERYTHING WE NEED
NATURE PROVIDES EVERYTHING WE KNOW
NATURE IS LIFE, PEACE, SHELTER, AIR, FOOD, WATER
NATURE IS INSPIRING, BEAUTIFUL, LOVING AND RESILIENT
NATURE IS NOURISHING
NATURE IS HEALING

DESIGN GOALS

- HEALING AND NOURISHING
- RECONNECT WITH NATURE
- CALIFORNIA BASED DESIGN
- INSPIRE FEELINGS THAT SUPPORT HEALING
- SHARE MOMENTS FROM MY PERSONAL EXPERIENCE

CONCEPTUAL PLAN



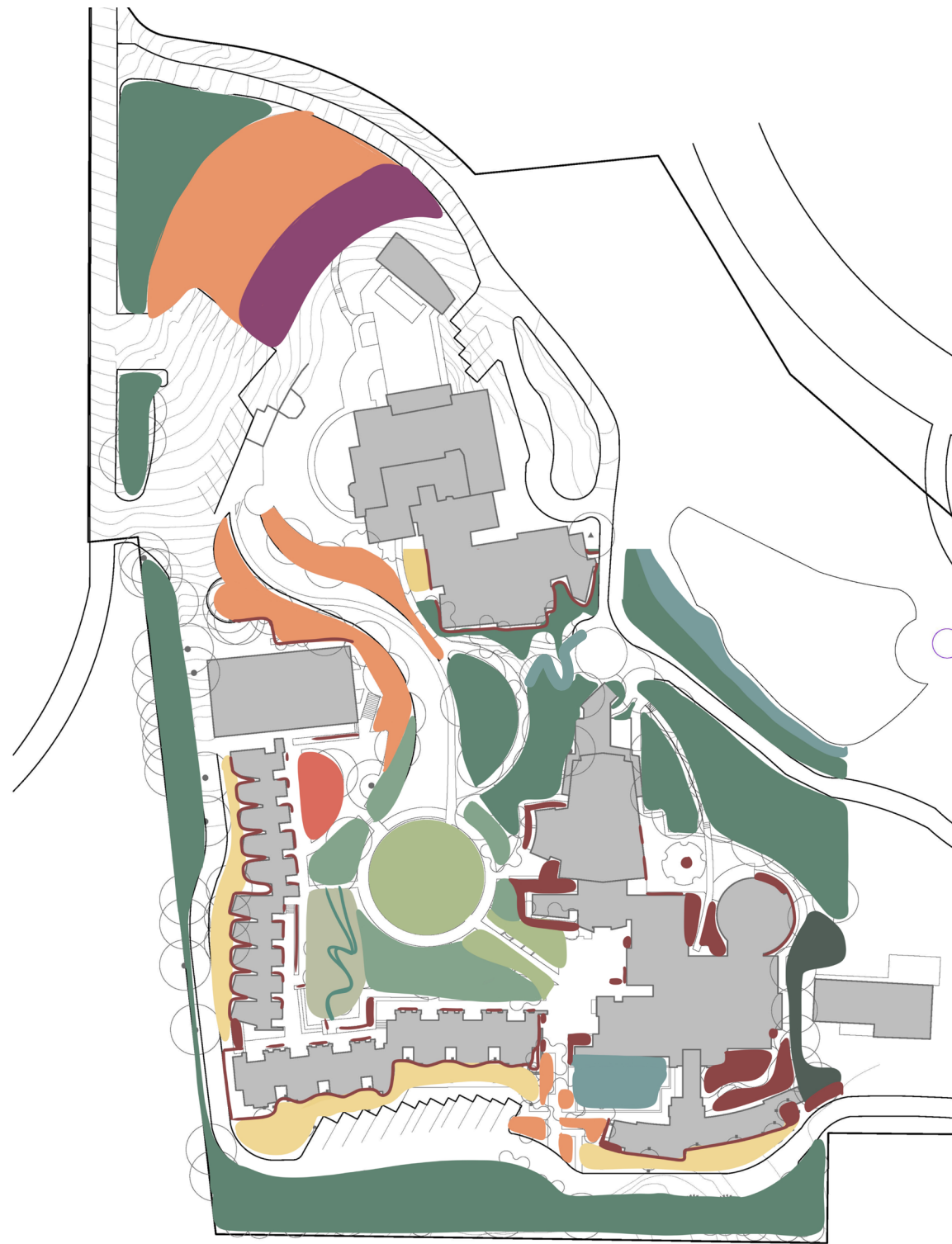
BUBBLES AND CIRCULATION

COLORS (PRIMARY BUBBLES)
REPRESENT THE SPACES INSPIRED BY UNIQUE **MOMENTS** IMPORTANT TO HEALING FOUND IN THE ECOSYSTEMS AND PLACES OF CALIFORNIA

HATCHES (SECONDARY BUBBLES)
REPRESENT **HEIGHTS OF THE PLANTS** WITHIN EACH OF THE PRIMARY BUBBLES. TREES ARE INCLUDED HERE AS THEY ALSO ADD AN ADDITIONAL LAYER OF CANOPY. THE HEIGHTS WERE CALCULATED ACCORDING TO FIRE SAFETY ZONES

DOTTED LINE (PEDESTRIAN CIRCULATION)
REPRESENTS THE **JOURNEY** VISITORS TAKE THROUGH THE DESIGNED SPACE AS PEDESTRIANS

CONCEPTUAL PLAN



COLORS: PRIMARY BUBBLES

REPRESENT THE SPACES INSPIRED BY UNIQUE **MOMENTS** IN THE ECOSYSTEMS AND PLACES OF CALIFORNIA THAT INSPIRE THEIR OWN FEELINGS TO SUPPORT HEALING

- RAISED BEDS
- BUILDING-FRIENDLY PLANTS
- HILLTOP
- WELCOMING ORCHARD
- ROAD-SIDE WILDFLOWERS
- STREAMSIDE MEADOW
- WALKABLE MEADOW
- SAGEBRUSH SENSORY BASIN
- WOODLAND UNDERSTORY
- WATER-FRIENDLY PLANTS
- SCREENING

HEALING JOURNEY



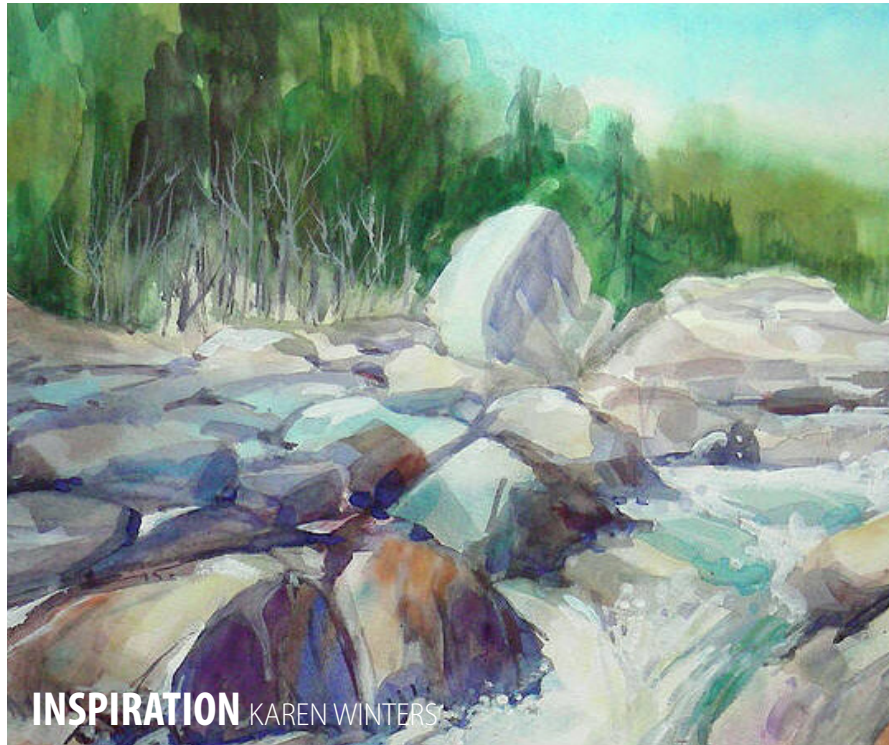
WELCOMING NOURISHMENT

- FACILITATE CONNECTION WITH NATURE
- PROVIDING NOURISHMENT FROM NATURE
- INSPIRED BY CALIFORNIA'S AGRICULTURAL HERITAGE

- RAISED BEDS
- WELCOMING ORCHARD



HEALING JOURNEY

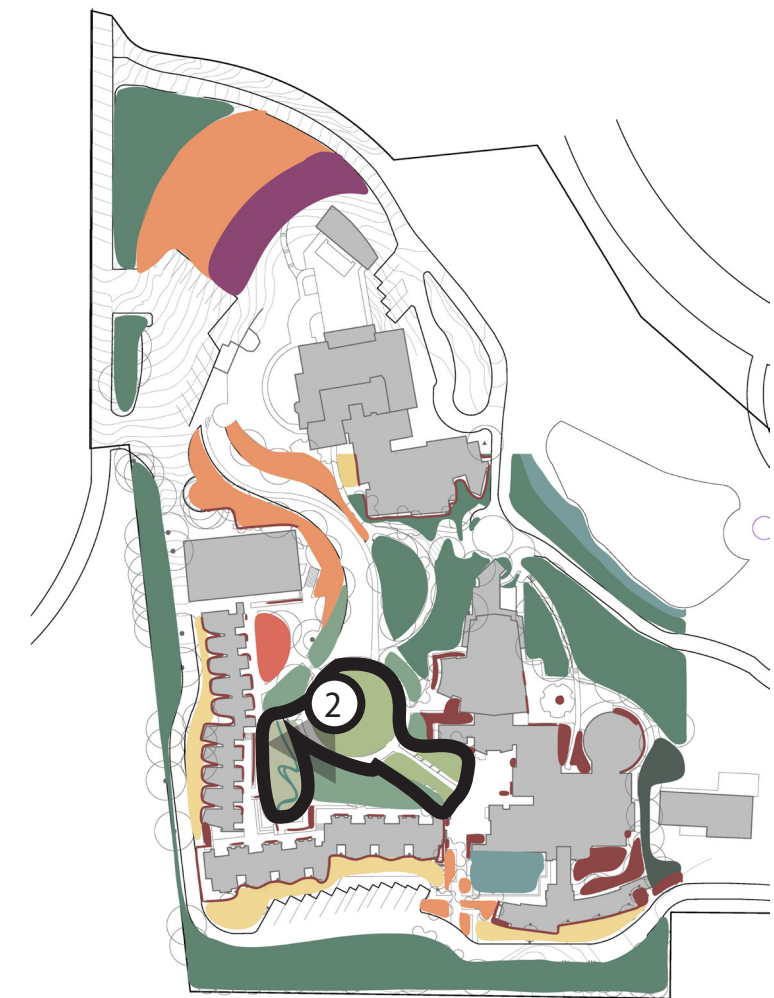
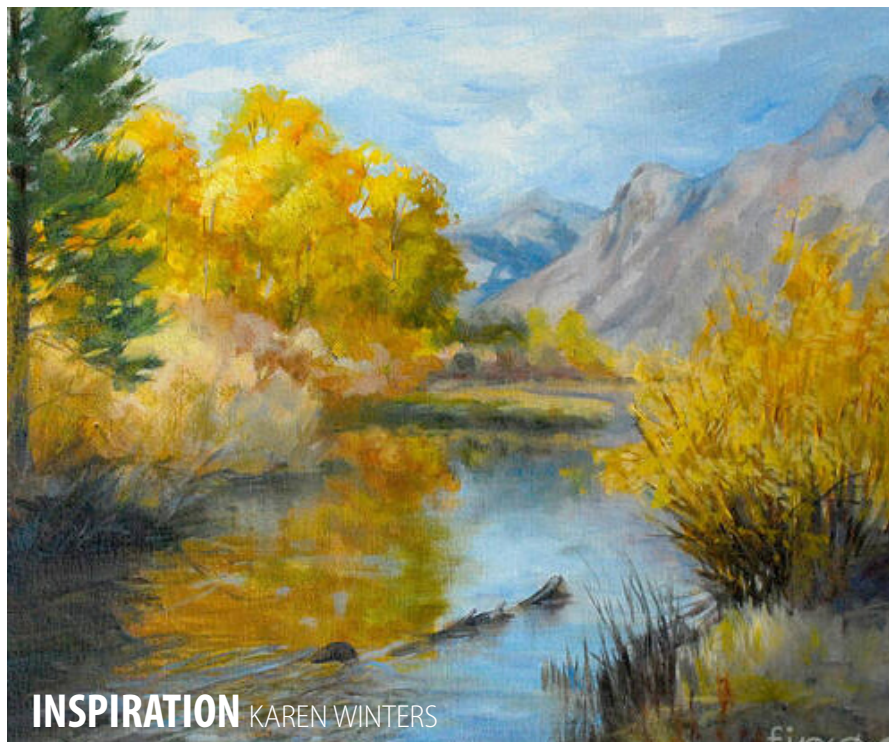


SENSE OF CALM AND WONDER

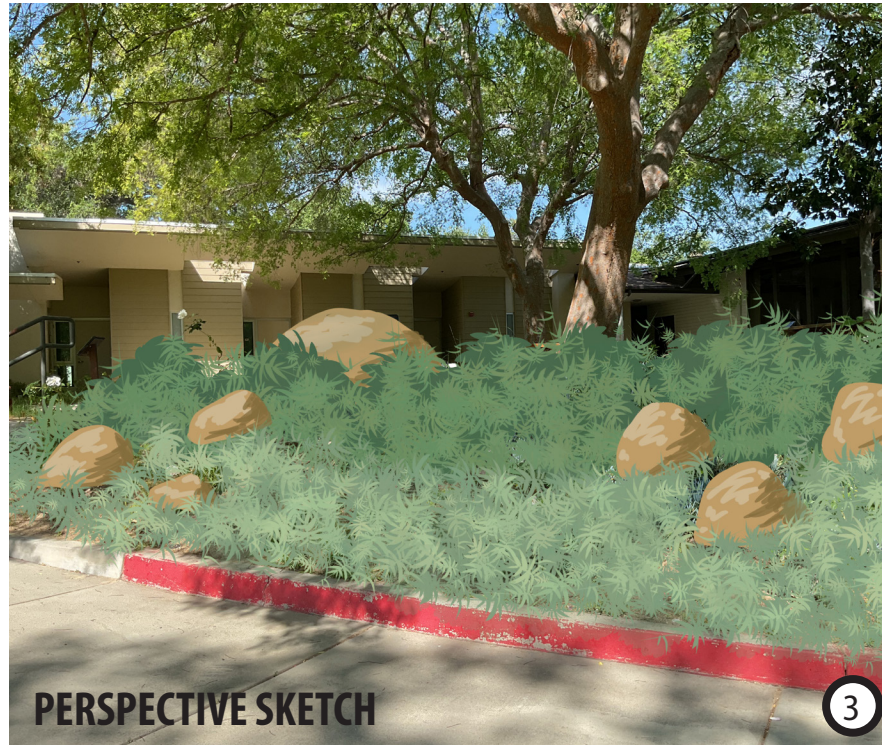
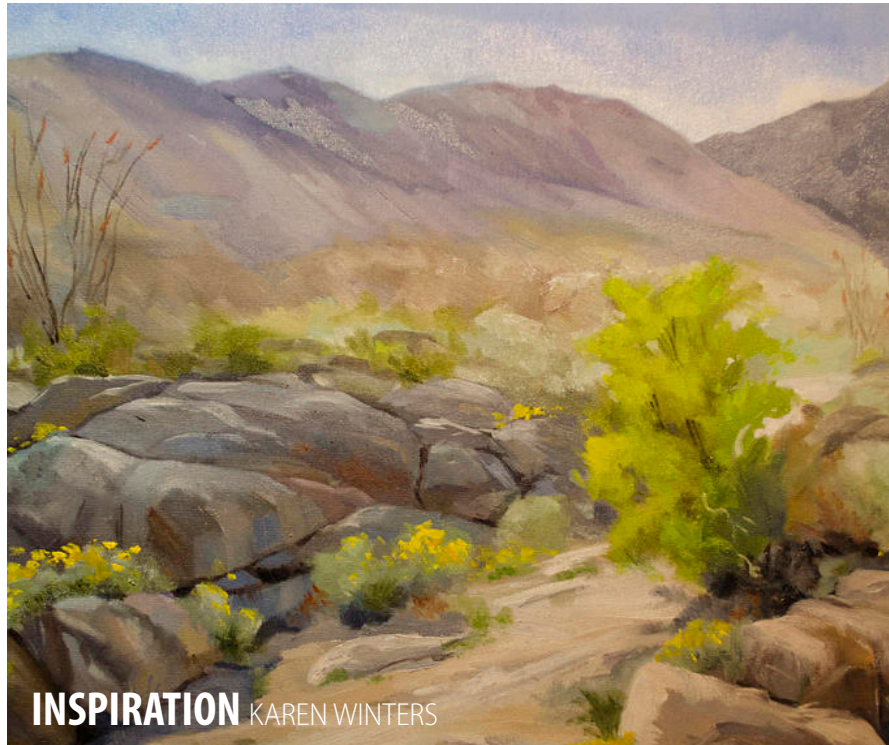
- CREATE A WELCOMING CENTRAL SPACE FOR GATHERING
- INVITES SLOWING DOWN AND LISTENING TO WATER
- INSPIRED BY CALIFORNIA'S MEADOWS AND STREAMS

● STREAMSIDE MEADOW

● WALKABLE MEADOW



HEALING JOURNEY

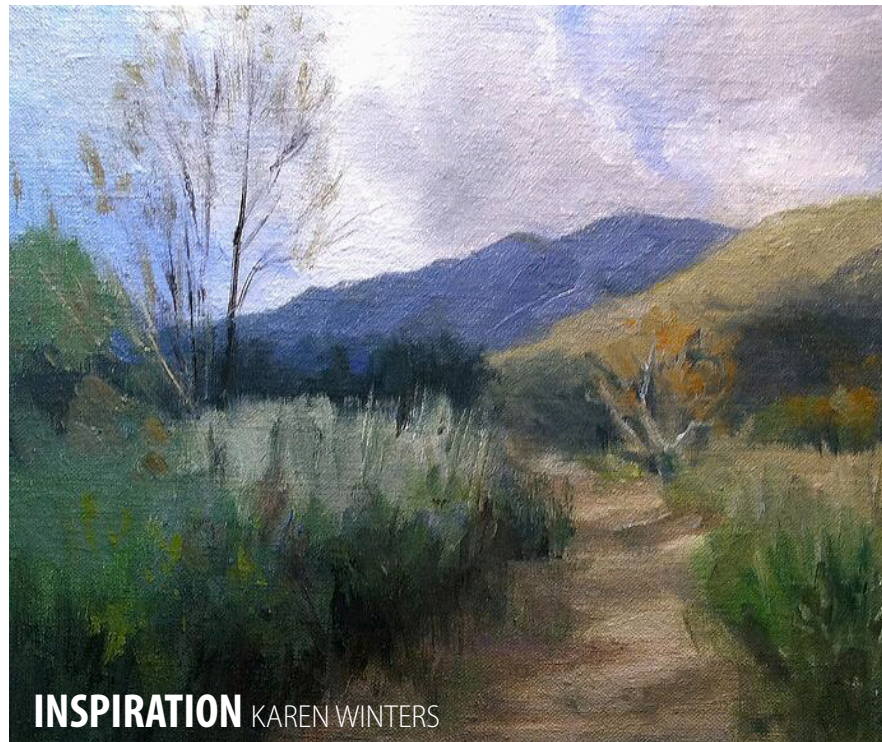
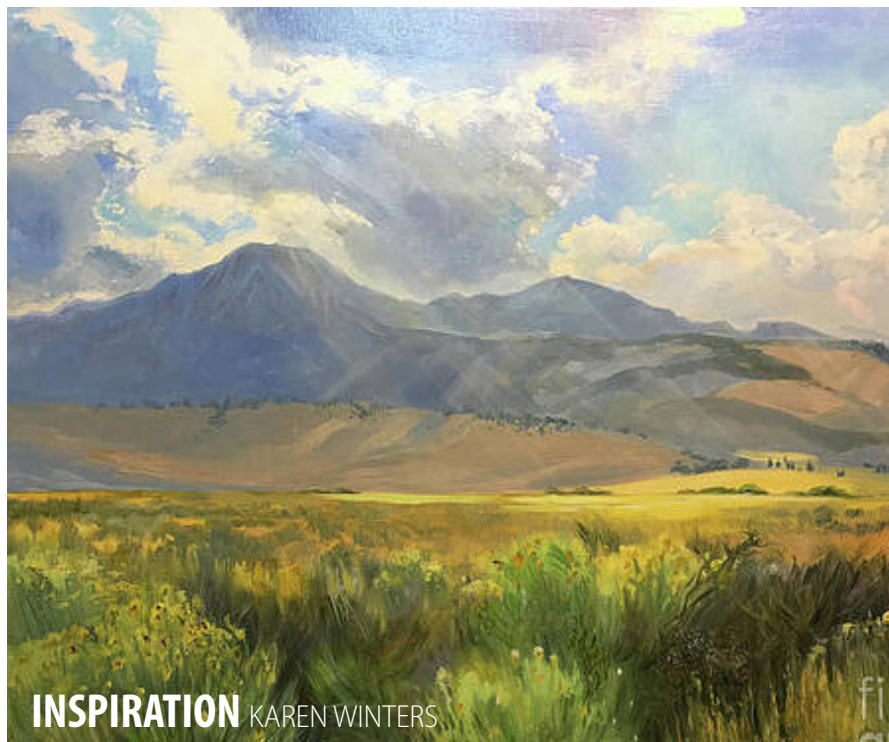


FEELING OF SAFETY

- CREATE A CALMING AND UNIFIED CENTRAL SPACE
- PROVIDING SENSORY EXPERIENCE
- INSPIRED BY CALIFORNIA'S GREAT BASIN

● HILLTOP

● SAGEBRUSH SENSORY BASIN



CONCEPTUAL PLAN

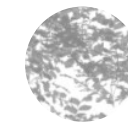


HATCHES: SECONDARY BUBBLES

REPRESENT HEIGHTS OF THE PLANTS WITHIN EACH OF THE PRIMARY BUBBLES. THIS DESIGN ADDRESSES HEIGHT OF PLANTS TO HELP DEEPEN FEELINGS OF SAFETY AND CALM. THE USE OF APPROPRIATE VEGETATION AND HEIGHTS CAN INCREASE SAFETY IN TERMS OF FIRE SAFETY AS WELL. THE HEIGHTS WERE CALCULATED ACCORDING TO MY INTERPRETATION OF FIRE SAFETY ZONES*



FIRE RESISTANT WALKABLE GROUND COVER



FIRE RESISTANT GROUND COVER AND SHRUBS:

- ZONE 1: 5-30 FEET FROM BUILDING
- GROUND COVER UNDER 12 INCHES
- SHRUB HEIGHT < 3 FEET OR < 1/3 TREE CANOPY BASE



FIRE RESISTANT PLANTS

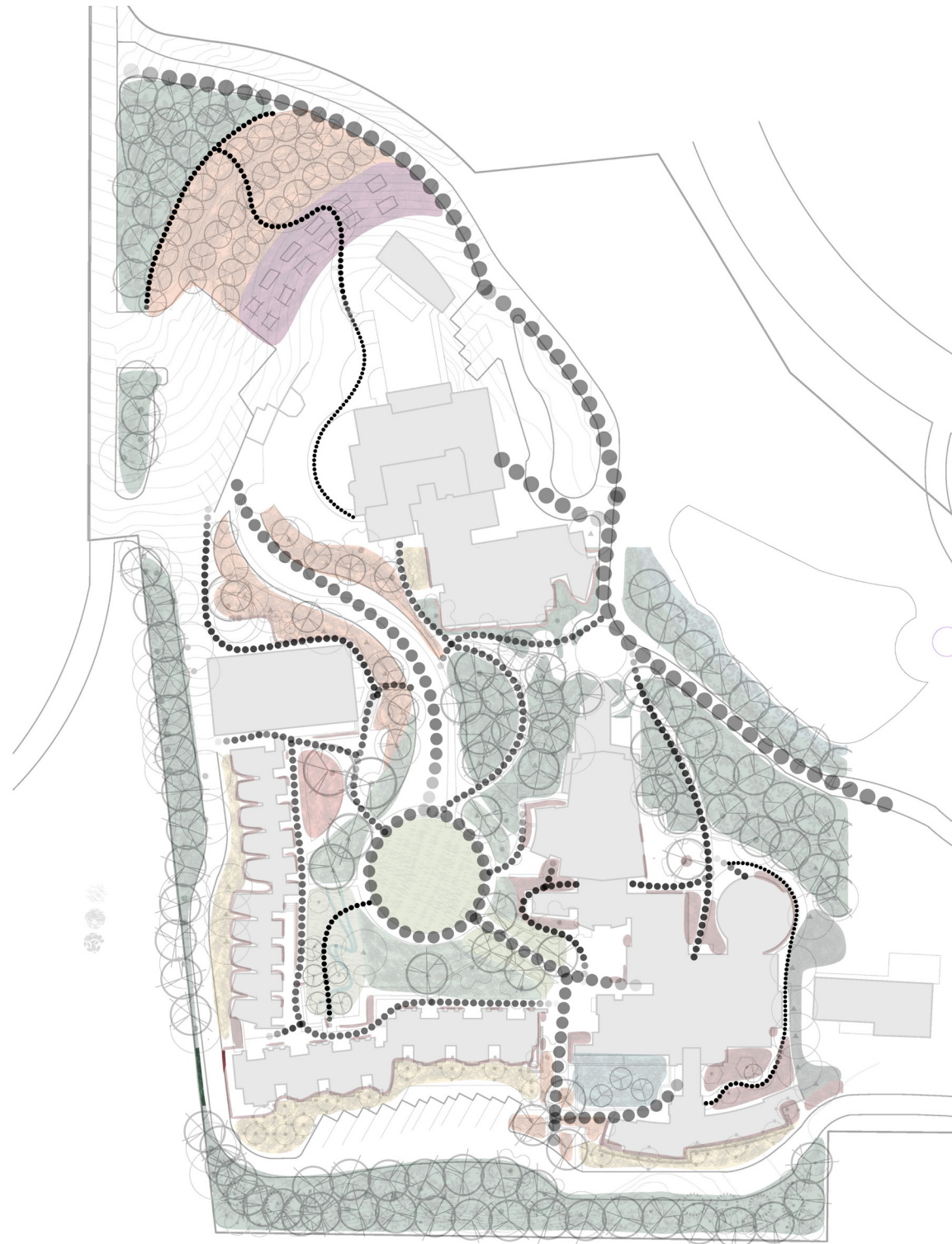
- ZONE 2: 30-50 FEET FROM BUILDING
- < 3 FEET OR < 1/3 HEIGHT OF TREE CANOPY BASE



FIRE RESISTANT TREES WITH CANOPY AT LEAST 10 FEET FROM BUILDINGS

*MY INTERPRETATION ON LOCAL FIRESCAPING IS AN INTERPRETATION ONLY AND IS NOT THE LOCAL ORDINANCE FOR HIGH FIRE HAZARD LANDSCAPE REQUIREMENTS

CONCEPTUAL PLAN



DOTTED LINE: PEDESTRIAN CIRCULATION

REPRESENTS THE **JOURNEY** VISITORS TAKE THROUGH THE DESIGNED SPACE AS PEDESTRIANS

● ● ● ● PRIMARY

● ● ● ● ● ● SECONDARY

THANK YOU!

A HEALING JOURNEY THROUGH NATURE

VICTORIA STOVER

LANDSCAPE DESIGN 5 - ARCH X 472.5

INSTRUCTOR: PAMELA BRIEF

5/14/25

