

MURPHY SCULPTURE GARDEN REDEVELOPMENT
Landscape Design 2 - Jim Smith
Spring 2025
by TATO MAIZZA

SCULPTURE CHOICES

Overall selection was based on historical importance (different Art Periods), gender and author's engagement with issues that are important today. Also based on aesthetic contrast/similarity with other chosen sculptures.

In general, the old garden didn't reflect the current state of art and society, one of the reasons the new garden will be called "Shattered Mirror". So new additions are intended to help add more contemporary art and more gender equality to the space.

NEW ADDITIONS

CONTEMPORARY



Yayoi Kusama, Pumpkin (Bronze), 2018

1

- Female sculptor
- Highly influential today
- Neurodivergent
- Symbol of resilience and empowerment due to her openness about her mental illness
- Very popular
- Will attract visitors

CONTEMPORARY

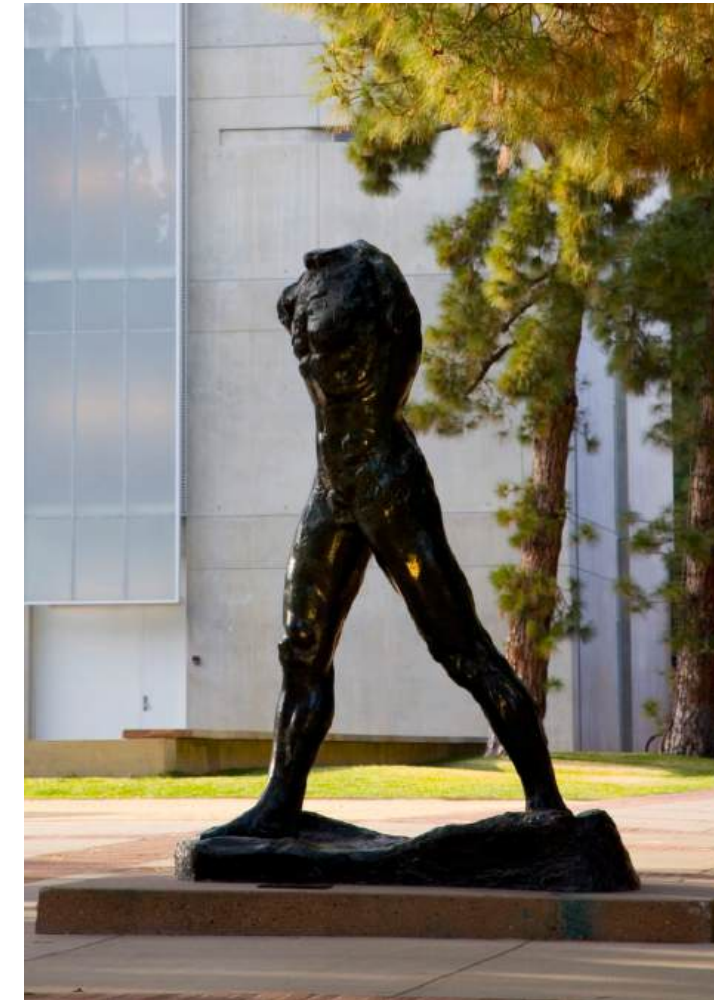


Otobong Nkanga, Solid Maneuvers, 2015

2

- Female Sculptor
- Often critiques the extraction of natural resources, the displacement of people, and the consequences of climate change, highlighting the interconnectedness of these issues and engaging with post colonial narratives.

IMPRESSIONIST/ PRE MODERNIST



August Rodin, The Walking Man, 1908

3

- Iconic
- Precursor to Modernism
- Highly influential

MODERNIST



Alexander Calder, Button Flower, 1959

5

- Dynamism of curves
- New materials (metal sheets)
- Nature theme
- Architectural elements

MODERNIST

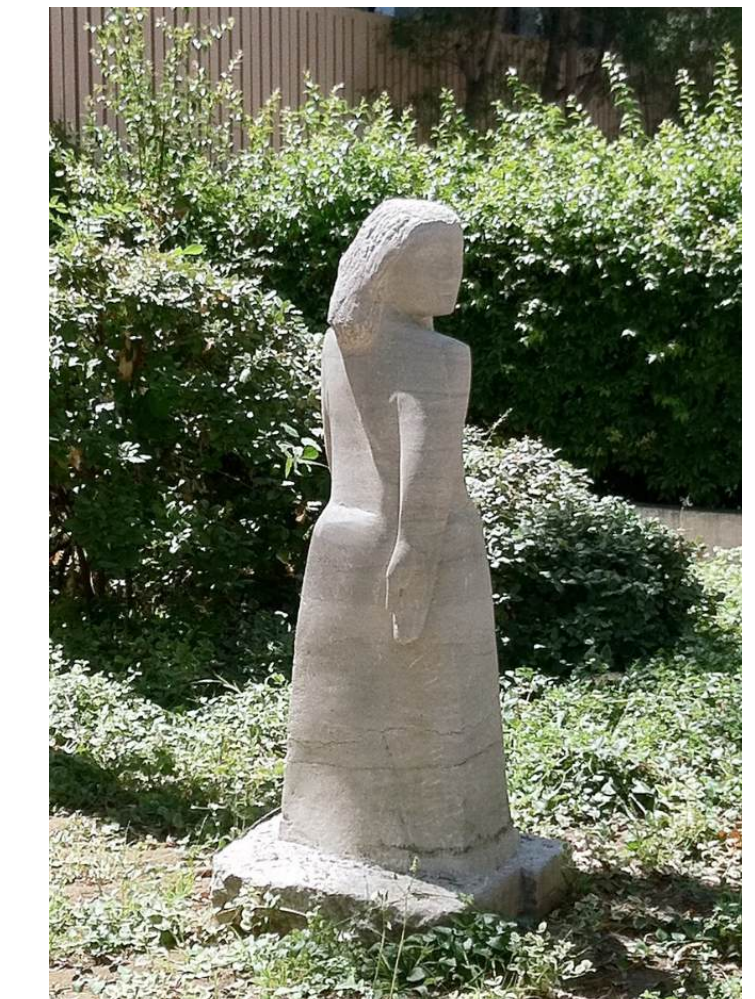


Pietro Consagra, Difficult Dialogue, 1959

6

- Founder of Forma I, an Italian Modernist school.
- Structured abstraction
- Recognized for his double-sided low reliefs, and large-scale commissions, particularly in urban spaces

MODERNIST



Anna Mahler, Night, 1963

7

- Female sculptor
- Author of Tower of Masks, exhibited close by
- Contrast in material
- Painting training
- Expressed herself better with no color, just form

FROM CURRENT COLLECTION

DADA/ SURREALIST



Jean Arp, Hybrid Fruit Called Pagoda, 1934

4

- Collection needs to present different sculpture art periods
- Smoothness of curves, similarities to natural forms

POST MODERN



Vladas Vildziunas, The Bird Goddess, 1977

8

- Lithuanian
- Worked as local artist in California
- Defended Lithuania independence
- Political

POST MODERN



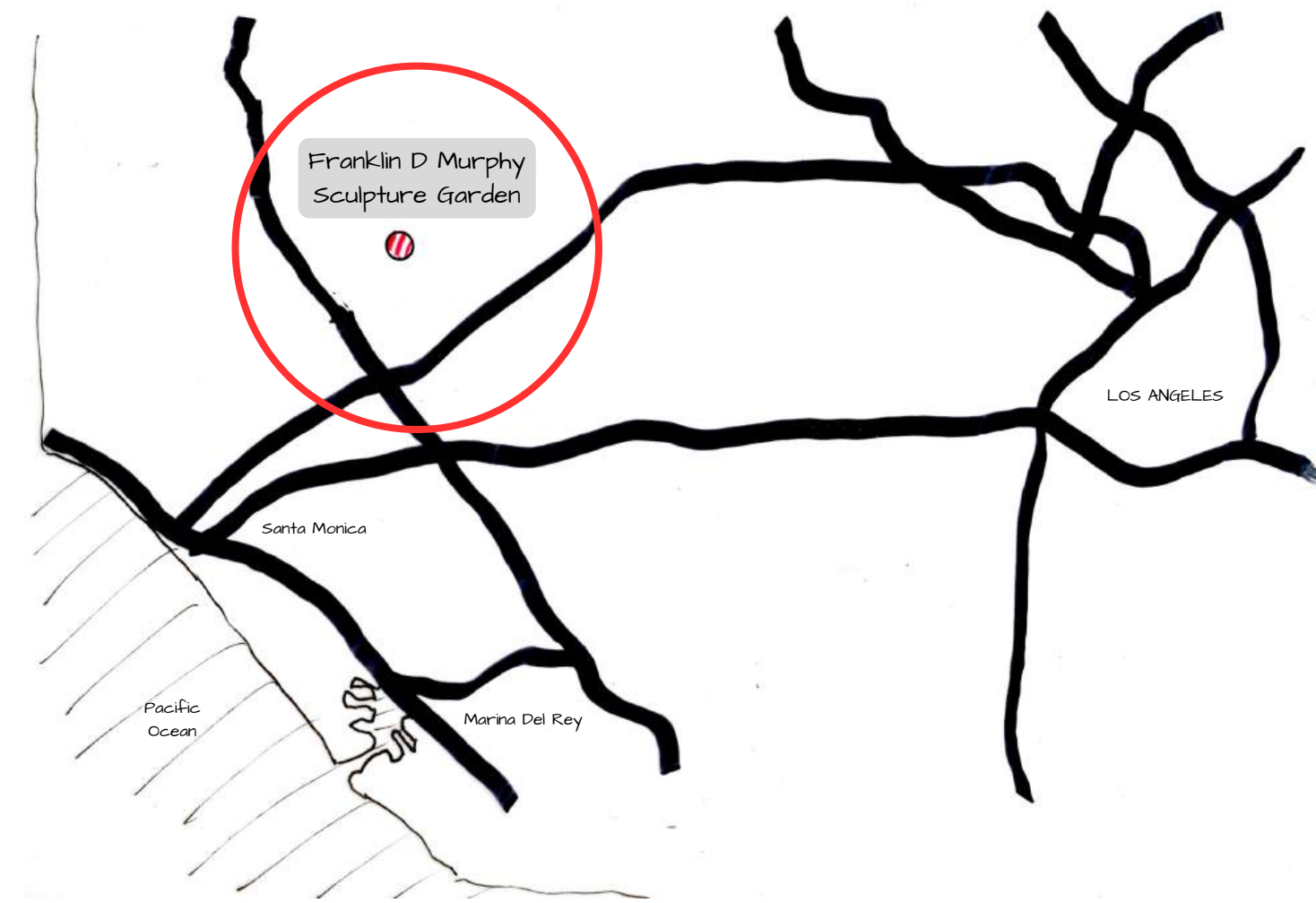
Deborah Butterfield, Pensive, 1997

9

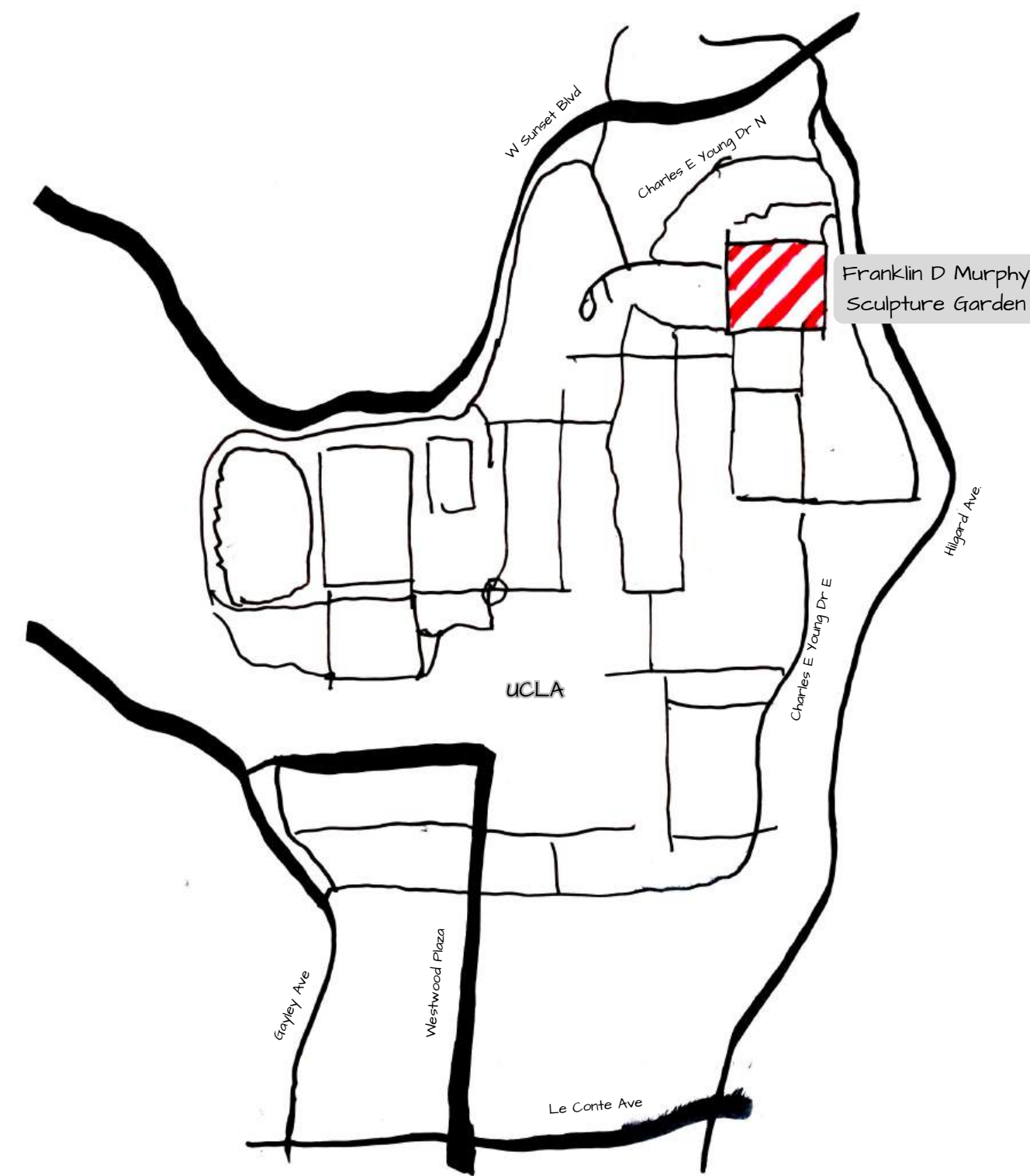
- Female Sculptor
- Equine sculptures
- Emotional Nature portray
- Environmentally aware
- Recycled materials

VICINITY MAPS AND SITE ANALYSIS

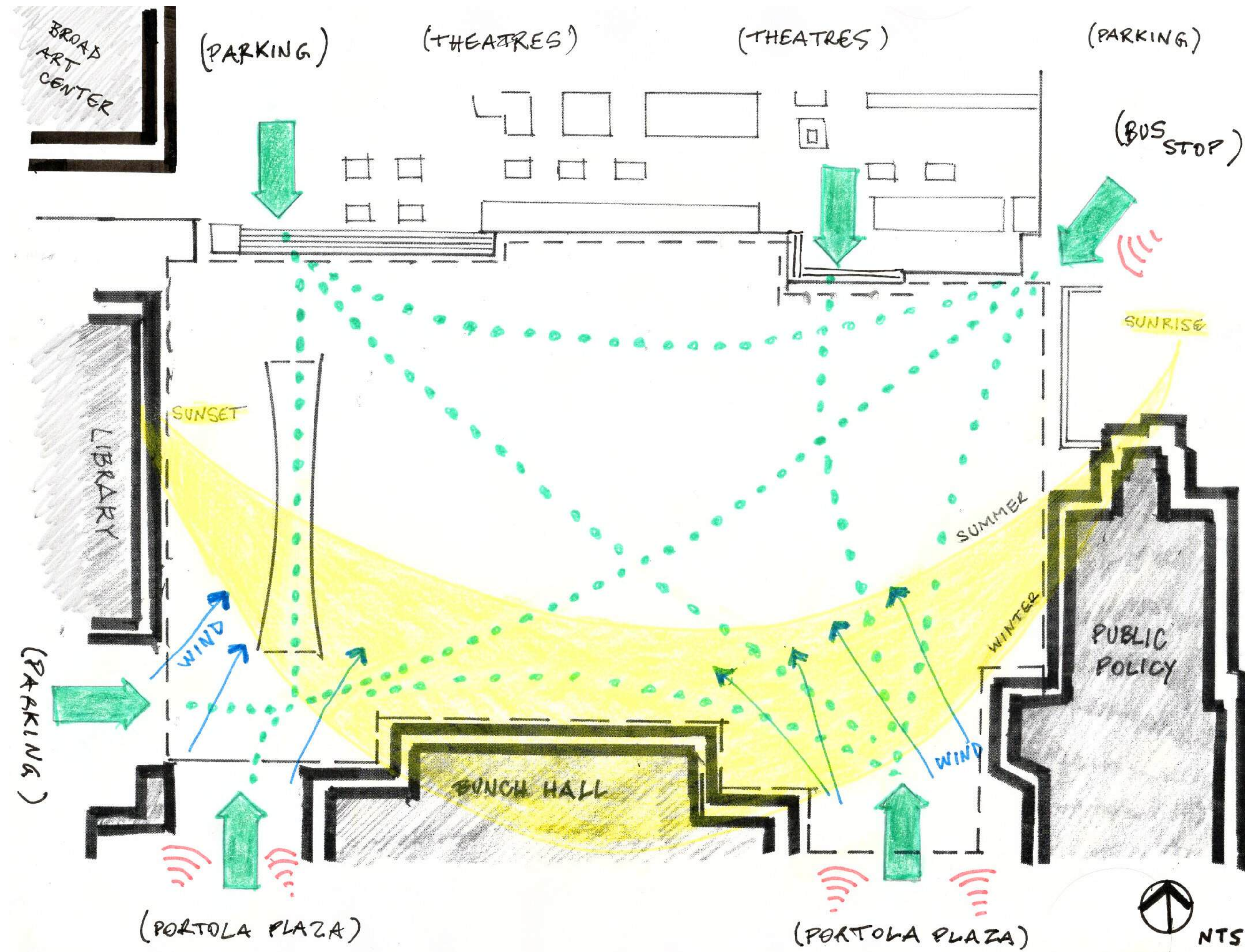
Regional Map



Local Map

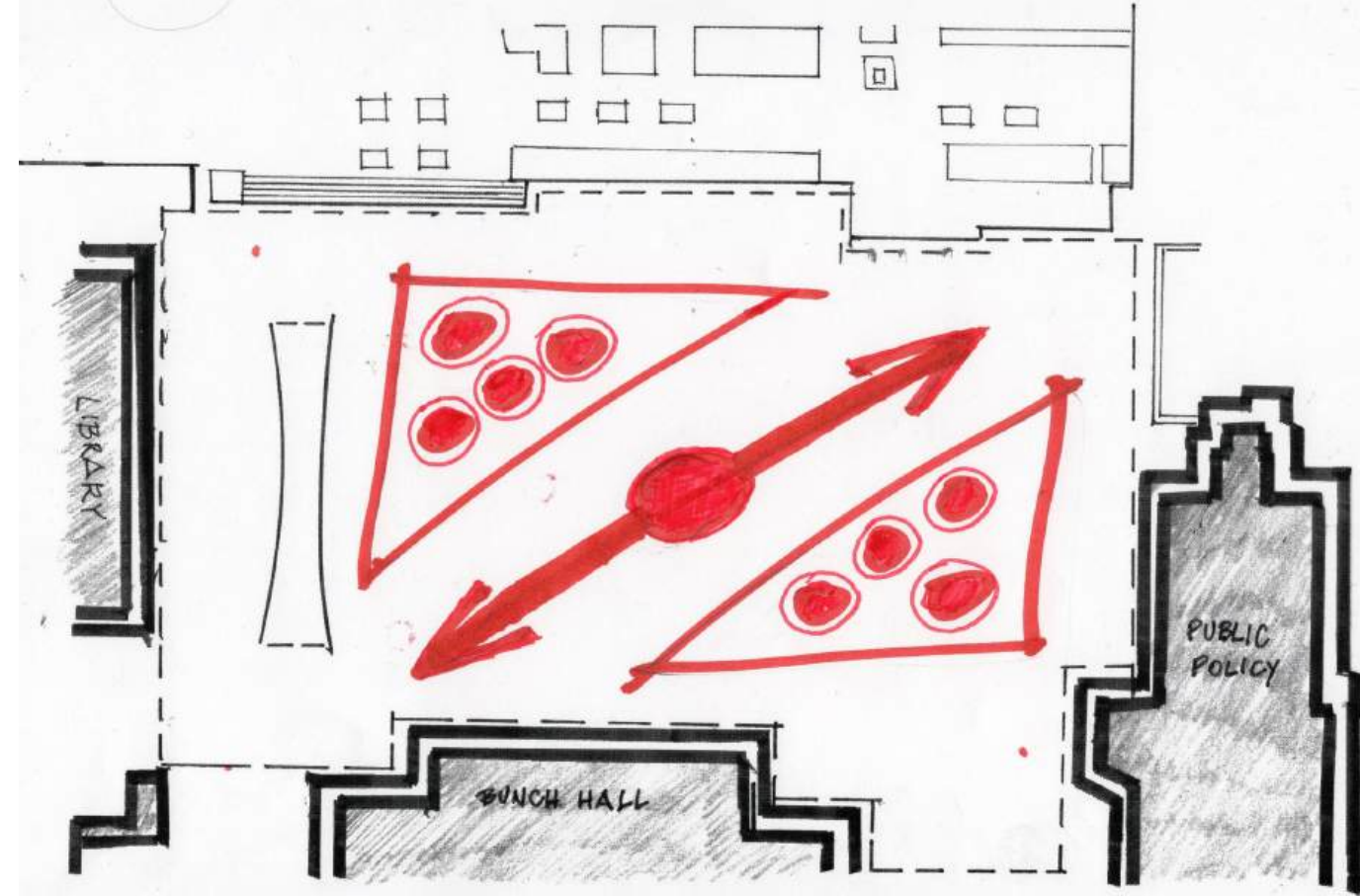


SITE ANALYSIS

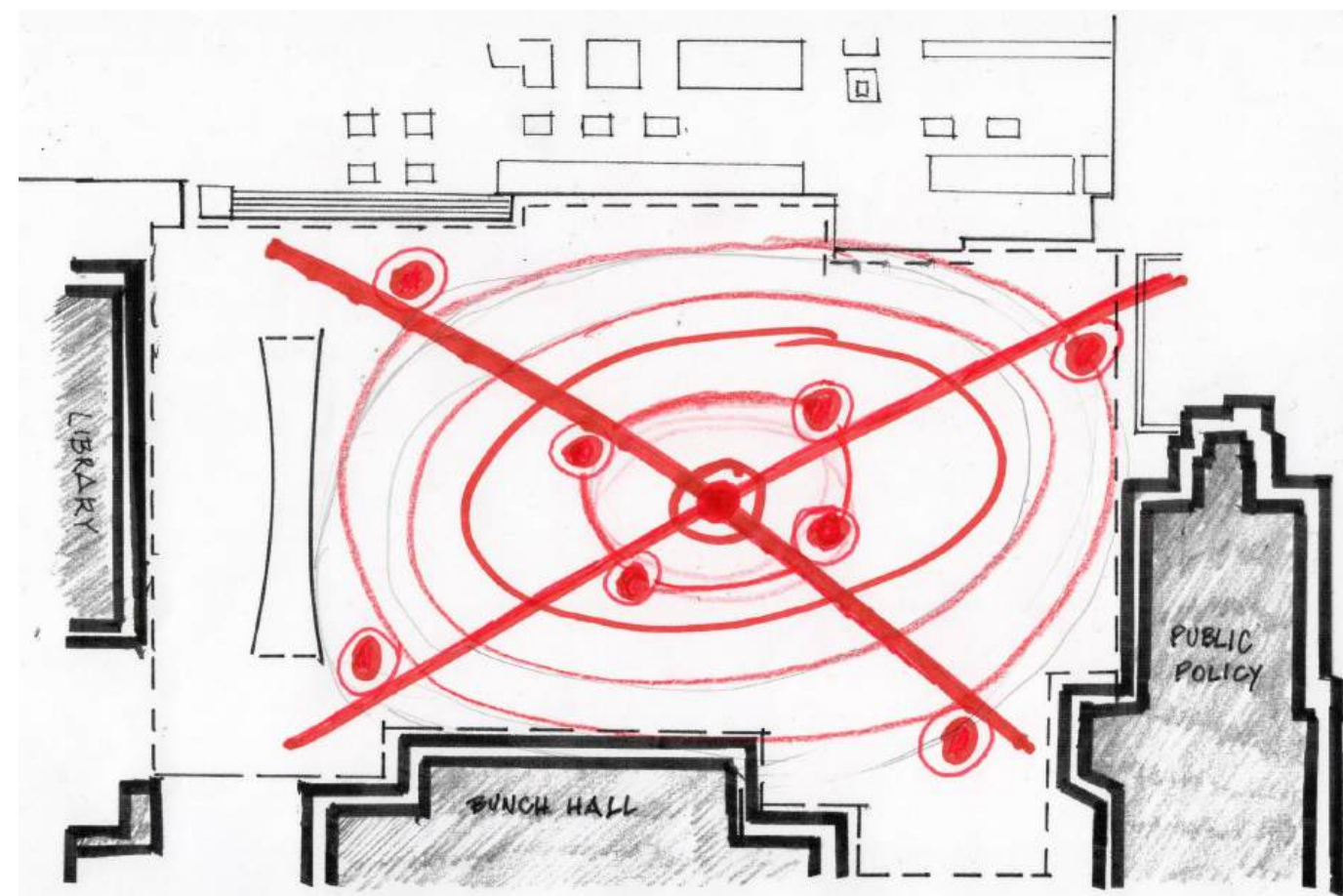


CONCEPT DIAGRAMS - OPTIONS AND DEVELOPMENT

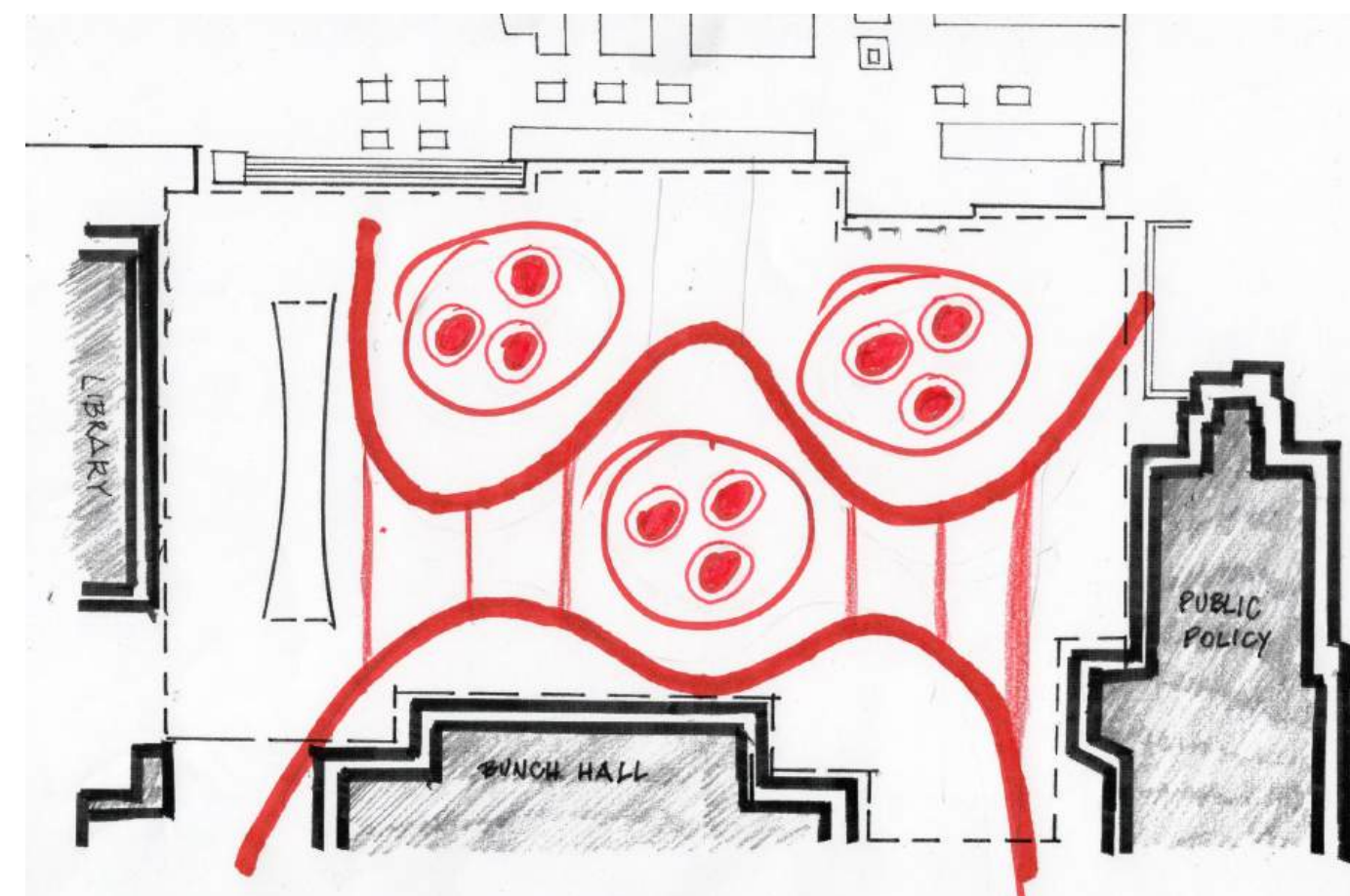
CONCEPT 1



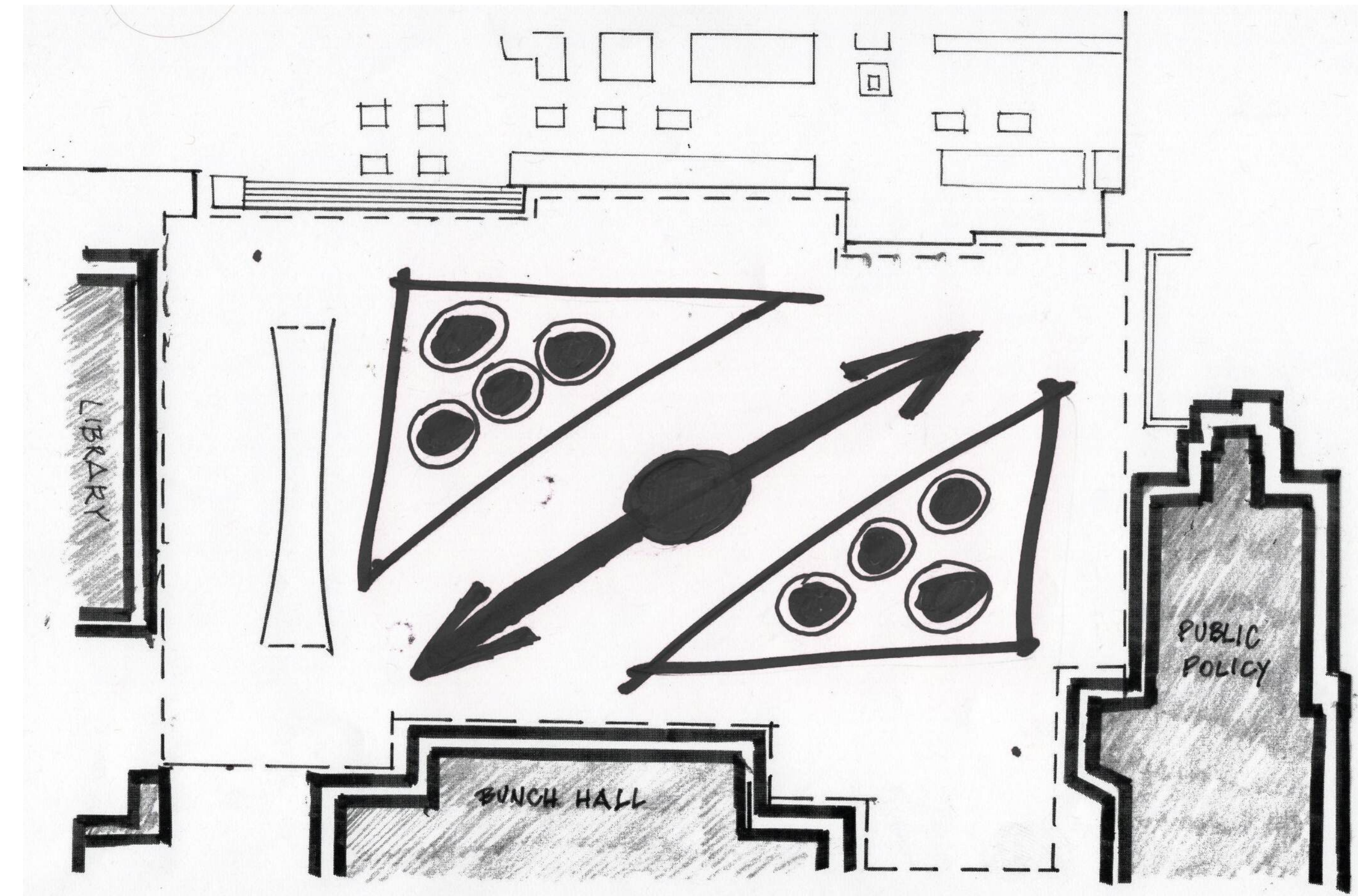
CONCEPT 2



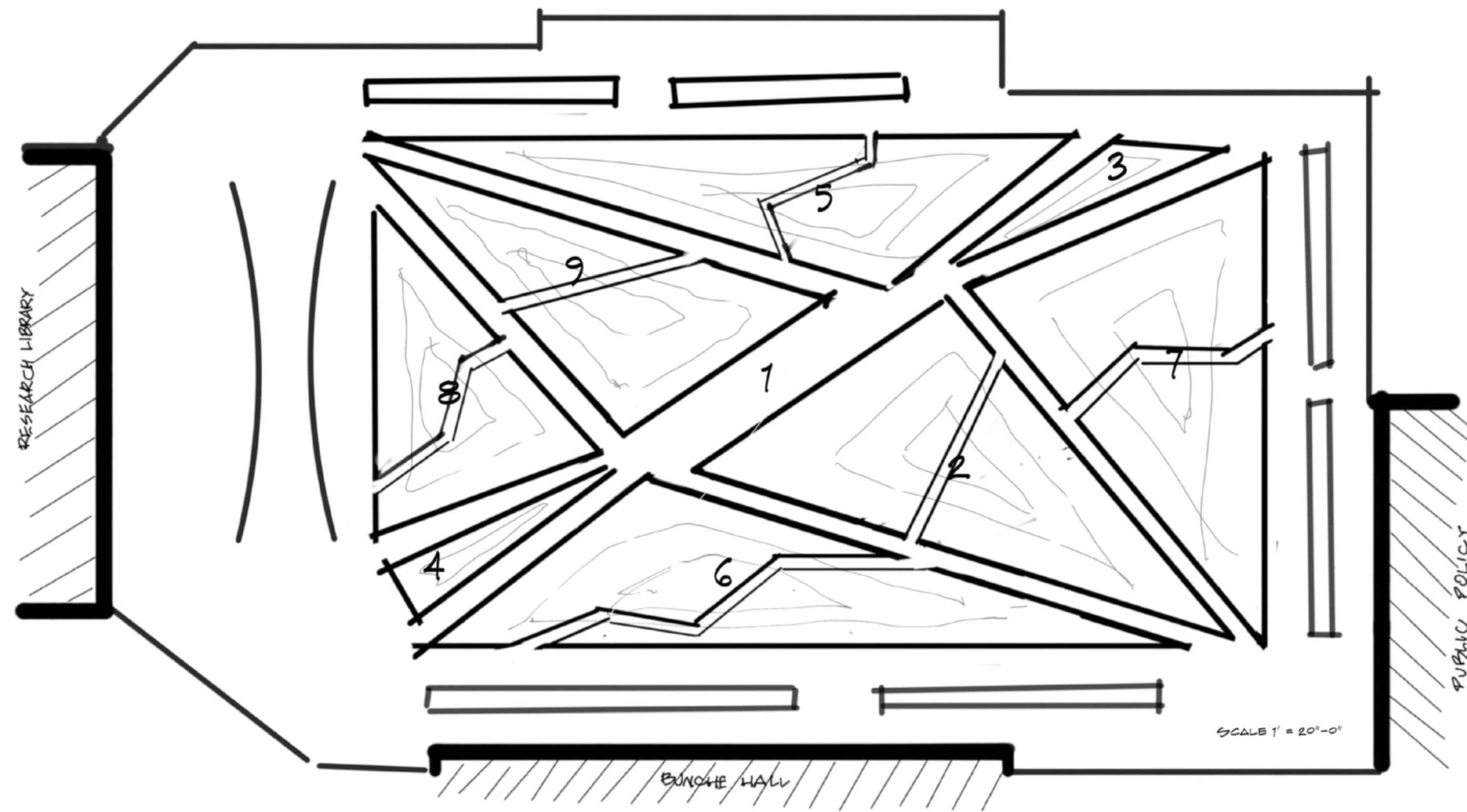
CONCEPT 3



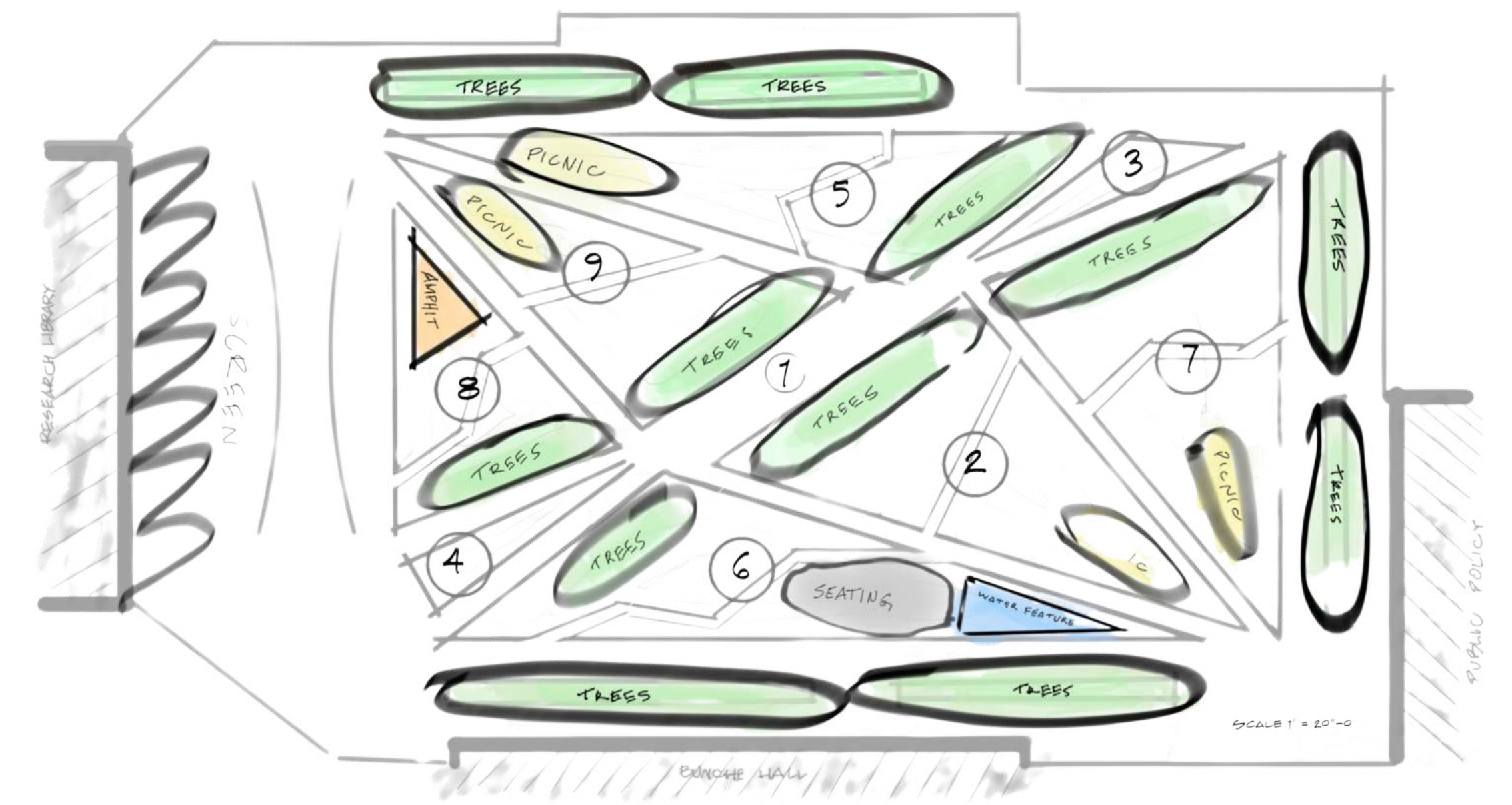
DEVELOPMENT



"THE SHATTERED MIRROR"



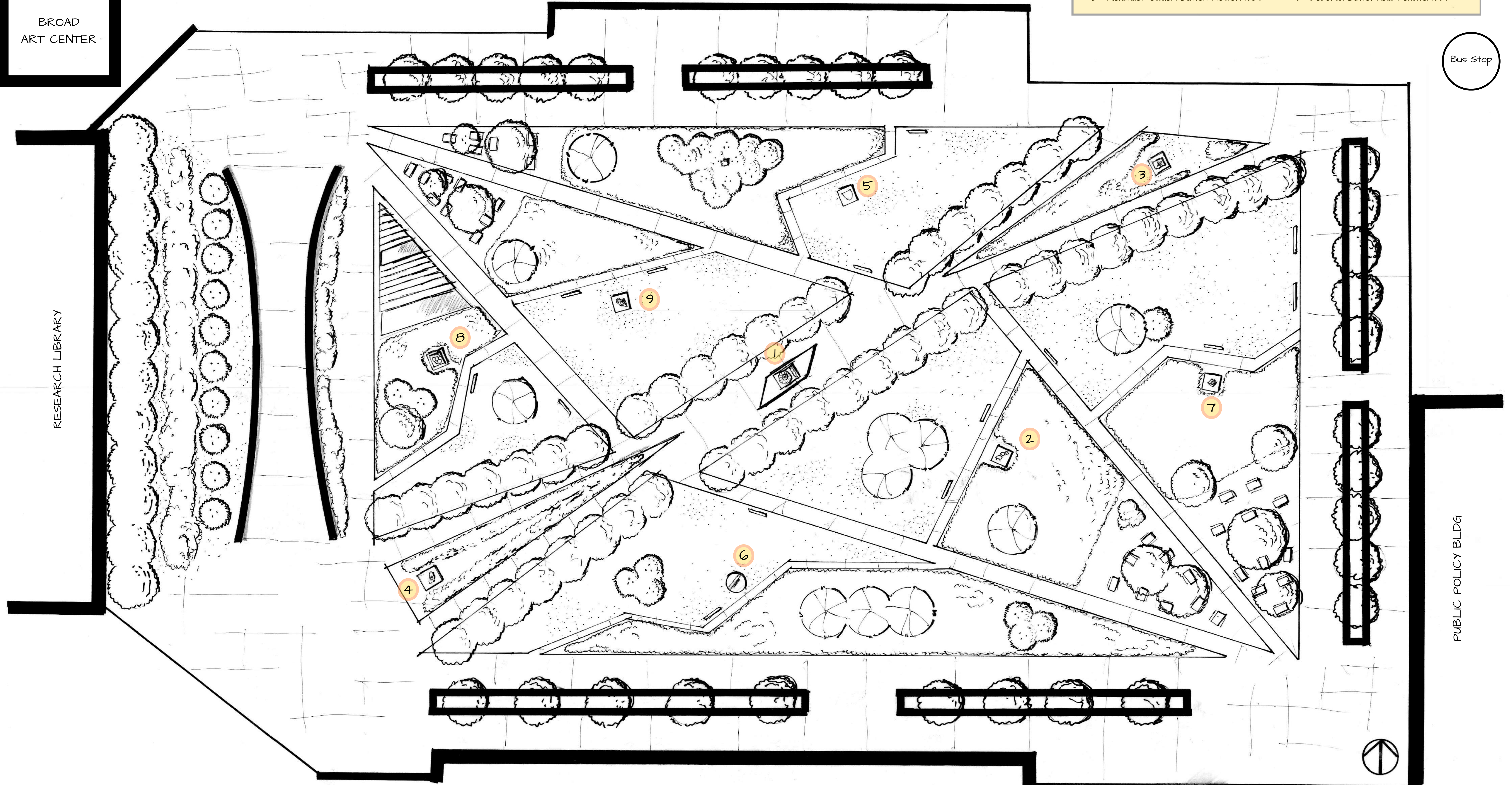
Bubble Diagram



LAYOUT PLAN

BROAD
ART CENTER

RESEARCH LIBRARY



LEGEND - SCULPTURES

- | | |
|--|---|
| 1 - Yayoi Kusama, Pumpkin (Bronze), 2018 | 6 - Pietro Consagra, Difficult Dialogue, 1959 |
| 2 - Otobong Nkanga, Solid Maneuvers, 2015 | 7 - Anna Mahler, Night, 1963 |
| 3 - August Rodin, The Walking Man, 1908 | 8 - Vladas Vildziunas, The Bird Goddess, 1977 |
| 4 - Jean Arp, Hybrid Fruit Called Pagoda, 1934 | 9 - Deborah Butterfield, Pensive, 1997 |
| 5 - Alexander Calder, Button Flower, 1959 | |

Bus Stop

PUBLIC POLICY BLDG

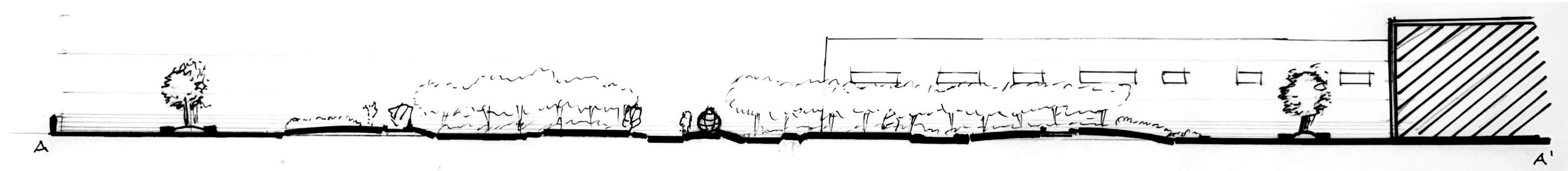
BUNCHE HALL



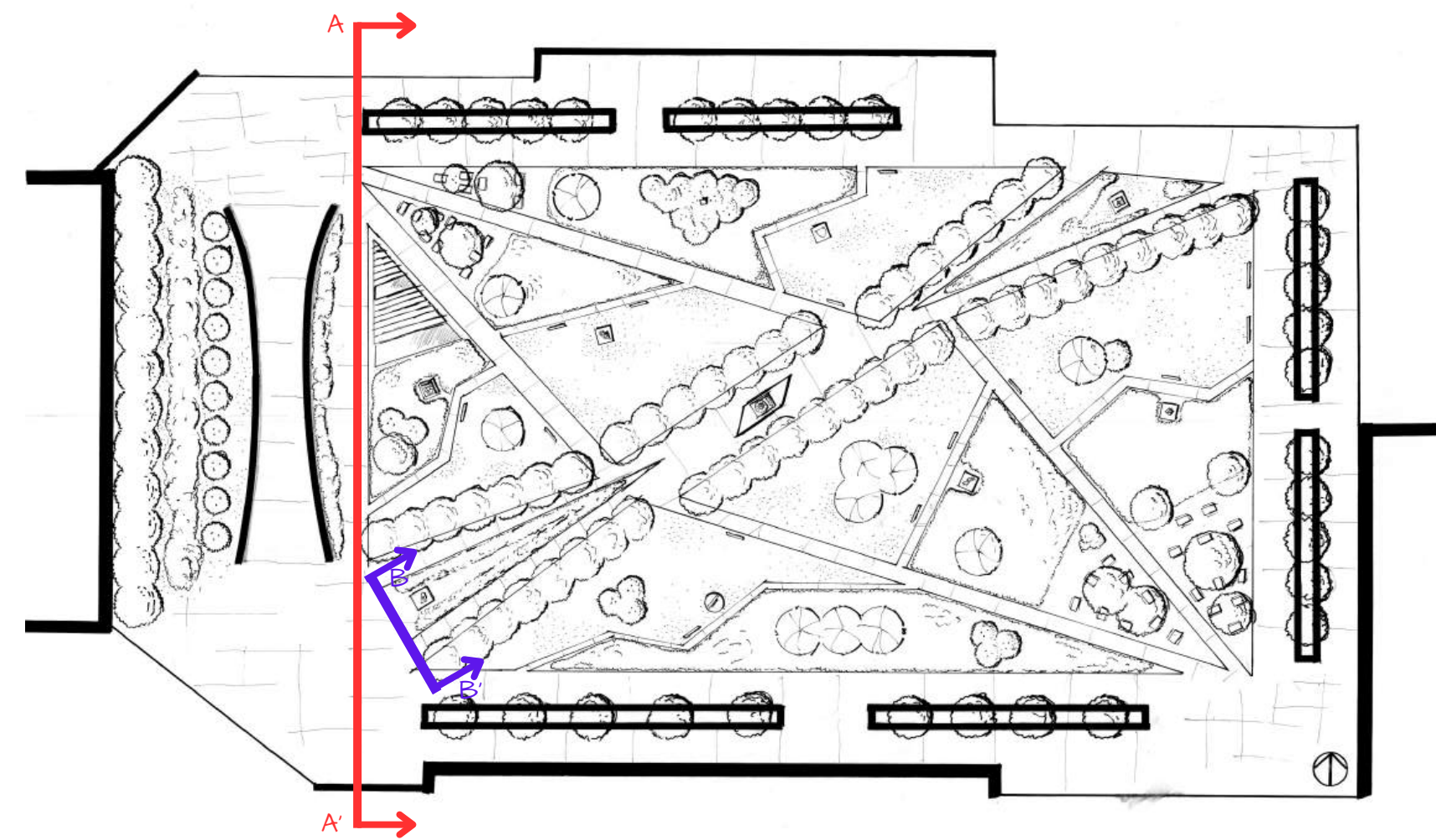
SCALE 1" = 20' - 0"

SECTION ELEVATIONS

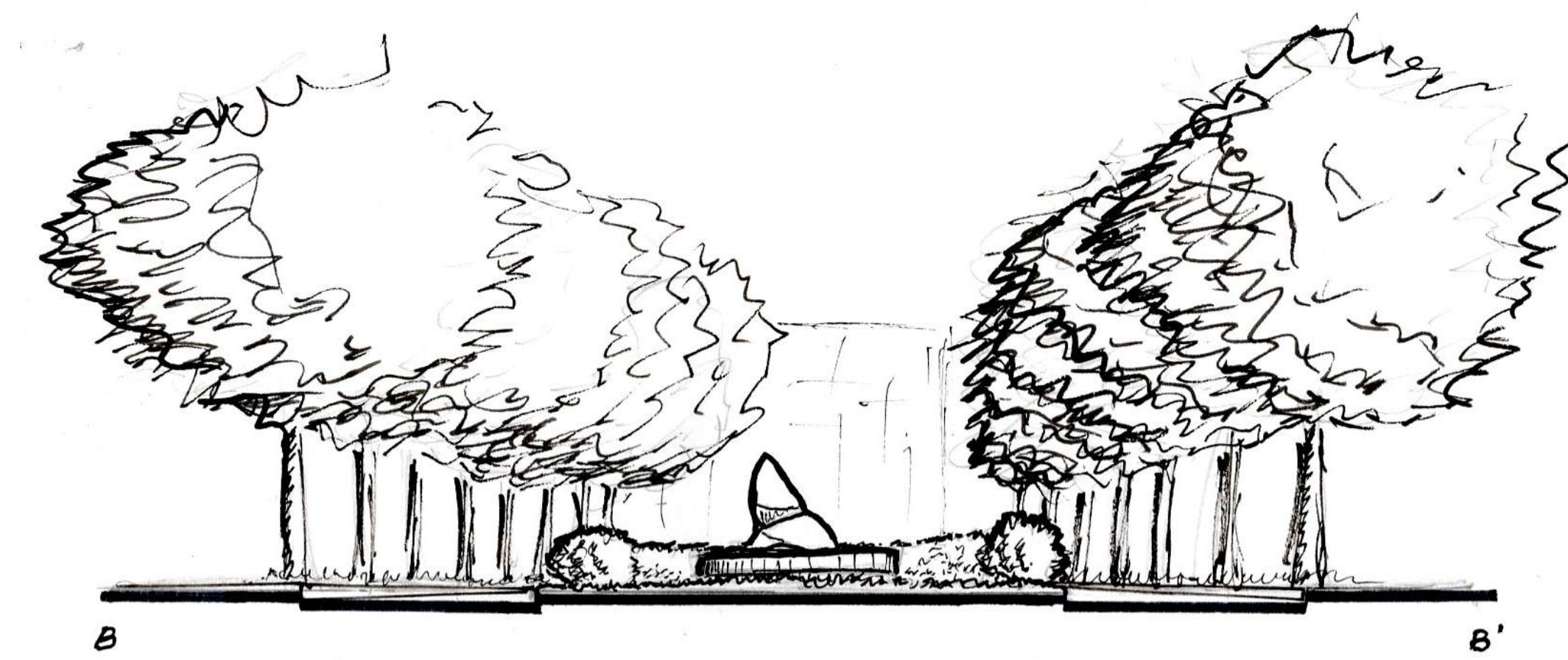
ELEVATION 1



KEY

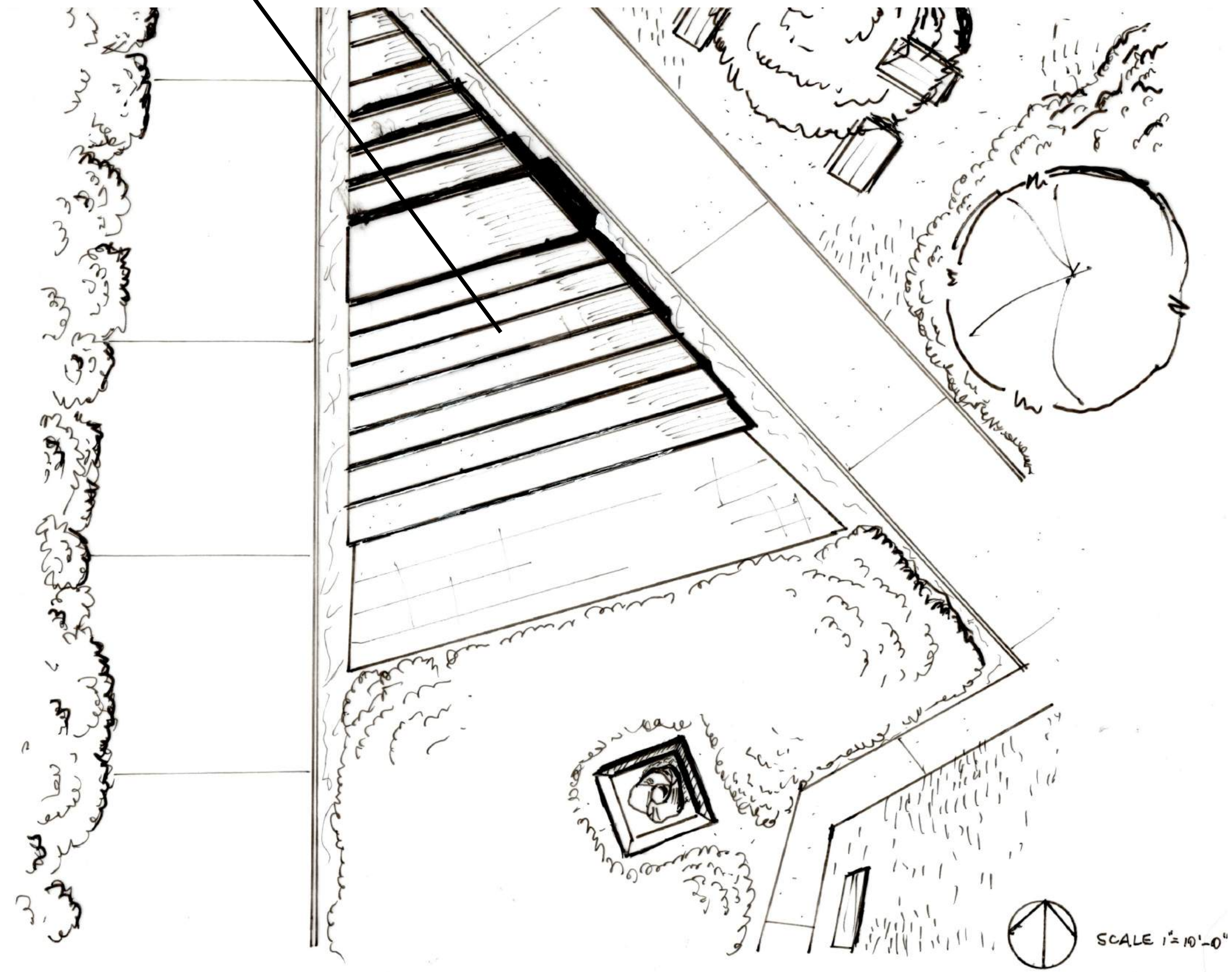


ELEVATION 2



SCULPTURE SPACE PLANS

AMPHITHEATRE

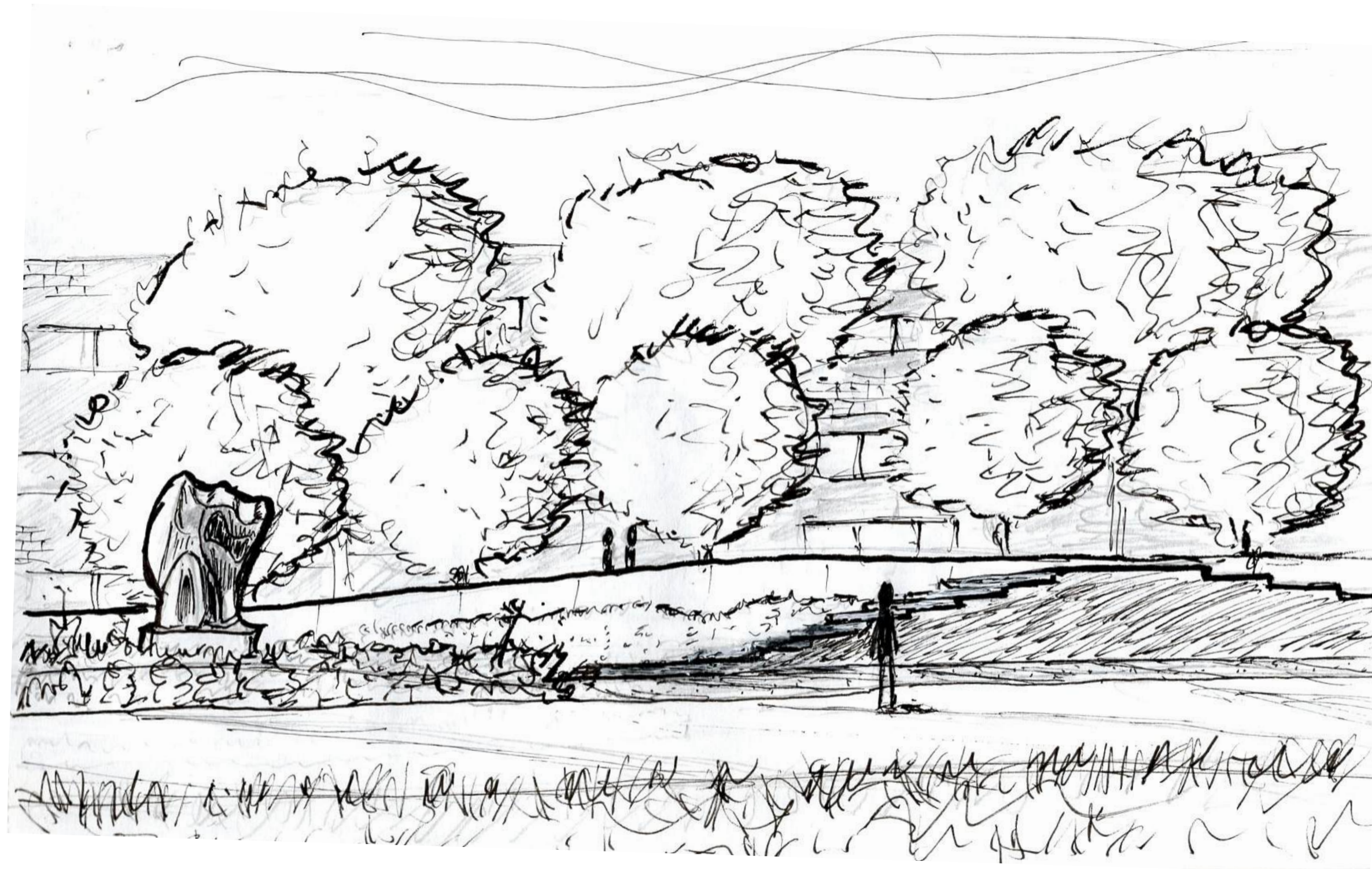


Vladas Vildziunas, *The Bird Goddess*, 1977



Yayoi Kusama, *Pumpkin (Bronze)*, 2018

3D THUMBNAIL SKETCHES



Vladas Vildziunas, *The Bird Goddess*, 1977



Yayoi Kusama, *Pumpkin (Bronze)*, 2018



Alexander Calder, *Button Flower*, 1959