

ELEMENTARY ACADEMY PROPOSAL

INTRODUCTION TO THE LANDSCAPE PROFESSIONS - FALL 2024

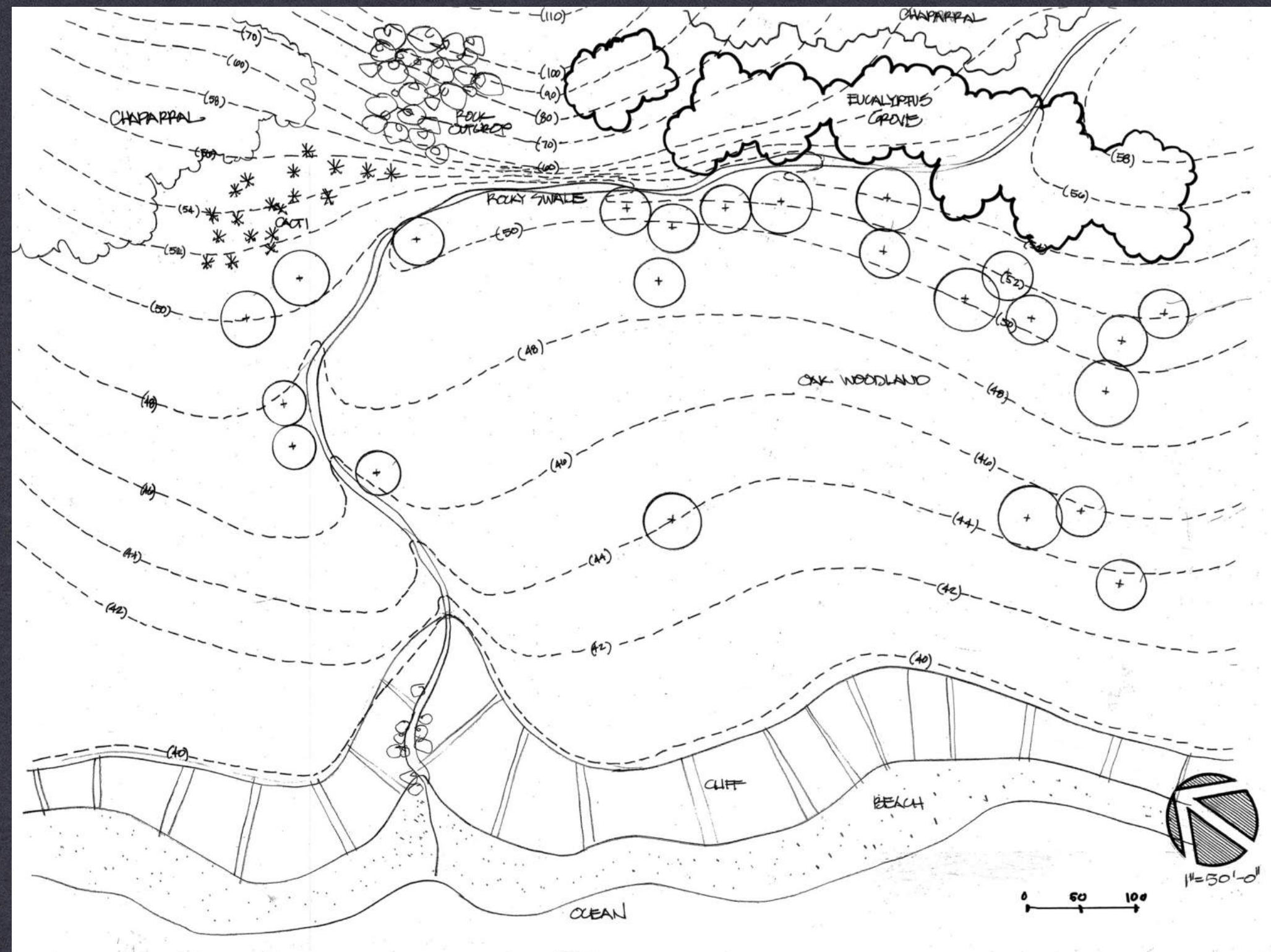
BY TATO MAIZZA

NOTABLE SCHOOL BELIEFS



- * Experimental learning, students grow outside the classroom
- * Honor the land, be a keeper of the planet, use the planet wisely
- * Spark imagination in children

NOTABLE SITE CHARACTERISTICS



- * Coastal terrain in Central California
- * Populated by mature oak trees, to remain untouched
- * Long swale leading to a cliff
- * Sparsely populated area

MAIN DESIGN CONCEPTS



1. THE MOTHER OAK CONCEPT

Longevity, strength, stability,
endurance, fertility, power,
justice, and honesty:

A central core for the learning
journey

2. THE SENSE OF WONDER CONCEPT



RUSSEL RUIZ, SANTA BARBARA ANTHROPOLOGY MUSEUM

Influenced by native peoples concepts and the Esalen Institute

Learning from and in nature: find small sacred retreats everywhere

3. THE UNIVERSAL CONNECTION CONCEPT

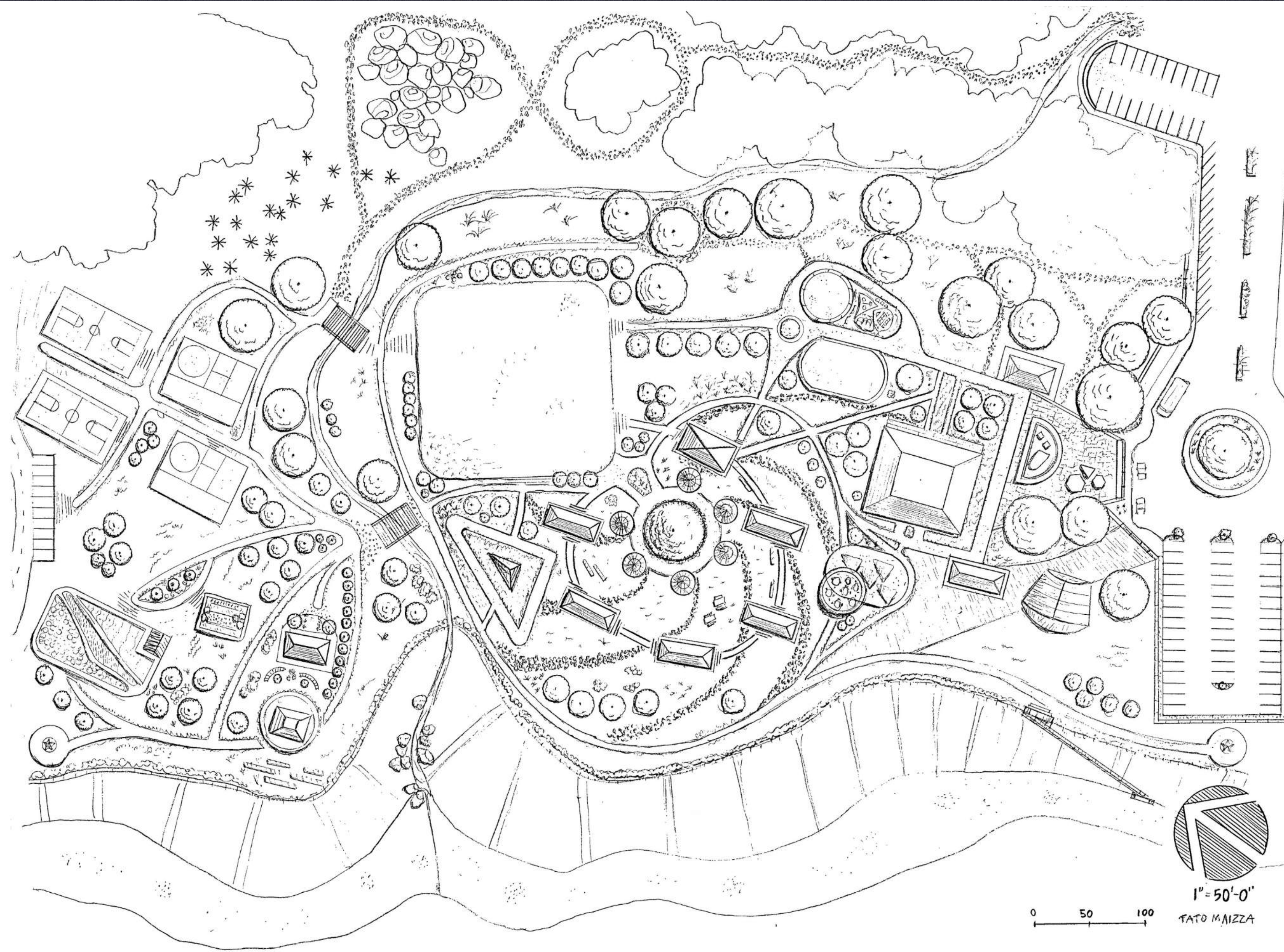
The learning process can be seen as a
creative Nebula, where concepts twirl
and are transformed:

Connection Young Mind - Universe

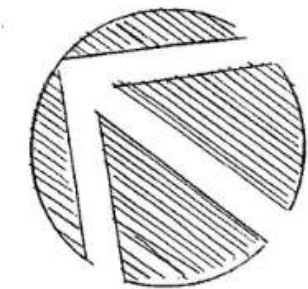
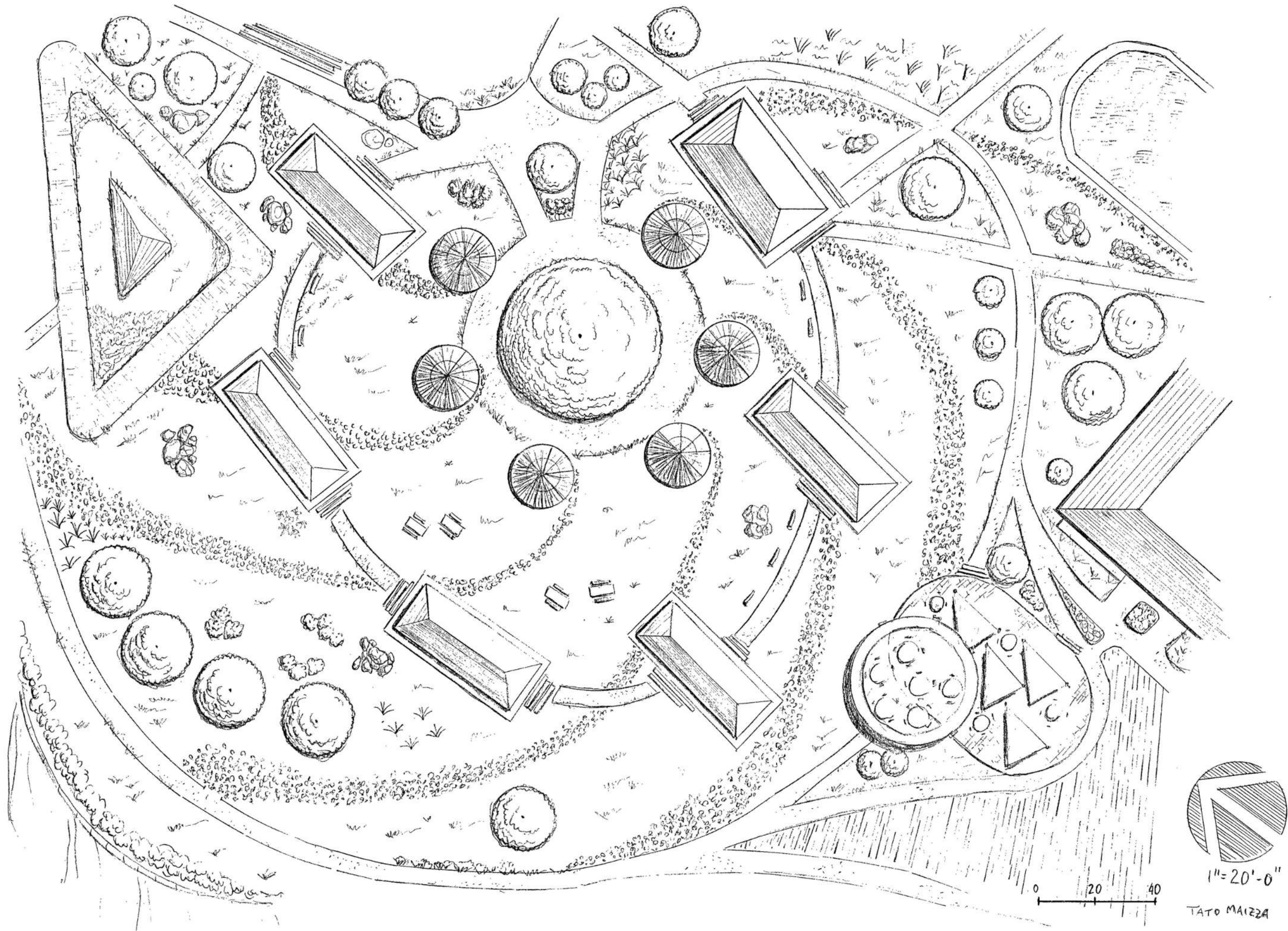


PHOTO: MICHAEL LOUIS O'MARA

DESIGN PROPOSAL



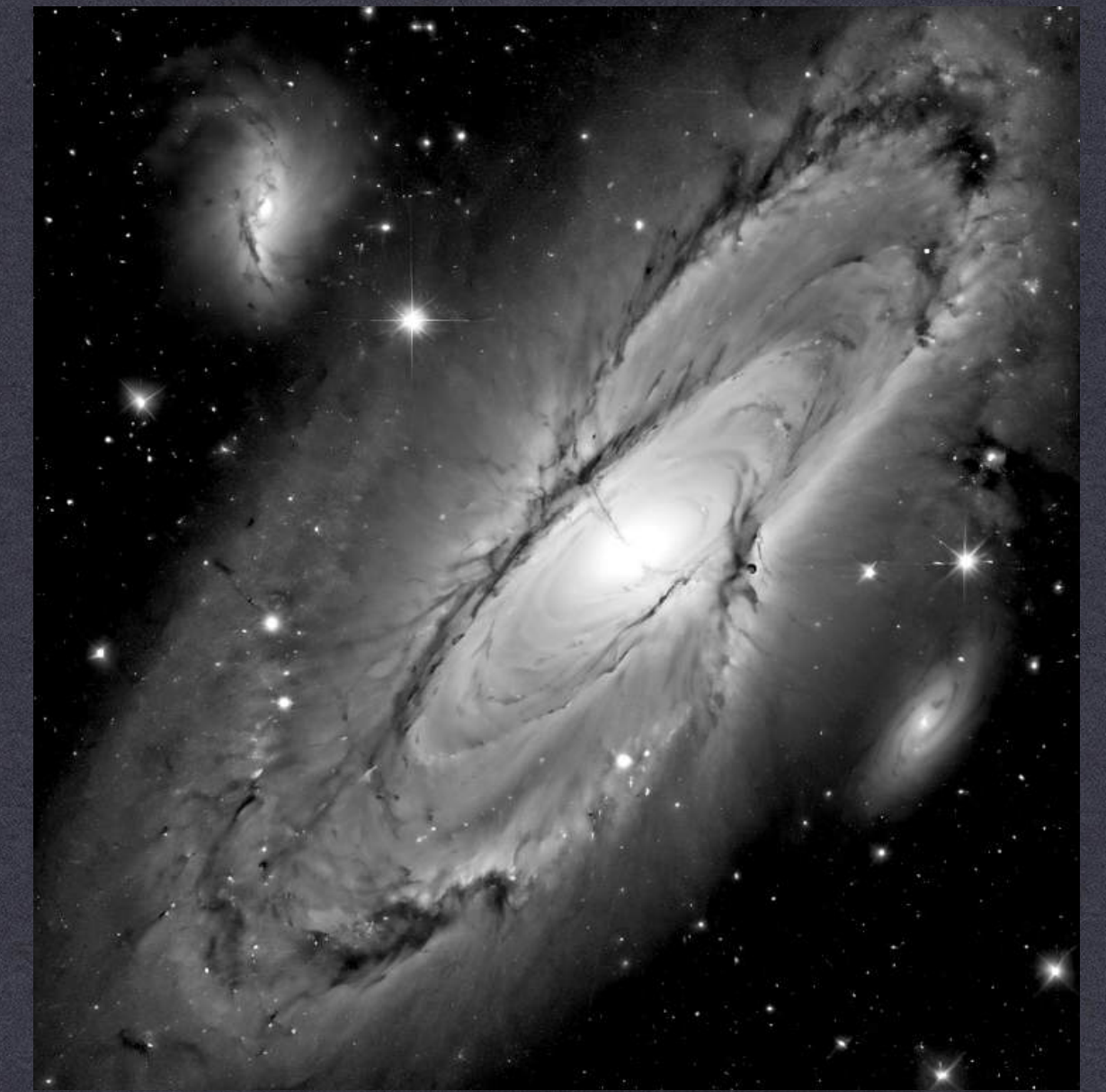
SITE PLAN



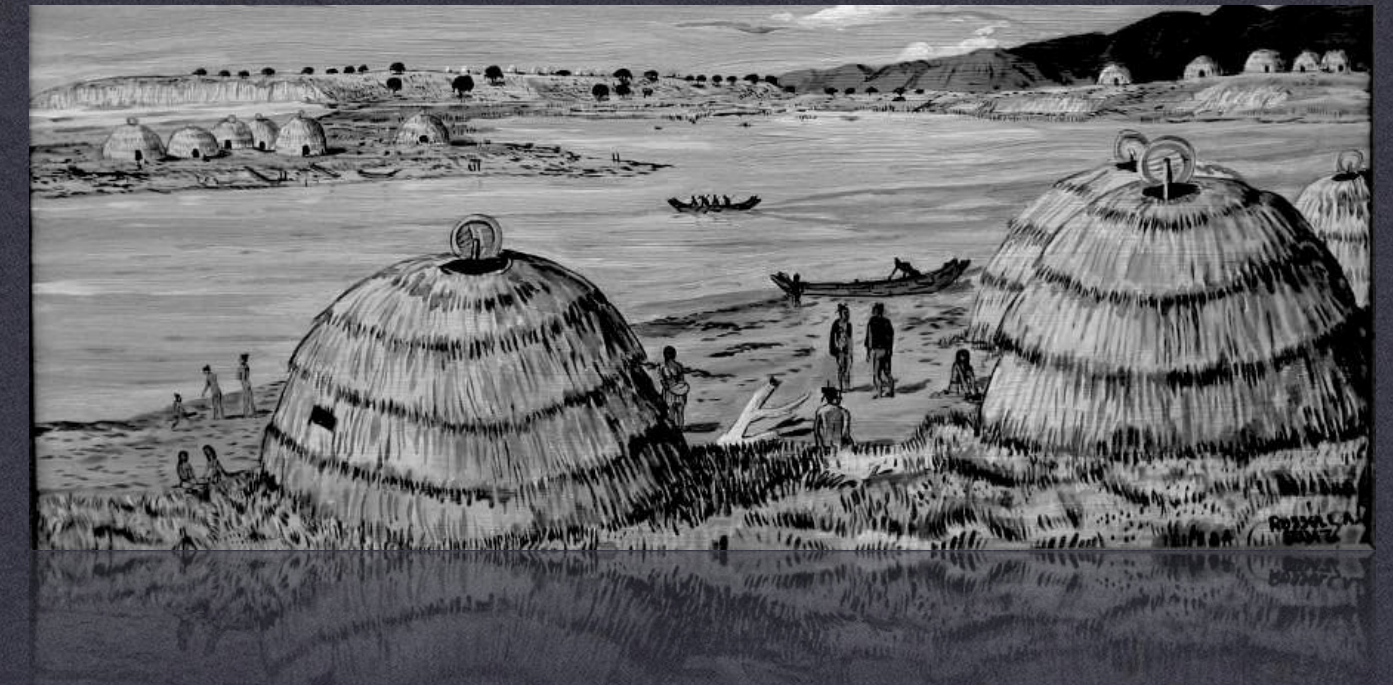
1" = 20'-0"

TATO MAIZZA

ENLARGEMENT



THE NEBULA
CONNECTION MIND-UNIVERSE



CHUMASH-INSPIRED RITUAL HUTS

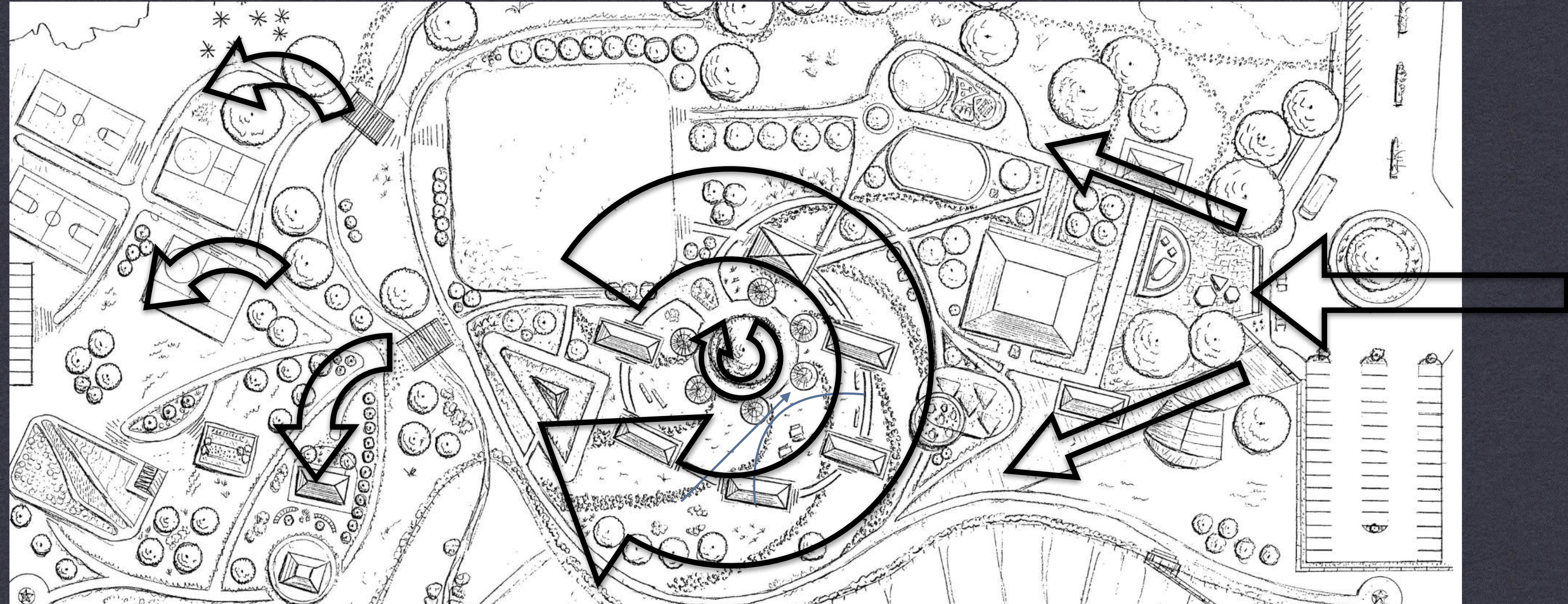
LEARNING OUTSIDE - HONORING AND LOVING THE LAND AND ITS PEOPLES



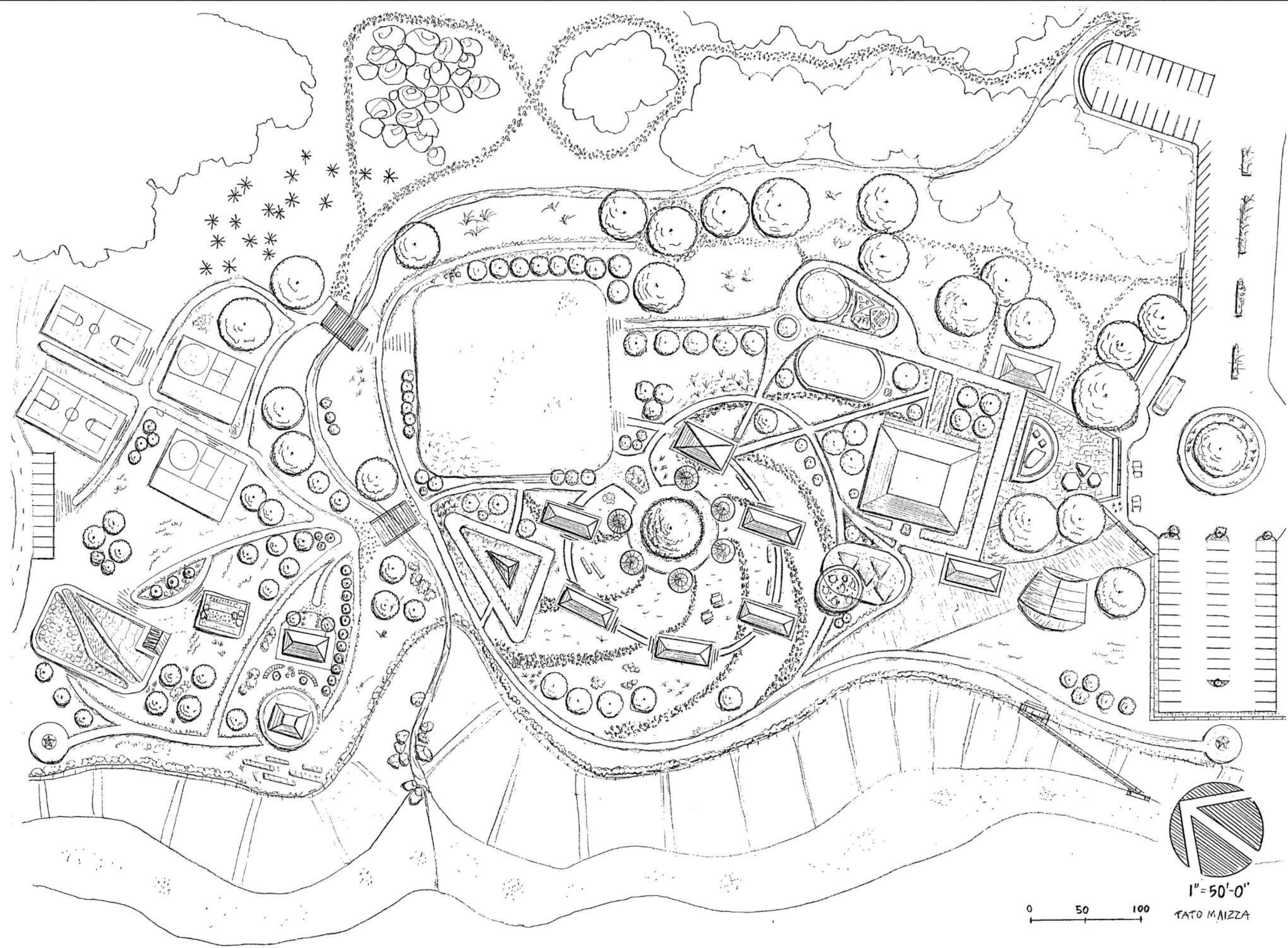
SACRED/SPECIAL SPACES

SPARKING THE IMAGINATION AND FOSTERING TRANSFORMATION

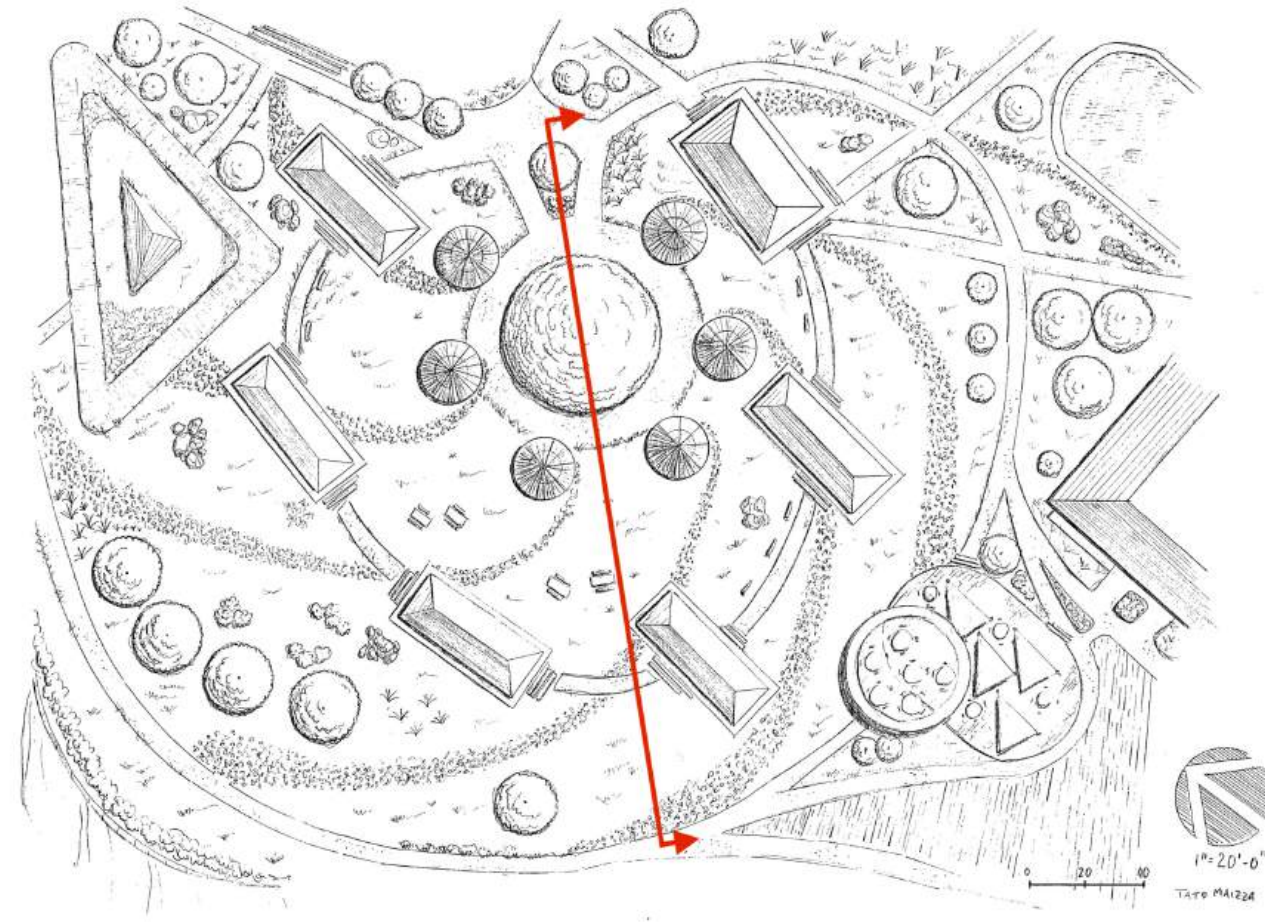
FLOW: GEOMETRIC TO ORGANIC



A good school will transform hard world views into flexible ideas, symbolized by geometric shapes and rectangular paths at the entrance flowing into curvy, organic pathways towards the inner part of the campus



SITE PLAN REDUX



SCALE: 1" = 20'-0"
TATO MAIZZA
12.03 2024

SECTION LINE

