

**MURPHY
SCULPTURE
GARDEN
REDEVELOPMENT**

**RYAN O'LEARY JONES
LANDSCAPE DESIGN 2
SPRING 2025**

THE CONCEPTS EXPLORE TWO JOURNEYS. A WHIMSICAL PATH THROUGH THE GARDEN AND A GROUNDED PATH.
 THE SCULPTURES ALONG THE WAY HELP TELL THAT JOURNEY.
 IN MY TAKE OF THESE SCULPTURES, I CREATED THREE CATEGORIES WITH THREE SCULPTURES EACH.
 ONE PATH WOULD FEATURE SCULPTURES THAT EXPLORE SPACE AND FORM. (1)
 ONE PATH WOULD HIGHLIGHT SCULPTURES SHOWING MEANING AND HUMAN EMOTION. (2)
 THE ACCESS POINTS GREET THE USER WITH SCULPTURES THAT BLUR THE LINE BETWEEN ART AND ENVIRONMENT. (3)

GROUP ONE



"ELEGY III", BARBARA HEPWORTH
 EXPLORATION OF SPACE AND FORM, MASS AND VOID RELATIONSHIPS



"HALFWAY", ANTHONY CARO
 IT'S UNCOMFORTABLE. STRUCTURAL ELEMENTS BUT IN A DISARRAY OF SORTS. STILL AN INTRIGUING LOOK AT FORM AND SPACE.



"BUTTON FLOWER", ALEXANDER CALDER
 A WHIMSICAL ABSTRACT SCULPTURE, REFLECTS A PLAYFUL APPROACH TO FORM AND BALANCE.

GROUP TWO



"ENCOUNTER VIII", LYNN CHADWICK
 TWO ABSTRACT FIGURES IN A POISED INTERACTION. THEY CONVEY A STRONG HUMAN EMOTION OF TENSION AND COMMUNICATION.



"BREACH", ALLISON SAAR
 A STOIC YET BURDED EXPRESSION OF A BLACK FEMALE FIGURE WHOSE STANCE AND PACKED BELONGINGS EVOKE THEMES OF RESILIENCE AND SURVIVAL.



"TREE PEOPLE", ALLISON SAAR
 FIGURES ROOTED LIKE TREES, MERGING HUMAN EMOTION WITH NATURE SUGGESTING A DEEP TIE TO THE EARTH.

GROUP THREE



"ABSTRACT PLAQUE", TONY ROSENTHAL
 A GEOMETRIC SCULPTURE THAT PLAYS WITH FORM AND SPACE WITH ITS ABSTRACT SHAPES AND CONSIDERS THE INTERPLAY BETWEEN ART AND ENVIRONMENT.

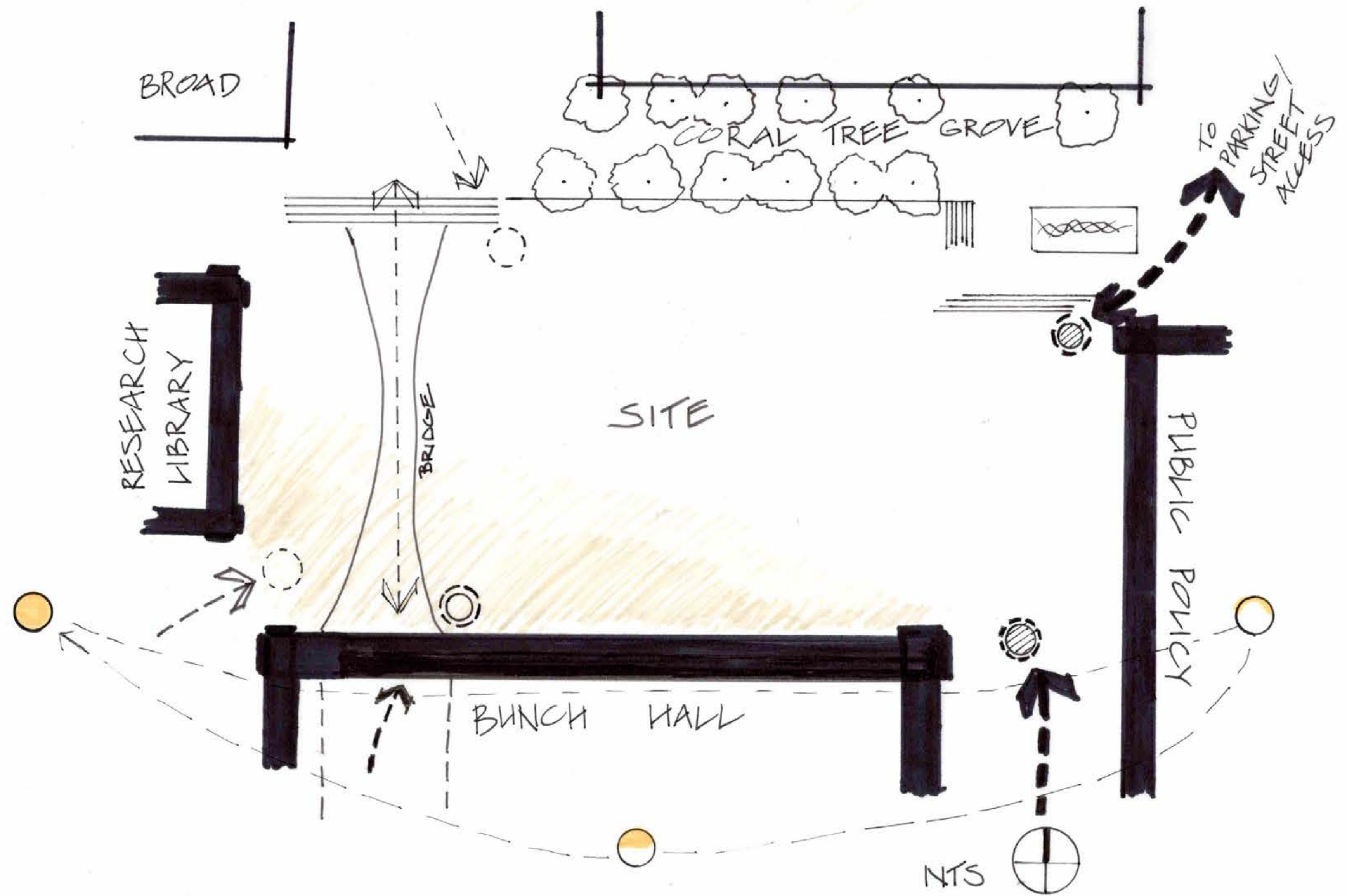
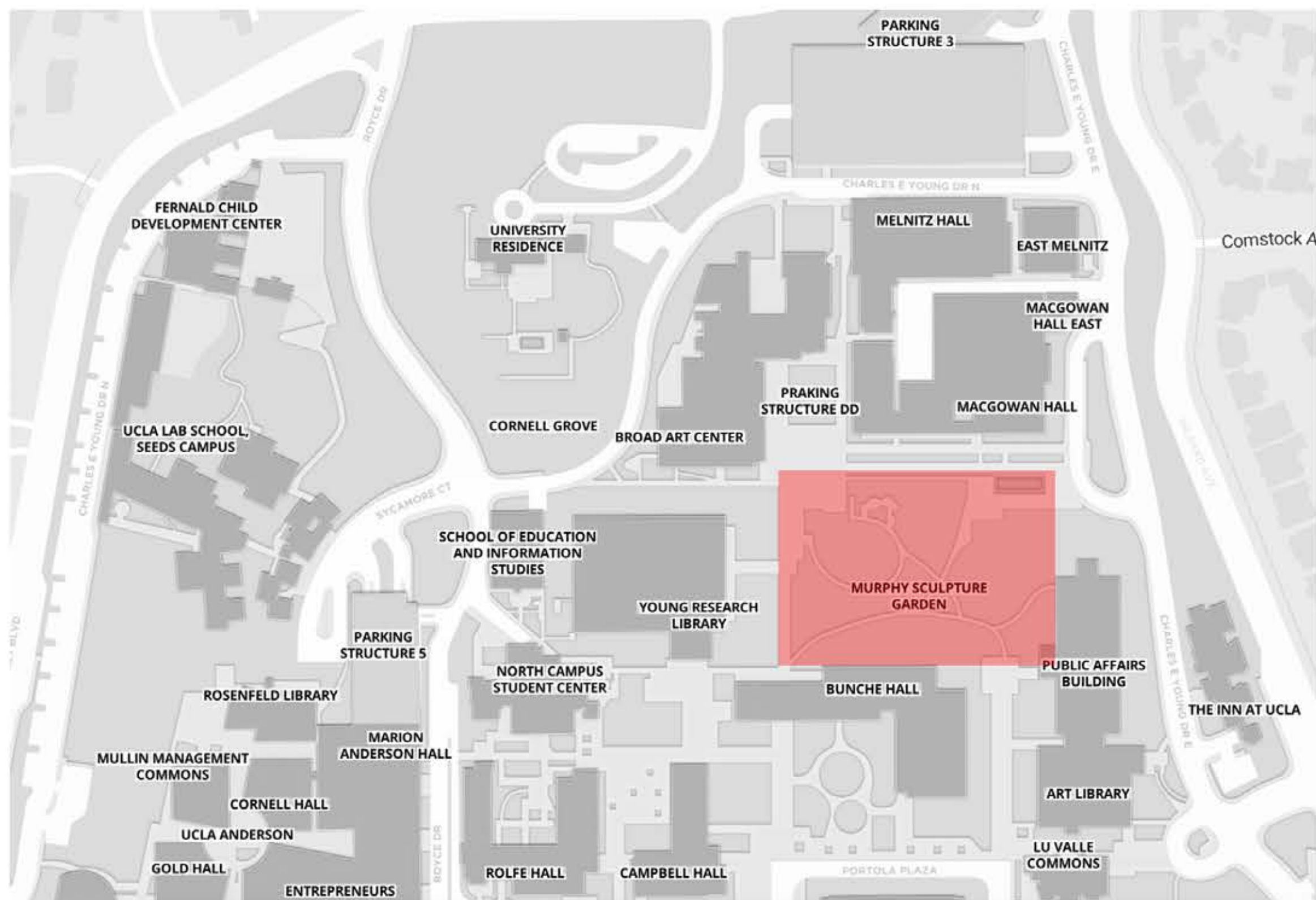


"GARDEN ELEMENTS", ISAMU NOGUCHI
 BLURRING THE BOUNDARIES BETWEEN ART AND ENVIRONMENT. IT INVITES CONTEMPLATION AND INTERACTION, EMBODYING A SERENE FUSION OF NATURE AND DESIGN.



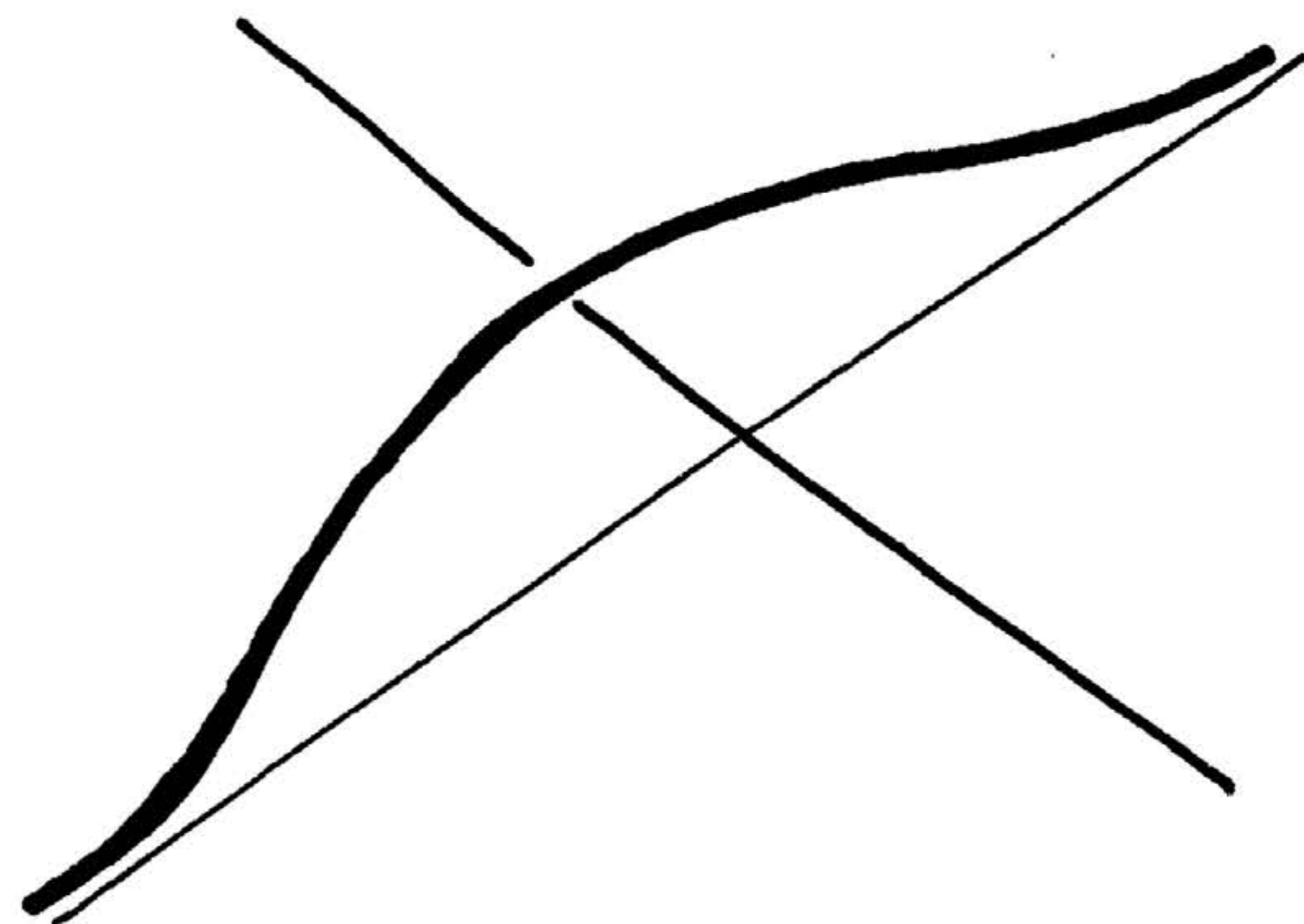
"TWO-PIECE RECLINING FIGURE NO. 3", HENRY MOORE
 THERE'S A DIVISION OF THE RECLINING FIGURE INTO TWO PARTS WHICH COULD EMPHASIZE THE INTERPLAY BETWEEN MASS AND SPACE.

SCULPTURES

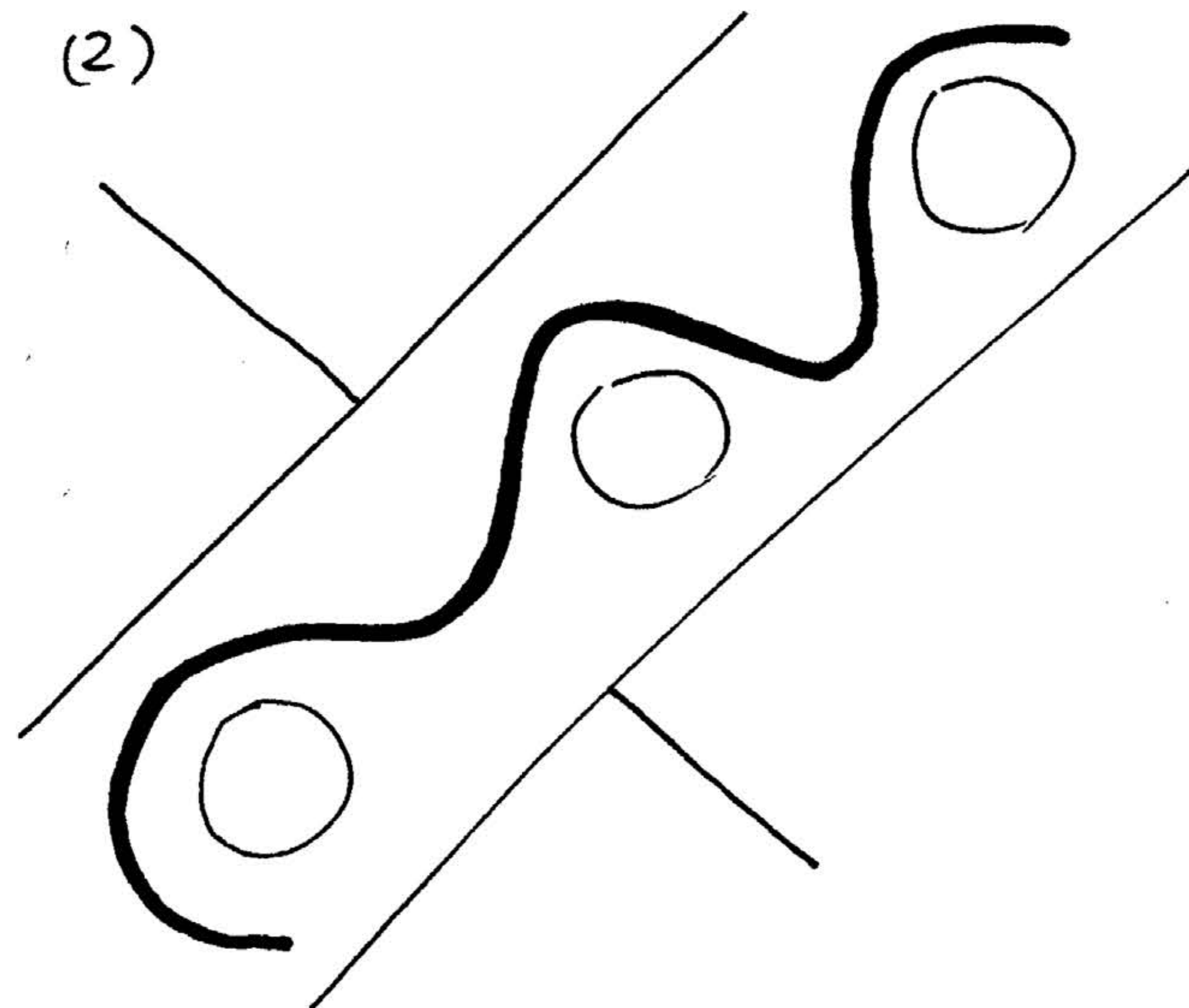


SITE ANALYSIS

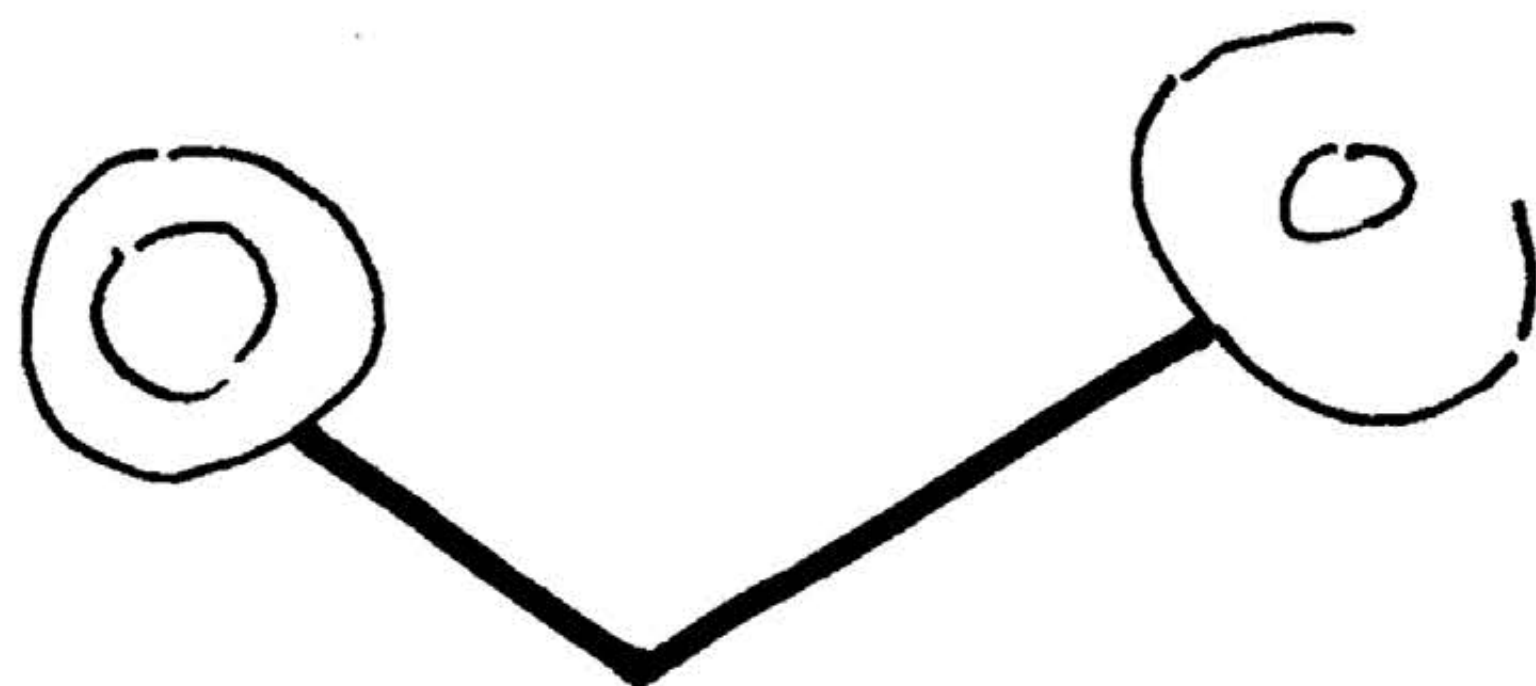
(1)



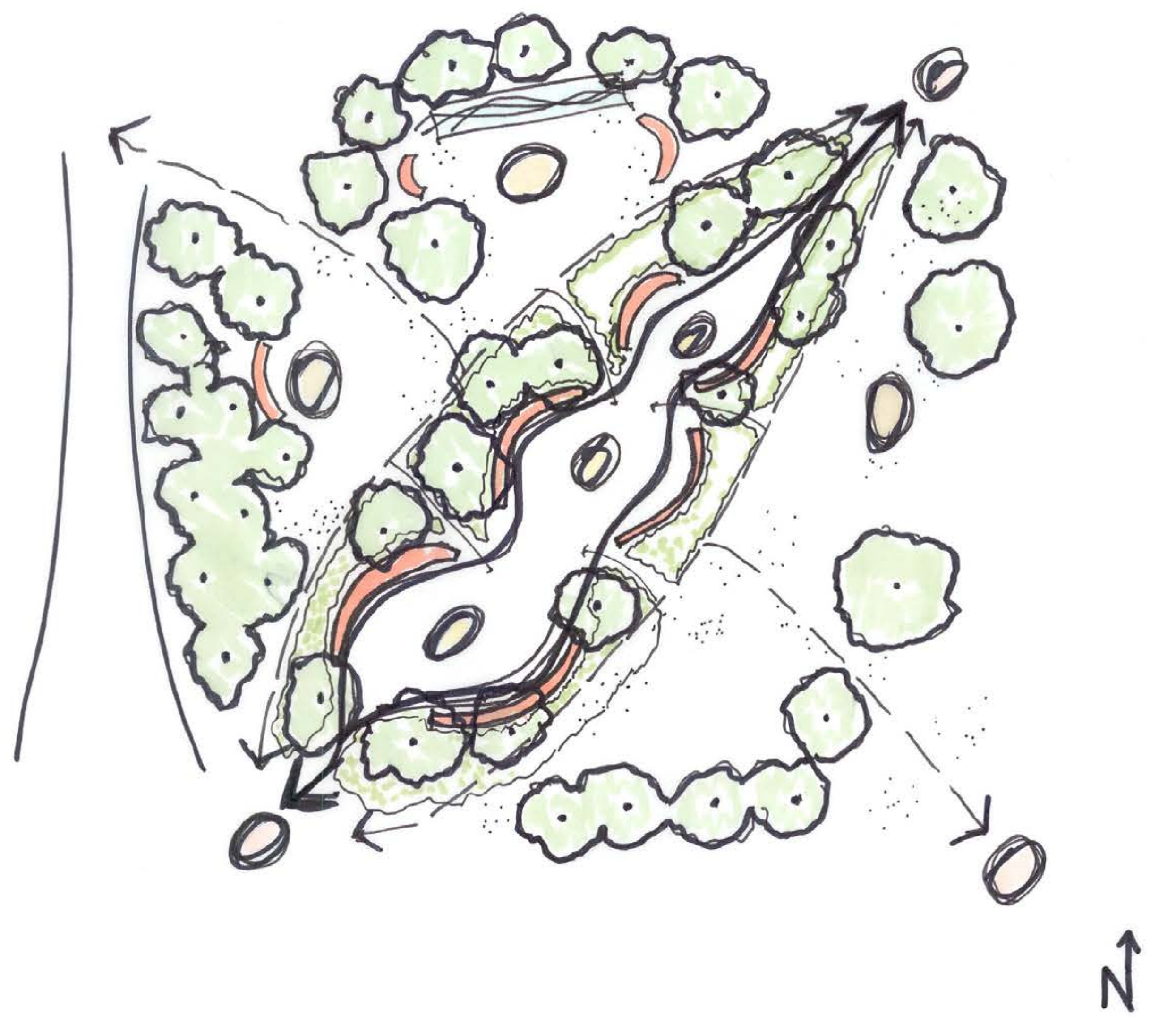
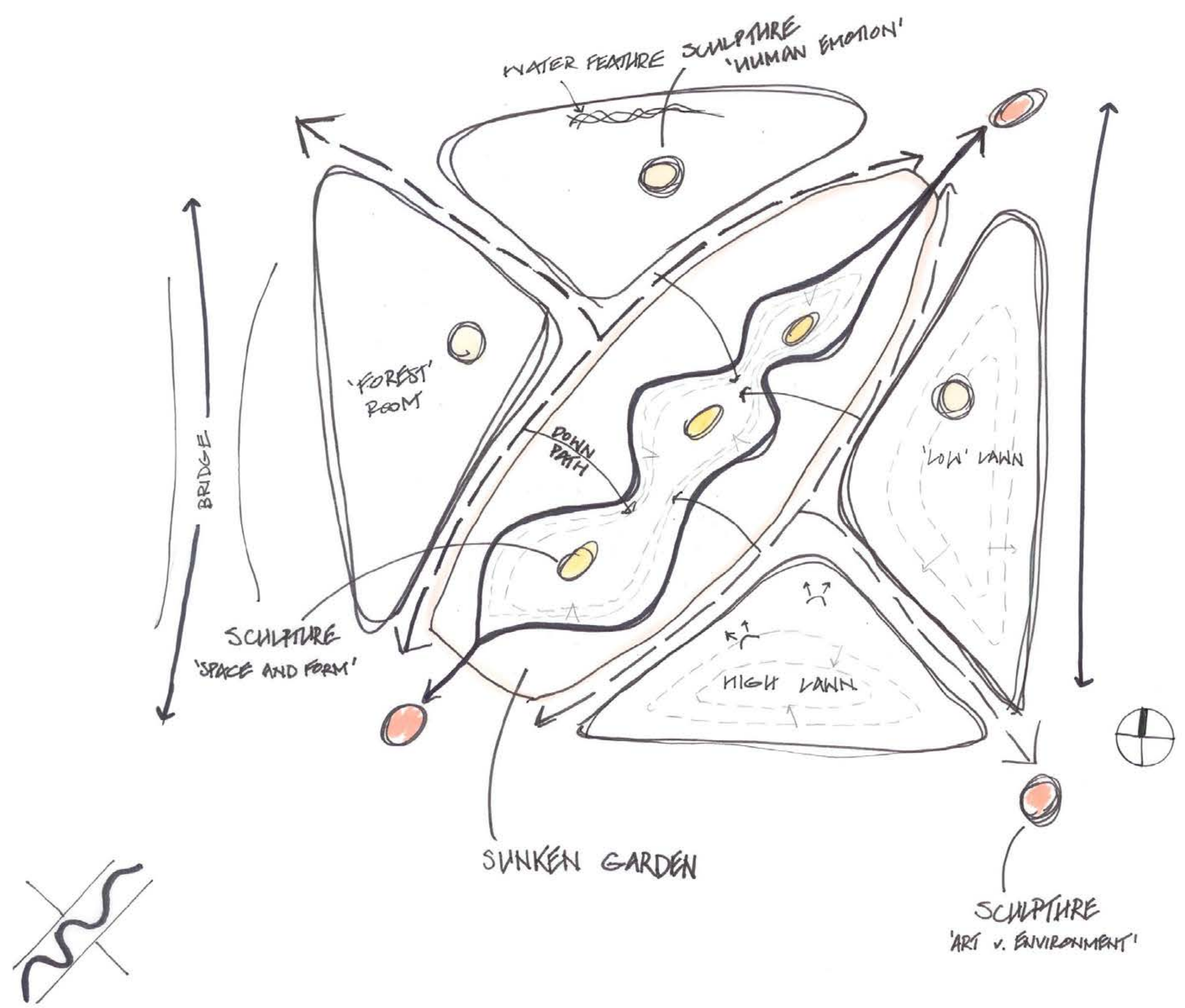
(2)



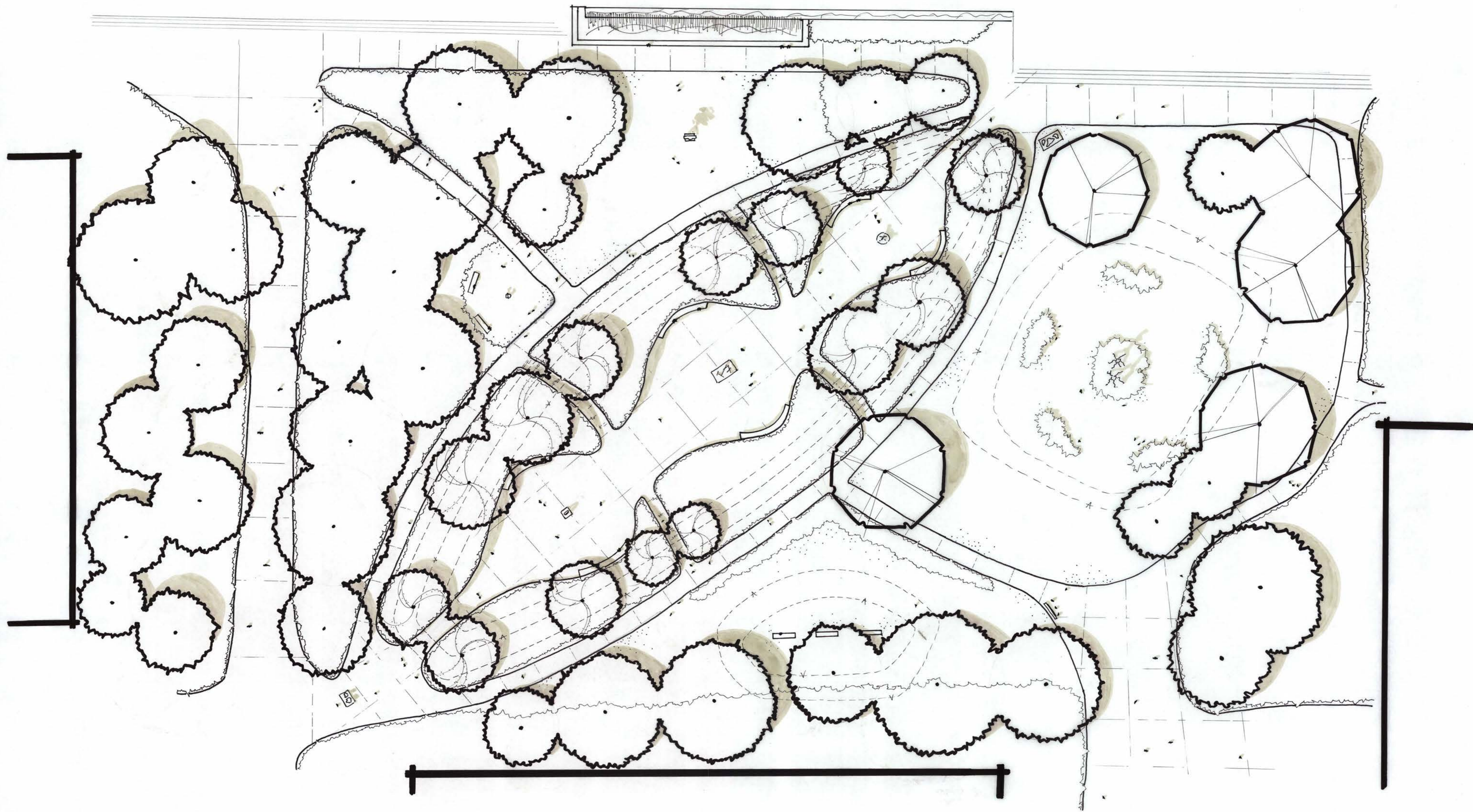
(3)



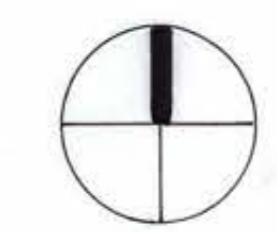
CONCEPT OPTIONS



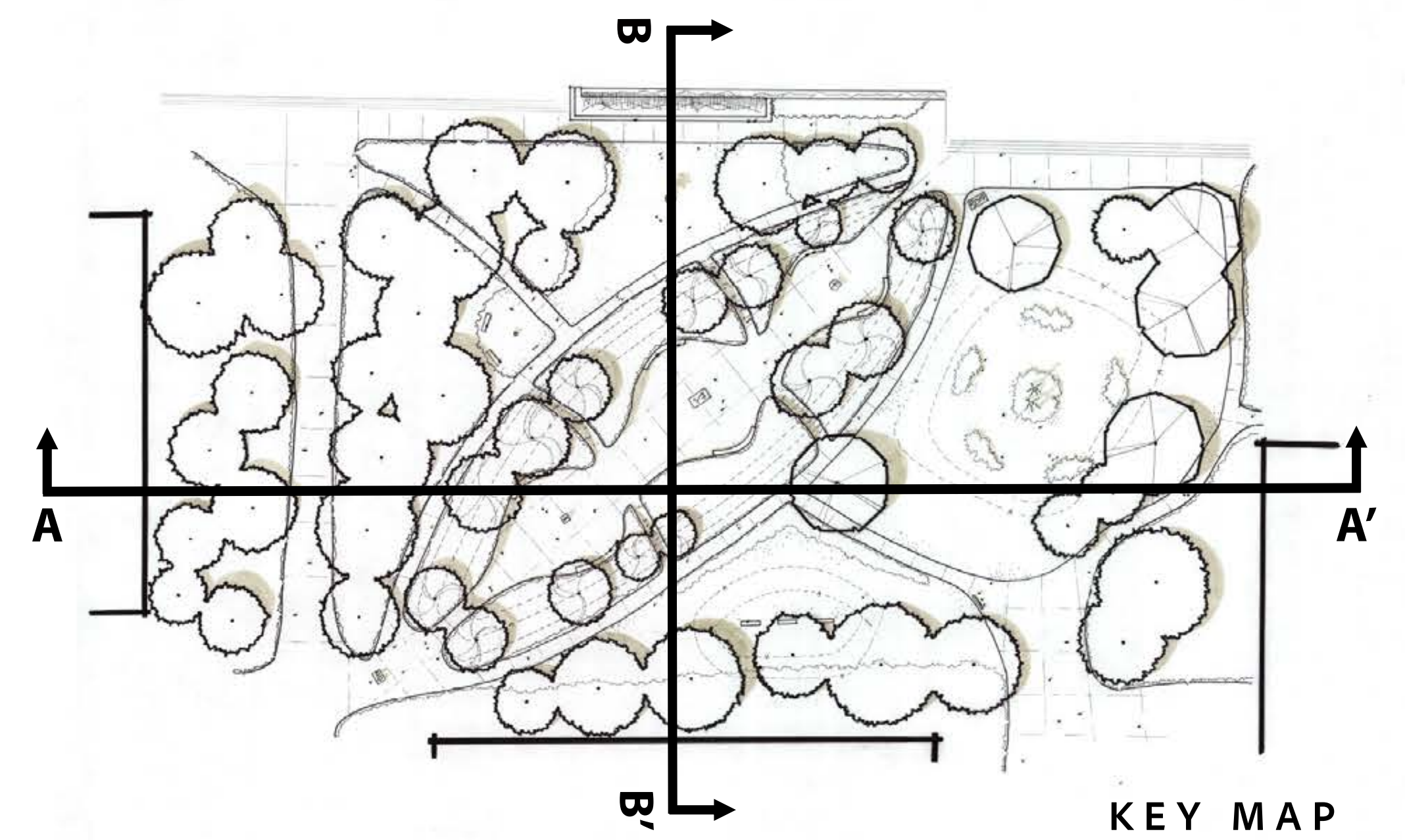
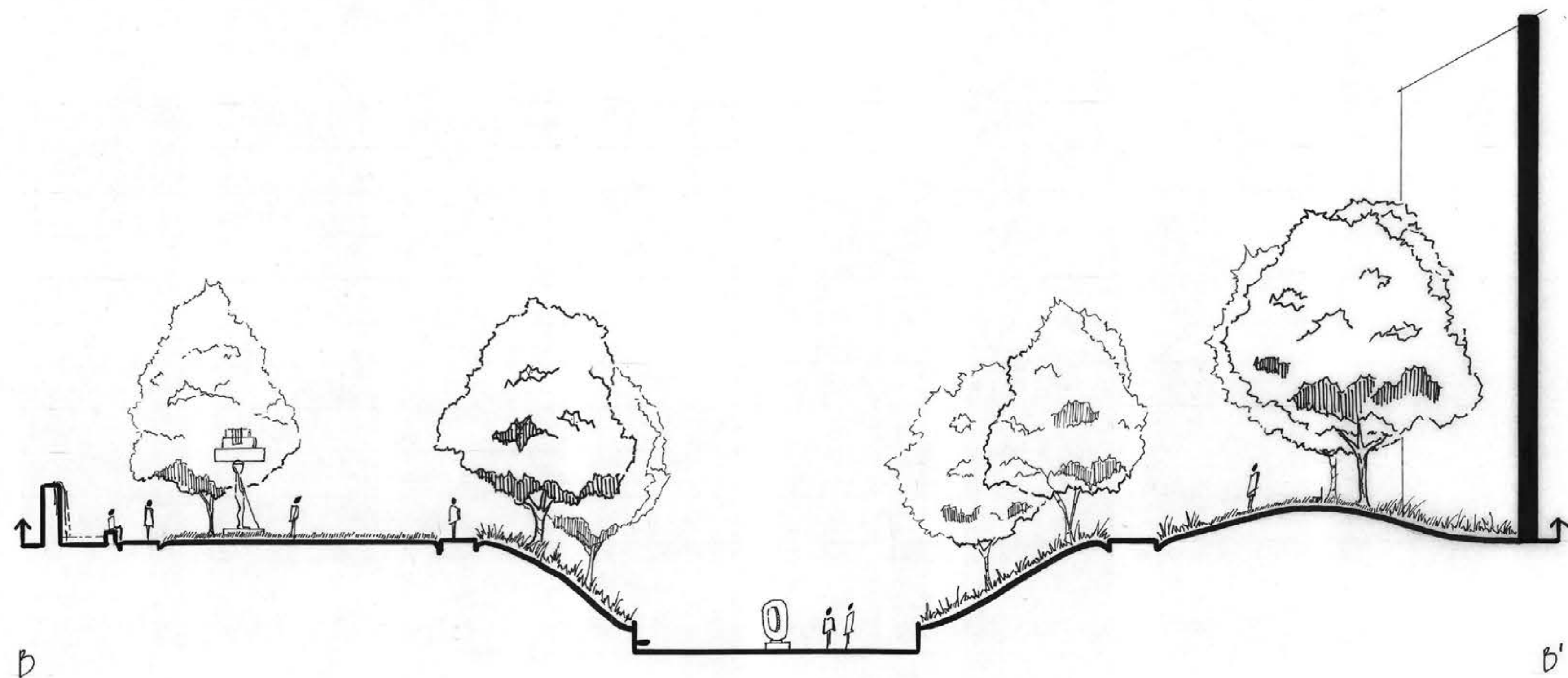
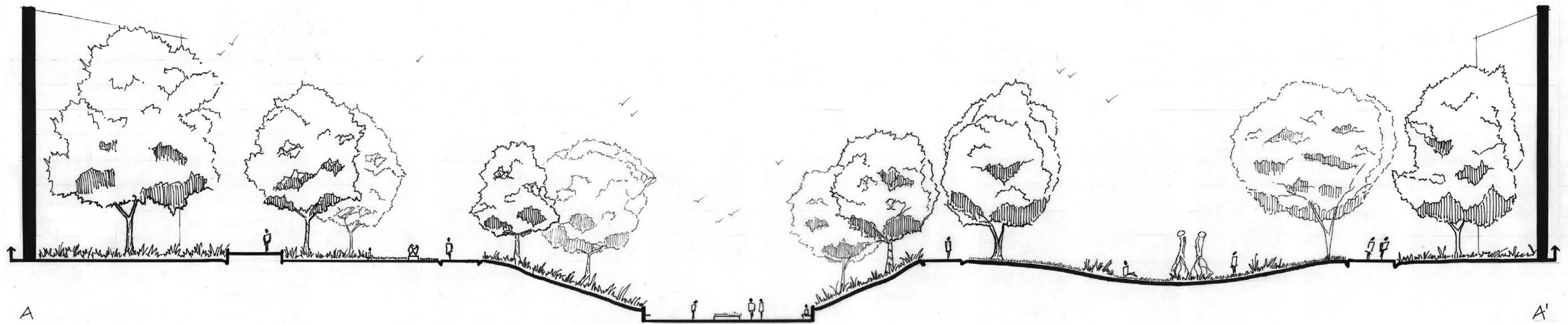
FINAL CONCEPT



SCALE 1"=20'



SITE PLAN



Horizontal Scale 1" = 20'

Vertical Scale 1" = 10'

SECTION / ELEVATIONS



"ENCOUNTER VIII", Lynn Chadwick



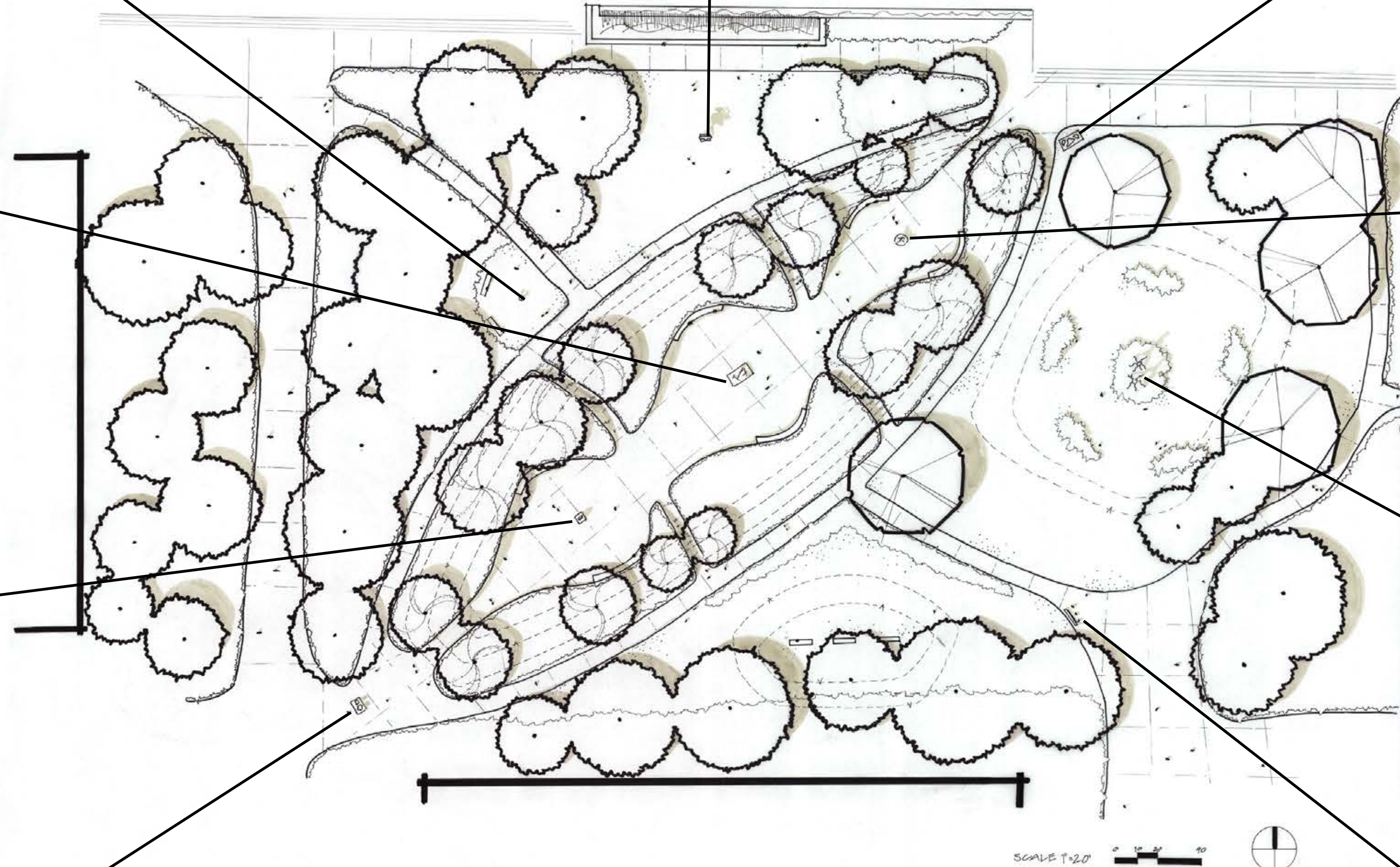
"BREACH", Allison Saar



"GARDEN ELEMENTS", Isamu Noguchi



"HALFWAY", Anthony Caro



"BUTTON FLOWER", Alexander Calder



"ELEGY III", Barbara Hepworth



"TREE PEOPLE", Allison Saar

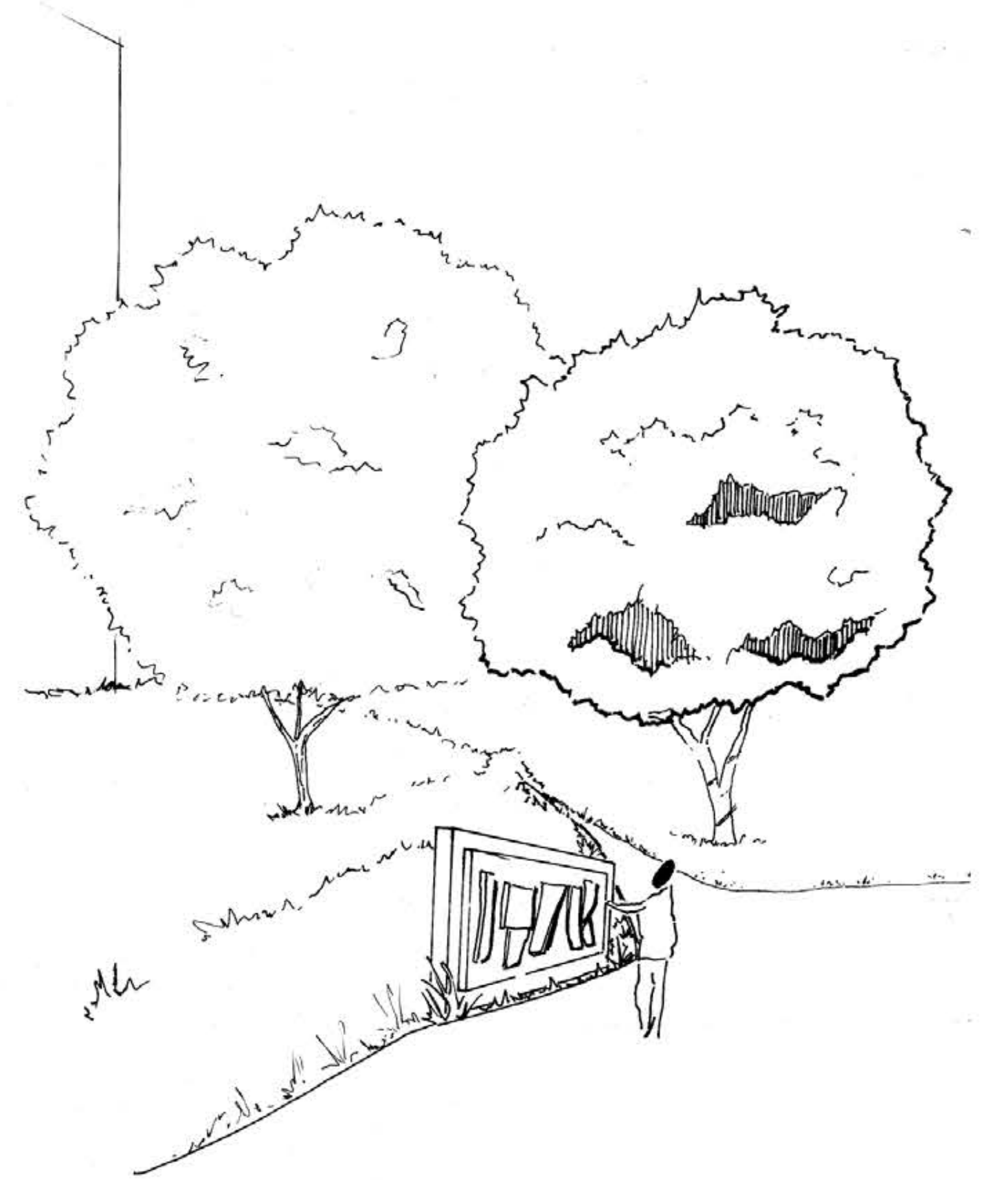
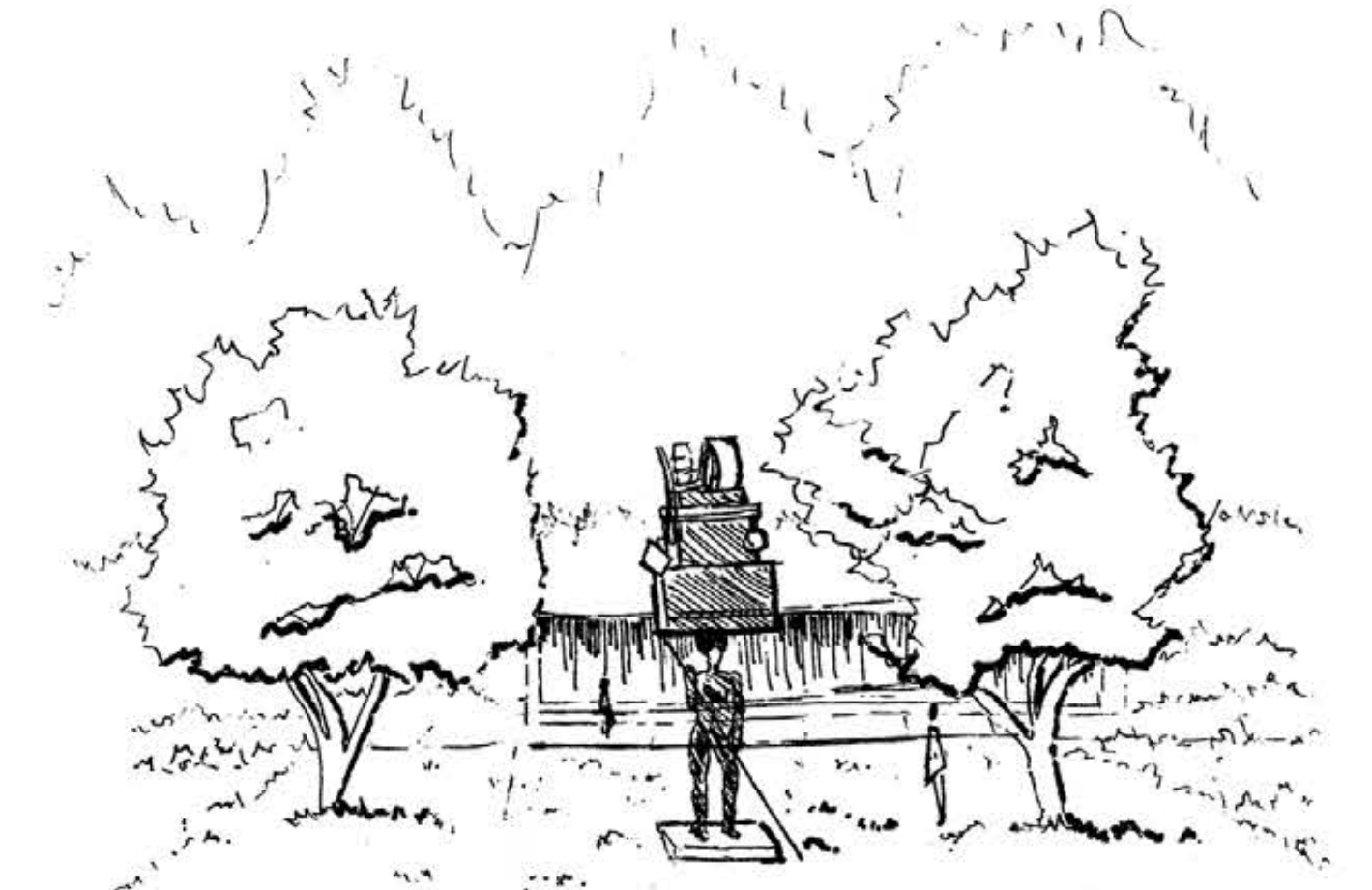
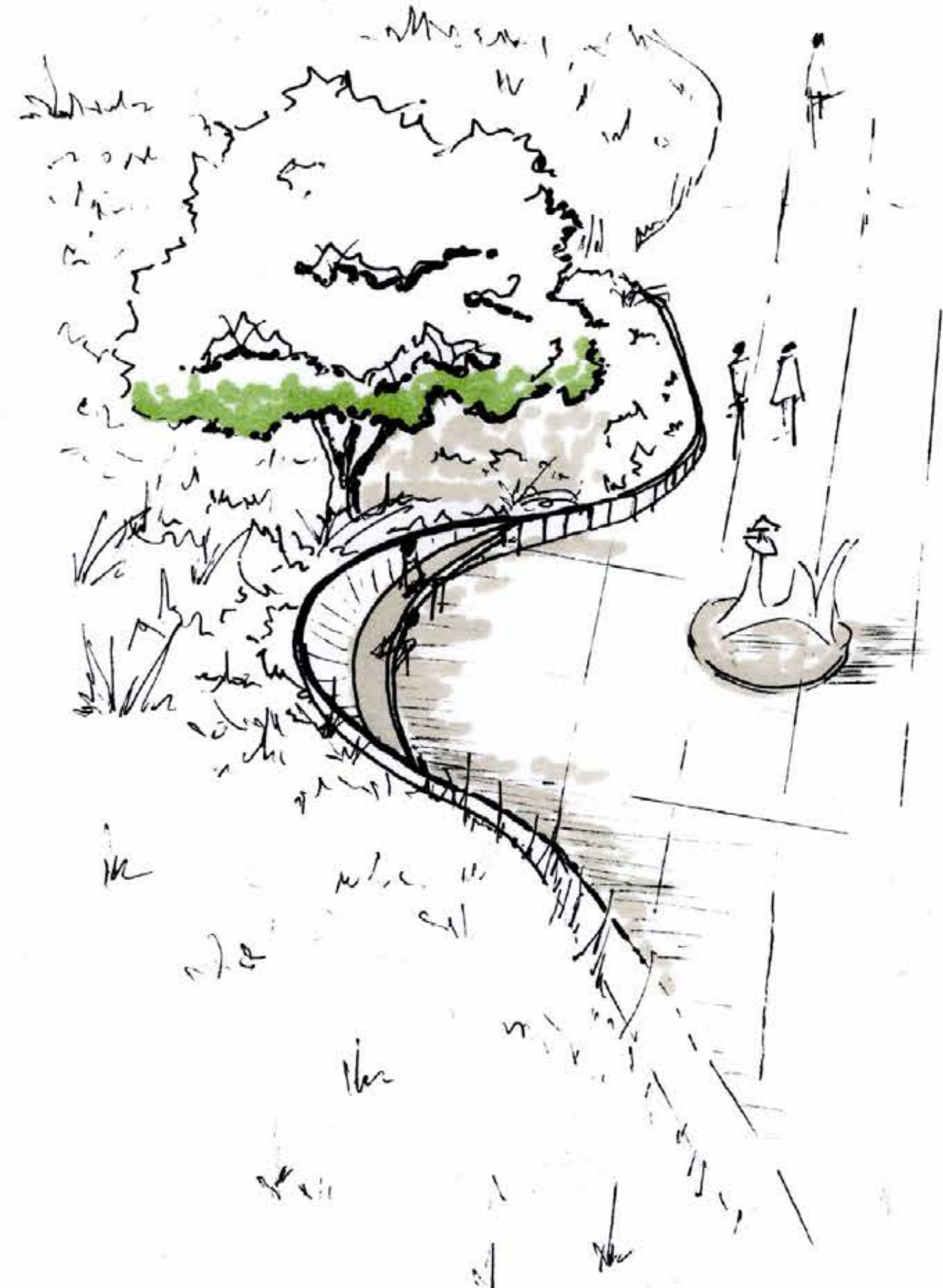
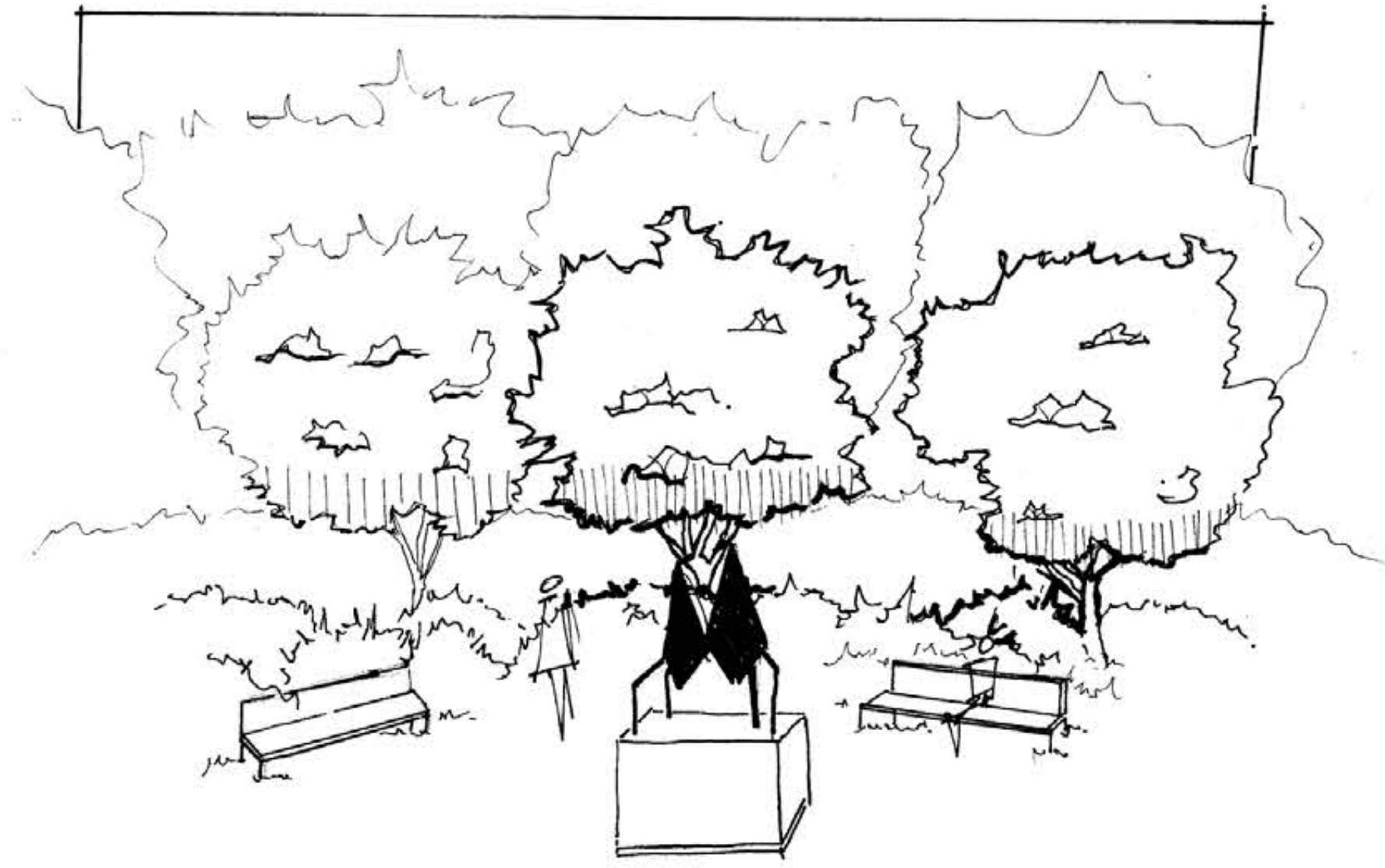


"TWO-PIECE RECLINING FIGURE NO. 3", Henry Moore



"ABSTRACT PLAQUE", Tony Rosenthal

SCULPTURE LOCATION MAP



SKETCHES