



PATRESE WINTER

HOLY SPIRIT RETREAT CENTER
SPIRITUAL REFLECTION, ECOLOGICAL RESPONSIBILITY
& EMPOWERING WOMEN.

UCLA Extension
LANDSCAPE ARCHITECTURE
LD 5: Planting Design
ARCH-X 472.8
Prof.: Pamela Brief
SPRING / 2025



THE BIG IDEA	4
HISTORY	5
LOCATION & SITE CONTEXT	6
SITE ANALYSES	7
CIRCULATION	8
PLANT INVENTORY	9
FAUNA	10
CONSTRAINTS & OPPORTUNITIES	11
GOALS & OBJECTIVES	12
CONCEPTUAL DIAGRAM	13
PLANTING HIERARCHY	14
A-HA MOMENT	15
TREE PLANTING PLAN	16
SHRUBS & GROUND COVER PLANTING PLAN	17
SISTERS MARGARET & FREDERICA GARDENS	18
ST. MARTHA GARDEN	21
ST. TERESA OF AVILA'S GARDEN	25
ST. HILDEGARD'S GARDEN	27
ST. KATERI'S SANCTUARY	29
FINAL THOUGHT	30
CREDITS	31
APPENDIX	32



TABLE OF CONTENTS

A landscape of spiritual reflection and ecological responsibility that empowers women, fosters healing spaces, celebrates edible abundance, and restores biodiversity for a sustainable future.



HEALING



ABUNDANCE



BIODIVERSITY



EMPOWERMENT

THE BIG IDEA



*A Ministry of the
Sisters of Social Service
since 1927*



*Sister Margaret Slachta
Sister Frederica Horvath
Foundresses
Sisters of Social Service*

A Legacy of Service and Renewal: The History of the Holy Spirit Retreat Center

The Holy Spirit Retreat Center in Encino, CA, is deeply rooted in the rich history and mission of the Sisters of Social Service (SSS)—a community dedicated to social justice, spiritual renewal, and empowering those in need. The Sisters were founded in Hungary in 1923 by Sister Margaret Slachta, a pioneer in social work and advocacy, who was also the first woman elected to the Hungarian Parliament. Their mission, inspired by the Catholic Church’s call for social action, blended Benedictine spirituality with a commitment to addressing systemic issues affecting women, children, and marginalized communities. As their work expanded globally, they arrived in Los Angeles in 1926, establishing their first headquarters in what became known as The Little Brown House. From there, the Sisters actively worked in social services, education, and faith-based outreach, creating programs to support immigrants, children, and those living in poverty.

In response to the growing need for spiritual retreats and renewal for women, the Sisters founded the first retreat center for women in the Archdiocese of Los Angeles in the Mid-Wilshire district in the 1930s, at the request of Archbishop Cantwell. By 1969, they relocated to Encino, where their former Novitiate was transformed into the Holy Spirit Retreat Center. The move allowed them to expand their mission, offering retreats for both men and women, providing a place of peace, counseling, and healing. With its serene natural landscape and open spaces, the center became a refuge for individuals seeking contemplation, spiritual guidance, and community connection.

A pivotal moment in the 1970s reinforced the Holy Spirit Retreat Center’s interfaith mission. Rabbi Mailer of Temple Akiba in Culver City approached the Sisters about hosting a Jewish Marriage Encounter Weekend, a request they enthusiastically embraced. This collaboration reflected the Sisters’ deep connection to the Jewish community, dating back to their role in protecting Jewish families in Hungary during the Nazi invasion. From this experience, the retreat center became a true sanctuary for people of all faiths—and even those without faith—committed to fostering mutual respect, hospitality, and inclusivity.

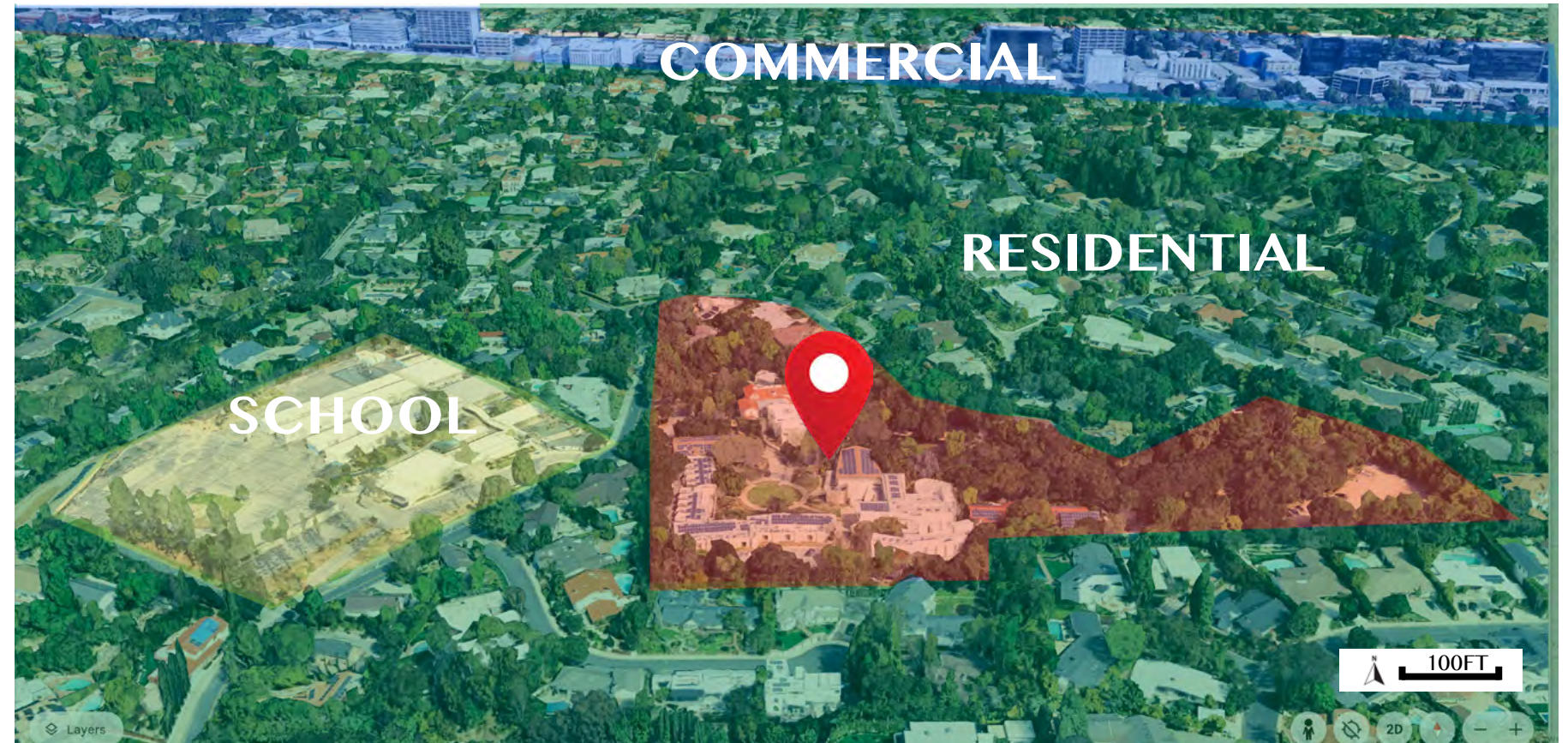
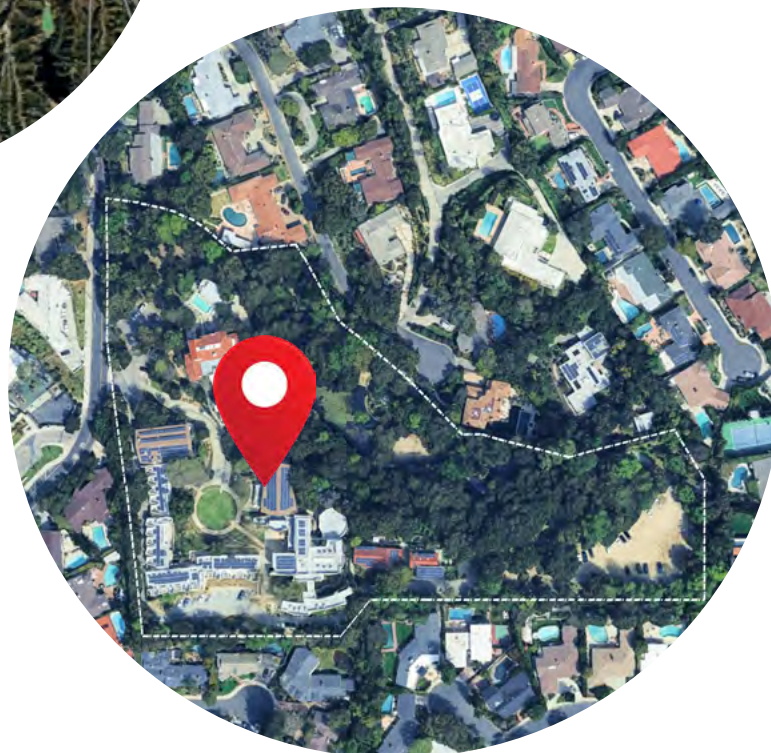
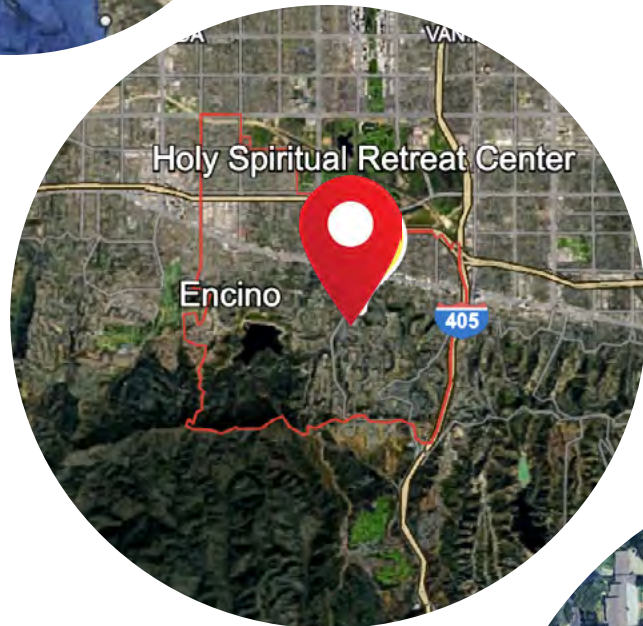
Today, the Holy Spirit Retreat Center in Encino continues to honor this legacy, welcoming over 19,000 visitors annually seeking spiritual renewal, healing, and connection to nature. The center remains a beacon of peace and transformation, offering programs that support mental well-being, interfaith dialogue, and social justice. The land itself is an integral part of this mission—its quiet wooded beauty enhances the retreat experience, providing a natural sanctuary for reflection and personal growth. As landscape architects, we have the opportunity to preserve and enhance this sacred space, ensuring that its gardens and landscapes remain places of renewal, inclusion, and inspiration for generations to come.

HISTORY

LOCATION

HOLY SPIRIT RETREAT CENTER

4316 LANAI RD, ENCINO, CA 91436



SITE CONTEXT

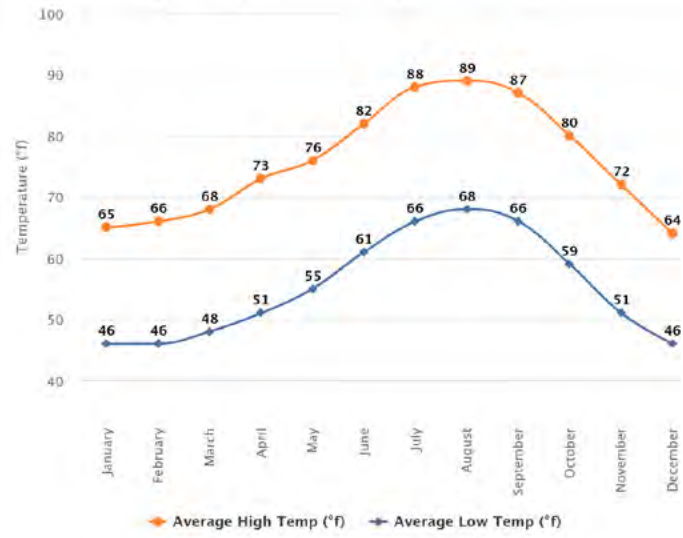
The Holy Spirit Retreat Center, located at 4316 Lanai Rd, Encino, CA 91436, is situated adjacent to Lanai Road Elementary School, a public school serving students from Universal Transitional Kindergarten (UTK) through 5th grade.

The retreat center is nestled within a tranquil residential neighborhood in the Encino Hills, offering a peaceful environment that complements its mission of providing an atmosphere of prayer and hospitality.

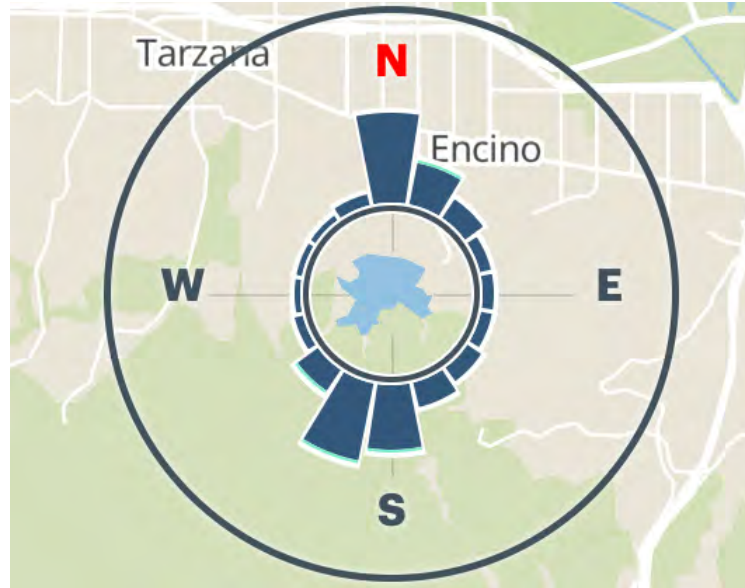
Despite its serene setting, the center remains easily accessible, being just minutes away from Ventura Boulevard, a bustling commercial corridor in Encino. Ventura Boulevard is lined with a variety of restaurants, shops, and businesses, providing convenient amenities for visitors and staff of the retreat center.

This unique location offers a harmonious blend of seclusion and accessibility, making the Holy Spirit Retreat Center an ideal place for reflection and spiritual growth while still being connected to the vibrant life of Encino.

SITE ANALYSES



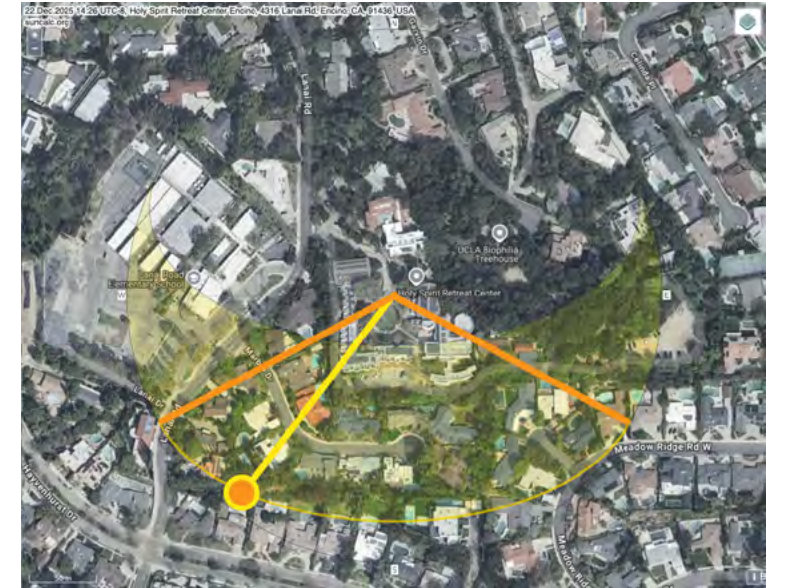
TEMPERATURE



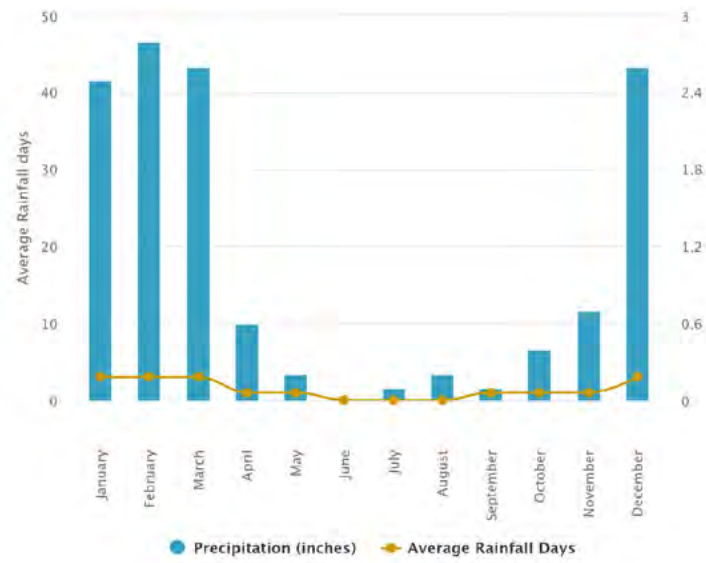
PREVAILING WINDS



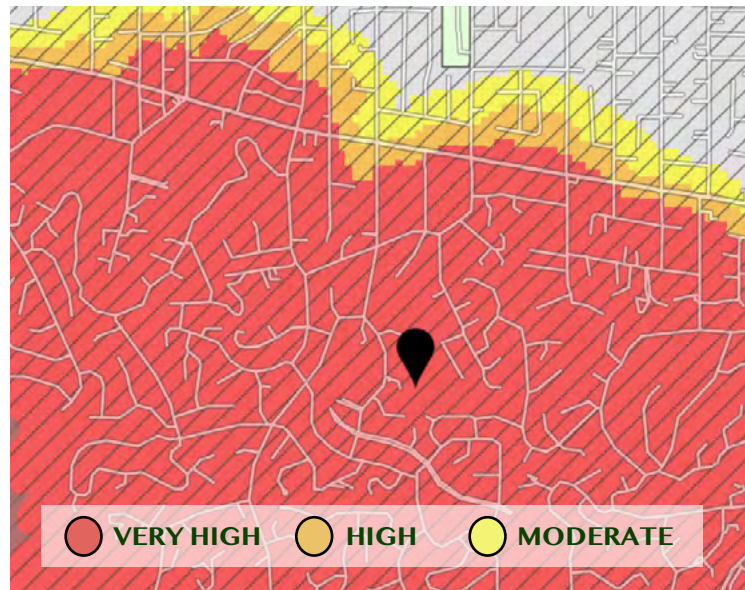
SUN PATH - SPRING



SUN PATH - SUMMER



RAINFALL



FIRE HAZARD

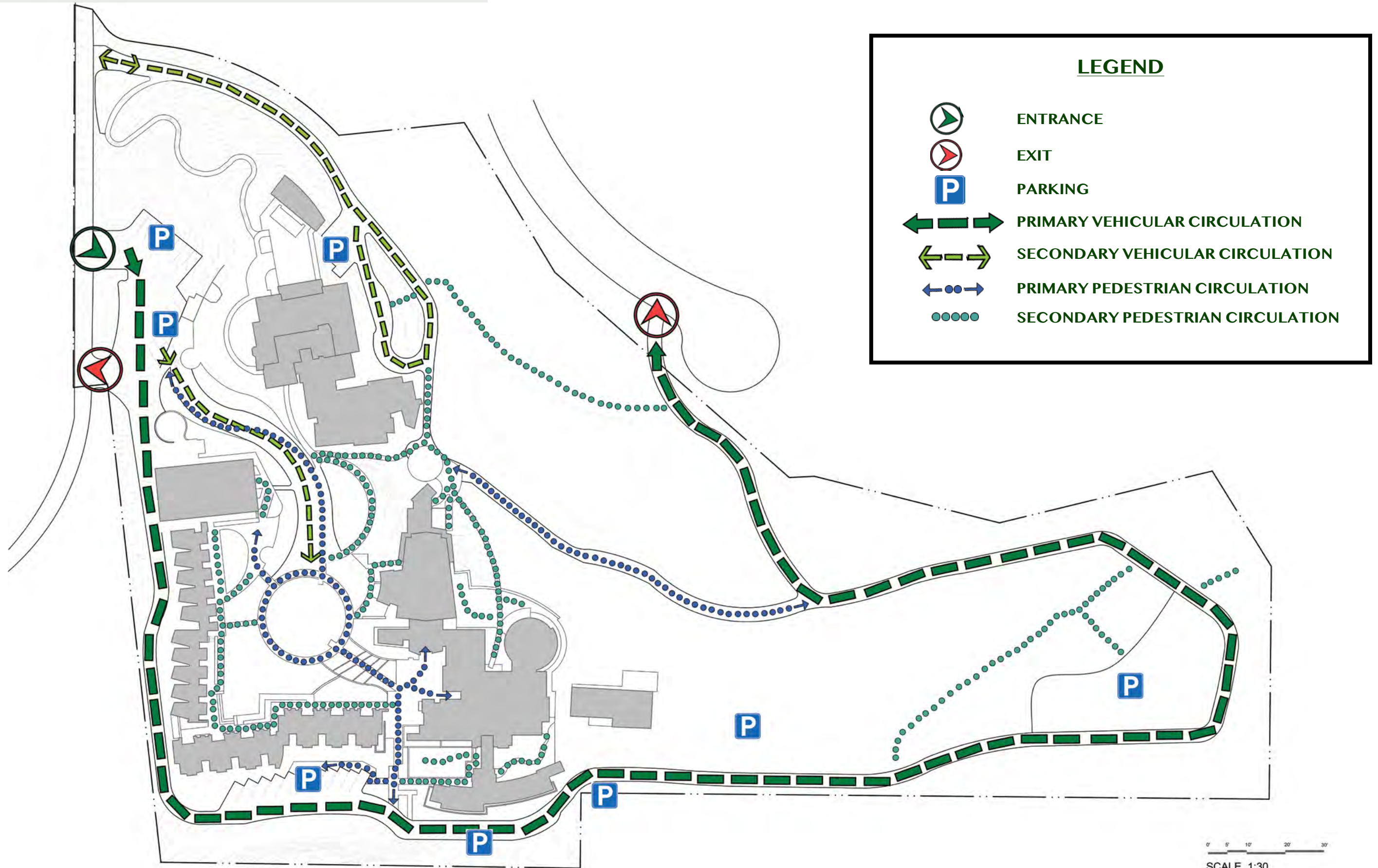


SUN PATH - FALL



SUN PATH - WINTER

CIRCULATION



PLANT INVENTORY



Pyracantha coccinea



Spartium junceum



Clivia miniata



Lantana camara



Crassula ovata



Quercus agrifolia



Callistemon citrinus



Senecio talinoides



Liriope muscari



Bougainvillea glabra



Leucophyllum frutescens



Platanus racemosa



Euryops peotinus



Dietes grandiflora



Festuca Arundinacea



Strelitzia reginae



Lavandula stoechas



Vinca major



Aeonium arboreum



Rosa spp. 'iceberg'



Rumohra adiantiformis



Malva assurgentiflora



Festuca glauca



Osteospermum ecklonis

FAUNA

Mammals:

- Raccoon (*Procyon lotor*)
- Striped Skunk (*Mephitis mephitis*)
- Virginia Opossum (*Didelphis virginiana*)
- California Ground Squirrel (*Otospermophilus beecheyi*)
- Western Gray Squirrel (*Sciurus griseus*)
- Botta's Pocket Gopher (*Thomomys bottae*)

Birds:

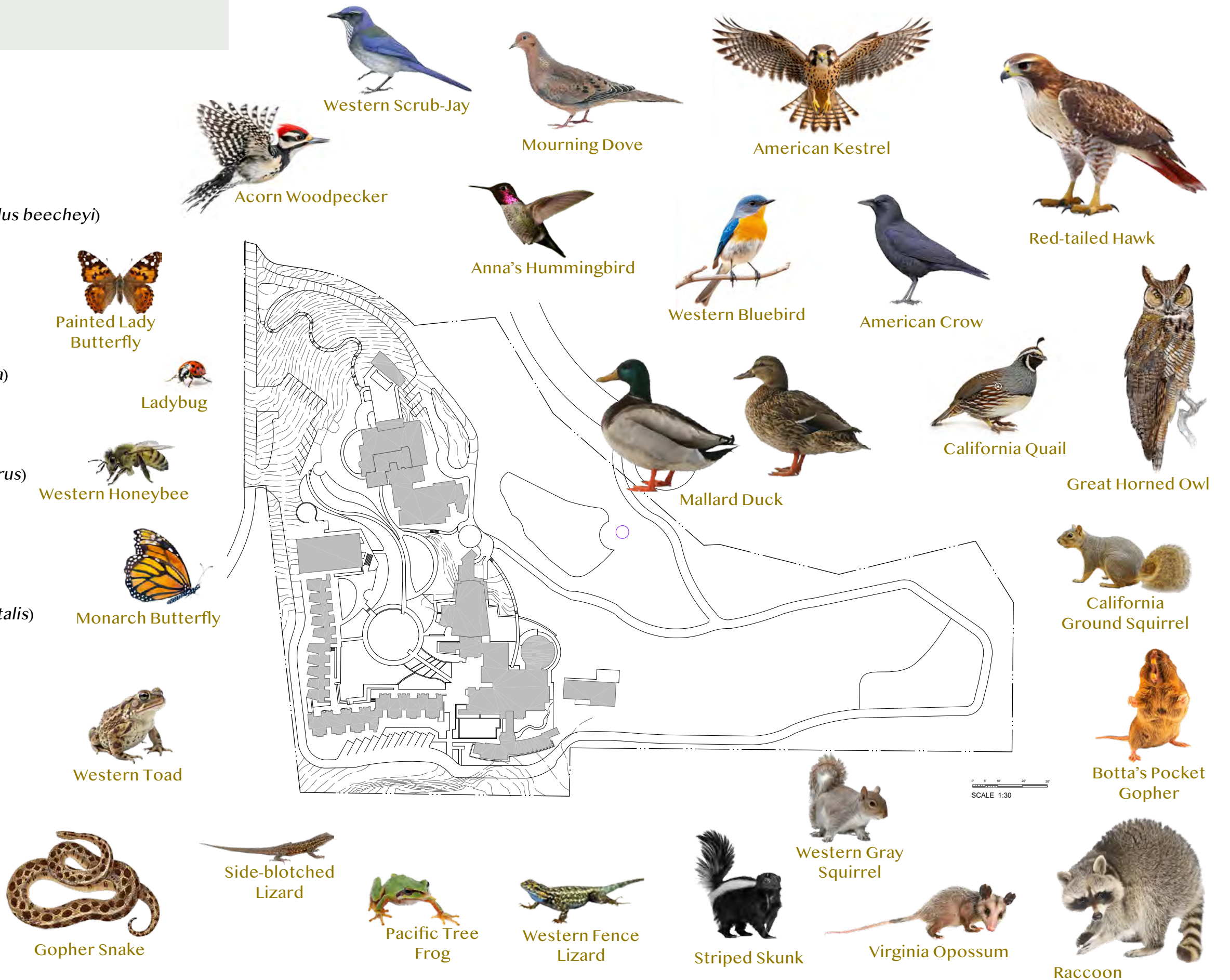
- Red-tailed Hawk (*Buteo jamaicensis*)
- Great Horned Owl (*Bubo virginianus*)
- Western Scrub-Jay (*Aphelocoma californica*)
- American Crow (*Corvus brachyrhynchos*)
- Mourning Dove (*Zenaida macroura*)
- Mallard Duck (*Anas platyrhynchos*)
- Anna's Hummingbird (*Calypte anna*)
- Acorn Woodpecker (*Melanerpes formicivorus*)
- Western Bluebird (*Sialia mexicana*)
- American Kestrel (*Falco sparverius*)
- California Quail (*Callipepla californica*)

Reptiles & Amphibians:

- Western Fence Lizard (*Sceloporus occidentalis*)
- Gopher Snake (*Pituophis catenifer*)
- Western Toad (*Anaxyrus boreas*)
- Pacific Tree Frog (*Pseudacris regilla*)
- Side-blotched Lizard (*Uta stansburiana*)

Insects & Pollinators:

- Western Honeybee (*Apis mellifera*)
- Monarch Butterfly (*Danaus plexippus*)
- Painted Lady Butterfly (*Vanessa cardui*)
- Ladybug (Coccinellidae spp.)



CONSTRAINTS



INEFFICIENT WATER USE AND IRRIGATION

- Mixed water-use plants (e.g., oaks and roses) competing for incompatible irrigation needs.
- Inefficient irrigation systems causing both under- and over-watering.
- Water waste through poorly placed sprinklers and runoff.



LIMITED BIODIVERSITY AND SUSTAINABILITY FEATURES

- Plant selection does not support pollinators.
- Overreliance on traditional ornamentals (e.g., roses) vs. native/drought-tolerant species.
- Missed potential to reduce urban heat island effect further with strategic planting.



LACK OF COHESION IN PLANTING DESIGN

- Lack of visual unity and design identity in planting layout.
- Inappropriate species placement (e.g., under oak canopies) leading to plant stress.
- Yellowed and sparse roses with high maintenance needs and limited ecological value.



POOR SOIL HEALTH AND HIGH MAINTENANCE

- Compacted and nutrient-deficient soil despite organic leaf litter.
- Presence of gophers, weeds, and signs of inconsistent maintenance.
- Labor-intensive upkeep required for high-maintenance species like roses.



LIMITED COMFORT, PRIVACY, AND ENGAGEMENT

- Limited and poorly placed seating.
- Few defined gathering spaces for rest or contemplation.
- Lack of privacy near the parking area.
- Space is used mainly for circulation—not engagement or relaxation.

OPPORTUNITIES

WATER-WISE PLANTING AND IRRIGATION STRATEGY

- Replace high-water plants with low-water, Mediterranean and native species.
- Redesign irrigation system with hydrozones and drip irrigation for water efficiency
- Capture and reuse runoff through rain gardens or swales.



SUPPORT BIODIVERSITY AND POLLINATOR HABITAT

- Support Biodiversity and Pollinator Habitat
- Add pollinator-friendly species to attract butterflies, bees, and beneficial insects.
- Create habitat zones through layered plantings for birds and small wildlife.
- Use California natives and edibles to reflect the values of nourishment and healing.



ENHANCE IDENTITY THROUGH PLANTING AND THEME

- Organize plantings to form distinct outdoor rooms for reflection, gathering, and meditation.
- Use layering (groundcovers, shrubs, trees) to create depth and enclosure.
- Integrate aromatic, soft-textured, and healing plants for a sensory experience.
- Incorporate artistic or symbolic features (e.g., labyrinths, sculptures, water features).



CELEBRATE WOMEN'S STRENGTH AND LEGACY

- Incorporate interpretive signage or plaques that share their stories and virtues
- Use sculptures, symbolic plantings, or spiritual art to honor their contributions and inspire reflection.



IMPROVE COMFORT, GATHERING, AND ACCESSIBILITY

- Add inviting, shaded seating areas with a variety of arrangements (solo, group, and accessible spaces for all ages and abilities). Introduce privacy screens or low hedges near public-facing areas like the parking lot.
- Redesign lawn areas into multi-use gardens for rest, community, or ecological benefit.
- Use clear, navigable paths with ADA-compliant materials and signage in multiple languages and visual formats.



GOALS & OBJECTIVES



CREATE HEALING SPACES FOR REFLECTION AND WELLBEING

- Design meditation nooks and quiet seating areas under natural shade.
- Use sensory-rich plantings (fragrance, texture, sound) to promote calm and mindfulness.
- Incorporate contemplative pathways and spiritual elements to support emotional renewal.



PROMOTE NOURISHMENT THROUGH EDIBLE AND SHARED LANDSCAPES

- Develop a thriving food garden with fruit trees, herbs, and vegetables.
- Create accessible harvesting areas to foster community engagement.
- Provide gathering spaces for reflection, sharing, and learning.



SUPPORT BIODIVERSITY AND ECOLOGICAL HEALTH

- Plant native and Mediterranean species to attract pollinators, birds, and beneficial insects.
- Establish layered habitats—trees for perching, shrubs for cover, and flowering plants for nectar.
- Remove invasive or outdated species to restore ecological balance.



ENHANCE SUSTAINABILITY AND CLIMATE RESILIENCE

- Replace outdated landscaping with drought-tolerant, climate-adapted plant palettes.
- Implement efficient irrigation systems, hydrozoning, and natural stormwater solutions.
- Ensure low-maintenance, durable landscapes that adapt to future climate conditions.



REIMAGINE AND REVITALIZE OUTDATED SPACES

- Redesign deteriorated or underutilized areas to improve functionality, beauty, and purpose.
- Enhance circulation, gathering spaces, and seating areas to better serve retreat visitors.
- Reflect the mission of the Sisters of Social Service through uplifting, intentional design.

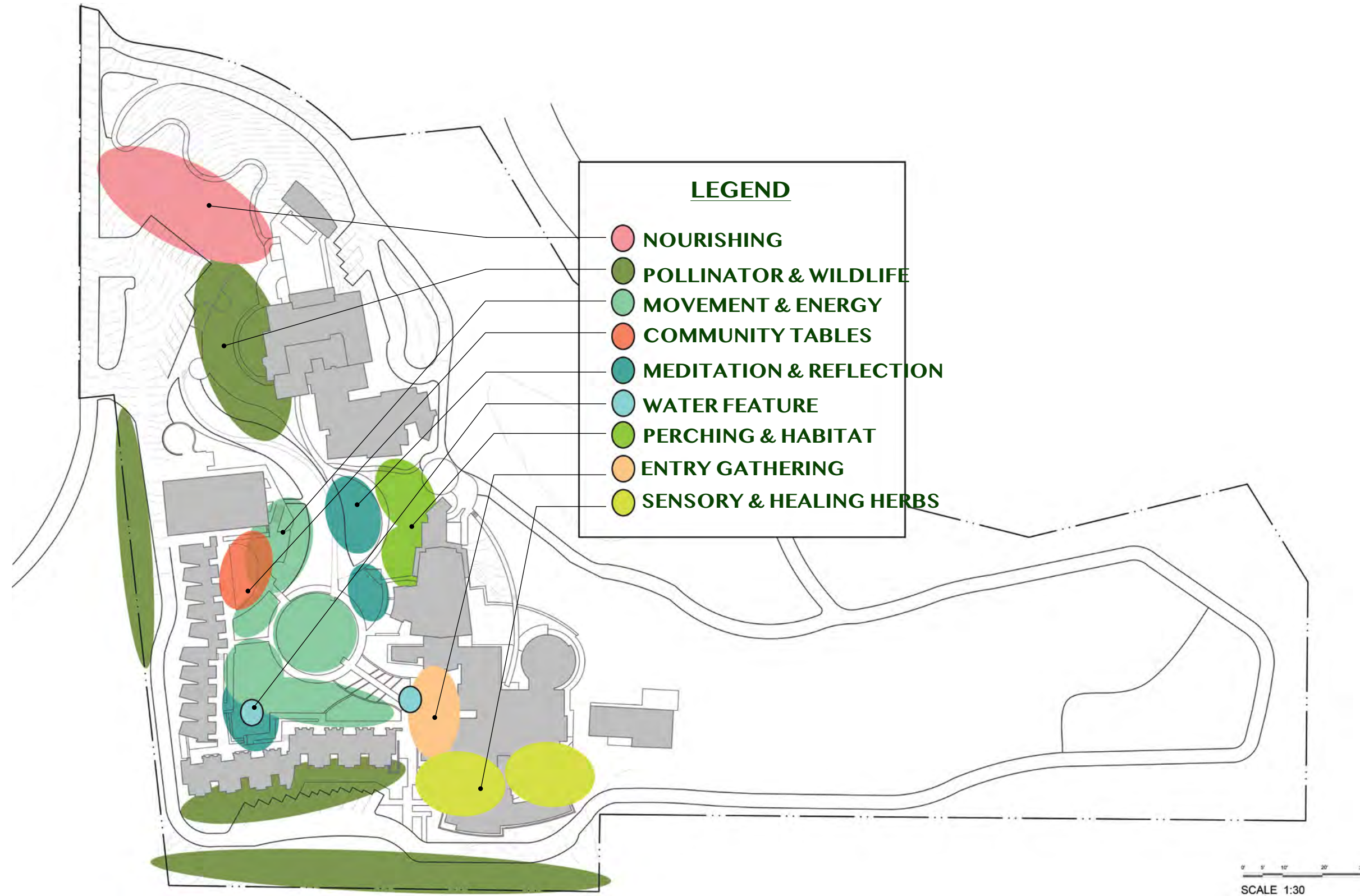


Women Empowerment

EMPOWERING WOMEN

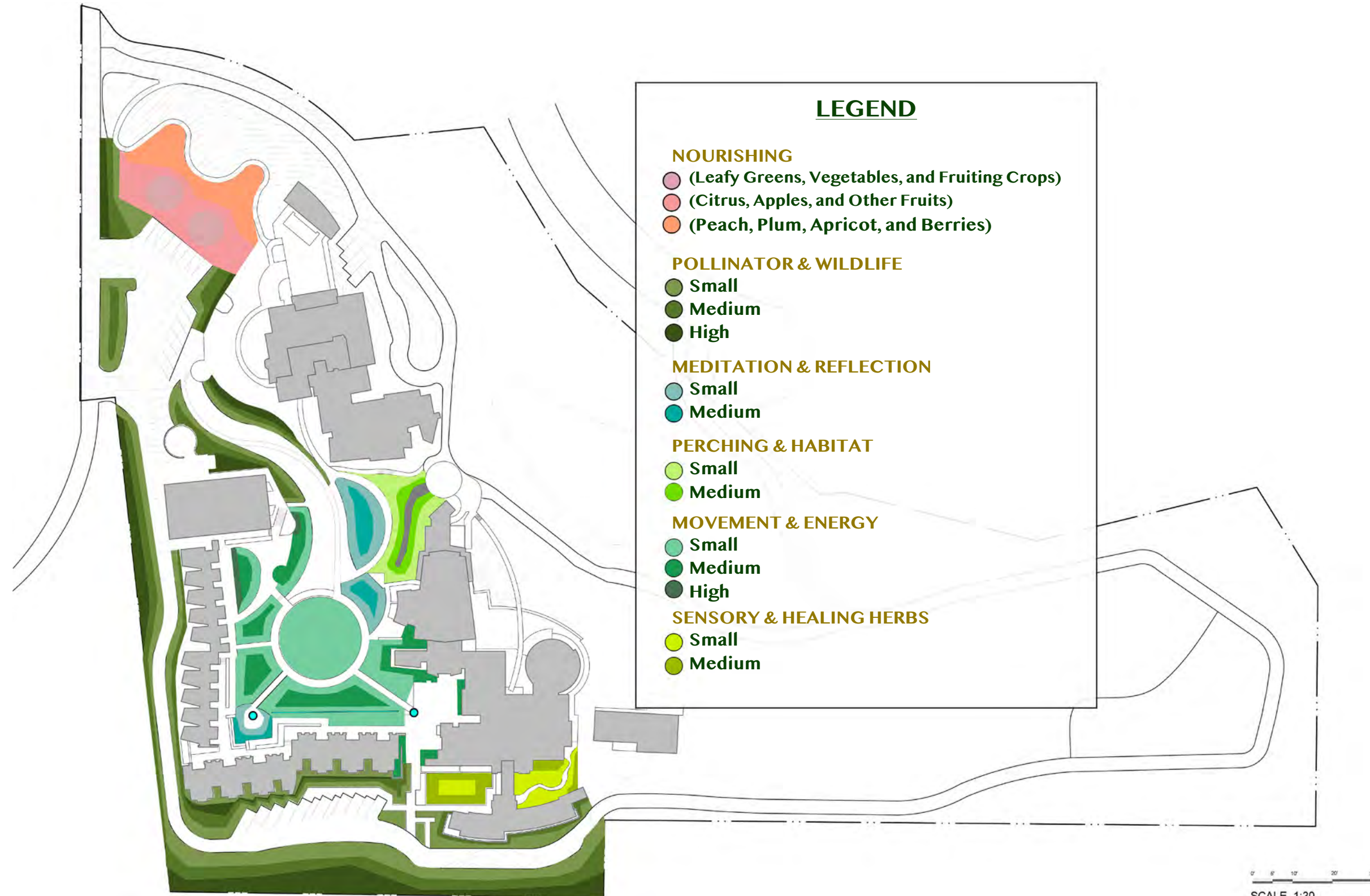
- Honor women's leadership by embedding stories and symbols of resilience in the land.
- Create spaces for mentorship, dialogue, and shared learning.
- Use design as storytelling in stone, soil, and plants to celebrate women's contributions past and present.

CONCEPTUAL DIAGRAM



PLANTING HIERARCHY

Organized by plant height, this diagram shows how small, medium, and tall species shape space, guide movement, and support habitat layers.

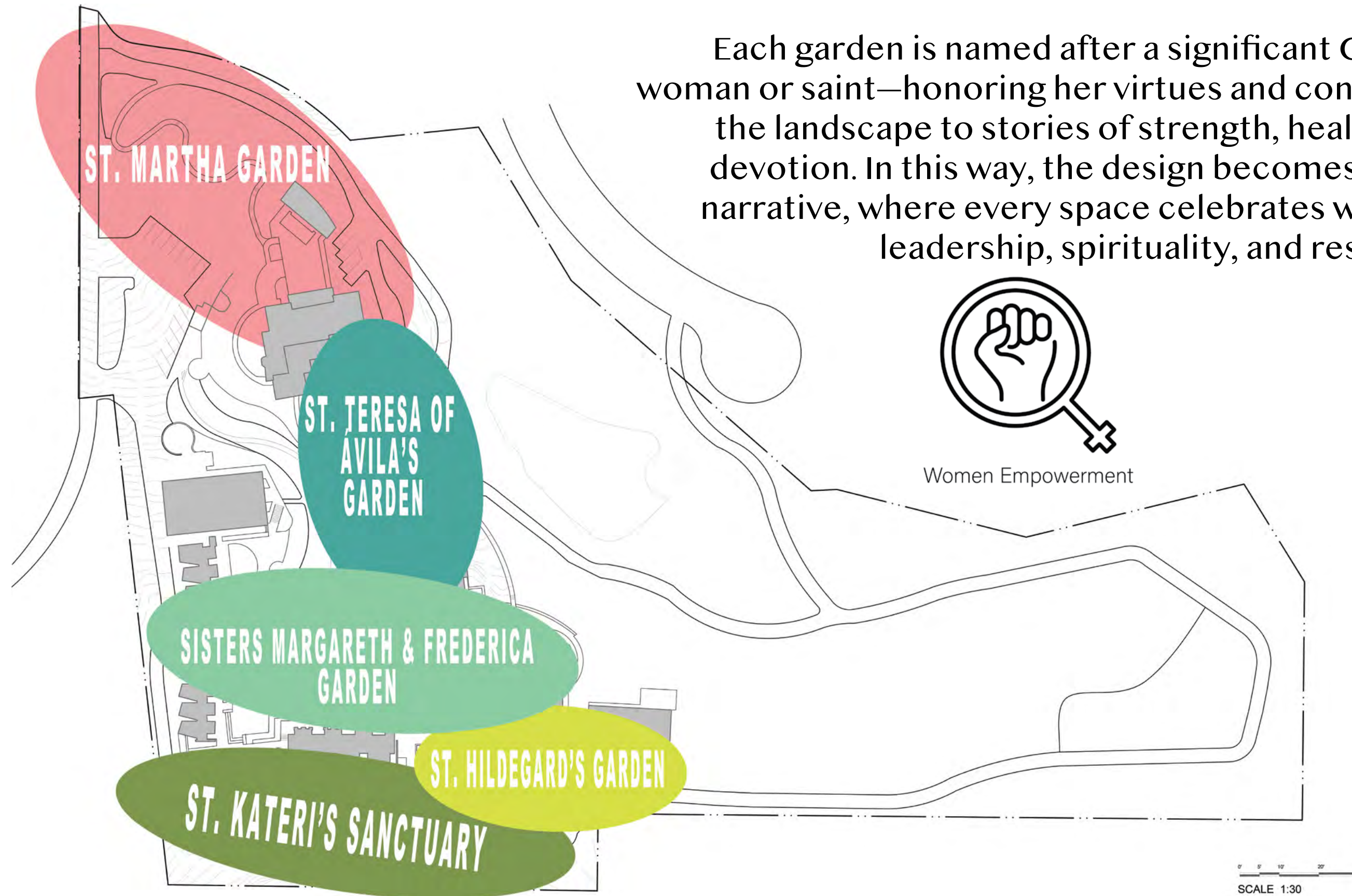


A-HA MOMENT

Each garden is named after a significant Catholic woman or saint—honoring her virtues and connecting the landscape to stories of strength, healing, and devotion. In this way, the design becomes a living narrative, where every space celebrates women’s leadership, spirituality, and resilience.



Women Empowerment



REVISION	DATE	BY

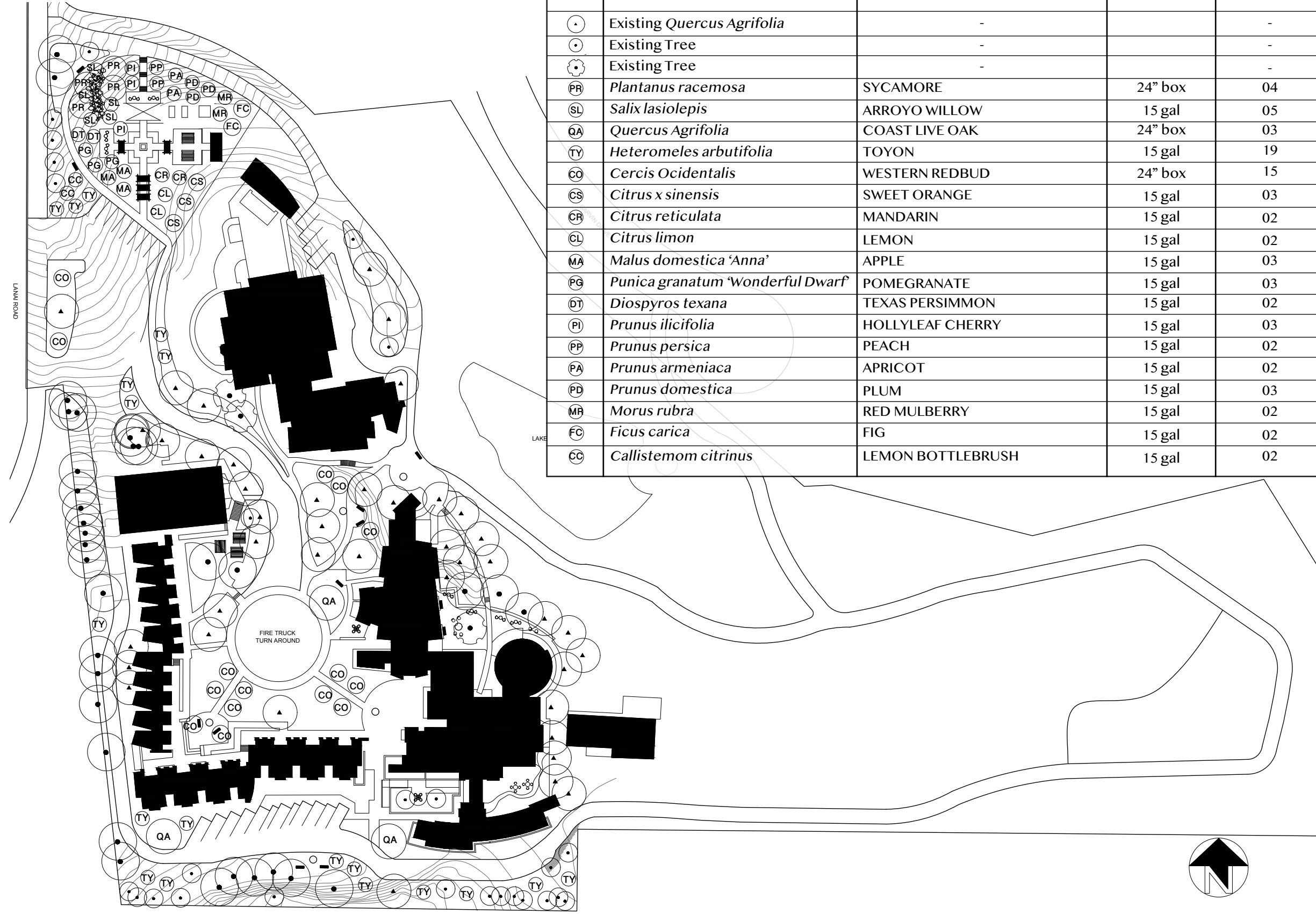
UCLA Extension
LANDSCAPE ARCHITECTURE
Los Angeles, CA

TREE PLANTING PLAN

SPEC. NO.
C.P. NO.
DATE: 05/11/2025
SCALE: N/A
DRAWN BY:
CHECKED BY:
SHEET NO.

L - 1
OF SHEETS

SYB	BOTANICAL NAME	COMMON NAME	CONTAINER	QUANTITY
⊙	Existing <i>Quercus Agrifolia</i>	-		-
⊙	Existing Tree	-		-
⊙	Existing Tree	-		-
PR	<i>Plantanus racemosa</i>	SYCAMORE	24" box	04
SL	<i>Salix lasiolepis</i>	ARROYO WILLOW	15 gal	05
QA	<i>Quercus Agrifolia</i>	COAST LIVE OAK	24" box	03
TY	<i>Heteromeles arbutifolia</i>	TOYON	15 gal	19
CO	<i>Cercis Occidentalis</i>	WESTERN REDBUD	24" box	15
CS	<i>Citrus x sinensis</i>	SWEET ORANGE	15 gal	03
CR	<i>Citrus reticulata</i>	MANDARIN	15 gal	02
CL	<i>Citrus limon</i>	LEMON	15 gal	02
MA	<i>Malus domestica 'Anna'</i>	APPLE	15 gal	03
PG	<i>Punica granatum 'Wonderful Dwarf'</i>	POMEGRANATE	15 gal	03
DT	<i>Diospyros texana</i>	TEXAS PERSIMMON	15 gal	02
PI	<i>Prunus ilicifolia</i>	HOLLYLEAF CHERRY	15 gal	03
PP	<i>Prunus persica</i>	PEACH	15 gal	02
PA	<i>Prunus armeniaca</i>	APRICOT	15 gal	02
PD	<i>Prunus domestica</i>	PLUM	15 gal	03
MR	<i>Morus rubra</i>	RED MULBERRY	15 gal	02
FC	<i>Ficus carica</i>	FIG	15 gal	02
CC	<i>Callistemom citrinus</i>	LEMON BOTTLEBRUSH	15 gal	02



REVISION	DATE	BY

UCLA Extension
LANDSCAPE ARCHITECTURE
Los Angeles, CA

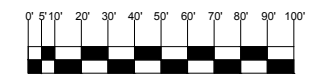
SHRUBS AND GROUND COVER
PLANTING PLAN

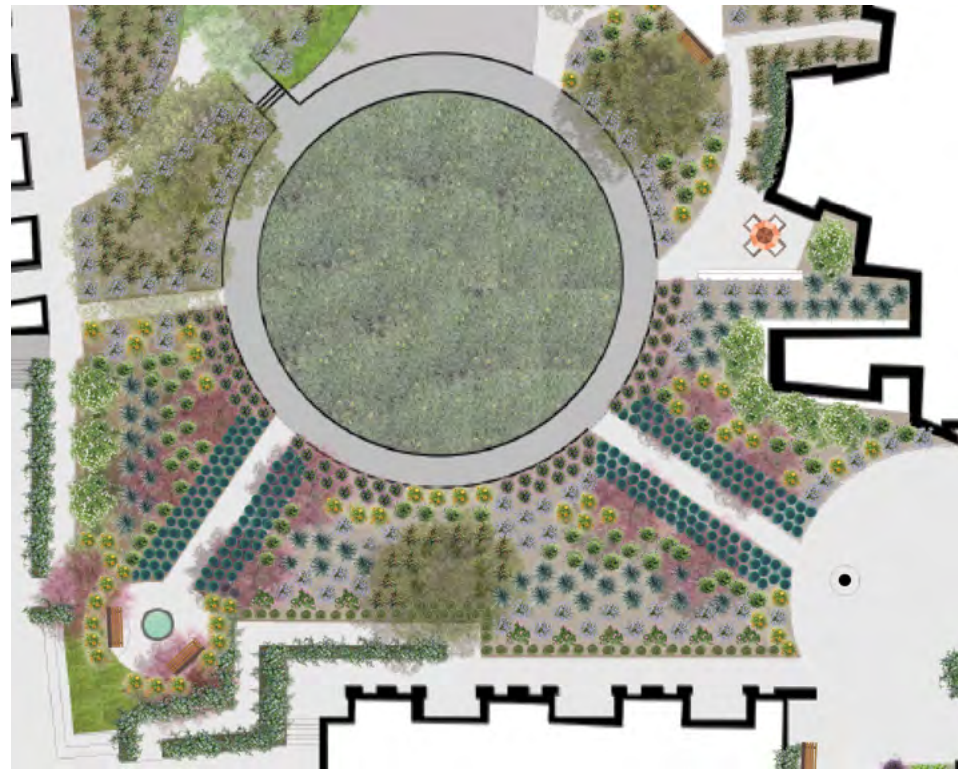
SPEC. NO.
C.P. NO.
DATE: 05/11/2025
SCALE: N/A
DRAWN BY:
CHECKED BY:
SHEET NO.

L - 1
OF SHEETS



SYB	BOTANICAL NAME	COMMON NAME	CONTAINER	QTY.
	<i>Monardella villosa</i>	COYOTE MINT	1 gal	146z
	<i>Pelargonium graveolens</i>	SCENTED GERANIUM	1 gal	151
	<i>Jasminum sambac</i>	ARABIAN JASMINE	5 gal	60
	<i>Encelia californica</i>	CALIFORNIA BRITTLBUSH	1 gal	50
	<i>Lavandula angustifolia</i>	ENGLISH LAVENDER	1 gal	65
	<i>Anigozanthos flavidus</i>	KANGAROO PAW	1 gal	52
	<i>Eriogonum grande var. rubescens</i>	RED BUCKWHEAT	1 gal	54
	<i>Oenothera berlandieri 'Siskiyou'</i>	PINK EVENING PRIMROSE	1 gal	15
	<i>Fragaria vesca</i>	WOODLAND STRAWBERRY	1 gal	46
	<i>Grevillea 'Moonlight'</i>	GREVILLEA	5 gal	13
	<i>Festuca californica</i>	CALIFORNIA FESCUE	1 gal	193
	<i>Salvia spathacea</i>	HUMMING BIRD SAGE	1 gal	85
	<i>Buddleja salviifolia</i>	SAGEWOOD	5 gal	03
	<i>Baccharis pilularis</i>	COYOTE BRUSH	1 gal	27
	<i>Bougainvillea glabra</i>	BOUGAINVILLEA	5 gal	02
	<i>Ceanothus 'Ray Hartman'</i>	CALIFORNIA LILAC	5 gal	10
	<i>Salvia leucophylla</i>	PURPLE SAGE	1 gal	21
	<i>Aloe barbadensis</i>	Aloe Vera	1 gal	39
	<i>Achillea millefolium</i>	YARROW	1 gal	26
	<i>Myrtus communis</i>	COMMON MYRTLE	5 gal	26
	<i>Artemisia californica</i>	CALIFORNIA SAGEBRUSH	5 gal	02
	<i>Oxalis oregana</i>	REDWOOD SORREL	1 gal	22
	<i>Heuchera 'Santa Ana Cardinal'</i>	CORAL BELLS	1 gal	28
	<i>Typha latifolia</i>	BROADLEAF CATTAIL	1 gal	10
	<i>Juncus patens</i>	CALIFORNIA GRAY RUSH	1 gal	18
	<i>Erigeron glaucus</i>	SEASIDE DAISY	1 gal	10
	<i>Passiflora edulis</i>	PASSIONFRUIT	5 gal	8
	<i>Vitis girdiana</i>	DESERT GRAPE	1 gal	8
	<i>Salvia rosmarinus</i>	ROSEMARY	1 gal	19
	<i>Solanum lycopersicum</i>	TOMATO	5 gal	03
	<i>Beta vulgaris</i>	BEET	4 inches	24
	<i>Zea mays</i>	CORN	SEED	08
	<i>Spinacia oleracea</i>	SPINACH	4 inches	24
	<i>Lactuca sativa</i>	LETTUCE	4 inches	24
	<i>Brassica oleracea var. acephala</i>	KALE	4 inches	24





This main garden is a tribute to Sisters Margaret Slachta and Frederica Horvath, founders of the Sisters of Social Service. Their legacy of compassion, action, and dedication to others inspires a space full of movement, energy, and purposeful connection with the land.

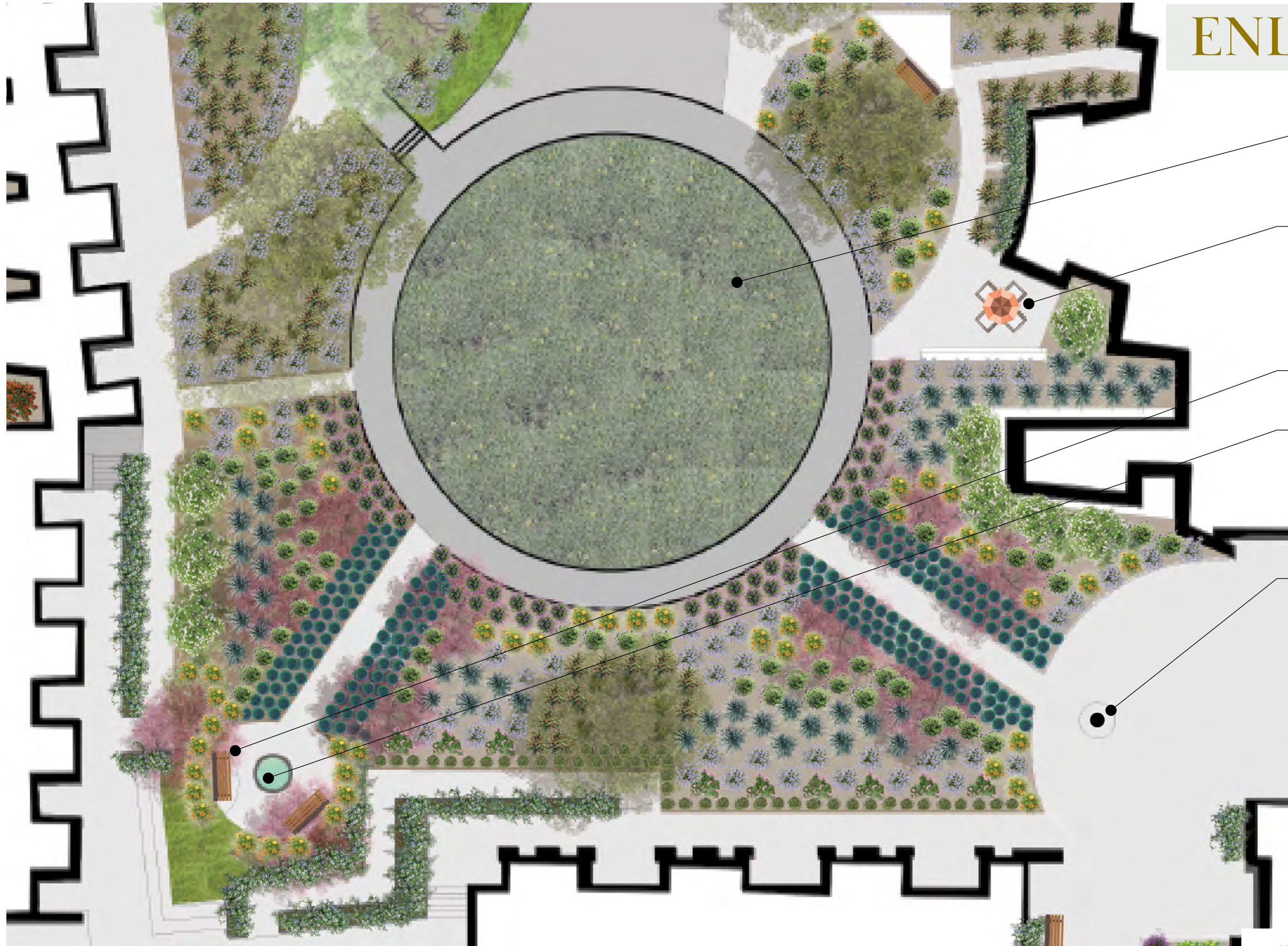


*Sister Margaret Slachta
Sister Frederica Horvath
Foundresses
Sisters of Social Service*

SISTERS MARGARET & FREDERICA GARDENS

MOVEMENT & ENERGY GARDEN

ENLARGEMENT 1



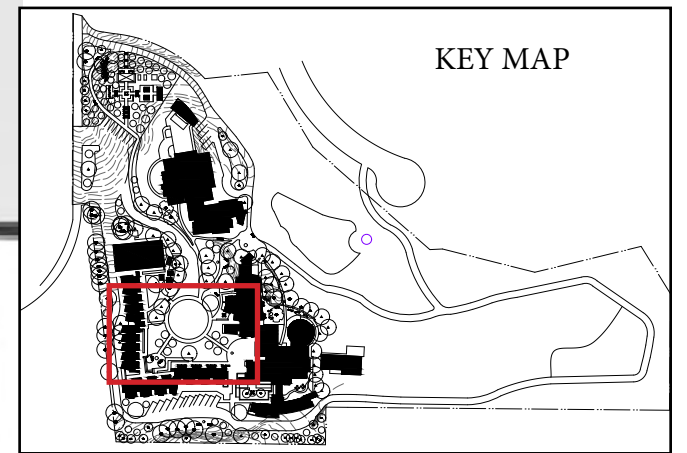
SILVER CARPET LAWN
(*Dymondia margaretae*)

SEATING AREA

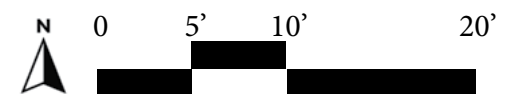
BENCH

WATER FEATURE

SISTERS MARGARET &
FREDERICA SCULPTURE

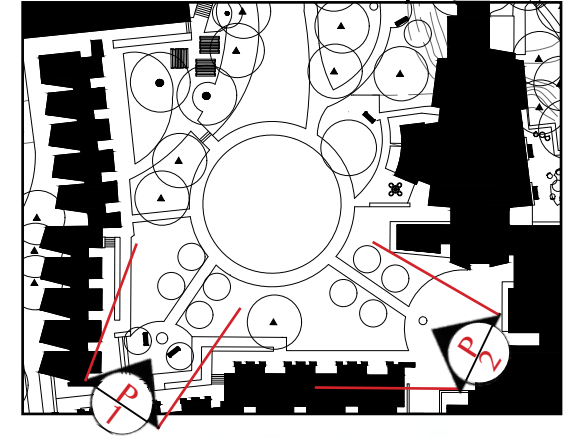


KEY MAP



PERSPECTIVES

KEY MAP

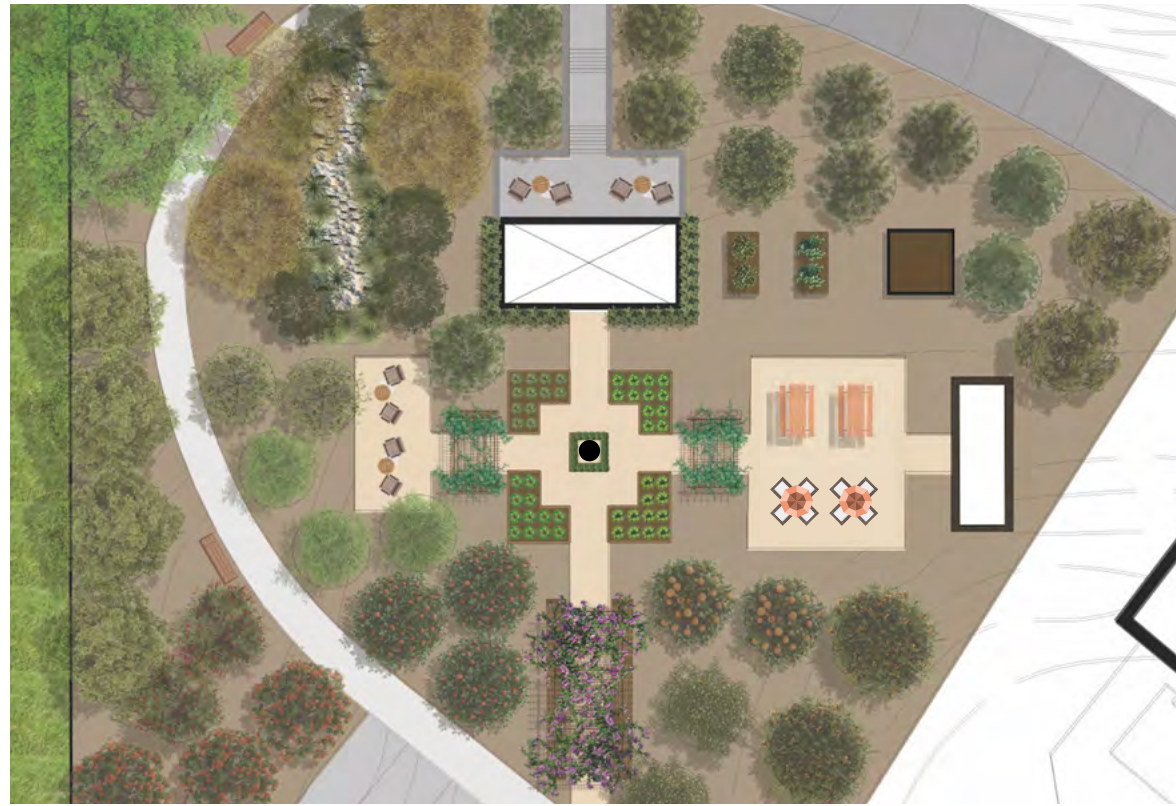


P
1



P
2

SISTERS MARGARET &
FREDERICA SCULPTURE



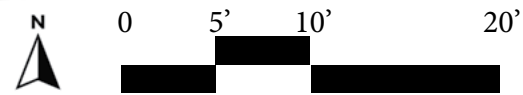
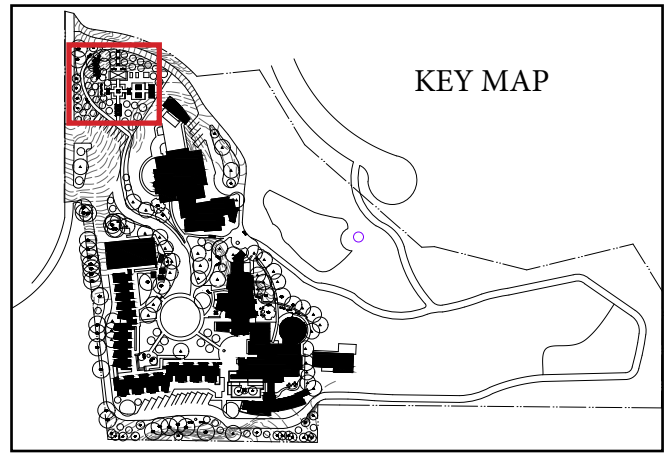
St. Martha is the patron saint of cooks, servants, and hospitality. She lovingly prepared meals for Jesus and is a symbol of nourishment and service. A perfect match for your edible garden that feeds both body and spirit.

ST. MARTHA GARDEN

NOURISHING GARDEN



- RAIN GARDEN
- ORCHID GREEN HOUSE
- SEATING AREA
- COMPOST
- PERGOLA
- ST. MARTHA SCULPTURE
- PICNIC AREA
- BATHROOMS AND MAINTENANCE ROOM
- BENCH
- PERGOLA



ENLARGEMENT 2

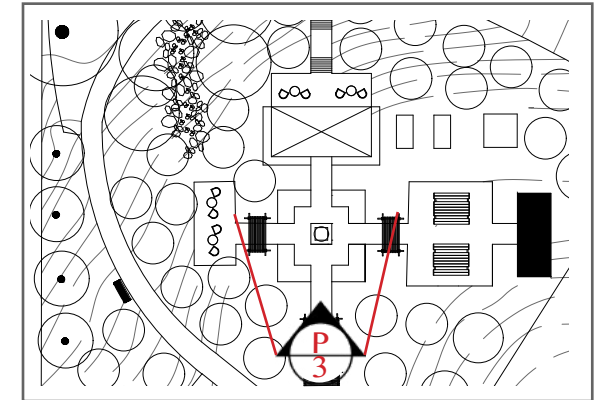


SECTION ELEVATION

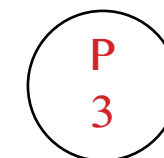
PERSPECTIVE



KEY MAP



ST. MARTHA SCULPTURE





St. Teresa of Ávila is known for her deep spirituality, contemplative life, and connection to meditation and inner peace. Her mystical writings still inspire seekers today—ideal for a tranquil space dedicated to prayer and reflection.



ST. TERESA OF ÁVILA GARDEN

MEDITATION & REFLECTION GARDEN





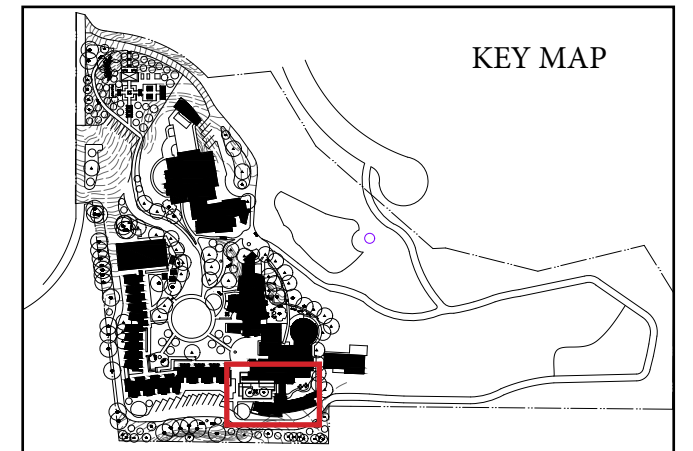
St. Hildegard of Bingen was a healer, herbalist, composer, and visionary. She worked with medicinal plants and saw nature as a sacred, healing force—perfect for a garden focused on aromatherapy, herbal healing, and sensory experiences.



ST. HILDEGARD GARDEN

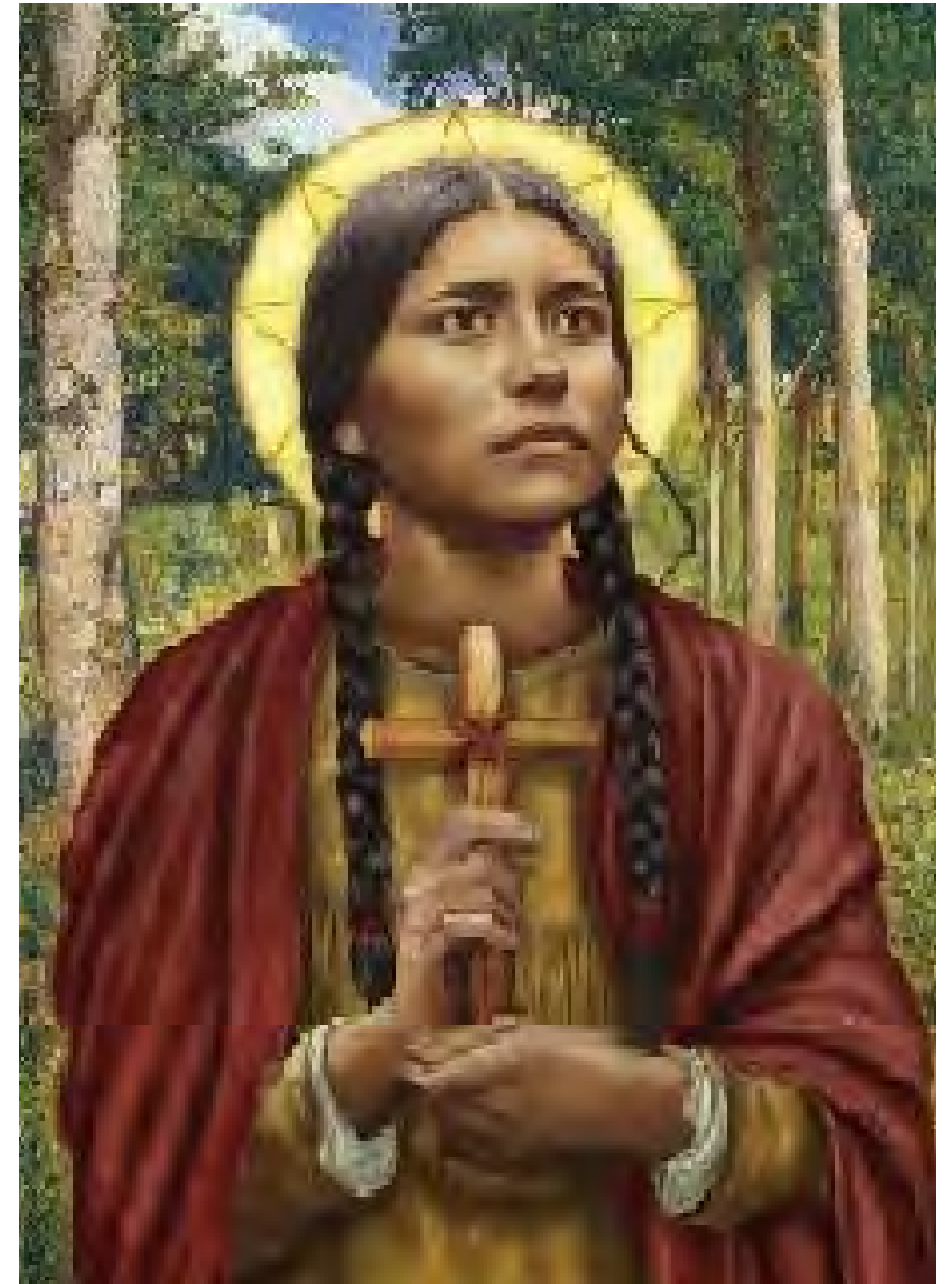
THE HEALING GARDEN

ENLARGEMENT 4





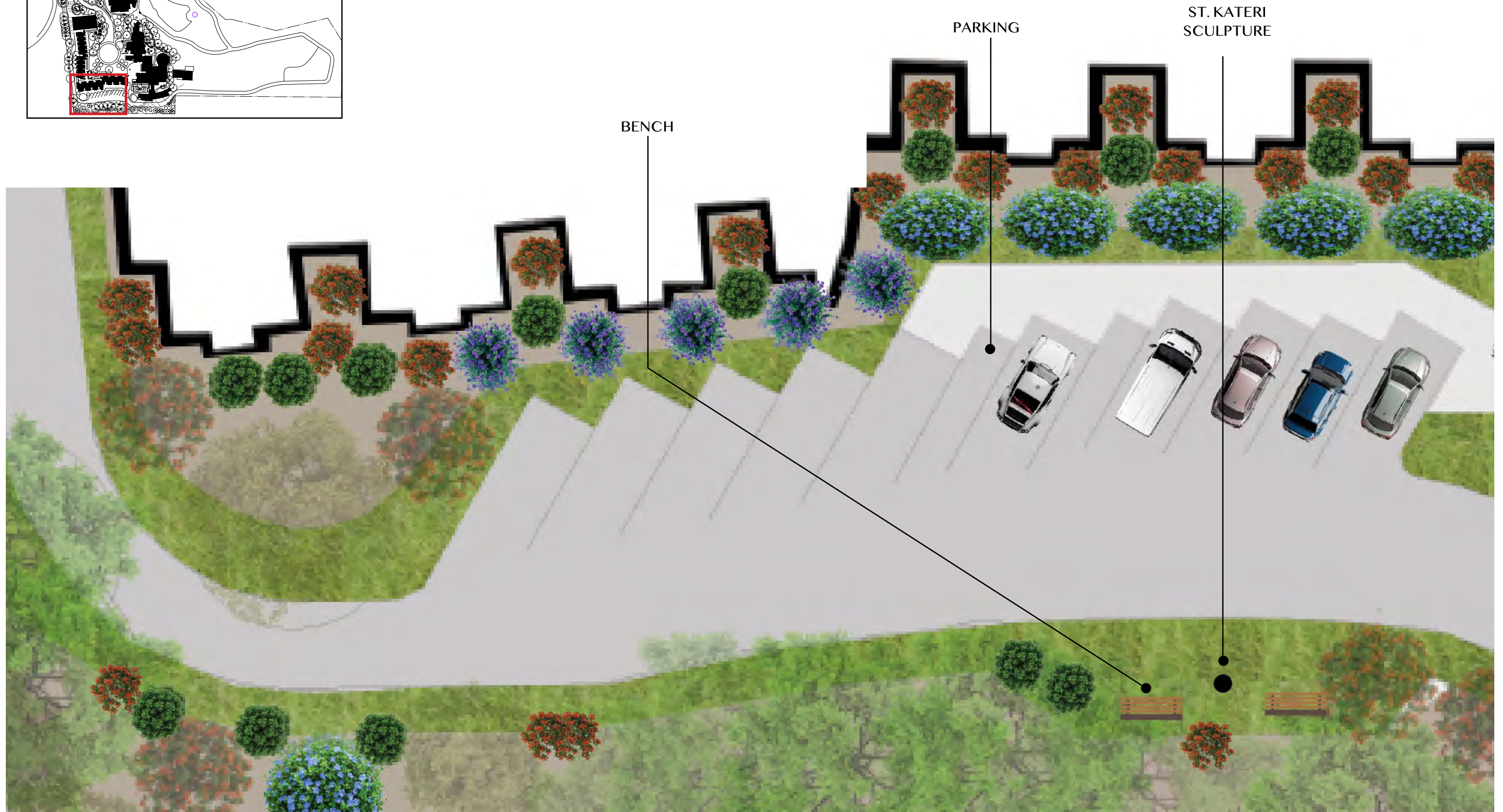
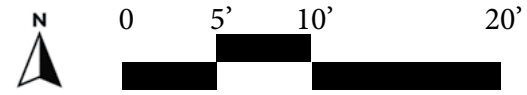
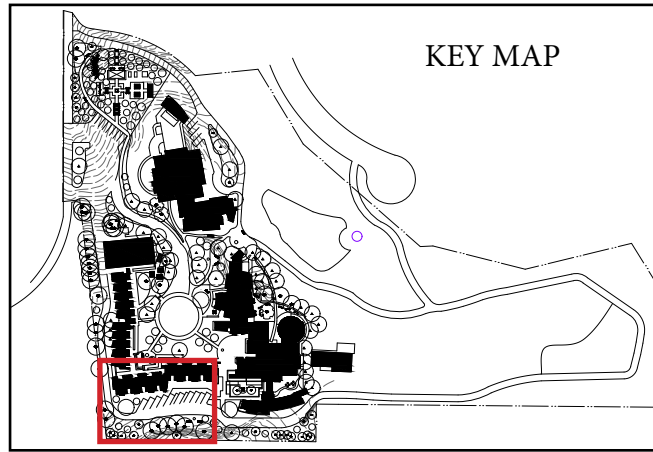
St. Kateri Tekakwitha, the first Native American saint, had a deep bond with nature. Known as the “Lily of the Mohawks,” she represents ecological harmony and reverence for creation—making her a beautiful guardian of your biodiversity garden.



ST. KATERI SANCTUARY

POLLINATORS & WILD LIFE SANCTUARY

ENLARGEMENT 5



“Completing this project is more than an academic milestone—it’s the flowering of a journey rooted in purpose, creativity, and heart. In honoring the legacy of the Sisters of Social Service—extraordinary women who make a difference in the world—I’ve not only shaped a landscape, I’ve grown within it. This is where vision met soul, and where design became devotion.”

Patrese Winter

THANK YOU!

CREDITS

UCLA Extension Landscape Architecture Program

PROJECT BY

Patrese Winter

COURSE

Landscape Design 5: Planting Design
ARCH-X 472.8

INSTRUCTOR

Pamela Brief

SPECIAL THANKS

Tom Rau
Betsy Hunter
Pando Populus
The Sisters of Social Service
Holy Spirit Retreat Center Staff

APPENDIX

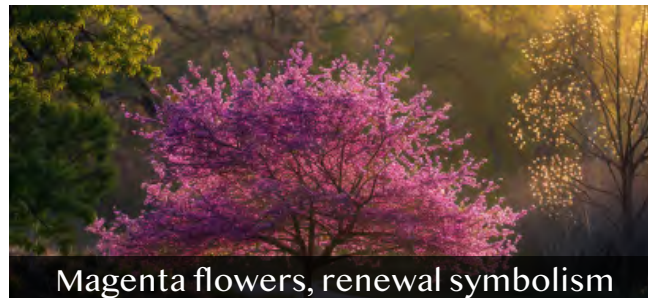
MEDITATION & REFLECTION GROVE

COAST LIVE OAK – CA NATIVE
Quercus agrifolia



Sacred tree, shade, biodiversity

WESTERN REDBUD – CA NATIVE
Cercis occidentalis



Magenta flowers, renewal symbolism

ARABIAN JASMINE – MEDITERRANEAN/
Jasminum sambac



Deeply fragrant, spiritual symbolism

COYOTE MINT – CA NATIVE
Monardella villosa



Cooling scent, medicinal

CALIFORNIA BAY LAUREL – CA NATIVE
Umbellularia californica



Aromatic, medicinal

CALIFORNIA BRITTLEBUSH – CA Native
Encelia californica



Golden light for quiet reflection.

ENGLISH LAVENDER – MEDITERRANEAN
Lavandula angustifolia



Calming, aids meditation

SCENTED GERANIUM – SOUTH AFRICA
Pelargonium graveolens



Uplifting, soothing scent

MOVEMENT & ENERGY GARDEN

DEER GRASS – CA NATIVE
Muhlenbergia rigens



Elegant plumes, soft rustling sound

CALIFORNIA FESCUE – CA NATIVE
Festuca californica



Drought-tolerant bunchgrass, soft texture, thrives in partial sun to shade.

WOODLAND STRAWBERRY – CA NATIVE
Fragaria vesca



Lush, calming presence

RED BUCKWHEAT – CA Native
Eriogonum grande var. rubescens



Pink flowers, pollinator-friendly

PINK EVENING PRIMROSE – CA NATIVE
Oenothera berlandieri 'Siskiyou'

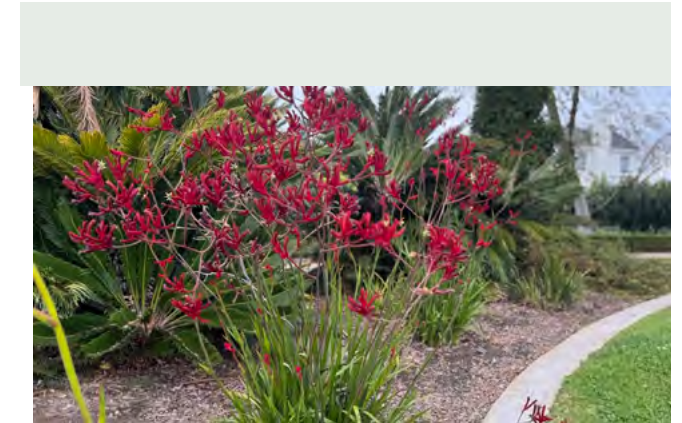


Evening blooms, gentle groundcover

SILVER CARPET – SOUTH AFRICA
Dymondia margaretae



Walkable, resilient, soft underfoot



Vibrant, uplifting colors

GREVILLEA – AUSTRALIA
Grevillea 'Moonlight'



Evergreen, soft aesthetic, attracts birds

SENSORY & HEALING HERB GARDEN

CALIFORNIA SAGEBRUSH – CA NATIVE
Artemisia californica



Used in smudging, spiritual cleansing

PURPLE SAGE – CA NATIVE
Salvia leucophylla



Traditional herbal medicine

CALIFORNIA WILD ROSE – CA NATIVE
Rosa californica



Fragrant, medicinal uses

Aloe Vera – Africa
Aloe barbadensis



Soothing, healing, sacred plant

FRAGRANT PITCHER SAGE – CA NATIVE
Lepechinia fragrans



Traditional herbal medicine

YARROW – CA NATIVE
Achillea millefolium



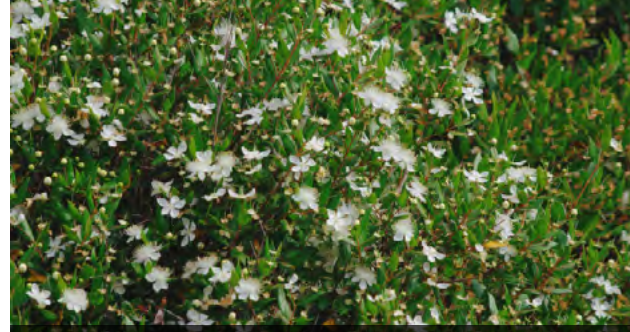
Healing herb, protective symbolism

CREeping THYME – MEDITERRANEAN
Thymus serpyllum



Walkable, antibacterial, calming scent

COMMON MYRTLE – MEDITERRANEAN
Myrtus communis



Symbol of peace, aromatic, herbal uses

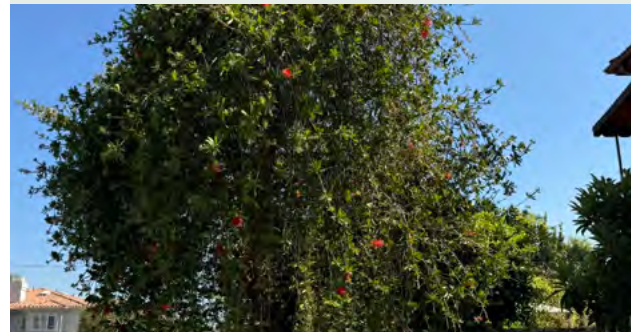
POLLINATOR & WILDLIFE SANCTUARY

HUMMINGBIRD SAGE – CA NATIVE
Salvia spathacea



Hardy, supports local wildlife

LEMON BOTTLEBRUSH – AUSTRALIA
Callistemon citrinus



Vibrant flowers, attracts hummingbirds



Soft underfoot, good for habitat creation

SANTA BARBARA DAISY – South America
Erigeron karvinskianus



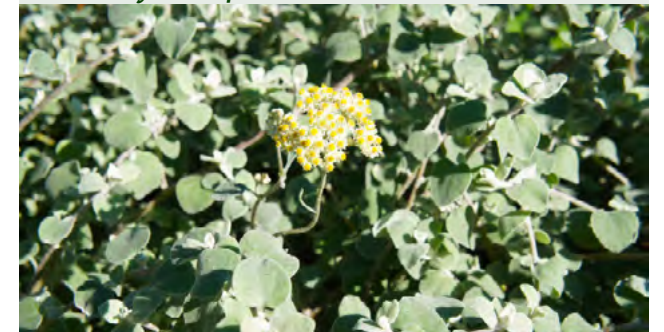
Delicate flowers, long bloom season

COYOTE BRUSH – CA NATIVE
Baccharis pilularis



Hardy, supports local wildlife

LICORICE PLANT – SOUTH AFRICA
Helichrysum petiolare



Velvety leaves, calming scent

CALIFORNIA LILAC – CA NATIVE
Ceanothus 'Ray Hartman'



Blue flowers, vital for bees

SAGEWOOD – SOUTH AFRICA
Buddleja salviifolia



Fragrant, attracts butterflies

Meditation & Reflection Grove

(Quiet, Contemplative, & Fragrant)

A peaceful area with shade, fragrance, and soothing textures,
designed for deep thought, seated meditation, and silent contemplation.

Scientific Name	Plant Family	Common Name	Mature Height & Spread	WUCOLS Plant Factor (Zone 3)	Soil Requirements	Summer Water Reduction	Bloom Color & Season	Maintenance Requirements
<i>Quercus agrifolia</i>	Fagaceae	Coast Live Oak	40-70' H, 30-60' W	L	Well-drained, adaptable	Deep watering young trees, drought-tolerant when mature	Yellow-green, Spring	Prune for shape as needed, deep watering for young trees, minimal maintenance once established.
<i>Cercis occidentalis</i>	Fabaceae	Western Redbud	10-20' H, 10-15' W	L	Well-drained, adaptable	Minimal, deep water during first year	Pink-purple, Spring	Light pruning after flowering to maintain shape, drought-tolerant once established.
<i>Umbellularia californica</i>	Lauraceae	California Bay Laurel	30-60' H, 30-50' W	L	Well-drained, loamy	Reduce summer watering once established	Yellow-green, Spring	Trim for size control if used as a hedge, remove suckers to maintain form.
<i>Encelia californica</i>	Asteraceae	California Brittlebush	3-5 ft tall & wide	L	Well-drained	Reduce summer watering once established	Yellow, spring to summer	Low – occasional pruning.
<i>Jasminum sambac</i>	Oleaceae	Arabian Jasmine	6-10' H, 5-8' W	M	Well-drained, rich	Moderate, benefits from deep occasional watering	White, Summer-Fall	Deadhead spent flowers regularly to encourage blooming, occasional trimming for shape.
<i>Lavandula angustifolia</i>	Lamiaceae	English Lavender	2-3' H, 2-4' W	L	Well-drained, sandy	Minimal, deep soak every few weeks	Purple, Spring-Summer	Trim after flowering to encourage new growth, remove woody stems annually.
<i>Monardella villosa</i>	Lamiaceae	Coyote Mint	1-2' H, 2-3' W	L	Well-drained	Reduce watering in summer to prevent root rot	Pink-purple, Spring-Summer	Pinch to maintain compact growth, cut back in late winter to rejuvenate.
<i>Pelargonium graveolens</i>	Geraniaceae	Scented Geranium	2-4' H, 3-4' W	L	Well-drained, adaptable	Drought-tolerant, reduce watering in summer	Pink-purple, Spring-Summer	Pinch to encourage bushy growth, prune after flowering, remove dead stems.

Movement & Energy Garden

(Yoga, Tai Chi, & Flow)

An open, inviting space designed for fluid movement, balance, and mindfulness, inspired by nature's graceful motion.

Scientific Name	Plant Family	Common Name	Mature Height & Spread	WUCOLS Plant Factor (Zone 3)	Soil Requirements	Summer Water Reduction	Bloom Color & Season	Maintenance Requirements
<i>Muhlenbergia rigens</i>	Poaceae	Deer Grass	3-5' H, 3-5' W	L	Well-drained, sandy	Deep soak in summer, tolerates dry conditions	Tan, Fall-Winter	Cut back in winter for rejuvenation, tolerates mowing for size control.
<i>Chondropetalum tectorum</i>	Restionaceae	Cape Rush	3-5' H, 3-5' W	L	Well-drained	Reduce watering, thrives in dry conditions	Brown, Spring-Summer	Divide clumps every few years to maintain vigor, remove old growth annually.
<i>Oenothera berlandieri</i> 'Siskiyou'	Onagraceae	Pink Evening Primrose	1-2' H, 1-3' W	L	Well-drained, adaptable	Drought-tolerant once established, deep soak occasionally	Pink, Spring-Summer	Deadhead to prolong blooming, tolerates reseeding, occasional thinning required.
<i>Dymondia margaretae</i>	Asteraceae	Silver Carpet	1-2' H, 2-3' W	L	Well-drained, sandy	Minimal, only water in prolonged drought	Yellow, Spring-Summer	Low maintenance, occasional trimming to maintain density, remove weeds.
<i>Fragaria vesca</i>	Rosaceae	Woodland Strawberry	6-12" H, spreads	M	Moist, well-drained	Water occasionally in summer for fruit production	White-pink, Spring-Summer	Harvest berries in late summer, prune runners to control spread, mulch for moisture retention.
<i>Anigozanthos flavidus</i>	Haemodora-ceae	Kangaroo Paw	3-5' H, 2-3' W	L	Well-drained	Water deeply but infrequently	Red-orange, Spring-Summer	Remove spent flowers regularly for continuous bloom, cut back in winter.
<i>Grevillea</i> 'Moonlight'	Proteaceae	Grevillea 'Moonlight'	10-15' H, 8-12' W	L	Well-drained	Reduce watering in summer, tolerates dry spells	White, Spring-Summer	Minimal pruning required, remove dead wood as needed, occasional shaping.
<i>Eriogonum grande</i> var. <i>rubescens</i>	Polygonaceae	Red Buckwheat	1-2' H, 2-3' W	L	Well-drained	Minimal, occasional deep watering	Pink-red, Spring-Summer	Deadhead spent flowers to encourage more blooms, occasional shaping required.

Sensory & Healing Herb Garden

(Touch, Smell, & Spiritual Healing)

A garden for herbal healing, aromatherapy, and tactile interaction, designed for hands-on engagement and mindfulness.

Scientific Name	Plant	Common Name	Mature Height & Spread	WUCOLS Plant Factor (Zone 3)	Soil Requirements	Summer Water Reduction	Bloom Color & Season	Maintenance Requirements
<i>Salvia leucophylla</i>	Lamiaceae	Purple Sage	3-5' H, 3-5' W	L	Well-drained	Drought-tolerant, occasional deep watering	Purple, Spring-Summer	Prune lightly after flowering to maintain shape, drought-tolerant.
<i>Artemisia californica</i>	Asteraceae	California Sagebrush	2-5' H, 3-5' W	L	Well-drained, sandy	Drought-tolerant, reduce watering in summer	Yellow, Spring-Summer	Trim back in winter to refresh foliage, minimal maintenance otherwise.
<i>Lepechinia fragrans</i>	Lamiaceae	Fragrant Pitcher Sage	3-5' H, 3-4' W	L	Well-drained	Minimal summer watering, deep soak	Purple-pink, Spring-Summer	Cut back in late winter to promote new growth, occasional thinning.
<i>Achillea millefolium</i>	Asteraceae	Yarrow	1-3' H, 2-3' W	L	Well-drained	Deep soak in summer, tolerates drought	White-yellow, Spring-Summer	Deadhead to encourage more blooms, cut back in fall to refresh foliage.
<i>Rosa californica</i>	Rosaceae	California Wild Rose	3-6' H, 3-6' W	M	Moist, well-drained	Water in summer for more blooms, tolerates dry spells	Pink, Spring-Summer	Prune after flowering, remove suckers to control spread, cut back old wood
<i>Thymus serpyllum</i>	Lamiaceae	Creeping Thyme	1-3' H, spreading	L	Well-drained	Reduce watering in summer, occasional soak	Pink-purple, Spring-Summer	Shear lightly to maintain shape, remove old stems yearly, tolerates foot traffic.
<i>Aloe barbadensis</i>	Asphodelaceae	Aloe Vera	1-3' H, 2-3' W	VL	Well-drained, sandy	Water occasionally, more during extreme heat	Yellow-orange, Spring-Summer	Remove dead leaves as needed, water deeply in summer to prevent stress.
<i>Myrtus communis</i>	Myrtaceae	Common Myrtle	8-12' H, 6-8' W	L	Well-drained	Minimal, occasional deep watering	White, Spring-Summer	Prune lightly for shape, remove old stems annually, can be trained into a hedge.

Pollinator & Wildlife Sanctuary

(Restoring Biodiversity & Supporting Native Species)

A space to support pollinators, birds, and beneficial insects,
creating a vibrant and thriving habitat.

Scientific Name	Plant Family	Common Name	Mature Height & Spread	WUCOLS Plant Factor (Zone 3)	Soil Requirements	Summer Water Reduction	Bloom Color & Season	Maintenance Requirements
<i>Salvia spathacea</i>	Lamiaceae	Hummingbird Sage	2-4' H, 3-5' W	L	Well-drained	Deep soak in summer to encourage flowering	Red, Spring-Summer	Cut back in winter to encourage stronger spring growth, remove old flower stalks.
<i>Baccharis pilularis</i>	Asteraceae	Coyote Brush	3-6' H, 4-6' W	L	Well-drained	Drought-tolerant, occasional watering	White-green, Fall-Winter	Trim lightly after flowering, tolerates harsh conditions, remove old stems.
<i>Callistemon citrinus</i>	Myrtaceae	Lemon Bottlebrush	8-15' H, 8-12' W	M	Well-drained	Reduce watering in summer, thrives in dry conditions	Red, Spring-Summer	Prune lightly for shape, remove spent flowers, can tolerate hard pruning.
<i>Helichrysum petiolare</i>	Asteraceae	Licorice Plant	2-3' H, 3-4' W	L	Well-drained, sandy	Minimal summer watering, drought-tolerant	Yellow, Spring-Summer	Pinch or trim to maintain compact growth, remove dead stems in spring.
<i>Carex pansa</i>	Cyperaceae	California Meadow Sedge	1-2' H, spreading	L	Well-drained, moist	Reduce watering once established	Green-yellow, Spring-Summer	Cut back old growth in early spring, divide every few years to maintain health.
<i>Erigeron karvinskianus</i>	Asteraceae	Santa Barbara Daisy	1-2' H, 2-3' W	L	Well-drained	Water occasionally in hot weather	White-pink, Spring-Summer	Deadhead regularly to promote longer flowering, cut back in late winter.
<i>Ceanothus 'Ray Hartman'</i>	Rhamnaceae	California Lilac	8-15' H, 8-12' W	L	Well-drained	Minimal summer watering, thrives in dry conditions	Blue-purple, Spring-Summer	Prune lightly after flowering to maintain shape, remove old stems as needed.
<i>Buddleja salviifolia</i>	Scrophulariaceae	Sagewood	6-12' H, 6-10' W	L	Well-drained	Deep soak occasionally in extreme heat	Purple, Spring-Summer	Cut back to shape in early spring, occasional pruning needed to maintain size.

ORCHARD & ESPALIER FRUIT GROVE

SWEET ORANGE – MEDITERRANEAN, CA
Citrus x sinensis



Standard/Dwarf, ripens Winter-Spring, no chill hours

MANDARIN – MEDITERRANEAN, CA
Citrus reticulata



Dwarf/Espalier, ripens Fall-Winter, no chill hours



Standard/Dwarf, ripens Fall, wild-life-friendly

TEXAS PERSIMMON – CA/MEXICO ADAPT-
Diospyros texana



Standard, ripens Fall-Winter, drought-tolerant

LEMON – MEDITERRANEAN, CA ADAPTED
Citrus limon



Standard/Espalier, ripens Winter-Spring, no chill hours

APPLE – Mediterranean, CA Adapted
Malus domestica ‘Anna’



Dwarf/Espalier, needs cross-pollination, 250 chill hours, ripens Late Summer

FIG – MEDITERRANEAN, CA ADAPTED
Ficus carica



Standard/Dwarf, ripens Summer-Fall, 100 chill hours

POMEGRANATE – MEDITERRANEAN, CA
Punica granatum ‘Wonderful Dwarf’



Standard/Espalier, ripens Fall, 150 chill hours

STONE FRUIT & BERRY PATCH

PEACH – MEDITERRANEAN, CA ADAPT-
Prunus persica



Standard/Espalier, 250 chill hours, ripens Late Spring-Summer

APRICOT – MEDITERRANEAN, CA
Prunus armeniaca



Standard/Espalier, 300 chill hours, ripens Early Summer

DESERT GRAPE – CA NATIVE
Vitis girdiana



Vining, ripens Late Summer-Fall, drought-resistant

GOLDEN CURRANT – CA Native
Ribes aureum



Shrub, ripens Late Spring-Summer, drought-tolerant

PLUM – MEDITERRANEAN, CA ADAPTED
Prunus domestica



Standard, 300 chill hours, ripens Summer

RED MULBERRY – CA Native
Morus rubra



Standard, ripens Spring-Summer, wildlife-friendly



Native, sacred in indigenous cultures, supports biodiversity

PASSIONFRUIT – SOUTH AMERICA, CA
Passiflora edulis

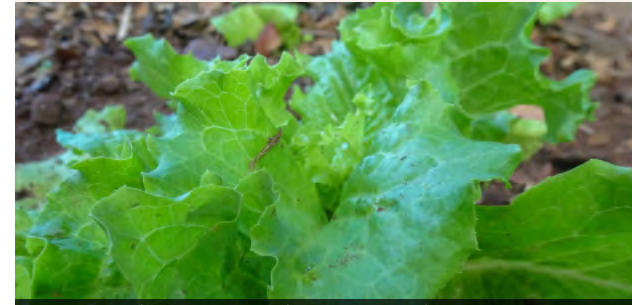


Vining, ripens Summer-Fall, 100 chill hours

VEGETABLE & HERB KITCHEN GARDEN

LETTUCE - MEDITERRANEAN, CA ADAPT-

Lactuca sativa



Partial Sun, cool-season, harvest year-round

KALE - MEDITERRANEAN, CA ADAPTED

Brassica oleracea var. acephala



Partial Sun, cool-season, harvest year-round

SPINACH - MEDITERRANEAN, CA ADAPT-

Spinacia oleracea



Partial Sun-Shade, cool-season, thrives in shade, harvest year-round

BEEF - MEDITERRANEAN, CA ADAPTED

Beta vulgaris



Partial Sun, root crop, harvest Spring-Summer



Full Sun, annual, ripens Summer

TOMATO - SOUTH AMERICA, CA ADAPT-

Solanum lycopersicum



Full Sun, annual, ripens Summer

ZUCCHINI - SOUTH AMERICA, CA

Cucurbita pepo



Full Sun, vining, ripens Summer

CORN - INDIGENOUS AMERICAS, CA

Zea mays



Full Sun, tall annual, ripens Summer

Orchard & Espalier Fruit Grove

(Citrus, Apples, and Other Fruits)

A productive orchard featuring espaliered fruit trees, dwarf and standard varieties, all selected for low chill requirements and high yield in Encino’s climate.

Scientific Name	Family Name	Common Name	Tree Form/Type	Chill Hours	Ripening Time	Sun Requirement	Maintenance Requirements
<i>Citrus x sinensis</i>	Rutaceae	Sweet Orange	Standard/Dwarf	None	Winter-Spring	Full Sun	Prune for airflow, fertilize seasonally, protect from frost.
<i>Citrus limon</i>	Rutaceae	Lemon	Standard/Espalier	None	Winter-Spring	Full Sun	Regular watering, prune dead wood, protect from pests.
<i>Citrus reticulata</i>	Rutaceae	Mandarin	Dwarf/Espalier	None	Fall-Winter	Full Sun	Thin fruit for better production, prune lightly.
<i>Malus domestica</i> ‘Anna’	Rosaceae	Anna Apple	Dwarf/Espalier	250 hours	Late Summer	Full Sun	Prune annually for shape, requires cross-pollination.
<i>Prunus ilicifolia</i>	Rosaceae	Hollyleaf Cherry	Standard/Dwarf	None	Fall	Full Sun	Minimal pruning, tolerates drought, attracts wildlife.
<i>Ficus carica</i>	Moraceae	Fig	Standard/Dwarf	100 hours	Summer-Fall	Full Sun	Prune for structure, protect from frost, tolerates drought.
<i>Punica granatum</i>	Lythraceae	Pomegranate	Standard/Espalier	150 hours	Fall	Full Sun	Prune suckers, can be grown as a shrub or tree.
<i>Diospyros texana</i>	Ebenaceae	Texas Persimmon	Standard	200 hours	Fall-Winter	Full Sun	Minimal pruning, drought-tolerant, slow-growing.

Stone Fruit & Berry Patch

(Peach, Plum, Apricot, and Berries)

A high-yielding grove filled with nutrient-rich stone fruits and berries, offering seasonal diversity and wildlife habitat support.

Scientific Name	Family Name	Common Name	Tree Form/Type	Chill Hours	Ripening Time	Sun Requirement	Maintenance Requirements
<i>Prunus persica</i>	Rosaceae	Peach	Standard/Espalier	250 hours	Late Spring-Summer	Full Sun	Prune for airflow, fertilize in spring, requires thinning.
<i>Prunus domestica</i>	Rosaceae	Plum	Standard	300 hours	Summer	Full Sun	Prune for shape, remove excess fruit for better quality.
<i>Prunus armeniaca</i>	Rosaceae	Apricot	Standard/Espalier	300 hours	Early Summer	Full Sun	Prune in late summer, requires pollination.
<i>Morus rubra</i>	Moraceae	Red Mulberry	Standard	100 hours	Spring-Summer	Full Sun	Prune in winter, attracts birds, tolerates drought.
<i>Vitis girdiana</i>	Vitaceae	Desert Grape	Vining	100 hours	Late Summer-Fall	Full Sun	Prune in winter, trellis required, tolerates drought.
<i>Rubus ursinus</i>	Rosaceae	California Blackberry	Vining	200 hours	Spring-Summer	Partial Sun	Prune old canes, train new growth, attracts pollinators.
<i>Ribes aureum</i>	Grossulariaceae	Golden Currant	Shrub	400 hours	Late Spring-Summer	Partial Sun	Minimal pruning, tolerates shade, attracts wildlife.
<i>Passiflora edulis</i>	Passifloraceae	Passionfruit	Vining	100 hours	Summer-Fall	Partial Sun	Train on trellis, prune annually, needs support.

Vegetable & Herb Kitchen Garden

(Leafy Greens, Vegetables, and Fruiting Crops)

A nutrient-rich vegetable garden designed for continuous seasonal harvests, featuring companion planting and biodiversity support.

Scientific Name	Family Name	Common Name	Tree Form/Type	Chill Hours	Ripening Time	Sun Requirement	Maintenance Requirements
<i>Lactuca sativa</i>	Asteraceae	Lettuce	Partial Sun Leafy Green	None	Year-Round	Partial Sun	Succession plant every few weeks, requires cool weather.
<i>Brassica oleracea</i> <i>var. acephala</i>	Brassicaceae	Kale	Partial Sun Leafy Green	None	Year-Round	Partial Sun	Harvest leaves regularly, tolerates frost.
<i>Spinacia oleracea</i>	Amaranthaceae	Spinach	Partial Sun-Shade Leafy Green	None	Cool Season	Partial Sun	Bolts in heat, plant in cool weather, regular watering.
<i>Beta vulgaris</i>	Amaranthaceae	Beet	Partial Sun Root Crop	None	Spring-Summer	Partial Sun	Thin seedlings for better growth, harvest roots & leaves.
<i>Capsicum annuum</i>	Solanaceae	Bell Pepper	Full Sun Annual Vegetable	None	Summer	Full Sun	Prune lightly, requires staking, protect from frost.
<i>Solanum lycopersicum</i>	Solanaceae	Tomato	Full Sun Annual Fruit	None	Summer	Full Sun	Support with cage, prune suckers, rotate crops annually.
<i>Cucurbita pepo</i>	Cucurbitaceae	Zucchini	Full Sun Vining Vegetable	None	Summer	Full Sun	Mulch base to prevent rot, harvest frequently.
<i>Zea mays</i>	Poaceae	Corn	Full Sun Tall Annual	None	Summer	Full Sun	Plant in blocks for pollination, requires deep watering.

PERCHING & HABITAT PLANTS

CALIFORNIA SYCAMORE - CA NATIVE

Platanus racemosa



Large shade tree, supports biodiversity, tolerates wet soil.

REDTWIG DOGWOOD - CA NATIVE

Cornus sericea



Native, sacred in indigenous cultures, supports biodiversity

BLUE ELDERBERRY - CA NATIVE

Sambucus nigra ssp. caerulea



Fast-growing, attracts birds with edible berries, thrives in riparian zones.

VIRGINIA SWEETSPIRE - CA ADAPTED

Itea virginica



Native, sacred in indigenous cultures, supports biodiversity

ARROYO WILLOW - CA NATIVE

Salix lasiolepis



Deciduous riparian tree, provides habitat for birds, erosion control.

PACIFIC WAX MYRTLE - CA NATIVE

Myrica californica



Evergreen shrub, bird-friendly berries, windbreak near water.

FLOWERING CURRANT - CA NATIVE

Ribes sanguineum



Deciduous shrub, pink blooms, excellent for hummingbirds.

TOYON - CA NATIVE

Heteromeles arbutifolia



Evergreen shrub, red berries, attracts birds, drought-tolerant and moist conditions near ponds.

AQUATIC & SPLASH-TOLERANT PLANTS

CLUSTERED FIELD SEDGE - CA NATIVE

Carex praegracilis



Soft, walkable groundcover, excellent for moisture control.

CALIFORNIA GRAY RUSH - CA NATIVE

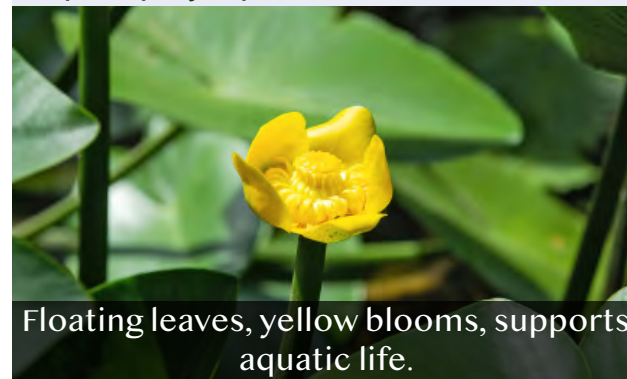
Juncus patens



Evergreen, rush-like texture, perfect for pond edges.

YELLOW POND LILY - CA NATIVE

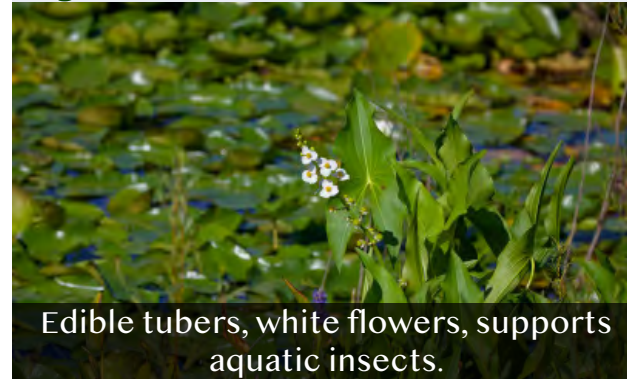
Nuphar polysepala



Floating leaves, yellow blooms, supports aquatic life.

ARROWHEAD - CA NATIVE

Sagittaria latifolia



Edible tubers, white flowers, supports aquatic insects.

SEASIDE DAISY - CA NATIVE

Erigeron glaucus



Purple flowers, low-growing, attracts butterflies, tolerates splash.

Alkali Sacaton - CA Native

Sporobolus airoides



Drought-tolerant bunchgrass, soft texture, supports pollinators, thrives in dry & moist soil.

BROADLEAF CATTAIL - CA NATIVE

Typha latifolia



Filters water, provides bird shelter, thrives in shallow areas.

HORSETAIL - CA NATIVE

Equisetum hyemale



Tall, vertical form, tolerates water fluctuations, ancient lineage.

Perching & Habitat Plants

(Shelter, Perches & Bird-Friendly)

These trees and shrubs provide safe perching, nesting spots, and shelter for birds while enhancing the pond's vertical structure and biodiversity.

Scientific Name	Family Name	Common Name	Plant Type	Sun Require-	Water Require-	Maintenance Requirements
<i>Platanus racemosa</i>	Platanaceae	California Sycamore	Large Shade Tree	Full Sun	Medium	Prune seasonally for shape; tolerates wet soil.
<i>Salix lasiolepis</i>	Salicaceae	Arroyo Willow	Riparian Tree	Full Sun	High	Prune to maintain shape; supports erosion control.
<i>Cornus sericea</i>	Cornaceae	Redtwig Dogwood	Multi-Stem Shrub	Partial Sun	Medium-High	Cut back in winter to encourage red stem color.
<i>Myrica californica</i>	Myricaceae	Pacific Wax Myrtle	Evergreen Shrub	Full Sun	Medium	Minimal pruning; drought-tolerant once established.
<i>Sambucus nigra ssp. caerulea</i>	Adoxaceae	Blue Elderberry	Deciduous Shrub	Full Sun	Medium	Prune lightly after fruiting; attracts birds.
<i>Ribes sanguineum</i>	Grossulariaceae	Flowering Currant	Deciduous Shrub	Partial Sun	Medium	Prune after flowering; excellent for pollinators.
<i>Itea virginica</i>	Iteaceae	Virginia Sweetspire	Moisture-Loving Shrub	Partial Sun	High	Trim after flowering; thrives in wet areas.
<i>Heteromeles arbutifolia</i>	Rosaceae	Toyon	Evergreen Shrub	Full Sun	Low-Medium	Evergreen shrub, red berries, attracts birds, drought-tolerant.

Aquatic & Splash-Tolerant Plants

(Water Filtration, Habitat & Soft Aesthetic)

These low-growing and aquatic plants thrive near water edges, helping stabilize soil, oxygenate the pond, and filter runoff while providing habitat for aquatic insects, amphibians, and birds.

Scientific Name	Family Name	Common Name	Plant Type	Sun Requirement	Water Requirement	Maintenance Requirements
<i>Carex praegracilis</i>	Cyperaceae	Clustered Field Sedge	Grass-like Groundcover	Partial Sun	Medium-High	Tolerates wet and dry conditions; mow occasionally.
<i>Erigeron glaucus</i>	Asteraceae	Seaside Daisy	Flowering Groundcover	Full Sun	Low	Deadhead for continuous bloom; drought-tolerant.
<i>Juncus patens</i>	Juncaceae	California Gray Rush	Rush	Full Sun	High	Tolerates seasonal flooding; minimal maintenance.
<i>Sporobolus airoides</i>	Poaceae	Alkali Sacaton	Drought-Tolerant Bunch-grass	Full Sun	Low-Medium	Drought-tolerant, soft texture, supports pollinators.
<i>Nuphar polysepala</i>	Nymphaeaceae	Yellow Pond Lily	Floating Aquatic	Full Sun	High	Prefers still water; remove old leaves as needed.
<i>Typha latifolia</i>	Typhaceae	Broadleaf Cattail	Emergent Aquatic	Full Sun	High	Cut back in winter; controls erosion.
<i>Sagittaria latifolia</i>	Alismataceae	Arrowhead	Wetland Perennial	Full Sun	High	Harvest tubers if desired; supports aquatic insects.
<i>Equisetum hyemale</i>	Equisetaceae	Horsetail	Moisture-Loving Perennial	Partial Sun	Medium-High	Trim to control spreading; unique vertical form.

Soil Preparation: Building a Resilient Foundation for Growth



SOIL COMPOSITION & TARGETED AMENDMENTS

Improving Drainage & Structure:

- Clay-heavy soil: Aeration and organic matter (compost, gypsum, sand) will improve drainage and prevent compaction.
- Sandy soil: Biochar, aged manure, and compost will boost water retention and nutrient availability.

Enhancing Moisture Conservation & Soil Life:

- Mulching with shredded bark, leaf litter, or gravel will suppress weeds, retain moisture, and encourage beneficial microbes.

MICROBIAL ENRICHMENT: STRENGTHENING SOIL BIOLOGY

Healthy soil supports a self-sustaining ecosystem of microorganisms that enhance nutrient cycling and plant health.

- Compost tea & mycorrhizal fungi inoculation will stimulate soil fertility, improving root absorption.
- Leguminous cover crops (clover, vetch) can naturally fix nitrogen into the soil, reducing the need for synthetic fertilizers.

PH BALANCE & ADJUSTMENTS FOR OPTIMAL GROWTH

- Acidic soil: Lime application will raise the pH to promote plant health.
- Alkaline soil: Sulfur or peat moss can lower pH, ensuring a balanced environment for diverse plant species.

By tailoring soil preparation to the site's natural conditions, this nourishing landscape will foster deep-rooted resilience, biodiversity, and long-term ecological balance—creating a healing sanctuary that thrives for generations to come.

SOIL PREPARATION

Recommended Irrigation Strategies: Sustainable & Efficient Water Use



SMART WATERING STRATEGIES

- Drip Irrigation: Directly hydrates root zones, reducing evaporation and runoff.
- Mini-Rotators & Micro-Sprayers: Provide uniform coverage, especially in edible gardens.
- Rainwater Harvesting & Bioswales: Capture and reuse rainwater, naturally replenishing groundwater.

WATERING SCHEDULE & ADJUSTMENTS

During Establishment (First 6-12 Months)

- Trees: Deep watering 2x per week for strong root development.
- Shrubs: Drip irrigation 2-3x per week, depending on plant needs.
- Groundcovers: Light, frequent watering to support healthy spread.

Beyond Establishment (After 12 Months)

- Low-Water Schedule: Reduce watering to once per week for trees/shrubs.
- Deep, Infrequent Watering: Encourages drought tolerance and root depth.

DROUGHT ADAPTATION STRATEGIES

- Mulching: Retains moisture, regulates temperature, and suppresses weeds.
- Low-Water-Use Plants: Prioritizing California natives & Mediterranean species.
- Hydrozone Planning: Grouping plants by water needs to prevent overwatering.

By integrating these strategic irrigation techniques, the garden will conserve water, promote resilience, and support long-term ecological sustainability.

IRRIGATION