

"A COASTAL SANCTUARY FOR MODERN FAMILY LIVING"

PROJECT BY PATRESE WINTER
LED BY PAMELA BRIEF

THE BEVERLY HILLS
LANDSCAPE ARCHITECT

BACKYARD & FRONT YARD
DESIGN PLAN

1834 16TH ST.
SANTA MONICA, CA



THE CLIENT



The clients are a 35-year-old couple, first-time homeowners, living with their 8-year-old daughter and their beloved Dachshund.

FAMILY
BONDING

OUTDOOR
PLAY

SPACE SUPPORTS

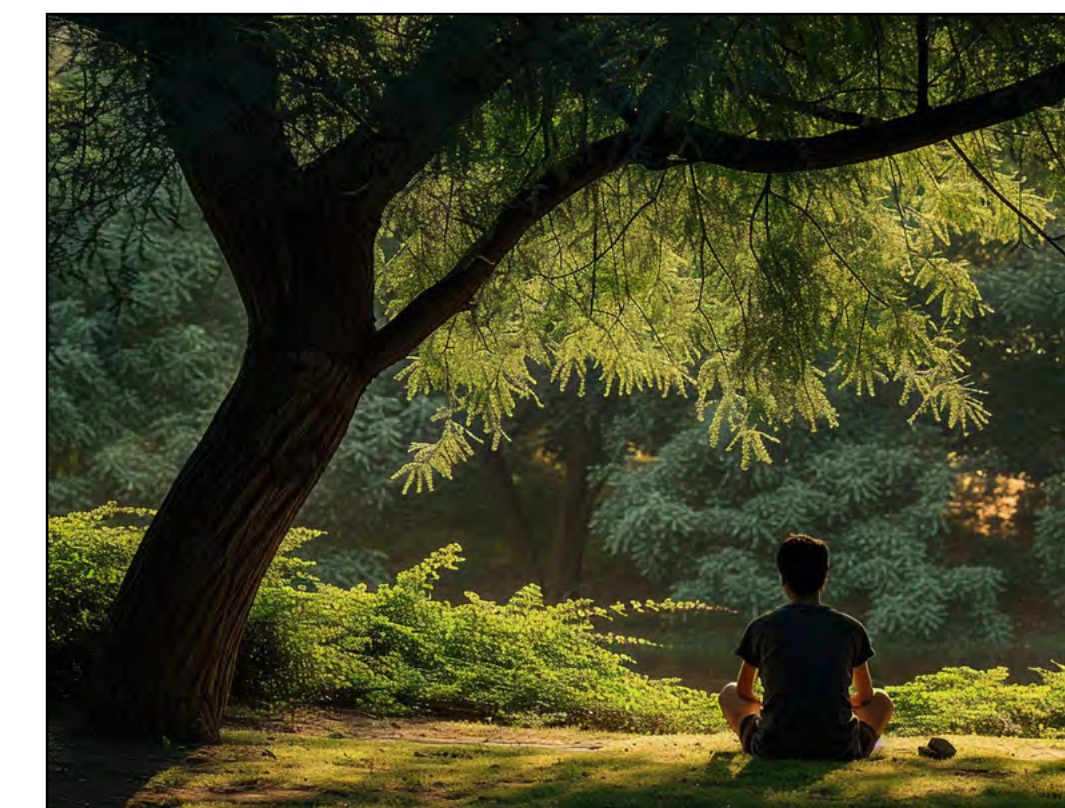
RELAX

PET
FRIENDLY

PROGRAM REQUIREMENTS



POLLINATORS



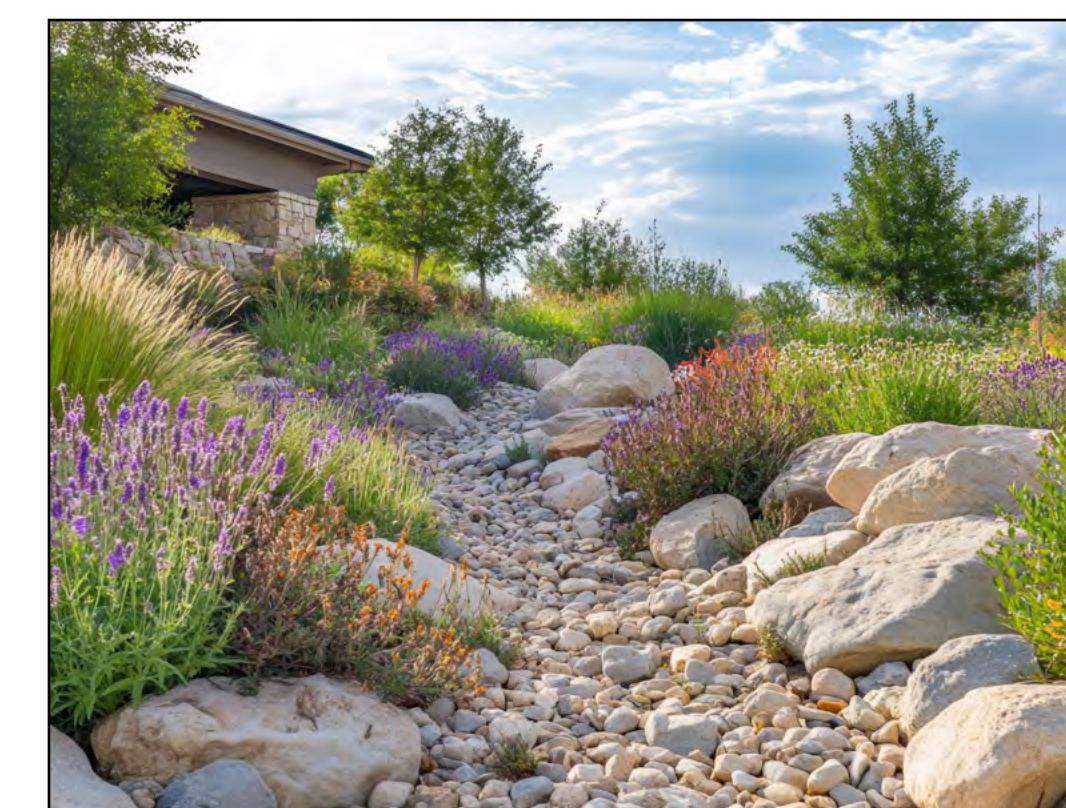
YOGA/MEDITATION



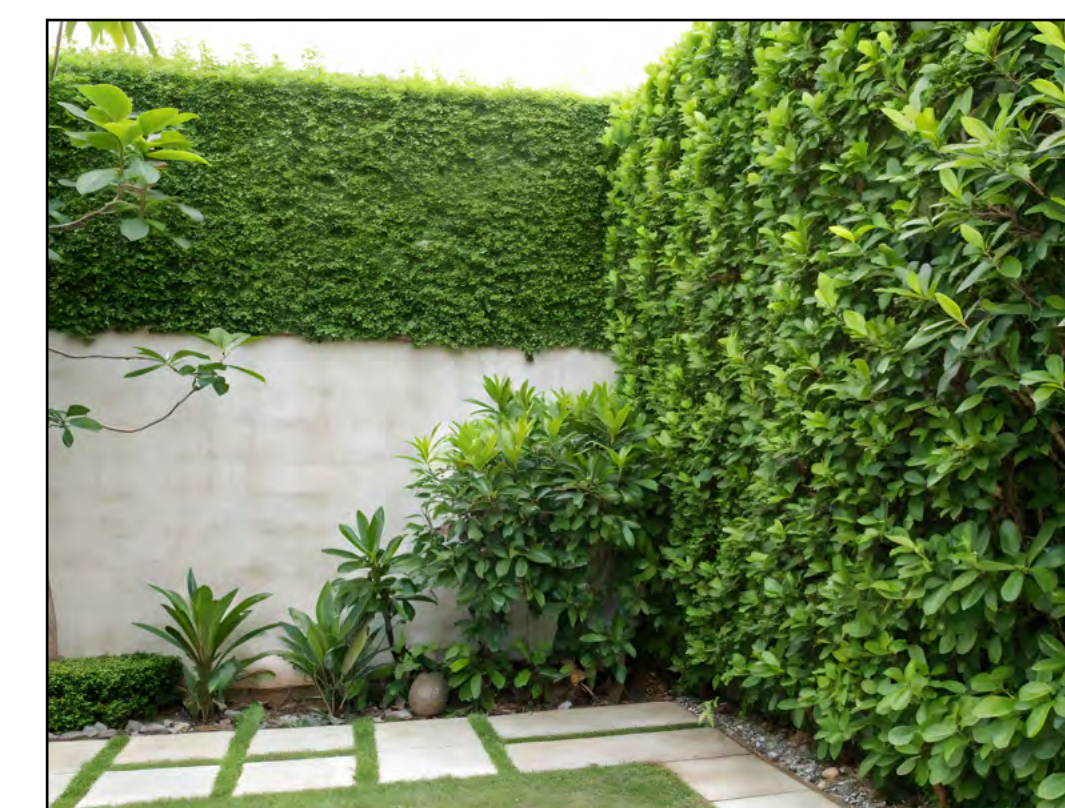
PLAY LAWN



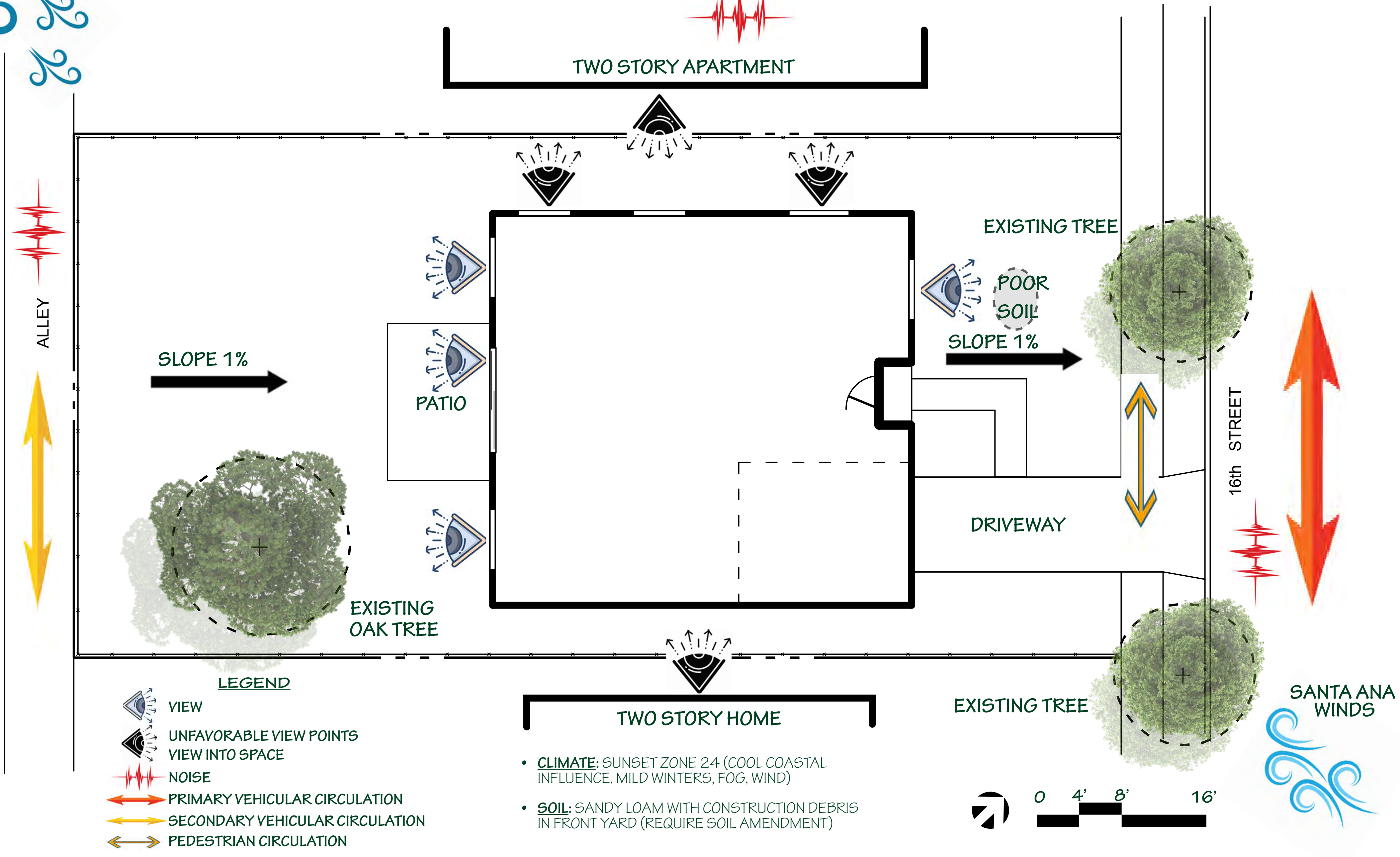
EDIBLES



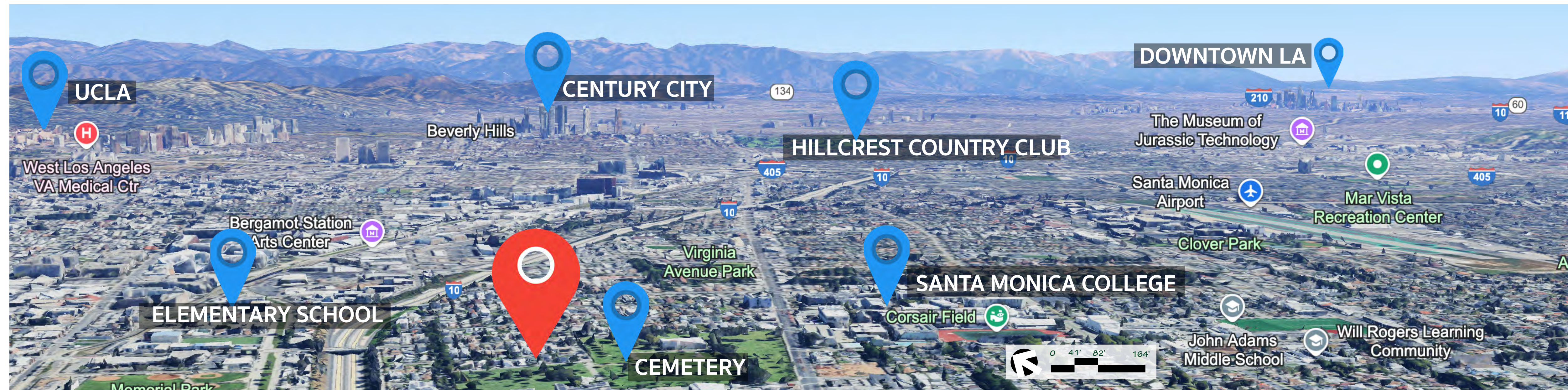
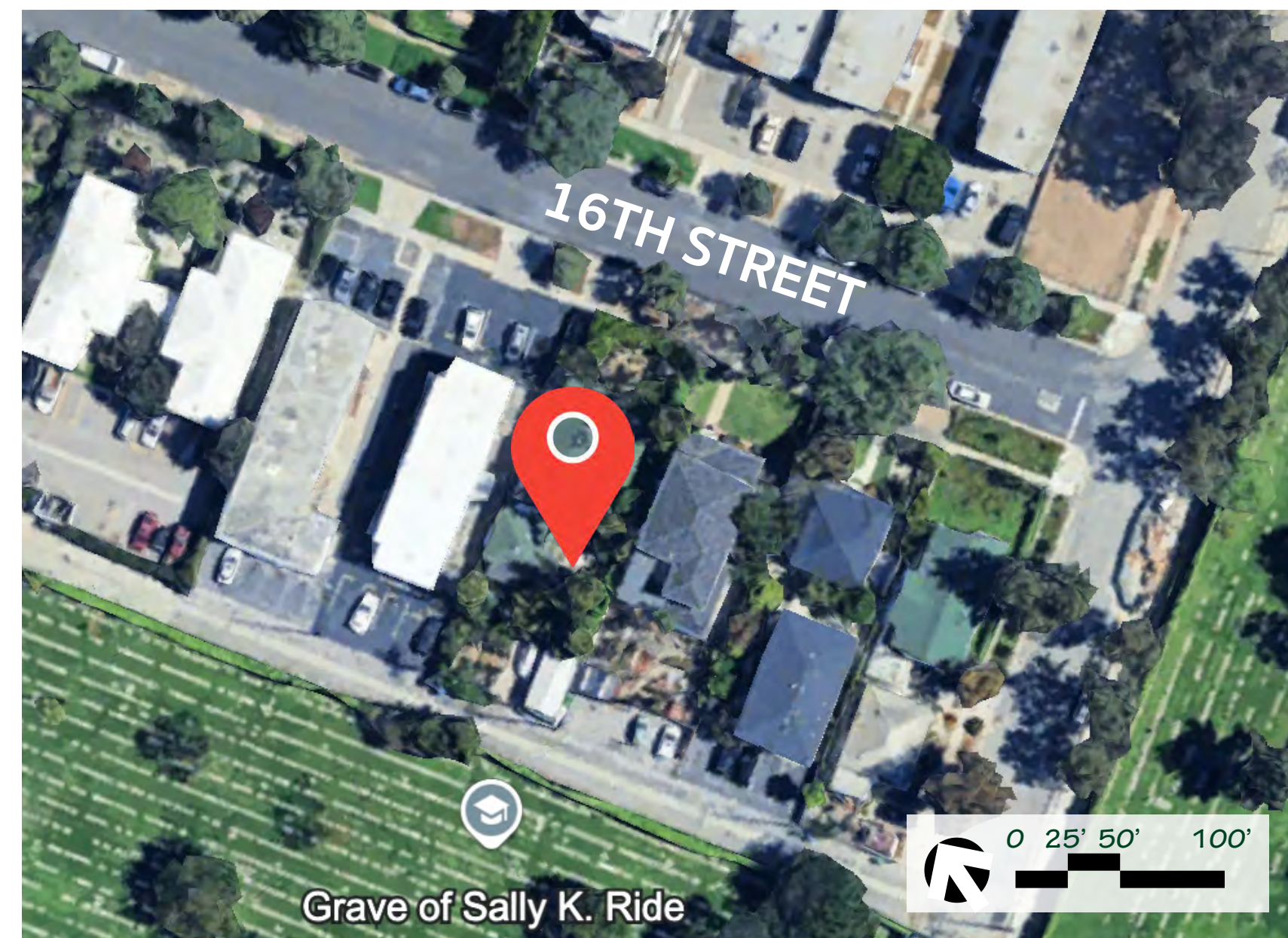
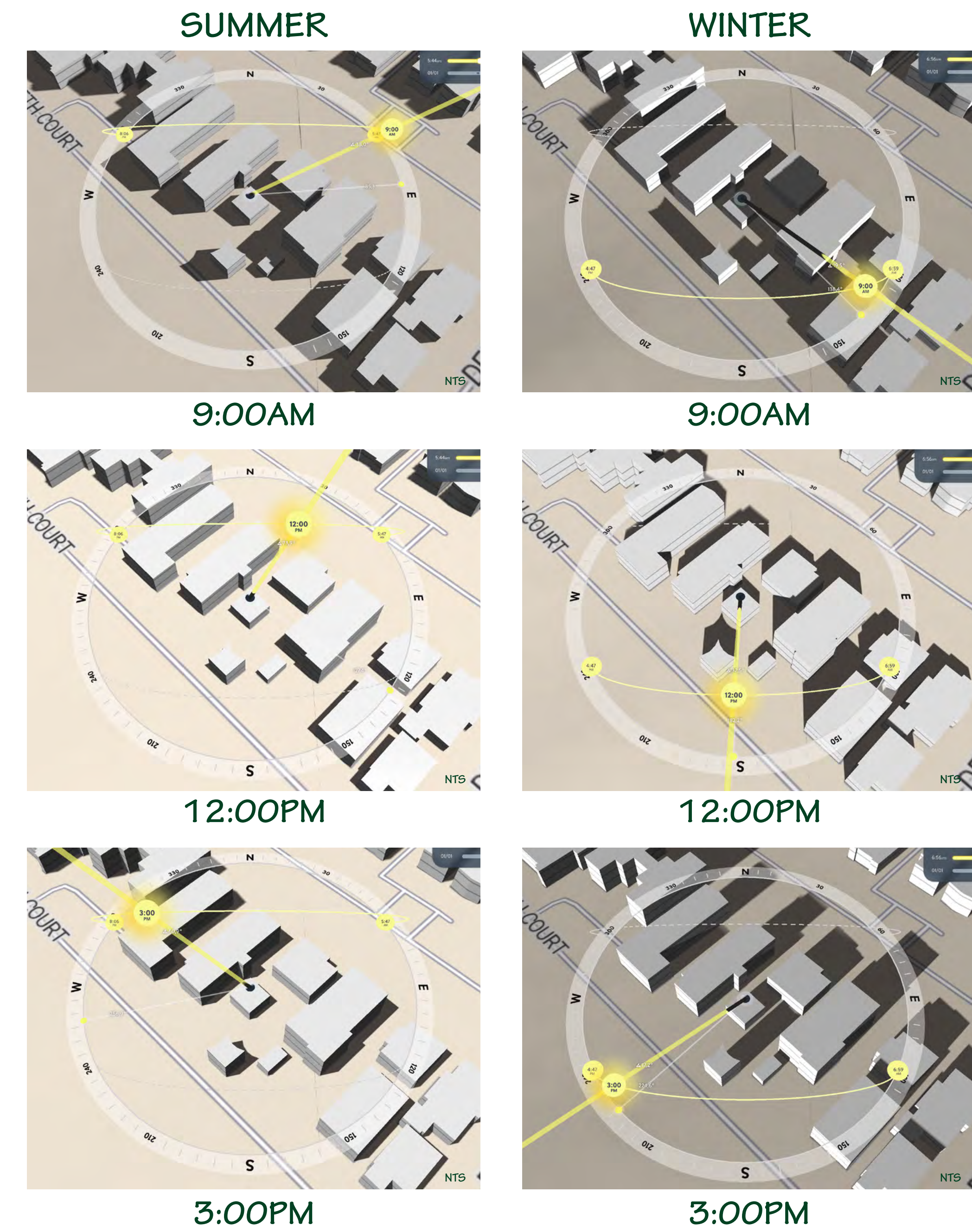
WATER RETENTION



PRIVACY

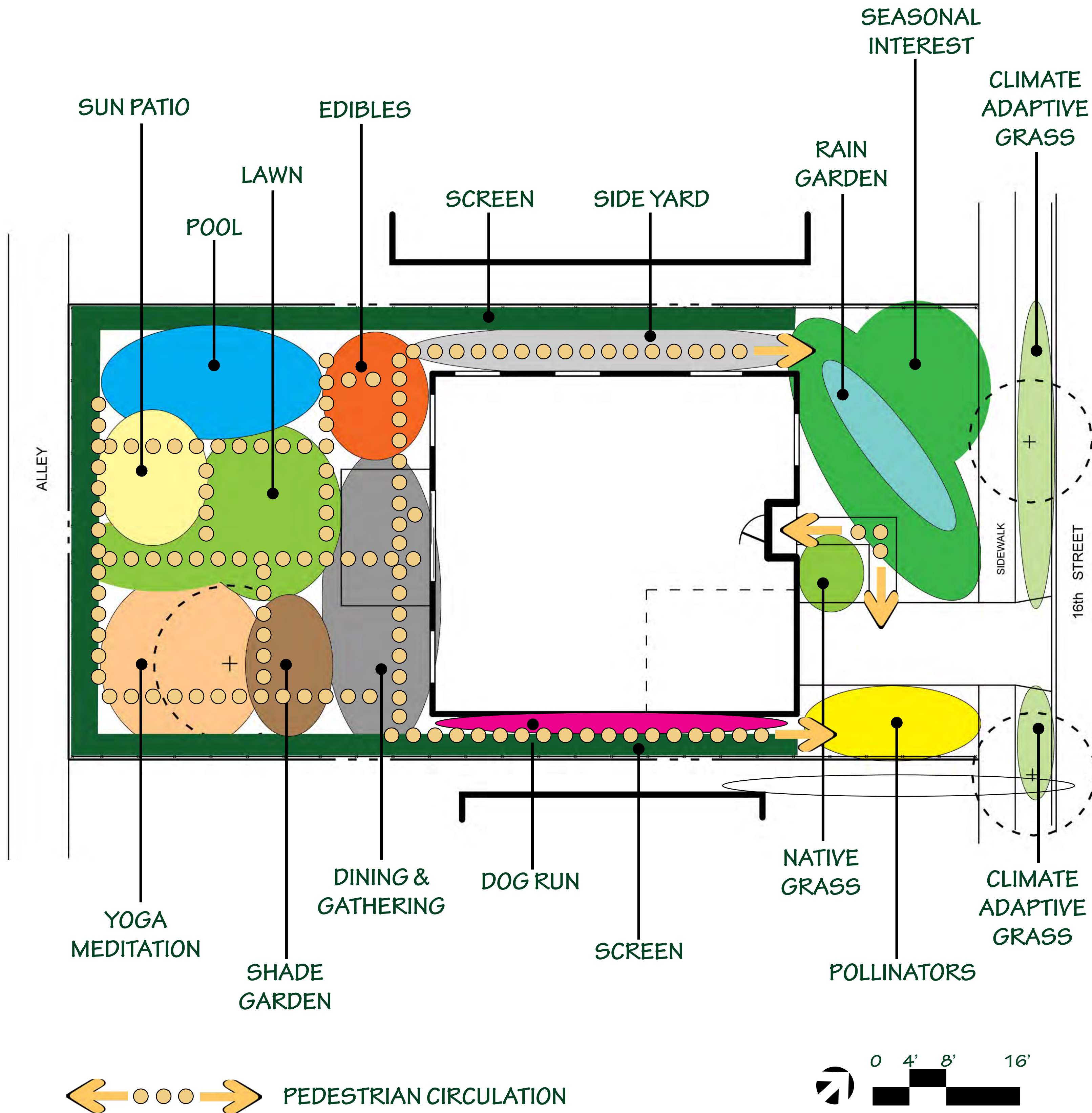


SUN PATH & SEASONAL SHADE ANALYSIS



DESIGN CONCEPT & PLANT PALLET

BUBBLE DIAGRAM



Dymondia margaretae



Jasminum sambac



Gaura lindheimeri



Festuca glauca



Arctostaphylos 'Howard Mc-Minn'



Lavandula stoechas



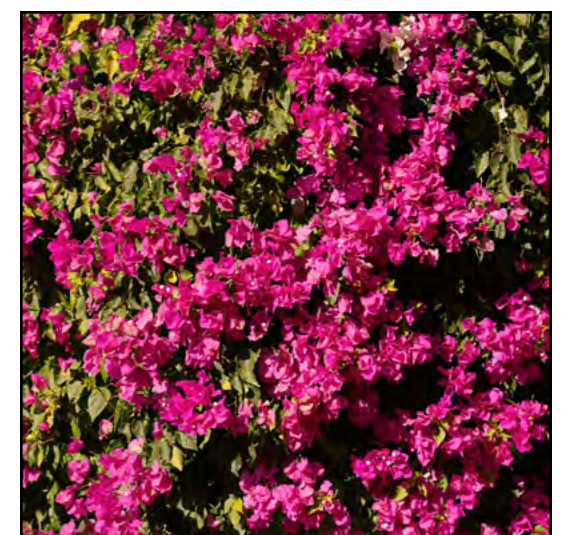
Dietes grandiflora



Juncus patens



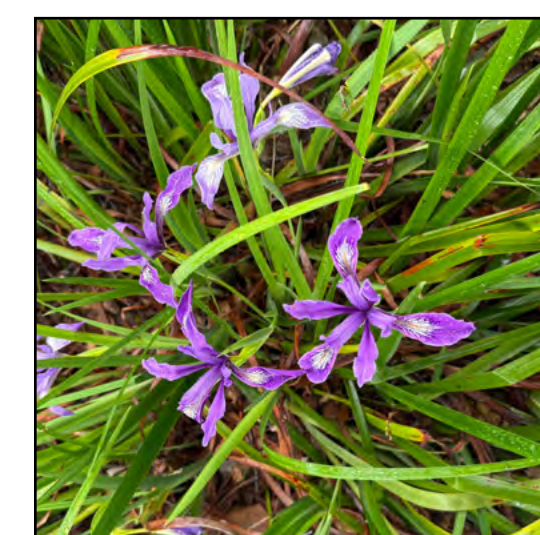
Carex pansa



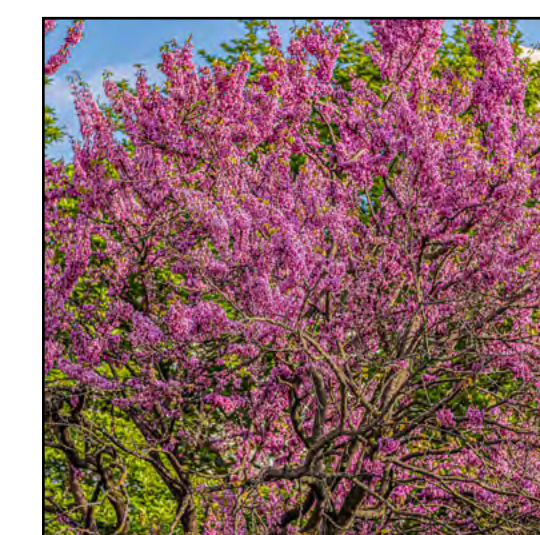
Bougainvillea sp.



Heuchera maxima



Iris douglasiana



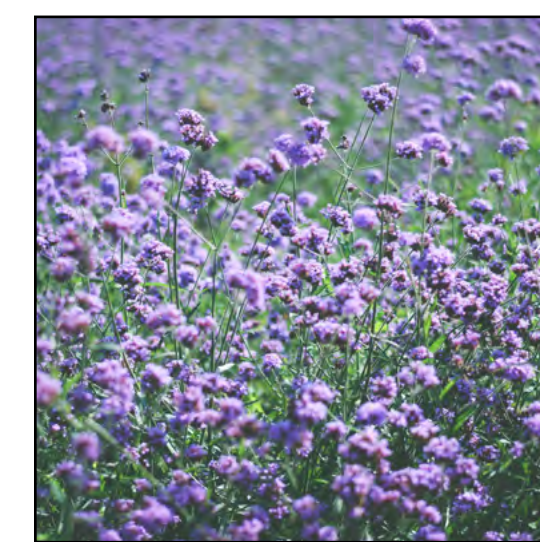
Cercis occidentalis



Muhlenbergia capillaris



Ficus nitida



Verbena rigida



Nepeta x faassenii



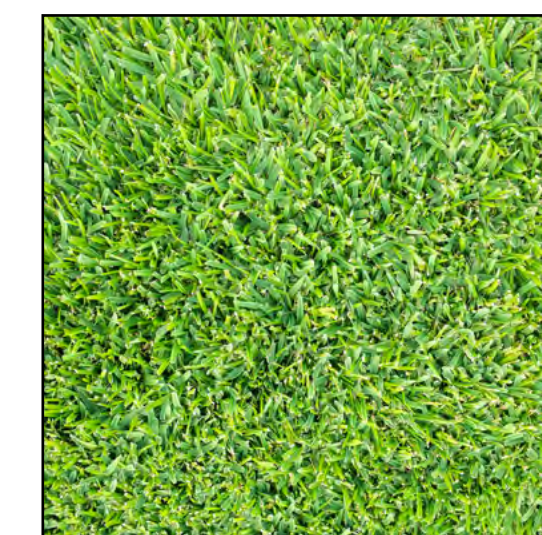
Salvia spathacea



Thymus serpyllum



Liriope muscari 'Big Blue'



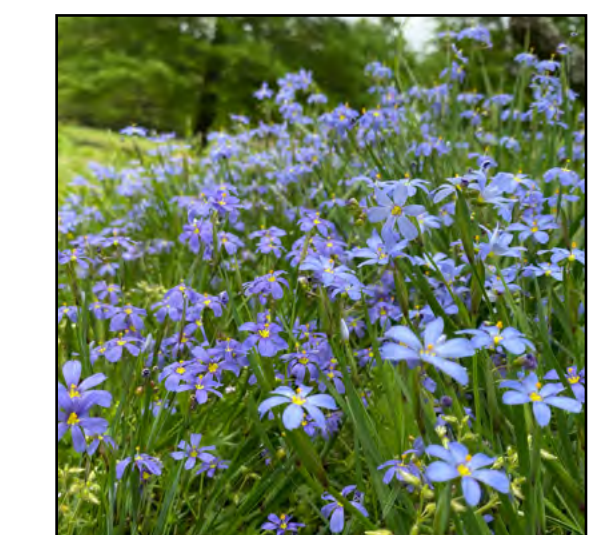
Buchloe dactyloides 'Sundancer'



Aspidistra elatior

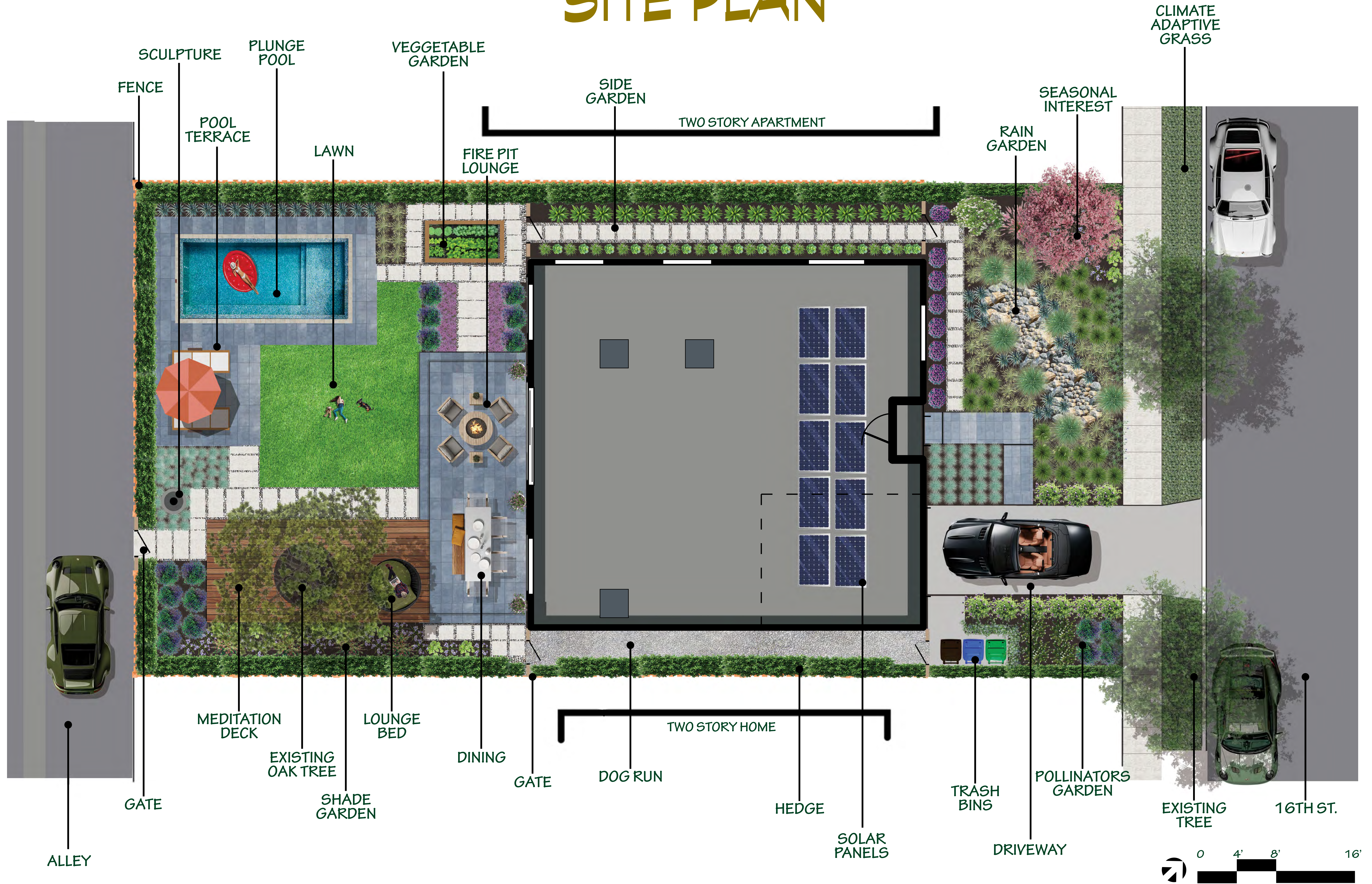


Heuchera 'Lime Rickey'



Sisyrinchium bellum

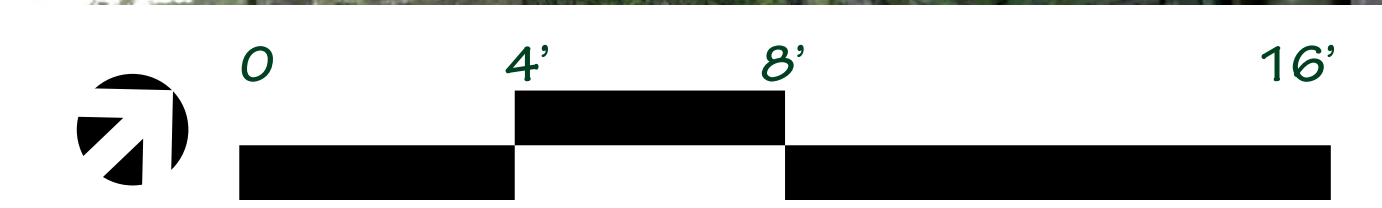
SITE PLAN



ENLARGEMENT 1 | FRONT YARD

“A vibrant, water-wise haven that welcomes pollinators, celebrates the seasons, and thrives with elegance.
YOUR SANCTUARY IS HERE.”

SYMBOL	BOTANICAL NAME	COMMON NAME	FAMILY NAME	WIDTH & HEIGHT	WUCOLS	ORIGIN	FLOWER COLOR & SEASON	QTY.	CONTAINER	MAINTANANCE REQUIREMENTS
	<i>Jasminum sambac</i>	Arabian Jasmine	Oleaceae	3-5' W x 4-6' H	Moderate	South/Southeast Asia	White, spring to fall	6	5 gal	Prune lightly, regular water, frost-sensitive
	<i>Gaura lindheimeri</i>	Whirling Butterflies	Onagraceae	2-3' W x 2-4' H	Low	Texas, Louisiana	White/pink, spring to fall	4	1 gal	Cut back in winter, drought-tolerant
	<i>Nepeta x faassenii</i>	Catmint	Lamiaceae	2-3' W x 1-2' H	Low	Hybrid (garden origin)	Lavender-blue / Spring-Fall	4	1 gal	Cut back after bloom for reflush.
	<i>Lavandula stoechas</i>	Spanish Lavender	Lamiaceae	2-3' W x 2-3' H	Low	Mediterranean	Purple, spring to summer	9	1 gal	Prune after bloom, well-drained soil.
	<i>Festuca glauca</i>	Blue Fescue	Poaceae	1' W x 1' H	Low	Europe	Tan / Summer	25	1 gal	Cut back in spring; divide every few years.
	<i>Juncus patens</i>	California Gray Rush	Juncaceae	1-2' W x 1-3' H	Low	California native	Brown, inconspicuous - Summer	20	1 gal	Low - occasional thinning, drought-tolerant.
	<i>Diets grandiflora</i>	Fortnight Lily	Iridaceae	2-4' W x 2-4' H	Low	South Africa	White with yellow / Spring-Fall	33	1 gal	Remove spent flower stalks.
	<i>Carex pansa</i>	California Meadow Sedge	Cyperaceae	1-2' W x 0.5-1' H	Low	California Native	Green foliage, rarely flowers	23	1 gal	Low, mow occasionally or let naturalize
	<i>Sisyrinchium bellum</i>	Blue-eyed Grass	Iridaceae	6-12" W x 6-12" H	Low	California Native	Purple-blue flowers in late winter to spring	16	1 gal	Low-maintenance; cut back after bloom.
	<i>Heuchera maxima</i>	Island Alum Root	Saxifragaceae	2-3' W x 1-2' H	Low	California Native	Pink / Winter-Spring	5	1 gal	Remove spent flowers; low water.
	<i>Iris douglasiana</i>	Douglas Iris	Iridaceae	1-2' W x 1-2' H	Low	California Native	Purple-blue / Spring	10	1 gal	Divide every few years; low maintenance.
	<i>Cercis occidentalis</i>	Western Redbud	Fabaceae	10-20' W x 10-20' H	Low	California Native	Pink, early spring	1	15 gal	Minimal, prune to shape.
	<i>Muhlenbergia capillaris</i>	Pink Muhly Grass	Poaceae	2-3' W x 3' H	Low	Southeastern US	Pink plumes, fall	2	1 gal	Cut back in late winter.
	<i>Arctostaphylos 'Howard McMinn'</i>	Manzanita 'Howard McMinn'	Ericaceae	4-6' W x 4-6' H	Low	California hybrid	White/pink, winter to spring	1	5 gal	Very low, avoid summer watering.
	<i>Verbena rigida</i>	Slender Vervain	Verbenaceae	2-3' W x 1-1.5' H	Low	South America	Purple, summer to fall	8	1 gal	Deadhead for continuous bloom.
	<i>Ficus nitida</i>	Indian Laurel Fig	Moraceae	2-3' W x 20-30' H (as hedge)	Moderate	Asia	Inconspicuous	18	15 gal or box	Shear regularly as hedge.
	<i>Dymondia margaritae</i>	Dymondia	Asteraceae	2-3' W x 1-2' H	Low	South Africa	Yellow, summer	Flat or 4" pot	Very low, drought-tolerant	Shear regularly as hedge.



DIGITAL 3D MODEL | FRONT YARD



ENLARGEMENT 2 | BACKYARD



SYMBOL	BOTANICAL NAME	COMMON NAME	FAMILY NAME	WIDTH & HEIGHT	WUCOLS	ORIGIN	FLOWER COLOR & SEASON	QTY.	CONTAINER	MAINTANANCE REQUIREMENTS
	<i>Nepeta x faassenii</i>	Catmint	Lamiaceae	2-3' W x 1-2' H	Low	Hybrid (garden origin)	Lavender-blue / Spring-Fall	13	1 gal	Cut back after bloom for reflush.
	<i>Iris douglasiana</i>	Douglas Iris	Iridaceae	1-2' W x 1-2' H	Low	California Native	Purple-blue / Spring	16	1 gal	Divide every few years; low maintenance.
	<i>Salvia spathacea</i>	Hummingbird Sage	Lamiaceae	4-6' W x 1-3' H	Low	California Native	Magenta / Spring-Summer	4	1 gal	Cut back in late summer.
	<i>Heuchera maxima</i>	Island Alum Root	Saxifragaceae	2-3' W x 1-2' H	Low	California Native	Pink / Winter-Spring	10	1 gal	Remove spent flowers; low water.
	<i>Festuca glauca</i>	Blue Fescue	Poaceae	1' W x 1' H	Low	Europe	Tan / Summer	37	1 gal	Cut back in spring; divide every few years.
	<i>Juncus patens</i>	California Gray Rush	Juncaceae	1-2' W x 1-3' H	Low	California native	Brown, inconspicuous - Summer	15	1 gal	Low - occasional thinning, drought-tolerant.
	<i>Diets grandiflora</i>	Fortnight Lily	Iridaceae	2-4' W x 2-4' H	Low	South Africa	White with yellow / Spring-Fall	8	1-5 gallon	Remove spent flower stalks.
	<i>Thymus serpyllum</i>	Creeping Thyme	Lamiaceae	1-2' W x 2-4" H	Low	Europe, North Africa	Pink-purple / Summer	30	4" or 1 gallon	Shear after flowering.
	<i>Bougainvillea sp.</i>	Bougainvillea	Nyctaginaceae	2-3' W x 6-8' H (on a pot)	Low	South America	Magenta, Pink, Orange / Year-round (warm climates)	3	5 gallon or larger	Needs pruning; drought-tolerant.
	<i>Ficus nitida</i>	Indian Laurel Fig	Moraceae	2-3' W x 20-30' H (as hedge)	Moderate	Asia	Inconspicuous	56	15 gal or box	Shear regularly as hedge.
	<i>Buchloe dactyloides 'Sundancer'</i>	Sundancer Buffalograss	Poaceae	4-6' W x 4-6" H	Low	Great Plains, U.S.	Greenish / Summer	85 slabs or 23 rolls	Plugs or sod	Mow occasionally; low water.

Designed for quiet moments, joyful gatherings, and timeless beauty.

YOUR SANCTUARY IS HERE.




DIGITAL 3D MODEL | BACKYARD



ENLARGEMENT 3 - SIDE YARD



SYMBOL	BOTANICAL NAME	COMMON NAME	FAMILY NAME	WIDTH & HEIGHT	WUCOLS	ORIGIN	FLOWER COLOR & SEASON	QTY.	CONTAINER	MAINTANANCE REQUIREMENTS
	<i>Aspidistra elatior</i>	Cast Iron Plant	Asparagaceae	2-3' H x 1.5-2' W	Low	Asia (Japan, Taiwan)	Purple, hidden near base - Summer	17	5 gal	Very low; remove damaged leaves
	<i>Heuchera 'Lime Rickey'</i>	Lime Rickey Coral Bells	Saxifragaceae	10-15" H x 12-18" W	Moderate	Hybrid (North American natives)	White to pale pink - Spring to Summer	16	1 gal	Low; trim dead leaves, divide every few years
	<i>Liriope muscari 'Big Blue'</i>	Big Blue Lilyturf	Asparagaceae	12-18" H x 12-24" W	Moderate	East Asia	Purple - Late Summer to Fall	15	1 gal	Low; cut back in late winter to refresh growth
	<i>Ficus nitida</i>	Indian Laurel Fig	Moraceae	2-3' W x 20-30' H (as hedge)	Moderate	Asia	Inconspicuous	40	15 gal or box	Shear regularly as hedge.



From the front yard to the backyard to the quiet side yard, every space flows together as one harmonious experience—connecting nature, home, and family. Created for laughter, learning, and lasting memories.

YOUR SANCTUARY IS HERE.

THANK YOU!



PATRESE WINTER
LD5: PLANTING DESIGN
SPRING 2025