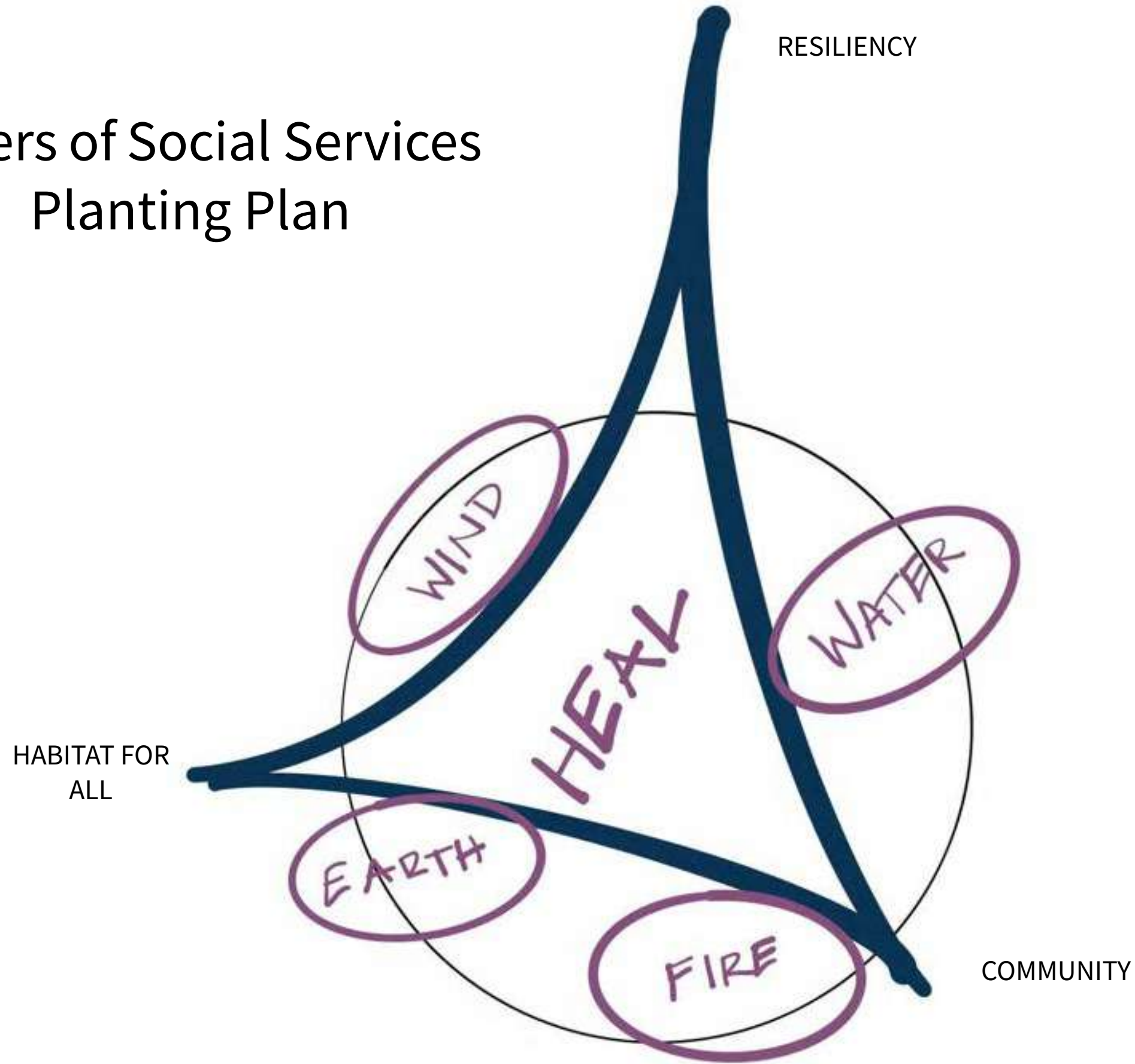



Sisters of Social Services Planting Plan



Nikki Rinehart
LD5-Planting Design
Pamela Brief
05-27-25

Table Of Contents

Introduction.....	3-5
Inspiration.....	6-8
Concept Development.....	9-10
Plant Palette	
Healing the Earth and all of Her Inhabitants.....	11-23
Healing Through Nourishing.....	24-31
Succulents.....	32-36
Project Documents	
Site Plan.....	L-1
Plant Schedule.....	L-2
Enlargements.....	L-3, L-4
Section and Sketches.....	L-5
Final Thoughts.....	42-43
References.....	43-44

A close-up photograph of several tall, purple flower spikes, likely lavender, with small, densely packed blossoms. The background is a soft, out-of-focus green, suggesting a garden or natural setting.

“Knowing that you love the earth changes you, activates you to defend and protect and celebrate. But when you feel that the earth loves you in return, that feeling transforms the relationship from a one-way street into a sacred bond.”

-Robin Wall Kimmerer, *Braiding Sweetgrass: Indigenous Wisdom, Scientific Knowledge, and Teachings of Plants*

INTRODUCTION

BIG IDEA

Life is precious. The communities who sustain life should be appreciated and worked with, not against. As the collective bearers of responsibility for these communities being at risk, it is our responsibility to do what we can to heal what we have wrought, and to also make life more peaceful and enjoyable. This palette is designed to do just that.

A priority was given to locally native, habitat supporting plants. What is fortunate is that so many who provide for the local insects and larger creatures, also provide for us Humans. The Salix, (Willow Sp.) are not only each host to over 200 species of moths and butterflies, but they also have a host of medicinal and cultural uses as well. These include but are not limited to analgesic, anti-inflammatory, anti-diabetic, and antimicrobial. Their plant material has also been used by indigenous people around the world to make sturdy baskets and other tools and home uses. Trichostema lanatum, Woolly Bluecurls, makes a wonderful, sweet tea. Eriogonums, Buckwheats, give sustenance to a variety of wildlife including native bees, wasps, butterflies, and birds, as well as to us. They have properties that also aid in easing burns, colds, menstruation, and relieving sore muscles and joint inflammation. By providing for everyone, we ultimately also provide for ourselves as well.

Native Plants throughout aid in healing the earth and selves. Creates biodiversity and attracts beneficial insects like wasps and beetles, who are predators and pollinators. All plants benefit everyone. Selections were considered for many properties and can be interchangeable throughout the site. Some are all encompassing, where they can be used in different settings and sustain wildlife while healing us or offering shade. All natives were prioritized first with their support of wildlife, humans second. But when we heal the earth and support wildlife, we are also invariably healing ourselves.



This palette was meant to be comprehensive, for the entire property. However, at the same time it is not. If I had compiled a palette of all the appropriate Native and crop plants, this would have turned into an encyclopedia. There I chose one species from a genus, with some exceptions based on specific uses (like *Salvia Apiana* and *S. columbariae*), but many are interchangeable with other species. For instance, there are several *Salix* and *Eriogonum* species that all grow together in their respective hydrozones. Pomegranate and Jujube fruit shrubs would be an excellent addition to a mixed-use orchard, and in drier conditions than apples and apricots. I chose to represent Spaghetti squash in the annual section but try summer squash such as yellow crookneck, scalloped squash, or traditional green Zucchini. Try red onions or leeks in your cool season annual bed. This palette isn't supposed to be the destination, but the start; something to wet your gardening palate.

LAYING THE GROUNDWORK

It is imperative to have the soil ready for its new tenants. These plants were bred to live in soil that was already inhabited by their ancestors and communities. That includes the community of mycorrhizal fungi and decaying native plant material. Unfortunately, this soil has been almost depleted of both. To encourage this community and to loosen the soil, I recommend sheet mulching with granulated humic acid, cardboard, and untreated/non dyed organic mulch. Spread gypsum generously throughout the grounds, then add a layer of cardboard with edges overlapping by 4 inches. Saturate the cardboard with water, and add 3-4 inches of mulch. Saturate the mulch. Water by hand or with rotary sprinklers for 3-6 months, once a week or when the mulch dries out. Do not allow the cardboard to dry out. Before spreading the mulch, you can spread annual wildflower seeds. These will help to loosen the soil and encourage the soil community. If time is a factor, you may cut holes in the cardboard the appropriate size for planting (see planting guide.)

Weed management is possible if you put the work in up front. I cannot stress the importance of mulch and annuals in the beginning. Instant weed mitigation. The mulch will keep most weeds at bay, but you need to pull weeds early. It's a give and give. The plants will do their jobs, but you need to help them get there. Once the native plants grow in, the mycorrhizal network in the soil will also help to keep them suppress them, though you may have to pull an invasive up here and there. Replenish the mulch. Leave bare soil for ground dwelling bees and wasps. A great place is the north side of a boulder or large rock. Which incidentally, is the perfect place for lizards to stay cool during the midday sun.



PLANTING

If you can, start with seed. If not, start with the smallest nursery pots size available. The younger a Native Plant is when it starts, the more successful and healthier it is in its lifetime. Sometimes you need a larger tree or shrub to start, but you will also get a head start on its habitat value.

Unless otherwise noted, start planting in late fall or early winter. Ideally it will be a wet year, but if not, you will just need to take some extra steps. Dig a hole twice as wide as the root ball and as deep. Scuff up the sides and bottom of the hole. Fill the hole with water and allow to drain. If the ground is dry, repeat once or twice. Backfill hole 2-3 inches to allow for settling. Add some water and allow to drain. Introduce your plant to its new home, and start filling in with soil, watering as you go. Build a berm 6-12" away from the root ball. For larger shrubs and trees, build another one 2' from that. Cover the ground with mulch outside of the initial berm. Many of these plants, especially the shrubs, benefit from having inorganic materials nearby, especially when they are young. Place a 1 ft "nurse rock" on the south side of a small shrub in order to protect the soil and crown from the sun. It also wouldn't hurt have different sized rocks throughout these habitats, as there are very few ecosystems in CA that I can think of that doesn't have them as part of the landscape. You can't turn around in undisturbed areas of the Conejo Valley without seeing rocks and boulders. Plus, they are habitat for small lizards and insects, amongst others.

Irrigate once/day for the first 5-7 days, if no rain. Go down to once/week for the first year. During summer months, do not water on days where the weather is supposed to go over 85 F. Irrigate very late at night or early in the morning. For shrubs that are quick to establish (like Salvias and if it is a wet year you can cut summer watering down.

GENERAL IRRIGATION

I recommend to irrigate by hand. There's nothing California Native Plants love more than the feel of rain. Plus, there's nothing like bonding with your habitat as being a part of its success. For larger trees and shrubs, a soaker hose or drip system may be installed. If, for some reason you are unable to water by hand, then a rotary or micro-spray sprinkler system may be installed on shrubs. For all plants water deeply but infrequently. During summer months, 1-2x per month max after establishment. During wet years you may be able to get by on summer dry conditions. During dry winters, water every 2-4 weeks, tapering off around March or April. Do not water when the weather is supposed to be over 85 degrees F, or your plants run the risk of fungal disease. During high wind events, increase irrigation.





GENERAL MAINTENANCE

Chop and drop. Use clippings for mulch. The microbiome in the soil thrives off of organic material of the plant community that is hosting them. Leave the leaves! Sweep leaf droppings off of paths and towards the plants. For larger leaves you may grind down, but leave enough larger pieces in undisturbed areas for hibernating insects.

Unless otherwise noted: trim fast growing shrubs back by 1/3 in June to lighten summer load. Unless listed as “summer dormant,” many of these plants thrive in summer heat. Salvias, Monardellas, and Cleomella arborea are just a few.

Small and medium shrubs prune in autumn. For a tidying appearance, you may trim back some dried flower stocks, but please leave a few for native bees to hibernate, and for birds who prefer to eat from the stalk. You may otherwise remove dried stalks in the beginning of spring. For trees, wait to prune until after nesting season, in the fall.

Some of these plants have formed a relationship with fire and grow better and healthier for it. Some can only propagate by fire, such as *Arctostaphylos* Sp. I cannot recommend prescribed burns done by anyone who is not deeply trained in the practice.

For a safer form of fire management in lieu of prescribed burns I recommend the following: prune as necessary to increase air flow and to control size. Remove old/dying branches. Use as mulch around habitat (unless diseased or pest infested), reserving some larger pieces to dry. Burn dried plant material in a large brazier on a cool, calm day. Wait at least a week for the ashes to fully cool, and spread burned plant material throughout the plant community you obtained it from before watering.

For powdery mildew, take molasses and water and spray it on the foliage to encourage beneficial bacteria and fungi to eat the mildew. Spray late in the afternoon.

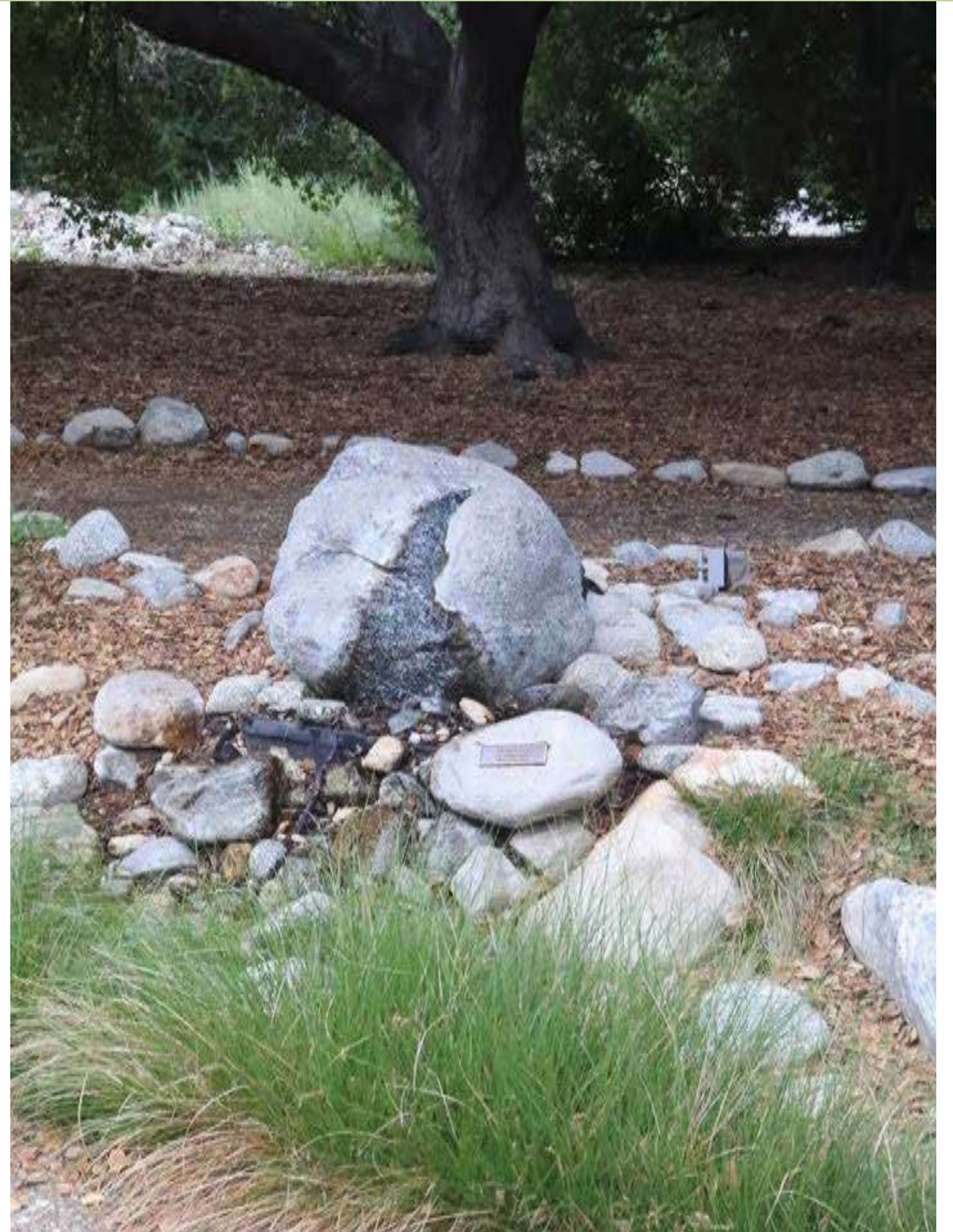


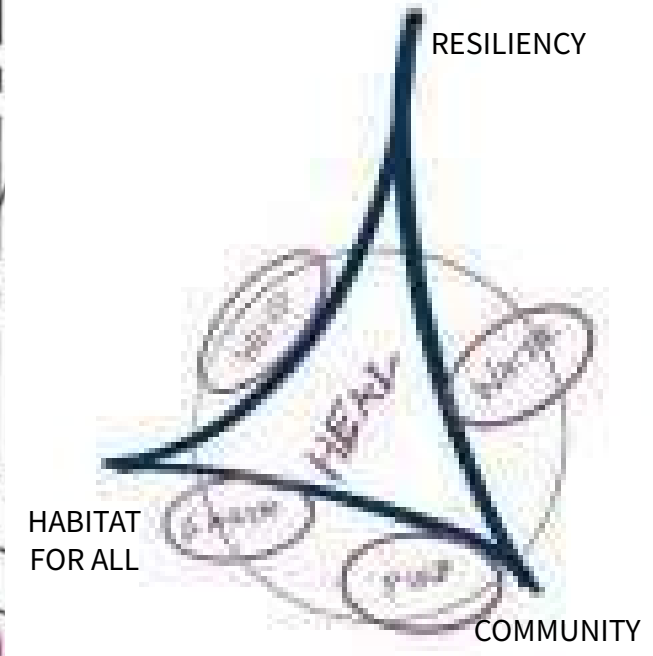
A note about pests: what are pests to humans, are food for other creatures. Some wasps lay their eggs inside aphids and other insects for the larvae to eat. Others kill or paralyze their “larva food” and place it outside of their eggs, which are typically in the ground but sometimes in a self-made paper nest. Lacewing, Hover Fly and Lady Beetle larvae have a voracious appetite for aphids, mealy bugs, mites, and other small insects, as well as eggs (Lady Beetles.) Lady Beetles adults will also feed on a list of “pest” insects, but they also eat pollen, and thus are pollinators as well, as are wasps. As long as the “problem” insect population stays low, I recommend NO TREATMENT.

*See “final thoughts” for information on pests to watch out for.









HEALING THE EARTH AND ALL OF HER INHABITANTS, AND BEYOND



All plants in this group are California Natives, with a priority given to local species who provide habitat to non-humans. They have various water needs and are Grouped by those needs. These plants can be arranged together with lower water use plants on the top of a slope and higher water need plants at the bottom, or integrated with plants of other uses in the same hydrozone. All plants in this grouping have some type of medicinal benefit and may have culinary and cultural uses as well.

Included is a list of wildflowers that may not have medicinal uses, but they are excellent for building an ecosystem. Some can get a bit aggressive but are easily pulled when young and in an undesirable location.

Sun Exposure
FS=Full Sun
PS=Part Shade
DS=Deep Shade

CF=Container Friendly
LA=Lawn Alternative



Cornus sericea

Medicinal- colds, coughs, sore throats, eye infections, hair support, headaches, infant and mother care, purification and ceremony
 Food-dogwood fruit.
 Cultural-baskets, toothbrush
 Collect- fruit: fall; twig, bark: all seasons; leaf: Sp/su

Asarum caudatum
 Medicine- colds, coughs, sore throats, infant and mother care, stomach disorders. Rheumatism, joint inflammation, sore muscles.

Food-spice

Stachys Sp.

Medicine-Antioxidant, anti-inflammatory, analgesic, antibacterial, wounds, memory.
 Food-tea

Collect-leaves: Sp-fall

Botanical name	Common Name	Plant Family	Height x Spread	Wildlife Supported	# Of Lepidoptera	Seasonality	Bloom Color/ Season	Maintenance	Special Notes	Drainage	Sun Exposure
<i>Cornus sericea</i>	Red Osier Dogwood	Cornaceae	4-13'x9-15'	Bats, Butterflies, Caterpillars	42	Wi Deciduous	White, Purple, Red Su	Remove undesirable rooting stems. Occasional pruning late in dormant season to control size.	Beautiful red branches exposed when dormant. Fall color foliage. Aggressive roots.	Variable	FS/PS/DS
<i>Asarum caudatum</i>	Creeping Wild Ginger	Aristolochiaceae	1'-spreading	N/A	N/A	Evergreen	Brown, purple, yellow Sp	Harvest as needed. Spreads by , rhizomes, and is easily propagated.	While not native to this region of California, <i>A. caudatum</i> does well in coastal gardens. GC, LA, CF	Adaptable	PS/DS
<i>Stachys albens</i>	White Hedge Nettle	Lamiaceae	1''x8'	Bats, Butterflies, Caterpillars, Bees, Hummingbirds, Birds	12	Wi Deciduous	Pink, Purple, Lavender, White May-Oct	Propagate rhizomes in order to keep from spreading.	Spreads by rhizomes. Can be aggressive. CF. E.	Variable	FS/PS



Botanical name	Common Name	Plant Family	Height x Spread	Wildlife Supported	# Of Lepidoptera	Seasonality	Bloom Color/ Season	Maintenance	Special Notes	Drainage	Sun
<i>Acmispon americanus</i>	American Bird's-foot Trefoil	Fabaceae	1'x1'	Butterflies, Caterpillars, Bees	28	Annual	Pink, White Sp/Su	Remove dead plant after seeds mature or pop.	For propagation by seed; soak in hot water for 24 hours. Nitrogen fixing. Use as cover crop in nourishing area. For propagation by seed; soak in hot water for 24 hours. CF	Variable	FS/PS
<i>Lupinus succulentus</i>	Succulent Lupine	Fabaceae	2-4'x3'	Bats, Birds, Bees, Butterflies, Caterpillars	51	Annual	Blue, Lavender, White Wi/Sp	Remove dead plant after seeds mature or pop.	Nitrogen fixing. Use as cover crop in nourishing are. Seeds should be left to fall naturally. If collected, should be soaked in hot water and scarified. CF	Med, slow	FS/PS
<i>Erythranthe cardinalis</i>	Scarlet Monkeyflower	Phrymaceae	2-3'x3'	Bats, Butterflies, Caterpillars, Bees, Hummingbirds, Birds	10	Evergreen	Red, orange Sp/Su/Fa	Deadhead to promote flowering and prevent floppy growth.	Readily reseeds. Plant with Hedgenettle and Western Columbine. CF	Variable	FS/PS



Typha latifolia

Medicine-toothache, wounds.
Food-Cattail corn, cattail golden pollen, cattail hearts with fresh greens, cattail soup.
Cultural-Baskets, floral arrangements.



Botanical name	Common Name	Plant Family	Height x Spread	Wildlife Supported	# Of Lepidoptera	Seasonality	Bloom Color/ Season	Maintenance	Special Notes	Drainage	Sun Exposure
<i>Baccharis salicifolia</i>	Mulefat	Asteraceae	6-12'x3-9'	Bats, Butterflies, Caterpillars, Birds	29	Evergreen, Su Semi-deciduous	Yellow, Pink, White Year Round	Tolerates heavy pruning. Prune to shape or down to the ground if looking scraggly.	Highly drought tolerant once established, looks best with summer irrigation.	Variable	FS
<i>Juncus Mexicanus</i>	Mexican Rush	Poaceae	4-31"x spreading	Bats, Caterpillars, Butterflies.	7	Evergreen, Su Semi-deciduous	Green, brown Sp	Keep rhizomes in check. Offers protection to small birds and mammals.	Though it loves water, still drought tolerant. Natural colorway provides variegated background when woven into basket. CF	Slow, standing	FS/PS
<i>Aquilegia formosa</i>	Western Columbine	Ranunculaceae	2-3'x1'	Bats, Butterflies, Caterpillars, Birds	5	We Deciduous, Evergreen	Red, yellow Sp	Deadhead if desired or allow flowers to go to seed.	Self Sows. Interesting geometric shape when looked at from the bottom of the flower, up.	Med	FS/PS/DS



Salvia apiana

Food; spice, fried leaves, seeds.
 Medicine-stomach disorders, strength.
 Cultural- flower arrangements, purification ceremonies.

Collect-flower seeds, stalks, leaves su



Eriogonum umbellatum

Medicine- Burns, colds, coughs, sore throats, rheumatism, sore muscles and joint inflammation.
 Cultural-Cut flowers.

Collection- leaf, flowers, root: sum



Eriodictyon crassifolium

Food- deserts
 Medicine- asthma, colds, decongestant, Poison oak, rheum, strength, wounds.

Collect leaf all seasons



Botanical name	Common Name	Plant Family	Height x Spread	Wildlife Supported	# Of Lepidoptera	Seasonality	Bloom Color/ Season	Maintenance	Special Notes	Drainage	Sun Exposure
<i>Salvia apiana</i>	White Sage	Lamiaceae	3-5'x3-8'	Bats, Butterflies, Caterpillars, Hummingbirds, Bees, Birds	10	Evergreen, Su semi-deciduous	White Su/Fa	Flower stalks may be removed when finished in late summer. Sprawling branches may be removed if desired at any time.	Distinct fragrance. Deeply rooted in the cultures of the Indigenous Communities of Southern California. Threatened by poaching.	Fast, Medium	FS
<i>Eriogonum umbellatum</i>	Sulfur Buckwheat	Polygonaceae	4-84"x5'	Bats, Butterflies, Caterpillars, Bees, Birds	47	Evergreen	Yellow Su/Fa	You may Cut back to new growth after seed heads have dried in the fall. I recommend cutting back after first flower to provide a longer food source for insects.	Eriogonum Sp. Are a keystone species. I recommend planting a number of different species throughout the site.	Fast, Medium	FS
<i>Eriodictyon crassifolium</i>	Thickleaf Yerba Santa	Hydrophyllaceae	3-10'x3-6'	Bats, Butterflies, Caterpillars	5	Evergreen, Su semi-deciduous	Lavender, brown Sp	Prune to shape.	Pleasant scent. Used for erosion control on banks.	Variable	FS



Fragaria vesca

Food: strawberries
 Medicine- diarrhea, wounds.

Collect-leaf: all seasons; fruit: summer



Quercus agrifolia,

Medicine- diarrhea, eye infections, infant and mother care, poison oak.
 Food-deserts, tofu, tortillas, oak nut flour.
 Cultural-dyes and paints, floral arrangement
 Collection: Bark, Twig: all seasons; Nut: fall.



Ceanothus sp.

Medicine- colds, coughs, sore throats, diarrhea, fever, household cleaner and disinfectant, infant and mother care, poison oak, varicose veins, weight loss
 Food-drinks
 Cultural-baskets, floral arrangements, soap.
 Collect Bark: all seasons; leaf, twig flower: spring, summer; root: winter



Botanical name	Common Name	Plant Family	Height x Spread	Wildlife Supported	# Of Lepidoptera	Seasonality	Bloom Color/ Season	Maintenance	Special Notes	Drainage	Sun Exposure
<i>Fragaria vesca</i>	Woodland Strawberry	Rosaceae	1-12"x3'	Bats, Birds, Butterflies, Caterpillars	42	Evergreen	White Wi/Sp	Contain with string trimmer. Annual spring pruning will freshen plantings and prevent thick-layered colonies. Spreads by runners. Lawn alternative.	Plant at a low spot/supply additional irrigation. WOCULS Moderate, but goes so well under oaks and other species. E. CF	Variable	FS/PS/DS
<i>Quercus agrifolia</i>	Coast Live Oak	Fagaceae	25-82'x15-35'	Bats, Butterflies, Caterpillars, Birds	163	Evergreen	Yellow, Cream, Green Wi/Sp	Only prune when necessary to control shape or remove dead/diseased branches. Avoid pruning large limbs. Do not prune during nesting season.	One of the fastest growing Oaks. Great for slopes. Watch for Invasive Shot-hole Borer, Gold-spotted Oak Borer.	Med	FS/PS
<i>Ceanothus oliganthus</i>	Hairy Ceanothus	Rhamnaceae	10'x12'	Bats, Butterflies, Caterpillars, Birds, bees, hoverflies.	93	Evergreen	Blue, purple Wi	Prune to shape after berries are done and before vegetative stage.	Bank Stabilization, hedge. Endemic. Avoid summer water after establishment. Keystone Sp.	Fast, Med	FS/PS



Botanical name	Common Name	Plant Family	Height x Spread	Wildlife Supported	# Of Lepidoptera	Seasonality	Bloom Color/ Season	Maintenance	Special Notes	Water Usage	Sun Exposure
<i>Prunus ilicifolia</i>	Hollyleaf Cherry	Rosaceae	30-49'x20'	Bats, Butterflies, Caterpillars	144	Evergreen	Cream, White Wi/Sp	No maintenance for the first few years. Prune to shape. Clean fallen fruit from paths.	Good street tree for small-med parkways. E	VL, L, M	FS/PS
<i>Eriogonum fasciculatum</i> 'Theodore Payne'	Theodore Payne Buckwheat	Polygonaceae	1'x3'	Birds, Butterflies, Wasps, Bats, Bees, Caterpillars	N/A	Evergreen	Pink, White Su	prune to control shape and keep from getting too woody, 1-2x/year	Selection of foothill and desert species of Southern California. Great for Erosion control. CF, LA	VL, L	FS
<i>Corethrogyne filaginifolia</i> 'Silver Carpet'	Silver Carpet Aster	Asteraceae	6"x3'	Birds, Butterflies, Wasps, Bats, Bees, Caterpillars	N/A	Evergreen	Violet, Yellow Su/Fa	May need annual pruning to maintain their shape. Can be deadheaded.	Section from Carol Bornstein of Santa Barbara Botanical Garden. CF, LA	VL, L	FS/PS



Epilobium canum

Medicine-fever, urinary tract infections.
Collect: leaves: summer, fall.

Collect: leaves: summer, fall.



Monardella viminea

Food-tea, spice. Lovely, strong minty scent and flavor. Use anywhere you would use the commonly available mint. Medicine-aphrodisiac, bug repellent, colds, coughs, sore throats, stomach disorders.
Cultural- floral arrangements.

Collection: leaf, flower: fa



Berberis pinnata

Medicine-eye infection, colds, coughs, sore throats; stomach disorders, strength, psoriasis.
Food- berries

Collection: root: fall; berries: summer



Botanical name	Common Name	Plant Family	Height x Spread	Wildlife Supported	# Of Lepidoptera	Seasonality	Bloom Color/ Season	Maintenance	Special Notes	Drainage	Sun Exposure
<i>Epilobium canum</i>	California Fuchsia	Onagraceae	3-24" x 4'	Bats, Birds, Butterflies, Caterpillars, Hummingbirds	15	Wi Semi-deciduous	Red Su/Fa	Allow to establish in first year. Cut to the ground in early winter. May pull unwanted rhizomes at any time.	An important habitat plant due to its late blooming cycle.	Variable	FS/PS
<i>Monardella viminea</i>	Willow Monardella	Lamiaceae	10-19" x 2-4'	Bats, Birds, Butterflies, Caterpillars, Hummingbirds	4	Evergreen, Su Semi-deciduous	Pink, Lavender Sp/Su/Fa	Prune to shape as desired, or harvest at will. May remove spent seed heads.	In Part shade or a little supplemental irrigation, will remain evergreen. Great along paths where people will be able to enjoy its strong scent. CF	Fast	FS/PS
<i>Berberis pinnata</i>	Coast Barberry	Berberidaceae	3-7' x 5'	Butterflies, Caterpillars, Hummingbirds, Birds	5	Evergreen	Yellow Wi/Sp	Slow growing. Remove dead branches and dried fruit for a neater appearance. Prune to shape.	Colorful new foliage. E. WOCULS Low, drought tolerant but looks better with supplemental irrigation.	Med	FS/PS/DS



Chlorogalum pomeridianum

Medicine poison oak
Food-shoots
Cultural-brushes, hunting tools, glue, soap.

Collect- shoots; Sp; bulbs: summer



Achillea millefolium

Food; yarrow ale, yarrow leaf salads, yarrow tea.
Medicine- colds, coughs, sore throats, hair support, stomach disorders, wounds.

Cultural- floral arrangements

Collect leaf: Sp; flower, root: su



Salvia columbariae

Medicine-Fevers, wounds, eye irritation, diabetes, energy.
Food-Seeds, porridge, crackers, roasted, bread, beverages.

Collect-Seeds: fall.



Botanical name	Common Name	Plant Family	Height x Spread	Wildlife Supported	# Of Lepidoptera	Seasonality	Bloom Color/ Season	Maintenance	Special Notes	Drainage	Sun Exposure
<i>Chlorogalum pomeridianum</i>	Soap Plant, Amole	Agavaceae	3'x2'	Bees, Caterpillars, Butterflies	1	Su Deciduous	White Sp/Su	Low maintenance.	Crush bulbs and water to produce lather. Versatile.	Med	FS/PS
<i>Achillea millefolium</i>	Common Yarrow	Asteraceae	1-3'x6-18" Spreading	Bats, Bees, Birds, Butterflies, Caterpillars	15	Evergreen, Su Deciduous, Su Semi-deciduous.	White, yellow Sp/Su	IF grown as walkable groundcover, trim to desired height. Low maintenance. Harvest leaves as needed.	Pleasant scent. Will stay evergreen with minimal supplemental water. Can be aggressive. After establishment takes high foot traffic.	Variable	FS/PS/DS
<i>Salvia columbariae</i>	Chia	Lamiaceae	4-19"x12"	Bats, Caterpillars, Butterflies, Birds Hummingbirds	12	Annual herb	Blue, purple Sp	Gather seed heads over a bowl or basket and beat with a seed beater. Alternatively, you can crush the pods and separate the seeds from the chaff.	Important food source for Indigenous Tribal Citizens. High in nutrients, protein, and oil.	Variable.	FS



Frangula californica

Medicine-fever, urinary tract infections.
Collect: leaves: summer, fall.

Collect: leaves: summer, fall.



Clinopodium Chandleri

Medicine- aphrodisiac; colds, coughs, sore throats, infant and mother care, insomnia, rheum, stomach disorder, strength, toothaches.

Collect leaf- spring, summer

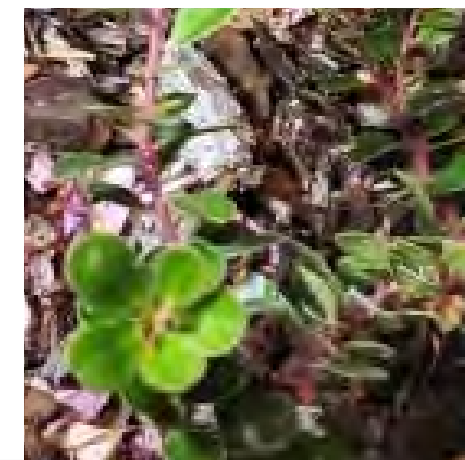


Symphoricarpos mollis
Medicine- eye infection

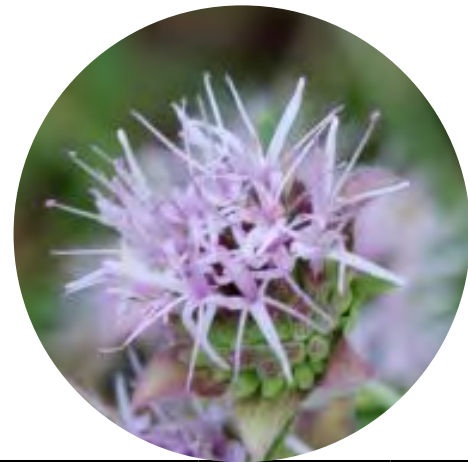
Cultural- floral arrangements.
Collect- Berries: winter (external use)



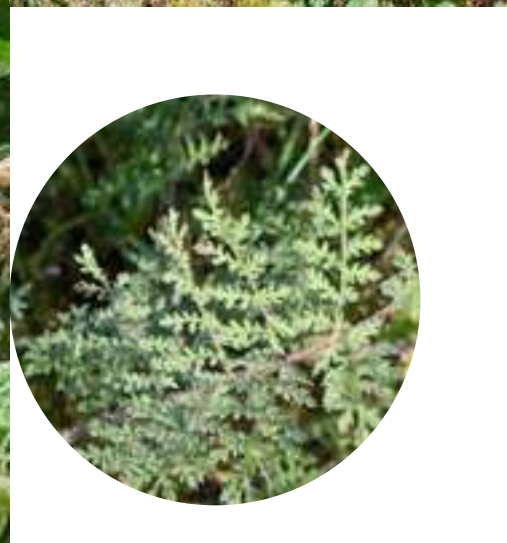
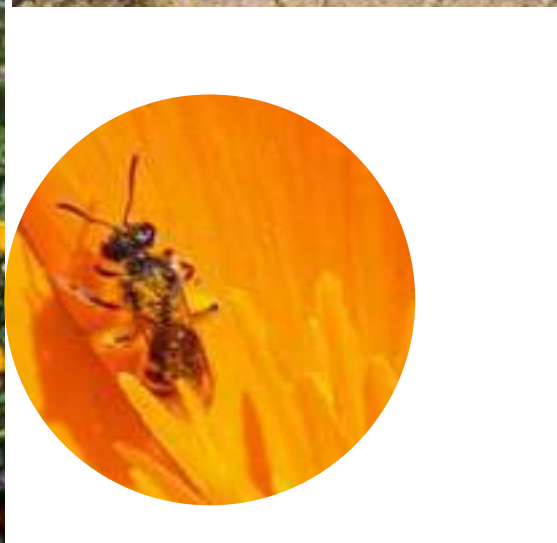
Botanical name	Common Name	Plant Family	Height x Spread	Wildlife Supported	# Of Lepidoptera	Seasonality	Bloom Color/ Season	Maintenance	Special Notes	Drainage	Sun Exposure
<i>Frangula californica</i>	Coffeeberry	Nyctaginaceae	3-15'x 5-15'	Bats, Butterflies, Caterpillars, Birds	33	Evergreen	Green, Cream, White Sp/Su	Tolerates pruning well. Prune to shape. Remove dead branches and dried fruit for a neater appearance.	Will grow more quickly in full sun and stay more compact under oaks. For a more compact size, consider cultivar. E. CF.	Variable	FS/PS
<i>Clinopodium Chandleri</i>	San Diego Yerba Buena	Lamiaceae	2'x3'	Caterpillars, Butterflies	1	Evergreen	White Sp/Su	Prune to shape and for use in teas.	Endangered. Endemic to Peninsular Range of Southern California and Baja. WOCULS Low. Great under Oaks. CF. E.	Fast	FS/PS
<i>Symphoricarpos mollis</i>	Creeping Snow-berry	Caprifoliaceae	1-2'x3-4'	Bats, Bees, Birds, Butterflies, Caterpillars, Hummingbirds	28	Wi Deciduous	Pink Sp/Su	Pull up rhizomes and lightly prune to control spread.	CF. Berries mildly toxic to humans.	Variable	PS



Botanical name	Common Name	Plant Family	Height x Spread	Wildlife Supported	# Of Lepidoptera	Seasonality	Bloom Color/ Season	Maintenance	Special Notes	Water Usage	Sun Exposure
<i>Salvia leucophylla</i> 'Bee's Bliss'	Bee's Bliss Purple Sage	Lamiaceae	1-2'x3'	Hummingbirds, Bees, Butterflies	N/A	Evergreen	Lavender Sp	Can be pinched back or pruned to maintain size and shape.	Plant with other Salvias, Ceanothus, Toyon, Buckwheats, and Manzanitas. Pleasant scent. LA	L	FS/PS
<i>Arctostaphylos</i> 'Pacific Mist'	Pacific Mist Manzanita	Ericaceae	1-2'x5-8'	Birds, Butterflies, Wasps, Bats, Bees, Caterpillars	N/A	Evergreen	White Wi	Very low Maintenance. Prune to shape as desired. Tip pruning will encourage more dense structure.	Selection from Rancho Santa Ana. Rap, LAid growth. Tolerates heatl. CF	L, M	FS/PS
<i>Arctostaphylos</i> 'Point Reyes'	Point Reyes Manzanita	Ericaceae	1'x12'	Birds, Butterflies, Wasps, Bats, Bees, Caterpillars	N/A	Evergreen	Pink Sp	Very low Maintenance. Prune to shape as desired. Tip pruning will encourage more dense structure.	Introduced by Rancho Santa Ana Botanic Garden. CF. LA	L, M	FS/PS/FS



Botanical name	Common Name	Plant Family	Height x Spread	Wildlife Supported	# Of Lepidoptera	Seasonality	Bloom Color/ Season	Maintenance	Special Notes	Water Usage	Sun Exposure
<i>Monardella linoides</i>	Willow Monardella	Lamiaceae	1-2'x2'	Hummingbirds, Bees, Butterflies, Birds, Caterpillars	N/A	Evergreen	Lavender, Pink, White Su	Can be pinched back or pruned to maintain size and shape.	Stunning flowers attract a lot of wildlife. Very pleasant mint taste and fragrance. Makes excellent tea. Plant along paths with other low growing groundcovers. CF.	VL, L	VL, FS
<i>Ceanothus merittimus</i> 'Popcorn'	Popcorn Ceanothus	Rhamnaceae	1-3'x2-5'	Birds, Butterflies, Bats, Bees, Caterpillars	N/A	Evergreen	White Sp	Very low Maintenance. Prune to shape as desired. Tip pruning will encourage more dense structure.	Selection from a garden, introduced by UC Davis. Pleasant smelling. Deer resistant, CF	L	FS/PS
<i>Ribes Aureum</i>	Golden Currant	Grossulariaceae	3-10'x3-10'	Hummingbirds, Birds, Bees, Caterpillars, Butterflies.	84	Wi Deciduous	Cream, Red, Yellow Wi/Sp	Remove unwanted suckers to contain spread. Tip prune for compact shape. Prune to desired shape.	Plant at edge of canopy. Tolerates full sun. Susceptible to rust. E.	VL, L	FS/PS



Botanical name	Common Name	Plant Family	Height x Spread	Wildlife Supported	# Of Lepidoptera	Seasonality	Bloom Color/ Season	Maintenance	Special Notes
<i>Antirrhinum coulterianum</i>	Coulter's Snapdragon	Plantaginaceae	5-59"	Bats, Bees, Hummingbirds, Butterflies, Caterpillars	10	Annual	White Sp	May pull dead plants and use as mulch.	Self seeds. Addition of biochar over sown seeds greatly improves germination.
<i>Camissoniopsis bistorta</i>	California Sun Cup	Onagraceae	2-3'x3'	Bats, Butterflies, Caterpillars	4	Annual	Yellow, Red Sp/Su	May pull dead plants and use as mulch.	Self seeds. If planted before winter rains, no additional irrigation required. CF
<i>Clarkia unguiculata</i>	Elegant Clarkia	Onagraceae	3'x3'	Bats, Bees, Butterflies, Caterpillars	5	Annual	Pink, Red Su/Fa	May pull dead plants and use as mulch.	Self Seeds. Tolerates shade. Good for Hydrozone 2. CF
<i>Eschscholzia californica</i>	California Poppy	Papaveraceae	2-24"x1-2'	Bats, Bees, Butterflies, Caterpillars, Birds	7	Annual, Perennial	Orange Year round	In many parts of Southern California, may be a perennial. You may pull plants or cut to the ground and allow to regrow. Plants from last season will be the first to bloom.	Medicinal use-stress, anxiety, sleep. Cultural use-dyes and paints. Readily self seeds. CF
<i>Phacelia tanacetifolia</i>	Lacy Phacelia	Boraginaceae	2-4'x2'	Bats, Bees, Butterflies, Caterpillars	9	Annual	Blue, Purple, Lavender Sp	Pull dead plants and use as mulch.	Vigorously self seeds. Dead stems can cling to pets.

Healing Through Nourishing



While this overall palette is geared towards healing and nourishing the earth, flora and fauna, it is important to also sustain ourselves. The plants in this grouping are sectioned into 2 parts; plants primarily for humans, and plants that will feed both humans and fauna. Here we have the traditional crop plants such as fruit trees and shrubs, and annual vegetables and fruit and herbs, and native plants that will not only attract pollinators and other beneficial insects while offering a food source to humans, birds, and mammals.

For fruit trees and shrubs-follow the general soil recommendations but add compost and worm castings between the cardboard and mulch. 1-2 times per year, refresh compost and worm castings, and fertilize with an organic time release fertilizer appropriate for the fruit type.

For fruiting crop plants: it is important to thin fruit early on. This will increase the longevity of your plant and also give better results with the yield. Its not just about quantity, It's about quality.

Annuals can be grown either in the ground or in raised beds. I recommend raised beds for ease of management and to deter our fur babies from disturbing the plants. Keep seeds and seedlings moist, then decrease irrigation as the plant grows. Do not allow mature plants to completely dry out. Prepare the initial bed with rich organic soil, a small amount of balanced fertilizer, and top with compost and mulch. Always start with seeds when possible. In Encino, you may start cool season crops in the fall when the soil temperature has dropped. For warm season crops, you may start seeds any time Soil temps are 65 or warmer, or you can start indoors earlier. If there is a chance of frost or cold temperatures, you may put a cloche over seedlings to protect them. When there's weather is to be over 90, you may use a light shade cloth.



This is the only area that needs supplemental irrigation. Set up berms around fruit trees, first berm 1 ft from root ball and second to the final size of the tree or shrub. Make sure to keep mulch and compost away from the crown. Use a soaker hose or drip irrigation. For annuals, use drip tape or micro line tubing with 6-12 inch emitters in rows, alternating where the emitter lies with each row for maximum coverage. For seed starts you may hand use micro spray emitters in combination with drip irrigation. For containers, you may hand water or use micro sprayers designed for containers. Make sure to practice crop rotation. Do not allow plants from the same genus to occupy the same bed but once every 3-4 years. Give beds a rest every 4-7 years. Plant cover crops or heavily mulch in unused beds.

This is the perfect area to install an in-situ composting system. This will attract worms, who will then carry nutrients throughout the garden as well as aerate the soil. You can fill with green "waste" trimmings, spoiled fruit and vegetables, and peels/rinds that are not suitable to save for stock. This is also a good way to use spent toilet paper rolls, junk mail, pieces of cardboard too small to use in sheet mulching, dried leaves, etc. Have an equal ratio of green to brown materials and add Pumice or other gritty material. You can set up small in situ containers throughout the garden, like in the middle of an annual bed or between trees and shrubs. For native plants- I recommend hand watering. Alternatively, you can set up a micro spray or rotary irrigation system. Use the native annuals listed in the healing and aquatic section as companion plants and cover crops in between plants and plantings.



Dorsett Golden Apple: Bahamas



Anna's apple: Israel



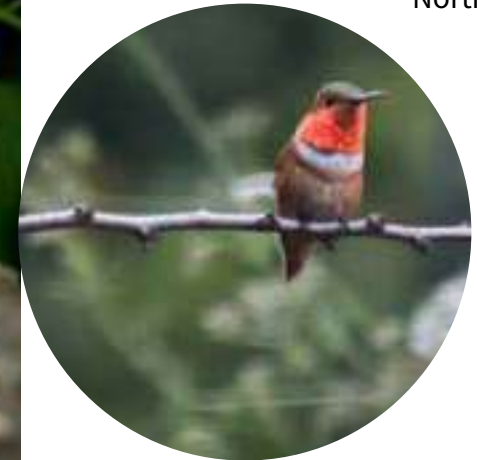
Southern Highbush Blueberry: North America



Southern Highbush Blueberry: North America



Katy Apricot: France



Botanical name	Common Name	Plant Family	Height x Spread	Seasonality	Bloom Color/Season	Harvest	Chill Hours	Maintenance	Special Notes	Pests & Diseases	Water Needs	Sun Exposure
<i>Malus domestica</i> 'Dorsett Golden'	Dorsett Golden Apple	Rosaceae	18-20'	Wi Deciduous	Whits Jan-Mar	Mid-late June	100	Prune in late fall after harvest time. Wait to prune until mature and is bearing fruit. Prune any damaged branches when tree goes into dormancy.	Semi-dwarf . Cross Pollinates with Anna's Apple. Fertilize in spring before new growth appears. Early harvest. Resistance: Verticillium	Armillaria, Brown Rot, Canker, Crown Rot ; Aphids, Beetle Borers, Coddling Moths, Psyllid.	Keep moist.	6-8
<i>Malus domestica</i> 'Anna's'	Anna's Apple	Rosaceae	15-30'	Deciduous	White Sp	July	200	Prune to maintain desired size and shape in the winter while tree is growing. After it reaches its desired height, switch to summer pruning.	Semi-dwarf. Cross Pollinates with Dorsett Golden or Einshemer.	Aphids, spider mites, apple scab, fire blite.	Regular	6-8
<i>Vaccinum x 'Misty'</i>	Misty Blueberry	Ericaceae	4'-6'	Evergreen	Pink, white Sp	When fully blue with a slight whitish coating	300	Prefers acidic soil. Fertilize in early spring. Remove dead or non vigorous wood in the winter then Remove damaged, broken and diseased wood last.	Has outstanding landscape characteristics with its striking hot pink buds and bushy, upright growth habit. Self pollinating but does better with cross. CF	Aphids, Blueberry Maggot, powdery mildew.	Keep moist	FS
<i>Vaccinum x 'O'neal'</i>	O'Neal Blueberry	Ericaceae	5'x5'	Deciduous	White Sp	June-July	200-300	Prefers acidic soil. In late winter, prune-cut any dead branches. After harvest remove non fruit bearing branches. Fertilize in early spring.	Foliage is attractive gray-green in summer accented with red stems and branches. Self pollinating but does better with cross. CF	N/A. May protect fruit from birds with fine mesh bags or netting.	Keep moist	PS/FS
<i>Prunus 'Katy'</i>	Katy Apricot	Rosaceae	15-18'	Wi Deciduous	White Sp	May-June	200-300	Prune before the weather gets cold and damp, late summer to fall. Prune to shape. Remove crossing branches.	Semi dwarf. Early harvest. Thin out young fruit when they are about the size of a nickel. Self Fruit-ing	Brown Rot, Canker, Crown Rot, Gummosis and Aphids, Beetle Borers, Scales, Thrip	2-3x/ week-1/ week	FS



Cara Cara Orange: Venezuela



Meyer Lemon: China



Pomegranate: Iran to Himalayas



Fuerte Avocado: Mexico



Fuerte Avocado: Mexico

Botanical name	Common Name	Plant Family	Height x Spread	Seasonality	Bloom Color/Season	Harvest	Chill Hours	Maintenance	Special Notes	Pests & Diseases	Water Needs	Sun Exposure
<i>Citrus x sinensis</i> 'Cara Cara'	Orange	Rutaceae	20'x10'	Evergreen	White Sp	Wi-Sp	Frost sensitive <30	Prune to maintain growth in early spring. Remove suckers from lower on the trunk. Root prune or up-pot every 2-3 years.	Self Pollinating. 20% more vitamin C and 30% more vitamin A than other oranges. Good source of lycopene, alpha and beta-carotene, activates processes by which body produces antioxidants. CF	Aphids, scales, and spider mite Citrus canker or greening. Citrus psyllid.	Keep moist but not soggy.	FS
<i>Citrus x 'Meyer'</i>	Meyer Lemon	Rutaceae	8-15'x 8-15'	Evergreen	White, purple Fa/Sp	Nov-March	Frost sensitive <20	Prune end of the autumn to beginning of the winter, but if there isn't a lot of fruits better after the fruits season. Prune to control shape and remove suckers.	Fertilize 3x/year. Re-pot every 2-3 years if growing in a container. CF	Aphids, mites, borer Citrus Psyllid	Keep moist but not soggy.	FS
<i>Punica granatum</i>	Pomegranate	Punicaceae	<15'x<15'	Deciduous	Orange, pink, red Sp, Su	Fall	Mild frost tolerant.	PRune before winter.	Resistance: Root Rot, Armillaria.	chlorosis, sooty mold, white fly.		FS
<i>Persea americana</i> 'Fuerte'	Fuerte Avocado	Lauraceae	40'x 25-35'	Evergreen	Yellow Wi/Sp	Fall-Spring	Frost Sensitive	Prune after each harvest, before or after the rainy season but before it gets too hot that fresh cuts will burn.	Cross Pollinates with Reed Avocado. Self Mulching. When young, Fertilize once a year until tree builds up enough mulch that it feeds itself.	Root rot, verticillium, invasive shot hole borer, aphids, scales, thrip.	Deep but infrequent	6-8
<i>Persea americana</i> 'Reed'	Reed Avocado	Lauraceae	40'x 25-35'	Evergreen	Yellow Wi/Sp	Se-FA	Frost Sensitive	Prune after each harvest, before or after the rainy season but before it gets too hot that fresh cuts will burn.	Cross Pollinates with Fuerte Avocado. Self Mulching. When young, Fertilize once a year until tree builds up enough mulch that it feeds itself.	Root rot, verticillium, invasive shot hole borer, aphids, scales, thrip.	Deep but infrequent	6-8



Botanical name	Common Name	Plant Family	Height x Spread	Days to Germination	Days to Maturity	Thin to/ Final Spacing	Container	Maintenance	Special Notes	Water Needs	Sun Exposure
<i>Cucurbita pepo</i>	Spaghetti Squash	Cucurbitaceae	4-10'x12-18"	3-10+	88+	≥12" apart	Yes, but do not recommend.	Harvest when skin sounds dull and doesn't yield to pressure.	Succession plant every 30 days. Resistant to powdery mildew. Can be grown over trellis.	1-2"/week	FS
<i>Solanum melongena</i>	Black Beauty Eggplant	Solanaceae	14-18"x2-3'	3-10+	75+	≥2" apart, at least 24" apart	Yes, 20"	Harvest when eggplant is deep purple, smaller and more tender.	Can be grown year round. Provide minor support.	Regular	FS
<i>Cucumis sativus</i> 'Lemon'	Lemon Cucumber	Cucurbitaceae	2-3'x6-8"	3-10+	65+	≥1" apart, ≥6" apart	Yes, Large	Harvest when skin is still thin. Tough skin can be bitter. Does not need to be peeled.	Good for Snacking. Sweet and tender. Succession plant every 21 days.	1"/week	FS
<i>Phaseolus vulgaris</i>	Purple Kanti Pole Beans	Fabaceae	18"x6-9'	3-10+	50+	≥5" apart	Yes, 10"	Harvest often. For fresh beans, harvest when seeds have not fully formed and pod is still soft. For dried, allow beans to fully mature on plant. If you keep harvesting, plant will keep producing.	Allow to climb structures. Fresh, shelled, and dried. Good for snacking. Train up a pergola, arch, trellis, etc. Succession plant 10 days.	1-2"/week	FS
<i>Solanum lycopersicum</i>	San Marzano Tomato	Solanaceae	2-3'x3-7.5'	3-10+	65+	≥2" apart, ≥24" apart	Yes, 20"	Requires staking. Prune suckers when plant is 2-3' Harvest when fruit are red and have a slight give to the flesh.	Semi-determinate. Good for canning. Best from transplant. Watch for tomato hornworm, aphids, scales, spider mites;.	Deeply every 3-7 days	6-8
<i>Capsicum annuum</i>	Poblano Pepper	Solanaceae	1-2'x1.5-2'	10-20+	70+	≥2" apart, ≥12" apart	Yes, 20"	Harvest often to encourage more production. Unripe (green) peppers will be more mild, while ripe (red) peppers will be hotter.	Best from transplant.	1"/week	FS



<i>Botanical name</i>	Common Name	Plant Family	Height x Spread	Days to Germination	Days to Maturity	Thin to/ Final Spacing	Container	Maintenance	Special Notes	Water Needs	Sun Exposure
<i>Brassica oleracea</i>	Red Russian Kale	Brassicaceae	24"x24"	3-10+	65+	≥2" apart	Yes	Harvest any point the leaves are worth eating.	Can be grown in the shade during warm months. Use shade cloth to protect from heat. Aphids, Whiteflies.	Regular	FS
<i>Allium cepa</i> 'Walla Walla'	Walla Walla Sweet Onion	Amaryllidaceae	18-24"x 5-7.5'	7-21+	140+	≥2" apart, ≥5" apart	Yes, 20"	Harvest when tops brown and fall over.	Popular, juice sweet onion. Versatile.	1"/ week	FS
<i>Solanum tuberosum</i>	Red Potato	Solanaceae	30-36"x36"	10-20+	90+	≥12" apart	Yes, 20"	As plants grow, continue to pull up enough soil around the stems to keep them covered with at least 6" of soil Harvest 2-3 weeks after flowers fade.	Plant potatoes during the cooler times of the year, starting in the fall and planting well into summer. Visit UC-IPM for information on pests and diseases.	Regular	6-8
<i>Brassica oleracea</i> var. <i>botrytis</i>	Snowball Cauliflower	Brassicaceae	12"x24"	5-15+	60+	≥2" apart, ≥24" apart	Yes, 20"	Harvest at any desirable size.	Succession plant every 21 days. Transplant best. Aphids, Cabbage moths, slugs and snails, cabbage worms.	Evenly moist but not overly wet.	FS
<i>Daucus carota</i> var. <i>sativus</i>	Cosmic Purple Carrots	Apiaceae	2-4"x 4-8"	10-21+	60+	≥2" apart	Yes, 10"	Harvest at any stage they are worth eating. Important to thin carrots.	Can be grown year round. Succession plant every 21 days. Use shade cloth for starting seeds in warmer climate.	Regular	6+



Botanical name	Common Name	Plant Family	Height x Spread	Days to Germination	Seasonality	Thin to/ Final Spacing	Container	Maintenance	Special Notes	Water Needs	Sun Exposure
<i>Lavandula</i> 'Goodwyn Creek Grey'	Lavender 'Goodwyn Creek Grey'	Lamiaceae	2-3'x2-3'	Taken from cuttings	Evergreen	NA	Yes	Trim flower heads after blooming to prevent woody stems and to encourage more blooming. Do not cut into old wood.	Very strong lavender scent. Striking grey foliage.	Summer dry	FS/PS
<i>Thymus vulgaris</i>	French Thyme	Lamiaceae	6-12"x6-12"	14-21	Evergreen	12"	Yes	Harvest as desired. Low maintenance.	Pink, lavender, white flowers in Sp/su. Thrives in poor soil conditions.	Allow to dry completely between water	6-8
<i>Melissa officinalis</i>	Lemon Balm	Lamiaceae	12-18"x18-24"	7-14+	Short lived perennial.	≥6" apart, ≥12" apart	Yes 10"	Best as transplant. Harvest individual leaves or to 2". cut back before flowering to increase foliage.	White and pale yellow flowers in Su.	Do not over-water. Allow soil to dry 2"	FS/PS
<i>Majorana hortensis</i>	Marjoram	Lamiaceae	6-12"x12-24"	7-14+	Wi semi-deciduous	≥2" apart, ≥6" apart	Yes 10"	Best as transplant. Harvest to 2" above base. For best flavor, harvest before flowering. Do not allow to seed. Divide every few years to restrict spread.	Warm season herb. Use fresh or dried. Culinary and medicinal. Aphids, spider mites, botrytis, powdery mildew, rust, root rot	Allow soil to dry between waterings.	FS
<i>Origanum heracleoticum</i>	Greek Oregano	Lamiaceae	12-18"	10-21	Evergreen	8-10"	Yes	Harvest as needed after plant reaches 4-5". If plant becomes too woody, cut back to ground to rejuvenate. Pinch back regularly.	My favorite Oregano. Very robust flavor with a slight, peppery kick. Spider mites, aphids, root rot.	1"/week tolerates drought.	FS
<i>Ocimum basilicum</i>	Basil Variety	Lamiaceae	12"x18"	3-10+	Annual	≥3" apart, ≥12" apart	Yes	Low maintenance. Harvest as needed after plant reaches 4-5". Pinch back regularly. Plant becomes woody if allowed to flower.	Succession plant every 14 days if you use a lot of basil. Can be grown as perennial.	1-1.5"/week	FS



Umbellularia californica
 Medicine-bug repellent, headaches, household cleaner and disinfectant, poison oak, colds, coughs, sore throats
 Food- bay leaf seasoning, roasted bay nuts.
 Cultural- furniture, water proofing)
 Collect-Leaf; all seasons; fruit: Fa (purplish-brownish when ripe.



Sambucus mexicana
 Medicine- colds, coughs, sore throats, fever, wounds.
 Food-both berries and flowers can be used in drinks, jams, and baked goods. Avoid consuming raw fruit.
 Cultural-floral arrangements, hunting tools, musical instruments
 Collect- flower, berry: su



Rhus ovata

Food- berries: fresh, dried, ground.

Collect-berries: summer



Botanical name	Common Name	Plant Family	Height x Spread	Wildlife Supported	# Of Lepidoptera	Seasonality	Bloom Color/ Season	Maintenance	Special Notes	Water Needs	Sun Exposure
<i>Umbellularia californica</i>	California Bay Laurel	Lauraceae	6-80'x 3-30'	Butterflies, Caterpillars, Birds,	4	Evergreen	Yellow, green, cream white Sp	Prune to shape. Can grow in a container, topiary, tree, and hedge.	Pleasant scent Stronger than commercial (sweet) bay for cooking. Susceptible to beetle borers and invasive shot hole borer. CF	L/M	FS/PS
<i>Sambucus mexicana</i>	Blue Elderberry	Viburnaceae	20-30'x 20-30'	Bats, Bees, Birds, Butterflies, Caterpillars	23	W Deciduous	Yellow, purple, cream Sp/su	Very fast growing. Will grow faster/larger in the sun and with more water. Prune to shape when desired.	Caution: if eating the berries, strain out the seeds and use only the cooked blue berries of <i>Sambucus nigra</i> subspecies, <i>caerulea</i> in moderation, due to the hydrocyanic acid within the berry which can cause laxative effects.	L/M	FS/PS
<i>Claytonia perfoliata</i>	Rooreh	Montiaceae	1'x1'	Bats, Butterflies, Caterpillars	3	Annual Herb	White Wi/Sp	Fast growing. Trim leaves when large enough to eat.	All parts edible. High in vitamins A and C. Presence indicative of healthy woodland. Self seeds, or for stored seed-2 mos. stratification. CF	L/M/H	PS
<i>Ribes malvaceum</i>	Chaparral Current	Grassulariaceae	5-8'x5'	Bats, Bees, Birds, Butterflies, Caterpillars, Hummingbirds	79	Evergreen	Pink, White Wi/Sp	Prune during dry season or after fruiting. Avoid cutting old wood. Clear fallen fruit from paths.	Loves to grow near <i>Ceanothus</i> Sp. Cultivar 'Dancing Tassels.' Edible berries collect in summer.	VL/L	FS/PS
<i>Trichostema lanatum</i>	Woolly Bluecurls	Lamiaceae	5'x10'	Bees, Birds, Butterflies, Caterpillars	5	Evergreen	Blue, lavender, Pink Fa/Wi/Sp	Pinch vigorous plants for bushier shape. Do not cut back to old wood. Keep organic mulch away from root plant. Prefers inorganic.	Sweet, pungent scent. Good in teas on its own or mixed with other herbs in the Mint family, especially <i>Monardella</i> Sp. May be short lived.	VL/L	FS/PS
<i>Rhus ovata</i>	Sugar Bush	Anacardiaceae	7'x35'	Bats, Caterpillars, Butterflies, Bees, Birds	13	Evergreen	Pink, White Wi/Sp	Fast growing. Prune to desired shape. Can pinch back or hard prune.	Can be a street tree, shrub, or tall hedge. Very Gardener friendly, and will still look lush after severe droughts. E	VL/L	FS/PS



Stipa pulchra

Food- seeds
 Cultural- flower arrangements
 Collect-seeds; su



Arctostaphylos glauca

Medicine-poison oak, UTI
 Food-drinks, berries (raw or cooked),
 flowers, sugar, vinaigrette.
 Cultural-floral arrangements, uten-
 sils.
 Collect berry: late summer; flower:
 late winter, Sp; leaf all seasons.



Botanical name	Common Name	Plant Family	Height x Spread	Wildlife Supported	# Of Lepidoptera	Seasonality	Bloom Color/ Season	Maintenance	Special Notes	Water Needs	Sun Exposure
<i>Artemisia dracunculus</i>	Wild Tarragon	Asteraceae	4-5'x5'	Bats, Caterpillars, Butterflies, Birds	31	Evergreen	Cream, white, yellow Su/Fa	Cut back in spring. Harvest until mid-fall. Divide clumps every 3-4 years for a more robust plant.	Thrives in poor, dry soil. Propagate by seed or semi-hardwood cuttings in late summer.	L/M	FS
<i>Lonicera subspicata</i>	Southern Honeysuckle	Caprifoliaceae	8'x20'	Bats, Caterpillars, Butterflies, Birds	21	Evergreen	Cream, yellow Sp/Su	Do not prune new, young growth because that is where the flowers and fruit are borne. Remove older growth to shape and to stimulate growth of new stems.	Collect berries in summer. Companions with: <i>Arctostaphylos</i> , <i>Berberis</i> , <i>Ceanothus</i> , <i>Eriogonum</i> , <i>Quercus</i> , <i>Rhus</i> , <i>Ribes</i> , and <i>Salvia Sp</i> , and <i>Trichostema lanatum</i> , amongst others. Endemic.	L	FS/PS
<i>Vitis girdiana</i>	Desert Wild Grape	Vitaceae	10-50'x spreading	Bats, Caterpillars, Butterflies, Birds	32	Wi Deciduous	Green Sp	Fast growing. Can be held in check with regular pruning. Use as mounding groundcover or climbing up trellis or pergola.	Fall color. Does better than <i>Vitis californica</i> , California Wild Grape, in the hot inland setting.	L/M	FS/PS
<i>Stipa pulchra</i>	Purple Needlegrass	Poaceae	3'x2'	Butterflies, Caterpillars	4	Deciduous-semi-evergreen.	Red, Green, Purple, Cream Sp	Cut back after flowering to encourage new growth, but can also allow to go dormant.	State grass of California. Replaces Mexican Feather Grass. Walkable groundcover.	VL	FS
<i>Cucurbita foetidissima</i>	Buffalo Gourd, Wild Pumpkin	Cucurbitaceae	1'x spreading	Caterpillars, Butterflies	12	Annual herb	Yellow, orange Su	Prune away from undesired spaces. Mulch plant after harvest.	Grows very fast on little water from a massive underground tuber.	VL, L	FS
<i>Arctostaphylos glauca</i>	Bigberry Manzanita	Ericaceae	3-20'x 6-20'	Bats, Caterpillars, Butterflies, Birds, Bees	53	Evergreen	White, pink Sp/Wi	Nothing for first few years, if ever. Self pruning, but may prune small branches to open up shape and reveal structure. Clean shears between each cut (see note.)	Arctostaphylos suffer from branch die-back, which is a fungal pathogen that eventually kills the whole plant. Avoid over-watering. CF Cultivars available.	VL	FS

SUCCULENTS





Botanical name	Common Name	Plant Family	Height x Spread	Watering Needs	Summer Water Reduction (Y/N)	Soil Requirements	Bloom Color/ Season	Sun exp.	Maintainance
<i>Aloe mawii</i>	Khuzi	Aloeaceae (now Asphodeloideae)	4-7' x 4'	VL, Low	N	Well draining	Orange, Red Win	FS	Remove dead leaves and dried inflorescence.
<i>Crassula arborescens</i>	Silver Dollar Tree	Crassulaceae	4-5' x 4-5'	VL, Low	Y	Well draining	White Su	FS	Remove dead leaves and dried inflorescence.
<i>Dudleya brittonii</i>	Giant Chalk Dudleya	Crassulaceae	1' x 1-2'	VL, Low	Y	Well draining	Yellow March-Aug.	FS/PS	Leave dried Leaves for stability. Watch for mold



Botanical name	Common Name	Plant Family	Height x Spread	Watering Needs	Summer Water Reduction (Y/N)	Soil Requirements	Bloom Color/ Season	Sun exp.	Maintainance
<i>Aloe capitata</i>	Capitata Aloe	Aloaceae (now Asphodeloideae)	2-3' x 2-3'	Low	Y	Well draining	Yellow, orange Wi	FS/PS	Remove dead leaves and dried inflorescence.
<i>Dudleya lanceolata</i>	Lanceleaf Liveforever	Crassulaceae	4-8" x spreading	VL, Low	Y	Well draining	Orange, pink, red, yellow Sp/Su	FS/PS/S	Remove dried inflorescence. CF
<i>Aloe Ferox</i>	Cape Aloe	Aloaceae (now Asphodeloideae)	4-8" x spreading	VL, Low	Y	Well draining	Orange, pink, red, yellow Sp/Su	FS/PS	Remove dried inflorescence. CF



Botanical name	Common Name	Plant Family	Height x Spread	Watering Needs	Summer Water Reduction (Y/N)	Soil Requirements	Bloom Color/ Season	Sun exp.	Maintainance
<i>Aloe arborescens</i> 'Spineless'	Toothless Torch Aloe	Aloeaceae (now Asphodeloideae)	4-6' x s6-8'	Low	Y	Well draining	Red Fa/Wi	FS/PS	Remove dried leaves and inflorescence
<i>Aloe vera barbadensis</i> 'Miller'	Miller Aloe Vera	Aloeaceae (now Asphodeloideae)	3' x 2'	Low	N/A	Well draining	Red Wi/Sp	FS/PS	Medicinal. Remove dried inflorescence. CF
<i>Aloe plicatilis</i>	Fan Aloe	Aloeaceae (now Asphodeloideae)	4-8' x 4-6'	VL, Low	Y	Well draining	Red Wi/Sp	FS/PS	Remove dried leaves. FS/PS



Botanical name	Common Name	Plant Family	Height x Spread	Watering Needs	Summer Water Reduction (Y/N)	Soil Requirements	Bloom Color/ Season	Sun exp.	Maintainance
<i>Aloe greenii</i>	Icena	Aloeaceae (now Asphodeloideae)	1-2' x Spreading	Low	Y	Well draining	Pink Su/Fa	FS/PS/ LS	Remove dried inflorescence. LS FS/PS
<i>Grapsopatelum paraguayense</i>	Ghost Plant	Crassulaceae	8-12" x 2-3'	Low	N	Well draining	White, red Sp	FS/PS	Prune to shape. FS/PS

PLANT SCHEDULE

SYMBOL	CODE	BOTANICAL / COMMON NAME	SIZE	CONTAINER	PLANT FACTOR	QTY
FRUIT TREES						
	CIT IMP	Citrus x limon 'Improved Meyer' / Improved Meyer Lemon	5 gal.	Pot	MODERATE	2
	CIT CAR	Citrus x sinensis 'Cara Cara' / Cara Cara Pink Navel Orange	5 gal.	Pot	MODERATE, .5	3
	PER FU2	Persea americana 'Fuerte' / Fuerte Avocado	5 gal.	Pot	MODERATE	1
	PER REE	Persea americana 'Reed' / Reed Avocado	5 gal.	Pot	MODERATE, .5	1
	PRU RRR	Prunus x 'Katy' / Katy Apricot	5 gal.	Pot	MODERATE	3
NATIVE TREES						
	ARC GL2	Arctostaphylos glauca / Bigberry Manzanita	1 gal.	Pot	VERY LOW, .1	3
	JUG CAL	Juglans californica / Southern California Black Walnut	5 gal.	Pot	LOW	2
	PRU IL1	Prunus ilicifolia / Hollyleaf Cherry	1 gal.	Pot	VERY LOW	5
	PRU IL2	Prunus ilicifolia / Hollyleaf Cherry	1 gal.	Pot	VERY LOW	8
	QUE AGR	Quercus agrifolia / Coast Live Oak	15 gal.	Pot	VERY LOW, .1	2
	RHU OV2	Rhus ovata / Sugar Bush	1 gal.	Pot	VERY LOW	2
	UMB CA2	Umbellularia californica / Bay Laurel	1 gal.	Pot	LOW	3
ANNUAL WILDFLOWER						
	ACM RN3	Acmispon americanus / Birdsfoot Trefal	Seed		MODERATE	5
	LUP SU2	Lupinus succulentus / Arroyo Lupine	Seed		LOW	11
CONTAINER						
	ARC REY	Arctostaphylos uva-ursi 'Point Reyes' / Point Reyes Kinnikinnick	1 gal.		YES	6
	ARC MIS	Arctostaphylos x 'Pacific Mist' / Pacific Mist Manzanita	1 gal.	Pot	LOW	6
FRUITING SHRUBS						
	VAC MIS	Vaccinium x 'Misty' / Misty Blueberry	1 gal.	Pot	MODERATE	8
	VAC ONE	Vaccinium x 'O'Neal' / O'Neal Blueberry	1 gal.	Pot	MODERATE	8
HERBS						
	LAV CRE	Lavandula dentata 'Goodwin Creek Grey' / Goodwin Creek Grey Lavender	4"	Pot	LOW	3
	MEL OFF	Melissa officinalis / Lemon Balm	Seed		MODERATE	7
	OCI PUR	Ocimum basilicum 'Purpurascens' / Purple Basil	Seed		Unknown	8
	ORI HER	Origanum heracleoticum 'Greek Mountain' / Oregano	Seed		LOW	4
	ORI SWE	Origanum majorana / Sweet Marjoram	Seed		LOW	8
	THY FGF	Thymus vulgaris 'French' / French Common Thyme	Seed		LOW	19
NATIVE CONTAINER						
	ASA CA3	Asarum caudatum / Wild Ginger	---	Plug	HIGH	9
EDIBLE						
	ACH MIL	Achillea millefolium / Common Yarrow	flat		Low	12,692
	ASA CA2	Asarum caudatum / Wild Ginger	Plug		High	572 sf
	CLA MIN	Claytonia perfoliata / Miner's Lettuce	seed		YES	577
	CLI CH2	Clinopodium chandleri / San Miguel Savory	flat		Very Low	5,554
	FRA WOO	Fragaria vesca / Woodland Strawberry	Plug		Low	2,604 sf
	MON WD3	Monardella linoidea linoidea / Willow Mint	4"	Pot	Very Low	340 sf
	SAL COL	Salvia columbariae / Chia	seed		Very Low	205 sf
	SAL SP3	Salvia spathacea / Hummingbird Sage	Plug		Low	1,363
	STI PU2	Stipa pulchra / Purple Needle Grass	Plug		Very Low	3,217 sf
	VIT GI2	Vitis girdiana / Desert Wild Grape	4"	Pot	Low	384 sf

NATIVE SHRUBS

	ART DOU	Artemisia douglasiana / Mugwort	4"	Pot	MODERATE	12
	BAC SAL	Baccharis salicifolia / Mulefat	1 gal.	Pot	HIGH	3
	BER PIN	Berberis pinnata / California Barberry	4"	Pot	LOW	19
	CEA POP	Ceanothus maritimus 'Popcorn' / Popcorn Maritime Ceanothus	1 gal.	Pot	LOW	4
	CEA OL2	Ceanothus oliganthus / Hairy Ceanothus	1 gal.	Pot	VERY LOW	7
	CHL POM	Chloragalum pameridianum / Soap Plant	4"	Pot	VERY LOW	23
	CLA MI3	Claytonia perfoliata / Miner's Lettuce	Seed		MODERATE	5
	CLI CHA	Clinopodium chandleri / San Miguel Savory	4"	Pot	LOW	23
	COR RE5	Cornus sericea / Red Twig Dogwood	1 gal.	Pot	HIGH	1
	EPI HUM	Epilobium canum / California Fuchsia	4"	Pot	VERY LOW	26
	ERI CRA	Eriodictyon crassifolium / Thick-eaved Yerba Santa	4"	Pot	VERY LOW	5
	ERI TH2	Eriogonum fasciculatum 'Theodore Payne' / Theodore Payne California Buckwheat	4"	Pot	VERY LOW	44
	ERI SUL	Eriogonum umbellatum / Sulfurflower Buckwheat	4"	Pot	VERY LOW	20
	ERY CAR	Erythranthe cardinalis / Scarlet Monkeyflower	4"	Pot	MODERATE	22
	FRA WO2	Fragaria vesca / Woodland Strawberry	Plug		LOW	3
	FRA WO3	Fragaria vesca / Woodland Strawberry	Plug		LOW	20
	FRA CA3	Frangula californica / California Coffeeberry	1 gal.	Pot	LOW	20
	JUN ME2	Juncus mexicanus / Mexican Rush	Plug		MODERATE	5
	LON SUB	Lonicera subspicata / Southern Honeysuckle	4"	Pot	LOW	10
	MON WDT	Monardella linoidea linoidea / Willow Mint	4"	Pot	VERY LOW	25
	MON VI2	Monardella viminea / Willow Monardella	4"	Pot	LOW	15
	RIB GOL	Ribes aureum / Golden Currant	1 gal.	Pot	VERY LOW	17
	RIB CHA	Ribes malvaceum / Chaparral Currant	1 gal.	Pot	VERY LOW	17
	SAL API	Salvia apiana / White Sage	4"	Pot	VERY LOW	11
	SAL SP2	Salvia spathacea / Hummingbird Sage	Plug		LOW	43
	SAL BEE	Salvia x 'Bee's Bliss' / Bee's Bliss Sage	4"	Pot	LOW	19
	SIS BEL	Sisyrinchium bellum / Blue-eyed Grass	Plug		LOW	8
	STA ALI	Stachys albens / White Hedge Nettle	4"	Pot	MODERATE	25
	STI PUL	Stipa pulchra / Purple Needle Grass	4"	Pot	VERY LOW	56
	SYM MO2	Symphoricarpos mollis / Creeping Snowberry	4"	Pot	LOW	19
	TRI WOO	Trichostema lanatum / Woolly Blue Curlew	1 gal.	Pot	VERY LOW	26

SEASONAL FRUITS AND VEGGIES

	BRA SSP	Brassica oleracea acephala / Kale	4"	Transplant	MODERATE	5
	CAP BPL	Capsicum annuum 'Poblano' / Poblano Pepper	Seed		MODERATE	3
	CUC UIS	Cucumis sativus 'Lemon' / Lemon Cucumber	Seed		MODERATE	2
	CUC UUI	Cucurbita pepo pepo / Spaghetti Squash	Seed		MODERATE	1
	SOL PMK	Solanum lycopersicum 'Black Krim' / Black Krim Tomato	Seed		MODERATE	3
	SOL NZC	Solanum lycopersicum 'San Marzano' / San Marzano Tomato	Seed		MODERATE	3

SUCCULENTS

	ALO FER	Aloe ferox / Bitter Tree Aloe	15 gal.	Pot	LOW	8
	ALO GRE	Aloe greenii / Spotted Aloe	4"	Pot	LOW	3
	ALO MWI	Aloe mawii / Khuzi Aloe	1 gal.	Pot	LOW	3
	ALO PLI	Aloe plicatilis / Fan Aloe	2 gal.	Pot	LOW	3
	ALO VER	Aloe vera / Medicinal Aloe	4"	Pot	LOW	21
	DUD BRI	Dudleya brittonii / Giant Chalk Dudleya	1 gal.	Pot	VERY LOW	5
	DUD HAS	Dudleya virens hasselii / Catalina Island Live-Forever	4"	Pot	VERY LOW	3

VINE/ESPALIER

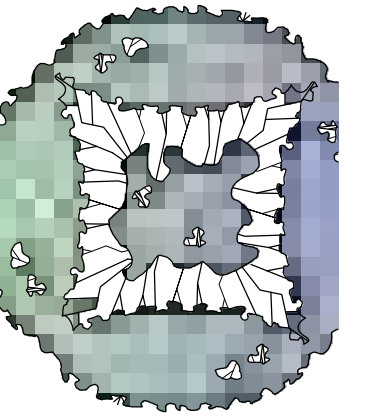
	MAL A19	Malus x domestica 'Anna' / Anna Apple	5 gal.	Pot	MODERATE	4
	MAL G24	Malus x domestica 'Dorsett Golden' / Dorsett Golden Apple	5 gal.	Pot	MODERATE	3

WATER FEATURE

	AQU FO3	Aquilegia formosa / Western Columbine	4"	Pot	MODERATE	30
--	---------	---------------------------------------	----	-----	----------	----

GROUND COVERS

	ACM RNP	Acmispon americanus / Birdsfoot Trefal	seed		Moderate	354 sf
	CHL PO2	Chloragalum pameridianum / Soap Plant	Plug		Very Low	99
	COR FI3	Corethrogyne flaginifolia 'Silver Carpet' / California Aster	Plug		Low	1,326
	ESC CAL	Eschscholzia californica / California Poppy	seed		Very Low	878 sf
	GRA PA2	Graptopetalum paraguayense / Ghost Plant	4"	Pot	Low	100 sf
	JUN ME3	Juncus mexicanus / Mexican Rush	flat		Moderate	749
	SAL BE2	Salvia x 'Bee's Bliss' / Bee's Bliss Sage	Plug		Low	213
	SIS BE2	Sisyrinchium bellum / Blue-eyed Grass	Plug		Low	3,594 sf
	SYM MOL	Symphoricarpos mollis / Creeping Snowberry	4"	Pot	Low	121 sf



NIKKI RINEHART

UCLA LANDSCAPE ARCHITECTURE PROGRAM LD5 SITE DESIGN

SISTERS OF SOCIAL SERVICES 4316 LANAI RD ENCINO, CA 91436

REVISION	DATE

Date: 05-22-20

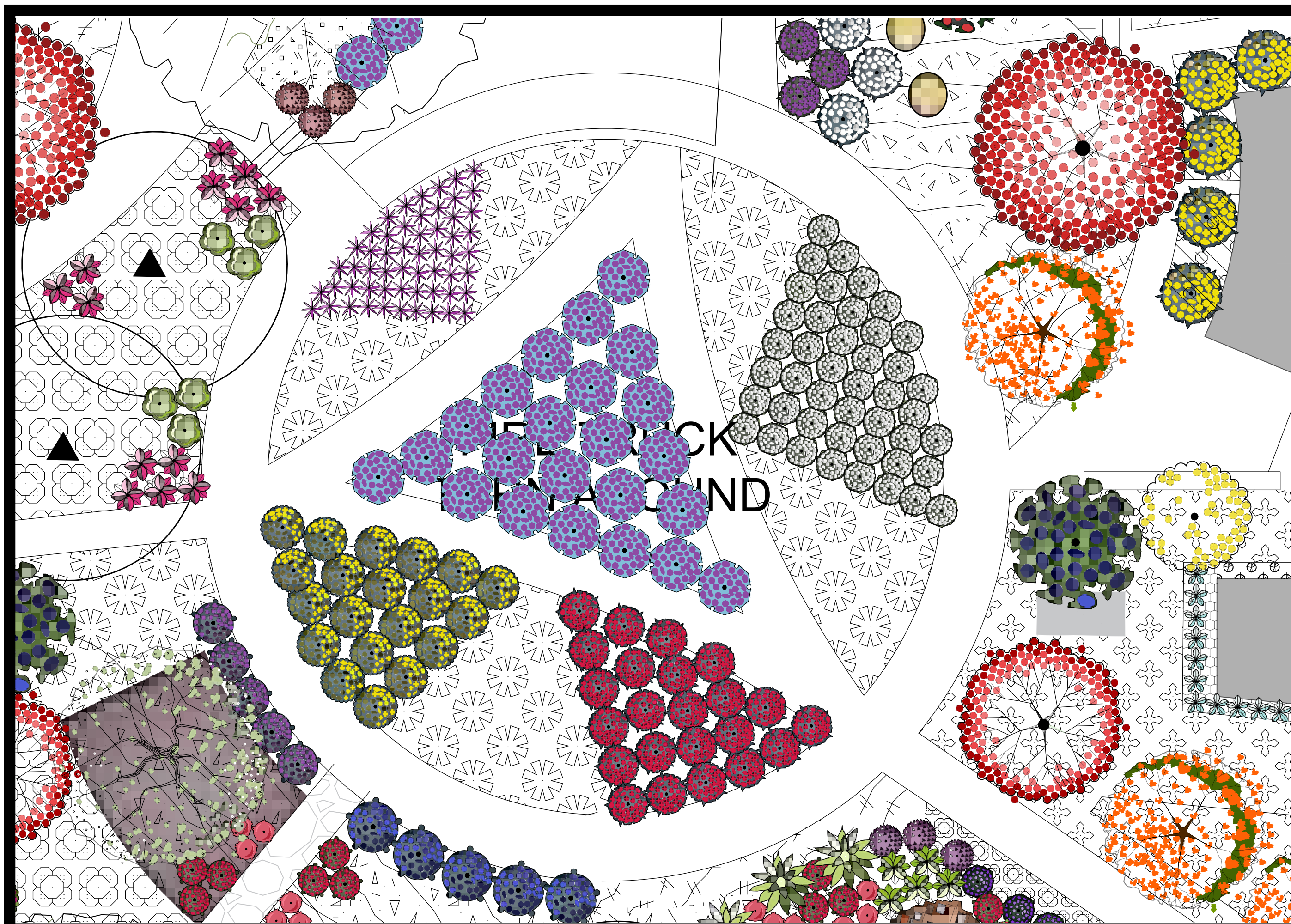
Scale: 1"=20'-0"

Drawn By: NR

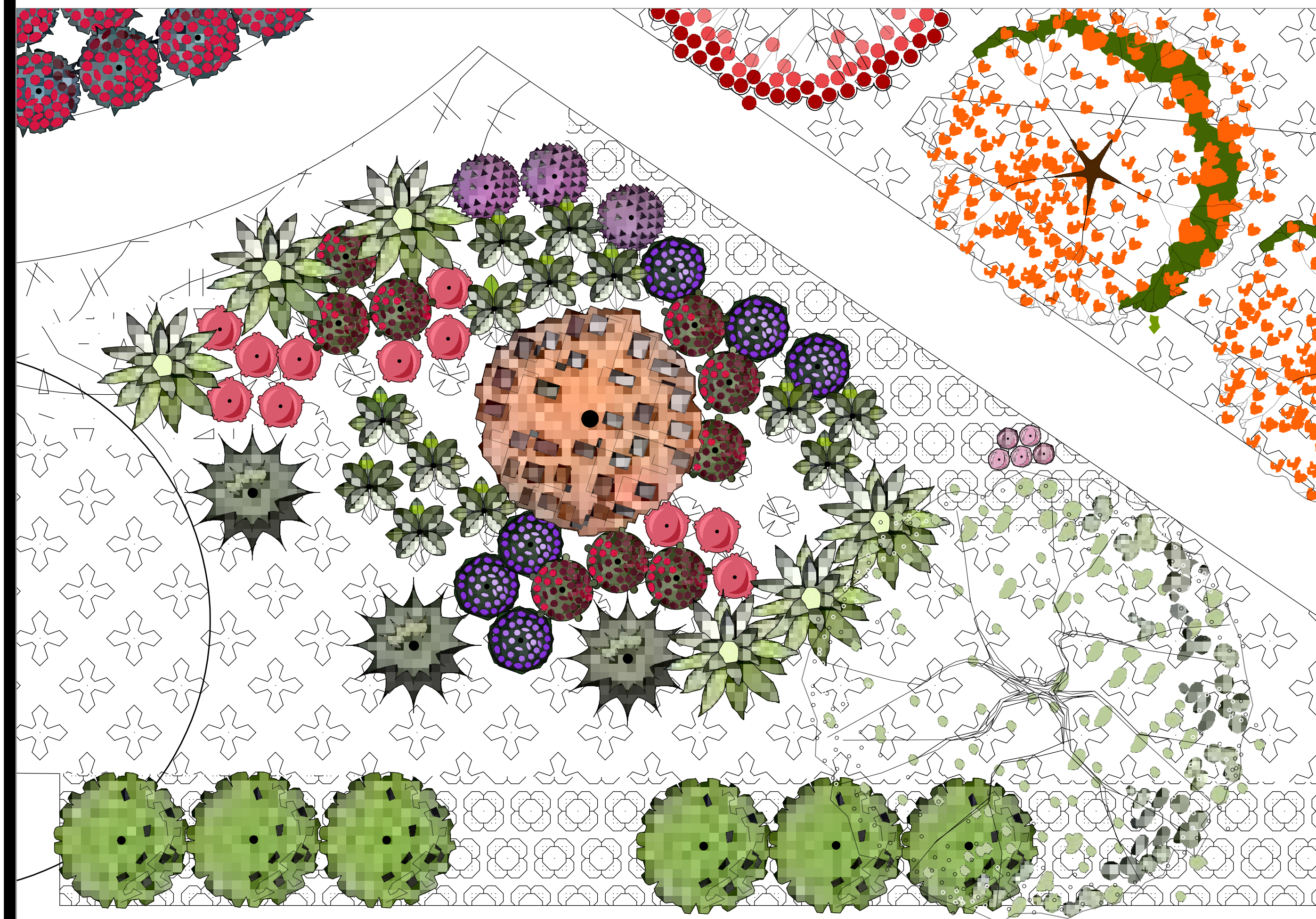
Sheet:

L-2

PLANT SCHEDULE



1 WELCOME CIRCLE
1/8" = 1'-0"



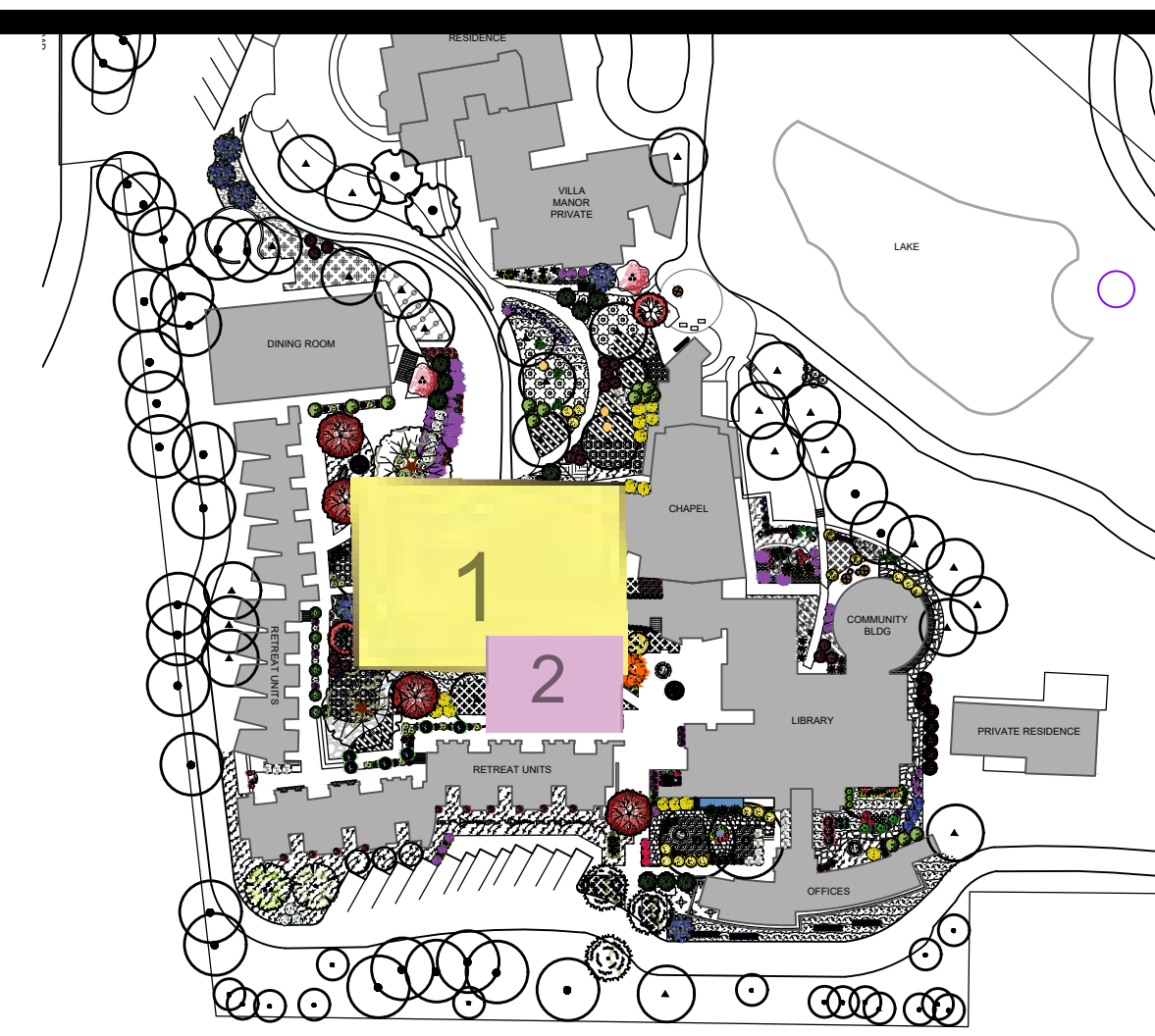
2 BIOSWALE
1/4" = 1'-0"

PLANT SCHEDULE WELCOME CIRCLE

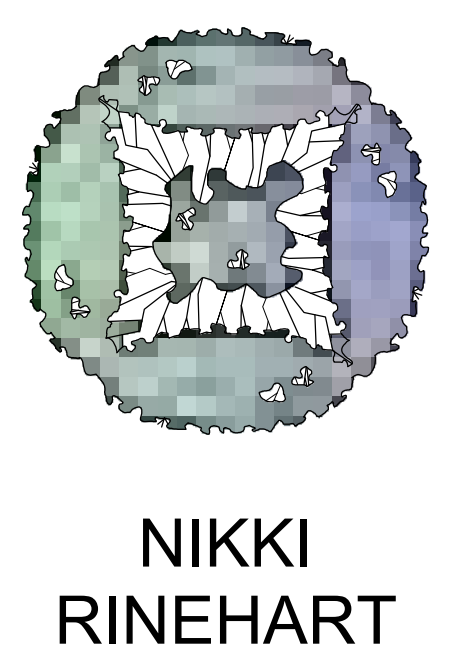
SYMBOL	CODE	BOTANICAL / COMMON NAME	SIZE	CONTAINER	PLANT FACTOR	QTY
FRUIT TREES						
	CIT IMP	Citrus x limon Improved Meyer / Improved Meyer Lemon	5 gal.	Pot	MODERATE	1
	PRU RRR	Prunus x Kary / Katy Apricot	5 gal.	Pot	MODERATE	2
NATIVE TREES						
	ARC GL2	Arctostaphylos glauca / Bigberry Manzanita	1 gal.	Pot	VERY LOW, 1	1
	JUG CAL	Juglans californica / Southern California Black Walnut	5 gal.	Pot	LOW	1
	PRU LI	Prunus ilicifolia / Hollyleaf Cherry	1 gal.	Pot	VERY LOW	1
ANNUAL WILDFLOWER						
	LUP SU2	Lupinus succulentus / Arroyo Lupine	Seed		LOW	2
FRUITING SHRUBS						
	VAC M15	Vaccinium x M15 / Misty Blueberry	1 gal.	Pot	MODERATE	5
	VAC ONE	Vaccinium x O'Neal / O'Neal Blueberry	1 gal.	Pot	MODERATE	5
NATIVE SHRUBS						
	AQU F03	Aquilegia formosa / Western Columbine	4"	Pot	MODERATE	7
	ART DOU	Artemisia douglasiana / Mugwort	4"	Pot	MODERATE	2
	BER PIN	Berberis pinnata / California Barberrry	4"	Pot	LOW	5
	CEA OL2	Ceanothus oliganthus / Hairy Ceanothus	1 gal.	Pot	VERY LOW	1
	CUI CHA	Clinopodium chandleri / San Miguel Savory	4"	Pot	LOW	6
	EPI HUM	Epilobium canum / California Fuchsia	4"	Pot	VERY LOW	23
	ERI TH2	Eriogonum fasciculatum Theodore Payne / Theodore Payne California Buckwheat	4"	Pot	VERY LOW	44
	ERI SUL	Eriogonum umbellatum / Sulfurflower Buckwheat	4"	Pot	VERY LOW	20
	ERY CAR	Erythranthe cardinalis / Scarlet Monkeyflower	4"	Pot	MODERATE	10
	MON WDT	Monardella lindleyi lindleyi / Willow Mint	4"	Pot	VERY LOW	3
	MON V12	Monardella viminea / Willow Monardella	4"	Pot	LOW	3
	SAL AP1	Salvia apiana / White Sage	4"	Pot	VERY LOW	3
	SAL SP2	Salvia spathacea / Hummingbird Sage	Plug		LOW	13
	SAL BEE	Salvia x Bee's Bliss / Bee's Bliss Sage	4"	Pot	LOW	9
	STA ALI	Stachys albens / White Hedge Nettle	4"	Pot	MODERATE	5
	STI PUL	Stipa pulchra / Purple Needle Grass	4"	Pot	VERY LOW	56
	TRI WOO	Trichostema lanatum / Woolly Blue Curl	1 gal.	Pot	VERY LOW	3
SUCCULENTS						
	ALO VER	Aloe vera / Medicinal Aloe	4"	Pot	LOW	11
GROUND COVERS						
	COR F13	Corethrogyne flaginifolia Silver Carpet / California Aster	Plug		Low	1,326
	GRA PA2	Gnaptalonum paraguayense / Ghost Plant	4"	Pot	Low	100 sf
	JUN ME3	Juncus mexicanus / Mexican Rush	flat		Moderate	304
	SAL BE2	Salvia x Bee's Bliss / Bee's Bliss Sage	Plug		Low	213
EDIBLE						
	ACH MIL	Achillea millefolium / Common Yarrow	flat		Low	1,063
	CLA MIN	Claytonia perfoliata / Miner's Lettuce	seed		YES	82
	CUI CH2	Clinopodium chandleri / San Miguel Savory	flat		Very Low	131
	FRA WOO	Fragaria vesca / Woodland Strawberry	Plug		Low	702 sf
	STI PU2	Stipa pulchra / Purple Needle Grass	Plug		Very Low	475 sf

PLANT SCHEDULE BIOSWALE

SYMBOL	CODE	BOTANICAL / COMMON NAME	SIZE	CONTAINER	PLANT FACTOR	QTY
FRUIT TREES						
	PRU RRR	Prunus x Kary / Katy Apricot	5 gal.	Pot	MODERATE	1
NATIVE TREES						
	JUG CAL	Juglans californica / Southern California Black Walnut	5 gal.	Pot	LOW	1
ANNUAL WILDFLOWER						
	ACM RN3	Acemison americanus / Birdsfoot Trefail	Seed		MODERATE	5
	LUP SU2	Lupinus succulentus / Arroyo Lupine	Seed		LOW	6
NATIVE SHRUBS						
	AQU F03	Aquilegia formosa / Western Columbine	4"	Pot	MODERATE	11
	ART DOU	Artemisia douglasiana / Mugwort	4"	Pot	MODERATE	6
	BAC SAL	Baccharis salicifolia / Mulefat	1 gal.	Pot	HIGH	3
	COR R55	Cornus sericea / Red Twig Dogwood	1 gal.	Pot	HIGH	1
	EPI HUM	Epilobium canum / California Fuchsia	4"	Pot	VERY LOW	3
	ERY CAR	Erythranthe cardinalis / Scarlet Monkeyflower	4"	Pot	MODERATE	9
	FRA CA3	Fragaria californica / California Coffeeberry	1 gal.	Pot	LOW	6
	MON V12	Monardella viminea / Willow Monardella	4"	Pot	LOW	3
	STA ALI	Stachys albens / White Hedge Nettle	4"	Pot	MODERATE	13
GROUND COVERS						
	ACM RN3	Acemison americanus / Birdsfoot Trefail	seed		Moderate	297 sf
	JUN ME3	Juncus mexicanus / Mexican Rush	flat		Moderate	445
	SIS BE2	Sisyrinchium bellum / Blue-eyed Grass	Plug		Low	885 sf
EDIBLE						
	ACH MIL	Achillea millefolium / Common Yarrow	flat		Low	295
	FRA WOO	Fragaria vesca / Woodland Strawberry	Plug		Low	457 sf



KEY MAP
1" = 80'



UCLA LANDSCAPE
ARCHITECTURE PROGRAM
LD5 SITE DESIGN

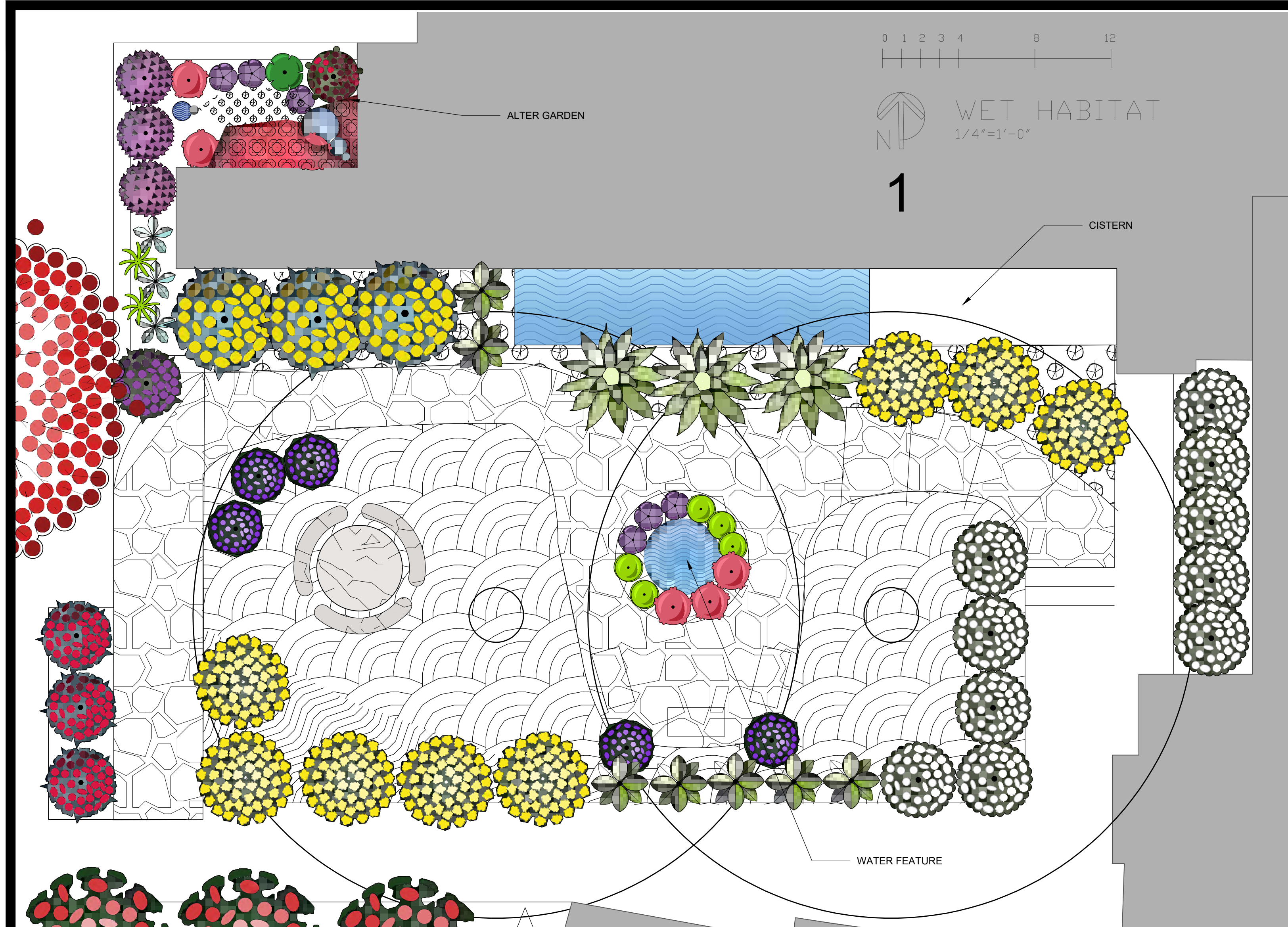
SISTERS OF SOCIAL SERVICES
4316 LANAI RD
ENCINO, CA 91436

REVISION	DATE	BY

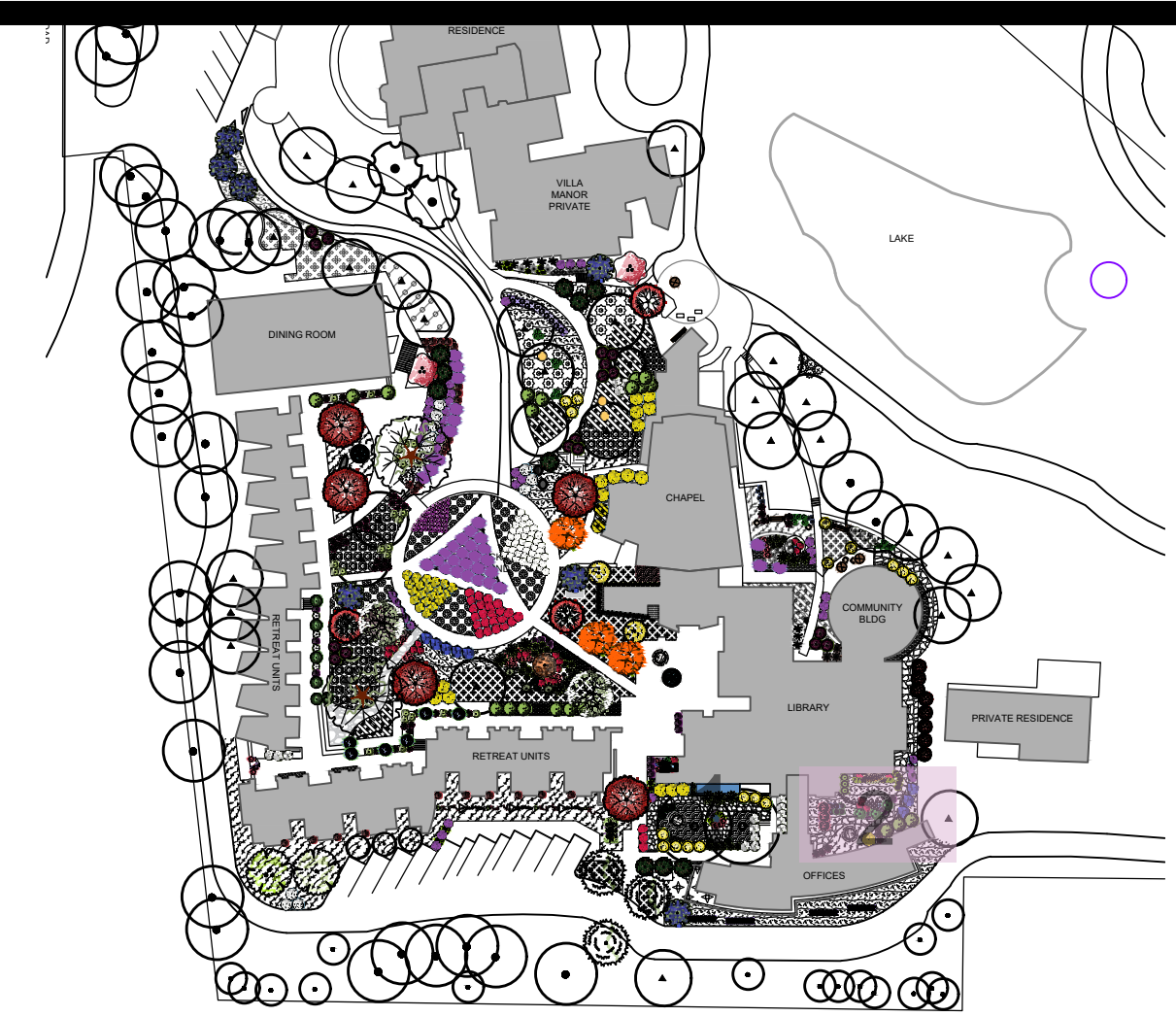
Date: 05-22-2025
Scale: AS SPECIFIED
Drawn By: NR
Sheet:

ENLARGEMENTS

L-3



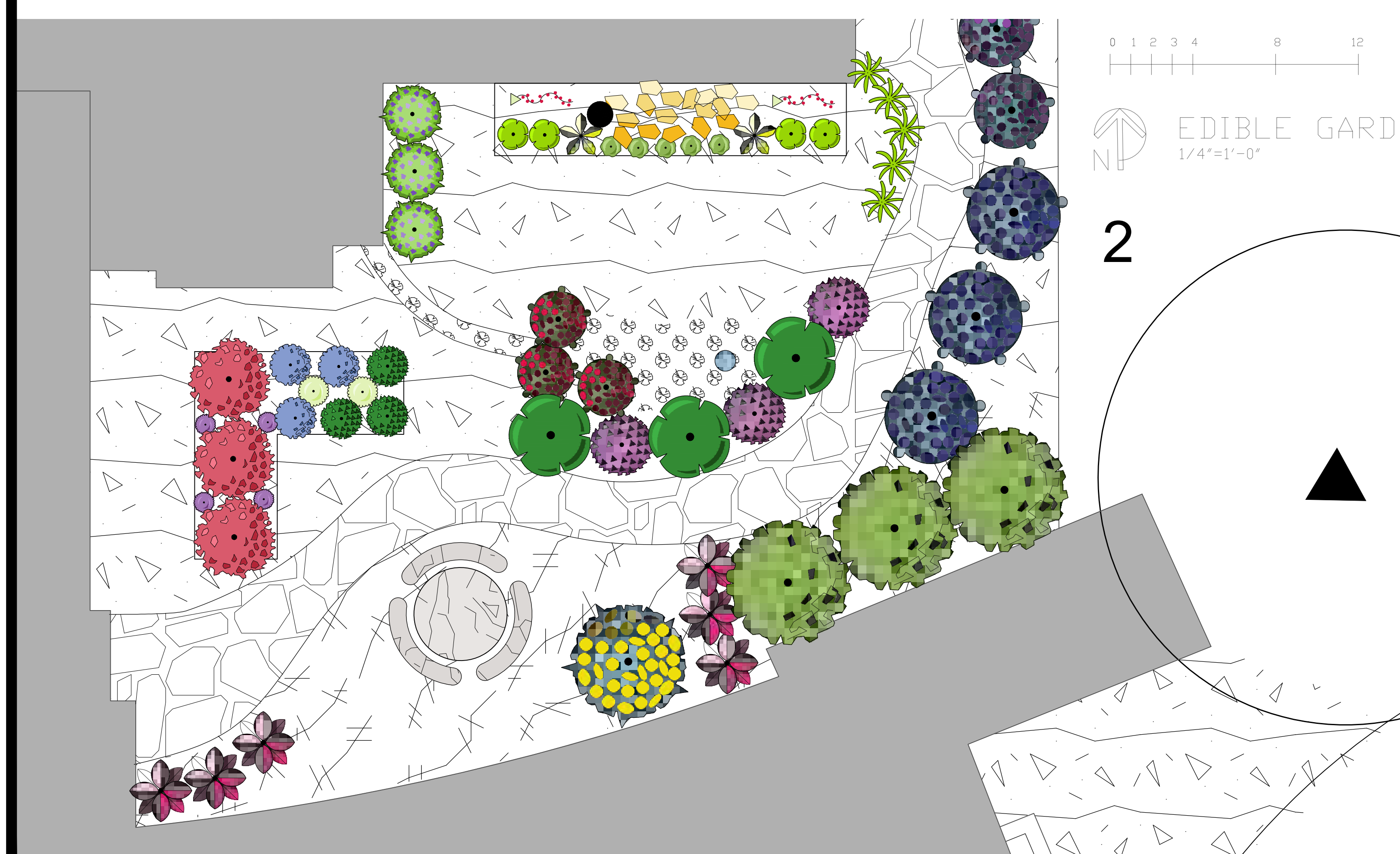
SYMBOL	CODE	BOTANICAL / COMMON NAME	SIZE	CONTAINER	PLANT FACTOR	QTY
ANNUAL WILDFLOWER						
●	LUP SU2	Lupinus succulentus / Arroyo Lupine	Seed		LOW	5
NATIVE SHRUBS						
●	AQU FO3	Aquilegia formosa / Western Columbine	4"	Pot	MODERATE	6
●	ART DOU	Artemisia douglasiana / Mugwort	4"	Pot	MODERATE	3
●	ASA CA3	Asarum caudatum / Wild Ginger	---	Plug	HIGH	6
●	BER PIN	Berberis pinnata / California Barberrry	4"	Pot	LOW	3
●	CHL POM	Chlorogalum pomeridianum / Soap Plant	4"	Pot	VERY LOW	2
●	CLA M13	Claytonia perfoliata / Miner's Lettuce	Seed		MODERATE	5
●	EPI HUM	Epiobium canum / California Fuchsia	4"	Pot	VERY LOW	3
●	ERY CAR	Erythranthe cardinalis / Scarlet Monkeyflower	4"	Pot	MODERATE	1
●	FRA WO3	Fragaria vesca / Woodland Strawberry	Plug		LOW	1
●	MON VI2	Monardella vilinea / Willow Monardella	4"	Pot	LOW	3
●	RIB GOL	Ribes aureum / Golden Currant	1 gal.	Pot	VERY LOW	8
●	STA ALI	Stachys albens / White Hedge Nettle	4"	Pot	MODERATE	7
●	SYM MO2	Symphoricarpos mollis / Creeping Snowberry	4"	Pot	LOW	10
●	TRI WOO	Trichostema lanatum / Woolly Blue Curis	1 gal.	Pot	VERY LOW	1
SUCCULENTS						
★	ALO VER	Aloe vera / Medicinal Aloe	4"	Pot	LOW	3
GROUND COVERS						
■	CHL PO2	Chlorogalum pomeridianum / Soap Plant	Plug		Very Low	99
EDIBLE						
■	ASA CA2	Asarum caudatum / Wild Ginger	Plug		High	506 sf
■	CLA MIN	Claytonia perfoliata / Miner's Lettuce	seed		YES	495
■	FRA WOO	Fragaria vesca / Woodland Strawberry	Plug		Low	16 sf



NIKKI RINEHART

UCLA LANDSCAPE ARCHITECTURE PROGRAM LD5 SITE DESIGN

SISTERS OF SOCIAL SERVICES 4316 LANAI RD ENCINO, CA 91436



SYMBOL	CODE	BOTANICAL / COMMON NAME	SIZE	CONTAINER	PLANT FACTOR	QTY
FRUITING SHRUBS						
●	VAC M15	Vaccinium x Misty / Misty Blueberry	1 gal.	Pot	MODERATE	2
●	VAC ONE	Vaccinium x O'Neal / O'Neal Blueberry	1 gal.	Pot	MODERATE	3
HERBS						
●	LAV CRE	Lavandula dentata Goodwin Creek Grey / Goodwin Creek Grey Lavender	4"	Pot	LOW	3
●	MEL OFF	Melissa officinalis / Lemon Balm	Seed		MODERATE	2
●	OZI PUR	Ocimum basilicum Purpurascens / Purple Basil	Seed		Unknown	4
●	ORI HER	Origanum heracleoticum / Greek Mountain / Oregano	Seed		LOW	4
●	ORI SWE	Origanum majorana / Sweet Marjoram	Seed		LOW	2
●	THY FGF	Thymus vulgaris / French / French Common Thyme	Seed		LOW	5
NATIVE SHRUBS						
●	BER PIN	Berberis pinnata / California Barberrry	4"	Pot	LOW	1
●	CHL POM	Chlorogalum pomeridianum / Soap Plant	4"	Pot	VERY LOW	5
●	ERY CAR	Erythranthe cardinalis / Scarlet Monkeyflower	4"	Pot	MODERATE	3
●	FRA WO2	Fragaria vesca / Woodland Strawberry	Plug		LOW	3
●	FRA CA3	Fragaria californica / California Coffeeberry	1 gal.	Pot	LOW	3
●	MON VI2	Monardella vilinea / Willow Monardella	4"	Pot	LOW	3
●	SAL SP2	Salvia spathacea / Hummingbird Sage	Plug		LOW	6
SEASONAL FRUITS AND VEGGIES						
●	CAP BPL	Capsicum annuum Pobano / Pobano Pepper	Seed		MODERATE	3
●	CUC UIS	Cucumis sativus Lemon / Lemon Cucumber	Seed		MODERATE	2
●	CUC UII	Cucurbita pepo pepo / Spaghetti Squash	Seed		MODERATE	1
●	SOL PMK	Solanum lycopersicum Black Krim / Black Krim Tomato	Seed		MODERATE	3
●	SOL NZC	Solanum lycopersicum San Marzano / San Marzano Tomato	Seed		MODERATE	3
GROUND COVERS						
■	ACM RNP	Acmispon americanus / Birdsfoot Trefoil	seed		Moderate	57 sf

ENLARGEMENTS

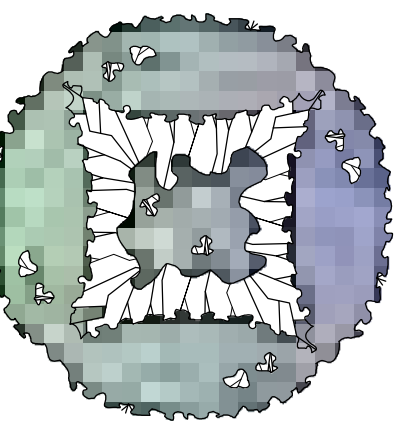
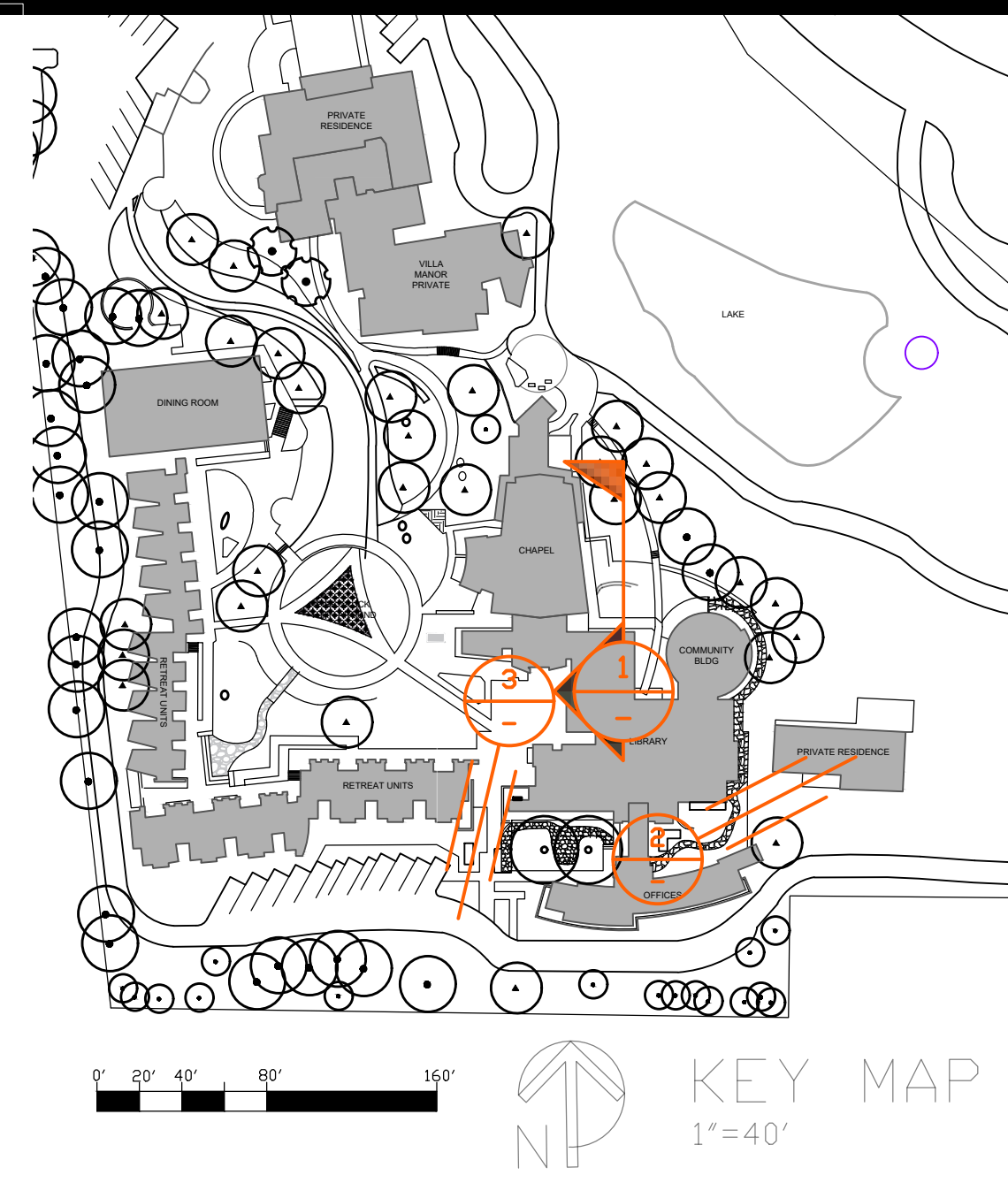
REVISION	DATE	BY

Date: 05-22-2025
Scale: AS SPECIFIED
Drawn By: NR
Sheet:

L-4

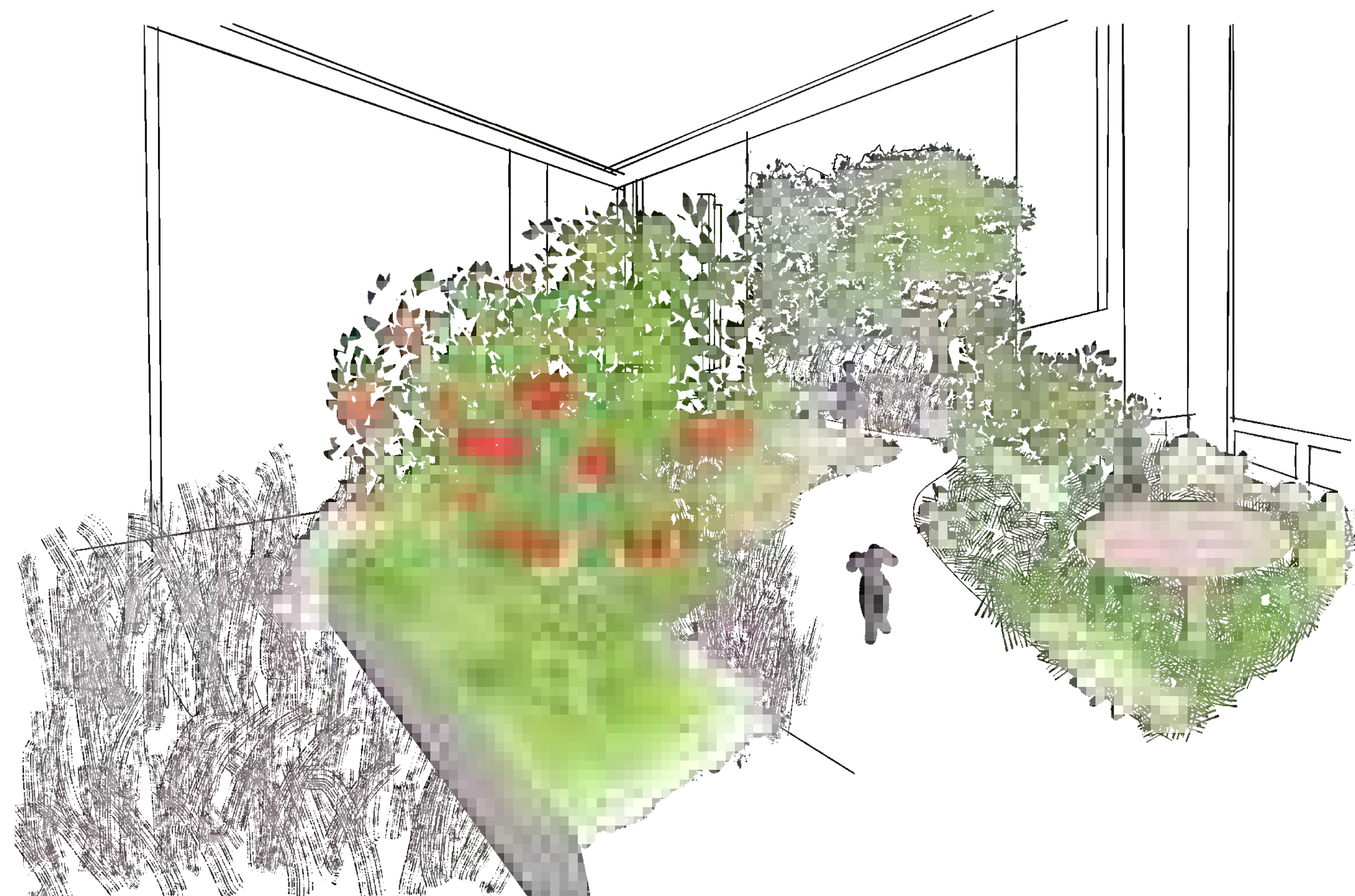


SECTION/ELEVATION 1
1/4"=1'-0"



NIKKI RINEHART

UCLA LANDSCAPE ARCHITECTURE PROGRAM
LD5 SITE DESIGN



EDIBLE GARDEN 2



ALTER GARDEN 3

SISTERS OF SOCIAL SERVICES
4316 LANAI RD
ENCINO, CA 91436

REVISION	DATE	BY

Date: 05-22-2025
Scale: AS SPECIFIED
Drawn By: NR
Sheet:

L-5

FINAL THOUGHTS

Get to know your insects. They are the greatest connection between plants and the rest of the world. They are part of the central core of the food (and propagation) web, along with plants and fungi. Take pictures and identify using iNaturalist or some other identification app, at least to get in the ballpark, and go from there. That's how I learned that my favorite wasp, *Bembix americana*, Western Sand Wasp, is a non-aggressive, solitary wasp who lays their eggs in bare earth. They catch flies during the day, and stuff them in the burrow with the eggs. They love *Encelia Californica* and *Eriogonum Sp.* Wasps do not have the amount of hairs that bees do, so they're not as effective pollinators, but they are awesome pest control. Some wasps are parasitoids; they lay their eggs inside aphids and other pests. I somehow feel empowered when I see mummified aphids corpses where there once were sap suckers. I help sustain the adults. There are wasps so small, that unless you know what you're looking at, you'd think they were gnats.



A note about Asian Citrus Psyllid: The Asian citrus psyllid, *Diaphorina citri*, is a tiny, mottled brown insect about the size of an aphid. This insect poses a serious threat to California's citrus trees because it vectors the pathogen that causes huanglongbing disease (HLB). This disease is the most serious threat to citrus trees worldwide—including those grown in home gardens and on farms. The psyllid feeds on all varieties of citrus. For more information, see note in references link to UC-IPM



Bembix americana
Western Sand Wasp
on *Encelia californica*



Bombus californicus
California Bumblebee
on *Stachys bullata*



Agrilus auroguttatus
Gold-spotted Oak Borer
evidence

A note on Argentine Ants: Argentine Ants are an invasive Hymenoptera species who have infested a majority of California. They farm insects such as scales and aphids onto plants in order to harvest their sweet, honey-like secretions (a.k.a. honeydew.) They also kill plants by depleting the microbiome, nutrients, and water in the soil, as well as farming scales onto the roots. They kill insects they see has a threat and have been known to kill lizards and baby birds. There are extensive methods to control the population. Please see handouts from UCLA extension Plant Studies II: Shrubs for recommended treatment.



Syrphidae Sp.
Hoverfly Sp
on *Cleomella arborea*



Coccinellidae Sp.
Lady Beetle Sp. Larva
on *Encelia californica*



Tom W. Coleman, USDA Forest Service
Used by permission



Agrilus auroguttatus
Gold-spotted Oak Borer



“Humans make plans, and Nature laughs.” These flora will go where they are happy, and it’s best to let them, as long as they are not causing destruction. What I am mostly talking about is planting say, a salvia in one spot and to go one direction, but it is happier going another. Or planting annuals, you may find their children yards away from where their parent lived but other in the same location. It’s also best to let flora go through their natural cycle, like going dormant. They do this for a reason. You may shorten their lifespan if you force them to do something against their nature, or open themselves up to pathogens.

It’s beneficial to have a year round water feature in order to support the local fauna. Make sure there is a way out for lizards and other small, non-winged creatures. Whatever the water feature is made out of, place rocks around the edge for insects to perch on and absorb minerals from. Plant some of the smaller riparian plants in moist spots.

During the summer months, give your loviess a nice sprinkle with a shower head hose attachment. Do this late in the afternoon, about once a week. They will benefit from having the dust rinsed off and to be cooled down. With a light sprinkle, the water should not go deep enough to cause pathogen problems. You may even find hummingbirds get accustomed to you and come play/drink from the shower.



Cool season

Kale <https://sandiegoseedcompany.com/product/vegetables/kale/organic-red-russian-kale-seeds/>
 Walla walla sweet onion, intermediate 10-14 hours sun <https://sandiegoseedcompany.com/product/vegetables/onions/walla-walla-bulbing-onion-seeds/>
<https://thegardenmagazine.com/walla-walla-onions-growing-care/>
 Red potato’s <https://sandiegoseedcompany.com/product/vegetables/potatoes/red-pontiac-seed-potatoes/>
 Organic cosmic purple carrots <https://sandiegoseedcompany.com/product/vegetables/carrots/organic-cosmic-purple-carrot-seeds/>
 Snowball Cauliflower <https://sandiegoseedcompany.com/product/vegetables/cauliflower/organic-snowball-cauliflower-seeds/>

Warm season

Lemon Cucumber <https://sandiegoseedcompany.com/product/vegetables/cucumbers/lemon-cucumber-seeds/>
 Spaghetti squash <https://sandiegoseedcompany.com/product/vegetables/squash/organic-spaghetti-winter-squash-seeds/>
 Trio bush beans <https://sandiegoseedcompany.com/product/vegetables/beans/so-cal-flavor-trio-bush-bean-seeds/>
 Purple kanti pole bean <https://sandiegoseedcompany.com/product/vegetables/beans/organic-purple-kanti-pole-bean-seeds/>
 Orange habenero <https://sandiegoseedcompany.com/product/vegetables/peppers/organic-orange-habenero-pepper-seeds/>
 Poblano <https://sandiegoseedcompany.com/product/vegetables/peppers/organic-poblano-pepper-seeds/>
 Eggplant black beauty <https://sandiegoseedcompany.com/product/vegetables/eggplant/organic-black-beauty-eggplant-seeds/>
 Artichoke <https://sandiegoseedcompany.com/product/vegetables/artichokes/green-globe-artichoke-seeds/>
 San marzano <https://sandiegoseedcompany.com/product/vegetables/tomatoes/organic-san-marzano-tomato-seeds/>

Basil variety seed mix <https://sandiegoseedcompany.com/product/herbs/basil/organic-basil-variety-mix-seeds/>
 Italian oregano <https://sandiegoseedcompany.com/product/herbs/oregano-seeds/>
 Lemon balm <https://sandiegoseedcompany.com/product/herbs/organic-lemon-balm-seeds/>
<https://www.almanac.com/plant/how-grow-lemon-balm-complete-guide/>
 Marjoram <https://sandiegoseedcompany.com/product/herbs/organic-marjoram-seeds/>
<https://www.epicgardening.com/growing-marjoram/>
 Greek oregano <https://www.reneesgarden.com/products/oregano-true-greek?srsId=AfmBOoobwWEhRCYP0S-NECqIK0SftVzNAVBe0yTBUg0wK9aYAD1B9-oOu>
<https://www.thespruce.com/growing-oregano-plants-1402818>
 French thyme https://www.reneesgarden.com/products/thyme-french-culinary?_pos=2&_sid=4025acbeb&_ss=r
<https://mygardenlife.com/plant-library/french-thyme-thymus-vulgaris/>
 Lavender Goodwin creek grey https://www.smgrowers.com/products/plants/plantdisplay.asp?plant_id=942

Katy apricot <https://www.davewilson.com/nurseries/products/fruit-trees/apricot/katy/>
<https://minnetonkaorchards.com/katy-apricot-tree/>
 Dorset golden apple https://www.davewilson.com/nurseries/products/fruit-trees/apple/dorsett_golden/
 Dorsett Golden Apple Tree Guide: Care, Planting & Harvesting - Rennie Orchards
 Anna’s apple <https://www.davewilson.com/nurseries/products/fruit-trees/apple/anna/>
<https://minnetonkaorchards.com/anna-apples/>
 Emperor Lychee for container <https://www.fast-growing-trees.com/products/emperor-lychee-tree>
<https://tropicaltreeguide.com/emperor-lychee-grow-guide/>

REFERENCES

Reed avocado <https://www.fourwindsgrowers.com/products/reed-avocado-tree?variant=12281391120488>
<https://minnetonkaorchards.com/reed-avocado/>

Fuerte Avocado from Select Tree

Meyer lemon <https://devilmountainnursery.com/lemon-improved-meyer/>
<https://www.thespruce.com/growing-meyer-lemon-trees-in-pots-848166>

Cara Cara Orange <https://www.fourwindsgrowers.com/a/blog/all-about-the-cara-cara-orange-tree>
<https://minnetonkaorchards.com/cara-cara-orange-tree/>

Misty Blueberry <https://www.smartgardener.com/plants/1377-blueberry-misty/overview>

- Misty blueberry bush containers Southern highbush with low chill hours requirements
- Small–medium size berries which are firm with a very good tart flavor
- Bears very heavy crop earlier than all the rest with a second small harvest in the fall
- Care should be taken to not let Misty overbear
- Has outstanding landscape characteristics with its striking hot pink buds and bushy, more upright growth than Sunshine Blue
- Very attractive dark green foliage

<https://www.fourwindsgrowers.com/products/misty-blueberry-bush?variant=12275020759144>

Blueberry info <https://mgsantaclara.ucanr.edu/garden-help/fruits-nuts/blueberries/blueberry-varieties/>

- O’Neal blueberry Southern highbush, which is suitable for California, both coastal and inland

- Low chill hours requirement of 200-300 hours

- Very large sized fruit with a mild sweet – bland flavor

- Bush is vigorous and upright to 6 feet

- Foliage is attractive gray-green in summer accented with red stems and branches

<https://onegreenworld.com/product/oneal-southern-highbush-blueberry/>

Scarlet monkeyflower <https://www.gardenia.net/plant/mimulus-cardinalis>

Stachys albens medicinal <https://pmc.ncbi.nlm.nih.gov/articles/PMC11597018/>

Salix medicinal <https://pmc.ncbi.nlm.nih.gov/articles/PMC7908037/>

Native Plant Databases

California Native Plant Society www.calscape.org

Theodore Payne Foundation for Native Plants and Wildflowers https://theodorepayne.org/nativeplantdatabase/index.php?title=Main_Page

Theodore Payne Foundation Shop https://store.theodorepayne.org/products/theodore-payne-foundation-stachys-albens-local-san?_pos=1&_sid=c807f46fb&_ss=r

www.calflora.org

Tree of Life Nursery Catalogue Tree of Life Nursery – We Grow.

Las Pilitas Nursery Native Plants, Las Pilitas Nurseries.

WOCULS Water Factor Database, UC Davis <https://wucols-frontend.ucdavis.edu/>

California Native Plants for the Garden, Carol Bornstein, David Fross, Bart ‘Brien. Cachuma Press 2005

The Drought Defying-California Garden; Greg Rubin, Lucy Warren. 2016

Seed Propagation of Native California Plants Dara E. Emery. Santa Barbara Botanic Garden, 2021

California Plant Families: West of the Sierran Crest and Desert; Glen Keator, Margaret J. Steunenber.

The Regents of University of California, 2009

Living Wild: Gardening, Cooking and Healing with Native Plants of California. Alicia Funk and Karin Kaufmin, CNPS

University of California Integrative Pest Management (CAL-IPM) Oak pests: [https://ipm.ucanr.edu/PMG/PEST-NOTES/pn74163.html#:~:text=The%20goldspotted%20oak%20borer%20\(GSOB,in%20Riverside%20County%20in%202012.](https://ipm.ucanr.edu/PMG/PEST-NOTES/pn74163.html#:~:text=The%20goldspotted%20oak%20borer%20(GSOB,in%20Riverside%20County%20in%202012.)

Argentine ants CAL IPM <https://ipm.ucanr.edu/TOOLS/ANTKEY/argentine.html>

UC Riverside <https://cisr.ucr.edu/invasive-species/argentine-ant>

photo <https://gardenerspath.com/how-to/disease-and-pests/control-argentine-ants/>

Tree pests and pathogens Selecttree.org

Asian Citrus psyllid <https://ipm.ucanr.edu/PMG/PESTNOTES/pn74155.html>

Salvia ‘Bees Bliss’: <https://plantsexpress.com/products/bees-bliss-sage>



