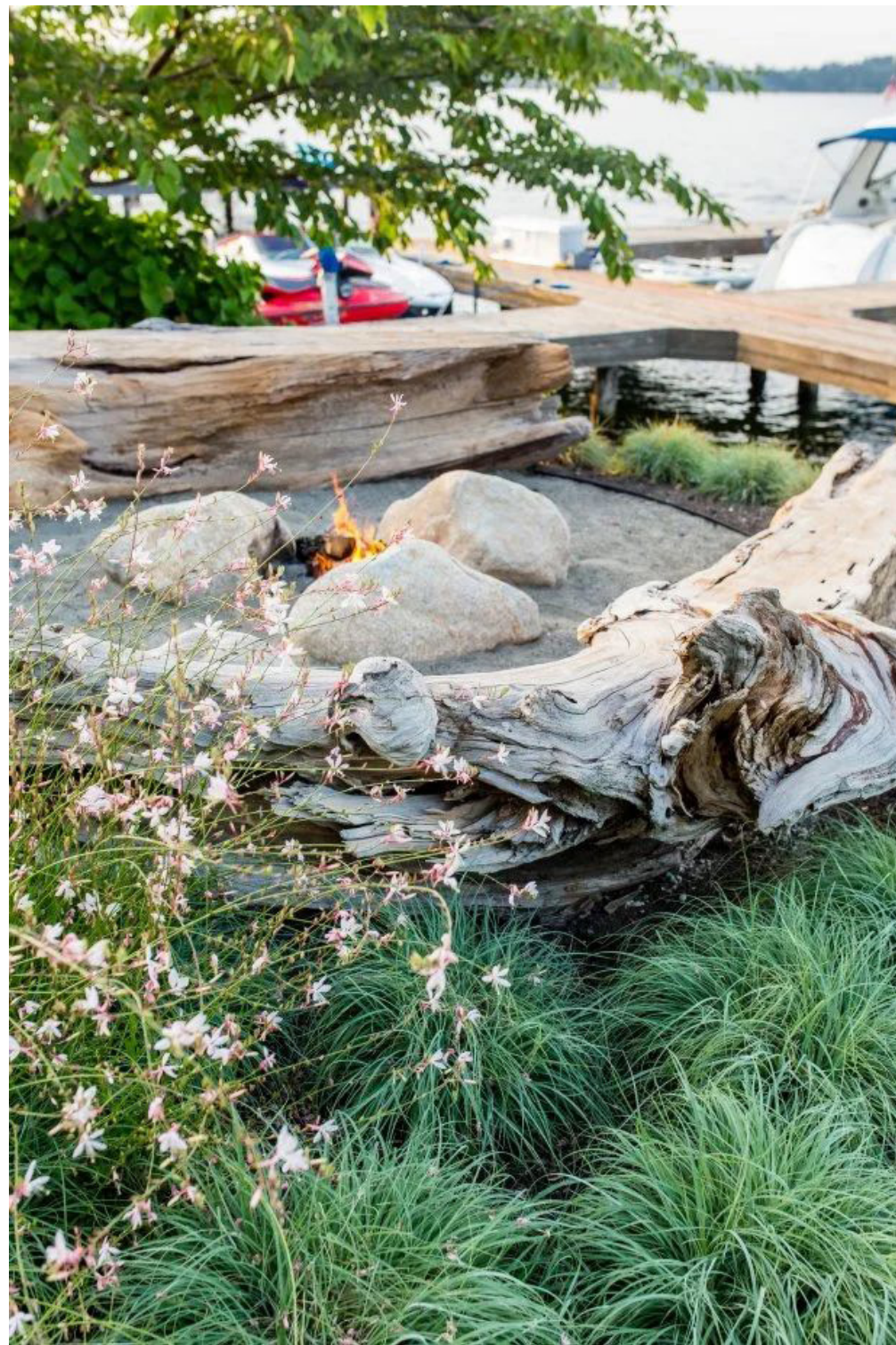


LEARN, PLAY, GROW!

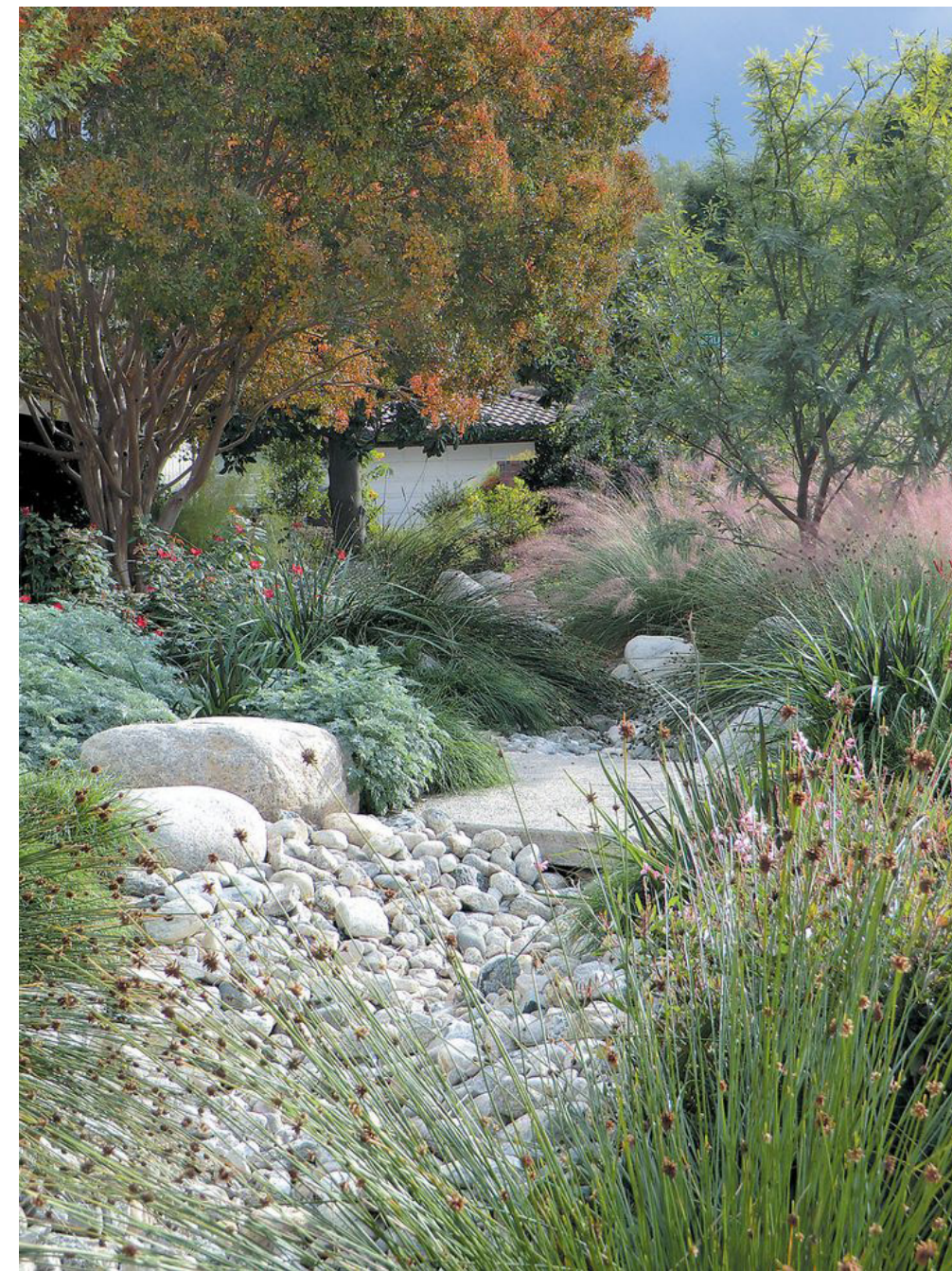
Kristin Byrd  
Residential Design  
Landscape Design 5  
Instructor Pamela Brief  
UCLA Extension  
Spring Quarter 2025

# LEARN, PLAY, GROW...



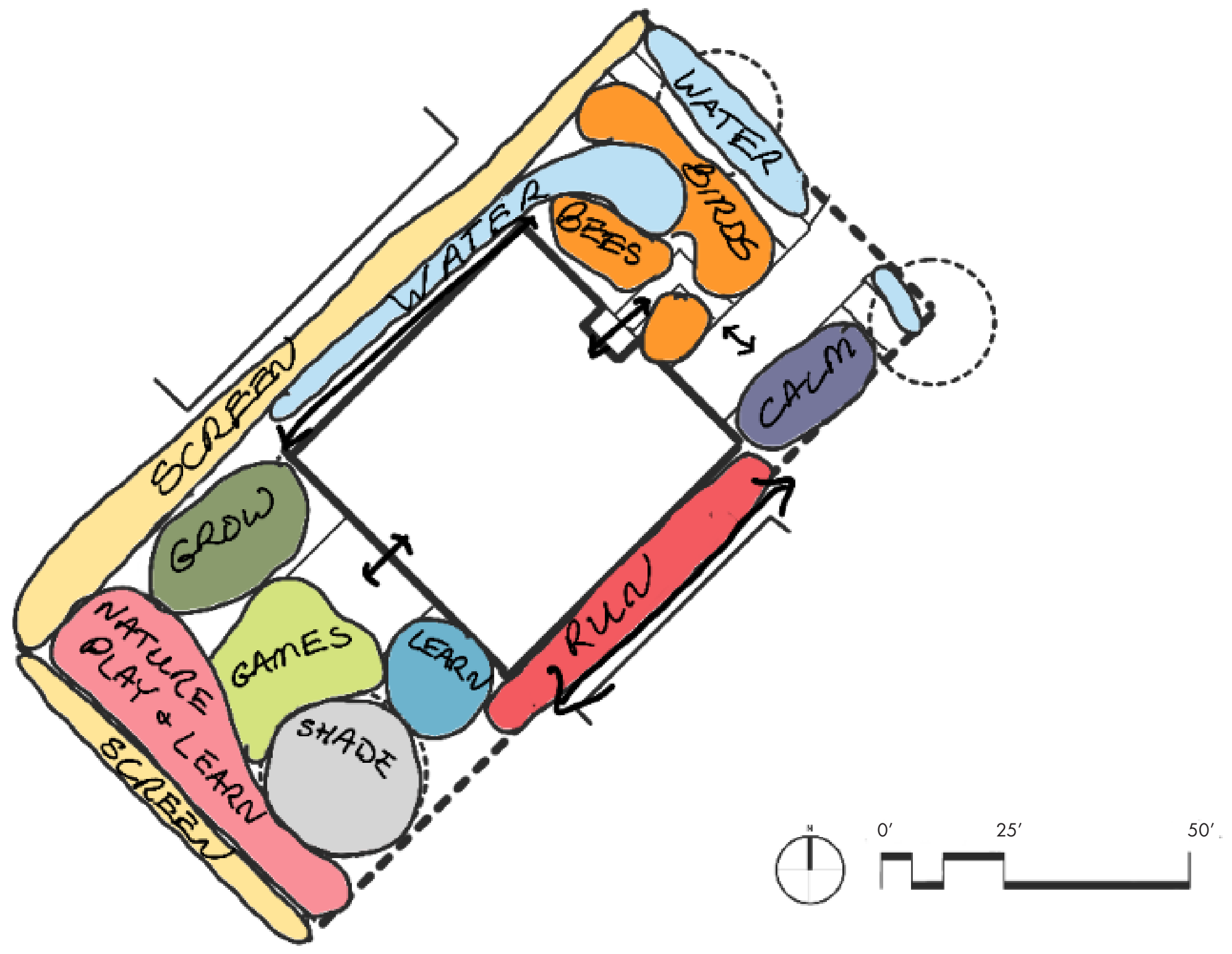
# ON THE COAST

We have created a landscape for a young family to learn, play, and grow in Santa Monica. Our design brings their love of the beach and of nature home, and includes playful natural spaces with rocks, sand and driftwood, and plants that attract hummingbirds and butterflies. Our design will grow with the family, with opportunities to study nature, grow vegetables, and play games. The landscape is also designed to fight the families' allergies, by only including low pollen, low allergy plants. The Ogren Plant Allergy Scale (OPALS) ranks plants from 1 to 10, with 1 being the least allergenic and 10 being the most. Most of our selected plants are ranked 3 or less.





# BUBBLE DIAGRAM



# FRONT PLANT PALETTE

## MORNING YOGA



*Carpenteria californica* 'Elizabeth'

## THE HEDGE



*Myrica californica*

## BIRDS AND BEES



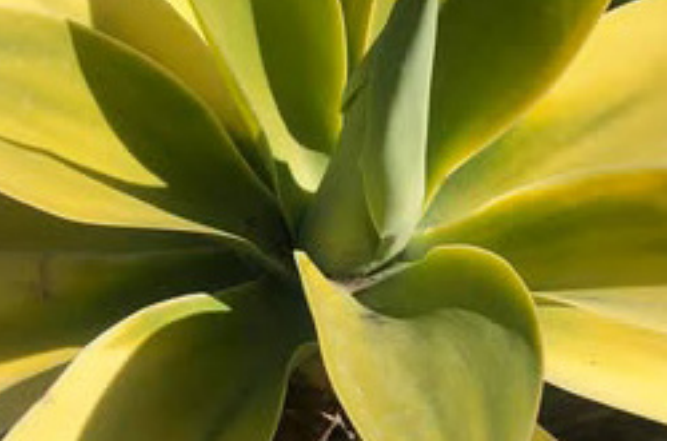
*Cercis occidentalis*

*Cuphea ignea*

## THE SHADE SUCCULENTS



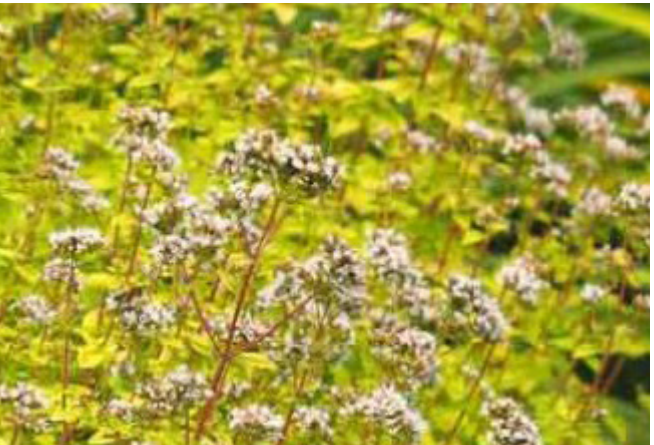
*Aeonium arboreum* 'Zwartkop'



*Agave attenuata* 'Raea's Gold'



*Epilobium canum* ssp. *canum*



*Origanum vulgare* 'Aureum'



*Agave attenuata* 'Boutin Blue'



*Salvia* 'Pozo Blue'



*Symphoricarpos albus* var *laevigatus*

# BACK/SIDE PLANT PALETTE

## THE LAWN/DOG RUN



*Buchloe dactyloides 'UC Verde'*

## THE HEDGE



*Myrica californica*

## THE PATIO AND STUDY AREA

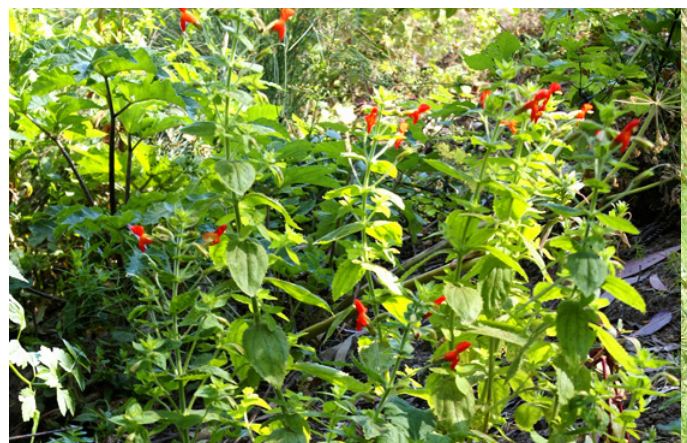


*Asclepias fascicularis*



*Diospyros kaki 'Jiro'*

## THE RAIN GARDEN



*Erythranthe cardinalis*



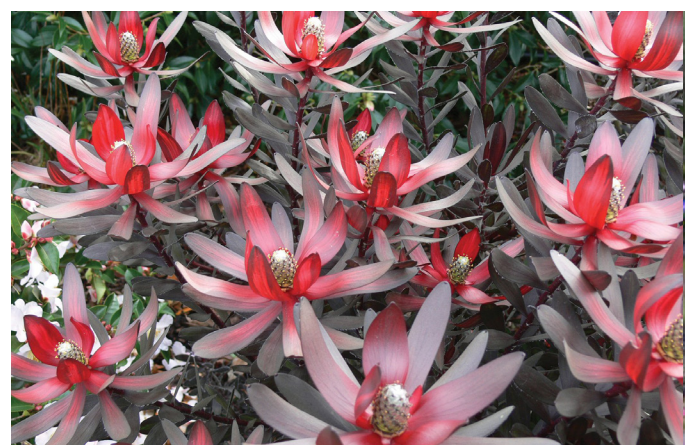
*Juncus patens*



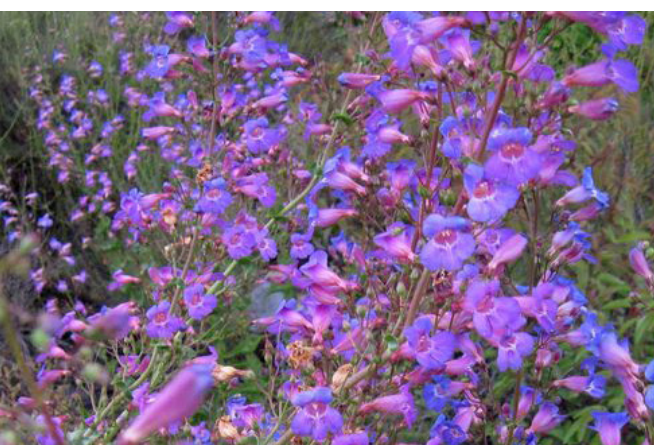
*Passiflora caerulea 'Constance Elliott'*



*Kniphofia thomsonii*



*Leucadendron x 'Ebony'*



*Penstemon spectabilis*

# BACK PLANT PALETTE

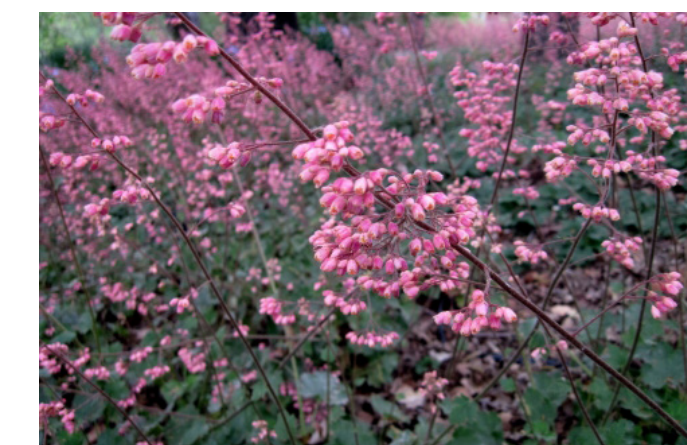
## THE SHADE TREE



*Ceanothus 'Centennial'*



*Gambelia speciosa*



*Heuchera maxima*

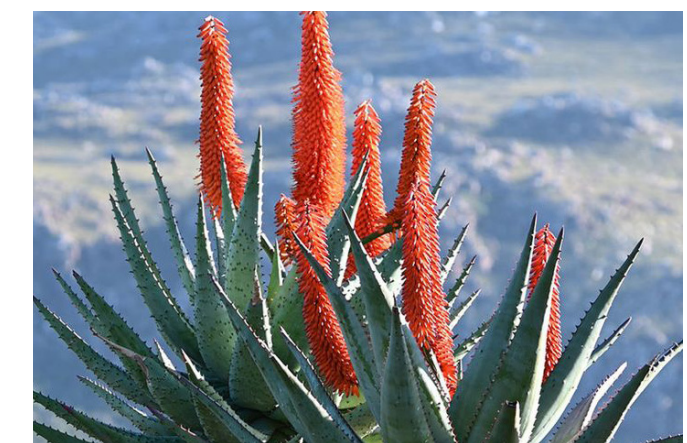
## THE "BEACH"



*Abronia maritima*



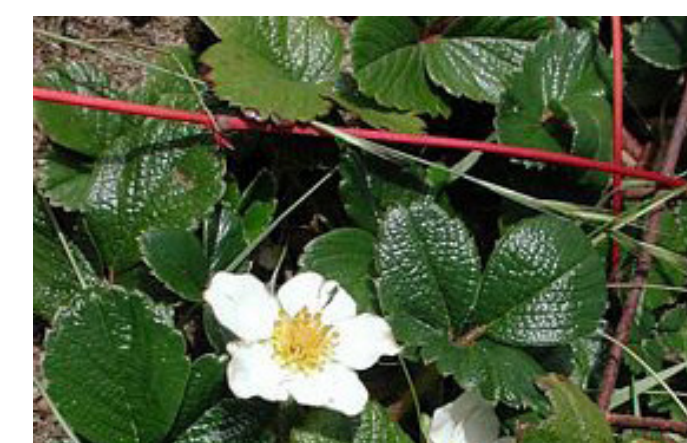
*Aloe 'David Verity'*



*Aloe ferox*

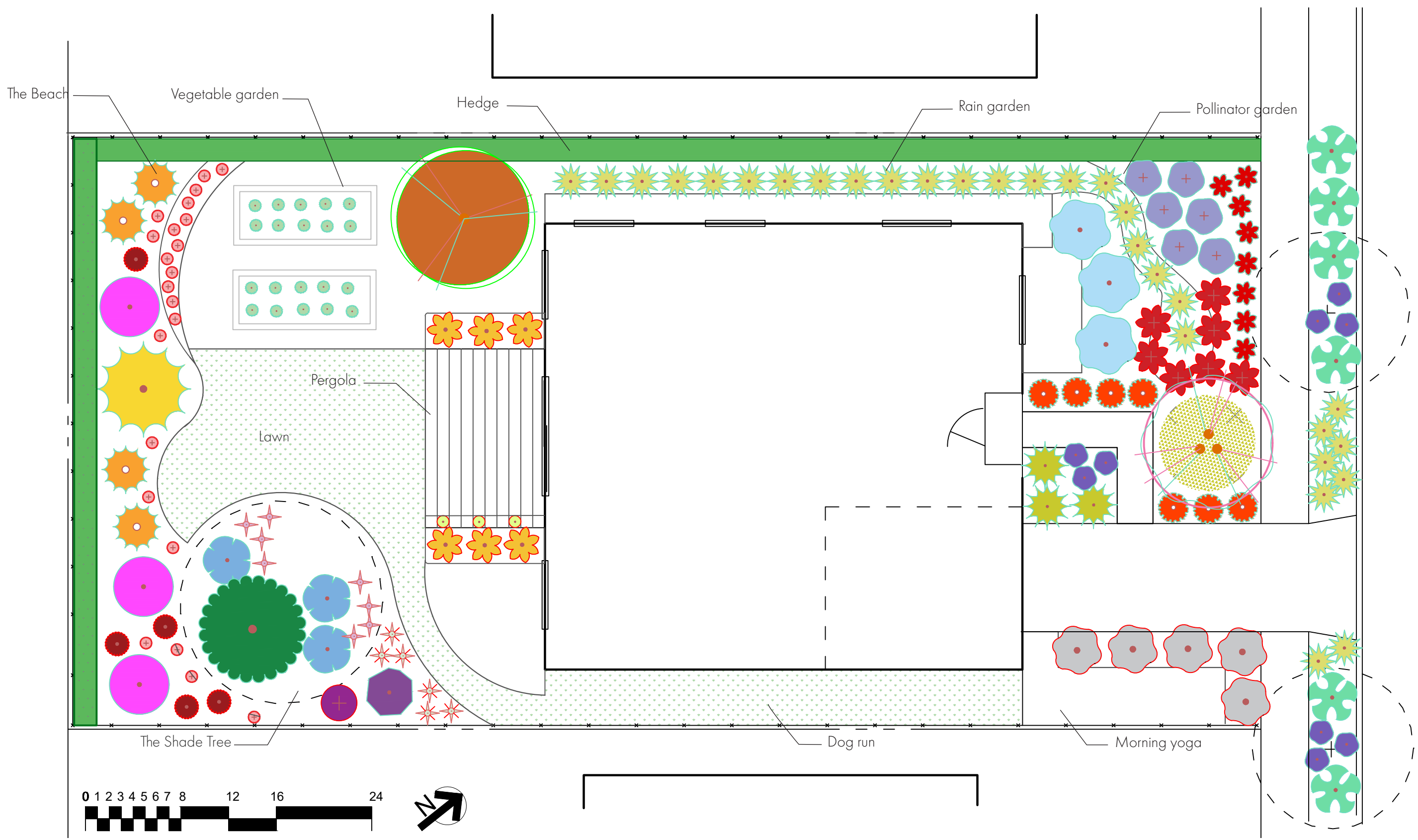


*Armeria maritima*



*Fragaria chiloensis*

# PLANTING PLAN



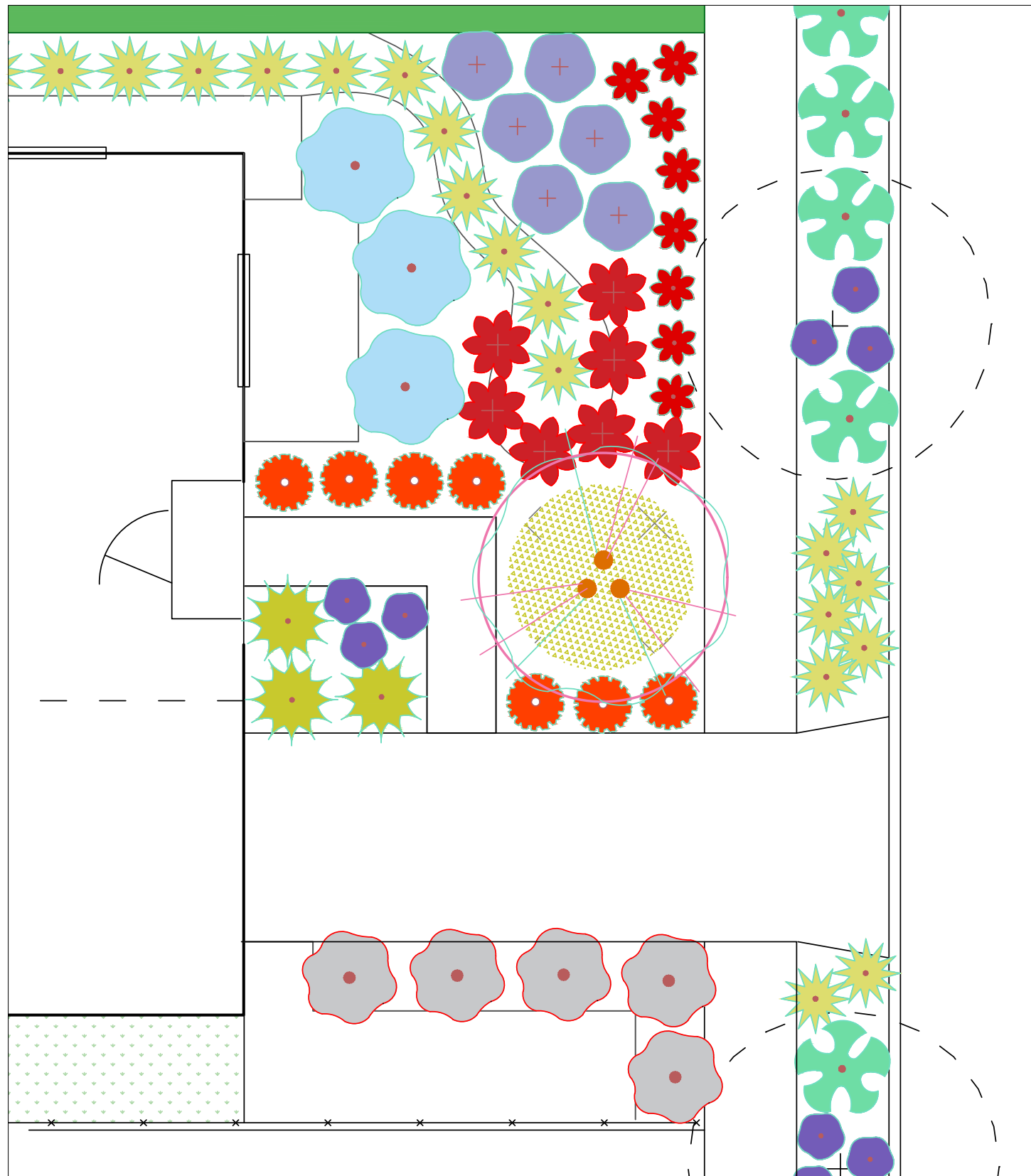
# PLANT SCHEDULE

## PLANT SCHEDULE

SYMBOL	CODE	BOTANICAL / COMMON NAME	SIZE	QTY
<b>TREES</b>				
	CER WES	Cercis occidentalis / Western Redbud Multi-trunk	15 gal.	1
	DIO JIR	Diospyros kaki 'Jiro' / Jiro Persimmon	15 gal.	1
<b>SHRUBS</b>				
	ABR MAR	Abronia maritima / Red Sand Verbena	1 gal.	3
	AEO ZWA	Aeonium arboreum 'Zwartkop' / Zwartkop Tree Aeonium	1 gal.	9
	AGA BO4	Agave attenuata 'Boutin Blue' / Boutin Blue Foxtail Agave	5 gal.	6
	AGA RAE	Agave attenuata 'Raea's Gold' / Raea's Gold Foxtail Agave	5 gal.	3
	ALO FER	Aloe ferox / Bitter Tree Aloe	5 gal.	4
	ALO DAV	Aloe x 'David Verity' / David Verity Aloe	5 gal.	1
	ARM MAR	Armeria maritima / Sea Thrift	1 gal.	22
	ASC FAS	Asclepias fascicularis / Narrowleaf Milkweed	1 gal.	6
	CAR CAL	Carpenteria californica / Bush Anemone	5 gal.	5
	CEA CNT	Ceanothus x 'Centennial' / Centennial Wild Lilac	5 gal.	3
	CUP IGN	Cuphea ignea / Cigar Plant	1 gal.	8
	EPI HUM	Epilobium canum / California Fuchsia	1 gal.	7
	ERY CAR	Erythranthe cardinalis / Scarlet Monkeyflower	1 gal.	7
	FRA CHI	Fragaria chiloensis / Beach Strawberry	Flat	5
	GAM SPE	Gambelia speciosa / Island Snapdragon	1 gal.	1

	HEU MAX	Heuchera maxima / Island Alum Root	1 gal.	8	
	PAS CAE	Passiflora caerulea / Blue crown passion flower	1 gal.	3	
	JUN PAT	Juncus patens / California Gray Rush	1 gal.	29	
	KNI LTO	Kniphofia thomsonii / Alpine Poker	5 gal.	6	
	LEU EB8	Leucadendron x 'Ebony' / Ebony Conebush	5 gal.	1	
	PEN SPE	Penstemon spectabilis / Showy Penstemon	1 gal.	1	
	SAL POZ	Salvia clevelandii 'Poza Blue' / Poza Blue Cleveland Sage	5 gal.	6	
	SYM ALB	Symphoricarpos albus / Common Snowberry	5 gal.	3	
<b>SHRUB AREAS</b>					
	MYR IO2	Myrica myrica californica / Pacific wax myrtle	5 gal.	120" o.c.	92 sf
<b>GROUND COVERS</b>					
	BUC UC2	Buchloe dactyloides 'UC Verde' / UC Verde Buffalo Grass	flat	12" o.c.	535 sf
	ORI AUR	Origanum vulgare 'Aureum' / Golden Oregano	flat	12" o.c.	51 sf


# THE FRONT YARD



## PLANT SCHEDULE FRONT

SYMBOL   CODE   BOTANICAL / COMMON NAME   SIZE   QTY

### TREES

 CER WES   Cercis occidentalis / Western Redbud Multi-trunk   15 gal.   1

### SHRUBS

 AEO ZWA   Aeonium arboreum 'Zwartkop' / Zwartkop Tree Aeonium   1 gal.   9

 AGA BO4   Agave attenuata 'Boutin Blue' / Boutin Blue Foxtail Agave   5 gal.   6

 AGA RAE   Agave attenuata 'Raea's Gold' / Raea's Gold Foxtail Agave   5 gal.   3

 CAR CAL   Carpenteria californica / Bush Anemone   5 gal.   5

 CUP IGN   Cuphea ignea / Cigar Plant   1 gal.   8

 EPI HUM   Epilobium canum / California Fuchsia   1 gal.   7

 ERY CAR   Erythranthe cardinalis / Scarlet Monkeyflower   1 gal.   7


 JUN PAT   Juncus patens / California Gray Rush   1 gal.   16

 SAL POZ   Salvia clevelandii 'Poza Blue' / Poza Blue Cleveland Sage   5 gal.   6

 SYM ALB   Symphoricarpos albus / Common Snowberry   5 gal.   3

SYMBOL   CODE   BOTANICAL / COMMON NAME   SIZE

### GROUND COVERS

 ORI AUR   Origanum vulgare 'Aureum' / Golden Oregano   flat

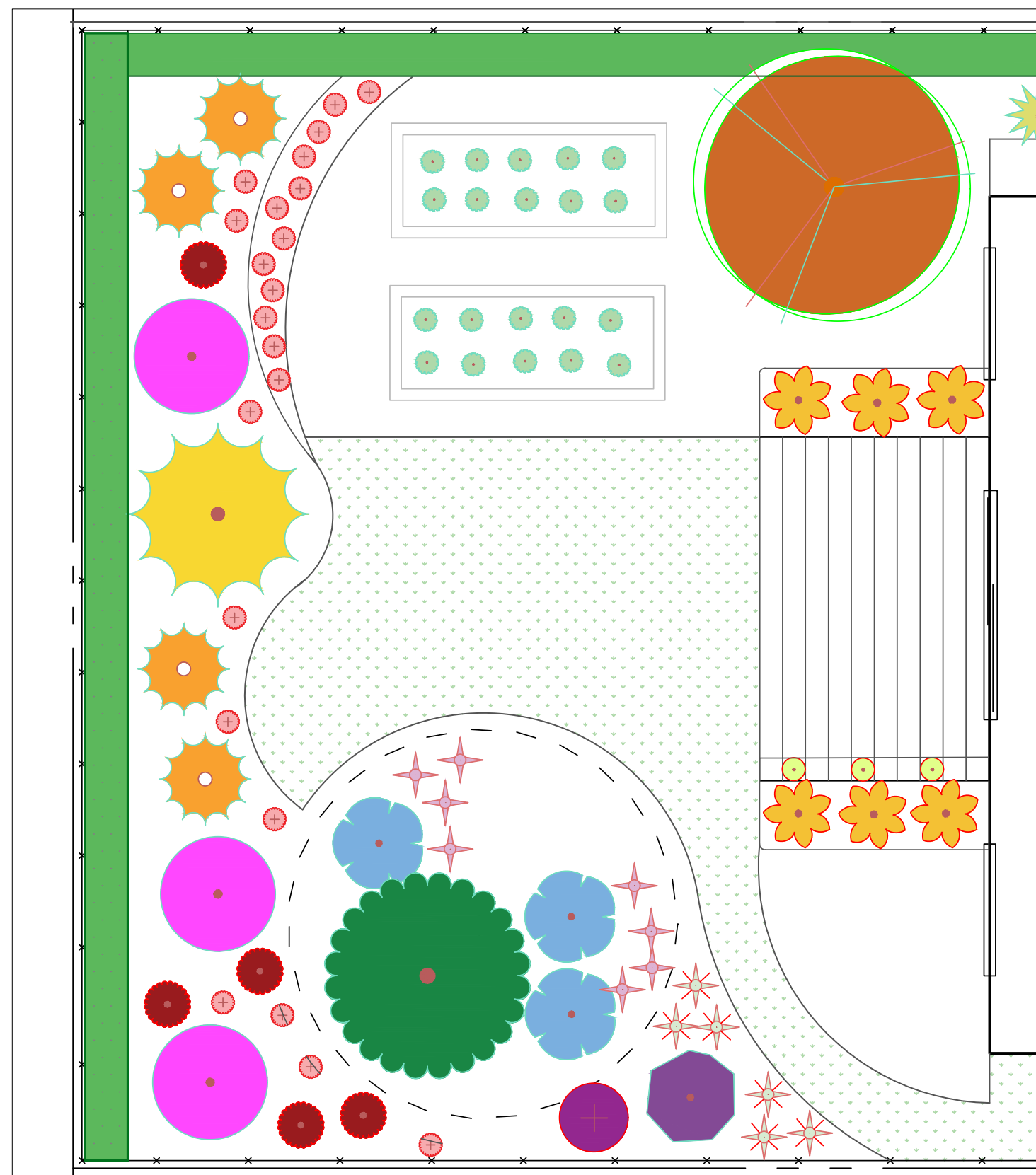


0'   2.5'   5'   10'

# THE FRONT PLANT PALETTE

CODE	BOTANICAL / COMMON NAME	CA Native?	WUCOLS	OPALS	FULL SUN	PART SHADE	SHADE	MATURE HEIGHT	MATURE WIDTH	NOTES	PLANT ORIGIN
<b>The Rain Garden/Swale</b>											
ERY CAR	<i>Erythranthe cardinalis</i> / Scarlet Monkeyflower	Yes	M	1	X	X		18 - 36 in. ht.	1 - 3 ft. w.	Hummingbirds	North America
JUN PAT	<i>Juncus patens</i> / California Gray Rush	Yes	M	NA	X	X	X	18 - 36 in. ht.	1 - 3 ft. w.		North America, Southwestern North America
<b>Morning Yoga</b>											
CAR CAL	<i>Carpenteria californica</i> / Bush Anemone	Yes	L	1	X	X		6 - 10 ft. ht.	3 - 6 ft. w.	Bees and butterflies	North America, Southwestern North America
<b>Birds and Bees</b>											
CER WES	<i>Cercis occidentalis</i> / Western Redbud Multi-trunk	Yes	L	4	X	X		10 - 20 ft. ht.	10 - 15 ft. w.	Pink spring flowers	North America
CUP IGN	<i>Cuphea ignea</i> / Cigar Plant	No	M	2	X	X		18 - 36 in. ht.	1 - 3 ft. w.	Hummingbirds, butterflies	Southwestern North America, Caribbean
EPI HUM	<i>Epilobium canum</i> / California Fuchsia	Yes	L	6	X	X		6 - 18 in. ht.	1 - 3 ft. w.	Hummingbirds	North America, Southwestern North America
ORI AUR	<i>Origanum vulgare</i> 'Aureum' / Golden Oregano	No	L	3	X	X		18 - 36 in. ht.	1 - 2 ft. w.	Butterflies	Mediterranean
SAL POZ	<i>Salvia clevelandii</i> 'Poza Blue' / Poza Blue Cleveland Sage	Yes	VL	1 to 4	X	X		3 - 6 ft. ht.	1 - 3 ft. w.	Hummingbirds, butterflies, bees	North America
SYM ALB	<i>Symphoricarpos albus</i> / Common Snowberry	Yes	L	3	X	X		3 - 6 ft. ht.	3 - 6 ft. w.	Winter berries food for birds	North America, Northeastern North America
<b>The Shade Succulents</b>											
AEO ZWA	<i>Aeonium arboreum</i> 'Zwartkop' / Zwartkop Tree Aeonium	No	L	1			X	18 - 36 in. ht.	1 - 3 ft. w.	Bees	Macaronesia
AGA BO4	<i>Agave attenuata</i> 'Boutin Blue' / Boutin Blue Foxtail Agave	No	VL	4 to 6	X	X		18 - 36 in. ht.	3 - 6 ft. w.		North America, Southwestern North America
AGA RAE	<i>Agave attenuata</i> 'Raea's Gold' / Raea's Gold Foxtail Agave	No	VL	4 to 6	X	X		18 - 36 in. ht.	3 - 6 ft. w.		North America, Southwestern North America

# THE BACK YARD



## PLANT SCHEDULE BACK

SYMBOL	CODE	BOTANICAL / COMMON NAME	SIZE	QTY
<b>TREES</b>				
	DIO JIR	Diospyros kaki 'Jiro' / Jiro Persimmon	15 gal.	1
<b>SHRUBS</b>				
	ABR MAR	Abronia maritima / Red Sand Verbena	1 gal.	3
	ALO FER	Aloe ferox / Bitter Tree Aloe	5 gal.	4
	ALO DAV	Aloe x 'David Verity' / David Verity Aloe	5 gal.	1
	ARM MAR	Armeria maritima / Sea Thrift	1 gal.	22
	ASC FAS	Asclepias fascicularis / Narrowleaf Milkweed	1 gal.	6
	CEA CNT	Ceanothus x 'Centennial' / Centennial Wild Lilac	5 gal.	3
	FRA CHI	Fragaria chiloensis / Beach Strawberry	Flat	5
	GAM SPE	Gambelia speciosa / Island Snapdragon	1 gal.	1
	HEU MAX	Heuchera maxima / Island Alum Root	1 gal.	8
	PAS CAE	Passiflora caerulea / Blue crown passion flower	1 gal.	3
	KNI LTO	Kniphofia thomsonii / Alpine Poker	5 gal.	6
	LEU EB8	Leucadendron x 'Ebony' / Ebony Conebush	5 gal.	1
	PEN SPE	Penstemon spectabilis / Showy Penstemon	1 gal.	1
SYMBOL	CODE	BOTANICAL / COMMON NAME	SIZE	QTY
<b>SHRUB AREAS</b>				
	MYR IO2	Myrica myrica californica / Pacific wax myrtle	5 gal.	



# THE BACK PLANT PALETTE

CODE	BOTANICAL / COMMON NAME	CA Native?	WUCOLS	OPALS	FULL SUN	PART SHADE	SHADE	MATURE HEIGHT	MATURE WIDTH	NOTES	PLANT ORIGIN
<b>The Beach</b>											
ABR MAR	<i>Abronia maritima</i> / Red Sand Verbena	Yes	VL	1			X	5 in. ht.	2 - 6 ft. w.		North America
ALO DAV	<i>Aloe x 'David Verity'</i> / David Verity Aloe	No	L	1	X			3 - 6 ft. ht.	6 - 10 ft. w.		Hybrid origin
ALO FER	<i>Aloe ferox</i> / Bitter Tree Aloe	No	L	1	X			6 - 10 ft. ht.	1 - 3 ft. w.	Birds, bees, hummingbirds	Africa, Southern Africa
ARM MAR	<i>Armeria maritima</i> / Sea Thrift	Yes	M	1	X	X		< - 1 ft. ht.	< 1 ft. w.		Europe, North America
FRA CHI	<i>Fragaria chiloensis</i> / Beach Strawberry	Yes	L	1	X	X		< 6 in. ht.	1 - 3 ft. w.		North America
<b>The Patio and Study Area</b>											
ASC FAS	<i>Asclepias fascicularis</i> / Narrowleaf Milkweed	Yes	VL	3	X	X		18 - 36 in. ht.	1 - 3 ft. w.	Monarch butterfly caterpillar host	North America
DIO FUY	<i>Diospyros kaki 'Fuyu'</i> / Fuyu Persimmon	No	M	1 (F)	X			15 - ft. ht.	15 - ft. w.	Fall color	Central Asia, Eastern Asia, Japan
PAS CAE	<i>Passiflora caerulea</i> / Blue crown passion flower	No	L	3	X	X		10 - 15 ft. ht.	3 ft. w.	Butterflies	South America
KNI LTO	<i>Kniphofia thomsonii</i> / Alpine Poker	No	M	4	X			3 - 5 ft. ht.	2 - 4 ft. w.	Butterflies, hummingbirds	Central Africa
LEU EB8	<i>Leucadendron x 'Ebony'</i> / Ebony Conebush	No	L	1 (F)	X			3 - 6 ft. ht.	3 - 6 ft. w.		Hybrid origin
PEN SPE	<i>Penstemon spectabilis</i> / Showy Penstemon	Yes	L	2	X			3 - 6 ft. ht.	3 - 6 ft. w.	Bees, hummingbirds, butterflies	North America, Southwestern North America
<b>The Shade Tree</b>											
CEA CNT	<i>Ceanothus x 'Centennial'</i> / Centennial Wild Lilac	Yes	VL	3	X	X	X	6 - 18 in. ht.	3 - 6 ft. w.		Hybrid origin
GAM SPE	<i>Gambelia speciosa</i> / Island Snapdragon	Yes	L	2	X	X	X	18 - 36 in. ht.	10 ft. w.	Hummingbirds, Checkspot butterfly host	North America
HEU MAX	<i>Heuchera maxima</i> / Island Alum Root	Yes	L	1	X	X	X	6 - 18 in. ht.	1 - 3 ft. w.		North America, Southwestern North America
<b>The Hedge</b>											
MYR IOW	<i>Myrica myrica californica</i> / Pacific wax myrtle	Yes	L	1 (F)	X	X		6 - 33 ft. ht.	20 ft. w.		North America
<b>The Lawn/Dog Run</b>											
BUC UCV	<i>Buchloe dactyloides 'UC Verde'</i> / UC Verde Buffalo Grass	No	L	1 (F)	X			2 - 5 in. ht.	1.2 ft. w.		Hybrid origin

# REFERENCES

Calscape.org

Thespruce.com

gardenia.net

WUCOLS database, <https://ccuh.ucdavis.edu/wucols-db>

Toxic and non-toxic plant list - dogs, <https://www.aspca.org/pet-care/animal-poison-control/dogs-plant-list>

The New Sunset Western Garden Book, 12th Edition

California Master Gardener Handbook, Second Edition

California Native Plants for the Garden by Bornstein, Fross, and O'Brien

The Allergy-Fighting Garden by Thomas Leo Ogren