

Stillwater Garden

for Becki's family



Stillwater Garden is a drought-tolerant, California-fied take on a traditional Japanese Zen garden. This design is inspired by the landscape of the Apple family TV show Stillwater. The design uses elements of eastern garden tradition to inspire contemplation and connection with the present moment, while maintaining a lively feel.

Thoughtful plantings separate spaces and suggest active or passive use. The front yard is a colorful, drought-tolerant pollinator garden, featuring plants that host monarch and El Segundo blue butterflies. Roof runoff is directed toward a Fuyu persimmon tree that is accessible by a stone-paved path. The path continues on the NW face of the house, where grasses and vines are paired to create a privacy border at the redwood fence. In the backyard, the path opens to the strawberry patch and raised bed kitchen garden. A section of lawn extends from the patio to make more open flexible space, and of course, allow for play. Away from the house are the koi pond, shade garden, and two benches. These quiet spaces are screened from the active lawn and kitchen garden by a structural evergreen manzanita shrub and the existing stately oak.

Stillwater garden is meant to grow and change with the seasons, alongside the family.

Water

Drip irrigation is recommended for its efficiency and its easy customization. Most areas of the garden will have low water needs once established. During establishment (the first 1-2 years), these low zones may require water weekly to monthly. After establishment, these zones should be watered only during extreme summer heat or extreme dry periods, never more than once/week. The low water zones are the dry infiltration garden in the front yard (including the parkway), the dry shade garden under the oak in the back yard, and the fenceline beds on the NW and SW perimeters.

The Japanese maple and Fuyu persimmon trees require a moderate amount of water once established. The plants placed underneath these trees are chosen for this condition. The Southern California Waterwise Garden Planner is great guide to the seasonal water needs of a moderate use garden. Note that proper maintenance of these zones include monitoring for dryness or rotting, which may affect the watering schedule.

The edible garden areas, including the strawberry patch and raised beds, should be watered by hand. Each crop has its own water need which should be known at the time of planting. Many of them will be on a moderate to daily schedule.

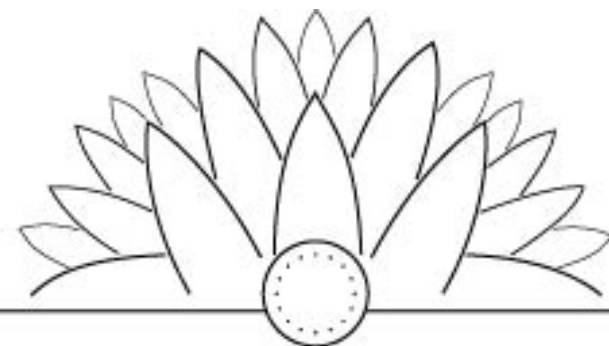
Soil

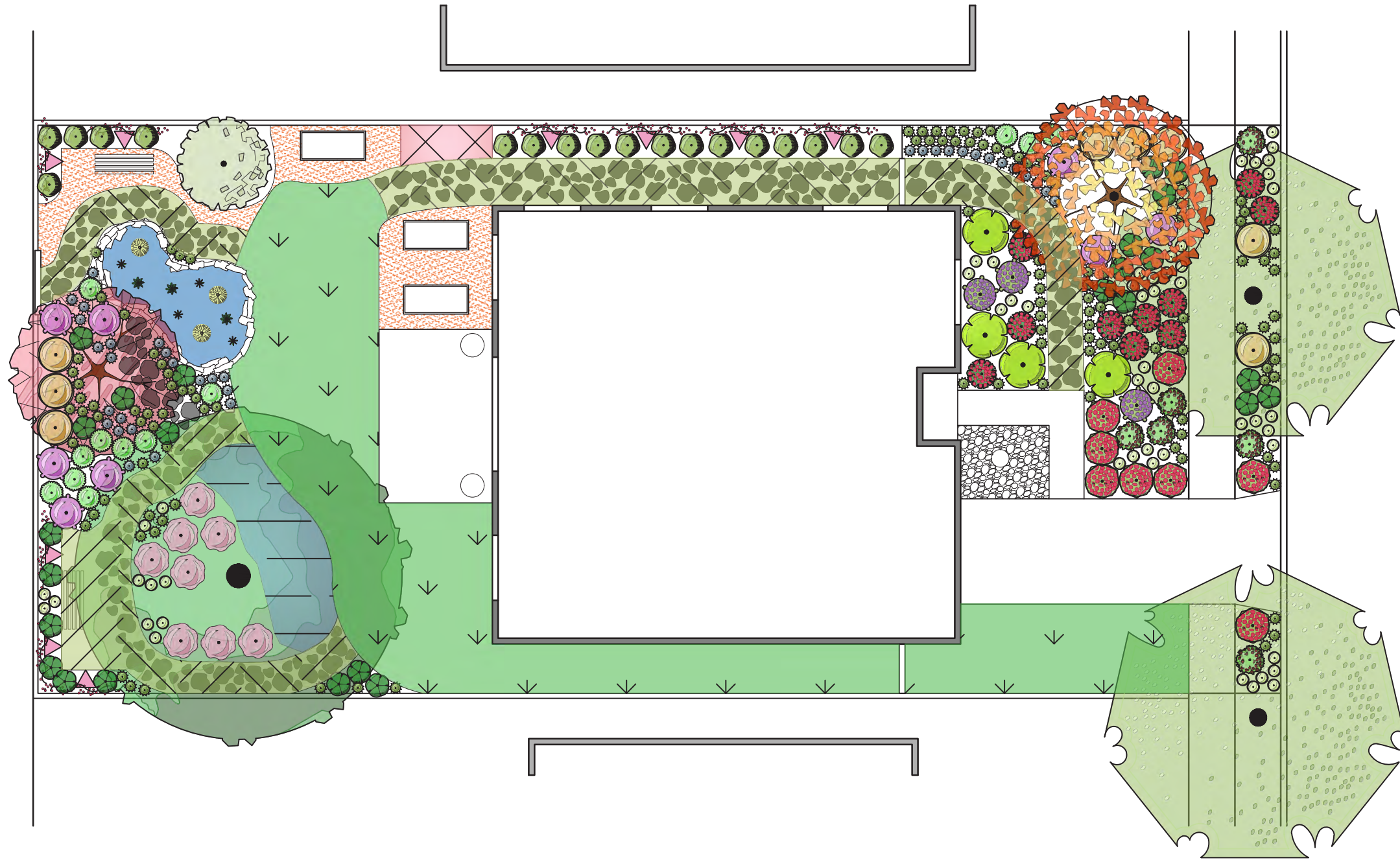
The sandy loam already on site is a good base for planting. The sand offers drainage benefits, and many of the native plants in this design prefer a fast drainage condition. For long term soil and plant health, a 1" layer of compost will be added to all planting areas, lightly tilled into the soil. Finally, a 3" layer of local, natural wood mulch will be added for water retention and weed suppression.

Maintenance

Maintenance of this garden includes removing dead brush and fallen leaves, deadheading flowers, trimming damaged parts, checking for pests, and controlling runners. The Fuyu persimmon tree, strawberry patch, and any edibles in the raised beds should be harvested promptly as ripe fruit appears. Dropped fruit is a garden mess that could invite pests.

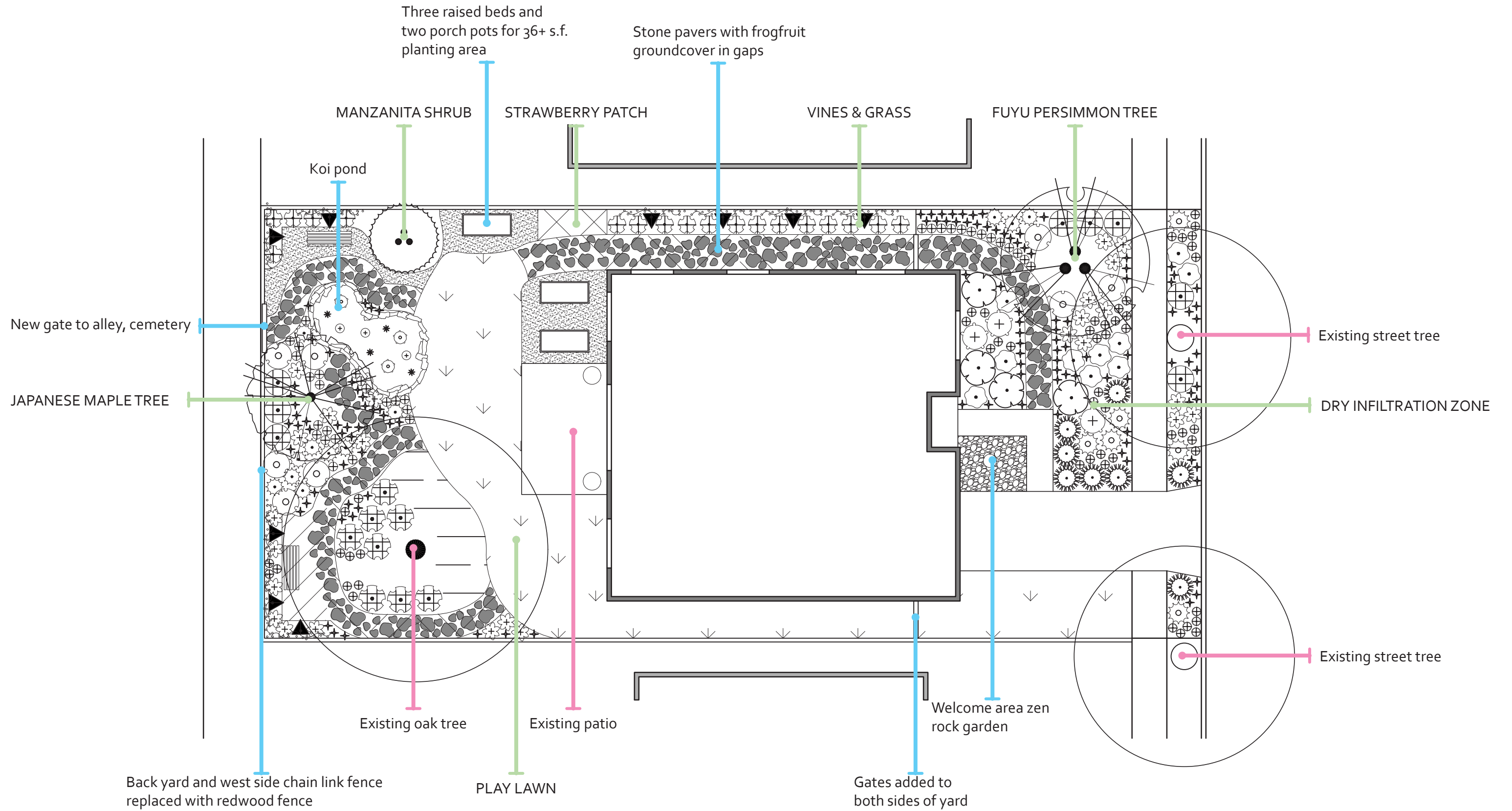
The ground material recommended for the raised bed area is DG. Newly installed DG will keep its look for a long time, but its dust may affect the plants around. Regular watering of these plants will minimize risk. After some years, weeds may appear through the DG, and they should be quickly pulled or torched.



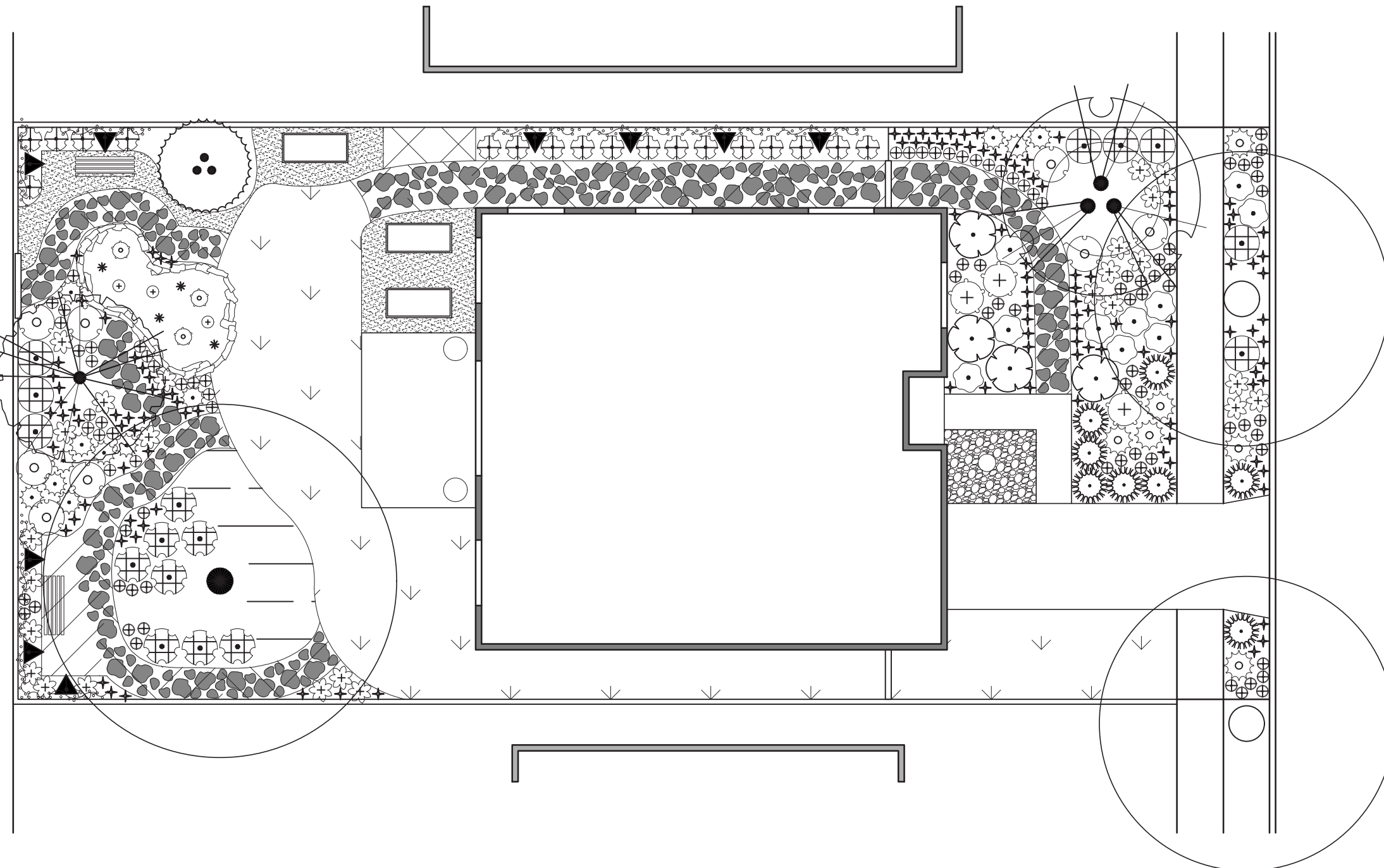


3/32" = 1'-0"

Planting Plan



3/32" = 1'-0"



PLANT SCHEDULE

SYMBOL	CODE	BOTANICAL / COMMON NAME	SIZE	CONTAINER	QTY	
TREES						
	STR TRE	--- / Existing Street Tree (mature size)	---		2	
	ACE PAL	Acer palmatum / Japanese Maple	5 gal.	Pot	1	
	DIO FUY	Diospyros kaki Fuyu / Fuyu Persimmon	5 gal.	Pot	1	
	QUE SPP	Quercus spp. / Existing Oak (mature size)	---		1	
SHRUBS						
	ACH MIL	Achillea millefolium / Common Yarrow	4"	Pot	53	
	AGA ALB	Agapanthus praecox orientalis 'Albus' / White African Lily	1 gal.	Pot	12	
	ARC BAK	Arctostaphylos bakeri Louis Edmunds / Louis Edmunds Baker's Manzanita	5 gal.	Pot	1	
	ARI PUR	Aristida purpurea / Purple Threeawn	4"	Pot	18	
	ASC CAL	Asclepias californica / California Milkweed	4"	Pot	3	
	AZO FIL	Azola filiculoides / Pacific Azala	4"	Pot	4	
	CAL ANA	Calystegia macrostegia 'Anacapa Pink' / Anacapa Pink Island Morning Glory	1 gal.	Pot	9	
	CAR BAR	Carex barbarae / Santa Barbara Sedge	4"	Pot	8	
	CAR TEX	Carex texensis / Texas Sedge	4"	Pot	124	
	CER DEM	Ceratophyllum demersum / Common Hornwort	4"	Pot	3	
	DIP PUN	Diplacus puniceus / Red Bush Monkeyflower	4"	Pot	10	
	ERI GRA	Eriogonum grande rubescens / Red Buckwheat	4"	Pot	8	
	ERI PAR	Eriogonum parvifolium / Cliff Buckwheat	4"	Pot	6	
	HEU MAX	Heuchera maxima / Island Alum Root	4"	Pot	25	
	IRI IRI	Iris douglasiana / Douglas Iris	4"	Pot	8	
	LUP CHA	Lupinus chamissonis / Dune Lupine	1 gal.	Pot	4	
	NYM ALB	Nymphaea x 'Albert Greenberg' / Albert Greenberg Water Lily	1 gal.	Pot	3	
	OPH NI4	Ophiopogon planiscapus 'Nigrescens' / Black Mondo Grass	4"	Pot	35	
	SAL SPA	Salvia spathacea / Hummingbird Sage	4"	Pot	8	
GROUND COVERS						
	CEA CNT	Ceanothus x 'Centennial' / Centennial Wild Lilac	4"	Pot	72' o.c.	3
	FES MAR	Festuca arundinacea 'Marathon II' / Marathon II Fescue	sod		821 sf	
	FRA ANA	Fragaria x ananassa / Strawberry	4"	Pot	18' o.c.	12
	PHY NOD	Phyla nodiflora / Lippia	flat		18' o.c.	236



Moderate zones under trees



Agapanthus praecox orientalis 'Albus'

Albus African lily

White summer blooms



Ophiopogon planiscapus 'Nigrescens'

Black mondo grass

Dark foliage with pink-white summer flowers



Iris douglasiana

Douglas iris

Purple flowers from winter through spring



Acer palmatum 'Emperor I'

Japanese maple

A classic seasonal star with bright red foliage that falls in winter



Moderate zones under trees



Carex barbarae

Valley sedge

Hardy, midsize, evergreen grass foliage



Heuchera maxima

Island alum root

Low-growing, shady native that blooms winter through spring



Carex texensis

Texas sedge

Evergreen bunches with delicate spring blooms



Diospyros kaki 'Fuyu'

Fuyu Asian persimmon

Sweet and spicy persimmons are ready in fall, leaves drop in winter

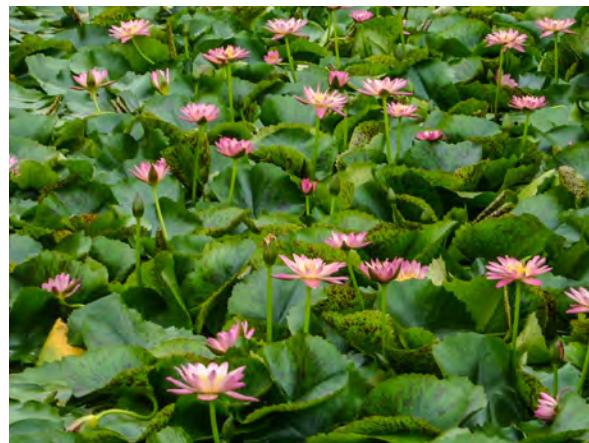
Pond plants



Azolla filiculoides

Mosquito fern

Dainty pink-green spots on the water



Nymphaea 'Albert Greenberg'

Albert Greenberg water lily

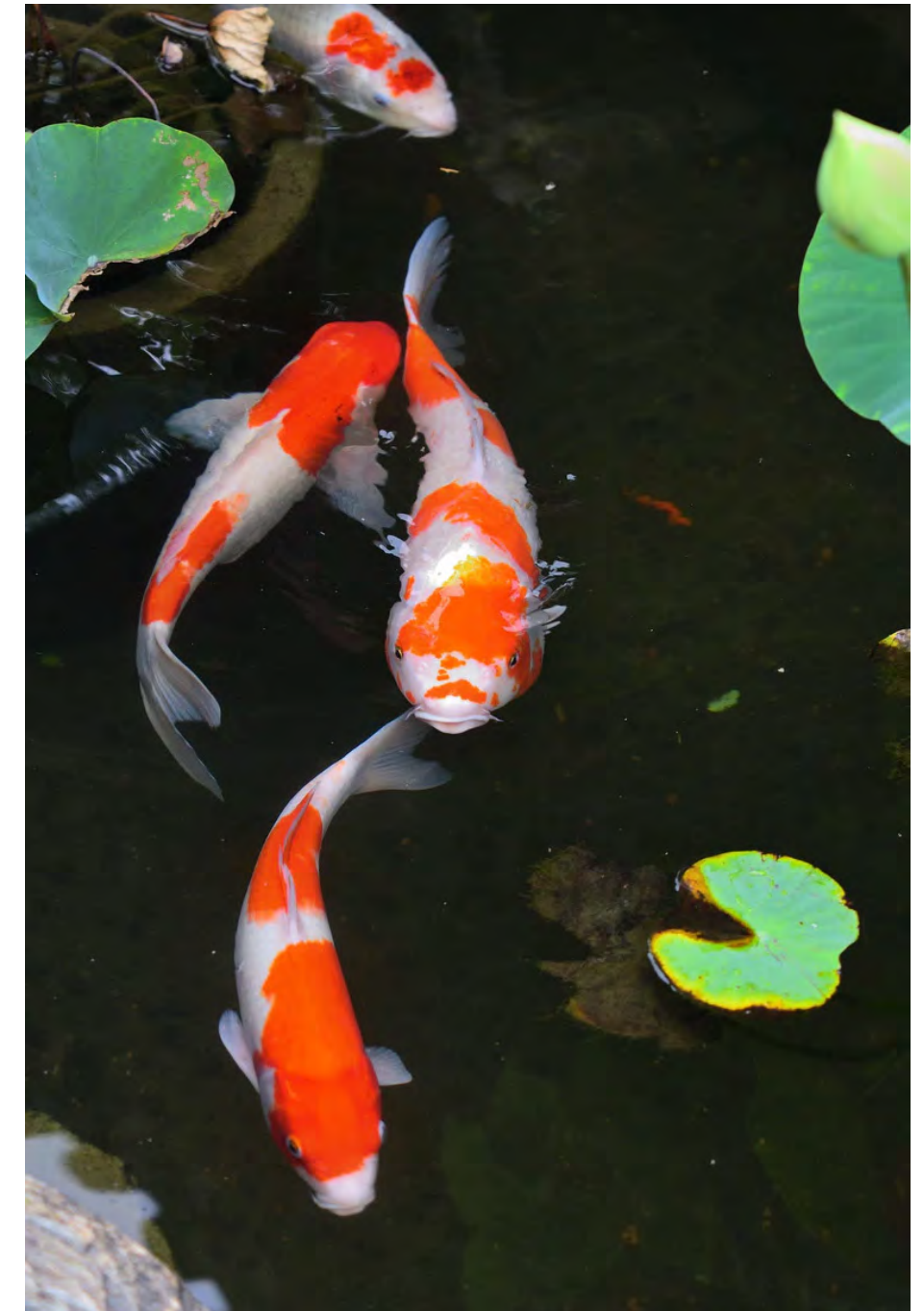
Day-blooming symbol of tranquility and spirituality



Ceratophyllum demersum

Hornwort

Familiar aquatic plant absorbs excess nutrients and adds oxygen to water



For optimal fish health, consult a koi pond specialist for design guidance. Koi fish may be adopted through Southern California Koi Rescue.

Fence line screen



Calystegia macrostegia 'Anacapa Pink'

Anacapa Pink island morning glory

Lush, evergreen vine that blooms pink and white spring through summer



Aristida purpurea

Purple three awn

Graceful and colorful evergreen grass takes full sun or part shade



Heuchera maxima

Island alum root

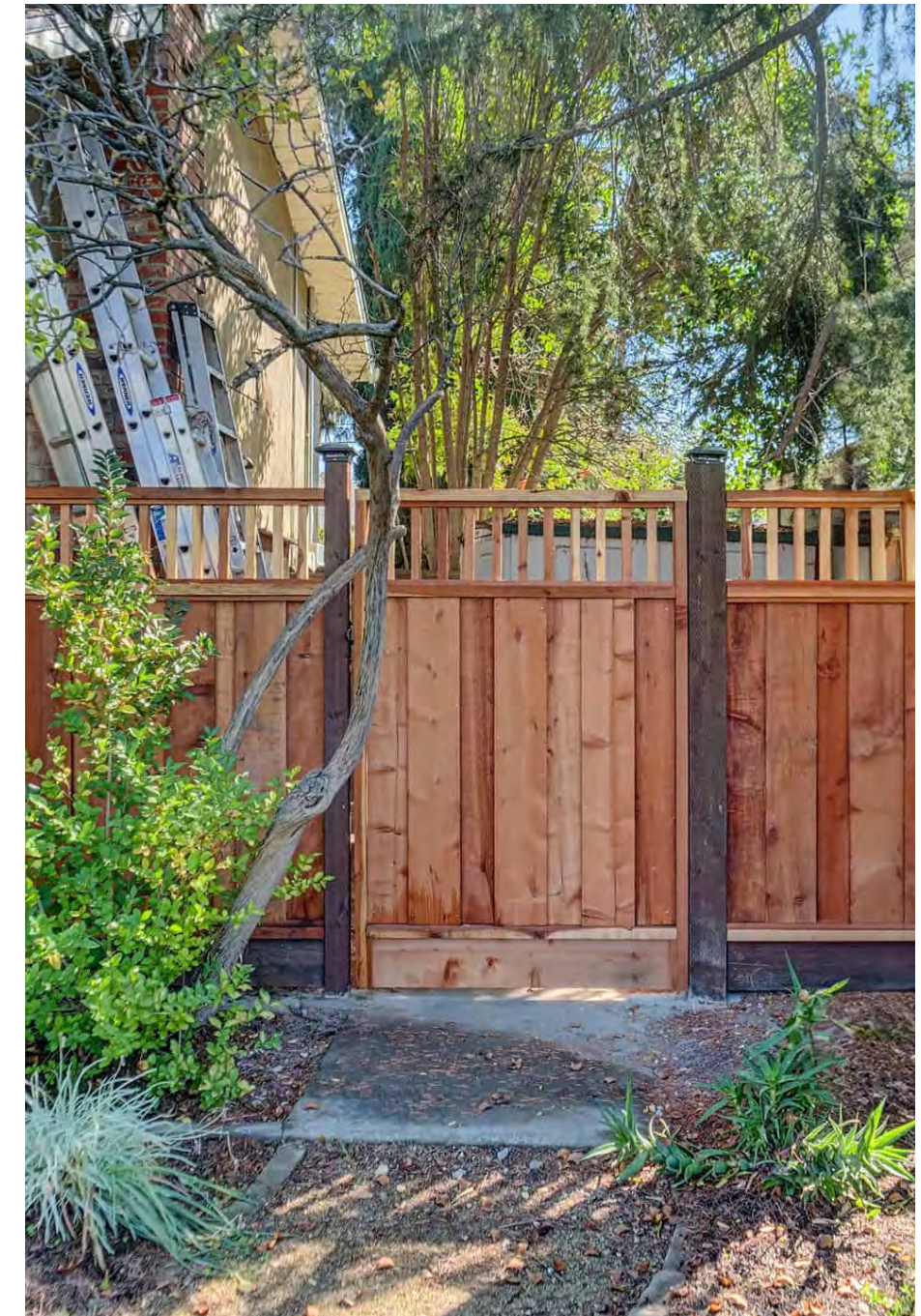
Low-growing, shady native that blooms winter through spring



Achillea millefolium

Common yarrow

Pretty white blooms in spring and summer



The simple, natural aesthetic of the redwood fence can be elevated by greenery.

Dry shade under oak



Salvia spathacea

Hummingbird sage

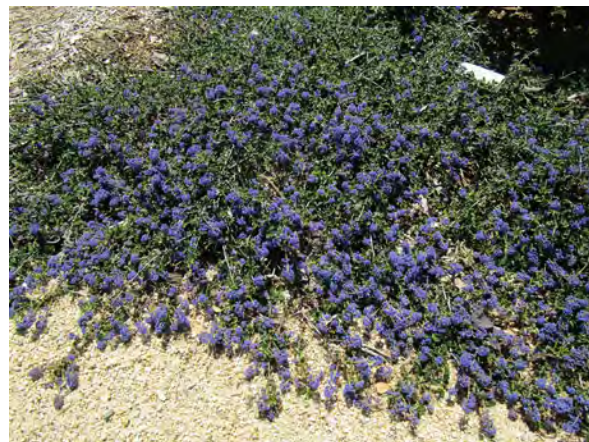
Fragrant, sprawling sage flowers winter through summer



Carex texensis

Texas sedge

Evergreen bunches with delicate spring blooms



Ceanothus 'Centennial'

Centennial ceanothus

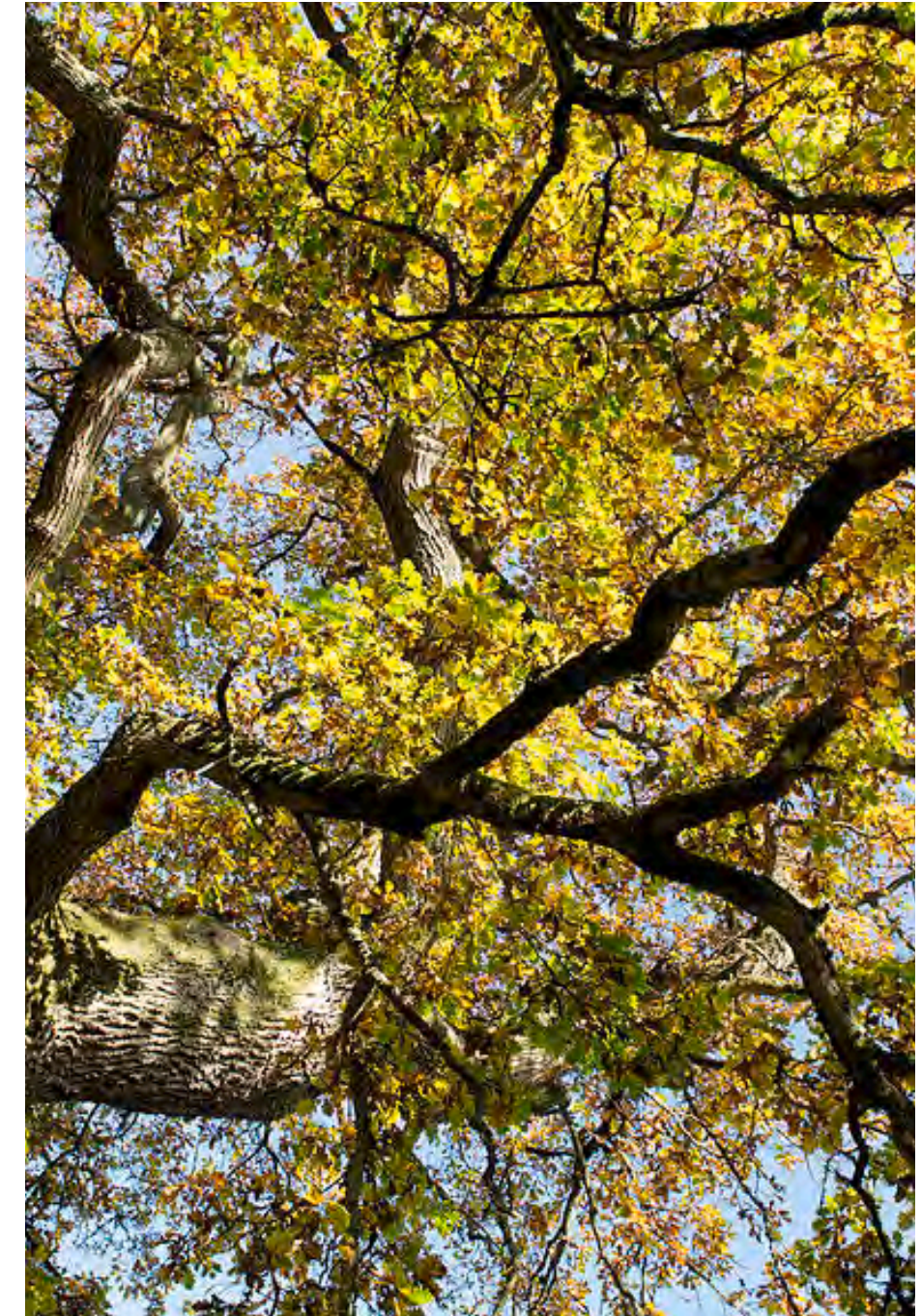
Carpet of bright blue blooms in winter



Achillea millefolium

Common yarrow

Pretty white blooms in spring and summer



The wildlife benefit of oaks in North America is unmatched by any other tree. A mature oak is a gift from the past.

Dry infiltration zone



Carex texensis

Texas sedge

Evergreen bunches with delicate spring blooms



Diplacus puniceus

Red bush monkeyflower

Bright red-orange flowers much of the year, may go summer dormant



Asclepias californica

California milkweed

Monarch butterfly host plant



Lupinus chamissonis

Dune bush lupine

A midsize evergreen lupine that blooms in spring and improves soil health

Dry infiltration zone



Eriogonum parvifolium

Sea cliff buckwheat

El Segundo Blue butterfly host plant



Eriogonum grande var. rubescens

Red-flowered buckwheat

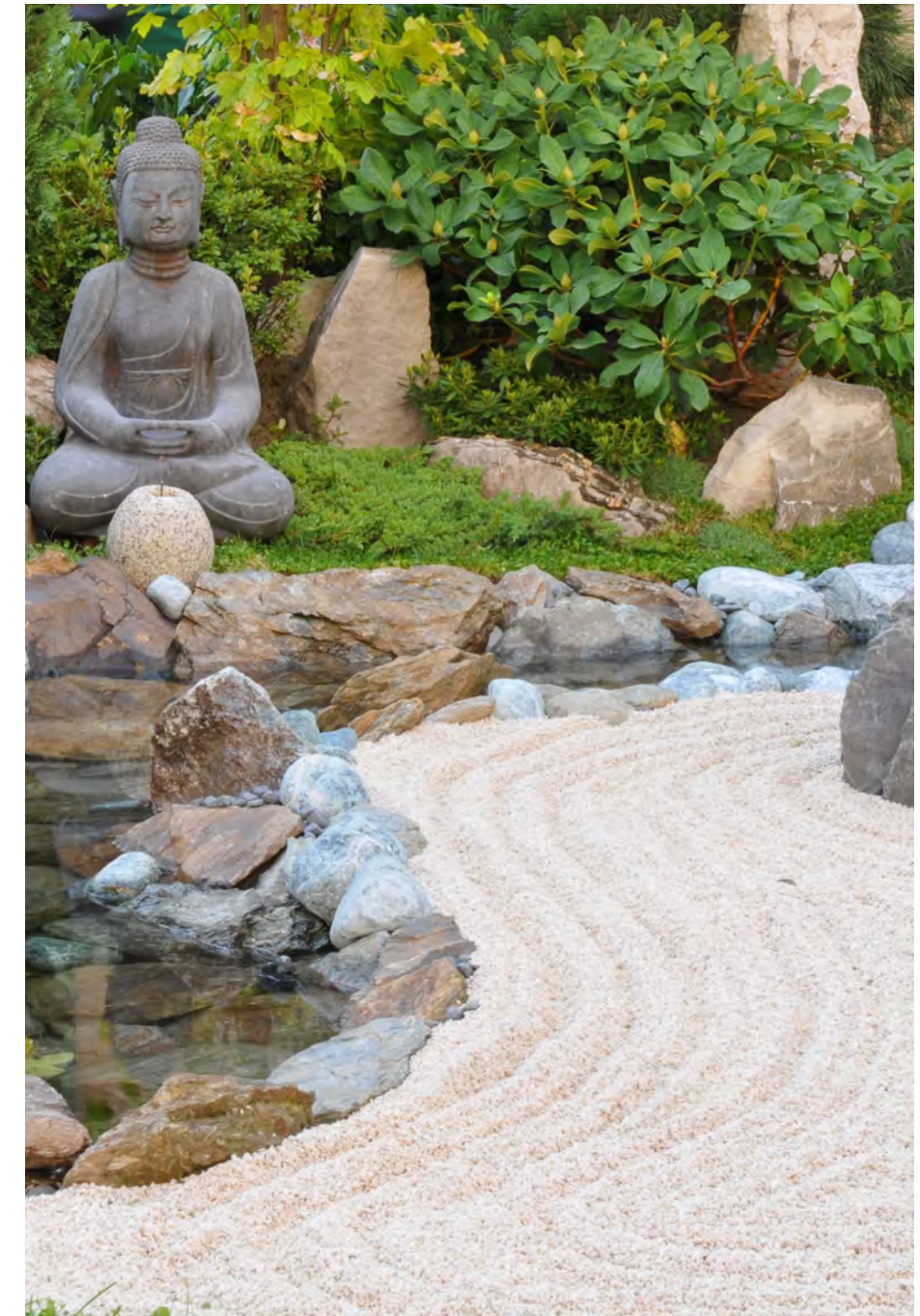
A low evergreen shrub that produces bright red blooms winter through summer



Achillea millefolium

Common yarrow

Pretty white blooms in spring and summer



The space between the driveway and the front door offers an opportunity for grounding and thoughtfulness before going in or out. Consider a zen rock garden or an inspiring statuette.

Active spaces



Phyla nodiflora

Frogfruit/lippia grows between the pavers that lead around the garden. Frogfruit is drought tolerant when established.



Fragaria spp.

Strawberries can grow year-round in California. Try to beat the critters to the fruit!



Vegetables, herbs, fruits, oh my!

There are many benefits to a kitchen garden. Besides fresh produce with flavors tailored to you, it provides a place to learn and explore plant life in a meaningful way.



Festuca arundinacea 'Marathon II'

A drought tolerant turf selection for Southern California.



Arctostaphylos bakeri 'Louis Edmunds'

Louis Edmunds Baker's manzanita

Stately 8' shrub with unique bark and branch pattern screen the quiet bench by the pond from the edible garden and lawn.

Plant List

	Botanical name	Common name	Family	Native range	Sun exposure	Seasonality	Height	Width	WUCOLS (Zone 3)	Flower/seed color	Bloom time	Soil type	Notes
Ground cover	<i>Phyla nodiflora</i>	Frogfruit	Verbenaceae	California	Full S-part SH	Evergreen	6"	1-3'	Low	White	Spring-summer-fall	Variable	
	<i>Fragaria</i> spp.	Strawberry	Rosaceae	Hybrid	Full S	Variety(s) chosen by client		Low	White	-		High organic matter, fast drainage	
	<i>Ceanothus</i> 'Centennial'	Centennial ceanothus	Rhamnaceae	California	Full S-part SH	Evergreen	6-12"	4-5'	Low	Blue	Winter	Fast drainage	
	<i>Festuca arundinacea</i> 'Marathon II'	Marathon II dwarf fescue	Poaceae	Eurasia	Full S-part SH	Evergreen	Mow to 2-3"	NA	Moderate*/Drought tolerant	NA	NA	Variable	
Shrubs	<i>Carex texensis</i>	Texas sedge	Cyperaceae	Eastern US	Part SH	Evergreen	9"	1'	Moderate/Drought tolerant	Green-brown	Spring	Variable	
	<i>Ophiopogon planiscapus</i> 'Nigrescens'	Black mondo grass	Asparagaceae	Japan	Part SH	Evergreen	8"	1'	Moderate	White-pink	Summer	Variable	
	<i>Carex barbarae</i>	Valley sedge	Cyperaceae	California	Part SH	Evergreen	2-3'	3'	Low	Cream-purple	Summer	Variable; Slow drainage preferred	
	<i>Achillea millefolium</i>	Common yarrow	Asteraceae	North America	Variable	Summer semi-deciduous	1-3'	6-18"	Low	White	Spring-summer	Variable; No standing water	
	<i>Asclepias californica</i>	California milkweed	Apocynaceae	California	Full S	Summer semi-deciduous	3'	3'	Very low	Lavender-pink	Spring-summer	Variable	
	<i>Eriogonum parvifolium</i>	Sea cliff buckwheat	Polygonaceae	California	Full S-part SH	Evergreen	1-3'	2-3'	Very low	Pink-white	Year-round	Fast/medium drainage	
	<i>Eriogonum grande</i> var. <i>rubescens</i>	Red-flowered buckwheat	Polygonaceae	California	Full S	Evergreen	8-18"	3'	Very low	Cream-red	Spring-summer-fall	Slow drainage	
	<i>Salvia spathacea</i>	Hummingbird sage	Lamiaceae	California	Variable	Evergreen	1-3'	3'	Low	Pink-red	Winter-spring-summer	Variable; Medium drainage	
	<i>Heuchera maxima</i>	Island alum root	Saxifragaceae	California	Variable	Evergreen	1-2'	2'	Low	Pink-white	Winter-spring	Fast/medium drainage	
	<i>Iris douglasiana</i>	Douglas iris	Iridaceae	California	Variable	Evergreen	1-2'	2-4'	Low	Blue-purple	Winter-spring	High organic matter	
Shrub-Focal	<i>Aristida purpurea</i>	Purple three awn	Poaceae	California	Full S-part SH	Evergreen	2-3'	2'	Very low	Purple-red	Winter-spring	Fast/medium drainage	
	<i>Diplacus puniceus</i>	Red bush monkeyflower	Phrymaceae	California	Full S-part SH	Summer semi-deciduous	1-2'	2-3'	Very low	Red-orange	Winter-spring-summer	Medium drainage	
	<i>Agapanthus praecox</i> <i>orientalis</i> 'Albus'	Albus African lily	Amaryllidaceae	South Africa	Full S-part SH	Evergreen	3-4'	2-3'	Moderate	White	Summer	Moist, Fast/medium drainage	Low toxicity to dogs
Aquatic	<i>Lupinus chamissonis</i>	Dune bush lupine	Fabaceae	California	Full S-part SH	Evergreen	4'	4'	Low	Blue-purple	Spring	Fast drainage	
	<i>Arctostaphylos bakeri</i> 'Louis Edmunds'	Louis Edmunds Baker's manzanita	Ericaceae	California	Full S-part SH	Evergreen	8'	8'	Low	Pink	Spring	Variable	
	<i>Ceratophyllum demersum</i>	Hornwort	Ceratophyllaceae	Cosmopolitan				Submerged, evergreen, grows to pond depth/size					
Vine	<i>Nymphaea</i> 'Albert Greenberg'	Albert Greenberg water lily	Nymphaeaceae	Hybrid	Full S-part SH	Evergreen	Pond depth	Leaf 18' -		Pink-yellow	Summer	Submerged	
	<i>Azolla filiculoides</i>	Mosquito fern	Salvinaceae	California	Part SH	Evergreen	1"	1"	-	-	-	Submerged	
Tree	<i>Calystegia macrostegia</i> 'Anacapa Pin	Anacapa Pink island morning	Convolvulaceae	California	Full S-part SH	Evergreen	20'	20'	Very low	White-pink	Spring-summer	Variable	Seeds have low toxicity to dogs
	<i>Acer palmatum</i> 'Emperor I'	Japanese maple	Sapindaceae	East Asia	Part SH-full S	Winter deciduous	15'	15'	Moderate	Red foliage	Inconspicuous bloom	Fast/medium drainage	Likes high organic matter
	<i>Diospyros kaki</i> 'Fuyu'	Fuyu Asian persimmon	Ebenaceae	East Asia	Full S	Winter deciduous	20-30'	20-30'	Moderate	Orange fruit	Fall harvest	Fast/medium drainage	Does not tolerate high salinity

WUCOLS (Zone 3)* = There is no rating for this species in the WUCOLS Plant Searchable Database. This rating is estimated from other online sources.