



UCLAX LANDSCAPE ARCHITECTURE  
DG3 - SPRING 2025  
TONGVA PARK STUDY  
JAMES KANG

01. HISTORY & DESIGN P.04

02. CONCEPT P.07

03. CIRCULATION P.08

04. PLANT MATERIALS P.10

05. WATER FEATURES P.13

06. SEATING & PROGRAM P.14

07. SITE PLAN PROGRESS P.16

08. FOCAL POINT P.18

09. BIO P.21

# CONTENTS

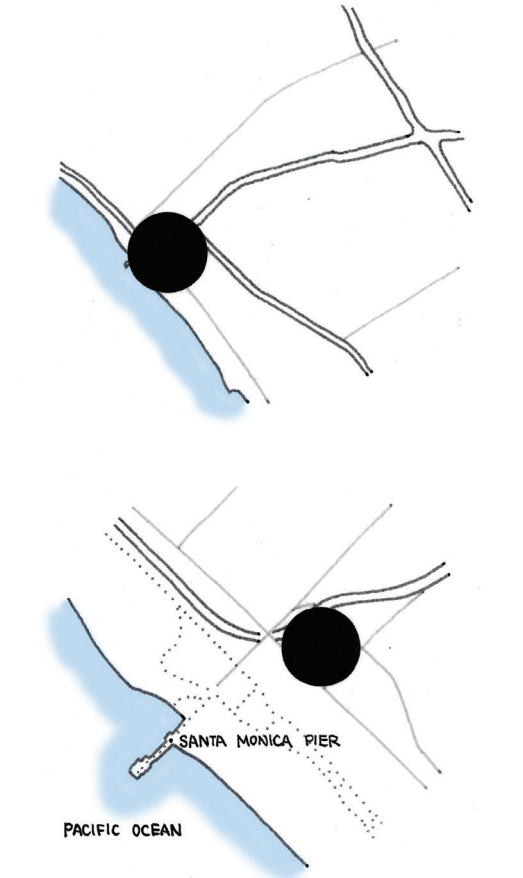
“

The point of looking for beauty and something fresh in design isn't just a concern with the form or an aesthetic response but is more in terms of how it reconditions and recalibrates your experience and what you're doing.

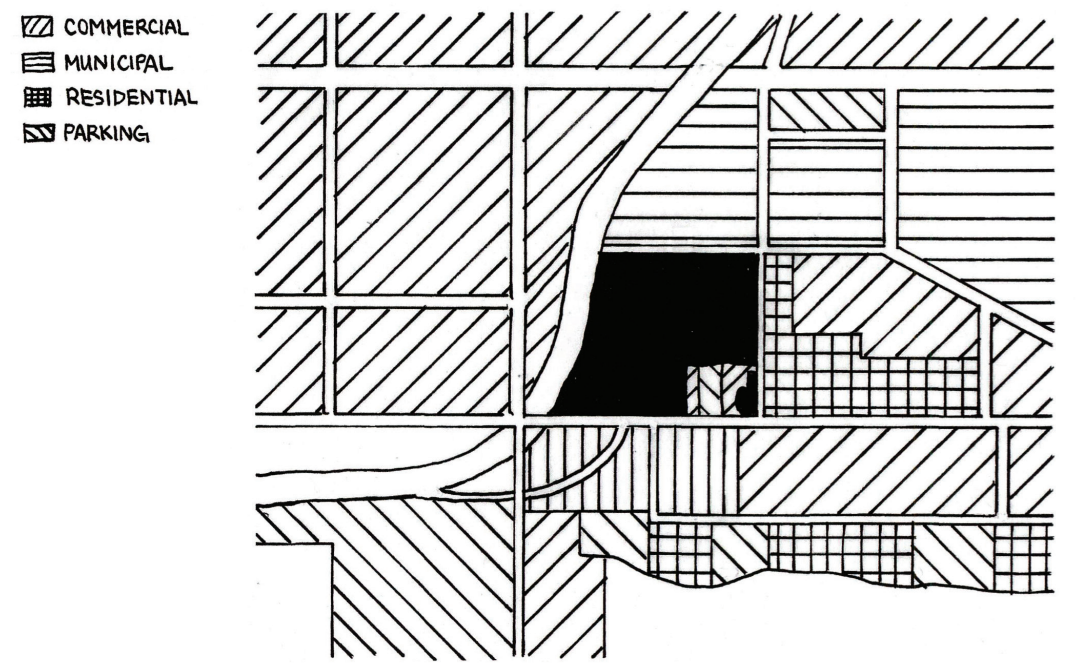
James Corner

# 01 HISTORY & DESIGN

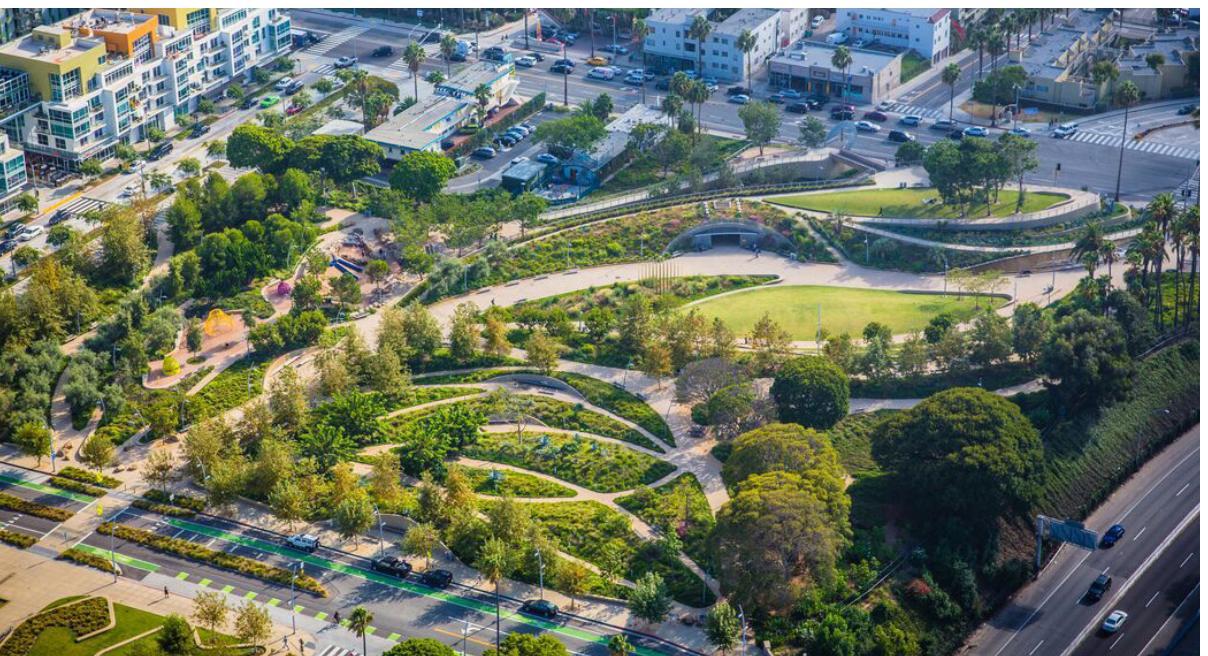
Tongva Park is a modern, urban public park located in Santa Monica, California, designed to serve as both a green oasis and a cultural landmark. Named after the Tongva people, the park pays tribute to the Native American tribe that originally inhabited the region long before European settlers arrived. The Tongva were known for their rich culture, knowledge of the land, and close connection to the natural environment. The park's design aims to honor their legacy while offering a contemporary space for the community to enjoy, making it a significant example of how urban design can reflect cultural history.

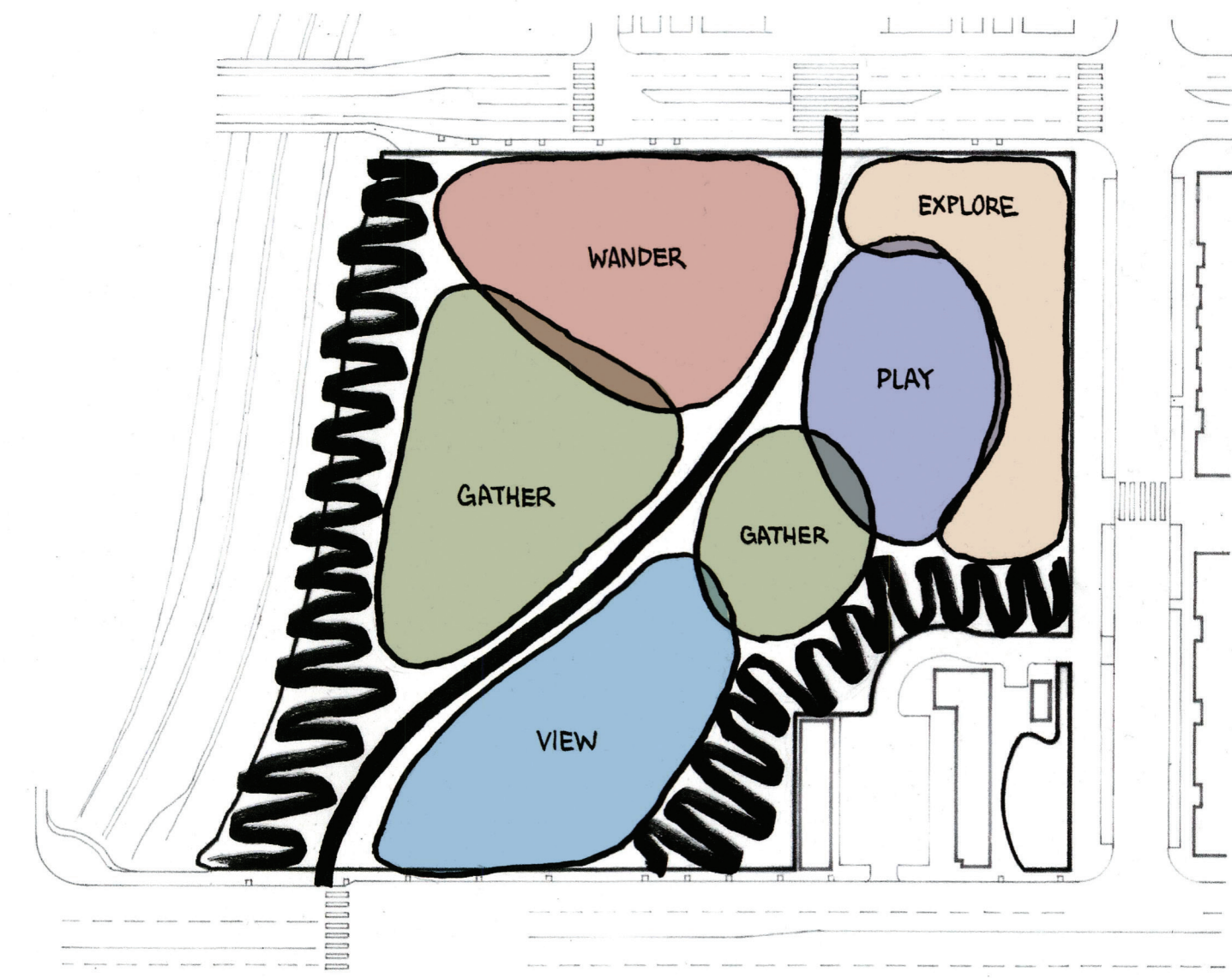


LOCATION MAPS ⊕ NTS



CONTEXT ⊗ NTS





CONCEPT DIAGRAM



# 02 CONCEPT

One of the most striking features of Tongva Park is its innovative landscape design. Created by the renowned landscape architecture firm James Corner Field Operations—famous for their work on the High Line in New York City—the park showcases a blend of natural elements and modern design. The park’s rolling hills and curved pathways invite visitors to wander, with each turn revealing new perspectives of the park’s features. The terrain varies, with areas of raised hills that provide sweeping views of the surrounding city and ocean, and sunken gardens that create a sense of intimacy and seclusion. This topographical design not only creates visual interest but also fosters a sense of discovery and engagement with the space.

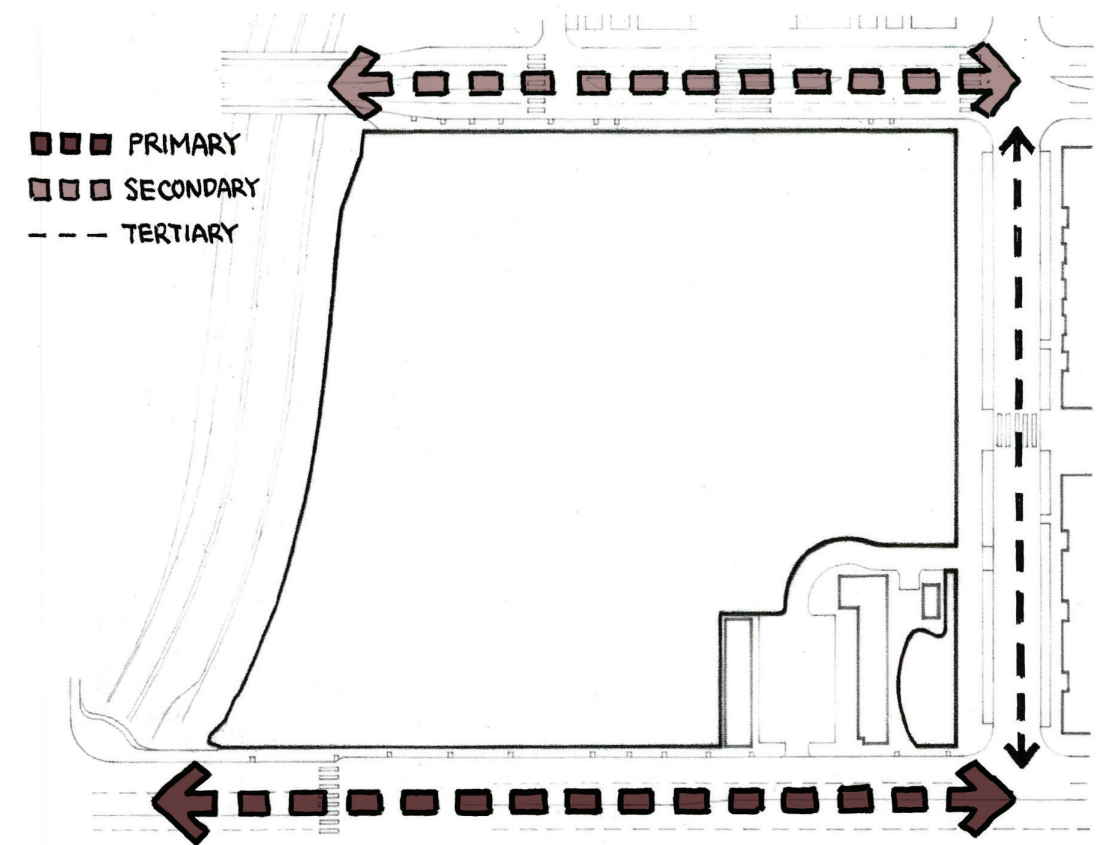
# 03 CIRCULATION



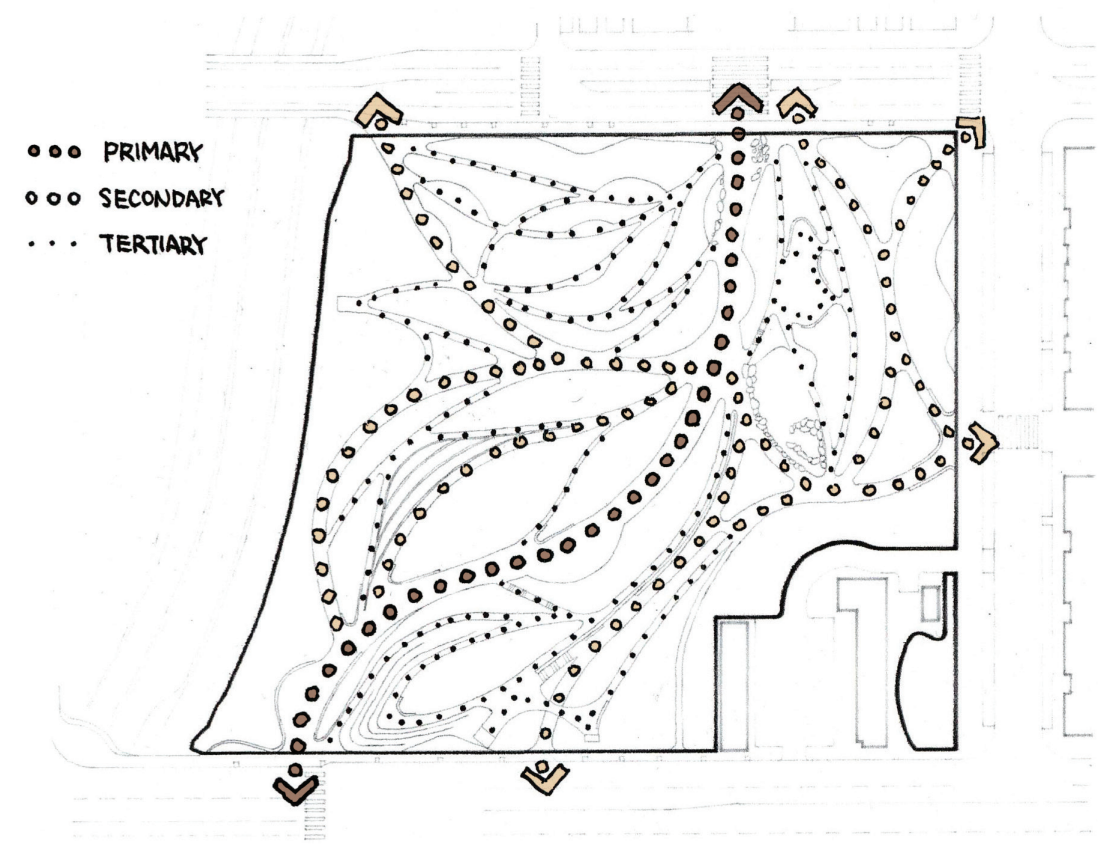
Vehicular circulation in and around Tongva Park is designed with both accessibility and safety in mind. The park is located in a highly urbanized area, which means that it is bordered by several streets, including Ocean Avenue and Main Street.



The park features a network of meandering pedestrian pathways that wind through the site, offering visitors the freedom to wander and explore different areas of the park. These paths are not straight or linear but are curvilinear, encouraging visitors to slow down, take their time, and appreciate the landscape.



VEHICULAR CIRCULATION



PEDESTRIAN CIRCULATION



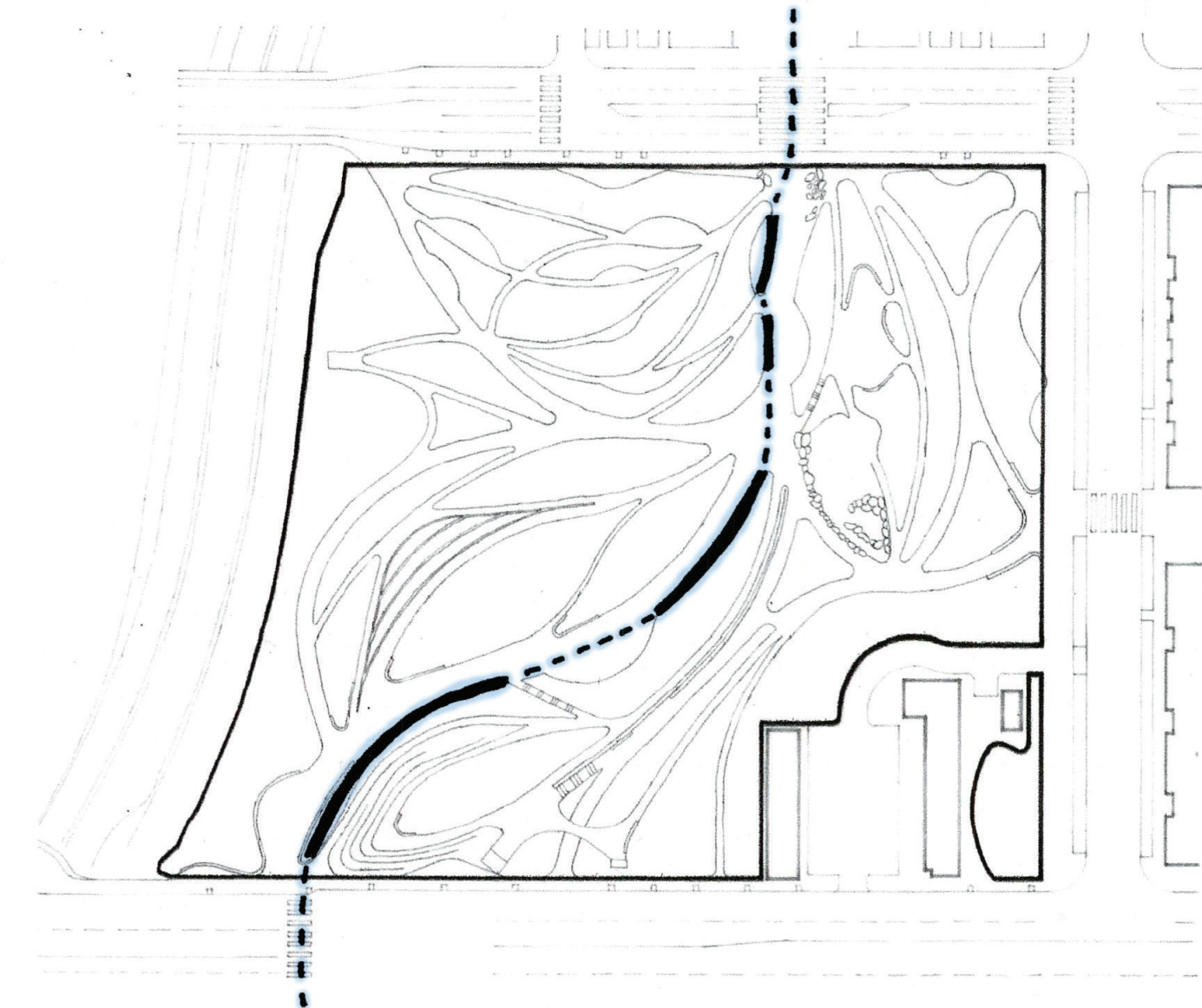
# 04 PLANT MATERIALS



The park's design is also a celebration of Southern California's native plants and natural environment. The landscaping incorporates drought-tolerant plants native to the region, which are not only environmentally sustainable but also tie the park to the area's ecological heritage. By using native species, the park minimizes water consumption, a particularly important feature in California's water-scarce climate. The focus on local flora helps create a habitat for birds and insects, further enhancing the park's connection to nature.



# 05 WATER FEATURES



WATER CIRCULATION



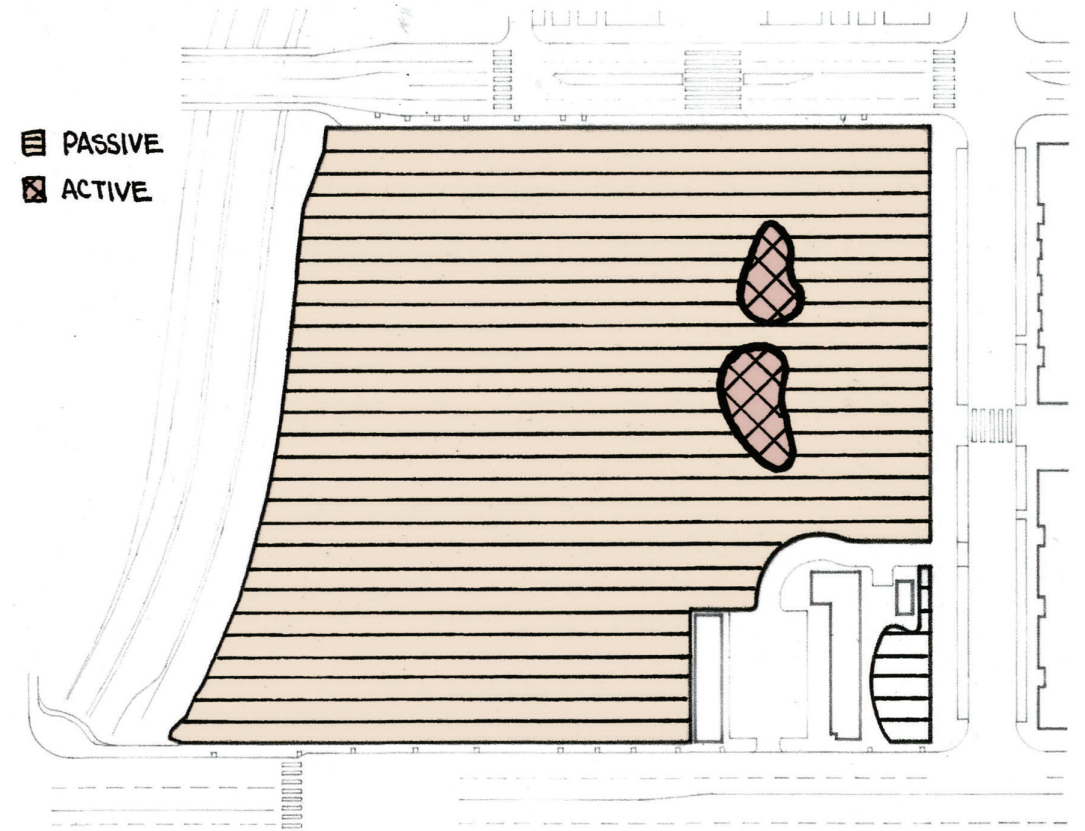
Water features in Tongva Park are more than just decorative elements; they play an integral role in shaping the park's atmosphere. The sound of running water creates a calming backdrop for visitors, helping to drown out the noise of the nearby city. Whether it's the gentle trickling of a stream, the interactive splash of a fountain, or the peaceful stillness of a reflecting pool, the water elements help foster a sense of peace and connection with nature.



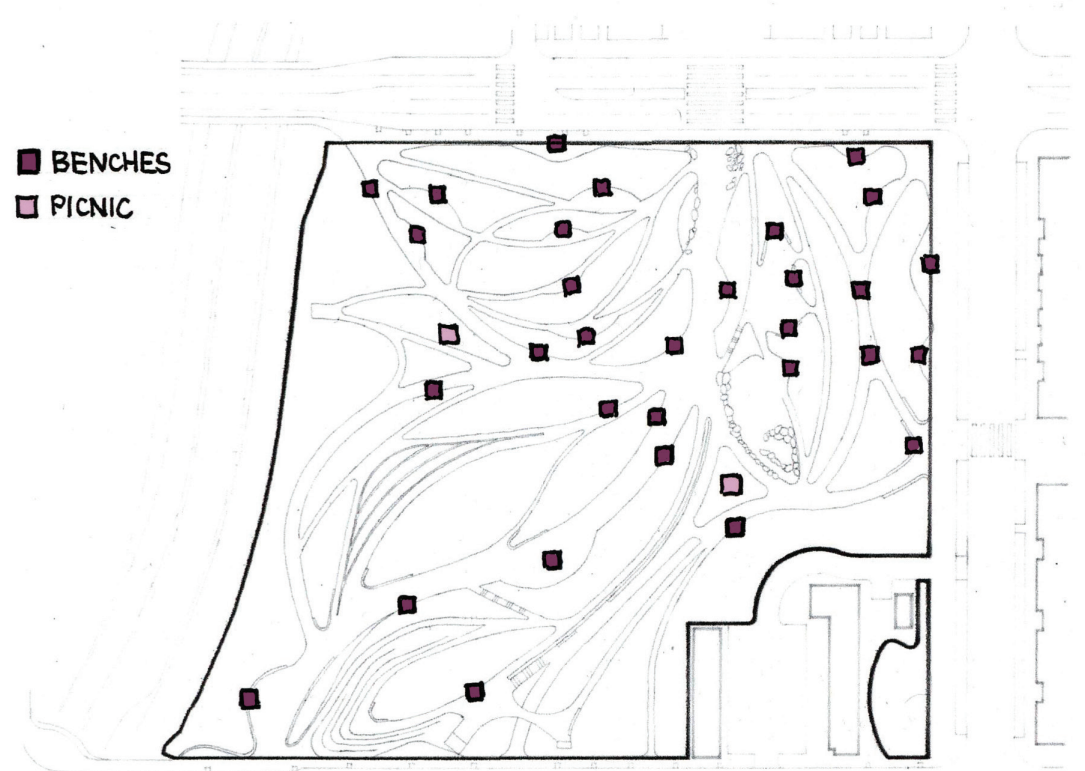
# 06 SEATING & PROGRAM



Tongva Park is also designed to be a family-friendly space, with a variety of amenities that cater to children and families. There are two distinct playgrounds designed for different age groups, with interactive equipment that promotes imaginative play and physical activity. These play areas are strategically located to provide a safe and enjoyable environment for kids, while also allowing parents to relax and enjoy the surroundings. For those seeking relaxation, the park offers plenty of shaded seating areas, including benches and picnic tables, where people can sit and unwind. The park is a place for everyone to gather, whether for a quick break during a busy day or for a leisurely afternoon outing.



PROGRAM

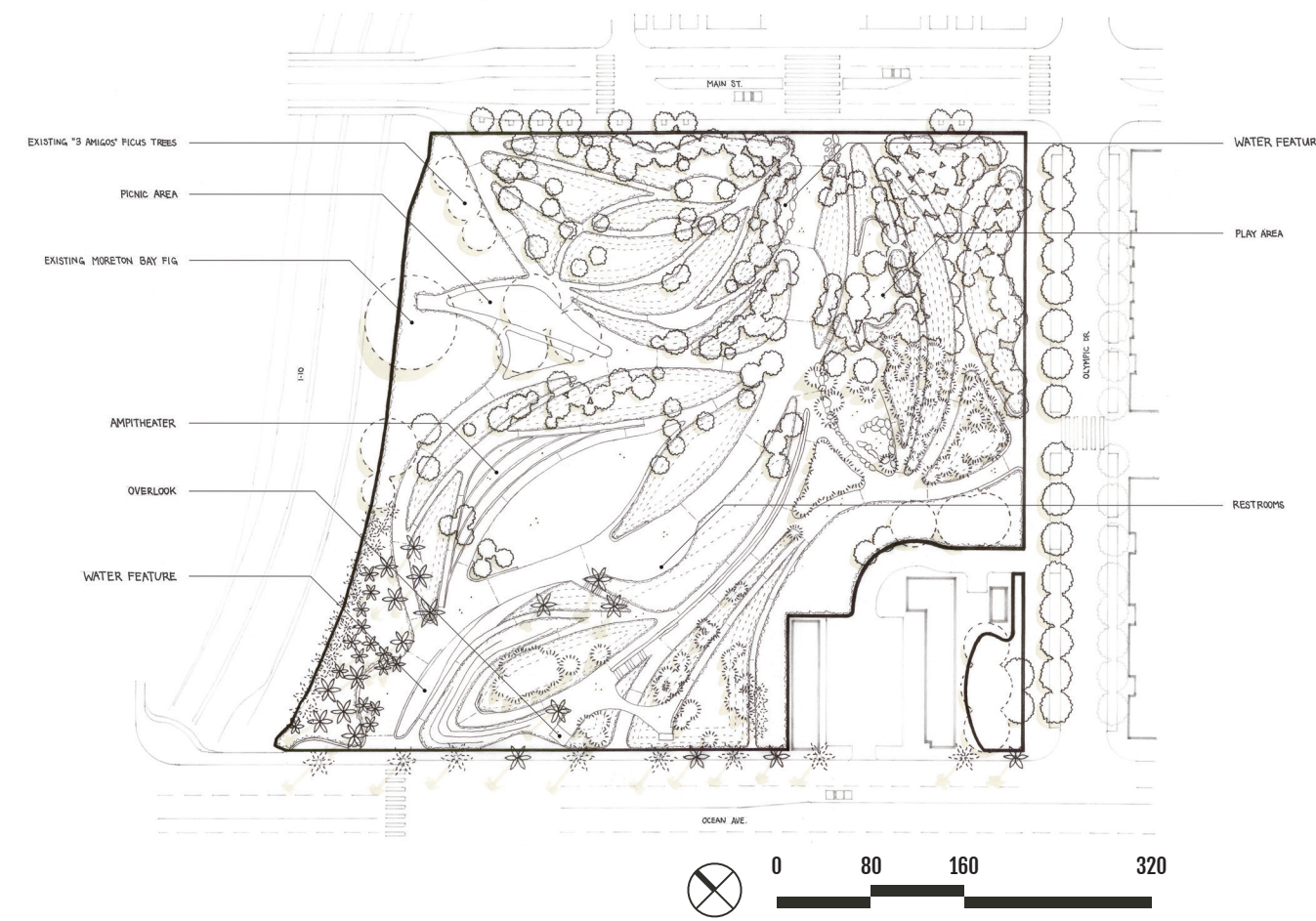


SEATING



# 07 SITE PLAN PROGRESS

The following 3 plans showcases the process and progress from Design Graphics 1 through 3. Building upon one another, I learned how to draw with pencil and pen, organize hierarchy of information using line weight, utilize different styles of symbols for tree varieties as well as vehicular and pedestrian circulation. During this class series I also strengthened my knowledge and skills for how to use markers and digital paint.

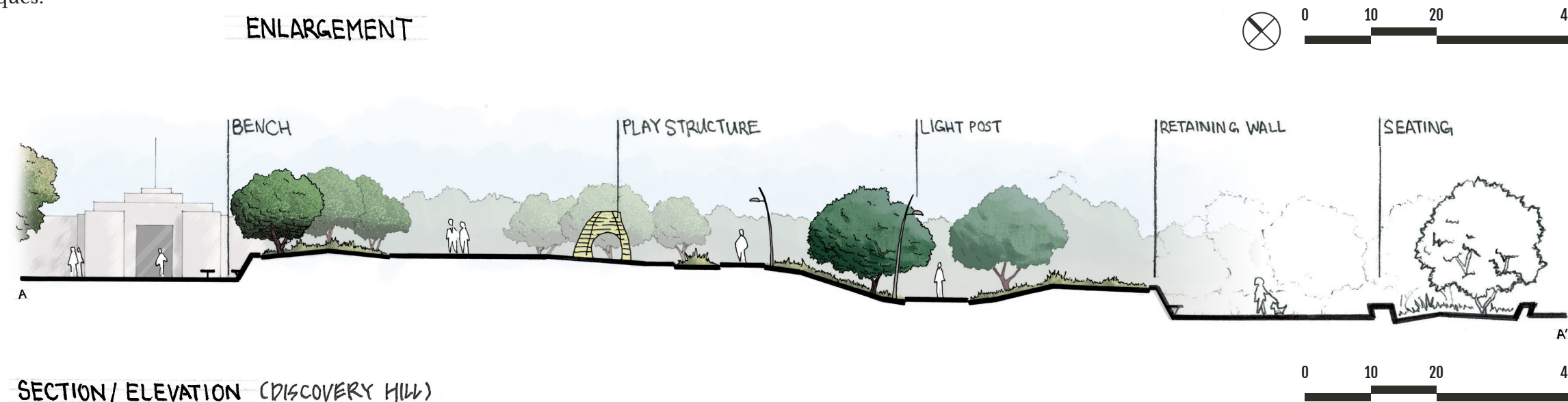


# 08 FOCAL POINT

In our enlargement assignment, I chose to explore the north-east quadrant of the park as this area showcased multiple subjects to study. This area of the park represented a water feature, children's play area, different elevation, unique types of pathways, and various types of trees. As a challenge for myself I wanted to practice drawing and shading these areas to improve my techniques.



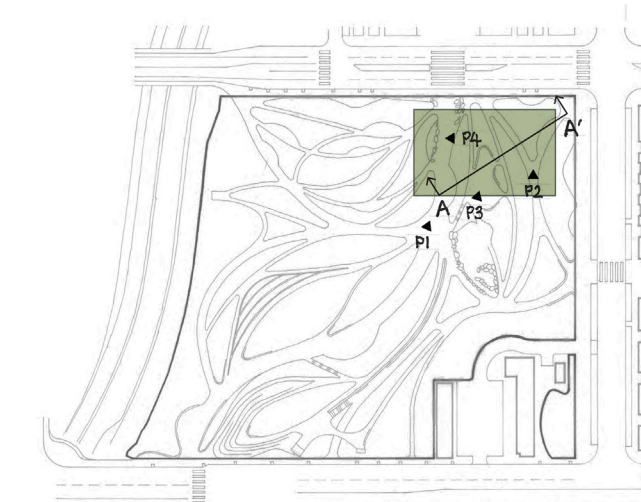
ENLARGEMENT



SECTION/ ELEVATION (DISCOVERY HILL)



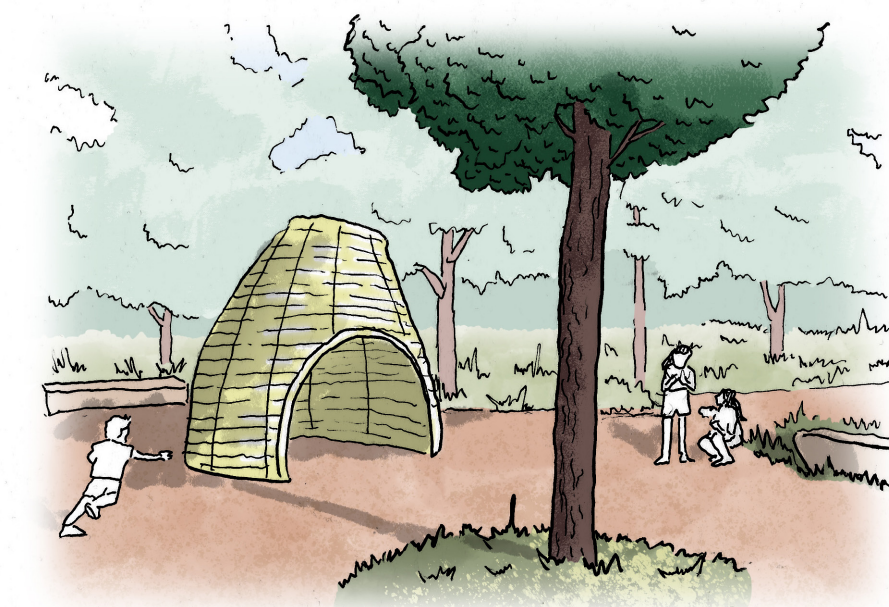
PERSPECTIVE 1 (NOPE-SEATING AREA)



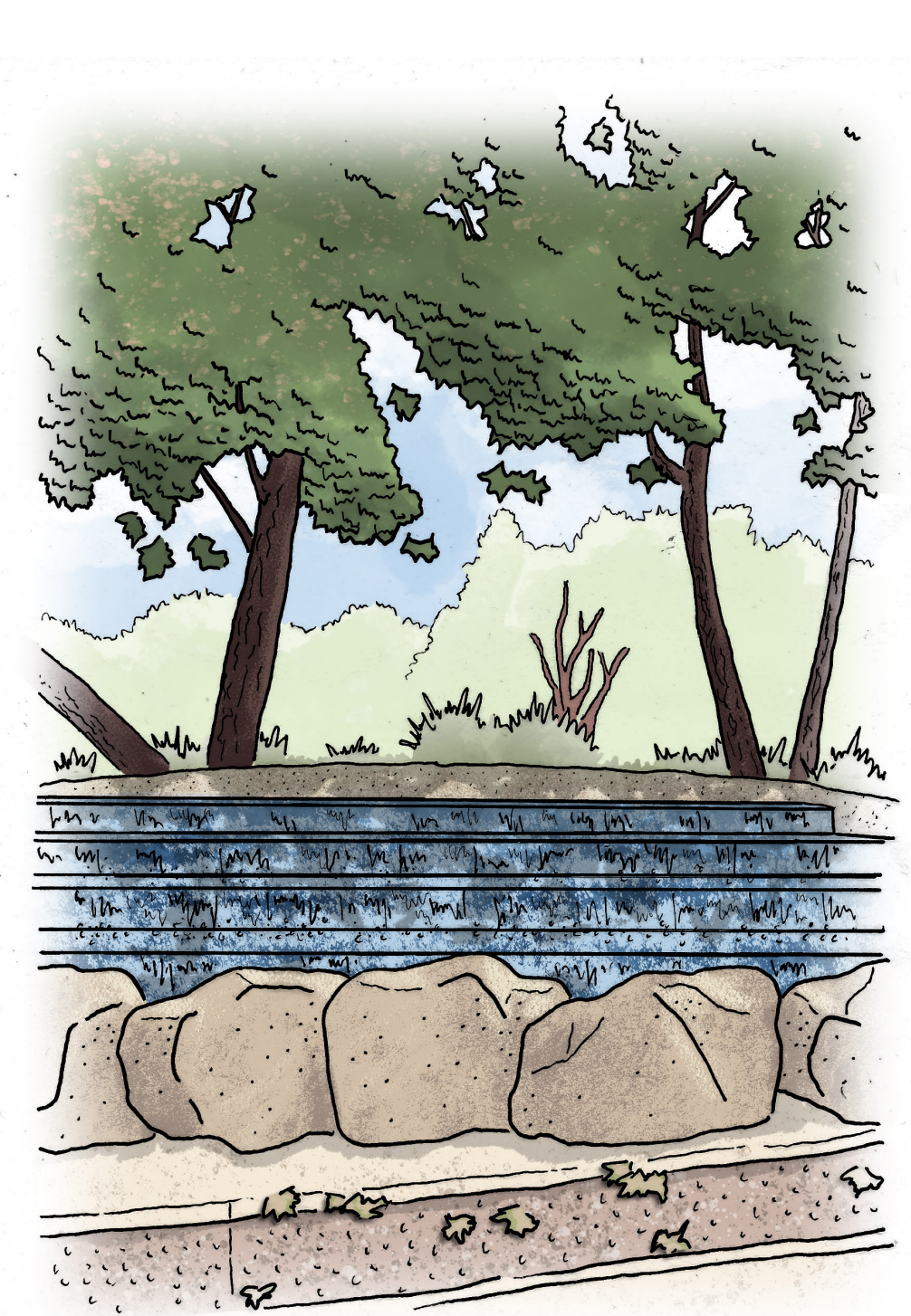
KEY MAP



PERSPECTIVE 2 (MEANDERING PATH)



PERSPECTIVE 3 (CHILDREN PLAY AREA)



PERSPECTIVE 4 (WATER FEATURE)



MISC. GROUND MATERIALS



Born in Oakland and grown up in Korea, I was constantly surrounded by nature. From hiking various trails to growing up with a small family-run farm, I've always learned to appreciate the process of growing our own vegetables. When I moved to America at the age of 16, I always strove to continue to go on hikes, camp, backpack and learn to grow my own food - ultimately surround myself with nature. With Landscape Architecture I dream to continue that journey and provide people with more accessible nature within their communities and even their homes.

## IMAGE CREDIT

Some photos are from Google and Pinterest, but most of the images as well as icons are taken and created by James Kang.



## GOOD SHOW!

Special thanks to Jeanette and my cohort—without your constant support and inspiring work my motivation and designs would not be the same. Thank you for pushing me to be better!

