

AZUSA WILDERNESS PARK

GATEWAY TO THE SAN GABRIEL NATIONAL MONUMENT

Heather Wu



TABLE OF CONTENTS

History	3	Master Plan	34-35
Location.....	4	Enlargements, Perspectives, Sections ...	36 - 45
Site Overview	5	Bibliography.....	46
Context.....	6	Thank You.....	47
Existing Condition.....	7		
Site Analysis.....	8-16		
Constraints and Opportunities.....	17-18		
Site Photos.....	19-20		
Precedent Case Study 1-5.....	21-25		
Goals and Objectives	26		
Mood Board.....	27		
3 Design Concepts Metaphors.....	28		
Bubble Concepts	29-31		
Bubble Diagram	32		
Illustrative process	33		

SITE HISTORY



The land of Azusa, California originally belonged to the Gabrielino-Tongva Tribe, the Indigenous people of this area. The village of Asuksavit or Asuksa-Nga was located near the current project site and was an important center for trade and connection with nearby mountain clans, including Japchivitam and Amutskupeatam. Asuksavit is one of the oldest known villages in Los Angeles County, dating back nearly 10,000 years.

LEGEND

- Tongva - Kizh (Gabrieleño)
- Chumash
- Fernandeano Tataviam
- Cupeño

19,000 YEARS AGO

The first humans arrived in Southern California. Indigenous tribes live and thrived throughout the canyon and mountains for thousands of years. The village located in today's Azusa was called Asuksa-Nga.

1841 MEXICAN ERA

First Mexican settlement in Azusa - Rancho el Susa under land grant from Alta California. Ended after Mexican-American War from 1846-1848

1887 AZUSA FOUNDING

The City of Azusa was founded in 1887 and incorporated as a general law city on December 29, 1898.

2014 NATIONAL MONUMENT STATUS

President Obama issues a proclamation to establish the National Monument.

1770 MISSION ERA

Indigenous tribes were forcibly removed from their land and forced into assimilation

1842 GOLD RUSH

Mining started in the canyons and peaked in 1861

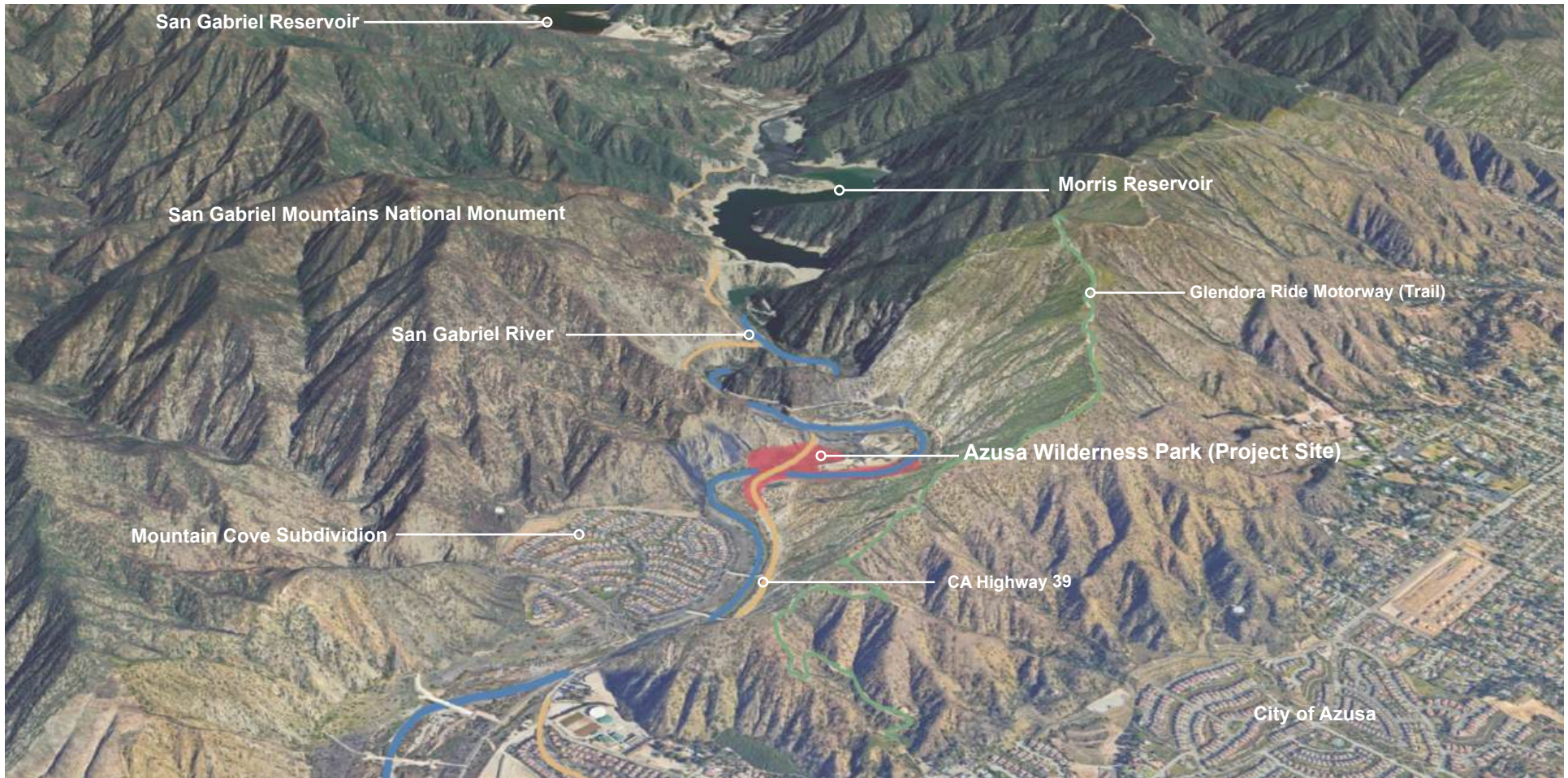
1933 ECOLOGICAL EXPLORATION

San Dimas Experimental Forest is established as an ecological and hydrological research site

2024 MONUMENT EXPANSION

President Biden Expands the monument by 106,000 Acres

SITE LOCATION

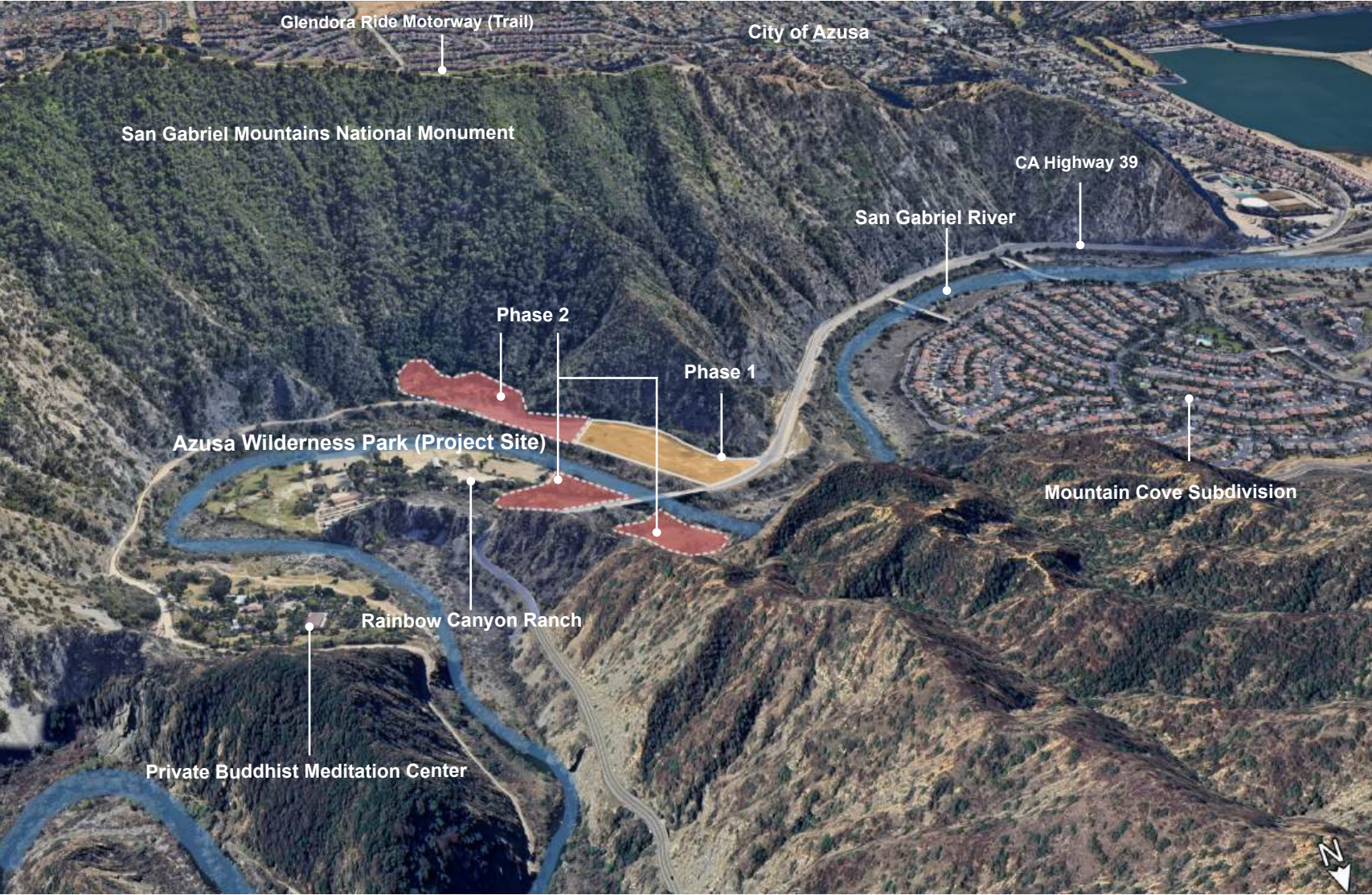


National Monument: A historic or geographical area set aside by a national government and maintained for public use.

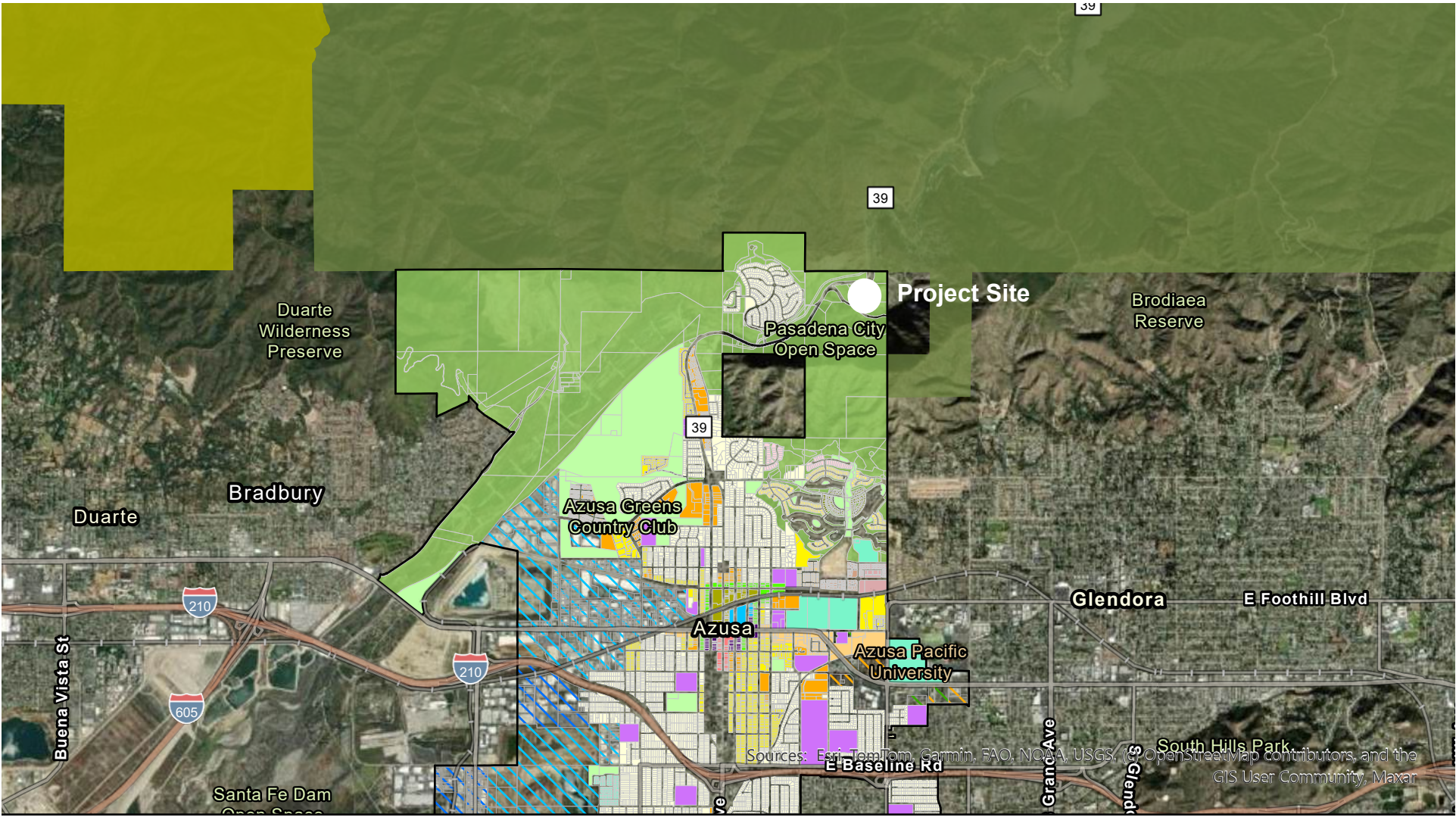
San Gabriel Mountains National Monument was established on October 10, 2014 by President Barak Obama under the Antiquities Act and expanded by President Biden in May 2, 2024.

Azusa Wilderness Park is a 70+ Acre park located within the San Gabriel Mountains National Monument, it is owned by the Watershed Conservation Authority and is in the process of being restored and developed into a sustainable multi - benefit watershed park, a gateway to the San Gabriel Mountains National Monument, through adding a visitor center, pavilion, natural play areas, outdoor classrooms, bikeways, transit to trails, etc.

SITE OVERVIEW

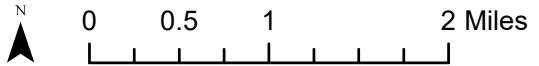


SITE ANALYSIS - CONTEXT



LEGEND

- | | | | |
|--|-------------------------------|-------------------------|---|
| — Azusa City Limits | Civic | Great Park Neighborhood | Route 66 |
| Zoning | DWL West End Industrial | Schools | Transit Neighborhood |
| 5,000 Blocks Residential | DWL West End Light Industrial | Low Density Residential | Transition District |
| 7,200 Blocks Residential | Downtown | Med Density Residential | Village Core Neighborhood |
| Azusa Pacific University Specific Plan | Downtown Expansion | Mod Density Residential | San Gabriel Mountains Monument |
| Azusa Pacific University Specific Plan | Garden Court Neighborhood | Open Space | San Gabriel Mountains Monument Boundary expansion |
| Azusa Pacific University Specific Plan | Gold Line | Residential Medium | |
| | | Residential Moderate | |
| | | Recreation | |



SITE ANALYSIS - EXISTING CONDITIONS

Natural Area



HWY 39 Bridge



Mesa - Flat Green Space



Azusa Springs



Taylor Homes



Empty Space - Phase 1



Parking Lot



WCA Office



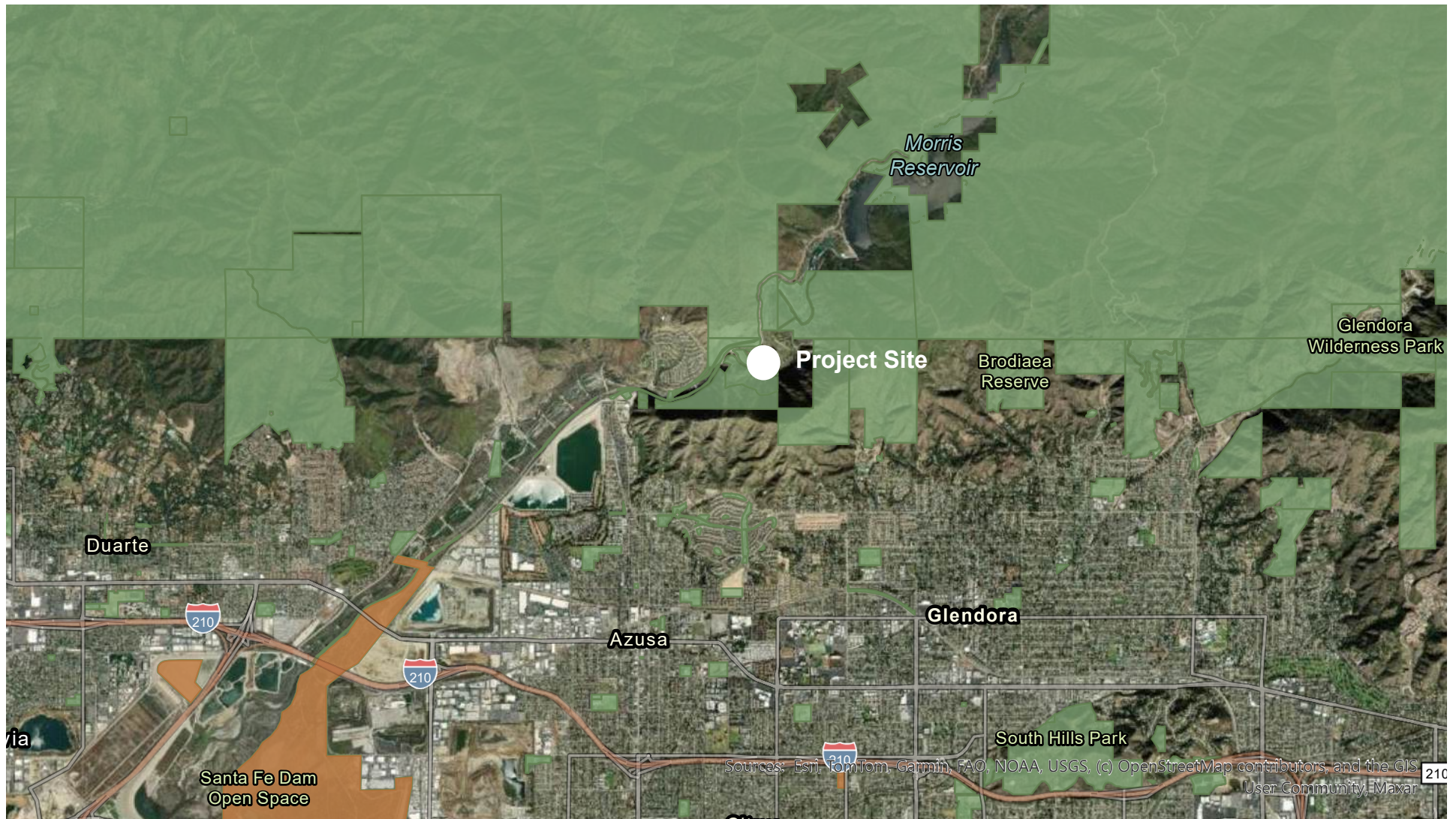
Terraced Mobile Home Pads



Landslide on Trail

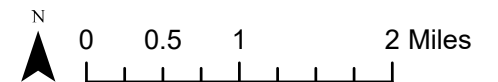


SITE ANALYSIS - OPEN SPACE AND PARKS



LEGEND

- Department of Parks and Recreation Facilities (Accessible Parks)
- Countywide Parks and Open Space



Los Angeles County has an extensive network of open spaces. Including natural preserves, recreational areas and parks. **Accessibility** is an major issue is California Parks - within our state park system, there are designated accessible restrooms, campsites, and visitor centers, and the number is increasing. There is a lack of accessibility in the San Gabriel Mountain National Monument and Azusa Wilderness Park will be designed with accessibility in mind, with accessible trails, lookouts and activities for all.

SITE ANALYSIS - LAND USE AND DRAINAGE



Esri, NASA, NGA, USGS, FEMA, Sources: Esri, TomTom, Garmin, FAO, NOAA, USGS, (c)

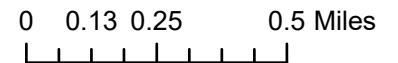
LEGEND

Streams and Rivers

- ▶ Stream/River:
Hydrographic Category
= Ephemeral
- ▬ Stream/River:
Hydrographic Category
= Intermittent

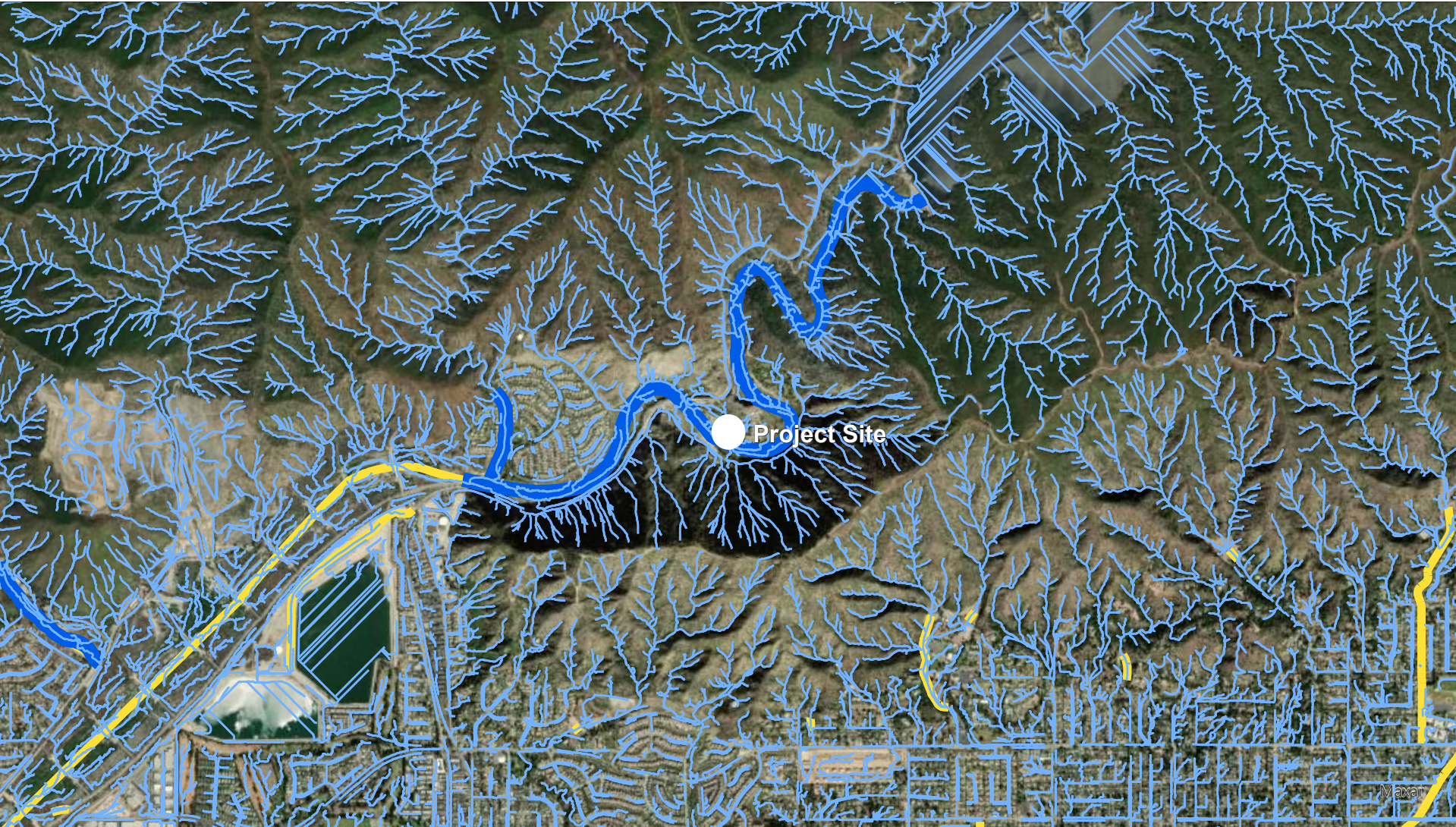
Land Cover Classification

- Tree Canopy
- Shrubs
- Ground Cover
- Bare Ground
- Impervious
- Water



San Gabriel Mountain National Monument has many ecosystems, supporting many plant communities and animal habitats. Wild fires have torn through the area multiple times burning down dense tree canopy, leaving barren land, which slowly regrows shrubs. Luckily, the hills behind our site have not burned in the last 75 years and was able to escape the recent fires because they tree canopy was north facing and retained more moisture than surrounding areas. It is important to consider what to plant and where to plant.

SITE ANALYSIS - DRAINAGE



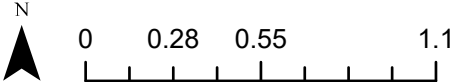
LEGEND

- █ Natural Drainage
- █ Open Channel
- Stream

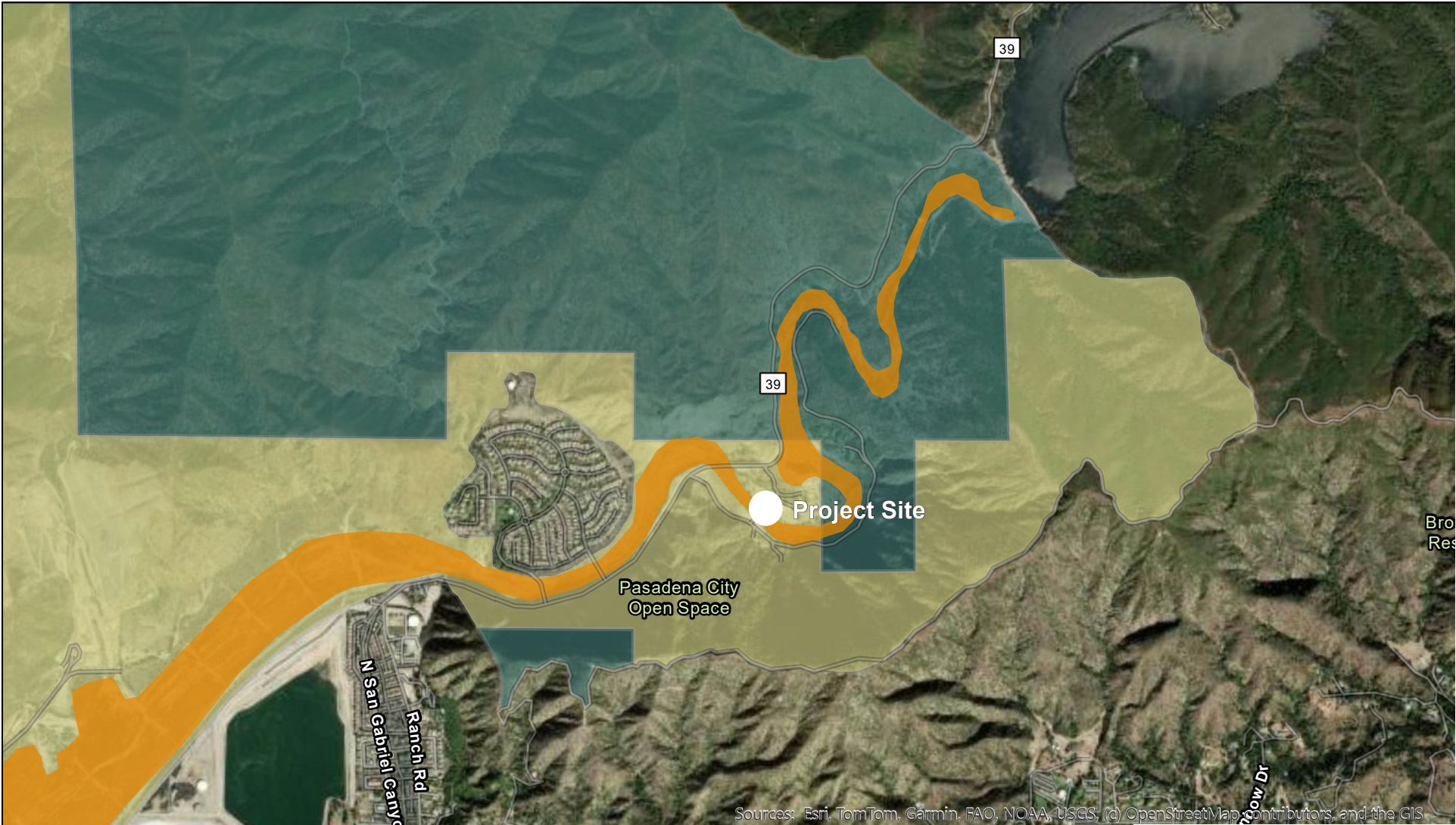
San Gabriel River is the natural drainage for the San Gabriel Mountains National Monument.

Constraints: The mountains in the canyon can be unstable with all the microstreams that move through the side. Leading to rockslides.

Opportunities: There are a lot of water access points due to the San Gabriel River and opportunities to daylight some of these microstreams.



SITE ANALYSIS - SIGNIFICANT ECOLOGICAL AREA

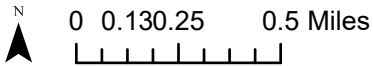


LEGEND

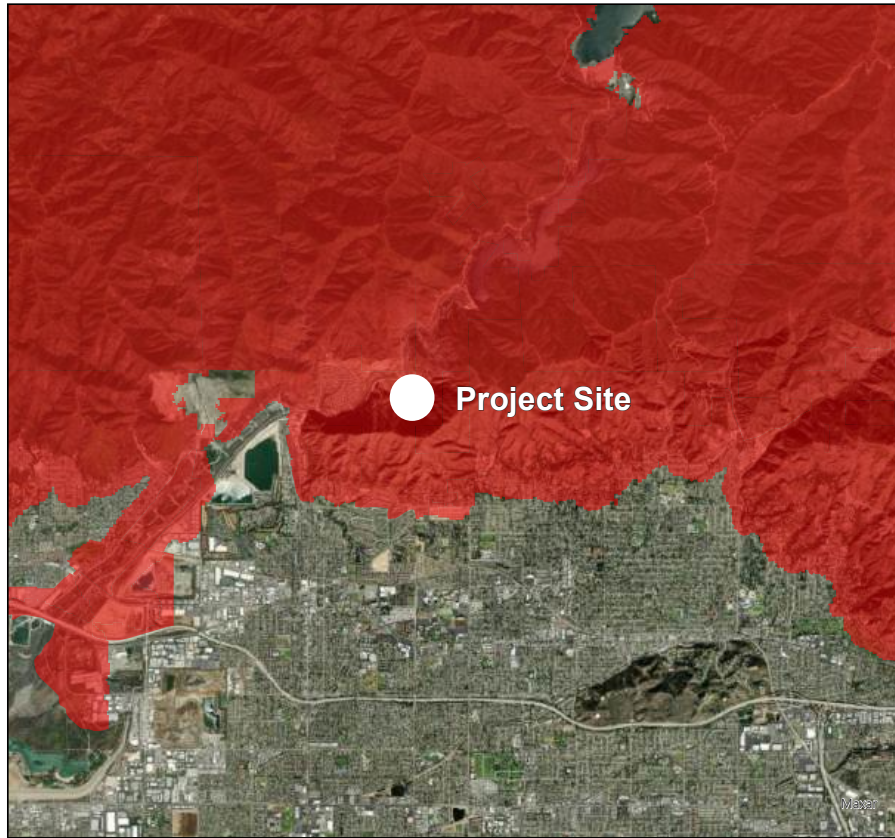
- Significant Ecological Area (SEA)
- Significant Ecological Area
 - Significant Ecological Area (Incorporated City)
 - Southern California Critical Habitat Zone

Significant Ecological Areas (SEA): are official designated areas within LA county with irreplaceable biological resources. The objective of SEA programs is to conserve genetic and physical diversity in biological areas.

Our site is located within the SEA and is also a critical habitat zone for the endangered southwestern willow fly catcher, whom lives in riparian cottonwood- willow forests. Which is one of the main ecosystems of our site, right along the San Gabriel River.



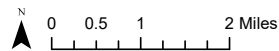
SITE ANALYSIS - FIRE HAZARD SEVERITY ZONE AND HISTORICAL FIRE MAP



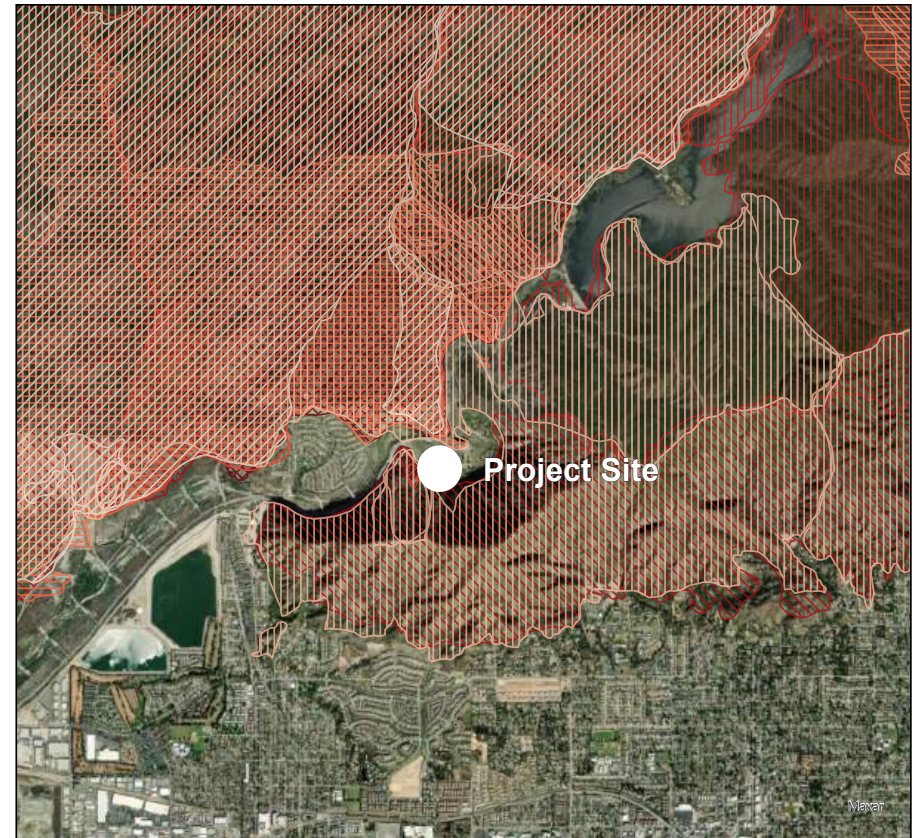
LEGEND

Fire Hazard Severity Zones

- Very High
- High
- Moderate



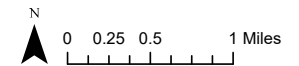
Fire Risk: The site is located in a high fire risk zone. Historically the site has not burned in almost 75 years, but it seems like it is only a matter of time. The areas surrounding the site have suffered countless of fires in the last 75 years, invasive vegetation has a tendency to take over the recently burned areas and tend to be a catalysis to reoccurring burns. Consideration of fire boundaries and restoration of native fauna and brush clearing can help prevent devastating fires.



LEGEND

California Historical Fire Perimeters (1950 - 2023)

Decade	
▨ 1950 - 1959	1950 - 1959
▨ 1960 - 1969	1960 - 1969
▨ 1970 - 1979	1970 - 1979
▨ 1980 - 1989	1980 - 1989
▨ 1990 - 1999	1990 - 1999
▨ 2000 - 2009	2000 - 2009
▨ 2010 - 2019	2010 - 2019
▨ 2020 - 2023	2020 - 2023

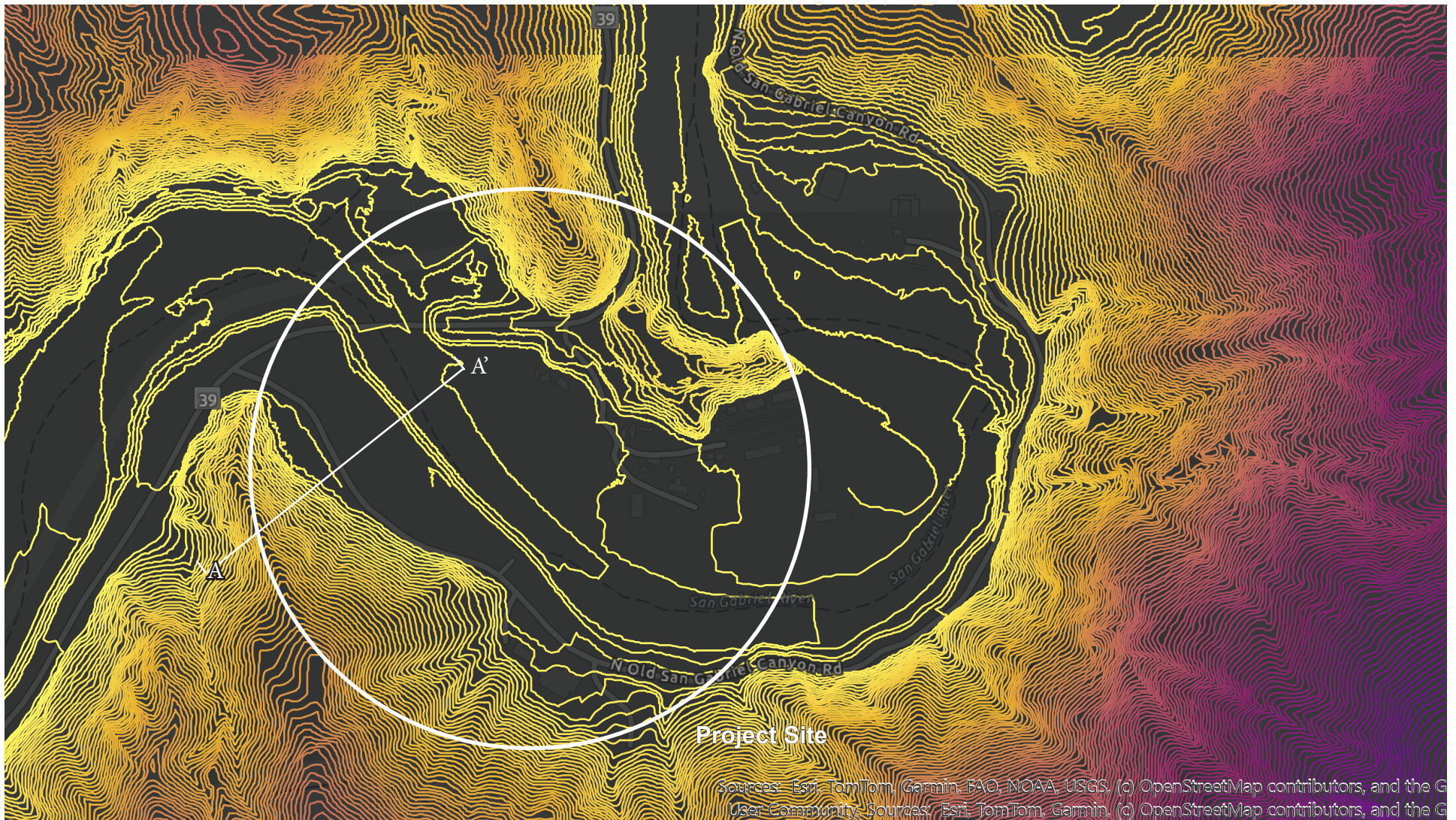


Change: Though the site has not burned in the last 75 years. It does not indicate that it will not burn in the future.. Climate change is real and the threat of fire is inevitable.

Constraint: Area has a history of fires

Opportunity: Design with defensible spaces in mind and fire resistant planting

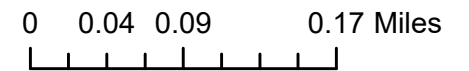
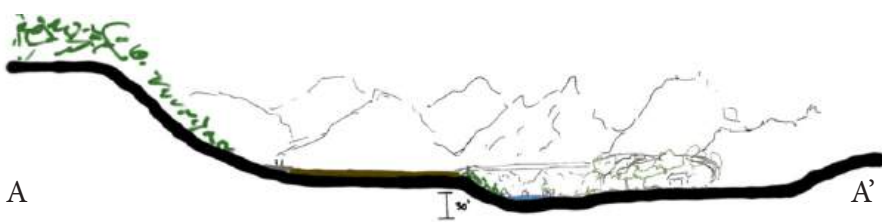
SITE ANALYSIS - TOPOGRAPHY



LEGEND

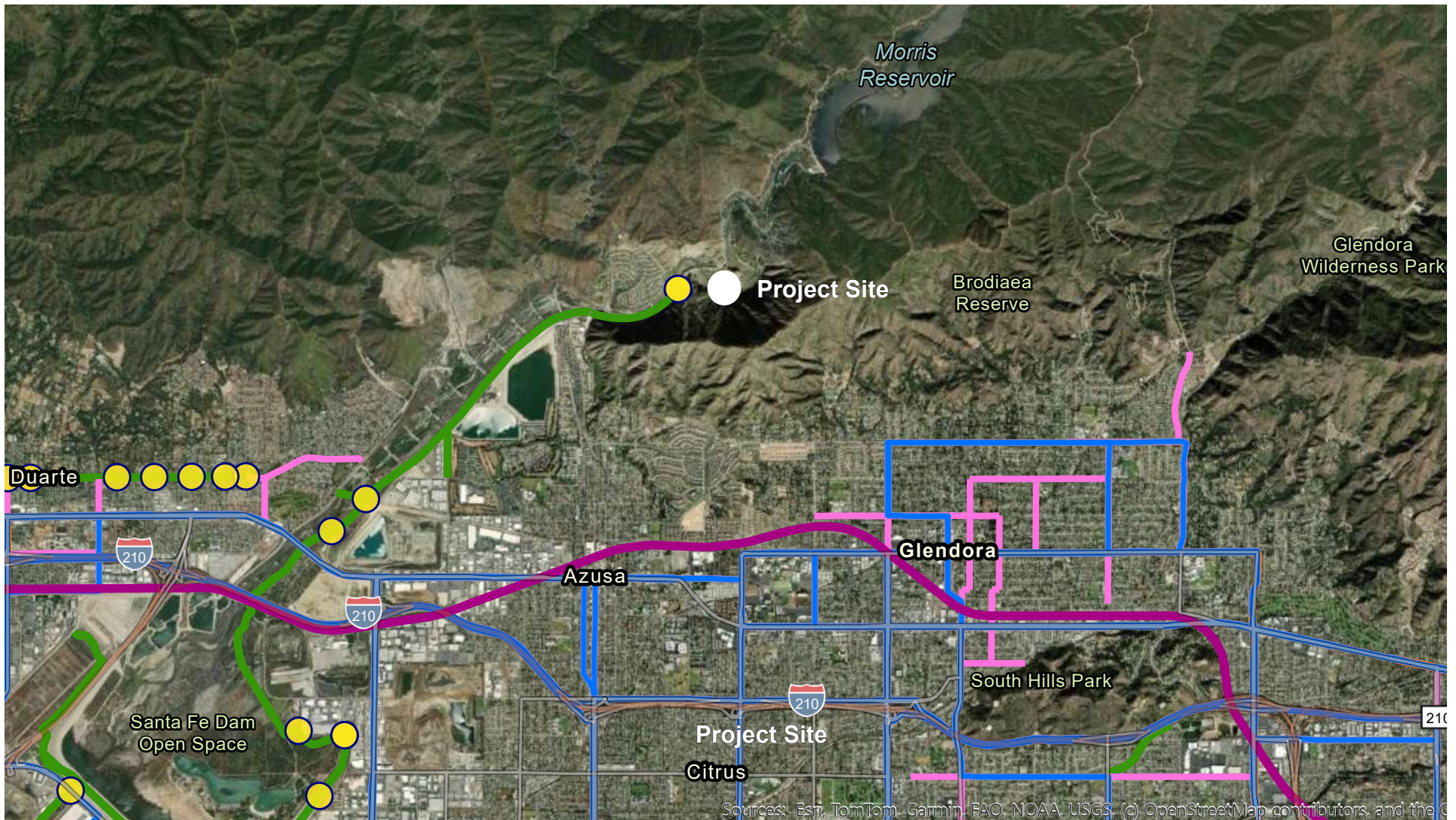
LARIAC Contours
10ft

Elevation



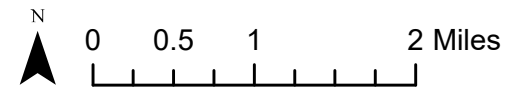
Topography: The surrounding spaces of the site are very steep and mountainous, which may become landslides during severe weather. River access from the phase 1 is steep and disconnected from the Mesa and Taylor home portions of the site.

SITE ANALYSIS - BIKE-WAYS & PUBLIC TRANSPORTATION



LEGEND

- LA County Bikeway Access Points
- Bike Path
- Bike Route
- MTA Metro Lines
- Foothill Transit Bus



Connections: There is currently one highway into the site and one bike path, that ends just before the entrance of the site. Public transportation and bike ways can be extended and bring the community up into the site, easing the vehicular traffic.

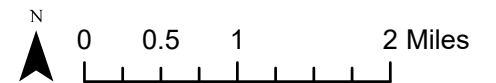
Opportunities: We can bring bike paths and public transportation directly into the site.

SITE ANALYSIS - SAN GABRIEL MONUMENT AMENITIES



LEGEND

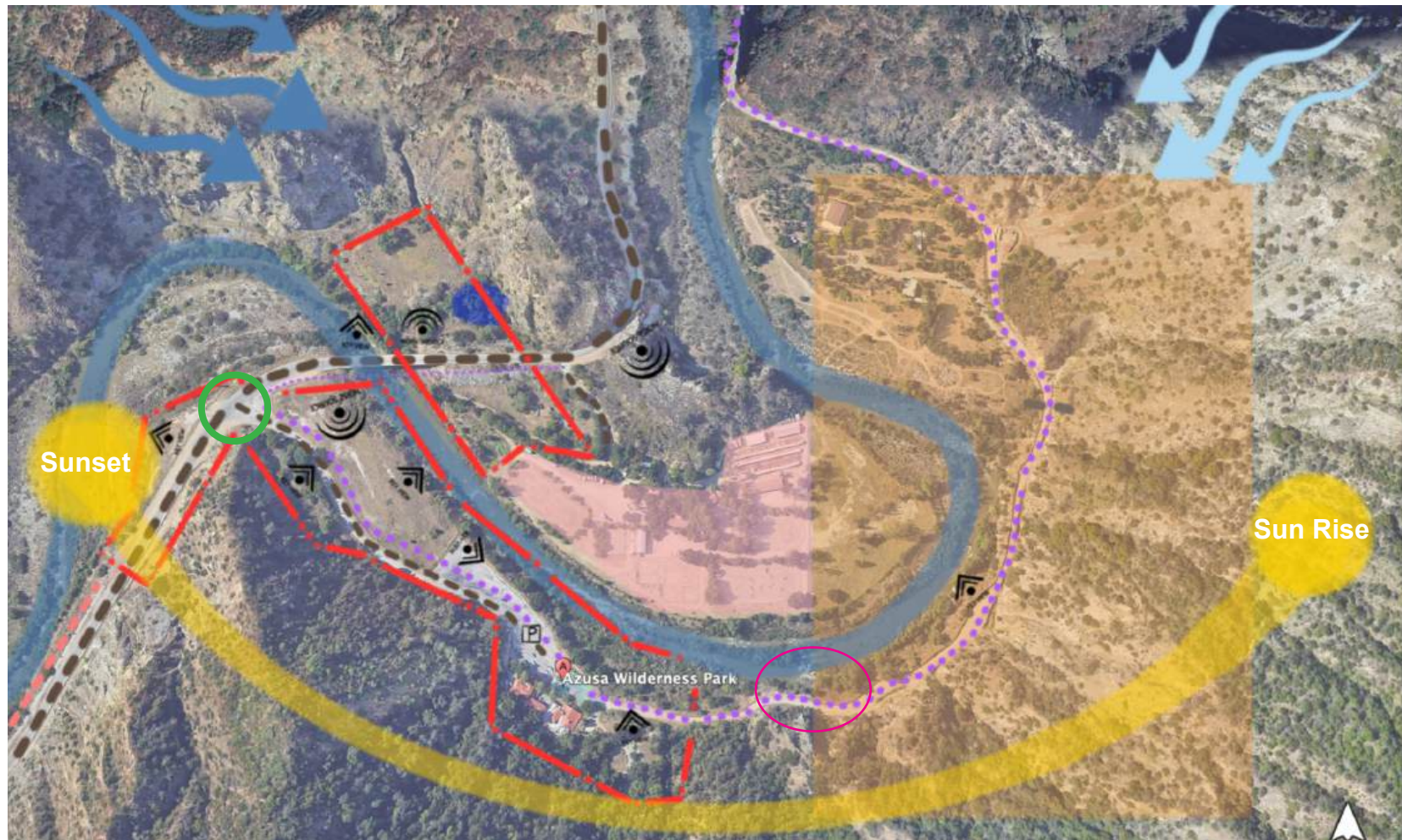
- | | | |
|--------------------|----------------------------------|---|
| Campgrounds | Bike Trails boundary expansion | San Gabriel Mountains Monument |
| River Runs | USFS Trails boundary expansion | San Gabriel Mountains Monument Boundary expansion |
| River Access Sites | Hiking Trails boundary expansion | |
| USFS Trails | | |
| Bike Trails | | |
| Hiking Trails | | |




















Amenities: Hiking trails and camping are the major experiences in the San Gabriel Mountains National Monument, our site can provide both opportunities and more.

Opportunities: There are trails coming really close to the park - trails can be extended directly into the park and camping can also become an amenity in the park.

SITE ANALYSIS - ENVIRONMENTAL



LEGEND

	Main Entrance		Bike Path		Key Views
	Scope of Work		Parking		Noise Source
	San Gabriel River		Azusa Spring		Prevailing Winds
	Primary Vehicular Circulation		Buddhist Meditation Center		Santa Ana Winds
	Secondary Vehicular Circulation		Rainbow Canyon Ranch		
	Primary Pedestrian Circulation		Landslide Zone		
	Secondary Pedestrian Circulation				

KEY NOTES:

- The site is split by the river and has limited pedestrian access to the north side of the park. The only access is walking directly on the highway with fast moving cars.
- The site has limited shade and gets really hot during the day.
- The topography south and east of the site is really steep and some areas are prone to landslides.
- There is no river access on the south side of the park due to steep topography.
- Fires have burned in different areas surrounding the site.

CONSTRAINTS AND OPPORTUNITIES



Constraints:

1. Park entrance is unsafe and hard to find
2. Steep grade on most areas of the site
3. Landslide zone is multiple areas
4. High fire risk on all sides
5. No safe river access
6. Different areas of the site are disconnected
7. Existing Equestrian Center and Buddhist Center
8. Fast moving traffic on HWY 39
9. Lack of pedestrian circulation
10. Invasive Species



Entrance to the right, easy to miss.



The south side of the park is cradled by steep slopes



The park is divided by the river and highway

CONSTRAINTS AND OPPORTUNITIES



Opportunities:

1. Cultural stewardship programming for local Native American Tribes
2. Environmental education opportunities: Ecosystems, Water Conservation, Indigenous History
3. Better connection to site and within the site
4. Accessible and safe recreational activities
5. Sustainable infrastructure
6. Habitat and Native Plant Restoration
7. Slope Stabilization
8. Safe river access
9. Day lighting creeks
10. Slowing down traffic on Hwy 39



Indigenous gathering spaces



Connections between divided areas



Rock slide prevention netting

SITE PHOTOS - OPPORTUNITIES AND CONSTRAINTS



Bike Path

Constraints: The current bike path ends before reaching Azusa Wilderness Park.

Opportunities: The bike path can be extended to Azusa Wilderness Park and beyond.



Main Entrance

Constraints: The main entrance hard to see and dangerous to enter and exit due to the fast traffic moving on Highway 39.

Opportunities: Wayfinding/ Signage to let visitors know they have arrived, traffic slowing methods like traffic circle.



Parking Lot

Constraints: Current parking lot is huge and takes up majority of the flat space available to the site.

Opportunities: Connecting site to public transportation can ease the need for large parking lots and open up the space to programming opportunities.



Site Plan



Current WCA Office

Constraints: The main building has suffered from earthquakes and is at fire risk.

Opportunities: This site can become an outdoor classroom and activities center.



Terraced Trailer Home Parking

Constraints: Super steep

Opportunities: This site can become an activity hub for play and exploration. Terraced gardens and natural play areas.

SITE PHOTOS - OPPORTUNITIES AND CONSTRAINTS



HWY 39 Bridge

Constraints: Bridge is narrow and does not provide safe pedestrian access. Loud. Fast Traffic

Opportunities: Views off bridge is amazing and pedestrian access opportunities



Concrete Pad

Constraints: Invasive planting has taken over, landslide possibility, fire risk

Opportunities: Enclosed camping area, revenue possibility



Taylor Home

Constraints: Area is separated by river and highway 39, abandoned buildings, separated by equestrian center

Opportunities: Connection opportunity to the main site and river access, ecological site, habitat restoration



Site Plan



Trail + Landslide

Constraints: Landslide risk on trail, no shade

Opportunities: Shade areas, look outs, landslide prevention and safety



Mesa

Constraints: No connection to site, invasive plants

Opportunities: This site is flat, indigenous programming

PRECEDENT CASE STUDY 1: KUNSHAN MIAOJING RIVER, CHINA



Kunshan Miaoqing River Central Water Corridor

- | | |
|------------------------|-----------------------|
| 01 wetland boardwalk | 06 family lawn |
| 02 forest amphitheater | 07 play areas |
| 03 large willow deck | 08 wet prairie walk |
| 04 team building lawn | 09 community pavilion |
| 05 twin bridge | 10 activity lawn |
| 06 viewing platform | 11 visitor center |
| 07 wetland education | 12 wetland garden |
| 08 ecology cafe | 13 canal-front stroll |

- Legend**
- E entry
 - P parking
 - H restroom
 - F food / beverage
 - B bike rental



ACCESSIBILITY STRATEGY Accessibility is achieved by comprehensive pedestrian infrastructure, strengthened by connections to urban roadways, robust bridges, and a series of elevated boardwalks that provide access to all habitats while still mitigating human impact to the Miaoqing River's sensitive ecology.

Project Name: Miaoqing River: From a Hidden Treasure to Ecological Infrastructure

Completion year: Phase 1 built in 2022

Project area: 600, 000 m2 (148.26 Acres)

Project location: Kunshan, China

Design company: PLAT STUDIO

Collaborators: Great Ecology

Lead Architects: Fred Liao, Shih-Lin Lan

Environmental:

- Two water channels and dense tree planting protect the river from runoffs, creating a unique green area, but was once inaccessible to the public. The installation of a new piping system and government approval allowed the space to become a public green space.
- Diverse ecological zones were created, multi-layered vegetation was introduced along trails, wet prairies and re-graded waterways were established for wetland planting.
- Bioswales were implemented along trails to further capture runoff.
- All surfaces are designed to be permeable and elevated where possible, making the site a sponge city.

Social:

- Enhanced neighborhood connections and provide pedestrian links from adjacent commercial and residential neighborhoods through the many bridges and trails.
- Continuous trail system connects Kulei Lake Area to the Forest Park, which are green spaces on opposite ends of the Kunshan Miaoqing River Corridor.
- Community events, daily strolling, jogging, biking, picnicking, education research show successful integration.

Economic:

- Created a space for concerts, large social gatherings, ecological education events bringing in revenue to the city.

What We Can Implement:

A comprehensive pedestrian/cycle infrastructure of robust bridges, elevated boardwalks using permeable and sustainable materials such as metal grates, permeable paver, permeable concrete, that provide access to all habitats, but mitigating human impact on sensitive ecology. Educational way finding signage to engage users in the site. Promote biodiversity and sustainable materials.



PRECEDENT CASE STUDY 2: SOMES RIVER, CLUJ-NAPOCA, ROMANIA



Project Name: Somes River
 Completion year: 2023
 Project area: 82.07 Acres 15 KM
 Project location: Cluj-Napoca, Romania
 Design company: PRÁCTICA
 Collaborators: ACI Cluj, Socot, Simacek, Nord Conforest
 Lead Architects: Jaime Daroca, José Mayoral, José Ramón Sierra
 Environmental:

- During the second half of the 20th century, the banks of the river were modified with concrete walls, creating a barrier between the city and the river. The concrete barrier were removed and the natural character of the river bank was recovered, a system of natural terraces was designed to re-naturalize the environment, widening the river, and creating a more permeable shore.
- The banks were replanted with diverse local vegetation, rocks, and biorolls. Biodiversity and micro-climate formations, CO2 capture, removal of invasive species were prioritized.
- Connections to the river and across the river were formed through bridges and terrace pathways.

Social:

- New sets of public spaces were activated by removal of the barriers, parking lots were converted into squares over looking the river, banks and beaches.
- Bleachers, seating areas of different scales served different programming and created spaces for diverse community encounters and exchanges.
- Parks in the area that functioned in isolation were now connected through a series of bike and pedestrian paths.

Economic:

- The river became the new social space for gathering, connections between varies communities, boosting activity and revenue for local businesses.

What We Can Implement:

Creating natural terraced areas and path ways to access the river banks, create spaces for native planting and habitat building, utilize banks of river as gathering space, creating outlooks.



Terraced river bank seating areas

Terraced river bank seating and native planting areas



Terraced riverbank for native planting and pathways for river access



River look out



Seating areas along river bank, river crossing

PRECEDENT CASE STUDY 3: ZION NATIONAL PARK, UTAH, USA



Project Name: Zion National Park
 Completion year: 1919
 Project area: 229 Square Miles, 146,597 acres
 Project location: Utah, USA
 Design company: ACME Scenic, Anderson Design, Overland Partners, Bondir, GOMA National Park Service
 Annual visitors: 4.62 million (2023)

Environmental:

- The park's ecosystem supports over 800 native plant species, 78 species of mammals, 291 species of birds, 37 species of reptiles and amphibians, and 8 species of fish.
- Clearly marked pathways to prevent users from entering sensitive ecological areas.
- Permits required for high seasonal traffic trails to preserve natural environment
- 98% of the park use is concentrated in the main canyon to preserve sensitive ecology
- Rock slides are frequent and scientists are brought in to analyze if the site is safe for continued use. Paths are adjusted as the land and topography shifts and changes.

Social:

- Visitor Center
- Educational signage throughout the park
- 2 miles of paved pedestrian, bicycle and ADA pathways are available.
- Shuttle service to reduce vehicular traffic
- Two campgrounds

Economic:

- Entry fee \$35 per vehicle
- Permitted Hikes
- Campground Permits

What We Can Implement:

Multi-use ADA pathways for pedestrians and bicycles. Limiting vehicular traffic in sensitive areas and provide alternative methods of transit through shuttles, bike paths. Offer an array of options to experience the park, through picnic areas, hiking paths, camping, educational and cultural sites, and trails. Capitalizing on the dramatic scenery of the site by offering outlooks on vistas and interesting topography. How can we manage rock slides on our site? Do we have alternative paths? Connect SG Canyon Gateway Center Via Shuttle.

PRECEDENT CASE STUDY 4: GUITOU TOWN WETLAND PARK, CHINA



01. 入口广场
02. 驿站 (卫生间)
03. 停车场
04. 绿道
05. 观景台
06. 下沉广场
07. 游廊
08. 游乐场
09. 湿地花田
10. 汀步
11. 栈桥
12. 长廊
13. 观景台
14. 凉亭
15. 观景亭
16. 科普广场
17. 水梯
18. 亲水平台
19. 石滩
20. 废弃铁轨装置



Project Name: Guitou town wetland park
 Completion year: 2023
 Project area: 8.4 Acres
 Project location: Guitou, China
 Design company: YXDesigners
 Lead Architects: JLU Jiahong, XUE Yiwen, MO Linghuizi, PENG Tan, TUO Kui, ZHU Mingxing
 Environmental:

- This natural wetland along the Wujiang River in Guitou Town is frequently submerged during flood seasons, it made the site unsuitable for agricultural development, thus remaining “untamed and wild”, because of this, the ecological and dense native vegetation, rich biodiversity remained preserved and pristine.
- The park was designed to function during wet and dry seasons, other areas of the river have built tall embankments along the river, separating people and the river, however, this park was designed to accommodate the changing water levels, providing programming, through a series of slopes, terraces, catchment basins, and elevated pathways and lookouts, thus coexisting with the floods. The park acts as a living hydrometer.

Social:

- A visitor center is strategically oriented on expansive vistas.
- Elevated boardwalks allow for ADA accessibility directly to the water.
- Sheltered promenades located across the site offer gathering spaces and outdoor classrooms.
- Multi level pathways allow for users to connect to the site in different angles
- Up-cycled material play areas built into the natural environment offer immersive experiences.
- Seasonal camping and kayaking

Economic:

- Seasonal camping, kayaking, fishing experiences.

What We Can Implement:

Limit major development to keep preserve natural spaces, design areas of use for changing water levels, create natural play areas and outdoor classrooms. Seasonal activities like camping and kayaking.



68m 常水位示意图
Low Water Levels



70m 水位涨泛区域示意图
Higher Water Levels



Multi leveled pathways and viewing areas



Up-cycled play area built into landscape



River access, recreational activities, outdoor classroom

PRECEDENT CASE STUDY 5: YUMA EAST WETLANDS, PHASES 1 AND 2



Project Name: Yuma East Wetlands, P. 1&2
 Completion year: 2010
 Project area: 350 Acres
 Project location: Yuma, Arizona 85364
 Former Use: Greyfield
 Collaborators: Quechan Indian Nation

Environmental:

- 400 acres of trash dump filled with homeless camps into a mosaic of marsh, mesquite, cottonwood, and willows.
- Created habitat for 330 species of wildlife.
- 1,600 acre feet of water from municipal water treatment plant is reused each year, reduced projects water demand by 49% - 71% per year compared to other revegetation efforts in this extremely arid region through the use of innovative site specific irrigation techniques and restores ecosystem.
- Reuse of 350 cubic yards of excavated materials such as rocks and dirt to create overlooks of the town river and wetlands.
- Removal of rapid growth invasive species that cause wild fires.

Social:

- Hiking trails and bike paths and river access through wetlands and riparian woodlands.
- Community members and volunteers participated in establishing and maintaining the wetlands through planting workshops and educational opportunities.
- Quechan Indian Nation provided guidance in creating a cultural plaza with a gathering space shaped as a medicine wheel, a symbolic representation of the 4 directions, cycles of life, a Ramada, and planting beds for medicinal herbs. Site is used for ceremonial and celebratory purposes as well as education.

Economic:

- Employed 150 people in full and part time jobs since 2000

What We Can Implement:

Utilize native planting to increase biodiversity and restore the land. Removal of invasive fire starting species of plants. Reuse excavated materials to create other site features. Create cultural and historic sensitive sites with the collaboration with indigenous tribal members.



Lookout created with excavated materials



Paved pathways for ADA and bicycle usage



Indigenous cultural center a medicine wheel gathering area, ramada and medicinal garden

GOALS AND OBJECTIVES



EDUCATE

- Use **site amenities and outdoor classrooms to support engaging, place-based learning.**
- Highlight the **importance and legacy of Indigenous history and stewardship.**
- Promote **awareness of water conservation and the watershed's role in regional sustainability.**
- **Showcase the biodiversity of local ecosystems** and their interconnections.



ENCHANT AND CONNECT

- Create a **welcoming and magical gateway** to the San Gabriel Mountains National Monument.
- Offer a place to **experience the monument in miniature**—where visitors can hike, explore, camp, learn, and engage with nature in one location.
- Design **safe and accessible connections** linking local communities to the site and its recreational and educational offerings.
- **Foster a sense of wonder and belonging** through immersive outdoor experiences.



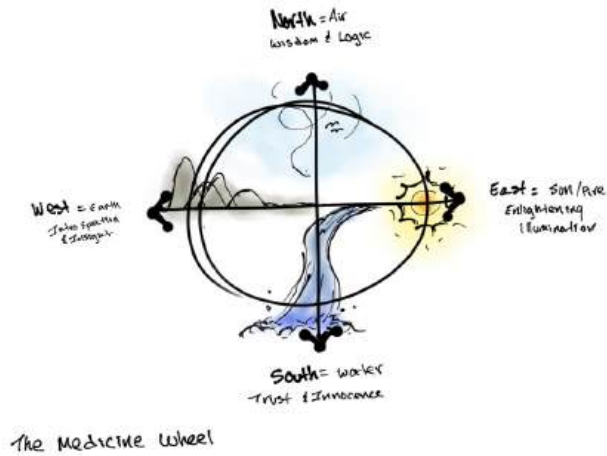
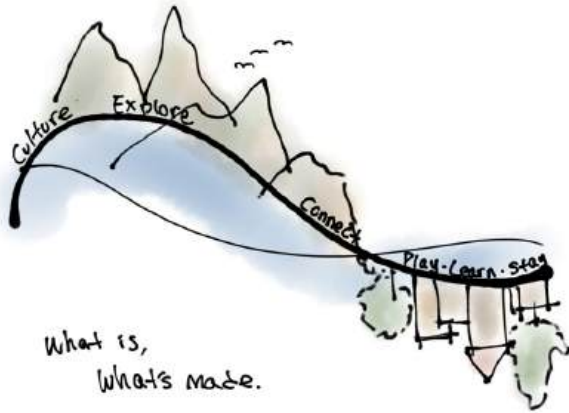
RESTORE AND PRESERVE CULTURE

- Reopen and **restore access to abandoned or underutilized areas of the site.**
- Protect and preserve **native ecosystems and wildlife habitats.**
- Reestablish meaningful **connections to natural water sources and hydrological features.**
- Honor and restore the cultural landscape by **preserving connections to Indigenous history and heritage.**

MOOD BOARD



CONCEPT PROCESS - BIG IDEAS



What is, What's made.

Azusa Wilderness Park is a gateway into the wilderness, it is the separation between the human built land and what is natural. It is the last stop of civilization before pure nature.

Nature is what provides resources and life and is what people come out to explore.

The **River** is what connects and sustains life in both what exist in nature and man.

The built **Infrastructure** strives to engage, enchant, and connect people to the natural beauty of the land.

The Medicine Wheel

The Medicine Wheel is a sacred symbol in many Indigenous cultures, often representing the cycle of life, the four directions, 4 elements, and the connection between all things. The circle represents the gateway, wholeness, inclusivity. The four pieces of the circle represent balance and connection between all.

The 4 directions show what is spiritually important:

North: Air - Wisdom and Logic - Cultural Wisdom, Rewild

East: Sun/Fire - Enlightening/ Illumination - Education

South: Water - Trust & Innocence - Information and Play

West: Earth - Introspection and Insight - Meditative & Cultural Site

Spreading Vines

Azusa Wilderness Park is a gateway into the San Gabriel Mountains National Monument, it is where the seed of interest of nature will be planted in many visitors. The starting ground of exploration.

The concept shows how a **seed** can **grow** into a **spreading vine**, representing the **curiosity** and **interest** of those whom visit the site and further explore into the Monument.

The stem represents the roads and connections that take you to visit the programs in the leaves and the vine is sustained and kept alive by the river.

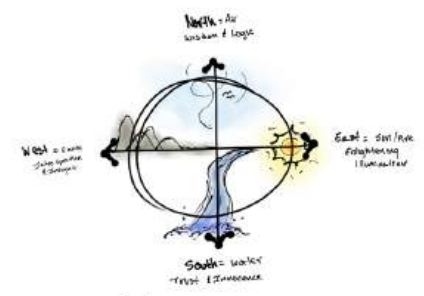
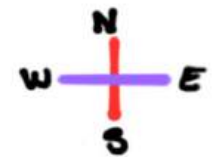
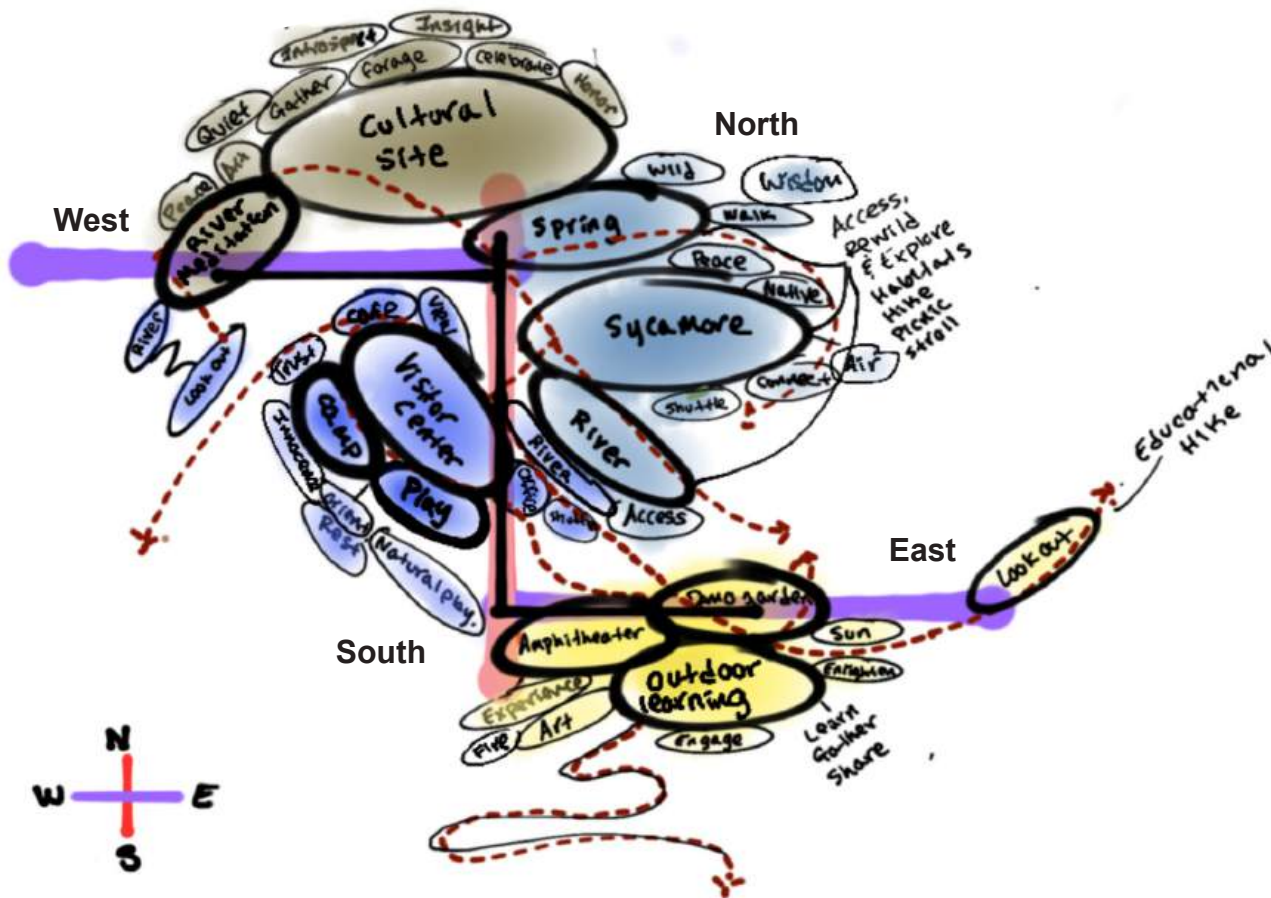
BUBBLE CONCEPT 2 - MEDICINE WHEEL

The **Medicine Wheel** represents the circle of life, the connection between all things in indigenous culture.

The space is divided into 4 zones that all fed in to one another, the experiences take you on a journey from one point to the next.

The themes of the elements, importance of directions and meanings will be echoed through each zone.

- North:** Air - Wisdom and Logic - Cultural Wisdom, Rewild
- East:** Sun/Fire - Enlightening/ Illumination - Education
- South:** Water - Trust & Innocence - Information and Play
- West:** Earth - Introspection and Insight - Meditative & Cultural Site



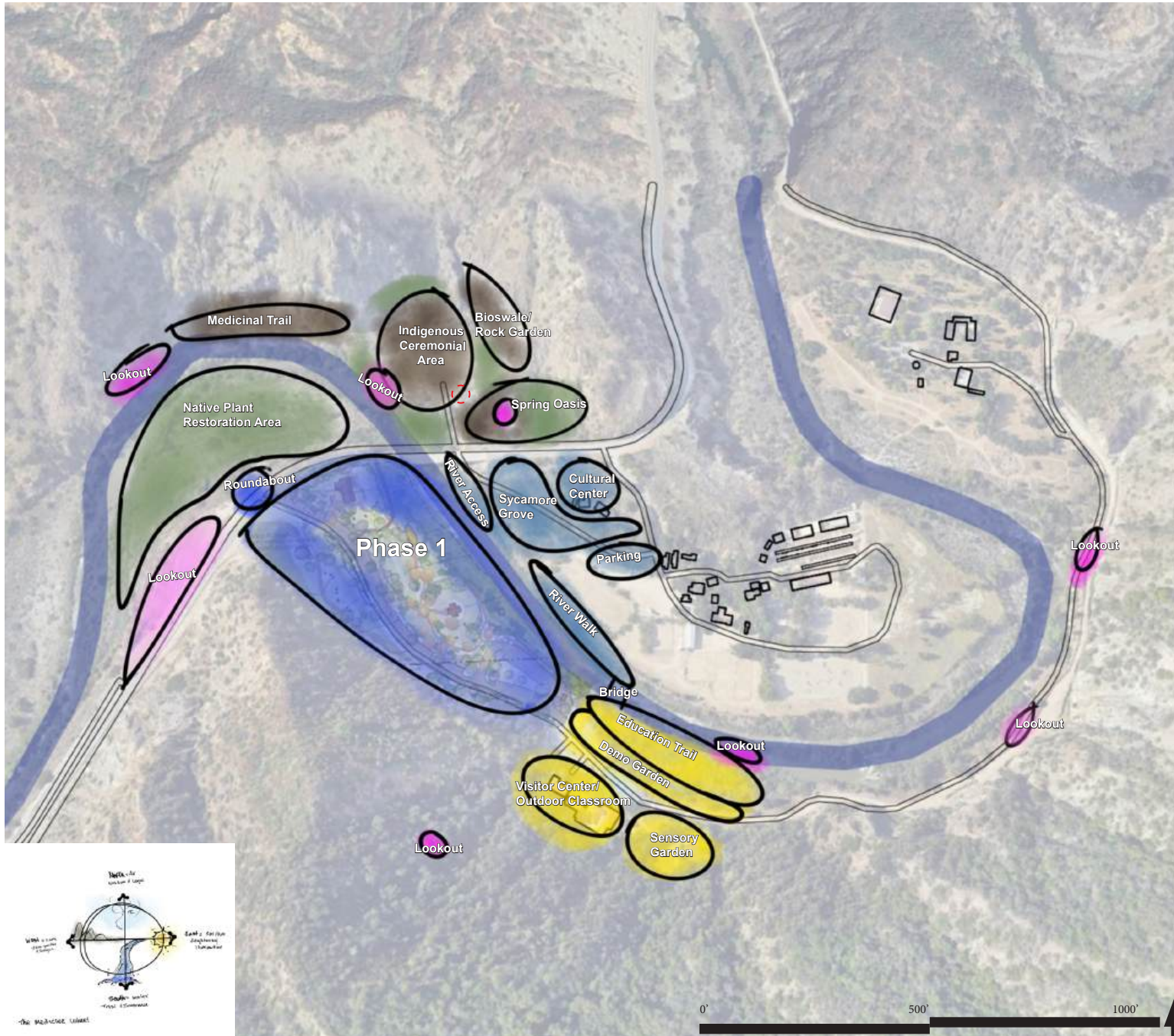
The medicine wheel



Connection Between All Things

- Medicine Wheel**
- "Connection between all things"
 - "Gateway"
 - "Wholeness"
 - "Inclusivity"
- North:** Rewild Land - Explore - Natural Connect to Nature
 - East:** Enlighten, learn, Art
 - South:** Information, Play, connect
 - West:** Meditative, culture, Art contemplate, Gather

FINAL CONCEPT DIAGRAM



The concept of the Medicine Wheel represents connection between all things, and is present in all areas of the park. The design is based on flow and progression from one space to another, one topic to another. Each space lends meaning and support to one another.

The circulation is like a growing vine, each program element is a seed that sparks enchantment.

North: Air - Wisdom and Logic - Cultural Wisdom, Rewild Land
Program Elements: Cultural Center, Amphitheater, Re-wilded Sycamore Grove and River Access

East: Sun/Fire - Enlightening/Illumination - Education
Program Elements: Visitor Center, Outdoor Classroom, Sensory Garden, Educational Trails, Demonstration Gardens

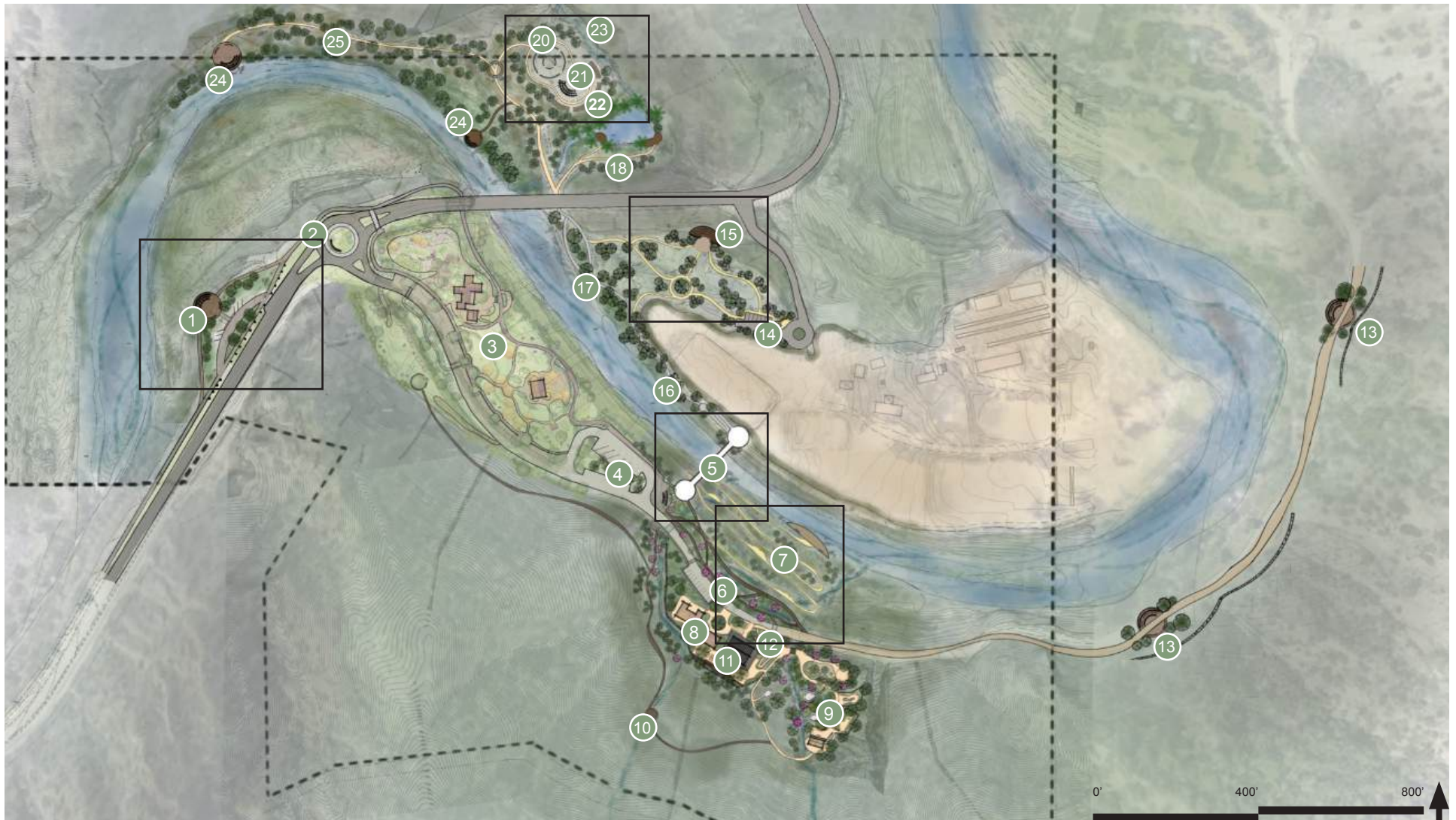
South: Water - Trust & Innocence - Information and Play
Program Elements: WCA Office, Cafe, Viewing Areas, Information, Play Area, Camp Sites

West: Earth - Introspection and Insight - Meditative & Cultural Site
Program Elements: Ceremonial Circles, Meditation Areas, Traditional Medicine Garden, Trails, Bioswales - Water Garden



LEGEND

- | | | | |
|-------------------------------|------------------------------------|--|------------------------------|
| 1 Seed of Interest Lookout | 7 Water Cycle Trail | 13 Trail Shaded Lookout / Rock Wall | 20 Ceremony Circle |
| 2 Roundabout W/ Entrance Sign | 8 Visitor Center/Outdoor Classroom | 14 Parking/ Shuttle Stop | 21 Shade Ramada |
| 3 Phase 1 | 9 Terraced Sensory Garden | 15 Cultural Center / Amphitheater | 22 Medicinal Garden |
| 4 Parking/ Shuttle Drop Off | 10 Chaparral Hike/ Lookout | 16 River Walk Trail | 23 Bioswale Rock Garden |
| 5 Bridge | 11 Shaded Outdoor Gathering Space | 17 Elevated Flood Trail + River Access | 24 River Lookout and Seating |
| 6 Rain and Rock Garden | 12 Restroom | 18 Spring Meditation Areas | 25 Foraging Trail |



LEGEND

- | | | | |
|-------------------------------|------------------------------------|--|------------------------------|
| 1 Seed of Interest Lookout | 7 Water Cycle Trail | 13 Trail Shaded Lookout / Rock Wall | 20 Ceremony Circle |
| 2 Roundabout W/ Entrance Sign | 8 Visitor Center/Outdoor Classroom | 14 Parking/ Shuttle Stop | 21 Shade Ramada |
| 3 Phase 1 | 9 Terraced Sensory Garden | 15 Cultural Center / Amphitheater | 22 Medicinal Garden |
| 4 Parking/ Shuttle Drop Off | 10 Chaparral Hike/ Lookout | 16 River Walk Trail | 23 Bioswale Rock Garden |
| 5 Bridge | 11 Shaded Outdoor Gathering Space | 17 Elevated Flood Trail + River Access | 24 River Lookout and Seating |
| 6 Rain and Rock Garden | 12 Restroom | 18 Spring Meditation Areas | 25 Foraging Trail |

ENLARGEMENT 1 - SEED OF INTEREST LOOKOUT



LEGEND

- A Roundabout + Entrance Signage
- B Shaded Lookout W/ Interpretive Signage
- C Parking
- D Bike/ Pedestrian Path
- E Native Plant Restoration

KEY MAP

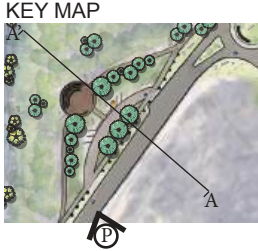
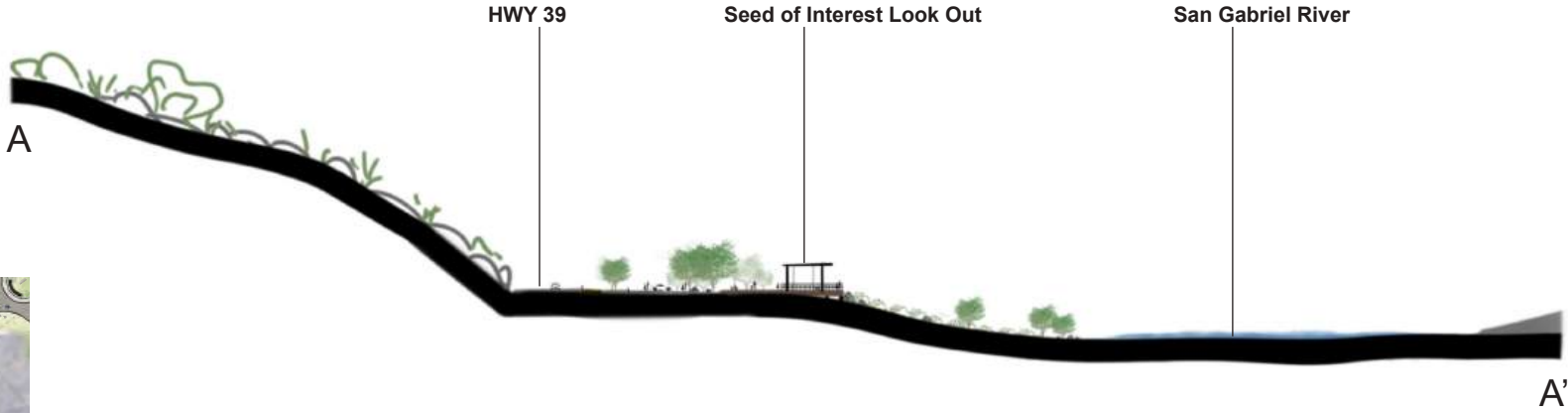


ENLARGEMENT 1

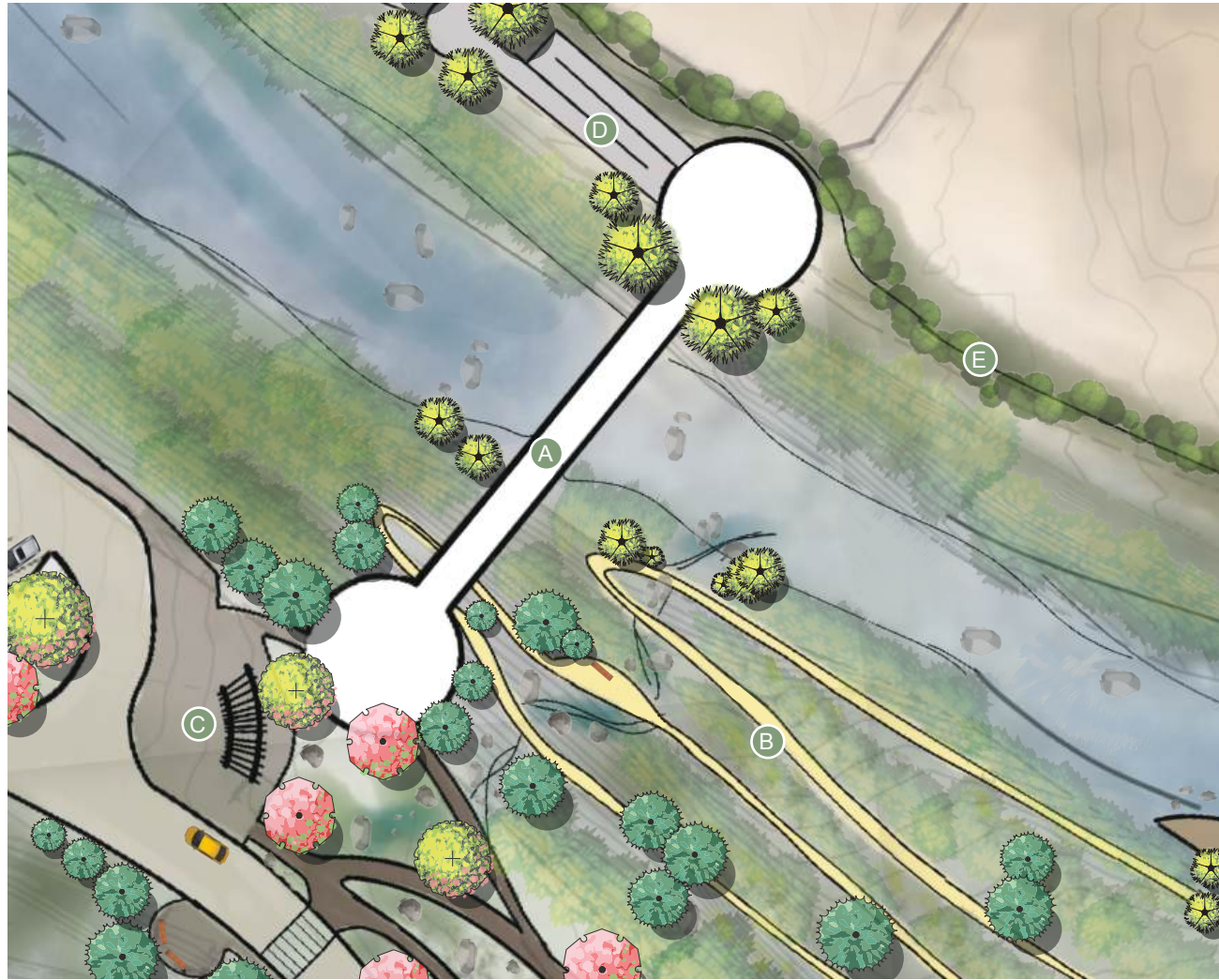
PERSPECTIVE



SECTION



ENLARGEMENT 2 - BRIDGE OF CONNECTION



LEGEND

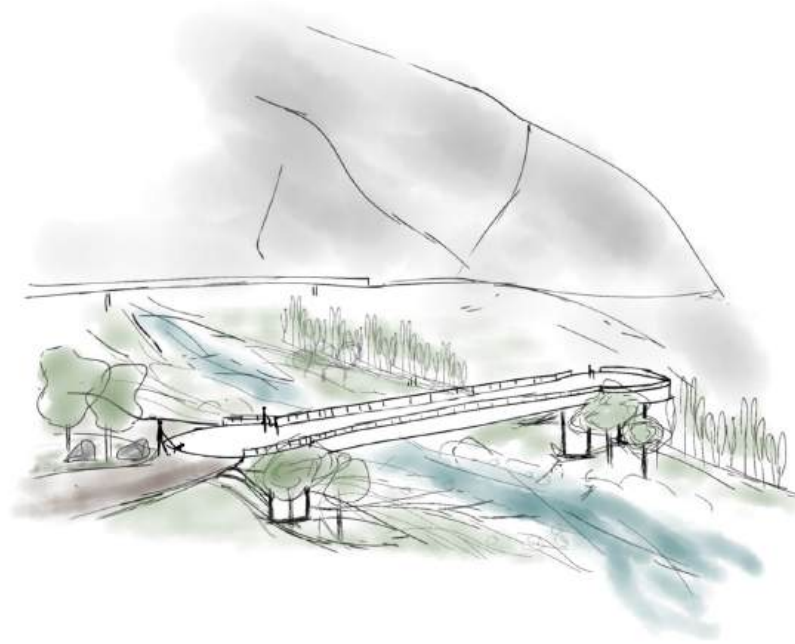
- A Bridge
- B Educational Trail
- C Bus Shuttle
- D Ramp
- E Plant Buffer

KEY MAP

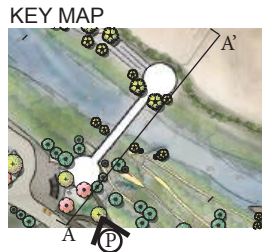
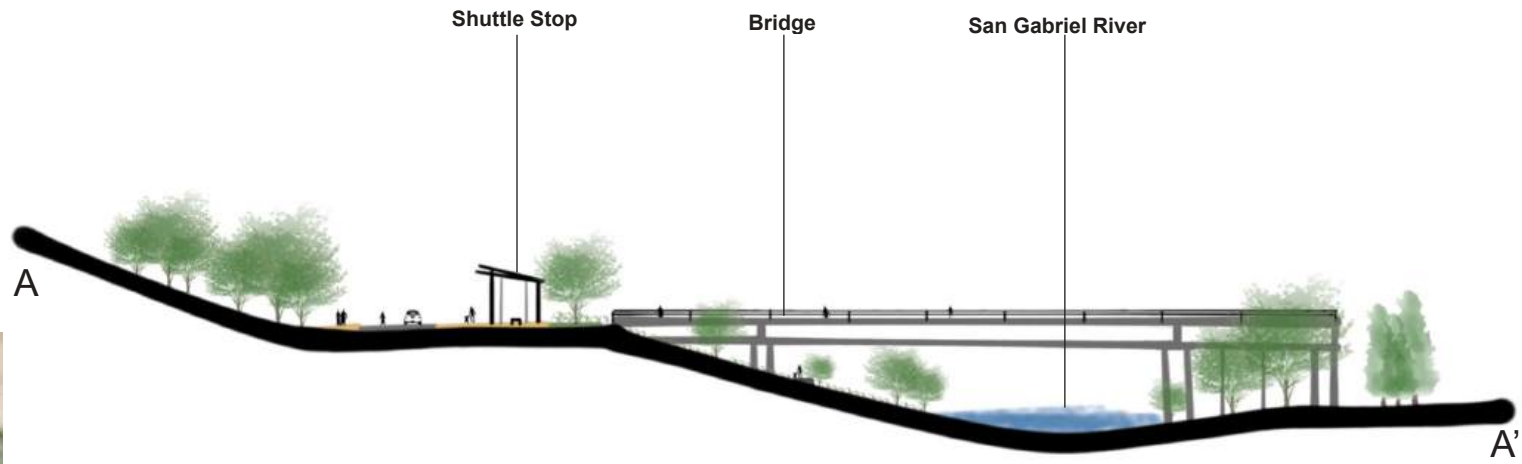


ENLARGEMENT 2 - BRIDGE OF CONNECTION

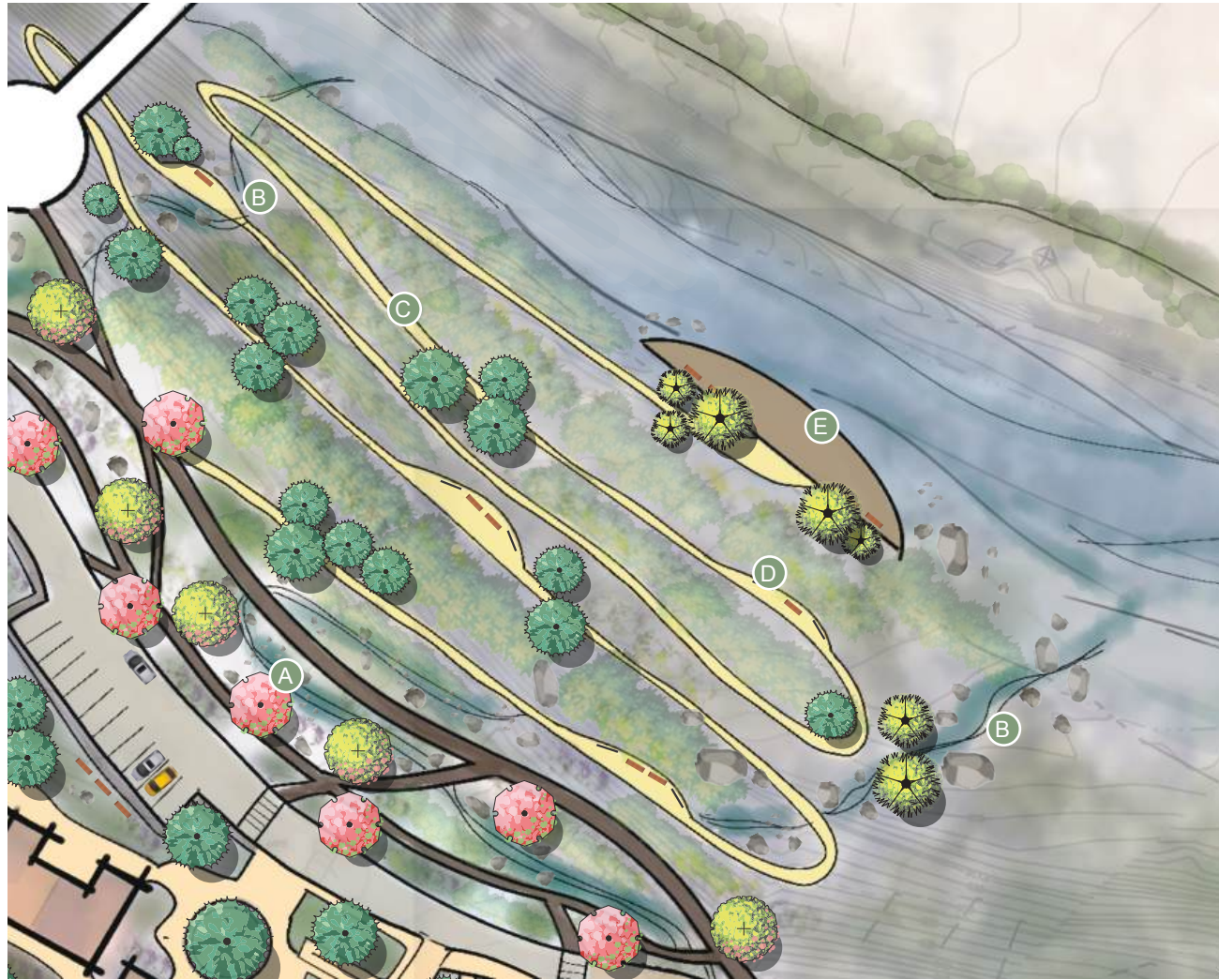
PERSPECTIVE



SECTION



ENLARGEMENT 3 - WATER CYCLE EDUCATION TRAIL



LEGEND

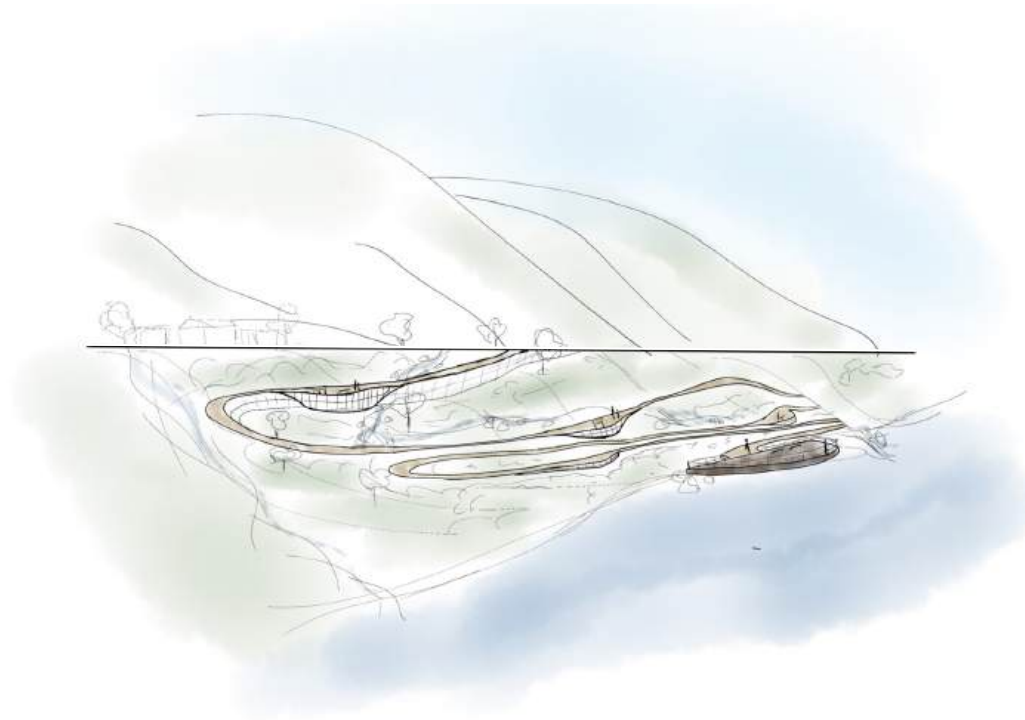
- A** Demonstration Garden Rain/ Bioswale
- B** Daylit Creek
- C** Educational Trail
- D** Interpretive signage and Seating
- E** River Viewing Platform

KEY MAP

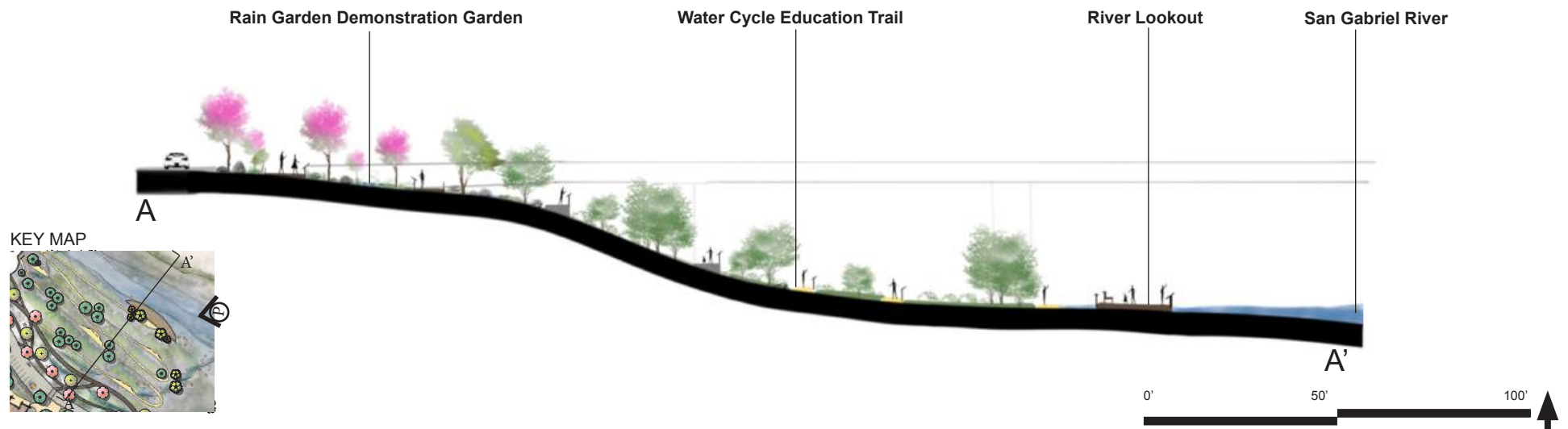


ENLARGEMENT 3 - WATER CYCLE EDUCATION TRAIL

PERSPECTIVE



SECTION



ENLARGEMENT 4 - SYCAMORE GROVE CULTURAL CENTER



LEGEND

- A** Cultural Center/ Museum
- B** Outdoor Classroom
- C** Picnic Area
- D** Parking
- E** Mother Sycamore Seating Area
- F** Sycamore Grove Trail
- G** Native Meadow
- H** Native Pollinator Garden

KEY MAP



ENLARGEMENT 4 - SYCAMORE GROVE CULTURAL CENTER

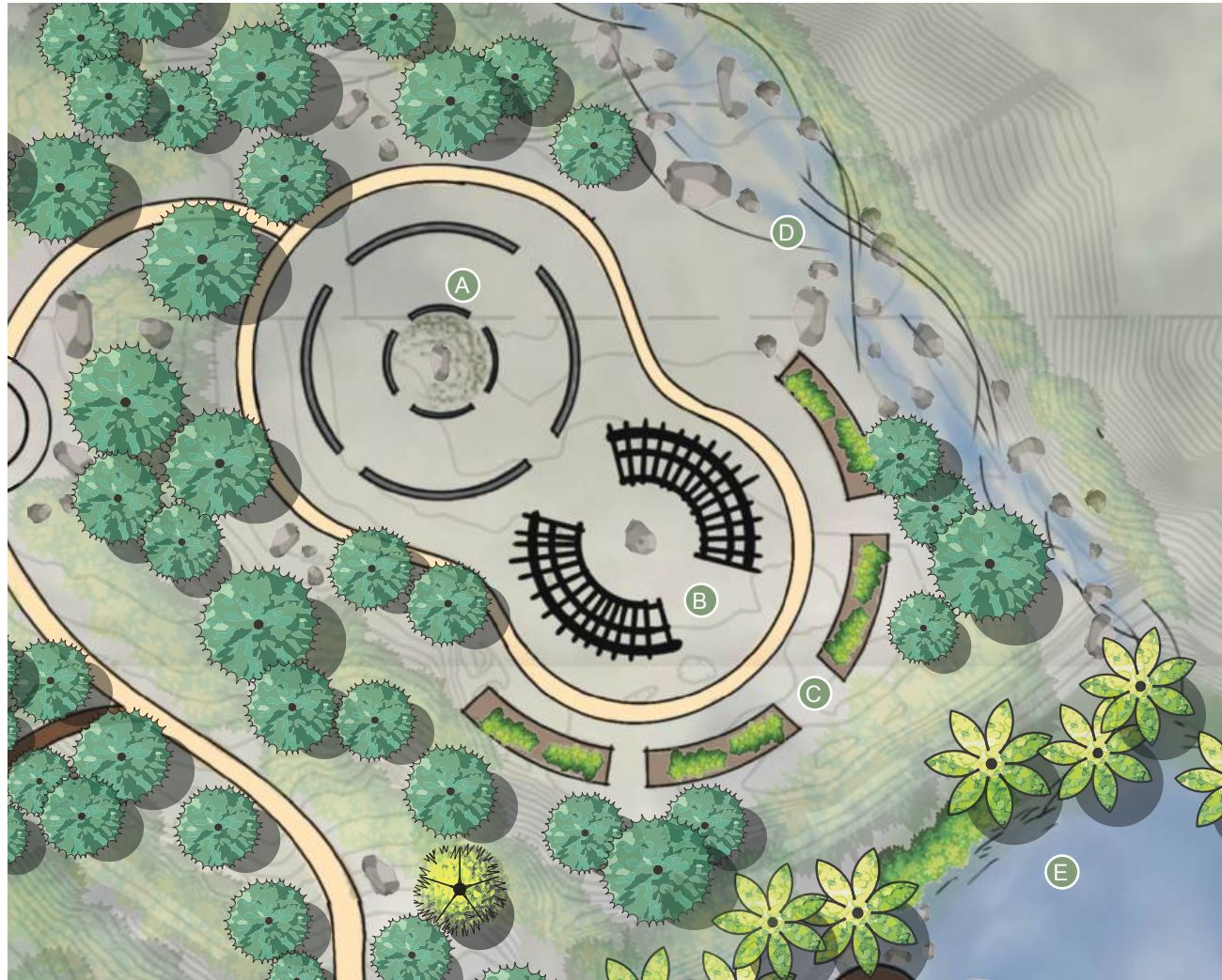
PERSPECTIVE



SECTION



ENLARGEMENT 5 - THE MESA - INDIGENOUS CEREMONIAL AREA



LEGEND

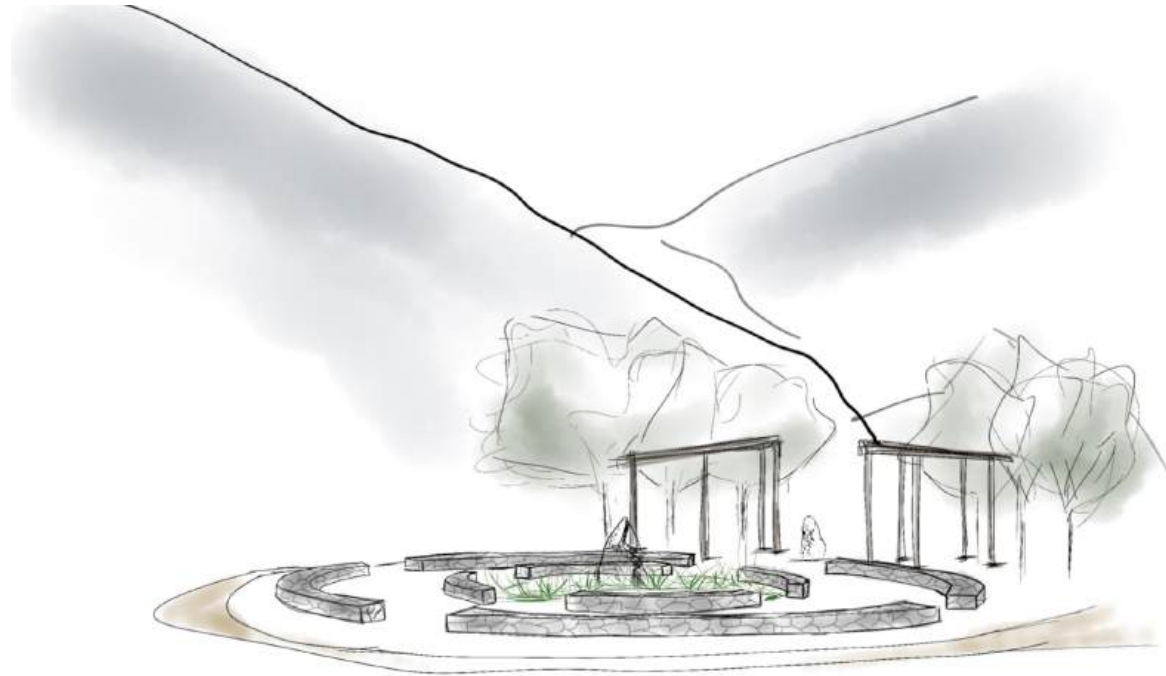
- A** Ceremonial Circle/
Grass Dance Center
- B** Shaded Ramada Seating
- C** Medicinal Garden
- D** Rerouted Creek -
Bioswale Rock Garden
- E** Azusa Springs

KEY MAP

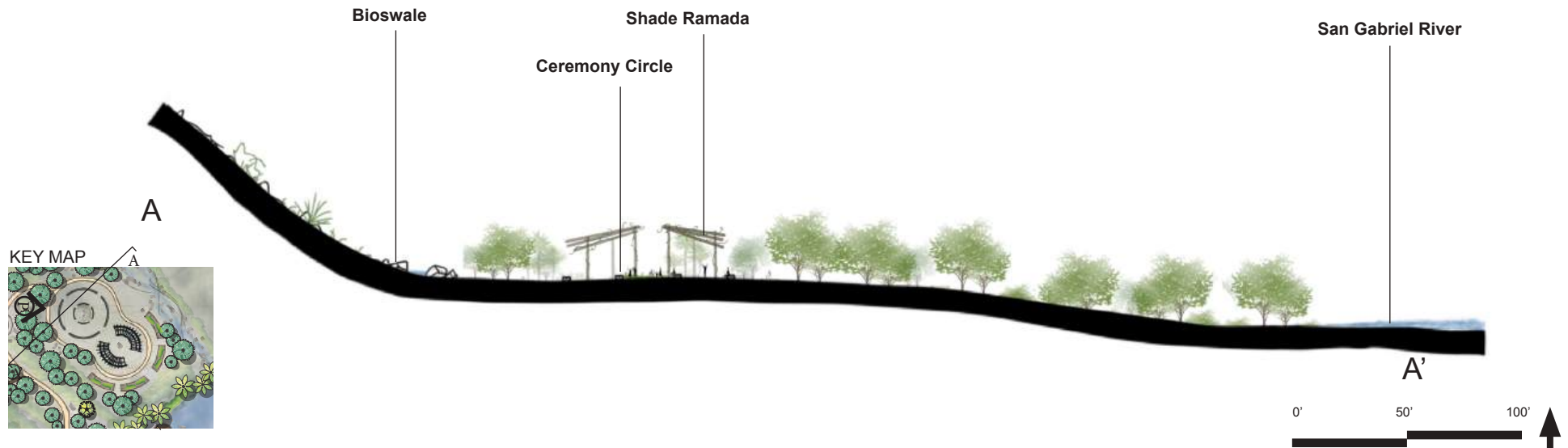


ENLARGEMENT 5 - THE MESA - INDIGENOUS CEREMONIAL AREA

PERSPECTIVE



SECTION



BIBLIOGRAPHY

1. <https://azusagis.maps.arcgis.com/apps/webappviewer/index.html?id=d12b74ec91d9400d8c9f342386a94681&extent=-13131047.2525%2C4043571.4541%2C-13124378.1218%2C4051043.1736%2C102100>
2. <https://planning.lacounty.gov/maps-and-gis/gis-data/>
3. <https://egis-lacounty.hub.arcgis.com/maps/lacounty::fire-hazard-severity-zones/about>
4. <https://experience.arcgis.com/experience/03beab8511814e79a0e4eabf0d3e7247/>
5. <https://egis-lacounty.hub.arcgis.com/datasets/lacounty::significant-ecological-area-sea/about>
6. <https://maps-cadoc.opendata.arcgis.com/datasets/arcgisdoc::southern-california-critical-habitat/explore?location=34.170698%2C-117.894177%2C13.44>
7. <https://hub.arcgis.com/documents/Wilderness::californias-wildlands/explore>
8. <https://hub.arcgis.com/documents/Wilderness::san-gabriel-mtns-nm/about?path=>
9. <https://egis-lacounty.hub.arcgis.com/datasets/lacounty::countywide-parks-and-open-space-public-hosted/about>
10. <https://apps.nationalmap.gov/datasets/-topography>
11. <https://ngmdb.usgs.gov/topoview/viewer/#16/34.1608/-117.8935>
12. <https://www.arcgis.com/home/item.html?id=99cd5fbd98934028802b4f797c4b1732>
13. <https://geohub.lacity.org/datasets/lacounty::landslide-zones/about>
14. <https://maps.conservation.ca.gov/geology/>
15. <https://egis-lacounty.hub.arcgis.com/datasets/major-watersheds-in-los-angeles-county-1/explore?location=34.182641%2C-118.072444%2C9.86>
16. <https://data.lacounty.gov/search?categories=%252Fcategories%252Fenvironment%252Fwater%2520and%2520hydrology>
17. https://data.lacounty.gov/datasets/ac7c7be055a14f71ad65a3a65dc3f1d5_36/explore?location=32.665567%2C-118.132046%2C6.29
18. <https://www.nps.gov/zion/index.htm>
19. <https://moool.com/en>
20. <https://moool.com/en/guitou-town-wetland-park-by-yxdesigners.html>
21. <https://moool.com/en/miaojing-river-by-plat-studio.html>
22. <https://laist.com/news/climate-environment/san-gabriel-mountains-national-monument-expansion-increases-access-to-nature-for-millions>
23. <https://www.latimes.com/environment/story/2023-06-26/a-plan-to-expand-san-gabriel-mountains-national-monument>
24. <https://mila.ss.ucla.edu>
25. <https://chatgpt.com>
26. <https://www.nnunezconsulting.com/about-us>
27. https://www.wca.ca.gov/azusa_wilderness_park
28. <https://www.landscapeperformance.org/case-study-briefs/yuma-east-wetlands-phases-1-and-2>
29. <https://www.archdaily.com/1027331/somes-river-park-regeneration-practica>



THANK YOU