

# HIDDEN OASIS

## RESIDENTIAL DESIGN

Callie Ham | LD5 | Pamela Brief | Spring 2025

# SITE ANALYSIS

## ENVIRONMENT

SLOPE 1% → SLOPE

WIND

SUN

## SIGHT + SOUND

VIEWS

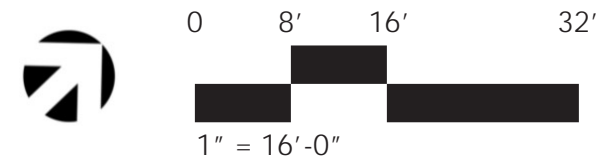
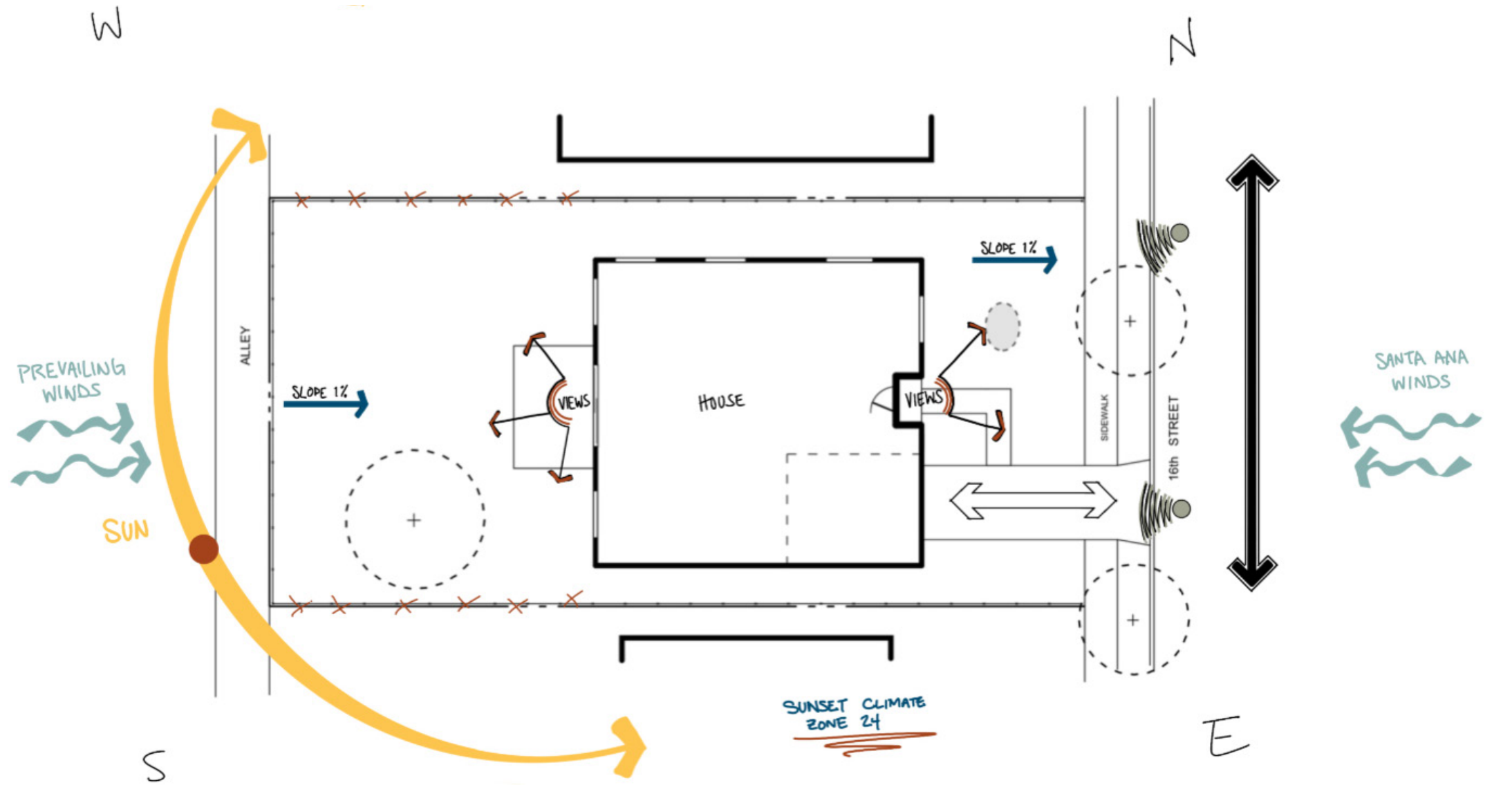
XX PRIVACY ISSUE

NOISE

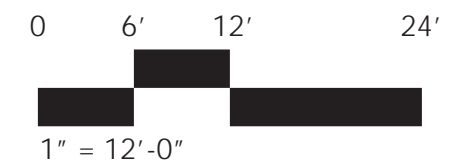
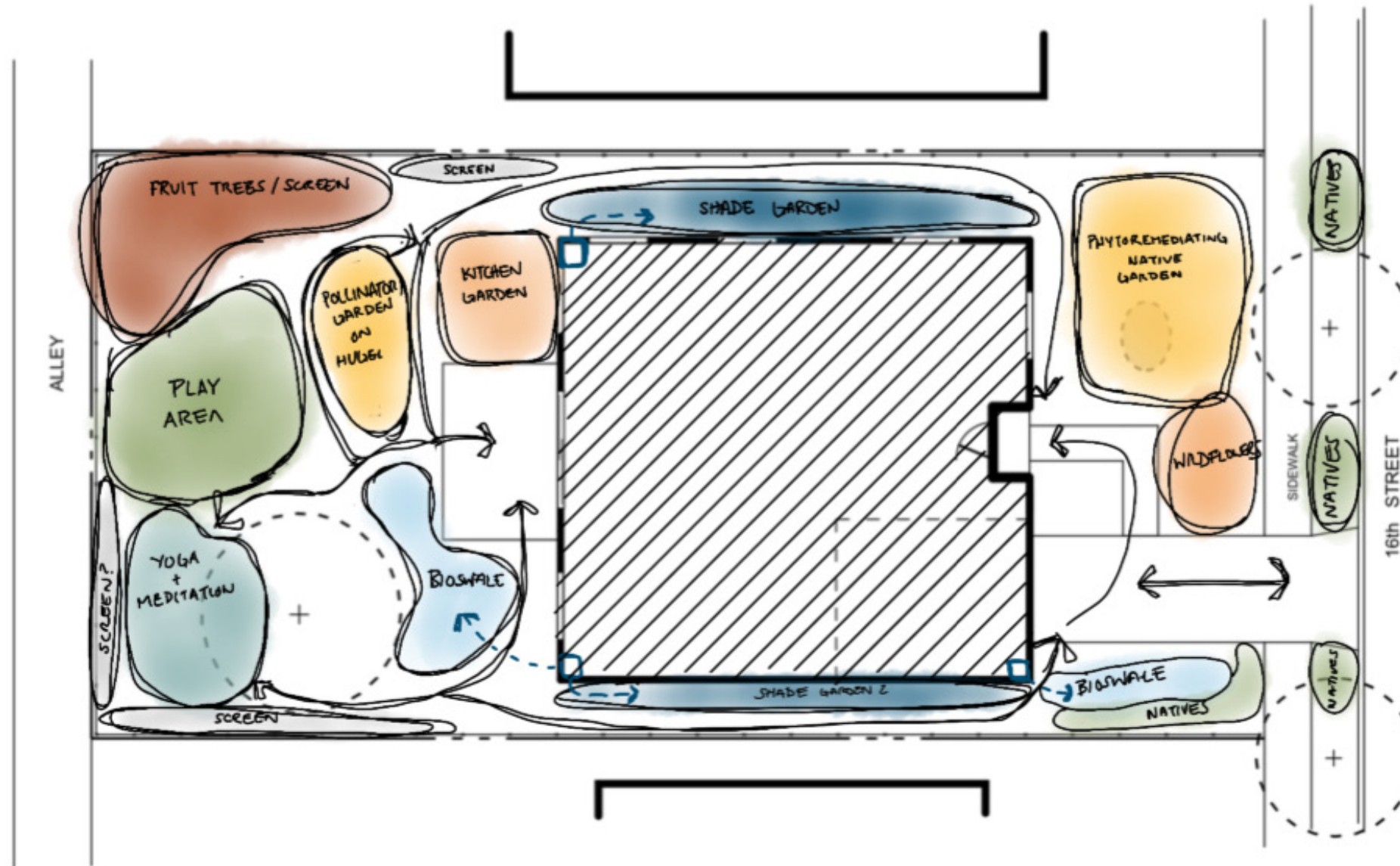
## VEHICULAR CIRCULATION

PRIMARY

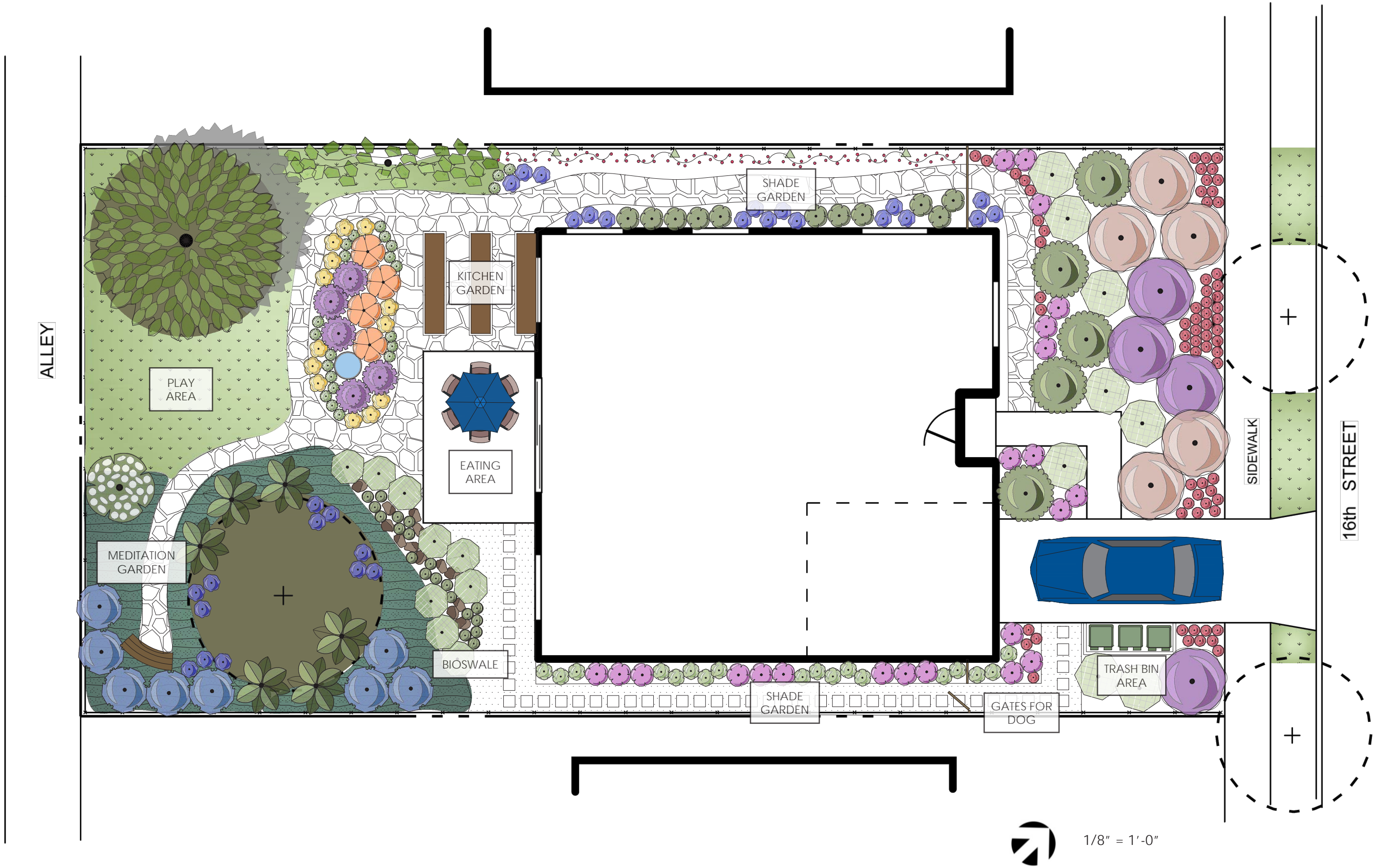
SECONDARY



# BUBBLE DIAGRAM



# SITE PLAN



# PLANT SCHEDULE

**SYMBOL   CODE   BOTANICAL / COMMON NAME   SIZE**

**TREES**



ACC SEL   *Acca sellowiana* / Pineapple Guava   24"

**SHRUBS**



ACH SBR   *Achillea millefolium* 'Summer Berries' / Summer Berries Mix Common Yarrow   4"



ASC FAS   *Asclepias fascicularis* / Narrowleaf Milkweed   5 gal.



ASP ELA   *Aspidistra elatior* / Cast Iron Plant   5 gal.



BER LYR   *Berlandiera lyrata* / Chocolate Daisy   5 gal.



CAR BAR   *Carex barbarae* / Santa Barbara Sedge   5 gal.



ENC CAL   *Encelia californica* / California Encelia   5 gal.



ERI WAR   *Eriogonum fasciculatum* 'Warriner Lytle' / Warriner Lytle California Buckwheat   15 gal.



HEU CXM   *Heuchera* x 'Timeless Night' / Timeless Night Coral Bells   5 gal.



JUN BLW   *Juncus inflexus* 'Blue Arrows' / Blue Arrows Juncus   5 gal.



MAI STE   *Maianthemum stellatum* / False Lily of the Valley   5 gal.



MUH RIG   *Muhlenbergia rigens* / Deer Grass   15 gal.



ROM COU   *Romneya coulteri* / Matilija Poppy   15 gal.



SAL LEU   *Salvia leucantha* / Mexican Bush Sage   5 gal.



SAL LA2   *Salvia spathacea* 'Las Pillitas' / Las Pillitas Hummingbird Sage   5 gal.



SAL BEE   *Salvia* x 'Bee's Bliss' / Bee's Bliss Sage   15 gal.



SPH AM2   *Sphaeralcea ambigua* / Desert Globemallow   15 gal.



TEU AZU   *Teucrium fruticans* 'Azureum' / Azure Bush Germander   15 gal.



WOO FIM   *Woodwardia fimbriata* / Giant Chain Fern   15 gal.



**SYMBOL   CODE   BOTANICAL / COMMON NAME   SIZE   SPACING   QTY**

**VINE/ESPALIER**



CAM SAS   *Camellia sasanqua* / Sasanqua Camellia   15 gal.   4

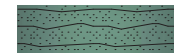


FIC BL5   *Ficus carica* 'Black Mission' / Black Mission Fig   15 gal.   1

**GROUND COVERS**

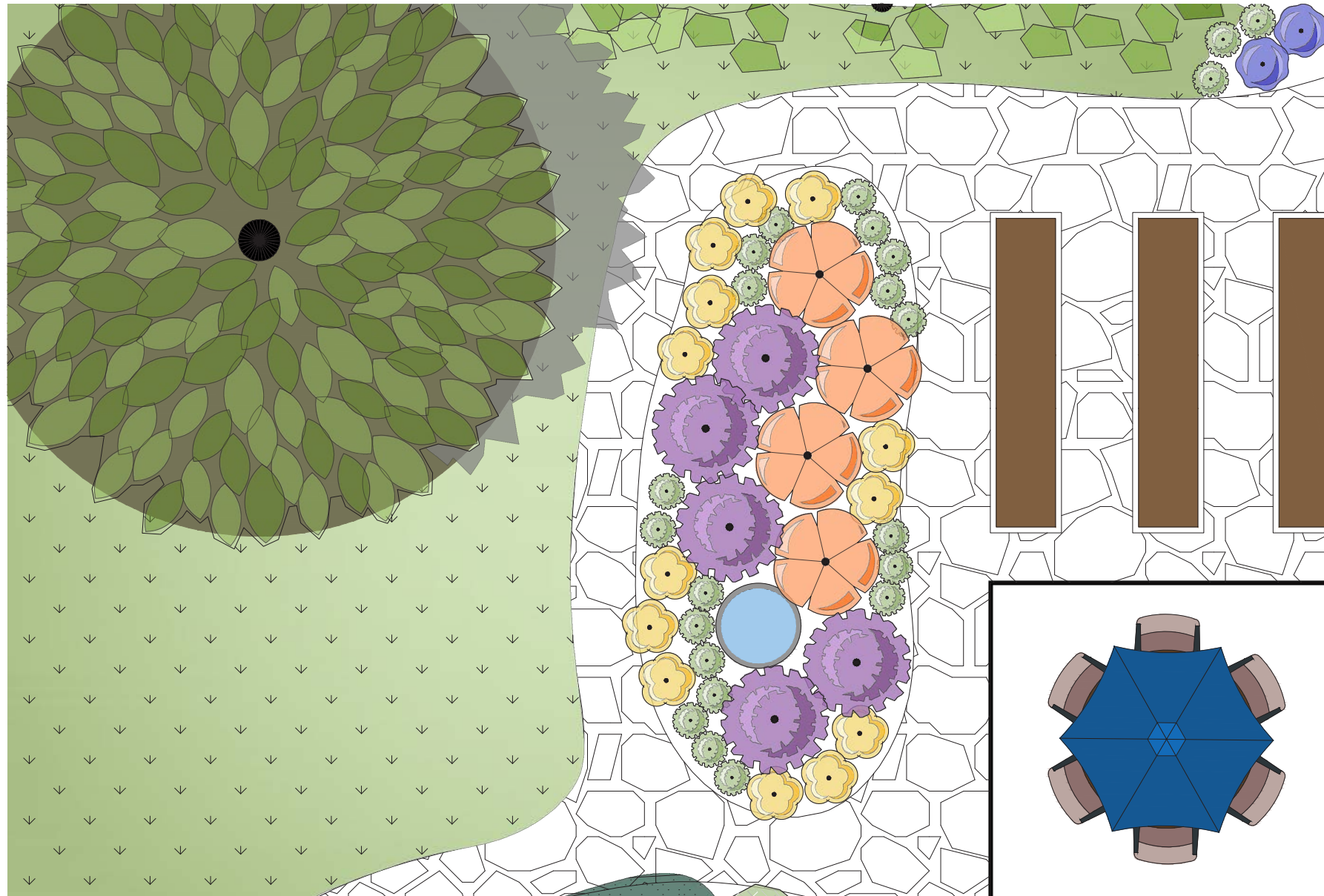









BOU GRA   *Bouteloua gracilis* / Blue Grama Grass   flat   4" o.c.   6,596



LIP NOD   *Lippia nodiflora* / Lippia   flat   4" o.c.   3,203

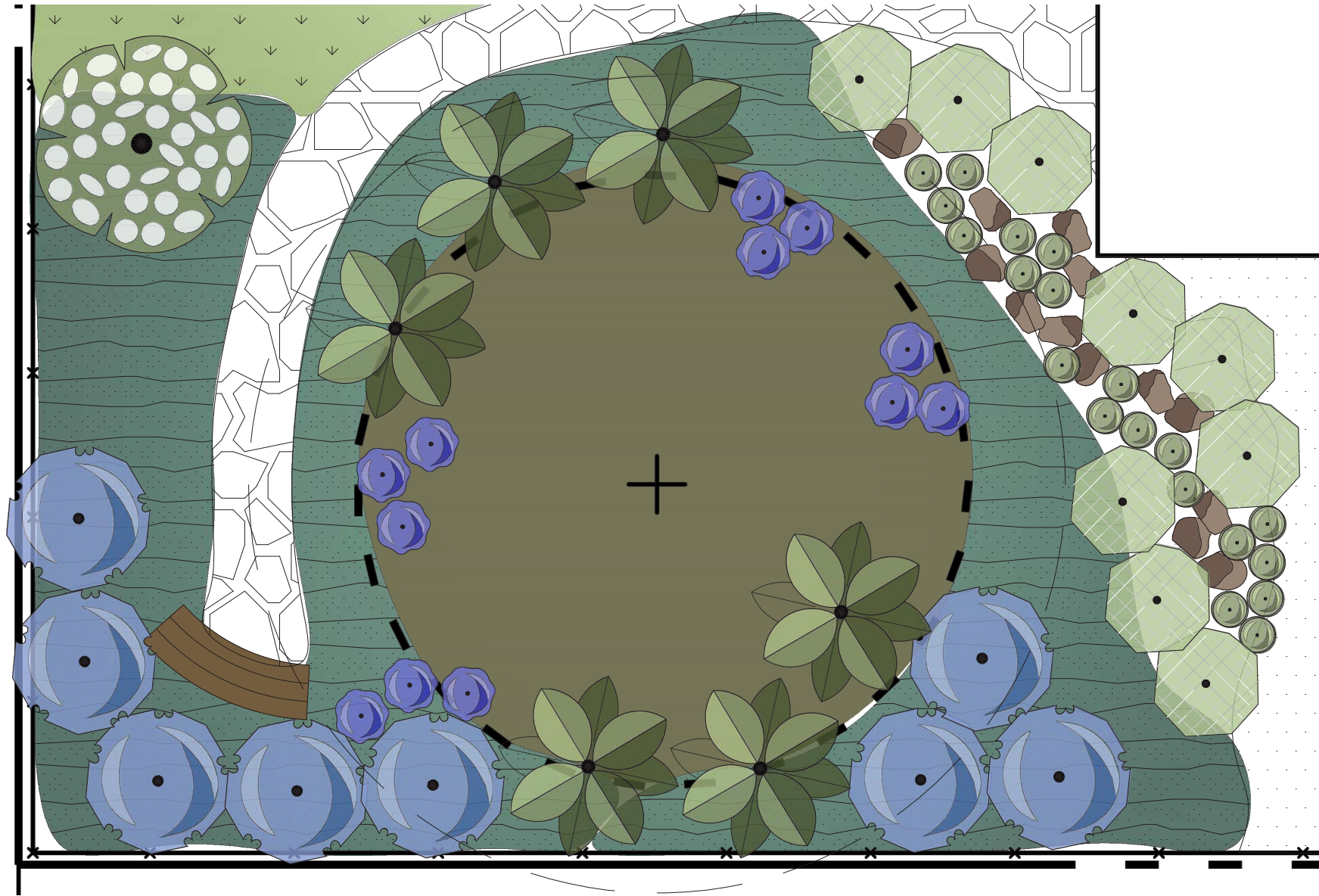
# ENLARGEMENT: PLAY AREA & POLLINATOR GARDEN



SYMBOL	CODE	BOTANICAL / COMMON NAME	SIZE	QTY
<b>TREES</b>				
	ACC SEL	<i>Acca sellowiana</i> / Pineapple Guava	24"	1
<b>SHRUBS</b>				
	ASC FAS	<i>Asclepias fascicularis</i> / Narrowleaf Milkweed	5 gal.	22
	BER LYN	<i>Berlandiera lyrata</i> / Chocolate Daisy	5 gal.	13
	SAL LEU	<i>Salvia leucantha</i> / Mexican Bush Sage	5 gal.	5
	SPH AM2	<i>Sphaeralcea ambigua</i> / Desert Globemallow	15 gal.	4
<b>VINE/ESPALIER</b>				
	FIC BL5	<i>Ficus carica</i> 'Black Mission' / Black Mission Fig	15 gal.	1
<b>GROUND COVERS</b>				
	BOU GRA	<i>Bouteloua gracilis</i> / Blue Grama Grass	flat	5,769



# ENLARGEMENT: MEDITATION & BIOSWALE



SYMBOL	CODE	BOTANICAL / COMMON NAME	SIZE	QTY
<b>SHRUBS</b>				
	CAR BAR	Carex barbae / Santa Barbara Sedge	5 gal.	9
	HEU CXM	Heuchera x 'Timeless Night' / Timeless Night Coral Bells	5 gal.	12
	JUN BLW	Juncus inflexus 'Blue Arrows' / Blue Arrows Juncus	5 gal.	20
	ROM COU	Romneya coulteri / Matilija Poppy	15 gal.	1
	TEU AZU	Teucrium fruticans 'Azureum' / Azure Bush Germander	15 gal.	8
	WOO FIM	Woodwardia fimbriata / Giant Chain Fern	15 gal.	6
<b>GROUND COVERS</b>				
	LIP NOD	Lippia nodiflora / Lippia	flat	3,203

 1/4" = 1'-0"

# PLANT PALETTE

## FRONT YARD



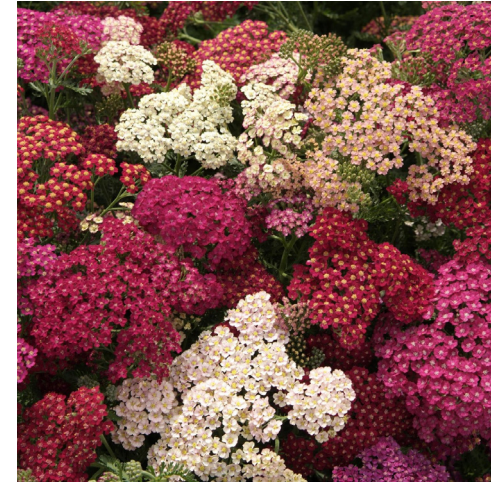
**Bush Sunflower**  
*Encelia californica*



**Deergrass**  
*Muhlenbergia rigens*



**Warriner Lytle Buckwheat**  
*Eriogonum fasciculatum*  
'Warriner Lytle'



**Yarrow 'Summer Berries'**  
*Achillea millefolium*



**Bee's Bliss Sage**  
*Salvia 'Bee's Bliss'*

## SHADE GARDENS



**Hummingbird Sage 'Las Pilitas'**  
*Salvia spathacea 'Las Pilitas'*



**False Solomon Seal**  
*Maianthemum stellatum*



**Camellia Sasanqua**  
*Camellia sasanqua*



**Cast Iron Plant**  
*Aspidistra elatior*



**Valley Sedge**  
*Carex barbarae*



**Hard Rush 'Blue Arrows'**  
*Juncus Inflexus 'Blue Arrows'*

## BIOSWALE

# PLANT PALETTE

## POLLINATOR GARDEN



**Mexican Sage**  
*Salvia leucantha*



**Narrowleaf Milkweed**  
*Asclepias fascicularis*



**Globemallow**  
*Sphaeralcea*



**Chocolate Daisy Flower**  
*Berlandiera lyrata*

## FRUIT TREES



**Pineapple Guava**  
*Feijoa sellowiana*



**Black Mission Fig**  
*Ficus carica 'Black Mission'*  
\*Espalier

## FRONT YARD



**Giant Chain Fern**  
*Woodwardia fimbriata*



**Coral Bells**  
*Heuchera 'Timeless Night'*



**Matilija poppy**  
*Romneya coulteri*



**Bush Germander** (as hedge)  
*Teucrium fruticans 'Azureum'*

## GROUND COVERS



**Kurapia**  
*Lippia nodiflora*



**Blue Grama**  
*Bouteloua gracilis*

MEDITATION

# PLANT DATA

Common Name Scientific Name	Plant Family	Height Spread	Sun	WUC OLS	Summer Water	Soil Requirements	Bloom Color & Season	Native	Wildlife	Maintenance Needs
<b>FRONT YARD</b>										
<b>Bush Sunflower</b> <i>Encelia californica</i>	Asteraceae	2 - 5 ft Tall 3 - 7 ft Wide	Partial shade to full sun	VL - L	Summer deciduous	Soil pH 6-8	Brown, Purple, Yellow Winter, Spring	CA	Birds, bees, caterpillars, butterflies	
<b>Warriner Lytle Buckwheat</b> <i>Eriogonum fasciculatum</i> 'Warriner Lytle'	Polygonaceae	1 - 2 ft Tall 4 - 8 ft Wide	Full sun	VL - L	Don't irrigate once established	Tolerates a variety of soils Soil pH 5-8.5	Cream, Pink, White Summer	CA	Bats, birds, bees, caterpillars, butterflies	Can handle hard pruning; taller varieties can even be shaped into edged/hedged plantings.
<b>Deegrass</b> <i>Muhlenbergia rigens</i>	Poaceae	4 - 5 ft Tall 4 ft Wide	Full sun	L - M	Max 1x / month once established	Tolerant of sand and clay. Tolerates serpentine soil. Soil PH: 5.0 - 8.0	Yellow, Cream Spring	CA	Birds, caterpillars, butterflies	Can be cut back in fall if it becomes unruly
<b>Bee's Bliss Sage</b> <i>Salvia 'Bee's Bliss'</i>	Lamiaceae	2 ft Tall 6 - 8 ft Wide	Full sun	VL	Max 1x / month once established	Adaptable	Purple, Lavender, Pink Spring, Summer	CA	Hummingbirds, bees, butterflies	Can be pinched back to maintain size and shape.
<b>Yarrow</b> <i>Achillea millefolium</i>	Asteraceae	1 - 3 ft Tall 6 - 18 in Wide	Full Sun, Partial Shade, Deep Shade	L	Max 1x / week once established	Variable except wet Soil PH: 4 - 8	Summer, Spring	CA	Bats, birds, bees, caterpillars, butterflies	Deep roots prevent soil erosion
<b>SHADE GARDENS</b>										
<b>Hummingbird Sage 'Las Pilitas'</b> <i>Salvia spathacea 'Las Pilitas'</i>	Lamiaceae	1 - 2 ft Tall 2 - 4 ft Wide	Partial Shade	L	Max 2x / month once established	Tolerates a variety of soils. Soil PH: 5.0 - 7.0	Rose Pink Spring, Summer	CA	Hummingbirds, bats, birds, bees, caterpillars, butterflies	Can be deadheaded and lightly pruned in summer
<b>False Solomon Seal</b> <i>Maianthemum stellatum</i>	Ruscaceae	2 ft Tall 1 - 2 ft Wide	Deep Shade, Partial Shade	L - M	Max 1x / week once established	Prefers rich, loose, but well-drained soils with lots of humus. Soil PH: 5.0 - 7.0	White, Red Spring	N. America	Caterpillars, butterflies	For propagating by seed: 6 mos. cold, 3 mos. warm, and 5 mos. cold stratification.
<b>Camellia Sasanqua</b> <i>Camellia sasanqua</i>	Theaceae	6 - 10 ft Tall 6 - 10 ft Wide	Partial shade, full sun	M		Prefers acidic, well-drained soil	White Spring, Summer	China, Japan	Bees	May be used as hedge or screen
<b>Cast Iron Plant</b> <i>Aspidistra elatior</i>	Asparagaceae	2 - 3 ft Tall 2 - 3 ft Wide	Deep shade	L	Water occasionally	Well-drained	Brown Spring	China	Bees	
<b>BIOSWALE</b>										
<b>Hard Rush 'Blue Arrows'</b> <i>Juncus inflexus 'Blue Arrows'</i>	Juncaceae	1 - 3 ft Tall 1 ft Wide	Partial shade, full sun	M	Max 1x / month once established	Alkaline to neutral Soil PH: 5.5 - 7.0	Brown	NorCal, Oregon	Caterpillars, butterflies	
<b>Valley Sedge</b> <i>Carex barbarae</i>	Cyperaceae	2 - 3 ft Tall 3 ft Wide	Partial shade	L - H	Max 1x / week once established	Tolerates a variety of soils. Soil PH: 5.5 - 8.0	Cream, Purple, Red Summer	NorCal, Oregon	Bats, caterpillars, butterflies	

# PLANT DATA

Common Name Scientific Name	Plant Family	Height Spread	Sun	WUC OLS	Summer Water	Soil Requirements	Bloom Color & Season	Native	Wildlife	Maintenance Needs
<b>POLLINATOR GARDEN</b>										
<b>Chocolate Daisy Flower</b> <i>Berlandiera lyrata</i>	Asteraceae	1 - 2 ft Tall 1 - 2 ft Wide	Full sun	L	Drought tolerant	Prefers slightly alkaline, sandy or gravelly soils.	Yellow May to October	Southern US, Mexico	Butterflies, hummingbirds`	May self-seed in the garden. Easily grown from seed.
<b>Desert Globemallow</b> <i>Sphaeralcea ambigua</i>	Malvaceae	3 - 5 ft Tall 2 - 4 ft Wide	Full sun	VL - L	Max 1x / month once established	Adaptable, but prefers fast-draining desert soil. Soil PH: 6.0 - 8.0	Red, Orange, Pink, Lavender Spring, Winter	CA	Bats, Bees, Caterpillars, Butterflies	A good pruning after blooming will help to keep it from getting too woody
<b>Mexican Sage</b> <i>Salvia leucantha</i>	Lamiaceae	2 - 3 ft Tall 2 - 3 ft Wide	Full sun	L	Water during summer	Acidic, neutral, or alkaline	Purple, pink, white Summer	N. America, C. America	Butterflies, hummingbirds	Shear two or three times during the spring and summer.
<b>Narrowleaf Milkweed</b> <i>Asclepias fascicularis</i>		2 - 3 ft Tall 1 ft Wide	Full sun	VL - L	Max 2x / month once established	Tolerates saline soil. Soil PH: 6.0 - 8.0	Lavender, Pink, White	CA	Birds, caterpillars, Monarch butterflies	Winter deciduous
<b>FRUIT TREES &amp; PLAY AREA</b>										
<b>Black Mission Fig</b> <i>Ficus carica</i> 'Black Mission'	Moraceae	15 - 30 ft Tall 15 - 30 ft Wide	Full sun to part shade	L - M	Occasional deep watering for fruit	Well-drained; tolerates poor soil	Insignificant Fruit summer - fall	Mediterranean, W. Asia	Birds	Prune in late winter or early spring
<b>Pineapple Guava</b> <i>Feijoa sellowiana</i>	Myrtaceae	10 - 20 ft Tall 10 - 20 ft Wide	Full sun to part shade	L	Occasional deep watering for fruit	Well-drained; tolerates poor soil	Red & white Spring - early summer	S. America	Birds, bees	Prune in fall
<b>Blue Grama</b> <i>Bouteloua gracilis</i>	Poaceae	1 - 2 ft Tall 1 - 1.5 ft Wide	Full sun	VL	Very low	Well-drained; clay, sand, rocky	Purple, tan Summer	West / Central U.S.	Birds, caterpillars	
<b>MEDITATION GARDEN</b>										
<b>Bush Germander</b> <i>Teucrium fruticans</i> 'Azureum'	Lamiaceae	3 - 4 ft Tall 4 - 5 ft Wide	Full sun	L	Low once established	Well-drained; tolerates poor, rocky, or alkaline soils	Dark Blue, Purple Summer/Fall	Europe	Bees, butterflies	Can shear and use as hedge
<b>Giant Chain Fern</b> <i>Woodwardia fimbriata</i>	Blechnaceae	4 - 6 ft Tall 3 - 8 ft Wide	Full to partial shade	M	Should not completely dry out	Rich, moist, well-drained soils with organic matter	Insignificant	Pacific NW		Remove old fronds annually
<b>Coral Bells</b> <i>Heuchera</i> 'Timeless Night'	Saxifragaceae	8 - 10 in Tall 1 - 1.5 ft Wide	Full sun, part shade, full shade	M	Dry shade once established	Salt tolerant. Acidic or neutral	Pink Summer	N. America (cultivar)	Bees, butterflies, hummingbirds	
<b>Matilija poppy</b> <i>Romneya coulteri</i>	Papaveraceae	7 - 10 ft Tall 20 ft Wide	Full sun	VL - L	Never irrigate once established	Prefers sandy or gravelly soil with fast drainage. Soil PH: 5.0 - 8.0	Yellow, White Summer, Spring	CA	Caterpillars, butterflies	Cut down to 6 inches in late Summer or Fall.
<b>Kurapia</b> <i>Lippia Nodiflora</i>	Verbenaceae	1 - 3 in Tall 6 - 10 ft Wide	Full sun to part shade	VL	Low once established	Adaptable; prefers well- drained soils but tolerates clay and sandy soils	White Spring - fall	Asia	Bees	Mowing optional