



BELLA SMITH

INTRODUCTION TO THE LANDSCAPE DESIGN PROFESSIONS

STEVE LANG

FALL 2024

CENTRAL COAST ELEMENTARY SCHOOL SITE PROPOSAL

MISSION:

“TO POSITIVELY IMPACT THE
SOCIAL AND INTELLECTUAL GROWTH
OF EVERY CHILD, EVERY DAY.”

– MARY MCGUIRE





SITE PLAN GOALS:

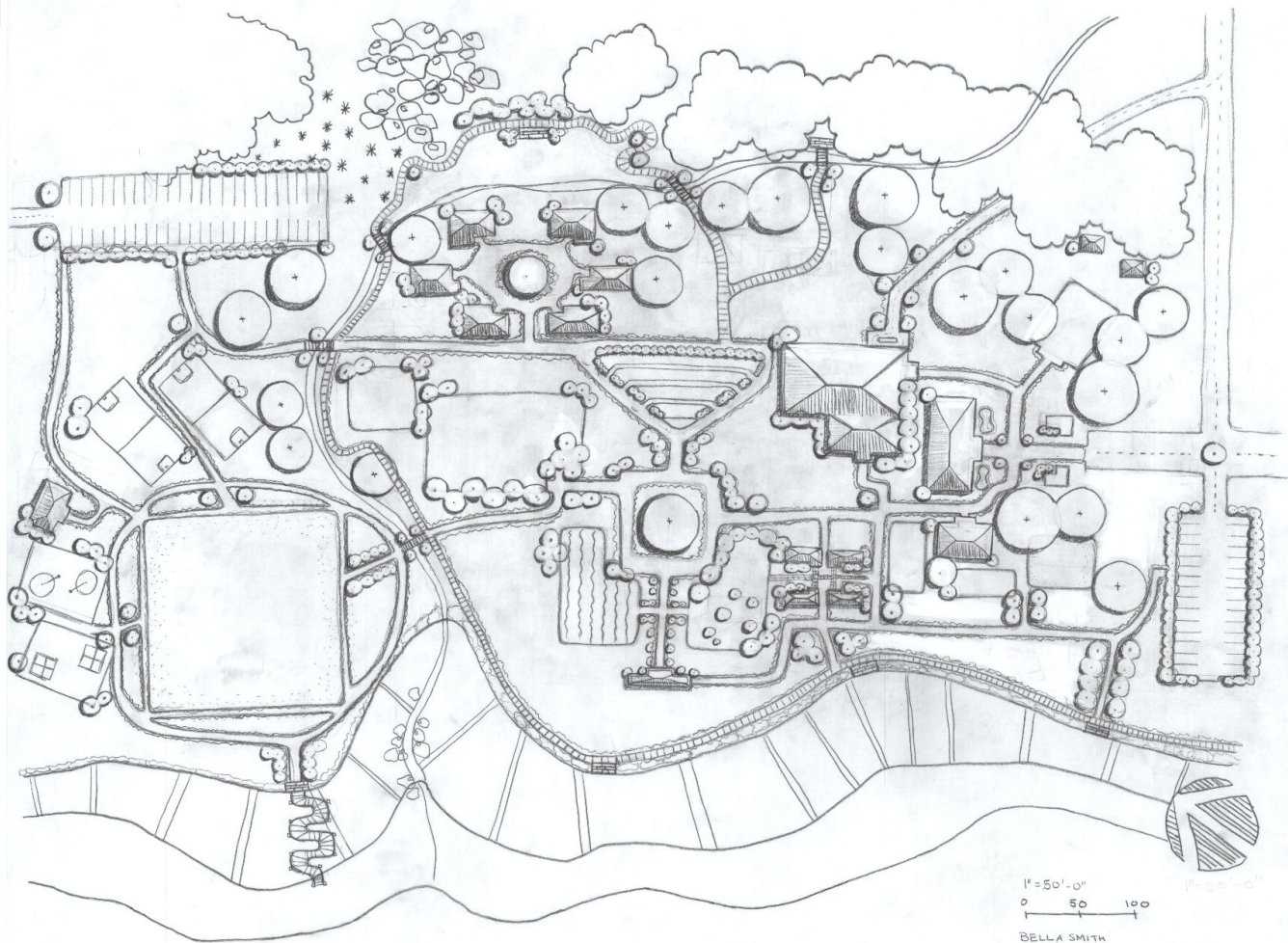
- TO NOT ALTER THE EXISTING LAND AND NATURAL FEATURES
- TO CREATE AN CREATIVE & ENGAGING OUTDOOR LEARNING ENVIRONMENT BEYOND THE TYPICAL CLASSROOM WITH THE HERITAGE OAK AS THE CENTER
- TO KEEP THE KINDERGARTEN AREA CONFINED AND SEPARATE FROM OTHER CAMPUS STRUCTURES & ACTIVITIES
- TO CREATE AN ATHLETIC AREA SEPARATE FROM THE CAMPUS WITH INTENT OF KEEPING NOISE LEVELS TO A MINIMUM

DESIGN GOALS:

- MAINTAIN A NATURAL AND MINIMALISTIC AESTHETIC WITH A MODERN TOUCH
- TO CREATE AN EARTHY, BEACH-INSPIRED AESTHETIC THAT AUTHENTICALLY AUTHENTICALLY REFLECTS THE CAMPUSES GEOGRAPHIC LOCATION
- TO STRATEGICALLY PLACE STRUCTURES ALLOWING AMPLE OPEN SPACE
- TO KEEP THE OCEAN VIEW AS UNOBSTRUCTED AS POSSIBLE



50' SCALE PLAN



1" = 50'-0"
0 50 100

BELLA SMITH
INTRODUCTION TO LANDSCAPE PROFESSIONS
FALL 2014

50' SCALE PLAN

PARKING 2

UPPER SCHOOL CLASSROOMS

ATHLETIC AREA

GARDEN/ORCHARD

MEDITATION/READING GARDEN

LIBRARY

HERITAGE OAK

AUDITORIUM

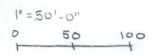
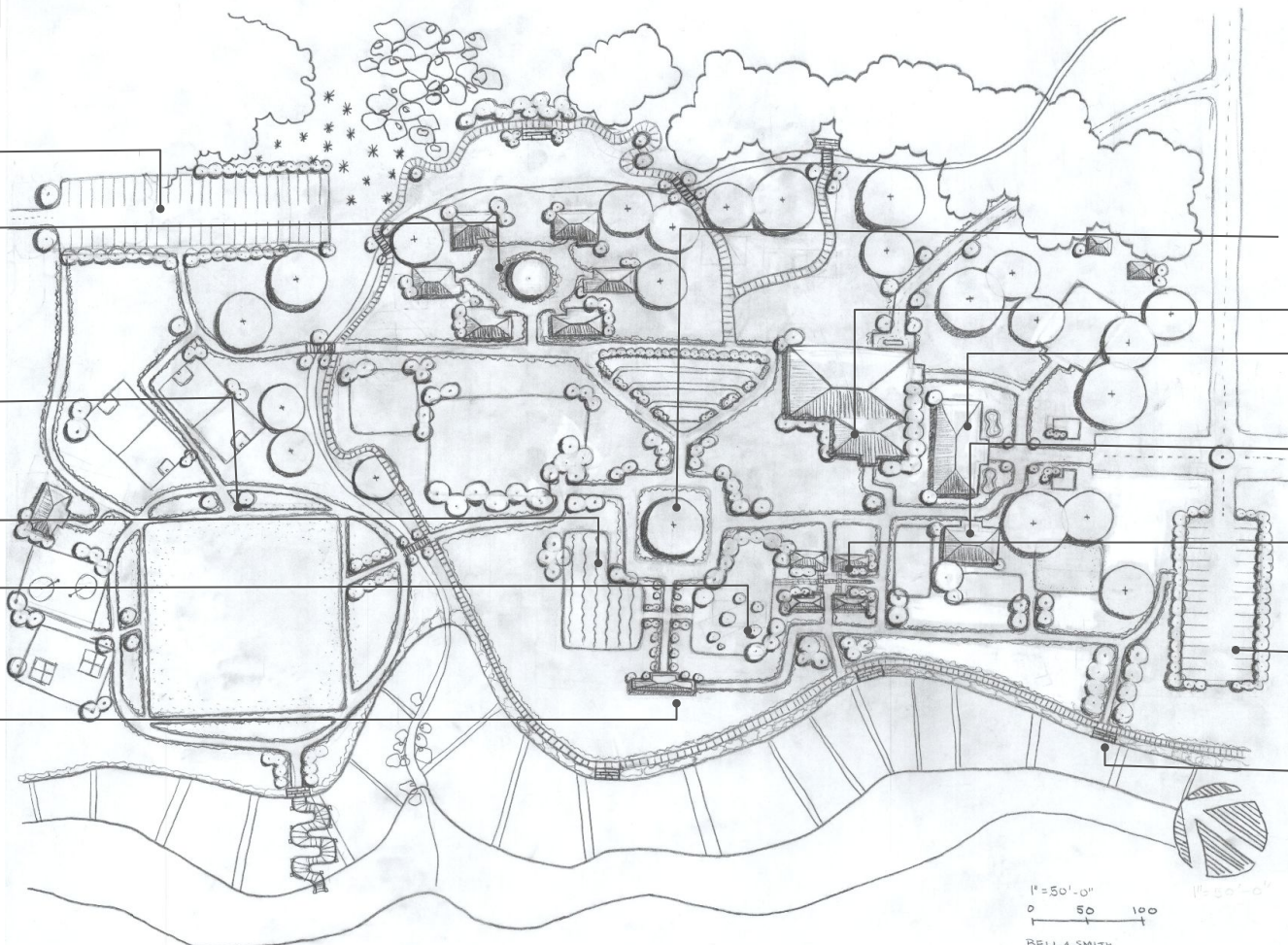
ADMIN BLDG

KINDERGARTEN AREA

ENRICHMENT CLASSROOMS

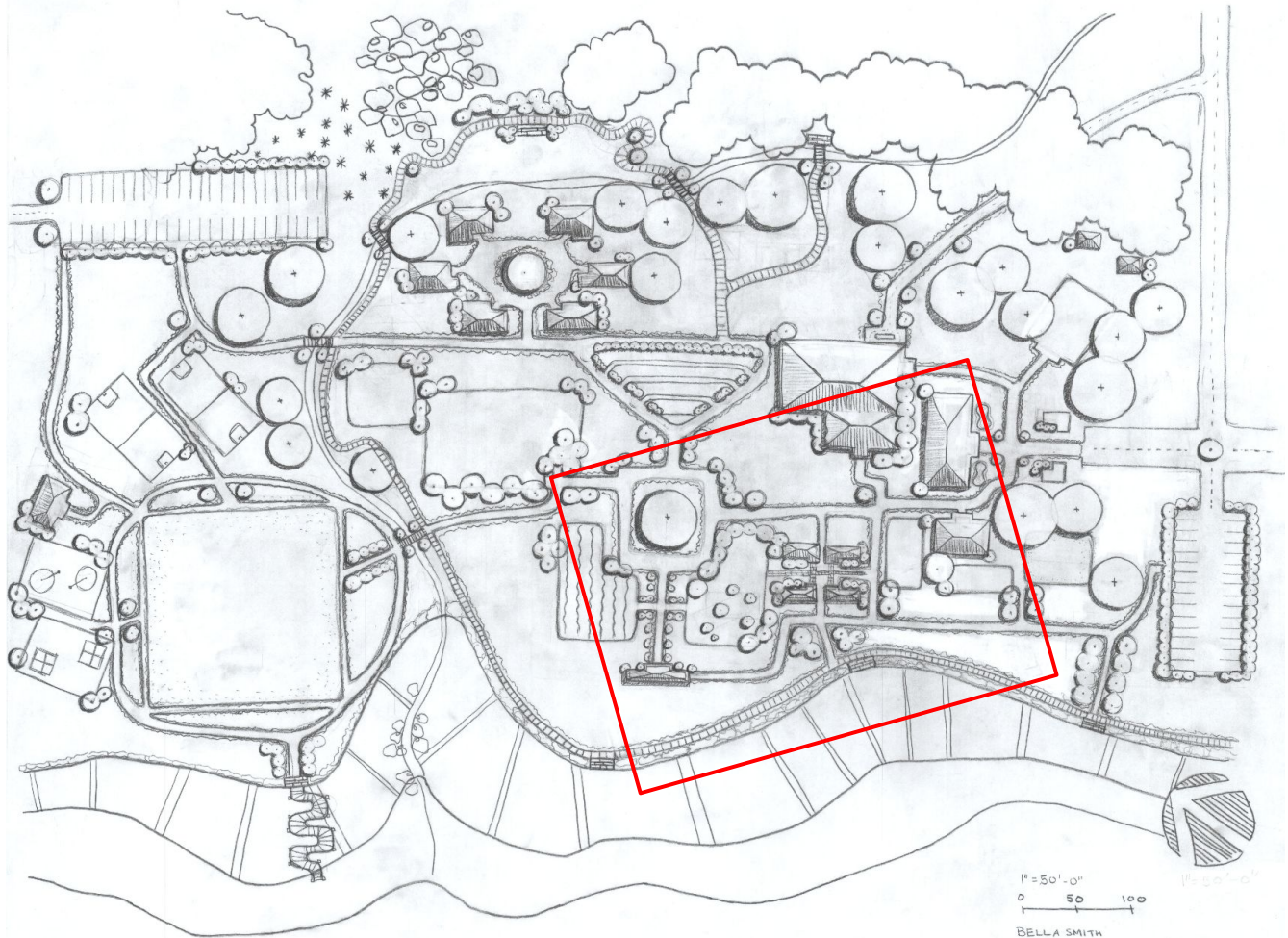
PARKING 1

OBSERVATION DECK



BELLA SMITH
INTRODUCTION TO LANDSCAPE PROFESSIONS
FALL 2014

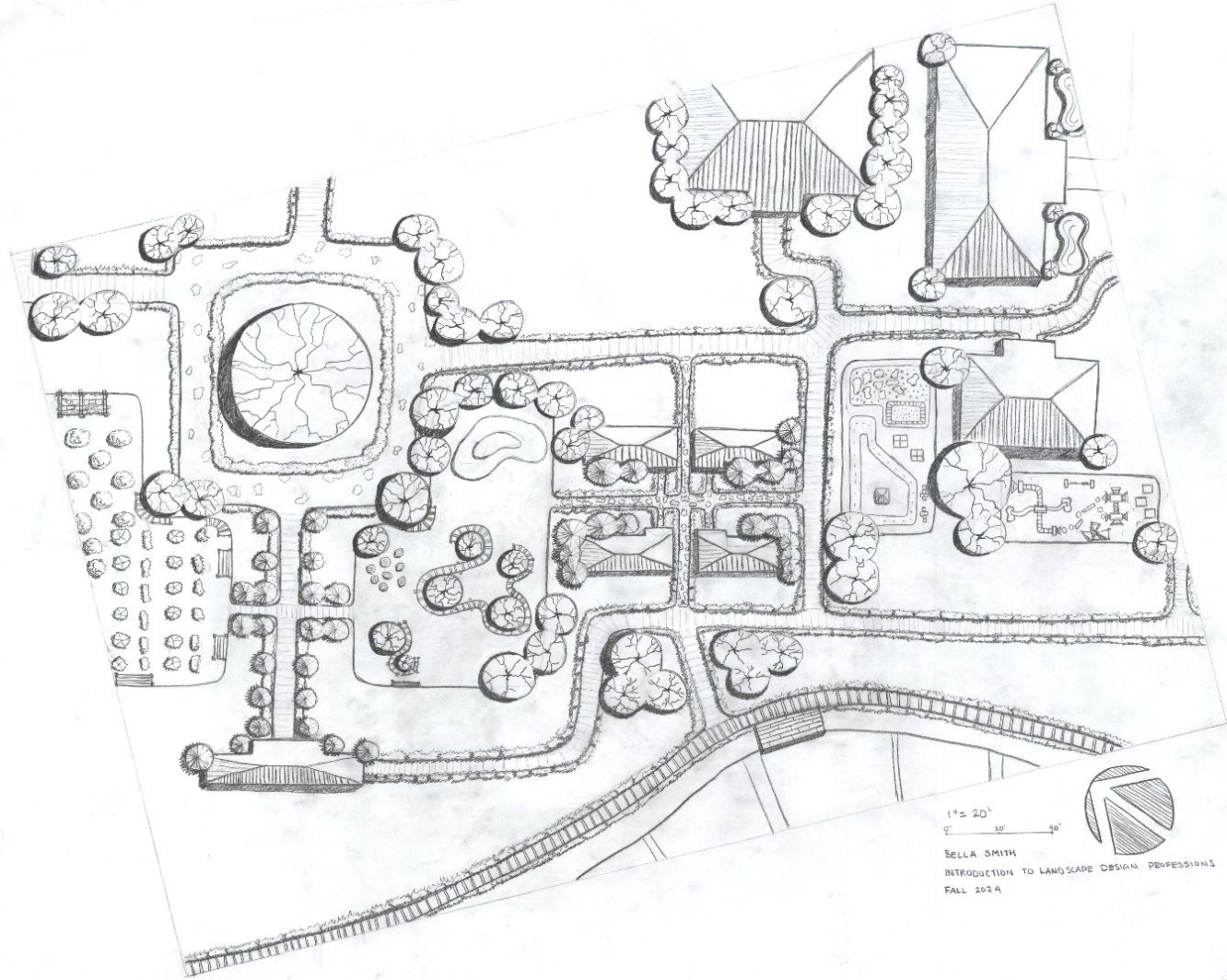
ENLARGED SECTION



1" = 50'-0"
0 50 100

BELLA SMITH
INTRODUCTION TO LANDSCAPE PROFESSIONS
FALL 2024

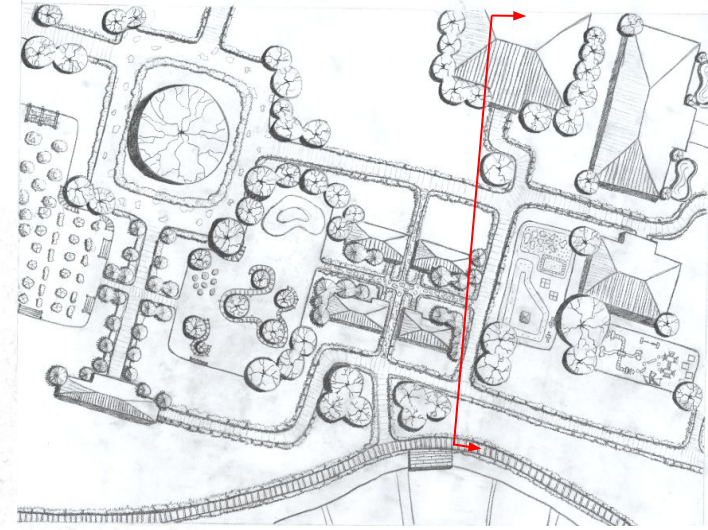
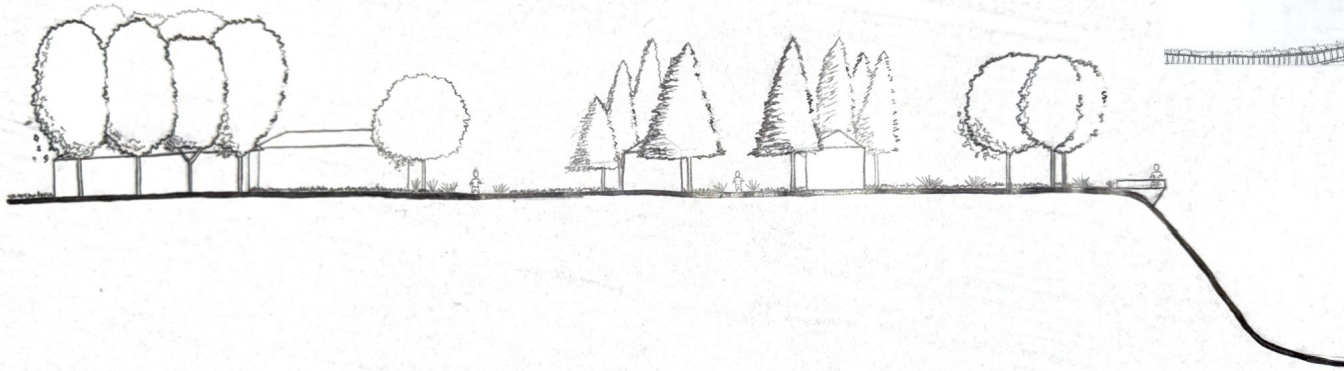
20' SCALE ENLARGEMENT



1" = 20'
0' 20' 40'

BELLA SMITH
INTRODUCTION TO LANDSCAPE DESIGN PROFESSIONALS
FALL 2024

SECTION LINE



BELLA SMITH

1" = 20'

0' 20' 40'

INTRODUCTION TO LANDSCAPE
DESIGN PROFESSIONS

MODEL PLAN VIEW



