

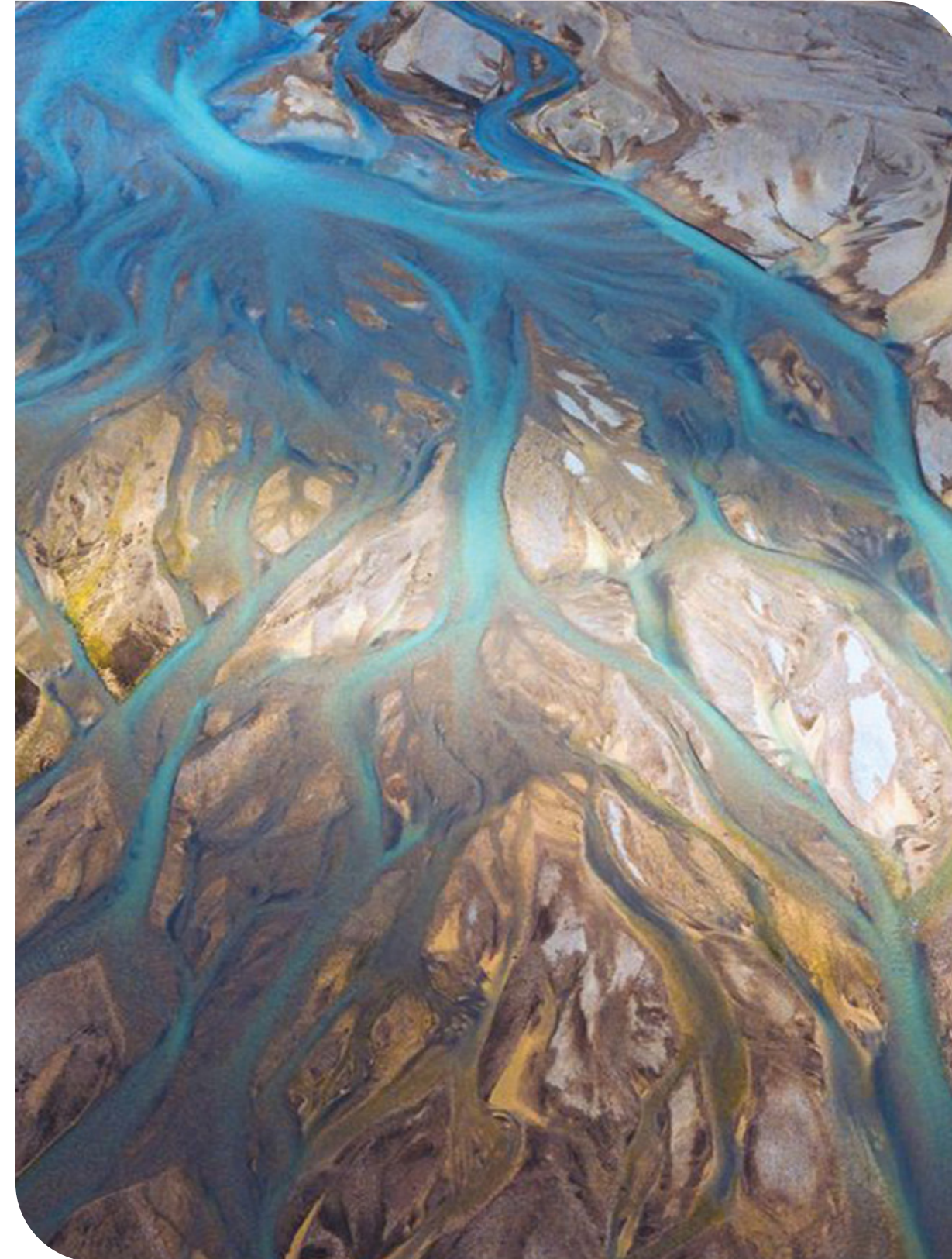
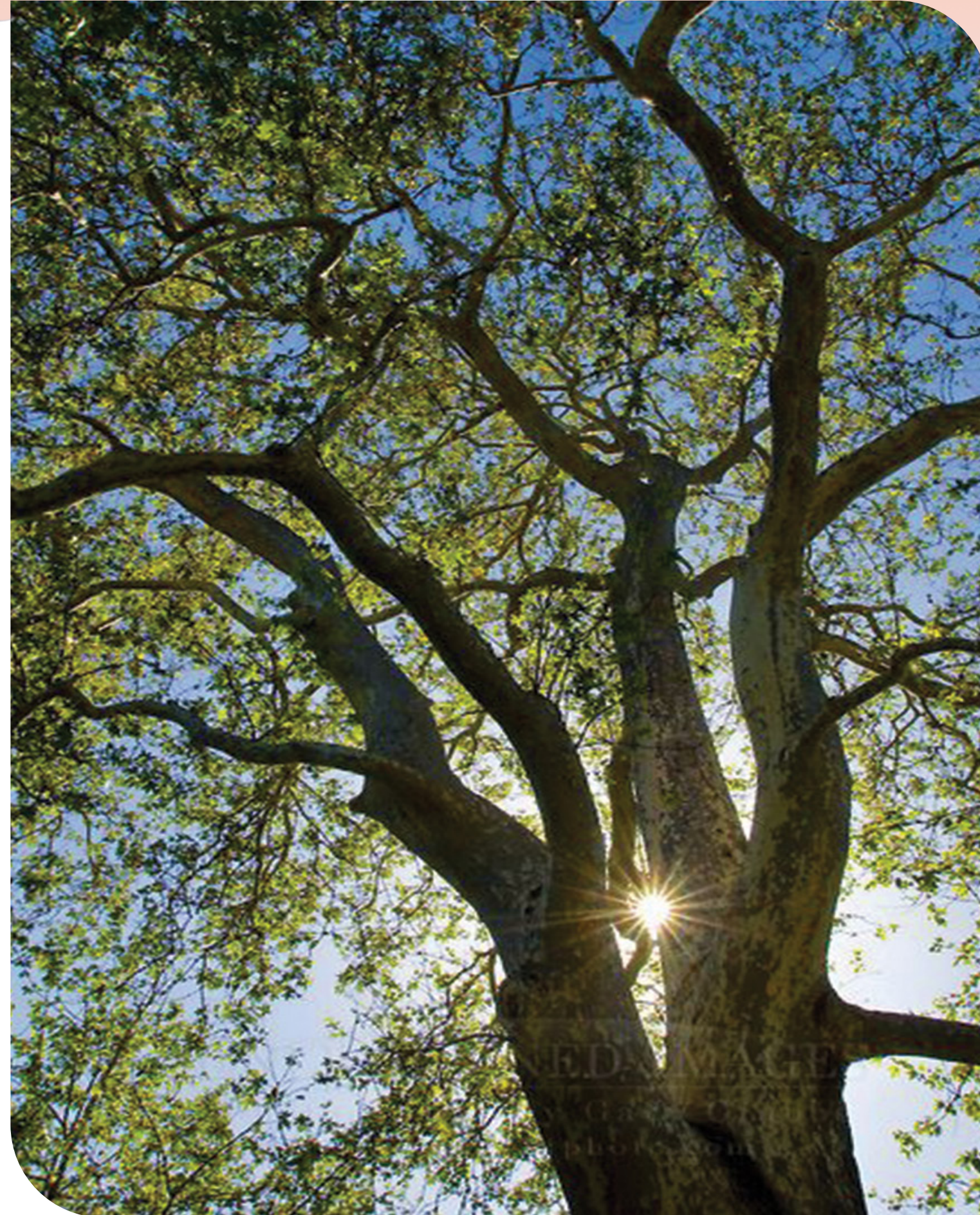


TONGVAPARK

Marie Darnell - Design Graphics III - Spring 2024 - Razo

TABLE OF CONTENTS

ABOUT ME.....	4
BACKGROUND.....	5
SITE HISTORY.....	6
QUADRANT 2E.....	7
SITE ANALYSIS.....	8-9
ILLUSTRATIVE.....	10
ENLARGEMENT.....	11
SECTIONS.....	12
PERSPECTIVES.....	13
SITE ELEMENTS.....	14
SITE PLANTS.....	15
ACKNOWLEDGMENTS.....	16



ABOUT ME



Hello! My name is Marie Darnell, and I am excited to share my journey towards pursuing a degree in Landscape Architecture. Growing up in the vibrant and green surroundings of the Washington, DC area, I developed a deep love for plants and the outdoors. This passion for nature has always been a significant part of my life, and it continually inspires me.

My academic journey initially led me to study Business Management and Marketing in college. This educational foundation provided me with valuable skills and knowledge, which I later applied in my professional career. I began working in property management and eventually transitioned into commercial real estate. While these roles were rewarding in many ways, I never felt a true passion for real estate. I found myself yearning for a career that was not only fulfilling but also allowed me to express my creativity.

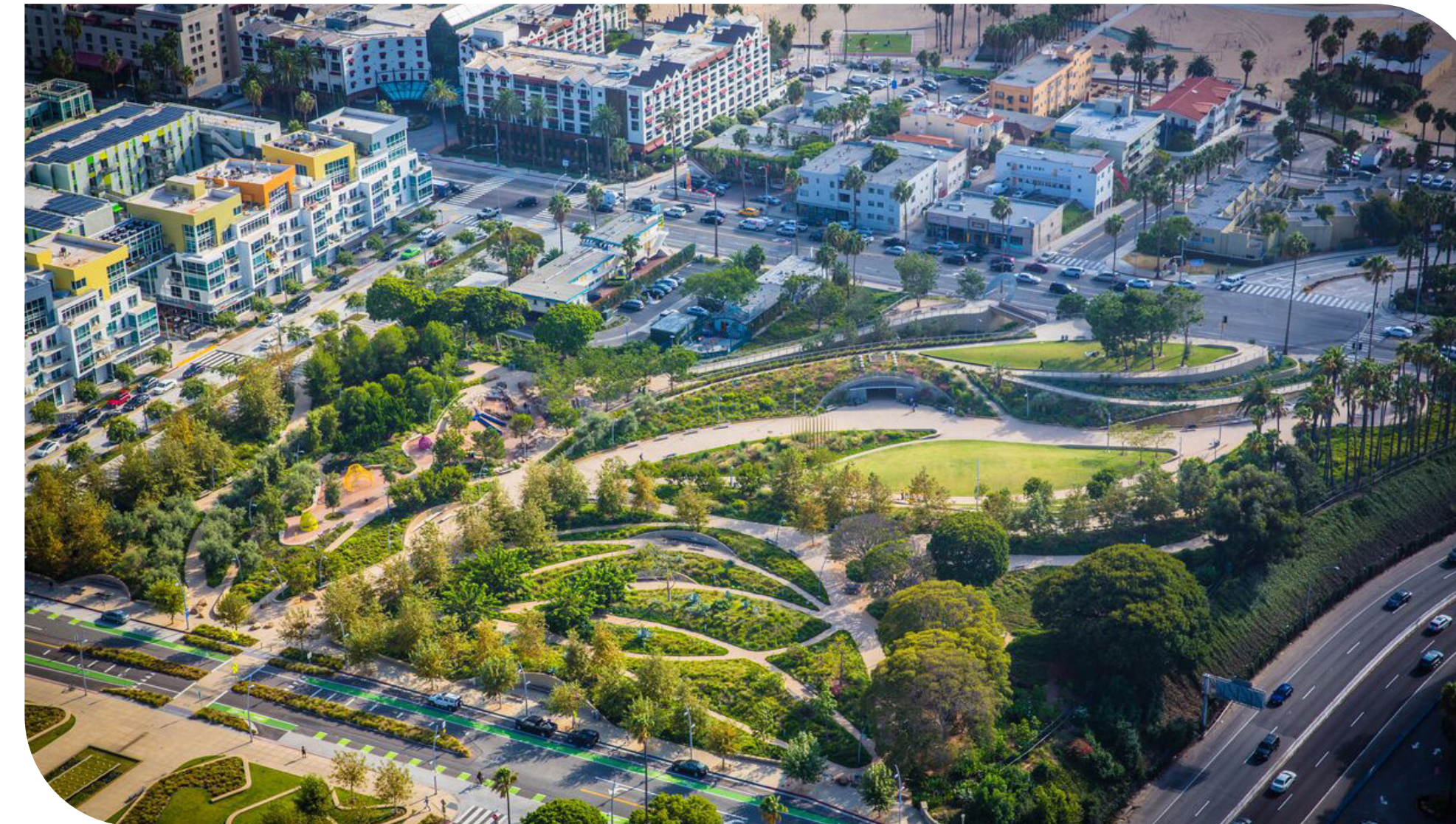
A turning point came when I had a conversation with a close friend who is a landscape architect. Listening to them talk about their work and the impact they had on transforming spaces into beautiful, functional environments resonated deeply with me. It was in that moment I knew that landscape architecture was the path I wanted to pursue.

Over the past year, I have dedicated myself to learning and growing in this field. The courses I have taken have been both challenging and incredibly rewarding. Each new concept and skill I acquire only strengthens my commitment and excitement for this career. I am proud of the progress I have made and am eager to continue this journey.

As I embark on this new chapter, I am filled with enthusiasm and determination. I look forward to the opportunities ahead and the chance to create spaces that harmonize with nature, bringing joy and functionality to those who experience them. Landscape architecture is more than a career change for me; it is a calling that aligns perfectly with my passions and aspirations. I am thrilled to see where this road leads and to make a meaningful impact through my work.

BACKGROUND

UCLA Extension



Tongva Park served as a case study site for the Design Graphic series (DG1, DG2, DG3) in the first year of the UCLA Extension Landscape Architecture Program. As a class, we went from a microscopic focus, looking at one quadrant of the park in DG1, to a macroscopic step back, looking at the whole park and its context in DG2. We also practiced with different mediums, starting with the rudimentary pencil and vellum (DG1) to pen and trace (DG2), then incorporating digital tools from the Adobe Suite, specifically Photoshop and InDesign, to enhance our original drawings. This booklet is a compilation of our year exploring the park through various exercises that encouraged us to enhance our awareness and understanding of the park's development.

SITE HISTORY



"Gabrielino-Tongva villages were located in the Los Angeles Basin for thousands of years. These villages were located near and around the ever changing Los Angeles River, San Gabriel River, Santa Ana River and the coastal areas. It was a time when there was a perfect balance of the ecosystem where fish and game were plentiful and the river ran free with fresh water from the mountains."

-tongvapeople.org



The site sits on Gabrielino-Tongva land which is where the name "Tongva Park" came from.

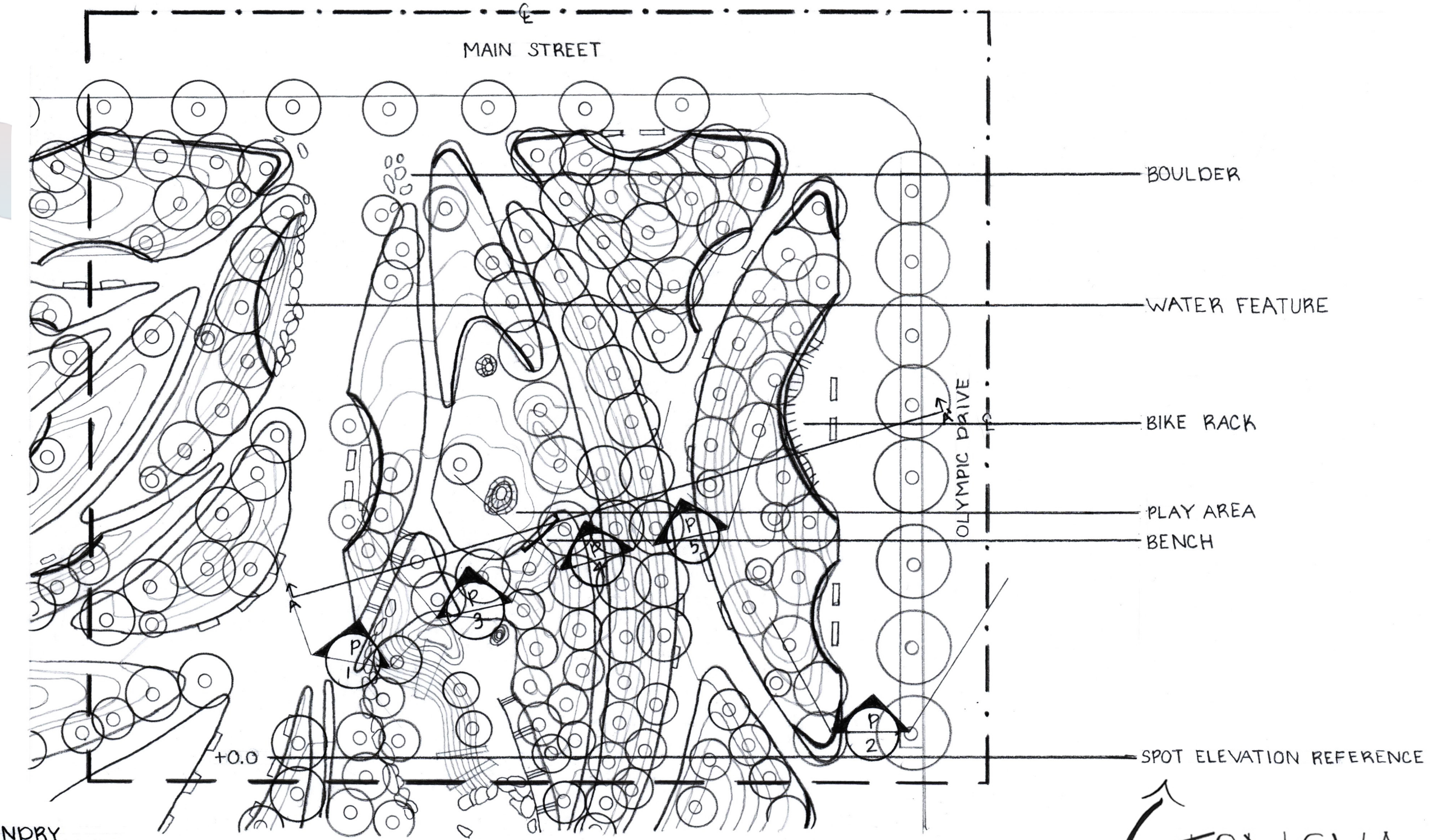
The site then served as a parking lot for city employees until the city decided to redevelop the area into a space for the public. James Corner Field Operations (JCFO). JCFO incorporated several beloved trees that were already on the site into an arroyo-inspired plan that orients visitors toward spectacular views of the Pacific Ocean and a beach that stretches out casually, with an air of West Coast chill, just across the street



QUADRANT 2E

DG1 - 2E
In DG1 we were assigned a quadrant of the park to explore in depth. I was assigned 2E which includes a water feature, the playground and many benches and pathways. We also learned how to create graphics all in pencil with different pencil weights as well as line thickness.

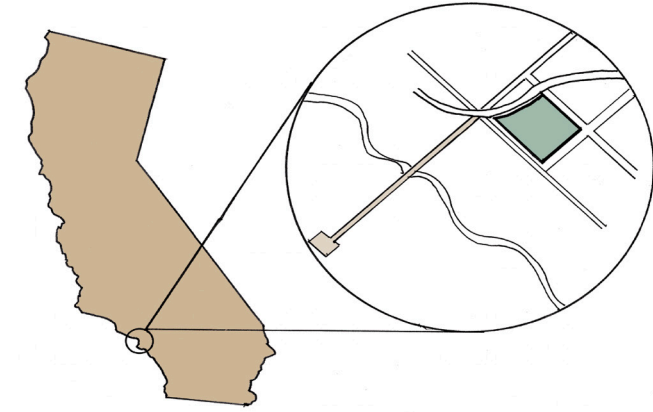
At the beginning of the quarter I had no idea how I would be able to create this but thanks to Davids encouragement, tedious homework assignments and many practice hours I was able to create this graphic.



- · — STUDY BOUNDRY
- — MATCH LINE
- PEDESTRIAN CIRCULATION
- VEHICULAR CIRCULATION
- BUILDING
- RETAINING WALL
- FENCE
- TREE
- PALM TREE
- CONTOUR
- ⊗ NTS

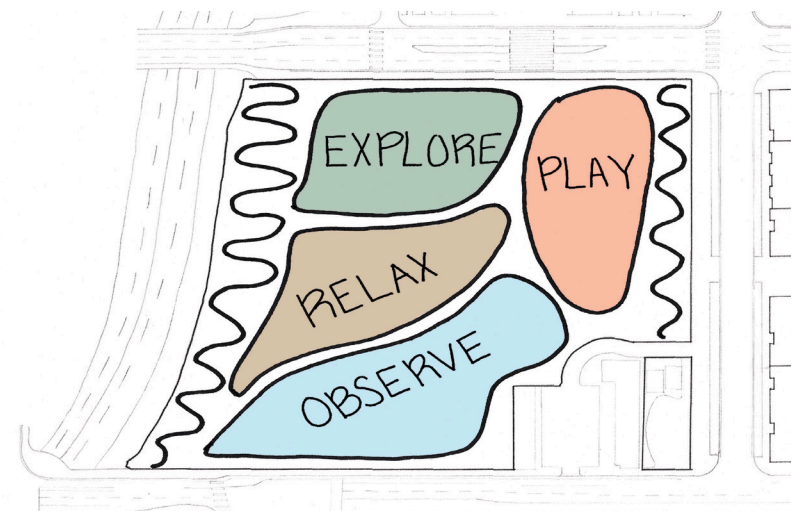
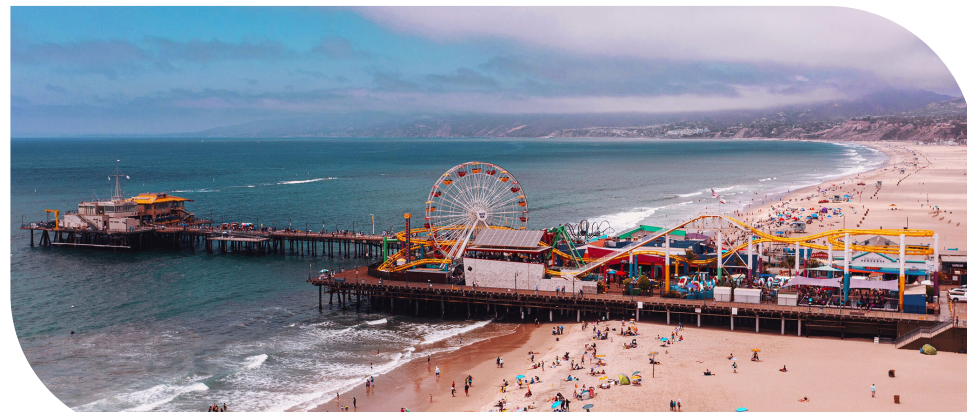
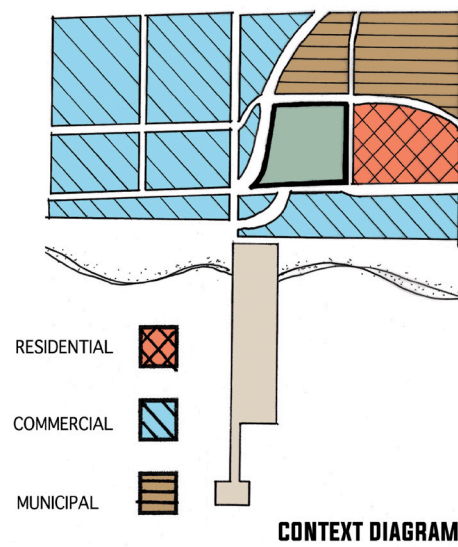
TONGVA PARK

SITE ANALYSIS

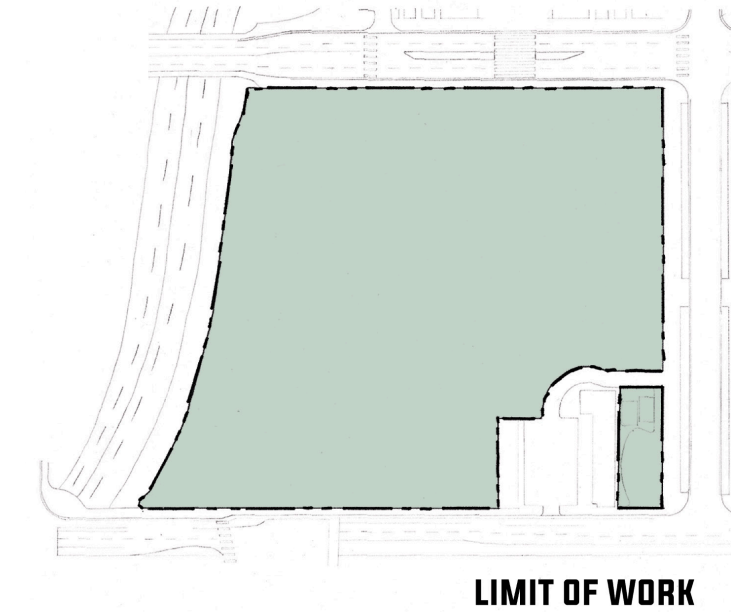


Connecting Santa Monica City Hall with the Santa Monica Pier...
 “Tongva Park is a beautiful, modern urban park within walking distance of the iconic Santa Monica Pier. Stretching over six acres, the park has unique structures, art sculptures, diverse and sustainable plants and trees, play structures and plenty of amenities for everyone to enjoy. There are walking paths throughout the park allowing visitors to easily explore the four sections of the park.”

-santamonica.gov



SITE ANALYSIS



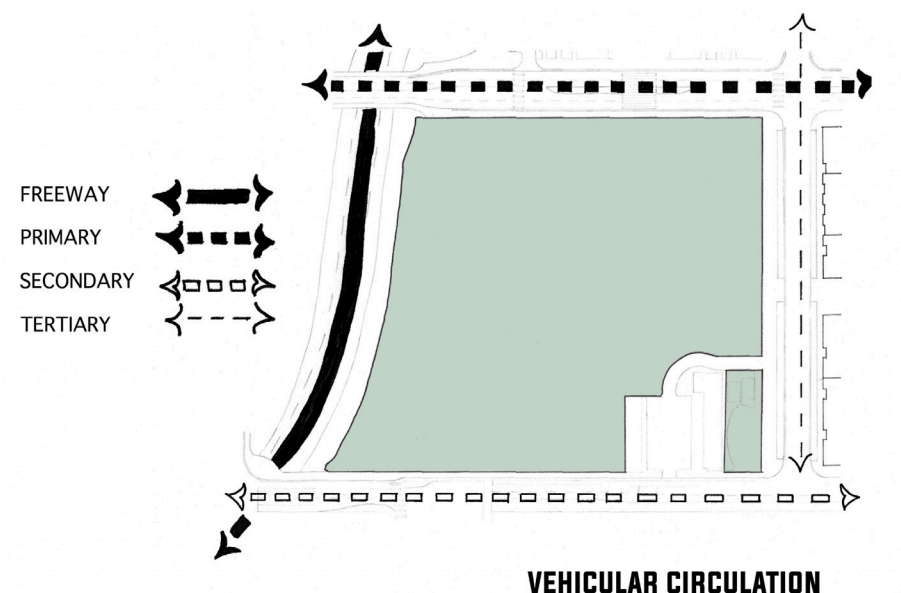
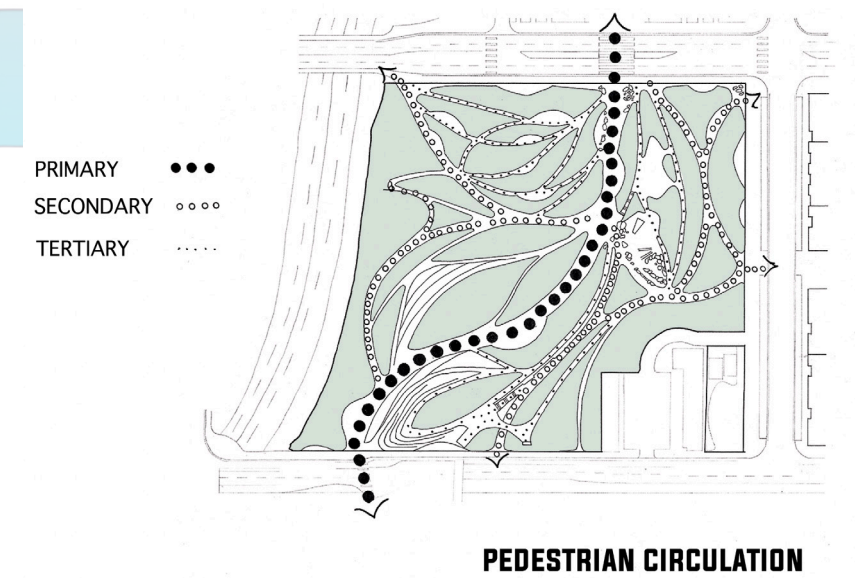
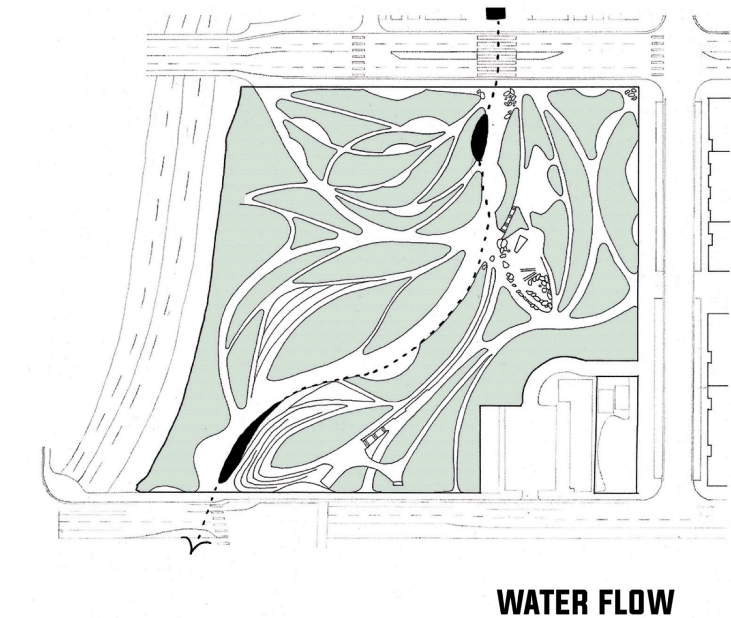
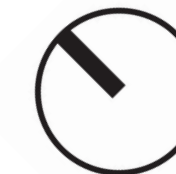
LIMIT OF WORK - NTS
 Directly outside of Santa Monica City Hall Bordered by four main roads connecting City Hall to the Beach.

WATER FLOW - NTS
 Water flows from East to West curving throughout the park from fountain to fountain.

PEDESTRIAN - NTS
 The park features a network of walking paths and trails that lead visitors through its landscaped gardens and amenities.

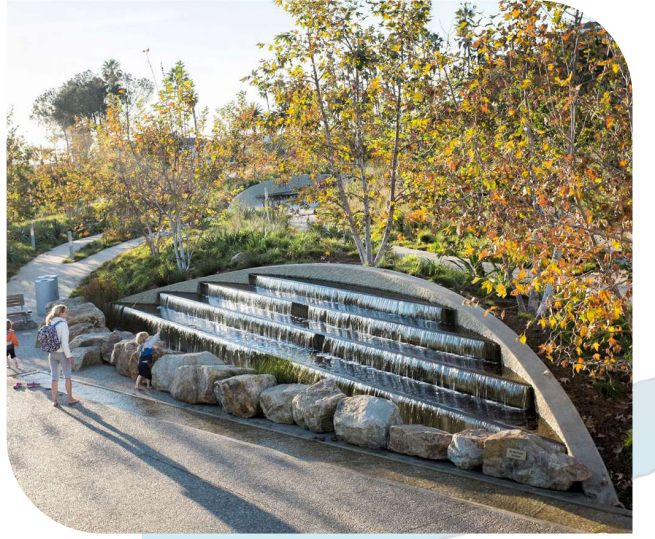
VEHICULAR - NTS
 North is the I-10 Freeway
 South is Olympic Avenue
 East is Main Street
 West is Ocean Avenue

NTS



ILLUSTRATIVE PLAN

ENLARGEMENT



WATER FEATURE

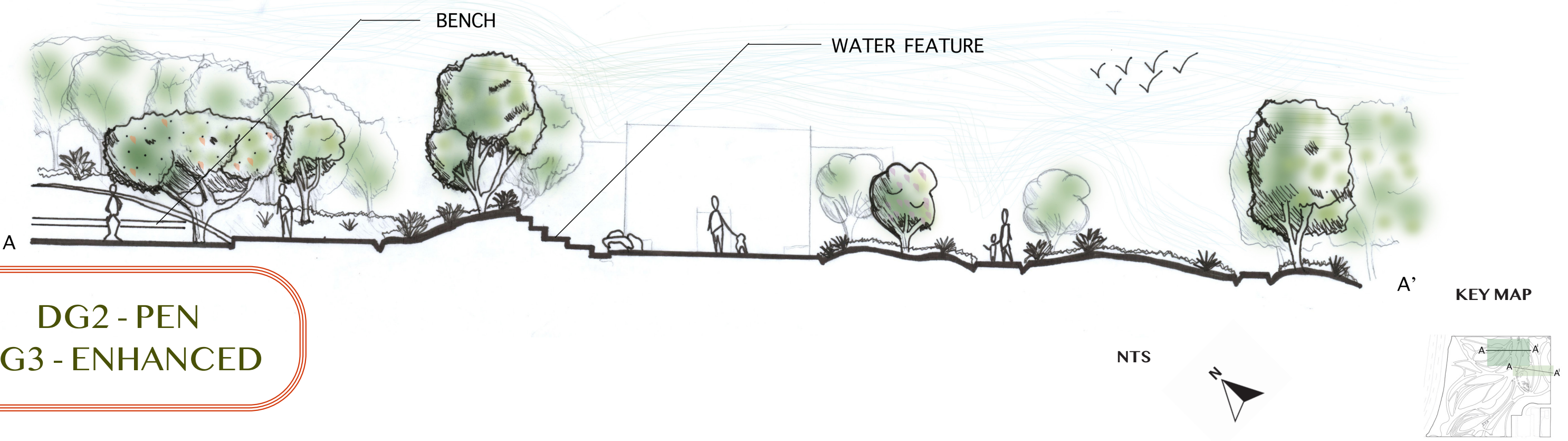
PLAY AREA

SECTIONS

DG1 - PENCIL
DG3 - ENHANCED



DG2 - PEN
DG3 - ENHANCED



PERSPECTIVES

Sketching was new to me. I do not have an art background and have never been able to draw more than a stick figure but with all of the practice from DG1 & DG2 I am proud of where my sketches are today. DG3 taught me how to color those sketches with Photoshop which help bring them to life.

DG1 - PENCIL
DG3 - ENHANCED



DG2 - PEN
DG3 - ENHANCED



DG2 - PEN
DG3 - ENHANCED



SITE ELEMENTS

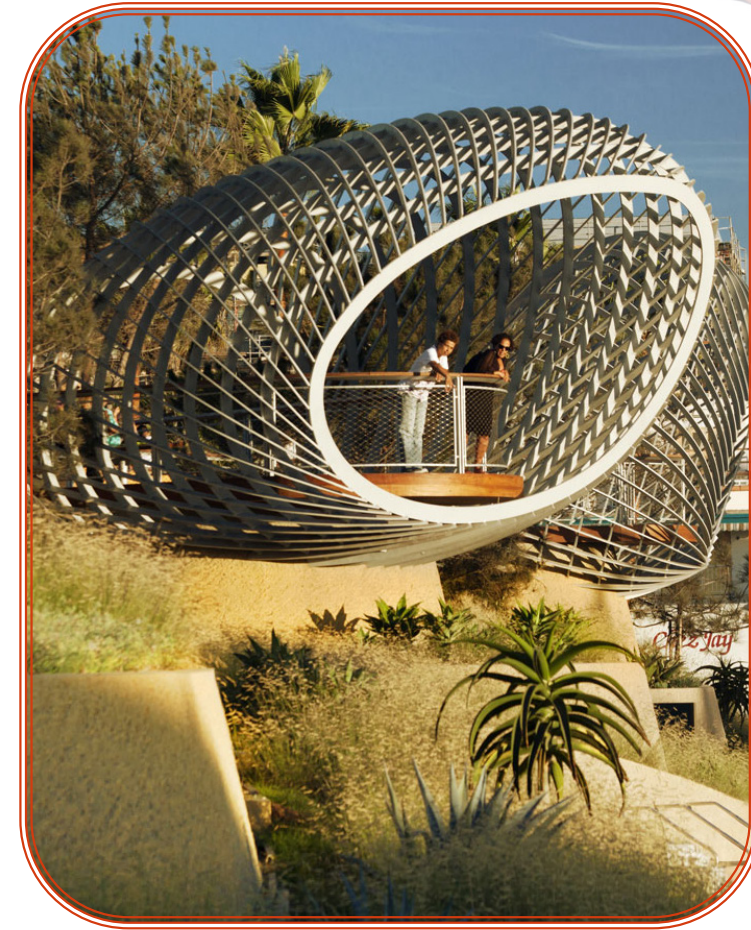
PLAY



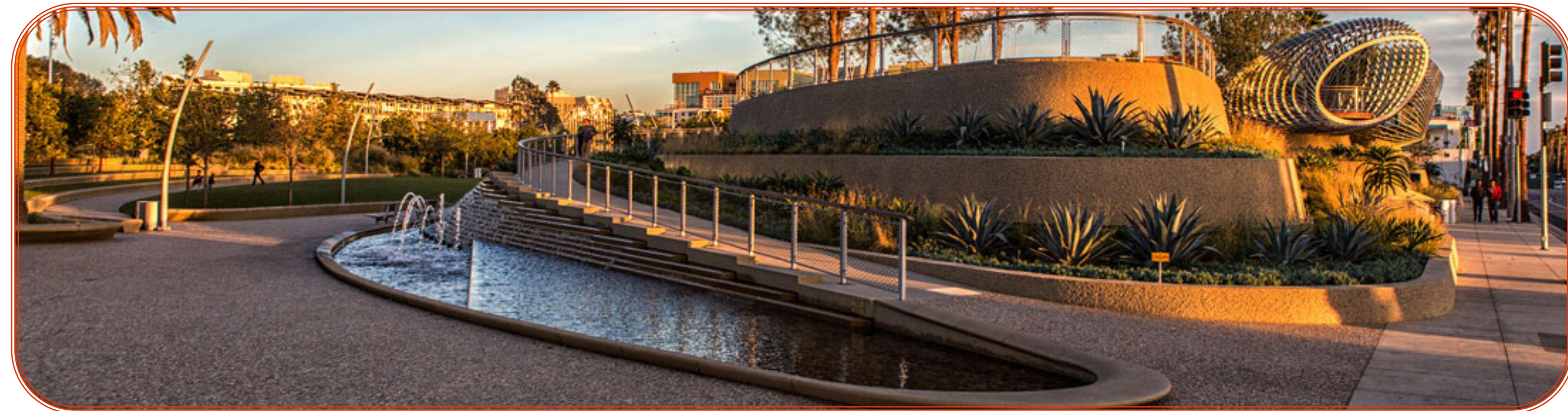
ART



VIEW



RELAX



PLANT ELEMENTS



Aloe speciosa - Tilt Head Aloe



Zephyranthes drummondii - Evening Rain Lily



Cycas revoluta - Sago Palm



Alstroemeria - Lily of the Incas



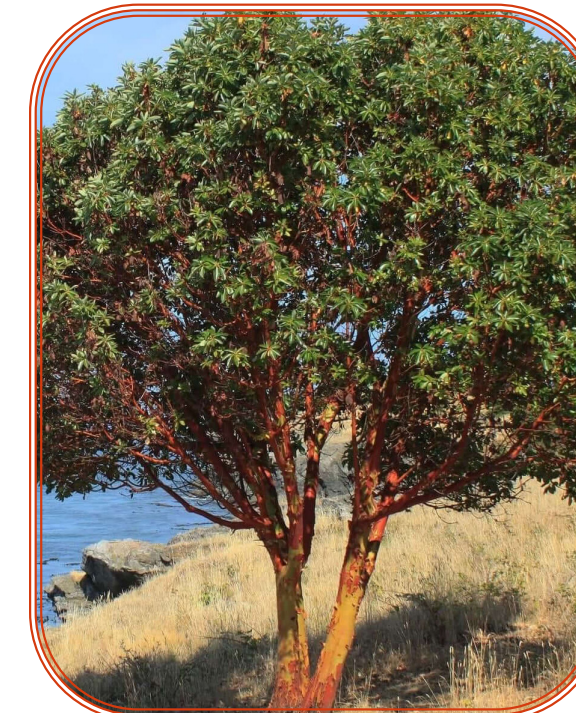
Erythrina coraloides - Naked Coral Tree



Parkinsonia aculeata - Desert Museum



Tabebuia impetiginosa - Pink Trumpet Tree



Arbutus marina - Strawberry Tree

ACKNOWLEDGEMENTS

I want to take a moment to express my gratitude to those who have supported and encouraged me throughout this journey.

To my parents, your unwavering belief in me and constant support have been my bedrock. Your encouragement has given me the strength to pursue my dreams, and for that, I am eternally grateful.

To my partner, Evan, your love and patience have been my anchor. Thank you for standing by my side, cheering me on, and being my biggest supporter. Your faith in me has been a source of inspiration and motivation.

To my professors, your guidance and knowledge have been invaluable. You have not only imparted wisdom but also instilled in me a passion for learning and growth. I am deeply appreciative of your dedication and commitment to my education.

To all of my classmates, thank you for the camaraderie, collaboration, and shared experiences. Together, we have navigated challenges, celebrated successes, and created lasting memories. Your friendship and support have made this journey all the more enriching and enjoyable.

& CITATIONS

1. Tongva Park. Home Page. (n.d.). <https://www.santamonica.gov/places/parks/tongva-park>
2. urbanNext (June 4, 2024) Tongva Park and Ken Genser Square. Retrieved from <https://urbannext.net/tongva-park-and-ken-genser-square/>.
3. History. Gabrielino. (n.d.). <https://gabrielinotribe.org/history/>
4. Organic Aloe Vera, aloe, Aloe barbadensis, Cactus, succulent, live plant, Red Flower. Etsy. (n.d.). <https://www.etsy.com/listing/820115525/organic-aloe-vera-aloe-aloe-barbadensis>
5. Staff. (2015, July 13). Tongva Park: Finalist for prestigious award. Canyon News. <https://www.canyon-news.com/tongva-park-chosen-as-finalist-for-prestigious-award/32979>
6. Morley, J. B. (2019, November 8). Tongva Park in Santa Monica is Californian through-and-through. The Architect's Newspaper. <https://www.archpaper.com/2019/11/tongva-park-feature/>
7. Tongva Park and Ken Genser Square: 2018 ASLA professional awards. Tongva Park and Ken Genser Square | 2018 ASLA Professional Awards. (n.d.). https://www.asla.org/2018awards/455654-Tongva_Park_And_Ken_Genser.html
8. Aloe arborescens (Torch Aloe). Gardenia. (n.d.). <https://www.gardenia.net/plant/aloe-arborescens-torch-aloe>
9. Zephyranthes drummondii (evening Rain Lily). Gardenia. (n.d.-b). <https://www.gardenia.net/plant/zephyranthes-drummondii>
10. Cycas revoluta. Nurseries Caroliniana. (n.d.). <https://nurcar.com/products/cycas-revoluta>
11. Melissa PinoMelissa Pino is a biologist. (2024, March 8). How to plant, grow and care for Alstroemeria (Peruvian lily). Planet Natural. <https://www.planetnatural.com/alstroemeria/>
12. Pink trumpet tree. Waterwise Garden Planner. (2022b, September 6). <https://waterwisegardenplanner.org/plants/tabebuia-impetiginosa/>
13. Desert Museum palo verde. Waterwise Garden Planner. (2022a, September 6). <https://waterwisegardenplanner.org/plants/parkinsonia-x-desert-museum/>
14. Arbutus “Marina” (multi) - marina Strawberry Tree. Plants Express. (n.d.). <https://plantsexpress.com/products/marina-strawberry-tree-multi>