

THOUSAND OAKS

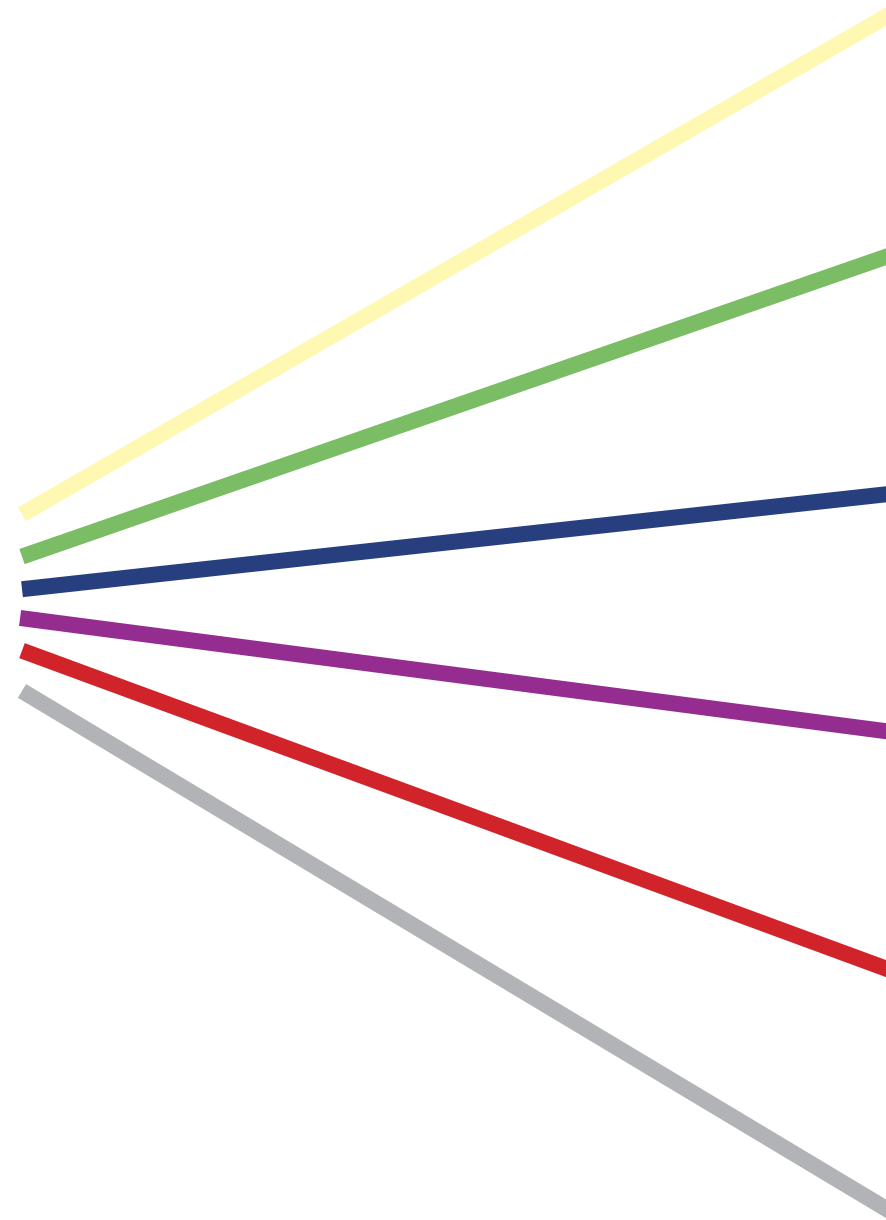
CIVIC ARTS PLAZA REDESIGN

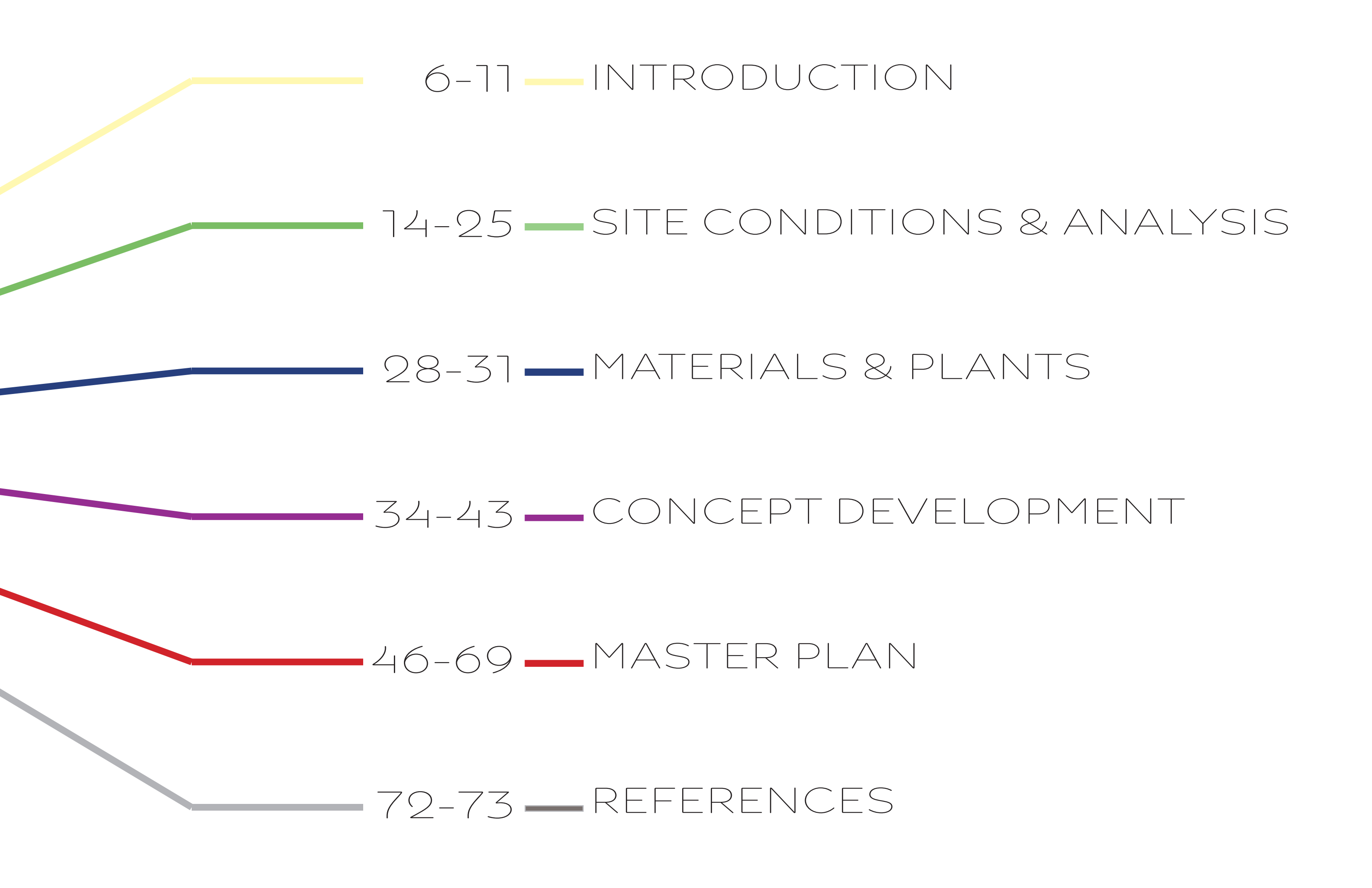
LEELOO GILET

LANDSCAPE DESIGN 3 | SPRING 2023 | BEHR



TABLE OF CONTENTS





6-11 INTRODUCTION

14-25 SITE CONDITIONS & ANALYSIS

28-31 MATERIALS & PLANTS

34-43 CONCEPT DEVELOPMENT

46-69 MASTER PLAN

72-73 REFERENCES



INTRODUCTION

PROJECT OVERVIEW

THE CITY OF THOUSAND OAKS, CA IS CURRENTLY UNDERGOING A REDEVELOPMENT PROCESS FOR ITS DOWNTOWN CORE, AIMING TO CREATE A VIBRANT AND DISTINCTIVE SPACE THAT SERVES AS A CULTURAL HUB FOR BOTH THE LOCAL COMMUNITY AND THE BROADER CONEJO VALLEY. WITHIN THE MASTER PLAN, SEVERAL EXISTING SITES HAVE BEEN IDENTIFIED TO CONTRIBUTE TO THIS LARGER VISION, WITH THE CIVIC ARTS PLAZA STANDING OUT AS A KEY ELEMENT. STRATEGICALLY LOCATED IN THE HEART OF THOUSAND OAKS, THE CIVIC ARTS PLAZA HAS THE POTENTIAL TO FOSTER GREATER PUBLIC ENGAGEMENT AND CONNECT THE SURROUNDING SITES INTO ONE UNIFIED DOWNTOWN.



THE GOAL IS TO ENVISION AND CREATE A NEW, MORE DYNAMIC, AND EASILY IDENTIFIABLE DOWNTOWN FOR THOUSAND OAKS, WITH THE CIVIC CENTER SERVING AS ITS CENTRAL FOCAL POINT.

LOCATION

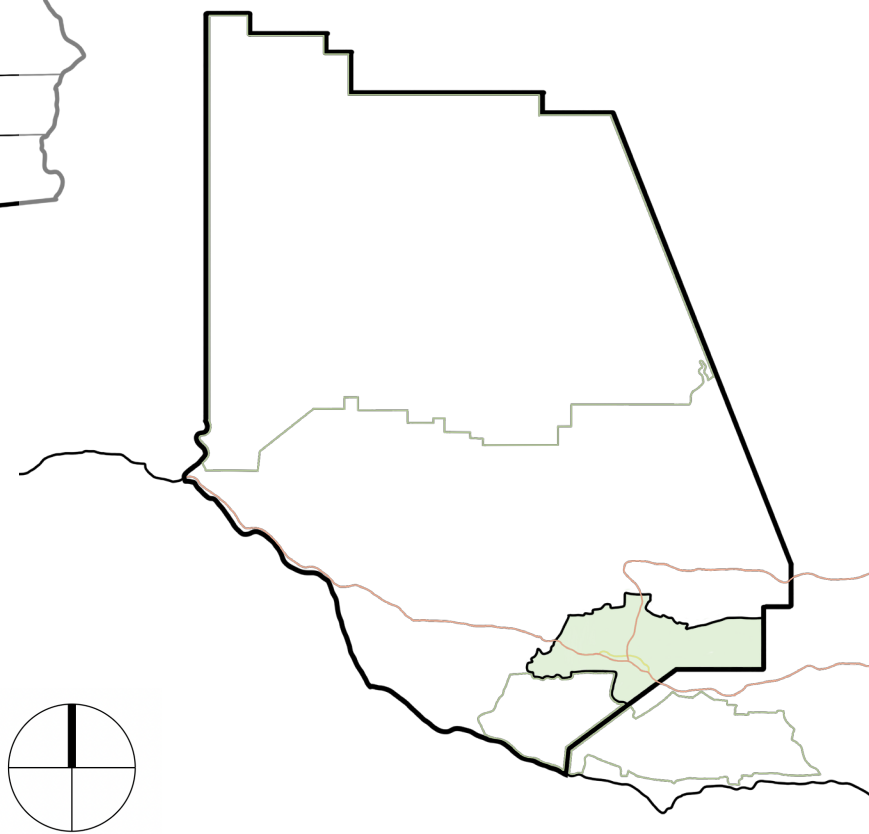
STATE OF CALIFORNIA



AT 2100 THOUSAND OAKS BOULEVARD

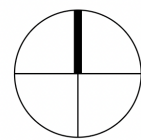
THE SITE ENCOMPASSES THE CIVIC ARTS PLAZA, THE CITY HALL, OTHER ADMINISTRATIVE BUILDINGS, AND A LARGE OUTDOOR PARK.

VENTURA COUNTY

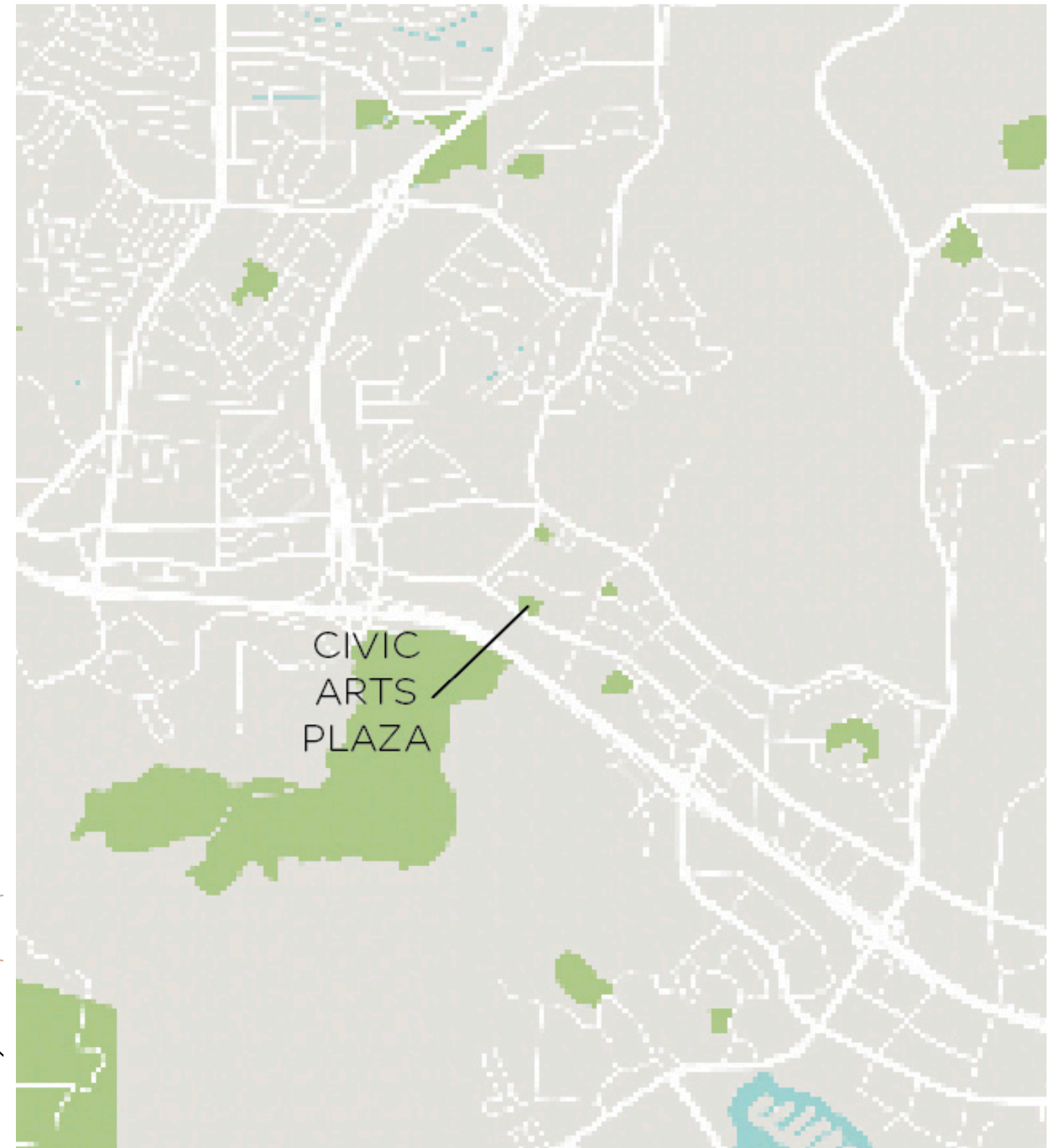


THE LOCATION OF THE THOUSAND OAKS CIVIC ARTS PLAZA PROVIDES CONVENIENT ACCESS TO RESIDENTS AND VISITORS OF THOUSAND OAKS AND SURROUNDING COMMUNITIES.

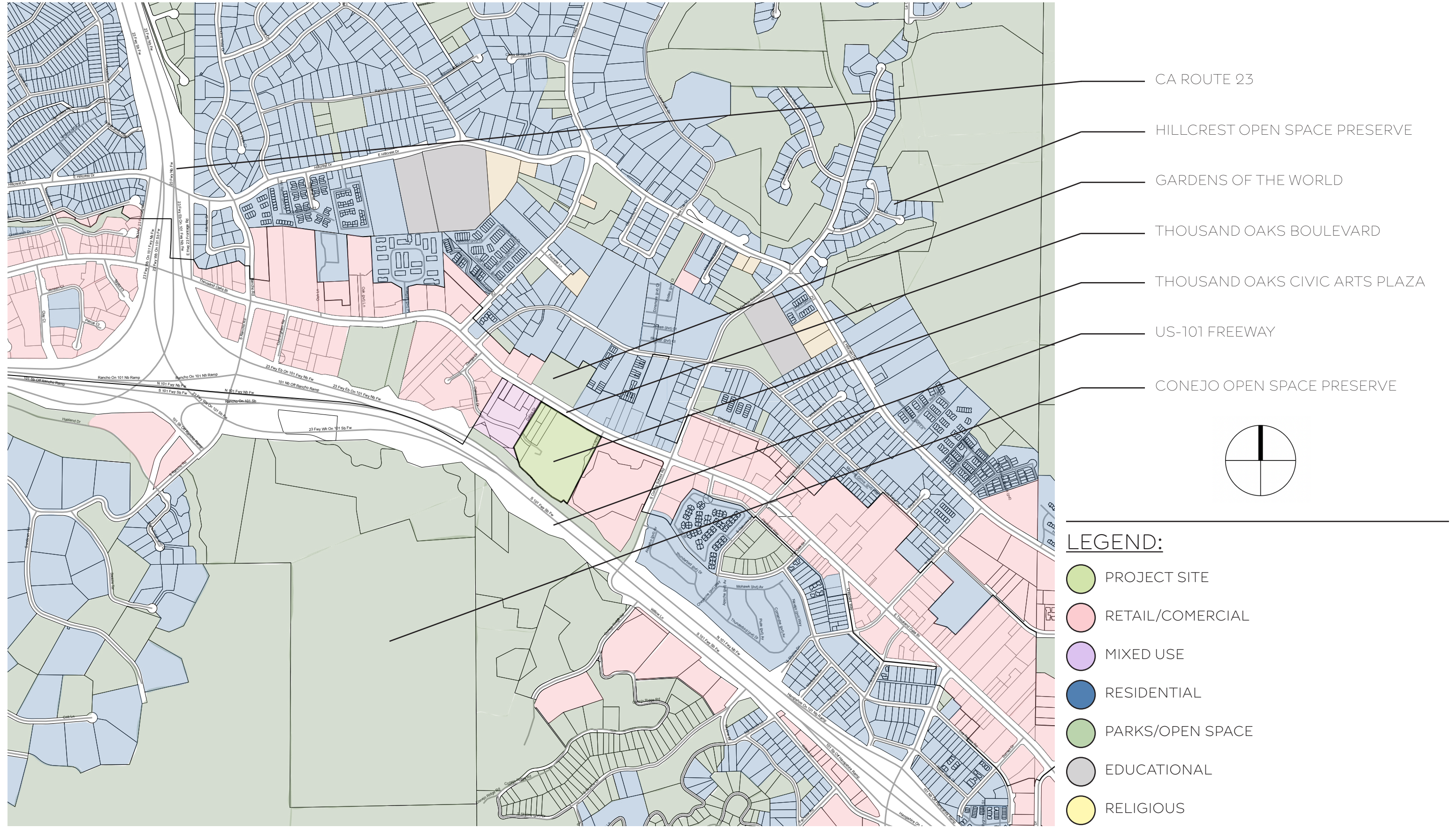
- NEAR SEVERAL MAJOR HIGHWAYS AND ROADS
- ON-SITE PARKING
- PUBLIC TRANSIT HUBS ACCESS



CITY OF THOUSAND OAKS, CA



CONTEXT



SITE ZONES



ZONE 1: OFF DALLAS DR.

- PARKING LOTS (E)
- LOADING ZONE (F)
- DROP-OFF ZONE (G)
- EXISTING MAIN ENTRANCE TO CITY HALL
- SUNKEN GARDEN AREA

ZONE 2: OFF THOUSAND OAKS BLVD.

- LARGE, LEVEL LAWN
- EXISTING SHADE STRUCTURE
- PROPOSED NEW ENTRANCE

ZONE 3: OFF LAKES DR.

- PICNIC AREA
- OAK & PINE GROVES
- WALKWAY TO SIDE ENTRANCE

ZONE 4: ALONG THOUSAND OAKS BLVD., AT INTERSECTIONS WITH DALLAS DR. & LAKES DR.



BUILDING LEGEND:

- (A) CITY HALL
- (B) THEATER & PERFORMANCE HALL
- (C) REFLECTING POOL
- (D) LIGHT WELL
- (E) PARKING LOT
- (F) LOADING ZONE
- (G) DROP-OFF ZONE

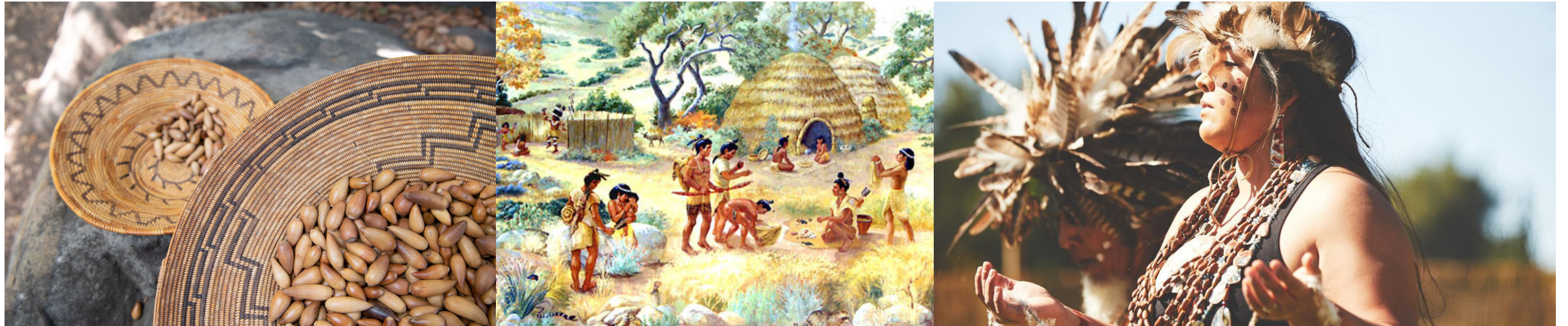
HISTORY

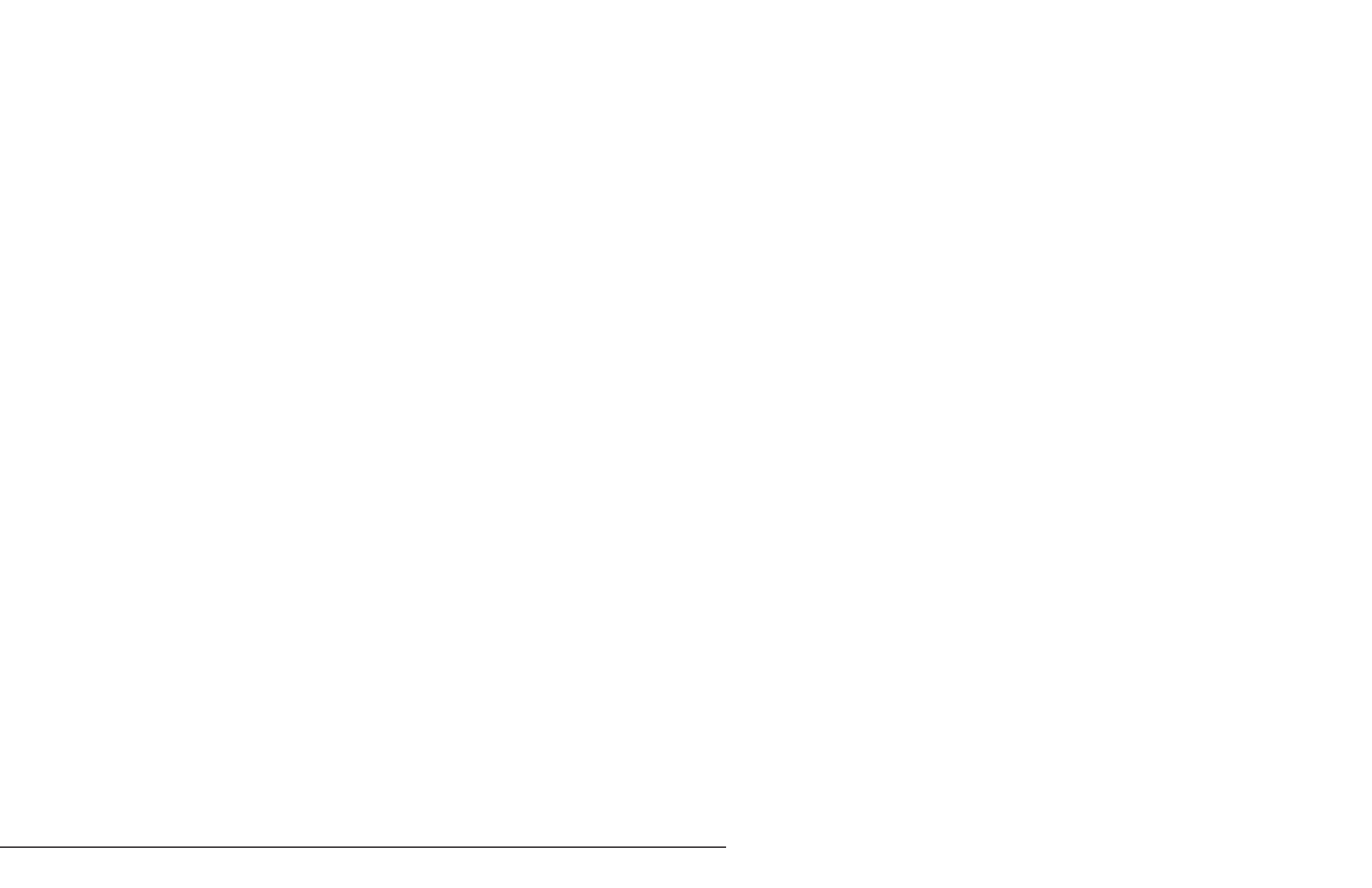
THE SITE OF THE THOUSAND OAKS CIVIC ARTS PLAZA HOLDS A RICH HISTORY THAT ENCOMPASSES THE DEVELOPMENT OF THE CITY AND THE ESTABLISHMENT OF A VIBRANT CULTURAL CENTER. THE STORY OF THE CIVIC ARTS PLAZA BEGINS WITH THE GROWTH AND PLANNING OF THOUSAND OAKS ITSELF.

THOUSAND OAKS WAS ORIGINALLY INHABITED BY THE CHUMASH NATIVE AMERICAN PEOPLE FOR NEARLY TEN THOUSAND YEARS BEFORE EUROPEAN SETTLERS ARRIVED. THE THOUSAND OAKS CIVIC ARTS PLAZA, IN PARTICULAR, IS LOCATED ON A PRE-COLONIAL CHUMASH SUMMER ENCAMPMENT KNOWN AS IPUC. NEARBY, THERE WERE TWO MAJOR VILLAGES: SAP'WI ("HOUSE OF THE DEER"), NOW THE CHUMASH INTERPRETIVE CENTER IN OAKBROOK REGIONAL PARK, AND SATWIWA ("THE BLUFFS"), NOW THE NATIVE AMERICAN INDIAN CULTURE CENTER AT THE FOOTHILLS OF MOUNT BONEY IN NEWBURY PARK. PRIOR TO COLONIZATION, THE CHUMASH PEOPLE LIVED IN HARMONY WITH THE NATURAL ENVIRONMENT, UTILIZING THE ABUNDANT RESOURCES PROVIDED BY THE LAND AND SEA. THEY WERE SKILLED HUNTERS, GATHERERS, AND FISHERMEN, RELYING ON THE COASTAL AND INLAND RESOURCES FOR SUSTENANCE. THE THOUSAND OAKS AREA, WITH ITS PROXIMITY TO THE PACIFIC OCEAN, RIVERS, AND MOUNTAINS, PROVIDED A DIVERSE RANGE OF HABITATS FOR THE CHUMASH TO THRIVE.

THE CHUMASH POSSESSED A RICH CULTURAL AND SPIRITUAL TRADITION. THEY HAD A COMPLEX SOCIAL STRUCTURE, ORGANIZED INTO TRIBES AND VILLAGES, AND WERE KNOWN FOR THEIR SKILLED ARTISANS AND CRAFTSMEN. THEIR ARTISTRY IS EVIDENT IN THE INTRICATE BASKETRY, POTTERY, AND ROCK ART THAT HAS SURVIVED TO THIS DAY. THE CHUMASH ALSO HAD A DEEP CONNECTION TO THE LAND AND PRACTICED VARIOUS CEREMONIES AND RITUALS TO HONOR THEIR ANCESTORS AND MAINTAIN HARMONY WITH NATURE.

TODAY, THE CHUMASH HERITAGE IS CELEBRATED AND PRESERVED IN THOUSAND OAKS AND THE SURROUNDING AREAS. EFFORTS HAVE BEEN MADE TO ACKNOWLEDGE AND RECOGNIZE THE CHUMASH PEOPLE'S CONTRIBUTIONS TO THE REGION'S HISTORY AND CULTURE. THE THOUSAND OAKS CIVIC ARTS PLAZA IS A VALUABLE RESOURCE FOR LEARNING ABOUT THE CHUMASH HERITAGE THROUGH EXHIBITS, ARTIFACTS, AND EDUCATIONAL PROGRAMS. CURRENTLY, THE ARTS PLAZA FEATURES CHUMASH PICTOGRAPHS ON THE EAST FACADE OF THE PERFORMANCE HALL. HOWEVER, MORE COULD BE DONE TO HIGHLIGHT THE LOCALE'S RICH INDIGINOUS HISTORY.





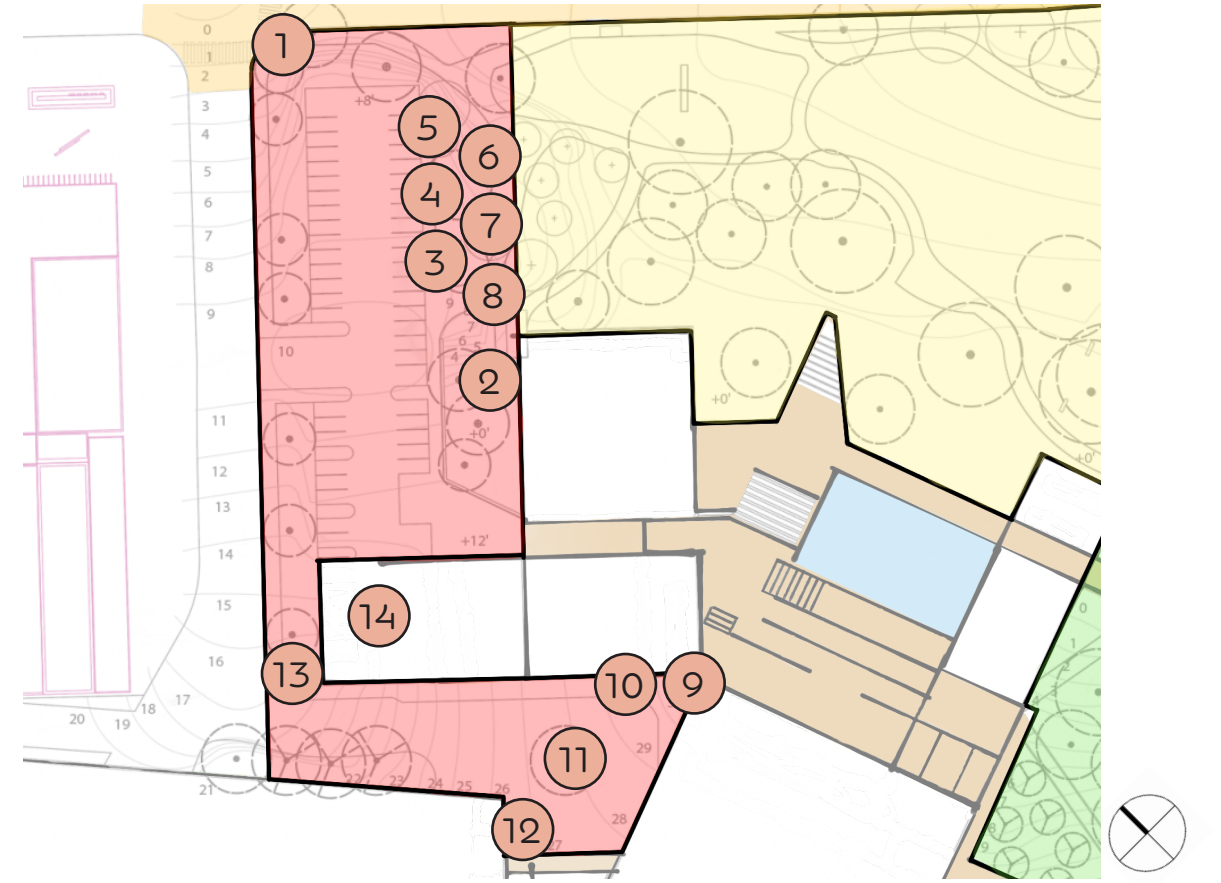


SITE CONDITIONS & ANALYSIS

ZONE 1 CONDITIONS



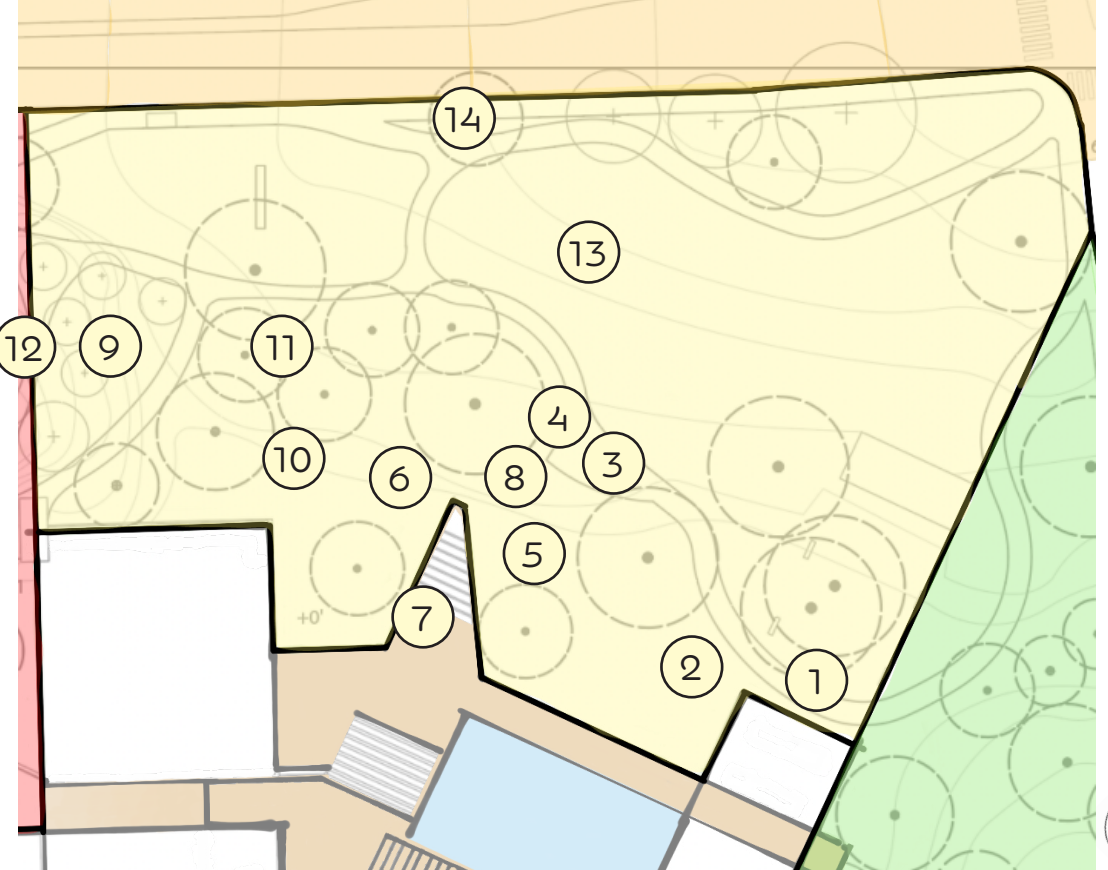
- ① VIEW FROM THOUSAND OAKS BLVD. INTERSECTION WITH DALLAS DR.
- ② SUNKEN GARDEN
- ③ LANDSCAPING
- ④ WALKWAY
- ⑤ GRADE CHANGE TO PARKING LOT
- ⑥ VIEW OF THOUSAND OAKS BLVD. FROM PATH
- ⑦ PICNIC AREA
- ⑧ VIEW OF PARKING LOT FROM PATH
- ⑨ ENTERANCE TO THEATER
- ⑩ THEATER ENTRANCE OVERHANG
- ⑪ DROP-OFF ZONE
- ⑫ DROP OFF ZONE TO PARKING LOT
- ⑬ PLANTED AREA
- ⑭ LOADING ZONE



ZONE 2 CONDITIONS



- ① LIVING TIME CAPSULE
- ② BIOSWALE
- ③ PATIO
- ④ PATIO/PICNIC TABLE
- ⑤ STEPPED PLANTERS
- ⑥ BIOSWALE/POTENTIAL NEW ENTRY
- ⑦ STEPPED PLANTERS (FROM ABOVE)
- ⑧ PICNIC AREA
- ⑨ GRADE CHANGE TO ZONE 1
- ⑩ BIOSWALE
- ⑪ OAK GROVE
- ⑫ VIEW FROM ZONE 1
- ⑬ LAWN
- ⑭ MAIN SIGNAGE



ZONE 3 CONDITIONS



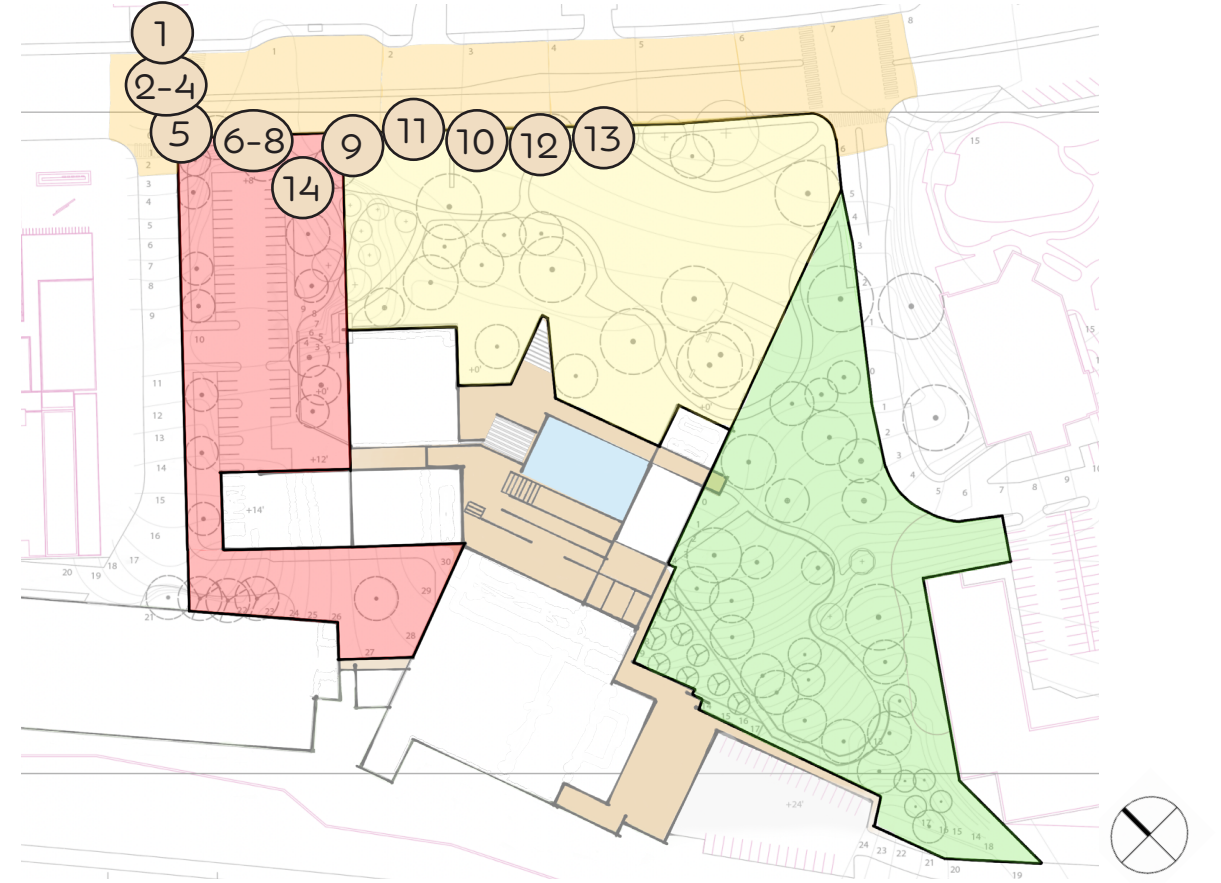
- ① SHADE STRUCTURE/TIME CAPSULE
- ② SHADE SCULPTURE/GROVE
- ③ SHADE STRUCTURE/BIOSWALE
- ④ SHADE STRUCTURE/THE LAKES
- ⑤ SHADE STRUCTURE
- ⑥ BIOSWALE
- ⑦ OAK/SYCAMORE GROVE
- ⑧ VIEW FROM SECOND FLOOR
- ⑨ PICNIC AREA
- ⑩ VIEW OF THE LAKES
- ⑪ SHADE STRUCTRE AND LAWN
- ⑫ VIEW FROM THE LAKES
- ⑬ VIEW OF THE LAKES
- ⑭ VIEW OF THE LAKES



ZONE 4 CONDITIONS



- ① T.O.B. (NORTH SIDE) AT INTERSECTION WITH DALLAS DR.
- ② VIEW OF SITE FROM T.O.B. AT INTERSECTION WITH DALLAS DR.
- ③ T.O.B. MEDIAN
- ④ VIEW OF SITE FROM XWALK
- ⑤ VIEW OF G.O.T.W. FROM XWALK
- ⑥ VIEW OF PARKING LOT FROM ENTRY
- ⑦ STREETSIDE PLANTING
- ⑧ THOUSAND OAKS BLVD
- ⑨ THOUSAND OAKS BLVD
- ⑩ THOUSAND OAKS BLVD
- ⑪ PUBLIC TRANSIT HUB
- ⑫ WAYFINDING SIGNAGE
- ⑬ THOUSAND OAKS BLVD
- ⑭ PATH TO INTERSECTION W/ DALLAS



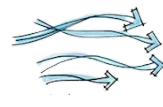
NATURAL CONDITIONS



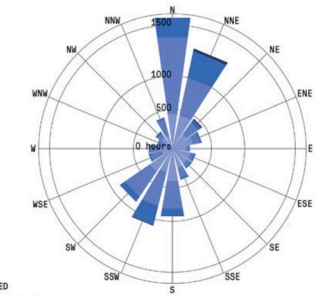
NOISE FROM THOUSAND OAKS BLVD. AND US-101



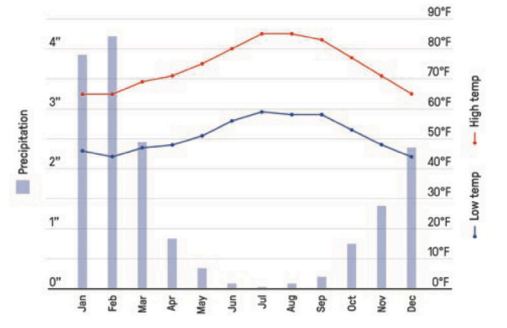
WIND PREVAILING: SEASONAL:



SUNPATH SUMMER WINTER



WIND SPEED



BUILDING LEGEND:

- (A) CITY HALL
- (B) THEATER & PERFORMANCE HALL
- (C) REFLECTING POOL
- (D) LIGHT WELL
- (E) PARKING LOT
- (F) LOADING ZONE
- (G) DROP-OFF ZONE



BUILT CONDITIONS



VEHICULAR CIRCULATION

- PRIMARY
- SECONDARY
- TERTIARY

PEDESTRIAN CIRCULATION

- PRIMARY
- SECONDARY
- TERTIARY

SITE ENTRY POINTS

- ENTRY TO FLOOR 2 (+14')
- ENTRY TO FLOOR 3 (+30')
- ENTRY TO FLOOR 3 (+28')

ON-SITE DESTINATIONS

- PRIMARY
 - CITY HALL
 - THEATER
- SECONDARY
 - BOX OFFICE
 - SHADE STRUCTURE

OFF-SITE DESTINATIONS

- GARDENS OF THE WORLD
- THE LAKES

BUILDING LEGEND:

- CITY HALL
- THEATER & PERFORMANCE HALL
- REFLECTING POOL
- LIGHT WELL
- PARKING LOT
- LOADING ZONE
- DROP-OFF ZONE



TREE CANOPY



OAK TREES - *Quercus sp.*



SYCAMORE TREES - *Platanus racemosa*

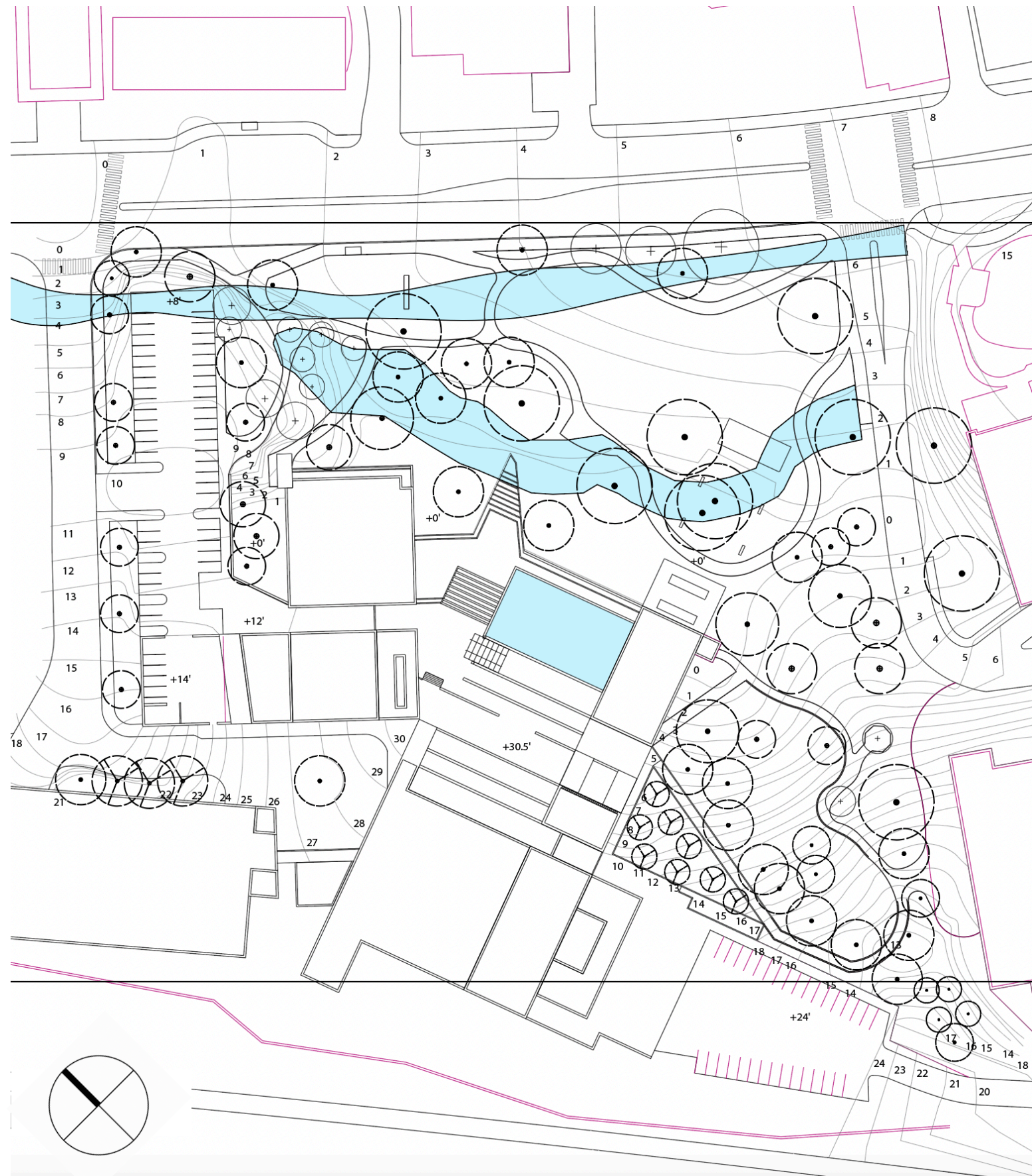


PINE TREES - *Pinus sp.*



OTHER TREES - *Various species*

WATER FEATURES



REFLECTING POOL - Viewed from 2nd floor

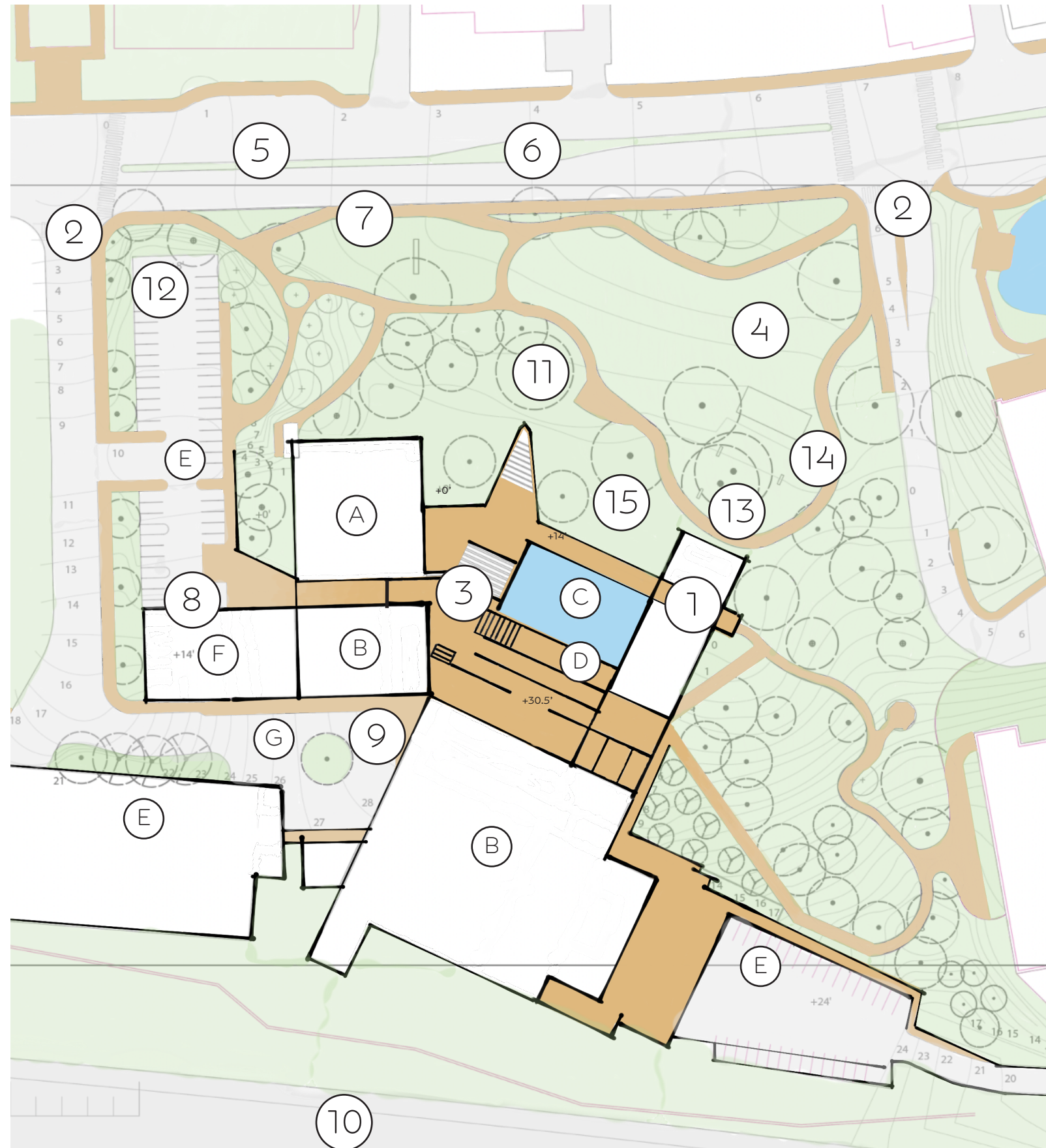


DRY CREEK BED - Resolved flooding issues



DRAINAGE - Along Thousand Oaks Blvd

CONSTRAINTS



- ① LACK OF IDENTITY
- ② LACK OF CONNECTIVITY WITH ADJACENT SITES
- ③ CONFUSING PLAZA ENTRANCES AND TERRACES
- ④ NARROW WALKWAYS, CROWDED BY LARGE TREES
- ⑤ BUSY THOROUGHFARE, WITH FAST-MOVING TRAFFIC
- ⑥ NOISE FROM BOULEVARD TRAFFIC
- ⑦ MAINTAIN TRANSIT HUB
- ⑧ MAINTAIN ACCESS TO LOADING ZONE
- ⑨ MAINTAIN DROP-OFF ZONE
- ⑩ NOISE FROM FREEWAY TRAFFIC
- ⑪ 15' PROTECTIVE RADIUS AROUND OAKS

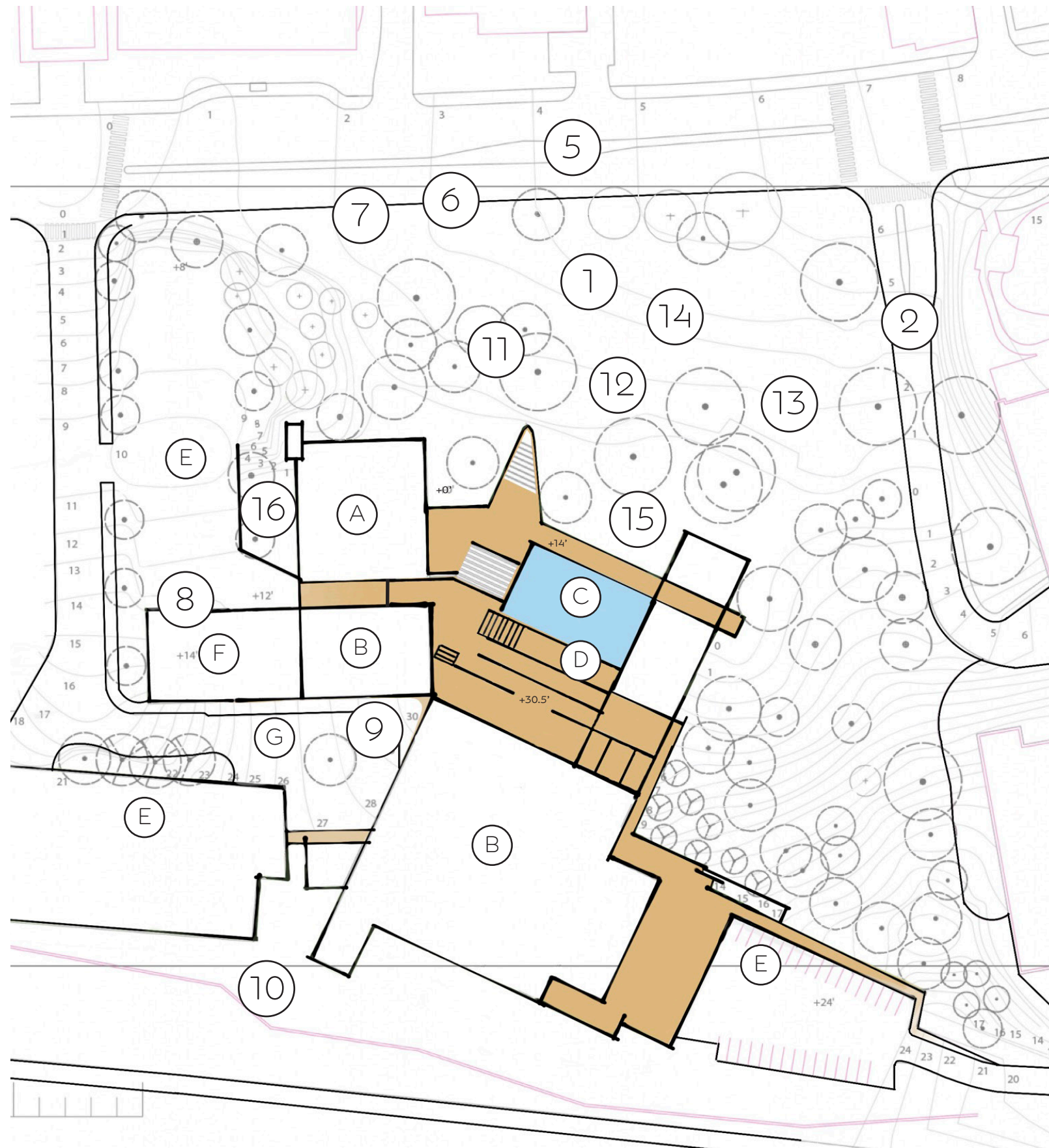
BUILDING LEGEND:

- Ⓐ CITY HALL
- Ⓑ THEATER & PERFORMANCE HALL
- Ⓒ REFLECTING POOL
- Ⓓ LIGHT WELL
- Ⓔ PARKING LOT
- Ⓕ LOADING ZONE
- Ⓖ DROP-OFF ZONE

- ⑫ MOSTLY DECIDUOUS TREES (LACK OF FOLIAGE IN WINTER)
- ⑬ EXISTING SHADE STRUCTURE SMALL, W/ POOR VIEW/SOUND
- ⑭ LACK OF PLANT VARIETY
- ⑮ MAINTAIN WATER FEATURES FOR STORMWATER MANAGEMENT



OPPORTUNITIES



- ① LARGE SITE TO DEVELOP MAIN TOWN SQUARE WITH DISTINCTIVE CHARACTER AND IDENTITY
- ② ADD PEDESTRIAN BRIDGE TO CONNECT TO THE LAKES, ADD CONNECTION POINT TO NEW RESIDENTIAL COMPLEX
- ③ CONNECT GROUND-FLOOR TO TERRACES VIA NEW MAIN ENTRY, MAKE ENTERANCES MORE VISIBLE, ADD CONSISTENT WAYFINDING SIGNAGE
- ④ WIDEN WALKWAYS, DISTANCED FROM OAKS
- ⑤ IMPLEMENT TRAFFIC-SLOWING PROTOCOLS, ADD CYCLIST LANE AND EASE PEDESTRIAN CROSSINGS
- ⑥ CONSTRUCT ELEVATED, LANDSCAPED BERMS TO REDUCE NOISE
- ⑦ EXPAND TRANSIT HUB, ADD BUS TURN-OUT
- ⑧ ENCLOSE LOADING ZONE, REPURPOSE PARKING LOT WITH HARDSCAPE
- ⑨ DROP-OFF ZONE WITH AESTHETIC HARDSCAPE, CLEAR ENTRIES
- ⑩ ADD HILLSIDE PLANTING TO REDUCE NOISE
- ⑪ PRESERVE HISTORIC OAKS, ADD SIGNAGE TO PROMOTE TOWN IDENTITY

BUILDING LEGEND:

- Ⓐ CITY HALL
- Ⓑ THEATER & PERFORMANCE HALL
- Ⓒ REFLECTING POOL
- Ⓓ LIGHT WELL
- Ⓔ PARKING LOT
- Ⓕ LOADING ZONE
- Ⓖ DROP-OFF ZONE

- ⑫ ADD EVERGREEN TREES FOR YEAR-ROUND FOLIAGE
- ⑬ NEW SHADE STRUCTURE FOR PERFORMANCE/MEETING SPACE
- ⑭ USE BEAUTIFUL, FRAGRANT, WATER-WISE NATIVE PLANTS AND CREATE HABITAT, RARE PLANT, ETHNO-BOTANY THEMED GARDENS WITH INFORMATIONAL SIGNAGE
- ⑮ USE WATER FEATURES AS FOCAL POINTS (CONEJO ARROYO, DRY CREEK BED, REFLECTING POOL)
- ⑯ UNUSED SPACE FOR QUIET NOOK





MATERIALS & PLANTS

PLANT PALETTE

NATIVE PLANTS OF VENTURA COUNTY SOUTHER OAK WOODLANDS & CHAPPARAL



Prunus illicifolia



Platanus racemosa



Quercus dumosa



Ribes malvaceum



Quercus agrifolia



Quercus engelmannii



Quercus lobata



Juglans californica



Frangula californica



Adenostoma sparsifolium



Ceanothus thyrsiflorus



Rhus integrifolia



Malva assurgentiflora



Arctostaphylos glauca



Ribes speciosum



Malocathamnus fasciculatus



Eriogonum fasciculatum



Epilobium canum



Eriogonum nudum



Sisyrinchium bellum



Heuchera maxima



Corethrogyne filaginifolia



Salvia mellifera



Diplacus aurantiacus



Salvia leucantha



Eriogonum grande
var. rubescens



Fremontodendron californica



Eriogonum crocatum



Sphaeralcea ambigua



Penstemon spectabilis



Eriophyllum confertiflorum



Verbena lilacina



Penstemon clevelandii



Salvia clevelandii



Keckiella antirrhinoides



Trichostema lanatum



Dudleya cymosa



Dudleya lanceolata



Dudleya pulverulenta



Arctostaphylos uva-ursi



Achillea millefolium



Salvia spathacea



Festuca idahoensis

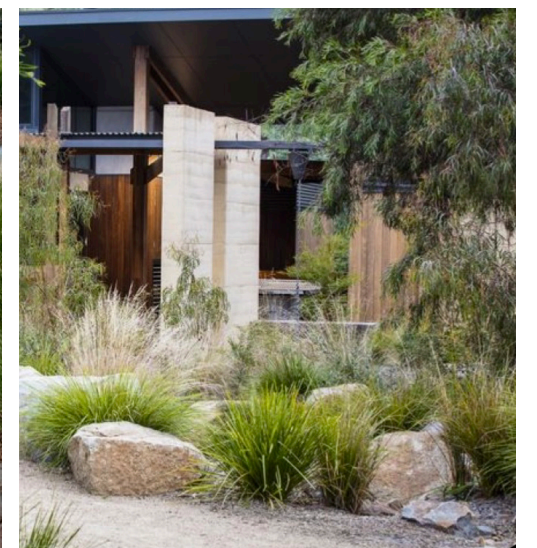
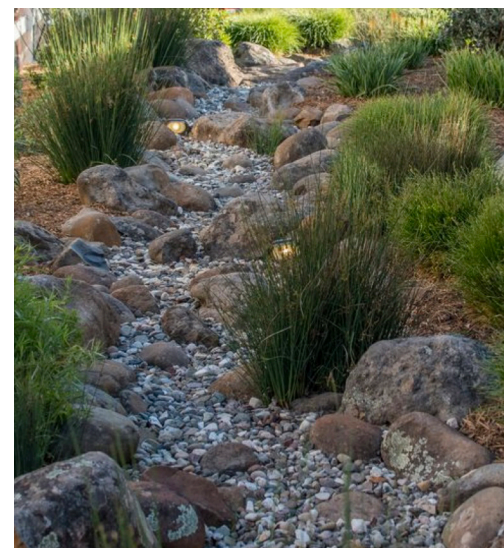
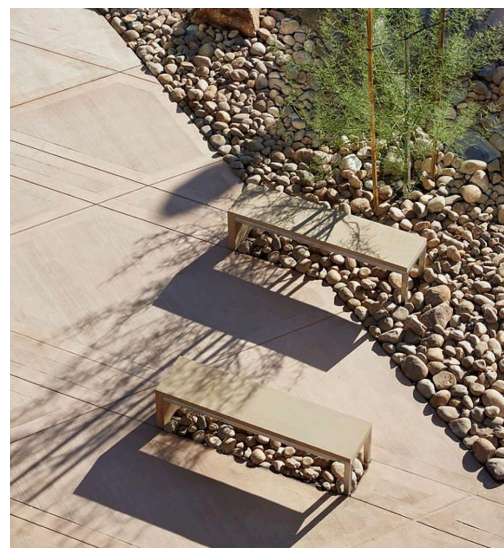
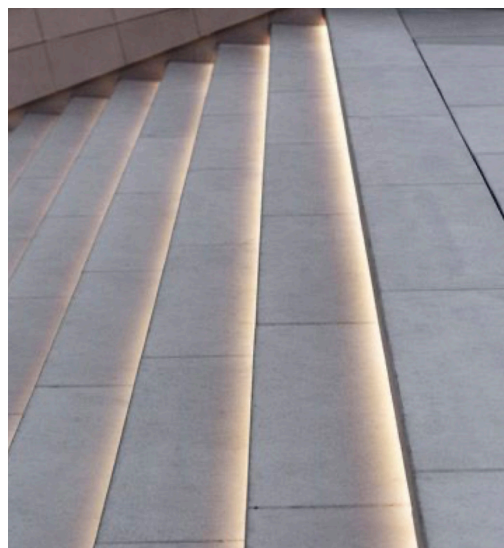
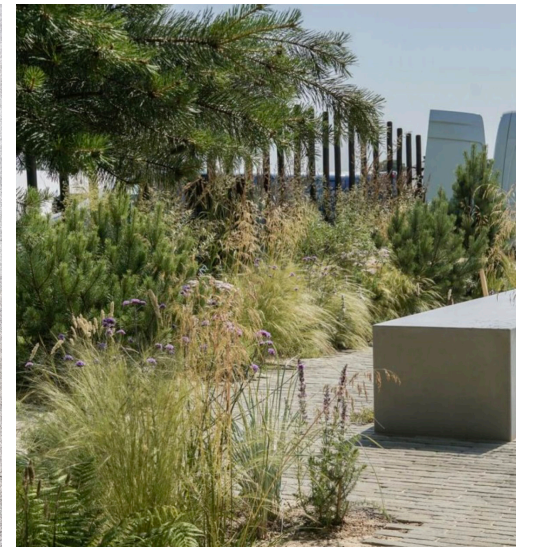
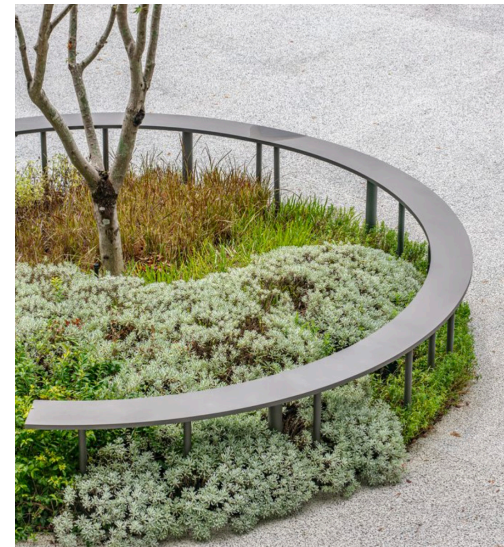
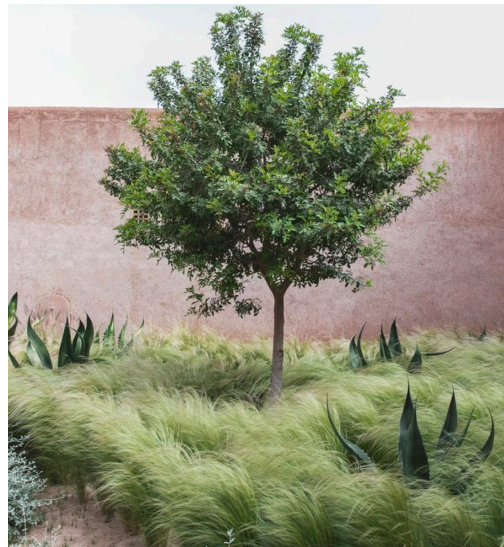


Muhlenbergia rigens



Carex praegracilis

MATERIALS



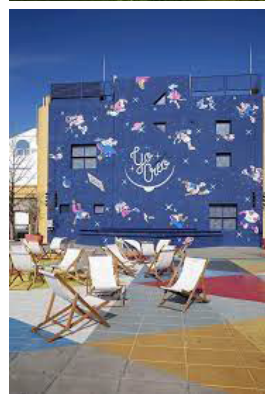
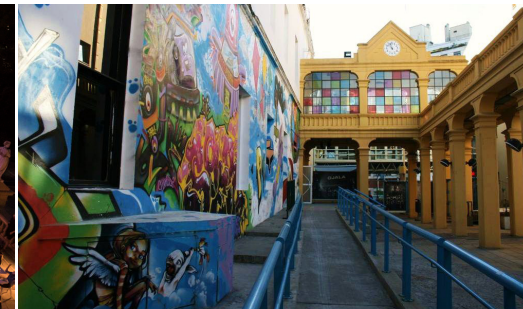
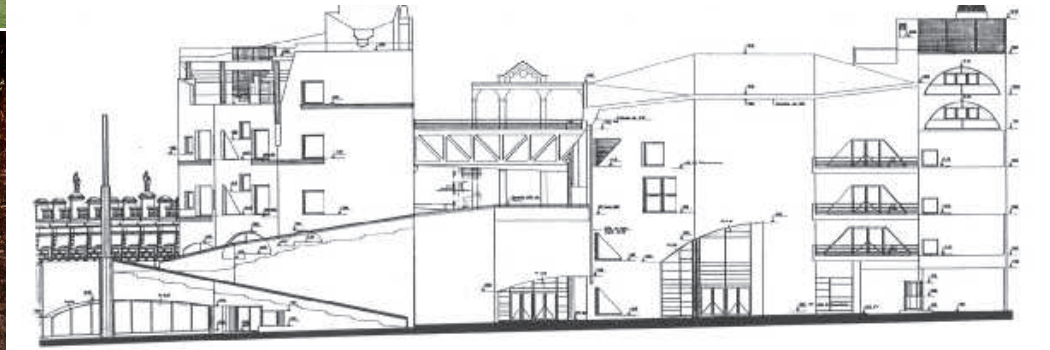
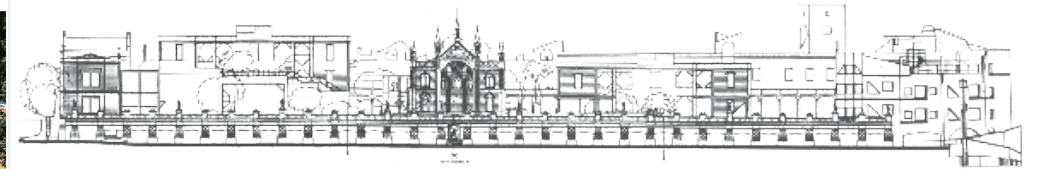
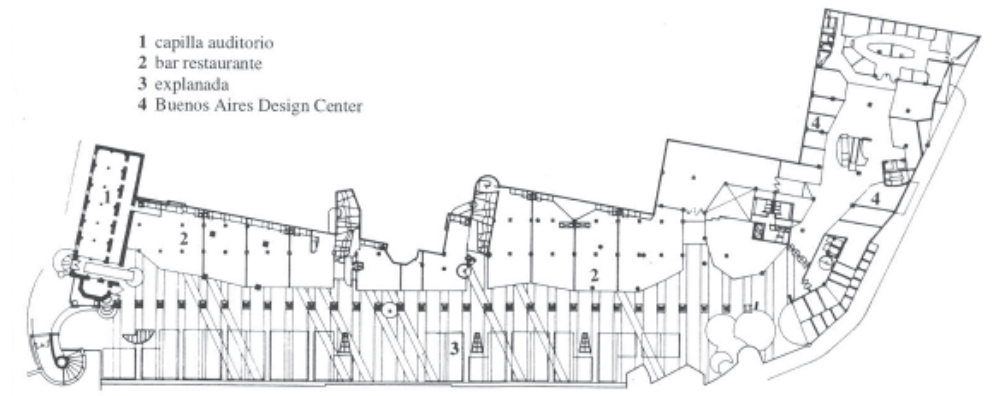
CONCEPT DEVELOPMENT



CASE STUDY 1

CENTRO CULTURAL RECOLETA Y BUENOS AIRES DESIGN | BUENOS AIRES, AR

REGISTERED HISTORICAL SITE. NEOCLASSICAL CHURCH BUILT IN 1737, ADJACENT TO THE RECOLETA CEMETERY. CENTRAL TO VARIOUS POPULAR PUBLIC PARKS (PLAZA FRANCIA), MUSEUMS, AND UNIVERSITY CAMPUSES. ACCESSIBLE BY SUBWAY, BUS, CAR, BIKES, AND PEDESTRIAN ROUTES. IN 1979, IT WAS REDESIGNED AND REPURPOSED INTO A CULTURAL CENTER FOR PUBLIC USE. IN 1993, IT WAS CONNECTED TO BUENOS AIRES DESIGN, AN ART DECO SHOPPING CENTER. TODAY, THE BUILDING IS INTERCONNECTED WITH A CHILDREN'S SCIENCE MUSEUM AS WELL. THE SPACE IS USED AS AN ARTS CENTER, PARTICULARLY BY YOUTHS IN THE COMMUNITY. IT HAS EXPOSITION HALLS, STAGES, THEATERS, AS WELL AS OUTDOOR MEETING HUBS. THE SHOPPING CENTER IS STILL IN USE AND ALSO FEATURES A MODERN ROOFTOP TERRACE WITH BARS AND RESTAURANTS THAT OVERLOOK A PARK. THE WHOLE SITE IS VERY POPULAR AND REGULARLY VISITED BY LOCALS OF ALL AGES.



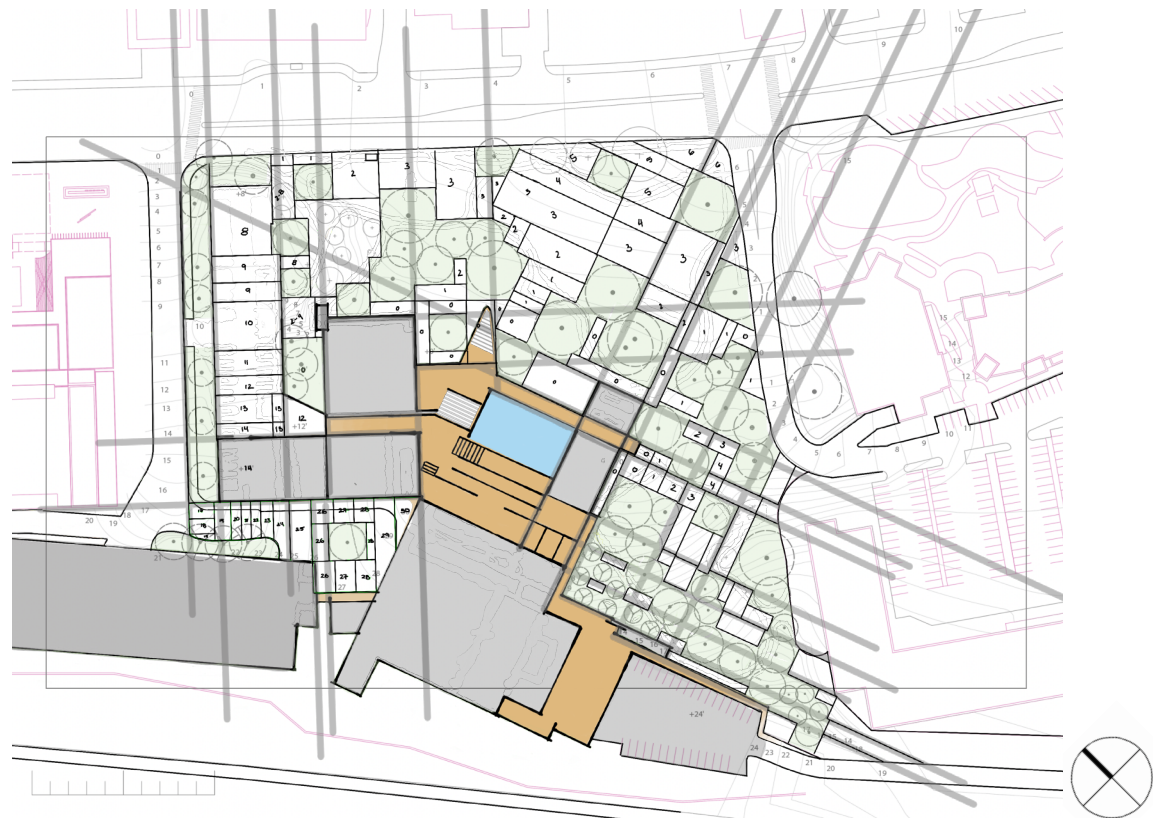
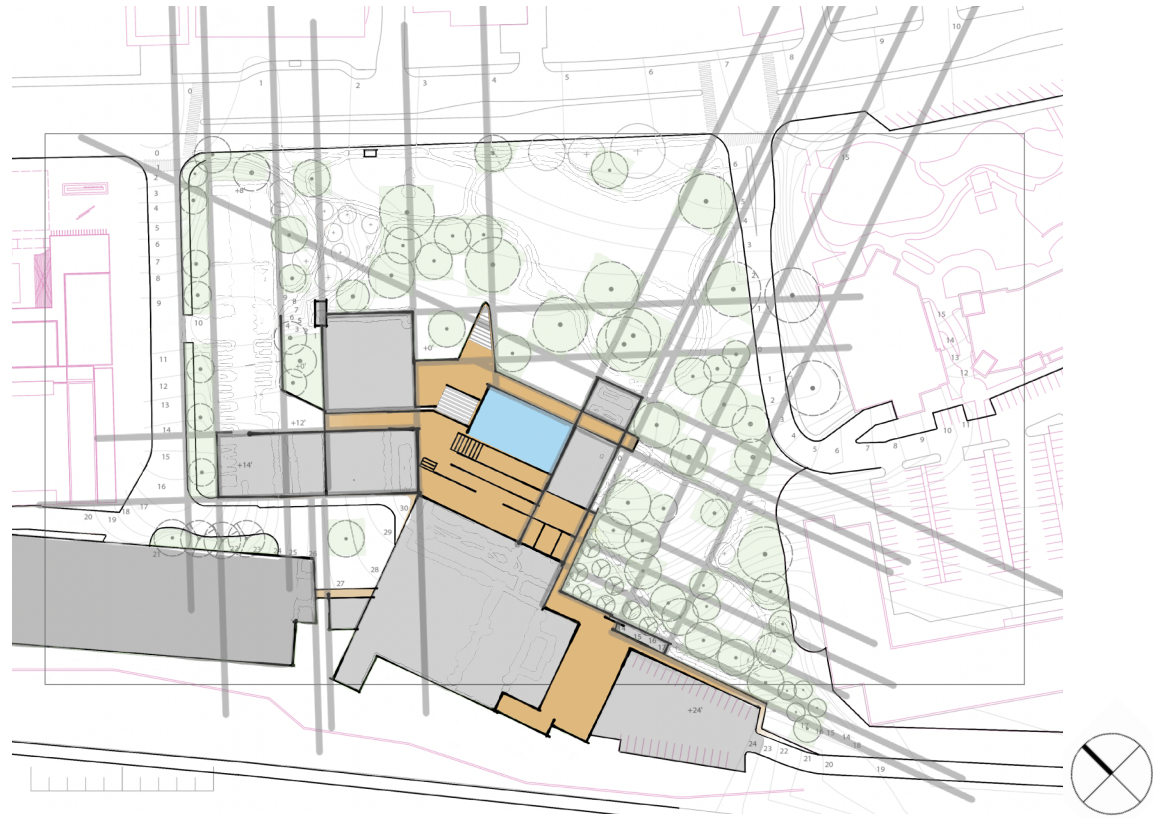
CASE STUDY 2

CITY HALL AND PARK | NEWPORT BEACH, CA | PWP

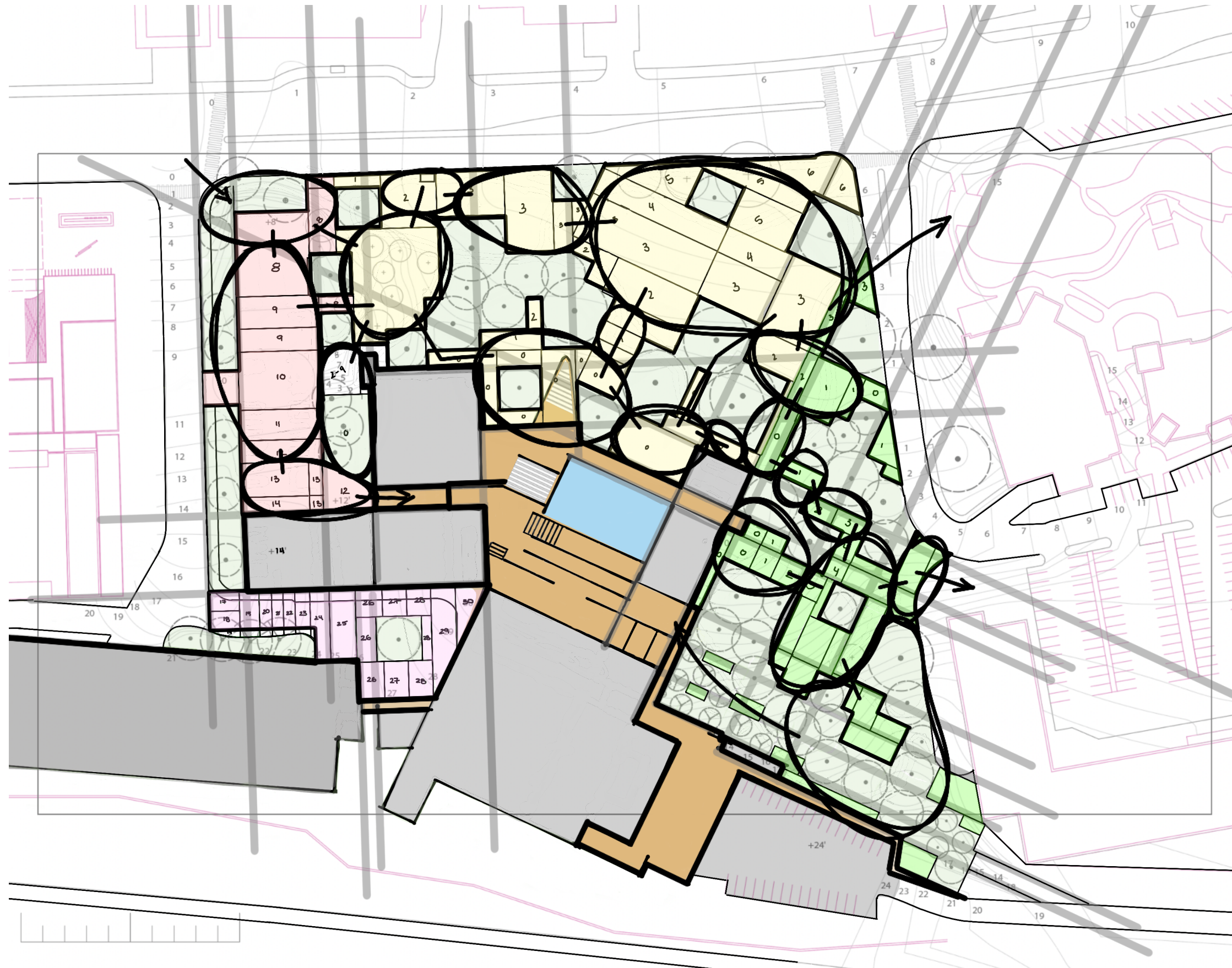
THE NEWPORT BEACH CIVIC CENTER PARK, DESIGNED BY LANDSCAPE ARCHITECTURE FIRM PETER WALKER AND PARTNERS, IS A DYNAMIC BLEND OF OPEN SPACE, SUSTAINABLE LANDSCAPING, AND MODERN ARCHITECTURE. THE PARK FEATURES EXTENSIVE NATIVE AND DROUGHT-TOLERANT PLANTINGS, WHICH REFLECT SOUTHERN CALIFORNIA'S NATURAL COASTAL ENVIRONMENT WHILE SUPPORTING WATER CONSERVATION EFFORTS. WALKING TRAILS MEANDER THROUGH ROLLING HILLS, OFFERING VIEWS OF BOTH THE CITY AND THE OCEAN. NOTABLE LANDSCAPE DESIGN ELEMENTS INCLUDE SCULPTURAL LANDFORMS AND INTEGRATED STORMWATER MANAGEMENT SYSTEMS, CREATING AN ECOLOGICALLY SENSITIVE AND VISUALLY APPEALING SPACE. ARCHITECTURALLY, THE CIVIC CENTER'S ICONIC "SEISMIC WAVES" DESIGN STANDS OUT, WITH A STRIKING BRIDGE THAT SPANS OVER THE PARK'S WETLANDS AND CONNECTS THE CIVIC BUILDINGS, ENHANCING BOTH PEDESTRIAN FLOW AND AESTHETIC APPEAL. THE PARK COMBINES FUNCTIONALITY, ENVIRONMENTAL SUSTAINABILITY, AND PUBLIC ENGAGEMENT, MAKING IT A KEY COMMUNITY ASSET.



SPACE STUDY 2



BUBBLE DIAGRAM 2



- SITE ENTRY POINTS
- MULTI-PURPOSE PLAZA
- ACCESS TO CITY HALL/LOADING ZONE
- SUNKEN GARDEN
- OAK WOODLAND
- NEW BUILDING ENTRANCE
- MULTI-PURPOSE PLAZA
- LIVING TIME CAPSULE
- BIOSWALE
- CHILDREN'S PLAYSCAPE
- SECRET GARDEN



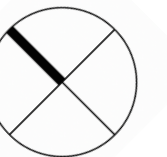
MASTER PLAN



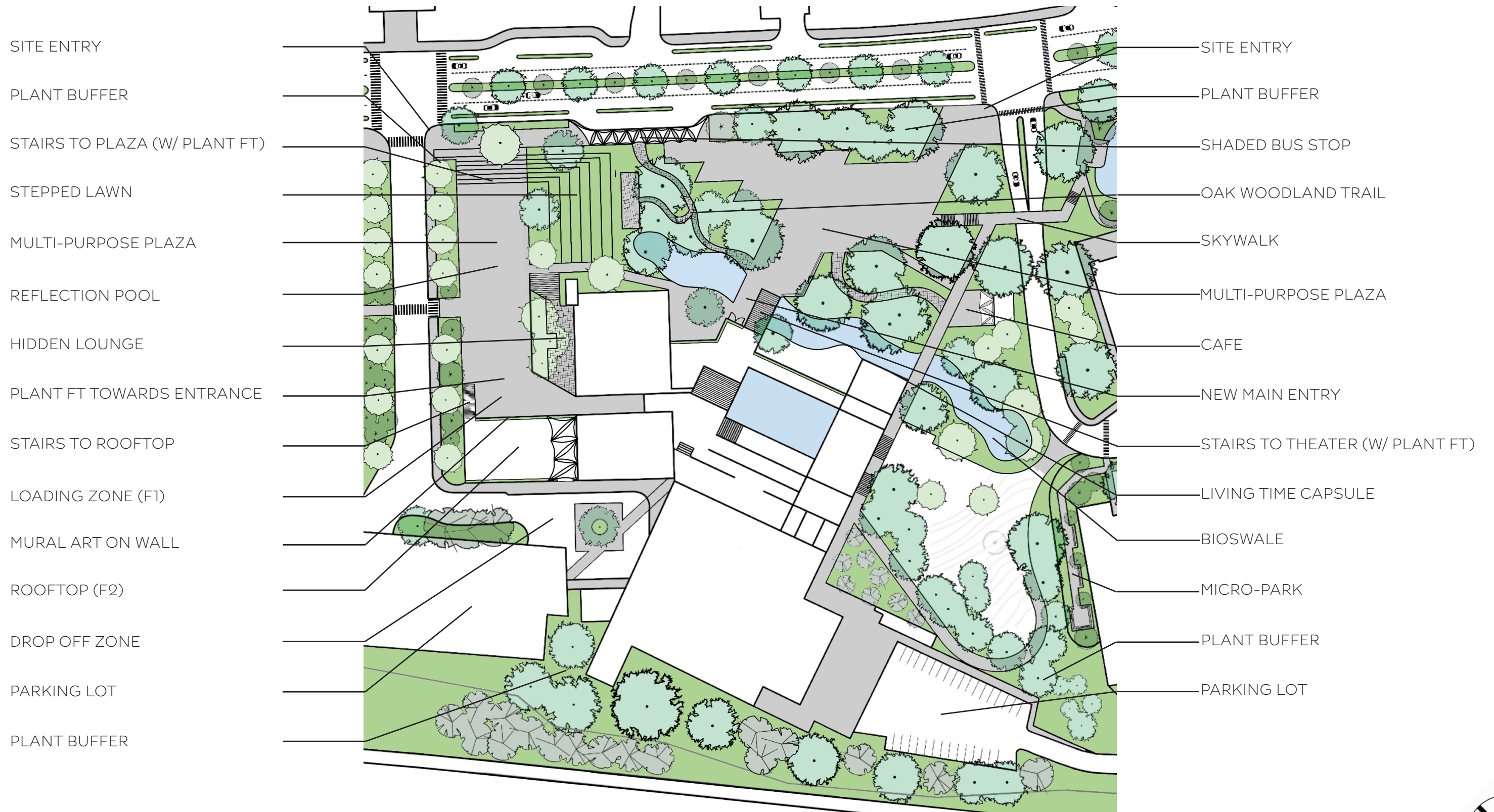
ILLUSTRATIVE PLAN



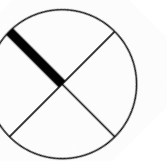
1" = 100' - 0"



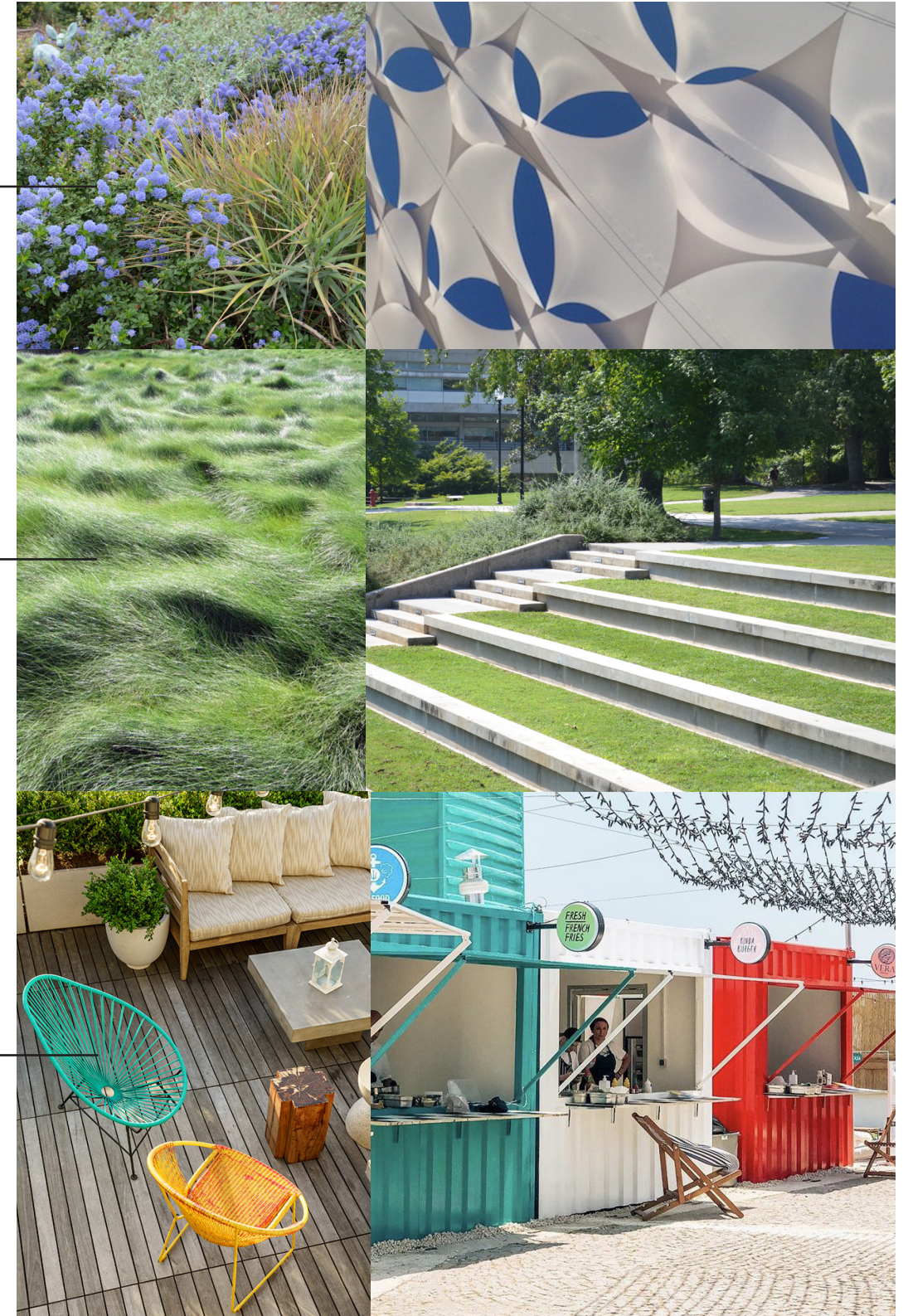
ILLUSTRATIVE PLAN



1" = 100' - 0"



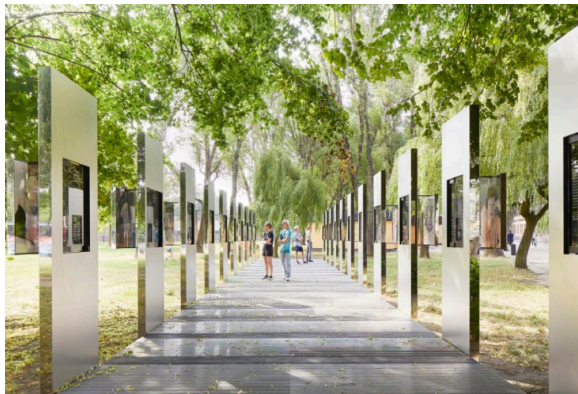
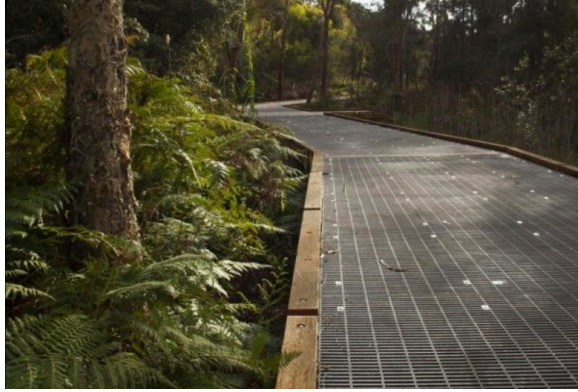
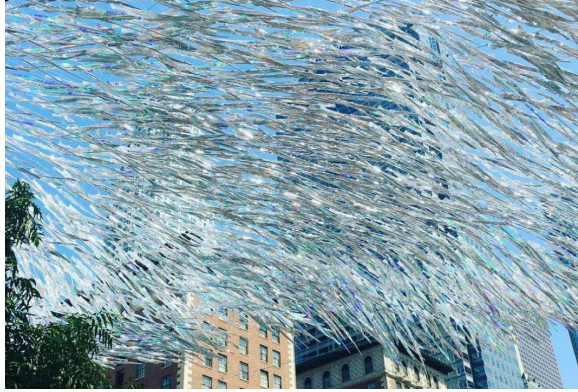
ZONE 1



SCALE



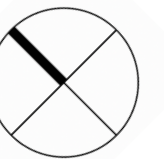
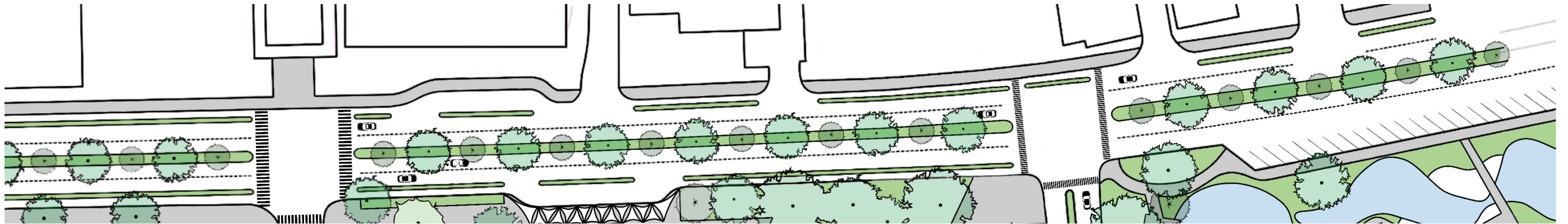
ZONE 2



SCALE

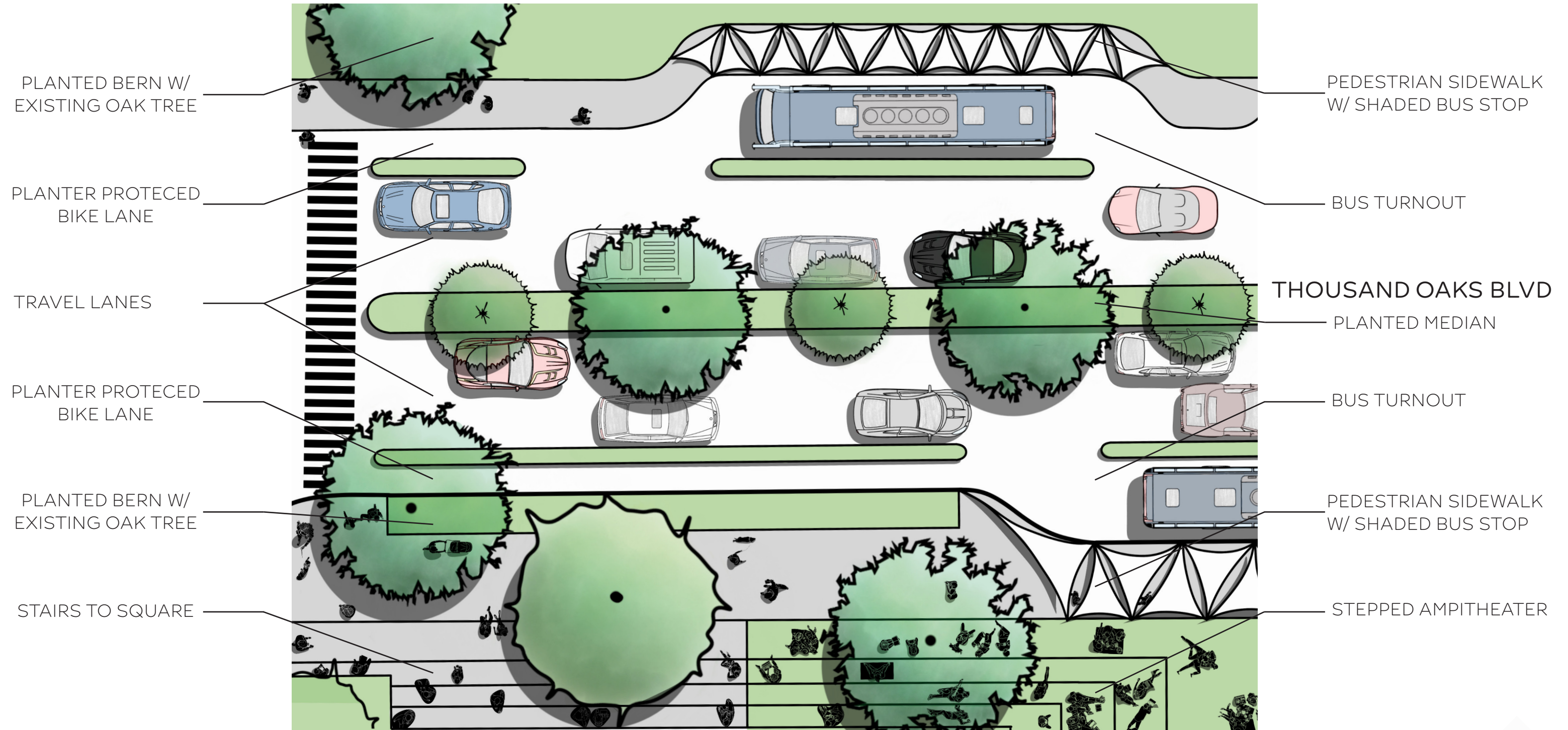


ZONE 4



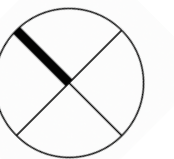
ENLARGEMENT 4 - "MAIN STREET"

GARDENS OF THE WORLD

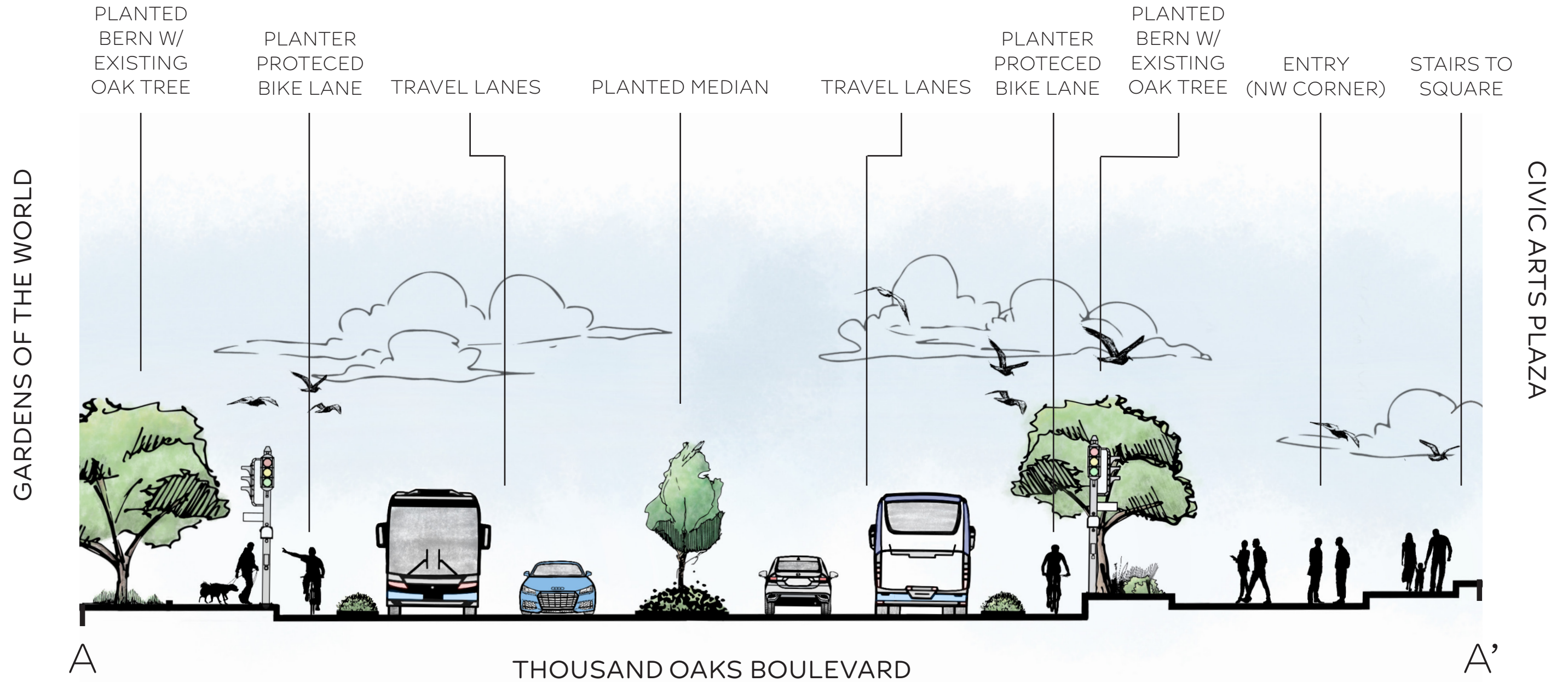


CIVIC ARTS PLAZA

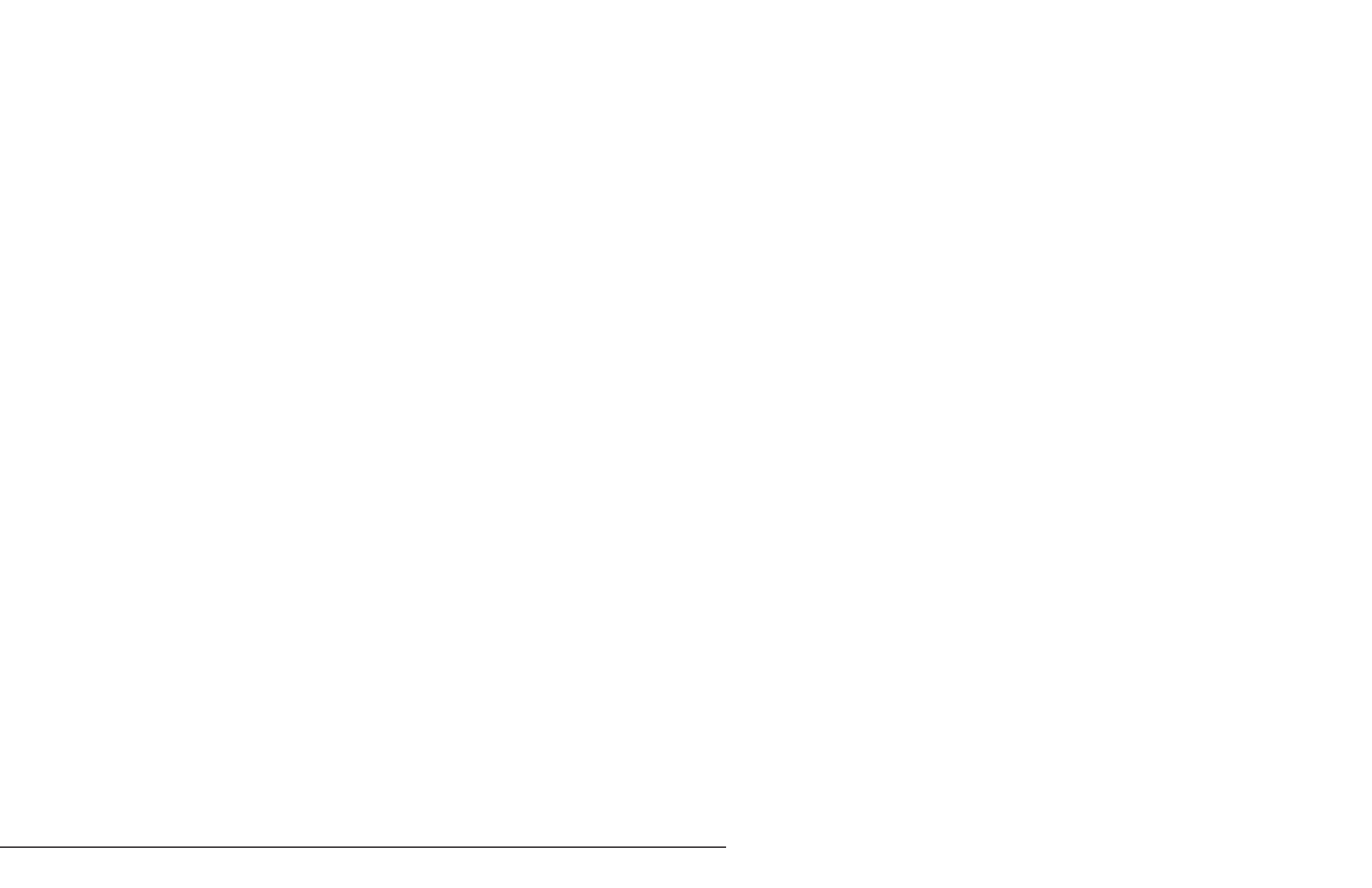
1" = 20'-0"



SECTION/ELEVATION 4



1" = 10'-0"



REFERENCES

REFERENCES

<https://www.rios.com/projects/lynn-wyatt-square-for-the-performing-arts/>
<https://divisare.com/projects/414976-estudio-mmx-dane-alonso-jardines-centrales-de-jojutla>
<https://www.dezeen.com/2019/10/21/brick-arcade-mmx-earthquake-public-square-mexico/>
<https://www.sambataroarquitectos.com/centro-cultural-recoleta>
<https://es.wikiarquitectura.com/edificio/centro-cultural-recoleta-y-buenos-aires-design/>
<https://www.lincolnparklb.com>
<https://www.ggnltd.com/long-beach-civic-center>
<https://www.archdaily.com/930101/the-public-square-and-gardens-at-hudson-yards-nelson-byrd-woltz-landscape-architects>
<https://www.pwpla.com/projects/newport-beach-city-hall-and-park>
<https://www.scapestudio.com/projects/hall-science-planted-terrace/>
<https://www.rios.com/projects/palm-springs-downtown-park/>
<https://www.rios.com/projects/universal-plaza/>
<https://www.pwpla.com/projects/jamison-square>
<https://www.scapestudio.com/projects/first-ave-plaza/>
<https://www.scapestudio.com/projects/first-ave-plaza/>
<https://landezine.com/catharina-amalia-park-apeldoorn-by-okra/>
<https://www.aspect-studios.com/projects/prahran-square>
<https://www.archdaily.com/912462/usaquen-urban-wetland-cesb-obraestudio>
<https://www.eyrc.com/work/lavc-academic-and-cultural-center>
<https://www.eyrc.com/work/9300-culver-boulevard-mixed-use-development-parcel-b>
<https://rareplants.cnps.org/Search/result?frm=T&sl=1&quad=3411827:3411828:3411826:3411818:3411817:3411816:3411838:3411837:3411836:&elev=:m:o>
<https://kckarchitects.com/thousandoaks-plaza/>
https://static1.squarespace.com/static/5e3204de238f5a218cce2c5a/t/5eac94089a7f5a59bfc44b0/1588368397381/TO+GPU+ECR+++Demographic+Economic+Profile_FINAL+REVISED+2045Projections+4-15-20.pdf
https://mortonarbprod.wpengine.com/app/uploads/2021/05/conservation-gap-analysis-of-native-US-oaks_sm.pdf
<https://scag.ca.gov/sites/main/files/file-attachments/p0222-thousand-oaks.pdf?1655309506>
<https://www.toaks.org/home/showpublisheddocument/47231/638187841821270000>
<https://rareplants.cnps.org/Search/result?frm=T&sl=1&quad=3411827:3411828:3411826:3411818:3411817:3411816:3411838:3411837:3411836:&elev=:m:o>
<https://architizer.com/projects/the-garden-that-climbs-the-stairs-bilbao-jardin-2009/>