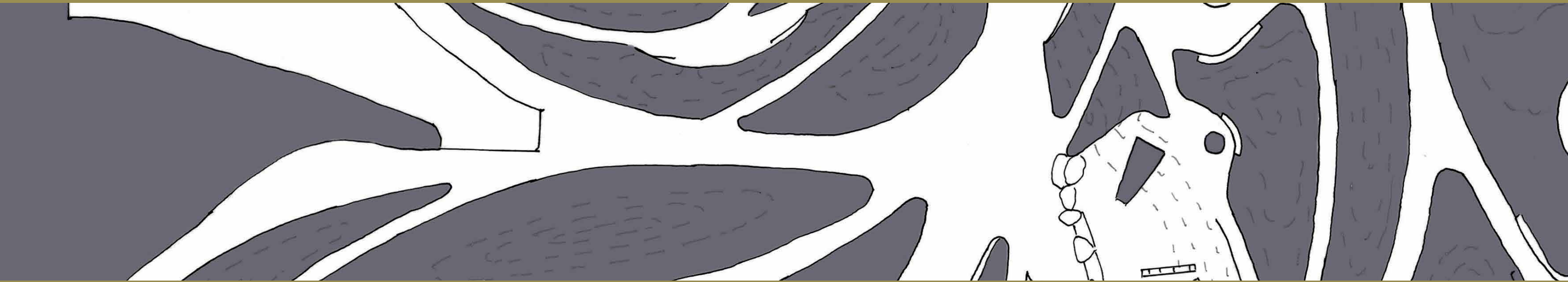
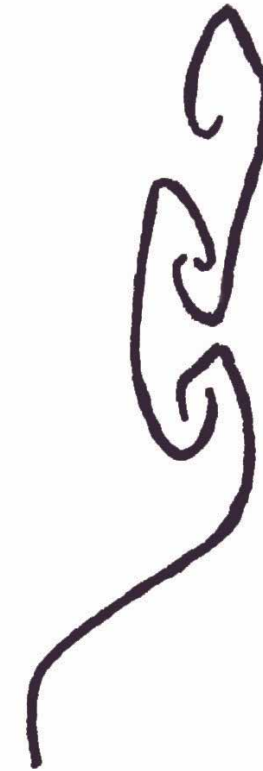


# Tongva Park Connections



Kristin Byrd  
DG3, Spring 2024  
UCLA Extension

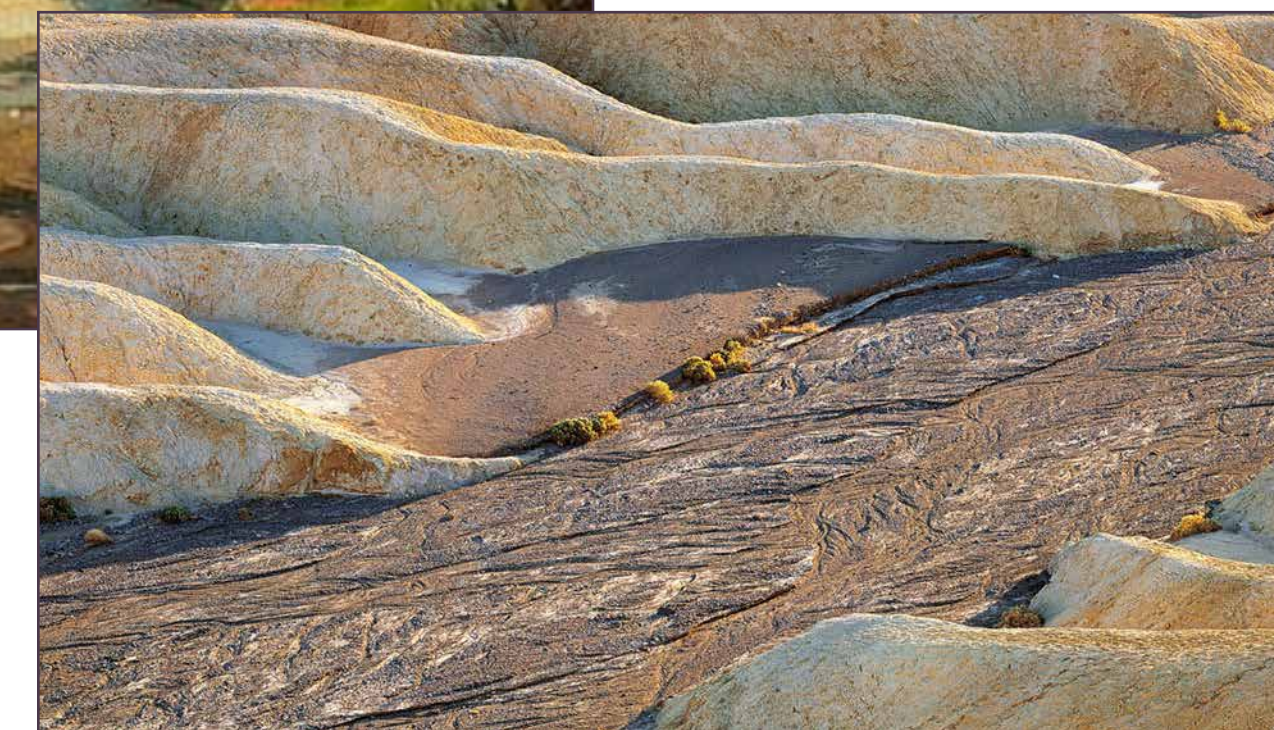




# Tongva Park Connections

## Table of Contents

Introduction.....	4
History .....	6
First Graphics .....	8
Site Analysis .....	12
Illustrative Plan .....	16
Enlargement .....	18
Section/Perspectives .....	20
Plant Palette .....	22
Materials .....	23
Biography .....	24
Acknowledgements .....	25

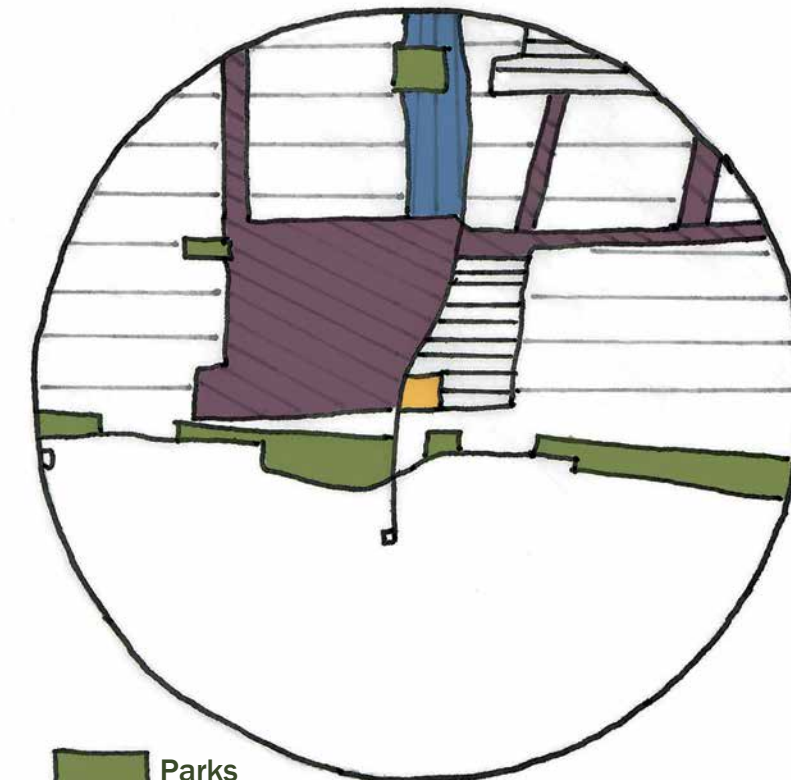
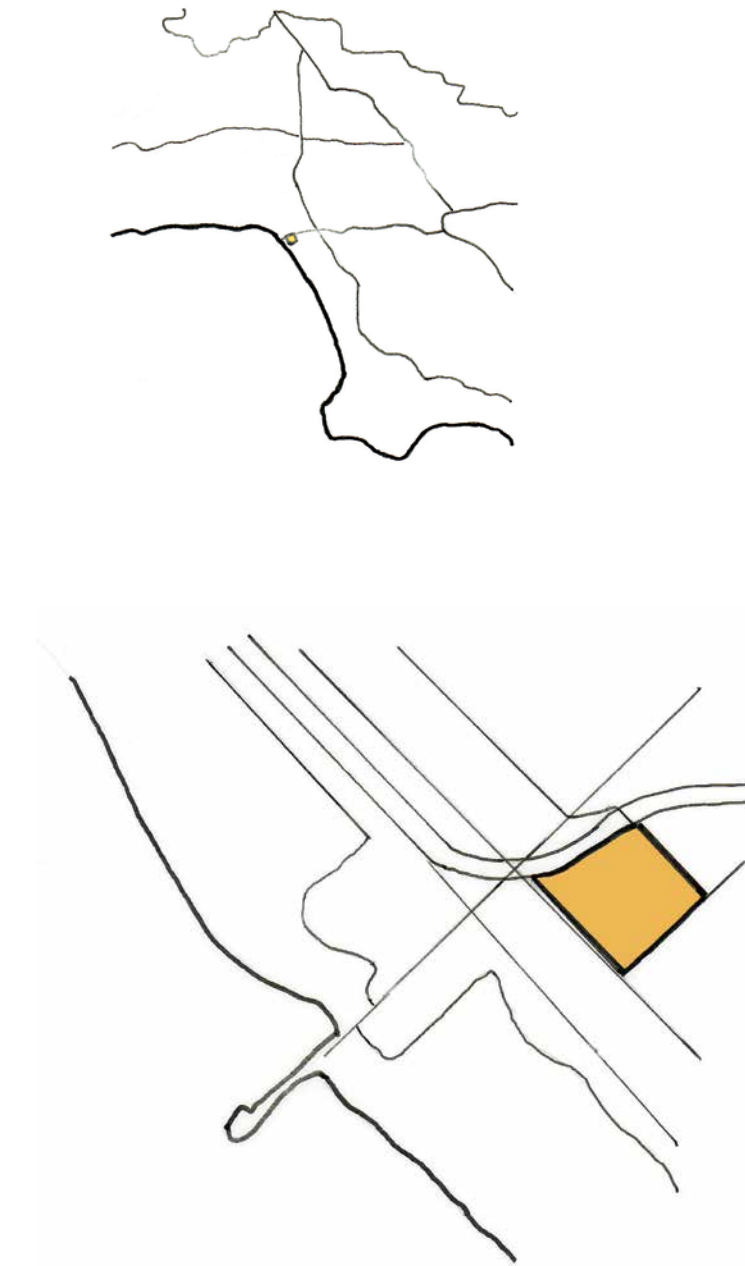




# Introduction

**Tongva Park** represents connections: connections between land and sea, from past to present. Tongva Park is situated in the heart of Santa Monica, California, between City Hall, the Interstate-10 Freeway, and Ocean Avenue and the Santa Monica Pier. Previously the site of a flat parking lot, the rolling hills, swales, Mediterranean meadow gardens and extensive native plantings reflect the original arroyo landscapes of Southern California.

## Context

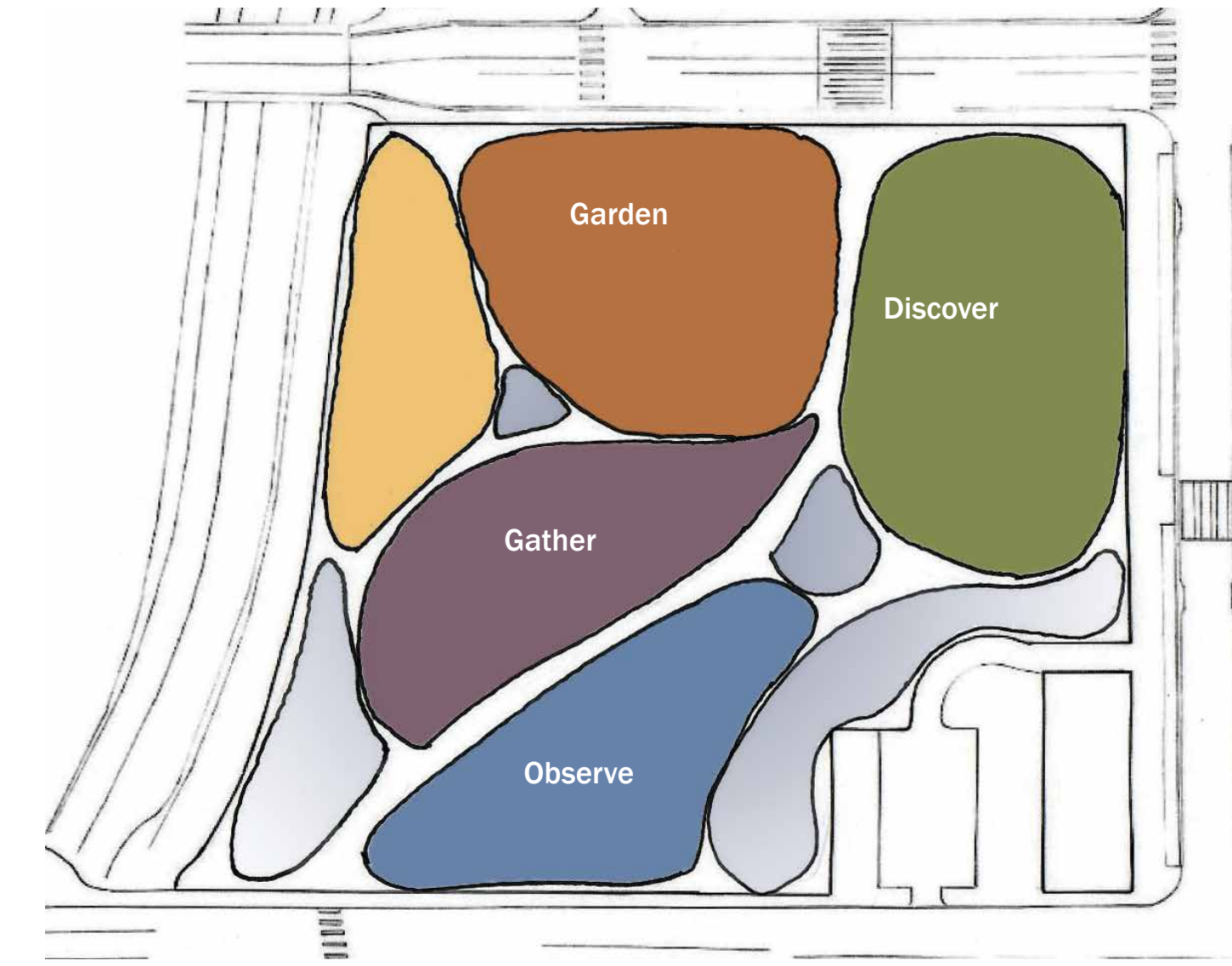


Context Diagram

- Parks
- Commercial
- Public Land
- Industrial
- Residential

N.T.S.

## Concept

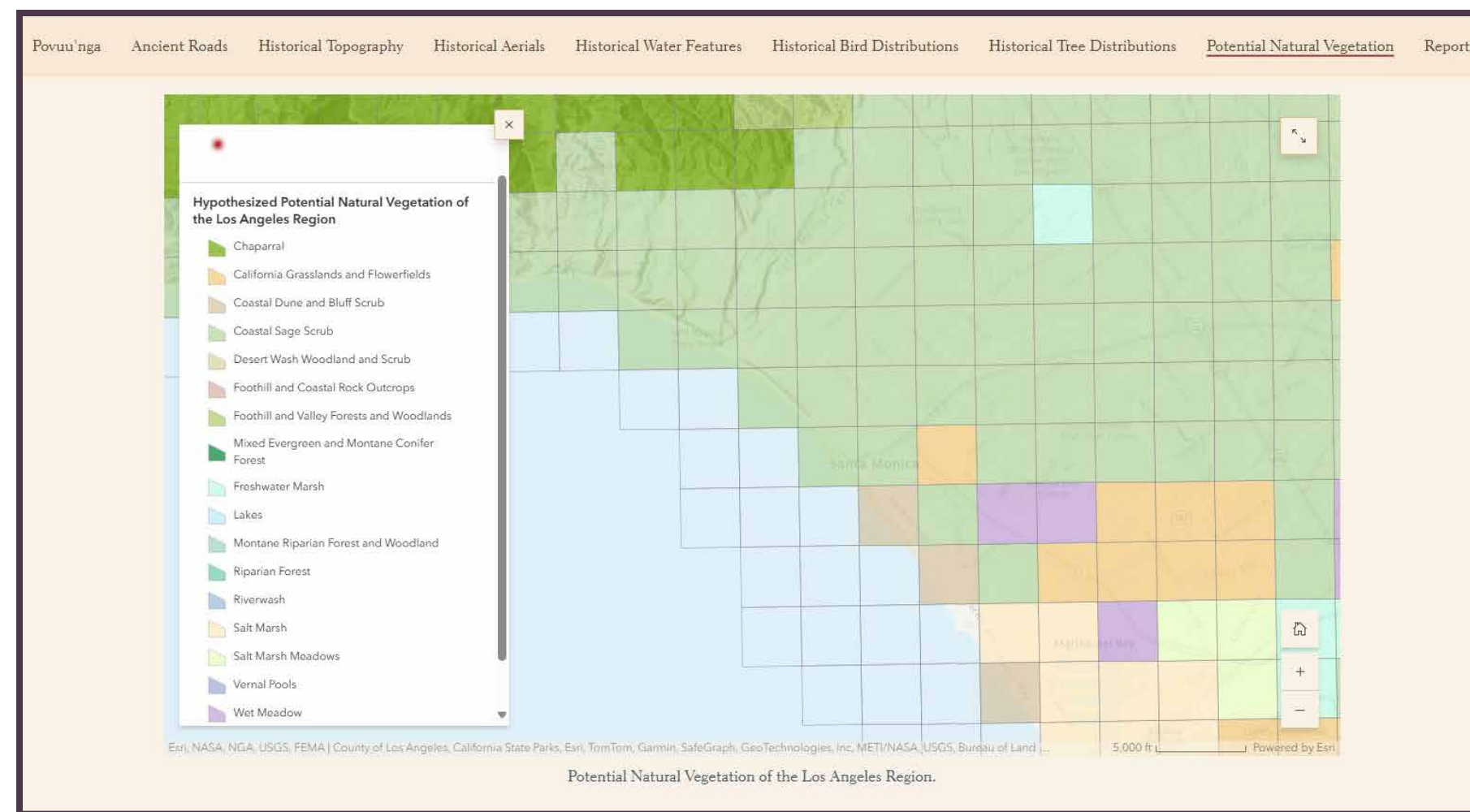


Concept Diagram



# History

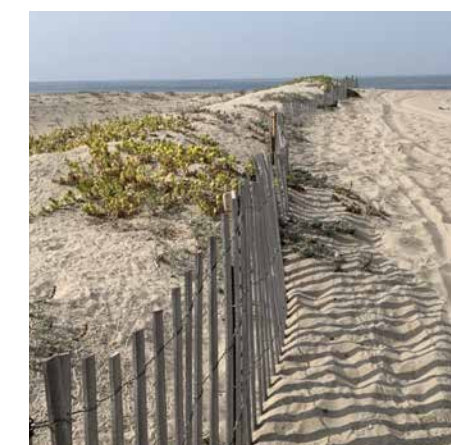
**Before** the arrival of Spanish settlers, the area that is now Santa Monica was dominated by coastal sage scrub, grasslands and coastal dune and bluff scrub vegetation. The landscape was shaped by Indigenous people who used fire management, cultivation and pruning for over 10,000 years. Over time, the city was developed and the Tongva Park site was converted into a parking lot for the Rand Corporation. Now, the park represents a restoration of the historical environment.



Los Angeles Landscape History - Historical Ecology (landscapehistory.org)



coastal sage scrub



coastal dune



grasslands



Santa Monica, 1941



Santa Monica, 1994

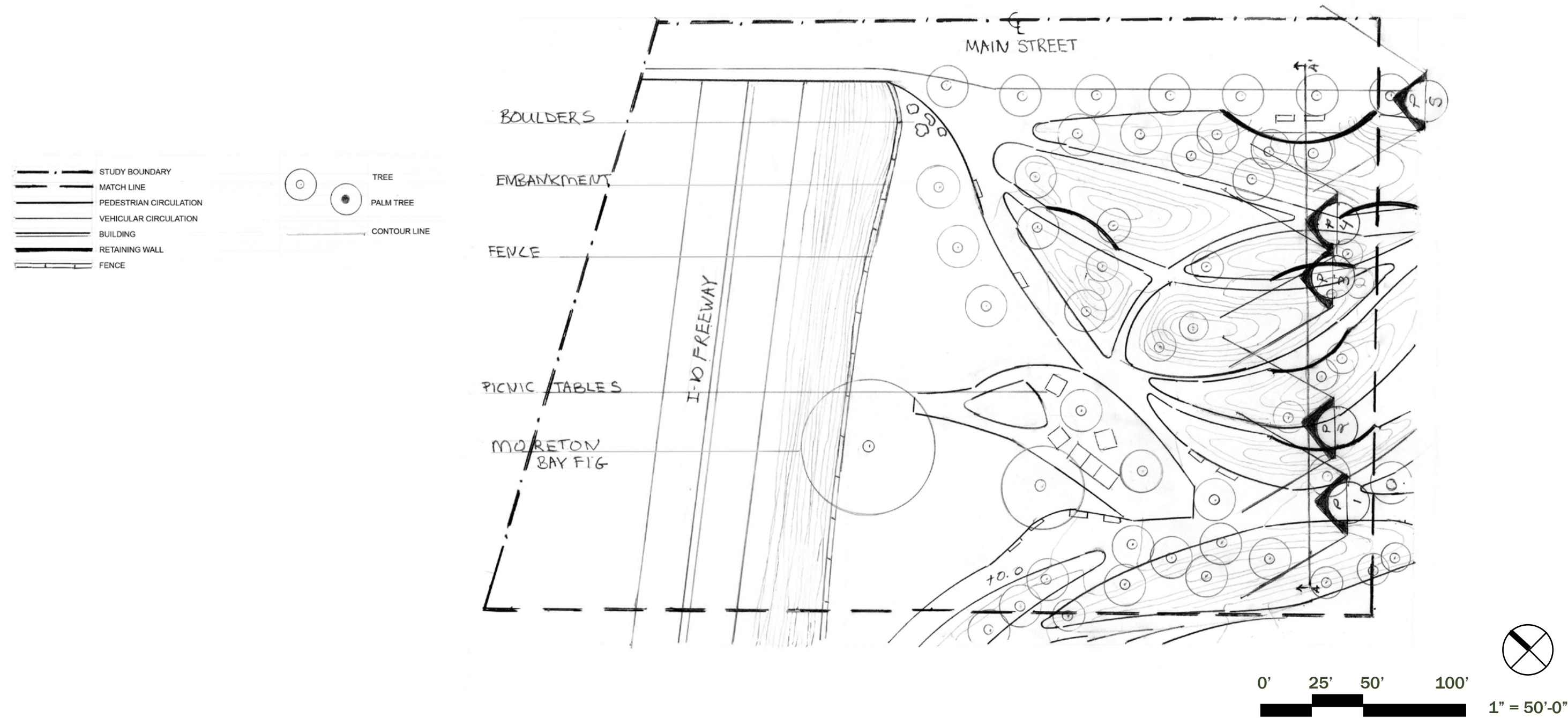


The old parking lot

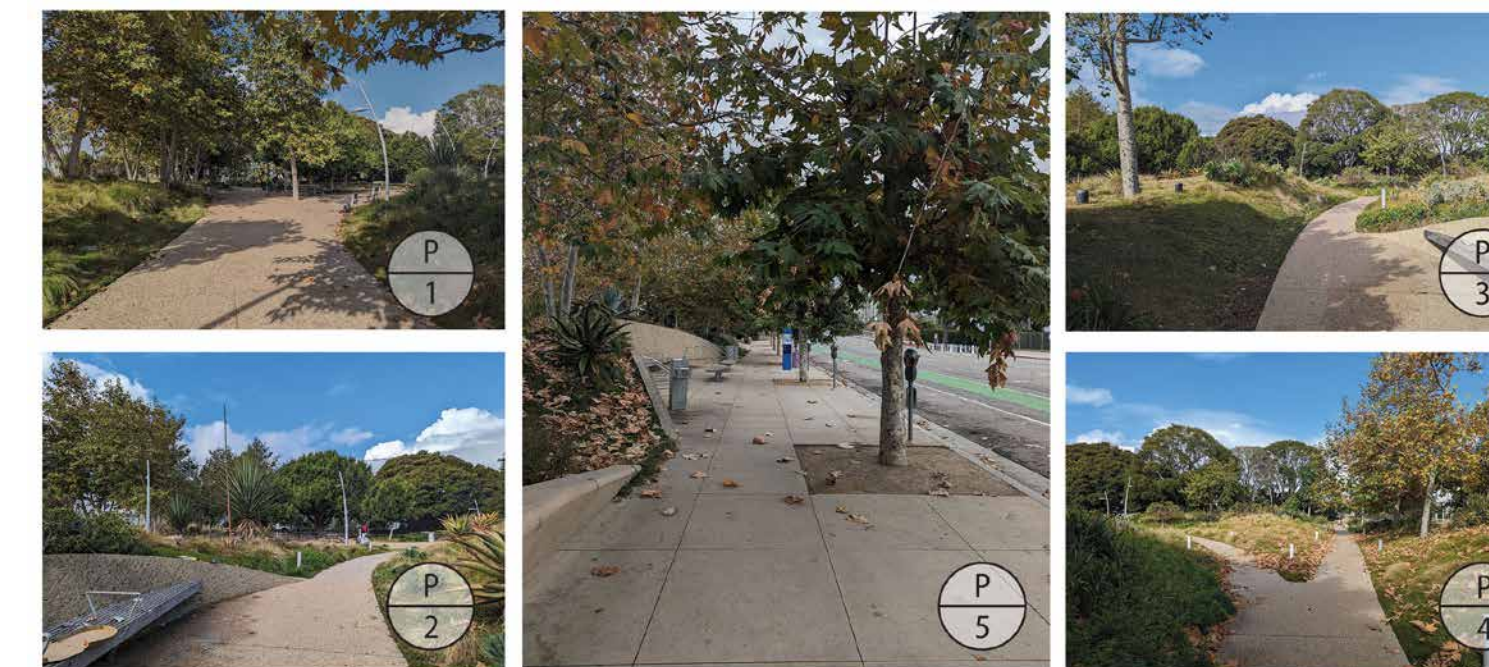
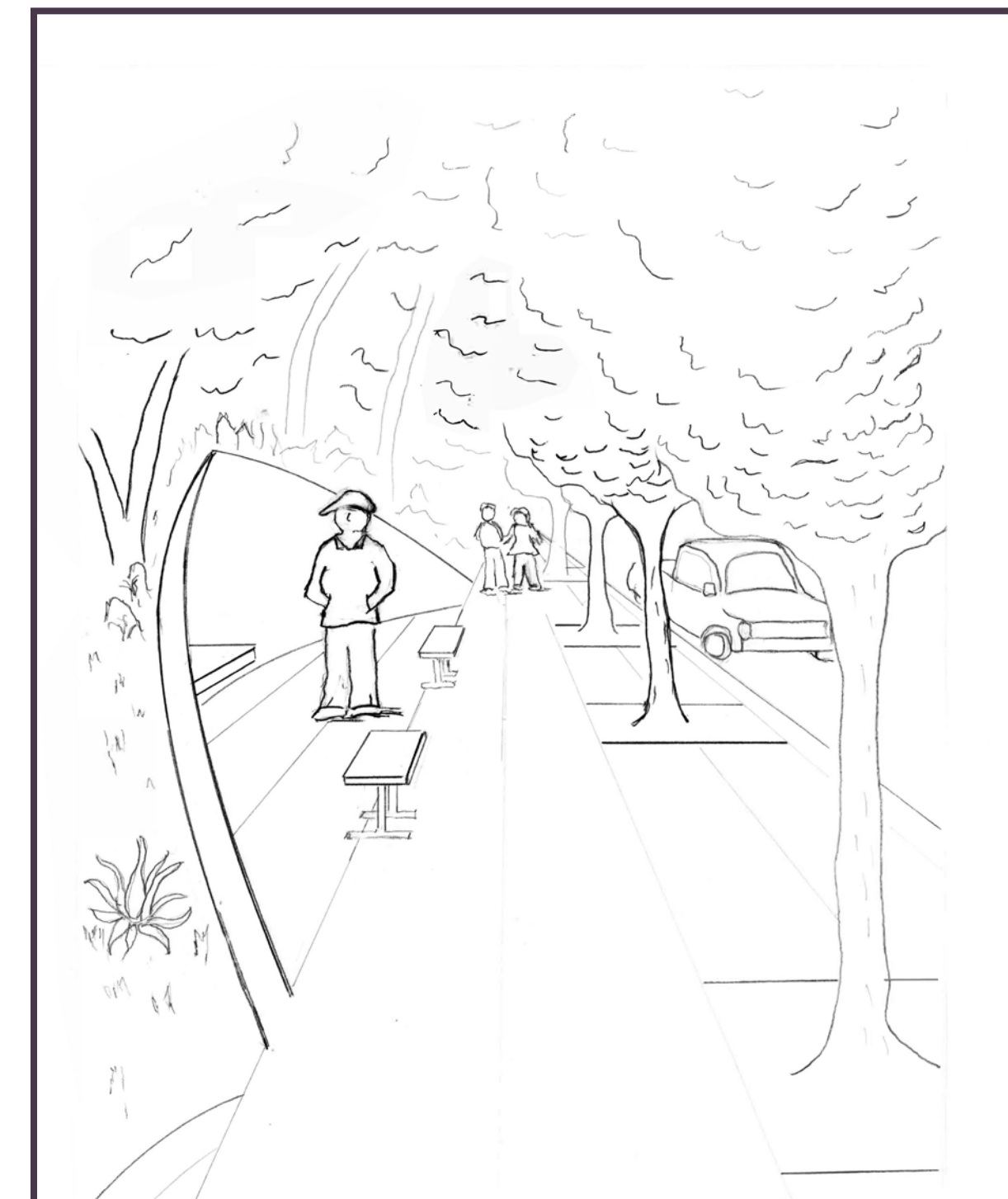


# First Graphics

## Layout Plan



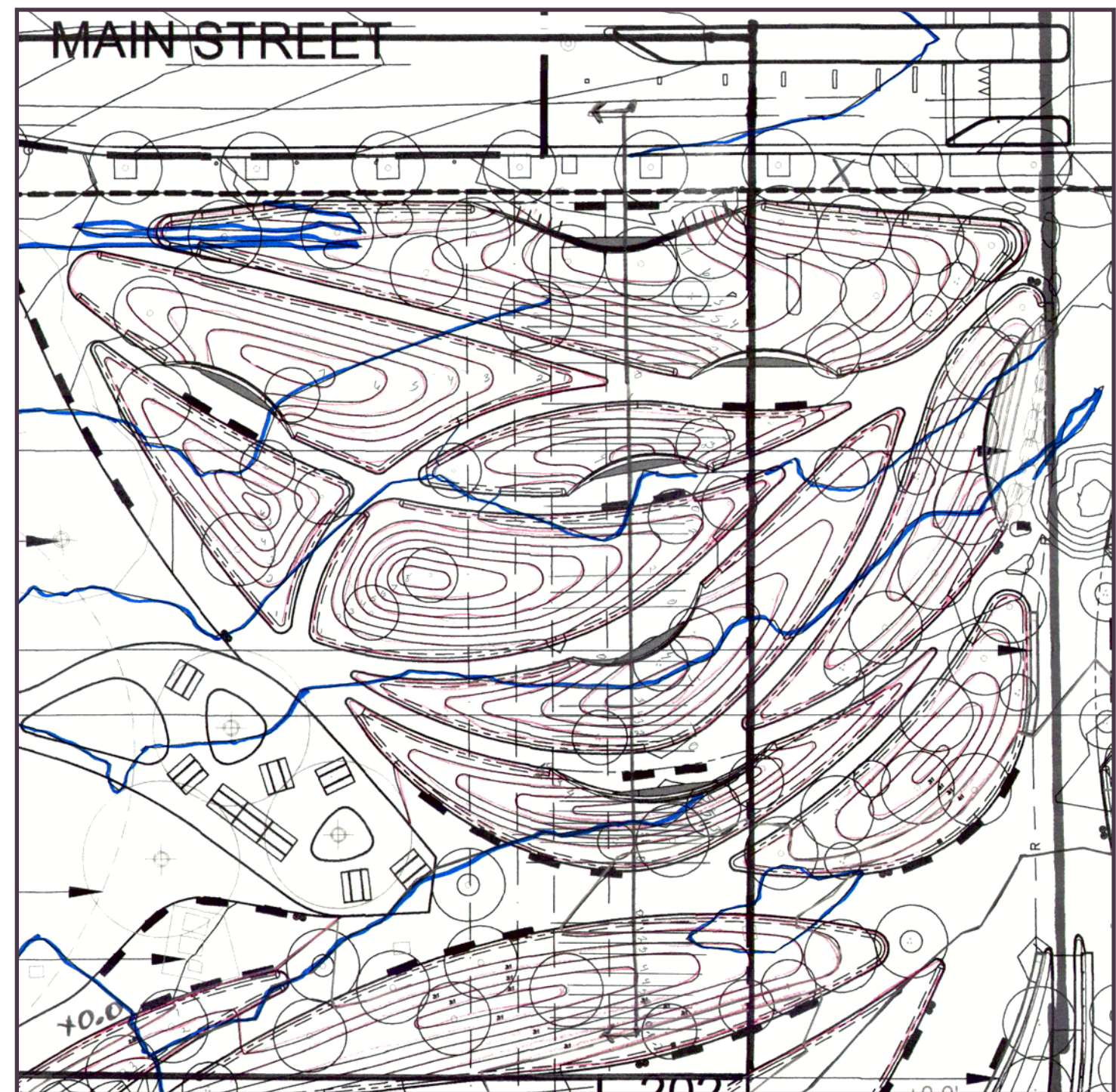
## Perspective



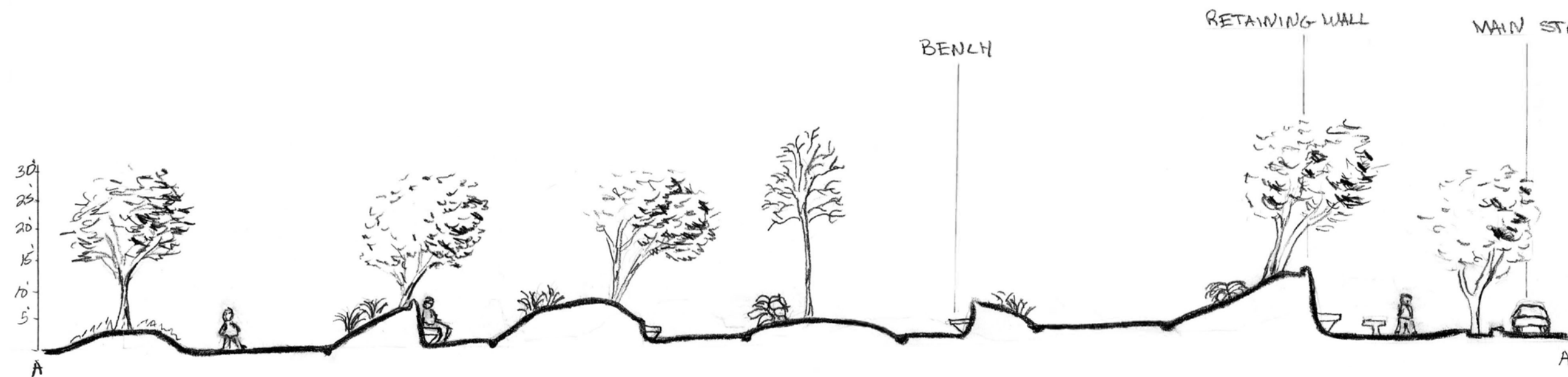


# First Graphics

## Section



Tracing contours aided in the study of Tongva Park's topography

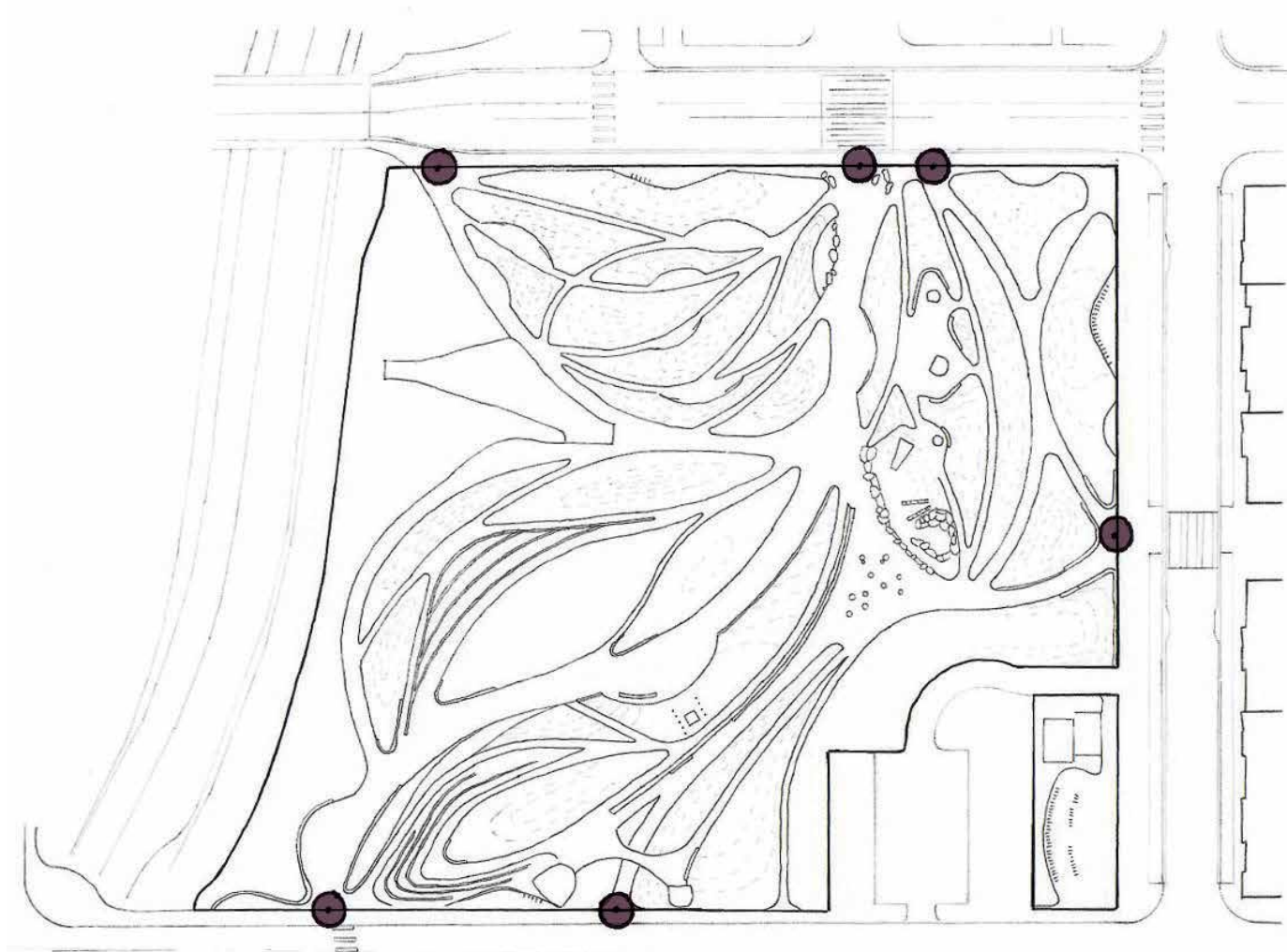


0' 10' 20' 40'  
1" = 20'-0"



# Site Analysis

## Access

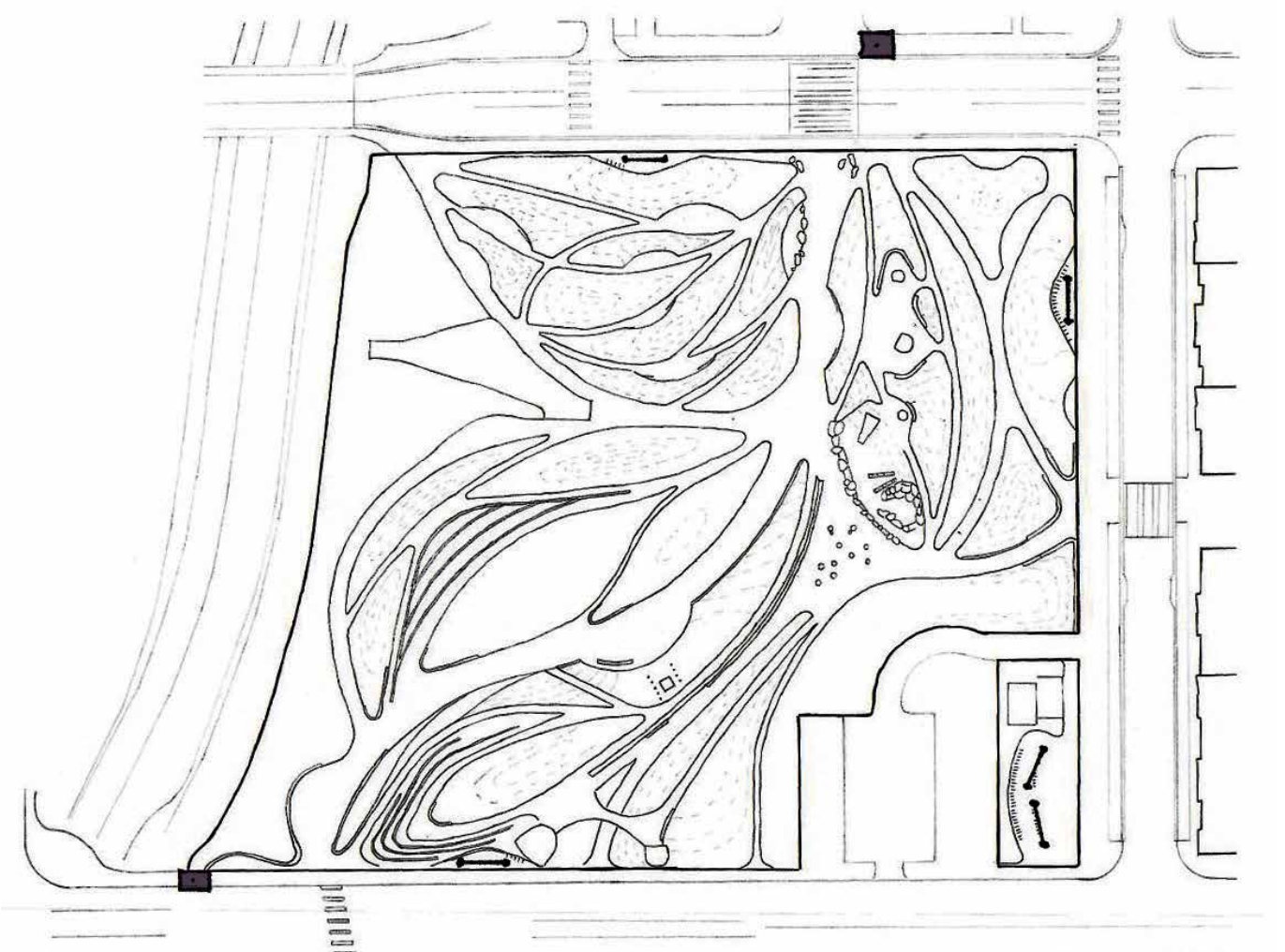


● Access point



0' 60' 120' 240'  
1" = 120'-0"

## Transit



┌─┐ Bike rack  
■ Bus stop

## Walls



## Pedestrian Circulation



→ Primary    - - - - - Secondary    . . . . . Tertiary



# Site Analysis

## Runoff



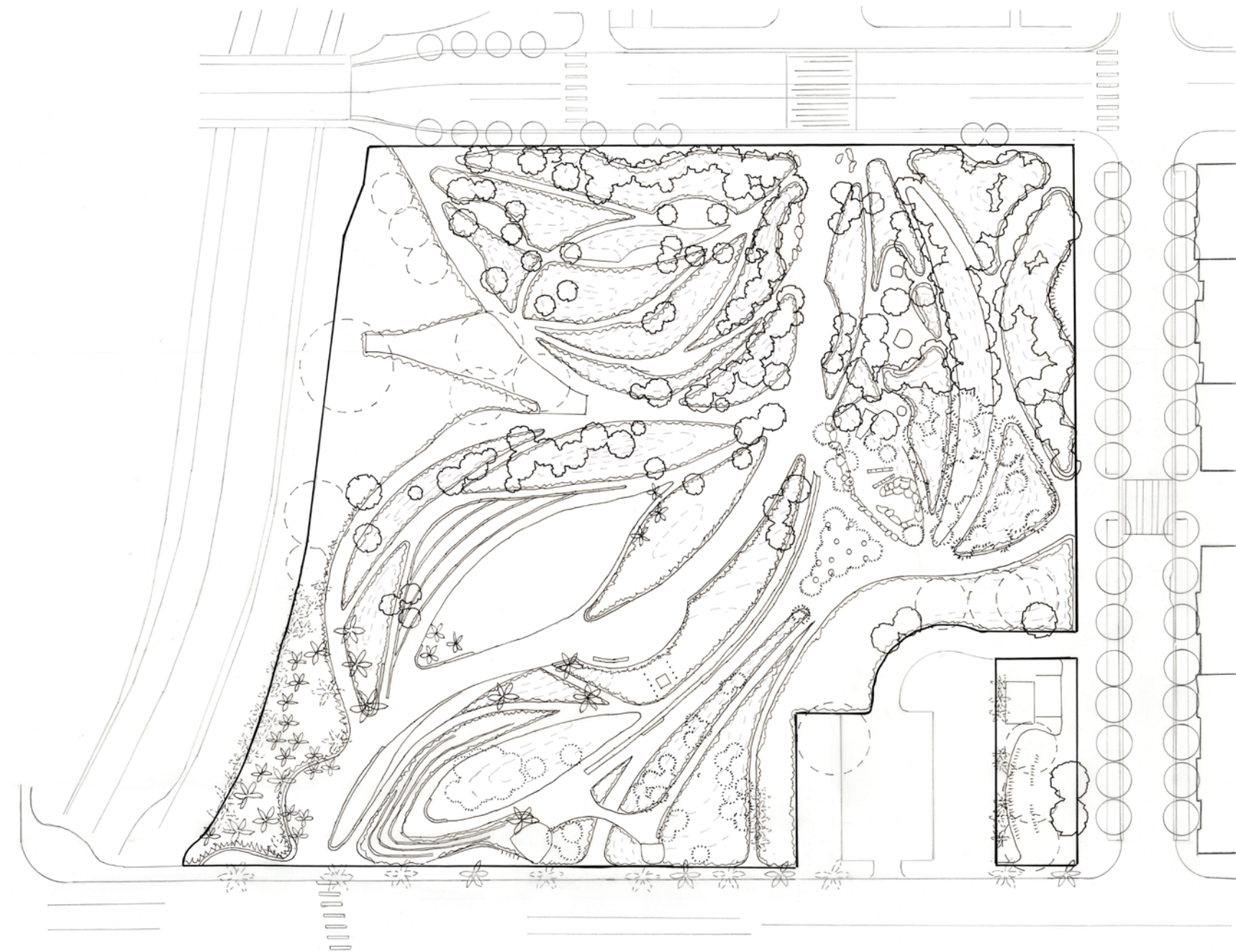
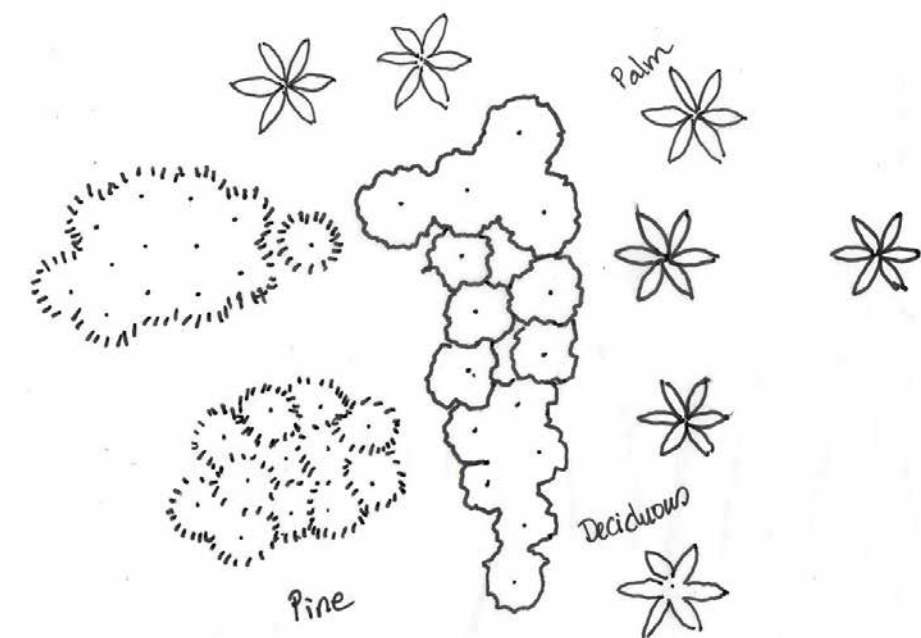
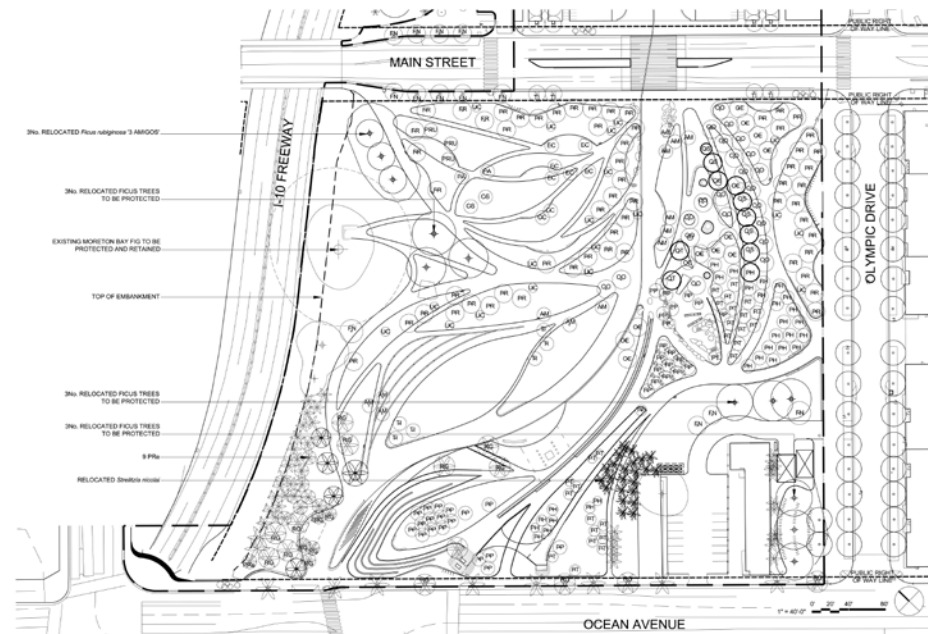
## Tree Canopy



Retaining wall and tree canopy



# Illustrative Plan



picnic area

Moreton Bay fig

water feature

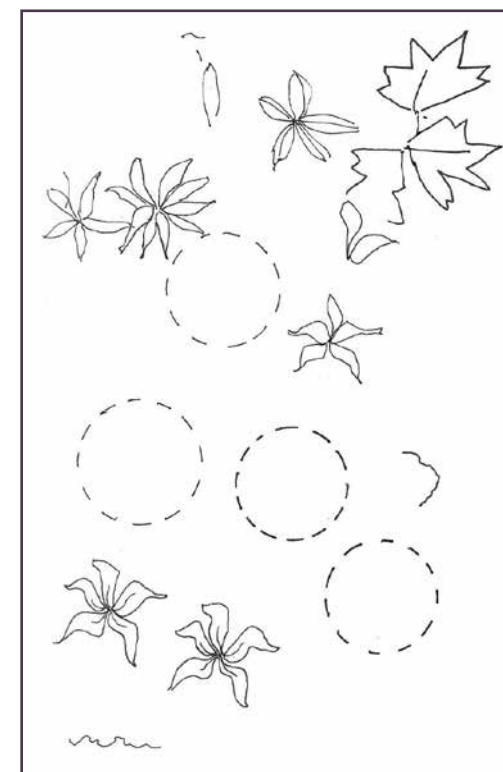
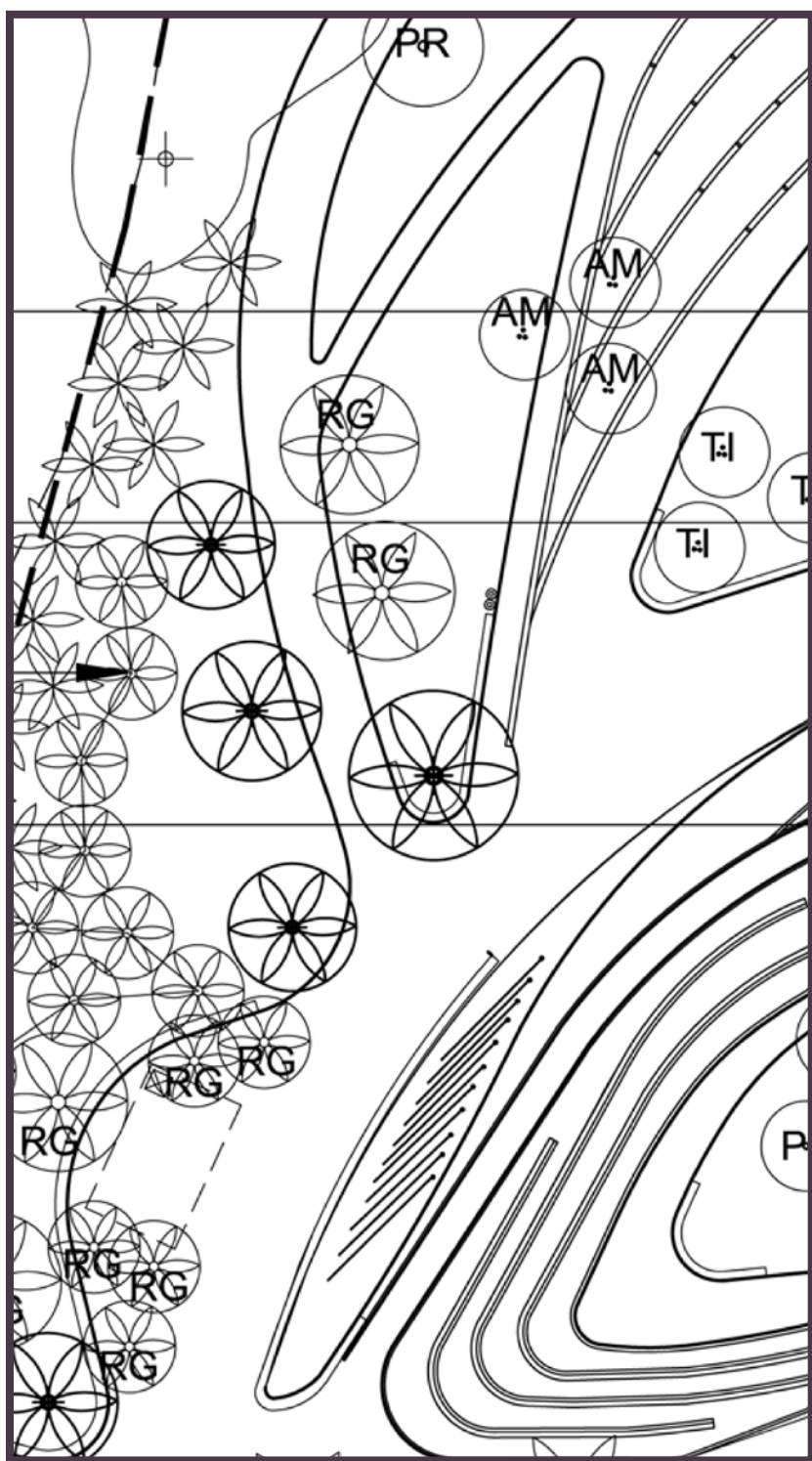
bike rack

playground

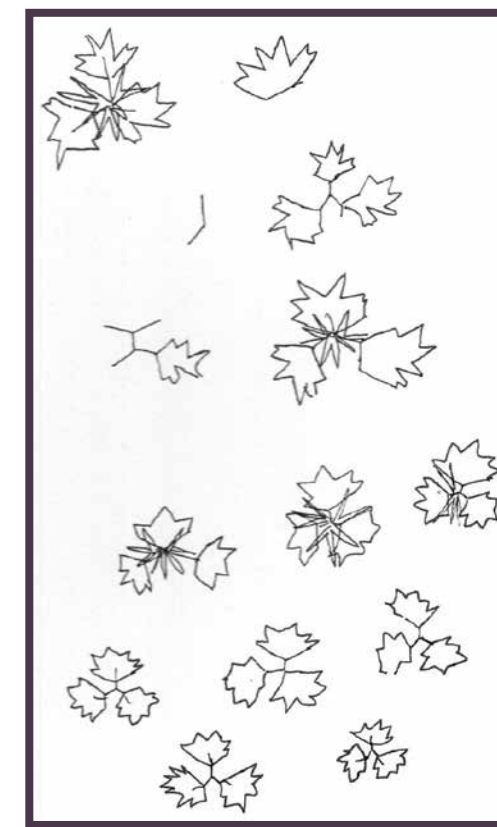
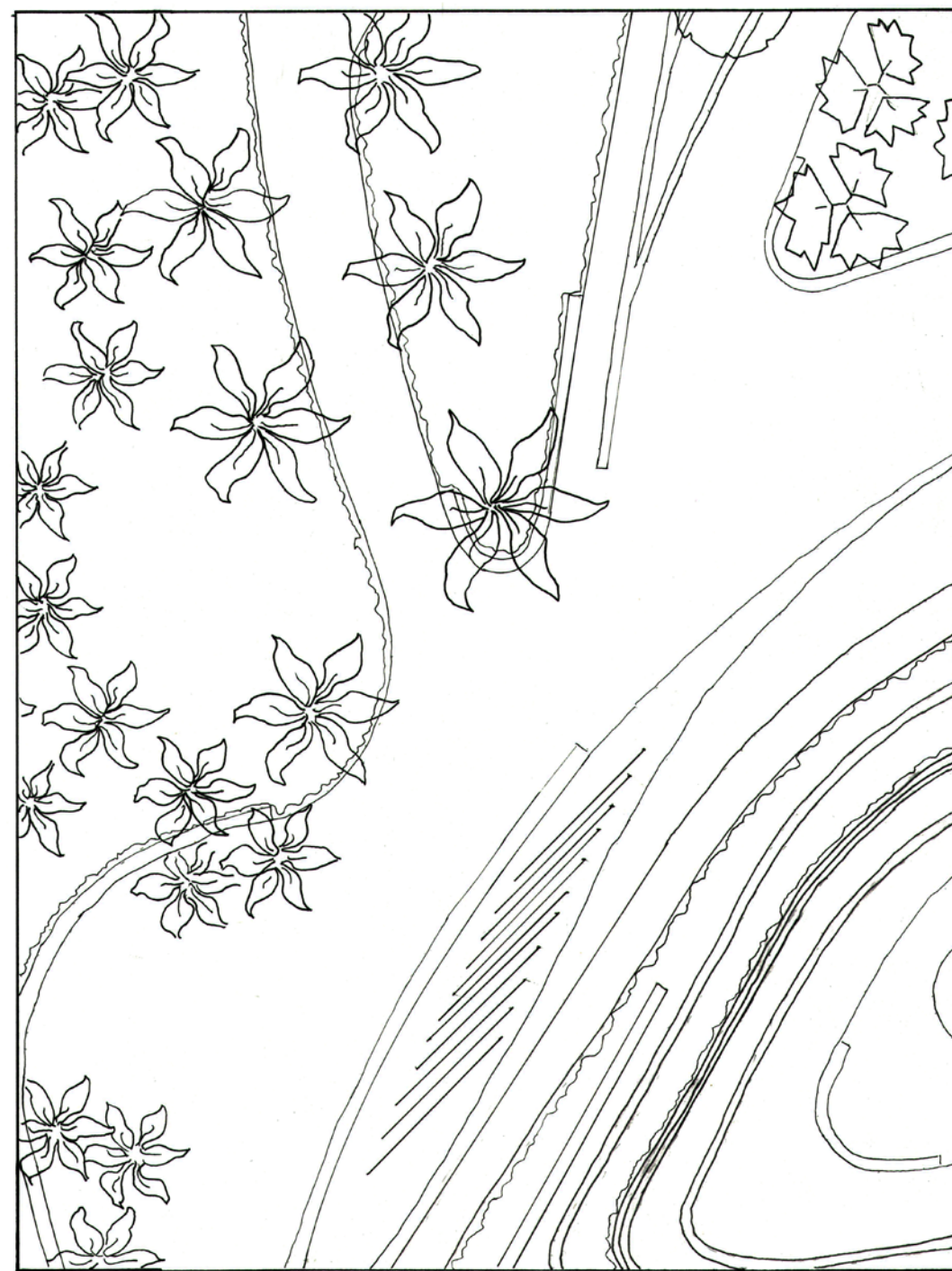




# The Enlargement



Initial tree canopy sketches



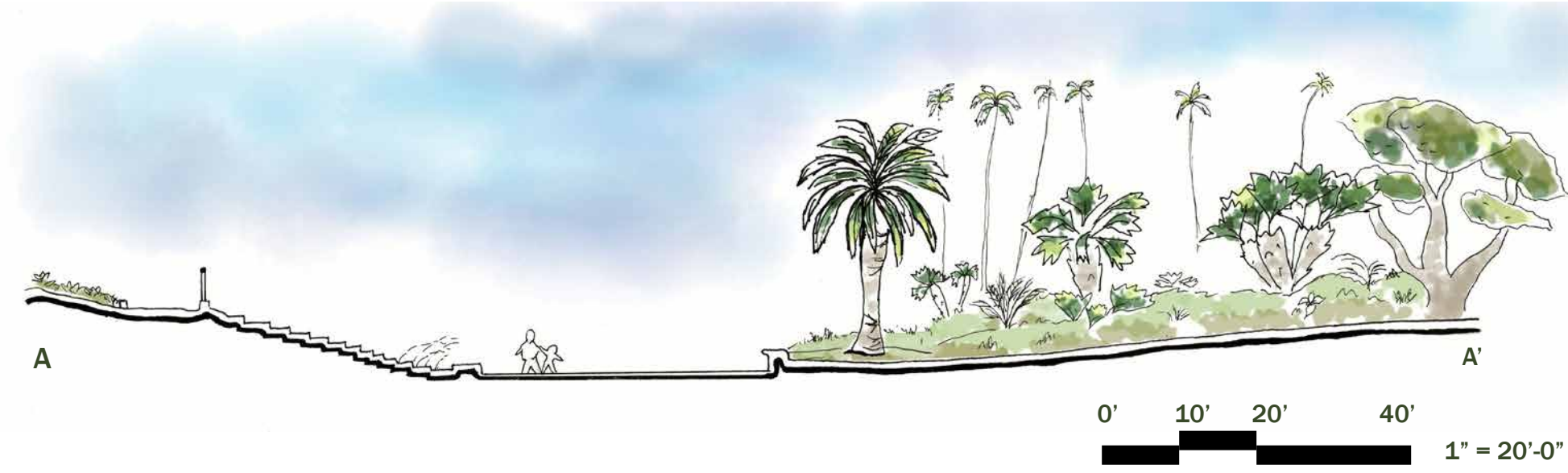
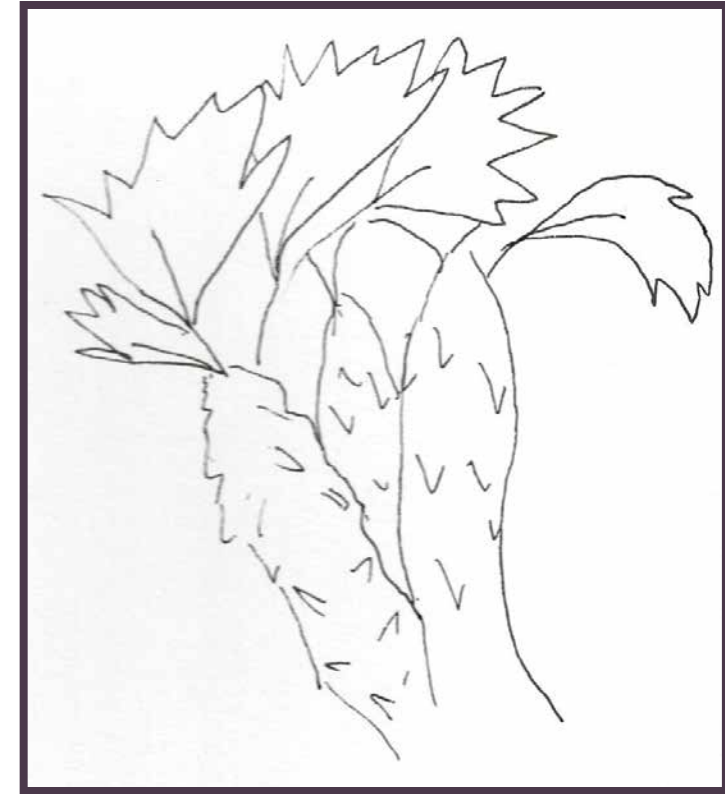
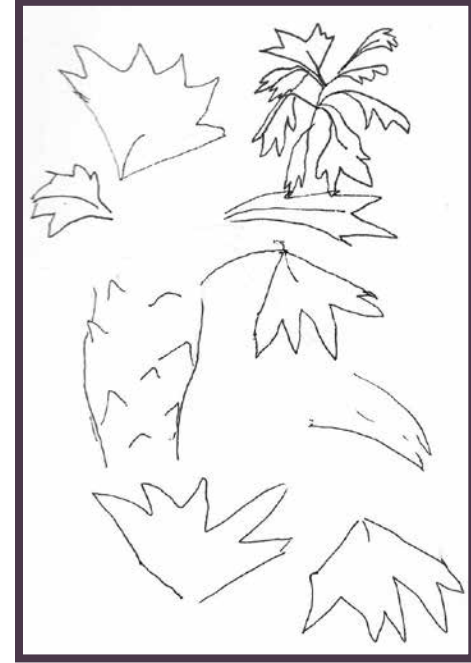
Initial tree canopy sketches



0' 10' 20' 40'  
1" = 20'-0"



# The Section



# Perspectives





# Plant Palette - Trees



Moreton Bay fig, *Ficus macrophylla*



Strawberry tree, *Arbutus marina*



Windmill palm, *Trachycarpus fortune*



Island oak, *Quercus tomentella*



Western sycamore, *Platanus racemosa*



Floss silk tree, *Ceiba speciosa*



Olive tree, *Olea europea*



Aleppo pine, *Pinus halepensis*



Cork oak, *Quercus suber*



Weeping fig, *Ficus benjamina*



Senegal date palm, *Phoenix reclinata*

# Materials



Benches



LED Lights



Boulders and fountain



Overlook



Picnic tables



Street lamp



Playground



Sculpture



Benches



Restroom



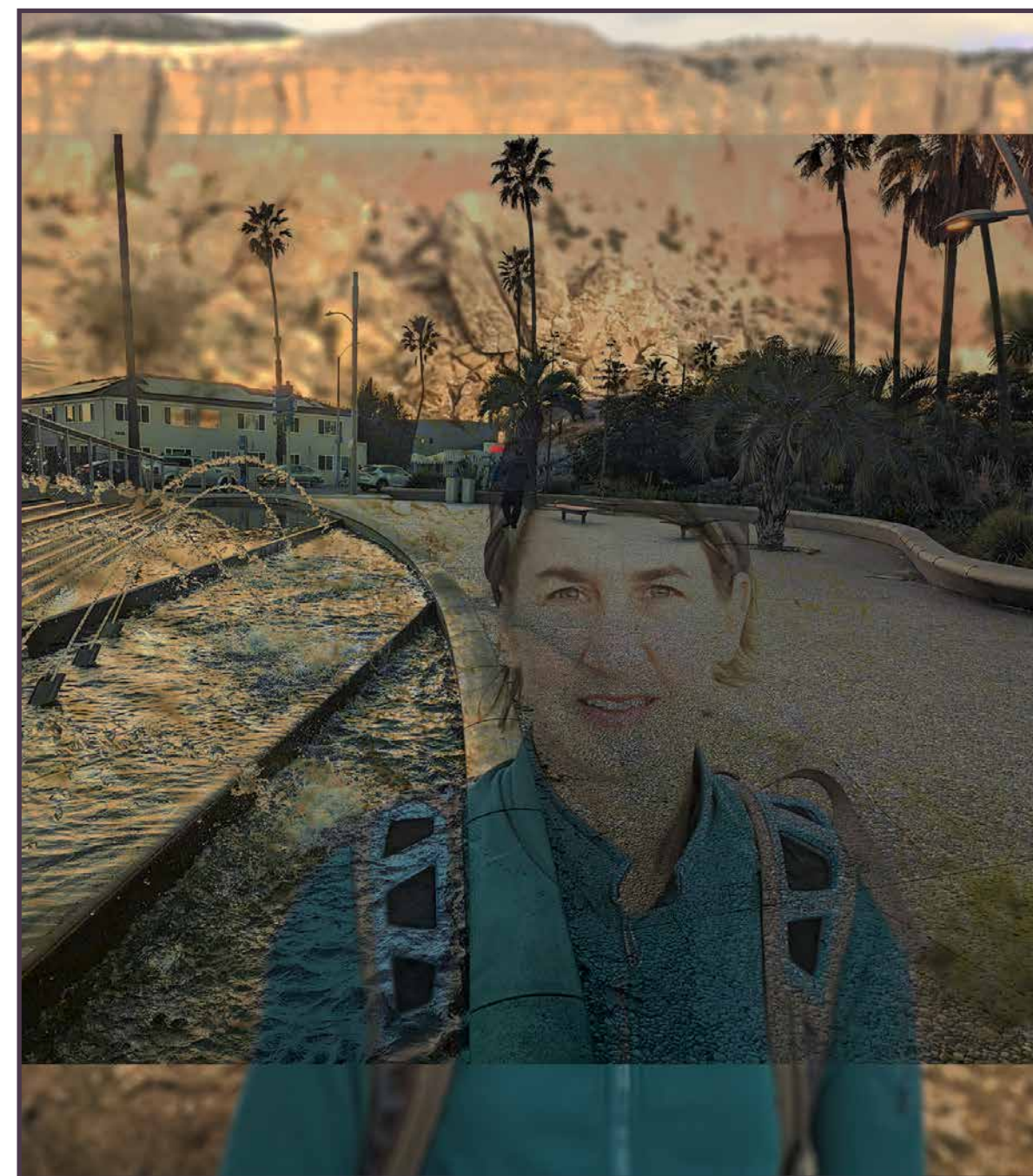
Retaining walls



Water feature



## Biography



I am an environmental scientist, landscape ecologist, amateur plein air painter, and aspiring landscape architect. My goal is to use my knowledge of the natural world to create sustainable and adaptive landscapes.

## Acknowledgements



I thank my UCLA Extension Design Graphics instructors: David Squires, Rebecca Schwaner, and Laura Razo, and all the DG classmates.

### References:

Page 2: Aerial image: Google Earth

Page 3: Franz Arthur Bischoff, Arroyo Seco; Christopher Burkett, Desert Arroyo; Wayne Theibaud, River

Page 4: Tongva Park and Ken Genser Square | 2018 ASLA Professional Awards. [https://www.asla.org/2018awards/455654-Tongva\\_Park\\_And\\_Ken\\_Genser.html](https://www.asla.org/2018awards/455654-Tongva_Park_And_Ken_Genser.html)

Page 6: Longcore, T. and P. J. Ethington, eds. 2023. Mapping Los Angeles Landscape History: The Indigenous Landscape. Report to the John Randolph Haynes and Dora Haynes Foundation. Spatial Sciences Institute, University of Southern California, Los Angeles. Available at: Los Angeles Landscape History – Historical Ecology of the LA Region ([landscapehistory.org](http://landscapehistory.org))

Page 7: [laspilitas.com](http://laspilitas.com); The Dunes Are Alive Along The Santa Monica Coast | LAist; National Park Service; U.S. National Archives and Records Administration; Google Earth; City of Santa Monica

Page 15: Late to the Garden Party, Blog by Kris Peterson, Late to the Garden Party: Tongva Park ([krispgarden.blogspot.com](http://krispgarden.blogspot.com))

Page 16: Tongva Park planting plan

Page 18: Tongva Park planting plan

Page 22: Photos from SeleTree: A Tree Selection Guide. SeleTree: A Tree Selection Guide ([calpoly.edu](http://calpoly.edu))

Page 23: Late to the Garden Party, Blog by Kris Peterson, Late to the Garden Party: Tongva Park ([krispgarden.blogspot.com](http://krispgarden.blogspot.com))



