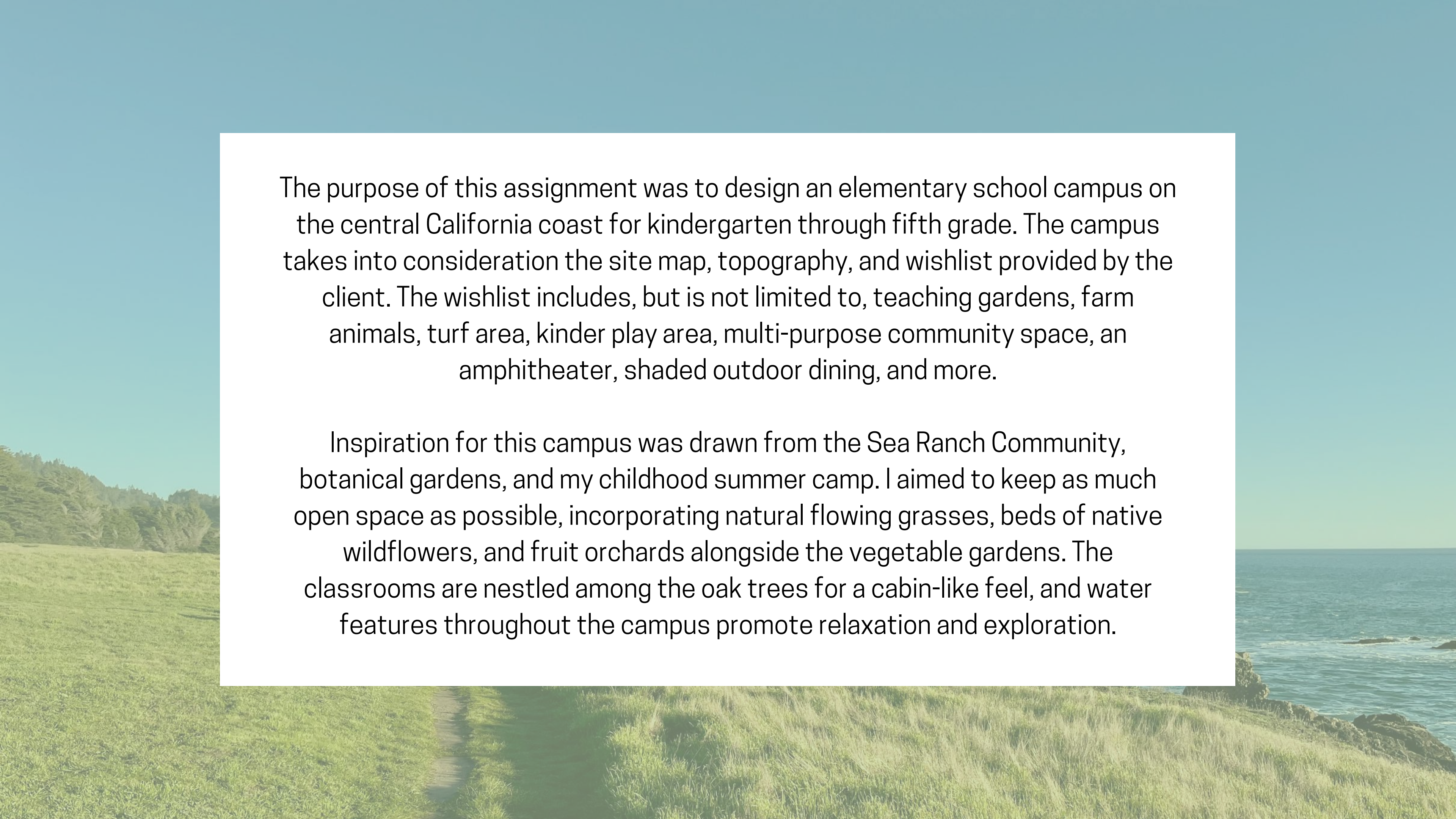


Coastal Oak Academy

by KELSEY WOODWORTH

UCLA Extension | Steve Lang
Intro to Landscape Design Professions
Summer 2024

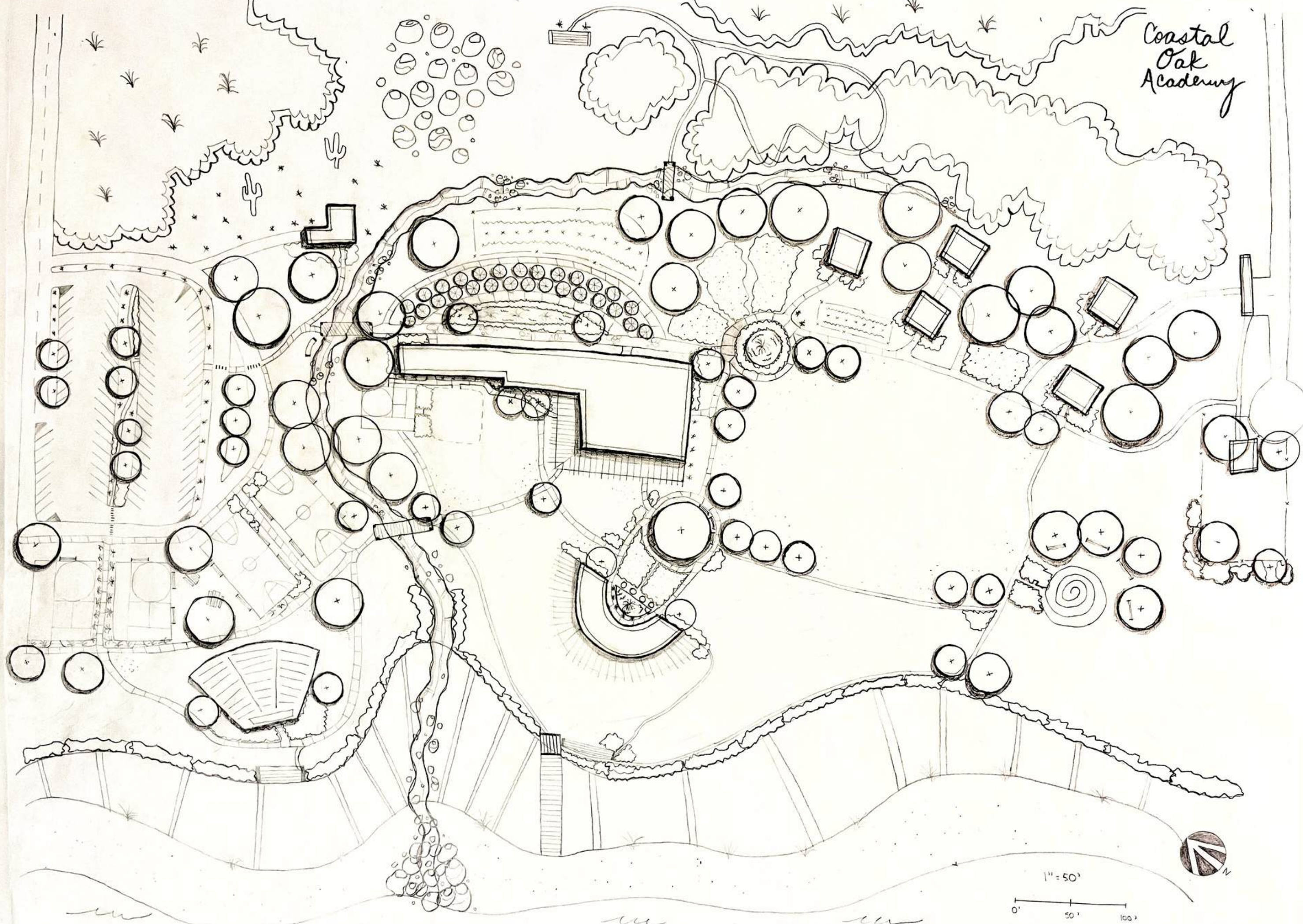




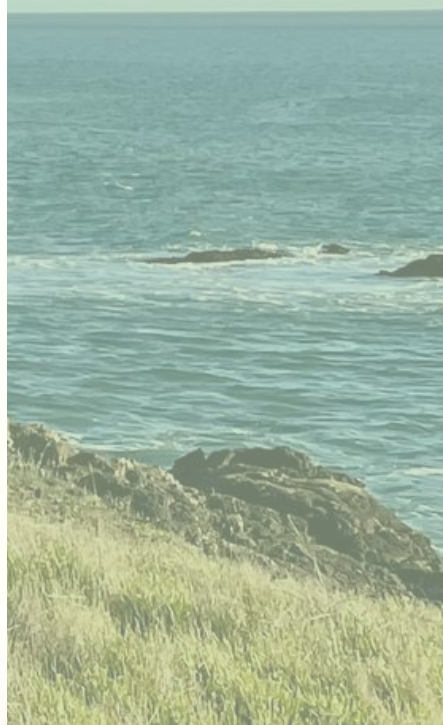
The purpose of this assignment was to design an elementary school campus on the central California coast for kindergarten through fifth grade. The campus takes into consideration the site map, topography, and wishlist provided by the client. The wishlist includes, but is not limited to, teaching gardens, farm animals, turf area, kinder play area, multi-purpose community space, an amphitheater, shaded outdoor dining, and more.

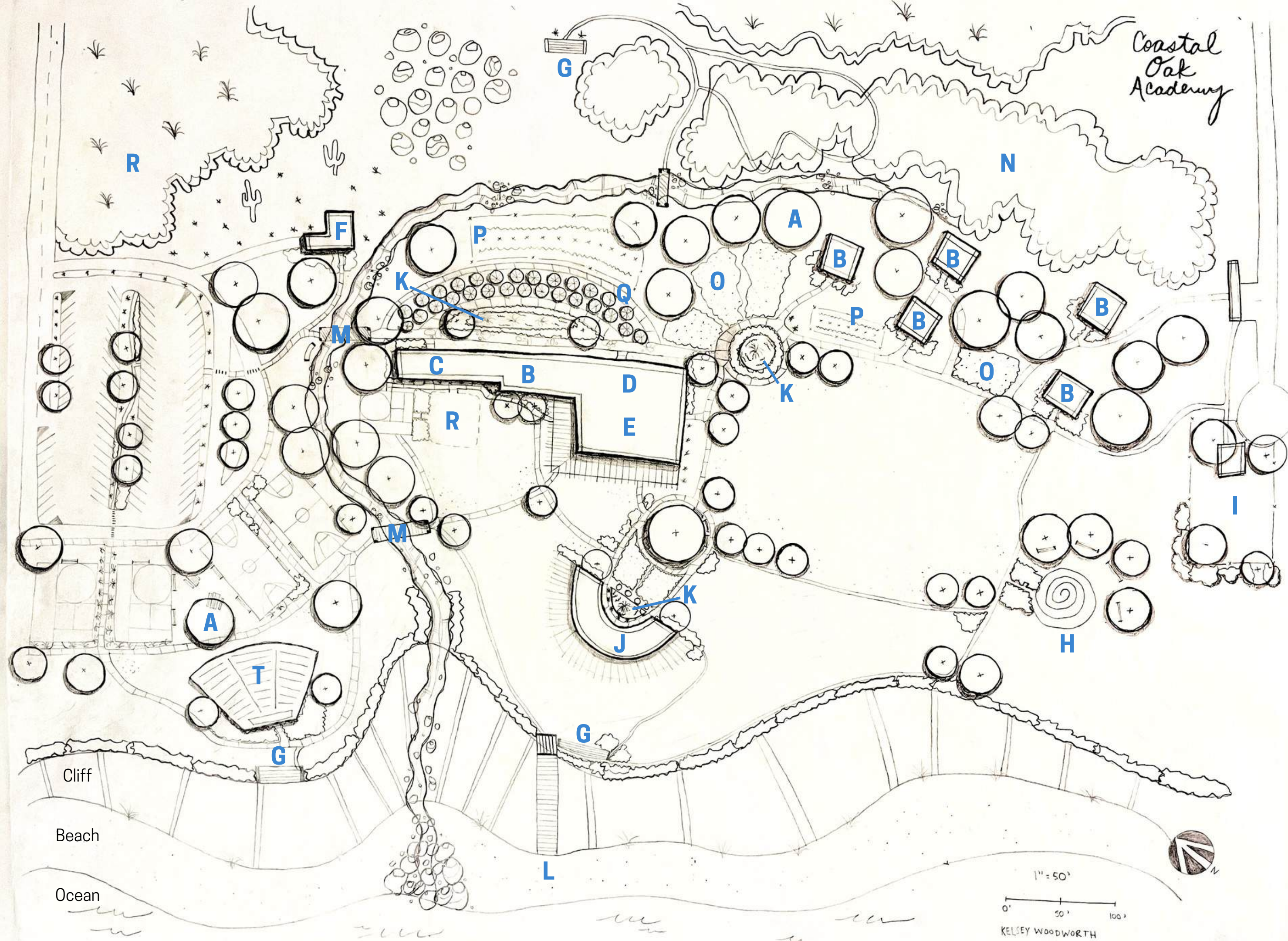
Inspiration for this campus was drawn from the Sea Ranch Community, botanical gardens, and my childhood summer camp. I aimed to keep as much open space as possible, incorporating natural flowing grasses, beds of native wildflowers, and fruit orchards alongside the vegetable gardens. The classrooms are nestled among the oak trees for a cabin-like feel, and water features throughout the campus promote relaxation and exploration.

Coastal
Oak
Academy

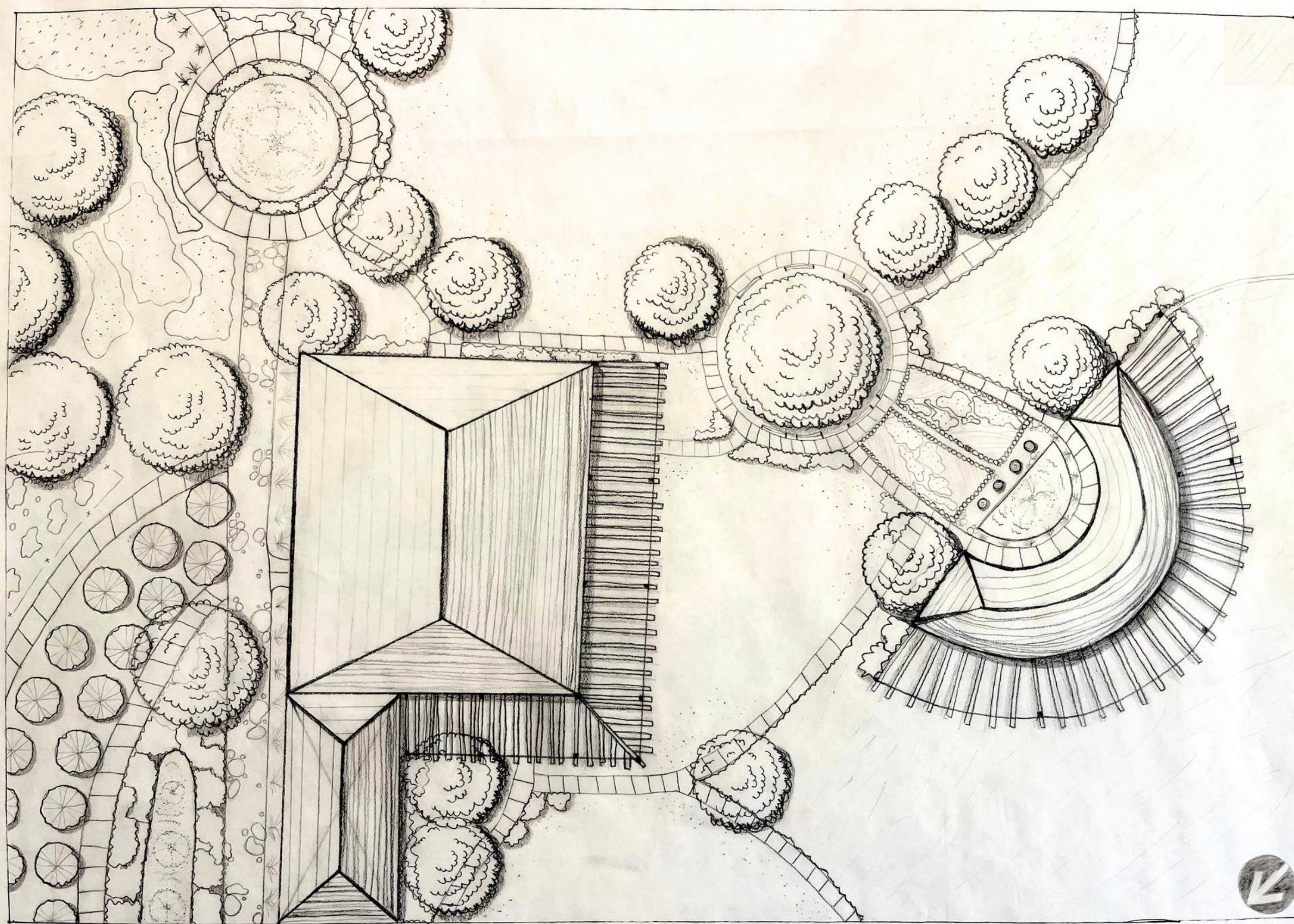


1" = 50'
0' 50' 100'
KELSEY WOODWORTH



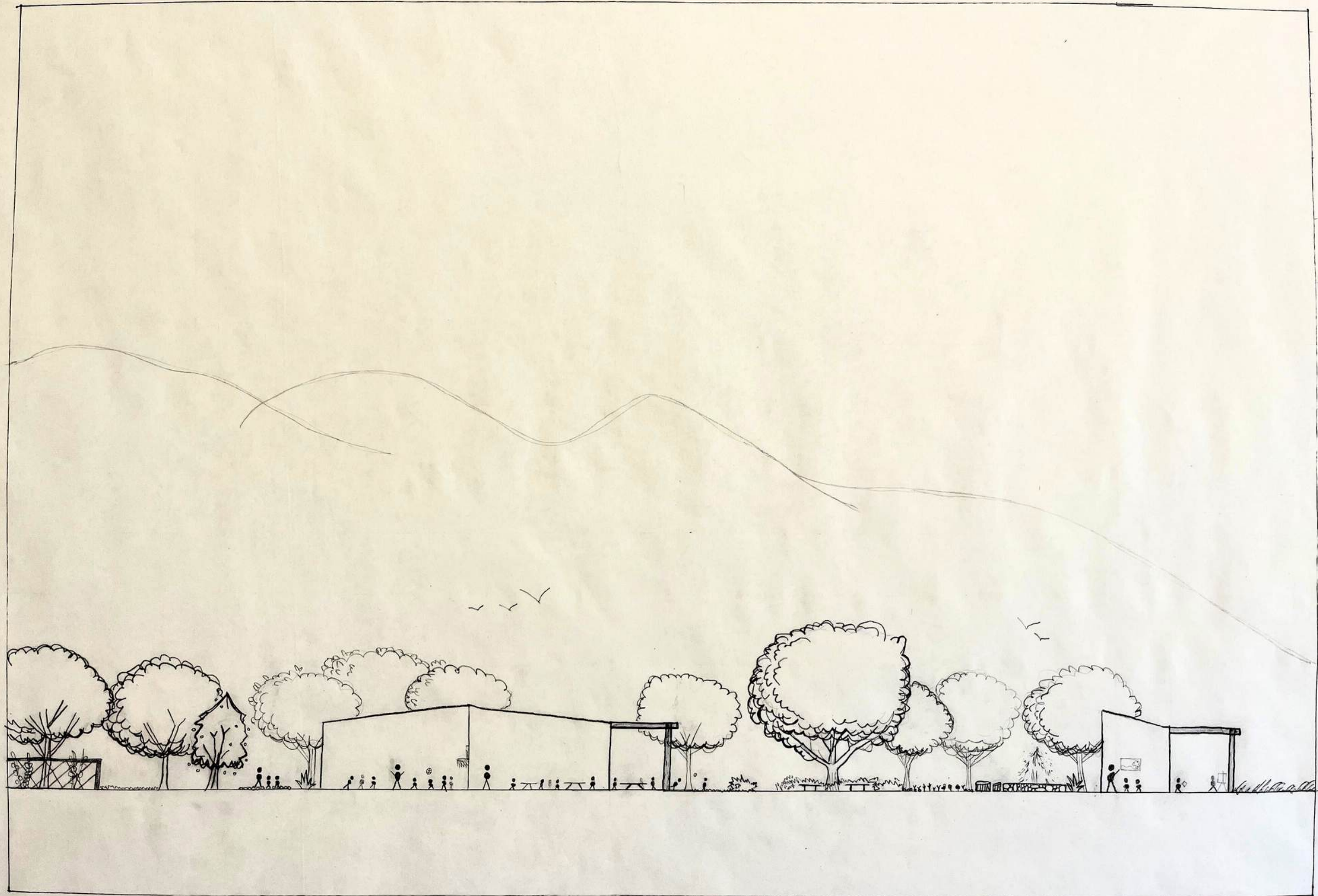


- A - Oak Trees
- B - Classrooms
- C - Administration
- D - Cafeteria
- E - Multi-Purpose
- F - Caretaker's Cottage
- G - Lookout Point
- H - Labyrinth
- I - Farm Animals
- J - Art Studio + Library
- K - Water Feature
- L - Beach Access
- M - Bridge
- N - Eucalyptus Grove
- O - Flower Garden
- P - Vegetable Garden
- Q - Fruit Orchard
- R - Chaparral Hills
- S - Kinder Play Area
- T - Amphitheater



1" = 20'
0' 20' 40'

KELSEY WOODWORTH



1"=20'
0' 20' 40'
KELSEY WOODWORTH





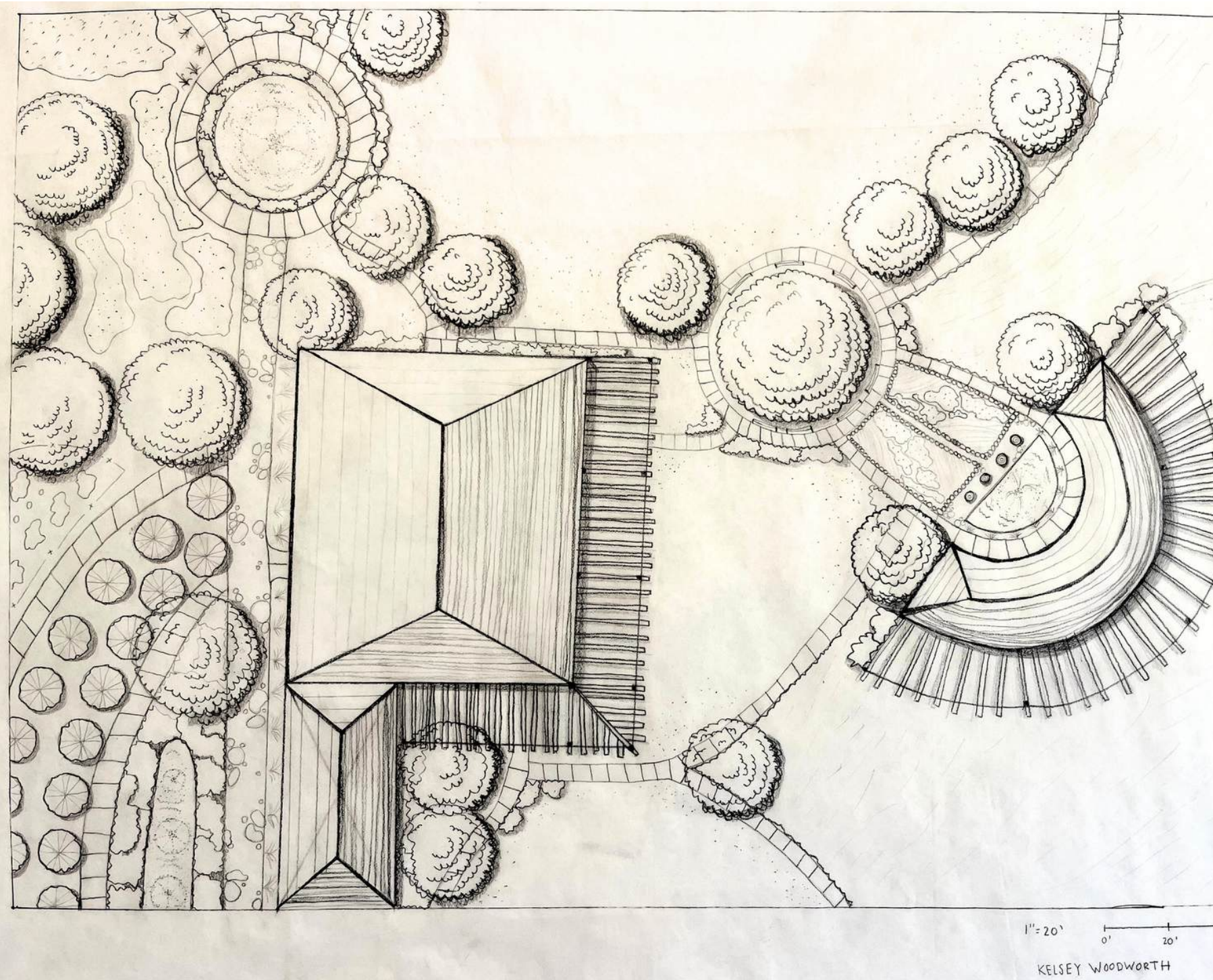












Thank you!