

MacGowan Hall

Courtyard of Theaters

Josep Ferrer Miranda
Landscape Design 1 - Winter 2024
Instructor: Steven Chavez





Outside view of the courtyard revealing forms through the brise soleil.



Interior view of courtyard with raised planters, decorative metal work, restroom access, trees and floor lighting.



Electrical box with exposed wires.



(Potentially) disused ticket window.



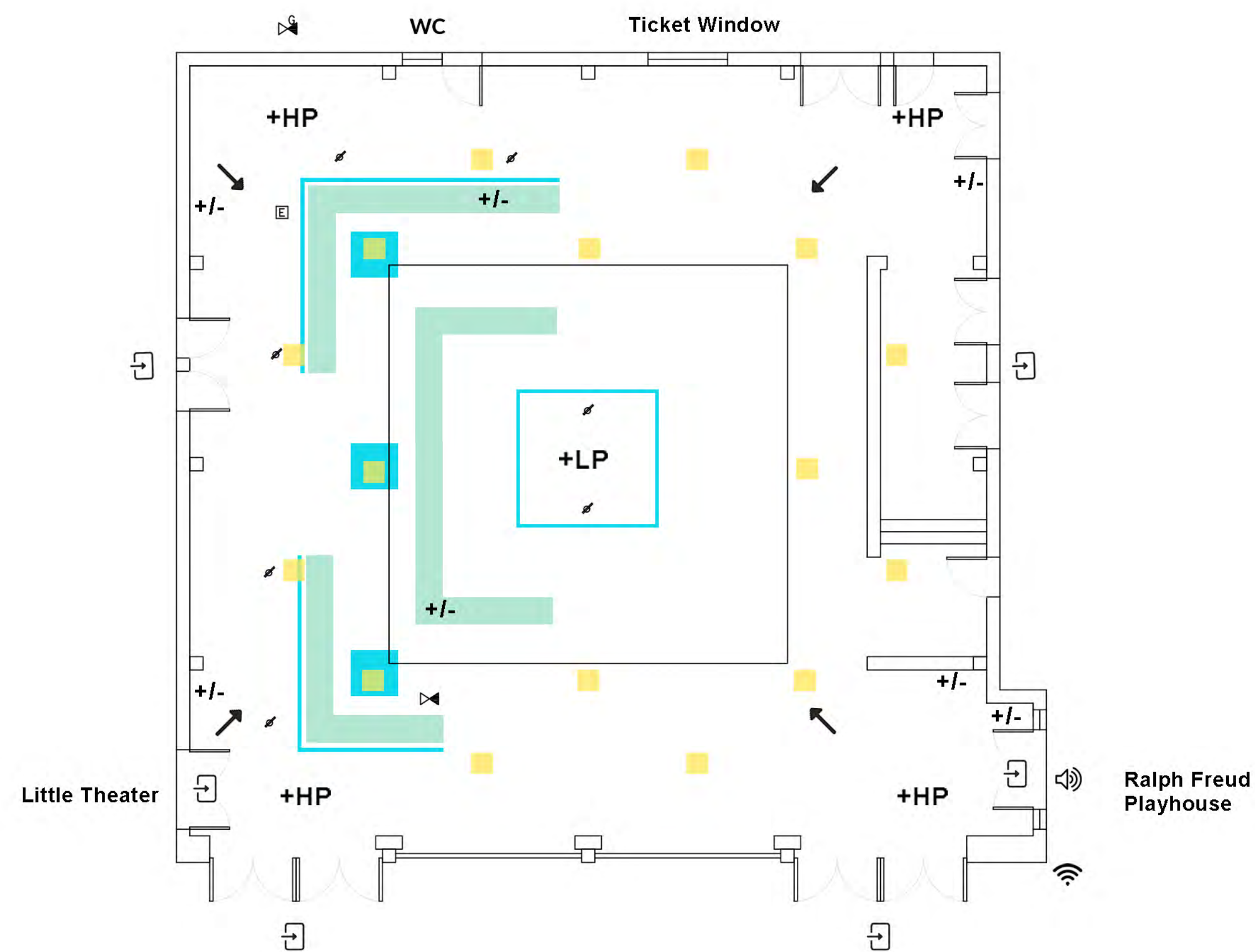
Brise soleil shadow on the east wall at dusk.



Little Theater entrance.

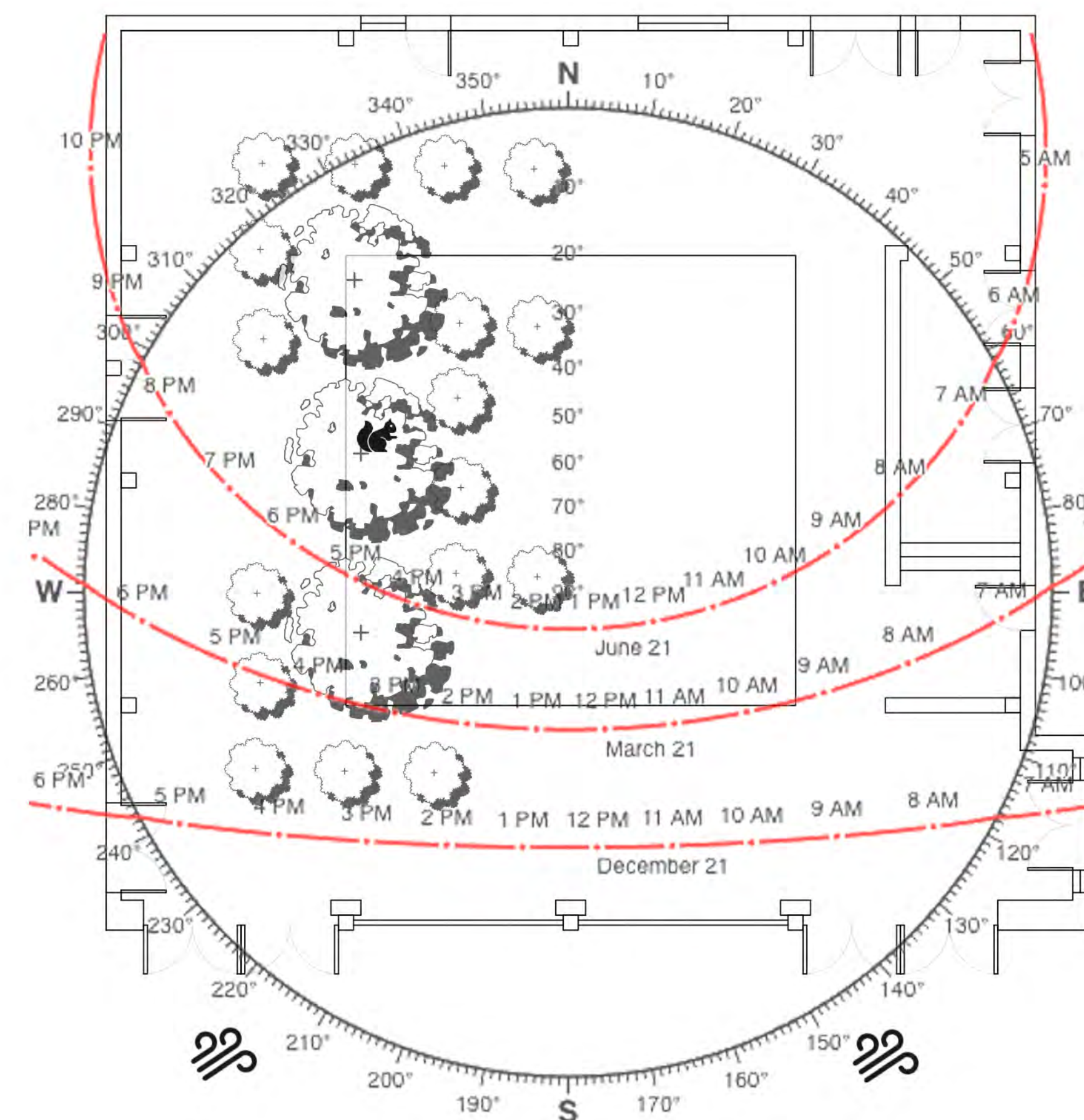
BUILT ELEMENTS

- | | | |
|------------------|-----------------------|---------------------------|
| ⊠ Water Valve | +HP High Point | ⊠ Electrical Box |
| ⊠ Gas Valve | +LP Low Point | 📶 Router |
| ⊠ Sprinkler Head | 🔊 Audio Speaker | WC Restroom |
| ☐ Ceiling light | +/- Electrical Outlet | ⊠ Primary Entrance / Exit |
| ▭ Raised planter | ▭ Drainage | ➔ Water Flow |



NATURAL ELEMENTS

- | | |
|-------------------|-----------------------------------|
| 🌳 Tree | Avg. monthly precipitation: 1.18" |
| 🌿 Shrub | USDA Hardiness Zone 10b |
| 🐿 Squirrel nest | Sunset Climate Zone 23 |
| 🌬 Prevailing Wind | Sun Path |



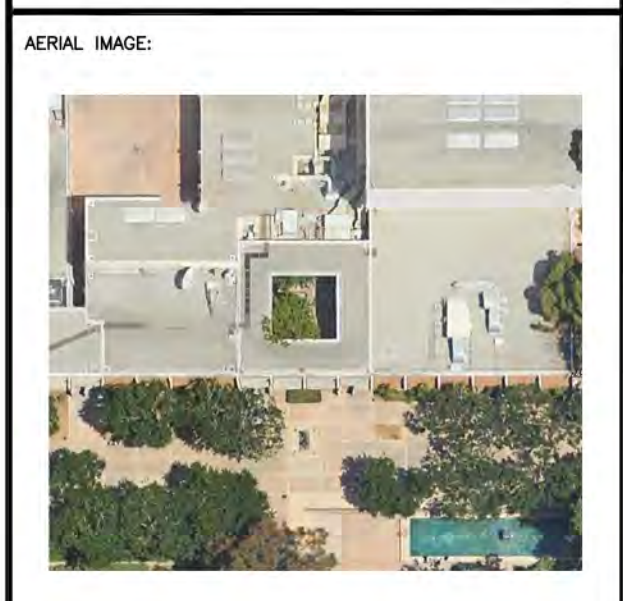
STUDENT NAME:
Josep Ferrer Miranda

COURSE:
Landscape Design 1

INSTRUCTOR:
Steven Chavez

SITE NAME AND ADDRESS:
UCLA Courtyard of Theaters at
Macgowan Hall
245 Charles E Young Dr E,
Los Angeles, CA 90095

DRAWING TITLE:
Site Inventory

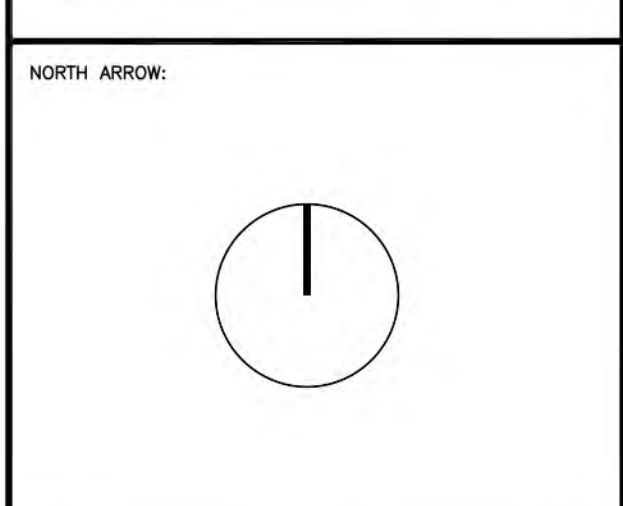


DRAWING NOTES:
The courtyard features quality materials, particularly stone and metal.

The space has been significantly modified since opening in the 1960's, including a major remodel in the 1990's.

Previously defined by the massive Anna Freud sculpture "Tower of Masks", the character of the space changed when the artwork was removed after toppling over in the Northridge earthquake.

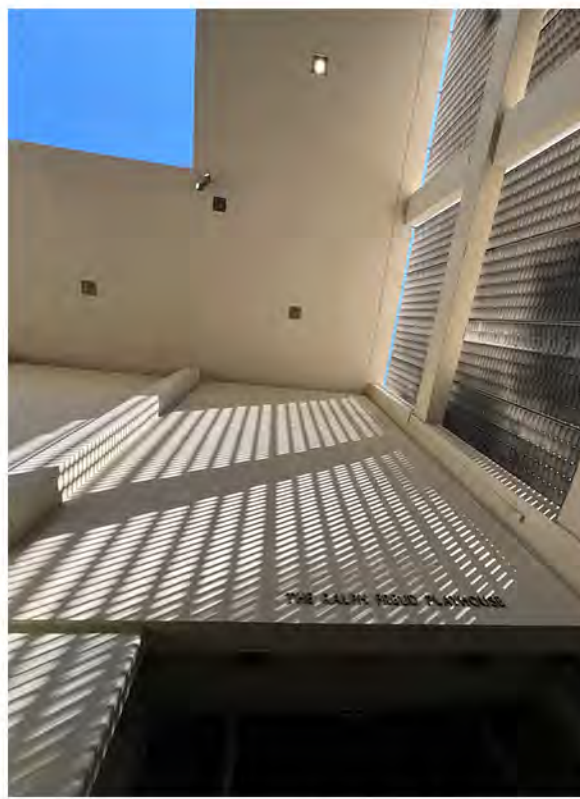
A wind eddy and cold/cool temperatures have been observed at the site, which is protected from the sun at all times.



SCALE BAR:
0' 2' 4' 8' 16'

DRAWING SCALE:
1/8" = 1'

SHEET NUMBER: L-1
SHEET NUMBER IN SET: 1/5



Limited natural light.



Many doors opening in.



Small space, busy layout.



Rebirth from decay.



Metal frames for green walls.



Low light plant material.

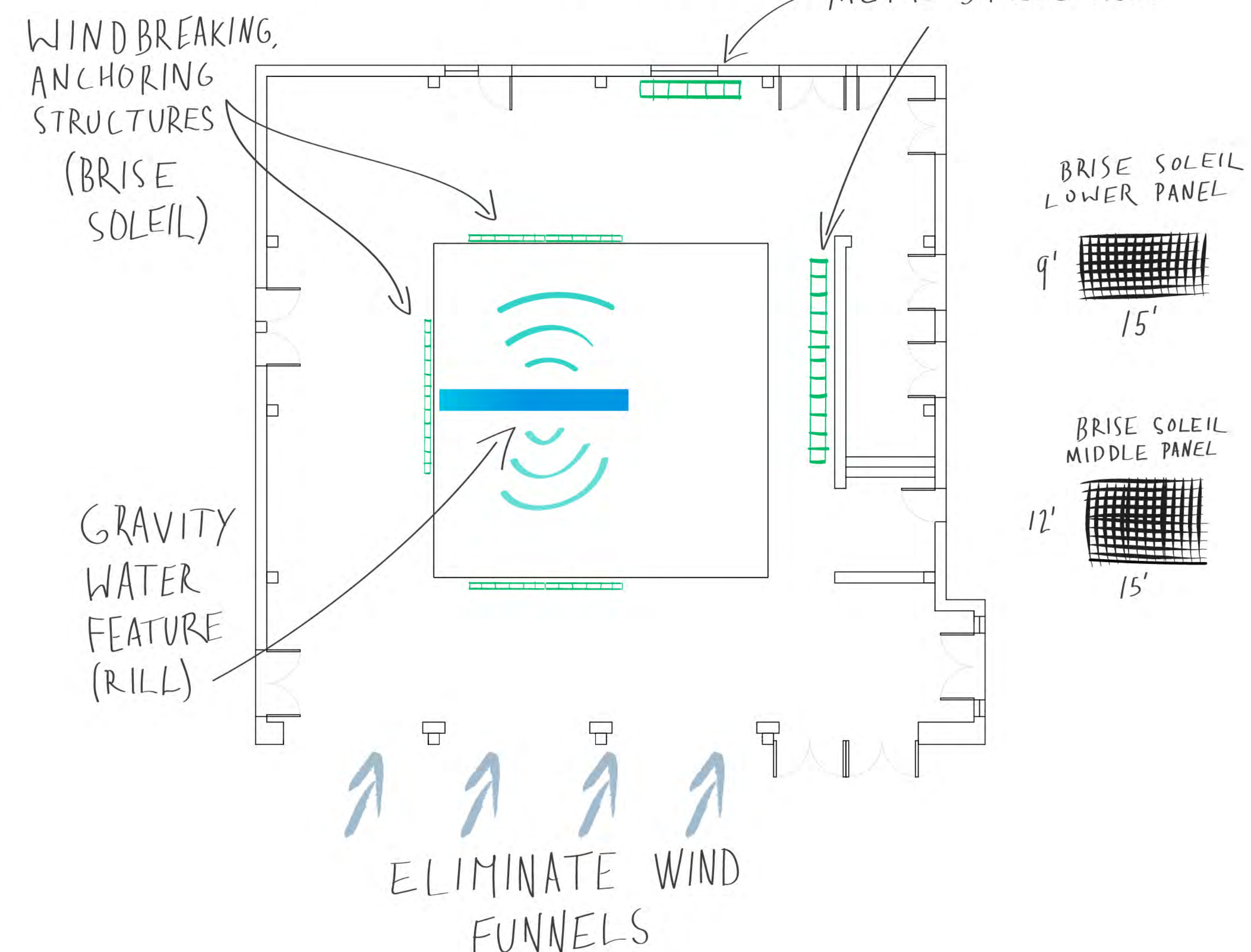
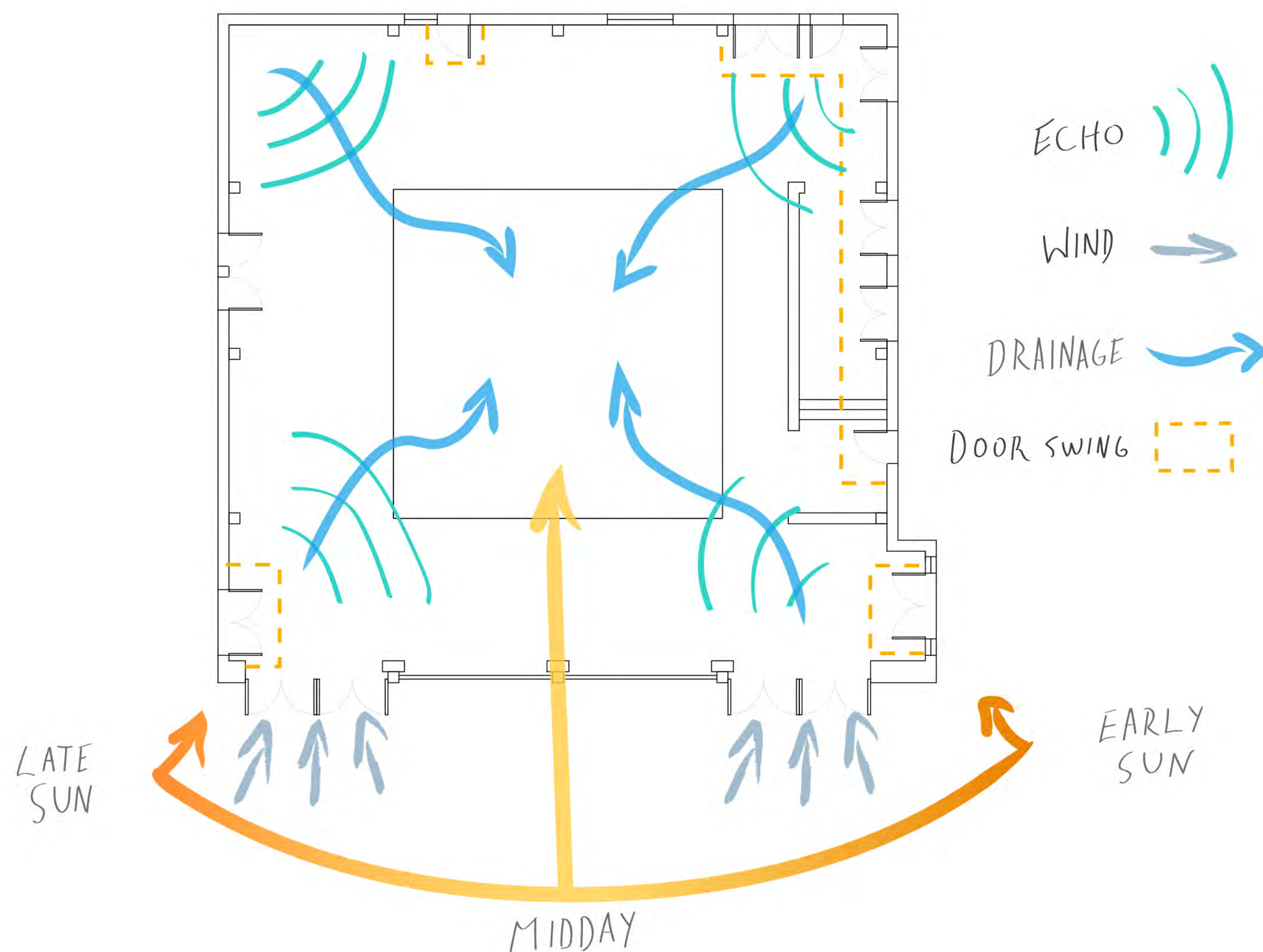
SITE CONSTRAINTS

- COLD
- DARK - LOW SUNLIGHT, MIDDAY & DAWN/DUSK
- SMALL - LIMITED SPACE
- WIND EDDY - FUNNELING?
- ECHO
- MANY ENTRANCES/DOORS - DOOR SWING AREAS

SITE OPPORTUNITIES

- COOL
- SHADED > SUMMER REFUGE
- INTIMATE
- QUALITY MATERIALS - GRANITE, METAL
- SHADE LOVING

UNDERSTORY PLANTS - VINES ON EXISTING METAL STRUCTURES



STUDENT NAME:
Josep Ferrer Miranda

COURSE:
Landscape Design 1

INSTRUCTOR:
Steven Chavez

SITE NAME AND ADDRESS:
UCLA Courtyard of
Theaters at Macgowan
Hall

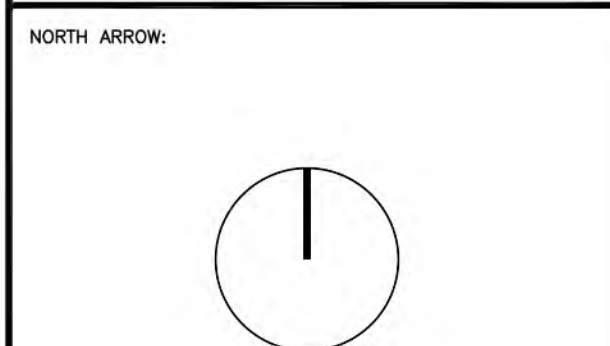
245 Charles E Young Dr E,
Los Angeles, CA 90095

DRAWING TITLE:
Site Inventory



DRAWING NOTES:
Quality building materials can be re-used and reconfigured, giving the space new life while preserving its character - and lessening the project's environmental footprint.

Existing metal structures can serve as trellises for green walls, and the beautiful steel brise soleil can be removed and placed inside the site, where they can serve as green walls, windbreakers and even elevated catwalks.

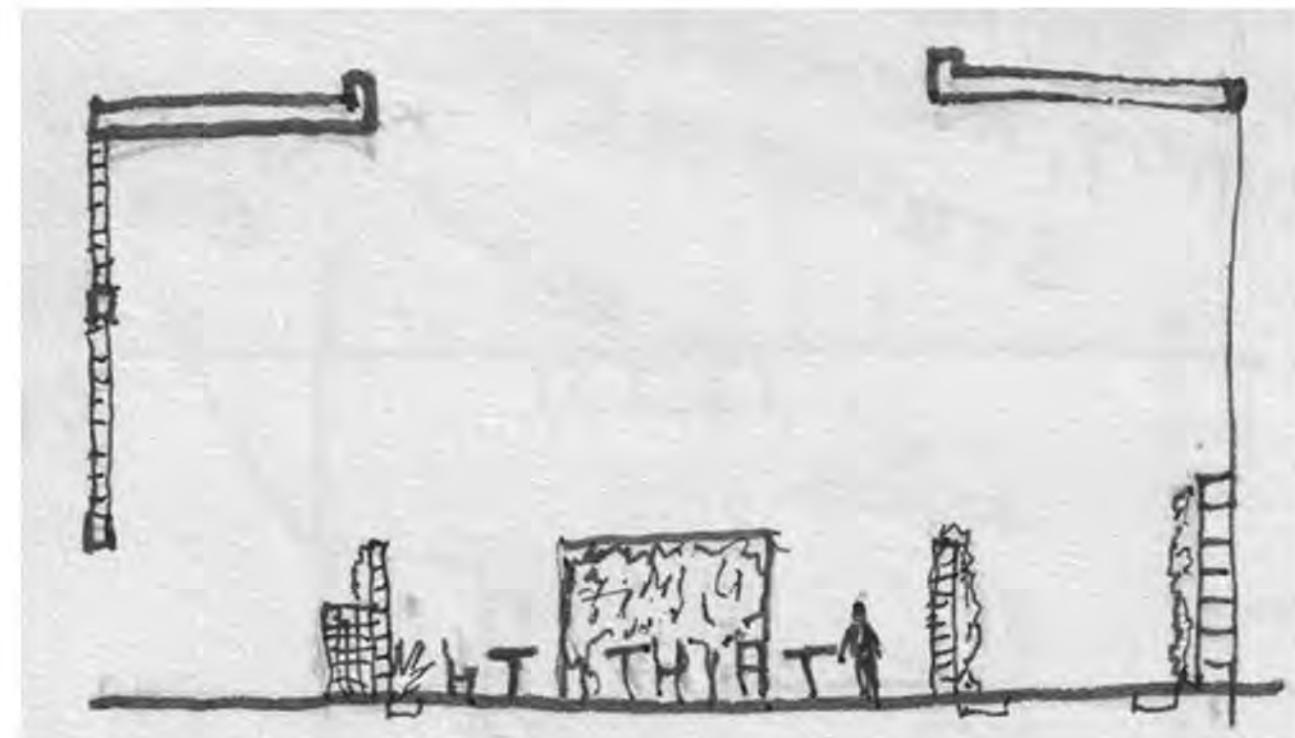


DRAWING SCALE:
1/8" = 1'

SHEET NUMBER: L-1
SHEET NUMBER IN SET: 2/5



In all 3 versions, planter boxes and existing metal structures support climbing plants on the perimeter of the site, re-using quality materials while dampening the echo and bringing new life to the space.



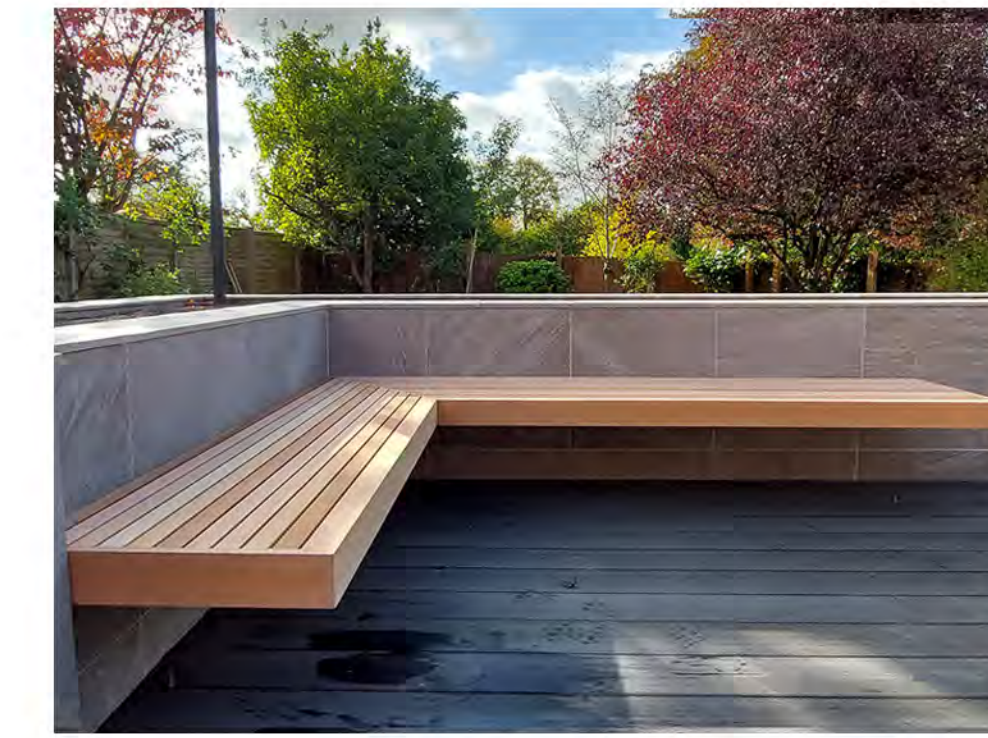
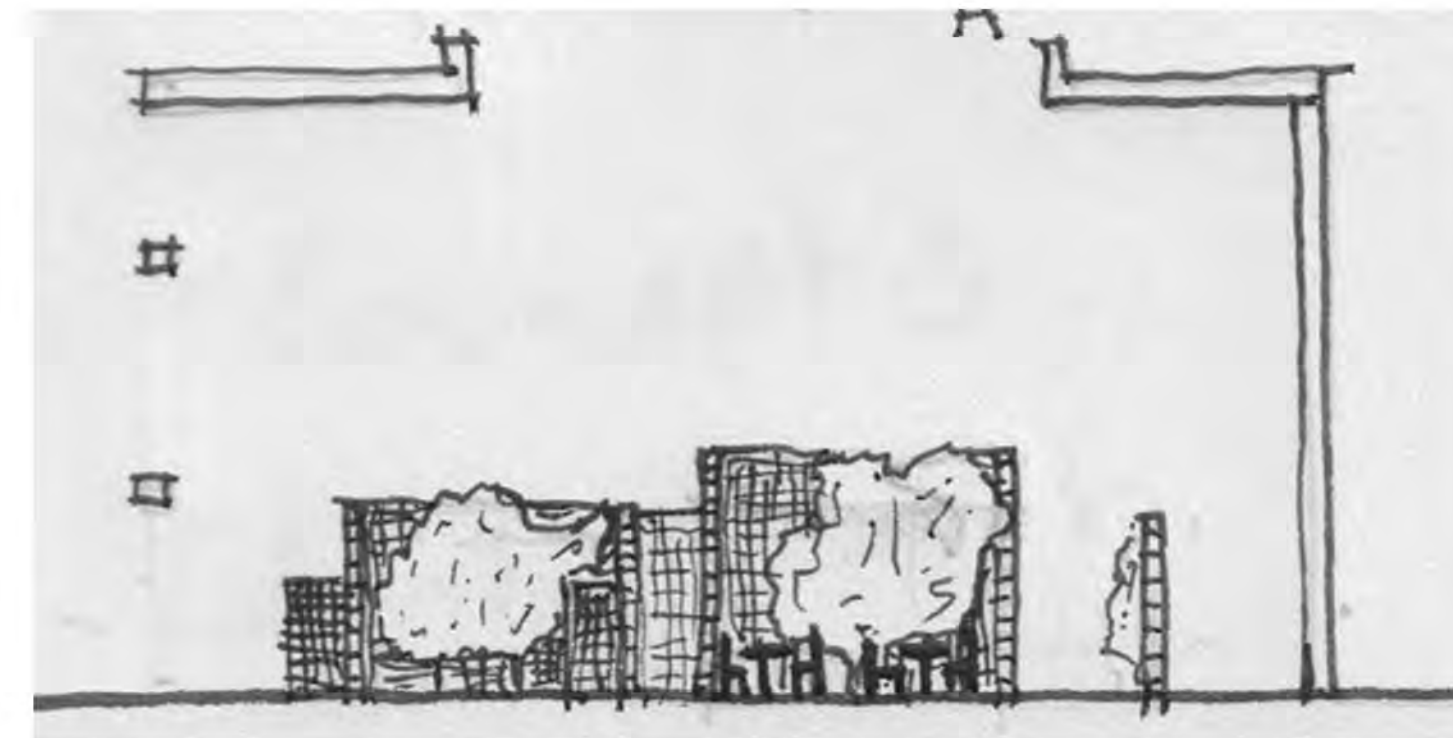
Option 1 Open Air Theater

In the low budget iteration of this concept, three of the lower brise soleil panels are removed and reconfigured to create an outdoor theater space complete with open doors. The stage is built with granite slabs repurposed from the site. This outdoor room can serve for performances as well as protection from the wind and a quiet respite from life on campus.



Option 2 Labyrinth Folly

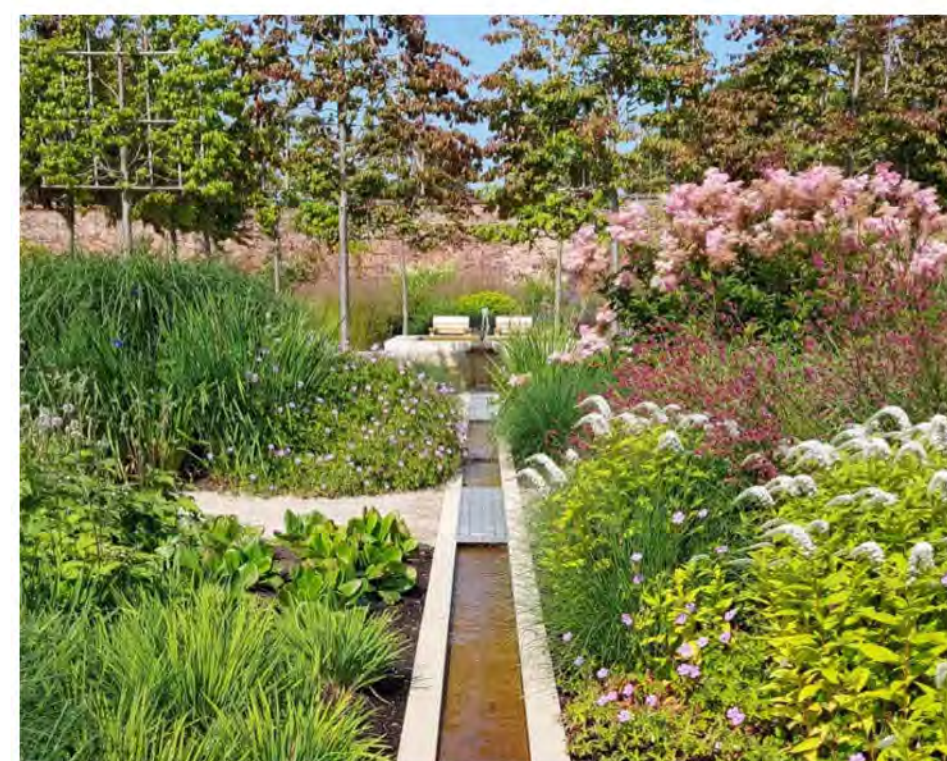
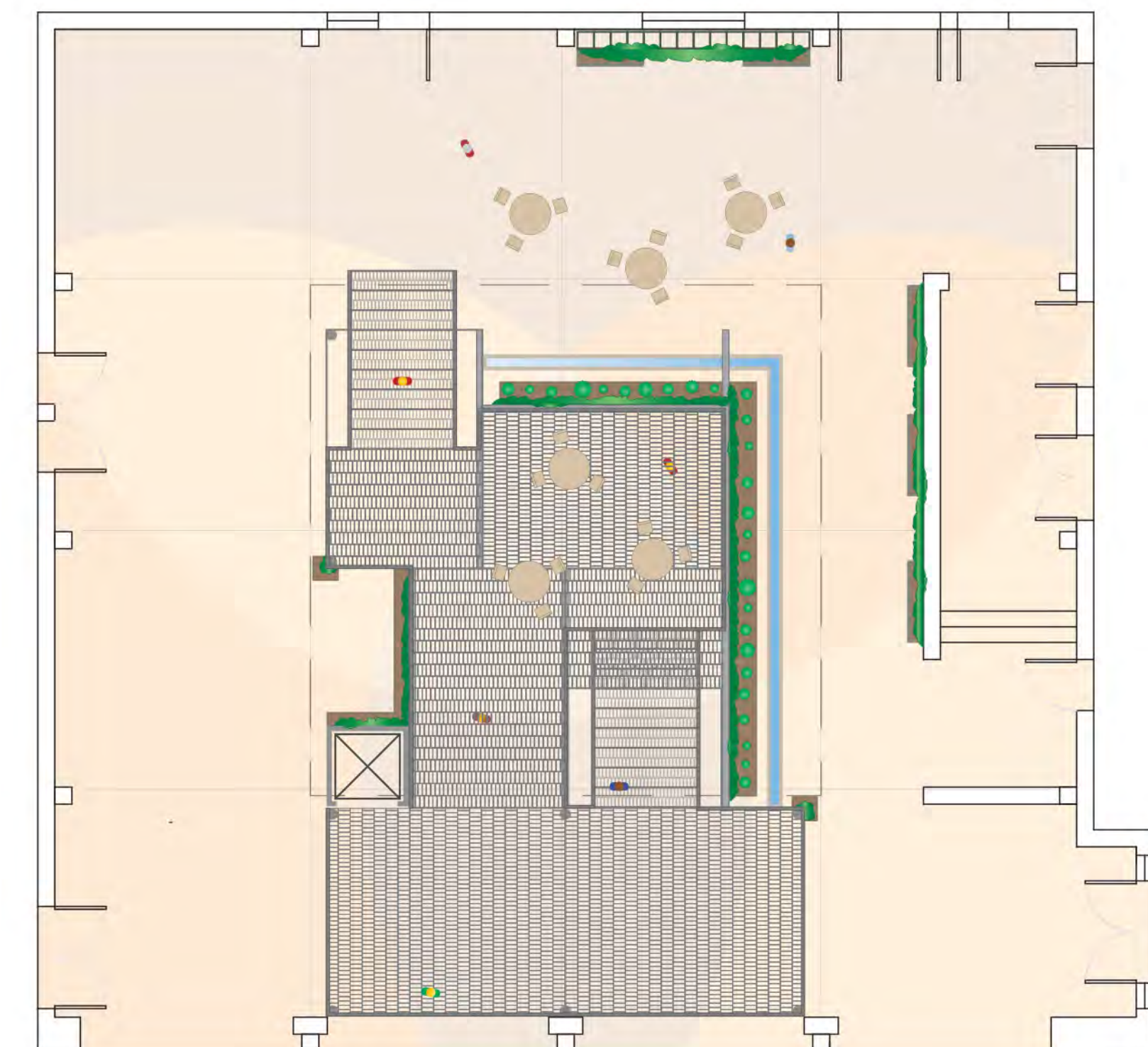
The medium budget version uses all 12 brise soleil panels to form a maze folly that leads to a tranquil space within a space. A running rill dips in and out of sight behind towering screens of green as patrons enjoy the echoing sounds from a mix of flexible seating and floating benches. Existing metal structures along the perimeter and throughout the courtyard are repurposed as trellises for climbing plants. Hanging plants cascade from the facade, growing to replace the brise soleil's shading function.



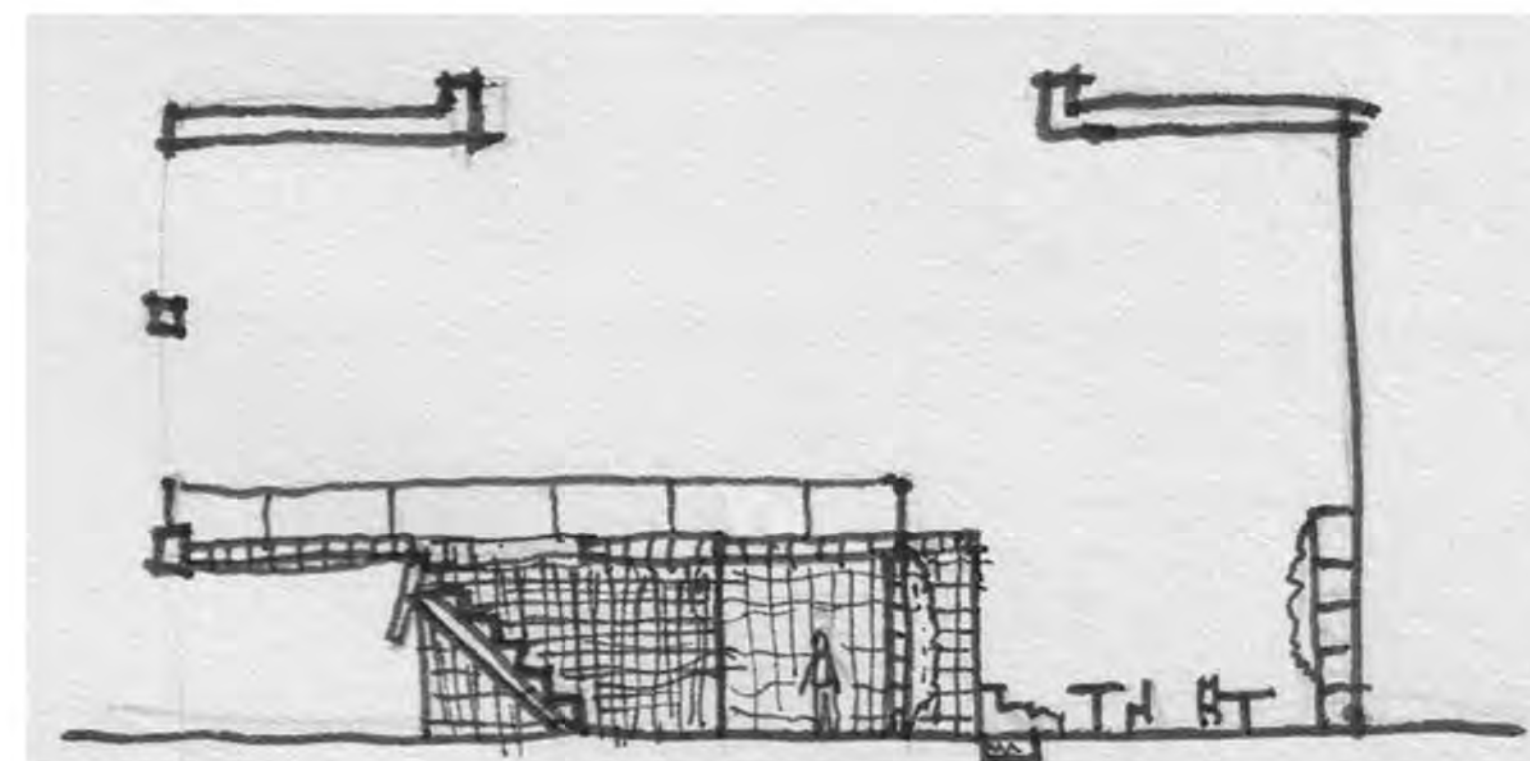
Cantilevered benches add social seating and activate the edges of the space.

Option 3 Grotto Terrace

All of the panels come down for the high budget concept, transforming into a covered passage that leads up to a terrace with views over the sculpture garden beyond. Two stairwells are created using the door openings of the brise soleil. The second staircase leads back to a sheltered seating area with views on the running rill. The top level also features flexible seating, as well as ADA access. A plexiglass floor prevents small feet from getting stuck in the gaps of the brise soleil.



A running rill brings soothing sounds and sights to the courtyard.



STUDENT NAME:
Josep Ferrer Miranda

COURSE:
Landscape Design 1

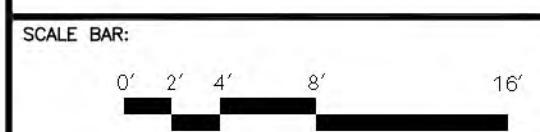
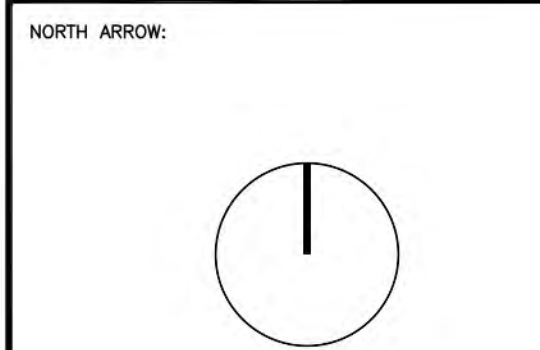
INSTRUCTOR:
Steven Chavez

SITE NAME AND ADDRESS:
UCLA Courtyard of
Theaters at Macgowan
Hall
245 Charles E Young Dr E,
Los Angeles, CA 90095

DRAWING TITLE:
Design
Alternatives



DRAWING NOTES:
This concept pays homage to the site's past, re-imagining it's high-quality materials into exciting future possibilities. A tinted concrete floor resolves grading issues and extends the coloring of the Coral Tree Walk into the courtyard. Brise soleil panels are removed and reconfigured to open up the space, creating new spaces within. The structures offer wind protection as well as a foundation for plants that can climb towards the sun and take over the space, dampening echoes and imbuing the courtyard's hard edges with new life.



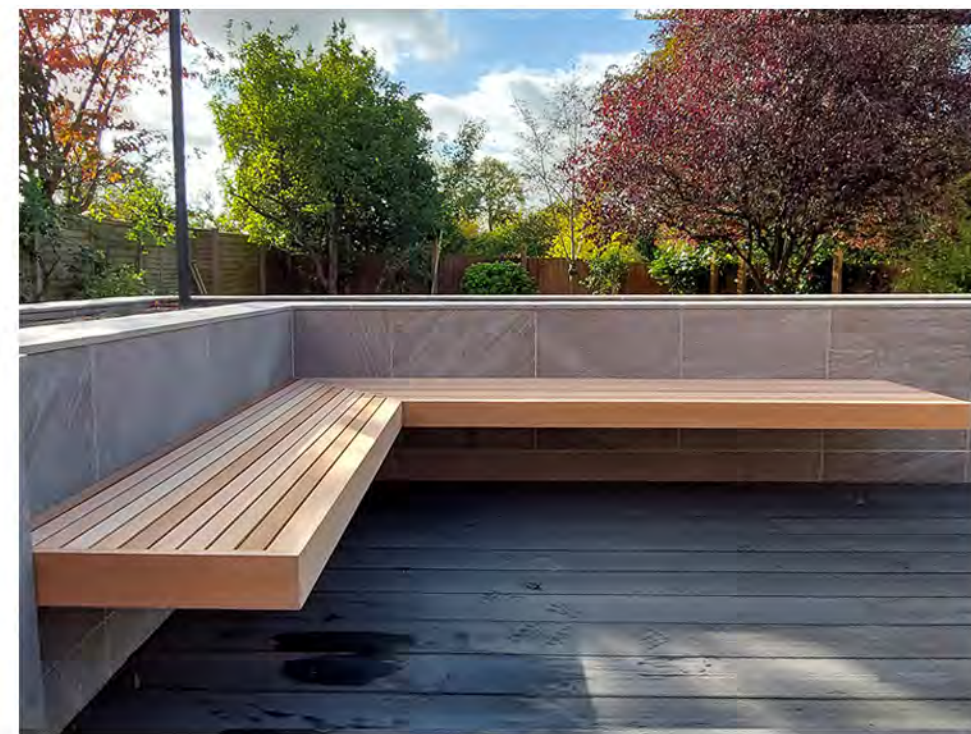
DRAWING SCALE:
1/8" = 1'

SHEET NUMBER:
L-3

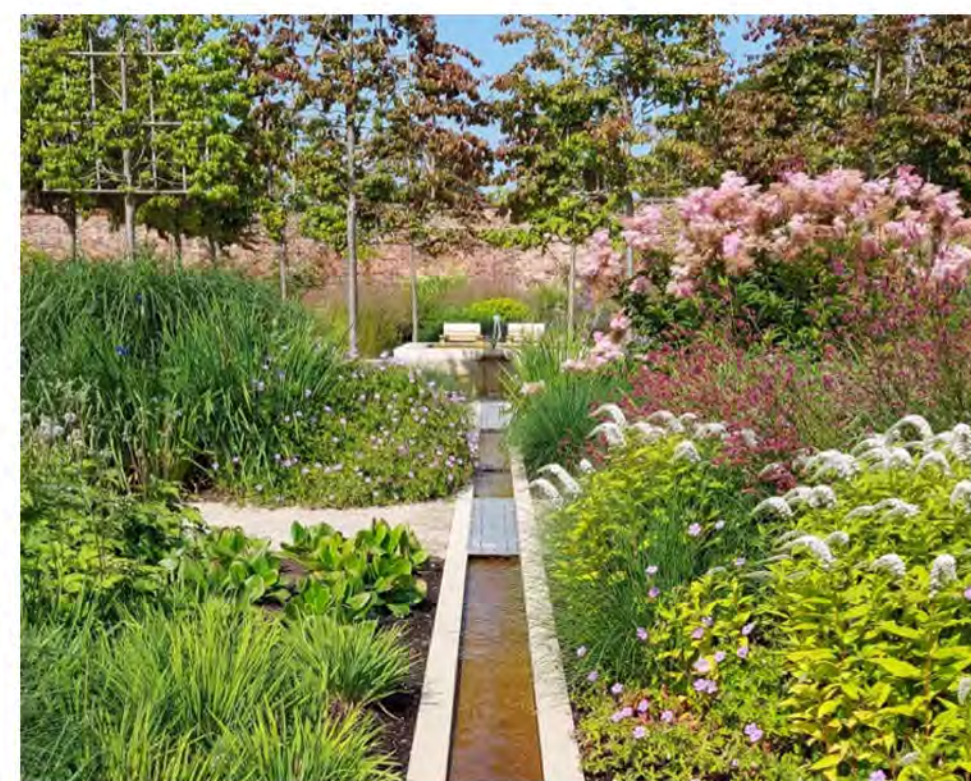
SHEET NUMBER IN SET:
3/5

MacGowan Hall Courtyard
Labyrinth Folly

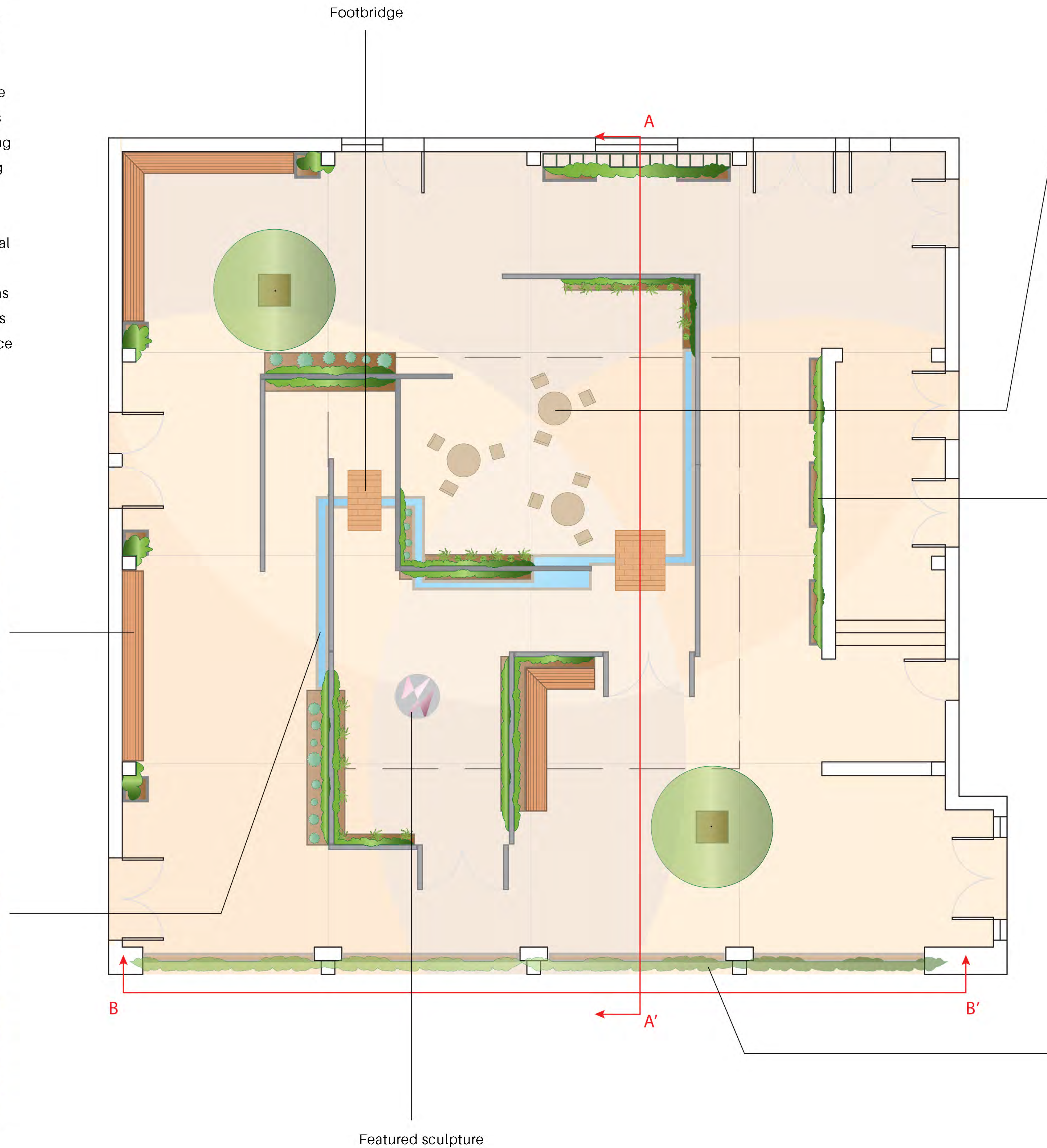
The medium budget version uses all 12 brise soleil panels to form a maze folly that leads to a tranquil space within a space. A running rill dips in and out of sight behind towering screens of green as patrons enjoy the echoing sounds from a mix of flexible seating and floating benches. Existing metal structures along the perimeter and throughout the courtyard are repurposed as trellises for climbing plants. Hanging plants cascade from the facade, growing to replace the brise soleil's shading function.



Cantilevered benches add social seating and activate the edges of the space.



A running rill brings soothing sounds and sights to the courtyard.



Flexible seating in a semi-contained inner patio.



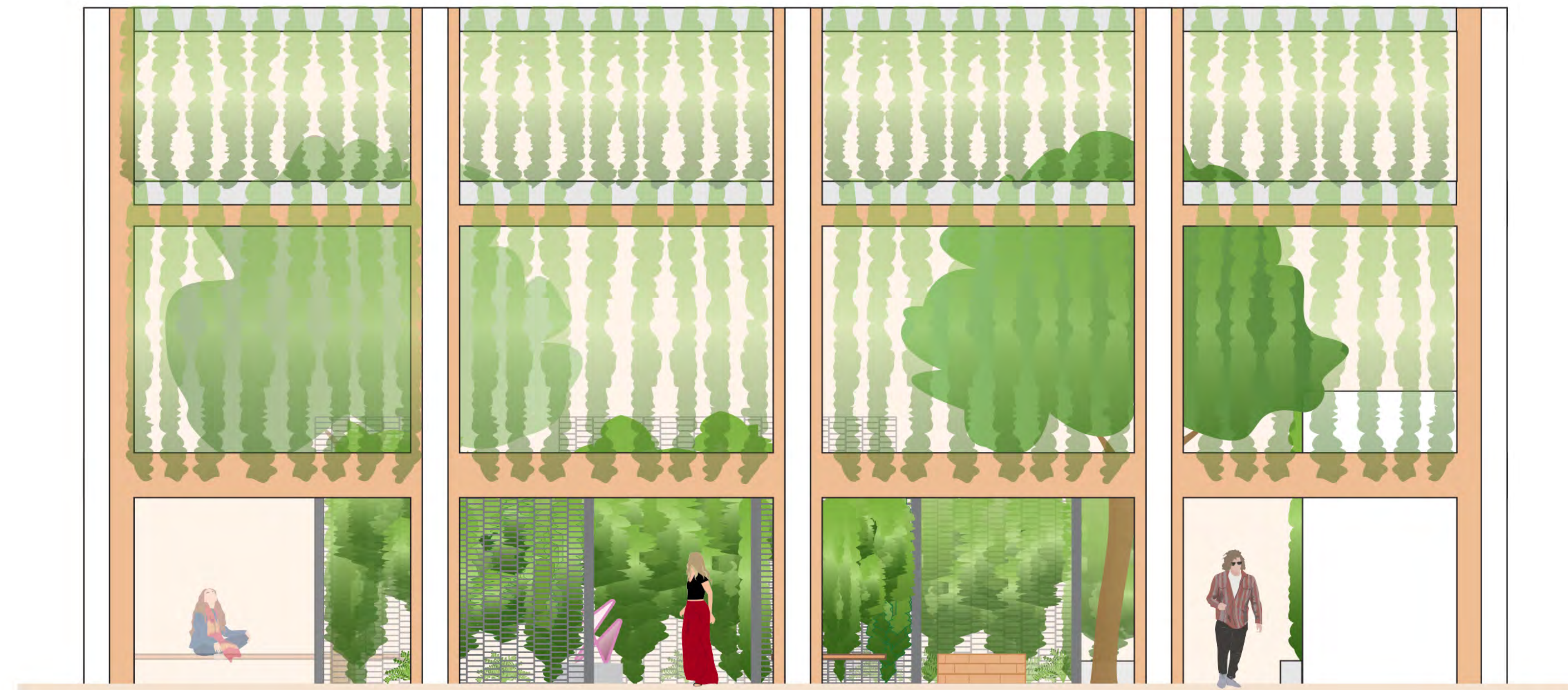
Planter boxes and existing metal structures support climbing plants.



Curtains of greenery hang from the facade, shading the courtyard within.

STUDENT NAME: Josep Ferrer Miranda	
COURSE: Landscape Design 1	
INSTRUCTOR: Steven Chavez	
SITE NAME AND ADDRESS: UCLA Courtyard of Theaters at MacGowan Hall 245 Charles E Young Dr E, Los Angeles, CA 90095	
DRAWING TITLE: Site Plan	
AERIAL IMAGE: 	
DRAWING NOTES: This concept pays homage to the site's past, re-imagining it's high-quality materials into exciting future possibilities. A tinted concrete floor resolves grading issues and extends the coloring of the Coral Tree Walk into the courtyard. Brise soleil panels are removed and reconfigured to open up the space, creating new spaces within. The structures offer wind protection as well as a foundation for plants that can climb towards the sun and take over the space, dampening echoes and imbuing the courtyard's hard edges with new life.	
NORTH ARROW: 	
SCALE BAR: 0' 1' 2' 4' 8'	
DRAWING SCALE: 1/4" = 1' - 0"	
SHEET NUMBER: L-4	SHEET NUMBER IN SET: 4/5

MacGowan Hall Courtyard
Labyrinth Folly



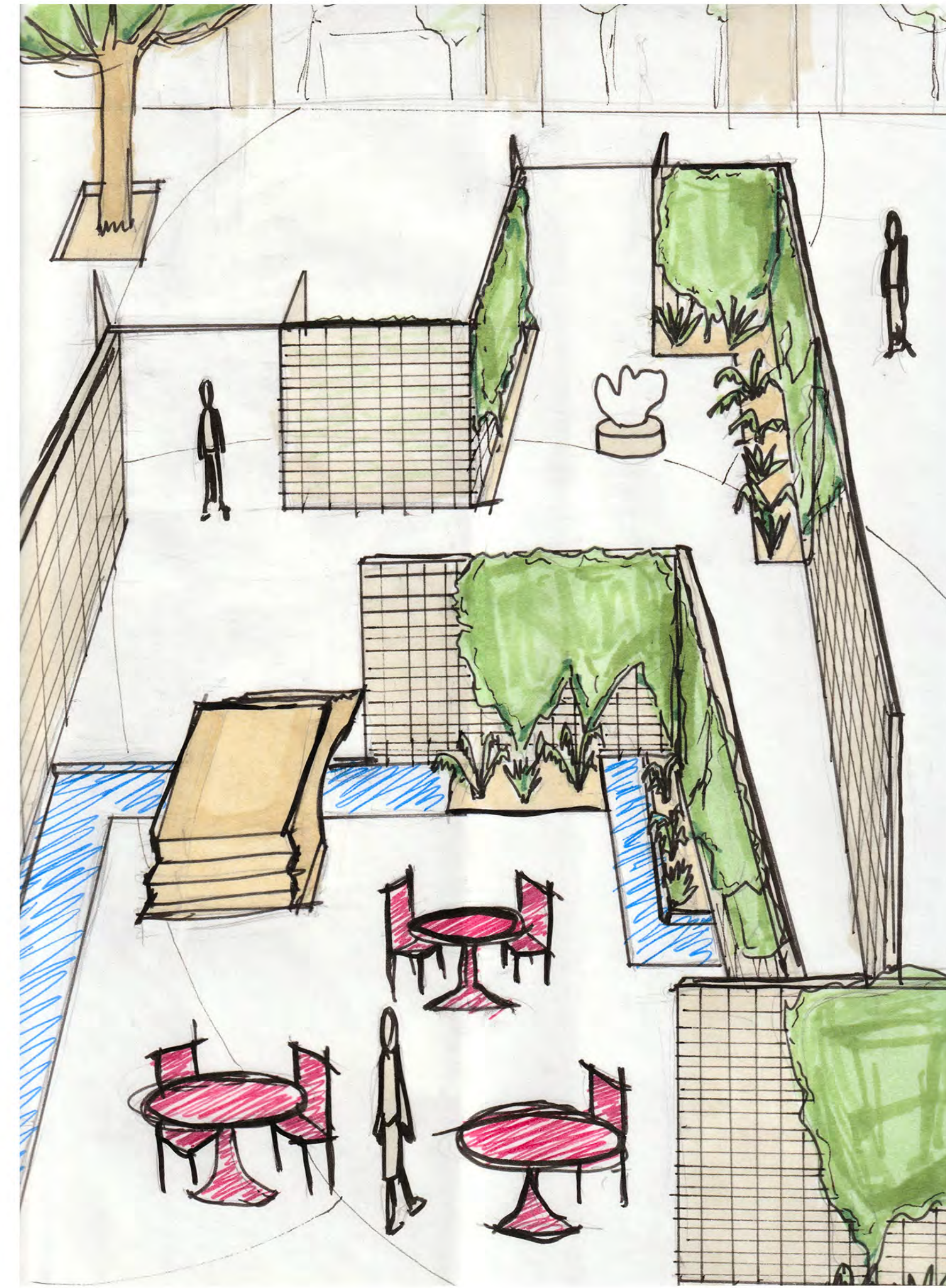
A

A'

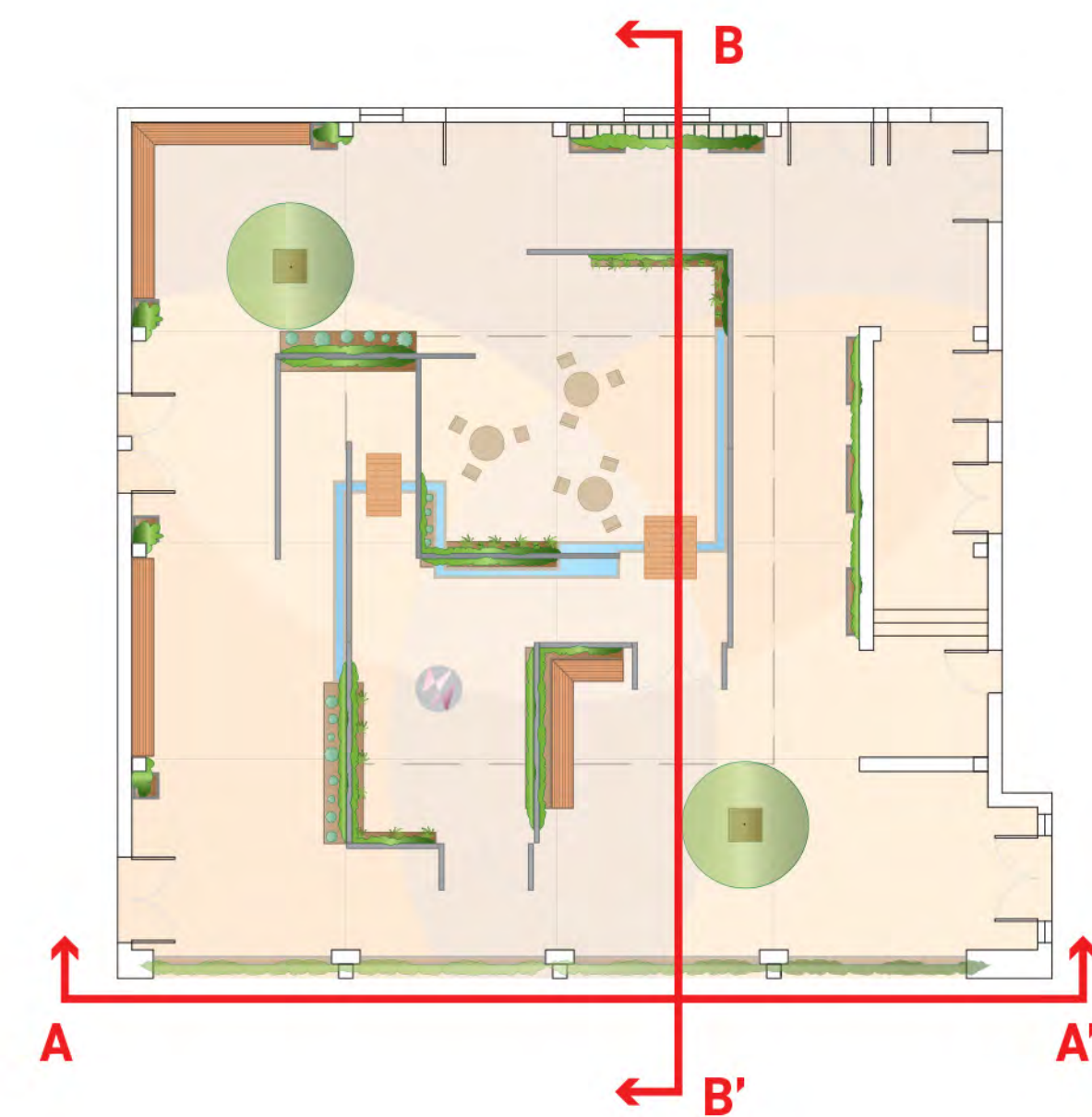


B

B'



NTS



STUDENT NAME:
 Josep Ferrer Miranda

COURSE:
 Landscape Design 1

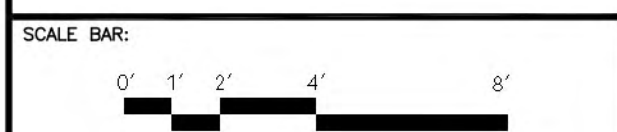
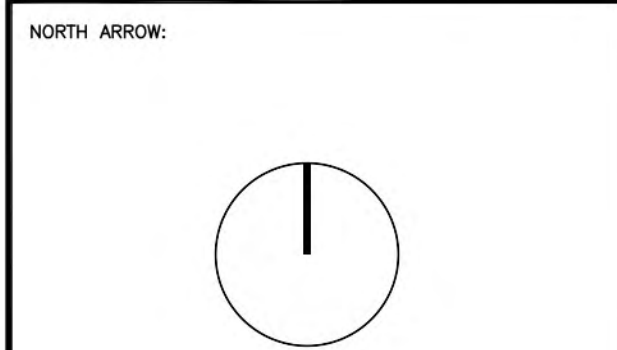
INSTRUCTOR:
 Steven Chavez

SITE NAME AND ADDRESS:
 UCLA Courtyard of
 Theaters at MacGowan
 Hall
 245 Charles E Young Dr E,
 Los Angeles, CA 90095

DRAWING TITLE:
 Sections &
 Perspective



DRAWING NOTES:
 This concept pays homage to the site's past, re-imagining it's high-quality materials into exciting future possibilities. A tinted concrete floor resolves grading issues and extends the coloring of the Coral Tree Walk into the courtyard. Brise soleil panels are removed and reconfigured to open up the space, creating new spaces within. The structures offer wind protection as well as a foundation for plants that can climb towards the sun and take over the space, dampening echoes and imbuing the courtyard's hard edges with new life.



DRAWING SCALE:
 1/4" = 1' - 0"

SHEET NUMBER:
 L-5

SHEET NUMBER IN SET:
 5/5

