

RIVERSIDE CHINATOWN HERITAGE PARK:

Employing Ancient Practices to Connect a Modern Community

Grace Pan
Meg Coffee | Steven Chavez
UCLAx Capstone Studio (ARCH X472.15D)
Summer 2024



TABLE OF CONTENTS — What Inside?

03 Project Introduction

- 4 | Project Statement
- 5 | Project Location
- 6 | Project Context
- 7 | Regional History
- 8 | Project Goals
- 9 ~ 13 | Project Justification

14 Analysis & Exploration

- 15 | Land Use Map
- 16 | Regional Topography Map
- 17 | Existing Utility Map
- 18 | Field Analysis
- 19 | Topography & Hydrology
- 20 | Existing Circulation & Adjacent Uses
- 21 | Demographics: Human Users
- 22 | Demographics: Flora & Fauna
- 23 ~ 25 | Site Photos
- 26 | Site Opportunities & Constraints
- 27 ~ 29 | Design Methodology
- 30 ~ 32 | Case Studies
- 33 ~ 38 | Exploring Connection
- 39 | Programming Mind Map

40 Design

- 41 | Bubble Diagrams - 3 Concepts
- 42 ~ 43 | Concept 1: Agricultural Roots
- 44 ~ 45 | Concept 2: Balance and Harmony
- 46 ~ 47 | Concept 3: The Way of Wind and Water
- 48 | Final Design Metaphor: The Way of Wind and Water
- 49 | Conceptual Diagram
- 50 | Inspiration Imagery
- 51 | Site Masterplan
- 52 | Circulation Plan
- 53 | Hardscape Plan
- 54 | Tree Plan & Palette
- 55 | Planting Plan
- 56 ~ 57 | Welcome Center & Tea House
- 58 ~ 59 | Wind Walk
- 60 ~ 62 | Water Way
- 63 ~ 65 | Chinatown Street
- 66 | Project Goals Recap

67 Thank You!

- 68 ~ 70 | Citations



01

PROJECT INTRO

INTRODUCTION

ANALYSIS & EXPLORATION

THE VISION

PROCESS

DESIGN

THE FUTURE

Theoretical Research Question:

How can form, fabric, and **story-telling** in landscape architecture be used to celebrate a specific aspect of Riverside's **rich cultural heritage** while creating a **inclusive**, multi-functional park space that is inviting for all?

PROJECT STATEMENT

This project transforms a series of overgrown, eclectic lots into **Riverside Chinatown Heritage Park**, a community park project that integrates ancient Chinese Feng-Shui design principles with modern societal and site-specific needs to create an **inclusive space** that **connects, heals, and educates the community**.



INTRODUCTION

ANALYSIS & EXPLORATION

THE VISION

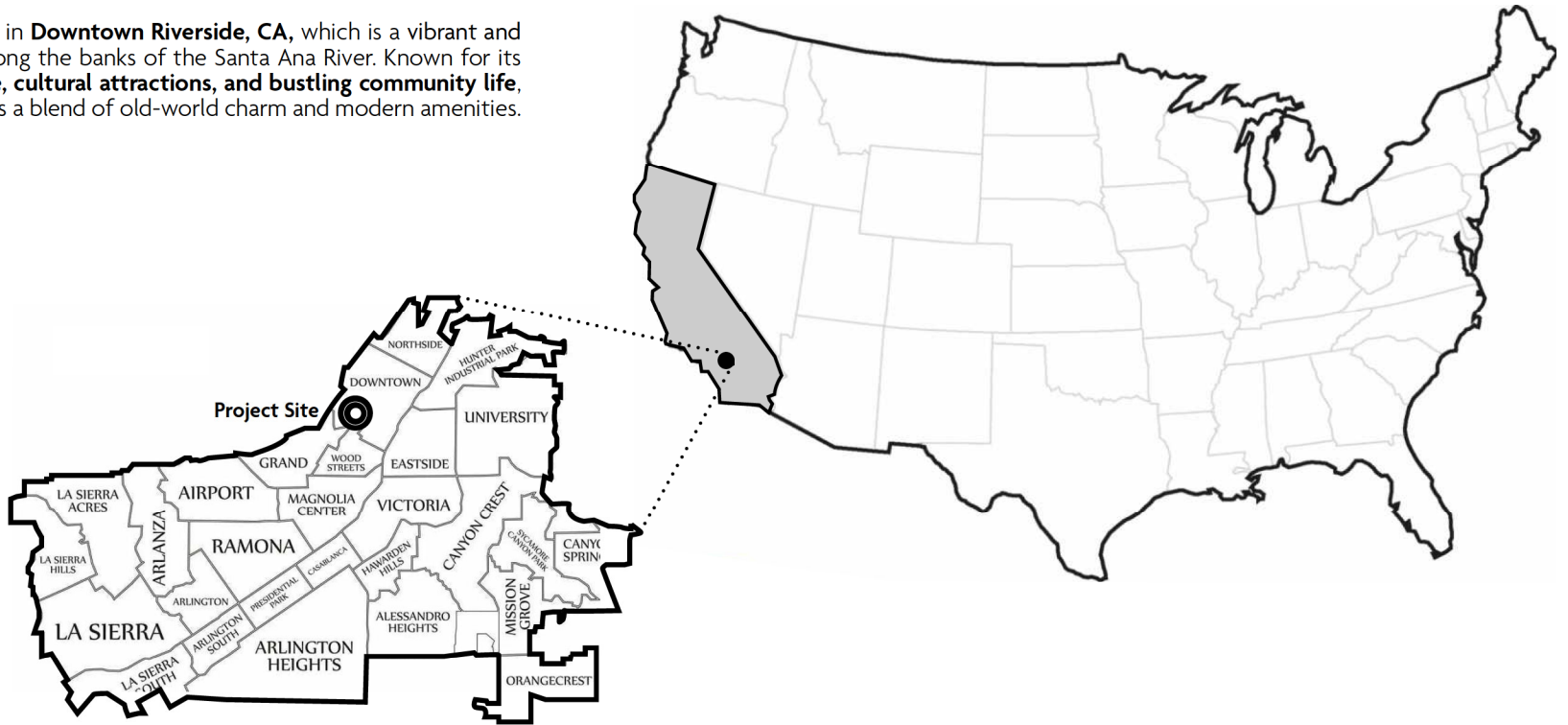
PROCESS

DESIGN

THE FUTURE

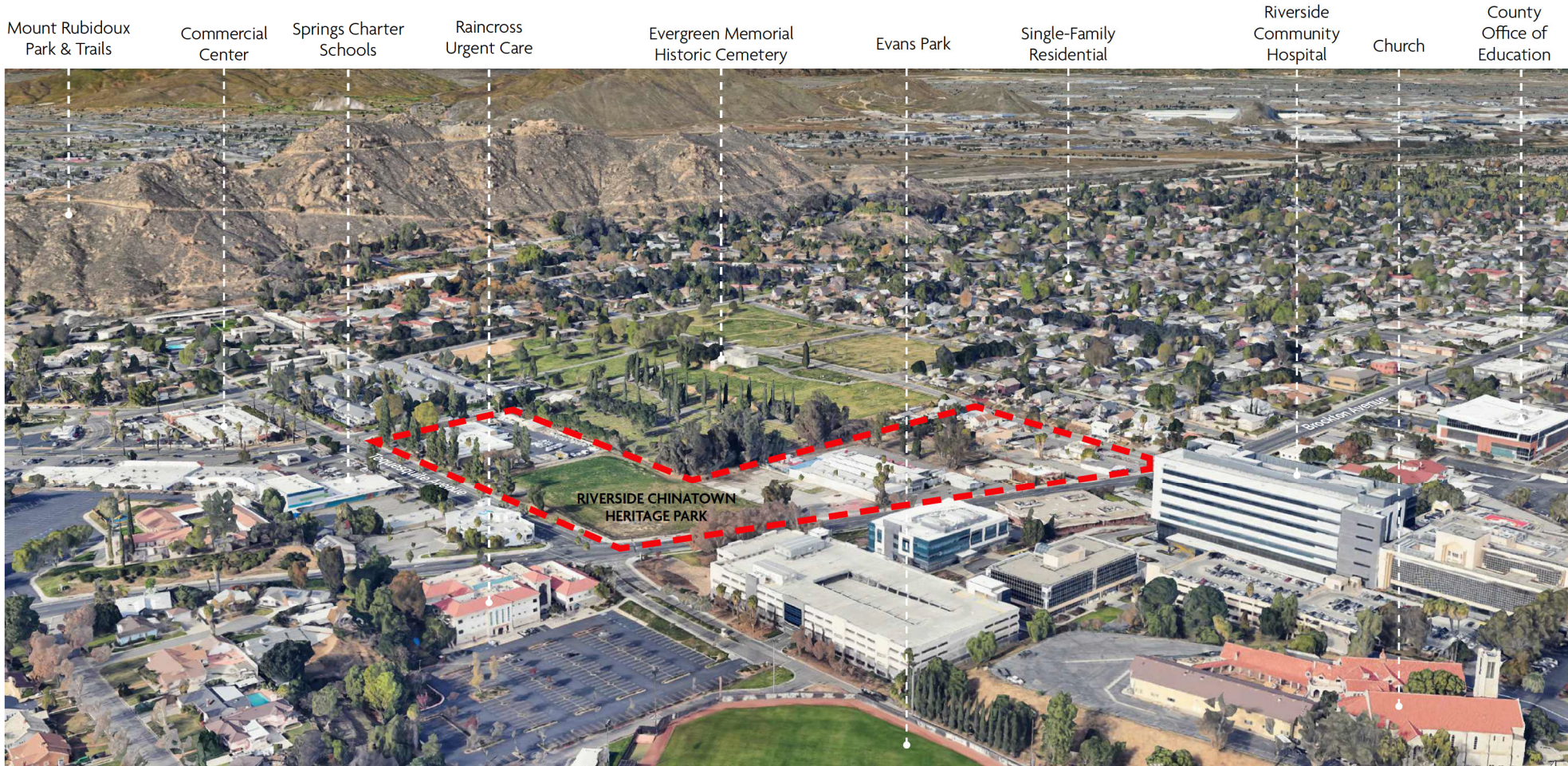
PROJECT LOCATION

The project site is located in **Downtown Riverside, CA**, which is a vibrant and historic district nestled along the banks of the Santa Ana River. Known for its rich **architectural heritage, cultural attractions, and bustling community life**, Downtown Riverside offers a blend of old-world charm and modern amenities.



City of Riverside, California

PROJECT CONTEXT



INTRODUCTION

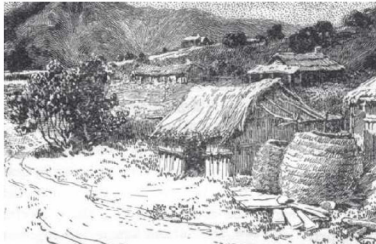
ANALYSIS & EXPLORATION

THE VISION

PROCESS

DESIGN

THE FUTURE



~8,000-5,000 B.C.

When the Juaneño, Gabrieleno, Cahuilla & Luiseño Native Tribes called this land home...

1850's - California's Gold Rush #1

An estimated 100,000 Native Americans died during the first two years. Much of the Gold Rush's success was built off of Native American slave labor.

1870's - California's Gold Rush #2 (Citrus!)

Eliza Tibbetts planted the first of two Washington navel orange trees. Chinese workers were brought in early on to replace Native American workers due to their extensive knowledge in growing citrus, working as laborers in the orchards and packing houses.

1882 Chinese Exclusion Act - repealed in 1943

1883 Riverside Incorporated

1894 Riverside's Second Chinatown

1980 Riverside County Office of Education purchased Riverside Chinatown

1990 Riverside Chinatown listed on the National Register of Historic Places

1879 - Riverside's First Chinatown

Riverside's first Chinatown was developed on a quarter block at Ninth and Orange.

1870's - 1970's A Century of Chinese History

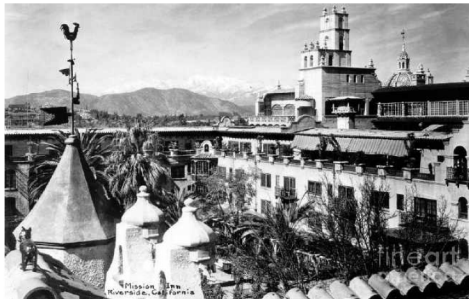
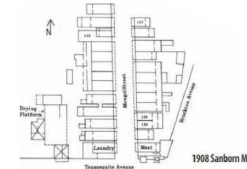
In the span of a century, Chinese immigrants left a permanent mark through their instrumental efforts in securing the monumental success of the Citrus industry throughout California as well as within the City of Riverside's local economy (via several entrepreneurial efforts such as a vegetable delivery service, laundromats, restaurants, and more). They were also a key labor force for constructing the Santa Ana and Los Angeles Railroad, lower canal from Riverside to Arlington,

1875 - The Mission Inn

The Mission Inn, originally a simple boarding house called "Glenwood Cottage" was built. Later, it was expanded upon and elaborately carved into the well-known Spanish Mission-Style "Cornerstone" or "Jewel of Riverside" that it is known to be today. The expansion and consequent remodels were meant to attract tourists from across the country. However, it was never a real Spanish Mission. Rather, one reason for its popularity was that it served as a luxurious getaway for curious Americans who wanted a glimpse into the operations of a real Spanish Mission, many of which were used to force Christian religion upon Native Peoples without regard for their culture, practices, beliefs, and desires. A slough of famous historical figures such as "presidents Roosevelt, Taft, Hoover, Nixon, Reagan, an Bush Jr. have all stayed, dined, and relaxed at the Mission Inn throughout its storied, nearly 150-year history." (Roberts)

1892 - The Sherman Institute

Originally the Perris Indian School, the Sherman Institute was the first non-reservation boarding school for Native American Children in California. The goal was to assimilate Native American tribes through educating their children into "civilized Americans." The institute also served as a tourist attraction for curious Americans stayed at the Mission Inn who wanted to see "real live Indians."



INTRODUCTION

ANALYSIS & EXPLORATION

THE VISION

PROCESS

DESIGN

THE FUTURE

GOALS AND OBJECTIVES

1. Connect

- A vibrant Chinatown Heritage Park with access for all
- Multi-use gathering spaces
- Multi-modal transportation
- Community engagement
- A thriving ecosystem to facilitate connection with nature



2. Heal

- Active living and outdoor recreation
- Sensory and healing gardens
- Re-introduction of native plant communities
- Cultural and historical restoration
- Sense of safety and well-being



3. Educate

- Programming that inspires environmental stewardship
- Green infrastructure
- Demonstration gardens and bioswales
- Outdoor classrooms and learning spaces
- Public art, memorials, and cultural interpretation



PROJECT JUSTIFICATION

Riverside Cultural Affairs Division:

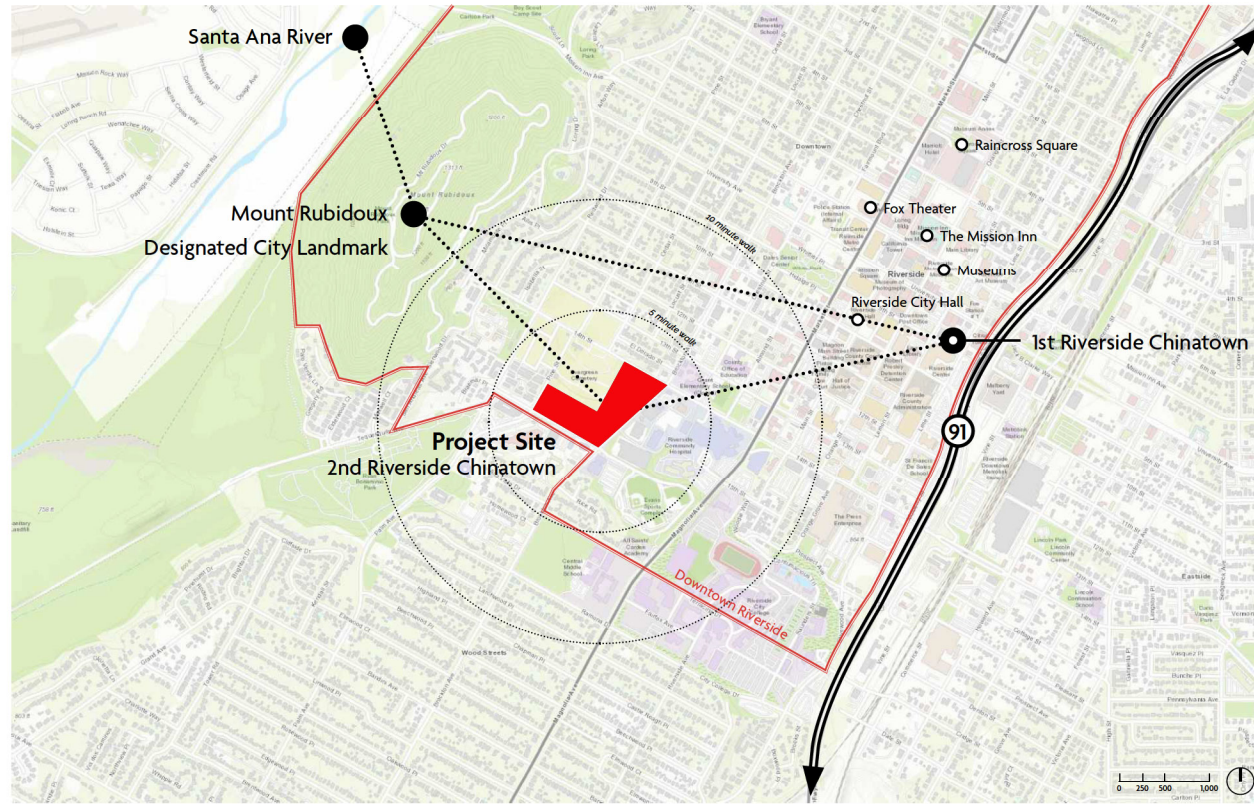
“[...]to make Riverside the identified center for arts, culture, education, and entertainment in the Inland Empire.”

This project seeks to contribute to that vision by integrating the proposed Project Site into the larger cultural framework within Downtown Riverside.

Project programming to create connections within community:

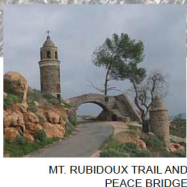
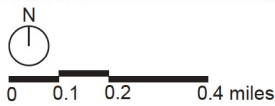
- Sculpture garden & Chinatown memorial (6,000 SF)
- Chinatown re-creation with gardens and courtyards (1 AC)
- Tea house (4,000 SF)
- Visitor's Center / Cultural Center (re-purpose existing Riverside Office of Education Building)
- Multi-use gathering spaces for community events (0.5 - 1 AC)
- Community garden (0.5 AC)

CONNECT





Courtesy of Save Our Chinatown Committee (SOCC), this exhibit illustrates proposed Downtown Riverside Heritage Trails that create a web of cultural experiences within the heart of Downtown



DOWNTOWN RIVERSIDE HERITAGE TRAILS

SOCC VISION: 2013 PARK PLAN (UNDEVELOPED)

RIVERSIDE CHINATOWN HERITAGE PARK

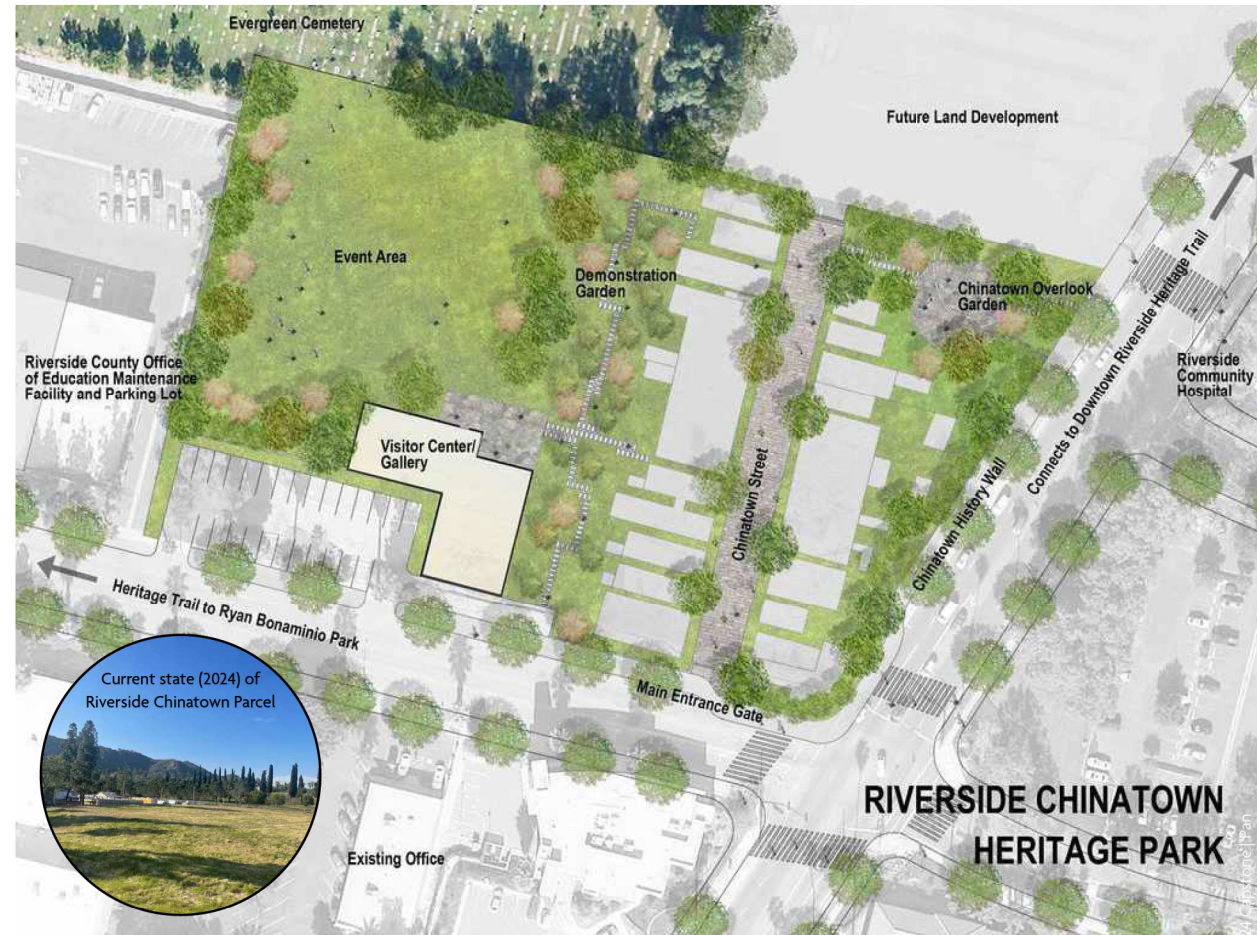
This is a 2013 site plan for one of the parcels within this project, which focused on creating a heritage park to honor the Chinese history of Riverside. As of 2024, this plan has not been implemented.

Primary Goals:

1. Protect and revitalize a community asset by highlighting its social, cultural, and archeological values.
2. Create new community-serving amenities and programs in Downtown Riverside for all to enjoy.

Program Elements:

1. Off-street parking
2. Interpretive/visitor's center (-3,000-4,000 SF): multi-purpose room, outdoor courtyard, gift shop, restrooms, etc.
3. Reconstruction of the historic water tower - placemaking element.
4. Formal Chinese garden as a remembrance/meditation garden for regular park visitors and hospital visitors from across the street.
5. Demonstration garden featuring vegetables grown by Chinese residents for use and sale. Citrus trees will also be planted as an ode to Chinese contribution towards the Citrus boom in California.
6. Replantings and interpretation of the significance of the Ailanthus "Sacred Tree of Heaven" at locations in the park and around the perimeter.



PROJECT JUSTIFICATION

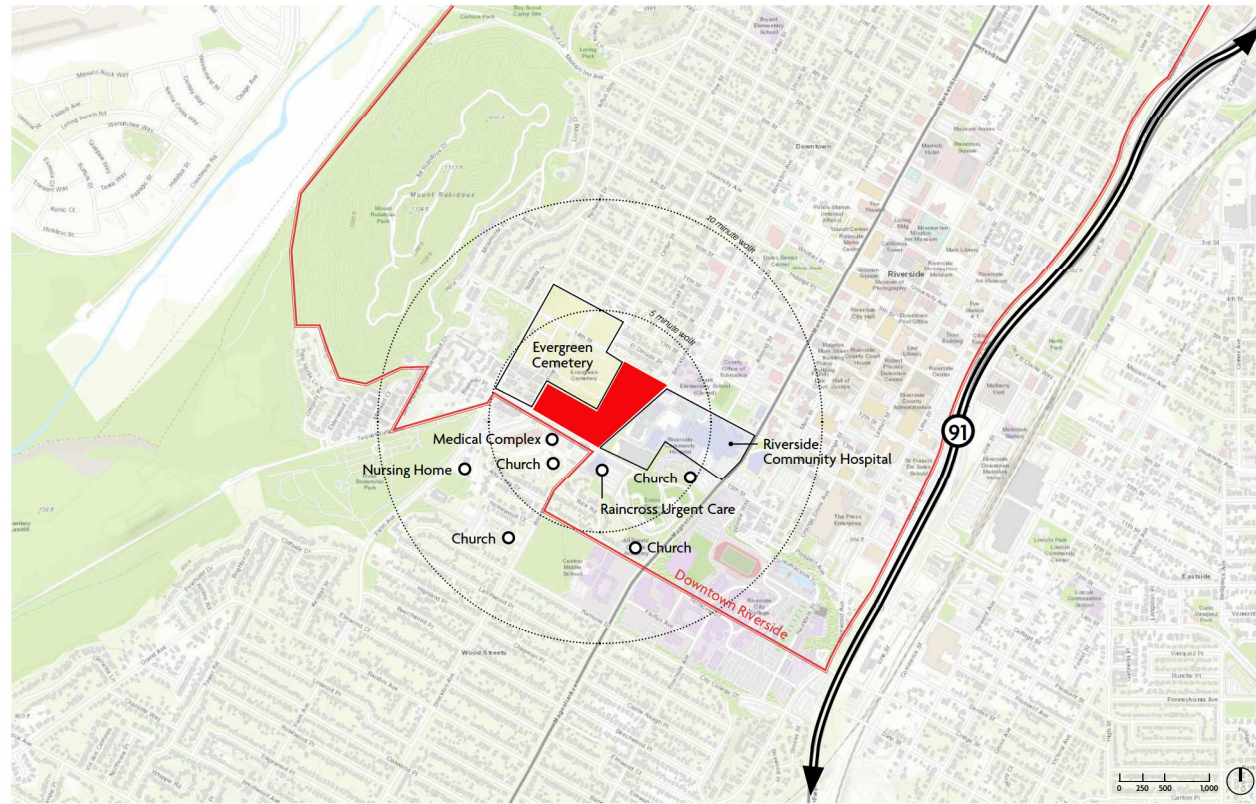
Nature has been an instrument of physical, spiritual, and emotional healing since the first human civilizations began. A growing science around sensory and healing gardens have informed a plethora of new technologies and strategies that use nature and landscapes to enhance overall wellness for communities.

The restoration of these eclectic lots draws a direct parallel to the healing of minds, hearts, and souls.

Project programming to promote healing within the community:

- Healing garden (3 - 5 AC)
- Sensory garden (2,000-4,000 SF)
- Reflection areas / meditation spaces (200-500 SF zones)
- Water features
- Inclusive park design (ADA & beyond)

HEAL



PROJECT JUSTIFICATION

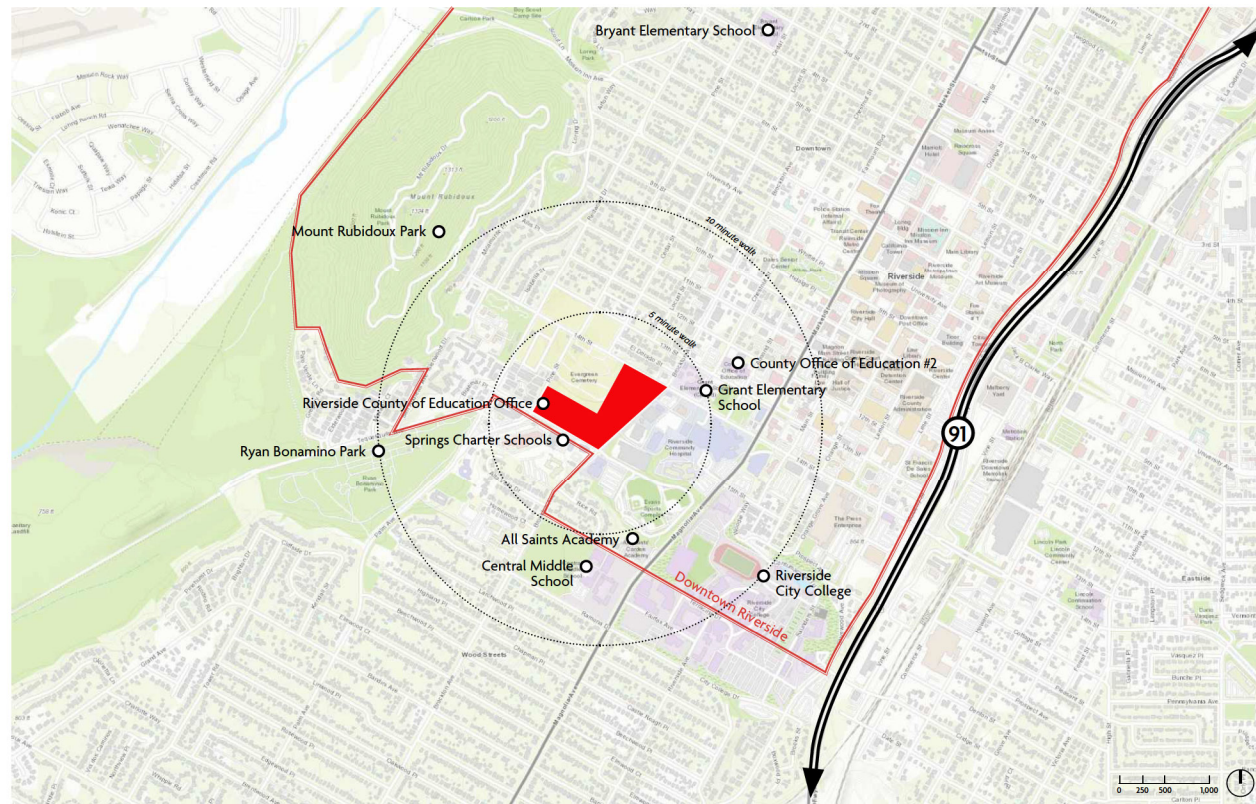
Within the site's immediate vicinity are 5 academic institutions that span from elementary school to college.

Creating a lasting legacy within a community means educating and empowering the community and future generations. The proximity to local schools, businesses, downtown and natural attractions, as well as densely populated residential areas makes this site an ideal candidate for acting as an educational hub for the community.

Project programming to foster learning within community:

- Demonstration gardens (500 SF - 1,500 SF)
- Academic research plots (1,000 SF)
- Natural children's play area (2,000 SF)
- Interpretive signage - environmental, cultural, and historical
- Overlook

EDUCATE



ANALYSIS & EXPLORATION

A DEEPER DIVE

To achieve a holistic design, one must take the time to listen to the orchestra of factors that constitute a site: its context, edges, adjacencies, condition, uses or lack thereof, topography, environment, location, etc. It is also wise to learn from precedents and literature to gain inspiration and insight.

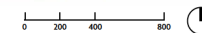


LAND USE ZONING MAP

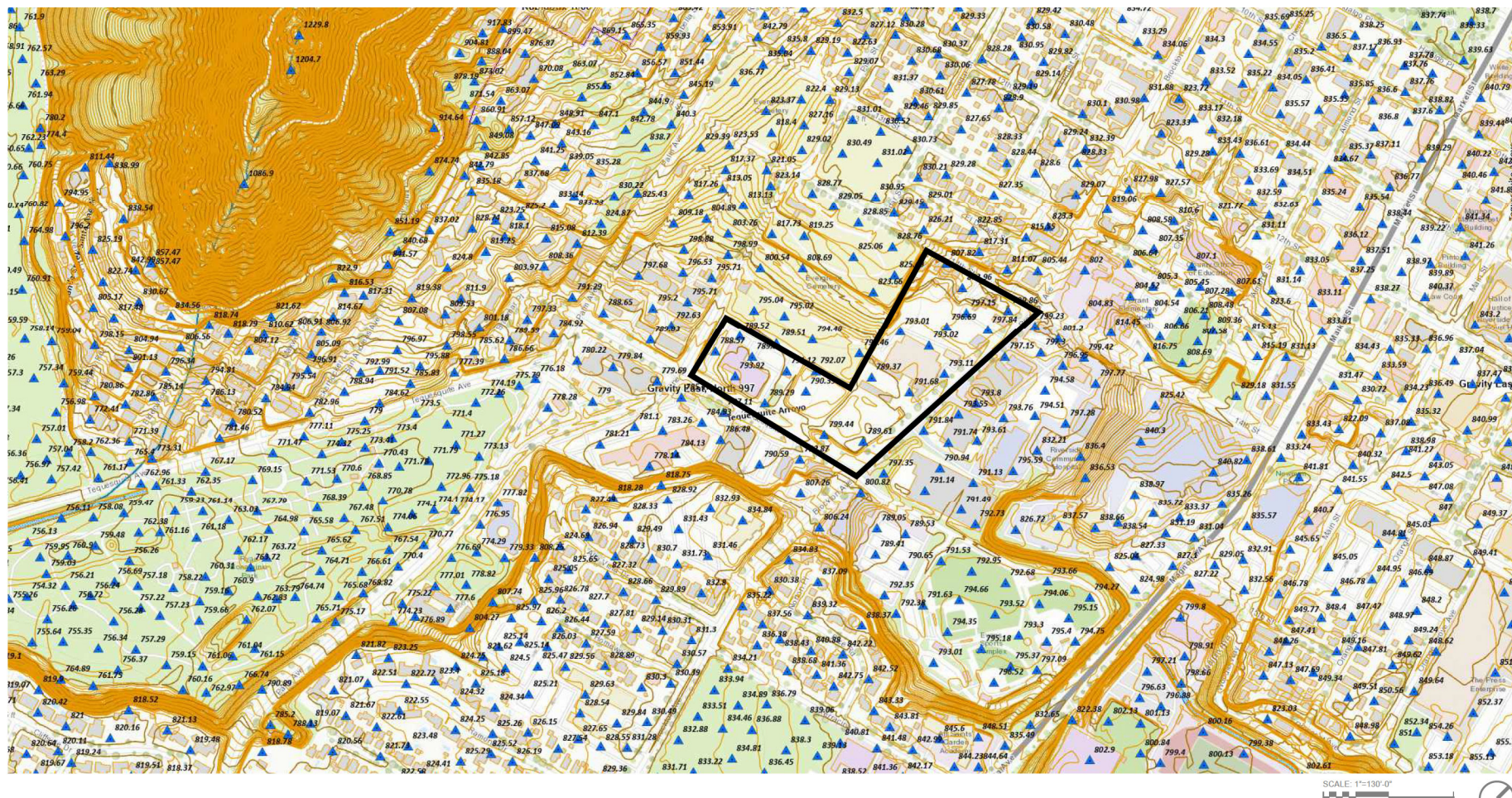


Land Use Map

- A - Agricultural
- A/RR - Agricultural/Rural Residential
- B/OP - Business/Office Park
- C - Commercial
- CBUSP - CBU Specific Plan
- CRC - Commercial Regional Center
- DSP - Downtown Specific Plan
- HDR - High Density Residential
- HR - Hillside Residential
- I - Industrial
- LDR - Low Density Residential
- MDR - Medium Density Residential
- MHDR - Medium High Density Residential
- MU-N - Mixed Use Neighborhood
- MU-U - Mixed Use Urban
- MU-V - Mixed Use Village
- NSP - Northside Specific Plan
- O - Office
- OS - Open Space/Natural Resources
- OSP - Orangecrest Specific Plan
- P - Public Park
- PF - Public Facilities/Institutions
- PR - Private Recreation
- RAT - K-RAT Core Habitat Preserve Areas
- RCHSP - Riverside Community Hospital Specific Plan
- SRR - Semi Rural Residential
- VHDR - Very High Density Residential
- VLDR - Very Low Density Residential
- Zoning



REGIONAL TOPOGRAPHY MAP



INTRODUCTION

ANALYSIS & EXPLORATION

THE VISION

PROCESS

DESIGN

THE FUTURE

UTILITY MAP



INTRODUCTION

ANALYSIS & EXPLORATION

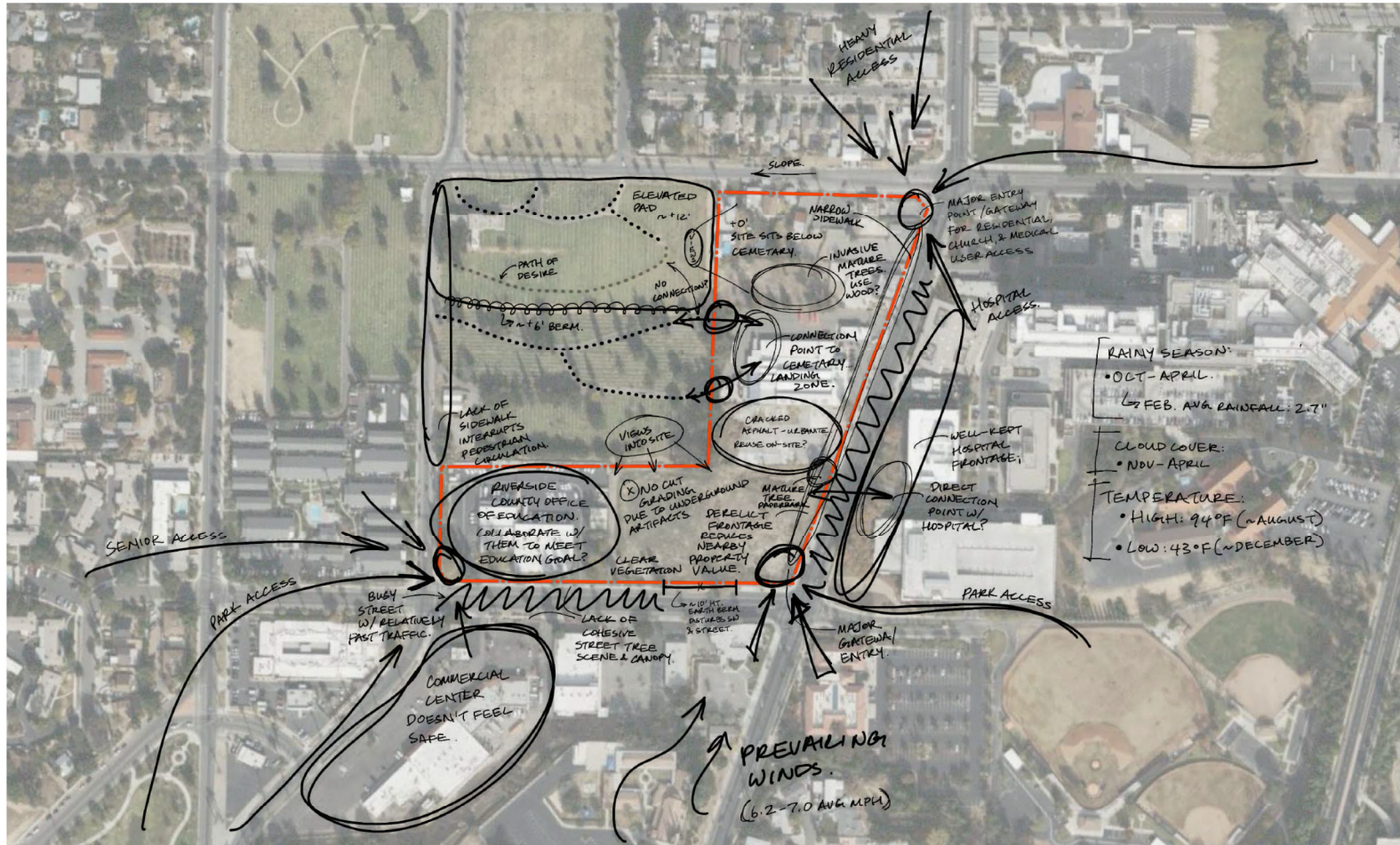
THE VISION

PROCESS

DESIGN

THE FUTURE

FIELD ANALYSIS



INTRODUCTION

ANALYSIS & EXPLORATION

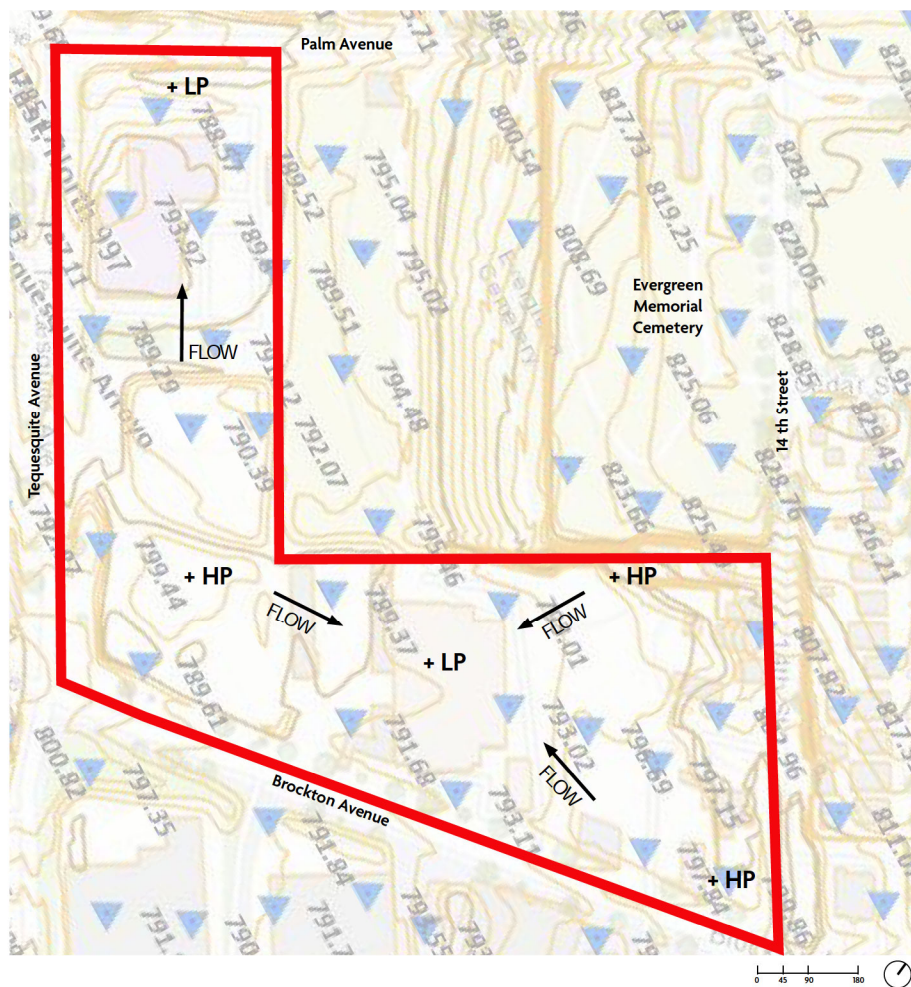
THE VISION

PROCESS

DESIGN

THE FUTURE

TOPOGRAPHY & HYDROLOGY

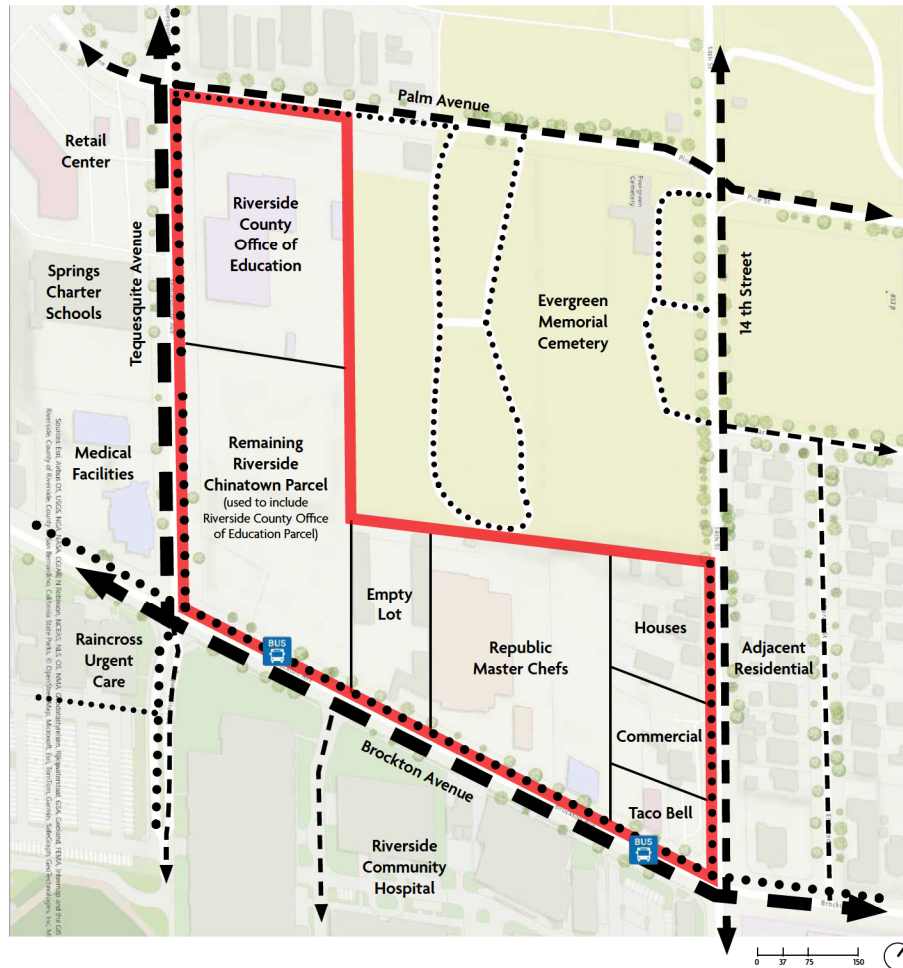


The project site features mild terrain. High points are mostly located along the perimeter of the site, with a central low point that serves as an ideal location for stormwater capture. The most significant change in elevation is along 14th Street and the Northern corner where Evergreen Memorial Cemetery and the project site connect.

LEGEND

- + LP Low Point
- + HP High Point
- ← FLOW Water Flow Direction
- 1' Contour Line

EXISTING CIRCULATION & ADJACENT USES



Riverside Community Hospital (RCH):

- 2,500 Employees
- >800 Physicians
- 517-Bed Facility
- >100,000 Patients / Year

Evergreen Memorial Cemetery:

- Founded in 1872 (Riverside's first Cemetery)
- Burial site of many Riverside's notable historical figures
- 45,000 individual graves

Retail Center

- Restaurants
- Beauty/Wellness Services
- Grocery Store
- Church

LEGEND

- Primary Pedestrian Circulation
- Secondary Pedestrian Circulation
- ← → Primary Vehicular Circulation
- ← - - → Secondary Vehicular Circulation
- ← - - - → Tertiary Vehicular Circulation
- Bus Stop

HUMAN USERS: DEMOGRAPHICS

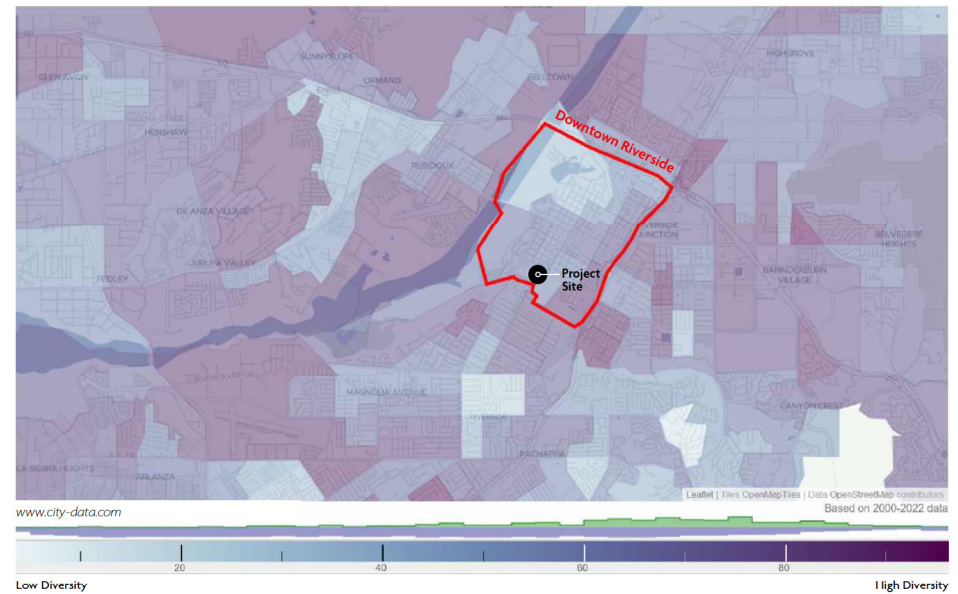
USERS

- Students from surrounding schools (elementary through college)
- Parents and children from adjacent daycare facility
- Families dwelling in nearby single-family homes and apartment complexes
- Seniors from nearby residences, nursing home, and hospitals
- Community members who attend nearby churches
- Medical center and hospital residents/family members/visitors/staff
- Visitors of Evergreen Memorial Cemetery
- Regional (Inland Empire and beyond) cultural park visitors
- Hikers of Mount Rubidoux Park
- Groups that seek a space for events and cultural gatherings
- Pets
- Local flora and fauna

STAKEHOLDERS

- County of Riverside
- City of Riverside
- Riverside Cultural Heritage Board
- Riverside Cultural Affairs Division
- Save Our Chinatown Committee (SOCC)
- Community members of Chinese heritage
- Community park users

RACIAL DIVERSITY IN DOWNTOWN RIVERSIDE



DEMOGRAPHIC DATA (2022):

- Average household income: \$103,513
 - Average household size: 3.3
 - Under age of 18: 29%
 - With a disability (under 65): 7.5%
 - Population per square mile: 3,878
 - (1,600 = national average)
- 4 Largest Ethnic Groups:**
- Hispanic or Latino (55.9%)
 - White (25.3%)
 - Asian (8.5%)
 - Black or African American (6.6%)

NATURAL USERS: FLORA & FAUNA

The users of this park extends beyond humans and into the natural world. **California is one of the most biodiverse states** in the nation. It is home to about 6,500 types of plants - 40% of which are endemic. However, local flora and fauna have been displaced by urban development for hundreds of years. This project seeks to combat that trend by restoring native habitats within an urban setting.

FLORA & FAUNA COMMONLY SIGHTED AT MOUNT RUBIDOUX:



Red-Tailed Hawk



Scrub Jay



Western Fence Lizard



Anise Swallowtail



Sticky Monkeyflower



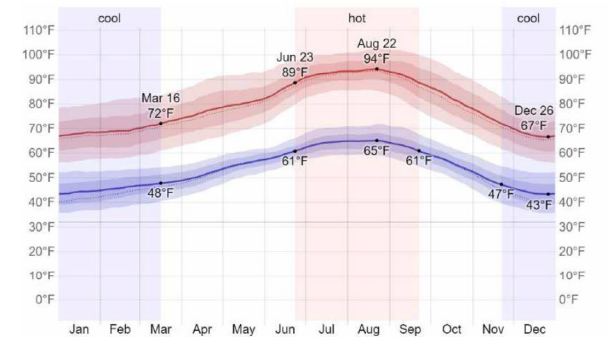
Brittlebush



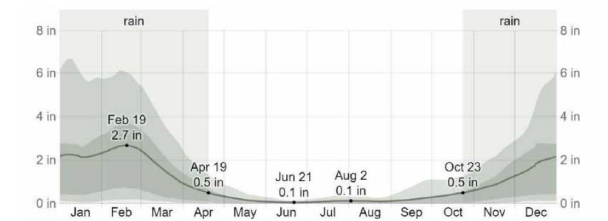
California Bluebells



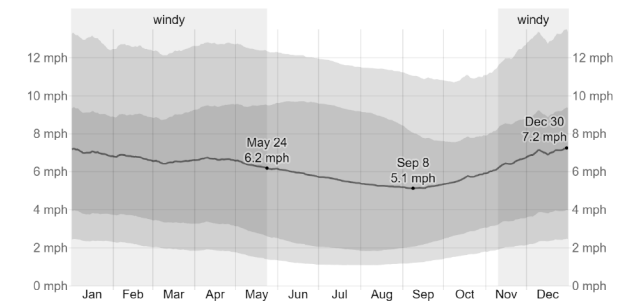
Chia Sage



Average Temperature in Riverside



Average Monthly Rainfall in Riverside



Average Wind Speed in Riverside

SITE PHOTOS



1. Abandoned driveway/lot leading up Evergreen Cemetary along NE edge of project site.



2. Adjacent medical facility facade along Brockton Ave. Very well-kept and stands in stark contrast to the project site side of the street.



3. Southern edge of project site. Minimal tree canopy coverage along Public ROW. Sidewalk could use an update.



4. Large earthen mound spills from side and onto road along Tequesquite Avenue, which makes pedestrian circulation very difficult.

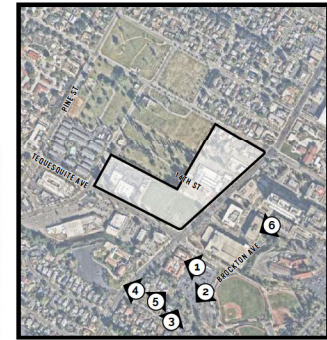


5. View into project site from sidewalk along Brockton Avenue



6. Brockton Ave and 14th St intersection. Del Taco frontage is outdated and not very welcoming.

KEY MAP



SITE PHOTOS



1. Lack of sidewalk along Pine Street.



2. Adjacent apartment housing complex, Pine Village, located along Pine Street.



3. Riverside County Office of Education Receiving area.



4 Riverside County Office of Education - existing parking lot.



5. Riverside Chinatown Memorial plaque at intersection of Brockton Ave and Tequesquite Ave - frontage for Riverside County Office of Education.

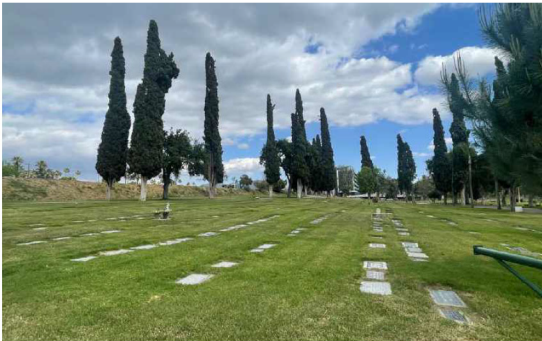


6. Views toward SE of site consist of large medical buildings along Brockton Ave. Good for orientation, but they are not at human scale.

KEY MAP



SITE PHOTOS



1. Evergreen Memorial Cemetary with varying topography. This area is enclosed with a berm.



2. Unkept, low wall and fence separates Evergreen Memorial Cemetary and the Riverside County of Education building's back-of-house.



3. Worn and outdated chain link fence with slats separating Riverside Chinatown parcel and Evergreen Memorial Cemetary



4. On top of berm at Evergreen Memorial Cemetary overlooking project parcels, most of which are unkept and overgrown.



5. Additional views from berm looking into Master Chefs Store's loading area.

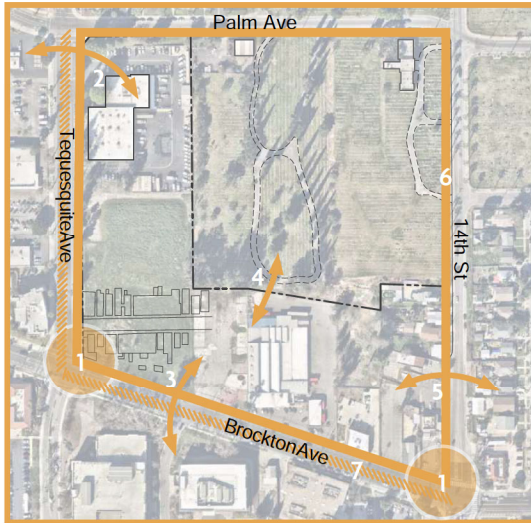


6. Views from Evergreen Memorial Cemetary looking out at Mount Rubidoux, a great borrowed view.

KEY MAP



SITE OPPORTUNITIES & CONSTRAINTS



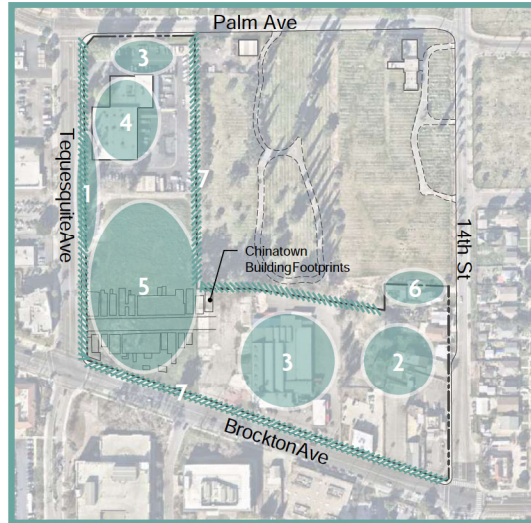
CONNECT

Opportunities:

1. Intersection / corner entries
2. Connect to retail center
3. Connect to hospitals and medical buildings
4. Connect to Evergreen Memorial Cemetery
5. Connect to single family residential

Constraints:

5. Busy and loud conditions along Brockton and Tequesquite Ave
6. Lack of perimeter sidewalk infrastructure



HEAL

Opportunities:

1. Sidewalk repair
2. Community garden
3. Stormwater capture at low points of site
4. Repurpose existing building

Constraints:

5. Grading can only consist of fill on Chinatown parcel
6. Drastic change in elevation (12')
7. Edge conditions are run-down, disconnected, and unattractive.



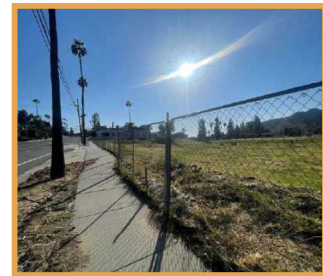
EDUCATE

Opportunities:

1. Chinatown visitor's center and memorial
2. Outdoor classrooms
3. Educational nature play / tot lot
4. Overlook utilizing existing change in elevation

Constraints:

5. No structures on Chinatown building footprints
6. Lack of tree canopy across site
7. Sculptural walk



Riverside Chinatown parcel and sidewalk conditions.



Existing building along Tequesquite Ave.



Original Riverside Chinatown buildings.
Horse-drawn vehicles in Chinatown, Riverside, California, ca. 1900. Photo courtesy of Special Collections & Archives, UCRLibraries, University of California, Riverside.

DESIGN METHODOLOGY

Action Plan Goals:

I. Increase the quantity and quality of culture-based climate action.

3 Key Strategies:

- Develop “guiding values” for culture-based climate action: a set of suggested practices for designing and implementing culture-based climate action (e.g. that such projects be science-based, connected to broader climate efforts, and is just and inclusive). Work with indigenous peoples and glean wisdom from landscape practices existing pre-fossil fuel era.

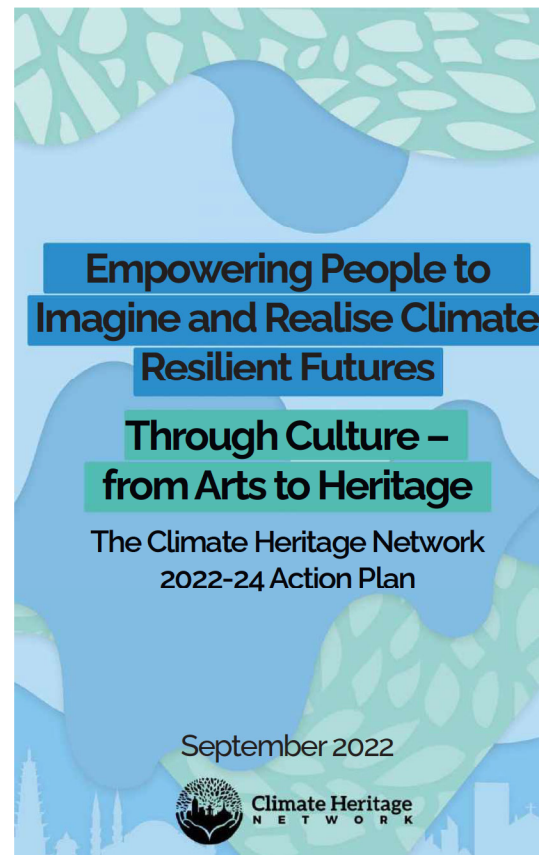
- Develop and promote tools to help advocates more effectively use culture, from art to heritage, to empower people to imagine and realize low carbon, just, climate-resilient futures, including promoting buildings reuse as climate action, the mainstreaming of culture into climate planning, and the role of culture in climate resilient sustainable development.

- Design and launch the culture initiative of the race to resilience to deepen understanding and action on the cultural dimensions of resilience while supporting efforts to catalyse a ste-change in global ambitions to build the resilience of four billion people by 2030.

II. Transform international climate policy via culture

- Stimulate engagement by cultural voices with key international climate policy issues.

Stimulate engagement by cultural voices at key climate policy forums.



ADOPTED BY THE CITY OF RIVERSIDE IN 2023

“The Plan prioritises support for rights-based, place-based, demand-side, and people-centred strategies for safeguarding and championing those elements of art, culture, and heritage that point the way to circular, regenerative ways of living not dependent on exploiting people and nature, and for challenging and interpreting those elements that have helped cause the climate

“Empowering People to Imagine and Realise Climate Resilient Futures through Culture - from Arts to Heritage.”

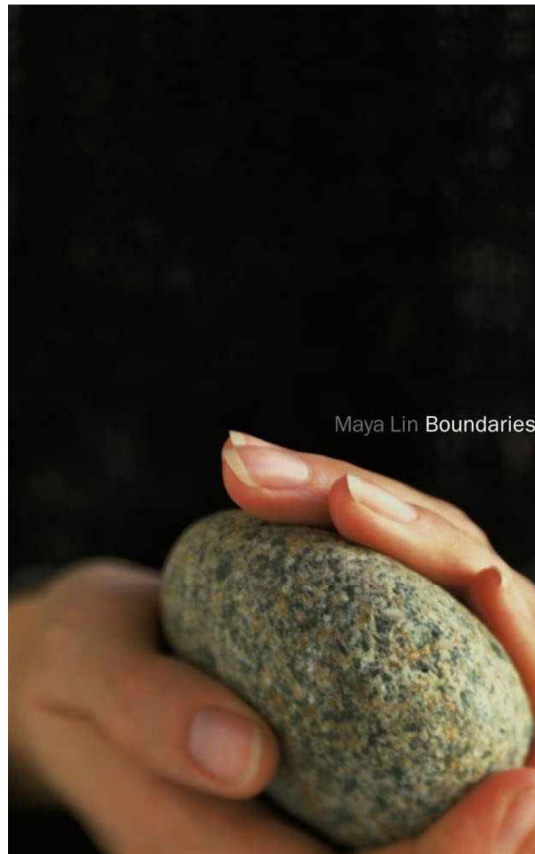
DESIGN METHODOLOGY

Key Takeaways:

1. There are many ways a landscape can tell its story. It can be physical - literally carved into the land or written on a wall. However, it can be more subtle and experiential, too. Often, a combination of the two yields the most powerful results. However, the methodology is often based on the desired effect and emotions that the landscape is meant to evoke.
2. Even renowned designers struggle with insecurity and imposter syndrome. Inspiration for designs is vast and varied, and there is no set-in-stone method to achieve something universally powerful, every single time. First, reflect on the purpose of the site and its intended use. What it is meant to communicate. What it is communicating to you. Do not go into the process with pre-conceived notions of what you want it to be; rather, be still and listen. Only then, armed with the desires of the land and the people, can a designer come to sensible and beautiful conclusions that benefit both communities and the land.
3. Simple is not boring; it is not a rigid minimalist ideal, in which a formula toward sparseness is almost religiously pursued. Rather, it is a composition of forms, materials, and textures that is fundamentally "quiet."
4. Use nature as a palette, and colors as materials: stone, water, wood, glass. Subtle changes in height, sound, texture inform the work. Just as important are the intangible aspects: light, air, sounds, and touch. They are about how a place feels.
5. The psychology behind design is about evoking an empathetic rather than a learned response - to tap into the intuitive responses to various changes in shape, scale, color, and texture. It is not a vocabulary of forms that need to be learned to be understood.

INTRODUCTION

ANALYSIS & EXPLORATION



Maya Lin Boundaries

FINDING COURAGE IN SIMPLICITY AND STRENGTH IN WORDS

Maya's process (which is often beginning a project in written essay form) speaks powerfully to me. I have always been a writer, and to observe a precedent of someone else processing and designing in such a manner imbues me with the courage to try it, too. In writing out my intentions and heart for this project is how I arrived at my "key message," which is the bridge inter-cultural gaps through the medium

"Each of my works originates from a simple desire to make people aware of their surroundings, not just the physical world but also the psychological world we live in."

THE VISION

PROCESS

DESIGN

THE FUTURE

DESIGN METHODOLOGY

Key Takeaways:

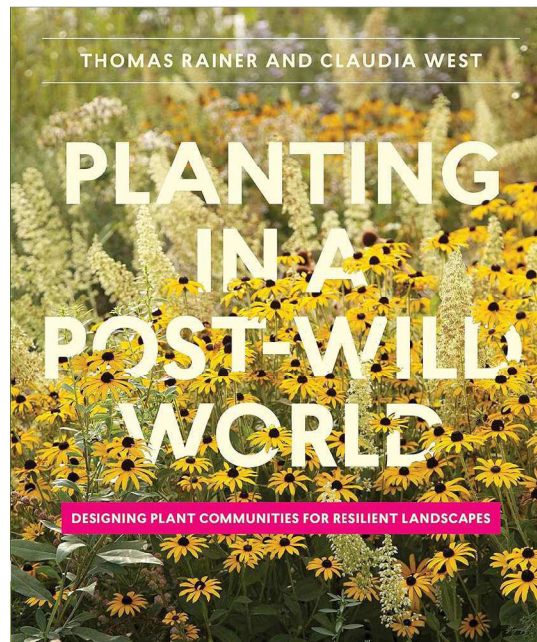
Although urban areas deviate drastically from their previously natural states, there is still great merit in learning from natural plant communities and systems to create a designed plant community.

Essential Principles:

1. Related populations, not isolated individuals. Plants are not objects to be placed, but they are a system of compatible species that interact with each other and the site.
2. Stress as an asset. Plants, even in the wild, are always subject to some kind of environmental stress. Each site is unique, and where one condition is detrimental for a certain plant, it could be the ideal habitat for another.
3. Cover the ground densely by vertically layering plants. Groundcovers do not cut it - create a diverse, interesting, and healthy ecosystem by implementing planting layers!
4. Make it attractive and legible. "Wild" landscapes do not have to appear unkempt or "sloppy" Employ strategies such as patterning, styling, and layering that create visual patterns that speak to order and beauty.
5. Management, not maintenance. Designed plant communities require a different kind of care than traditional maintenance. A management approach is actually less intensive than maintenance - only large-scale interventions are required!

INTRODUCTION

ANALYSIS & EXPLORATION



THE VISION

PROCESS

DESIGN

THE FUTURE

REWILDING THE URBAN LANDSCAPE

Re-creating thriving plant communities (that mimic and reflect those found in naturally occurring systems) within an urban landscape is possible! The human urban sprawl has taken over the face of the planet, wiping out some of our most precious natural resources. Now, we have an opportunity to re-create some of those spaces in an effort to combat climate change and the sharp decline that we

“Disturbed landscapes heal fast, driven by the powerful and ever-present spirit of the wild.”

CASE STUDY #1

“The garden was designed to catch changing seasons and light and synthesize them into a dramatic display of change.”

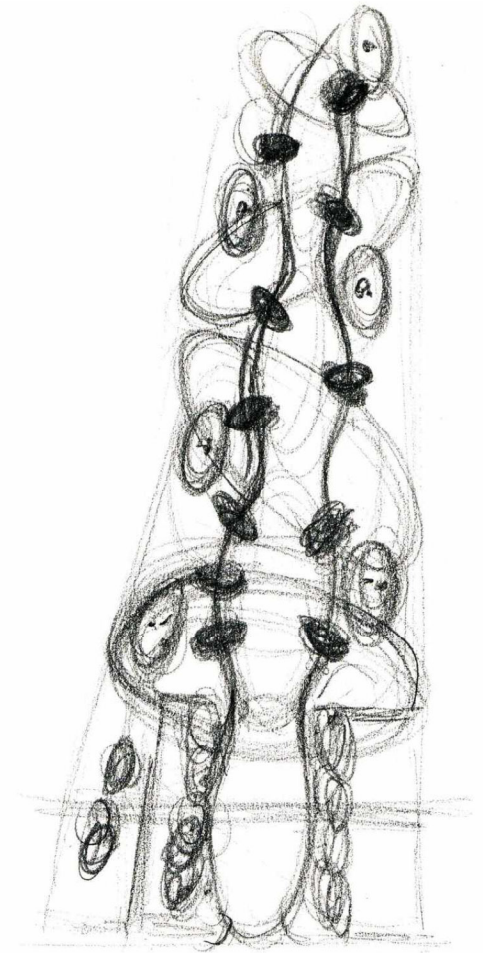
-LILA, 2020

ELLIPSE GARDEN

DESIGNER: KJELD SLOT | DENMARK | 2018

The Ellipse Garden shapes nature into a commentary on life: accepting and finding the beauty in constant change. Juxtaposition of light and shadow, of planes, of the manicured and the orderly.

Such a painterly and abstract approach can also be applied to this project site, which tells a similar story: of how change and differences can bring unity. It is a documentation of the passage of time and the beauty there in.



INTRODUCTION

ANALYSIS & EXPLORATION

THE VISION

PROCESS

DESIGN

THE FUTURE

CASE STUDY #2

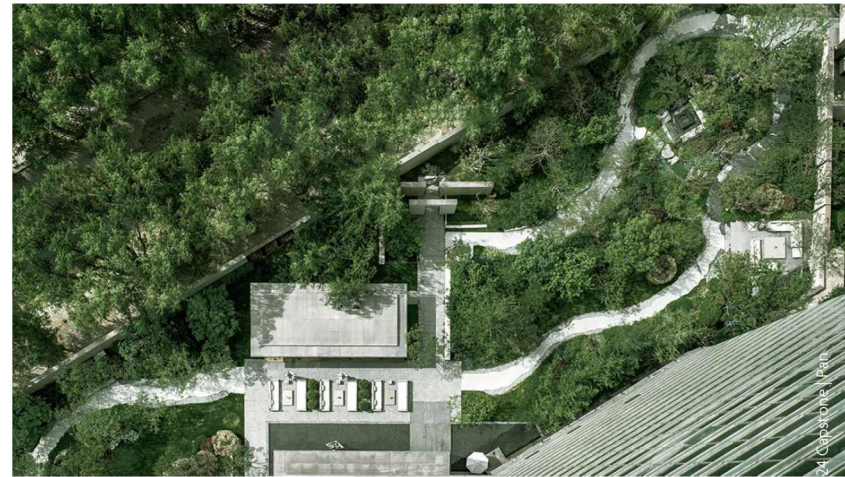
“It takes time to comprehend space, while light and shadows witness the passing of time.”

-Change Studio

LIGHT AND SHADOW

DESIGNER: CHANGE STUDIO | CHINA | 2017

Light and Shadow features an elegant and modern take on traditional Chinese design principles. Each material (hard and soft), though raw and simple, play a unique role in creating a sense of space and identity. The thoughtfulness within material selection adds layers of meaning that transcend traditional design. Each piece works together to form the plot - a progression or experience - that combine to create a whole story. This is a narrative through material and form.



INTRODUCTION

ANALYSIS & EXPLORATION

THE VISION

PROCESS

DESIGN

THE FUTURE

CASE STUDY #3

MAGNETEN SENSORY GARDEN

DESIGNER: MASU PLANNING | DENMARK | 2017

This healing garden is a “green oasis for people with special needs. In only a small footprint, the garden offers carefully designed sense stimulation on the user’s own terms.”


Features:

- Spaces of various sizes: intimate spots for one-on-one sessions, larger spaces for group activities, and areas for physical activities like balance exercises.
- A wide variety of natural experiences to stimulate all senses.
- Three distinct areas: a vegetable garden, a bonfire garden, and a flower garden. All three vary in size and stimulation for the senses. These areas also keep the change in seasons in mind. For example, the bonfire and greenhouse areas play important roles as gathering points during winter months.

“Magnetten Sensory Garden is a protected garden on deck that provides a variety of experiences that can be used in treatment and a garden that brings happiness and joy to the everyday life of its users.”

-MASU Planning

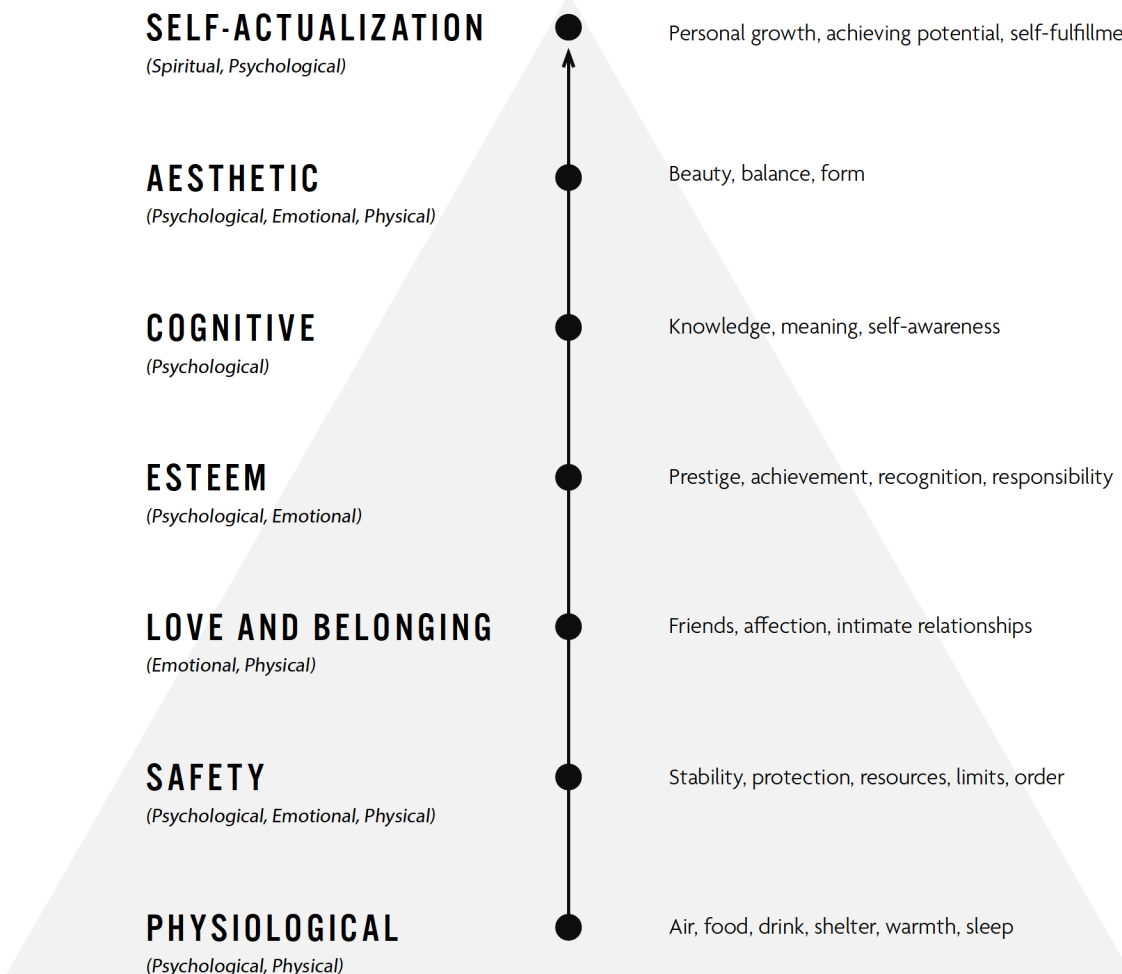




“The differences that separate human beings are nothing compared to the similarities that bond us together.”

- SOPHIE GREGOIRE TRUDEAU

MASLOW'S HIERARCHY OF NEEDS



The relationship between individual needs, communities, society, and the natural world :

Designing a cultural park comes with a series of challenges. How can a park celebrate a specific culture while remaining an inclusive community destination for all?

One approach that this project explores is to subconsciously bring people together through incorporating programming that promote human commonalities such as food, water, play, an appreciation for nature, and more.

“We are like islands in the sea, separate on the surface but connected in the deep.”

-William James

SHARING A MEAL

- Tea House (~1,000-2,000 SF per floor). A place to linger in solitude and with companionship.
- Cafe (~1,000-1,500 SF). Grab and go.
- Picnicing (lawn, picnic benches). ~6' separation between benches.



TAKING A WALK

- Nature loops / demo gardens in the sun. (2'x2' small edible garden squares are interesting)
- Paths through trees... an arcade. 8' vertical clearance min.
- Hardscaped promenade / multi-use plaza. Size / Capacity TBD.

BREAKING BARRIERS: PHYSICAL

Tackling larger social issues begins with change and healing in the individual. A series of investigations into how the landscape interacts and connects with the physical, emotional, psychological, and spiritual needs of individuals help shape a plan of action to enact change at a larger scale.

First, we have physical needs: shelter, food, air, warmth, sleep. These are all things that nature as healing places have been proven to provide and promote.

WONDERMENT OF NATURE

- Borrowed views
- Native and drought-tolerant planting to create a park with a series of gardens bursting with life.
- Demonstration gardens, bioswales, cultural gardens, edible gardens, dynamic art installations (kinetic sculptures to harness wind? Sun dials?)
- Nature-based play!



CELEBRATION OF LIFE GRIEF OVER LOSS

- Healing Gardens (size varies on context and users)
- Gathering areas of varying scales - a private nook in the garden -> a framed pavilion -> open swathes of lawn -> multi-use plazas for community events.
- Life is precious - create spaces that make every moment count.

BREAKING BARRIERS: EMOTIONAL

Humans need so much more than food and shelter - in fact, the craving for love and acceptance has been known to trump biological demands that sustain our bodies. One can go as far to say that the craving for love and acceptance is an actual biological demand, as they release hormones (dopamine, oxytocin, serotonin, etc.) that are imperative to human happiness. Only when a person feels valued and accepted, can they go on to value and accept others.

CHOICE-MAKING

- Present options for exploration and decision-making: multiple paths that feature different programming and/or stimuli.
- An ever-changing narrative through the landscape that engages the audience and encourages interaction.
- Inspiring stewardship of the earth and care for one another. Empowerment to make good choices.



GROWTH + REFLECTION

- Thought-provoking themes and narratives woven into the landscape to prompt internal and external conversations and reflection.
- Reflection as a metaphor, but also as a physical element with which to interact. A polished stone tablet, a metallic disc, or a reflecting pool. Reflect what? Sky, tree canopy, borrowed views, society... oneself.



BREAKING BARRIERS: PSYCHOLOGICAL

Psychological needs engage the intellect and tie directly into one's identity and self worth. Landscapes can act as a platform to stimulate growth and introspection.

Nature has a way of connecting with the human mind to facilitate moments of clarity and awareness that are much more difficult to ascertain without the influence of natural elements. Think the sun on your skin, the wind in your hair, and the salt spray on your tongue. These are invigorating and often fundamental human experiences.

CONNECTING WITH THE WORLD AROUND US

- This is a combined effort between creating intimate spaces for reflection and gatherings, capitalizing on the awe-inspiring beauty of nature, and providing thought-provoking prompts through landscape narratives that trigger a desire for something greater than and far beyond oneself.



REVERENCE + PEACE

- Fountains, babbling brooks, flowing streams (size and scale depend on the desired experience)
- A shaded canopy overhead with birdsong as nature's choir - a chapel set within nature.
- A vivid sunset that exudes splendor.

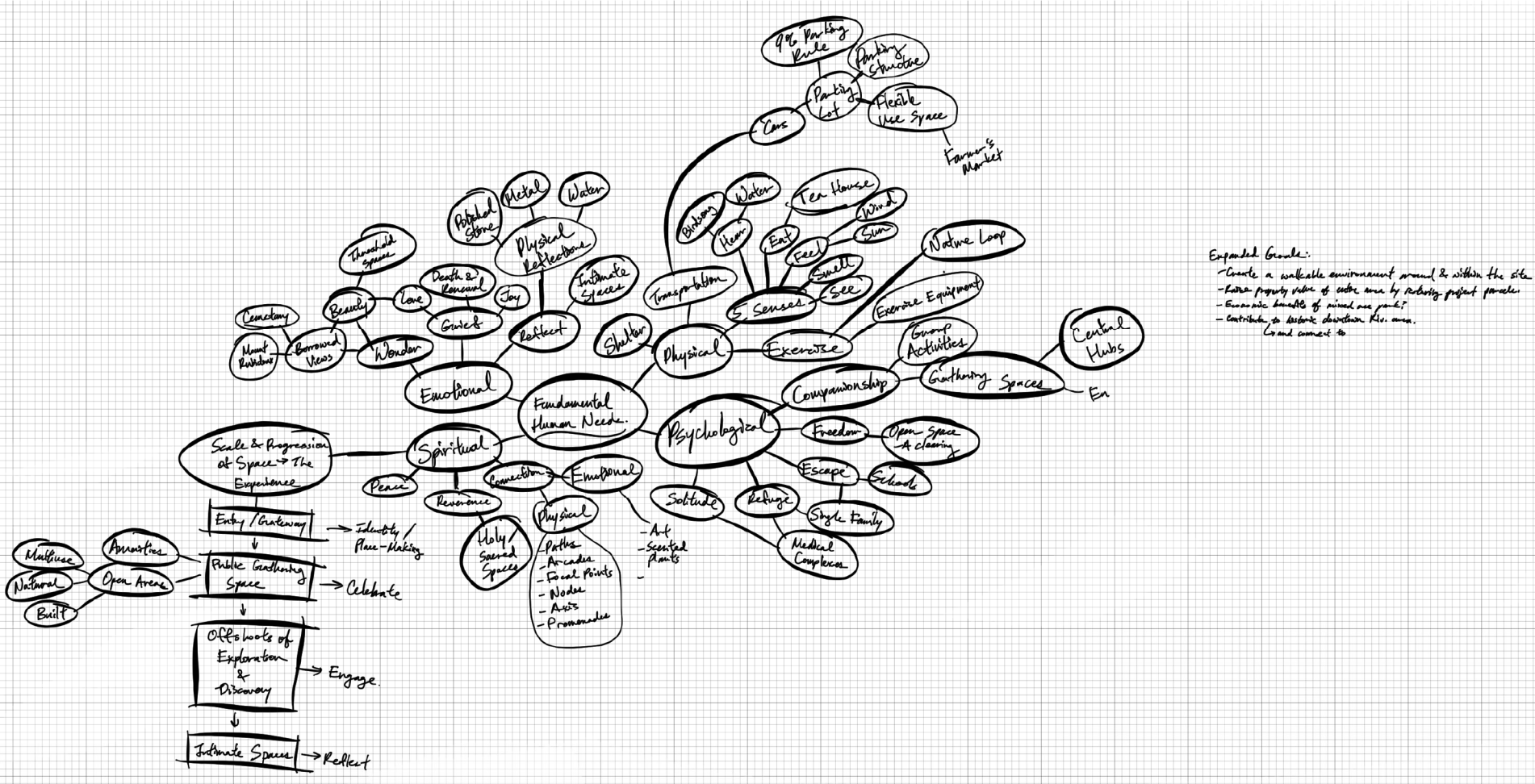


BREAKING BARRIERS: SPIRITUAL

How do we find meaning in life? Is the pursuance of one's own happiness enough?

What is most important? Is it money, fame, power... or is it the people we love and choose to share life with? Believing in a greater purpose that extends beyond oneself to create ripples and positive changes in society? How can we be that change?

SITE PROGRAMMING MIND MAP



INTRODUCTION

ANALYSIS & EXPLORATION

THE VISION

PROCESS

DESIGN

THE FUTURE

DESIGN PROCESS

THE VISION: REALIZED

The Design Process is an exciting and engaging time where site conditions, environmental and community factors, as well as the story-telling narrative of the site come together - puzzle pieces falling into place - to shape a park design that is tailor-made for the community and inclusive for all.



BUBBLE DIAGRAMS | 3 Concepts

● Connect ● Heal ● Educate

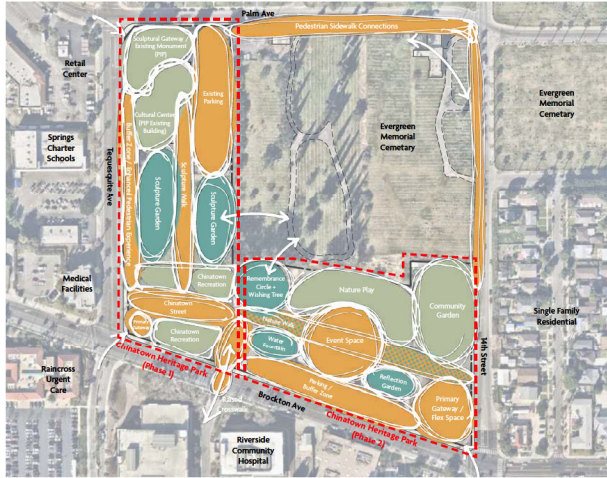
SCALE: 1"=160'-0"
0' 80' 160' 320'



FENG SHUI

“Agricultural Roots”

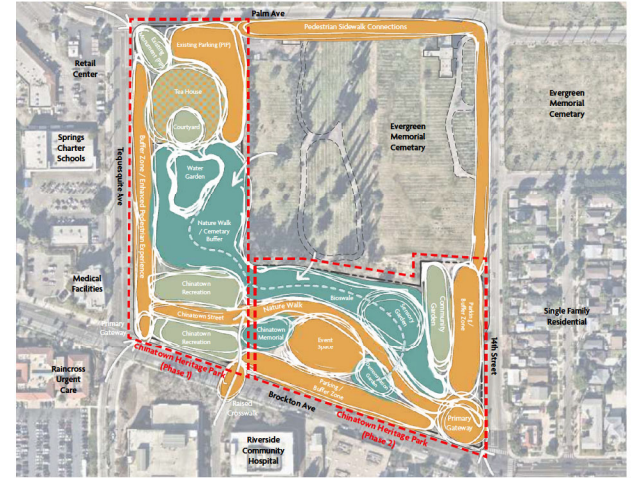
This concept taps into these agricultural roots by incorporating a rice demonstration facility and rice patty research plot. Rice is a staple in countless cuisines, and food is one of the most effective mediums to bring people together.



FENG SHUI

“Balance and Harmony”

Feng Shui emphasizes balance and harmony between people, nature, form, and function. This option is physical expression of balance, with uses branching out as datum from central spines.



FENG SHUI

“The Way of Wind and Water”

Feng Shui strives to connect human landscapes with the natural world by incorporating forms and practices found within nature. In this metaphor, the forms are specifically derived from wind and water.

BUBBLE DIAGRAM | Concept 1

● Connect
 ● Heal
 ● Educate



FENG SHUI “Agricultural Roots”

Feng Shui is an ancient environmental science that facilitated efficient agricultural systems in China.

This concept taps into these agricultural roots by incorporating a rice demonstration facility and rice patty research plot. Rice is a staple in countless cuisines, and food is one of the most effective mediums to bring people together.

PROS

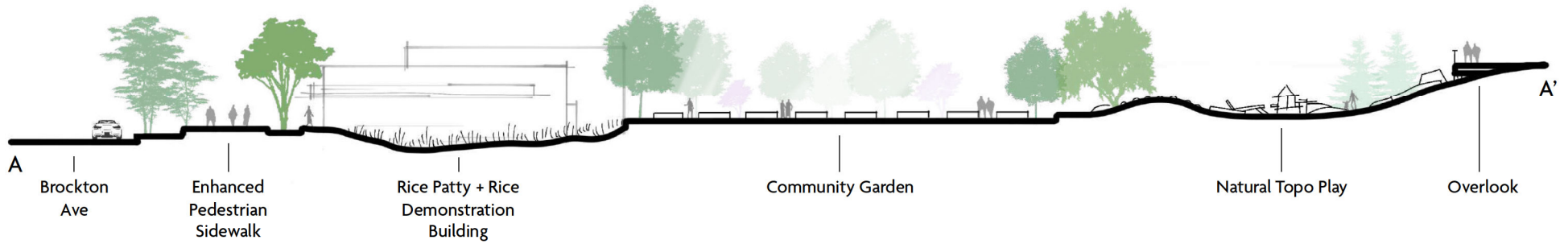
- Re-use of multiple buildings on-site is a sustainable practice.
- Rice demonstration facility and research plots creates jobs, encourages community involvement, and has revenue-generating potential.
- Continuous enhanced frontage along Brockton Ave and Tequesquite Ave has great place-making value.
- Garden of rebirth creates an asphalt & sculpture garden out of a derelict plot (reduces waste). A phoenix - one of the four cardinal creatures in Feng Shui - symbolizes rebirth, and the garden is in the shape of its wings.
- Uses natural elements to establish identity: wishing tree, utilizing natural topography to create a playground and overlook, etc.

CONS

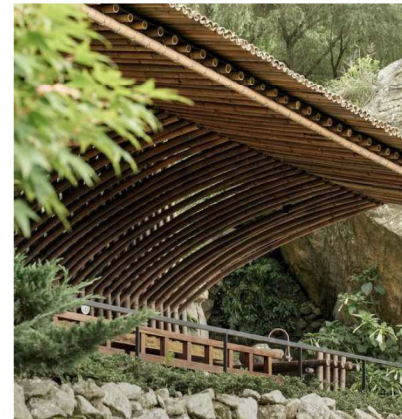
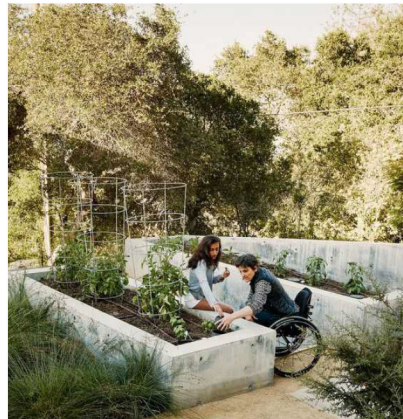
- Lack of a buffer between Chinese Heritage Park and Evergreen Memorial Cemetary (considered very “Yin” in Feng Shui; can be unlucky).
- Provided parking may be insufficient for proposed uses.
- Rice demonstration facility and research plots are high-maintenance.



SECTION ELEVATION | Concept 1



KEY MAP



INTRODUCTION

ANALYSIS & EXPLORATION

THE VISION

PROCESS

DESIGN

THE FUTURE

BUBBLE DIAGRAM | Concept 2

● Connect
 ● Heal
 ● Educate



FENG SHUI “Balance and Harmony”

Feng Shui emphasizes balance and harmony between people, nature, form, and function.

This option is physical expression of balance, with uses branching out as datum from central spines.

PROS

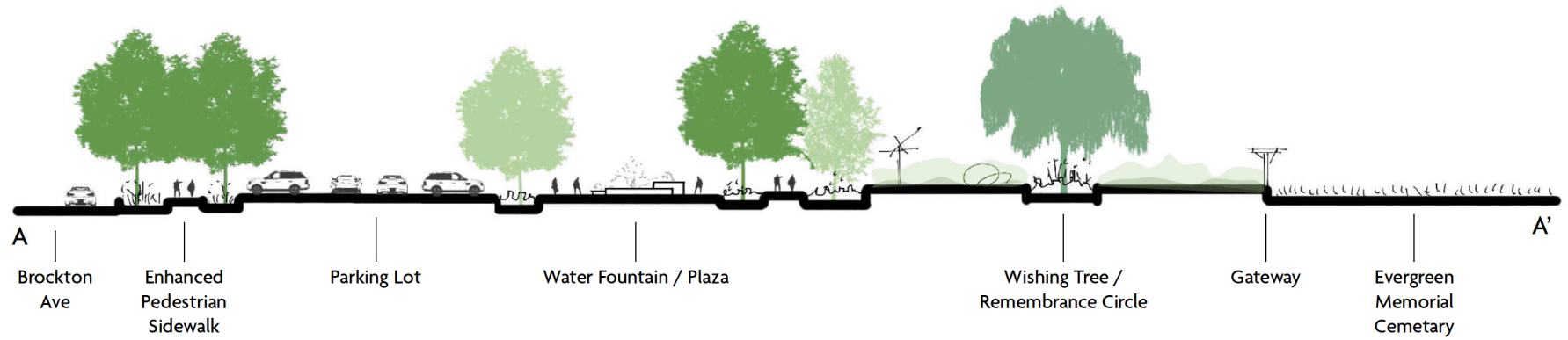
- Central spines (promenades) help create a circulation hierarchy and clarity through the site, working with the natural form and orientation of the natural shape of the site.
- Sculpture garden and walk evokes a sense of reverence and facilitates reflection while leading up to the cultural center / Chinatown recreation.
- Raised crosswalk creates a direct connection to RCH and calms traffic along Brockton Ave, which is a busy arterial collector.
- Water fountain and reflection garden areas cater to the users of RCH.

CONS

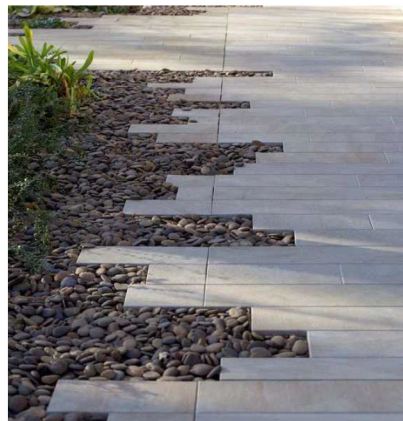
- Lack of a buffer between Chinese Heritage Park and Evergreen Memorial Cemetary (considered very “Yin” in Feng Shui; can be unlucky).
- The linearity of the promenades goes against certain Feng Shui principles, which is about mimicking nature and creating a sense of journey. Long, straight paths may feel like too much of a “straight shot” and allow for health and prosperity to drain out of the site.
- Water fountain and reflection garden may be too close to the event space, which might get noisy.



SECTION ELEVATION | Concept 2



KEY MAP



INTRODUCTION

ANALYSIS & EXPLORATION

THE VISION

PROCESS

DESIGN

THE FUTURE

BUBBLE DIAGRAM | Concept 3

● Connect
 ● Heal
 ● Educate



FENG SHUI “The Way of Wind and Water”

Feng Shui strives to connect human landscapes with the natural world by incorporating forms and practices found within nature. A multitude of design principles can be drawn from this design philosophy, of which wind and water is its namesake:

1. Facilitating the flow of form and energy through the site.
2. Creating an accessible site that promotes freedom of circulation.
3. A design approach that respects and mimics nature, bridging the gap between modern cities and the natural world.

PROS

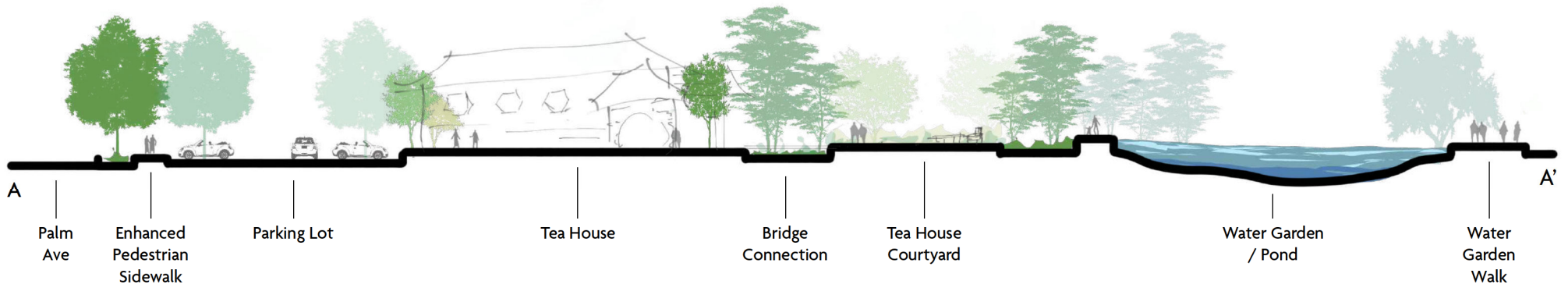
- A native habitat courses through the site, acting as a natural buffer between the site amenities (as well as RCH) and Evergreen Memorial Cemetary.
- Strikes a good balance between connection, healing, and education.
- Meandering spine extends from the restored Chinatown Street creates a sense of journey, complementing the natural form of the adjacent bioswale.
- Primary gateway at 14th and Brockton pulls the pedestrian circulation into the site, which softens the harsh corner condition.
- Tea house generates revenue and brings the community together, creating a natural and engaging experience of learning about the Chinese culture.

CONS

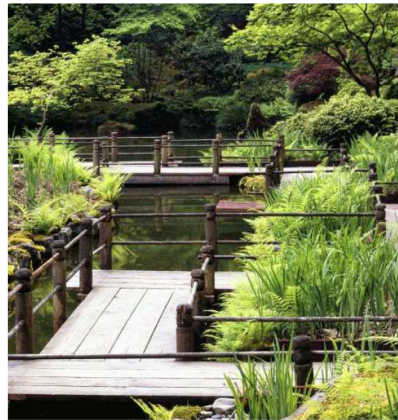
- Minimal re-use of existing site structures.
- Water garden may be maintenance-intensive.
- Chinatown Memorial may benefit from a more secluded location, away from the street and the event space.



SECTION ELEVATION | Concept 3



KEY MAP



INTRODUCTION

ANALYSIS & EXPLORATION

THE VISION

PROCESS

DESIGN

THE FUTURE

FINAL DESIGN METAPHOR: CONCEPT 3

FENG SHUI | “The Way of Wind and Water”

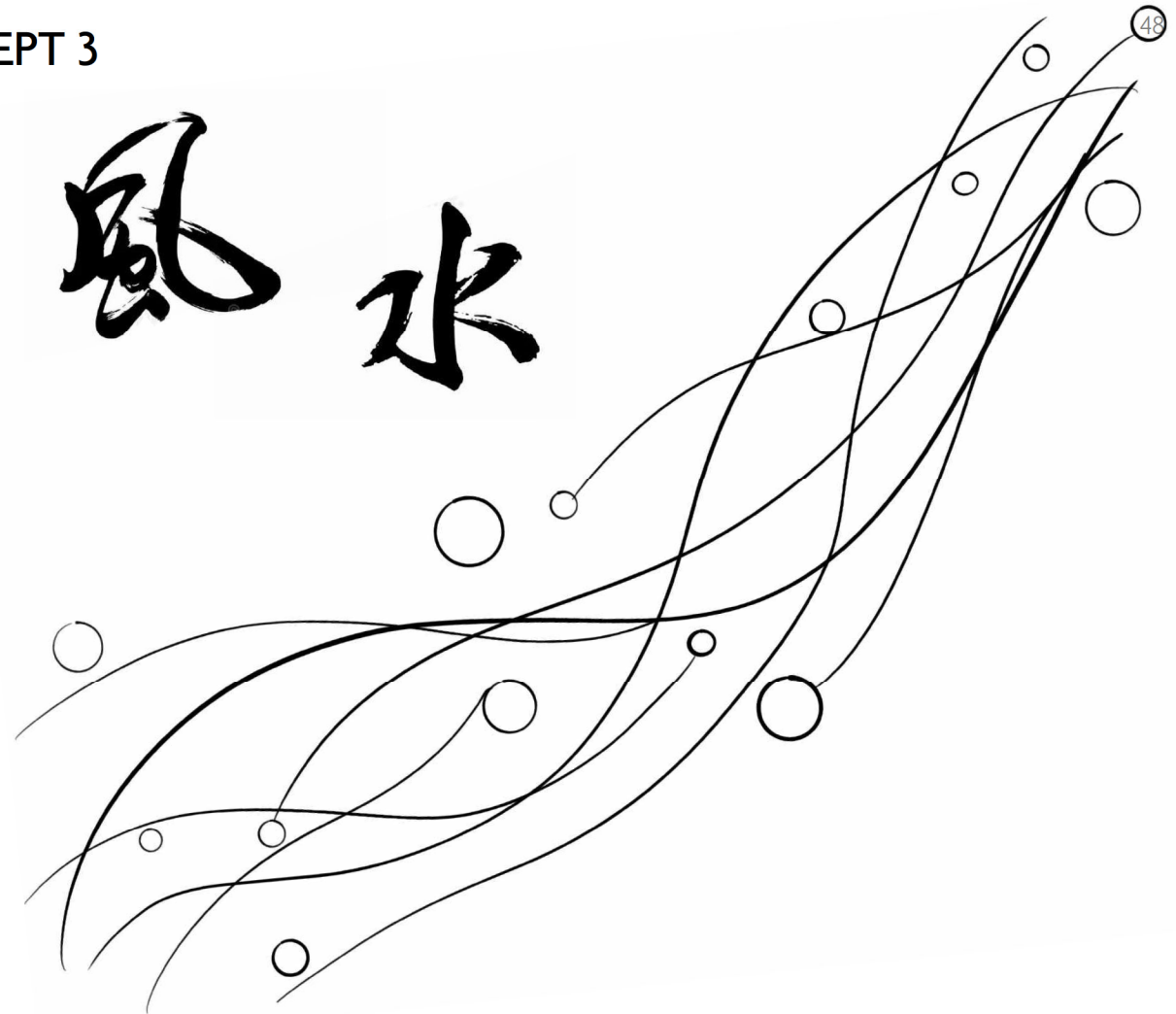
Originating since the 9th century BC, Feng Shui has been an Chinese practice for arranging buildings, objects, and space in an environment to achieve health, harmony, and balance.

The project site fulfills all three Feng Shui criteria for the ideal site location and orientation:

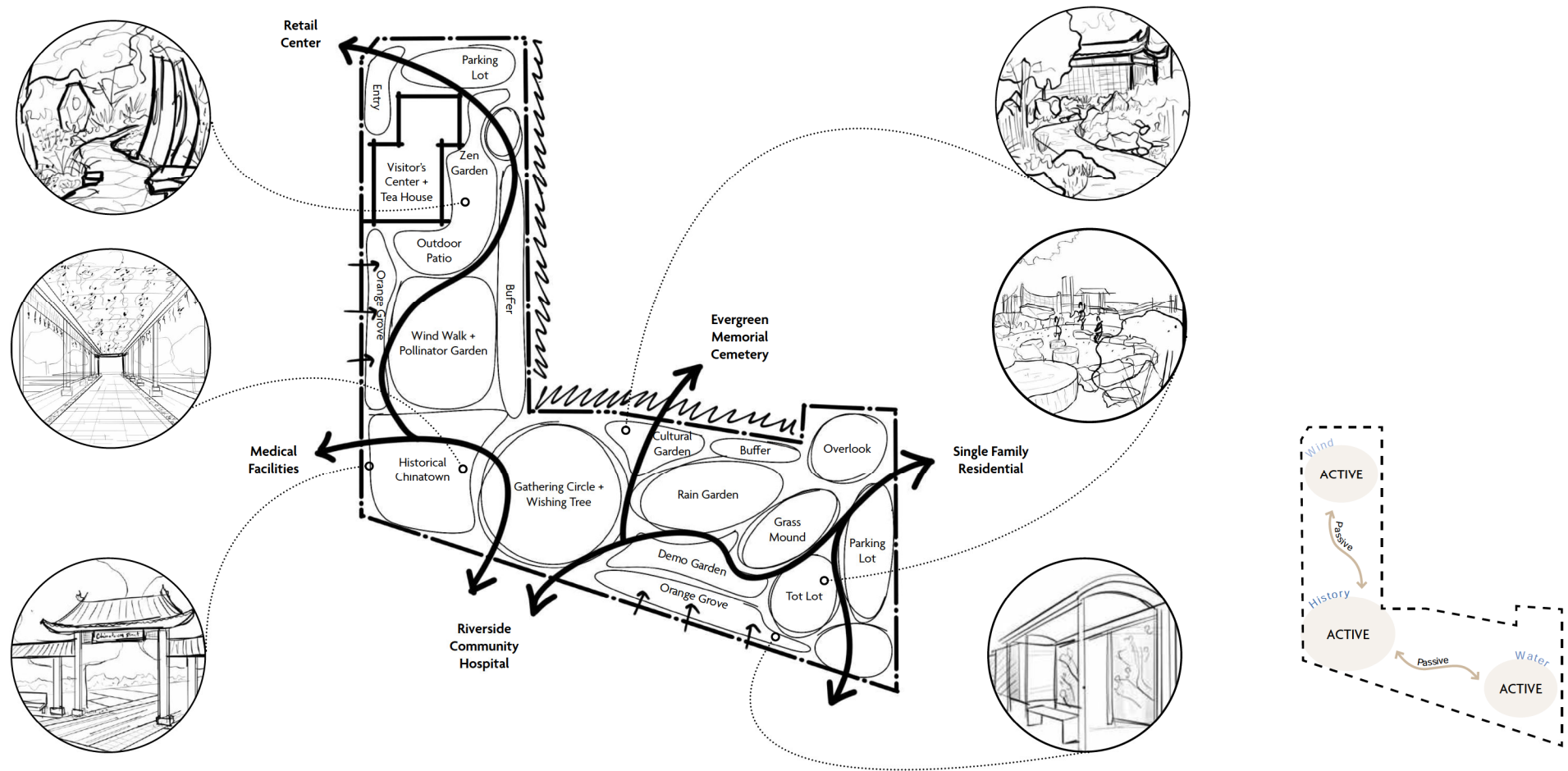
- Proximity to a river
- Protection from the hills
- Safety from floods

Design Principles:

- Geometry and Form
- The Flow of Chi
- Natural Materials and Patterns



CONCEPTUAL DIAGRAM | The Way of Wind and Water



INTRODUCTION

ANALYSIS & EXPLORATION

THE VISION

PROCESS

DESIGN

THE FUTURE

INSPIRATION IMAGERY



Overlook



EDUCATE Community Garden



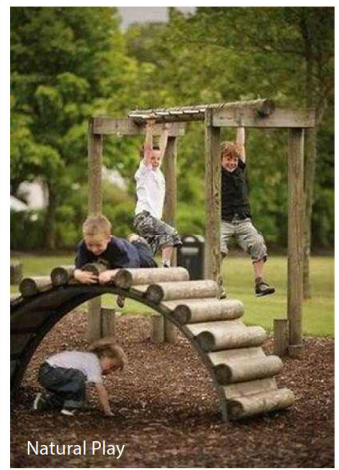
Native / Drought-Tolerant Planting



Naturalized Infrastructure



Gathering Spaces



Natural Play



Cultural Tea House

CONNECT



Multi-Use Plaza



Shaded Seating



Cultural Garden

HEAL

INTRODUCTION

ANALYSIS & EXPLORATION

THE VISION

PROCESS

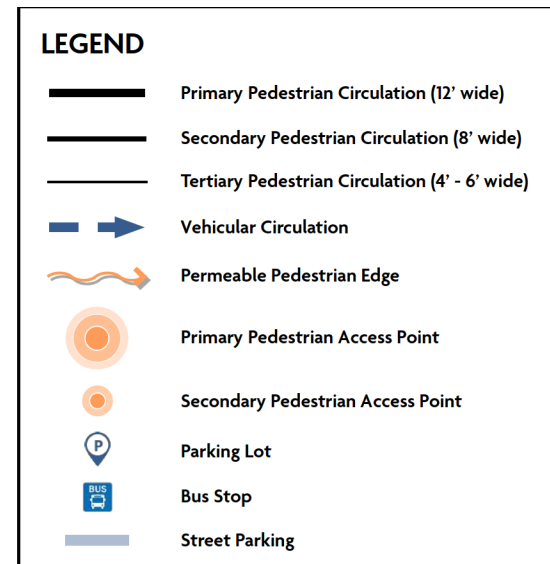
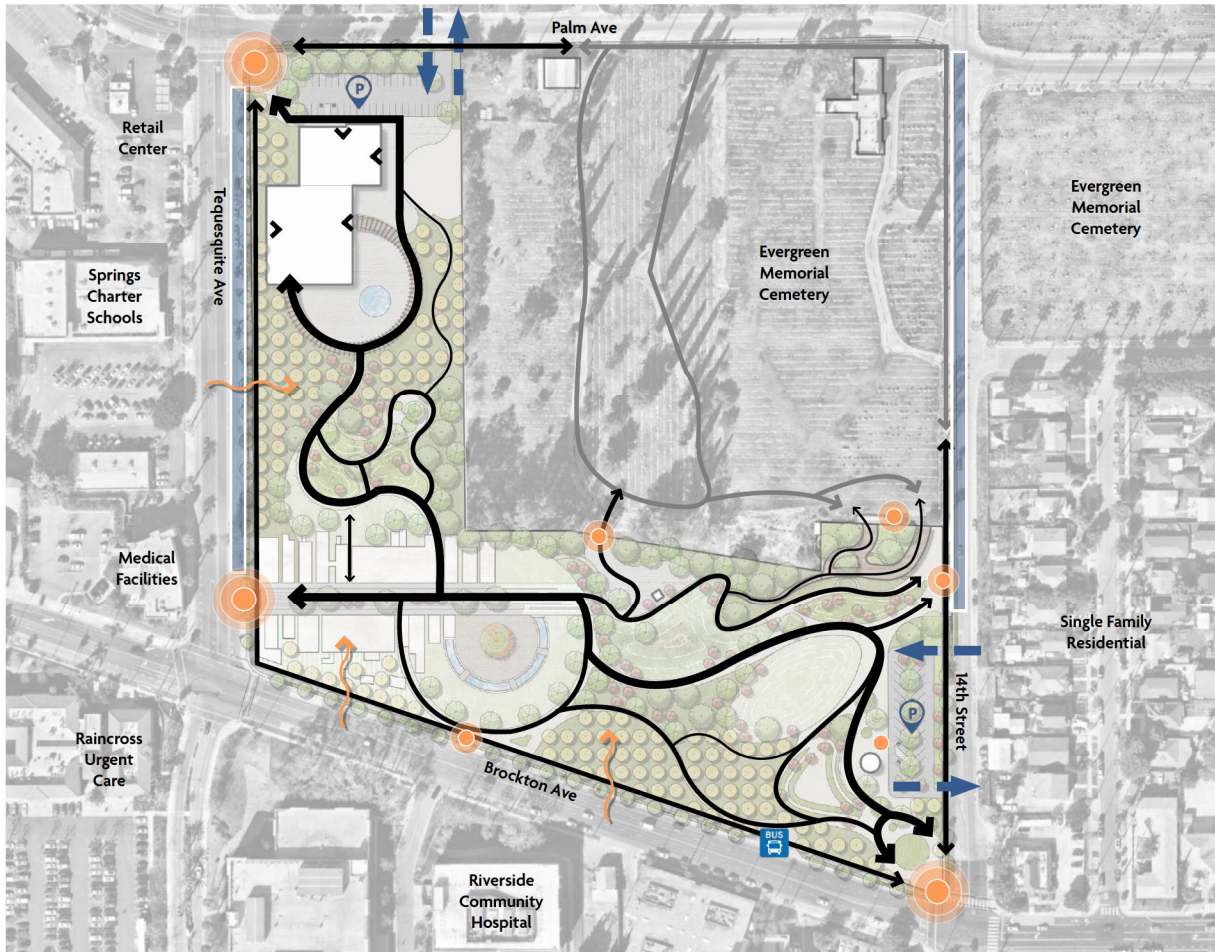
DESIGN

THE FUTURE

RIVERSIDE CHINATOWN HERITAGE PARK



CIRCULATION PLAN



INTRODUCTION

ANALYSIS & EXPLORATION

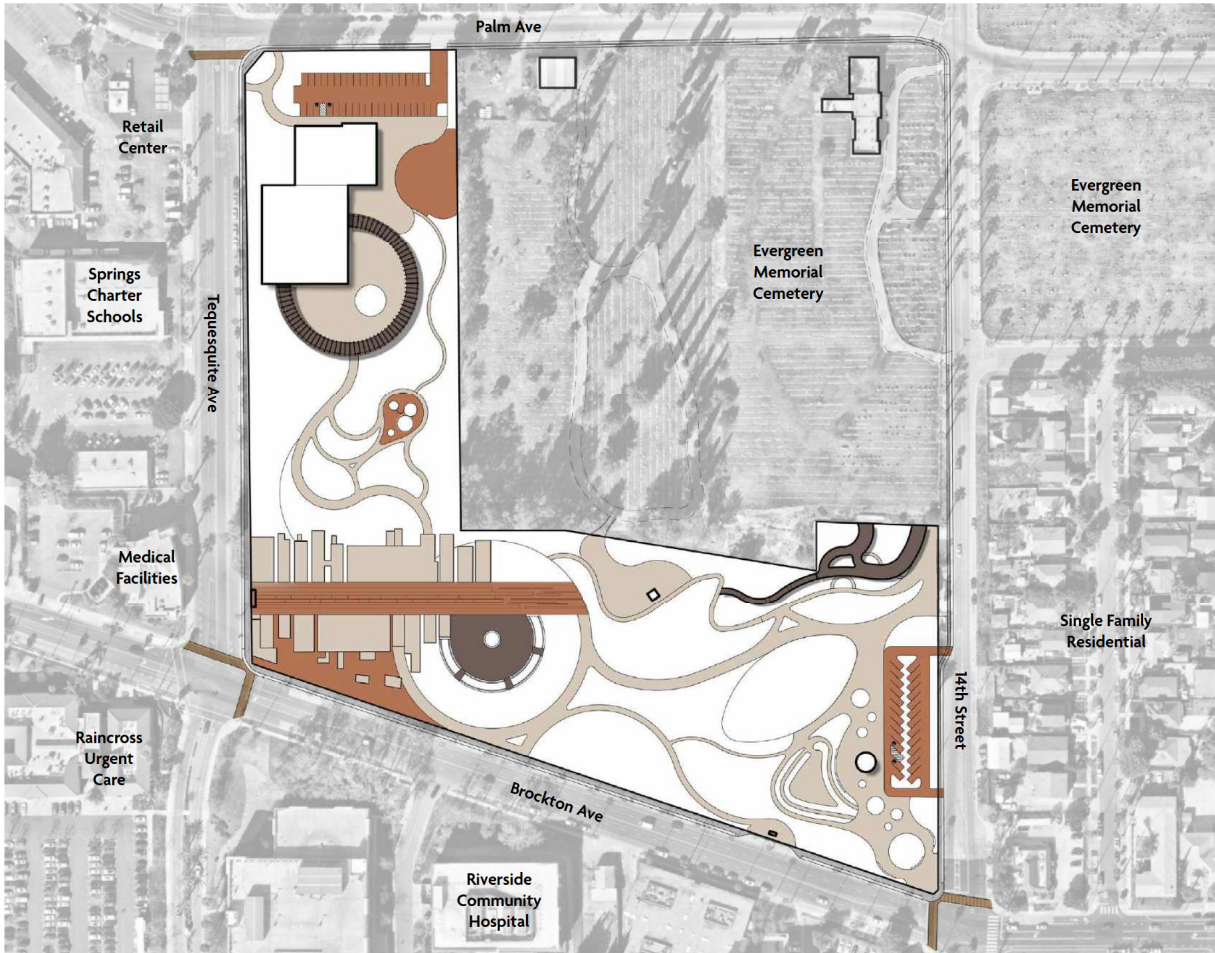
THE VISION

PROCESS

DESIGN

THE FUTURE

HARDSCAPE PLAN



INTRODUCTION

ANALYSIS & EXPLORATION

THE VISION

PROCESS

DESIGN

THE FUTURE

TREE PLAN AND PALETTE



Citrus x sinensis



Cercis occidentalis



Quercus agrifolia



Ginkgo biloba



Platanus racemosa



Pistacia chinensis

INTRODUCTION

ANALYSIS & EXPLORATION

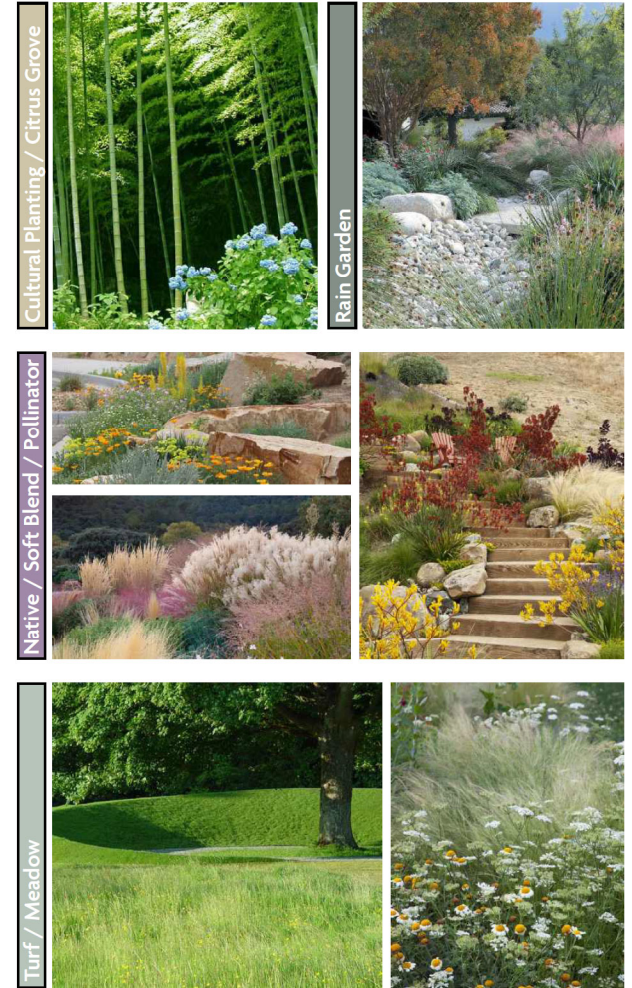
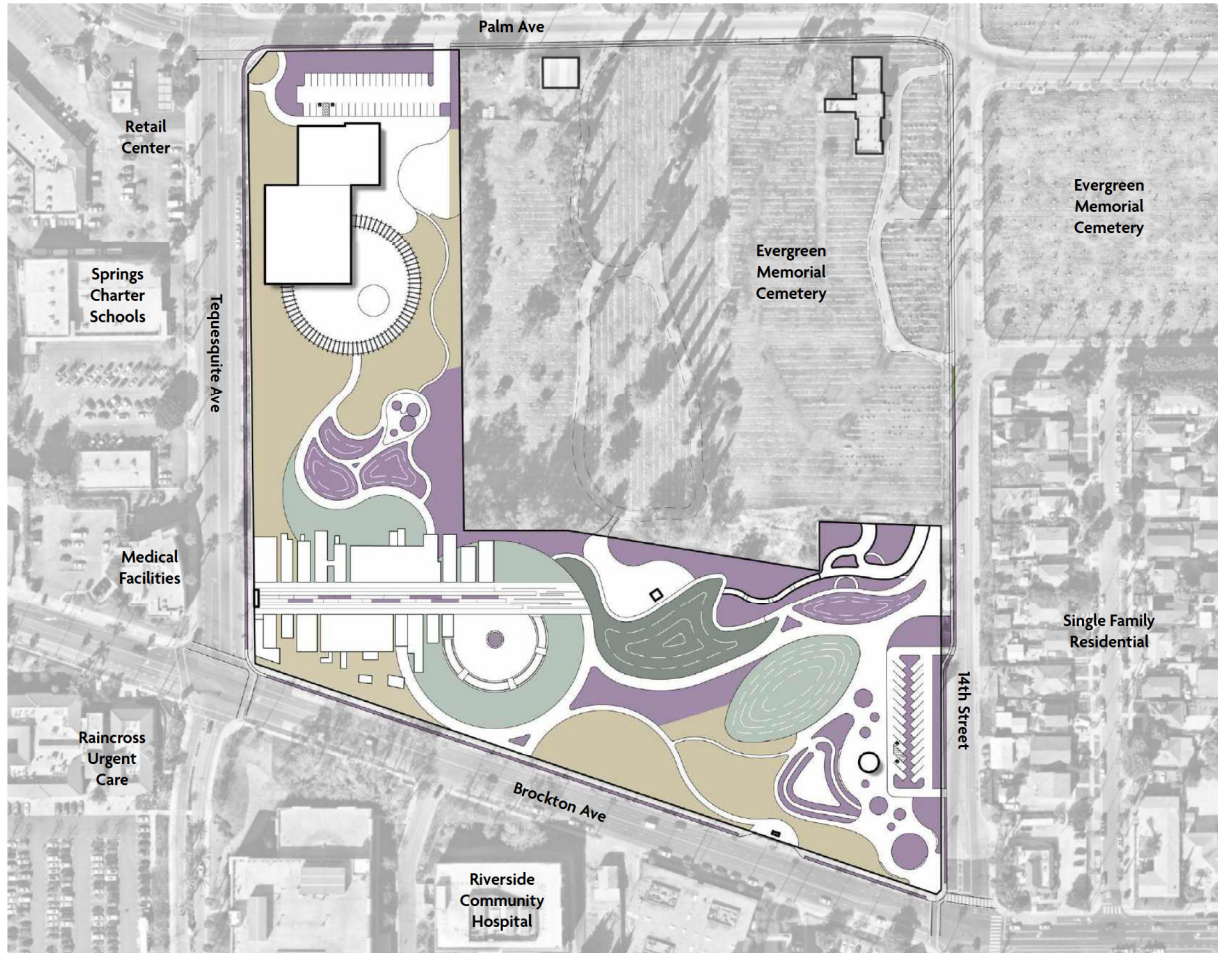
THE VISION

PROCESS

DESIGN

THE FUTURE

PLANTING PLAN AND PALETTE



INTRODUCTION

ANALYSIS & EXPLORATION

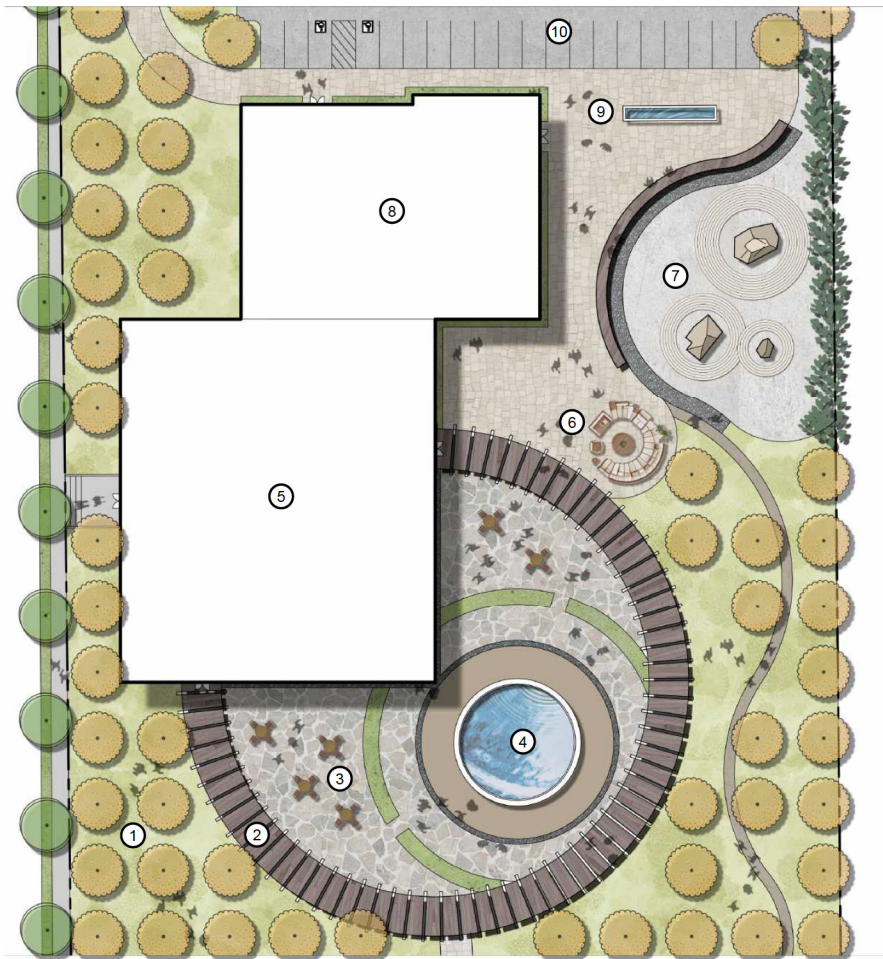
THE VISION

PROCESS

DESIGN

THE FUTURE

WELCOME CENTER & TEA HOUSE ENLARGEMENT

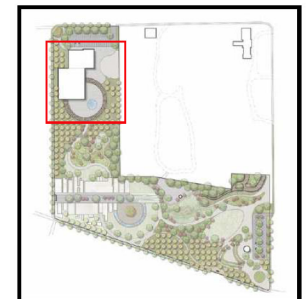


LEGEND

- ① Orange Grove
- ② Trellis Walk
- ③ Courtyard Seating
- ④ Reflecting Pool
- ⑤ Visitor's Welcome Center (Repurposed Existing Building)
- ⑥ Lounge Seating
- ⑦ Rock Garden
- ⑧ Tea House
- ⑨ Water Fountain
- ⑩ Parking Lot



KEY MAP



INTRODUCTION

ANALYSIS & EXPLORATION

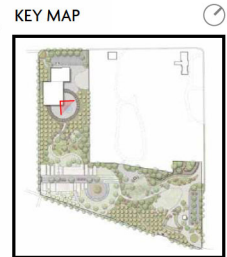
THE VISION

PROCESS

DESIGN

THE FUTURE

TEA HOUSE PERSPECTIVE



INTRODUCTION

ANALYSIS & EXPLORATION

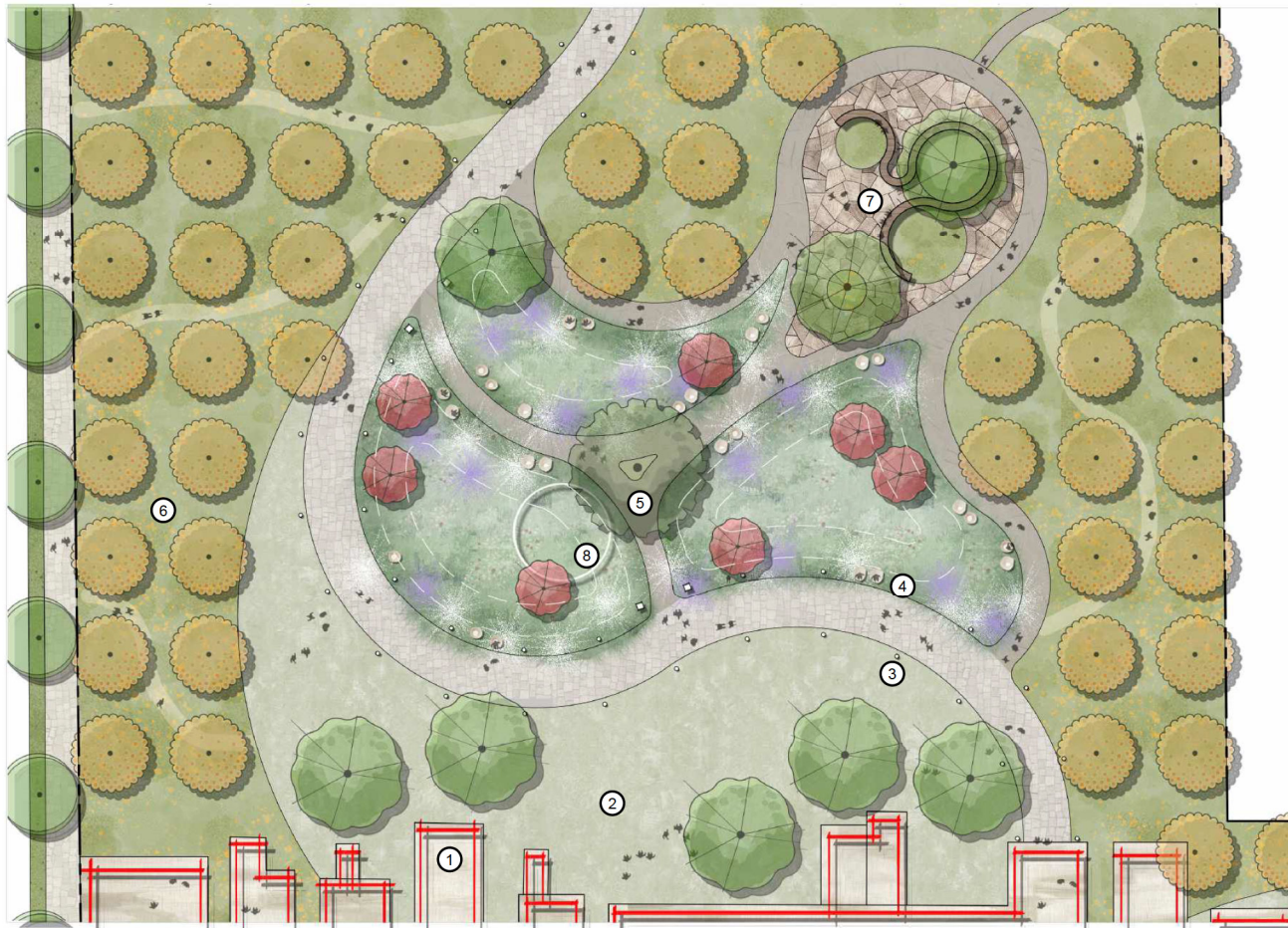
THE VISION

PROCESS

DESIGN

THE FUTURE

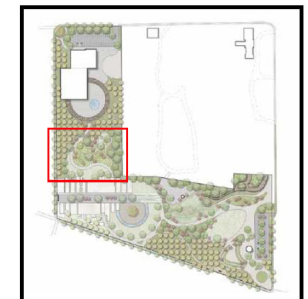
WIND WALK ENLARGEMENT



LEGEND

- ① Original Chinatown Story Poles and Plaza
- ② Open Lawn / Flex Space
- ③ Pathway Lighting
- ④ Flower Seating
- ⑤ Wind Walk / Sculpture Garden
- ⑥ Orange Grove - Permeable Pedestrian Edge
- ⑦ Serpentine Bench / Picnic Area
- ⑧ Wind Chime Sculpture

KEY MAP



INTRODUCTION

ANALYSIS & EXPLORATION

THE VISION

PROCESS

DESIGN

THE FUTURE

WIND WALK PERSPECTIVE



INTRODUCTION

ANALYSIS & EXPLORATION

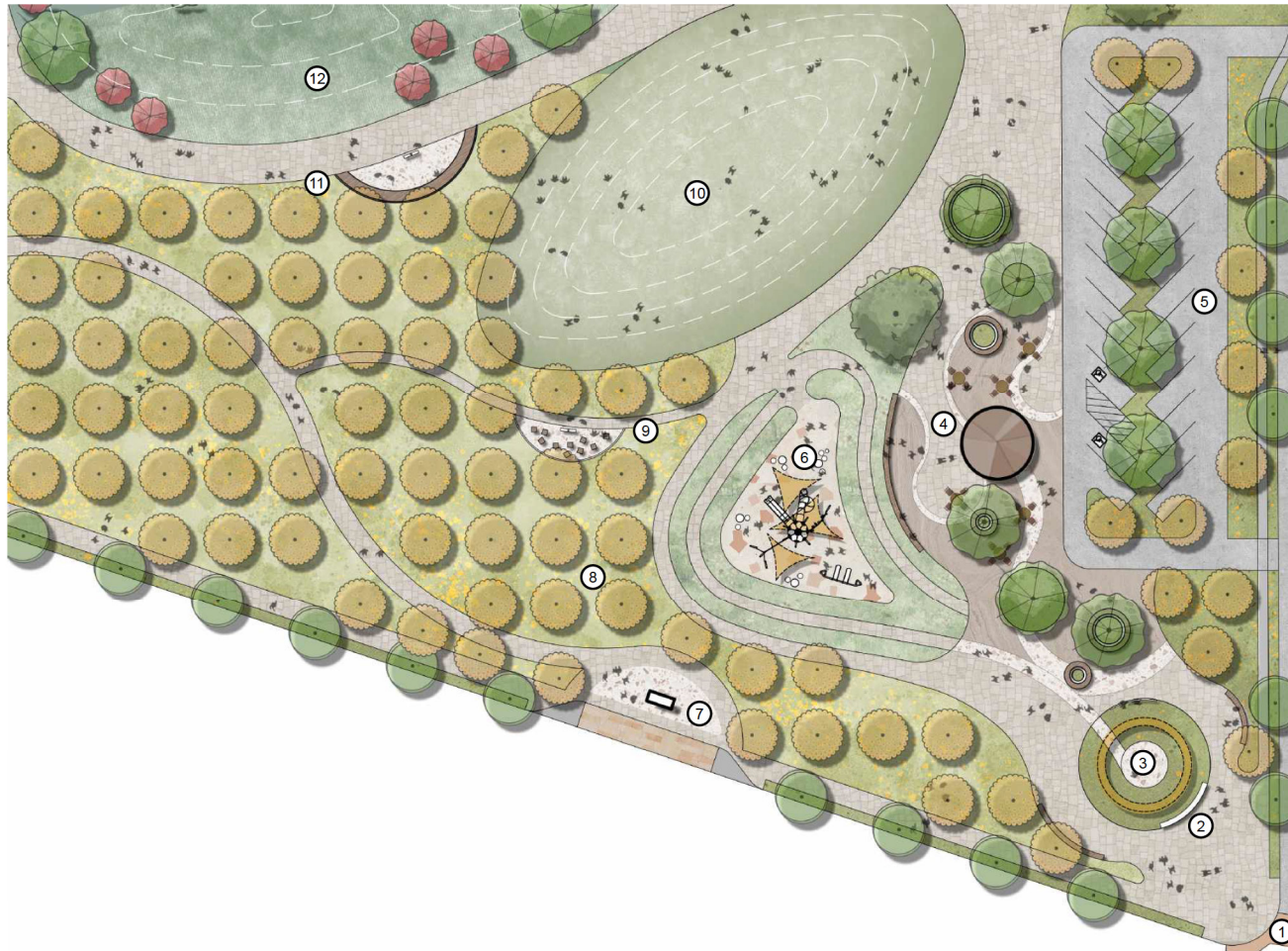
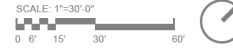
THE VISION

PROCESS

DESIGN

THE FUTURE

WATER WAY ENLARGEMENT



LEGEND

- ① Enhanced Pedestrian Crossing
- ② Chinatown Park Monument Signage
- ③ Sculptural Art
- ④ Orange Juice Bar / Kiosk / Restroom
- ⑤ Parking Lot
- ⑥ Tot Lot
- ⑦ Bus Stop
- ⑧ Orange Grove - Permeable Pedestrian Edge
- ⑨ Orange Grove Education Nook
- ⑩ Grass Mound
- ⑪ Rain Garden Education Nook
- ⑫ Rain Garden

KEY MAP



INTRODUCTION

ANALYSIS & EXPLORATION

THE VISION

PROCESS

DESIGN

THE FUTURE

WATER WAY PERSPECTIVE



INTRODUCTION

ANALYSIS & EXPLORATION

THE VISION

PROCESS

DESIGN

THE FUTURE

WATER WAY SECTION ELEVATION



A

Water Way
(12' Walk)

Grass Mound

Water Way
(8' Walk)

Native Planting
Berm

Flexible Use
Gathering Area

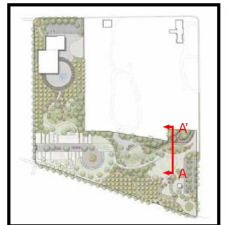
Walk

Slope
Restoration

Overlook

A'

KEY MAP



INTRODUCTION

ANALYSIS & EXPLORATION

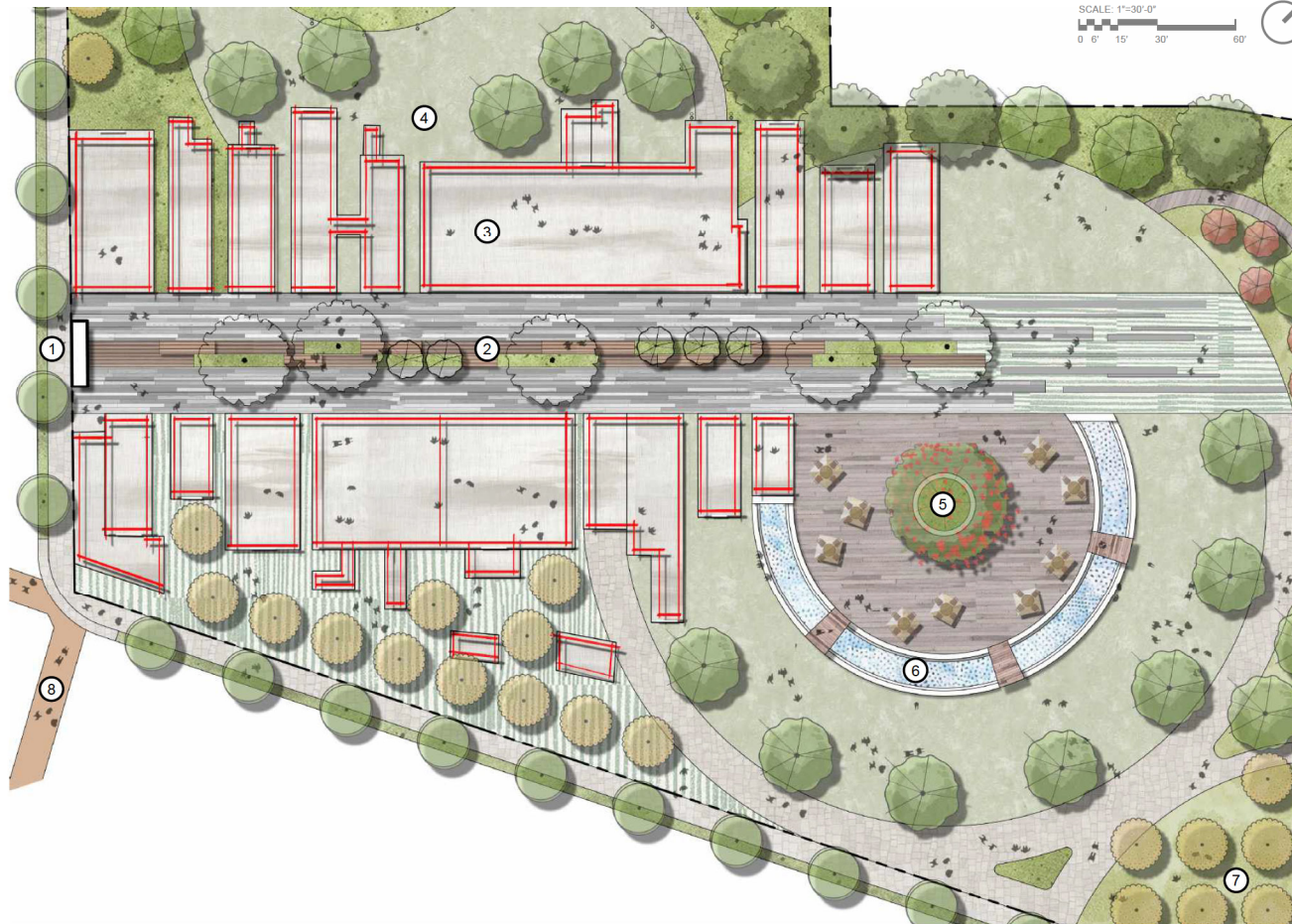
THE VISION

PROCESS

DESIGN

THE FUTURE

CHINATOWN STREET ENLARGEMENT



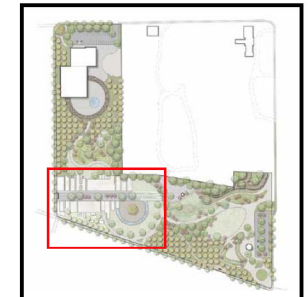
Horse-drawn vehicles in Chinatown, Riverside, California, ca. 1900. Photo courtesy of Special Collections & Archives, UCRL Libraries, University of California, Riverside.

Red Story Poles are a sculptural recreation of Riverside's Second Chinatown.

LEGEND

- ① Chinatown Gate
- ② Linear Pavers, Planting & Seating
- ③ Original Chinatown Story Poles and Plaza
- ④ Open Lawn / Flex Space
- ⑤ Wishing Tree
- ⑥ Fountain
- ⑦ Orange Grove
- ⑧ Enhanced Pedestrian Crossing

KEY MAP



INTRODUCTION

ANALYSIS & EXPLORATION

THE VISION

PROCESS

DESIGN

THE FUTURE

CHINATOWN STREET ENTRANCE PERSPECTIVE



INTRODUCTION

ANALYSIS & EXPLORATION

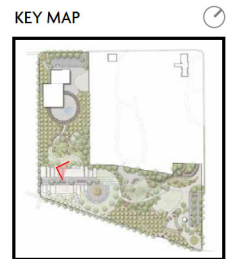
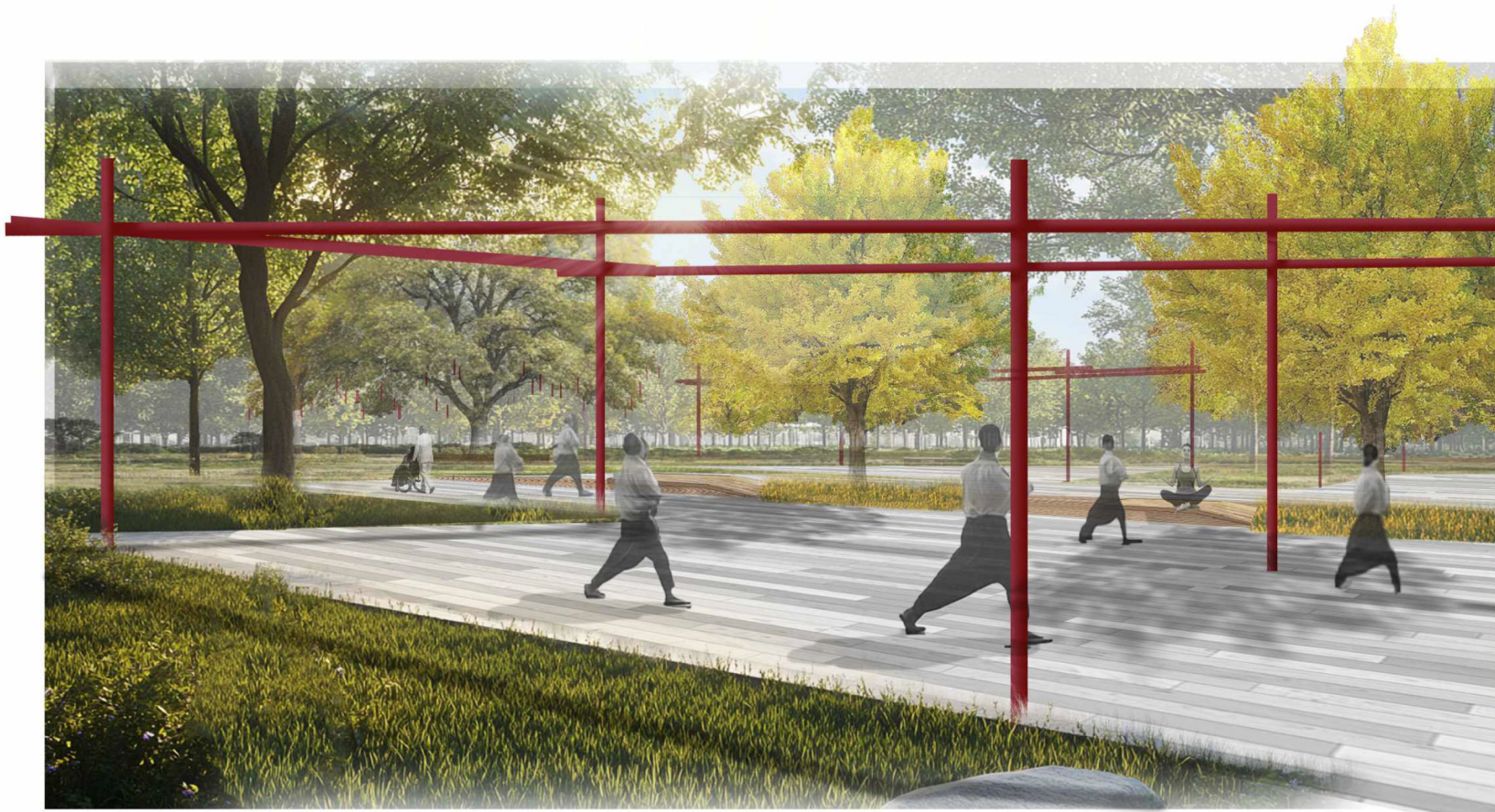
THE VISION

PROCESS

DESIGN

THE FUTURE

CHINATOWN STREET PERSPECTIVE



INTRODUCTION

ANALYSIS & EXPLORATION

THE VISION

PROCESS

DESIGN

THE FUTURE

PROJECT GOALS RECAP





INTRODUCTION

ANALYSIS & EXPLORATION

THE VISION

PROCESS

DESIGN

THE FUTURE

CITATIONS (IMAGES CITED LEFT -> RIGHT & TOP -> BOTTOM)

Page 3

Adobe Stock

Page 5

Ingomenhard. "Modern City Map - Riverside California Vector Image on VectorStock." VectorStock, 21 Jan. 2019. www.vectorstock.com/royalty-free-vector/modern-city-map-riverside-california-vector-23544300.

<https://vemaps.com/united-states/us-02>

Page 6

Map showing location of Riverside Chinatown. Google Earth, earth.google.com/web/.

Page 7

User, Super. "Home." Pechanga Band, www.pechanga-nsn.gov/index.php/history. Accessed 16 June 2024.

<https://www.history.com/authors/erin-blakemore?page=14>

Wikimedia Commons, [commons.wikimedia.org/wiki/File:Citrus_groves_in_Ontario,_California,_ca.1900_\(CHS-769\).jpg](https://commons.wikimedia.org/wiki/File:Citrus_groves_in_Ontario,_California,_ca.1900_(CHS-769).jpg). Accessed 17 June 2024.

Robinson, Alicia. "Learn about the Less-Glamorous History of Riverside's Mission Inn in New Exhibit." San Bernardino Sun, San Bernardino Sun, 25 Mar. 2017. www.sbsun.com/2017/03/25/learn-about-the-less-glamorous-history-of-riversides-mission-inn-in-new-exhibit/.

"The Sherman Institute of Riverside, California: A History in Photos." The Sherman Institute of Riverside, California: A History in Photos. www.lapl.org/collections-resources/blogs/lapl/sherman-institute. Accessed 16 June 2024.

Kathy Strong. "Going My Way." "California's Other Gold Rush in Riverside." The Desert Sun, Palm Springs, 28 Aug. 2016. www.desertsun.com/story/travel/advice/kathy-strong/2016/08/28/riverside-going-way-kathy-strong/89507356/.

"The History of Citrus in California." California Bountiful, www.californiabountiful.com/magazine-features/magazine-issues/marchapril-2010/the-history-of-citrus-in-california/. Accessed 16 June 2024.

RIVERSIDECA, aquarius.riversideca.gov/plnimage/2/edoc/39644/P06-1237%20Report.pdf. Accessed 17 June 2024.

Page 8

"Pin by Kim Nolan on 2024 Tiger Princess Life in 2024: Learning Photography. Outdoor Photography. Friends Photography." Pinterest. 4 July 2024. ar.pinterest.com/pin/17770042323842645/.

Dainius. "Incredible Contrast between Two Worlds: The City vs. Central Park, New York." Bored Panda, Bored Panda, 26 Oct. 2015. www.boredpanda.com/central-park-contrast-new-york-city/.

Sydney, Botanic Gardens of. "Kids Exploring in Forest with a Magnifying Glass." Flickr, Yahoo!, 12 July 2024. www.flickr.com/photos/botanic-gardens-sydney/52050952991.

Page 9

Esri, Airbus OS, USGS, NGA, NASA, CGIAR, N Robinson, NCEAS, NLS, OS, NMA, Geodastatysreln, Rijksaterstaat, GSA, Geoland, FEMA, Intermap, and the GIS user Community, Esri Commu7nity Maps Contributors, City of Riverside, County of San Bernardino, California State Parks.

Page 10

Exhibit courtesy of Save Our Chinatown Committee (SOCC).

Page 11

"Chinatown Heritage Park." SAVE OUR CHINATOWN COMMITTEE. www.saveourchinatown.org/chinatown-heritage-park.html. Accessed 11 July 2024.

Page 12 - 13

Esri, Airbus OS, USGS, NGA, NASA, CGIAR, N Robinson, NCEAS, NLS, OS, NMA, Geodastatysreln, Rijksaterstaat, GSA, Geoland, FEMA, Intermap, and the GIS user Community, Esri Commu7nity Maps Contributors, City of Riverside, County of San Bernardino, California State Parks.

Page 14

Adobe Stock

Page 15

Source: Esri, Airbus OS, USGS, NGA, NASA, CGIAR, N Robinson, NCEAS, NLS, OS, NMA, Geodastatysreln, Rijksaterstaat, GSA, Geoland, FEMA, Intermap, and the GIS user Community, Esri Commu7nity Maps Contributors, City of Riverside, County of San Bernardino, California State Parks. Page 16 - 17

Geocortex Viewer for HTML5, mapriverside.riversideca.gov/Html5Viewer/index.html?Viewer=Public_Viewer.City_Viewer. Accessed 16 June 2024.

Page 19 - 20

Esri, Airbus OS, USGS, NGA, NASA, CGIAR, N Robinson, NCEAS, NLS, OS, NMA, Geodastatysreln, Rijksaterstaat, GSA, Geoland, FEMA, Intermap, and the GIS user Community, Esri Commu7nity Maps Contributors, City of Riverside, County of San Bernardino, California State Parks.

Page 21

"Downtown Neighborhood in Riverside, California (CA), 92501, 92509 Detailed Profile." Downtown Neighborhood in Riverside, California (CA), 92501, 92509 Subdivision Profile - Real Estate, Apartments, Condos, Homes, Community, Population, Jobs, Income, Streets. www.city-data.com/neighborhood/Downtown-Riverside-CA.html#mapmap. Accessed 16 June 2024.

Page 22

Red-Tailed Hawk - Ebird, ebird.org/species/rethaw. Accessed 12 July 2024.

Florida Scrub-Jay - Ebird, ebird.org/species/flsjay. Accessed 12 July 2024.

"Western Fence Lizard." Nature Collective, 5 Apr. 2019. naturecollective.org/animal-guide/details/western-fence-lizard/.

Advocate, Encinitas. "Right Plantings Will Help Attract Hummingbirds, Butterflies to Garden." Tribune, San Diego Union-Tribune, 27 Aug. 2016. www.sandiegouniontribune.com/2015/05/15/right-plantings-will-help-attract-hummingbirds-butterflies-to-garden/.

"Sticky Monkey Flower." Waterwise Garden Planner, 29 June 2024. waterwisegardenplanner.org/plants/mimulus-aurantiacus/.

"Encelia Farinosa - Brittlebush, Goldenhills, Incienso: Butterfly Plants, Xeriscape Plants, Desert Landscaping." Pinterest, 17 Apr. 2017. ru.pinterest.com/pin/32651166030564885/.

"Phacelia Campanularia." Wikipedia, Wikimedia Foundation, 20 Oct. 2023. en.wikipedia.org/wiki/Phacelia_campanularia.

Chia, [calscape.org/Salvia-columbariae-\(Chia\)](http://calscape.org/Salvia-columbariae-(Chia)). Accessed 12 July 2024.

Page 26

Horse drawn vehicles in Chinatown, Riverside, California, ca. 1900. Photo courtesy of Special Collections & Archives, UCR Libraries, University of California, Riverside

(Pages 27 - 29 cited under "Book Citations" section - next page)

Page 30

"Lila 2020: Ellipse Garden." Landezine, landezine.com/lila-2020-ellipse-garden-by-kjeld-slot-havearkitekt/. Accessed 16 June 2024.

Page 31

"Light and Shadow: Landscape of Wanguofu by Change Studio." Landezine, landezine.com/light-and-shadow-landscape-of-wanguofuby-change-studio/. Accessed 16 June 2024.

Page 32

"Magneten Sensory Garden by Masu Planning." Landezine, landezine.com/magneten-sensory-garden-by-masu-planning/. Accessed 16 June 2024.

INTRODUCTION

ANALYSIS & EXPLORATION

THE VISION

PROCESS

DESIGN

THE FUTURE

CITATIONS (IMAGES CITED LEFT -> RIGHT & TOP -> BOTTOM)

Page 33

© [DisobeyArt] / Adobe Stock

Page 35

"Cozy Fall Vibes." Pinterest, 30 Sept. 2011. www.pinterest.com/pin/23383540562194907/.

"Elderly Couple Walking in 2024: Elderly Couples, Couples Walking, Old Couples." Pinterest, 8 Mar. 2024. www.pinterest.com/

Page 36

"I Captured the Beauty of Nature in Mirror Reflections: Mirror Photography, Reflection Photography, Mirror Reflection." Pinterest, 3 Feb. 2023. www.pinterest.com/pin/1137792293336742564/.

"Pin on Welcome to the Beach in Colors." Pinterest, 10 Nov. 2022. www.pinterest.com/pin/58898707618849280/.

Page 37

"Ursid Meteor Shower Peak." Pinterest, 31 Jan. 2020. www.pinterest.com/pin/729935052091904672/.

"Sun Rise Morning: Resim, Sanatsal Fotoaf, Manzara Resimleri." Pinterest, 9 Oct. 2022. www.pinterest.com/pin/667869819759432195/.

Page 38

"2016 Nat Geo Travel Photographer of the Year Winners." Contests, 30 Oct. 2019. www.nationalgeographic.com/contests/article/travel-photo-contest-2016-winners.

"Somogyhárság: Somogyhárság." Facebook, www.facebook.com/p/Somogyh%C3%A1rs%C3%A1gy-100065426923245/?paipv=0&eav=AFYys-92M89EoUlyBSFbldns-y7FuPMT-WjTKqXutmFlcs-TLW6emCoB_oduAZupME&_rdr. Accessed 16 June 2024.

Page 40

Adobe Stock

Page 43

"Outdoor Raised Planters Front Yard Design Photos and Ideas." Dwell, www.dwell.com/favorites/photos/outdoor/landscapes--raised-planters/locations--front-yard. Accessed 11 July 2024.

"Pebble Seats: Modern Outdoor Benches & Seating: Playground Design, Sensory Garden, Natural Playground." Pinterest, 13 Feb. 2023. www.pinterest.com/pin/335447872262921516/.

"Gallery of Clear Water Tea House / Behet Bondzio Lin Architekten - II." ArchDaily, [www.archdaily.com/1006627/clear-water-tea-house-behet-bondzio-lin-architekten-64ff4bcc4cd29b017cf65eca-clear-water-tea-house-behet-bondzio-lin-architekten-64ff4bcc4cd29b017cf65eca-clear-water-tea-house-behet-bondzio-lin-architekten-photo](http://www.archdaily.com/1006627/clear-water-tea-house-behet-bondzio-lin-architekten-64ff4bcc4cd29b017cf65eca-clear-water-tea-house-behet-bondzio-lin-architekten-photo). Accessed 11 July 2024.

Page 45

"Pra - Private House - Picture Gallery: Arka Bahçeler, Arka Bahçe Tasarımları, Veranda Tasarımı." Pinterest, 11 Feb. 2020. id.pinterest.com/pin/348395721175417534/.

"Bahce Mobilyaları İçin 110 Fikir: Bahçe, Mobilya, Arka Bahçeler." Pinterest, 10 Feb. 2017. tr.pinterest.com/afndkturan/bahce-mobilyalari/.

"Parkland09.JPG: Small Garden Landscape, Landscape Design, Landscape Architecture." Pinterest, 26 Oct. 2016. www.pinterest.com/pin/29118593242181824/.

Page 47

Mordo, Jessica. "10 Ideas for Designing a Meadow Garden." Sunset Magazine, 8 Oct. 2018. www.sunset.com/home-garden/landscaping/meadow-garden.

"Pathway over Pond in Japanese Garden, Portland Oregon." iStock, www.istockphoto.com/es/foto/v%C3%ADa-sobre-estanque-en-el-jard%C3%ADn-japon%C3%A9-sportland-oregon-gm5325247-47774044. Accessed 11 July 2024.

"Pin by Kamuela on Japanese Culture & Design: Japanese Home Design, Japanese Interior Design, Japanese Style House." Pinterest, 20 Nov. 2023. www.pinterest.com/pin/4362930882091413/.

Page 50

"Gallery of Clear Water Tea House / Behet Bondzio Lin Architekten - II." ArchDaily, www.archdaily.com/1006627/clear-water-tea-house-behet-bondzio-lin-architekten-64ff4bcc4cd29b017cf65eca-clear-water-tea-house-behet-bondzio-lin-architekten-photo. Accessed 11 July 2024.

"Outdoor Raised Planters Front Yard Design Photos and Ideas." Dwell, www.dwell.com/favorites/photos/outdoor/landscapes--raised-planters/locations--front-yard. Accessed 11 July 2024.

Mordo, Jessica. "10 Ideas for Designing a Meadow Garden." Sunset Magazine, 8 Oct. 2018. www.sunset.com/home-garden/landscaping/meadow-garden.

<https://www.arterrasf.com/painterly-approach>

<https://www.pinterest.com/pin/431501208037972685/>

"100 Playgarden." Pinterest, www.pinterest.com/MrsPassMamaPass/playgarden-outdoor-space/. Accessed 29 July 2024.

"Pin by Kamuela on Japanese Culture & Design: Japanese Home Design, Japanese Interior Design, Japanese Style House." Pinterest, 20 Nov. 2023. www.pinterest.com/pin/4362930882091413/.

<https://www.pinterest.com/pin/197806608621728896/>

<https://tr.pinterest.com/jujucocooq/>

<https://in.pinterest.com/pin/764767580500223838/>

Page 53

"Memorial Park Tomorrow January 2015." SlideShare, Slideshare, 21 Jan. 2015. www.slideshare.net/slideshow/mem-parkjanuary2015sm/43757778.

<https://www.azcentral.com/story/news/local/phoenix/2023/04/03/phoenix-suns-want-to-paint-orange-and-purple-crosswalks-in-downtown/70070325007/>

"Pin by Loft S C A P E on Landscape Architecture: Landscape Design, Paving Design, Landscape Architecture Design." Pinterest, 21 Apr. 2019. www.pinterest.com/pin/222365300338596515/.

"Pin by Axelle Raemdonck on Parking: Park Landscape, Landscape and Urbanism Architecture, Urban Landscape Design." Pinterest, 12 Feb. 2020. www.pinterest.com/pin/6896205666475628/.

<https://es.pinterest.com/pin/315252042678157014/>

"Gallery of One City Development, Gemdale Wuhan / Aspect Studios - 10: Landscape Architecture Design, Landscape Architecture, Landscape Design." Pinterest, 19 May 2021. www.pinterest.com/pin/37534695020104346/.

"Pin by Norali Ortiz on Inspiración: Landscape Architecture Plan, Landscape Architecture Drawing, Landscape Architecture Design." Pinterest, 27 Oct. 2023. www.pinterest.com/pin/774124929135599/.

INTRODUCTION

ANALYSIS & EXPLORATION

THE VISION

PROCESS

DESIGN

THE FUTURE

CITATIONS

(IMAGES CITED LEFT -> RIGHT & TOP -> BOTTOM)

Page 54

"Navel Orange Tree (Citrus × Sinensis 'Washington')." Plants Express, plantsexpress.com/products/navel-orange-tree. Accessed 29 July 2024.

"Western Redbud." Waterwise Garden Planner, 29 June 2024, waterwisegardenplanner.org/plants/cercis-occidentalis/.

"Landscape Plants." Quercus Agrifolia | Landscape Plants | Oregon State University, landscapeplants.oregonstate.edu/plants/quercus-agrifolia. Accessed 29 July 2024.

"Koelreuteria Paniculata Laxm." Koelreuteria Paniculata - Trees and Shrubs Online, www.treesandshrubsonline.org/articles/koelreuteria/koelreuteria-paniculata/. Accessed 29 July 2024.

"Platanus Racemosa." Platanus Racemosa | California Flora Nursery, www.calfloranursery.com/plants/platanus-racemosa-0. Accessed 29 July 2024.

"Check the Home Depot's Q&A Before Buying 1 Gal. Chinese Pistache Deciduous Tree." The Home Depot, www.homedepot.com/p/questions/1-Gal-Chinese-Pistache-Deciduous-Tree-PISCH10IG/315948292/1. Accessed 29 July 2024.

Page 55

"Pacific Horticulture: Lush, Colorful, and Water-Wise: An Impossible Dream?: Low Water Landscaping, Australian Native Garden, Drought Tolerant Garden." Pinterest, 2 Feb. 2019, www.pinterest.com/pin/AWmLiBjdIscrHR37AlmodxPYRrDLdGBmzxcl6FjKTXBFTUwwECHO/.

Chinese Bamboo Culture, en.chinaculture.org/chineseway/2011-01/04/content_402902.htm. Accessed 29 July 2024.

Strada. "Check out the Gardens at Centarra - Blog." Centerra, 13 May 2024, www.centerra.com/check-out-the-gardens-at-centerra/.

"A Rich Tapestry of Planting within a Biodynamic Farm in Spain: Garden Inspiration, Landscape Design, Garden Design." Pinterest, 23 July 2023, www.pinterest.com/pin/10273905392750413/.

"Painterly Approach." Arterra Landscape Architects, www.arterrasf.com/painterly-approach. Accessed 29 July 2024.

"Limelight by Meyer Studio Landscape Architects." Landezine, landezine.com/limelight-by-meyer-silberberg-landscape-architects/. Accessed 29 July 2024.

"Anthemis 'Blomit', or Golden Marguerite, Orlaya Grandiflora, or White Lace Flower, and Nassella Tenuissim... Splendidi Giardini, Giardino Naturale, Fiori Selvatici." Pinterest, 13 June 2019, www.pinterest.com/pin/Aal68Yuwjrz2h2BcpFozStn6VleSX-bhUZNTtAtNGLDZR4suoebV24/.

Page 63

Horse drawn vehicles in Chinatown, Riverside, California, ca. 1900. Photo courtesy of Special Collections & Archives, UCR Libraries, University of California, Riverside

BOOK CITATIONS:

Page 27

Intern, Project. "Launch of the Climate Heritage Network 2022-24 Action Plan." Launch of the Climate Heritage Network 2022-24 Action Plan - International Council on Monuments and Sites, [www.icomos.org/en/pub/78-english-categories/109386-launch-of-the-climate-heritage-network-2022-24-action-plan#:~:text=The%20Climate%20Heritage%20Network%20\(CHN,culture%20%2D%20from%20arts%20to%20heritage](https://www.icomos.org/en/pub/78-english-categories/109386-launch-of-the-climate-heritage-network-2022-24-action-plan#:~:text=The%20Climate%20Heritage%20Network%20(CHN,culture%20%2D%20from%20arts%20to%20heritage). Accessed 16 June 2024.

Page 28

Lin, Maya, et al. Maya Lin: Topologies. Southeastern Center for Contemporary Art, 1998.

Page 29

West, Claudia. Planting in a Post-Wild World Claudia West. Timber Press, 2016.