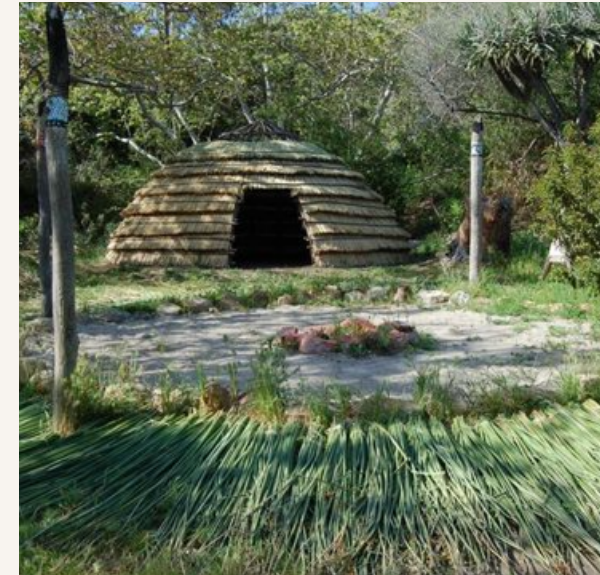


PLAN VIEW

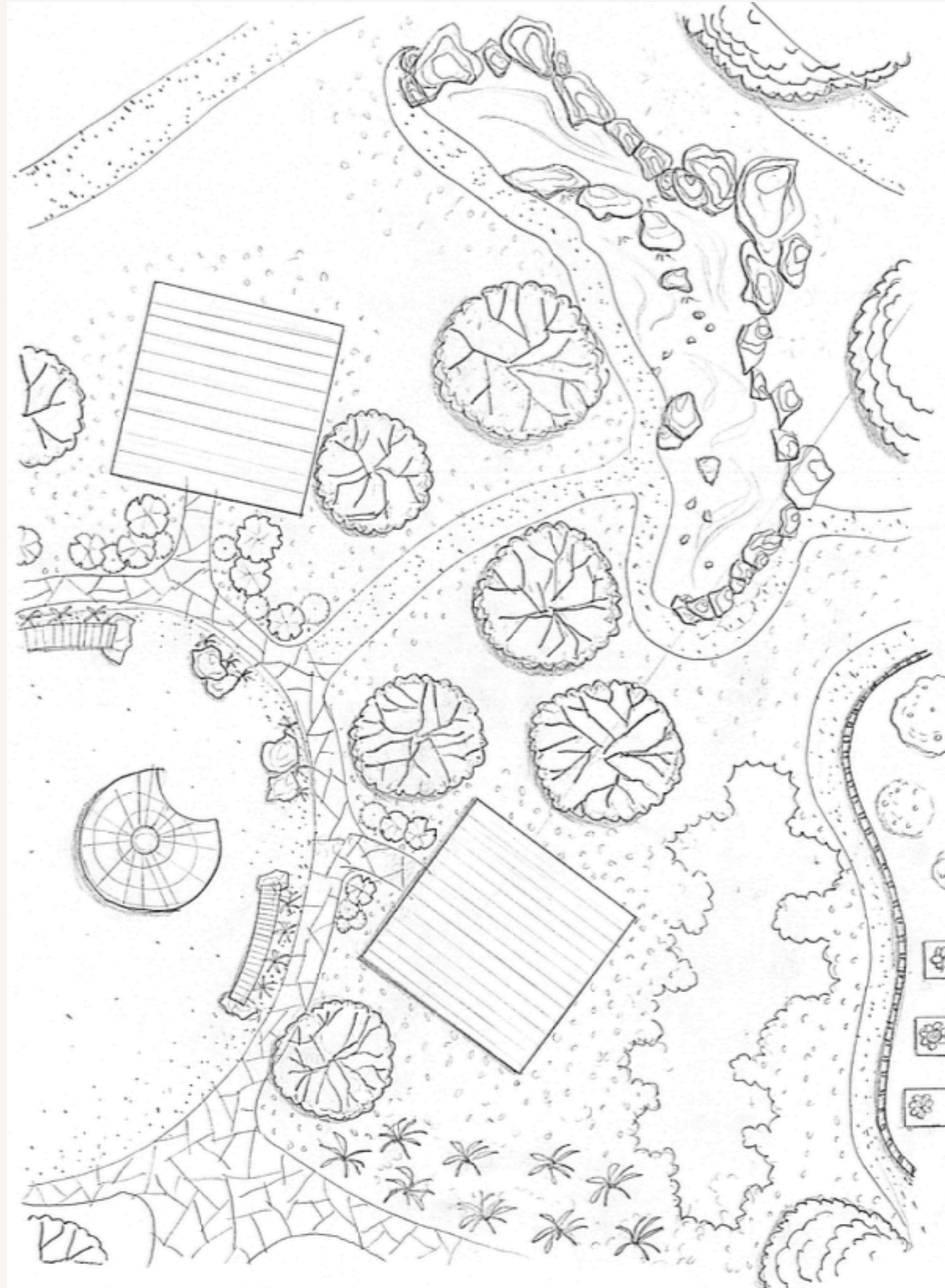
LESLIE PAUGH



SITE DEVELOPMENT PLAN

The concept of my design is “Honoring the Chumash”. The wavy paths represent a deep connection to the California Coast. The site promotes a village-like atmosphere in which it’s community is interwoven with the many educational activities that the school provides.

PLAN VIEW



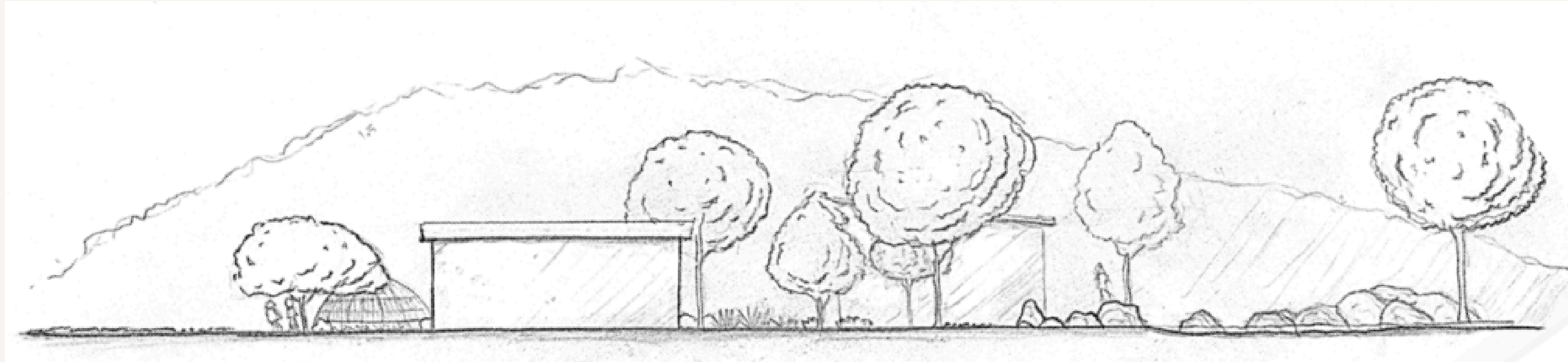
LESLIE PAUGH

ENLARGEMENT PLAN 1" = 10'

The Grades 1-5 Classroom are arranged in a circular village with a central open space where they can build Chusmash dwellings or 'ap, made from willow branches. There is a natural-looking water play area to promote exploration and creative play. Nature is interactive and communal at this school.



PLAN VIEW



SECTION 1" = 10'

The structures and landscaping respect the site and are a balance between the uniformity and unpredictability of nature. The hope is to use materials from the land or what would be naturally found in the area.



MODEL PLAN VIEW



MODEL 1" = 10'

The primary pedestrian pathways are flagstone. Secondary paths are decomposed granite. The use of gravel along the paths blur the boundaries and encourage exploration. The structures are embraced by natural materials.

LESLIE PAUGH

MODEL

LESLIE PAUGH

MODEL 1" = 10'



The classrooms face each other to encourage intermingling between age groups as they support and teach each other. Building an 'ap is a multi-age and long-term activity and the children can use the finished spaces as small gathering areas for reading, playing, or to take a break.



MODEL



MODEL 1" = 10'

An example of the use of flagstone, decomposed granite and gravel.

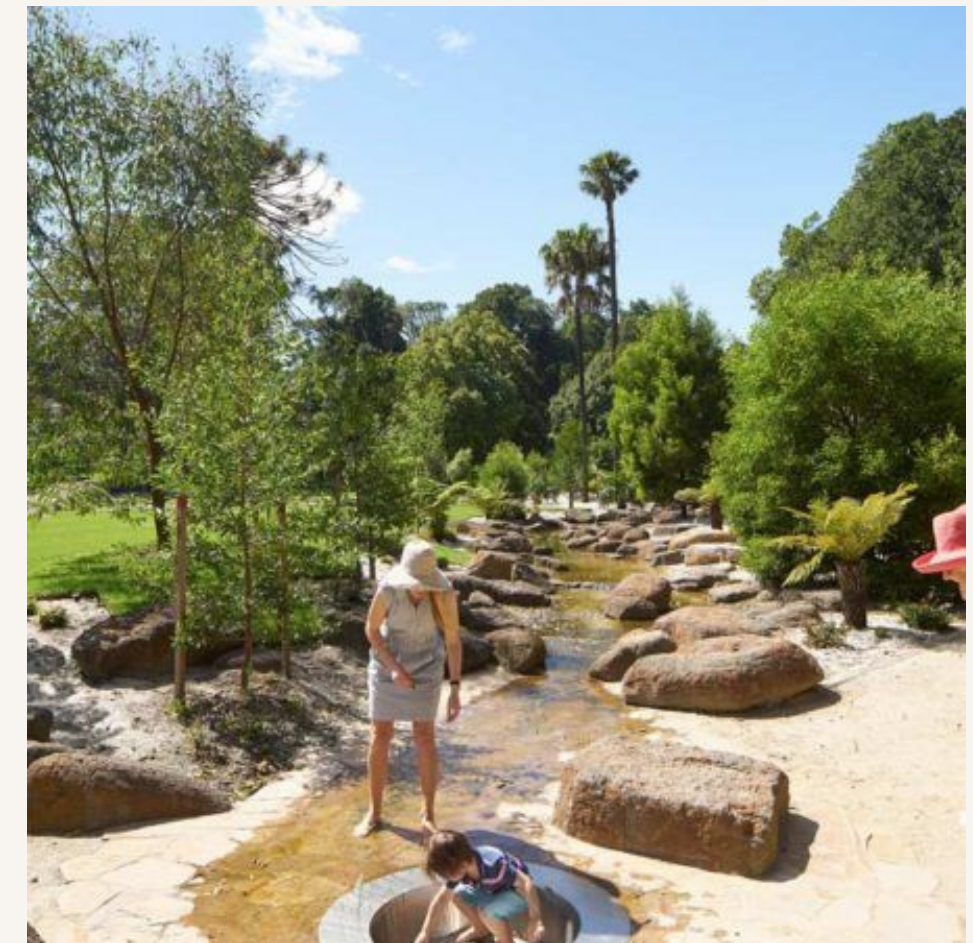


MODEL

LESLIE PAUGH

MODEL 1" = 10'

The water feature is a functional play space that invites experimentation and collaboration.



MODEL



MODEL 1" = 10'

Fencing is also made of woven willow branches.



MODEL



MODEL 1" = 10'

All structures even seating are integrated into the landscape.





LESLIE PAUGH