



TONGVA PARK

CHARLIE LEAZER

DG-3 - L RAZO

SPRING 2024



Introduction

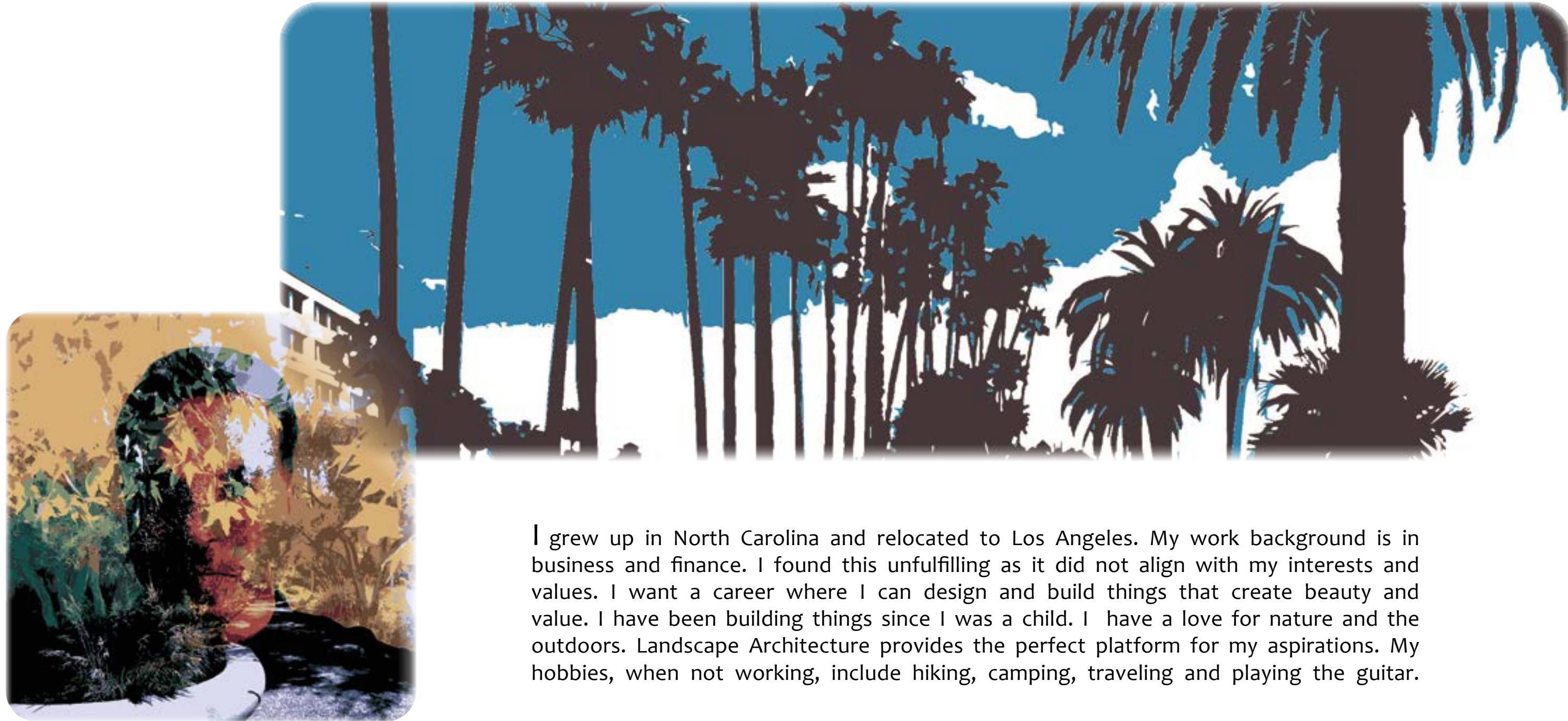
This booklet showcases a portfolio of works produced thus far in my study of landscape architecture at UCLAx. Landscape architecture is a multidisciplinary profession that combines art, science, and technology to create sustainable, beautiful, and functional outdoor spaces that enrich people's lives and enhance the natural environment¹.

The booklet focuses on graphic design elements to be used in the landscape architecture profession. The following pages were created using hand rendered drafting and drawing techniques along with use of computer aided design software.

The subject matter is Tongva Park in Santa Monica, California.



About Me



I grew up in North Carolina and relocated to Los Angeles. My work background is in business and finance. I found this unfulfilling as it did not align with my interests and values. I want a career where I can design and build things that create beauty and value. I have been building things since I was a child. I have a love for nature and the outdoors. Landscape Architecture provides the perfect platform for my aspirations. My hobbies, when not working, include hiking, camping, traveling and playing the guitar.

Contents

01

Location

02

Site History

03

Concept

04

Site Analysis

05

Illustrative Plans

07

Quadrant 2E

08

Section Elevation

09

Enlargement

10

Perspectives

12

Process

13

Summary

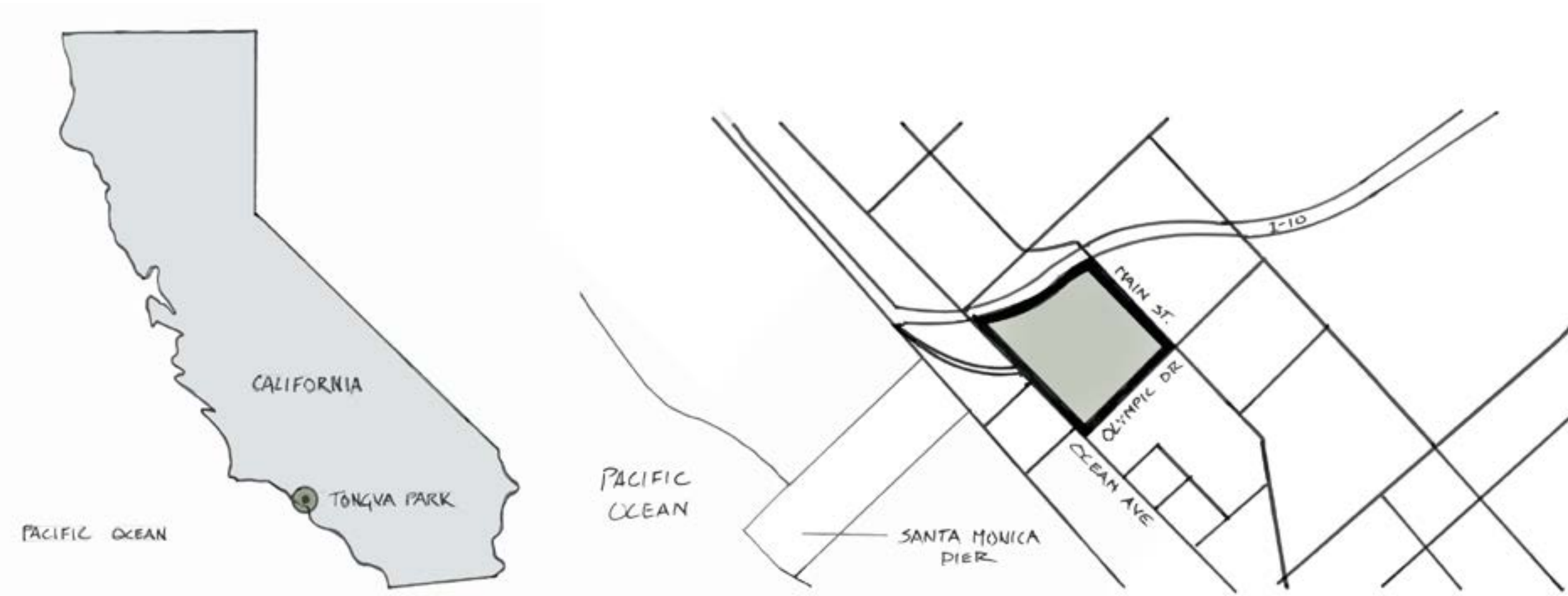
14

Acknowledgements

Location

Tongva Park is a 6.2 acre park located in the heart of Santa Monica. It is situated between the historic City Hall building and Ocean Avenue; adjacent to the Santa Monica Pier. It is accessible from the 10 Freeway and the Pacific

Coast Highway. Tongva Park serves as a link between different parts of the city. The park's design features pedestrian-friendly pathways, bike lanes, and connections to surrounding neighborhoods within Santa Monica².



1615 Ocean Ave, Santa Monica, CA 90401



Site History



Tongva Park derives its name from the Tongva people; a Native American indigenous people of California.

The Tongva lived in villages, primarily along the coast and along rivers in what is present-day Los Angeles County, Orange County, and parts of San Bernardino County. Their culture was rich in art, music, and storytelling. They had a deep spiritual connection to the land and sea, and their beliefs were intertwined with their natural surroundings¹.

The park sits right in the heart of Santa Monica between City Hall and the Santa Monica Pier. Prior to construction of the park, the site was underutilized as a parking lot for the RAND Corporation². The City of Santa Monica took over the site to expand its parks and urban spaces. The park acts as a connection between surrounding neighborhoods and creates a buffer to the 10 Freeway.



The Park is inspired by the Arroyo landscape of Southern California. Arroyo is the Spanish word for stream. Southern California is characterized by a series of ravines and washes that carve winding paths



through the landscape on their way to exquisite views of the Pacific Ocean. The park contains paths curving between rising and falling topography; and through open spaces that lead to overlooks of the ocean. The park is

filled with native plants and plant species that are suitably adapted to the microclimate of Santa Monica³.

Restoration of the ecosystem was an important consideration of the design of Tongva Park. Soils were amended and existing trees were preserved. Hundreds of new trees and plants were introduced to take advantage of the microclimate of Santa Monica and to showcase the diversity of species suitable to the site. Irrigation for the site is provided by the Santa Monica Urban Runoff Recycling Facility nearby⁴.



Areas of the park were left unplanted which further leads to the sustainability of the site⁴.

Construction of Tongva Park began in 2010, and the park officially opened to the public in 2013. Construction occurred in several phases. This included



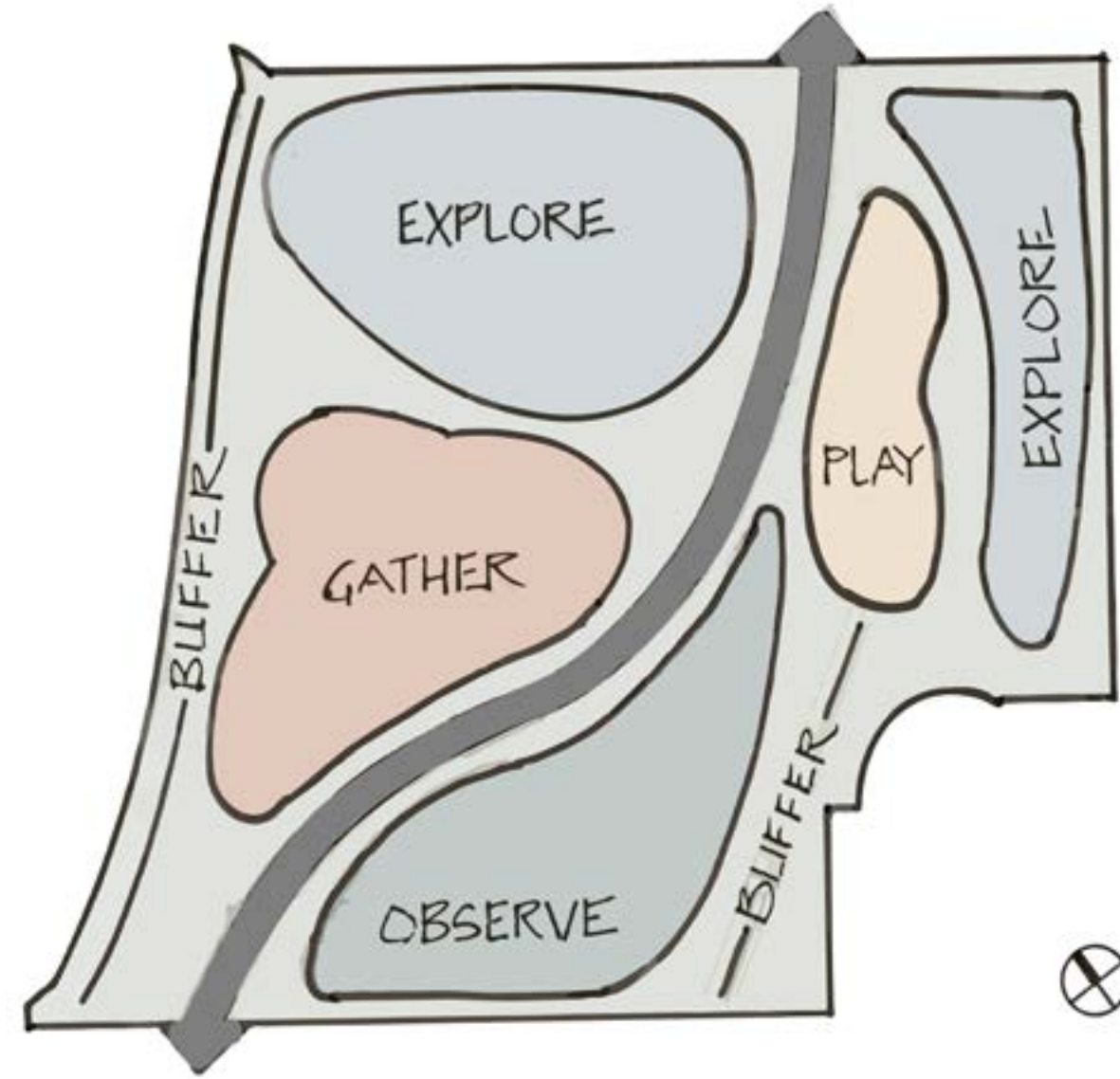
site preparation, grading, infrastructure installation (such as irrigation systems and utilities), and the construction of park amenities and features⁵.

Olympic Drive was extended along the Eastern side of the park and multi-family housing was developed across the street with easy access to the park and playground facilities contained within the park.

Tongva Park was designed by the Landscape Architecture firm Field Operations. James Corner is the founder and CEO. The park has received numerous awards and accolades for its design excellence, sustainability, and contribution to the cultural and recreational fabric of Santa Monica⁶.



Concept



Exploration areas include winding paths through dense vegetation with seating alcoves for resting in the shade.

Playing areas for children include slides, a music wall, water play features and climbing structures.

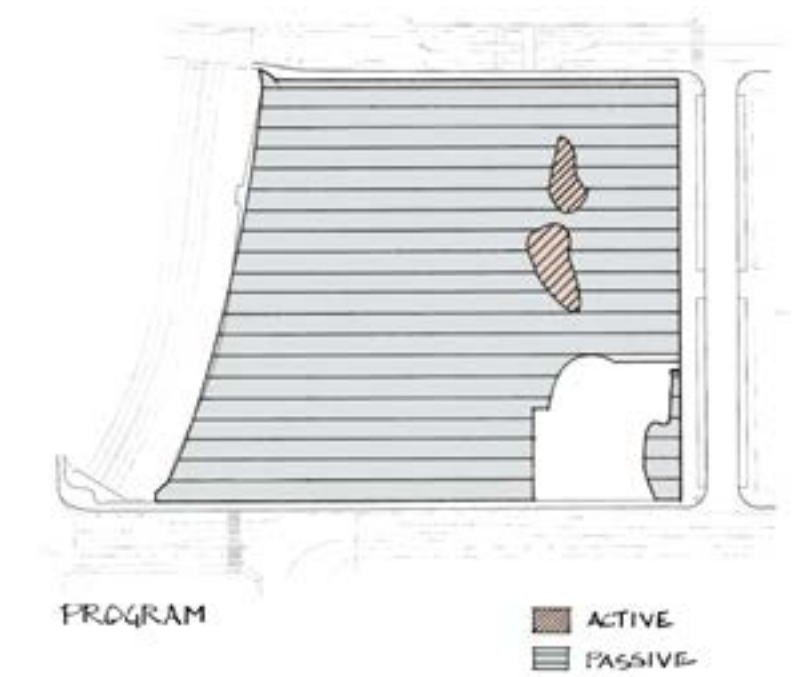
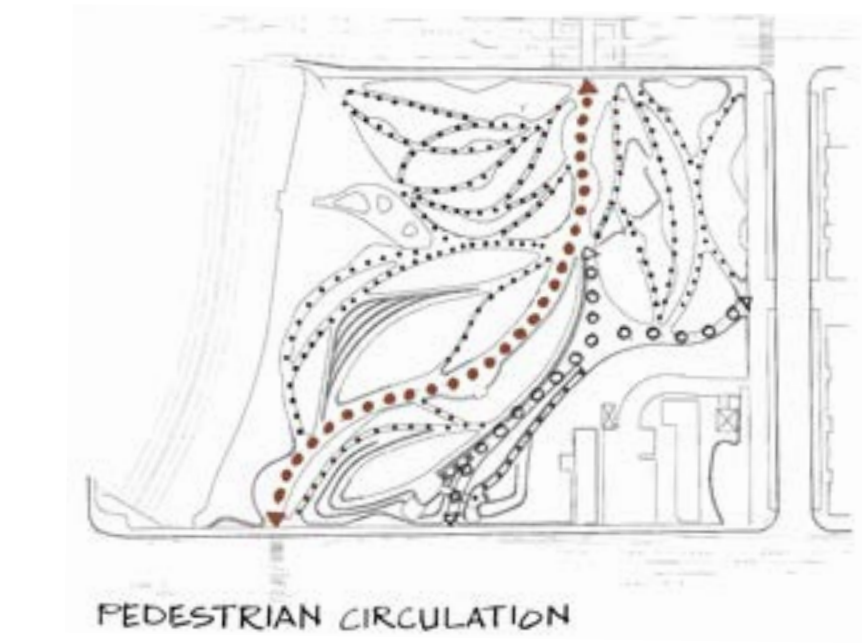
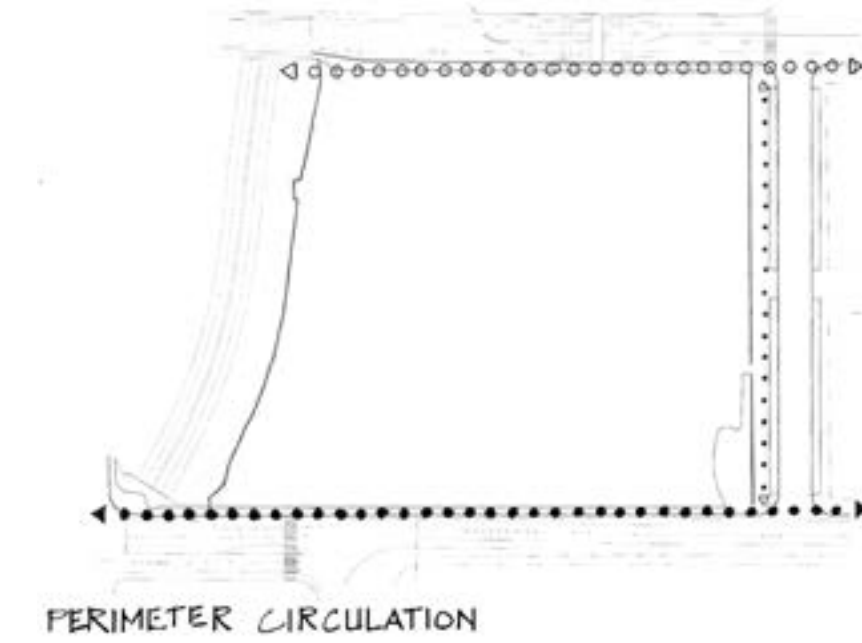
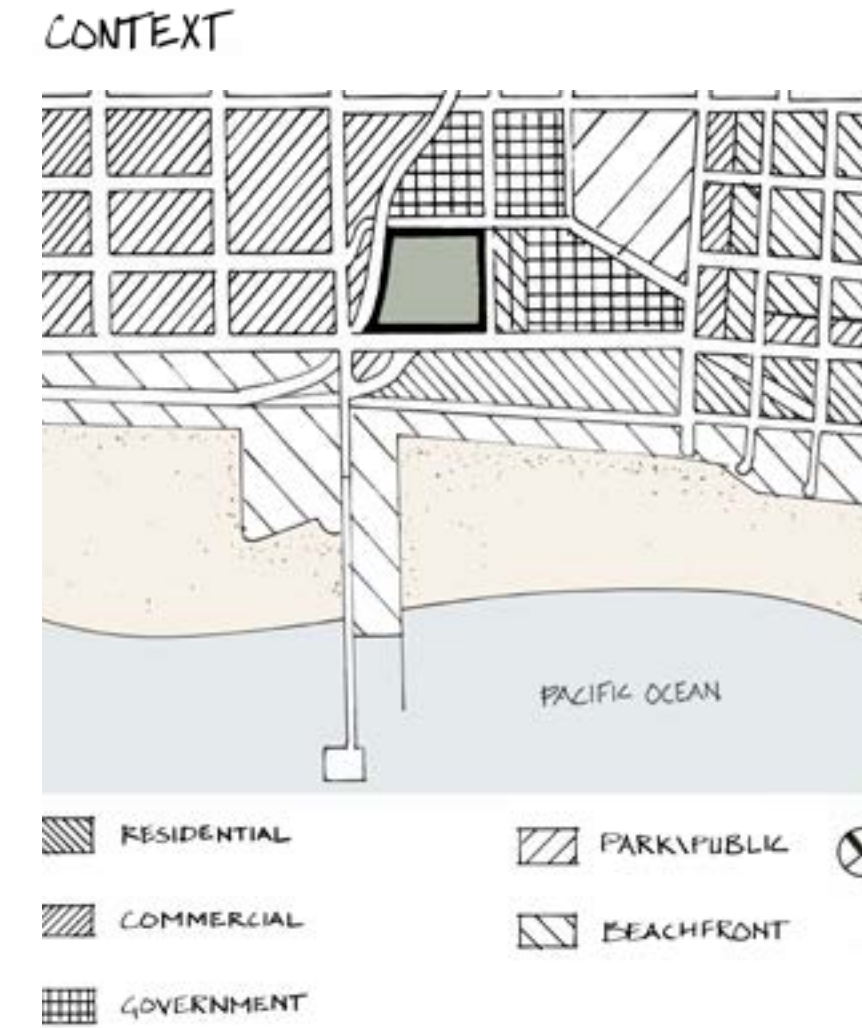
Gathering areas include open lawn spaces and picnic areas with seating terraces.

Observation areas provide views of the Ocean and the Santa Monica oceanfront drive. There are two architectural overlooks at the far south end of the park.

The park connects Santa Monica City Hall to the North with Ocean Avenue and the Santa Monica Pier to the South. Multi-family housing is located to the East. The park provides a buffer to The 10 Freeway to the West.



Site Analysis



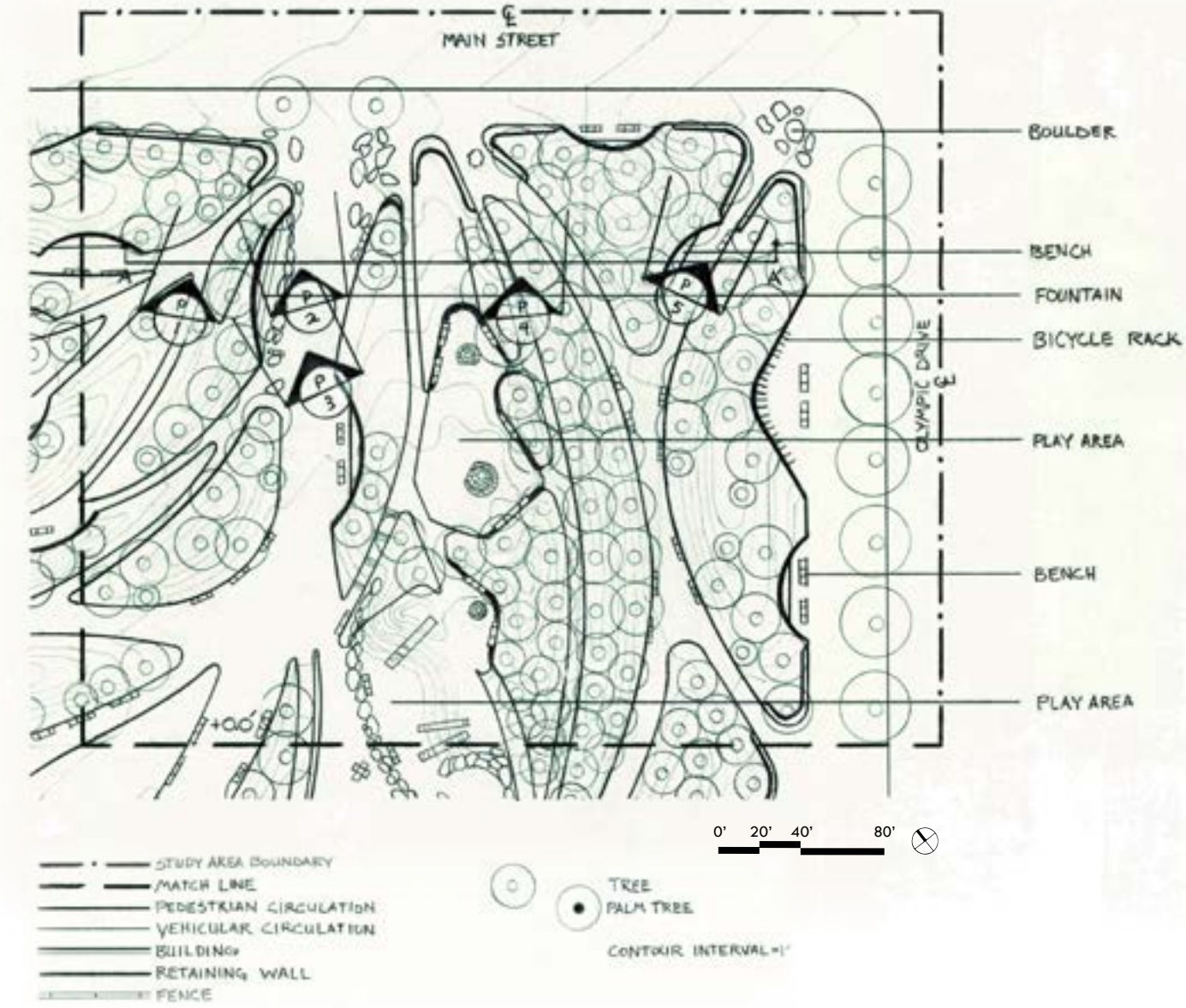
Illustrative Plan Development



Illustrative Plan



Quadrant 2E



Section Elevation



1" = 12' - 0" 0' 6' 12' 24'



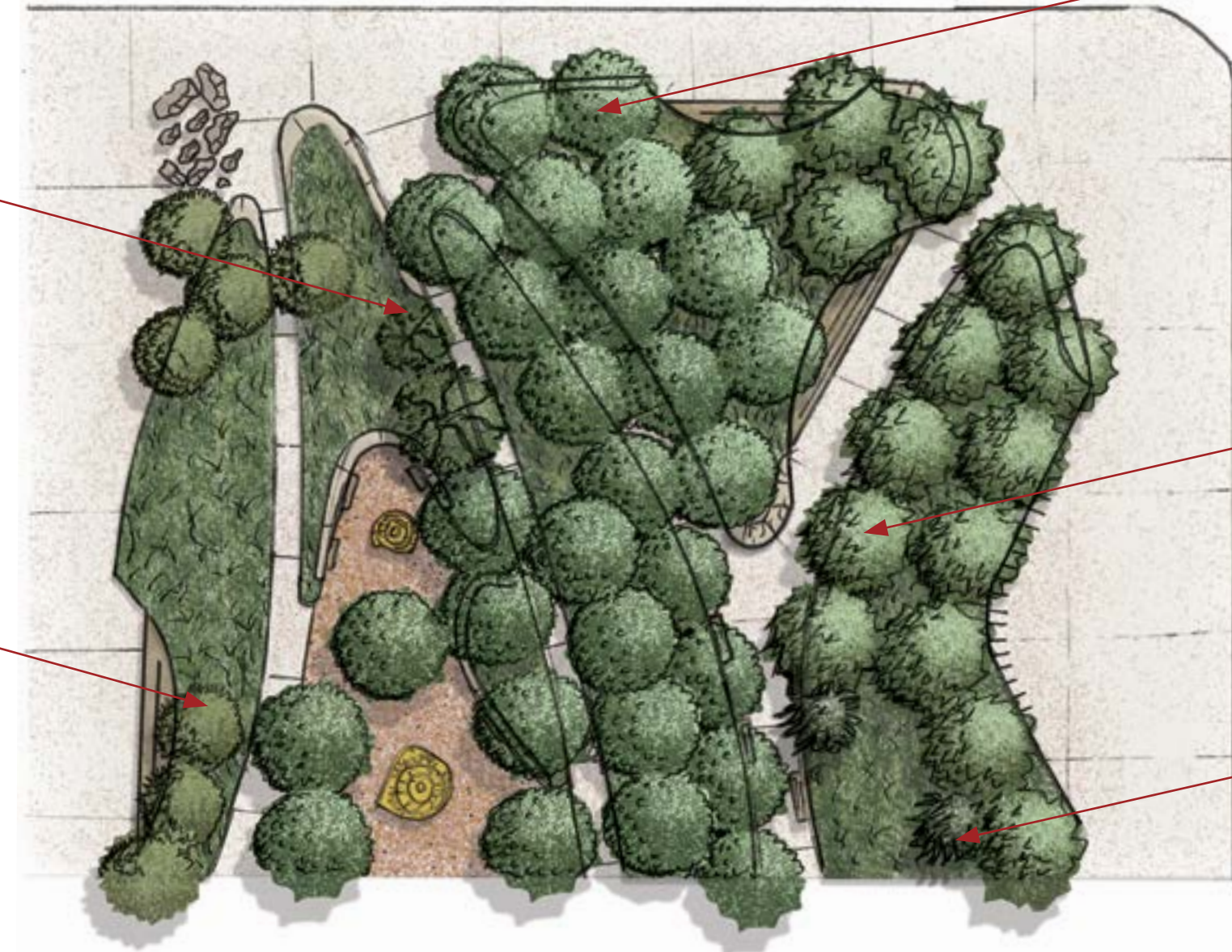
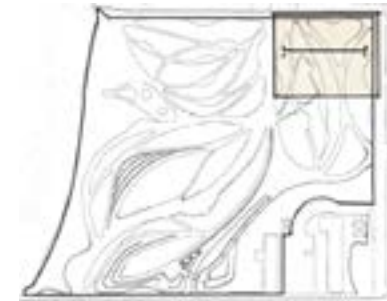
Enlargement



Quercus suber
(Cork Oak)



Arbutus marina
(Strawberry Tree)



1" = 30' - 0"
0' 15' 30' 60'



Olea europaea
(Olive Tree)



Platanus racemosa
(Western Sycamore)



Umbellularia californica
(California Bay)

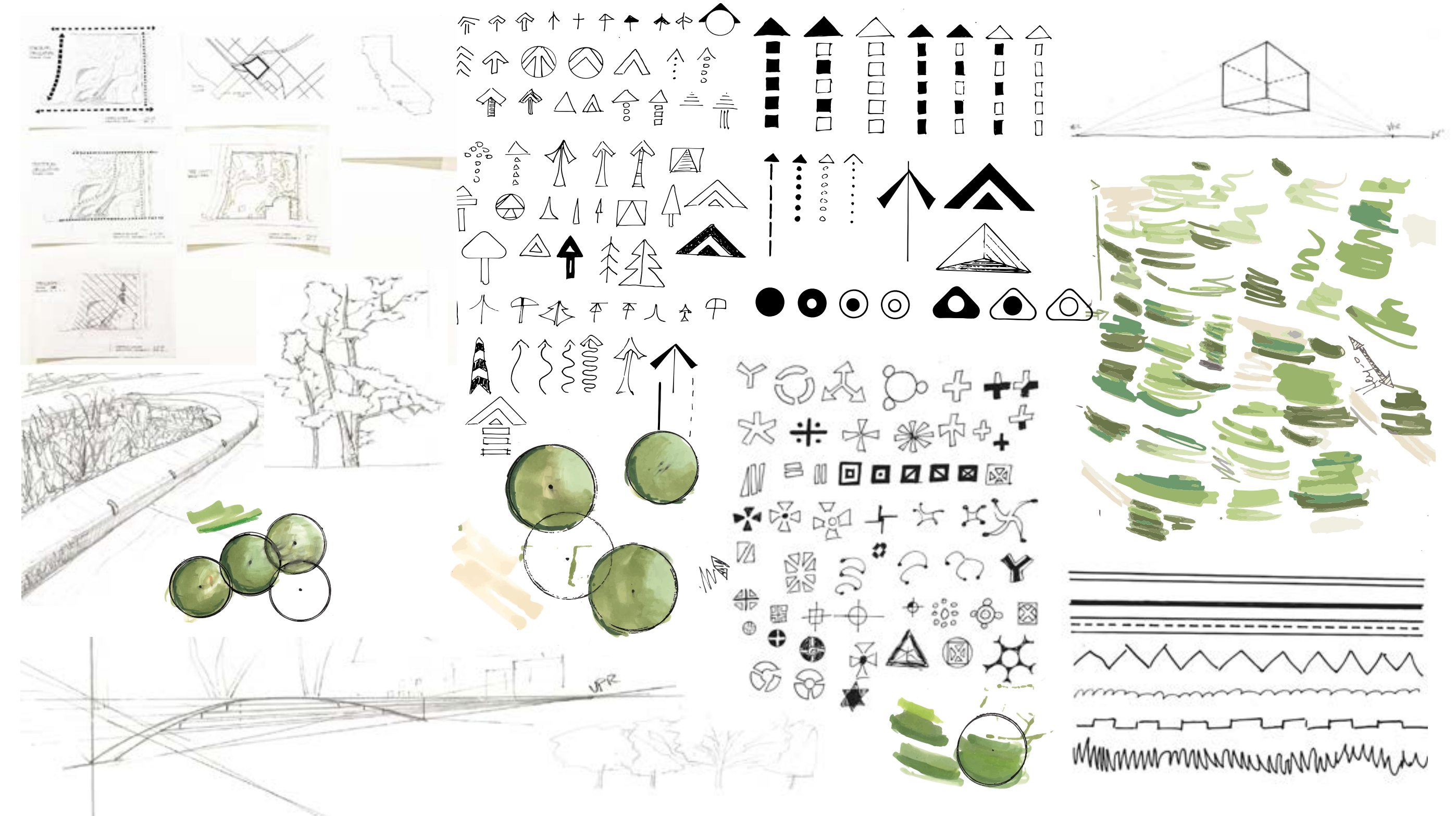
Perspective



Perspective



Process



Summary

This has been a highlight of selected works from the first three quarters of a multi-year discipline. It is the beginning of the journey towards a new career that provides value by focusing on the beauty of nature. Tongva Park has provided a good model for the study of landscape architecture. Southern California is an ideal canvas for the development of outdoor spaces. I am looking forward to the journey ahead.



Acknowledgments

References

1. State of California Native American Heritage Commission. (retrieved June 2024). *Gabrielino/Tongva Nation of the Greater Los Angeles Basin*, <https://nahc.ca.gov/cp/tribal-atlas-pages/gabrielino-tongva-nation/>
2. The Architect's Newspaper. (2019, November). *Tongva Park in Santa Monica is Californian through-and-through*, <https://www.archpaper.com/2019/11/tongva-park-feature/>
3. Rodriguez- Niki, Tonatiuh. (2022, June 13). *A Trip Down the Arroyo Seco - A Microcosm of Infrastructure, Nature, and Society Part I. The Maintainers*. <https://themaintainers.org/arroyo-seco/>
4. Mirror. (2013, February). *New Recreation Area Outside Santa Monica City Hall Renamed Tongva Park*, <https://smmirror.com/2013/02/new-recreation-area-outside-santa-monica-city-hall-renamed-tongva-park/>
5. Commission of Design + Art. (retrieved June 2024). *Tongva Park*, <https://www.codaworx.com/projects/tongva-park-city-of-santa-monica-530f9c615afe8/>
6. Field Operations.net. (retrieved June 2024). *Tongva Park*, <https://www.fieldoperations.net/project-details/project/tongva-park.html>
7. American Society of Landscape Architects. (retrieved June 2024). *Tongva Park and Ken Genser Square*, https://www.asla.org/2018awards/455654-Tongva_Park_And_Ken_Genser.html

Special thanks to the UCLA Extension Landscape Architecture program.

