

ELEMENTARY SCHOOL SITE PROPOSAL

Brian Bautista
UCLA Extension Arch X 472 Summer 2024





STATEMENT



Every student needs a place to learn, but what happens when that place is an untouched section of California's coastline?

This site plan is an effort to answer that question by providing space for students to learn while minimizing the school's footprint on the delicate ecosystem that it must occupy.

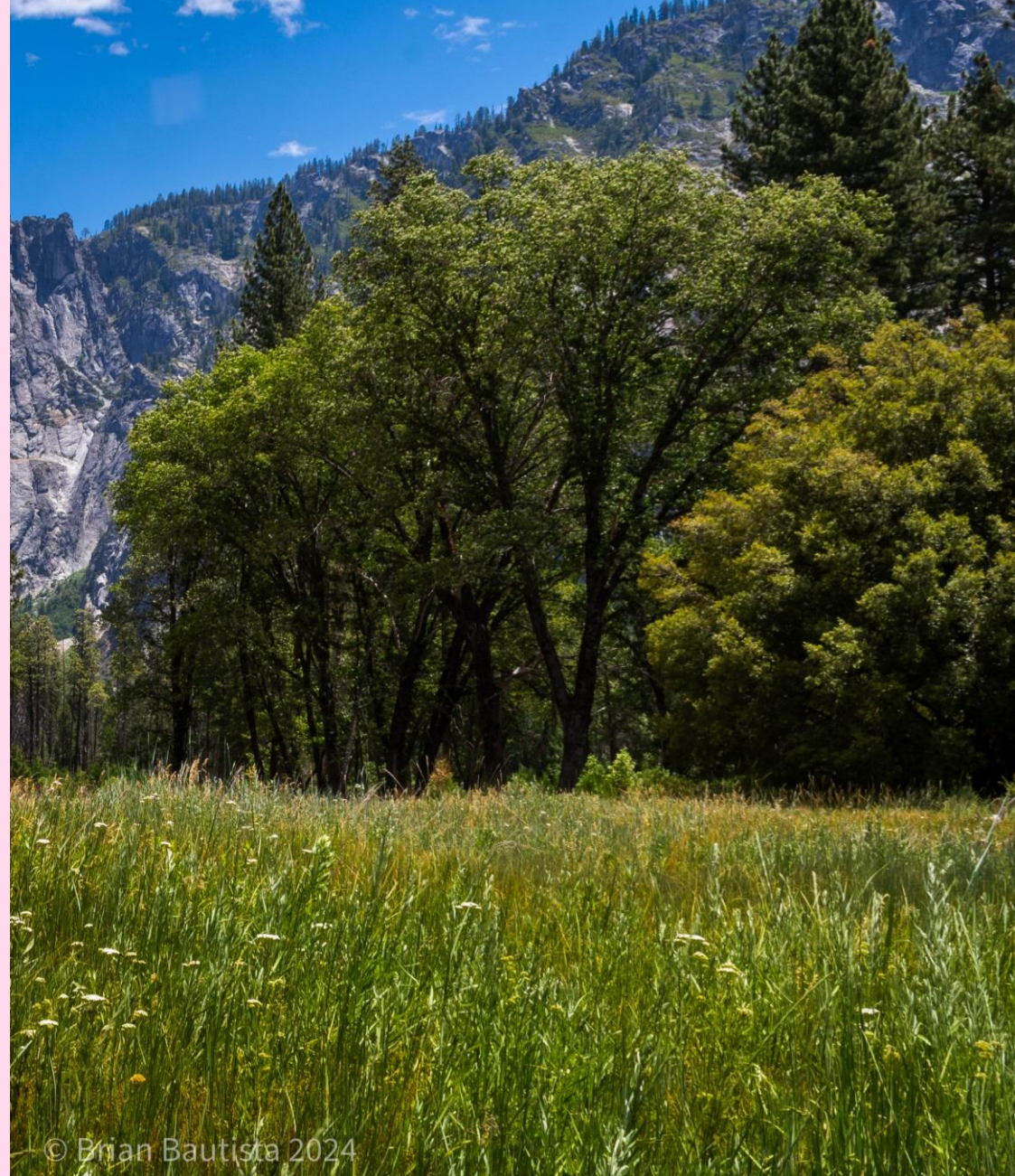
Hardscape is permeable to water and air, allowing plant roots to drink and breathe; their shape is sinuous and inspired by the ocean waves crashing below the school.

Buildings are cloaked with native trees to provide shade for students but also food, forage and homes for California's unique butterflies, bees and birds.

The landscape design itself is an ecological restoration of the four native ecologies on site: Chaparral, Oak Woodland, Coastal Sage Scrub and Riparian ecosystems.

Students will tend these ecosystems just as they tend to their studies, with nature and student growing with one another.

The answer then, is that this is not a school. It's simply a place where humans, flora and fauna coexist, learning and growing together.



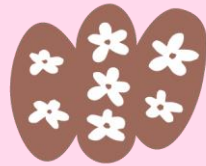
© Brian Bautista 2024

A native meadow of Yarrow, Bent Grass, Wild Rye and annual wildflowers backed by towering Oak, Walnut and Pine Trees. Most of the open space at the school would be planted to emulate this ecology.

SITE PLAN

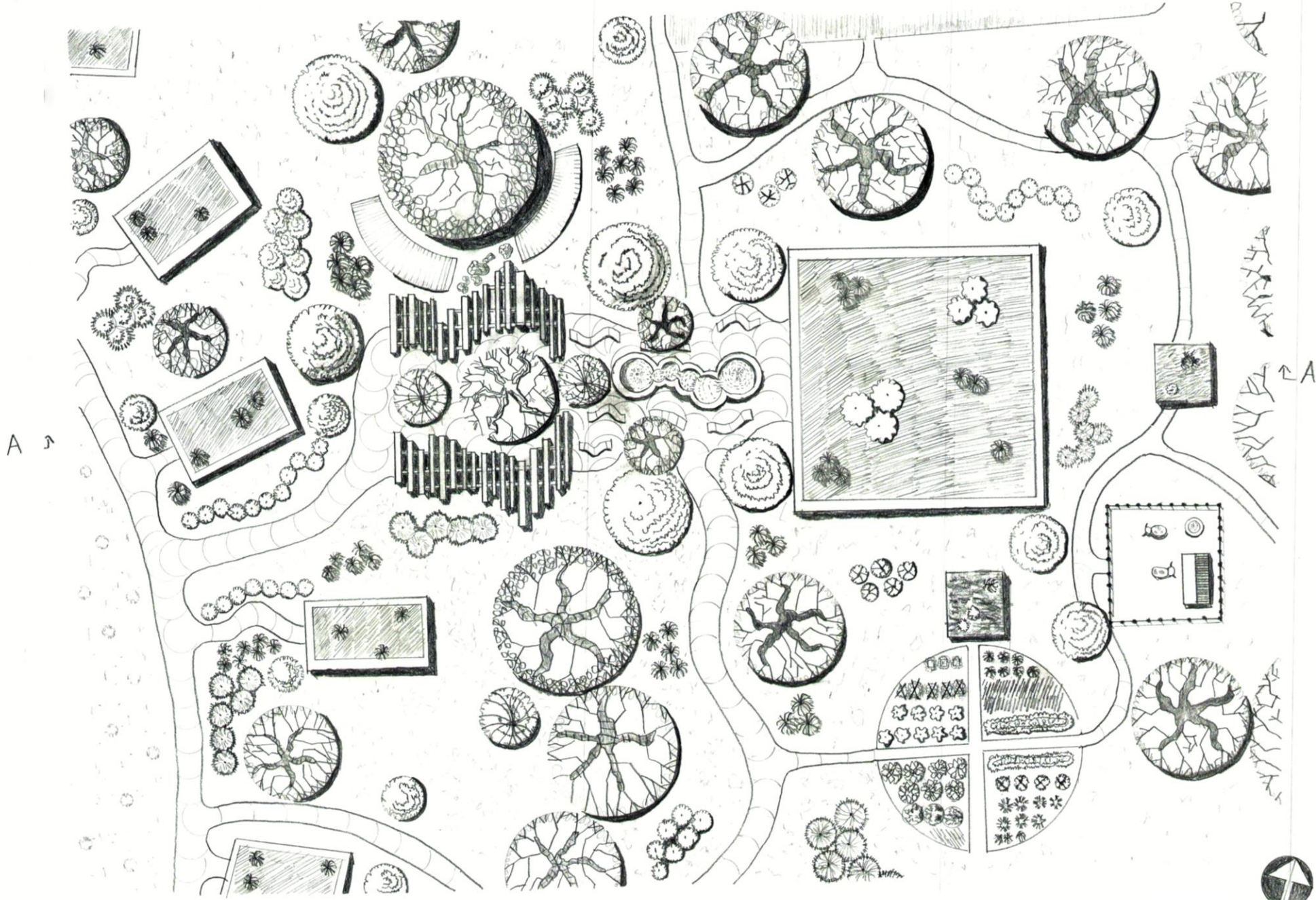


0 50 100
1" = 50'-0" BRIAN BAUTI FA





ENLARGEMENT



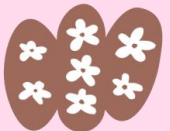
0 10 20
SCALE: 1" = 20'-0"

BRIAN
BAUTISTA





SECTION DETAIL



MODEL IN PLAN VIEW





PATH BY CLASSROOMS





LOOKING TOWARDS LUNCH AREA





CLOSE ON LUNCH AREA





LOOKING TOWARDS ENTRANCE





VIEW FROM AMPHITHEATER





VIEW FROM ORCHARD



A vibrant field of tall grasses, likely a meadow or prairie, filled with numerous small white flowers and clusters of purple flowers. The grasses are a mix of green and golden-brown, suggesting a late summer or autumn setting. The overall scene is bright and natural.

THANK YOU!