



**1834 16TH STREET
SANTA MONICA, CA**

AMY WHITE

INSTRUCTOR: PAMELA BRIEF

LANDSCAPE DESIGN 5: ARCH-X 472 .5

PROJECT 1, RESIDENTIAL

SPRING 2024

DESIGN INTENT

CALMING - FUN - WHIMSICAL - LIGHT ON THE LAND



Bringing the grey-greens of coastal sage scrub into this sustainable all-ages playspace with the intent to reset and and relax the mind.

A combination of native shrubs, low-lying groundcovers, and edible plants and trees ,will enhance this connectin to mother earth.

Interactive areas entice the five senses with a palette of grey greens, violets, oranges and light pinks.

The native flora will provide habitat for a host of pollinators, beneficial insects, birds and other important wildlife.



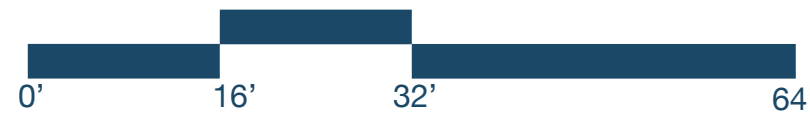
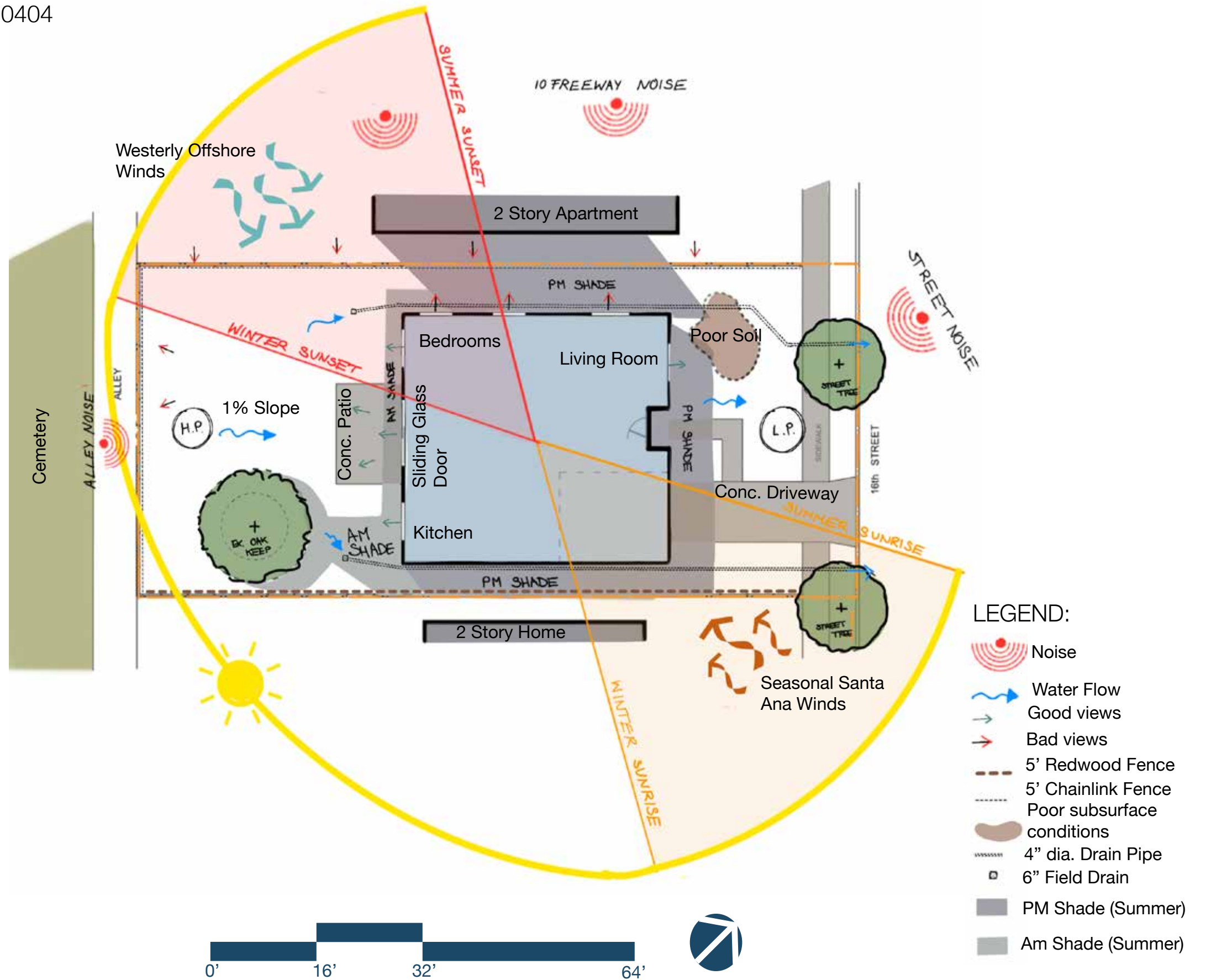
SITE ANALYSIS

Location: 1834 16th Street, Santa Monica, CA 90404
 1.23 Miles from the Pacific Ocean

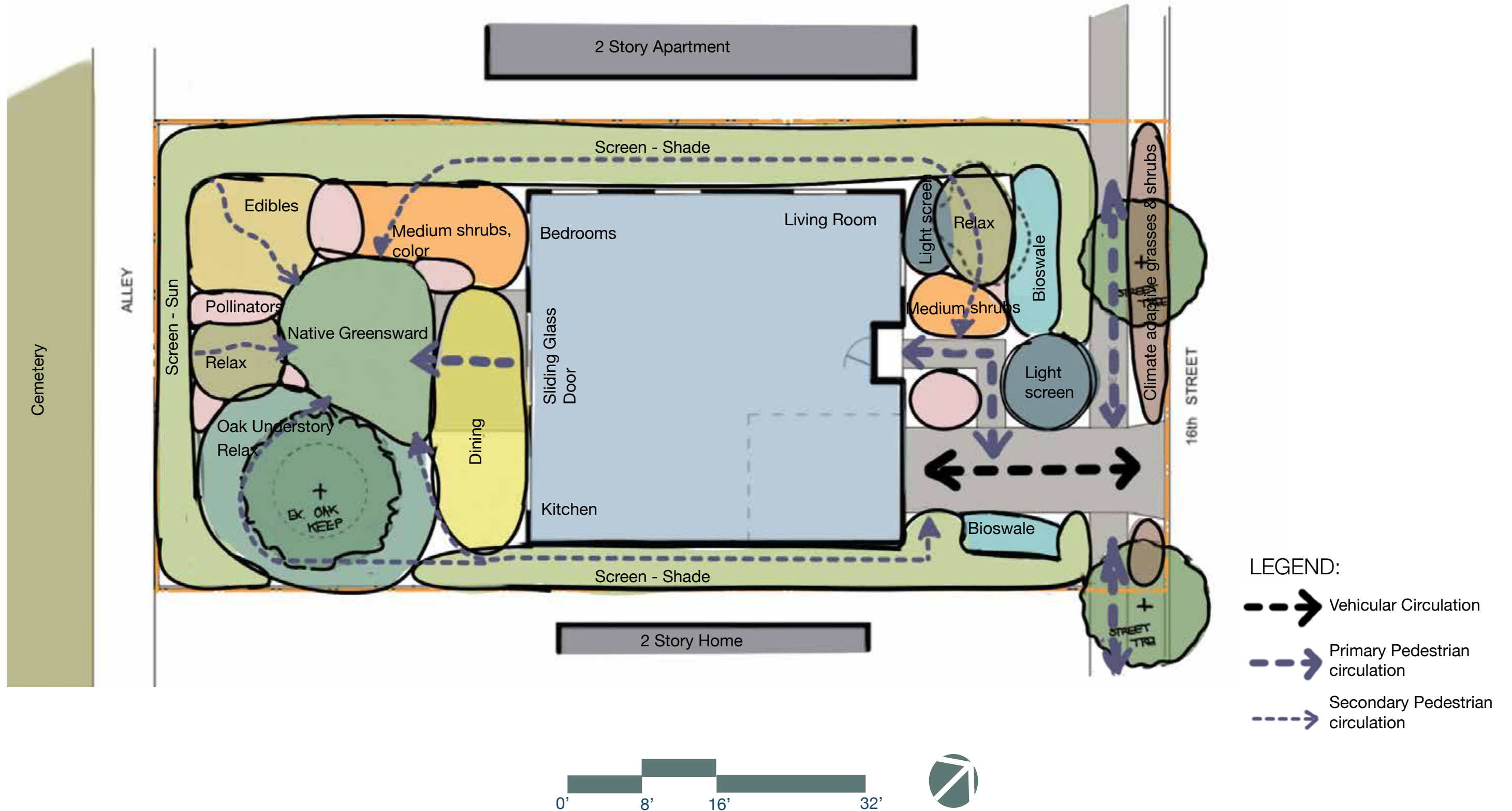


NTS ↑

WUCOLS REGION 3
 SUNSET ZONE 24 (Southern California Coastal)
 USDA Plant Zone Hardiness 11a (40°-45° F)

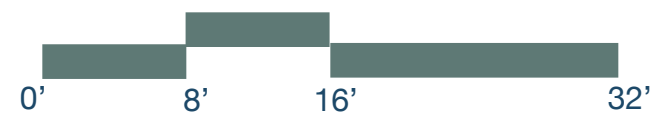
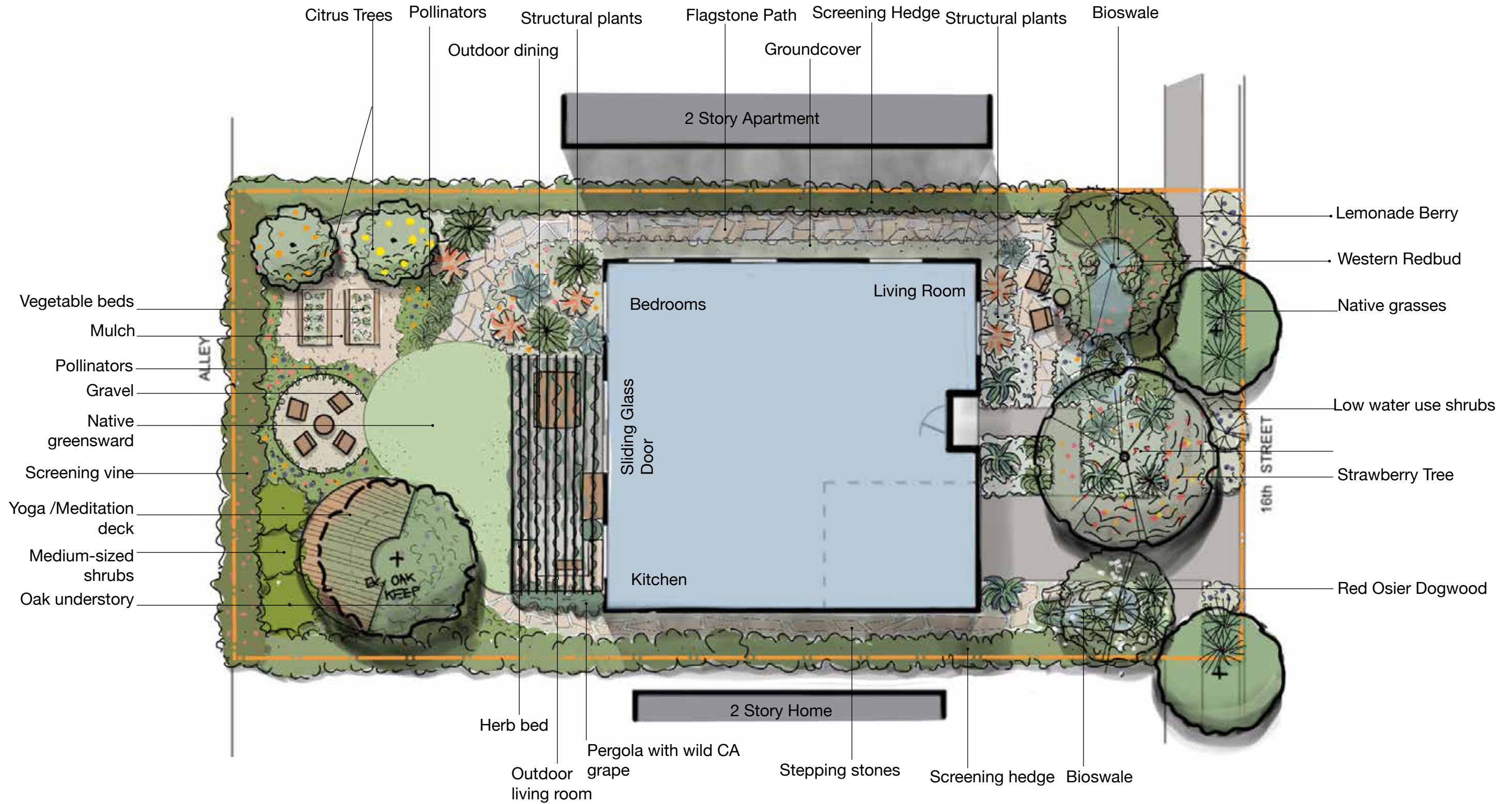


BUBBLE DIAGRAM

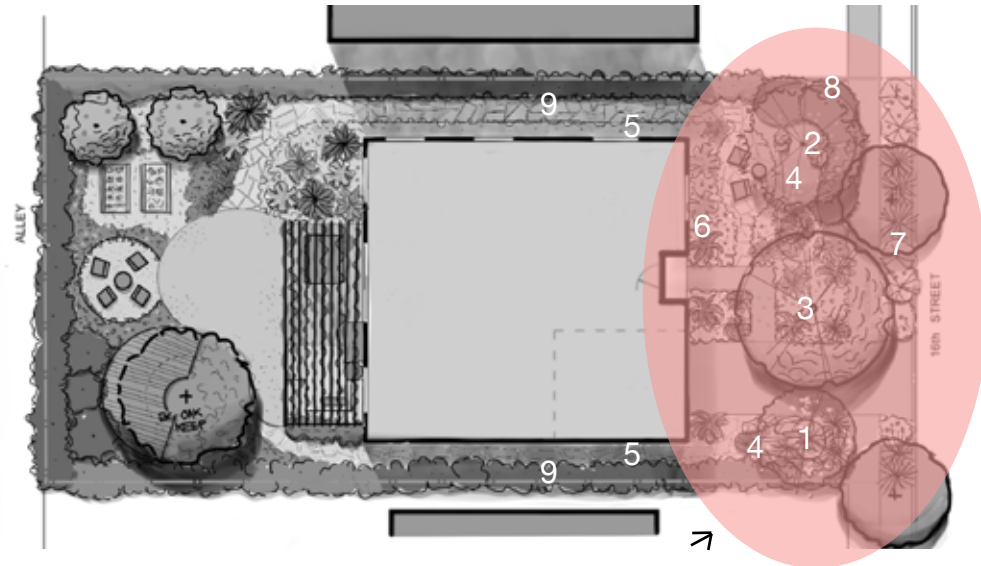


- LEGEND:
- Vehicular Circulation
 - Primary Pedestrian circulation
 - Secondary Pedestrian circulation

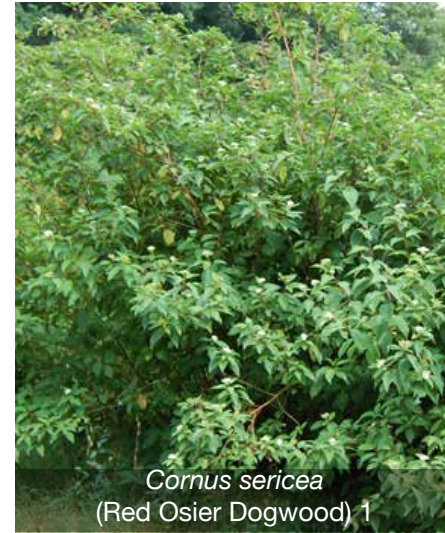
CONCEPT PLANTING PLAN



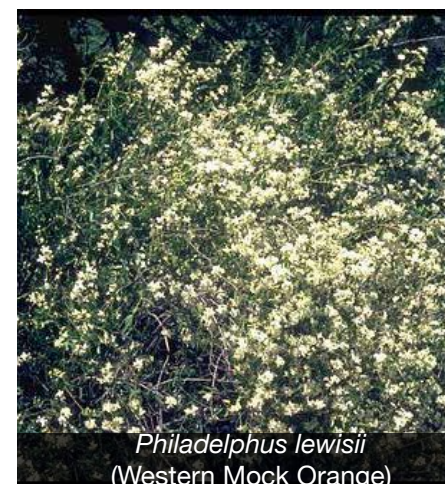
PLANT PALETTE - FRONT & SIDES:



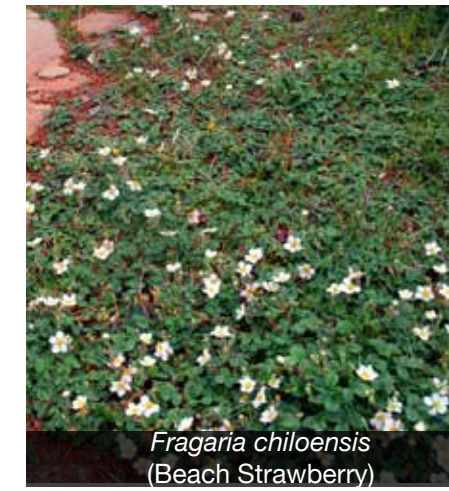
TREES: 1, 2 & 3



BIOSWALE PLANTINGS: 4



GROUNDCOVER: 5



STRUCTURAL SUCCULENT AND NATIVE MIX: 6



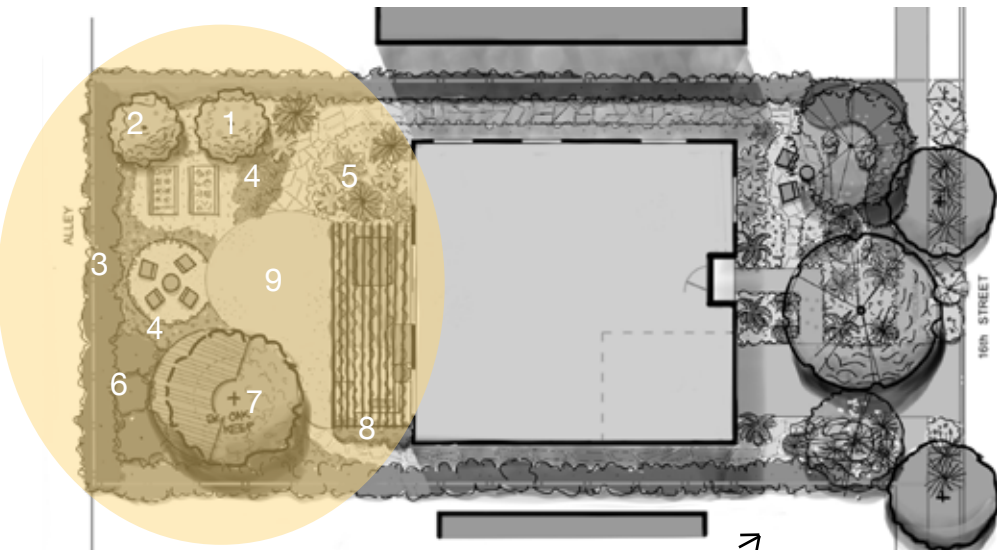
SHADE SCREENING HEDGE: 9



PARKWAY PLANTS: 7



PLANT PALETTE - BACK:



CITRUS TREES: 1 & 2



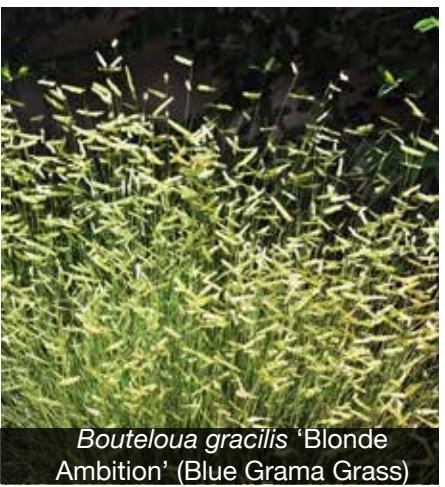
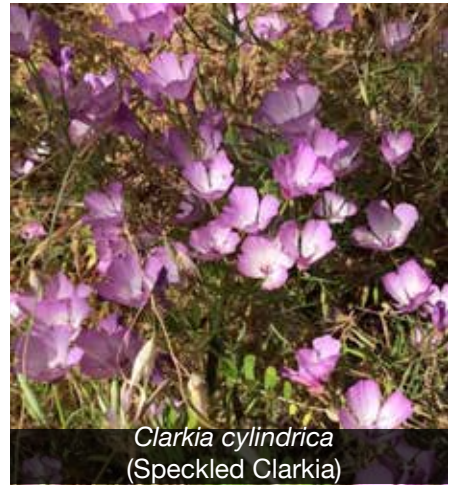
ALLEY SCREEN: 3



SUCCULENT & NATIVE MIX: 5



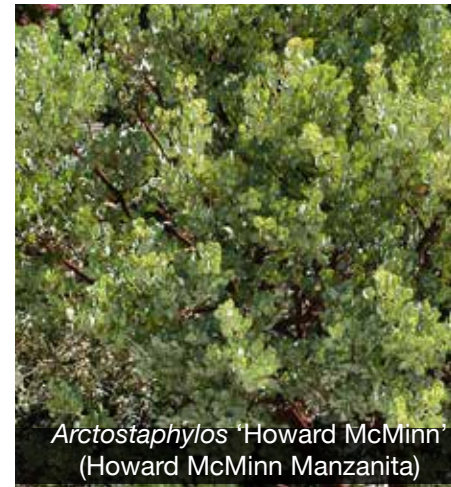
POLLINATOR MIX: 4



GREENSWARD: 9



OAK UNDERSTORY: 6 & 7



PERGOLA VINE: 8



PLANT SPECIFICATIONS

Botanical Name	Common Name	Plant Family	Mature Size (height & width)	WUCOLS (P.F. 3)	Origin	Soil Requirements	Bloom Color/ Season	Maintenance	Wildlife Supported
<i>Achillea</i> 'Moonshine'	Fern Leaf Yarrow	Asteraceae	1'-2' h; 2'-3' w	Low	CA	Fast draining soil	Yellow / Spring, Summer	Low; removal spent flowers as desired	Various pollinators, mammals
<i>Agave attenuata</i> variegata	Fox Tail Agave	Asparagaceae	3'-4' h; 4'-5' w	Low	Mexico	Fast Draining, sandy or rocky soil	Infrequent, yellow, green	Low; remove spent stalks	Pollinators, birds (Least Bell's Vireo and Southwestern Willow Flycatcher)
<i>Agrostis palens</i>	San Diego Sedge	Poaceae	.33-2.3' h	Low, Moderate, High	CA	Adaptable, moderate drainage	Evergreen, Summer deciduous / Spring blooms	Mow or shear to desired height	Butterflies, moths
<i>Arctostaphylos</i> 'Howard McMinn McMinn'	Howard McMinn Manzanita	Ericaceae	5'-7' h; 8'-10' w	Low	CA	Adaptable	White, pink / Winter, Spring	Low; prune as needed	Hummingbirds, birds, bees, moths
<i>Artemisia douglasiana</i>	Mugwort	Asteraceae	6'h; 4'w	Moderate, High	CA	Adaptable	Cream, white, yellow / Spring, Summer	Cut to ground in fall or winter (Winter deciduous)	Various butterflies, moths, insects
<i>Bouteloua gracilis</i> 'Blonde Ambition'	Blue Grama	Poaceae	4"-16" h; 2' in bloom; 2'w (root depth: 6.5')	Low	CA	Adaptable	Yellow inflorescence, Spring, Summer	Low; cut back in winter dormancy	Birds, insects
<i>Calystegia macrostegia</i> 'Anapaca Pink'	Anapaca Pink Morning Glory	Malvaceae	15-20' h	Low	CA	Adaptable	Evergreen. Pink blooms / Spring, Summer	Low	Butterflies and moths
<i>Carex spissa</i>	San Diego Sedge	Cyperaceae	6'h	Low, Moderate, High	CA	Adaptable,	Cattails / Spring	Prune with steal rake only	Butterflies, moths
<i>Cercis occidentalis</i>	Western Redbud	Fabaceae	25' h; 10-20' w	Moderate	CA	Well-drained	Pink, purple / Spring	Low; leaf litter	Birds, mammals
<i>Cornus sericea</i>	Redosier Dogwood	Cornaceae	10' h; 12'w	Moderate, High	CA	Loam, Sand or clay	White / Summer, Fall	Low; rake or prune annually	Birds
<i>Citrus paradisi</i> x 'Marsh'	Marsh grapefruit	Rutaceae	16-20' h;	Low	Barbados; natural hybrid	Adaptable	Grapefruits / Winter, early spring	Low; harvest fruit; remove dead branches	Birds, pollinators
<i>Citrus sinensis</i> 'Cara Cara'	Cara Cara orange	Rutaceae	16-20' h;	Low	Venezuela, hybrid	Adaptable	Yellow, green / Summer	Low; harvest fruit; remove dead branches	Pollinators, birds
<i>Clarkia cylindrica</i>	Speckled Clarkia	Onagraceae	1'-2' h; 1-2' w	Low	CA	Adaptable	Pink, white, lavender / Spring	Low	Butterflies, moths
<i>Dryopteris arguta</i>	Coastal Wood Fern	Saxifragaceae	2' h	Low	CA	Adaptable	n/a	Remove older fronds as they age	Butterflies, moths
<i>Eschscholzia californica</i>	California Poppy	Papaveraceae	6"-1' h; 6"-10" w	Low	Yes, once established	Fast draining soil	Orange / Feb-Sept	Low; remove spent stems at the end of the season	Insects, pollinators
<i>Fragaria chiloensis</i>	Beach Strawberry	Rosaceae	1-4' h; 2-3'w	Moderate, High	CA	Adaptable	Evergreen; white / Spring, Summer, Fall	Can be cut back any time	Butterflies, moths & beneficial insects
<i>Juncus patens</i> 'Occidental Blue'	Wire Grass, Common Rush	Juncaceae	1'-2' h, 4'-6' w	Moderate, High	CA	Adaptable	Red, brown / Spring	Low	Host to butterflies, moths
<i>Kalanchoe orgyalis</i>	Copper Spoons	Crassulaceae	4'-6' h; 4'-6' w	Very Low	Southeast Africa	Fast Draining, sandy or rocky soil	Yellow / Winter	Low; remove spent stalks if desired	Bees, butterflies, moths, birds
<i>Lavandula angustifolia</i>	English Lavender	Lamiaceae	3.5-6'h; 4-6' w	Low	Mediterranean	Adaptable	Violet / Winter, Spring	Low	Butterflies, moths
<i>Lepechinia fragrans</i>	Pitcher Sage	Lamiaceae	3-5' h; 3-5' w	Low	CA	Adaptable	Lavender / Spring, Summer, Fall	Remove spent flowers as needed	Butterflies, moths

PLANT SPECIFICATIONS (continued)

Botanical Name	Common Name	Plant Family	Mature Size (height & width)	WUCOLS (P.F. 3)	Origin	Soil Requirements	Bloom Color/ Season	Maintenance	Wildlife Supported
<i>Muhlenbergia rigens</i>	Deer Grass	Poaceae	5' h; 10' w	Low	CA	Adaptable, well-drained preferred	Yellow, crem / Spring	Low; let be for years or trim back to 3"-4"	Hummingbirds, insects
<i>Phacelia tanacetifolia</i>	Tansy leaf Phacelia	Hydrophyllaceae	2'-4' h; 1.5' w	Very Low	CA	Adaptable, well-drained preferred	Blue/ Spring	Low	Numerous bees, insects, butterflies
<i>Rhamnus californica</i> (syn. <i>Frangula</i>)	Coffeeberry	Rhamnaceae	4'-6' h ; 4'-6' w	Low	CA	Adaptable	Yellow, green / Winter, Spring / Berries / Fall	Prune as needed to keep desired shape	Small mammals, mockingbirds, birds, insects
<i>Rhus integrifolia</i>	Lemonade Berry	Cyperaceae	3-30' h; 3-20' w	Low	CA	Adaptable,	Pink, white / Spring	Prune with steal rake only	Butterflies, moths
<i>Salvia apiana var. compacta</i>	Compact White Sage	Lamiaceae	2'-3' h; 2'-4" w	Low	CA	Adaptable, well-draining	white, lavender / Spring	Remove spent flowers	Pollinators, insects
<i>Salvia clevelandii</i>	Cleveland Sage	Lamiaceae	3-4'h; 6'w	Very Low	CA	Adaptable	Purple, lavender / Spring, Summer	Cut to ground in fall or winter (Winter deciduous)	Various butterflies, moths, insects
<i>Vitis californica 'Roger's Red'</i>	Roger's Grape	Vitaceae	20-40'h; 20-40' w	Moderate, High	CA	Adaptable	Yellow / Spring Grapes / Summer	Light shaping as needed	Bees, butterflies, moths
<i>Woodwardia fimbriata</i>	Giant Chain Fern	Blechnaceae	4'-6' h ; 4'-6' w	Low, Moderate	CA	Adaptable	n/a	Prune dead fronds	Small animals, insects

References: Calscape.org; Selecttree.org; Smgrowers.com



THANK YOU!