



MALIBU CREEK STATE PARK VISITOR'S CENTER

LAND ACKNOWLEDGEMENT:

Malibu Creek State Park sits on the traditional lands belonging to the Chumash people. We come with respect and gratitude for the Chumash, who consider themselves the caretakers of this land. We acknowledge our responsibility as uninvited guests on stolen Chumash lands to locate our own knowledge and practice in a respectful relationship with Chumash sovereignties and knowledge systems that have always been here.

DESIGN INTENT

RAINBOW MEADOWS • LIGHT ON THE LAND • SEASONAL INTEREST • PLAYFUL • SUSTAINABLE



The **Rainbow Bridge** is a creation story of how the Chumash people came to mainland California. The legend goes that **Mother Earth**, Hukah, lead the **Chumash** over a bridge made from a rainbow from what is now Santa Cruz island to what is now Carpinteria.

This inspired my design of 2 contrasting **meadows, bridged** by a path that **connects** the past with the future.

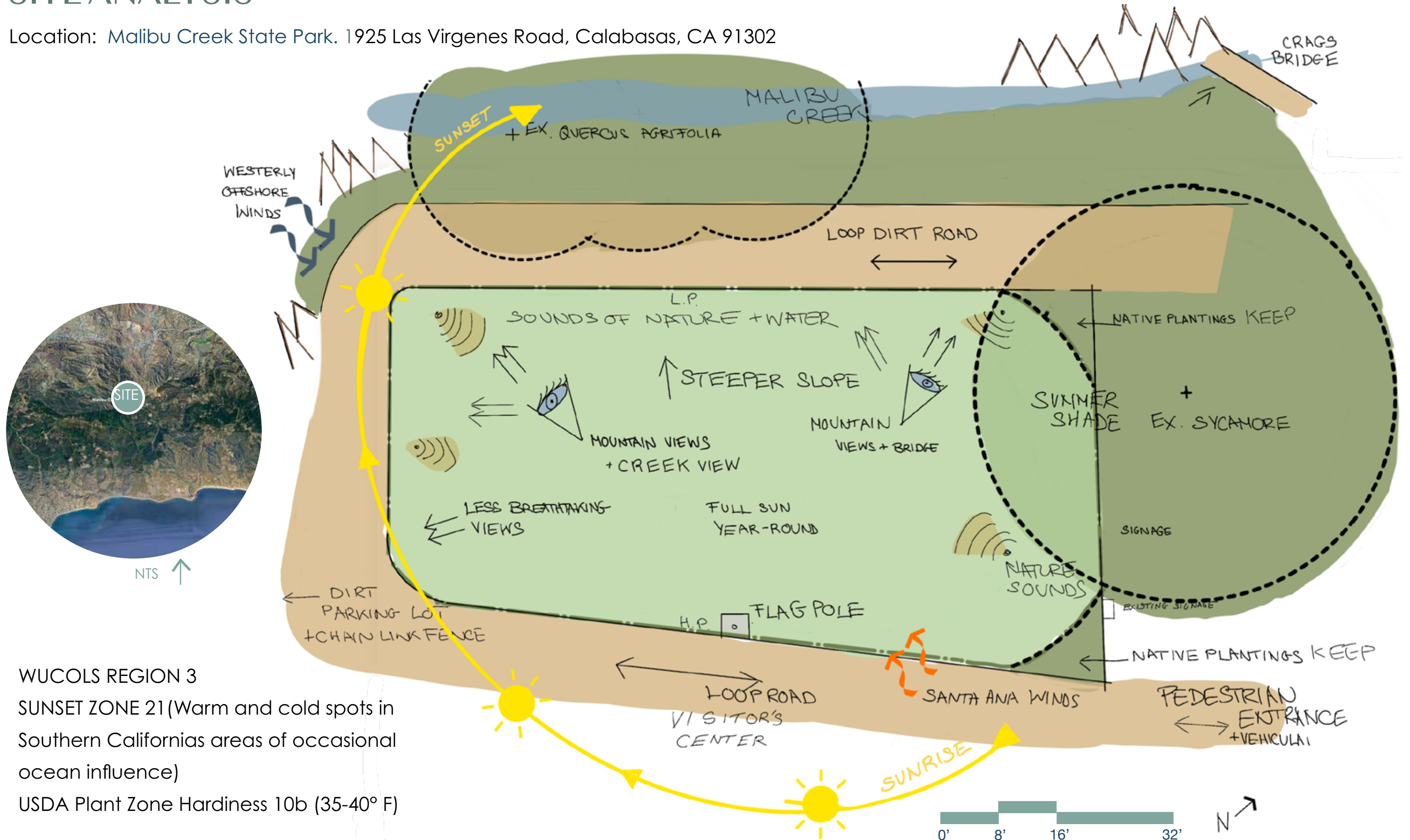
The meadow of the **past** is **wild** and **naturalistic** in appearance, reflecting a time before European arrival in California. The formal **rainbow-colored** structure of the **future** meadow symbolizes the potential for **repair, healing** and **hope** that human intervention can have on a place.

RAINBOW MEADOW PLANT PALETTE



SITE ANALYSIS

Location: Malibu Creek State Park. 1925 Las Virgenes Road, Calabasas, CA 91302



WUCOLS REGION 3

SUNSET ZONE 21 (Warm and cold spots in Southern California's areas of occasional ocean influence)

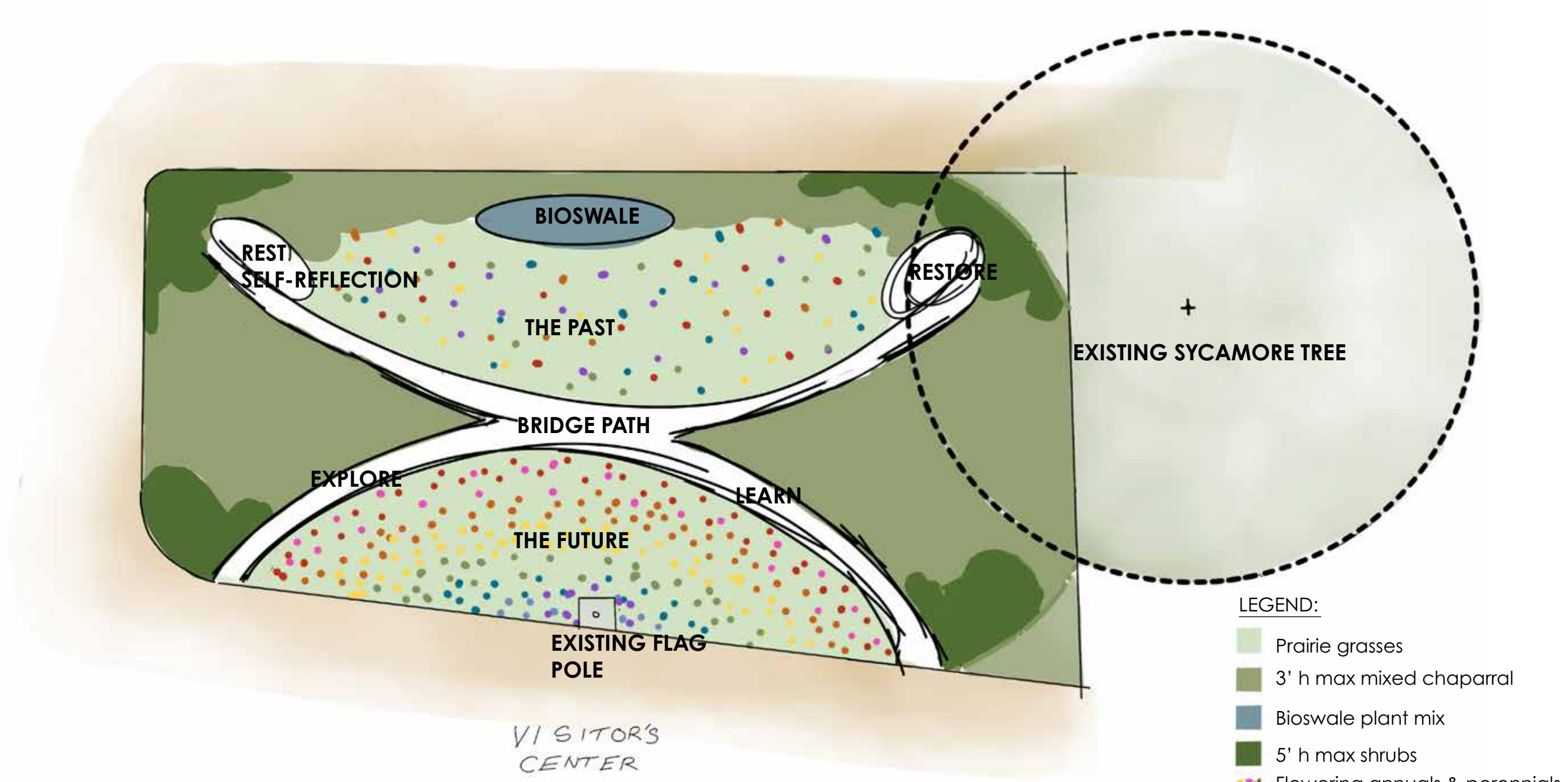
USDA Plant Zone Hardiness 10b (35-40° F)

BUBBLE DIAGRAM

RAINBOW BRIDGE GARDEN: CONNECTING THE PAST TO THE FUTURE

The '**Past Meadow**' symbolizes nature as it was, before human intervention.

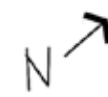
The formal rainbow structure of the '**Future Meadow**' symbolizes human intervention and hope to help heal and restore the land.



LEGEND:

- Prairie grasses
- 3' h max mixed chaparral
- Bioswale plant mix
- 5' h max shrubs
- Flowering annuals & perennials

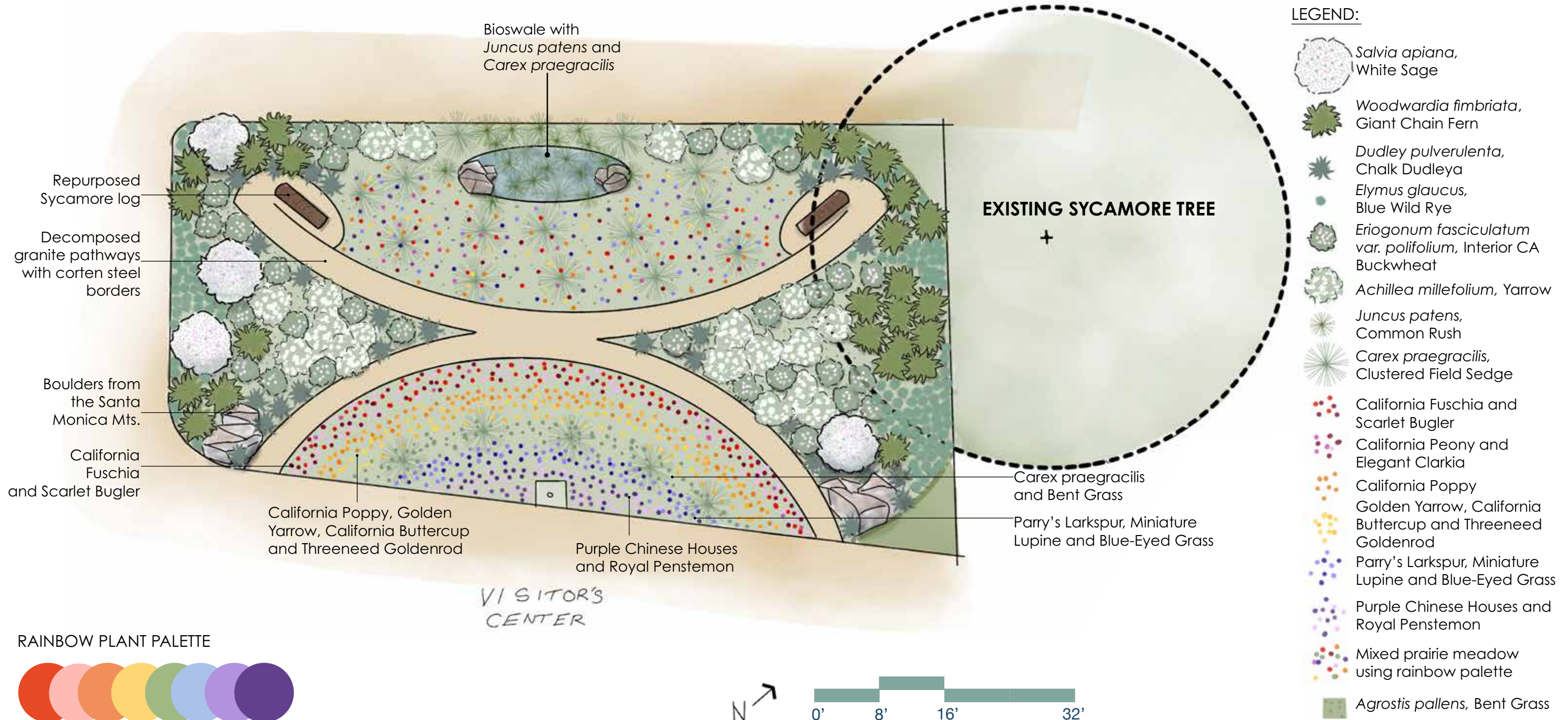
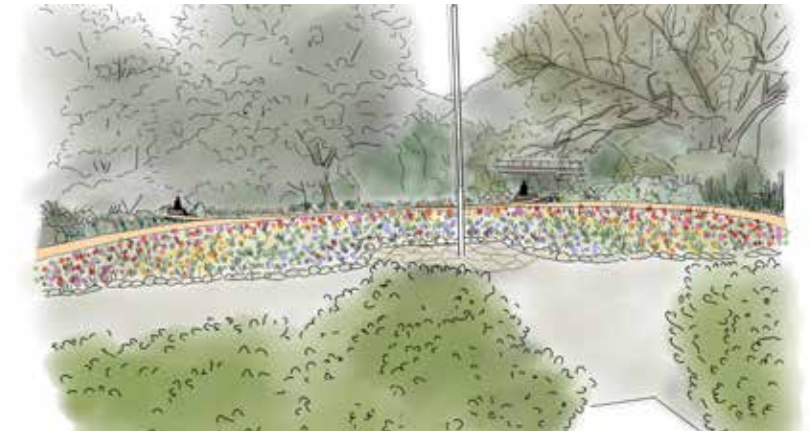
RAINBOW PLANT PALETTE



CONCEPT PLANTING PLAN

RAINBOW BRIDGE GARDEN: CONNECTING THE PAST TO THE FUTURE

The garden honors a forgotten history of the past while creating a healing intent for repair in the future.



MEADOW PLANT PALETTE THROUGH THE SEASONS:

WINTER MEADOW:



Paeonia californica California Peony
Collinsia heterophylla Purple Chinese Houses
Eschscholzia californica California Poppy
Ranunculus californicus California Buttercup
Eriophyllum confertiflorum Golden Yarrow
Agrostis palens Bent Grass
Carex praegracilis Clustered Field Sedge

SPRING MEADOW:



Paeonia californica California Peony
Penstemon centranthifolius Scarlet Bugler
Collinsia heterophylla Purple Chinese Houses
Eschscholzia californica California Poppy
Ranunculus californicus California Buttercup
Eriophyllum confertiflorum Golden Yarrow
Agrostis palens Bent Grass
Carex praegracilis Clustered Field Sedge
Lupinus bicolor Miniature Lupine
Delphinium parryi ssp. parryi Parry's Larkspur
Penstemon speciosus Royal Penstemon
Sisyrinchium bellum Blue-eyed Grass

SUMMER MEADOW:



Epilobium canum California Fuschia
Penstemon centranthifolius Scarlet Bugler
Clarkia unguiculata Elegant Clarkia
Eschscholzia californica California Poppy
Solidago velutina Threeneed Goldenrod
Eriophyllum confertiflorum Golden Yarrow
Agrostis palens Bent Grass
Carex praegracilis Clustered Field Sedge
Delphinium parryi ssp. parryi Parry's Larkspur
Penstemon speciosus Royal Penstemon

FALL MEADOW:



Epilobium canum California Fuschia
Clarkia unguiculata Elegant Clarkia
Eschscholzia californica California Poppy
Solidago velutina Threeneed Goldenrod
Agrostis palens Bent Grass
Carex praegracilis Clustered Field Sedge

RAINBOW PLANT PALETTE



PLANT PALETTE: FILLS, EDGES & BIOSWALE

EDGES & FILLS:

Eriogonum fasciculatum
var. *polifolium*, Interior CA Buckwheat



Woodwardia fimbriata, Giant Chain Fern



Salvia apiana, White Sage



Elymus glaucus, Blue Wild Rye

BIOSWALE:



Juncus patens, Common Rush





Carex praegracilis, Clusters of Field Sedge (close up)









Carex praegracilis, Clusters of Field Sedge

PLANT LEGEND

Plant Symbol	Botanical Name	Common Name	Plant Family	Mature Size (height & width)	WUCOLS (P.F. 3)	Bloom Color/ Season	Maintenance
	<i>Achillea millefolium</i>	Yarrow	Asteraceae	1'-3' h; 3'-5' w	Low	White / Spring, Summer	Low; tolerates light mowing
	<i>Agrostis pallens</i>	Bent Grass, Thin Grass	Poaceae	.33'-2' h	Low	Green / Spring	Low; lightly mow if desired
	<i>Carex praegracilis</i>	Clustered Field Sedge	Poaceae	2-3.5' h; 3.5' w	Low	Green / Spring	Mow or shear to desired height
	<i>Clarkia unguiculata</i>	Elegant Clarkia	Onagraceae	3.3' h; 3' w	Low	Red / Summer, Fall	Low; prune spent flowers as needed (winter semi-deciduous)
	<i>Collinsia heterophyla</i>	Purple Chinese Houses	Scrophulariaceae	.33'-1.6'; 4" w	Low	Purple, Blue, Violet / Winter, Spring	Low; prune spent flowers as needed
	<i>Delphinium parryi</i> ssp. <i>parryi</i>	Parry's Larkspur	Ranunculaceae	.5'-3.5' h; 3' w	Low	Blue, Purple, White / Spring, Summer	Low; cut back in winter dormancy; prune spent flowers as needed
	<i>Dudleya pulverulenta</i>	Chalk Dudleya	Crassulaceae	.3'-1' h; up to 3' h	Very Low	Evergreen. Pink blooms / Spring, Summer	Low; remove spent flower stalks
	<i>Elymus glaucus</i>	Blue Wild Rye	Poaceae	1'-5' h; 1' w	Low	Yellow / Summer	Low
	<i>Epilobum canum</i>	California Fuschia	Onagraceae	.25-1.5 h' 2-3'w	Low	Red, fuschia/ Summer, Fall	Low
	<i>Eriogonum fasciculatum</i> var. <i>polifolium</i>	Interior California Buckwheat	Polygonaceae	2-3'h; 3-4' w	Low	Cream, White, Pink / Summer	Low; remove spent flowers if needed
	<i>Eriophyllum confertiflorum</i>	Golden Yarrow	Asteraceae	1.6-2.3 h' 1.5w	Low	Yellow / Winter, Spring, Summer	Low
	<i>Eschscholzia californica</i>	California Poppy	Papaveraceae	.16'-2' h; 1'-2' w	Low	Orange / Feb-Sept	Low; remove spent stems if desired
	<i>Juncus patens</i>	Wire Grass	Junaceae	1-3' h; 3'w	Low	Brown / Spring, Summer, Fall	Low
	<i>Lupinus bicolor</i>	Miniature Lupine	Fabaceae	.26-1.3'; h' 1'w	Low	Blue, Violet, White / Spring	Low; remove spent stems if desired
	<i>Paeonia californica</i>	California Peony	Paeoniaceae	2.5' h	Low	Red, Purple / Winter, Spring	Low; remove spent stems at the end of the season
	<i>Penstemon centranthifolius</i>	Scarlet Bugler	Scrophulariaceae	2-4'h; 1'w	Moderate, High	Red / Spring, Summer	Low; remove spent stems if desired

PLANT LEGEND (continued)

Plant Symbol	Botanical Name	Common Name	Plant Family	Mature Size (height & width)	WUCOLS (P.F. 3)		Maintenance
	<i>Penstemon speciosus</i>	Royal Penstemon	Scrophulariaceae	2-2.5' h; 2'w	Low	Blue, Lavender, Purple / Spring, Summer	Low; removal spent flowers as desired
	<i>Ranunculus californicus</i>	California buttercup	Ranunculaceae	.6'-2.3' h	Low	Yellow / Winter, Spring	Low; remove spent stalks
	<i>Salvia apiana</i>	White Sage	Lamiaceae	3'-5' h; 3' - 8'w	Very Low	White, Light Lavender / Spring, Summer, Winter	Low; remove spent flower stalks
	<i>Sisyrinchium bellum</i>	Blue-eyed Grass	Iridaceae	4"-12"h	Low	Blue, Violet / Spring	Low; prune as needed
	<i>Solidago velutina</i>	Threeneed Goldenrod	Asteraceae	.7'-3'	Low	Yellow / Summer, Fall	Low; prune as needed
	<i>Woodwardia fimbriata</i>	Giant Chain Fern	Blechnaceae	4'-6' h; 4'-6' w	Low, Moderate	Green fronds / Spring	Low

A top-down view of a lush garden bed. The ground is covered with dense, green, feathery foliage. Interspersed among the leaves are several clusters of bright red, tubular flowers. There are also several yellow, bell-shaped flowers and a few pink, round blossoms. The overall scene is vibrant and colorful.

THANK YOU!