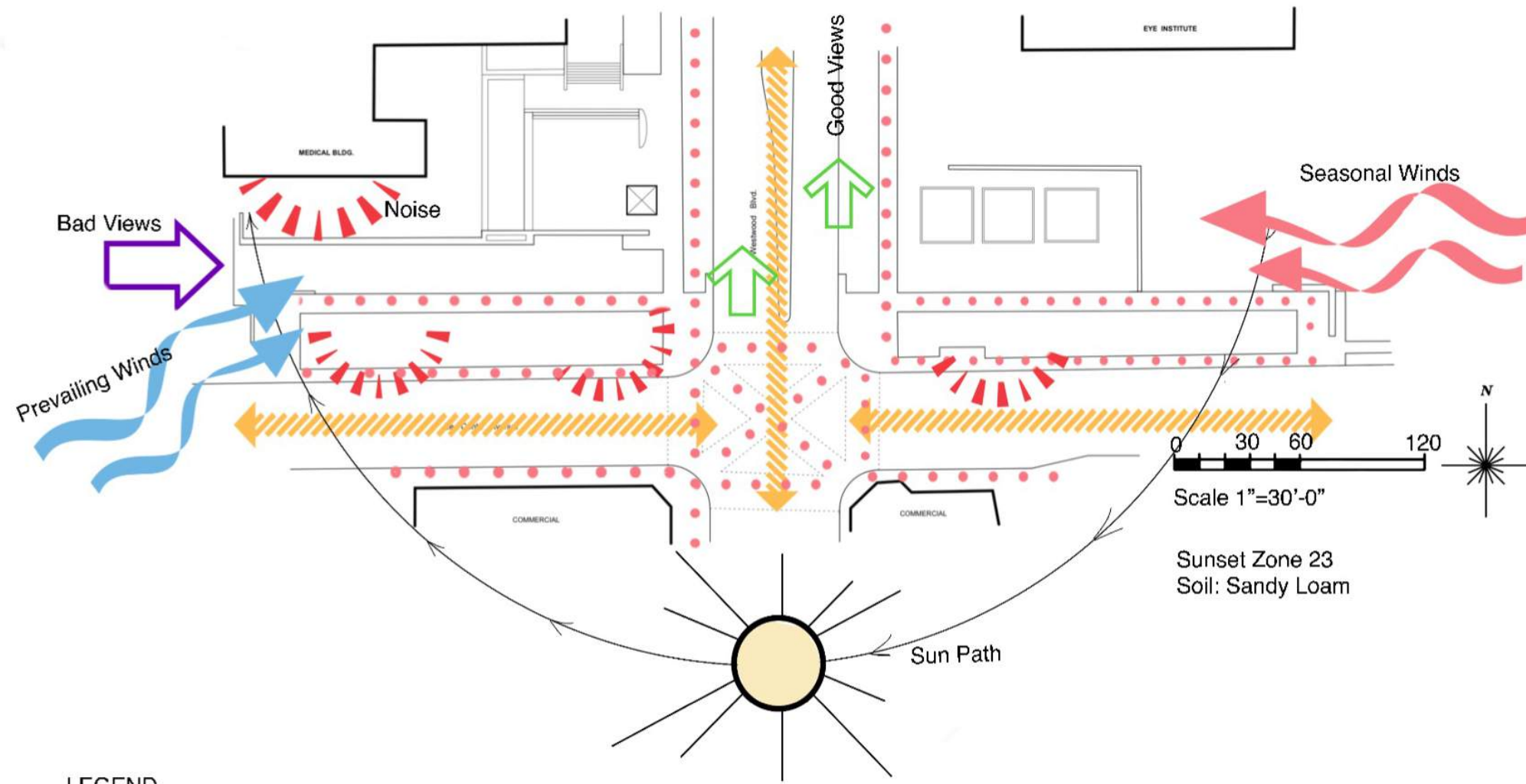


# UCLA SOUTH ENTRANCE

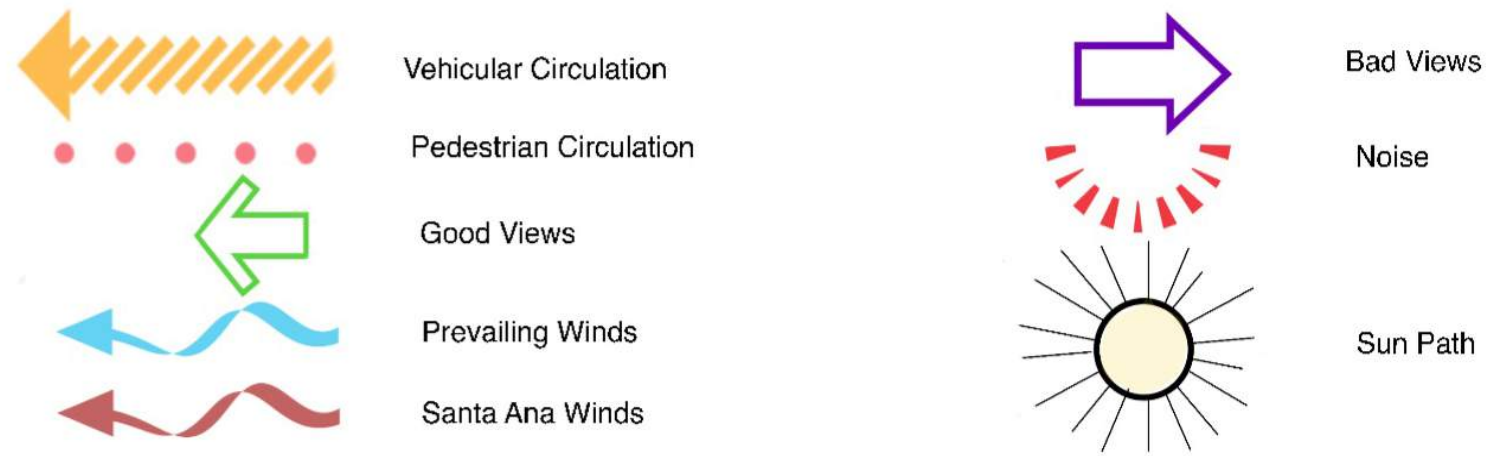
TRACY WOLK  
LANDSCAPE DESIGN 5  
SPRING 2023  
PAMELA BRIEF, INSTRUCTOR

# SITE ANALYSIS

## EXISTING CONDITIONS

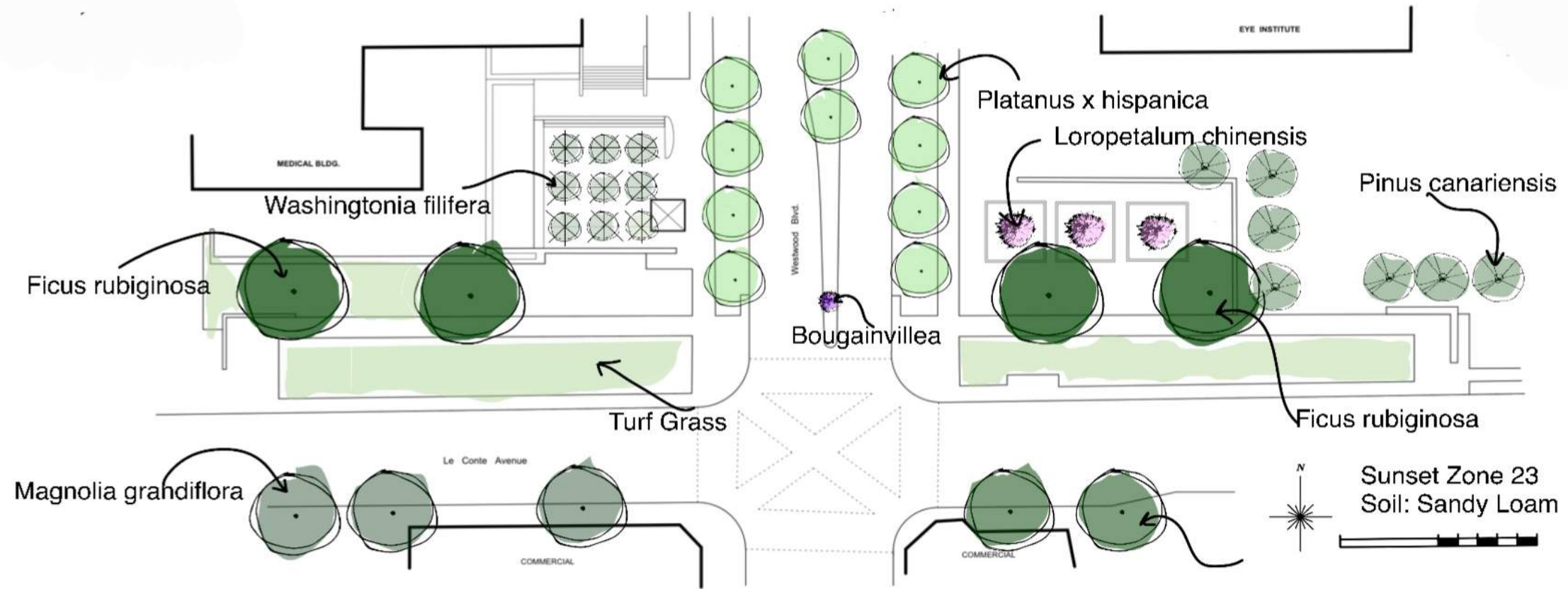


### LEGEND



# SITE ANALYSIS

## EXISTING PLANT MATERIALS



Ficus rubiginosa



Turf Grass



Washingtonia filifera



Platanus hispanica



Bougainvillea



Loropetalum chinensis



Pinus canariensis



Ficus microcarpa



Magnolia grandiflora

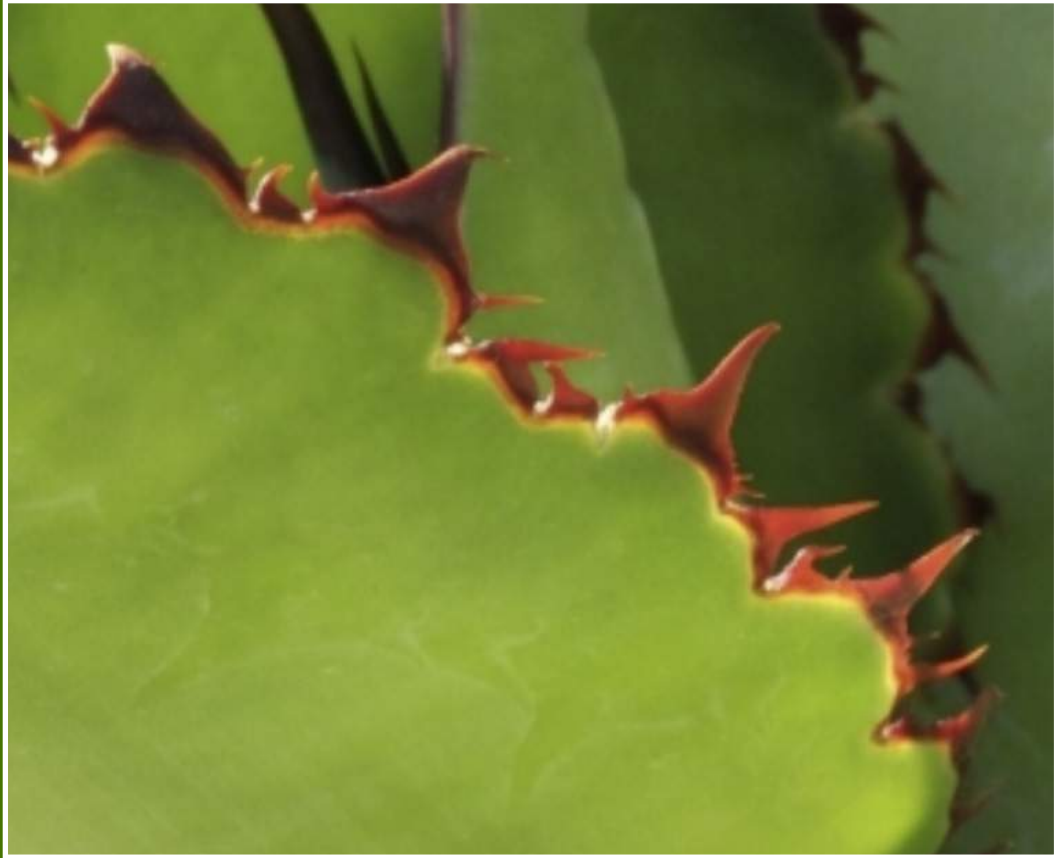
# INSPIRATION

DRIFTS OF COLOR



# INSPIRATION

DRIFTS OF TEXTURE



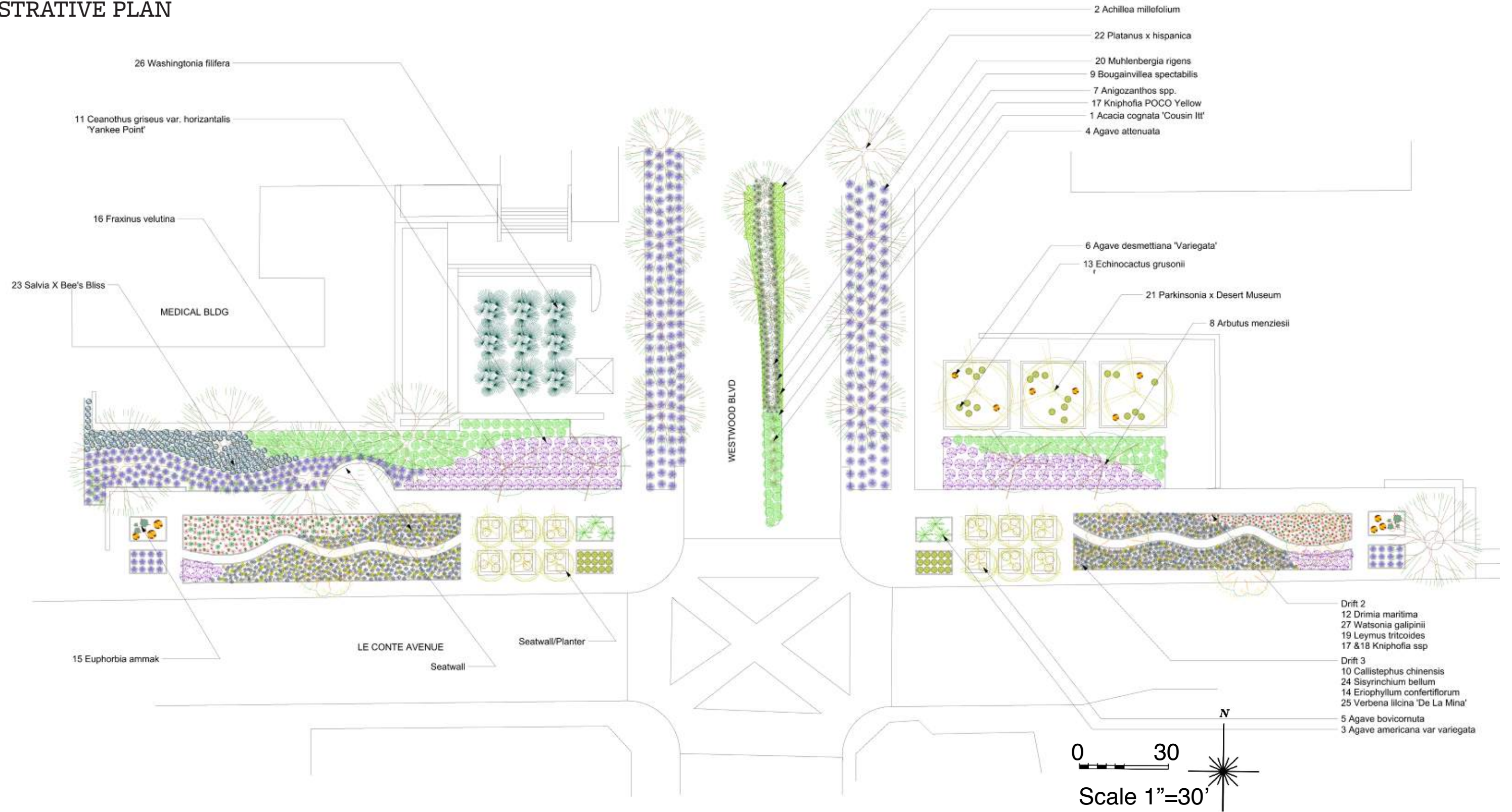
# PLANTING PLAN CONCEPT

UCLA's south entry, at the intersection of Le Conte Avenue and Westwood Blvd, is primary entry point for a busy corridor utilized by students, medical staff, and visitors to this beautiful, large, and historic university. The goal of my design was to create a **strong** entry statement so that this main entrance of the campus feels more **impactful** and **bold**. Drifts of **colorful** flowers, supported by mounding grass creates a **soft** undulating meadow with seasonal interest. An alee of planter boxes with ample space for seating contain **vibrant** and **striking** Parkinsonia X 'Desert Museum'. Mass plantings of golden barrel cactus add to the **drama** while maintaining a low enough profile to not hinder traffic and jeopardize pedestrian safety. All plant materials in this **lively** design have low water requirements to help UCLA reduce its dependence on the municipal water supply.



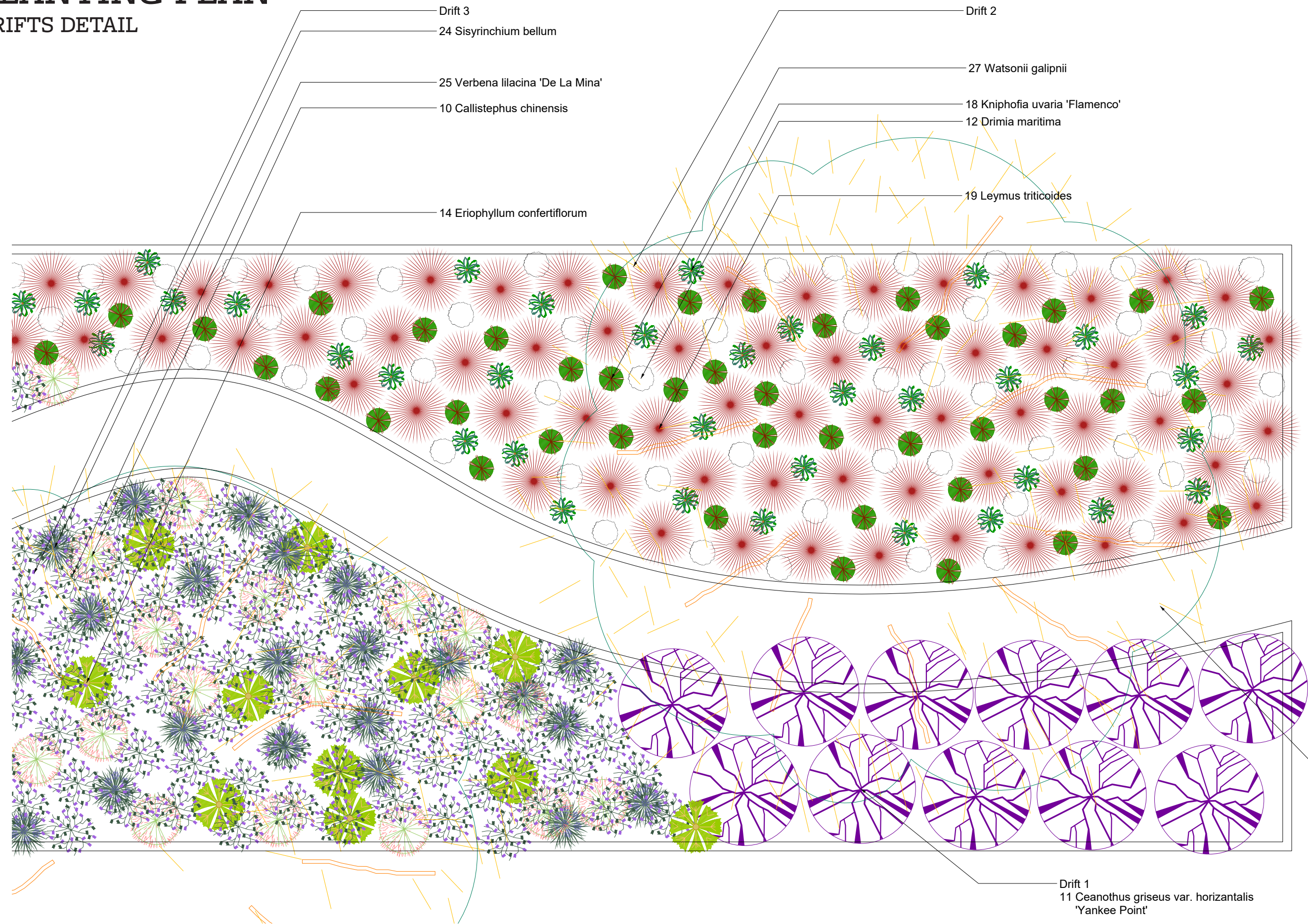
# PLANTING PLAN

## ILLUSTRATIVE PLAN



# PLANTING PLAN

## DRIFTS DETAIL



- Drift 3
- 24 *Sisyinchium bellum*
- 25 *Verbena lilacina* 'De La Mina'
- 10 *Callistephus chinensis*
- 14 *Eriophyllum confertiflorum*

- Drift 2
- 27 *Watsonii galipnii*
- 18 *Kniphofia uvaria* 'Flamenco'
- 12 *Drimia maritima*
- 19 *Leymus triticoides*

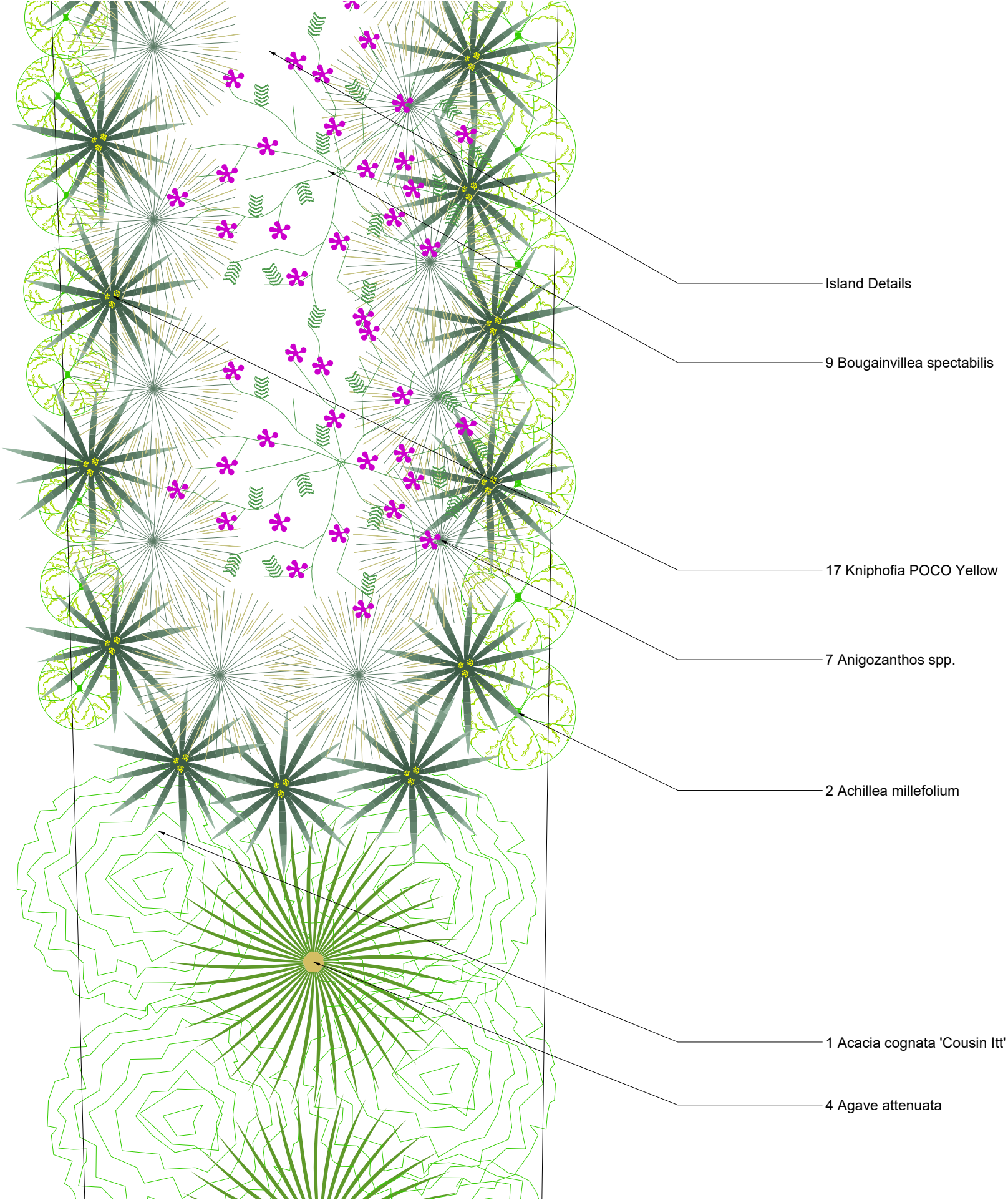
16 *Fraxinus velutina*

- Drift 1
- 11 *Ceanothus griseus* var. *horizontalis* 'Yankee Point'



# PLANTING PLAN

## ISLAND DETAILS



# PLANTING PLAN

## PLANT SCHEDULE

### Plant list

	<u>ID</u>	<u>Species</u>	<u>Common name</u>	<u>Amount</u>
	1	Acacia cognata 'Cousin Itt'	Cousin Itt Acacia	164
	2	Achillea millefolium	Common Yarrow	110
	3	Agave americana var. variegata	Century plant 'Variegata'	6
	4	Agave attenuata	Foxtail Agave	22
	5	Agave bovicornuta	Cow's Horn Agave, Little Lettuce, Cowhorn Agave	36
	6	Agave desmettiana 'Variegata'	Variegated Dwarf Smooth Agave	12
	7	Anigozanthos spp.	Kangaroo paw	69
	8	Arbutus menziesii	Pacific Madrone	4
	9	Bougainvillea spectabilis	Great bougainvillea	19
	10	Callistephus chinensis	Chinese Aster	209
	11	Ceanothus griseus var. horizontalis 'Yankee Point'	Yankee Point California Lilac	155
	12	Drimia maritima	Sea Squill	102
	13	Echinocactus grusonii	Golden Barrel	50
	14	Eriophyllum confertiflorum	Golden Yarrow	143
	15	Euphorbia ammak	Candelabra Spurge	2
	16	Fraxinus velutina	Velvet Ash	5
	17	Kniphofia POCO Yellow	Red Hot Poker, Torch lily, Poker Plant	74
	18	Kniphofia uvaria 'Flamenco'	Flamenco Red Hot Poker	75
	19	Leymus triticoides	Beardless wildrye	165
	20	Muhlenbergia rigens	Deergrass	375
	21	Parkinsonia x 'Desert Museum'	Blue Palo Verde 'Desert Museum'	15
	22	Platanus X hispanica	London Plane	15
	23	Salvia X Bee's Bliss	Bee's Bliss Sage	148
	24	Sisyrinchium bellum	Western Blue-Eyed Grass	205
	25	Verbena lilacina "De La Mina"	De La Mina Verbena	689
	26	Washingtonia filifera	California Fan Palm	9
	27	Watsonii galipnii	Bugle Lily	96

# PLANT PALETTE

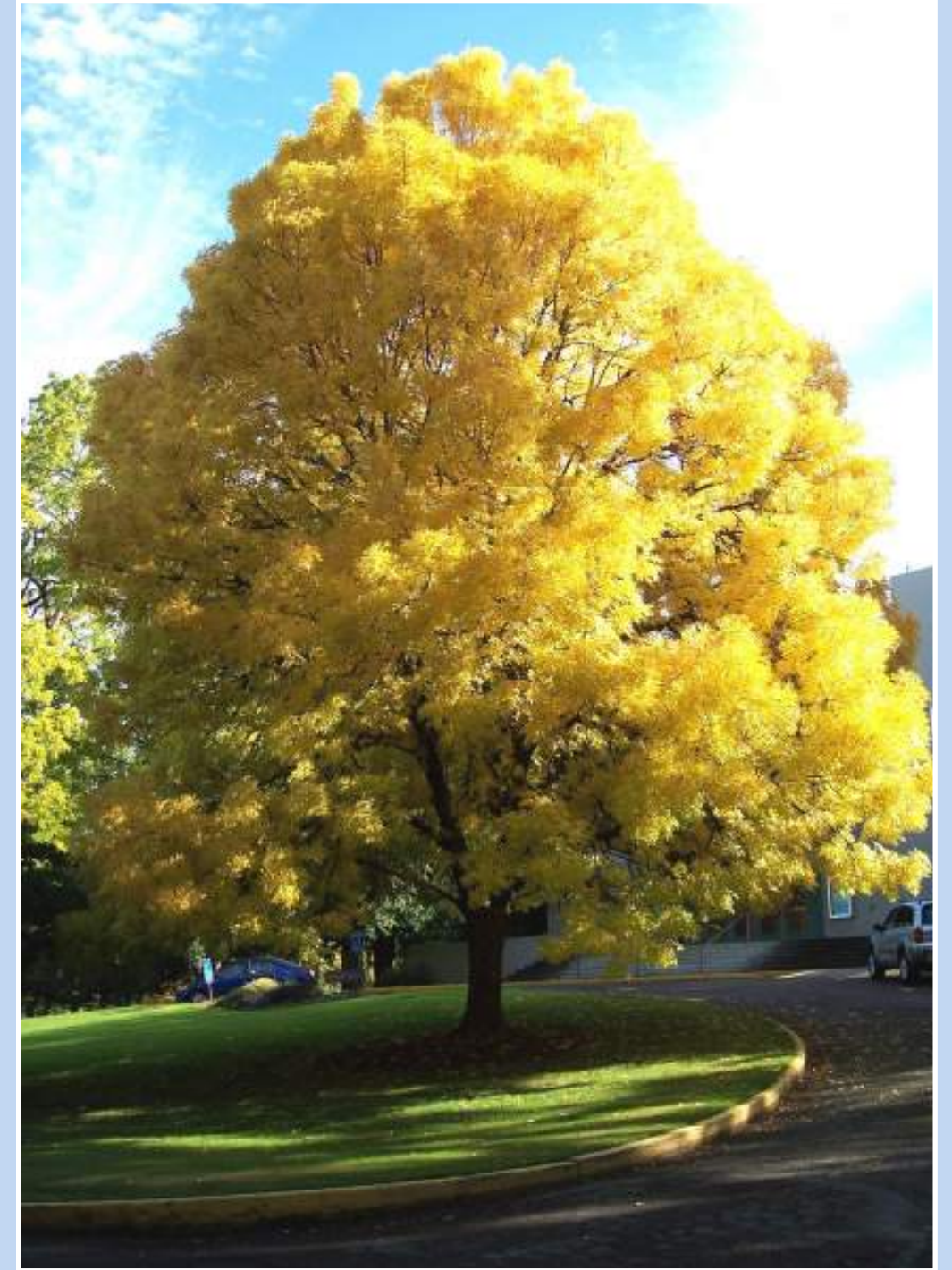
## TREES



*Parkinsonia X 'Desert Museum'*  
Desert Museum Palo Verde



*Arbutus menziessii*  
Pacific Madrone



*Fraxinus velutina*  
Velvet Ash

# PLANT PALETTE

## SHRUBS



*Agave americana* variegated  
Variagated Century Plant



*Muhlenbergia rigens*  
Deer Grass



*Agave desmettiana* 'Variegata'  
Variegated Smooth Agave

**PLANT PALETTE**  
SHRUBS AND SUCCULENTS



*Agave bovicornuta*  
Cow Horn Agave



*Euphorbia ammak*  
Candalabra Spurge



*Agave parryi* var *truncata*  
Artichoke Agave



*Ceanothus griseus horizontalis* 'Yankee Point'  
Yankee Point California Lilac



*Echinocactus grusonii*  
Golden Barrel Cactus

# PLANT PALETTE

## SHRUBS AND SUCCULENTS



*Drimia maritima*  
Sea Squill



*Watsonia galipinii*  
Bugle Lily



*Leymus tricoide* 'Lagunita'  
Lagunita Wild Rye



*Kniphofia uvaria*  
Red Hot Poker

# PLANT PALETTE

## SHRUBS AND SUCCULENTS



*Callistephus chinensis*  
*Aster chinensis*



*Erigeron karvinskianus*  
Santa Barbara Daisy



*Salvia leucophylla*  
Bee's Bliss



*Sysirinchium bellum*  
Blue Eyed Grass



*Eriophyllum confertiflorum*  
Yellow Yarrow



*Verbena liliacina* 'De La Mina'  
De La Mina Verbena

**PLANT PALETTE**  
SHRUBS AND GRASSES



*Acacia cognata* 'Cousin Itt'  
Cousin Itt River Wattle



*Kniphofia* POCO Yellow  
Red Hot Poker



*Anigozanthos* Kanga Burgundy  
Burgundy Kangaroos Paw



*Agave attenuata*  
Foxtail Agave



*Bougainvillea* ssp

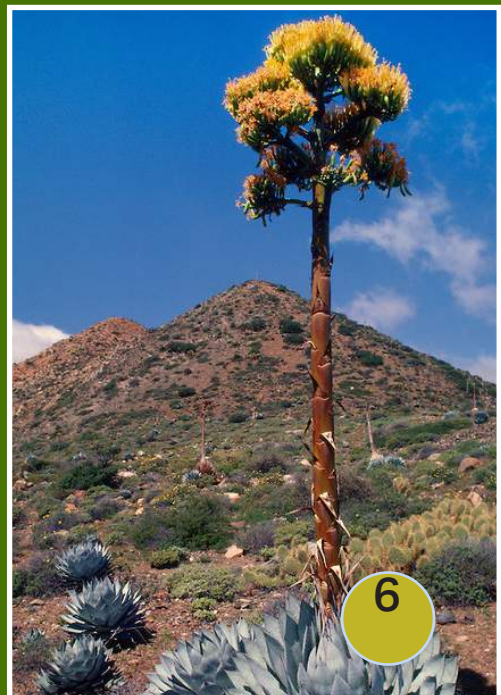
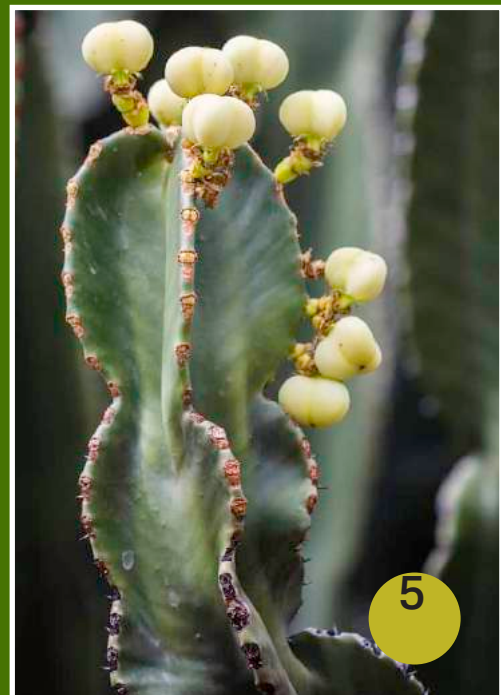


*Achillea millefolium*  
Common Yarrow



# MIXED DROUGHT TOLERANT TEXTURED DRIFTS

Scientific Name	Common Name	Height	Spread	Hydrozone	WUCOLS	California Native
1 Agave americana var.	Variegated Century Plant	6'	6'	Low	1	No
2 Muhlenbergia rigens	Deer Grass	5'	4'	Low	1	Yes
3 Agave desmettiana 'Variegata'	Variegated Smooth Agave	3'	4'	Low	1	No
4 Agave bovicornuta	Cow Horn Agave	3'	5'	Low	1	No
5 Euphorbia ammak	Candelabra Spurge	20'	8'	Low	1	No
6 Agave parryi var truncata	Artichoke Agave	2'	3'	Low	1	Yes



# COLOR DRIFT 1 AND 2

Scientific Name	Common Name	Height	Spread	Hydrozone	WUCOLS	California Native
1 <i>Drimys maritima</i>	Sea Squill	2'	2'	Low	1	No
2 <i>Ceanothus griseus horizontalis</i> 'Yankee Point'	California Lilac	3'	10'	Low	1	Yes
3 <i>Watsonia galpinii</i>	Bugle Lily	3'	4'	Low	1	Yes
4 <i>Leymus triticoides</i> 'Lagunita'	Lagunita Wild Rye	1'	1'	Low	1	Yes
5 <i>Kniphofia uvaria</i>	Red Hot Poker	6'	1'	Low	1	No



# COLOR DRIFT 3

Scientific Name	Common Name	Height	Spread	Hydrozone	WUCOLS	California Native
1 Callistephus chinensis	Chinese Aster	3'	2'	Low	1	No
2 Erigeron karvinskaianus	Santa Barbara Daisy	1'	5'	Low	1	No
3 Salvia 'Bee's Bliss'	Bee's Bliss Sage	1'	6'	Low	1	Yes
4 Sisyrinchium bellum	Blue-Eyed Grass	2'	3"	Low	1	Yes
5 Eriophyllum confertiflorum	Yellow Yarrow	2'	1.5'	Low	1	Yes
6 Verbena liliacina 'De La Mina'	De La Mina Verbena	3'	4'	Low	1	Yes



1



2



3



4



5



6

# ISLAND AND PARKWAY WITH PLATANUS X HISPANICA

Scientific Name	Common Name	Height	Spread	Hydrozone	WUCOLS	California Native
1 <i>Acacia cognata</i> 'Cousin Itt'	Cousin Itt River Wattle	3'	6'	Low	2	No
2 <i>Kniphofia</i> POCO Yellow	Red Hot Pocker	2'	2'	Low	2	No
3 <i>Anigozanthos</i> Kanga Burgandy	Burgandy Kangaroos Paw	2'	2'	Low	2	No
4 <i>Agave attenuata</i>	Foxtail Agave	4'	6'	Low	2	No
5 <i>Bougainvillea</i> ssp	Bougainvillea	30'	10'	Low	2	No
6 <i>Achillea millefolium</i>	Common Yarrow	3'	1.5'	Low	2	Yes



# TREE DETAILS

Scientific Name	Common Name	Height	Spread	Hydrozone	WUCOLS	California Native
1						
Parkinsonia X 'Desert Museum'	Desert Museum Palo Verde	30'	25'	Low/VL	1	Yes
2						
Fraxinus velutina	Velvet Ash	40'	30'	Low	1	Yes
3						
Arbutus menziessii	Pacific Madrone	100'	25'	Low	1	Yes



**THANK YOU**

**TRACY WOLK  
LD 5 SPRING 2023  
PAMELA BRIEF, INSTRUCTOR**