

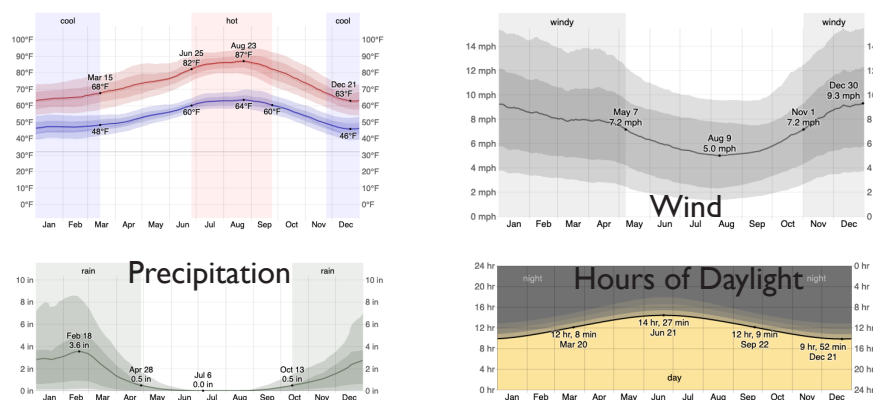
You can't stop progress – but after the bulldozers, there will be planting. Our site consists of engineered, sloped remains of construction alongside 2 residential streets, totalling over 70,000 square feet of planting potential, from which we get to do so much more such as support endangered plant, animal and insect species which would have a harder time naturally reestablishing after construction.

Existing features includes an intersection, which means cars stopping, turning and accelerating, and drivers texting and speaking on the phone. We also have sidewalk and pedestrians, as well as City requirements to incorporate. A typical drainage ditch rims the top of our site, above which the slope is a mellow 4:1 compared with the 2:1 slope towards the sidewalk. There are two rocky outcroppings on the west side.

The area is arid and exposed to the elements. In fact the Sun is a significant design factor for us to consider. At this location Lynmere Dr. runs nearly east-west which means drivers will be looking into the sun, depending on their journey time. During the winter months, drivers heading south on W Janss Rd will also face into the sun as they approach the intersection mid-morning. Another design consideration, the west side of the site will receive morning sun and have afternoon shade, while the east side will remain shady and cool in the mornings but bake throughout the day and receive the last of the days light. Nevertheless, there are plenty of opportunities granted here.

First lets talk about safety. We are addressing an intersection, the axis of these streets is something to consider and is pretty much due NWE. Drivers may find it difficult to see oncoming traffic or see clearly 'around the corner' at certain times of day. Microclimatically, either side of our main site have very different sun exposures, with the east side having the broadest and toughest daily journey.

The user will be Bikers and Pedestrians, Drivers - Residents, Postal Carriers, guests. They will be persistent travellers and will remember what lines this path. The faces of these hillsides will be alive and the plants themselves will become individual faces, 'Did you see that

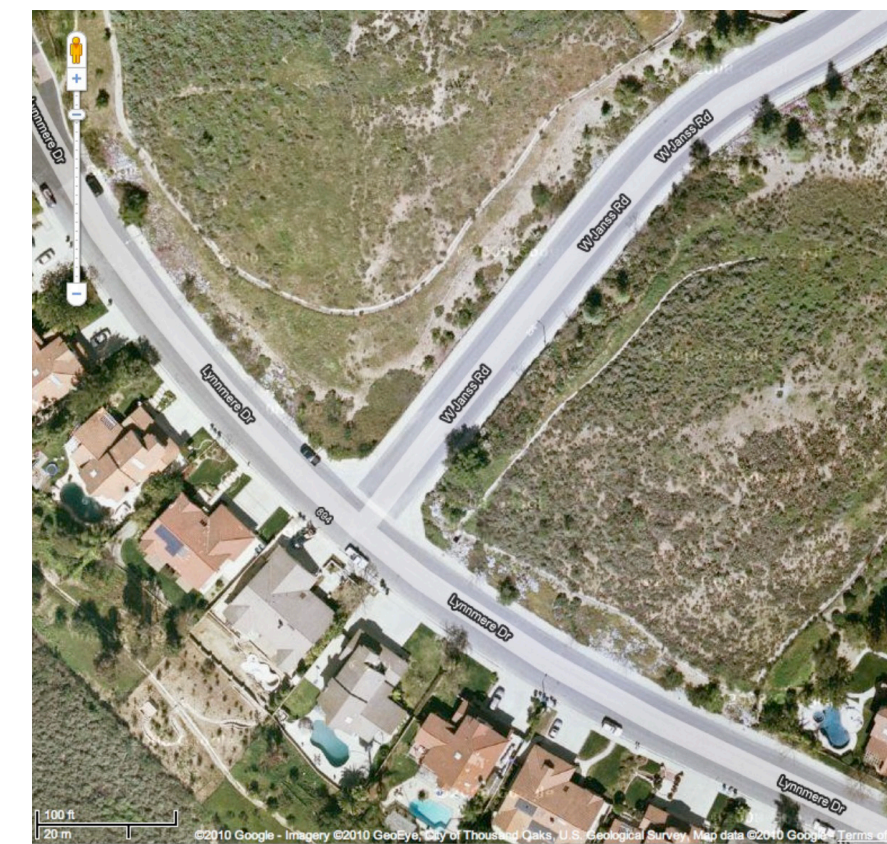


Flannelbush? you may say to your spouse as you unpack the groceries, speaking of the trees like you might have of the vegetable stand down in the village. Speaking of, why not plant some unusual and intriguing species, more than merely covering the dirt? The hills are alive, spinning out sounds and sights, commanding us to stop and take a moment to notice whats really going on. Speaking of the Birds and the Bees, we have the knowledge now to plant with other constituents in mind: Reptiles, Birds, Insects, Rodents, Coyotes... Our choices will provide not just habitat to California Native plants but to those other organisms which happen to rely on them for survival - sometimes, only them!

Returning to that person driving their vehicle, what do they experience on their right hand side? In front of them, or to the left? How would they describe this experience to others, if they were giving a relative driving instructions? One of our challenge is to lead the person -- through.

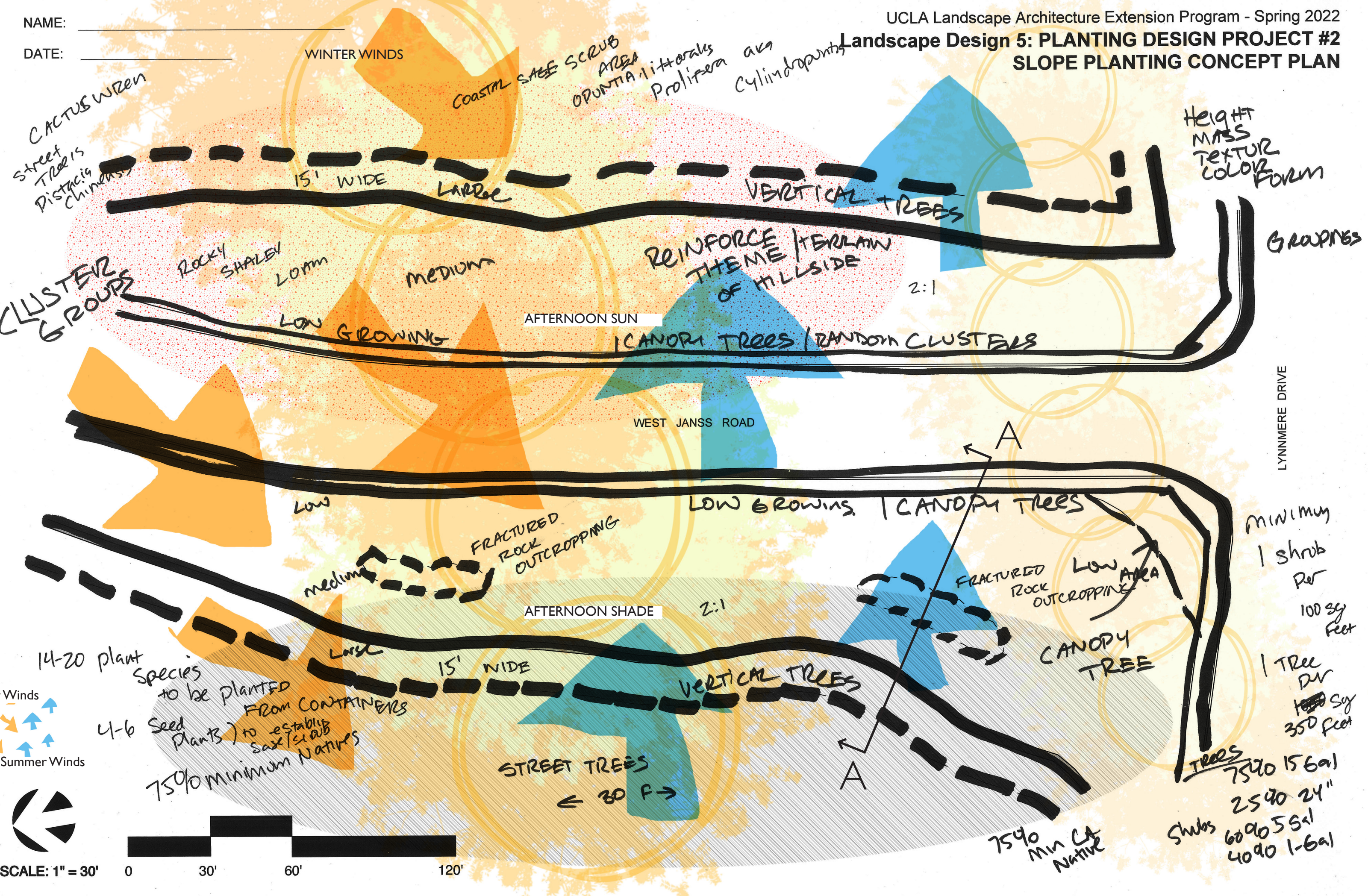
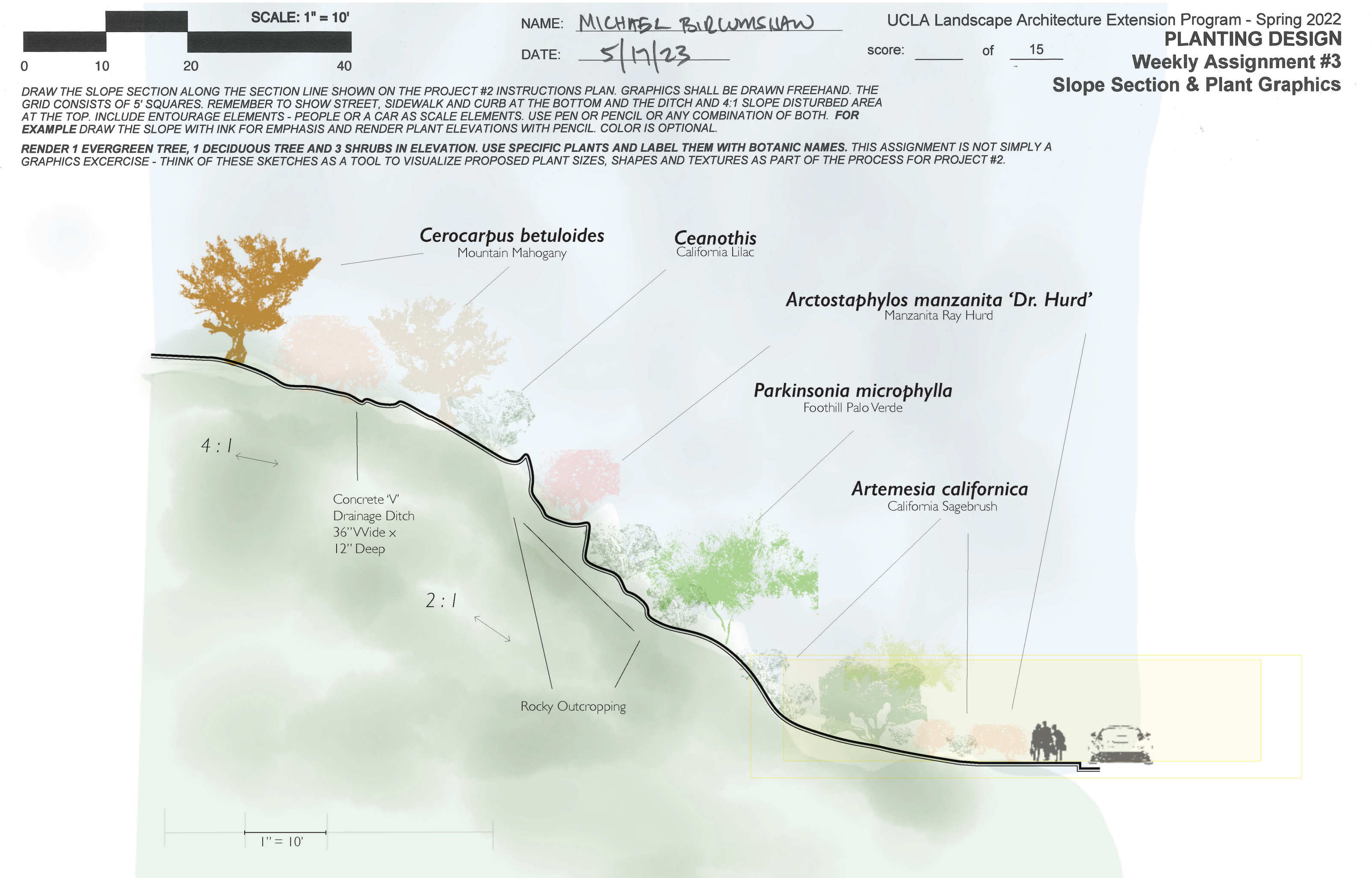
We may provide some action and momentum in the form of plants of differing shapes and sizes, colors and behaviors; perhaps planting them with a slight 'pointing' suggestion in their placement. The selection of bold plant companions promotes active visual participation from drivers and a stronger sense of ownership...of the familiar, to them.

All of our plants must be adapted to natural water conditions, with only minimal supplemental watering during establishment periods. The idea here is to plant what would be able to grow here without need for human intervention. Some plants, though they may live successfully nearby, may special consideration based on unique sun and shade at the site.



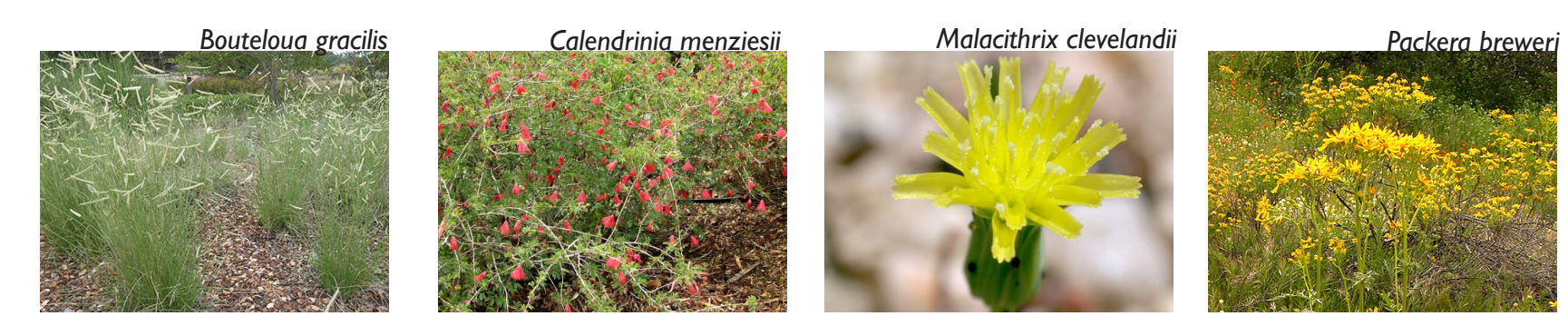
## EXISTING VEGETATION

The Cactus Wren is emblematic of the urgency for habitat conservation - as a species it requires specific plants for it's breeding cycle and these plants are in steep decline due to urbanization. Our site is situated in the Cactus Wren's natural habitat so it's essential to maintain - if not improve - this important breeding ground. In addition to the existing *Opuntia prolifera* and *Opuntia littorales*, the Cactus Wren is known to build nests in the *Parkinsonia Florida*, which we will be planting.

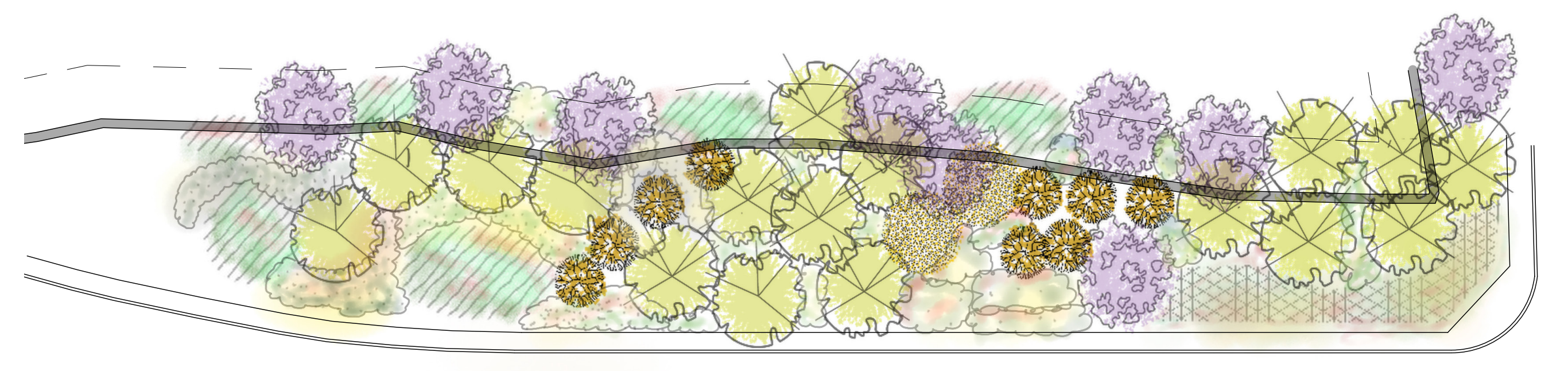
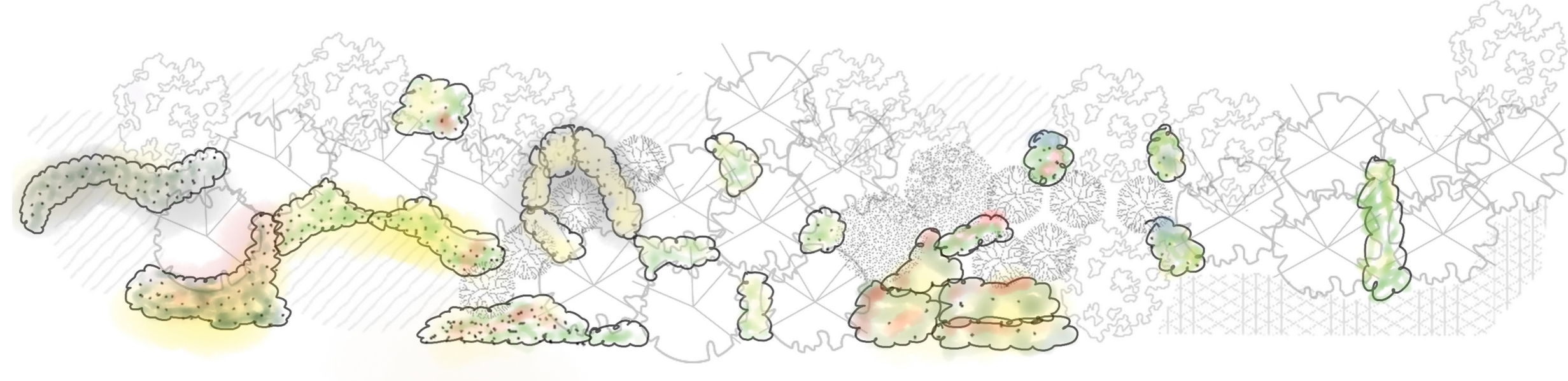
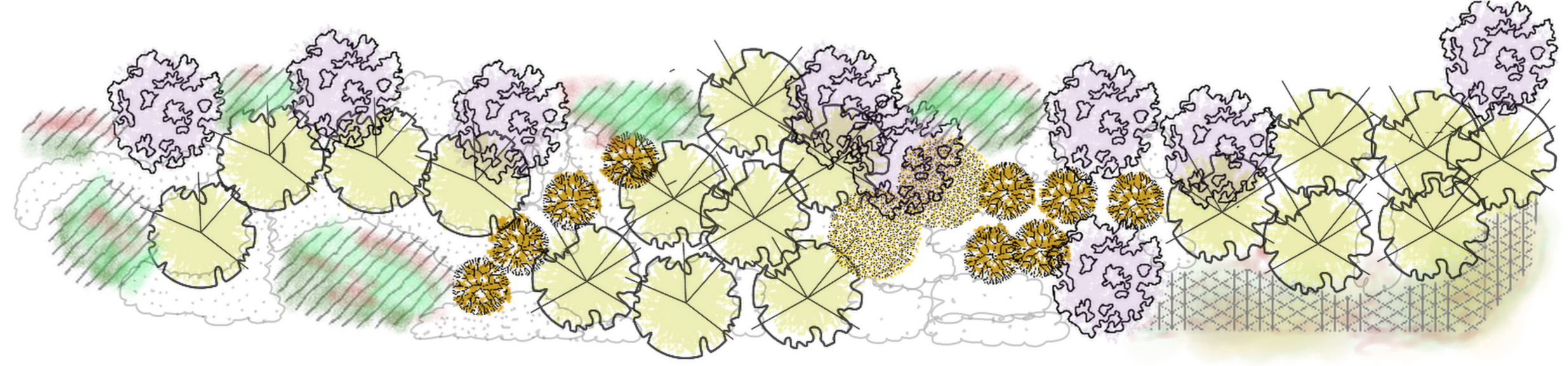
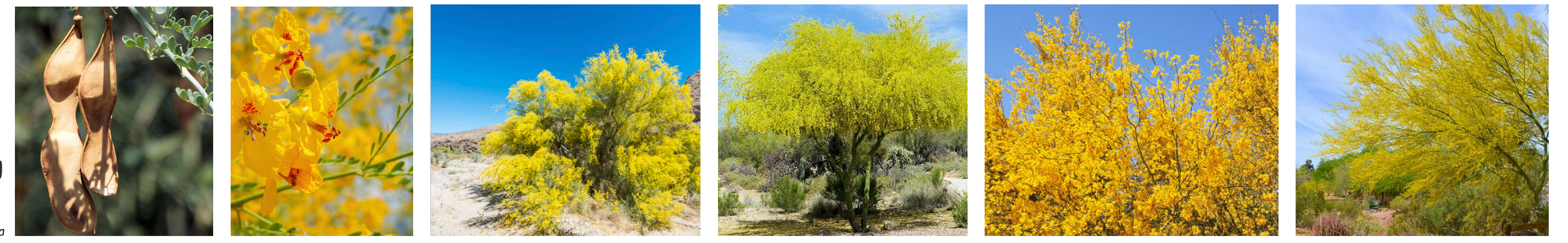
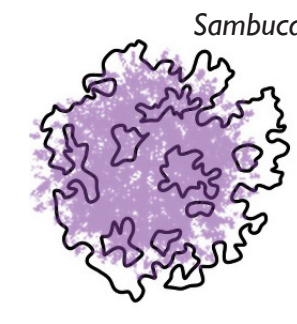
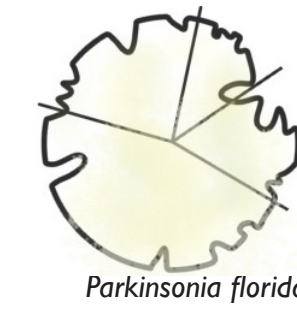


CA Native	Latin Name	Common Name	Group	Family Name	Mature Height	Mature Spread	Bloom Color	Bloom Season	WUCOLS PF
x	Arctostaphylos glandulosa	Eastwood Manzanita	Tall Shrub /Tree	Ericaceae	12	8	Pink   White	Winter   Spring	Very Low
x	Arctostaphylos parryana	Parry Manzanita	Shrubs Medium Height	Ericaceae	6	9	Pink   White	Winter   Spring	Very Low
x	Artemisia arborescens	Large Wormwood	Shrubs Medium Height	Asteraceae	6	6	Dull yellow	Spring	Low
x	Artemisia californica	California Sagebrush	Shrub or Groundcover	Asteraceae	3	1	Cream   White   Yellow	Spring   Summer   Fall	Very Low
x	Baccharis brachyphylla	Shortleaf Baccharis	Shrub or Groundcover	Asteraceae	3	2	White   Cream	Spring	Low
x	Bahiopsis laciniata	San Diego County Vigueria	Shrub or Groundcover	Asteraceae	3	3	Yellow	Winter   Spring   Summer	Very Low
x	Ceanothus 'Snow Flurry'	California Lilac	Tall Shrub /Tree	Rhamnaceae	10	10	White	Spring	Low
x	Ceanothus thyrsiflorus	Blueblossom	Shrub or Groundcover	Rhamnaceae	3	5	Blue	Spring	Low
x	Cercarpus Betuloides	Mountain Mahogany	Tall Shrub /Tree	Rosaceae	20	12	Cream   White	Winter   Spring	Very Low
x	Encelia Farnosa	Brittlebush	Shrubs Medium Height	Asteraceae	5	4	Yellow	Winter   Spring	Low
x	Fremontodendron 'California Glory'	California Flannel Bush	Tall Shrub /Tree	Malvaceae	20	15	Golden Yellow   Orange	Late Winter   Spring	Low
z	Parkinsonia florida	Blue Palo Verde	Tall Shrub /Tree	Fabaceae	26	20	Yellow	Spring	Very Low
x	Pensemon spectabilis	Showy Penstemon	Shrub or Groundcover	Plantaginaceae	4	4	Blue   Pink   Purple	Winter   Spring	Very Low
x	Ribes indecorum	White Flowering Currant	Shrubs Medium Height	Grossulariaceae	5	1	White   Pink	Winter	Very Low
x	Sambucus mexicana	Blue Elderberry	Tall Shrub /Tree	Adoxaceae	30	30	Cream   Yellow   Purple	Spring   Summer	Low
x	Solidago californica	California Goldenrod	Shrub or Groundcover	Asteraceae	3	10	Yellow	Summer   Fall	Low
x	Aristida purpurea	Purple Three Awn	Shrub or Groundcover	Poaceae	3.3	2	Purple   Cream   Red   Brown	Winter   Spring	Very Low
x	Baccharis pilularis 'Chabilis'	Coyote Bush	Shrubs Medium Height	Asteraceae	7	7	Cream   White	Spring   Summer	Very Low
x	Opuntia littorales	Coastal Prickly Pear	Shrub or Groundcover	Cactaceae	3.3	9	Yellow   Purple   Red	Spring	Very Low
x	Opuntia prolifera	Coastal Cholla	Shrubs Medium Height	Cactaceae	10	5	Purple   Red	Spring   Summer	Very Low
x	Romneya Coulteri	Coulter's Matilija Poppy	Shrubs Low Height and Groundcover	Papaveraceae	10	20	White   Yellow	Spring   Summer	Low
x	Artemisia californica	California Sagebrush	Shrubs Low Height and Groundcover	Asteraceae	3	1	Cream   White   Yellow	Spring   Summer   Fall	Very Low
	Bouteloua gracilis	Blue Grama	Shrub or Groundcover	Poaceae	2	2	Yellow	Summer	Very Low
	Calandrinia menziesii	Red Maids	Shrub or Groundcover	Montiaceae	1	1	Red	Spring   Summer	Very Low
x	Chaenactis artemesifolia	White Pincusion	Shrub or Groundcover	Asteraceae	1	1	White   Pink	Spring	Very Low
x	Elymus condensatus	Giant Wild Rye	Shrubs or Groundcover Medium Height	Poaceae	6	8	Brown	Spring   Summer	Very Low
	Malacothrix clevelandii	Cleveland's Desertdandelion	Shrub or Groundcover	Asteraceae	1	1	Yellow	Spring	Low
x	Malacothrix saxatilis var commutata	Cliff desertdandelion	Shrub or Groundcover	Asteraceae	1	1	White   Yellow	Spring   Summer   Fall	Very Low
	Packera breweri	Groundsel	Shrub or Groundcover	Asteraceae	4	2	Yellow	Spring	Low
	Sphaeralcea ambigua	Desert Globemallow	Shrubs or Groundcover Medium Height	Malvaceae	4	4	Orange   Lavendar   Red   Pink	Winter   Spring	Very Low

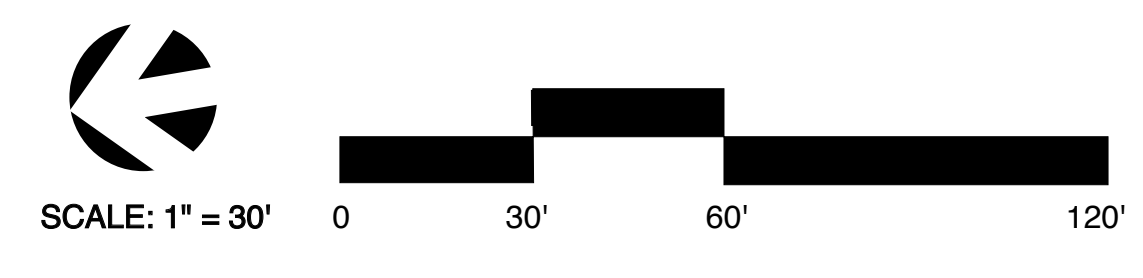
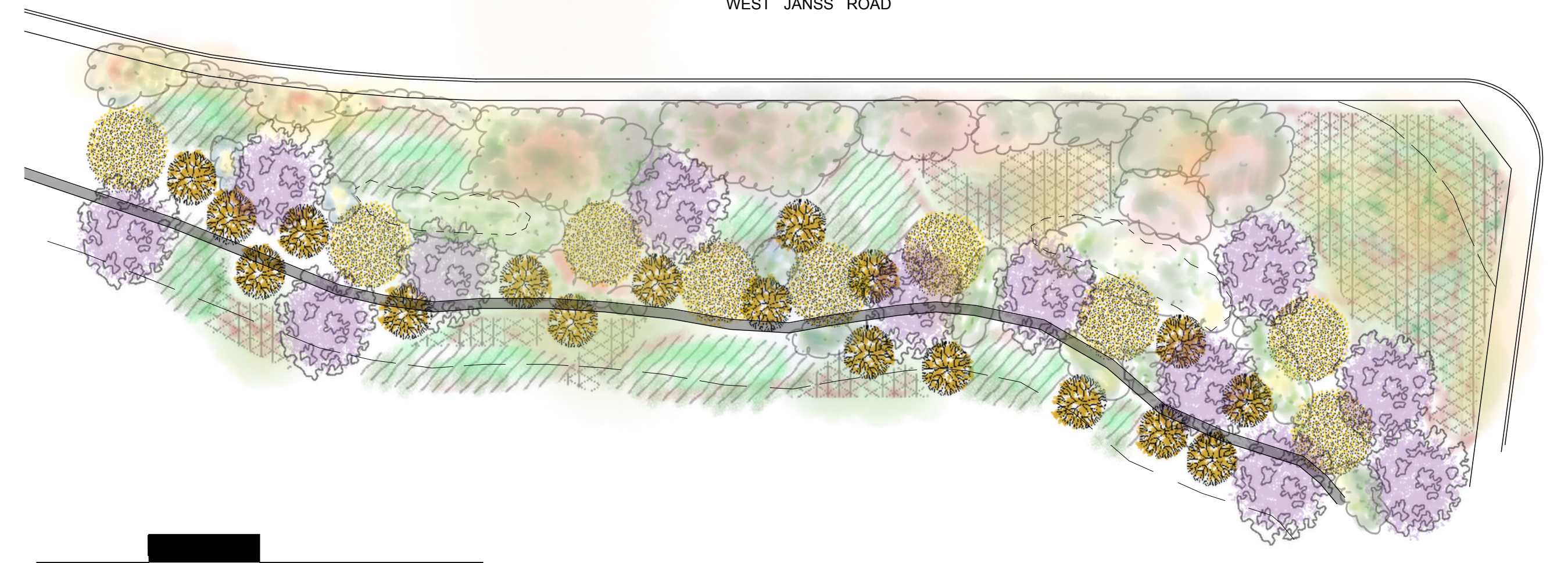
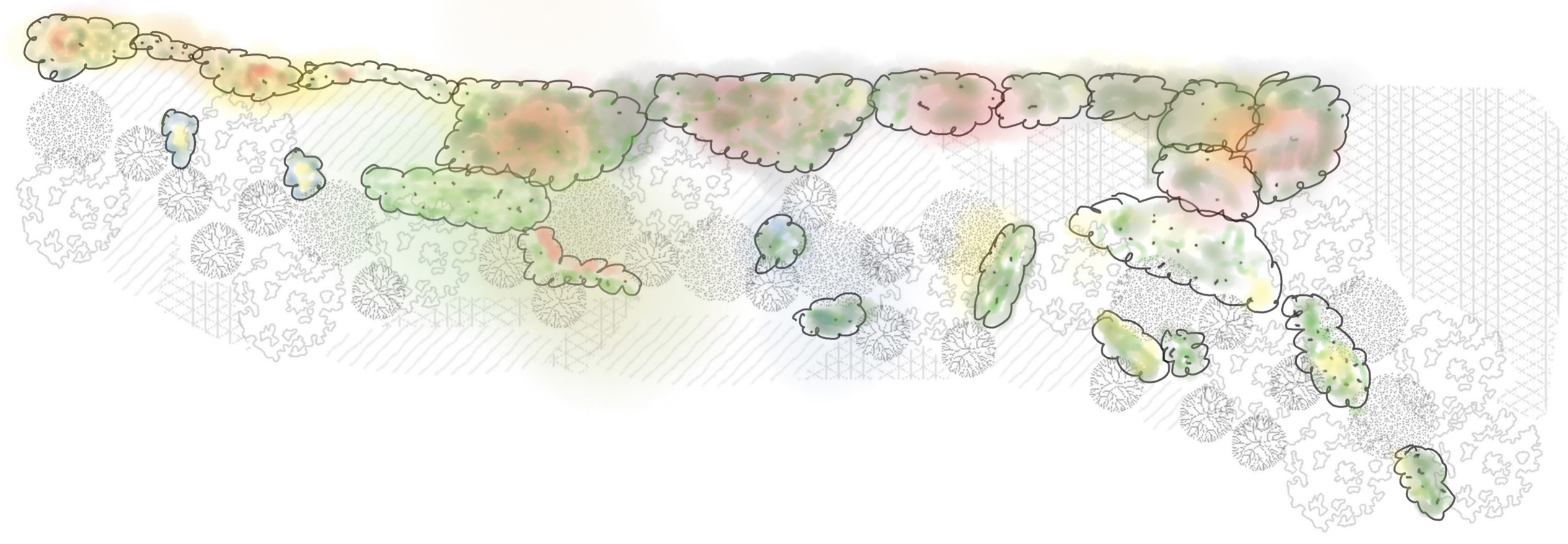
## ALTERNATE HYDROSEED



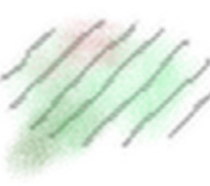
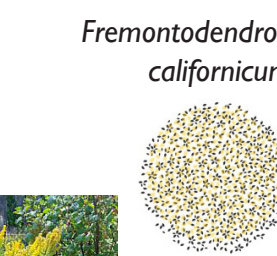
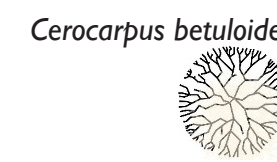
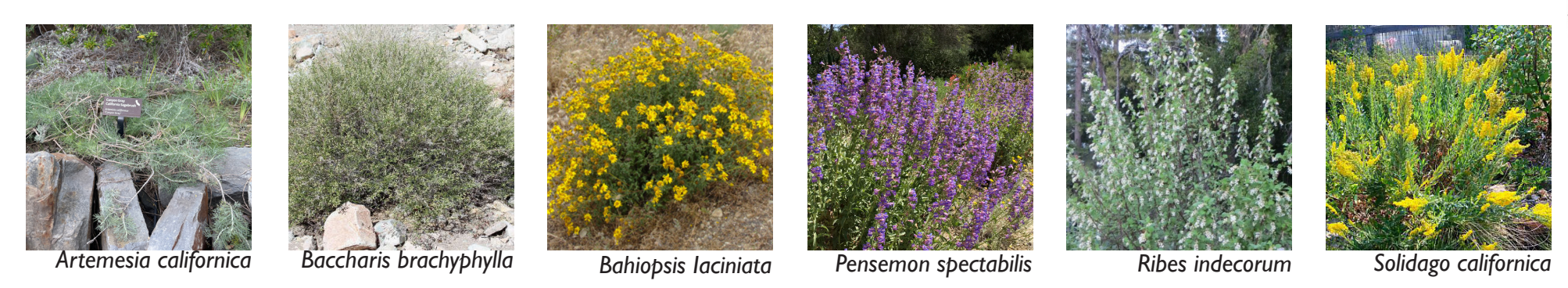
# TREES & HYDROSEED



# SHRUBS



# TREES & GROUND COVER



LYNNMERE DRIVE

WEST JANSS ROAD