

RESIDENTIAL SITE DESIGN

WEST L.A. HOME

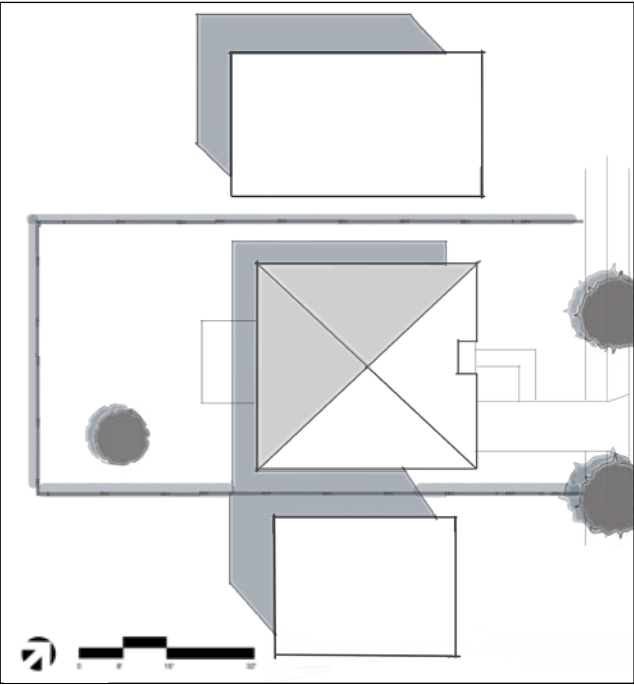
Mackenzie Doyle

LD5: Planting Design | UCLA | Spring 2023

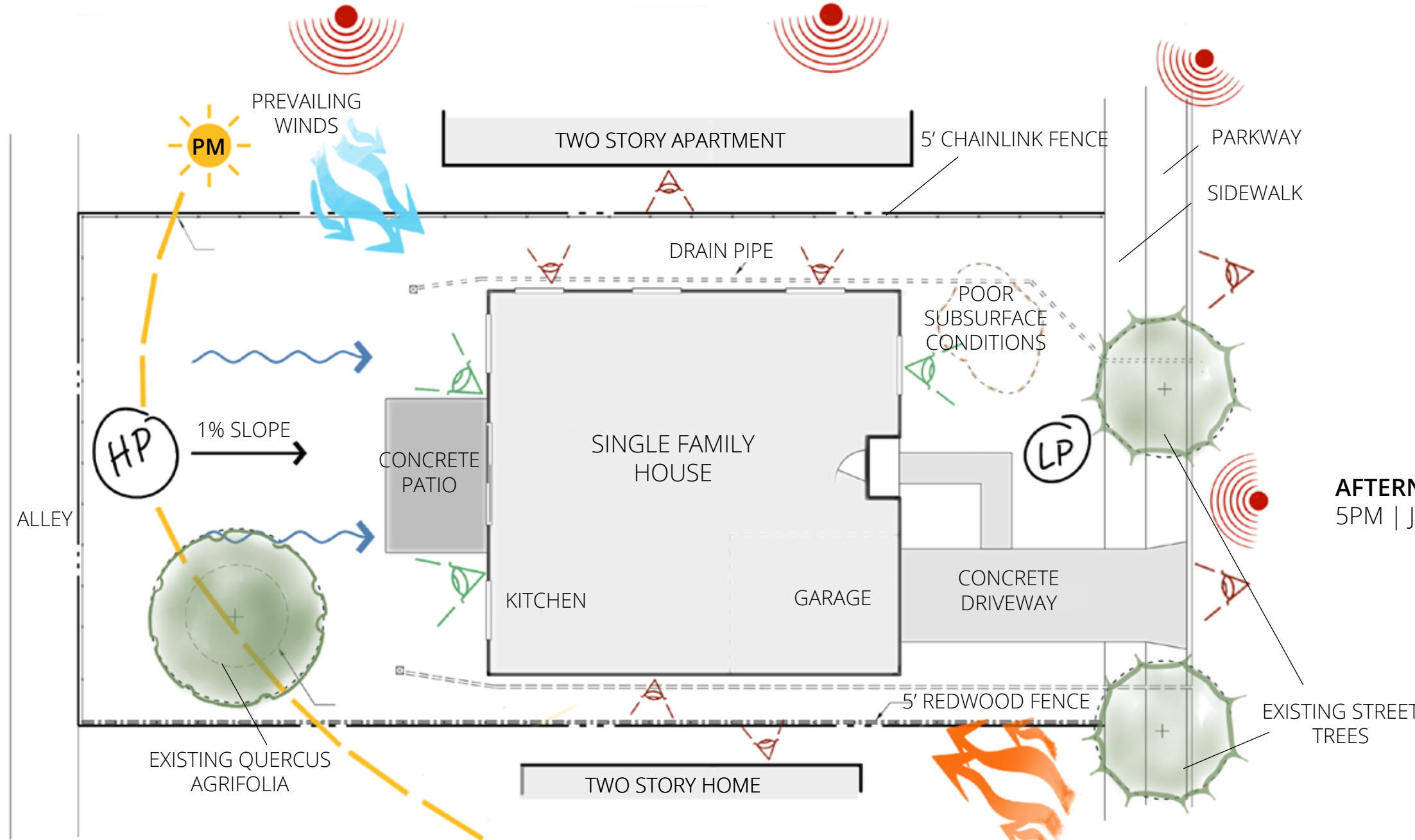
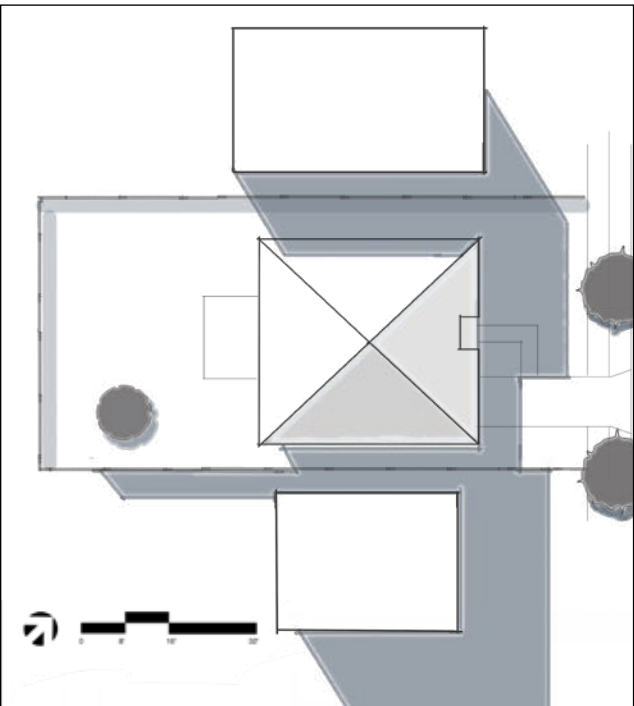
Instructor: Pamela Brief

SITE ANALYSIS

MORNING SHADE 9AM | JUNE 21st



AFTERNOON SHADE 5PM | JUNE 21st

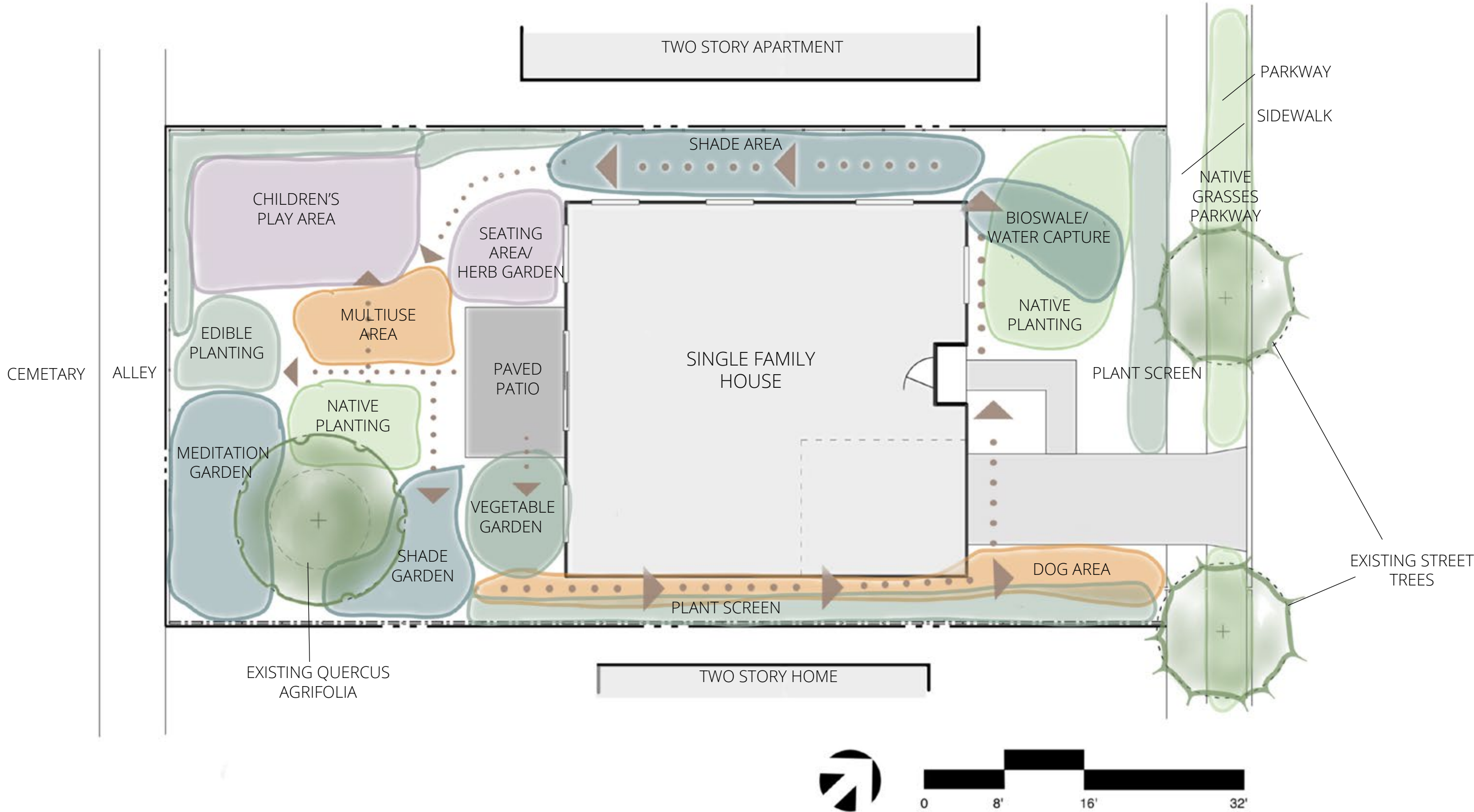


MAP LEGEND

- FAVORABLE VIEW POINTS
- UNFAVORABLE VIEW POINTS or VIEWS INTO SPACE
- NOISE
- WATER FLOW DIRECTION



BUBBLE DIAGRAM: SITE PROGRAMMING



PRECEDENT IMAGES + DESIGN NARRATIVE

Design Narrative: Meditative Meadow

This design features a palette of predominantly native plants, with a wild native meadow experience balanced by meditative, relaxing shade spaces. The planting concept offers a loose and wild feel, contrasted by more organized and intimate gathering spaces.

The entirety of this design features an interactive and exploratory experience for the residents, especially the child. The kid's play area features natural play structures, sensory plants, and an edible garden. For the adults, there is an oak garden walk, meditation garden, and yoga deck. Overall, this design aims to provide a rich and relaxing respite in the heart of bustling Santa Monica.

Given the amount of programming required, I didn't want the space to feel entirely like structured programming. I aimed to tie the programming in to natural-feeling and passive spaces. The color palette includes calming cool greens and blues, accented with pops of pink, red, and purple.



BIOSWALE +
NATIVE PLANT
GARDEN



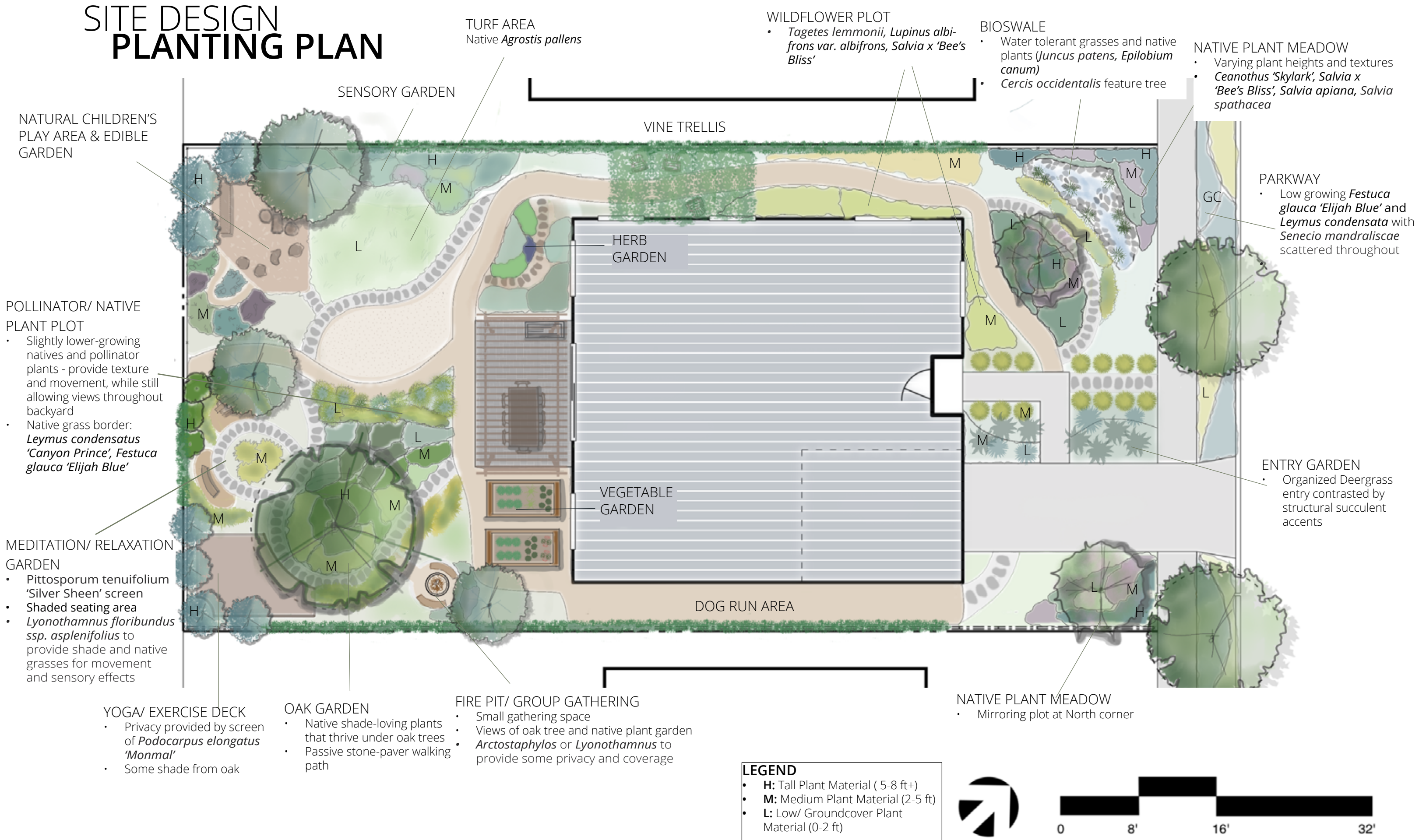
NATIVE
PLANT
MEADOW



OAK GARDEN +
YOGA/ HEALING
GARDEN



SITE DESIGN PLANTING PLAN



PLANT PALETTE

TREES + TALL SHRUBS

* California Natives are noted with purple outline



Arctostaphylos densiflora 'Howard McMinn'
Howard McMinn Manzanita



Cercis occidentalis
Western Redbud



Lyonothamnus floribundus ssp. asplenifolius
Santa Cruz Island Ironwood

MEDIUM SHRUBS



Ceanothus 'Skylark'
Skylark Mountain Lilac



Salvia apiana
White Sage



Agave attenuata 'Blue Boutin'
Fox Tail Agave 'Blue Boutin'



Tagetes lemmonii
Mexican Marigold



Lupinus albifrons var. *albifrons*
Silver Lupine

LOW / GROUND COVER



Senecio mandraliscae
Blue Chalksticks



Salvia x 'Bee's Bliss'
Bee's Bliss Sage



Epilobium canum
California Fuchsia



Salvia spathacea
Hummingbird Sage



Heuchera maxima
Island alum root



Polypodium californicum
California Polypody

PLANT PALETTE

SCREEN: VINES + TALL SHRUBS



Calystegia macrostegia
Island Morning Glory



Trachelospermum jasminoides
Star Jasmine



Pittosporum tenuifolium 'Silver Sheen'
Silver Sheen Kohuhu



Podocarpus elongatus 'Monmal'
Blue Ice Yellowwood

GRASSES



Juncus patens
Common Rush



Festuca glauca 'Elijah Blue'
Elijah Blue Fescue



Muhlenbergia rigens
Deergrass



Agrostis pallens
Thingrass



Leymus condensatus 'Canyon Prince'
Canyon Prince Wild Rye

HERBS + EDIBLES



Achillea millefolium
Common Yarrow



Rosmarinus officinalis
Rosemary



Lavandula angustifolia
English Lavender



Berberis aquifolium
Oregon Grape



Fragaria chiloensis
Beach Strawberry

PLANT SPECIFICATIONS

Botanical Name + Family	Common Name	Height/ Spread	WUCOLS Water Usage	Summer Water Reduction & Irrigation	Soil Requirements	Bloom Color & Season	Planting Areas on Site
T R E E S							
<i>Arctostaphylos densiflora</i> 'Howard McMinn' Arctostaphylaceae	Howard McMinn Manzanita	8-10 feet tall 8-10 feet wide	Low 10-30% ETO	--	Tolerates a wide variety of soils.	White, Pink Winter/ Spring	Native Plant Meadow, Shade Garden
<i>Cercis occidentalis</i> Caesalpiniaceae	Western Redbud	10 - 20 ft tall 10 - 15 ft wide	Low 10-30% ETO	SWR (max 1x/ month)	Adaptable	Pink, Red Winter/ Spring	Native Plant Meadow, Bioswale
<i>Lyonothamnus floribundus</i> ssp. <i>aspleniifolius</i> Rosaceae	Santa Cruz Island Ironwood	25 - 50 ft tall 12 - 24 ft wide	Very Low < 10% ETO	SWR (max 1x/ month)	Tolerates a variety of soils	Cream, White Spring/ Summe	Meditation Garden, Shade Garden
M E D I U M S H R U B S							
<i>Ceanothus</i> 'Skylark' Asteraceae	Skylark Mountain Lilac	3 - 4 ft tall 4 - 6 ft wide	Low 10-30% ETO	Max 1x / month	Sandy, fast draining	Blue Spring/ Fall/ Winter	Native Plant Meadow, Oak Garden
<i>Salvia apiana</i> Lamiaceae	White Sage	3-5 feet tall 3-8 feet wide	Very Low < 10% ETO	SWR (max 1x/ month)	Adaptable (Med-Fast Draining)	White Winter, Summer	Native Plant Meadow, Herb Garden, Sensory Garden
<i>Agave attenuata</i> 'Boutin Blue' Agavaceae	Blue Foxtail Agave	4-5 feet tall 5-10 inches wide	Low 10-30% ETO	SWR	Well Drained	Yellow-Green	Entry way, Parkway, Meditation Garden
<i>Tagetes lemmonii</i> Asteraceae	Mexican Marigold	4 - 6 ft tall 6 - 8 ft wide	Low 10-30% ETO	SWR	Well drained	Golden Fall, Winter	Wildflower Plot, Sensory Garden
<i>Lupinus albifrons</i> var. <i>collinus</i> Fabaceae	Silver Bush Lupine	3 - 5 ft tall 2 ft wide	Low 10-30% ETO	SWR (Irrigate max 1x/ week)	Fast Draining	Blue, Lavender, Pink Spring, Summer	Wildflower Plot
L O W / G R O U N D C O V E R							
<i>Senecio serpens</i> Asteraceae	Blue Chalksticks	<1 foot tall 2-3 feet wide	Low 10-30% ETO	SWR	Well Drained	White Summer, Fall	Entry way, Parkway, Meditation Garden
<i>Salvia</i> x 'Bee's Bliss' Lamiaceae	Bee's Bliss Sage	2 ft tall 6 - 8 ft wide	Very Low < 10% ETO	SWR (max 1x/ month)	Adaptable	Lavender Spring	Native Plant Meadow, Herb Garden
<i>Epilobium canum</i> Onagraceae	California Fuchsia	0.25 - 1.5 ft tall 2-3 ft wide	Very Low to Low 10-30% ETO	SWR (max 1x/ month)	Tolerates clay & sand.	Red Summer, Fall	Native Plant Meadow, Wildflower Plot
<i>Salvia spathacea</i> Lamiaceae	Hummingbird Sage	1 - 3 ft tall 3 ft wide	Low 10-30% ETO	SWR (max 1x/ month)	Tolerates a variety of soils	Pink, Red Winter - Summer	Oak Garden
<i>Heuchera maxima</i> Saxifragaceae	Island Alum Root	1 - 2 ft tall 2 ft wide	Low 10-30% ETO	SWR (max 3x/ month)	Prefers sandy/ rocky soil with good drainage.	Pink, White Winter/ Spring	Oak Garden
<i>Polypodium californicum</i> Polypodiaceae	California Polybody	1.5 ft tall 3 ft wide	Low-High (tolerates wet)	SWR (Irrigate max 1x/ week)	Slow-Medium Draining	N/A	Bioswale

PLANT SPECIFICATIONS

Botanical Name + Family	Common Name	Height/ Spread	WUCOLs Water Usage	Summer Water Reduction & Irrigation	Soil Requirements	Bloom Color & Season	Planting Areas on Site
SCREENING PLANTS							
<i>Calystegia macrostegia</i> Convolvulaceae	Island Morning Glory	1 foot tall 20-30 feet wide	Very Low < 10% ETO	SWR (Max 1x / month)	Sandy and/or rocky soil. Med-fast draining.	Pink-White Winter/ Spring/ Summer	Screening
<i>Trachelospermum jasminoides</i> Apocynaceae	Star Jasmine	2 - 6 ft tall Spreading	Low - Moderate 40-60% ETO	Infrequent summer water	Well drained	White Spring, Summer	Screening, Sensory Garden
<i>Pittosporum tenuifolium</i> 'Silver Sheen' Pittosporaceae	Silver Sheen Kohuhu	12-16 ft tall 6 - 8 ft wide	Low - Moderate 40-60% ETO	N/A	Adaptable	Purple Spring	Screening, Meditation Garden
<i>Podocarpus elongatus</i> 'Monmal' Podocarpaceae	Blue Ice Yellowwood	40 - 50 ft tall	Low - Moderate 40-60% ETO	N/A	Medium Draining	N/A	Screening, Meditation Garden
GRASSES							
<i>Juncus patens</i> Juncaceae	Common Rush	1 - 3 ft tall 3 ft wide	Moderate - High 40-60% ETO+	SWR (Max 1x / month)	SWR (max 1x/ month)	Tolerates a variety of soils. Slow draining.	Bioswale
<i>Festuca glauca</i> 'Elijah Blue' Poaceae	Elijah Blue Fescue	0.5 - 1 ft tall 1 - 2 ft wide	Low 10-30% ETO	SWR	Moist, well-draining soil.	Yellow Spring/ Summer	Native Plant Meadow, Parkway
<i>Muhlenbergia rigens</i> Poaceae	Deergrass	4 - 5 ft tall 4 ft wide	Low 10-30% ETO	SWR (max 1x/ month)	Tolerant of sand and clay.	Yellow, Cream Spring	Entry way, Native Plant Meadow, Sensory Garden
<i>Agrostis pallens</i> Poaceae	Thingrass	0.33 - 2.3 ft tall	Low 10-30% ETO	SWR (max 1x/ week)	Medium Draining	Green Spring	Native Plant Meadow, Wildflower Plot, Meditation Garden
<i>Leymus condensatus</i> 'Canyon Prince' Poaceae	Canyon Prince Wild Rye	2-3 feet tall Mounding	Low 10-30% ETO	SWR	Adaptable to many soils.	Wheat Bloom Summer	Native Plant Meadow, Wildflower Plot, Meditation Garden
HERBS + EDIBLES							
<i>Achillea millefolium</i> Asteraceae	Common Yarrow	1 - 3 ft tall 0.5 - 1.5 ft wide	Low 10-30% ETO	SWR	Any soil type, except wet	White, Yellow Spring/ Summer	Oak Garden, Herb Garden
<i>Rosmarinus officinalis</i> Rosmarinus	Rosemary	2 - 6 feet tall 2 - 5 feet wide	Low 10-30% ETO	SWR	Prefers well drained.	Pale Purple - White Spring, Summer	Herb Garden
<i>Lavandula angustifolia</i> Lamiaceae	English Lavender	2 - 3 ft tall 4 - 5 ft wide	Low 10-30% ETO	SWR	Sandy, well drained	Light Lavender Year-Round	Herb Garden, Meditation Garden
<i>Berberis aquifolium</i> Berberidaceae	Oregon Grape	3.5 - 7 ft tall 6 ft wide	Low 10-30% ETO	SWR	Well Drained	Yellow Spring, Summer	Edible Garden
<i>Fragaria chiloensis</i> Rosaceae	Beach Strawberry	1 - 4 in tall 2 - 3 ft wide	Low 10-30% ETO	SWR (Max 1x / month)	Fast Draining	White Spring, Summer, Winter	Edible Garden