



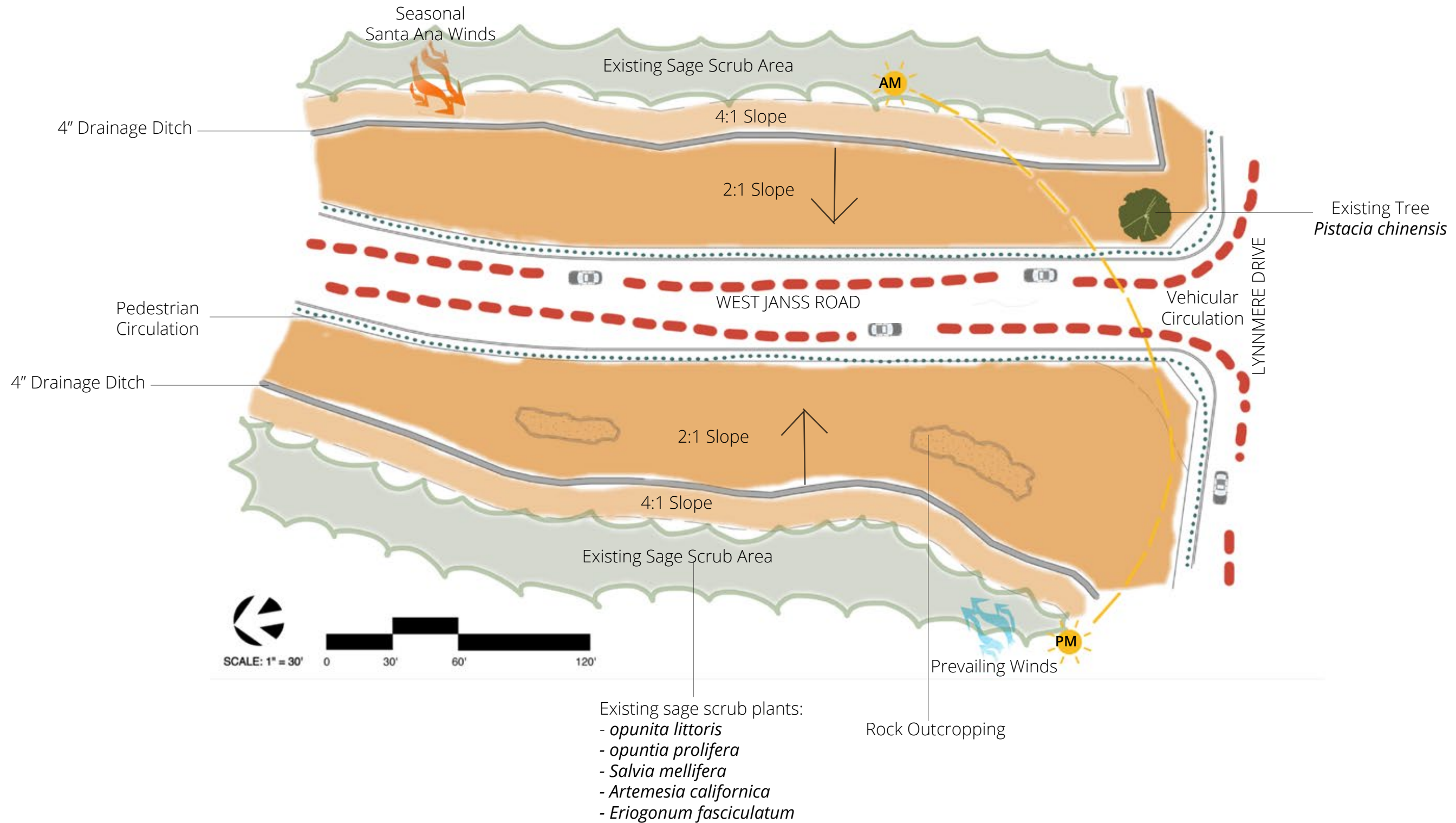
SLOPE RESTORATION
SITE DESIGN
THOUSAND OAKS, CA

Mackenzie Doyle

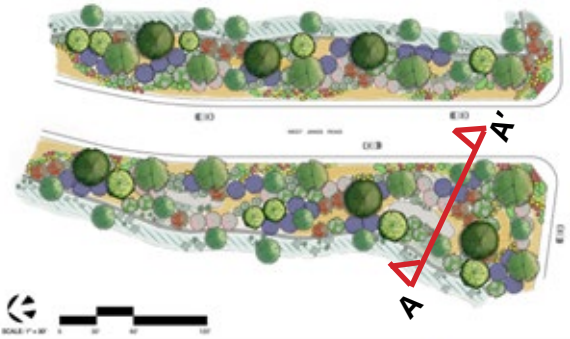
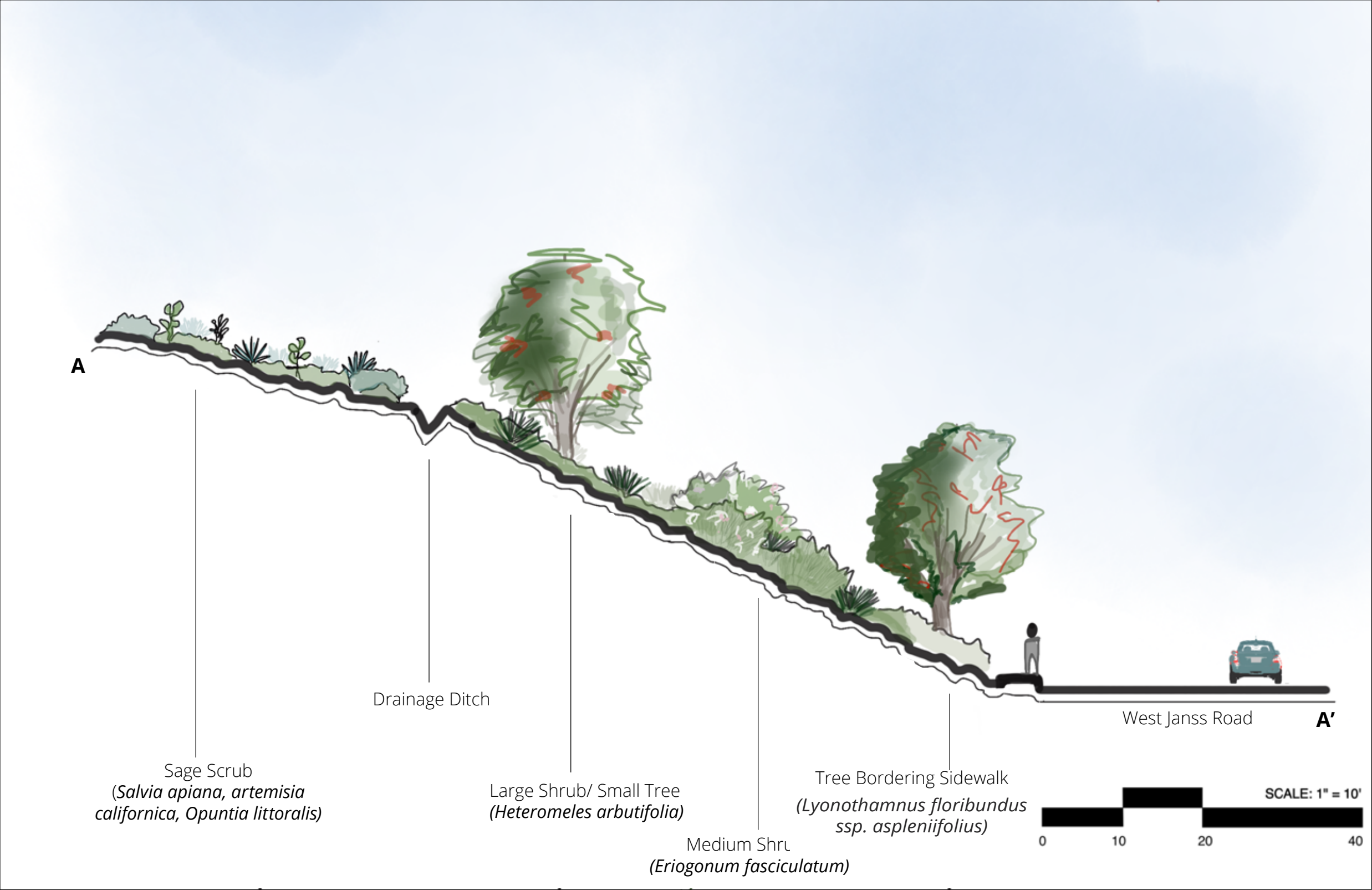
LD5: Planting Design | UCLA | Spring 2023

Instructor: Pamela Brief

SITE ANALYSIS



CONCEPTUAL SECTION LINE



DESIGN NARRATIVE

Design Narrative

The slopes lining either side of West Janss Road in Thousand Oaks, CA are in desperate need of stabilization and erosion control. The natural sage scrub zone located at the top of the slope has been disturbed by heavy construction and stripped bare of all plant material.

The goal of this project is to restore the sage scrub area, stabilize the slope, offer a habitat for wildlife and pollinators, and create an attractive landscape for the community and passersby.

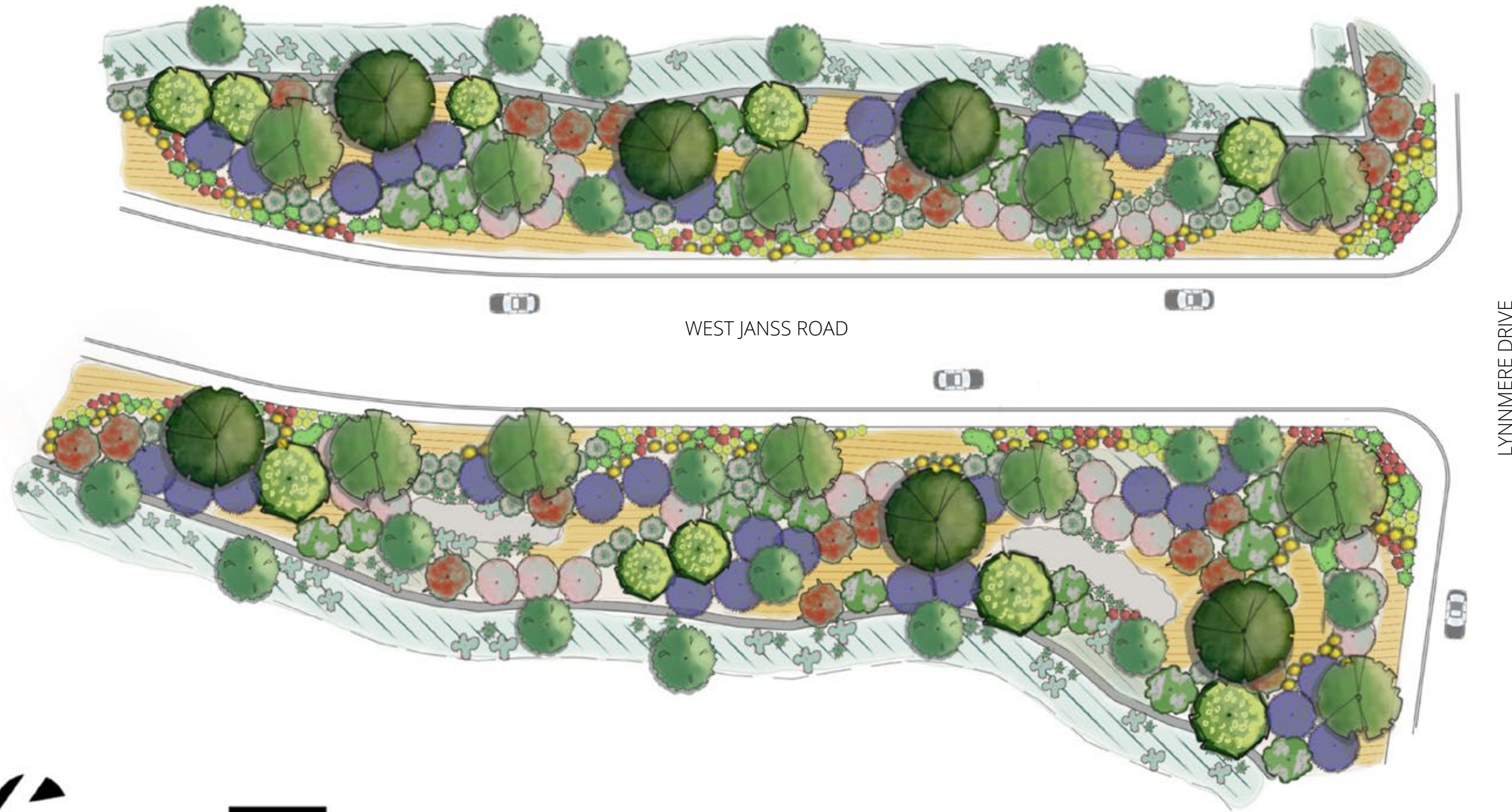
My design intent is to highlight the beauty and diversity of California's native plants and create a natural, non-manicured landscape. Two hydroseed mixes are utilized in this design: a sage scrub mix and a meadow mix. The hydroseeds are used to ensure successful planting on areas of steep slope, increase slope stabilization, cover slope area under trees, and offer a diverse mix of plants with seasonal interest.

The plant palette features a majority of evergreen shrubs with year-round flowering interest. Lining the sidewalks and roadways are lower growing and ground cover plantings, as well as staggered trees to provide a buffer and shade coverage. The plant material gradually increases in height as the slope ascends. Swaths of color and height variation weave throughout, creating movement, texture, and a natural, painterly feel. Hydroseed zones weave throughout larger shrub plantings, as well, to offer variation and ensure density, especially under trees.

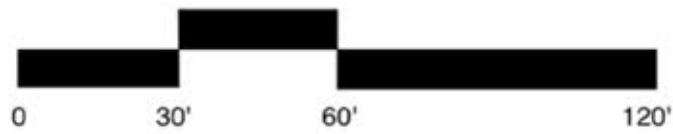
Plants have been grouped with companion plants as much as possible. Additionally, due to terpenes that the *Umbellularia californica* releases, I have selected plants that are known to grow in that understory environment: *Ceanothus* and *Arctostaphylos*.



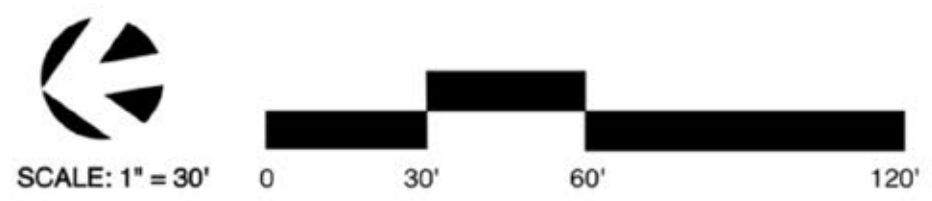
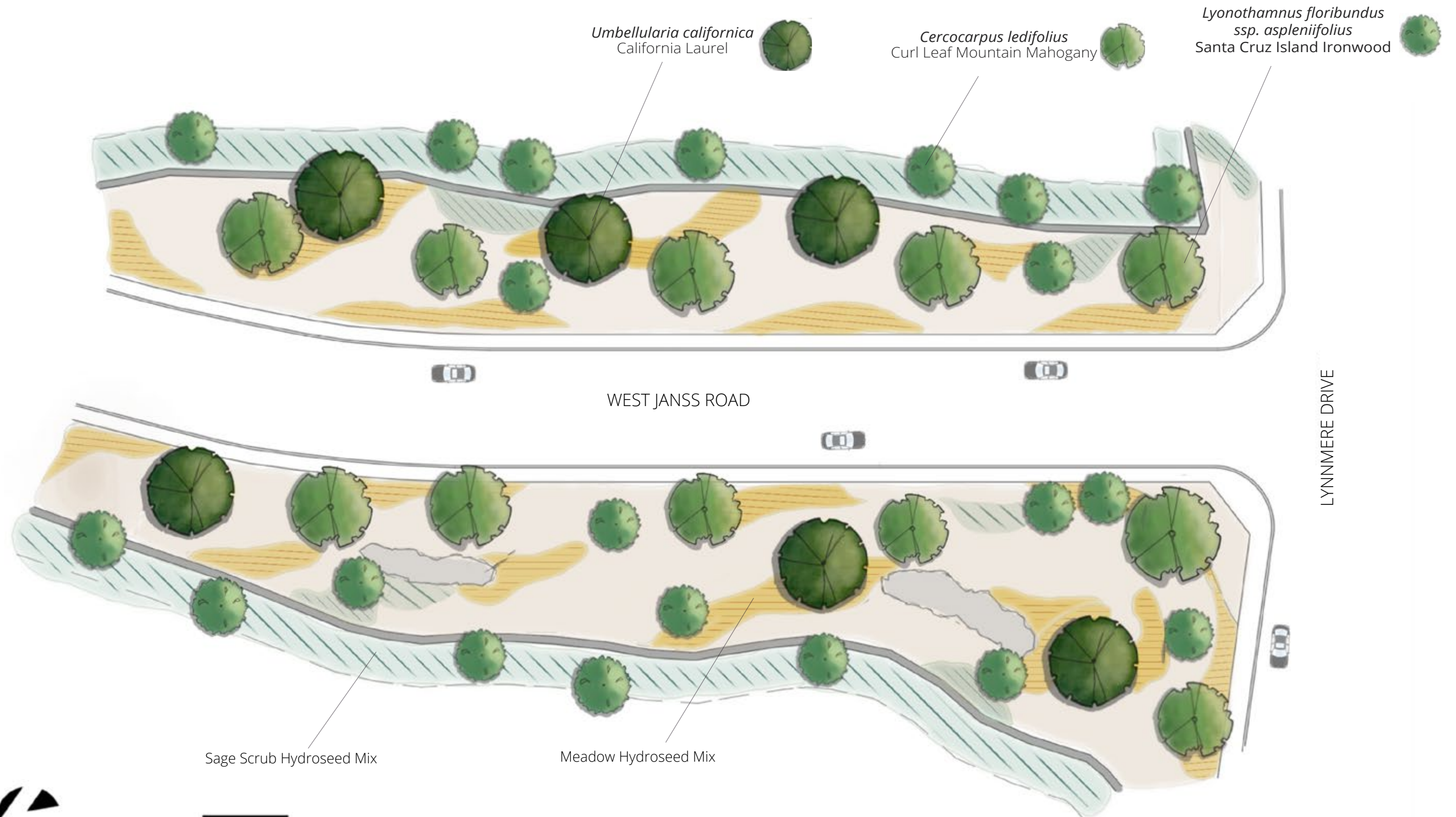
OVERALL PLANTING PLAN



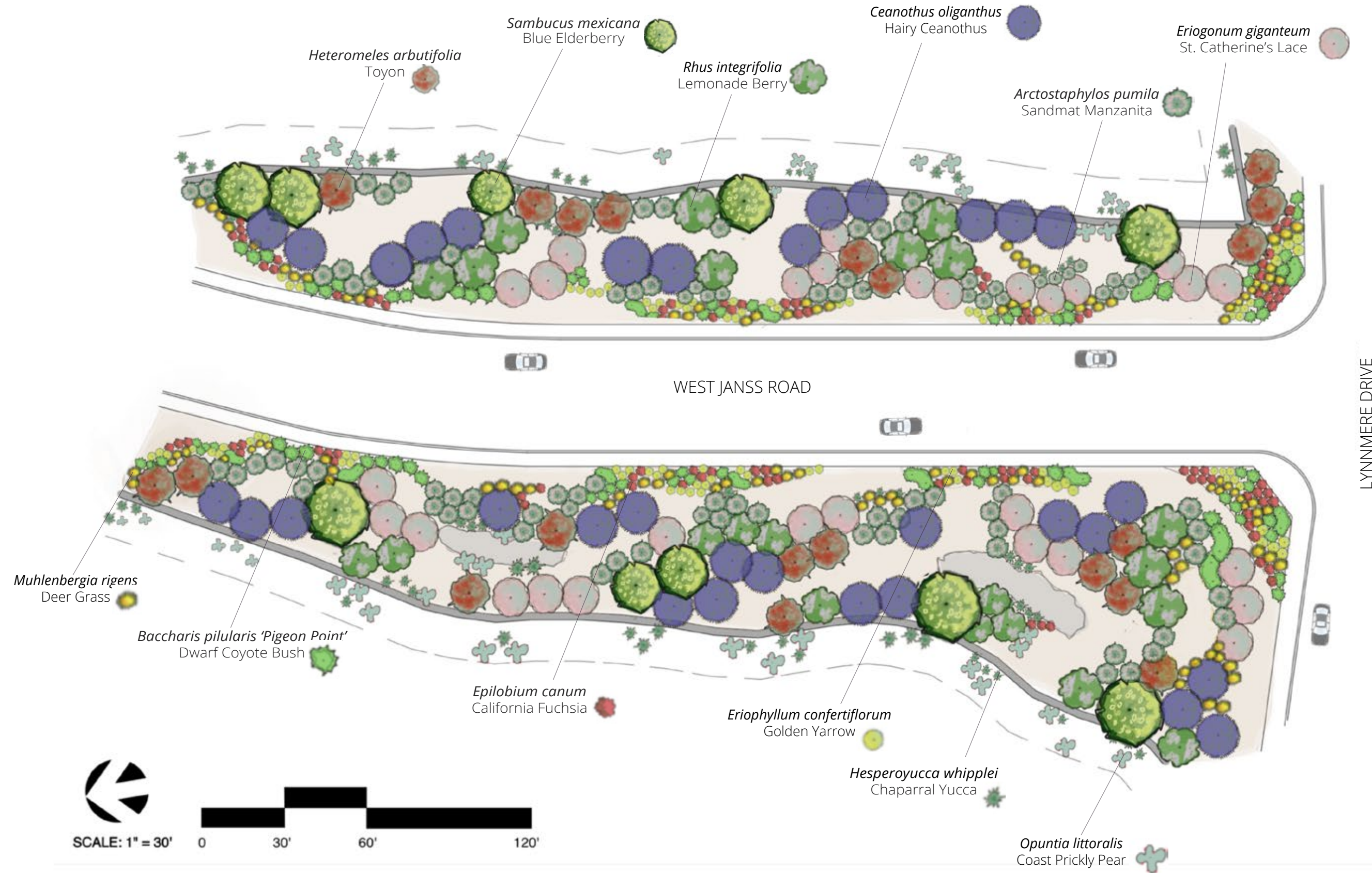
SCALE: 1" = 30'



TREE + HYDROSEED PLANTING PLAN



SHRUB PLANTING PLAN



PLANT PALETTE

TREES



Lyonothamnus floribundus
ssp. aspleniifolius
Santa Cruz Island Ironwood



25-50 ft tall
12-24 ft wide
WUCOLS: Very Low
Origin: California



Umbellularia californica
California Laurel



6 - 80 ft tall
3 - 30 ft wide
WUCOLS: Low
Origin: California



Cercocarpus ledifolius
Curl Leaf Mountain Mahogany



6.6 - 32.8 ft tall
5 - 10 ft wide
WUCOLS: Very Low
Origin: California

MEDIUM - LARGE SHRUBS



Rhus integrifolia
Lemonade Berry



3 - 30 ft tall
3 - 20 ft wide
WUCOLS: Extremely - Very Low
Origin: California



Sambucus mexicana
Blue Elderberry



20 - 30 ft tall
20 - 30 ft wide
WUCOLS: Low
Origin: California



Heteromeles arbutifolia
Toyon



6 - 30 ft tall
10 - 15 ft wide
WUCOLS: Extremely - Very Low
Origin: California



Arctostaphylos pumila
Sandmat Manzanita



1.5 - 5 ft tall
5 ft wide
WUCOLS: Very Low
Origin: California



Eriogonum giganteum
St. Catherine's Lace



1.6 - 5 ft tall
4 - 10 ft wide
WUCOLS: Very Low
Origin: California



Ceanothus oliganthus
Hairy Ceanothus



10 ft tall
12 ft wide
WUCOLS: Very Low
Origin: California

PLANT PALETTE

SMALL SHRUBS + GROUND COVER



Muhlenbergia rigens
Deer Grass

Height: 4'-5'
Spread: 4'
WUCOLS: Very Low
Origin: California



Hesperoyucca whipplei
Chaparral Yucca

2 - 12 ft tall
2 - 3 ft wide
WUCOLS: Extremely - Very Low
Origin: California



Epilobium canum
California Fuchsia

0.25 - 1.5 ft tall
2-3 ft wide
WUCOLS: Extremely - Very Low
Origin: California



Baccharis pilularis 'Pigeon Point'
Dwarf Coyote Bush

1 -2 ft tall
8 ft wide
WUCOLS: Low
Origin: California



Eriophyllum confertiflorum
Golden Yarrow

1.6 - 2.3 ft tall
1.5 ft wide
WUCOLS: Very Low
Origin: California



Opuntia littoralis
Coast Prickly Pear

3 ft tall
Varied Width
WUCOLS: Very Low
Origin: California



PHOTO CREDIT:

All photos courtesy of Calscape, California Flora Nursery, and Las Pilitas Nursery

PLANT PALETTE: HYDROSEED

Hydroseed Mix: California Native Coastal Sage Scrub



Stipa pulchra
Purple Needlegrass
25%
3.3 ft tall
1.5 ft wide
WUCOLS: Very Low-Low



Eriogonum fasciculatum
California Buckwheat
20%
1 - 6.6 ft tall
3 ft wide
WUCOLS: Extremely - Very Low



Salvia apiana
White Sage
15%
3 - 5 ft tall
3 - 8 ft wide
WUCOLS: Extremely - Very Low



Artemisia californica
California Sagebrush
20%
1 - 8 ft tall
4 ft wide
WUCOLS: Extremely - Very Low



Lupinus succulentus
Arroyo Lupine
10%
2 - 4 ft tall
3 ft wide
WUCOLS: Low



Salvia mellifera
Black Sage
10%
3 - 6 ft tall
3 - 10 ft wide
WUCOLS: Extremely - Very Low

Hydroseed Mix: California Native Meadow



Elymus condensatus
Giant Wildrye
25%
3 - 6 ft tall
2 - 8 ft wide
WUCOLS: Very Low



Eschscholzia californica
California Poppy
15%
0.16 - 2 ft tall
1 - 2 ft wide
WUCOLS: Very Low - Low



Achillea millefolium
Common Yarrow
20%
1 - 3 ft tall
0.5 - 1.5 ft wide
WUCOLS: Low



Lupinus nanus
Sky Lupine
15%
0.33 - 2 ft tall
1 ft wide
WUCOLS: Very Low - Low



Festuca idahoensis
Idaho Fescue
25%
1 - 2.6 ft tall
0.5 ft wide
WUCOLS: Very Low