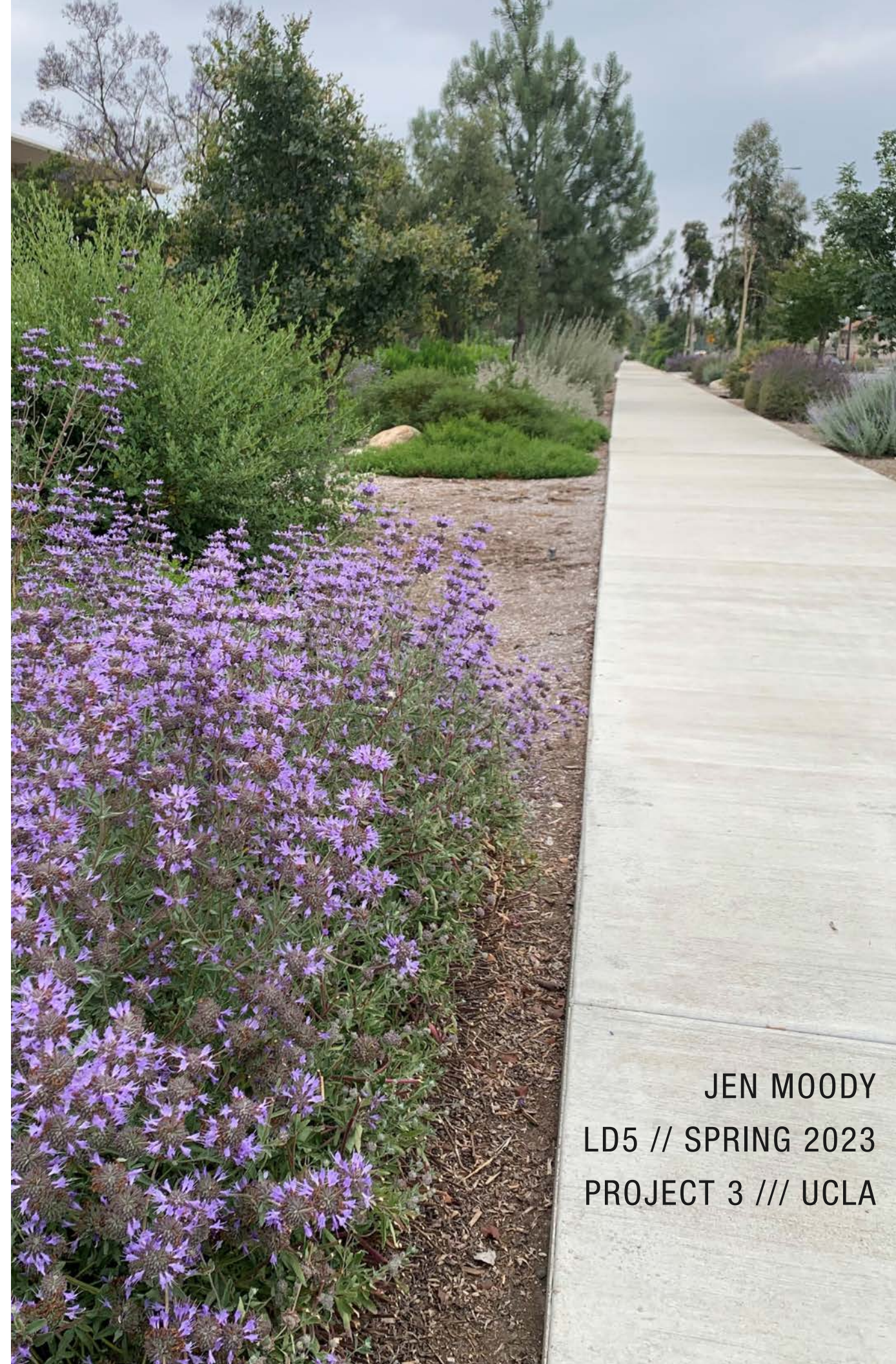




UCLA CAMPUS
LE CONTE // WESTWOOD
ENTRY REDESIGN



JEN MOODY
LD5 // SPRING 2023
PROJECT 3 /// UCLA

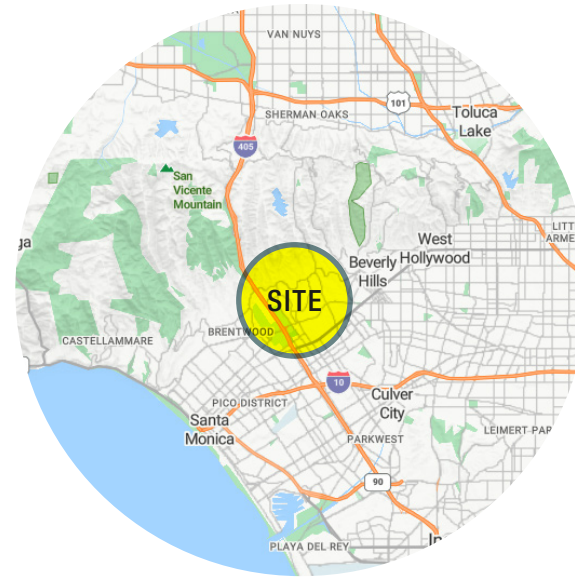
SITE ANALYSIS:

UCLA ENTRANCE, LA CONTE AVE + WESTWOOD BLVD



LOCATED AT THE CORNER OF LE CONTE AND WESTWOOD, THE SITE IS ON THE SOUTH SIDE OF CAMPUS AND IS A MAIN ENTRANCE TO UCLA.

SURROUNDED BY UCLA MEDICAL BUILDINGS THERE ARE SEVERAL BUS STOPS ADJACENT TO THE INTERSECTION, BOTH CREATES AN OPPORTUNITY TO HAVE VISITORS WHO WOULD USE THE LOCATION, IF GIVEN A REASON TO STAY.

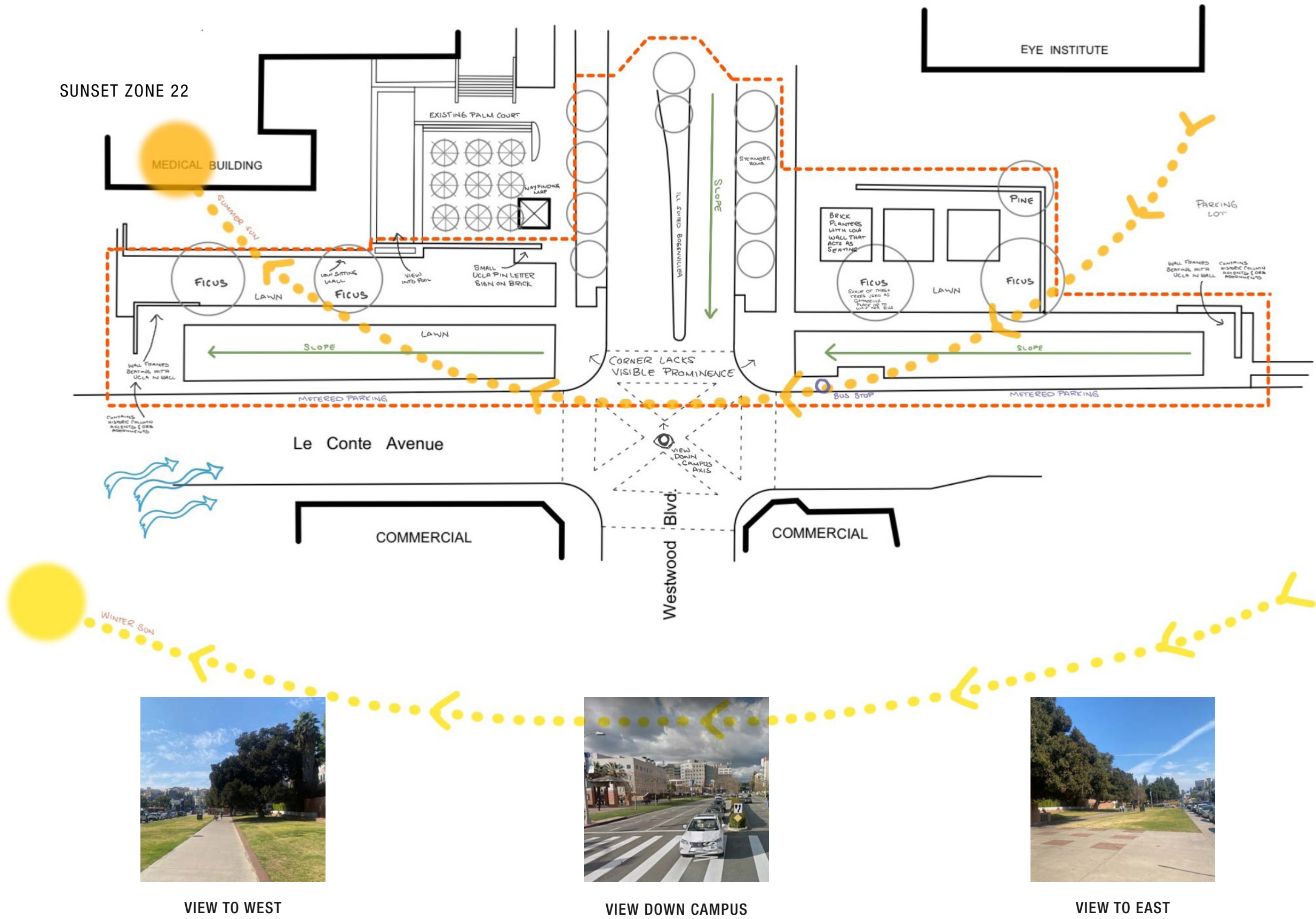


VIEW OF SITE FROM GOOGLE MAPS STREET VIEW



SITE ANALYSIS:

UCLA ENTRANCE, LA CONTE AVE + WESTWOOD BLVD



While much of UCLA's architecture is historic, the plantings in this portion are simply dated. Installed at a time when little concern was given to water consumption or creating habitat, the area is currently dominated by turf. This unassuming corner does not feel like an entrance into one of the nation's finest schools and is easily missed as you are driving by the campus. Even for pedestrians there is little indication that you have entered a college campus, other than temporary banners, a dilapidated map of campus, and tiny pin letters on a mass of brick wall that looks quite similar to the rest of the brick walls in the area.

The palm tree patio and pond with a peek-a-boo notch out of the wall are an appreciated point of place making. The palms are icons of Southern California (despite only having one native of our own), especially within the context of Westwood and Beverly Hills neighborhoods. The water feature is completely neglected but could be highlighted if people were drawn to the area.

This underutilized land does not offer much to animals, insects, or humans and instead takes resources that could be used more wisely. Several mature trees do offer excellent shade and habitat. And a row of London Plane trees creates a nice line of sight into campus.

There is much opportunity to make an impact, not only visually but also by making a statement through the plant choices. Creating a landscape in line with the ideals of the institution will speak volumes to campus visitors, even if only subconsciously noticed.

HISTORICAL CONTEXT:

UCLA's LANDSCAPING

Ralph D. Cornell was the supervising landscape architect at UCLA from 1937-72. Early in his career he formed a friendship with noted native plant expert, Theodore Payne, who took him under his wing. The two spent a lifetime pursuing their love of native plants and landscapes.

Cornell has been quoted as saying UCLA should be a
“college in a garden”

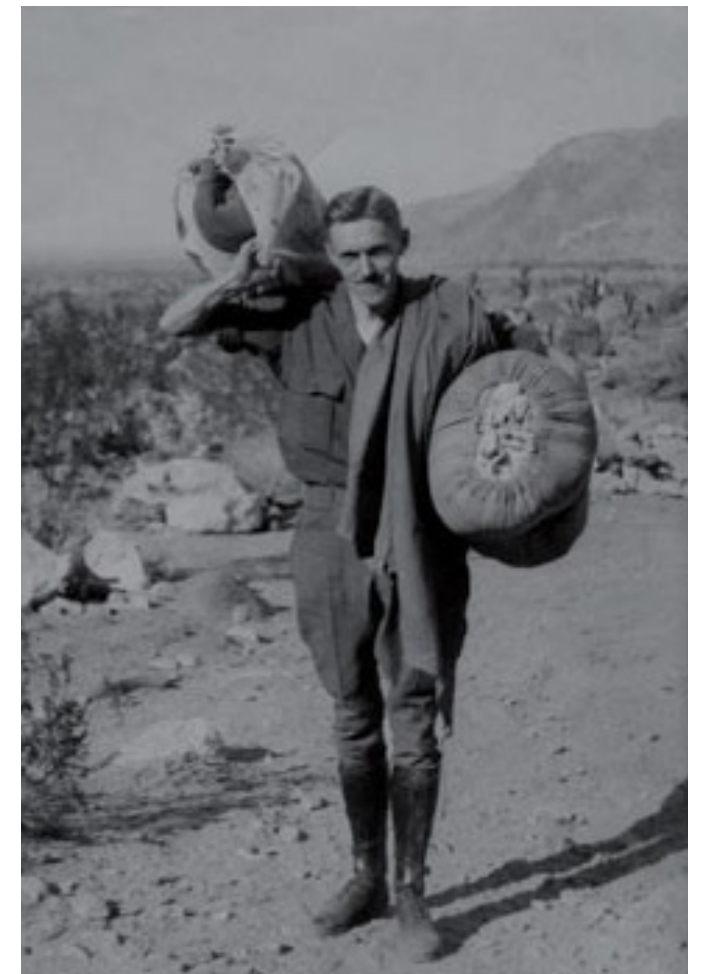
This southern entrance into campus has gone into disrepair and we have an opportunity to carry on the legacy of Cornell, expanding the native plant footprint on campus and turning an unused space into a garden for visitors to enjoy and learn.

The selected plants are primarily from the Southern California region or are adapted to it. They thrive in our climate, create a habitat oasis within the city, and add to the beauty of campus.

*Left to right, clockwise:
Photo of Southern California in the
1930's taken by Cornell.*

*Theodore Payne in 1918, a little
before he and Cornell became friends.*

*Cornell trekking in Coachella
valley in the 1920's.*



A NEW CAMPUS ENTRANCE: SKETCHES + INSPIRATION



HONEY MESQUITE
PROVIDE VISUAL
PRESENCE AND
SEASONAL INTEREST



LARGE AGAVE ECHO THE
SHAPES OF THE PALM
TREES AND SUBTLY
ADD BLUE TONES



LARGE LETTERS
NEAR THE STREET
CREATE RECOGNIZABLE
ENTRANCE



NATIVE PLANTS FRAME THE
ENTRANCE, LIKE THESE
FUCHSIA WHICH PROVIDE
COLOR IN LATE SUMMER



MEXICAN FENCE POST
CACTUS DRAW THE EYE
AND FRAME THE SPACE



A LARGE, MODERN SCULPTURE
SURROUNDED BY BUCKWHEAT
AND GRASSES FURTHER
SIGNIFIES PROMINENCE



SAGES LINE THE WALK,
THEIR LONG STEMS
ADDING INTEREST IN THE
SPRING INTO SUMMER

A NEW CAMPUS ENTRANCE: SKETCHES + INSPIRATION



A BIOSWALE REPLACES WHAT WAS ONCE JUST TURF UNDER THE SYCAMORES AND RETAINS NEEDED WATER



ADDITIONAL BRICK WALLS WITH WOODEN BENCHES DEFINE GATHERING SPACES AND ARE SOFTENED BY NATIVE PLANTS



DG PATHS AND OPENINGS CREATE INFORMAL GATHERING AREAS, DEFINED BY GRASSES AND BOULDERS AT THE EDGES



A MIXTURE OF TEXTURES, PLANTS LIKE THE CHAPARRAL YUCCA ADD YEAR ROUND STRUCTURE AND SEASONAL INTEREST



A FIELD OF GRASSES BORDER THE TREES AND GATHERING SPACES, WITH WHITE GAURA FLOWING IN THE WIND

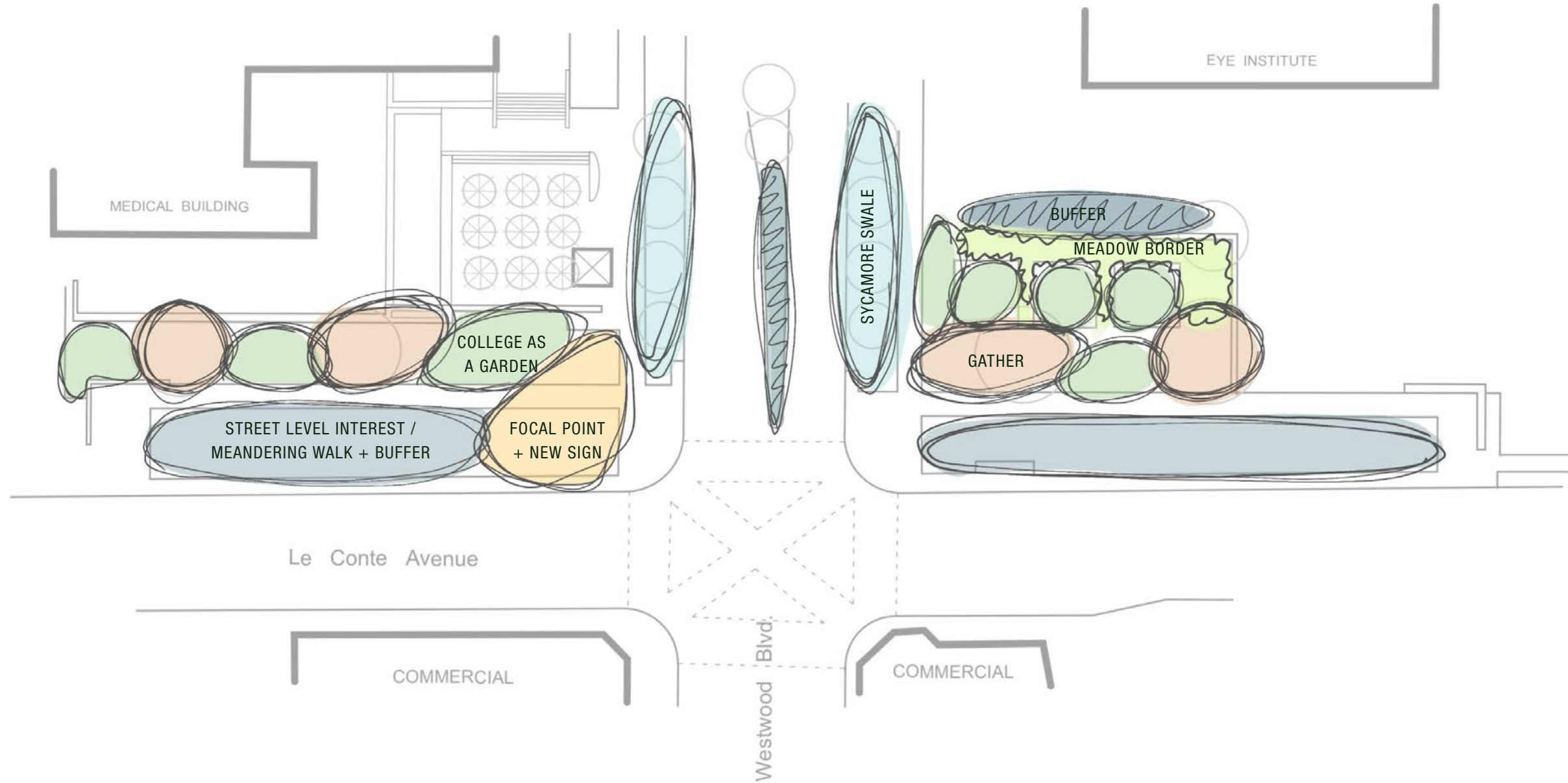


NEAR THE STREET, LARGE NATIVES ARE UNFUSSY AND SPACED FAR ENOUGH APART FOR SAFE SIGHT LINES

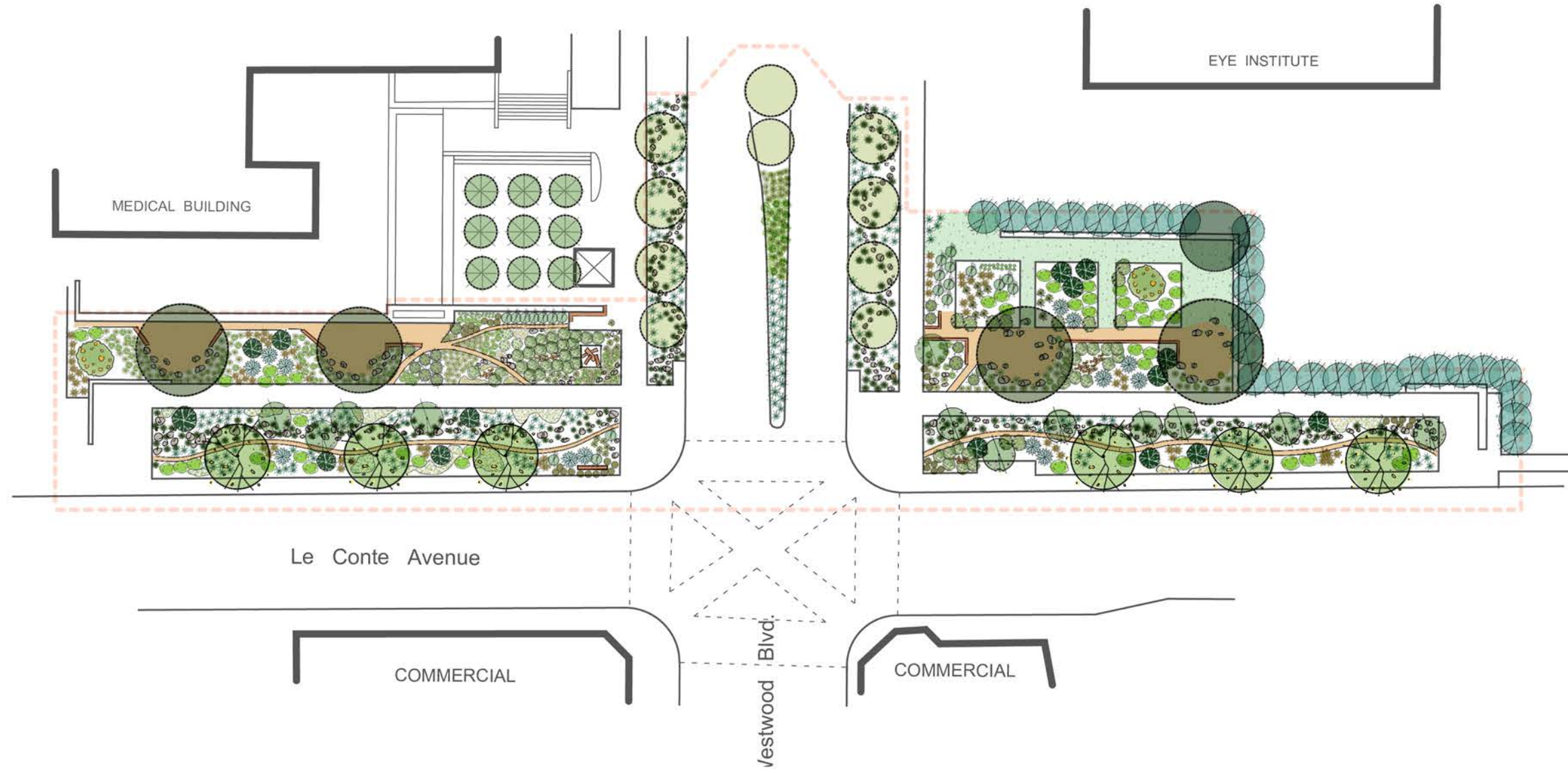


REDBUDS, GRASSES, AND YARROWS ARE CLOSEST TO THE BIOSWALE THAT MEANDERS THROUGH

PLANTING CONCEPT: PRIMARY ZONES

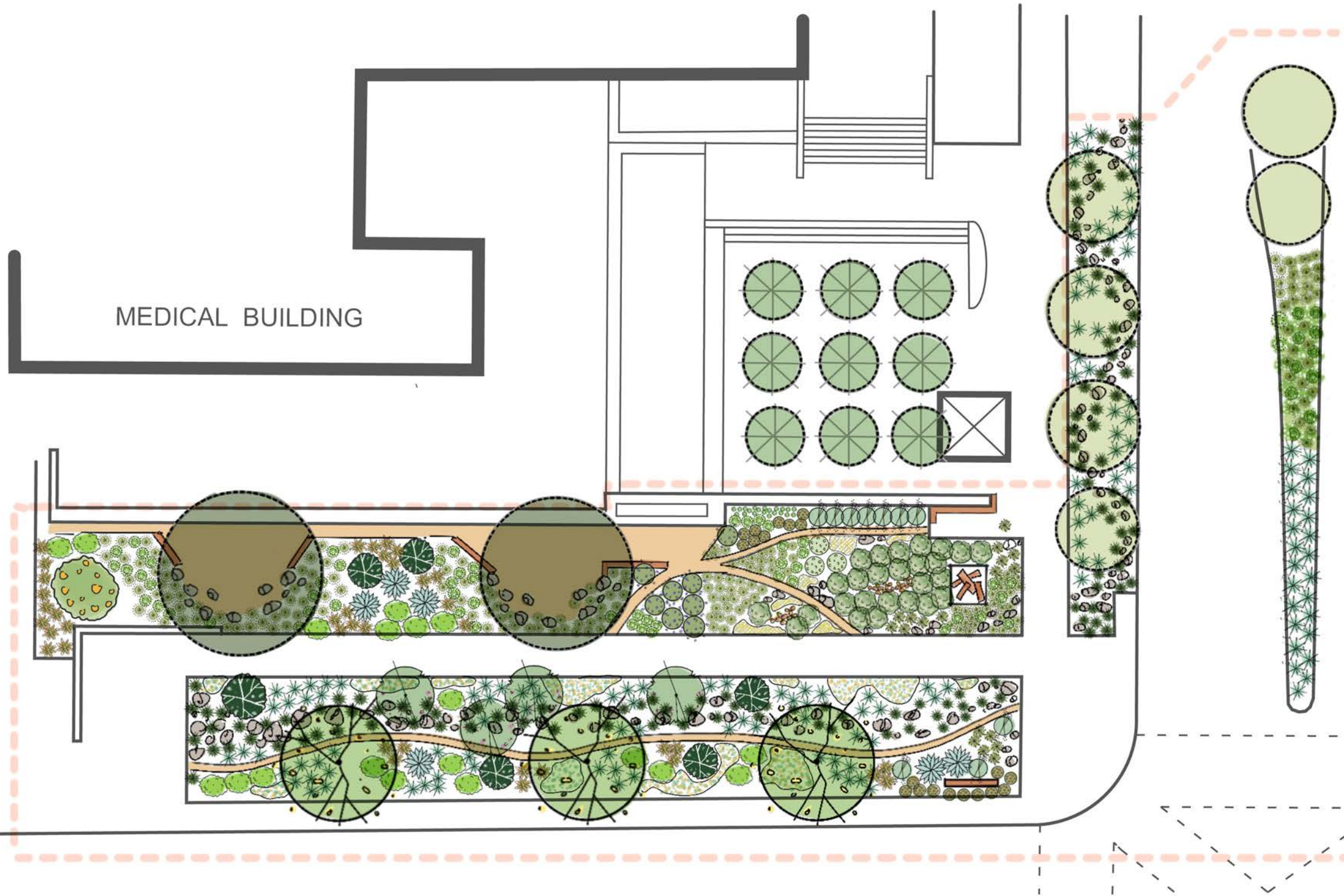


PLANTING PLAN: OVERALL PROJECT



PLANTING PLAN:

WEST SIDE



LEGEND (abbreviation based on botanical name)

- | | | | |
|--|-----|--|-----|
| | PG | | SC |
| | FS | | SA |
| | FC | | SMR |
| | CO | | PM |
| | CDS | | OL |
| | AA | | YWW |
| | BPC | | AP |
| | EF | | EC |
| | | | JP |
| | | | CS |
| | | | MR |
| | | | OEL |



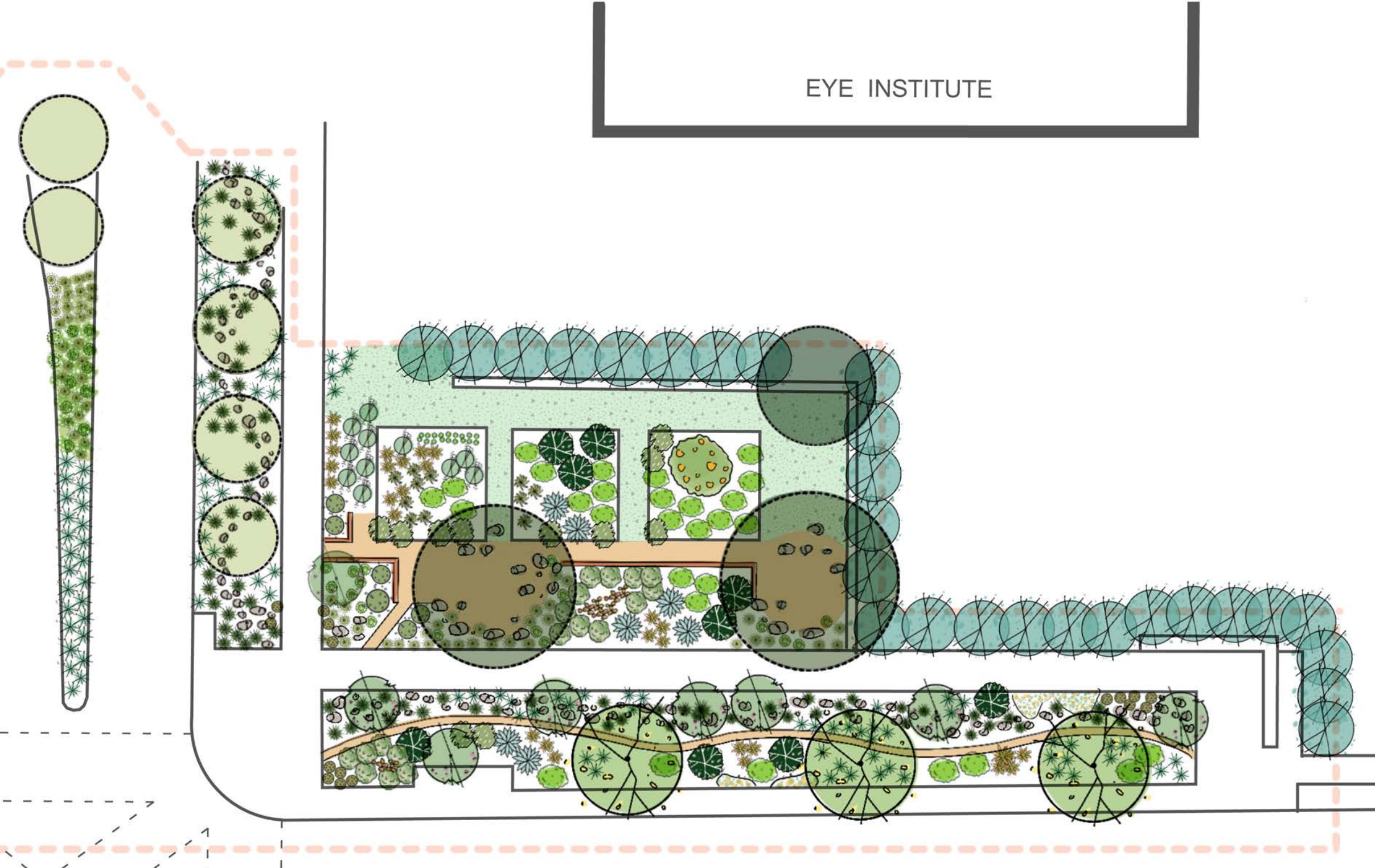
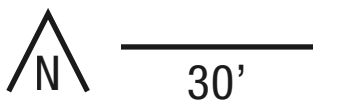
PLANTING PLAN:

EAST SIDE

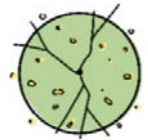


LEGEND (abbreviation based on botanical name)

- | | | | |
|--|-----|--|-----|
| | PG | | SC |
| | SA | | SMR |
| | FS | | PM |
| | FC | | OL |
| | CO | | YWW |
| | CDS | | AP |
| | AA | | EC |
| | BPC | | JP |
| | EF | | CS |
| | | | MR |
| | | | OEL |



THE PLANTS: PRIMARY PALLETE



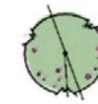
HONEY MESQUITE
Prosopis glandulosa



PINEAPPLE GUAVA
Feijoa sellowiana



FLANNEL BUSH
Fremontodendron californicum



WESTERN REDBUD
Cercis occidentalis



DARK STAR MOUNTAIN LILAC
Ceanothus Dark Star



AMERICAN CENTURY PLANT
Agave americana




COYOTE BRUSH
Baccharis pilularis ssp. consanguinea



CALIFORNIA BUCKWHEAT
Eriogonum fasciculatum

THE PLANTS: PRIMARY PALLETE



 CLEVELAND SAGE
Salvia clevelandii




 WHITE SAGE
Salvia apiana




 CREEPING BLACK SAGE
Salvia mellifera repens




 MEXICAN FENCE POST
Pachycereus marginatus



 COASTAL PRICKLY PEAR
Opuntia littoralis




 CHAPARRAL YUCCA
Hesperoyucca whipplei



 STONE ALOE
Aloe petricola



 CALIFORNIA FUCHSIA
Epilobium canum

THE PLANTS: PRIMARY PALLETE



COMMON RUSH
Juncus patens



SAN DIEGO SEDGE
Carex spissa

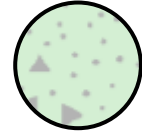


DEERGRASS
Muhlenbergia rigens



WHITE GAURA
Oenothera lindheimeri

THE PLANTS: MEADOW HYDROSEED MIX



CALIFORNIA MELICGRASS
Melica californica



BLUE GRAMA
Bouteloua gracilis



CALIFORNIA CANARY GRASS
Phalaris californica



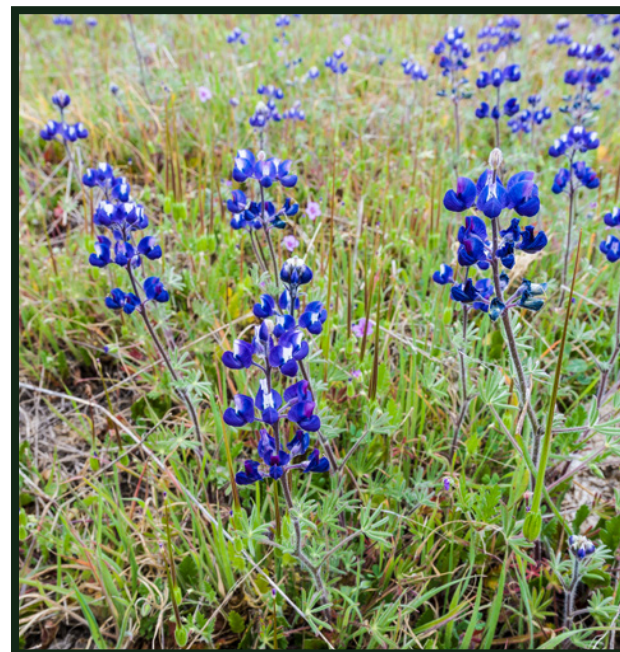
BLUE-EYED GRASS
Sisyrinchium bellum



COMMON YARROW
Achillea millefolium



CALIFORNIA GOLDFIELDS
Lasthenia chrysostoma



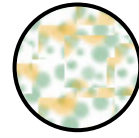
MINIATURE LUPINE
Lupinus bicolor



PUNCH BOWL GODETIA
Clarkia bottae

THE PLANTS:

WILDFLOWER HYDROSEED MIX



CALIFORNIA POPPY
Eschscholzia californica



CATERPILLAR PHACELIA
Phacelia cicutaria



BABY BLUE EYES
Nemophila menziesii



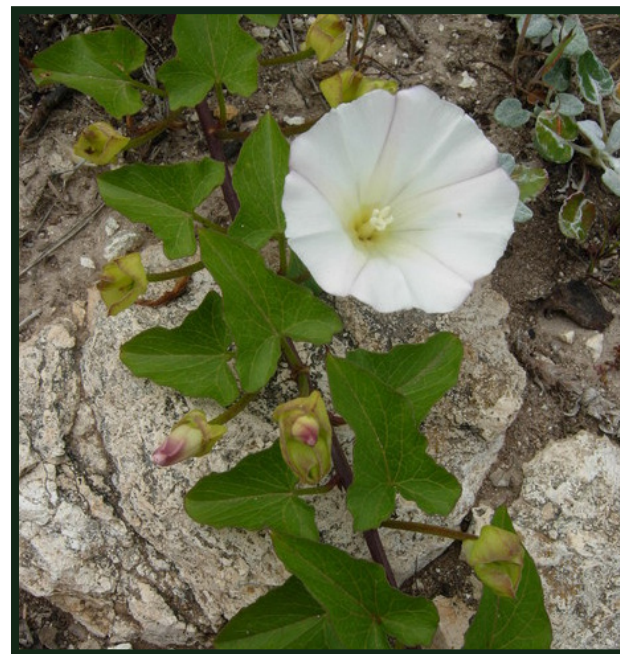
CREAMCUPS
Platystemon californicus



ELEGANT CLARKIA
Clarkia unguiculata



CALIFORNIA CUDWEED
Pseudognaphalium californicum



COAST MORNING GLORY
Calystegia macrostegia ssp. *cyclostegia*



WILD MARIGOLD
Baileya multiradiata