

**ROOTED
IN BEAUTY:**
ENHANCING SLOPE,
HABITAT, AND COMMUNITY



JEN MOODY
LD5 // SPRING 2023
PROJECT 2 /// SLOPES

This site sits at the intersection of wilderness and residential sprawl. Wildwood Regional Park contains over 1,700 acres of valuable coastal sage scrub habitat with 17 miles of hiking trails for Thousand Oaks residents to enjoy. The slopes gently descend toward a residential road that is primarily used by the local neighborhood. Carefully selected plant species not only provide sanctuary for wildlife seeking refuge and food, but also enhance the scenery, captivating those passing by—whether on foot, in a vehicle, or enjoying from their home.

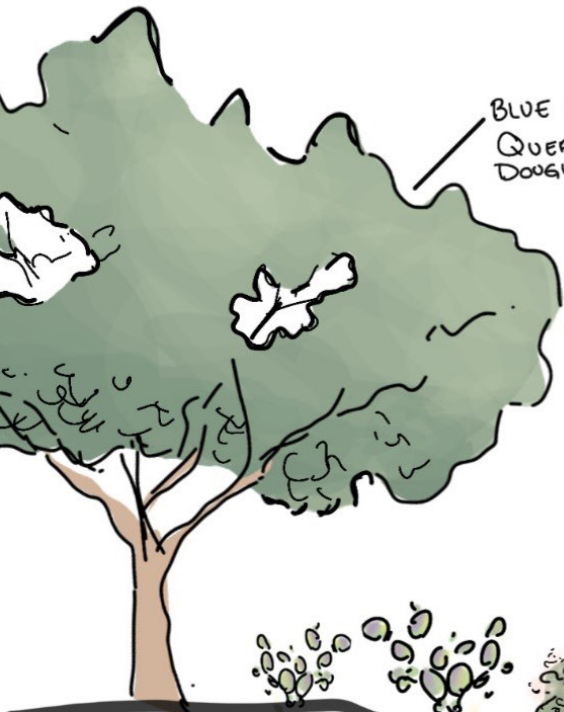


Of special concern is the Cactus Wren, who relies on the native prickly pear and cholla cactus. These plant species can be found at the top of the slope and will be integrated lower in the design to allow those walking by to observe the wren more closely.

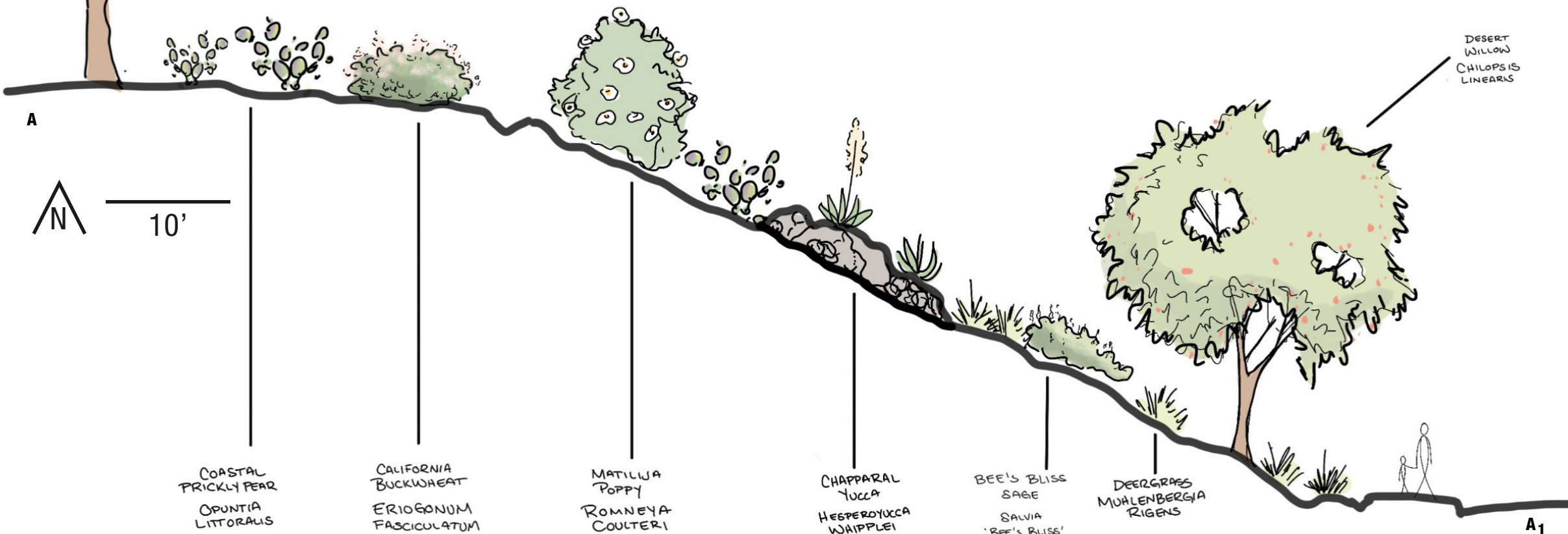
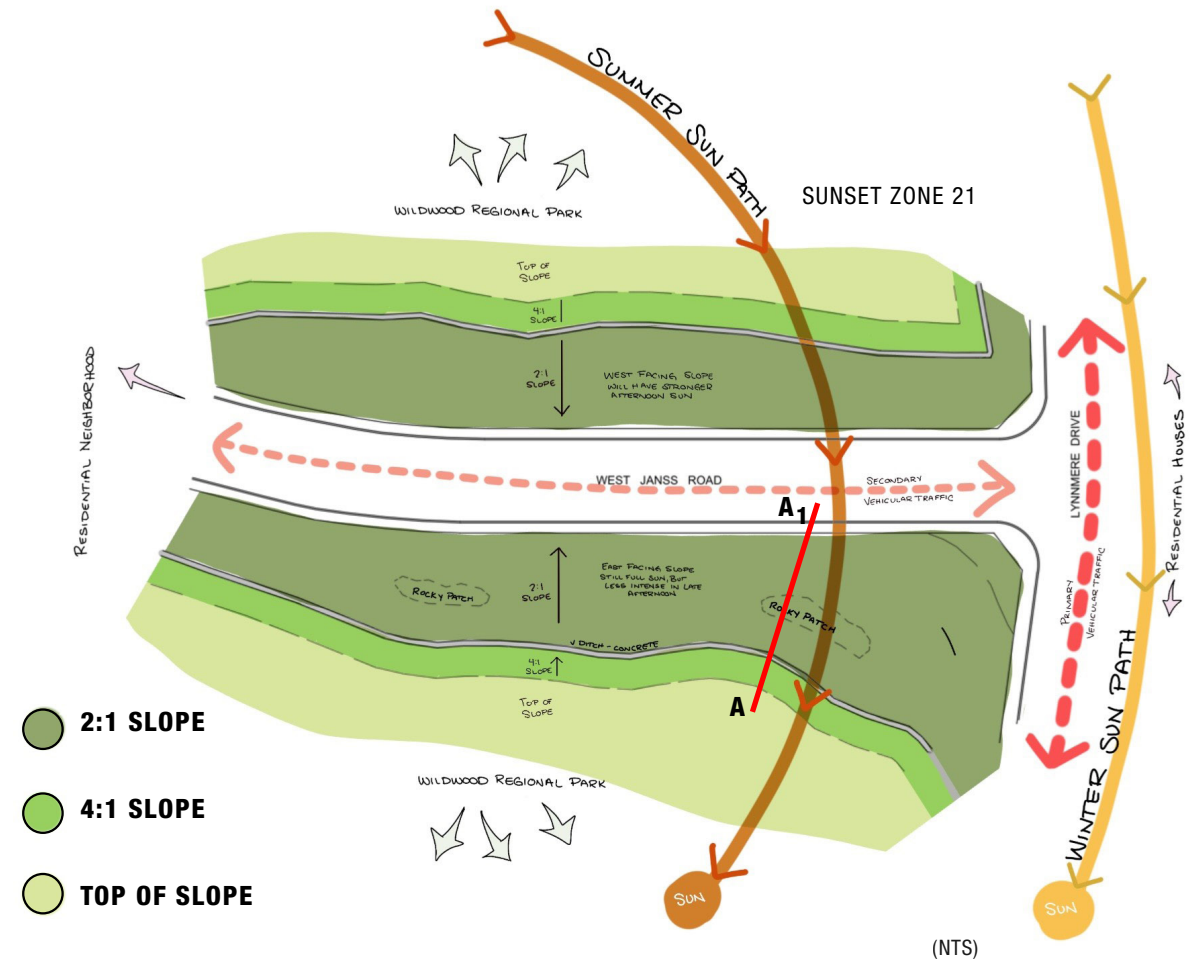


SITE ANALYSIS + SECTION:

JANSS + LYNNMERE, TO



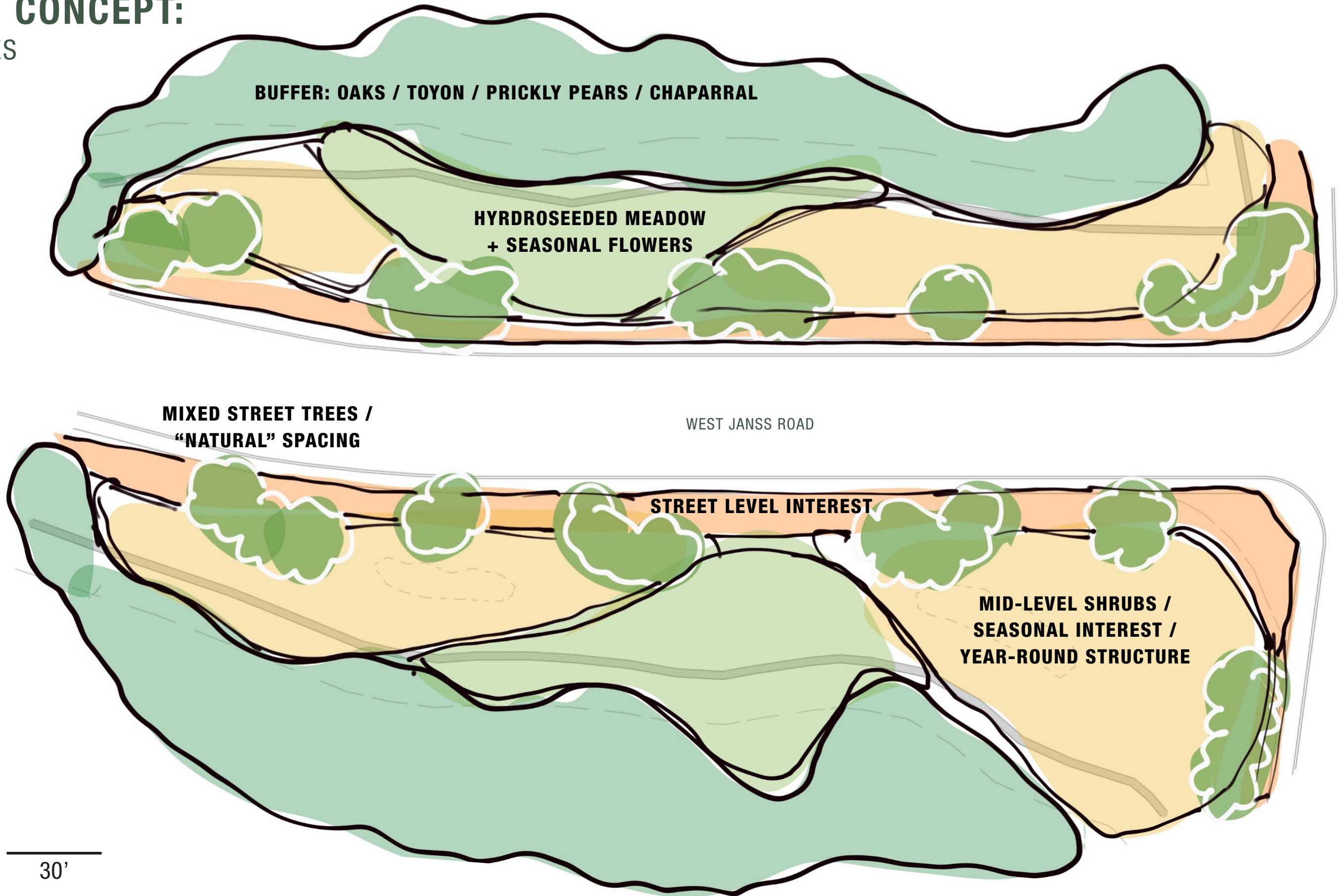
BLUE OAK
QUERCUS DOUGLASII



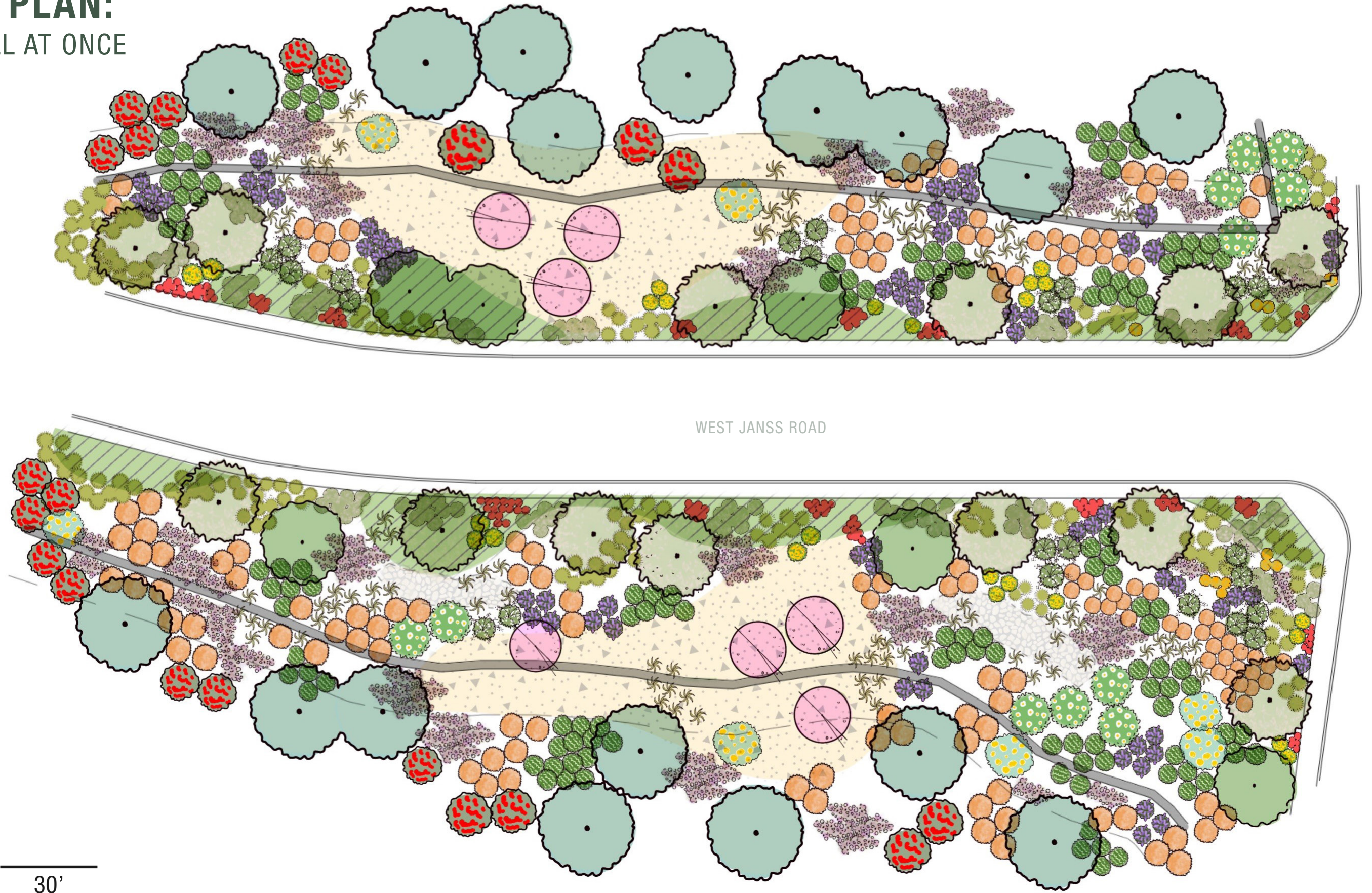
The primary concern with this site is slope stabilization, for which nature provides an abundance of options through the use of native plants to populate the hillsides. The next objective is to provide habitat, achieved by selecting native California species that support the local wildlife. The third goal is to create something visually appealing and captivating for Thousand Oaks residents—an indigenous landscape intended to inspire them to incorporate these same plants into their own yards. Layers of texture and color will blanket the hillside, revealing new points of interest with each changing season.

PLANTING CONCEPT:

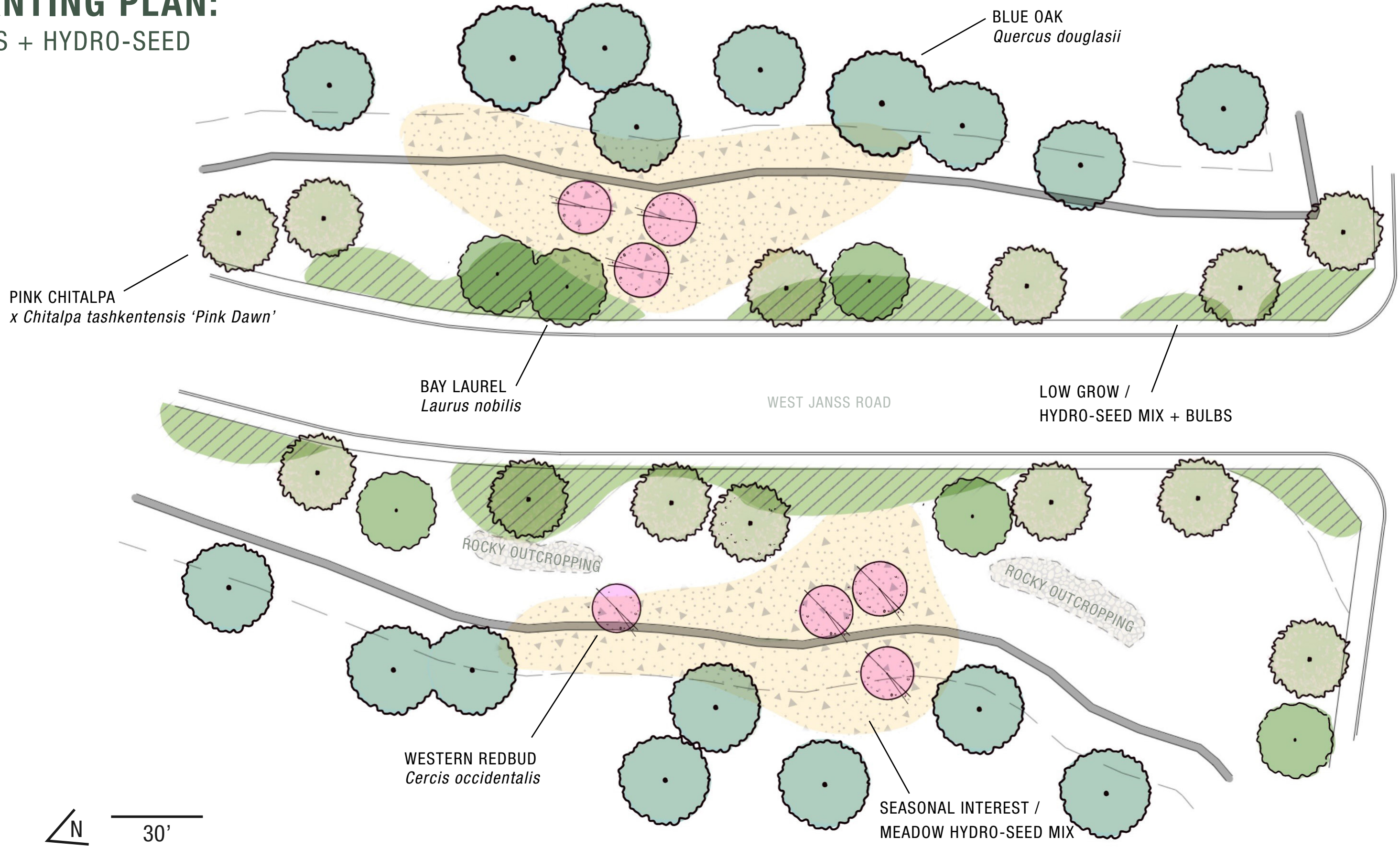
PRIMARY ZONES



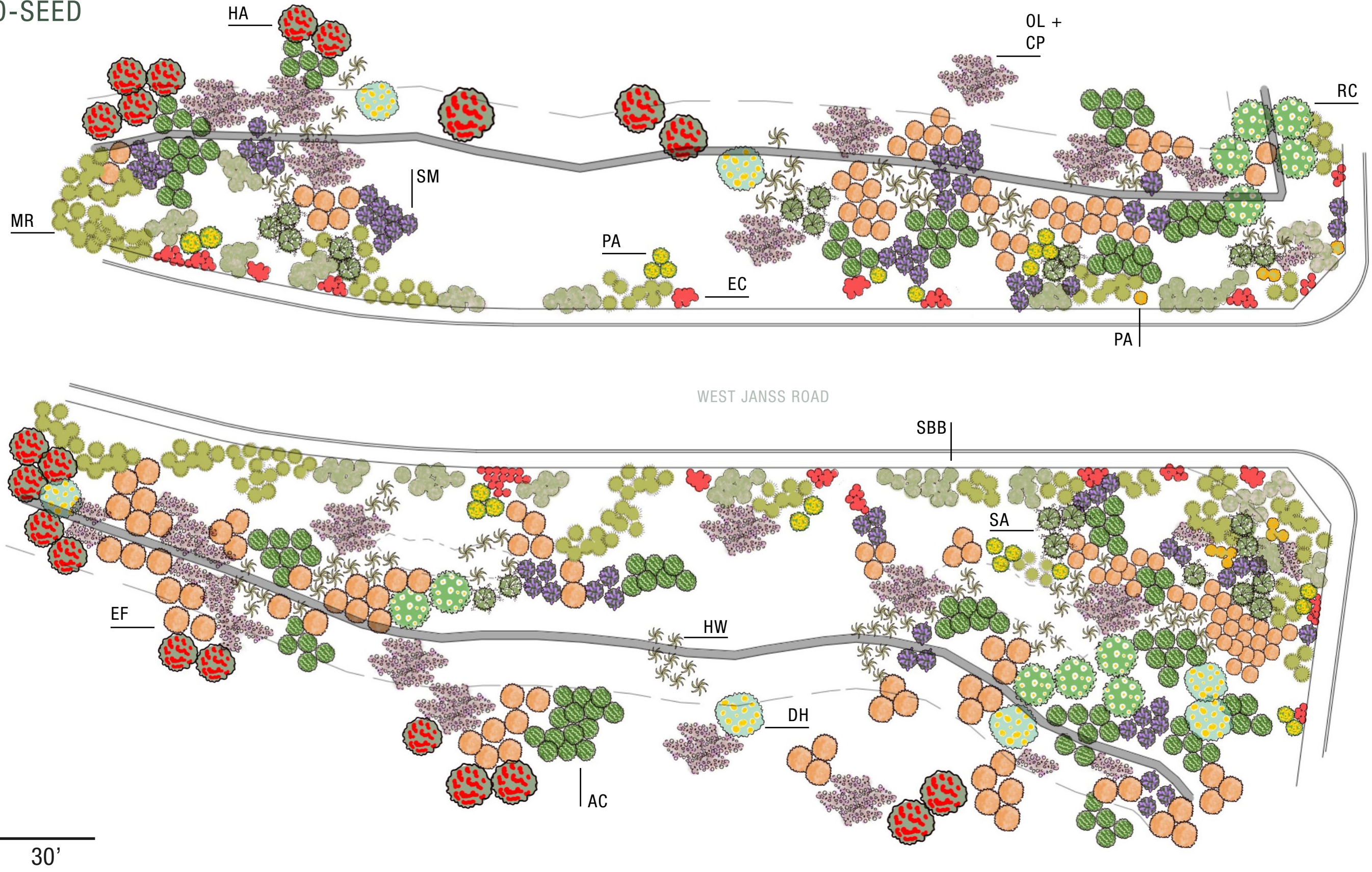
PLANTING PLAN: EVERYTHING ALL AT ONCE



PLANTING PLAN: TREES + HYDRO-SEED



PLANTING PLAN: TREES + HYDRO-SEED



PLANTING PLAN: PLANTED LIST



Palmer's Indian Mallow
Abutilon palmeri



California Sagebrush
Artemisia californica



Coastal Cholla
Cylindropuntia prolifera



Channel Islands Tree Poppy
Dendromecon harfordii



California Fuchsia
Epilobium canum



California Buckwheat
Eriogonum fasciculatum



Chaparral yucca
Hesperoyucca whipplei



Toyon
Heteromeles arbutifolia



Deergrass
Muhlenbergia rigens



Coast Prickly Pear
Opuntia littoralis

PLANTING PLAN:

PLANTED LIST



Bladderpod
Peritoma arborea



Matilija Poppy
Romneya coulteri



Bee's Bliss Sage
Salvia x 'Bee's Bliss'



Black Sage
Salvia mellifera



White Sage
Salvia apiana

MEADOW HYDRO-SEED LIST

California Melic
Melica Californica

Blue Grama Grass
Bouteloua gracilis

California Canarygrass
Phalaris californica

White Yarrow
Achillea millefolium

Blue-Eyed Grass
Sisyrinchium bellum

Coast Goldfields
Lasthenia chrysostoma

Lupinus bicolor
Miniature Lupine

Farewell-to-Spring
Clarkia bottae

LOW GROW HYDRO-SEED + BULB LIST

Owl's Clover
Castilleja exserta

Mountain Garland
Clarkia unguiculata

Desert Marigold
Baileya multiradiata

White Yarrow
Achillea millefolium

Blue-Eyed Grass
Sisyrinchium bellum

Meadow Onion
Allium unifolium

White Globe Lily
Calochortus albus

Common Goldenstar
Bloomeria crocea