



Central Coast Goes South



JEN MOODY
LD5
SPRING 2023
PROJECT 1

THE CONCEPT IS SIMPLE: capture the magic of California's Central Coast and bring it home to Santa Monica. The layers of greens blending into blues, yellows, tans, and purples create a palette. Weathered surfaces reassure you that some things endure, designed to last and to age in a way that celebrates the beauty of imperfection. The casual and seemingly untamed nature of the landscape allows the hustle of the outside world to effortlessly melt away.

Using climate appropriate plants and materials, we can recreate this feeling of sanctuary in Southern California.

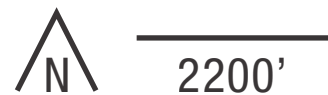


Central Coast Goes South: Location Analysis

1834 16th Street, Santa Monica, CA 90025

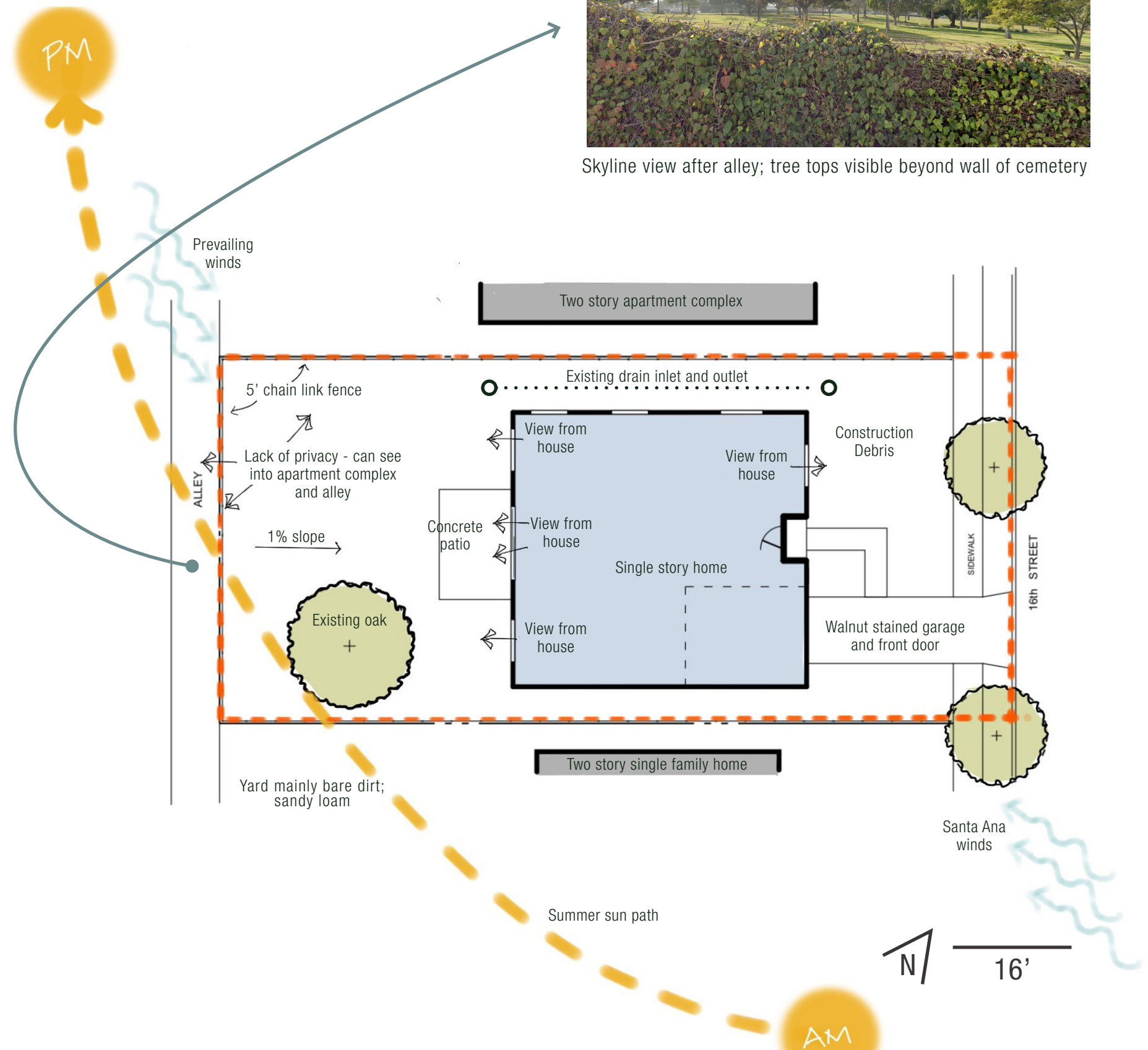


Skyline view after alley; tree tops visible beyond wall of cemetery

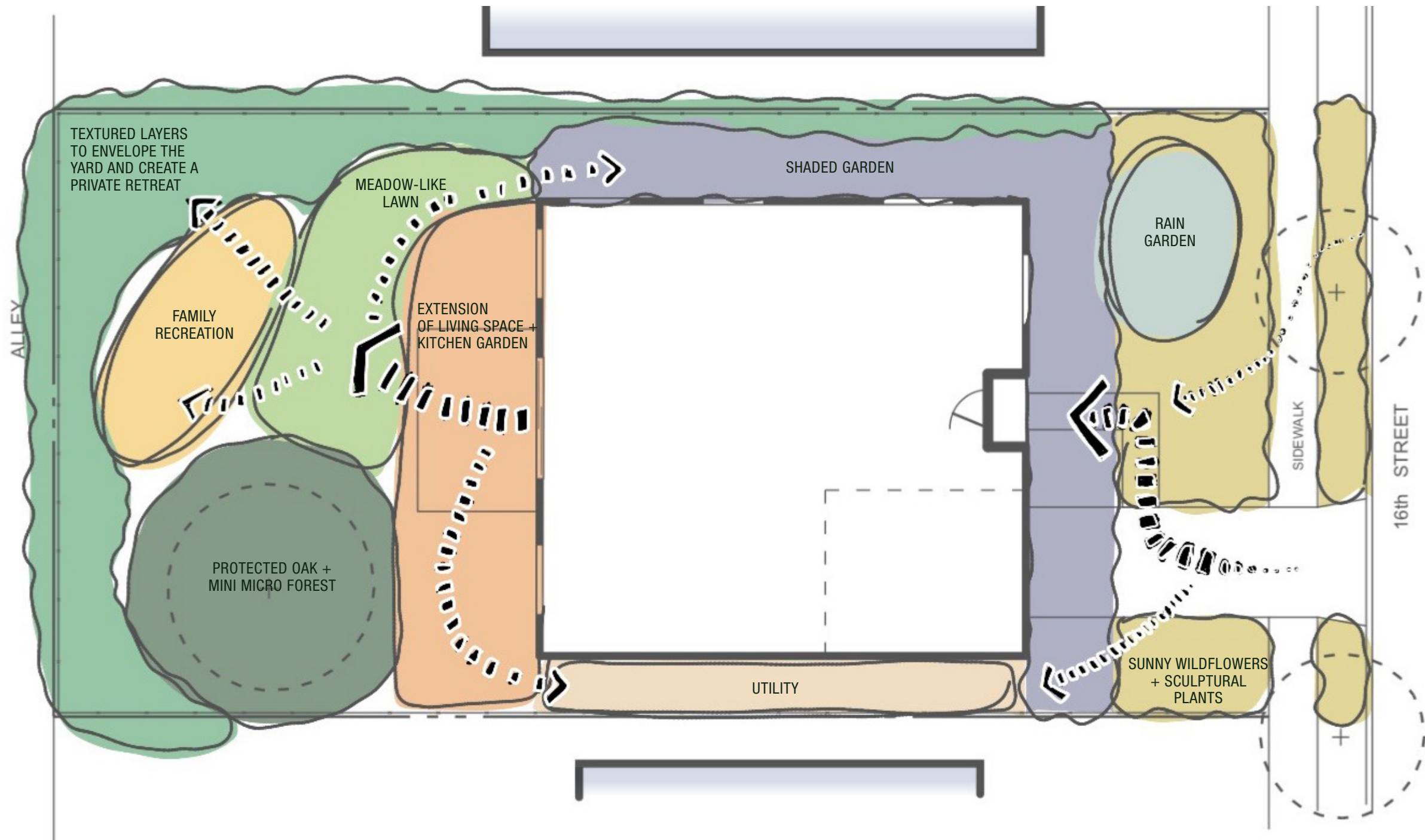


Hardiness Zone: 10b

Sunset Zone: 24

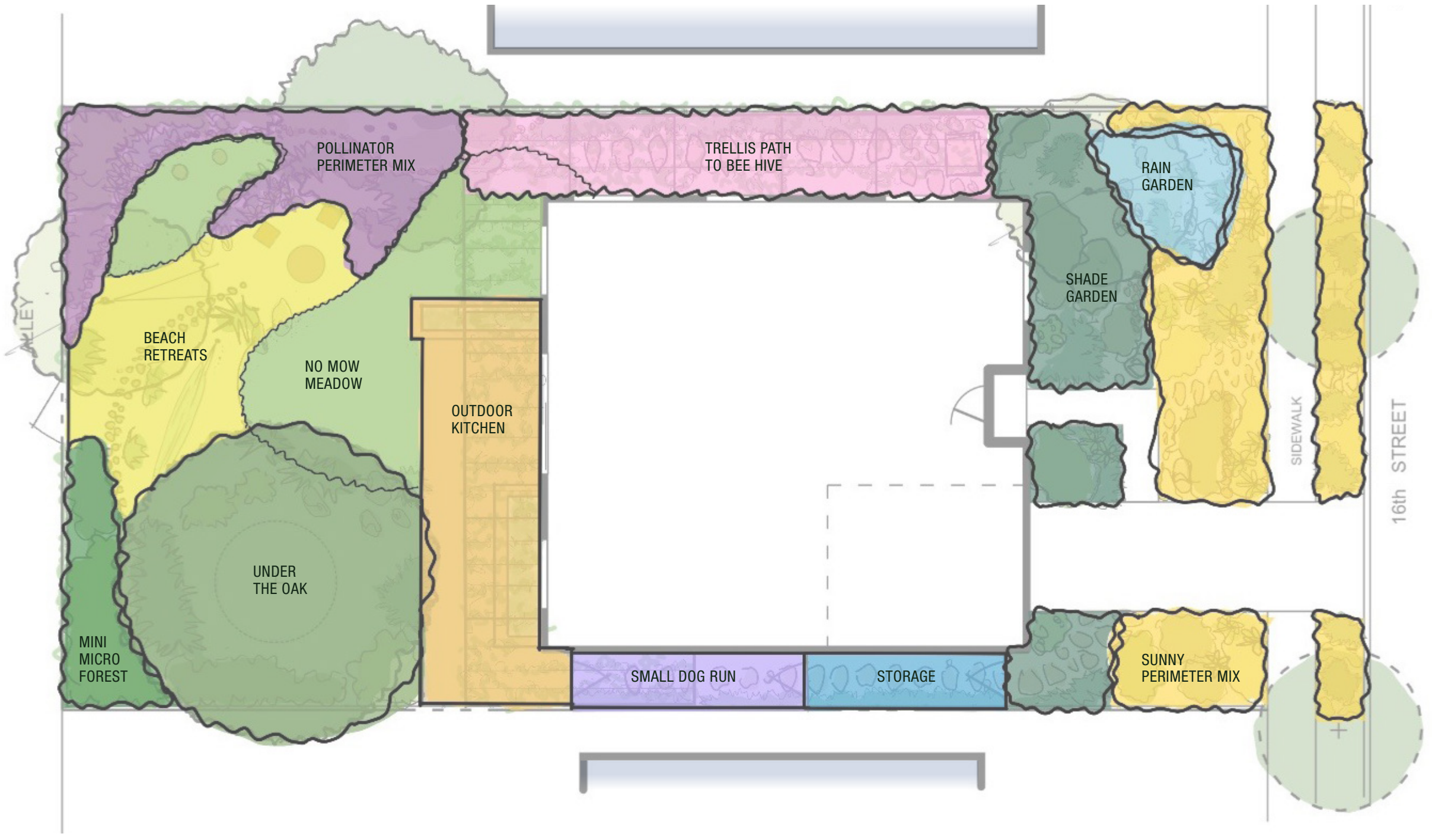


Central Coast Goes South: Bubble Diagram



Seasonal flowers attract pollinators and bring the yard to life.

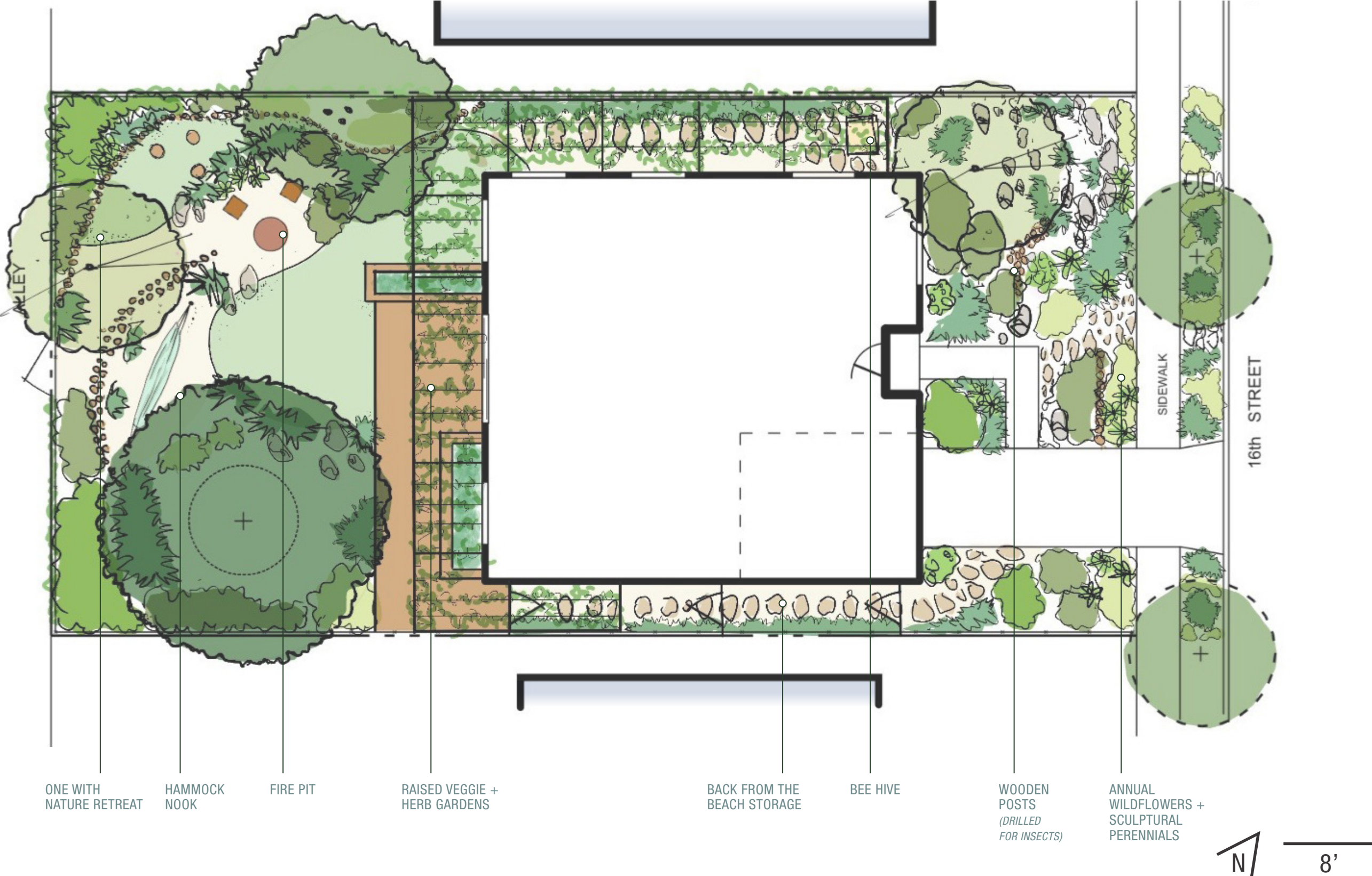
Central Coast Goes South: The Breakdown



The yard is framed with the texture and sound of lush and rustling leaves.

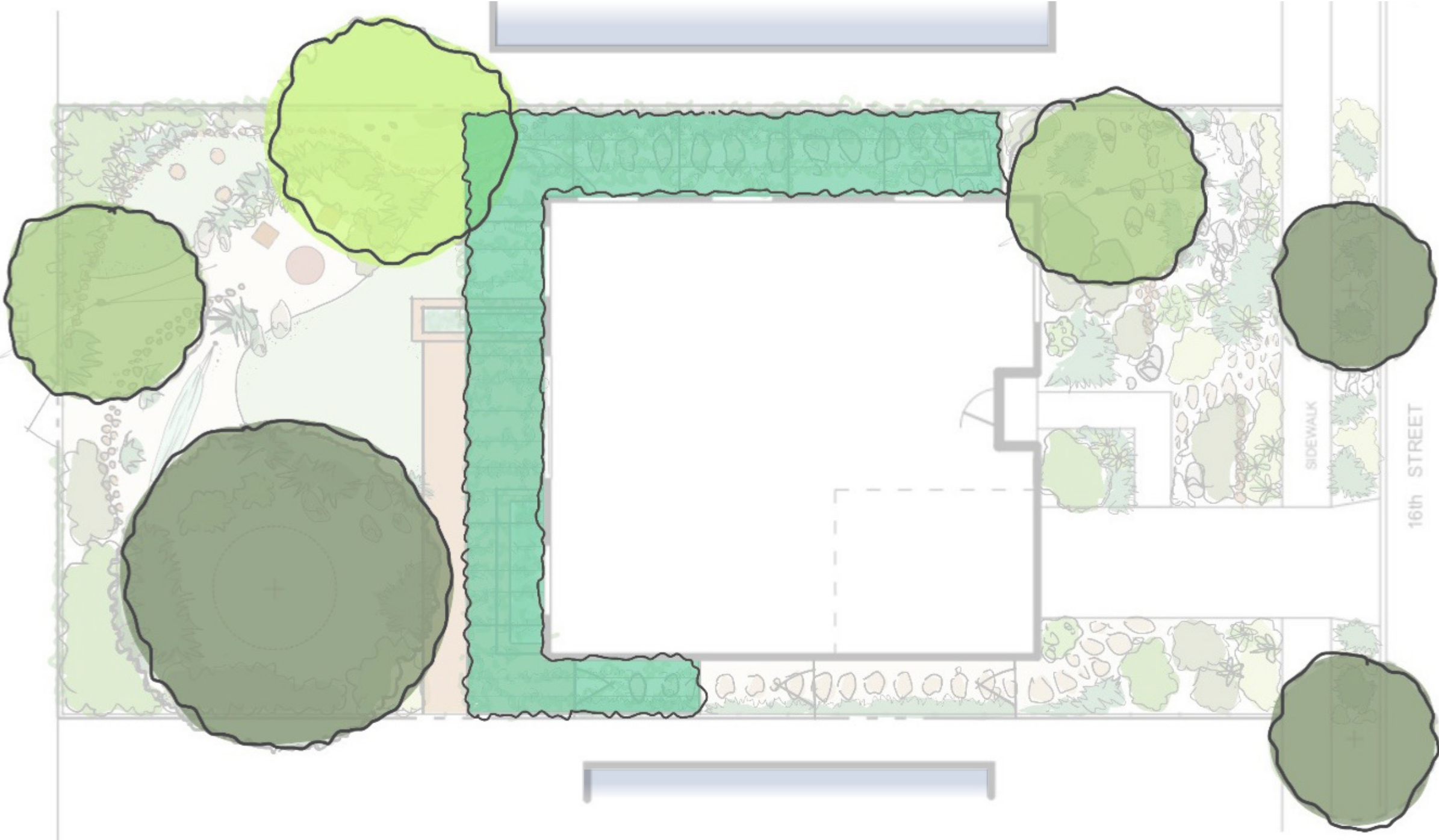


Central Coast Goes South: The Plan



Swaying grasses and beach-aged wood create a calm retreat.

Central Coast Goes South: Trees + Trellis



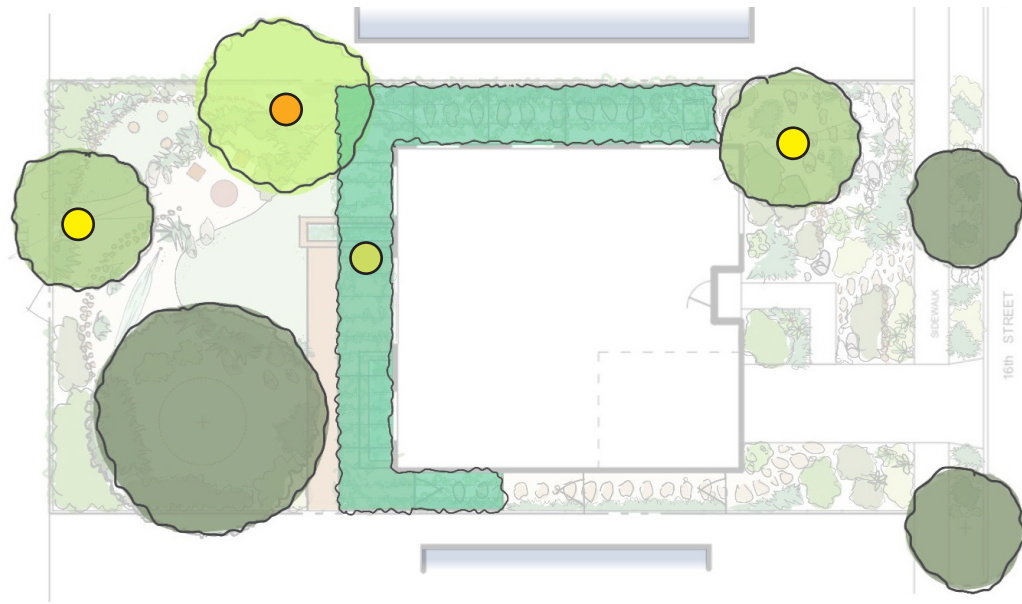
-  EXISTING TREES
-  TALL TREE
-  MEDIUM TREES
-  TRELLIS VINE



The trellis not only provides shade it defines the space.



Central Coast Goes South: Trees + Trellis



● TALL TREE OPTIONS

These California native trees will add height and screen the yard for privacy from the two story apartment building. The sycamore will require more water.



SANTA CRUZ ISLAND IRONWOOD
Lyonothamnus floribundus ssp. aspleniifolius



WESTERN SYCAMORE
Platanus racemosa



MONTEREY CYPRESS
Hesperocyparis macrocarpa

● MEDIUM TREE OPTIONS

These trees provide habitat, texture, and a sculptural element. Especially the Red Shanks which has a windblown aspect.



DESERT WILLOW
Chilopsis linearis



RED SHANKS
Adenostoma sparsifolium



PURPLE FERNLEAF ACACIA
Acacia baileyana 'Purpurea'

● TRELLIS VINE

Dappled shade, privacy, and food source for humans and wildlife



CALIFORNIA GRAPE
Vitis californica



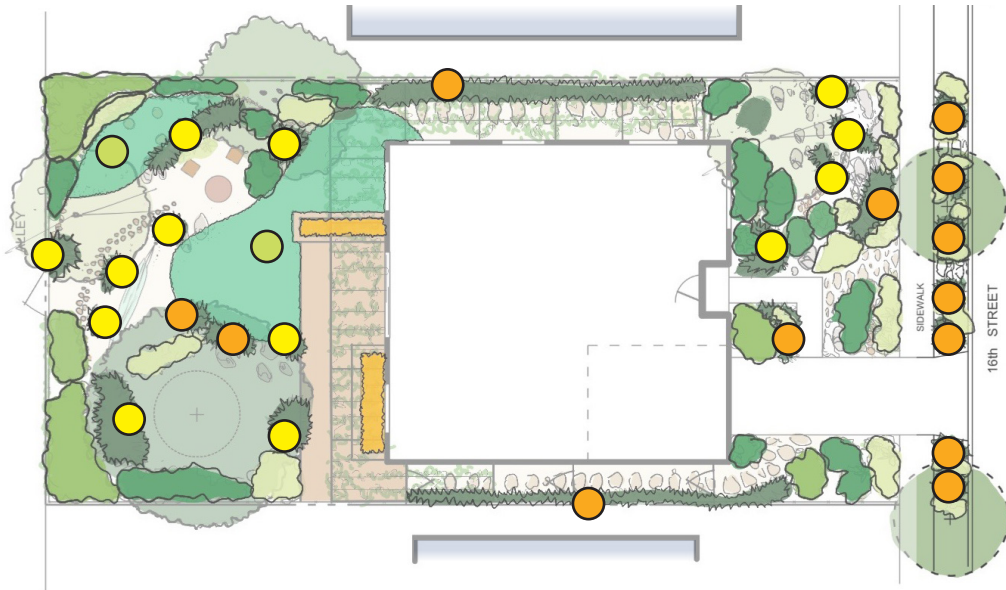
CHAPARRAL CLEMATIS
Clematis lasiantha

Central Coast Goes South: Shrubs + Grasses



The base of the planting design is texture and throughout the seasons new flowers will draw your eye across the yard.

Central Coast Goes South: Grasses



● FOCAL POINT GRASSES

These large grasses are the backbone of this coastal design, creating easy movement in the wind and setting the tone for the palette.



CANYON PRINCE WILD RYE
Leymus condensatus 'Canyon Prince'



DEERGRASS
Muhlenbergia Rigens



SAN DIEGO SEDGE
Carex spissa

● SMALLER ACCENT GRASSES

Smaller grasses tucked against rocks and in the forefront of the garden design will continue the movement and interest of the design.



LITTLE BLUESTEM
Schizachyrium scoparium



JUNEGRASS
Koeleria macrantha



SAND DUNE SEDGE
Carex pansa

● NO MOW MEADOW

Long and lush, this grass is the basis of the meadow. Small wildflower and yarrow can be added for interest and biodiversity.



CLUSTERED FIELD SEDGE
Carex praegracilis



More engaging than turf, this grass holds up to walking and creates habitat.

Central Coast Goes South: Mid-level Shrubs



● PART SHADE



SUNSET MANZANITA
Arctostaphylos 'Sunset'



CREME BRULEE AGAVE
Agave guiengola



APACHE PLUME
Fallugia paradoxa

● SUNNY



BLADDERPOD
Peritoma arborea



WHITE SAGE
Salvia apiana



COYOTE BRUSH
Baccharis pilularis

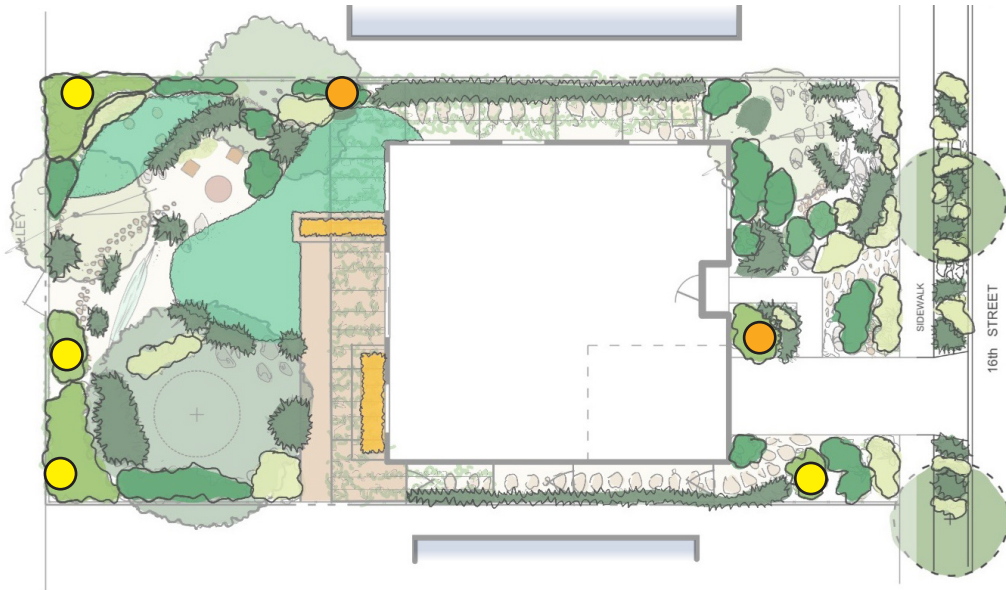


SANTA RITA PRICKLY PEAR
Opuntia santa-rita



BLACK SAGE
Salvia mellifera

Central Coast Goes South: Tall Shrubs + Screens



● PART SHADE



MOUNTAIN MAHOGANY
Cercocarpus betuloides



HOLLY-LEAFED CHERRY.
Prunus ilicifolia



MOCK ORANGE
Philadelphus lewisii

● SUNNY



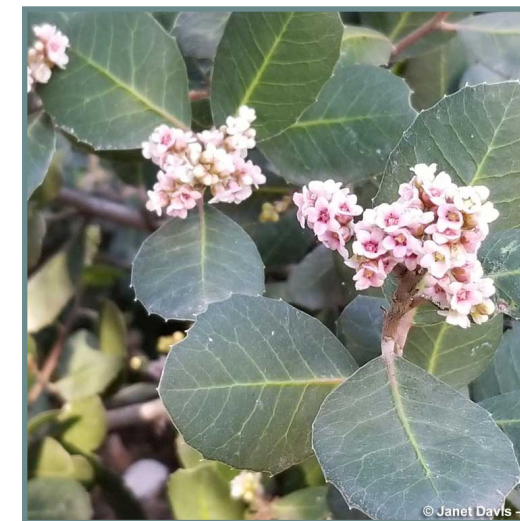
TOYON
HETEROMELES ARBUTIFOLIA



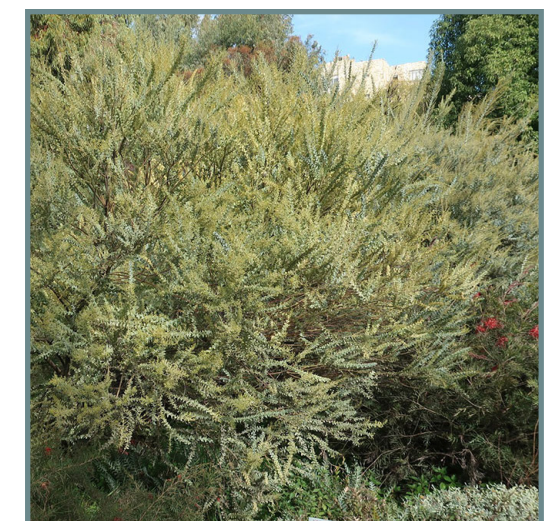
GREENBARK CEANOTHUS
Ceanothus spinosus



DESERT LAVENDER
Condea emoryi



LEMONADE BERRY
Rhus integrifolia



KNIFE-LEAF WATTLE
Acacia cultriformis

Central Coast Goes South: Wildflowers + Low Shrubs



● PART SHADE



HUMMINGBIRD SAGE
Salvia spathacea



BLUE ELF ALOE
Aloe 'Blue Elf'



ISLAND ALUM ROOT
Heuchera maxima

● SUNNY



CALIFORNIA FUCHSIA
Epilobium canum



CALIFORNIA POPPY
Eschscholzia californica



CONEJO BUCKWHEAT
Eriogonum crocatum



TRAILING INDIGO BUSH
Dalea greggii



WILD MARIGOLD
Baileya multiradiata



View from deck into backyard

Central Coast Goes South: Plant List

Category	Common Name	Botanical Name	Average Size (HxW)	Origin
Trees + Trellis	SANTA CRUZ ISLAND IRONWOOD	<i>Lyonothamnus floribundus ssp. Aspleniifolius</i>	60'x15'	California Native
Trees + Trellis	WESTERN SYCAMORE	<i>Platanus racemosa</i>	80'x30'	California Native
Trees + Trellis	MONTEREY CYPRESS	<i>Hesperocyparis macrocarpa</i>	70'x40'	California Native
Trees + Trellis	DESERT WILLOW	<i>Chilopsis linearis</i>	40'x25'	California Native
Trees + Trellis	RED SHANKS	<i>Adenostoma sparsifolium</i>	20'x10'	California Native
Trees + Trellis	PURPLE FERNLEAF ACACIA	<i>Acacia baileyana 'Purpurea'</i>	30'x25'	Australia
Trees + Trellis	CALIFORNIA GRAPE	<i>Vitis californica</i>	30' long	California Native
Trees + Trellis	CHAPARRAL CLEMATIS	<i>Clematis lasiantha</i>	20' long	California Native
Grasses	CANYON PRINCE WILD RYE	<i>Leymus condensatus 'Canyon Prince'</i>	3'x4'	California Native
Grasses	DEERGRASS	<i>Muhlenbergia Rigens</i>	3'x3'	California Native
Grasses	SAN DIEGO SEDGE	<i>Carex spissa</i>	5'x4'	California Native
Grasses	LITTLE BLUESTEM	<i>Schizachyrium scoparium</i>	3'x3'	North America, Not California Native
Grasses	JUNEGRASS	<i>Koeleria macrantha</i>	2'x2'	California Native
Grasses	SAND DUNE SEDGE	<i>Carex pansa</i>	12" tall	California Native
Grasses	CLUSTERED FIELD SEDGE	<i>Carex praegracilis</i>	8"x3'	California Native
Mid-level Shrubs	SUNSET MANZANITA	<i>Arctostaphylos 'Sunset'</i>	3'x6'	California Native
Mid-level Shrubs	CREME BRULEE AGAVE	<i>Agave quiengola</i>	4'x5'	Mexico
Mid-level Shrubs	APACHE PLUME	<i>Fallugia paradoxa</i>	4'x4'	California Native
Mid-level Shrubs	BLADDERPOD	<i>Peritoma arborea</i>	4'x5'	California Native
Mid-level Shrubs	WHITE SAGE	<i>Salvia apiana</i>	5'x4'	California Native
Mid-level Shrubs	COYOTE BRUSH	<i>Baccharis pilularis</i>	5'x6'	California Native
Mid-level Shrubs	SANTA RITA PRICKLY PEAR	<i>Opuntia santa-rita</i>	6'x8'	California Native
Mid-level Shrubs	BLACK SAGE	<i>Salvia mellifera</i>	4'x8'	California Native
Tall Shrubs + Screens	MOUNTAIN MAHOGANY	<i>Cercocarpus betuloides</i>	15'x10'	California Native
Tall Shrubs + Screens	HOLLY-LEAFED CHERRY	<i>Prunus ilicifolia</i>	20'x10'	California Native
Tall Shrubs + Screens	MOCK ORANGE	<i>Philadelphus lewisii</i>	8'x8'	California Native
Tall Shrubs + Screens	TOYON	<i>Heteromeles Arbutifolia</i>	10'x8'	California Native
Tall Shrubs + Screens	GREENBARK CEANOTHUS	<i>Ceanothus spinosus</i>	20'x10'	California Native
Tall Shrubs + Screens	DESERT LAVENDER	<i>Condea emoryi</i>	8'x8'	California Native
Tall Shrubs + Screens	LEMONADE BERRY	<i>Rhus integrifolia</i>	10'x8'	California Native
Tall Shrubs + Screens	KNIFE-LEAF WATTLE	<i>Acacia cultriformis</i>	15'x15'	Australia
Wildflowers + Low Shrubs	HUMMINGBIRD SAGE	<i>Salvia spathacea</i>	2'x4'	California Native
Wildflowers + Low Shrubs	BLUE ELF ALOE	<i>Aloe 'Blue Elf'</i>	2'x18"	South Africa
Wildflowers + Low Shrubs	ISLAND ALUM ROOT	<i>Heuchera maxima</i>	14"x30"	California Native
Wildflowers + Low Shrubs	CALIFORNIA FUCHSIA	<i>Epilobium canum</i>	2'x3'	California Native
Wildflowers + Low Shrubs	CALIFORNIA POPPY	<i>Eschscholzia californica</i>	15"x15"	California Native
Wildflowers + Low Shrubs	CONEJO BUCKWHEAT	<i>Eriogonum crocatum</i>	18"x3'	California Native
Wildflowers + Low Shrubs	RAILING INDIGO BUSH	<i>Dalea greggii</i>	2'x6'	Southwest US, Mexico
Wildflowers + Low Shrubs	WILD MARIGOLD	<i>Baileya multiradiata</i>	18"x3'	California Native