



Existing Entrance Signs



Inverted Fountain



Sycamore and Redwood Allee'

Landscape Features Mimicking Nature

Brick and Natural Stone Elements

Campus Entryway - A Vibrant Edge

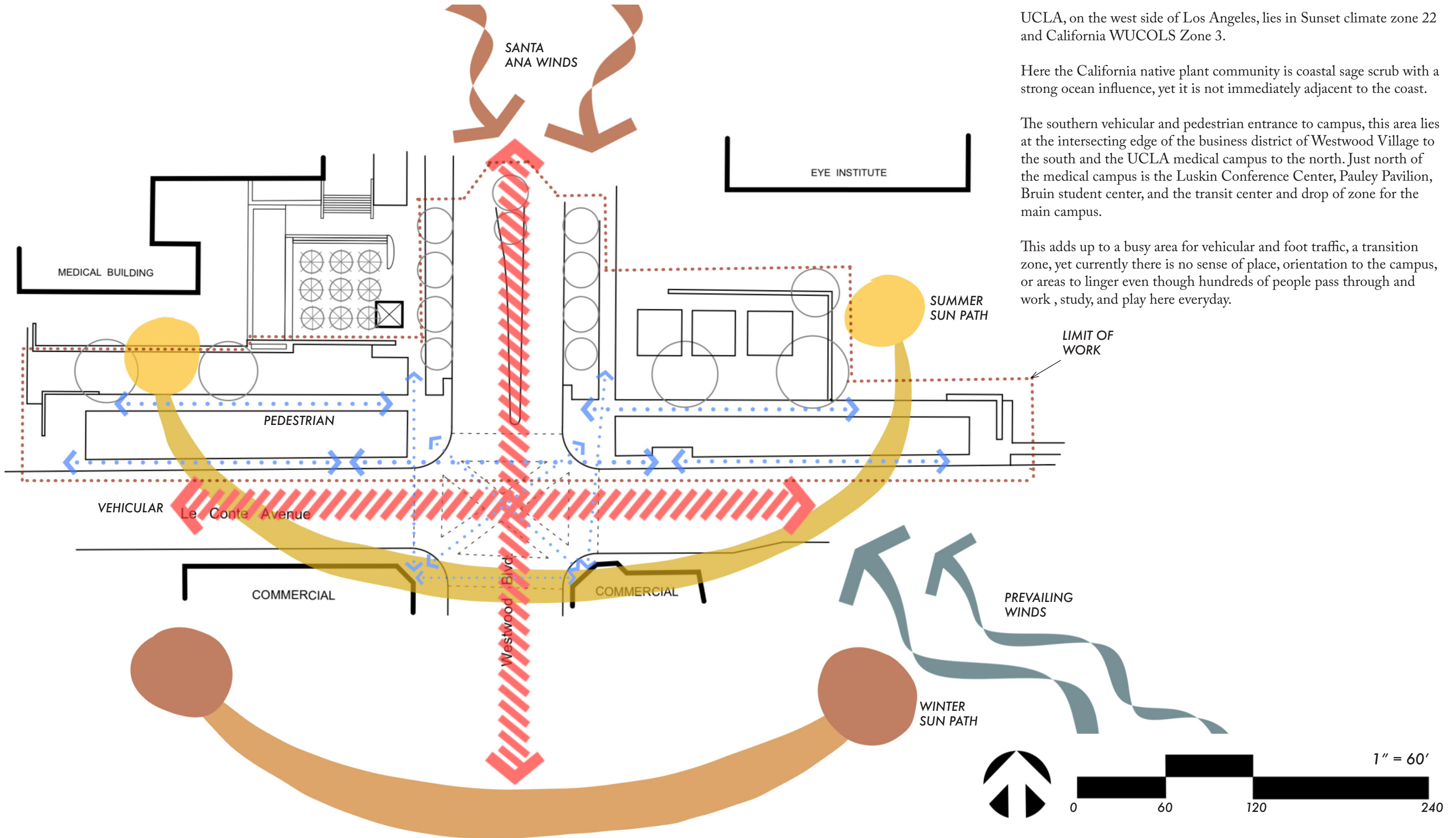
The main entrance to the south side of UCLA's campus, the intersection of Le Conte Ave. and Westwood Blvd., lacks an obvious visual cue as well as spaces for people to rest and interact in this busy edge between the university and Westwood Village.



Existing Planting and Fountain Style



Site Analysis and Area Use



UCLA, on the west side of Los Angeles, lies in Sunset climate zone 22 and California WUCOLS Zone 3.

Here the California native plant community is coastal sage scrub with a strong ocean influence, yet it is not immediately adjacent to the coast.

The southern vehicular and pedestrian entrance to campus, this area lies at the intersecting edge of the business district of Westwood Village to the south and the UCLA medical campus to the north. Just north of the medical campus is the Luskin Conference Center, Pauley Pavilion, Bruin student center, and the transit center and drop of zone for the main campus.

This adds up to a busy area for vehicular and foot traffic, a transition zone, yet currently there is no sense of place, orientation to the campus, or areas to linger even though hundreds of people pass through and work, study, and play here everyday.

Bubble Diagram



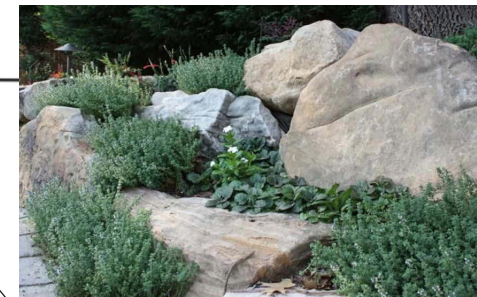
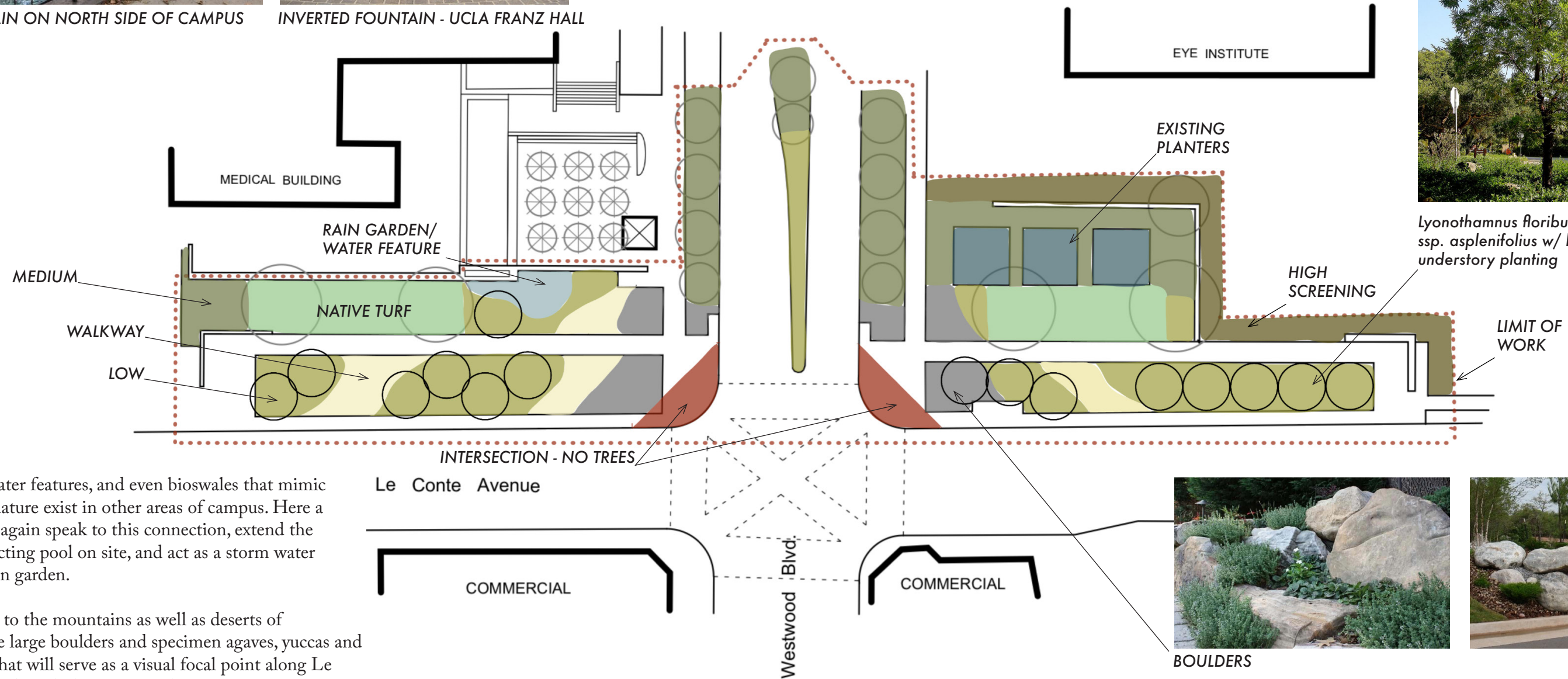
FOUNTAIN ON NORTH SIDE OF CAMPUS



INVERTED FOUNTAIN - UCLA FRANZ HALL



Lyonothamnus floribundus
ssp. *asplenifolius* w/ low
understory planting



BOULDERS



Fountains, water features, and even bioswales that mimic California's nature exist in other areas of campus. Here a fountain can again speak to this connection, extend the modern reflecting pool on site, and act as a storm water managing rain garden.

Another nod to the mountains as well as deserts of California are large boulders and specimen agaves, yuccas and wildflowers that will serve as a visual focal point along Le Conte Ave. and mark the main southern entrance to campus.

A grove and linear row of Catalina Ironwood mimics other areas of campus that employ this design technique. Here a Southern California species that is well suited to this sunny and hot site with urban heat and southern exposure is used.



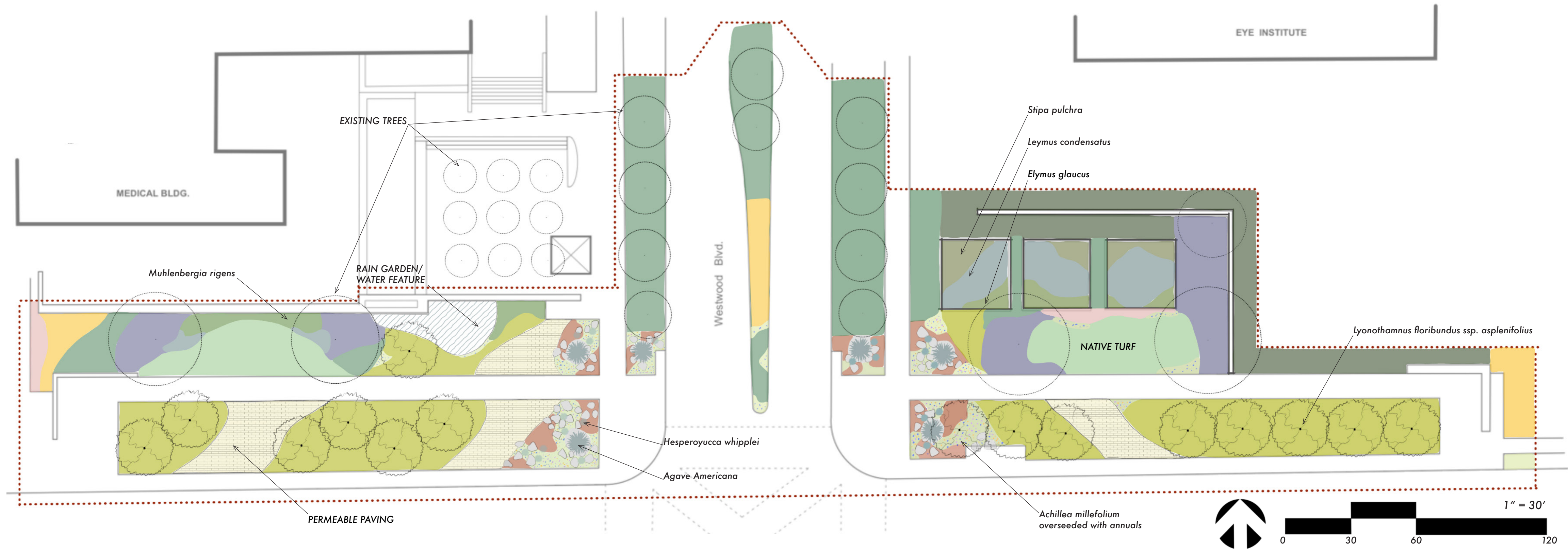
Planting Concept

GROUNDCOVER

- Achillea millefolium*
- Arctostaphylos edmundsii*
'Carmel Sur'
- Baccharis pilularis*
'Twin Peaks'
- Bouteloua gracilis* 'UC Verde'
- Ceanothus hearstiorum*
- Eriogonum fasciculatum*
'Bruce Dickinson'
- Eriogonum fasciculatum*
'Warriner Lytle'

SHRUBS

- Encelia californica*
- Heteromeles arbutifolia*



Plant Palette



BOTANIC NAME	COMMON NAME	WIDTH & HEIGHT in FT.	WUCOLS ZONE 3	ORIGIN
1 <i>Arctostaphylos edmundsii</i> 'Carmel Sur'	Carmel Sur Manzanita	6' x 1.5'	L	California
2 <i>Baccharis pilularis</i> 'Twin Peaks'	Coyote Brush	8' x 1.5'	L	California
3 <i>Bouteloua gracilis</i> 'UC Verde'	UC Verde Buffalo Grass	1' x 1.5'	L	California
4 <i>Ceanothus hearstiorum</i>	Hearst's Ceanothus	6' x 1'	L	California
5 <i>Eriogonum fasciculatum</i> 'Bruce Dickinson'	California Buckwheat	6' x 1.5'	VL	California
6 <i>Eriogonum fasciculatum</i> 'Warriner Lytle'	California Buckwheat	5' x 1.5'	VL	California
7 <i>Encelia californica</i>	Coast Sunflower	4' x 3'	L	California
8 <i>Heteromeles arbutifolia</i>	Toyon	15' x 11'	VL	California
9 <i>Elymus glaucus</i>	Blue Wildrye	1' x 2'	L	California
10 <i>Leymus condensatus</i>	Giant Wild Rye	6' x 4.5'	L	California
11 <i>Stipa pulchra</i>	Purple Needlegrass	1.5' x 3'	VL	California
12 <i>Hesperoyucca whipplei</i>	Chaparral Yucca	3' x 8'	VL	California
13 <i>Agave Americana</i>	Century Plant	10' x 9'	VL	Mexico
RAIN GARDEN				
14 <i>Achillea millefolium</i>	Common Yarrow	2.5' x 1.5'	L	California
15 <i>Juncus patens</i>	California Grey Rush	2' x 2'	L	California
16 <i>Muhlenbergia rigens</i>	Deer Grass	2.5' x 3'	L	California
ANNUALS				
17 <i>Phacelia viscida</i>	Sticky Phacelia	3' X 3'	VL	California
18 <i>Eschscholzia californica</i>	California Poppy	1.5' X 2'	VL	California
19 <i>Lupinus succulentus</i>	Arroyo Lupine	2' X 2'	L	California
TREES				
20 <i>Lyonothamnus floribundus</i> <i>ssp. asplenifolius</i>	Fern-leaf Catalina Ironwood	25' x 40'	L	California