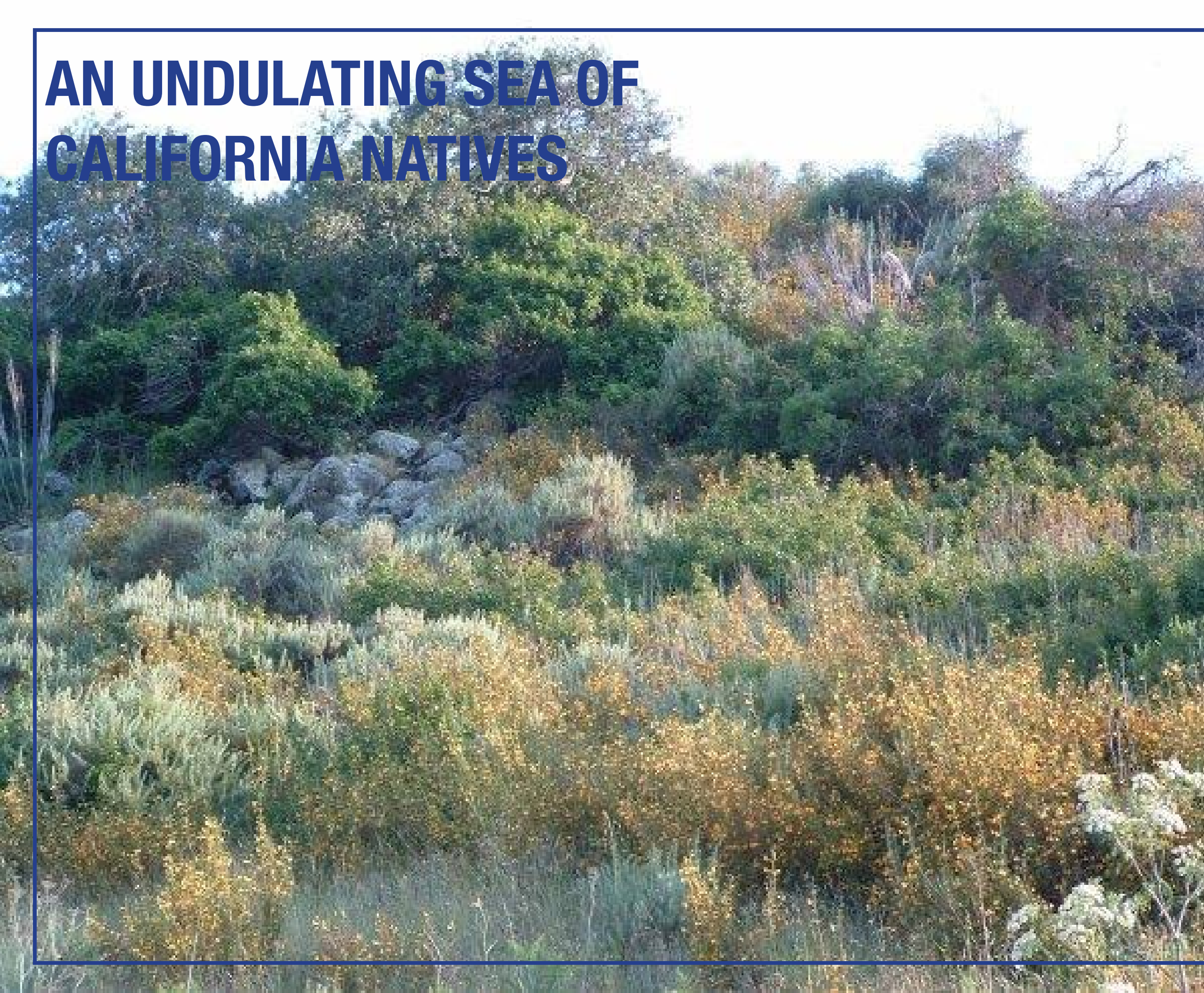


# AN UNDULATING SEA OF CALIFORNIA NATIVES



JULIA BENNETT  
LANDSCAPE DESIGN 5  
UCLAx SPRING  
MAY 24, 2023

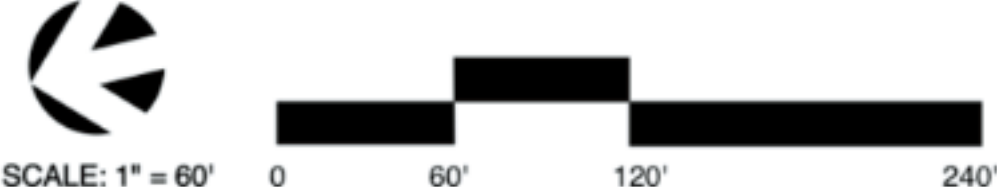
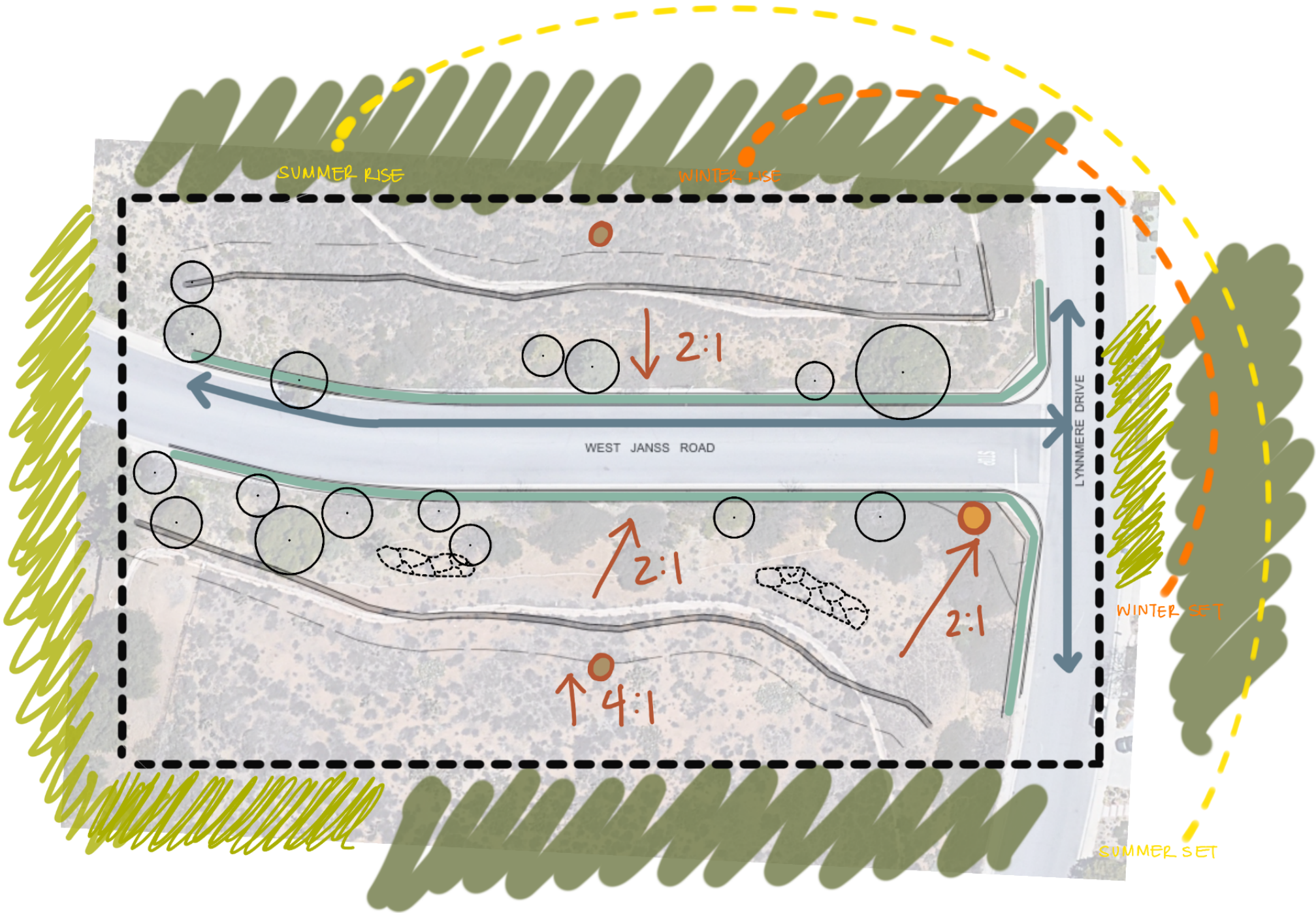
# SITE ANALYSIS

CURRENT PLANT COMMUNITIES

- OPUNTIA LITTORALIS
- OPUNTIA PROLIFERA
- ARTEMISIA CALIFORNICA
- CEANOTHUS
- RIBES
- BACCHARIS
- ARCOSTAPHYLOS

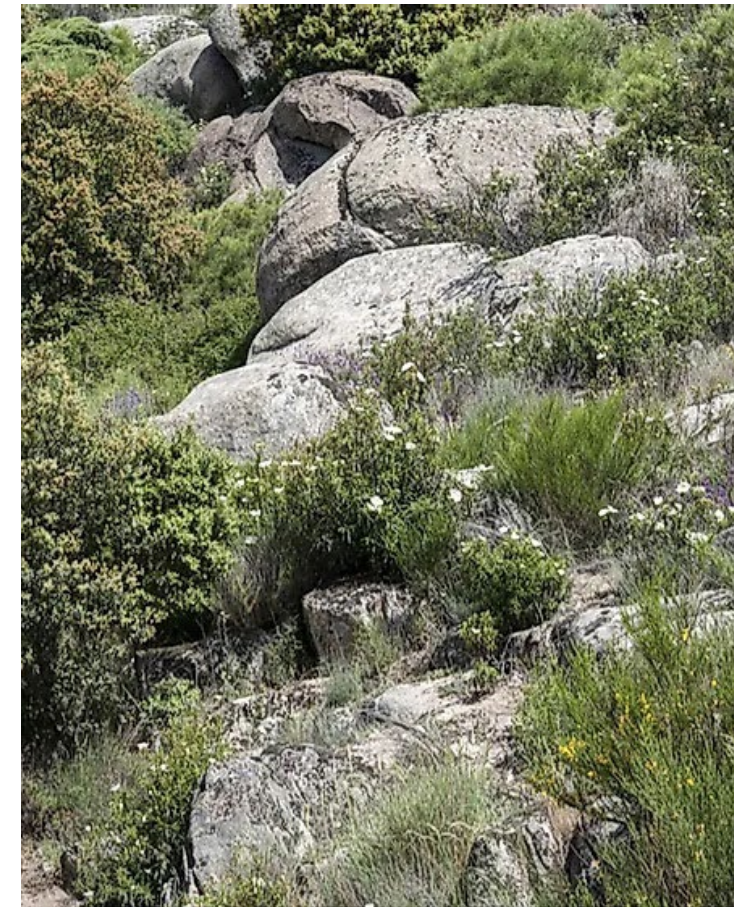
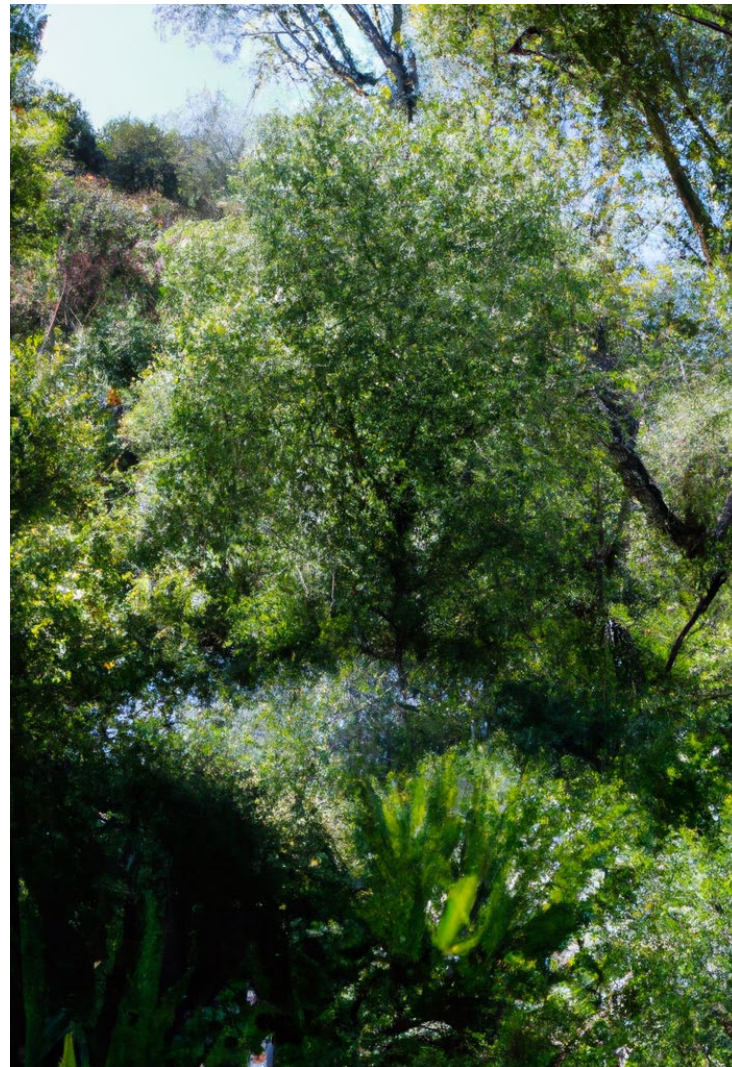
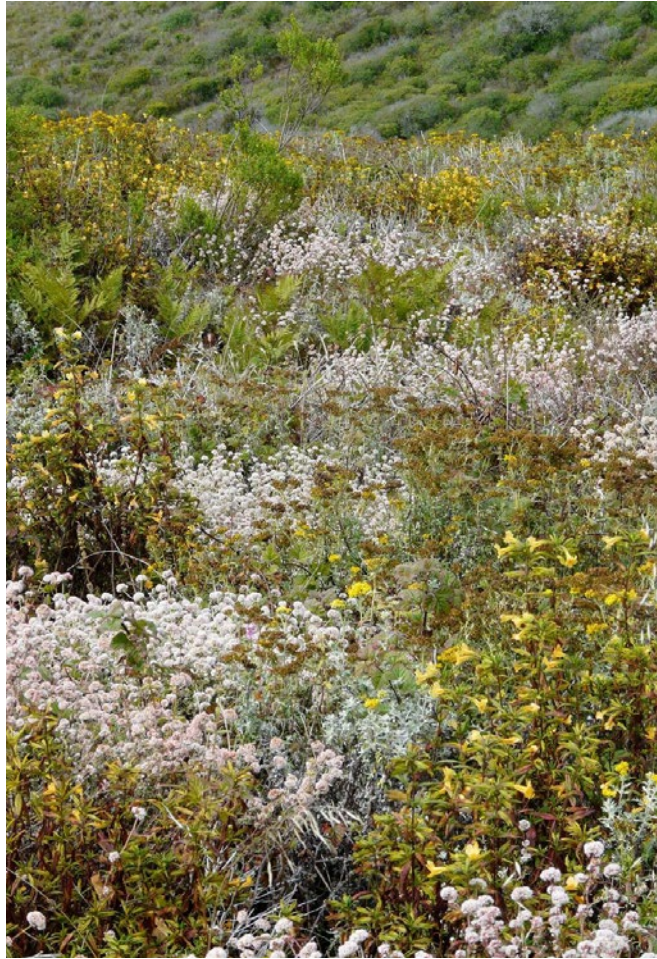
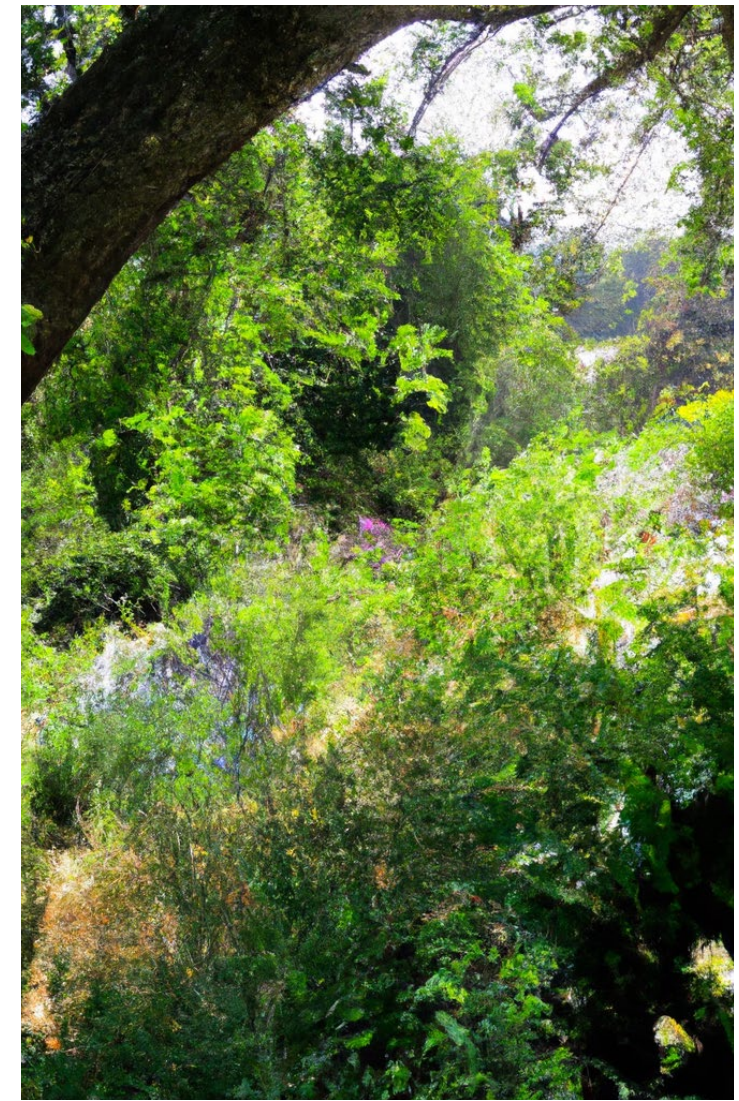
LEGEND

- HIGH POINT
- LOW POINT
- VEHICULAR CIRC.
- PED. CIRC.
- █ RESIDENTIAL EDGE
- █ OPEN SPACE EDGE
- SITE BOUNDARY
- EXISTING TREE
- ROCK OUTCROP





# CONCEPT INSPIRATION

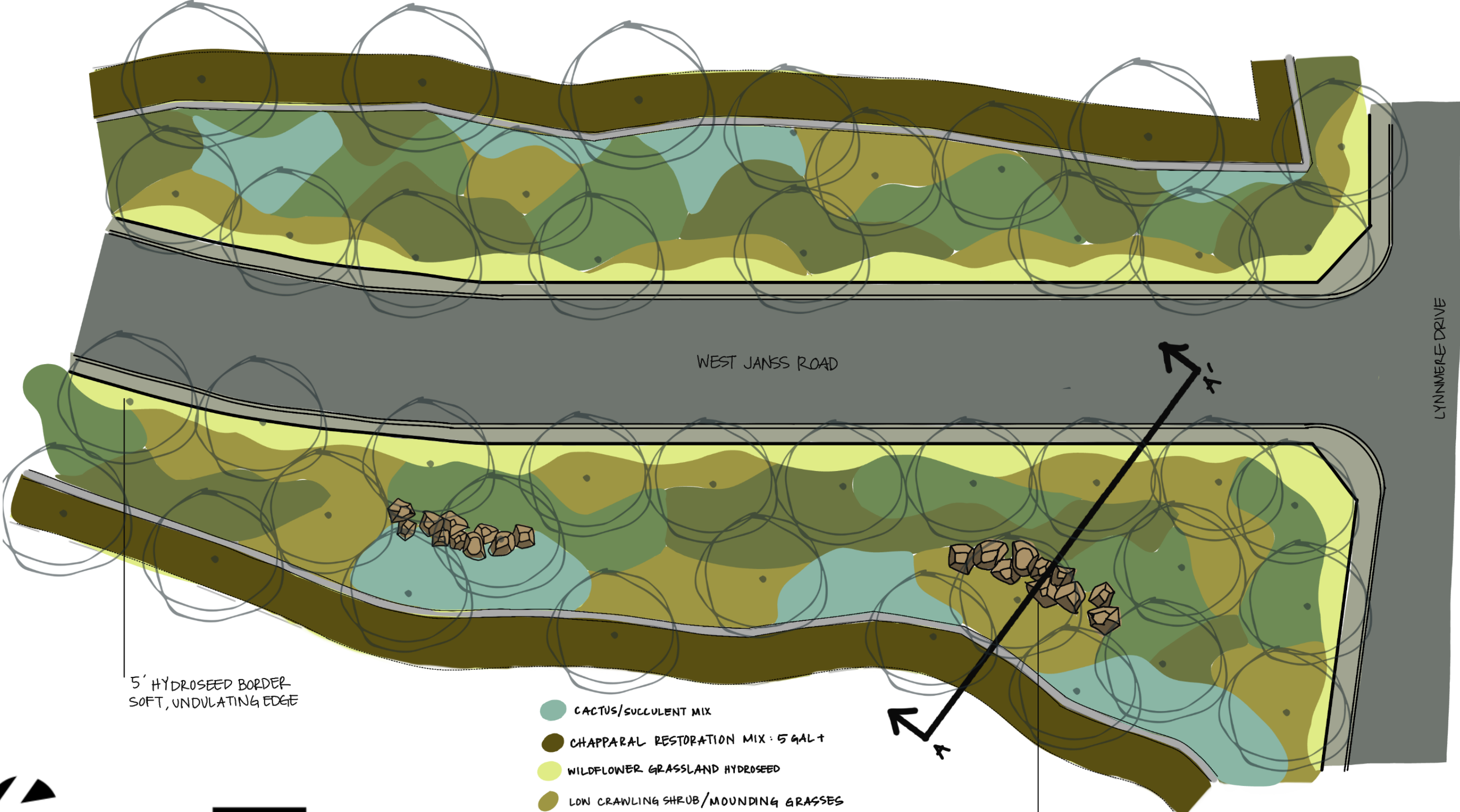


- Shade/Microclimate Creation
- Gradients of Height/Texture
- Habitat Restoration
- Erosion Control
- Color/Sensory Interest
- Interwoven, overlapping forms of chaparral mountain ranges



# SITE CONCEPT

CHAPPARAL MOUNTAIN FORMS



LYNNMERE DRIVE

WEST JANS S ROAD

5' HYDROSEED BORDER  
SOFT, UNDULATING EDGE

- CACTUS/SUCCULENT MIX
- CHAPPARAL RESTORATION MIX: 5 GAL+
- WILDFLOWER GRASSLAND HYDROSEED
- LOW CRAWLING SHRUB/MOUNDING GRASSES
- HIGH SHRUBS/SMALL TREES
- FLOWERING MID-HEIGHT SHRUBS

ROCK OUTCROP  
\* NON-PLANTING AREA



SCALE: 1" = 30'

0 30' 60' 120'



# PLANT PALETTE

## NATIVE TREES



CALIFORNIA JUNIPER  
*Juniperus californica*



HOLLYLEAF CHERRY  
*Prunus ilicifolia*



CALIFORNIA LAUREL  
*Umbellularia californica*



COAST LIVE OAK  
*Quercus agrifolia*

## CACTUS/SUCCULENT MIX



CHAPPARAL YUCCA  
*Hesperoyucca whipplei*



COAST PRICKLY PEAR  
*Opuntia littoralis*



CHALK DUDLEYA  
*Dudleya pulverulenta*

## HIGH SHRUBS/SMALL TREES



CALIFORNIA BUCKEYE 'CANYON PINK'  
*Aesculus californica* 'Canyon Pink'



CHAMISE  
*Adenostoma fasciculatum*



EASTWOOD MANZANITA  
*Arcostaphylos glandulosa*



TOYON  
*Heteromeles arbutifolia*

## FLOWERING MID-HEIGHT SHRUBS



CLEVELAND SAGE  
*Salvia clevelandii*



LOUIS HAMILTON DESERT MALLOW  
*Sphaeralcea ambigua* 'Louis Hamilton'



WARRINER LYTLE BUCKWHEAT  
*Eriogonum fasciculatum* 'Warriner Lytle'



COYOTE BUSH  
*Baccharis pilularis*



HILLSIDE GOOSEBERRY  
*Ribes californicum*

## WILDFLOWER/GRASSLAND HYDROSEED



WINE CUP CLARKIA  
*Clarkia purpurea*



GOLDEN YARROW  
*Eriophyllum confertiflorum*



CALIFORNIA POPPY  
*Eschscholzia californica*



CUCAMONGA BROME  
*Bromus carinatus*

## LOW CRAWLING SHRUB/MOUNDING GRASS



CANYON PRINCE WILD RYE  
*Leymus condensatus* 'Canyon Prince'



CANYON GRAY SAGEBRUSH  
*Artemisia californica* 'Canyon Gray'



JOJOBA  
*Simmondsia chinensis*



CEANOTHUS 'YANKEE POINT'  
*Ceanothus thyrsiflorus* var. *griseus*



BLUE GRAMA GRASS  
*Bouteloua gracilis*



ARROYO LUPINE  
*Lupinus succulentus*




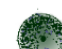








FOOTHILL NEEDLEGRASS  
*Stipa lepida*

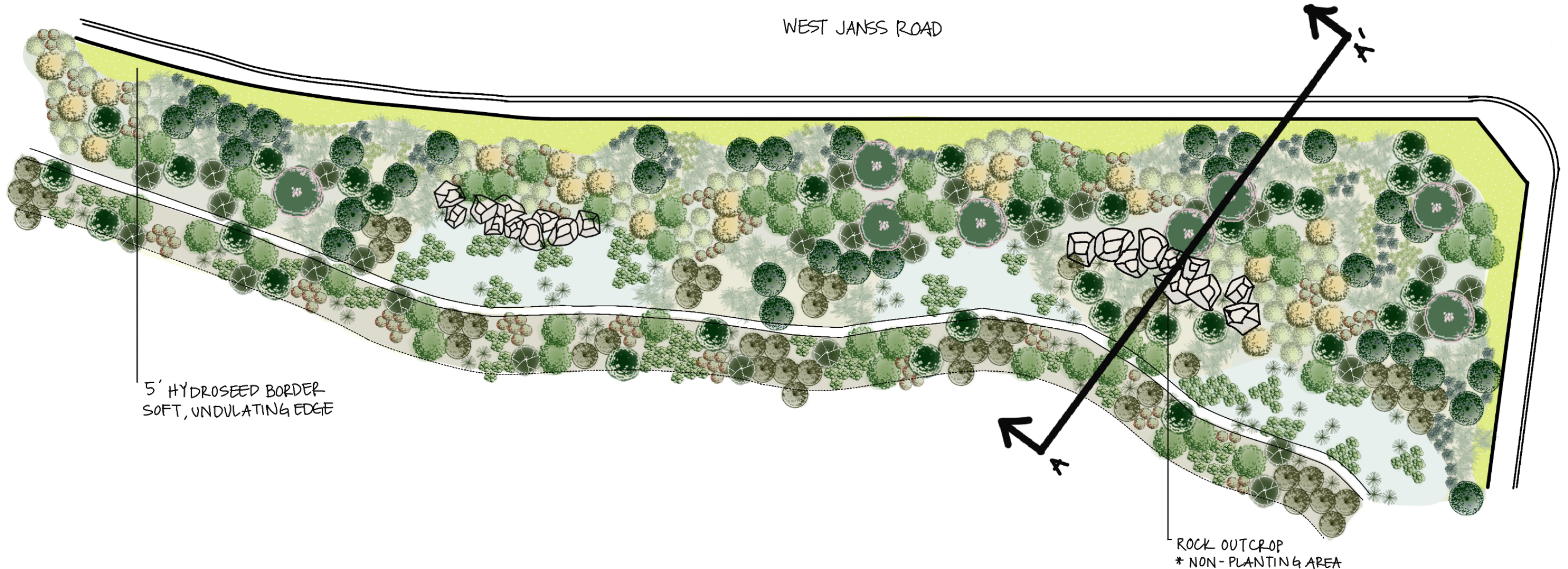
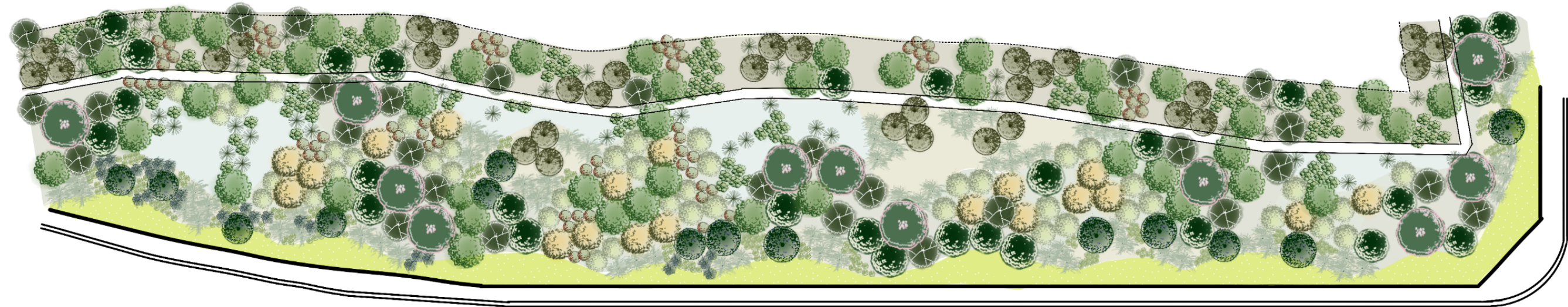


COMMON NAME SCIENTIFIC NAME	FAMILY NAME	MATURE HEIGHT/ SPREAD	WUCOLS FACTOR	SUMMER WATER REDUX.	WILDLIFE BENEFIT	SOIL REQUIREMENTS	BLOOM COLOR/ SEASON	MAINTENANCE REQUIREMENTS
CALIFORNIA JUNIPER <i>Juniperus californica</i>	Cupressaceae	Height: 10-25' Width: 20'	Very Low < 10% ET <sub>0</sub> Plant Factor: < 0.10	Max 1x/month once established		Coarse DG low nutrient to medium drainage soils	N/A	No understory planting in a garden, prune in winter
HOLLYLEAF CHERRY <i>Prunus ilicifolia</i>	Rosaceae	Height: 5-40' Width: 5-20'	Very Low < 10% ET <sub>0</sub> Plant Factor: < 0.10	Max 2x/month once established		Tolerates a variety of soils, coarse well draining	Winter/Spring Cream, White, Purple	Takes pruning well, cut in late fall
CALIFORNIA LAUREL <i>Umbellularia californica</i>	Lauraceae	Height: 6-80' Width: 3-30'	Low 10-30% ET <sub>0</sub> Plant Factor: 0.10-0.30	Max 3x/month once established		Tolerates variety of soil, medium slow draining	Spring Yellow, White, Green	Limit understory planting
COAST LIVE OAK <i>Quercus agrifolia</i>	Fagaceae	Height: 25-82' Width: 15-35'	Low 10-30% ET <sub>0</sub> Plant Factor: 0.10-0.30	Max 1x/month once established		Variety of soil, prefers deep well draining loam	Spring/Winter Yellow, Cream, Green	Prune in summer months, sterilize pruning tools.
CHAPPARAL YUCCA <i>Hesperoyucca whipplei</i>	Agavaceae (now Asparagaceae)	Height: 3-4' Width: 3-4'	Very Low < 10% ET <sub>0</sub> Plant Factor: < 0.10	Max 1x/month once established		Rocky, sandy, well drainign soil	Spring/Summer White to Lilac	May need to be removed after flowering.
COAST PRICKLY PEAR <i>Opuntia littoralis</i>	Cactaceae	Height: 3-4' Width: 3-4' (clumping)	Very Low < 10% ET <sub>0</sub> Plant Factor: < 0.10	Max 1x/month once established		Variable, sandyand loam textures,	Spring Golden or Pink	Full Sun, tolerates rugged conditions, low maintenance
CHALK DUDLEYA <i>Dudleya pulverulenta</i>	Crassulaceae	Height: 0.3-1' Width: 1'	Very Low < 10% ET <sub>0</sub> Plant Factor: < 0.10	Max 1x/month once established		Variable , rocky coarse soils on slope preferred	Spring/Summer Orange, Pink, Red	Remove spent stalks
'CANYON PINK' CALIFORNIA BUCKEYE	Sapindaceae	Height: 15' Width: 15'	Low 10-30% ET <sub>0</sub> Plant Factor: 0.10-0.30	Max 1x/month once established		Sand - clay, medium drainage	Spring Pink	Tolerates pruning
CHAMISE <i>Adenostatum fasticulatum</i>	Rosaceae	Height: 3-10' Width: 1-8'	Very Low < 10% ET <sub>0</sub> Plant Factor: < 0.10	Max 2x/month once established		Sandy or clay, medium drainage	Spring/Summer White	Can be kept fire resistant with occasional watering
EASTWOOD MANZANITA <i>Dudleya pulverulenta</i>	Ericaceae	Height: 3-12' Width: 8'	Very Low < 10% ET <sub>0</sub> Plant Factor: < 0.10	Max 2x/month once established		Gravelly, decomposed granite soil	Winter/Spring Pink, White	Plant in spring, tolerates part shade
TOYON <i>Hetermolese arbutifolia</i>	Rosaceae	Height: 6-30' Width: 10-15'	Very Low < 10% ET <sub>0</sub> Plant Factor: < 0.10	Max 2x/month once established		Tolerates all soil types	Spring/Summer Insignificant	Can cut to the ground and it will regrow from the base
CLEVELAND SAGE <i>Salvia clevelandii</i>	Lamiaceae	Height: 3-5' Width: 8'	Very Low < 10% ET <sub>0</sub> Plant Factor: < 0.10	Never irrigate once established		Sand - clay, medium drainage	Spring/Summer Blue-Purple	Fall pruning, can deadhead during bloom to encourage more flowers
LOUIS HAMILTON DESERT MALLOW <i>Sphaeralcea ambigua 'Louis Hamilton'</i>	Malvaceae	Height: 2-3' Width: 2-3'	Low 10-30% ET <sub>0</sub> Plant Factor: 0.10-0.30	Y/N - can bloom year round with summer water		Sand - clay, medium drainage	Spring/Summer Bright Red-Orange	Perennial, hard prune after bloom to encourage new growth
'WARRINER LYTTLE' BUCKWHEAT <i>Erigonum fasciculatum 'Warriner Lyttle'</i>	Polygonaceae	Height: 1-2' Width: 5-10'	Very Low < 10% ET <sub>0</sub> Plant Factor: < 0.10	Max 2x/month once established		Prefers well draining soil, tolerant of other types	Spring/Summer/Fall White	Can handle hard pruning, can be edged or hedged
COYOTE BUSH <i>Baccharis pilularis</i>	Asteraceae	Height: 2-10' Width: 12'	Very Low < 10% ET <sub>0</sub> Plant Factor: < 0.10	Max 1x/month once established		Tolerates all soil conditions	All Season White - Cream - Yellow	Prune annually to control shape and spread.
HILLSIDE GOOSEBERRY <i>Ribes californicum</i>	Grossulariaceae	Height: 3-8' Width: 2-6'	Low 10-30% ET <sub>0</sub> Plant Factor: 0.10-0.30	Max 1x / month once established		Sand - clay, medium drainage	Winter/Spring Purple - Pink - Yellow	Contains spines
CANYON PRINCE WILD RYE <i>Leymus condensatus 'Canyon Prince'</i>	Poaceae	Height: 2-3' Width: 4-6'	Low 10-30% ET <sub>0</sub>	Max 2x/month once established		Sand - clay, medium drainage	Spring/Summer Rhizomes	Cut to the ground in summer if it gets unruly
CANYON GRAY SAGEBRUSH <i>Artemisia californica 'Canyon Gray'</i>	Asteraceae	Height: 1-2' Width: 4-6'	Very Low < 10% ET <sub>0</sub> Plant Factor: < 0.10	Max 2x / month once established		Prefers fast draining soils, tolerant of all soil types	Summer/Fall Inconspicuous	Summer deciduous, heavily trim every 1-2 yrs.
JOJOBA <i>Simmondsia chinensis</i>	Simmondsiaceae	Height: 3-7' Width: 4-7'	Very Low < 10% ET <sub>0</sub> Plant Factor: < 0.10	Little irrigation once established		Fast draining soils	Spring Yellow/Cream	Very tolerant of pruning or shearing
CEANOTHUS 'YANKEE POINT' <i>Ceanothus 'Yankee Point'</i>	Rhamnaceae	Height: 2-3' Width: 8-10'	Low 10-30% ET <sub>0</sub> Plant Factor: 0.10-0.30	Max 2x / month once established		Prefers fast/medium draining soils	Winter/Spring Dark Blue	Takes pruning well to promote dense form and vigor
BLUE GRAMA GRASS <i>Bouteloua gracilis</i>	Poaceae	Height: 1' Width: 1'	Low 10-30% ET <sub>0</sub> Plant Factor: 0.10-0.30	Max 2x / month once established		Adapted to various soils, well draining preferred	Summer White-Brown	Look best with more than typical water.



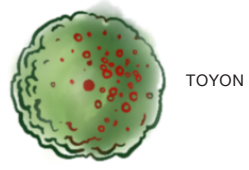
# SITE PLAN - SHRUBS

-  WILDFLOWER HYDROSEED
-  CANYON PRINCE WILD RYE
-  CANYON GREY ARTEMISIA
-  JOJOBA
-  YANKEE POINT CEANOTHUS
-  BLUE GRAMA GRASS
-  CHAPPARAL YUCCA
-  COAST PRICKLY PEAR
-  CLEVELAND SAGE
-  HILLSIDE GOOSEBERRY
-  BACCHARIS
-  'LOUIS HAMILTON' DESERT MALLOW
-  'WARRINER LYTLE' CALIFORNIA BUCKWHEAT
-  CHAMISE
-  'CANYON PINK' CALIFORNIA BUCKEYE

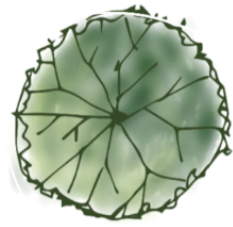




# SITE PLAN - TREES



TOYON



COAST LIVE OAK



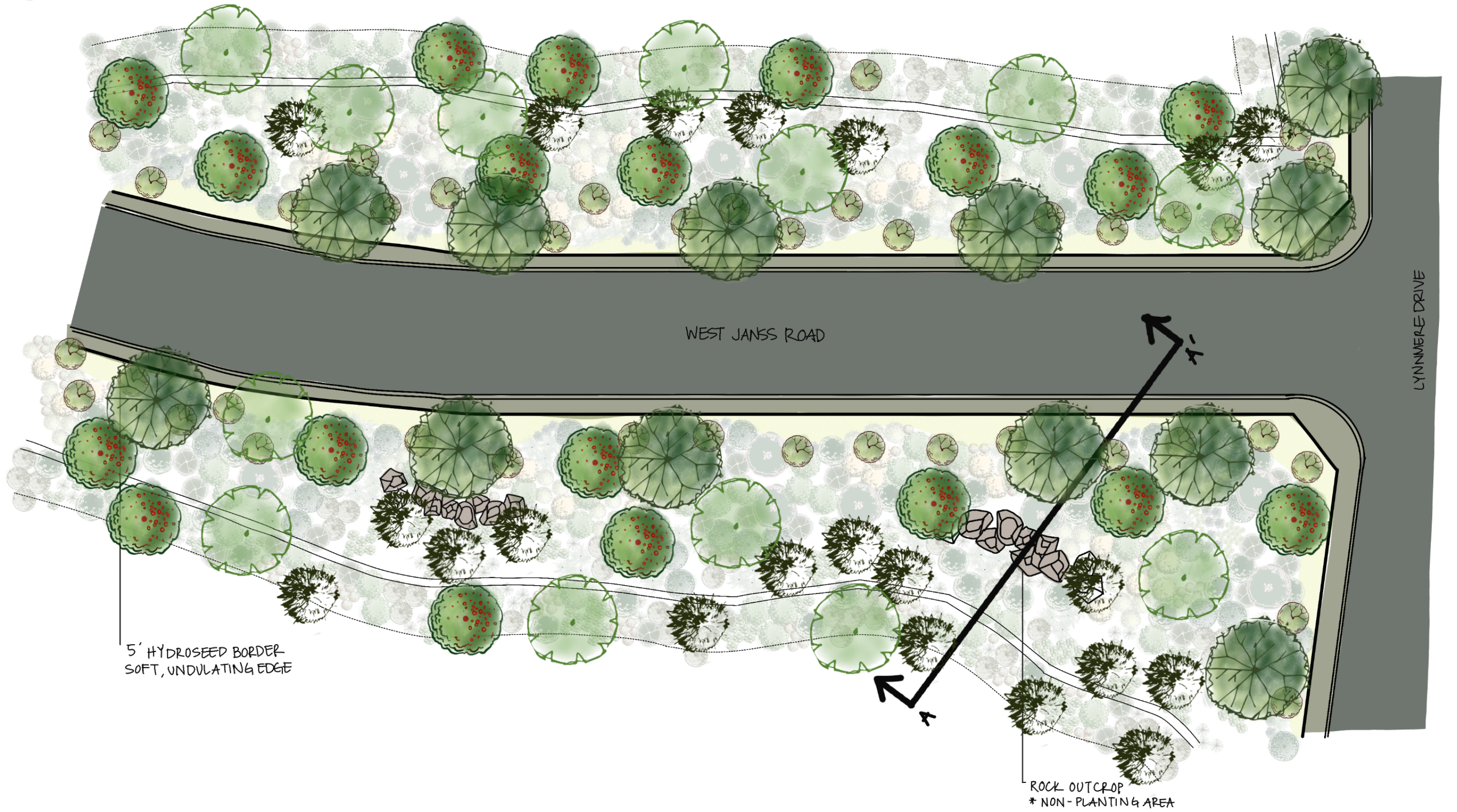
CALIFORNIA LAUREL



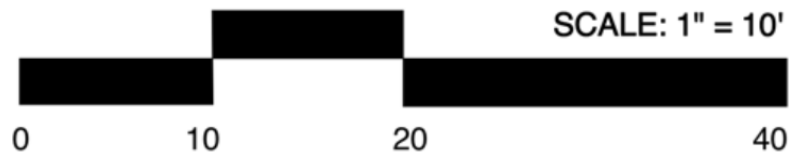
EASTWOOD MANZANITA



CALIFORNIA JUNIPER







NAME: JULIA BENNETT  
 DATE: 05-17-2023

UCLA Landscape Architecture Extension Program - Spring 2022  
 score: \_\_\_\_\_ of 15

**PLANTING DESIGN**  
**Weekly Assignment #3**  
**Slope Section & Plant Graphics**

DRAW THE SLOPE SECTION ALONG THE SECTION LINE SHOWN ON THE PROJECT #2 INSTRUCTIONS PLAN. GRAPHICS SHALL BE DRAWN FREEHAND. THE GRID CONSISTS OF 5' SQUARES. REMEMBER TO SHOW STREET, SIDEWALK AND CURB AT THE BOTTOM AND THE DITCH AND 4:1 SLOPE DISTURBED AREA AT THE TOP. INCLUDE ENTOURAGE ELEMENTS - PEOPLE OR A CAR AS SCALE ELEMENTS. USE PEN OR PENCIL OR ANY COMBINATION OF BOTH. FOR EXAMPLE DRAW THE SLOPE WITH INK FOR EMPHASIS AND RENDER PLANT ELEVATIONS WITH PENCIL. COLOR IS OPTIONAL.

RENDER 1 EVERGREEN TREE, 1 DECIDUOUS TREE AND 3 SHRUBS IN ELEVATION. USE SPECIFIC PLANTS AND LABEL THEM WITH BOTANIC NAMES. THIS ASSIGNMENT IS NOT SIMPLY A GRAPHICS EXERCISE - THINK OF THESE SKETCHES AS A TOOL TO VISUALIZE PROPOSED PLANT SIZES, SHAPES AND TEXTURES AS PART OF THE PROCESS FOR PROJECT #2.

