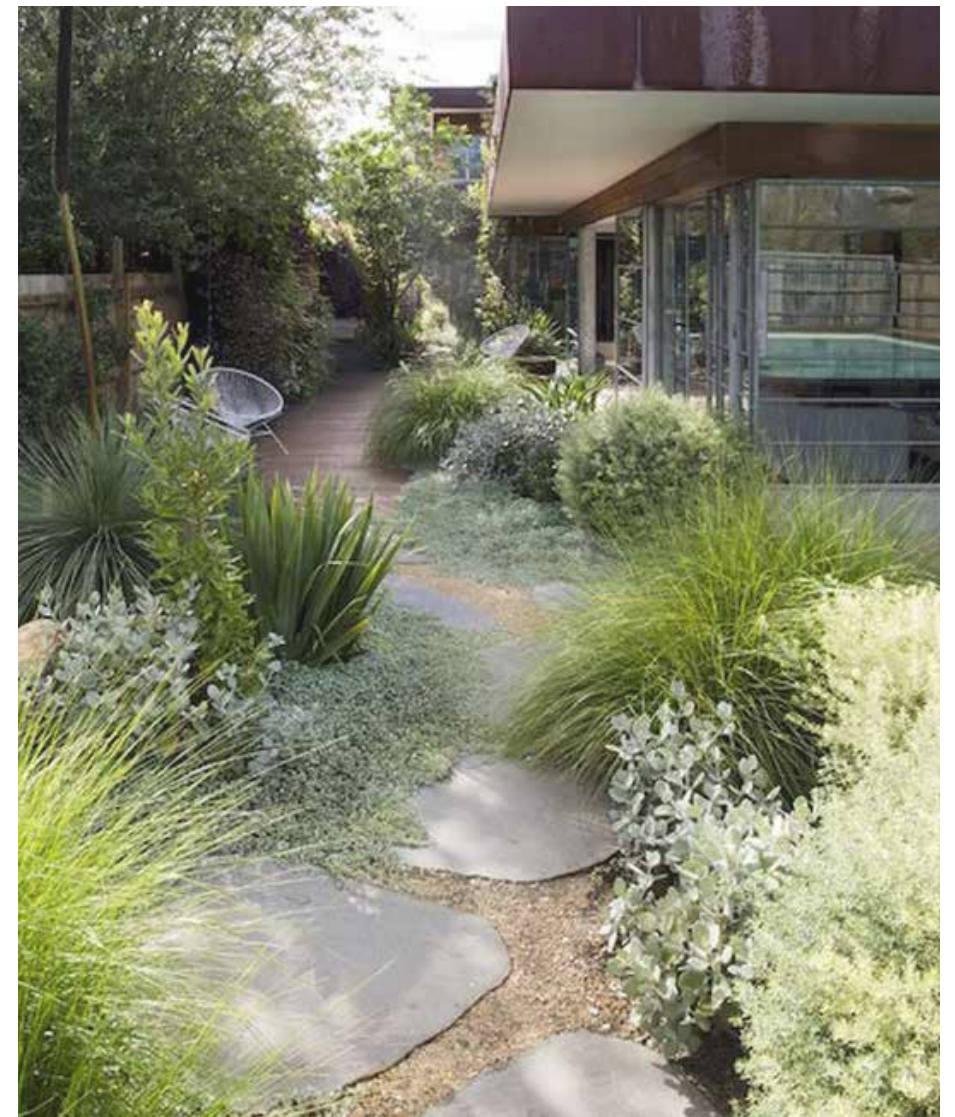


Planting Design
1834 16th Street, Santa Monica CA, 90404

Heather Wu
Planting Design - LD5
UCLA Extension
Pamela Brief
Spring 2023



INSPIRATION

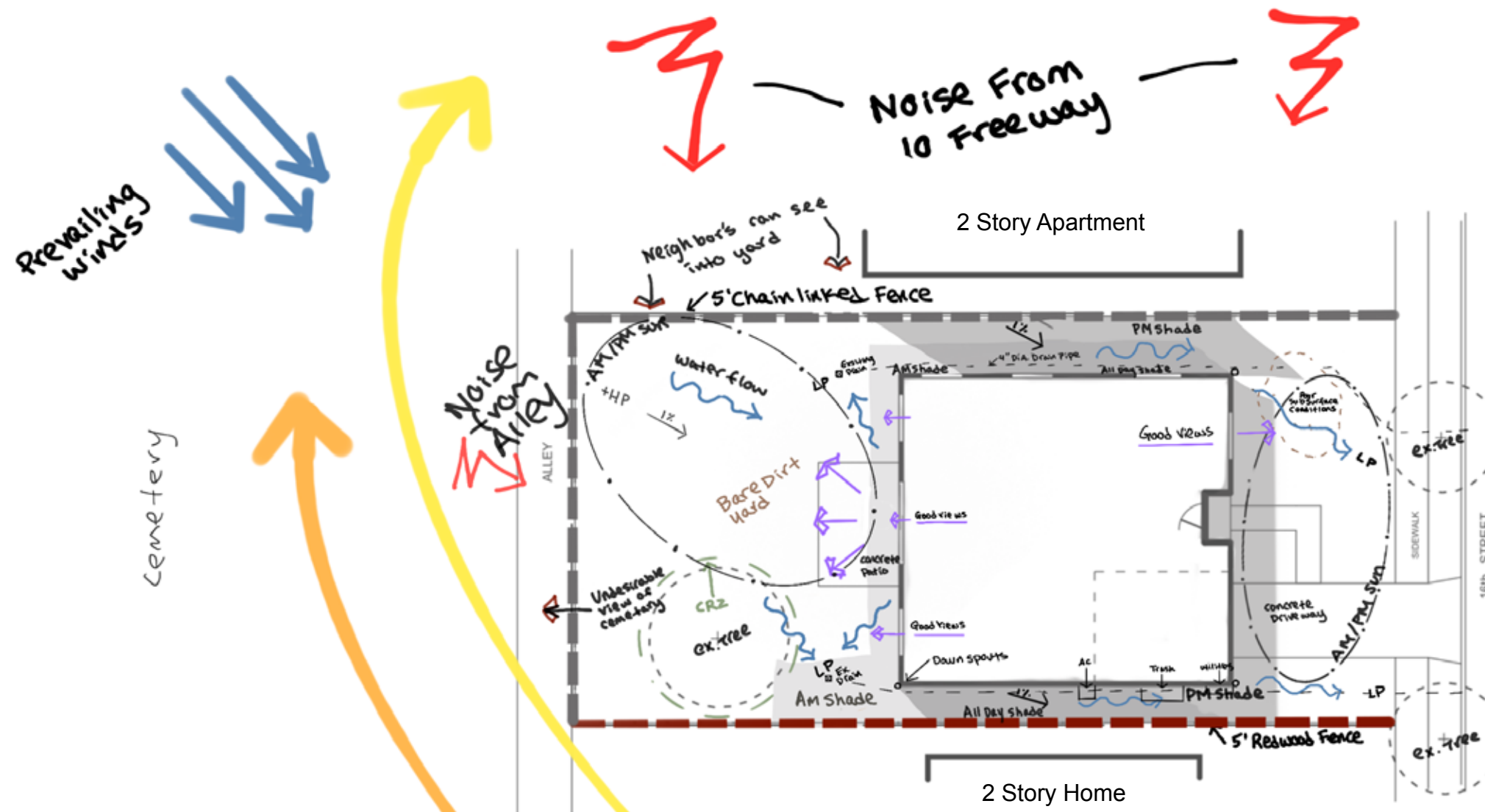


A garden that provides interest for more than just the eyes. The planting plan and garden design was inspired to bring peace and activity to the young family and their love to spend time outside. Pops of color, purple, yellow, blue and white come from an array of flowering shrubs and plants. Curiosity lurks at every corner, what will bloom next, who will the blooms bring? Majority of plants provide pleasant aromas and many are edible or medicinal, providing a sensory experiences for all.

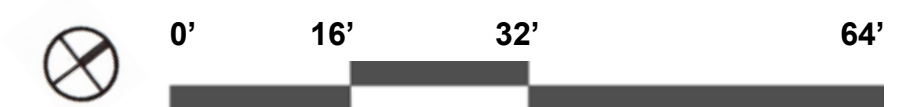
SITE ANALYSIS

LEGEND

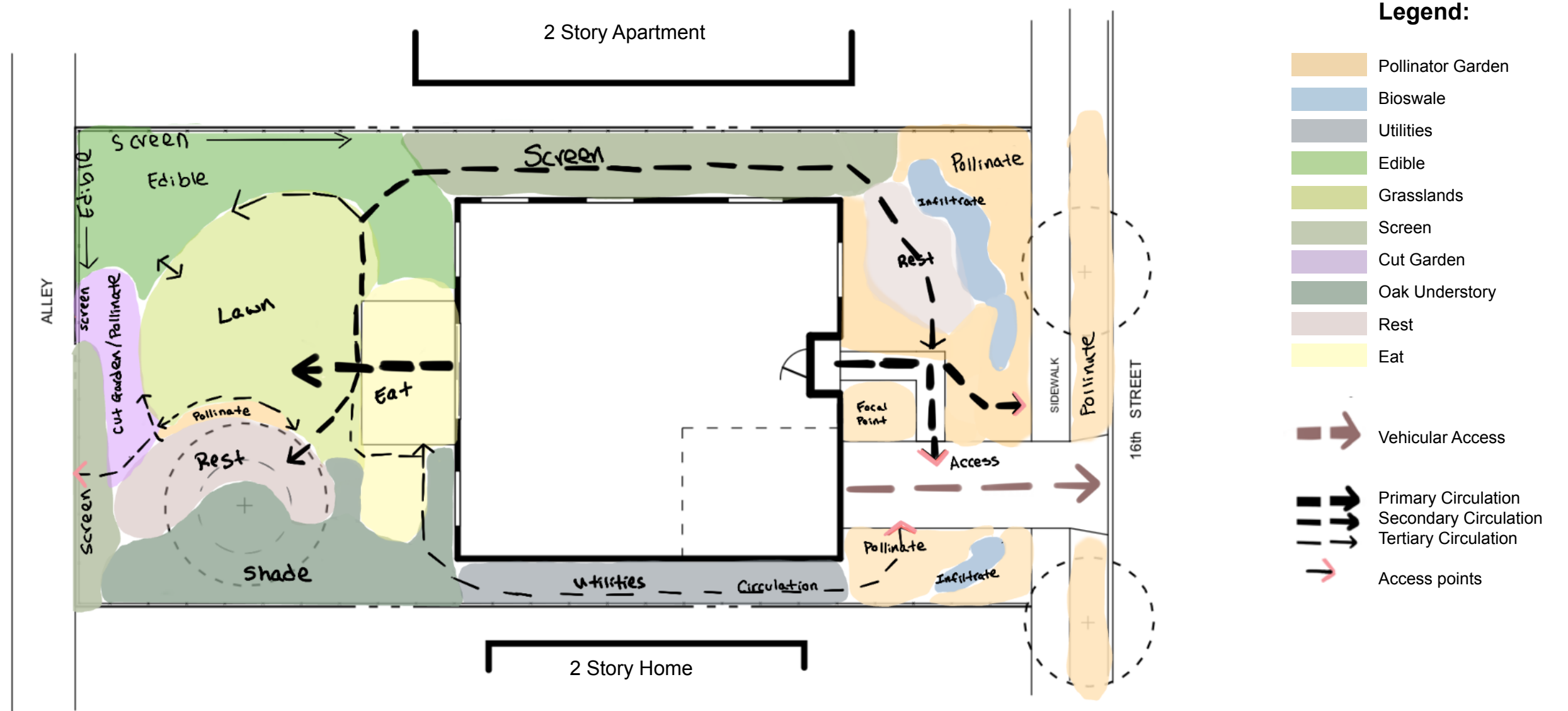
- Chainlink Fence
- Redwood Fence
- Sun Area
- Critical Root Zone
- Subsurface Conditions
- Drain Line
- Sound
- Water flow
- Good Views
- Bad Views
- Slope
- High Point
- Low Point
- Downspout
- Drain
- PM Shadow
- AM Shadow
- Summer Sun Path
- Winter Sun Path



Sunset Zone: 24
Hardiness Zone: 10b



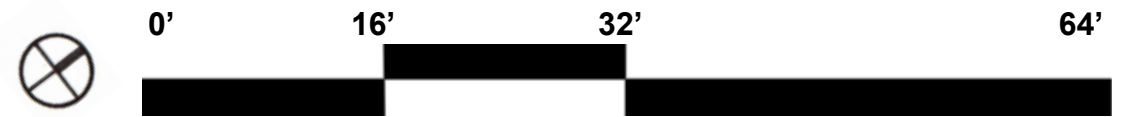
BUBBLE DIAGRAM



Legend:

- Pollinator Garden
- Bioswale
- Utilities
- Edible
- Grasslands
- Screen
- Cut Garden
- Oak Understory
- Rest
- Eat

- Vehicular Access
- Primary Circulation
- Secondary Circulation
- Tertiary Circulation
- Access points



PLANTING CONCEPT

The Edible Garden consist of Dragon Fruit Vine over the alleyway fence, Citrus Tree screening the apartments next door, Vegetable planters near compost site. Compost Bin and Storage Shed is also located in this area.

Lawn area with California Native *Agrostis pallens* as base, Deer grass, Pink Muhly act as accents on edges with boulders providing natural play areas for dog and daughter.

Shade Garden with Passionfruit trellis, Hummingbird sage, Pitcher Sage growing below providing an amazing fragrant path way.

The front yard is a native pollinator garden with a seating area with boulders and a bioswale. The focal point of the front entry are two beautifully structured Howard McMinn Manzanitas, surrounded by flowering fragrant plants, shades of purple, yellow blue and white pop through out the seasons. Cleveland Sage, Bee's Bliss Sage, Verbena Del Le Mina, California Sunflower, Bladder Pod, California Buckwheat, and Blue flame agave add color and some structural interest when flowers are not in bloom. There is a Blue Elder Berry situated on the north corner of the lot. The view out from the living window showcases a feast to the eyes of color and wafts of fragrance from sages.

Legend:

L - Low
M - Medium
T - Tall
V - Vine

- Pollinator Garden
- Bioswale
- Shade Garden
- Vegetable, Herb, Orchard
- Grasslands
- Screen
- Cut Garden
- Oak Understory

Matilija Poppy hedge behind cut garden bringing large blooms during late spring which can be used indoors, foliage also acts as stunning screen, when not in bloom.

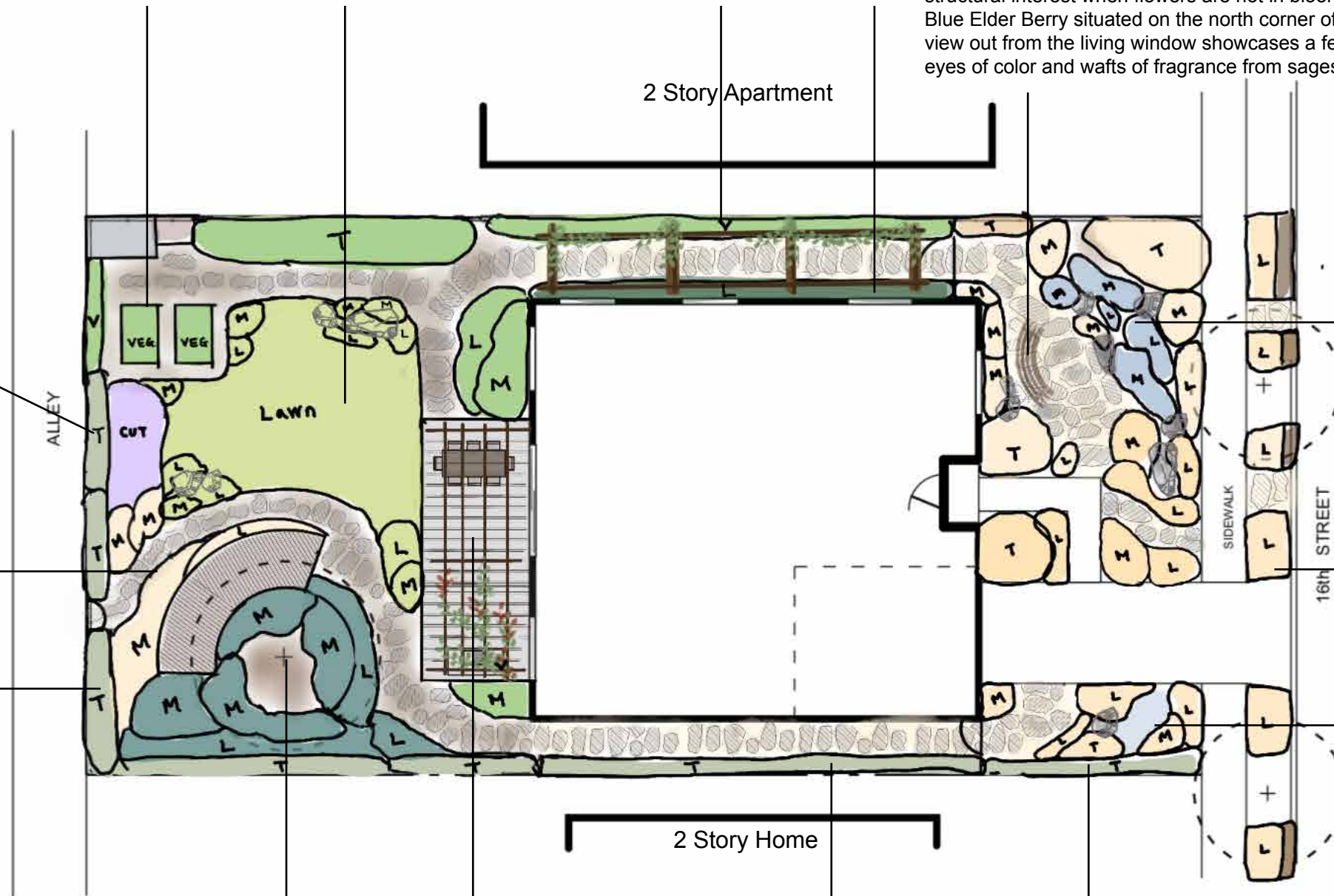
Native fragrant plants line the walk way to the back alley, also screening in elevated yoga/ mediation deck which is nestled under the oak, surrounded by Woolly Blue curls, Cleveland sage, Catalina Perfume, Hummingbird Sage.

Screen made up of a combination of Ceanothus and Lemonade Berry, bringing seasonal color and providing food for animals and insects.

The bioswale is in the pollinator garden, it contain an array of flowering shrubs and grasses that change color and interest throughout the seasons. Common Rush, Yerba Mansa deep in the bioswale, ready for days of heavy rain. Deer grass, Golden Rods, Douglas Iris sprinkled around the other edges of the bioswale, blending in with the pollinator garden that surrounds it

Parking way is planted with Pigeon Point Coyote Brush, providing a hardy no mow ground cover that may require the occasionally pruning as it may spread out of the desired planting area. Coyote brush can be trimmed back to providing a step off strip on edge of parkway.

Native pollinator garden/ bioswale continues on driveway portion of front yard, with a Western Bud as the focal point, surrounded by Deergrass, Verbena De La Mina, and Golden Rods.



Coast Live Oak under story planting made up of Hummingbird Sage, Pitcher Sage, Catalina Perfume, Lemonade Berry, layered from shortest plant to the tallest as the screen of neighboring 2 story home. The combination creates a wild, but visually pleasing area.

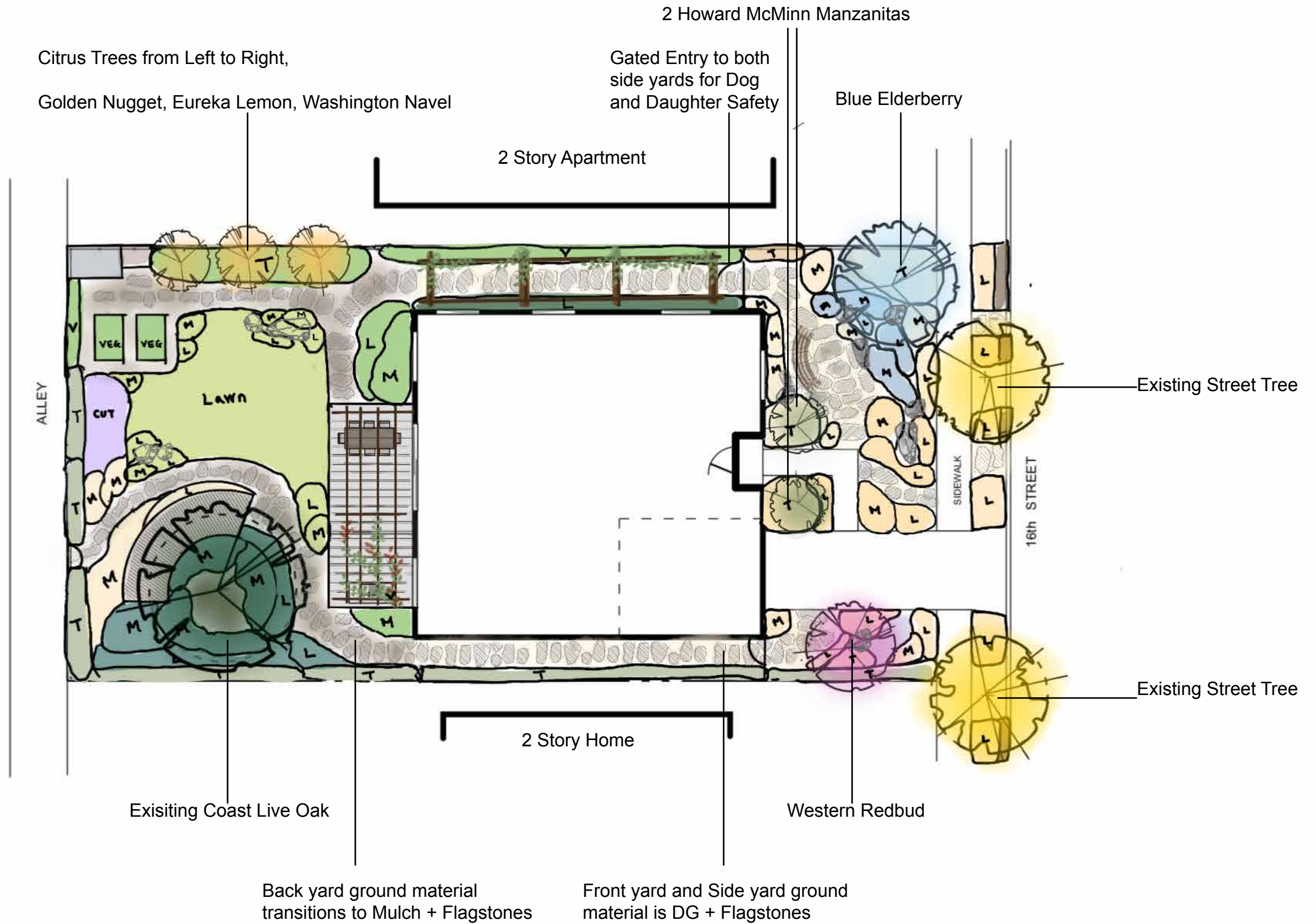
Shaded Patio with Passion Fruit Vine climbing the shade structure, surrounded by two herb gardens. (I.e. Lemongrass, Lavender by dining table, Rosemary by the BBQ.)

Lemonade Berry Screen continues

Ceanothus Screen



PLANTING CONCEPT - WITH TREES



PLANT SELECTION

Oak Understory

- 1 *Salvia spathacea*
Hummingbird Sage
- 2 *Lepechinia fragrans*
Fragrant Pitcher Sage
- 3 *Ribes viburnifolium*
Catalina Perfume
- 4 *Trichostema lanatum*
Woolly Bluecurls



Screen

- 5 *Rhus integrifolia*
Lemonade Berry
- 6 *Ceanothus thyrsiflorus*
Blueblossom Ceanothus
- 7 *Romneya coulteri*
Coulter's Matilija Poppy



Bioswale

- 8 *Solidago confinis*
Southern Goldenrod
- 9 *Muhlenbergia rigens*
Deergrass
- 10 *Juncus patens*
Common Rush
- 11 *Anemopsis californica*
Yerba Mansa
- 12 *Iris douglasiana*
Douglas Iris



PLANT SELECTION

Pollinator Garden

13	<i>Encelia californica</i> California Bush Sunflower
14	<i>Salvia</i> x 'Bee's Bliss' Bee's Bliss Sage
15	<i>Baccharis pilularis</i> ssp. <i>pilularis</i> 'Pigeon Point' Pigeon Point Coyote Brush
16	<i>Sambucus mexicana</i> Blue Elderberry
17	<i>Cercis occidentalis</i> Western Redbud
18	<i>Agave</i> 'Blue Flame' Blue Flame Agave
19	<i>Verbena lilacina</i> 'De La Mina' De La Mina Verbena
20	<i>Eriogonum fasciculatum</i> California Buckwheat
21	<i>Salvia clevelandii</i> Cleveland Sage
22	<i>Arctostaphylos</i> 'Howard McMinn' Howard McMinn Manzanita
23	<i>Peritoma arborea</i> Bladder Pod



Grass Lands

24	<i>Muhlenbergia Capillaris</i> Pink Muhly
25	<i>Agrostis pallens</i> Thinggrass



PLANT SELECTION

Edible Garden

- | | |
|----|--|
| 26 | <i>Hylocereus guatemalensis</i> X <i>Hylocereus undatus</i> 'Physical Graffiti'
Physical Graffiti
Dragon Fruit |
| 27 | <i>Passiflora edulis</i>
Passion Fruit |
| 28 | <i>Citrus reticulata</i>
Gold Nugget Mandarin |
| 29 | <i>Citrus x limon</i> 'Eureka'
Eureka Lemon |
| 30 | <i>Citrus x sinensis</i> 'Washington'
Washington Navel
Orange |



PLANT LIST

REF NO.	BOTANIC/ COMMON NAME:	FAMILY:	HEIGHT AND SPREAD	WUCOLS RATING	SWR	SOIL TYPE	BLOOM COLOR & SEASON	# OF SUPPORTED WILDLIFE
OAK UNDERSTORY & SHADE	1	<i>Salvia spathacea</i> Hummingbird Sage	Lamiaceae H: 1-3' S: 3'	VL	Yes	Well Drained	Pink/ Red - Winter - Summer	10
	2	<i>Lepechinia fragrans</i> Fragrant Pitcher Sage	Lamiaceae H: 3-5' S: 3-5'	L	Yes	Well Drained	Lavender Purple - Spring - Fall	3
	3	<i>Ribes viburnifolium</i> Catalina Perfume	Grossulariaceae H: 2-3' S: 8'	VL	Yes	Well Drained	Purple, Pink, Red - Winter - Spring	37
	4	<i>Trichostema lanatum</i> Woolly Bluecurls	Lamiaceae H: 1-5' S: 2-10'	VL	Yes	Well Drained	Blue, Lavender, Pink - Winter - Summer	14
SCREENS	5	<i>Rhus integrifolia</i> Lemonade Berry	Anacardiaceae H: 3- 30' S: 3-20'	VL	Yes	Well Drained - Sandy / Gravel	Pink/ White Winter - Spring	14
	6	<i>Ceanothus thyrsiflorus</i> Blueblossom Ceanothus	Rhamnaceae H: 2 - 30' S: 2- 40'	VL	Yes	Well Drained - Sandy - Rocky	Blue, White, Green Winter - Summer	94
	7	<i>Romneya coulteri</i> Coulter's Matilija Poppy	Papaveraceae H: 6-10' S: 20'	L	Yes	Well Drained - Sandy - Rocky	White - Yellow - Late Spring - summer	2
BIOSWALE	8	<i>Solidago confinis</i> Southern Goldenrod	Asteraceae H: 1.5 - 5'	VL	Yes	Medium Drained - Sandy	Yellow - Summer- Fall	40
	9	<i>Muhlenbergia rigens</i> Deergrass	Poaceae H: 10 - 15' S: 6 - 10'	L	Yes	Well Drained - Sandy / Gravel	Yellow, Cream- Spring	2
	10	<i>Juncus patens</i> Common Rush	Juncaceae H: 1-3' S: 3'	M - H	Yes	Well Drained - Moist	Small White - Summer	5
	11	<i>Anemopsis californica</i> Yerba Mansa	Saururaceae H: 4-12" S: 1-3'	M-H	No	Well Drained - Sandy	White, Cream, Red - Winter -Spring	1
	12	<i>Iris douglasiana</i> Douglas Iris	Iridaceae H: .6 - 2.6' S: 2 - 4'	L	Yes	Slow Draining	Blue, Pink, Purple White, Yellow Winter-Spring	3
P.G.	13	<i>Encelia californica</i> California Bush Sunflower	Asteraceae H: 1- 5' S: 3-7'	VL	Yes	Well Drained	Brown, Yellow, Purple, White, Winter - Spring	4
	14	Salvia x 'Bee's Bliss' Bee's Bliss Sage	Lamiaceae H: 2' W: 6-8'	VL	Yes	Well Drained	Lavender - Spring	1

Note: Some plants are used in multiple hydrozones, note color scheme

REF NO.	BOTANIC/ COMMON NAME:	FAMILY:	HEIGHT AND SPREAD	WUCOLS RATING	SWR	SOIL TYPE	BLOOM COLOR & SEASON	# OF SUPPORTED WILDLIFE	
POLLINATOR GARDEN	15	<i>Baccharis pilularis ssp. pilularis</i> 'Pigeon Point' Pigeon Point Coyote Brush	Asteraceae	H: 1-2' S: 6-8'	L	Yes	Well Drained Rocky	Cream - Summer - Winter	29
	16	<i>Sambucus mexicana</i> Blue Elderberry	Adoxaceae	H: 20 - 30' W 20 - 30'	L	Yes	Well Drained - Sandy	Cream/ Yellow/ Purple - (Blue fruit) Spring - Summer	23
	17	<i>Cercis occidentalis</i> Western Redbud	Fabaceae	H: 10-20' S: 10- 15'	L	Yes	Well Drained	Pink, Yellow, Red - Winter - Spring	12
	18	<i>Agave</i> 'Blue Flame' Blue Flame Agave	Asparagaceae	H: 2 - 4' S: 3 - 4'	L	No	Well Drained - Sandy / Gravel	Yellow - Rarely Flowers	
	19	<i>Verbena lilacina</i> 'De La Mina' De La Mina Verbena	Verbenaceae	H: 1-2' S: 3-4'	VL	Yes	Well Drained - Sandy - Gravel	Purple - All Year	1
	20	<i>Eriogonum fasciculatum</i> California Buckwheat	Polygonaceae	H: 1-6' S: 3'	VL	Yes	Well Drained - Sandy - Gravel	Yellow, Cream, Pink, White - Spring - Fall	51
	21	<i>Salvia clevelandii</i> Cleveland Sage	Lamiaceae	H: 2-4.5' S: 8'	VL	Yes	Well Drained - Sandy - Rocky	Blue Purple Lavender - Spring Summer	7
	22	<i>Arctostaphylos</i> 'Howard McMinn' Howard McMinn Manzanita	Ericaceae	H: 3- 12' S: 8'	VL	Yes	Well Drained - Sandy - Rocky	White - Pink - Winter - Spring	54
	23	<i>Peritoma arborea</i> Bladder Pod	Capparaceae	H: 1 - 6' S: 6'	VL	Yes	Well Drained - Sandy - Rocky	Yellow - all year	5
LAWN	24	<i>Muhlenbergia Capillaris</i> Pink Muhly	Poaceae	H: 2-3' S: 2-3'	L	Yes	Well Drained	Pink - Summer	
	25	<i>Agrostis pallens</i> Thingrass	Poaceae	H: .33-2' Spreading	L	Yes	Well Drained	Green - Spring	5
EDIBLES	26	<i>Hylocereus guatemalensis X Hylocereus undatus</i> 'Physical Graffiti' Physical Graffiti Dragon Fruit	Cactaceae	Vine - Spreading	L	No	Well Drained	White - Summer - Fall Harvest - May - October	
	27	<i>Passiflora edulis</i> Passion Fruit	Passifloraceae	Vine - Spreading	M	No	Well Drained	White - Purple - Summer - Autumn Harvest - Late Summer - Fall	
	28	<i>Citrus reticulata</i> Gold Nugget Mandarin	Rutaceae	H: 8' S: 8-12'	M	N	Well Drained Sandy Loam	White - Winter Spring Harvest -Spring - Summer	
	29	<i>Citrus x limon</i> 'Eureka' Eureka Lemon	Rutaceae	H: 10-20' W: 6-8'	M	No	Well Drained Sandy Loam	White - all year Harvest - All Year	
	30	<i>Citrus x sinensis</i> 'Washington' Washington Navel Orange	Rutaceae	H: 6-15' S: 8-12'	M	No	Well Drained Sandy Loam	White - Winter - Spring Harvest - December - April	

Thank you



References :
<https://calscape.org/> , <https://selecttrees.com/our-trees/> - <https://www.pinterest.com/> -<https://www.google.com/>