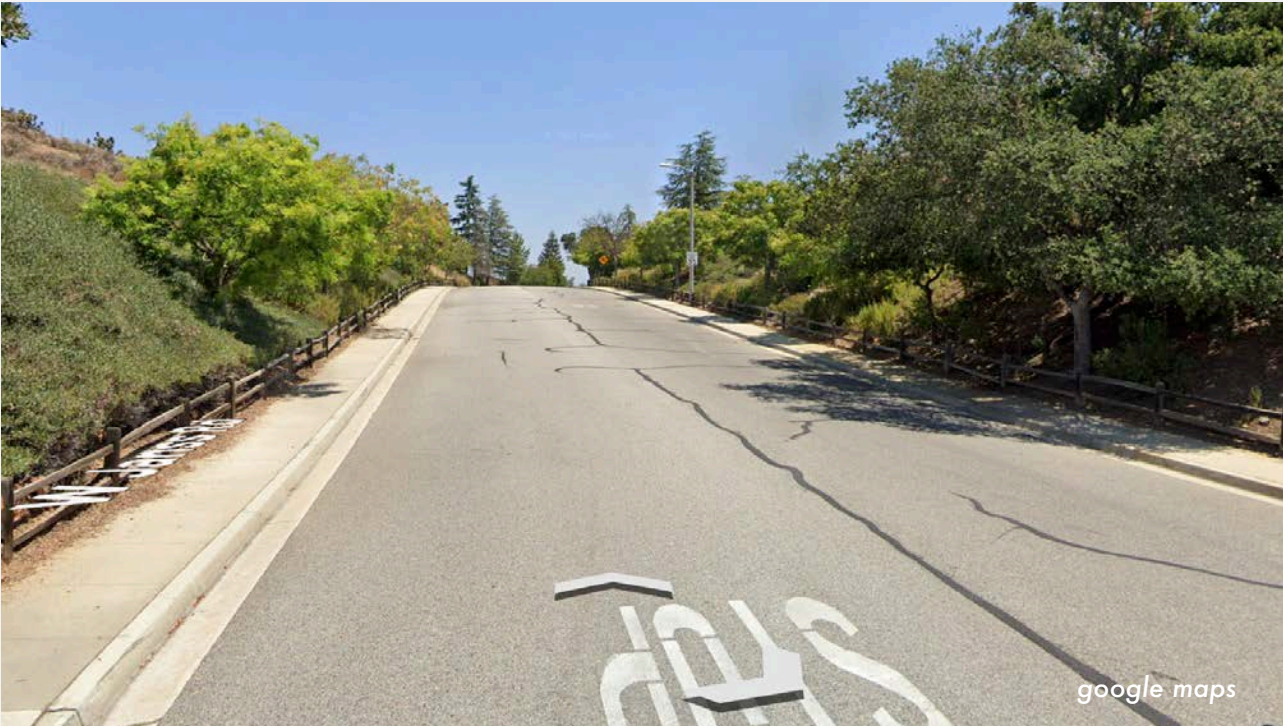


Native Plant Community



An opportunity for people and nature

The suburban - wildland interface provides an excellent opportunity to meet the needs of people, pets, wild animals, and plants all at the same time.

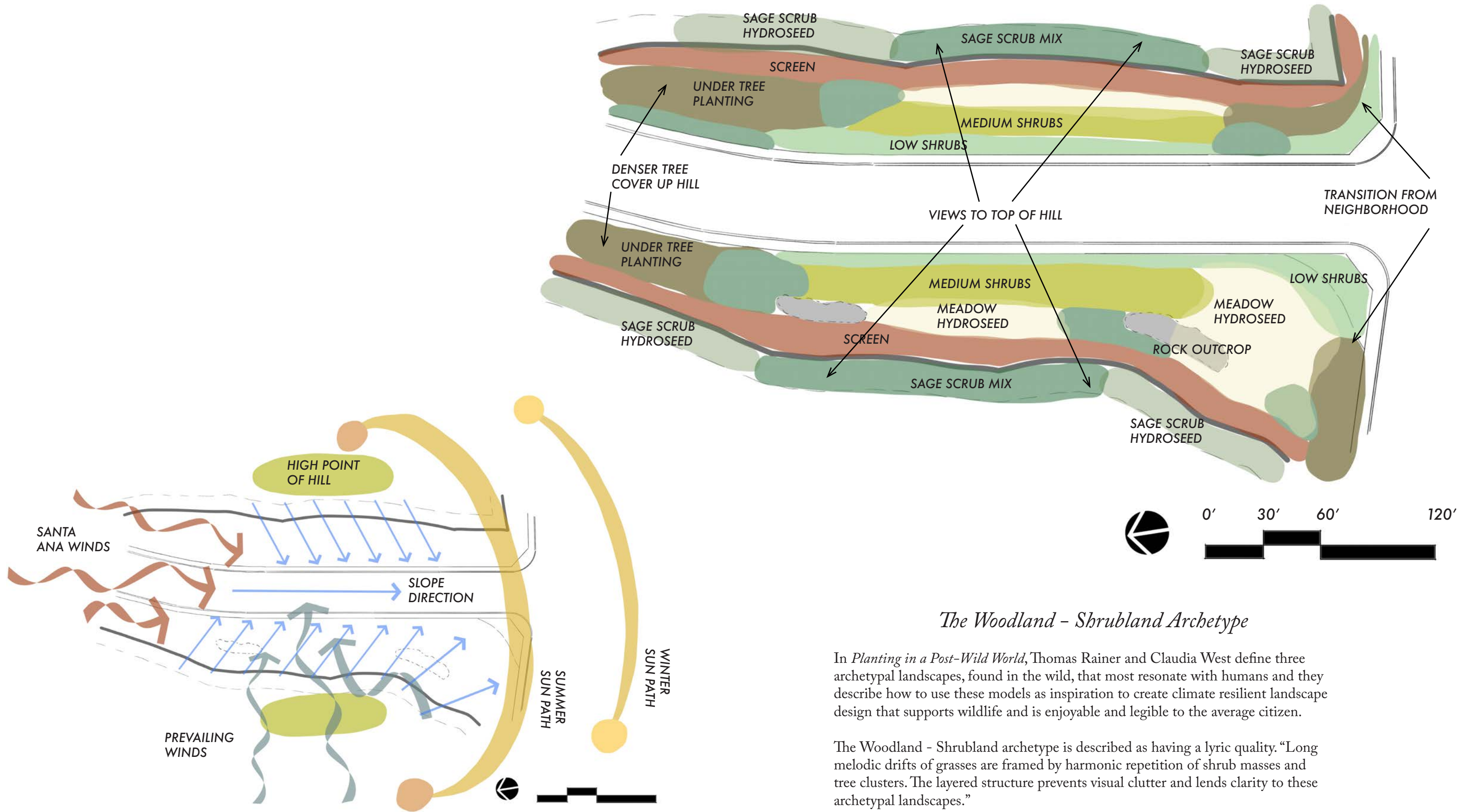
Along the edge of an open space of native coastal sage scrub, one of the most endangered ecosystems in the world, an engineered slope has been created to allow for residential access for a suburban community in Thousand Oaks, California. A need for plant and wild animal habitat restoration is needed. Restoring a dense groundcover of coastal sage scrub shrubs, grasses, annuals, and trees will naturally prevent erosion of the steep hillside, control stormwater for the adjacent neighborhood, and provide habitat and shelter for wildlife and pollinators. Urban heat will be reduced, and a sense of place will be returned for the residents of Conejo Valley.

However, this is not just a scientific exercise. The concept for this restoration will increase the recreational opportunities for pedestrians and pets, as well as scenic beauty for walkers, joggers, and passing motorists.

Coastal Sage Scrub



Site Analysis and Bubble



The Woodland - Shrubland Archetype

In *Planting in a Post-Wild World*, Thomas Rainer and Claudia West define three archetypal landscapes, found in the wild, that most resonate with humans and they describe how to use these models as inspiration to create climate resilient landscape design that supports wildlife and is enjoyable and legible to the average citizen.

The Woodland - Shrubland archetype is described as having a lyric quality. "Long melodic drifts of grasses are framed by harmonic repetition of shrub masses and tree clusters. The layered structure prevents visual clutter and lends clarity to these archetypal landscapes."

Planting Concept

HYDROSEED



SAGE SCRUB



MEADOW

TREES



Cercocarpus betuloides



Heteromeles arbutifolia



Juglans californica



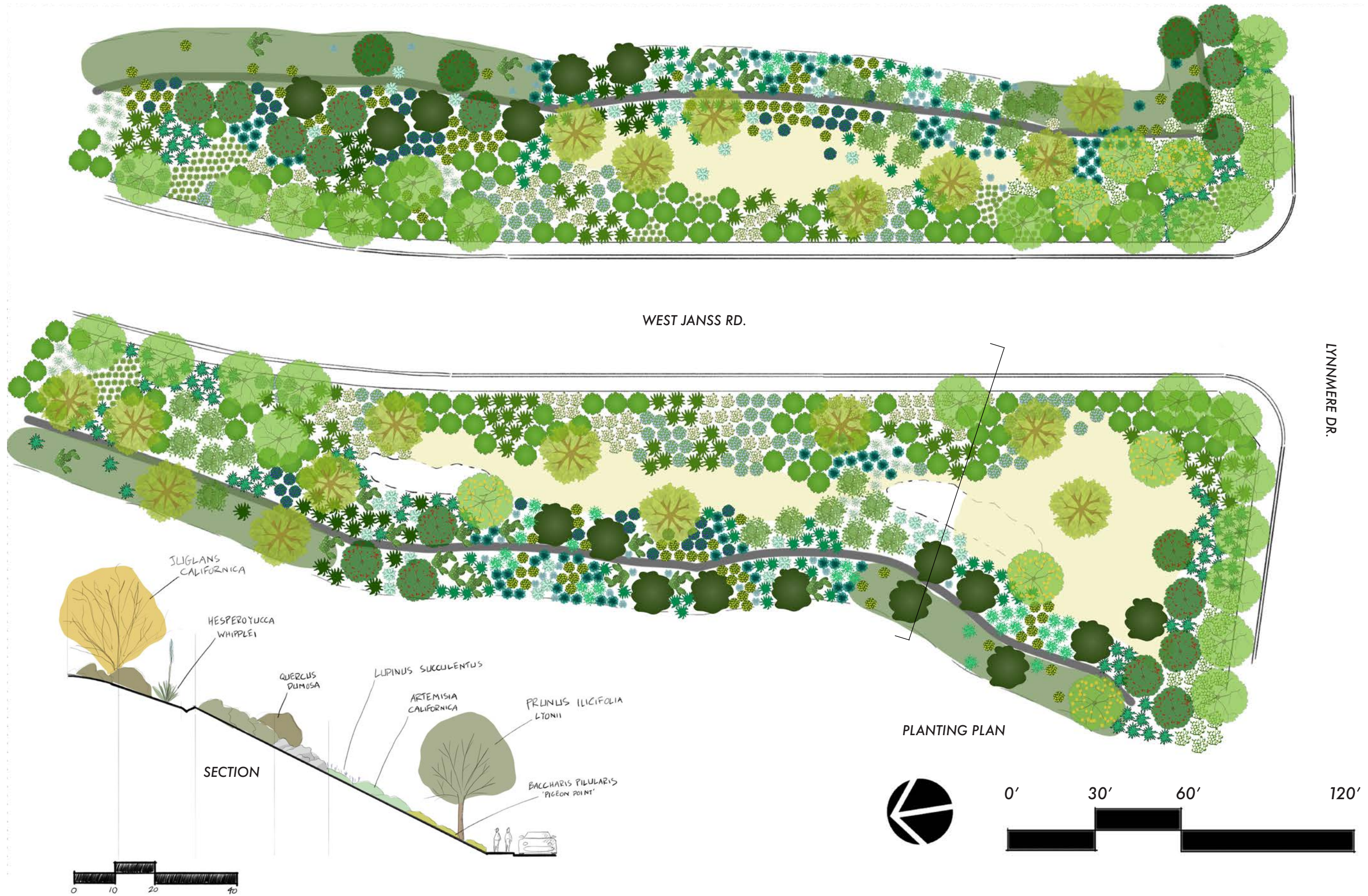
Prunus ilicifolia
ssp. *lyonii*











Sambucus nigra

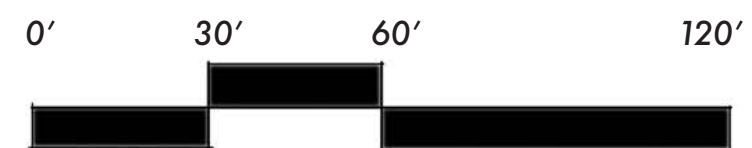
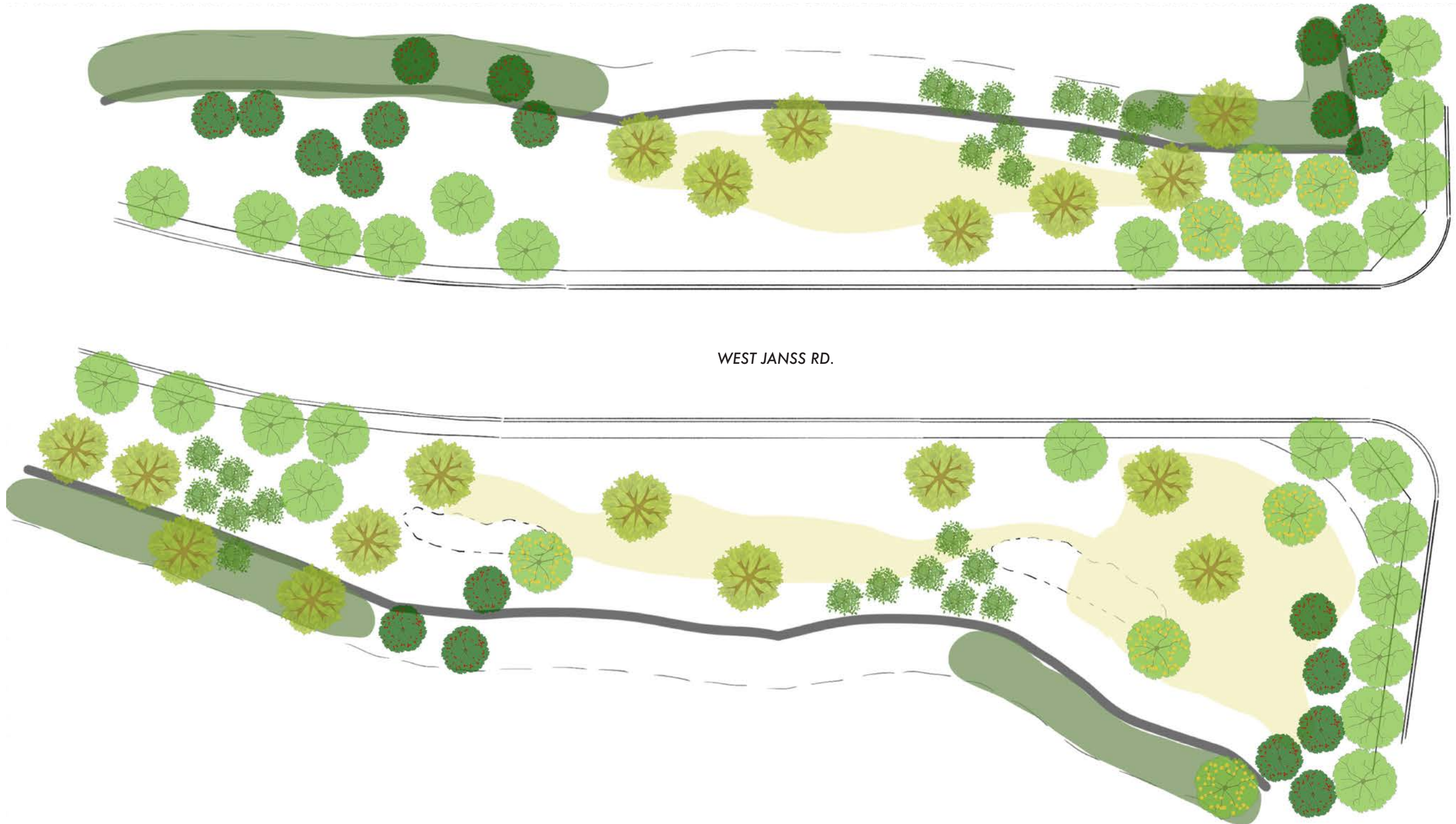


Quercus dumosa



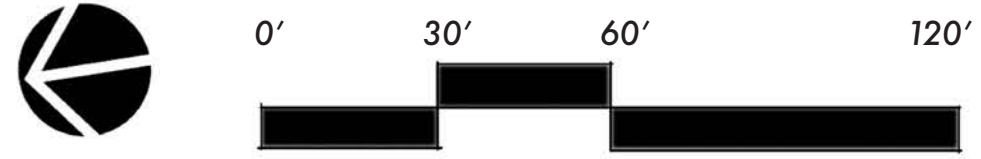
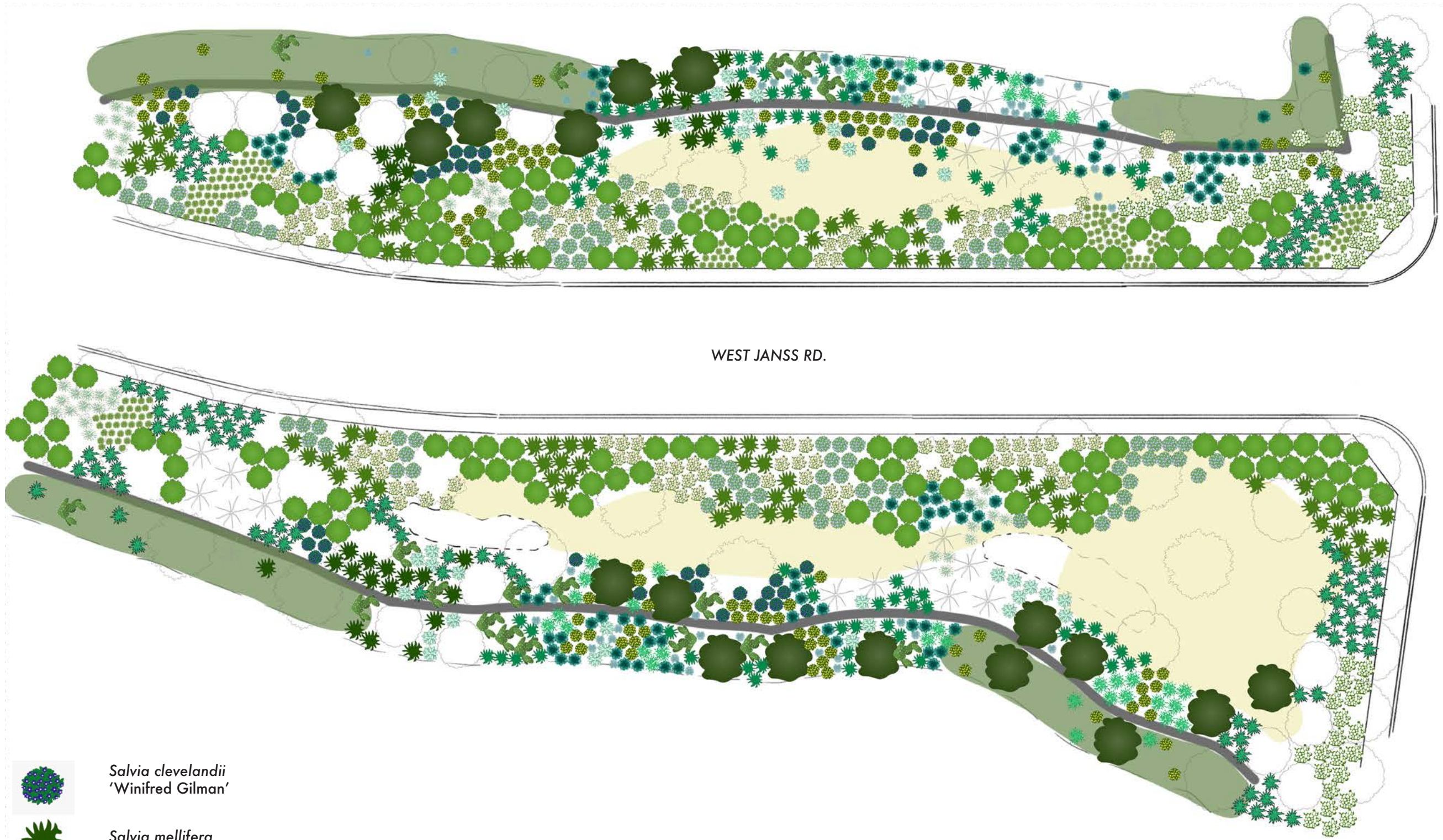
Tree and Hydroseed Planting Concept

- HYDROSEED**
-  SAGE SCRUB
 -  MEADOW
- TREES**
-  *Cercocarpus betuloides*
 -  *Heteromeles arbutifolia*
 -  *Juglans californica*
 -  *Prunus ilicifolia* ssp. *lyonii*
 -  *Sambucus nigra*
 -  *Quercus dumosa*



Shrub Planting Concept

- HYDROSEED**
- SAGE SCRUB
 - MEADOW
- SHRUBS**
- Artemisia californica*
 - Baccharis pilularis* 'Twin Peaks'
 - Encelia californica*
 - Eriogonum cinereum*
 - Eriogonum fasciculatum* 'Bruce Dickinson'
 - Eriogonum fasciculatum* 'Warriner Lytle'
 - Hesperoyucca whipplei*
 - Leymus condensatus*
 - Malacothamnus fasciculatus*
 - Muhlenbergia rigens*
 - Opuntia littoralis*
 - Salvia 'Bee's Bliss'*
 - Salvia apiana*
 - Salvia clevelandii* 'Winifred Gilman'
 - Salvia mellifera*
 - Salvia mellifera* 'Tera Seca'
 - Salvia leucophylla* 'Point Sal'



Plant Palette



BOTANIC NAME	COMMON NAME	WIDTH & HEIGHT in FT.	WUCOLS ZONE 3	COUNTRY OF ORIGIN
1 <i>Artemisia californica</i>	California Sagebrush	4.5' x 3'	VL	California
2 <i>Baccharis pilularis</i> 'Twin Peaks'	Coyote Brush	8' x 1.5'	L	California
3 <i>Encelia californica</i>	Coast Sunflower	4' x 3'	L	California
4 <i>Eriogonum cinereum</i>	Ashleaf Buckwheat	5' x 5'	VL	California
5 <i>Eriogonum fasciculatum</i> 'Bruce Dickinson'	California Buckwheat	6' x 1.5'	VL	California
6 <i>Eriogonum fasciculatum</i> 'Warriner Lytle'	California Buckwheat	5' x 1.5'	VL	California
7 <i>Hesperoyucca whipplei</i>	Chaparral Yucca	3' x 8'	VL	California
8 <i>Leymus condensatus</i>	Giant Wild Rye	6' x 4.5'	L	California
9 <i>Malacothamnus fasciculatus</i>	Chaparral Mallow	6' x 6'	VL	California
10 <i>Muhlenbergia rigens</i>	Deer Grass	2.5' x 3'	L	California
11 <i>Opuntia littoralis</i>	Coastal Prickly Pear	9' x 3'	VL	California
12 <i>Salvia</i> 'Bee's Bliss'	Bee's Bliss Sage	5' x 1.5'	L	California
13 <i>Salvia apiana</i>	Tera Seca Sage	5' x 3'	VL	California
14 <i>Salvia clevelandii</i> 'Winifred Gilman'	Cleveland Sage	4.5' x 3.5'	VL	California
15 <i>Salvia mellifera</i>	Black Sage	6.5' x 4.5'	VL	California
16 <i>Salvia mellifera</i> 'Tera Seca'	Black Sage	6.5' x 1.5'	VL	California
17 <i>Salvia leucophylla</i> 'Point Sal'	Purple Sage	5' x 3.5'	VL	California
Trees				
18 <i>Cercocarpus betuloides</i>	Mountain Mahogany	12' x 15'	VL	California
19 <i>Heteromeles arbutifolia</i>	Toyon	15' x 11'	VL	California
20 <i>Juglans californica</i>	S. California Black Walnut	22' x 20'	L	California
21 <i>Prunus ilicifolia</i> ssp. <i>lyonii</i>	Catalina Cherry	20' x 20'	VL	California
22 <i>Sambucus nigra</i>	Black Elder	20' x 15'	L	California
23 <i>Quercus dumosa</i>	Scrub Oak	15' x 10'	VL	California

Hydroseed Palette

COASTAL SAGE SCRUB MIX



MEADOW MIX



BOTANIC NAME	COMMON NAME	WIDTH & HEIGHT in FT.	WUCOLS ZONE 3	COUNTRY OF ORIGIN
Coastal Sage Scrub Mix				
1 <i>Eriogonum fasciculatum</i>	California Buckwheat	4' x 3.5'	VL	California
2 <i>Poa secunda</i>	One-Sided Blue Grass	2' x 2'	L	California
3 <i>Artemisia californica</i>	California Sagebrush	4.5' x 3'	VL	California
4 <i>Salvia leucophylla</i>	Purple Sage	8' x 3.5'	VL	California
5 <i>Lupinus bicolor</i>	Miniature Lupine	1' x 1'	L	California
6 <i>Eriogonum crocatum</i>	Conejo Buckwheat	2.5' x 2'	VL	California
Meadow Mix				
7 <i>Lupinus succulentus</i>	Arroyo Lupine	3' x 3'	L	California
8 <i>Layia platyglossa</i>	Common Tidy Tips	1.5' x 1.5'	L	California
9 <i>Salvia apiana</i>	White Sage	5' x 3'	L	California
10 <i>Elymus condensatus</i>	Giant Wild Rye	6' x 4.5'	VL	California
11 <i>Stipa pulchra</i>	Purple Needlegrass	1.5' x 3.5'	VL	California
12 <i>Clarkia purpurea</i>	Winecup Clarkia	1' x 3'	L	California

Coastal Sage Scrub mix

BOTANIC NAME	COMMON NAME	%
<i>Eriogonum fasciculatum</i>	California Buckwheat	10
<i>Poa secunda</i>	One Sided Blue Grass	15
<i>Artemisia californica</i>	California Sagebrush	25
<i>Salvia leucophylla</i>	Purple Sage	10
<i>Lupinus bicolor</i>	Miniature Lupine	15
<i>Eriogonum crocatum</i>	Conejo Buckwheat	25

FIBER MULCH (pounds per acre) 1800
 BINDER (pounds per acre) 150

Meadow mix

BOTANIC NAME	COMMON NAME	%
<i>Lupinus succulentus</i>	Arroyo Lupine	18
<i>Layia platyglossa</i>	Common Tidy Tips	18
<i>Salvia apiana</i>	White Sage	10
<i>Elymus condensatus</i>	Giant Wildrye	15
<i>Stipa pulchra</i>	Purple Needlegrass	21
<i>Clarkia purpurea</i>	Winecup Clarkia	18

FIBER MULCH (pounds per acre) 1800
 BINDER (pounds per acre) 150