

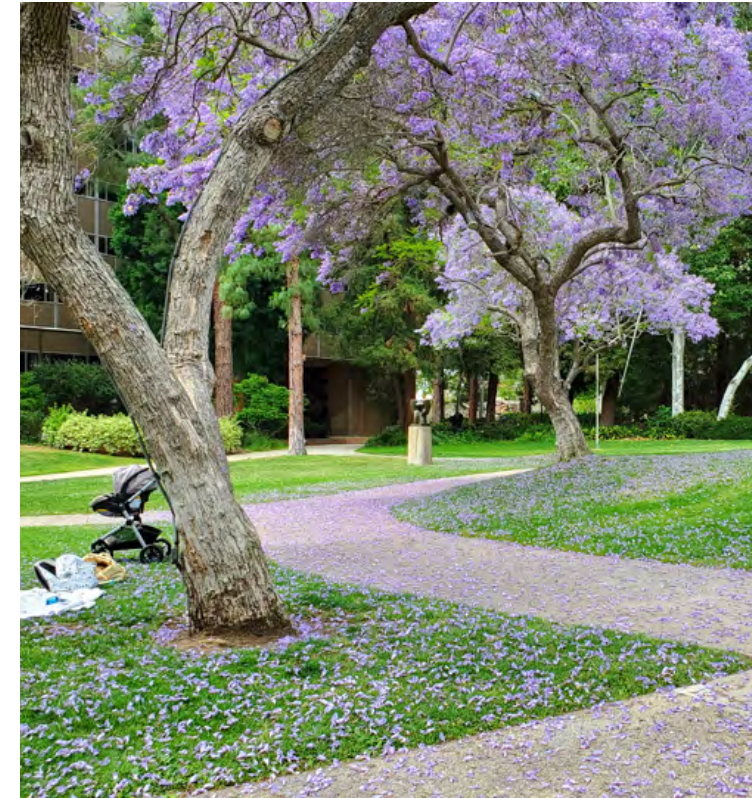
**UNIVERSITY OF CALIFORNIA, LOS ANGELES  
SOUTH ENTRANCE RE-DESIGN**



CYLE Designs  
Catherine Eisenberg  
LD5 - Planting Design  
Spring 2023  
Instructor: Pamela Brief

*(ca. 1937) - The intersection of LeConte Avenue and Westwood Boulevard, looking southwest.*





The highlights of UCLA's newly re-designed South entrance focus on:

Creating a greater sense of **PLACE**

By using a carefully curated selection of plants and trees, we are able to create a unified sense of place that highlights our Southern California heritage. The chosen plant palette ignites the olfactory senses while the color palette evokes feelings of excitement and curiosity while grounding the viewer to the spot. Blues and soft purples mix with yellows and oranges to spotlight UCLA's legacy.

Providing amenities for the community like **SEATING**

The south entrance of UCLA sits at the intersection of Westwood Boulevard and Le Conte Avenue. It serves as a convergence of multiple different communities that we want to consider. It marks the first step onto official campus grounds from the bustling life of Westwood village, just south of the intersection. It also serves the greater community visiting the Medical Center to the North. By providing more amenities like seating we can better provide a safe space for students, medical patients, families, and urbanites alike.

Helping to mitigate the effects of climate change by providing more **SHADE**

Currently the open lawn and concrete walkways are creating a heat island effect that is neither desirable nor enjoyable. By providing more shade that is seating adjacent, we are able to help mitigate the effects of climate change on the community at large while establishing a pleasant experience for passive recreation.

Whether driving through or walking by, the newly redesigned intersection will entice the community to stop and enjoy the sights, sounds and smells.

Reflecting on the past by educating with a **HISTORICAL STOPOVER**

To pay homage to the rich history of the area, a historical garden walk will be created by repurposing the un-used brick planters. It will showcase wayside exhibits that tell the history of UCLA broken down into 3 main periods of the University and surrounding area's existence. This will give passersby a chance to learn about the campus and development of the land they stand on while taking a pleasant stroll through a shaded garden.



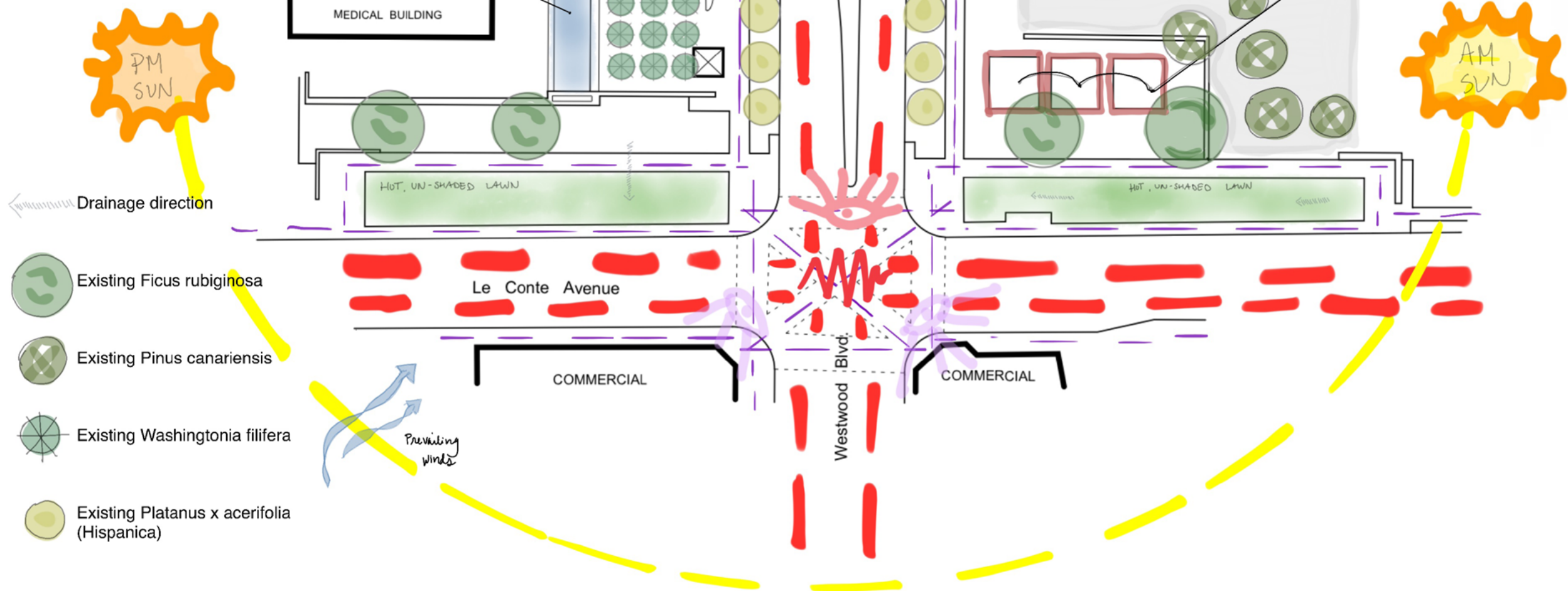
# SITE ANALYSIS



## UCLA Landscape Architecture Extension Program - Spring 2022 Landscape Design 5 - PLANTING DESIGN Project #3 - UCLA South Entry Remodel

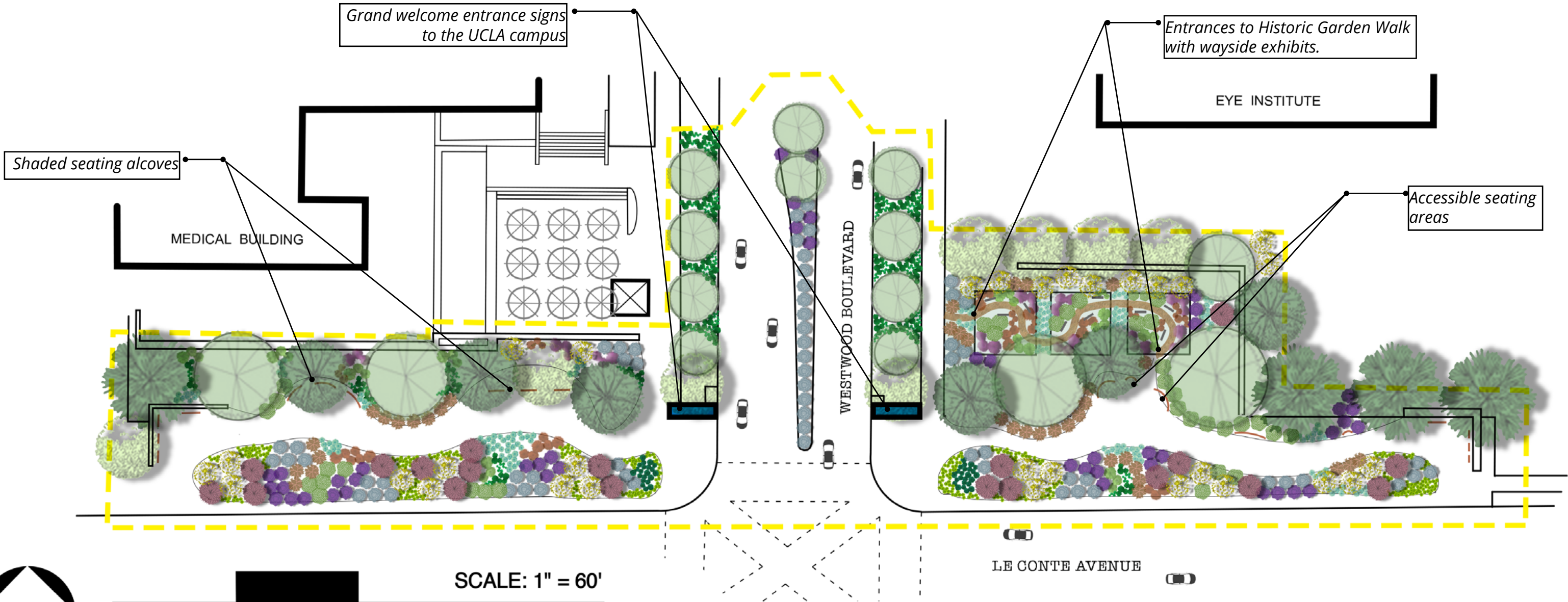
Site info:  
Site is located at the intersection of Le Conte avenue and Westwood Blvd. This serves as the main south entrance to University of California, Los Angeles.  
Sandy loam soil.  
Sunset climate zone 22

- Vehicular circulation
- Pedestrian circulation
- Sun path
- Good views
- Harsh, urban views
- Noise



- Existing Ficus rubiginosa
- Existing Pinus canariensis
- Existing Washingtonia filifera
- Existing Platanus x acerifolia (Hispanica)

**CONCEPTUAL PLAN  
NEW FEATURES**



Grand welcome entrance signs  
to the UCLA campus

Shaded seating alcoves

MEDICAL BUILDING

WESTWOOD BOULEVARD

Entrances to Historic Garden Walk  
with wayside exhibits.

EYE INSTITUTE

Accessible seating  
areas

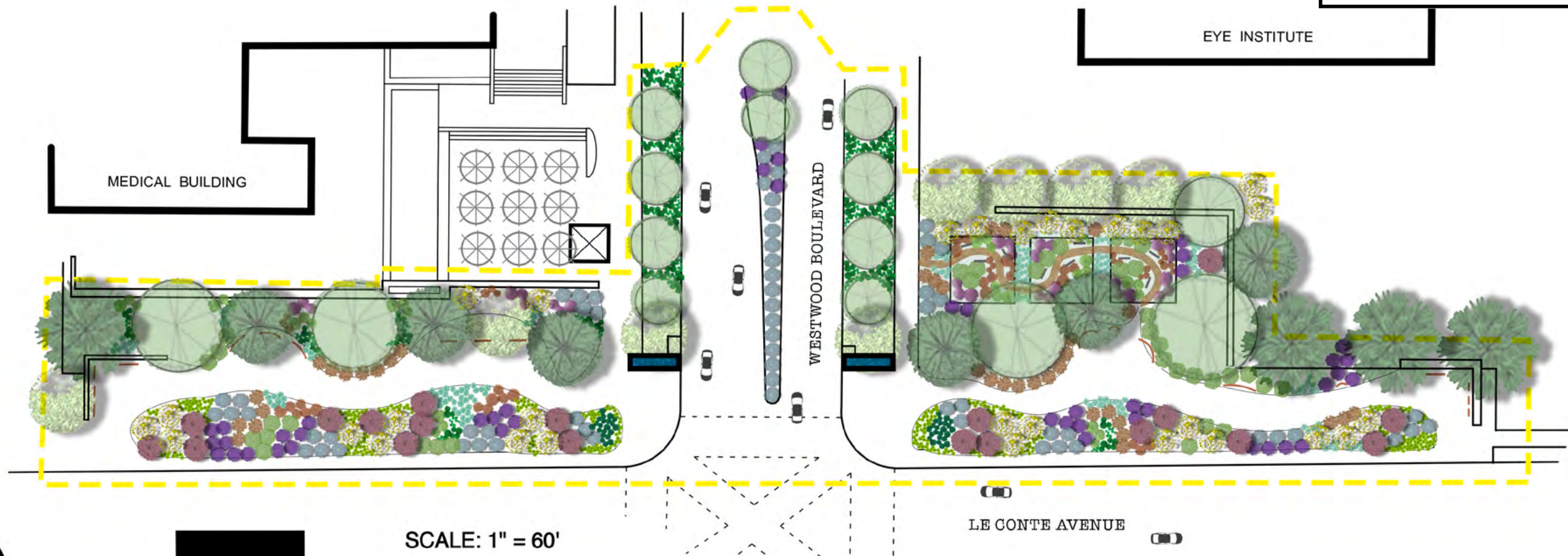
LE CONTE AVENUE

SCALE: 1" = 60'





# CONCEPTUAL PLANTING PLAN

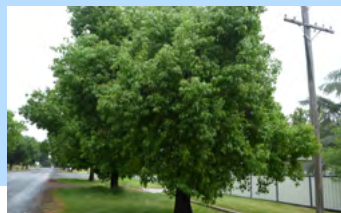


## PLANT PALETTE

### TREES



*Quercus tomentella*\*  
Island oak  
33-66' T x 35' W  
L



*Brachychiton populneus*  
Bottle Tree, Kurrajong  
20-50' T x 20-50' W  
L



*Umbellularia californica*\*  
California Bay Laurel  
6-80'T x 3-30'W  
L

### LARGE SHRUBS



*Arctostaphylos densiflora*  
'Howard McMinn' \*  
Howard McMinn Manzanita  
5-7'T x 8-10'W  
L



*Carpenteria californica*\*  
Bush Anemone  
6-10'T x 10'W  
L

### GRASSES



*Muhlenbergia rigens*\*  
Deergrass  
4-5'T x 4'W  
L



*Festuca Glauca*  
Elijah Blue Fescue  
1'T x 1-2'W  
L



*Leymus condensatus*  
'Canyon Prince'  
Canyon Prince Wild Rye  
2-3'T x Running habit  
L

### SHRUBS and FRIENDS: MEDIUM-LOW



*Penstemon spectabilis*\*  
Showy Penstemon  
2-4'T x 3-4'W  
L



*Verbena lilacina 'De la Mina'*\*\*  
De la Mina Verbena  
2-3'T x 3-4'W  
L



*Arctostaphylos 'John Dourley'*\*\*  
John Dourley Manzanita  
2-3' T x 5-6' W  
L



*Baccharis pilularis 'Pigeon Point'*\*\*  
Pigeon Point Coyote Brush  
1-2'T x 6-8'W  
L



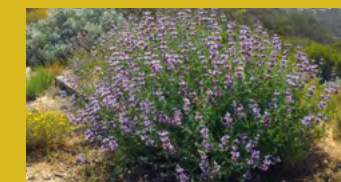
*Agave 'Blue Flame'*  
Blue Flame Agave  
2-3'T x Clumping Habit  
L



*Lantana camara 'Yellow trailing'*  
Yellow Spreading Lantana  
2-3'T x 6-8'W  
L



*Ceanothus 'Concha'*\*\*  
Concha Ceanothus  
3-6'T x 3-6'W  
L



*Salvia 'Poza Blue'*\*\*  
Poza Blue Sage  
4-5'T x 4-5'W  
L