

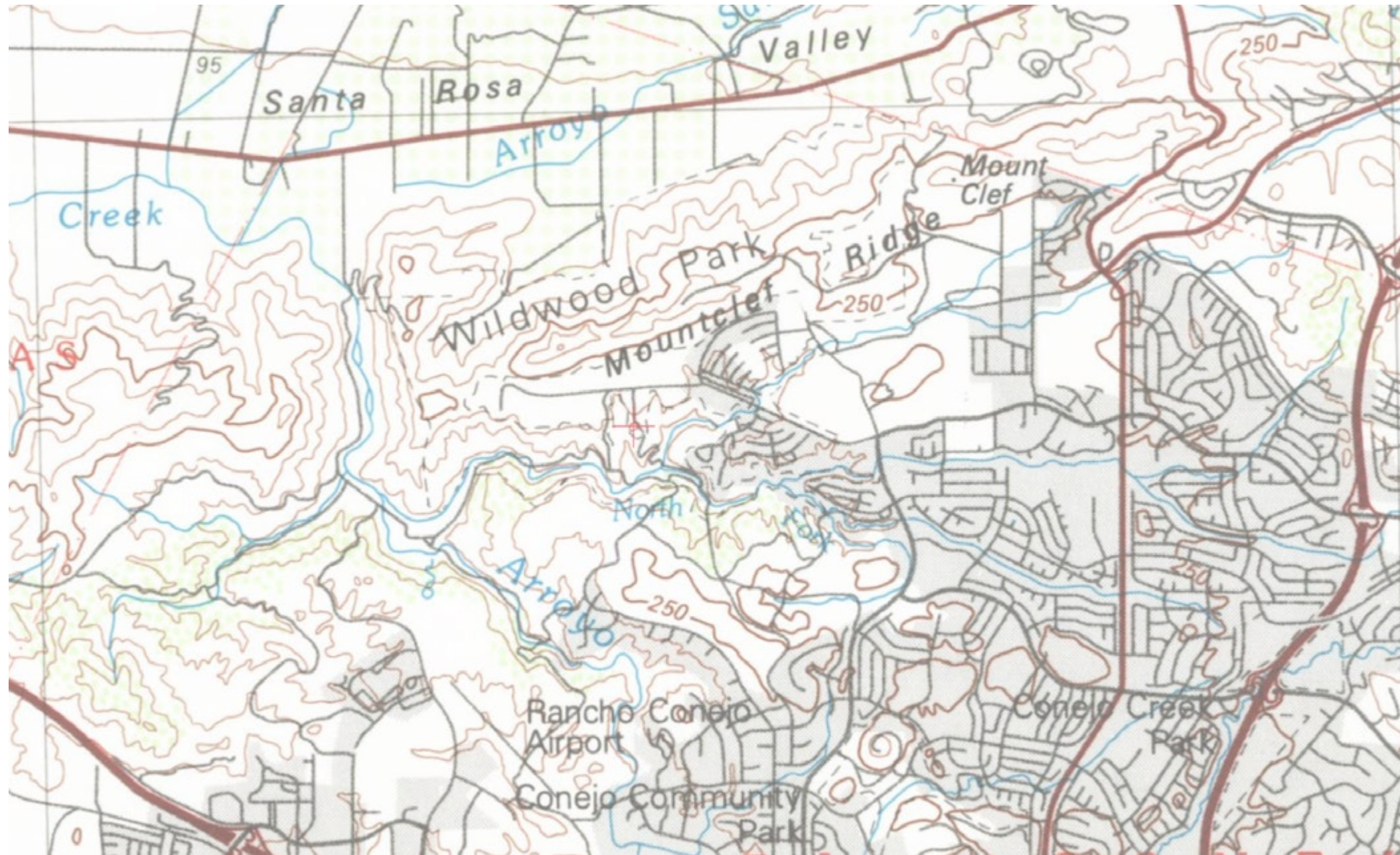
PROJECT #2

SLOPE PLANTING DESIGN // Thousand Oaks, California

Catherine Litaker-Eisenberg // LD5 // ARCHX472.5 // Spring 2023 // Instructor: Pamela Brief



DESIGN CONCEPT

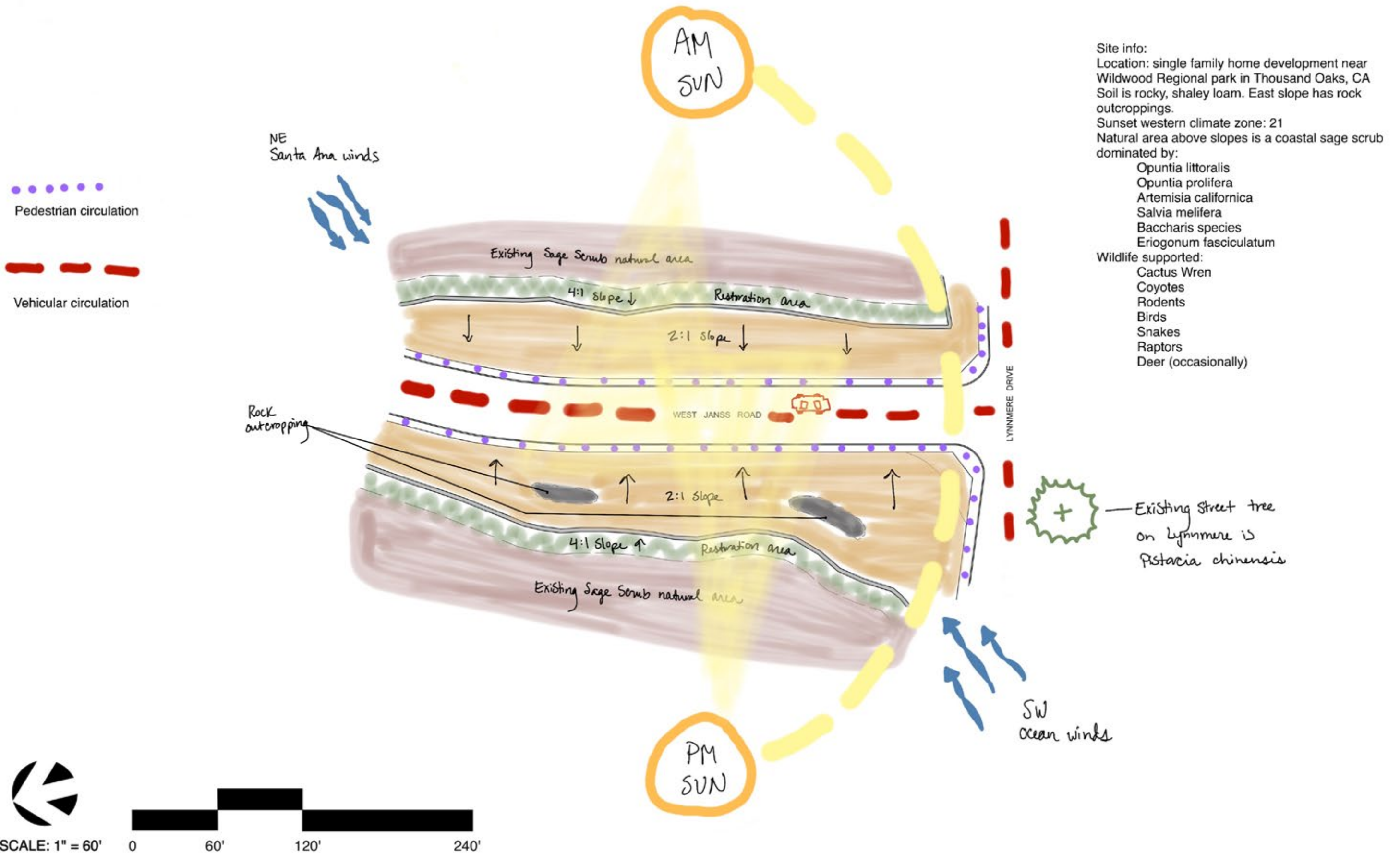


The design for this slope is inspired by the native California landscape that would have existed before the mass development of Los Angeles and Thousand Oaks. All plants listed are drought tolerant, require low water usage and are low maintenance in conjunction with hillside considerations. Erosion control, heat mitigation and a natural flow of undulating views is at the forefront of this design.

The plants chosen evoke a sense of place and feeling. Southern California has such a wide range of species that often, simply a color combination or smell can ignite the senses to ground the viewer to the spot. Restoring the native vegetation will also assist in attracting native insects, thus attracting pollinators, birds and other animals including: rodents, coyotes, snakes, raptors, and the protected cactus wren.

The color palette includes pale blues and grays, dark greens, purples and pops of bright yellows and orange. A classic, Southern California view.

SITE ANALYSIS



Site info:
 Location: single family home development near Wildwood Regional park in Thousand Oaks, CA
 Soil is rocky, shaley loam. East slope has rock outcroppings.
 Sunset western climate zone: 21
 Natural area above slopes is a coastal sage scrub dominated by:

- Opuntia littoralis
- Opuntia prolifera
- Artemisia californica
- Salvia melifera
- Baccharis species
- Eriogonum fasciculatum

Wildlife supported:
 Cactus Wren
 Coyotes
 Rodents
 Birds
 Snakes
 Raptors
 Deer (occasionally)



SCALE: 1" = 60'



FULL PLANT LIST

		<i>Plant Latin name</i>	<i>Common Name</i>	<i>Approx mature</i>	<i>WUCOLS</i>	<i>Soil requirements</i>
Trees/Shrubs	Trees	<i>Pistacia chinensis</i>	Chinese Pistache	30-35' T x 20-30' W	Low water	Likes well drained soil
		<i>Searsia lancea</i>	African Sumac	20-30' T x 20-3-' W	Low water	Likes well drained soil
	Large Shrubs	<i>Sambucus mexicana</i>	Blue Elderberry	20-30' T x 20-3-' W	Low Water	Likes well drained soil
		<i>Fremontodendron californicum</i>	California Flannel Bush	6-20' T x 20' W	Low Water	Fast, moderate draining soil
		<i>Archystaphylos glauca</i>	Big Berry Manzanita	4-20' T x 6-20' W	Low water	Likes well drained soil
Shrubs	Tall Shrubs: over 6'	<i>Philadelphus lewisii</i>	Mock Orange	4.9-12' T x 6' W	Very Low	Likes Medium Drained soil
		<i>Rhus integrifolia</i>	Mock Orange	6-10' T x 10-15' W	Low Water	Like well drained soil
		<i>Baccharis pilularis</i>	Coyote Bush	1.5-10' T x 12' W	Very low	Like well drained soil
		<i>Malosma laurina</i>	Laurel Sumac	10-20' T x 20' W	Very Low	Like well drained soil
		<i>Abutilon palmeri</i>	Palmer's Indian Mallow	3-8' T x 3-5' W	Very Low	Likes well draining soil
	Medium Shrubs 1: 3'-6'	<i>Eriogonum giganteum</i>	St. Catherine's Lace	2-5' T x 4-10' W	Very Low	Likes well draining soil
		<i>Ceanothus thyrsiflorus var. griseus 'Yankee Point'</i>	Yankee point carmel Ceanothus	2-3' T x 10-12' W	Low Water	Fast, medium, slow draining
		<i>Salvia leucophylla</i>	Purple Sage	2-5' T x 3-10' W	Very low	Likes well draining soil
		<i>Salvia mellifera</i>	Black Sage	3-6' T x 3-10' W	Very low	Likes well draining soil
		<i>Verbena lilacina 'De La Mina'</i>	De la Mina verbena	2-3' T x 2-4' W	Low Water	Likes well draining soil
	Low Shrubs: <3'	<i>Encelia californica</i>	California Bush Sunflower	1.5-5' T x 2-7' W	Very Low	Likes well drained. Tolerates sodic soil.
		<i>Salvia spathacea</i>	Hummingbird Sage	1-3' T x 3' W	Very Low	Likes well drained soil
		<i>Symphotrichum chilense</i>	California Aster	1-3' T x 3' W	Very Low	Likes well drained soil
		<i>Salvia x 'Bee's Bliss'</i>	Bee's Bliss Sage	2' T x 6-8' W	Very Low	Likes well drained soil
		<i>Carex pansa</i>	California Meadow Grass	0.7-1.3' T	Low water	Likes well drained soil
Hydroseed Mix:	Meadow Mix	<i>Monardella villosa</i>	Coyote Mint	2' T x 3' W	Very Low	Low water
		<i>Eschscholzia californica</i>	California Poppy	6"-2' T x 1-2' W	Very low	Tolerates a variety of soils
		<i>Collinsia heterophylla</i>	Chinese Purple Houses	0.5-1.6' T x 4" W	Low	Likes well drained soil
		<i>Lasthenia glabrata</i>	Yellow Rayed Lasthenia	1-2' T	Low-moderate	Tolerates a variety of soils
		<i>Leptosiphon grandiflorus</i>	Largeflower Linanthus	6" T	Low	Likes well drained soil
		<i>Stipa pulchra</i>	Purple Needlegrass	3' T x 1.5' W	Very Low	Tolerates a variety of soils
Hydroseed Mix:	Coastal Sage Scrub Mix	<i>Deschampsia cespitosa</i>	Tufted hairgrass	2-3' T x 1-2' W	Low	Tolerates a variety of soils
		<i>Artemisia californica</i>	California Sagebrush	1-8' T x 4' W	Very Low	Likes fast, medium draining soil
		<i>Eriogonum fasciculatum var. fasciculatum</i>	California Buckwheat	.5-7' T	Very Low	Likes fast, medium draining soil
		<i>Salvia apiana</i>	White Sage	3-5' T x 3-8' W	Very Low	Likes fast-medium draining soil
		<i>Eriophyllum confertiflorum</i>	Yellow Yarrow	1-3' T x .5-1.5' W	Low Water	Fast, medium or slow.
		<i>Festuca microstachys</i>	Small Fescue	2.5 T	Low Water	Tolerates a variety of soils
		<i>Sisyrinchium bellum</i>	Blue-eyed Grass	1-2' T x 3" W	Low water	Likes fast, medium or slow draining soil

PLANT PALETTE

Trees

Pistacia chinensis



Searsia lancea



Large Shrubs

Sambucus mexicana



Fremontodendron californicum



Archystaphylos glauca



PLANT PALETTE

Tall Shrubs

Philadelphus lewisii



Abutilon palmeri



Rhus integrifolia



Baccharis pilularis



Malosma laurina



Medium Shrubs

Encelia californica



Ceanothus thyrsiflorus var. *griseus* 'Yankee Point'



Salvia leucophylla



Salvia mellifera



Verbena lilacina 'De La Mina'



Eriogonum giganteum



Low Shrubs

Carex pansa



Symphotrichum chilense



Monardella villosa



Salvia x 'Bee's Bliss'



Salvia spathacea



PLANT PALETTE

Hydroseed: Meadow Mix

Deschampsia cespitosa 15%



Stipa pulchra 20%



Lasthenia glabrata 15%



Eschscholzia californica 10%



Collinsia heterophylla 10%



Leptosiphon grandiflorus 20%



Hydroseed: Coastal Sage Scrub Mix

Salvia apiana 10%



Artemisia californica 10%



Festuca microstachys 25%



Eriophyllum confertiflorum 20%



Eriogonum fasciculatum var. *fasciculatum* 10%

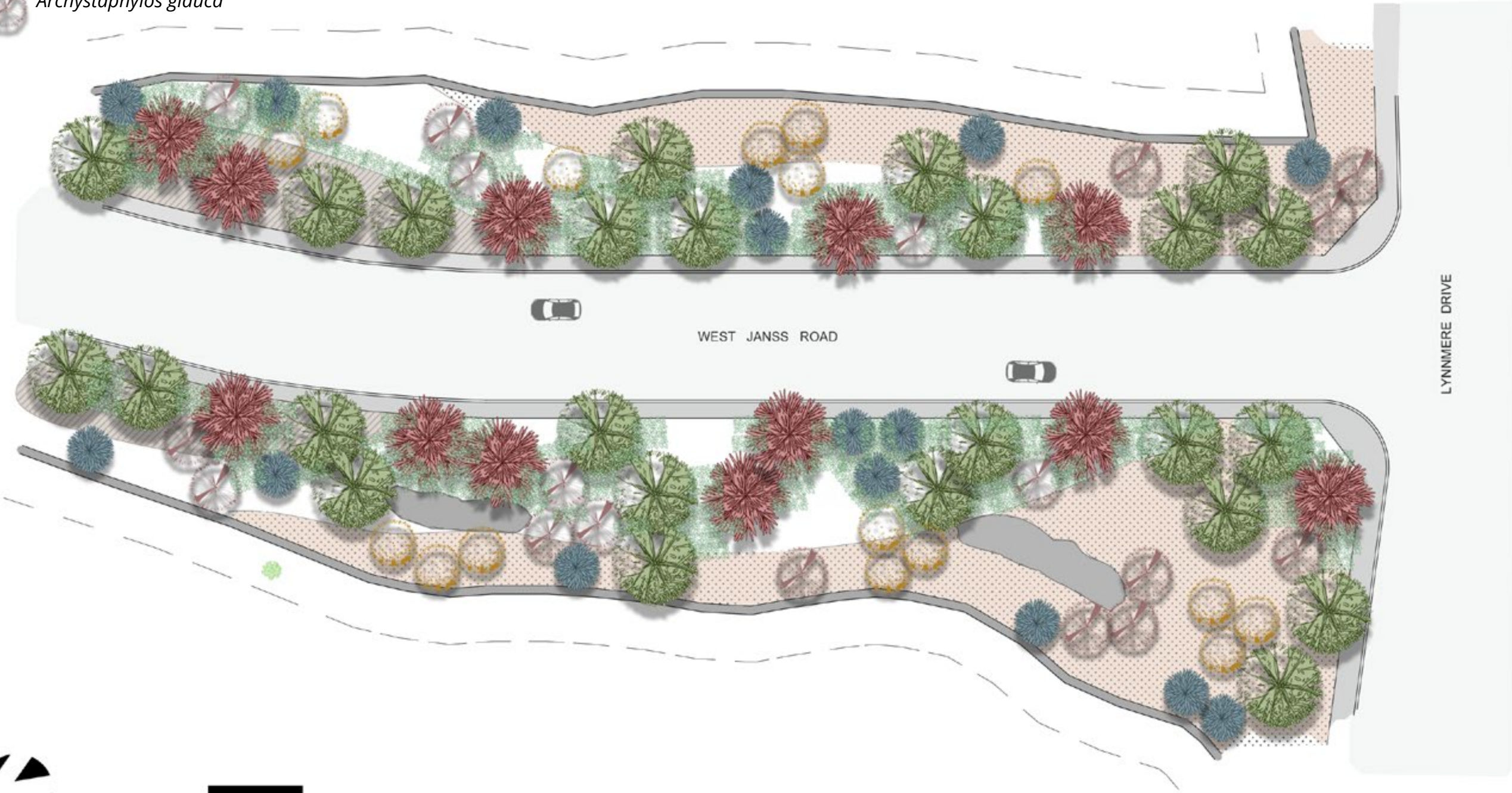


Sisyrinchium bellum 25%



TREES, HYDROSEED AND GROUNDCOVER PLANTING PLAN

-  *Searsia lancea*
-  *Pistacia chinensis*
-  *Sambucus mexicana*
-  *Fremontodendron californicum*
-  *Archystaphylos glauca*
-  Groundcover
-  Coastal Sage Scrub Hydroseed Mix
-  Meadow Hydroseed Mix















SCALE: 1" = 30'

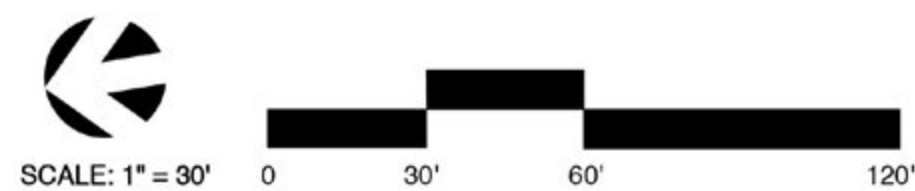
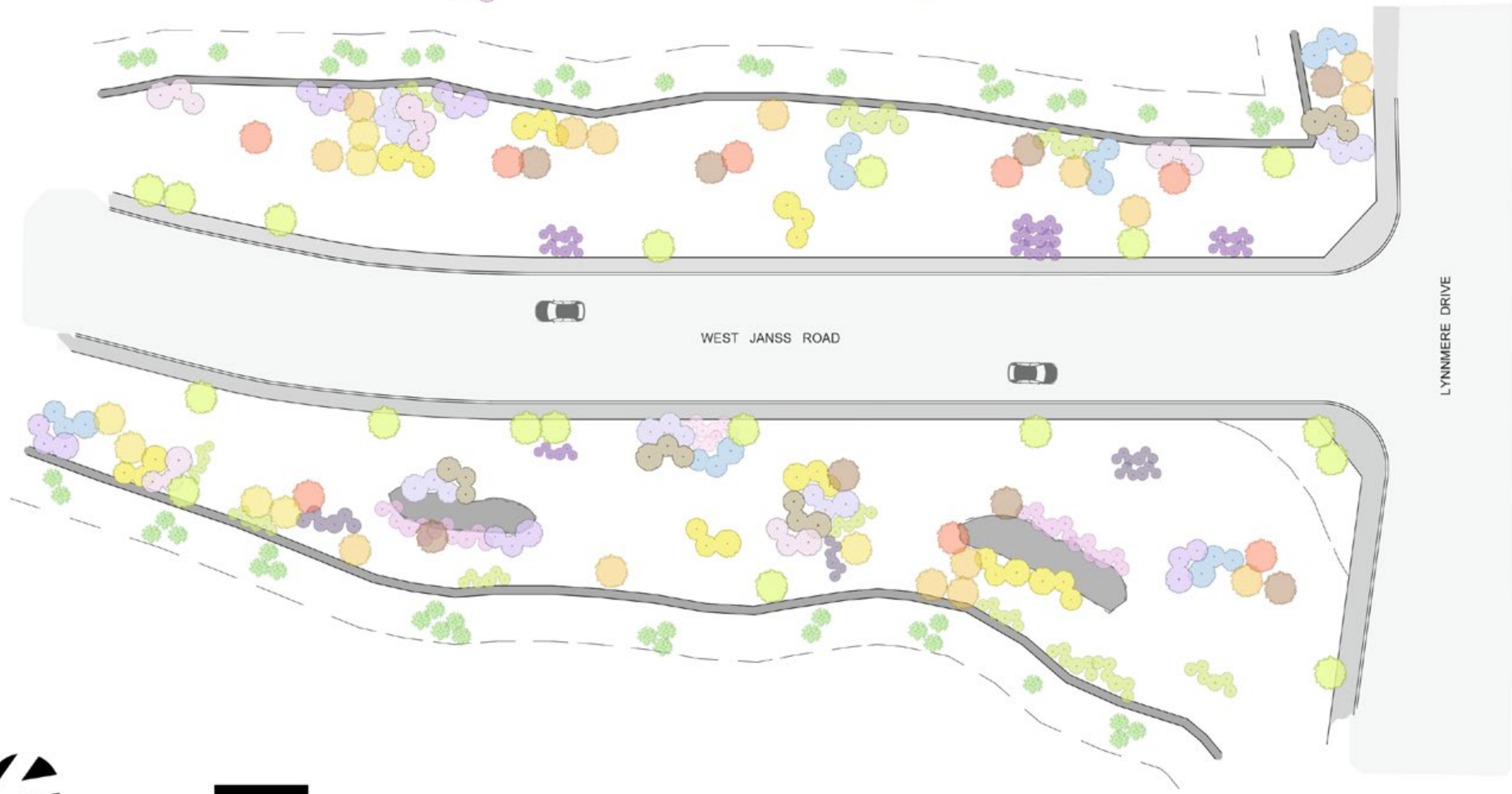


SHRUBS PLANTING PLAN

-  *Philadelphus lewisii*
-  *Abutilon palmeri*
-  *Rhus integrifolia*
-  *Baccharis pilularis*
-  *Malosma laurina*

-  *Encelia californica*
-  *Ceanothus thyrsiflorus* var. *griseus* 'Yankee Point'
-  *Salvia leucophylla*
-  *Salvia mellifera*
-  *Verbena lilacina* 'De La Mina'
-  *Eriogonum giganteum*

-  *Carex pansa*
-  *Symphotrichum chilense*
-  *Monardella villosa*
-  *Salvia* x 'Bee's Bliss'
-  *Salvia spathacea*
-  Additional *Opuntia* and *Cholla* for habitat



FINAL PLANTING PLAN

