

PROJECT 3 - UCLA SOUTH ENTRY REDESIGN
 CALLIE KOURTIS, 14 JUNE 2023
 LANDSCAPE DESIGN 5, SPRING 2023, PAMELA BRIEF, INSTRUCTOR

DESIGN NARRATIVE - ITALIAN RENAISSANCE GARDEN WITH A CALIFORNIA NATIVE SPIN

ITALIAN RENAISSANCE MEDITERRANEAN GARDEN

The first buildings constructed at UCLA, Powell Library, the Humanities Building, and Haines Hall, were arrayed around a quadrangular courtyard and were designed in the Romanesque style by supervising architect George W. Kelham. This included the Arroyo Bridge with its huge arches and intricate rosette and diamond patterns of carved limestone and inlaid red brick.

These patterns are also clearly imitated at the current incarnation of Westwood Blvd. entry, which was constructed much later, in the planters and brick patterns. In keeping with this original design intent, the Westwood/Le Conte redesign has been modeled after the Italian Renaissance Garden, but with a California Native spin. Because California Natives naturally look like many plants and shrubs from the Mediterranean, it was an easy integration, and one that will serve the biodiversity and natural habitat of this site.

The center median is designed with *Cupressus sempervirens* (Italian Cypress) to bring attention to the entry and make a strong visual statement. French lavender replaces the bougainvillea to bring color and evoke the Mediterranean sense immediately when entering the campus. The existing sycamores have been preserved, as they bring a history to the boulevard and are part of its identity.

The brick planter boxes on the east lawn are designed in the Italian Renaissance style using a boxwood hedge around the edges, rounded/spherical sculpted boxwoods in the corners, roses for color and a regal feel, and a Bay Laurel in each center. A seat wall is placed along the front of each planter for a shady rest for students or other campus visitors. A *Westringia fruticosa* (Coast Rosemary) hedge is placed along the back walls.

The existing seat walls on both the east and west lawns have been preserved, but have been made accessible by guiding the visitor along the lawn or through the Decomposed Granite (DG) access points; they are also more private, separated from the sidewalk by the planted beds. The lawns are bordered by Renaissance style beds utilizing California Natives, as are the beds in the parkway.

The *Magnolia grandiflora* (Southern Magnolia) and Ficus trees at the entry have also been preserved due to their size. A third Magnolia is to be planted on the west lawn to bring balance to that side, with small dwarfs being used in the beds to match the street trees being used across Le Conte. While these are not Mediterranean, they have been incorporated to keep the context consistent to the surroundings.

This new design incorporates an architectural style consistent with the UCLA campus while providing spaces for visitors to pause and relax, an interesting view to passers-by in both cars and on foot, and also integrating native species back into the environment.



VILLA MEDICI IN FIESOLE, FLORENCE, ITALY



GETTY VILLA, MALIBU, CALIFORNIA

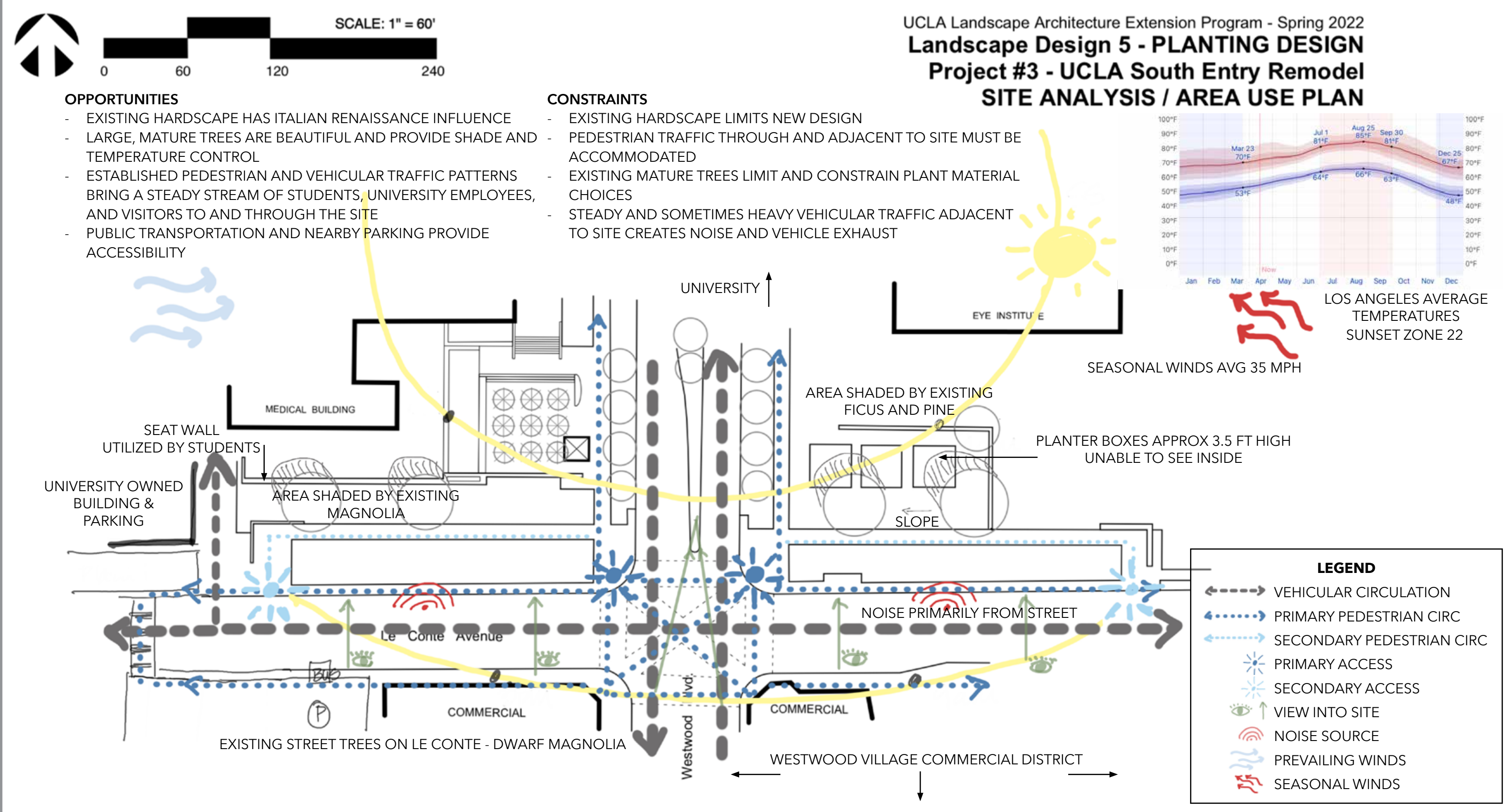


TUSCANY, ITALY

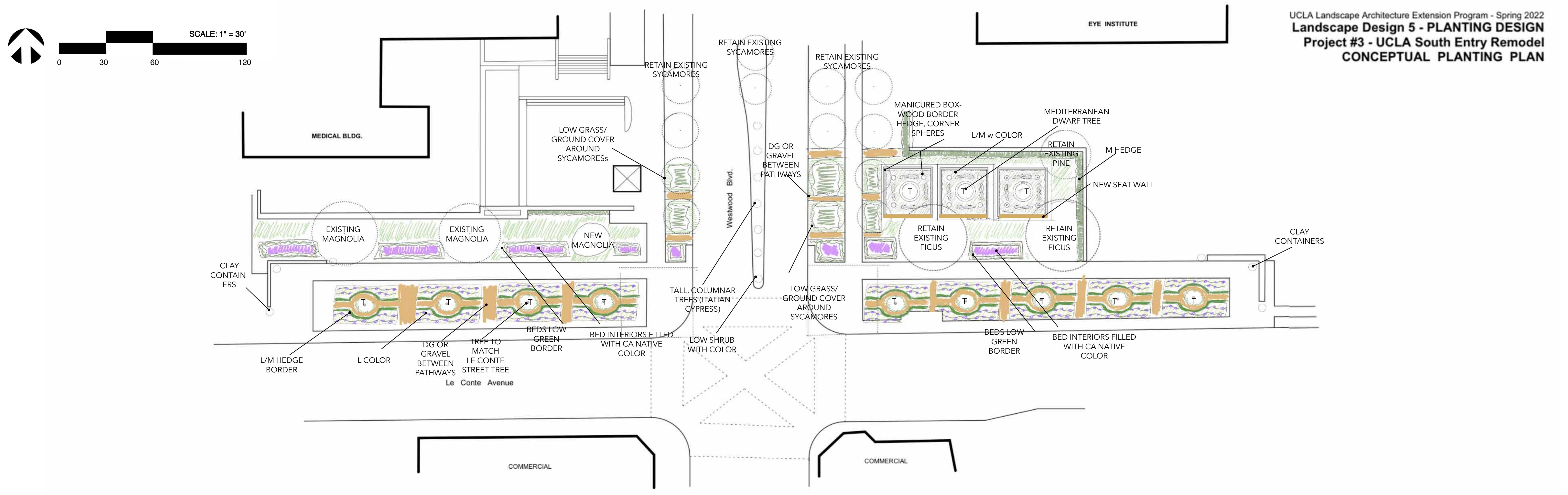


GETTY VILLA, MALIBU, CALIFORNIA

SITE ANALYSIS

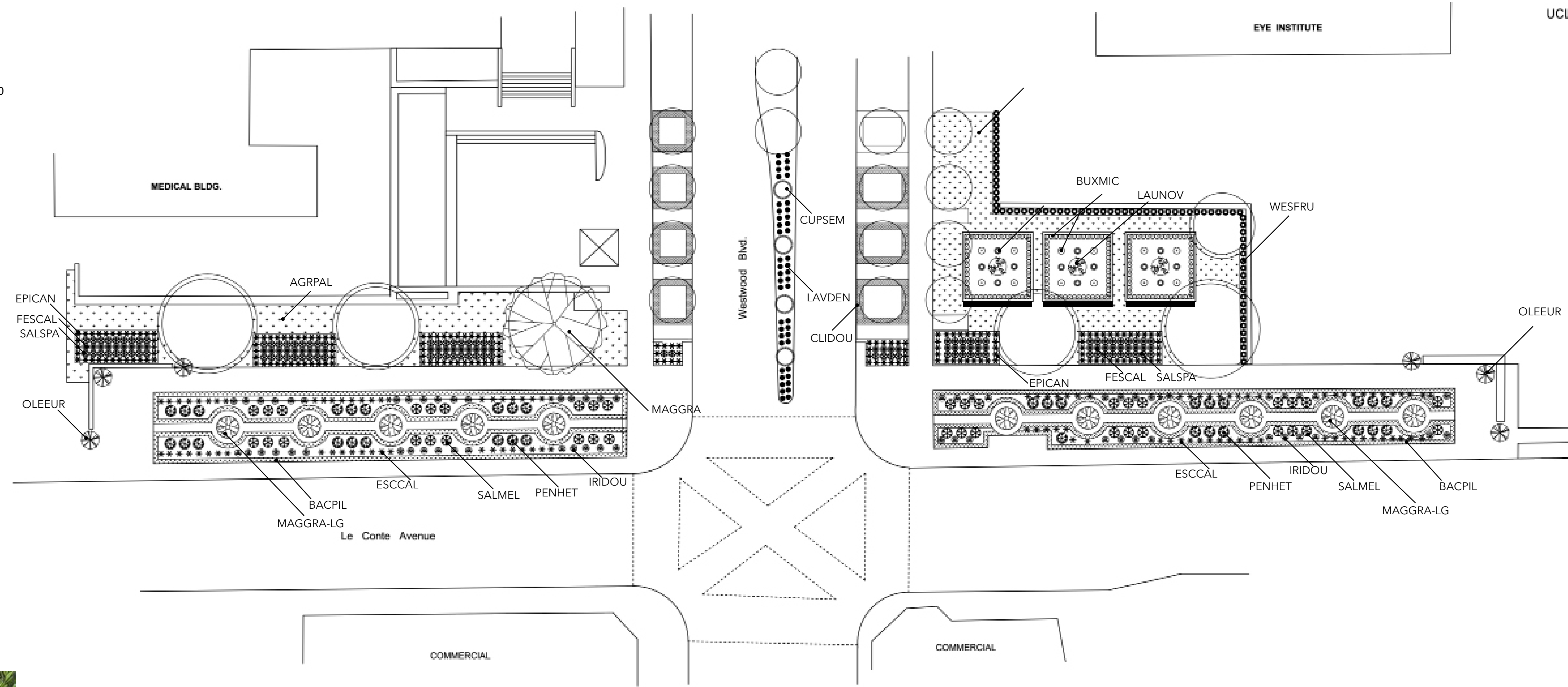
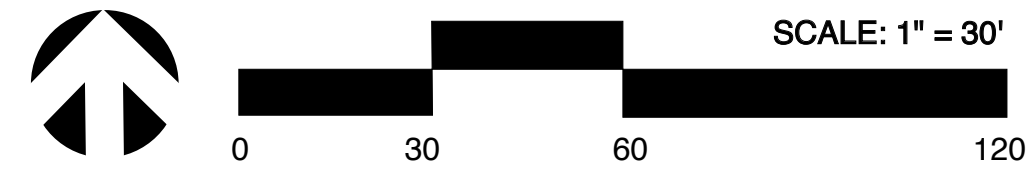


CONCEPT



PLANTING SCHEMATIC

UCLA Landscape Architecture Extension Program - Spring 2022
Landscape Design 5 - PLANTING DESIGN
Project #3 - UCLA South Entry Remodel
CONCEPTUAL PLANTING PLAN



Clinopodium douglasii
Yerba Buena



Cupressus sempervirens
Italian Cypress



Laurus novilis 'MonRik'
Dwarf Bay Laurel



Lavandula dentata
French Lavender



Rosa 'Iceberg'
Floribunda Rose, Iceberg Rose



Westringia fruticosa Morning Light
Morning Light Coast Rosemary



Agrostis pallens
Native Bentgrass



Buxus microphylla var. *japonica*
Japanese Boxwood



Epilobium canum 'Summer Snow'
Summer Snow California Fuchsia



Festuca californica
California Fescue



Iris douglasiana
Douglas Iris



Magnolia grandiflora
Southern Magnolia



Magnolia grandiflora 'Little Gem'
Little Gem Dwarf Magnolia



Salvia spathacea
Hummingbird Sage



Penstemon heterophyllus
Foothill Penstemon



Baccharis pilularis 'Pigeon Point'
Pigeon Point Coyote Bush



Salvia mellifera
Black Sage



Eschscholzia californica
California Poppy



Olea europea 'Montra'
Little Ollie Dwarf Olive

PLANT LEGEND

HYDROZONE	SYMBOL	CODE	BOTANICAL NAME	COMMON NAME	HEIGHT	WIDTH	WUCOLS	ORIGIN	REMARKS
Center Median		CLIDOU	<i>Clinopodium douglasii</i>	Yerba Buena	3" - 7"	3' (spreading)	M	CA	
		CUPSEM	<i>Cupressus sempervirens</i>	Italian Cypress	40'	10'	L	Eastern Mediterranean	Establish strong entry/focal point, same as at Luskin Center
		LAVDEN	<i>Lavandula dentata</i>	French Lavender	2' - 3'	2'	L	Mediterranean	
Hedge Along Walls		WESFRU	<i>Westringia fruticosa</i> 'Morning Light'	Morning Light Coast Rosemary	3' - 4'	3' - 4'	L	Australia	Maintain as 2' - 3' wide hedge. Same as at Luskin Center.
Boxes		BUXMIC	<i>Buxus microphylla</i> var. <i>japonica</i>	Japanese Boxwood	3' - 5'	3' - 5'	M	Japan	Maintain as 2'x2' hedge around edges and 3' spherical at corners
		LAUNOV	<i>Laurus novilis</i> 'MonRik'	Dwarf Bay Laurel, Little Ragu Sweet Bay	6' - 8'	6' - 8'	M	Mediterranean (nursery cultivar)	
		ROSFLO	<i>Rosa</i> 'Iceberg'	Floribunda Rose, Iceberg Rose	3' - 12'	2' - 3'	M	Europe, W Asia (ssp./cultivars)	Same as at Luskin Center
Lawn		AGRPAL	<i>Agrostis pallens</i>	Native Bentgrass	4' - 2'	spreading	L	Western N. America, CA	Can tolerate foot traffic, may be mowed
		EPICAN	<i>Epilobium canum</i> 'Summer Snow'	Summer Snow California Fuchsia	3' - 1.5'	2' - 3'	L	CA	
		FESCAL	<i>Festuca californica</i>	California Fescue	1' - 3'	3'	L	CA	
		MAGGRA	<i>Magnolia grandiflora</i>	Southern Magnolia	40'	50' - 60'	H	Southeastern US	Used to match existing magnolia
Parkway		SALSIPA	<i>Salvia spathacea</i>	Hummingbird Sage	1' - 3'	1' - 3'	L	CA	
		BACPIL	<i>Baccharis pilularis</i> 'Pigeon Point'	Pigeon Point Coyote Bush	1' - 2'	spreading	L	CA	Trim to 2' wide
		ESCCAL	<i>Eschscholzia californica</i>	California Poppy	2'	2'	L	CA	
		IRIDOU	<i>Iris douglasiana</i>	Douglas Iris	2.5'	2'	L	CA	
		MAGGRA-LG	<i>Magnolia grandiflora</i> 'Little Gem'	Little Gem Magnolia	15' - 20'	8' - 10'	M	Eastern US	Used along Le Conte, prune so branches are not too low
		PENHET	<i>Penstemon heterophyllus</i>	Foothill Penstemon	3' - 5'	5'	L	CA	
Containers		OLEEUR	<i>Olea europaea</i> 'Montra'	Little Ollie Dwarf Olive	6' - 8'	6' - 8'	L	Mediterranean	Because every Mediterranean design needs olive trees