

LANDSCAPE DESIGN 5  
ARCH-X 472.5 - SPRING 2023  
06/14/2023

# UCLA South Entry Remodel

STUDENT - BRENNAN GROH  
INSTRUCTOR - PAMELA BRIEF

**NOTES:**

Sunset Zone 22

Lack of shade (> 6 hours of direct sun year round)

Notable traffic presence

Lack of places to sit/stay for students and other visitors from adjacent buildings





Low point on campus provides an opportunity for stormwater capture



Dominant existing turf area does not provide much beneficial use






Ex. Sycamore trees along Westwood Blvd begin to create an identity while providing shade



Street parking on Le Conte Ave could be better integrated into pedestrian circulation

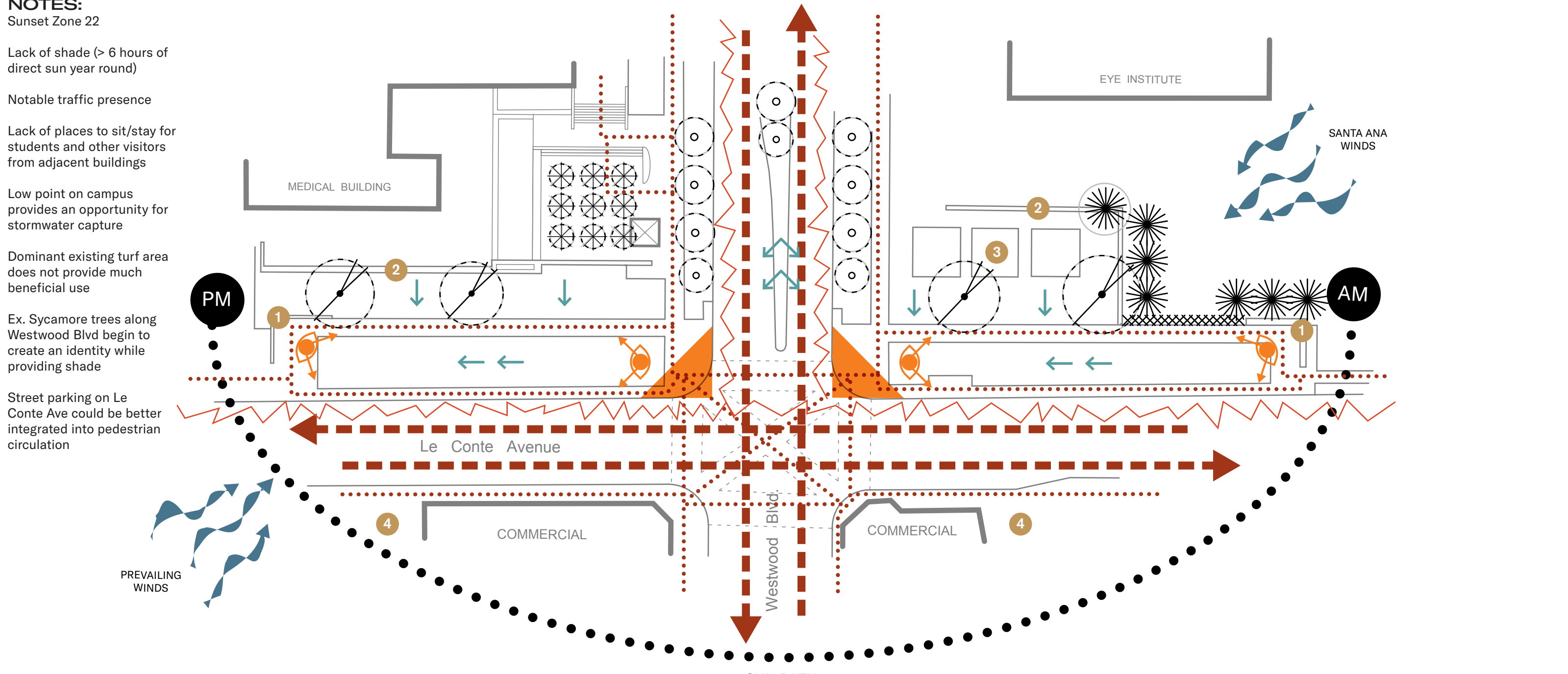
**LEGEND**

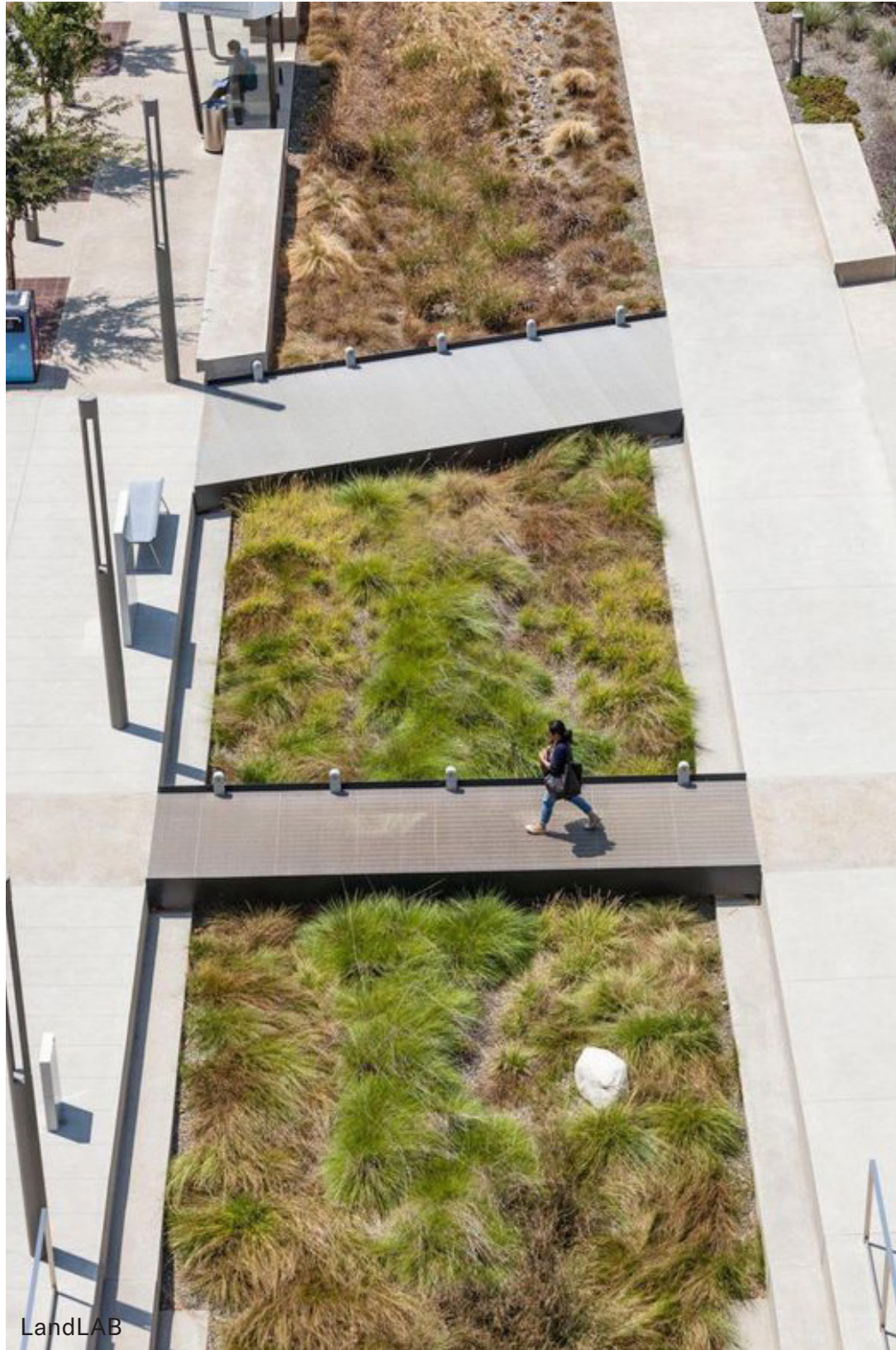
-  Vehicular Circulation
-  Pedestrian Circulation
-  Street Noise
-  45' Intersection Visibility Triangle

-  Strategic Pedestrian Views
-  Slope/Drainage Direction

-  Ex. *Ficus rubiginosa*
-  Ex. *Lingustrum japonica*
-  Ex. *Pinus canariensis*
-  Ex. *Planatus x hispanica*
-  Ex. *Washingtonia filifera*

-  Ex. UCLA Brick Signage/Seating
-  Ex. Brick Screening Walls
-  Ex. Brick Planters
-  Public Parking





LandLAB



CMG



Las Pilitas Nursery

**ENVIRONMENTAL HEALTH**

Preserve water by removing resource heaving turf and replacing it with climate appropriate plants with a focus on those that represent historic and cultural native plant communities.

Provide opportunities to capture, filter, and infiltrate stormwater to mitigate runoff and encourage groundwater recharge.

Welcome wildlife and pollinators back to campus through the use of a native plant palette.



Nicole Franzen



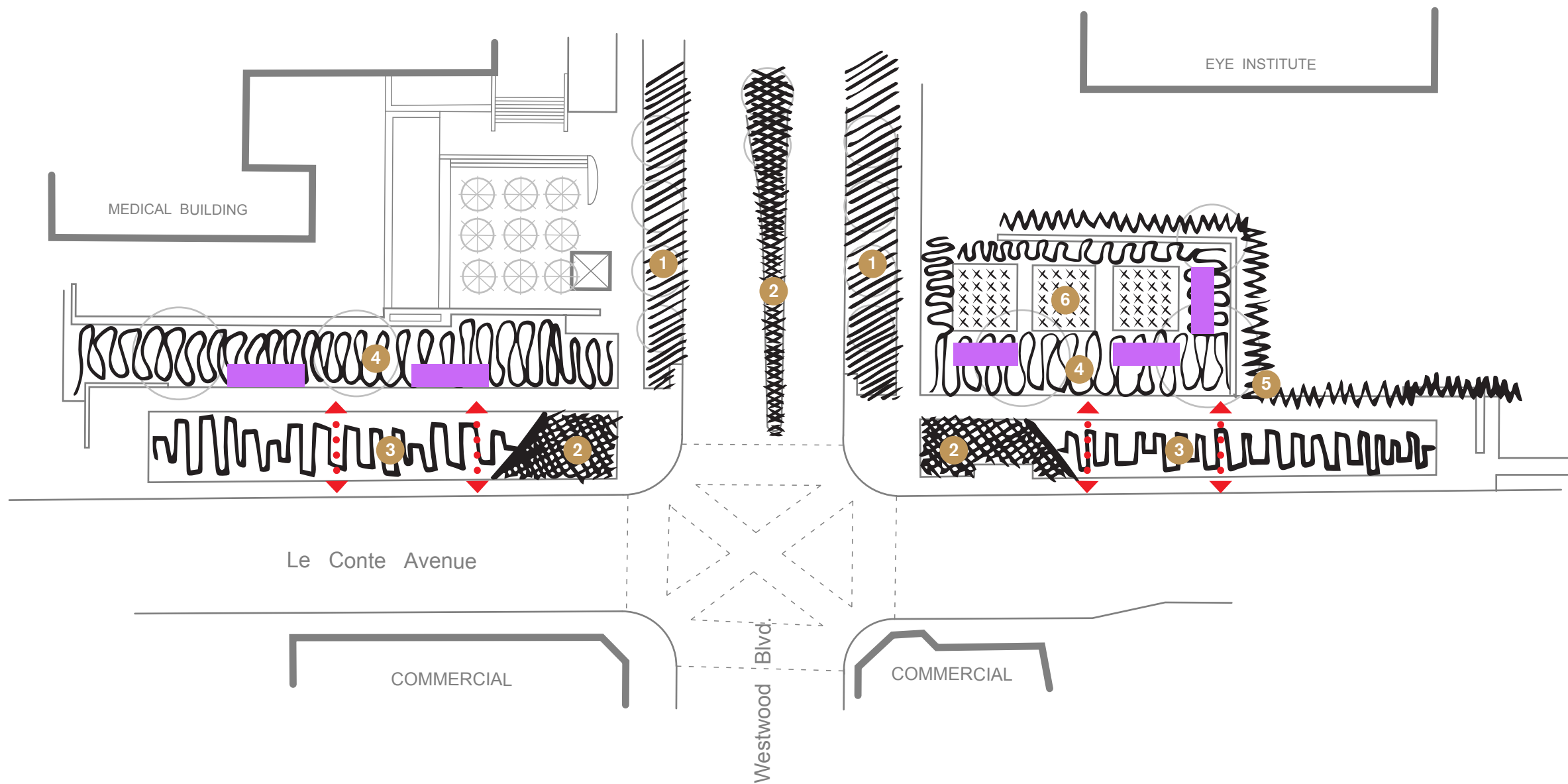
Pacific Horticulture

**COMMUNITY VITALITY**









Integrate a network of flexible spaces, enveloped and softened by planting, for both students and visitors of surrounding businesses to linger, stay, and study.

Enhance the human experience by improving pedestrian circulation, buffering street edge conditions, and increasing the amount of shade on site.

Create opportunities for environmental and cultural education and stewardship through a native plant palette and a culturally significant physic garden.

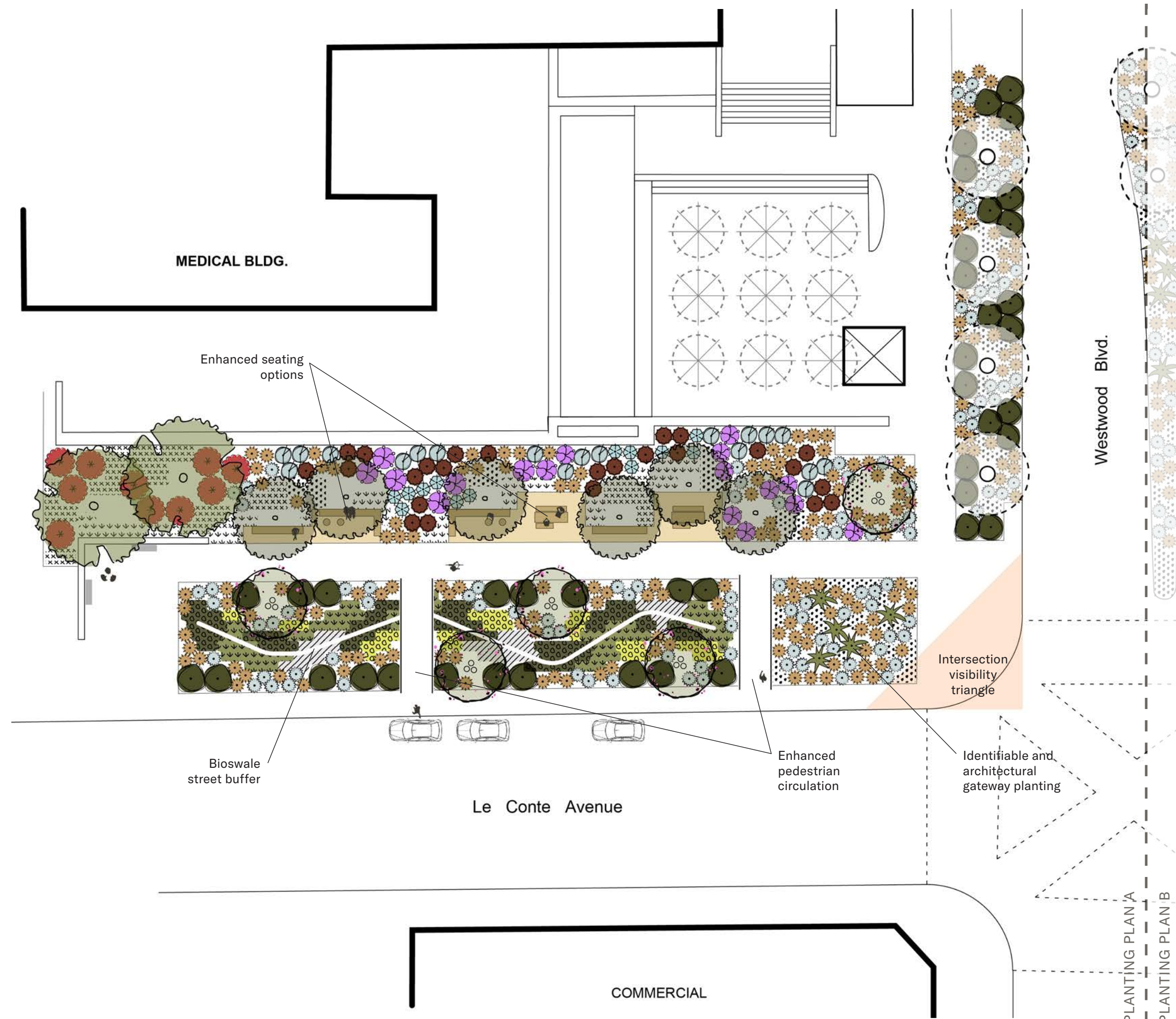


LEGEND

-  Enhanced Pedestrian Circulation
-  Enhanced Seating Areas
-  1 Preserve and Enhance Existing Conditions
-  2 Identifiable Gateway Planting
-  3 Bioswale
-  4 Dry Woodland/Coastal Sage Scrub
-  5 Buffer/Screening
-  6 Physic Garden

SCALE: 1" = 60'



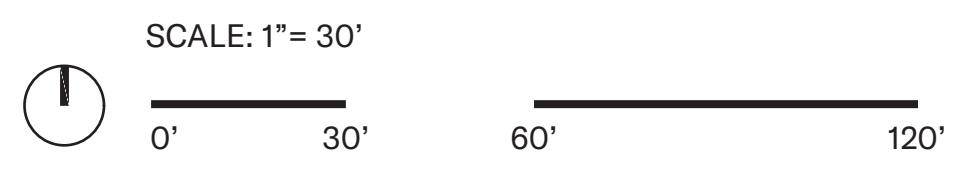



KEY MAP

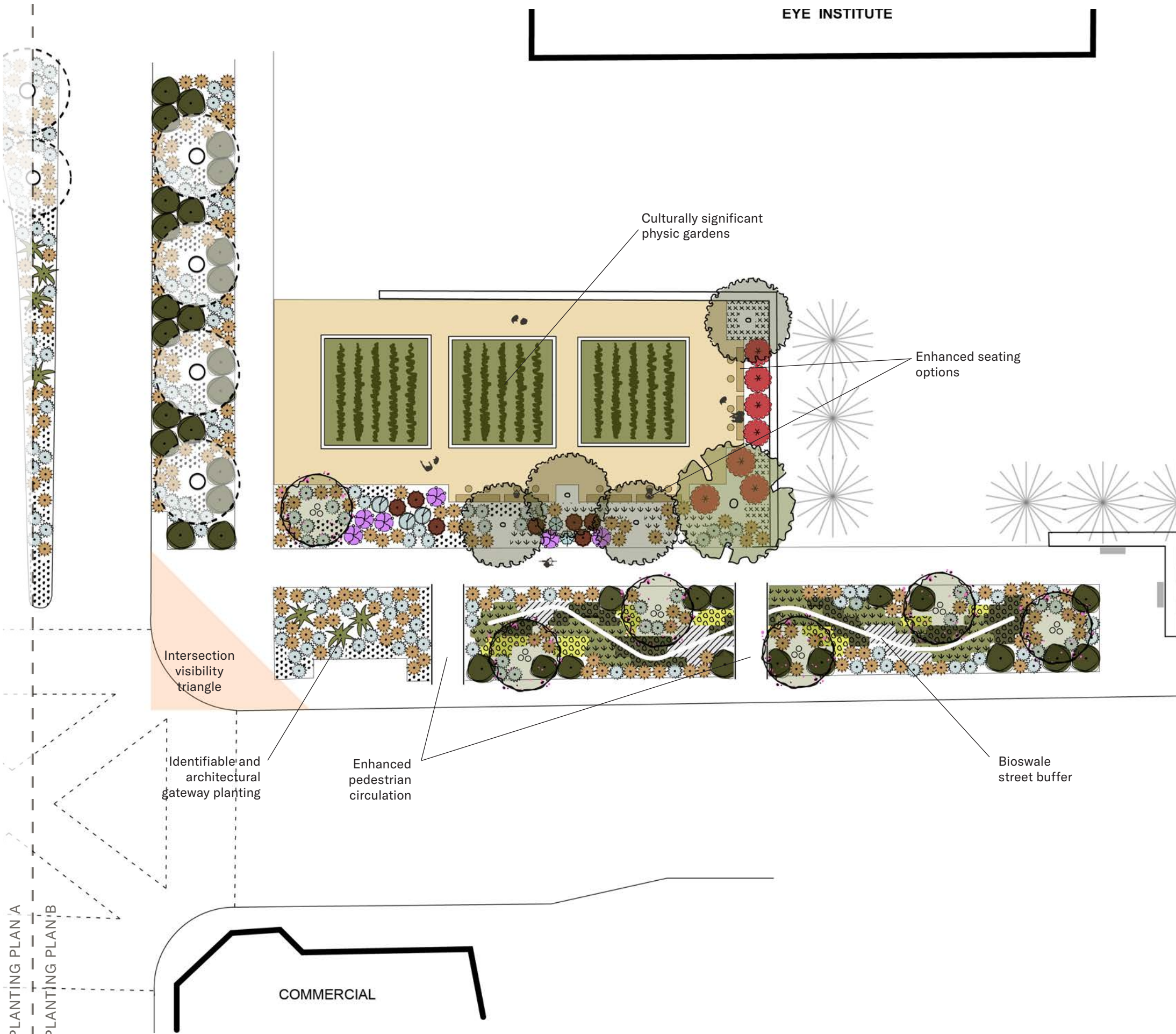
NTS

**LEGEND**

- |  |   |
|--|---|
| <i>Achillea millefolium</i><br>Common Yarrow                           | <i>Juncus patens</i><br>Common Rush                               |
| <i>Agave vilmoriniana</i><br>Octopus Agave                             | <i>Muhlenbergia rigens</i><br>Deergrass                           |
| <i>Artemisia californica</i><br>California Sagebrush                   | <i>Ribes viburnifolium</i><br>Catalina Currant                    |
| <i>Baccharis pilularis 'Pigeon Point'</i><br>Dwarf Coyote Brush        | <i>Salvia apiana</i><br>White Sage                                |
| <i>Carex tumulicola</i><br>Berkeley Sedge                              | <i>Salvia melifera</i><br>Black Sage                              |
| <i>Elymus condensatus 'Canyon Prince'</i><br>Canyon Prince Wild Rye    | <i>Salvia spathacea</i><br>Hummingbird Sage                       |
| <i>Epilobium canum 'Summer Snow'</i><br>Summer Snow California Fuchsia | <i>Solidago velutina ssp. californica</i><br>California Goldenrod |
| <i>Eriogonum fasciculatum</i><br>California Buckwheat                  | <i>Stipa pulchra</i><br>Purple Needlegrass                        |



EYE INSTITUTE

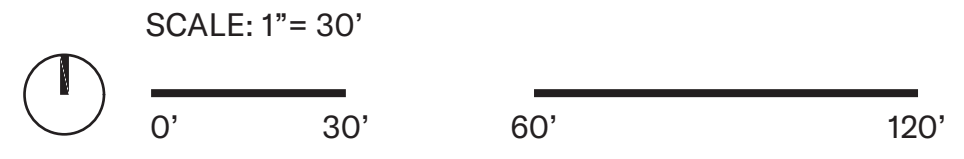


KEY MAP

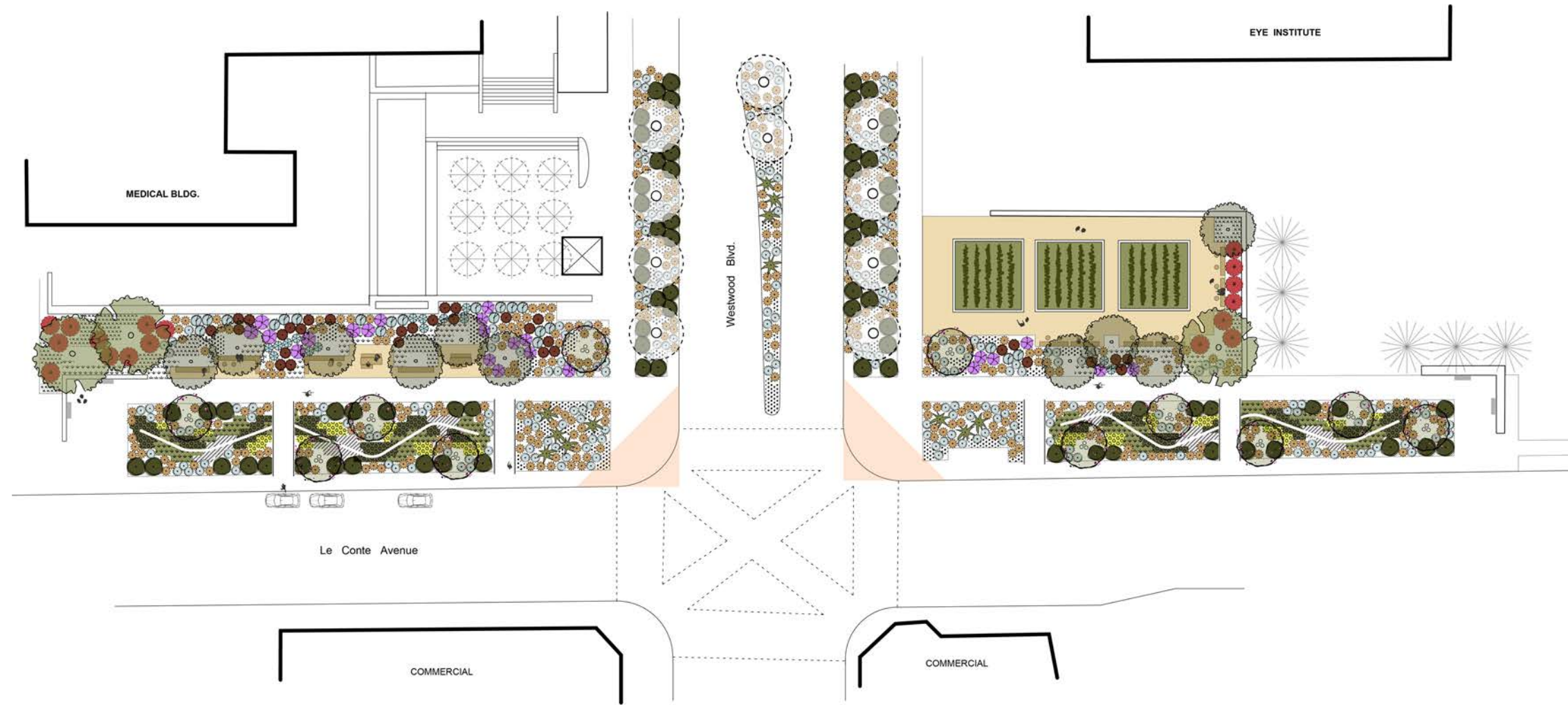
NTS

LEGEND

- |  |  |
|--|--|
| <i>Achillea millefolium</i><br>Common Yarrow                           | <i>Juncus patens</i><br>Common Rush                                      |
| <i>Agave vilmoriniana</i><br>Octopus Agave                             | <i>Muhlenbergia rigens</i><br>Deergrass                                  |
| <i>Artemisia californica</i><br>California Sagebrush                   | <i>Ribes viburnifolium</i><br>Catalina Currant                           |
| <i>Baccharis pilularis</i> 'Pigeon Point'<br>Dwarf Coyote Brush        | <i>Salvia apiana</i><br>White Sage                                       |
| <i>Carex tumulicola</i><br>Berkeley Sedge                              | <i>Salvia melifera</i><br>Black Sage                                     |
| <i>Elymus condensatus</i> 'Canyon Prince'<br>Canyon Prince Wild Rye    | <i>Salvia spathacea</i><br>Hummingbird Sage                              |
| <i>Epilobium canum</i> 'Summer Snow'<br>Summer Snow California Fuchsia | <i>Solidago velutina</i> ssp. <i>californica</i><br>California Goldenrod |
| <i>Eriogonum fasciculatum</i><br>California Buckwheat                  | <i>Stipa pulchra</i><br>Purple Needlegrass                               |



PLANTING PLAN A  
PLANTING PLAN B



**LEGEND**



*Achillea millefolium*  
Common Yarrow



*Agave vilmoriniana*  
Octopus Agave



*Artemisia californica*  
California Sagebrush



*Baccharis pilularis* 'Pigeon Point'  
Dwarf Coyote Brush



*Carex tumulicola*  
Berkeley Sedge



*Elymus condensatus* 'Canyon Prince'  
Canyon Prince Wild Rye



*Epilobium canum* 'Summer Snow'  
Summer Snow California Fuchsia



*Eriogonum fasciculatum*  
California Buckwheat



*Juncus patens*  
Common Rush



*Muhlenbergia rigens*  
Deergrass



*Ribes viburnifolium*  
Catalina Currant



*Salvia apiana*  
White Sage



*Salvia melifera*  
Black Sage



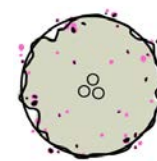
*Salvia spathacea*  
Hummingbird Sage



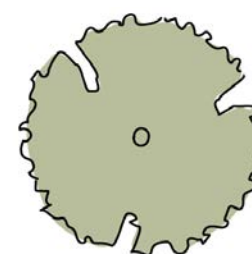
*Solidago velutina* ssp. *californica*  
California Goldenrod



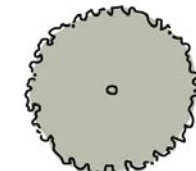
*Stipa pulchra*  
Purple Needlegrass



*Cercis occidentalis*  
Western Redbud



*Quercus agrifolia*  
Coast Live Oak



*Rhus lancea*  
African Sumac

SCALE: 1" = 60'



0' 60'

120' 240'

#	SCIENTIFIC NAME	COMMON NAME	APPROXIMATE HEIGHT/SPREAD	WUCOLS	WILDLIFE (SOURCE: CALSCAPE)	BLOOM COLOR/ SEASON	NOTES
1	<i>Achillea millefolium</i>	Common Yarrow	1-3' H, .5-1.5' W	L		Spring, Summer	Spreads by rhizomes
2	<i>Agave vilmoriniana</i>	Octopus Agave	3-4' H, 5-6' W	L		Infrequent	Native to Mexico
3	<i>Artemisia californica</i>	California Sagebrush	1-8' H, 4' W	VL		Spring, Summer, Fall	Fragrant
4	<i>Baccharis pilularis 'Pigeon Point'</i>	Dwarf Coyote Brush	1-2' H, 8-10' W	L		Fall	Shear in late winter to make denser
5	<i>Carex tumulicola</i>	Berkeley Sedge	8-12" H, 1-2' W	L		Spring	--
6	<i>Cercis occidentalis</i>	Western Redbud	12-20' H, 10-15' W	L		Winter, Spring	Winter deciduous
7	<i>Elymus condensatus 'Canyon Prince'</i>	Canyon Prince Wild Rye	2-3' H, 4-6' W	VL		Spring, Summer	Spreads by rhizomes
8	<i>Epilobium canum 'Summer Snow'</i>	Summer Snow California Fuchsia	1' H, 4' W	VL		Summer, Fall	Spreads by rhizome, Winter deciduous
9	<i>Eriogonum fasciculatum</i>	California Buckwheat	1-6' H, 4' W	VL		Spring, Summer, Fall	--
10	<i>Juncus patens</i>	Common Rush	1-3' H x 3' W	L		Spring, Summer	Spreads by rhizomes
11	<i>Muhlenbergia rigens</i>	Deergrass	4-5' H, 4' W	L		Spring	Can be pruned back
12	<i>Quercus agrifolia</i>	Coast Live Oak	60-80' H, 35' W	VL		Spring, Winter	--
13	<i>Rhus lancea</i>	African Sumac	30' H, 20-35' W	L		Summer	--
14	<i>Ribes viburnifolium</i>	Catalina Currant	2-3' H, 4-6' W	VL		Winter, Spring	Flowers followed by berries
15	<i>Salvia apiana</i>	White Sage	3' H, 4' W	VL		Winter, Spring, Summer	Fragrant, prune in cool season
16	<i>Salvia melifera</i>	Black Sage	3-4' H, 6' W	VL		Winter, Spring, Summer	Fragrant, prune to 1/3 in cool season
17	<i>Salvia spathacea</i>	Hummingbird Sage	1-3' H, 3' W	L		Winter, Spring, Summer	Slightly fragrant
18	<i>Solidago velutina ssp. californica</i>	California Goldenrod	1.5-5' H, spreading	VL		Summer, Fall	--
19	<i>Stipa pulchra</i>	Purple Needlegrass	3.5' H, 1.5' W	VL		Spring	Establishes quickly, deep root system (to 20')





1. *Achillea millefolium*  
Common Yarrow



2. *Agave vilmoriniana*  
Octopus Agave



3. *Artemisia californica*  
California Sagebrush



4. *Baccharis pilularis* 'Pigeon Point'  
Dwarf Coyote Brush



5. *Carex tumulicola*  
Berkeley Sedge



6. *Cercis occidentalis*  
Western Redbud



7. *Elymus condensatus* 'Canyon Prince'  
Canyon Prince Wild Rye



8. *Epilobium canum* 'Summer Snow'  
California Fuchsia



9. *Eriogonum fasciculatum*  
California Buckwheat



10. *Juncus patens*  
Common Rush



11. *Muhlenbergia rigens*  
Deergrass



12. *Quercus agrifolia*  
Coast Live Oak



13. *Rhus lancea*  
African Sumac



14. *Ribes viburnifolium*  
Catalina Currant



15. *Salvia apiana*  
White Sage



16. *Salvia melifera*  
Black Sage



17. *Salvia spathacea*  
Hummingbird Sage



18. *Solidago velutina* ssp. *californica*  
California Goldenrod



19. *Stipa pulchra*  
Purple Needlegrass

PLANT IMAGE CREDITS	Theodore Payne	Selectree
(WIP)	Las Pilitas Nursery	California Native Plant Society
	Calscape	Robert Perry
	Calflora	