

INSTRUCTOR: PAMELA BRIEF
LANDSCAPE DESIGN: ARCH-X 472.5



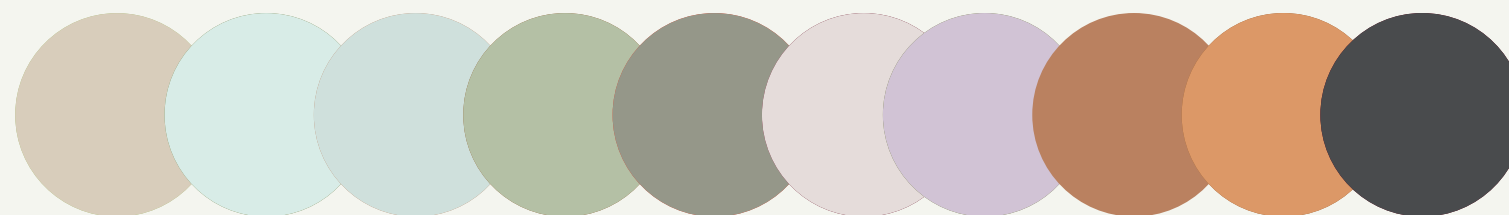
1834 16TH STREET
SANTA MONICA CALIFORNIA 90404



AIMEE KIRBY

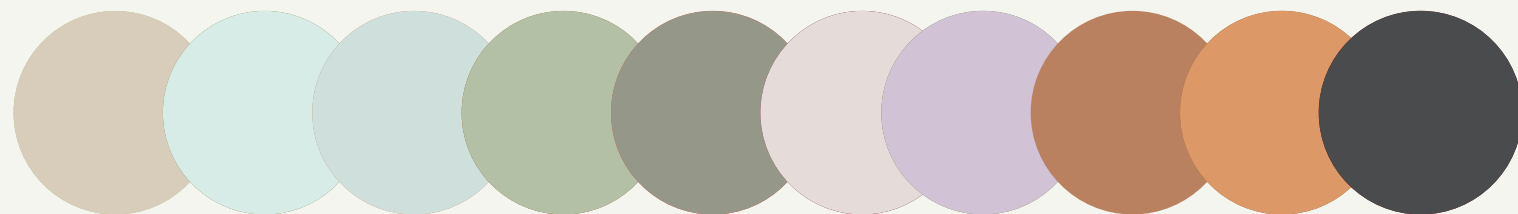
DIRECTION

ENVELOPING - MODERN - ETHEREAL



DIRECTION

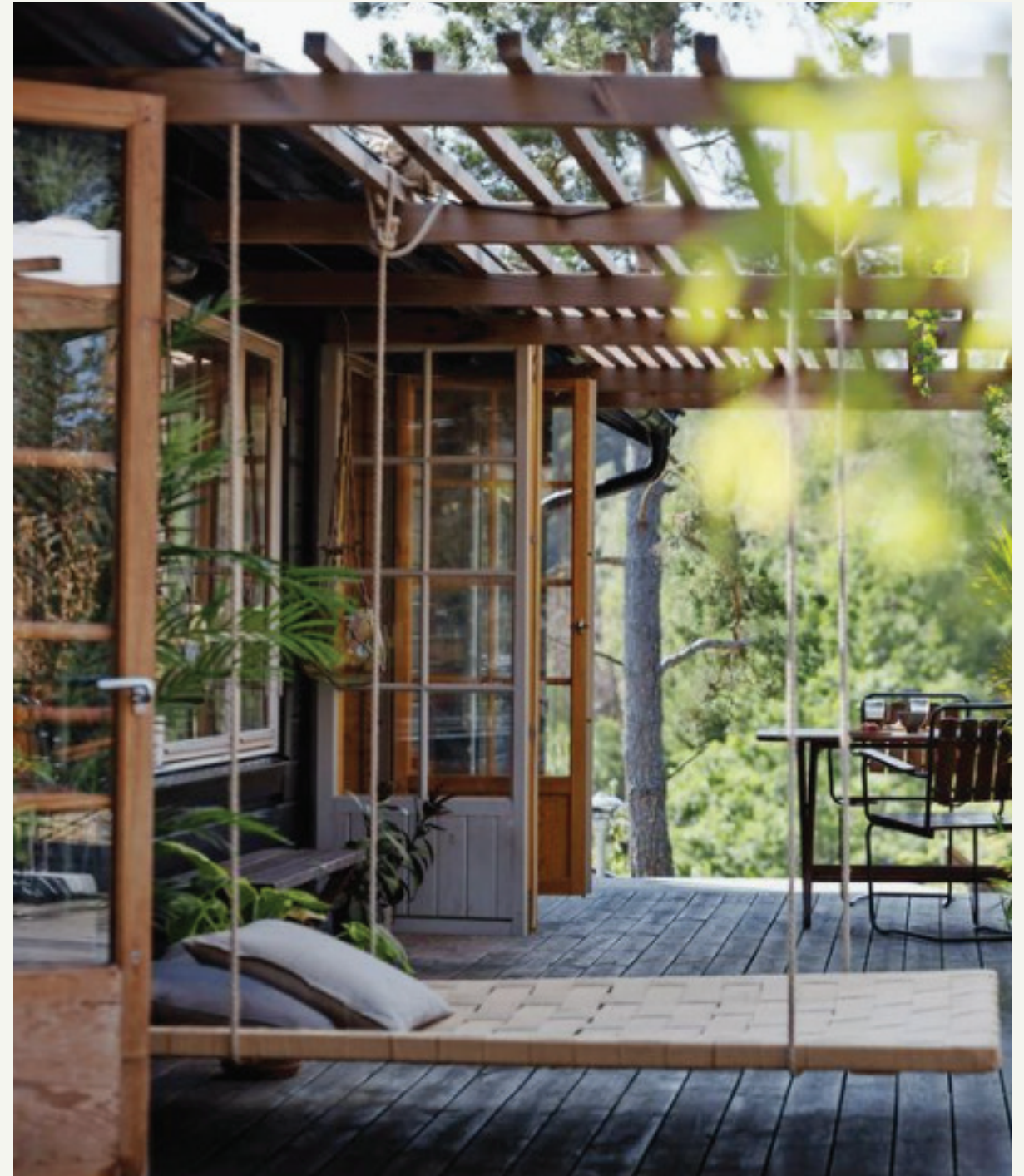
ENVELOPING - MODERN - ETHEREAL



DIRECTION

ENVELOPING - MODERN - ETHEREAL

1834 16TH STREET SANTA MONICA CALIFORNIA

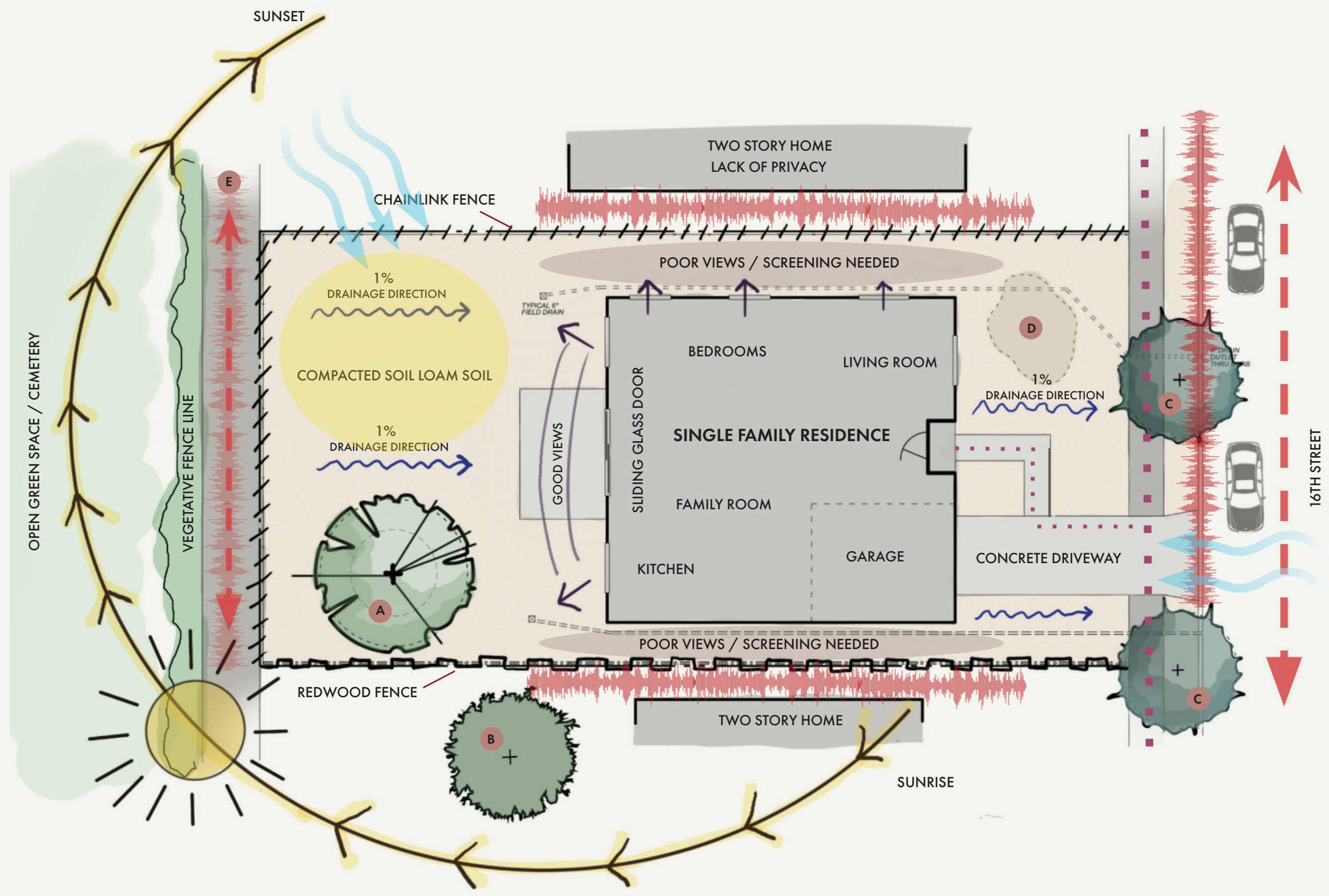


1834 16TH STREET



THIS GARDEN IS A DESTINATION FOR A MODERN FAMILY. A PLACE WHERE RESPITE AND PLAY COME TOGETHER, AS WELL AS A DIVERSE PLANT PALETTE THAT PROMOTES LOCAL HABITAT. THE LUSH FRONT RAIN GARDEN INVITES YOU TO ENTER FROM THE STREET, IN ADDITION THE CISTERN FED WATER FEATURE THAT BLOCKS NOISE FROM ADJACENT NEIGHBORHOODS. PROCEED TO MAKE YOUR WAY THROUGH THE TRELLED SIDE YARD AND YOU ARE IMMERSSED IN THE LATHYRUS VESTTITUS AND CLEMATS LIGUSTICIFOLIA VINES. A SHADY RESPITE THAT ALLOWS PRIVACY FROM THE TWO STORY BUILDINGS ADJACENT ON BOTH SIDES. YOU ARRIVE AT THE CONFLUENCE OF THE VEGGIE GARDEN AND PLAY AREA. LOOK AROUND! THE PLAY AREA IS SOFT AND INVITING WITH CAREX PRARACELIS AS THE SOFT LAWN. PARENTS CAN LOUNGE AND OBSERVE PLAY TIME WHILE ENJOYING THE GAS FIREPLACE AND CONVERSATION. A WONDERFUL, VISUAL PUNCTUATION POINT FROM THE EXIT OF THE WEST SLIDING GLASS DOORS. AN OAK UNDER-STORY WITH A YOGA AREA IS FOUND TO THE SOUTH WEST, A PLACE FOR PARENTS TO ALIGN AND BOND TOGETHER . THE VIEW OF THE UNDER-STORY PLANTS, LEYMUS CONDENSATUS, AND MULENBURGIA DUBIA ARE LUSH AND GLOW IN THE EVEN IN THE SHADOWS OF THE UNDER-STORY. A VEGGIE GARDEN AT THE SUNNY AREA OF THE NORTHWEST PROVIDES AMPLE KITCHEN INSPIRATION, AS WELL AS THE HERBS THAT SURROUND THE BANQUETTE SEATING OUTSIDE ON THE KITCHEN ADJACENT DECK. DON'T FORGET THE FUN FAMILY SWING WITH IS SURROUNDED BY PLANTERS, NOT ONLY CAN YOU HAVE SOME FUN SWINGING AMONG THE BORDER OF PLANTS, THIS ALSO PROVIDES SOME PRIVACY TO THE ADJACENT BEDROOM AREAS. THE SOUTH ENTRANCE OF THE GARDEN IS A TERTIARY PATHWAY WITH AN EMPHASIS ON A DOG RUN. THE TRASH RECEPTACLE IS ADJACENT TO THE DRIVE WAY FOR EASE TO OF TAKE AWAY. ALL TOGETHER THESE ELEMENTS PROVIDE A FUNCTIONAL AND FUN GARDEN EXPERIENCE FOR THE MODERN FAMILY.

SITE ANALYSIS



SUNSET ZONE: 24

- VEHICULAR CIRCULATION
- PEDESTRIAN CIRCULATION
- WINDS
- NOISE
- DRAINAGE DIRECTION
- VIEWS
- SUN
- SHADE

- A** - Protected *Quercus agrifolia*
- B** - Tall Neighbor Tree
- C** - Existing Deodar Cedars
- D** - Poor Subsurface Conditions
- E** - Alley



SUN STUDY

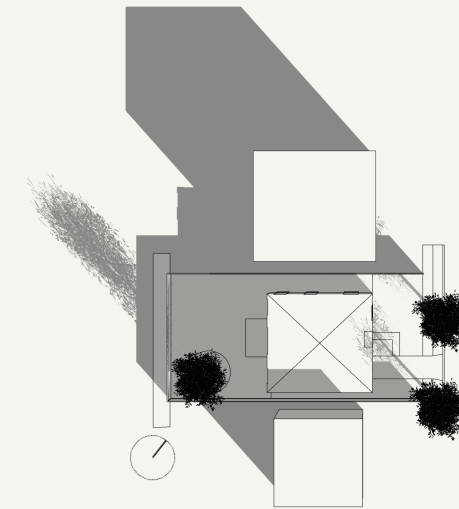
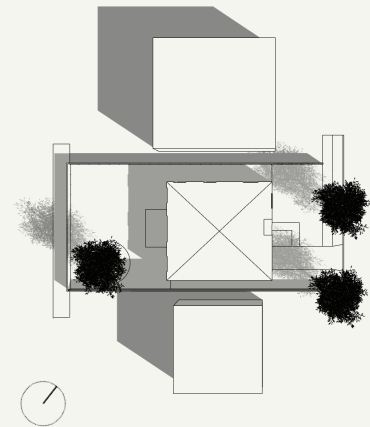
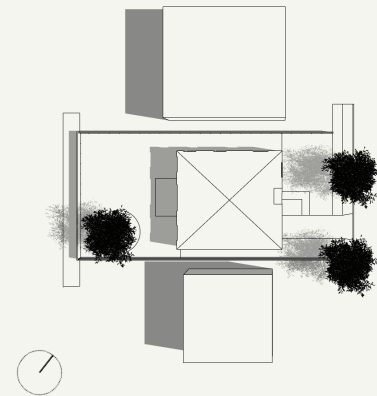
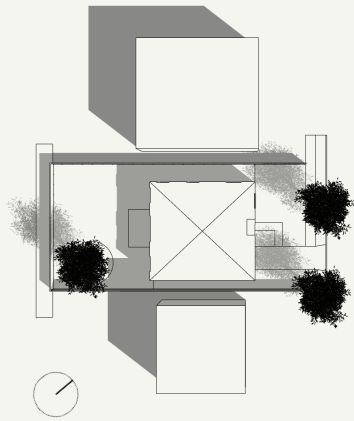
**MARCH 21
SPRING EQUINOX**

**JUNE 21
SUMMER SOLSTICE**

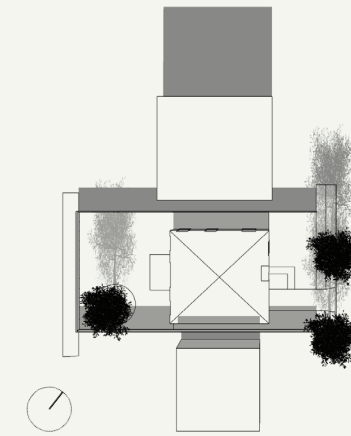
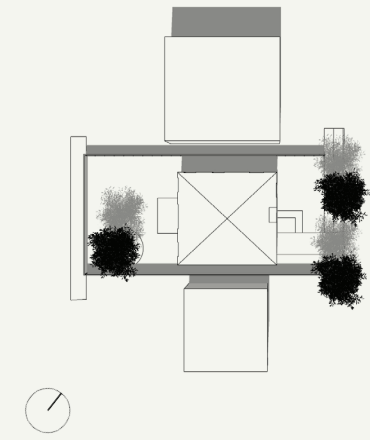
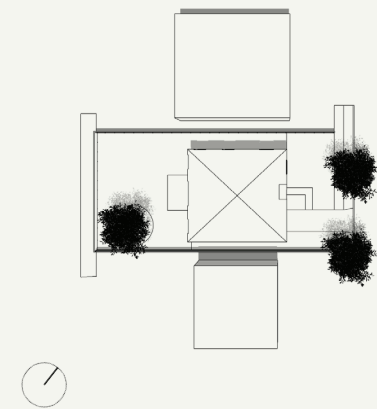
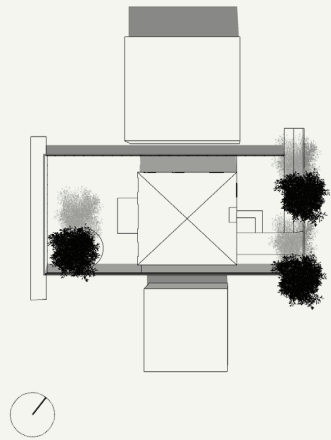
**SEPTEMBER 21
AUTUMN EQUINOX**

**DECEMBER 21
WINTER SOLSTICE**

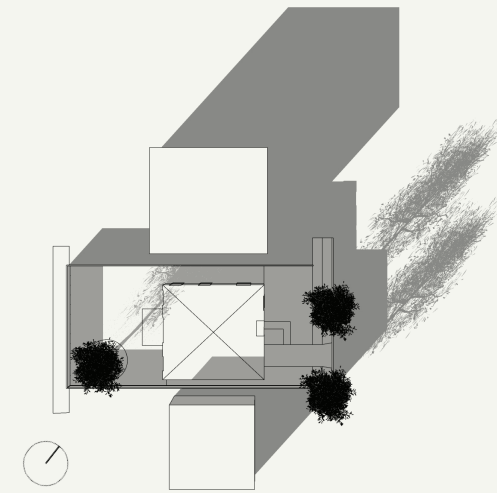
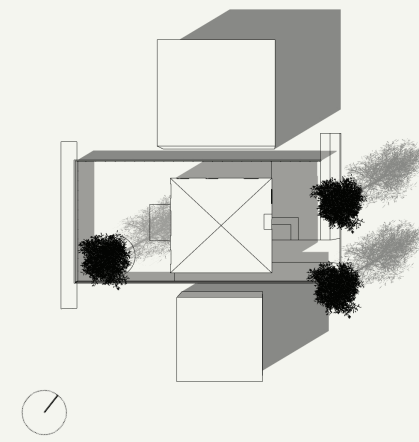
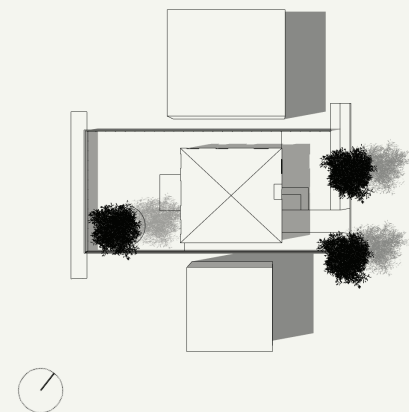
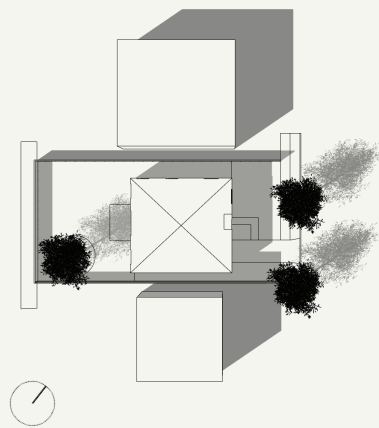
9:00AM



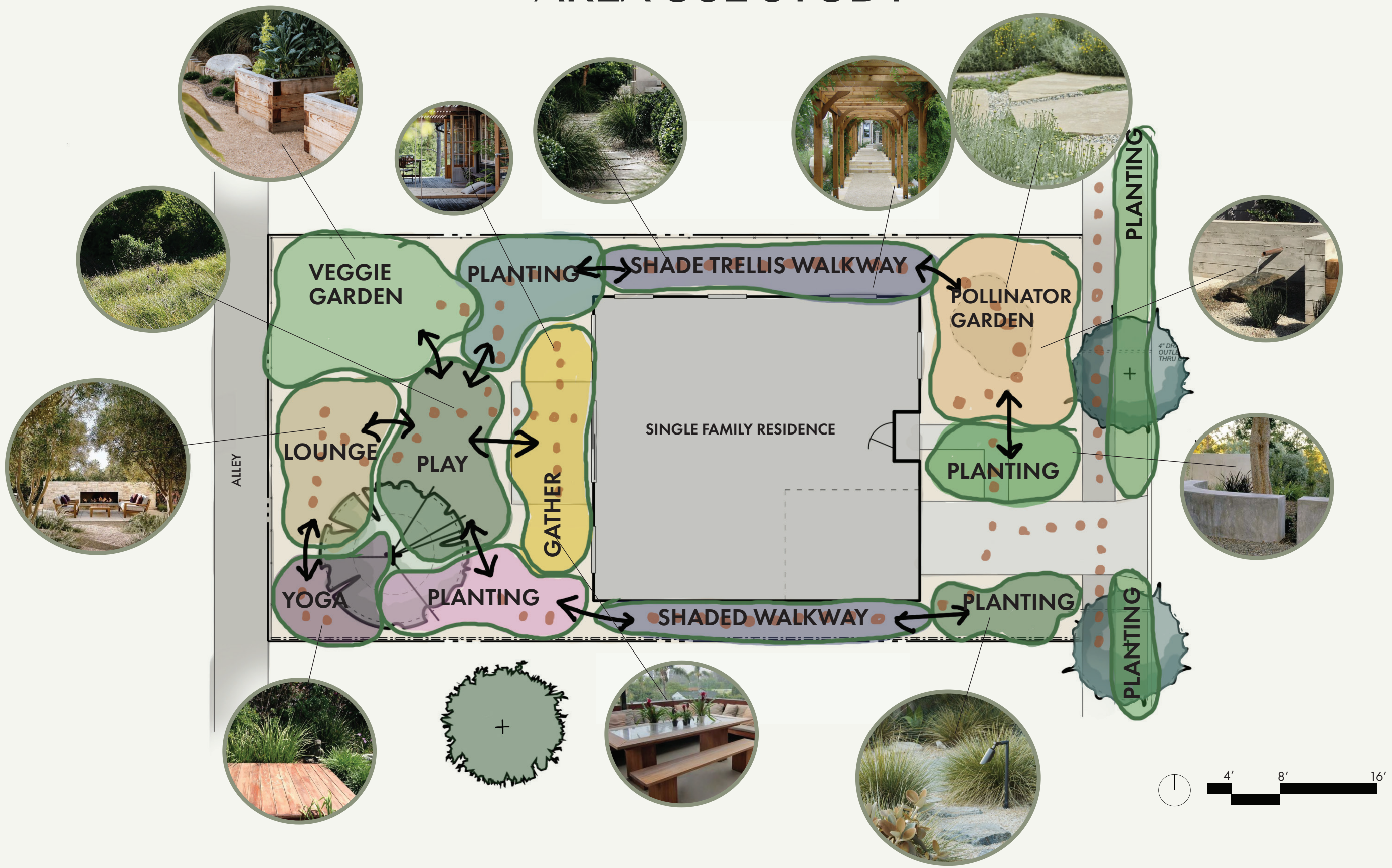
12:00PM



3:00PM

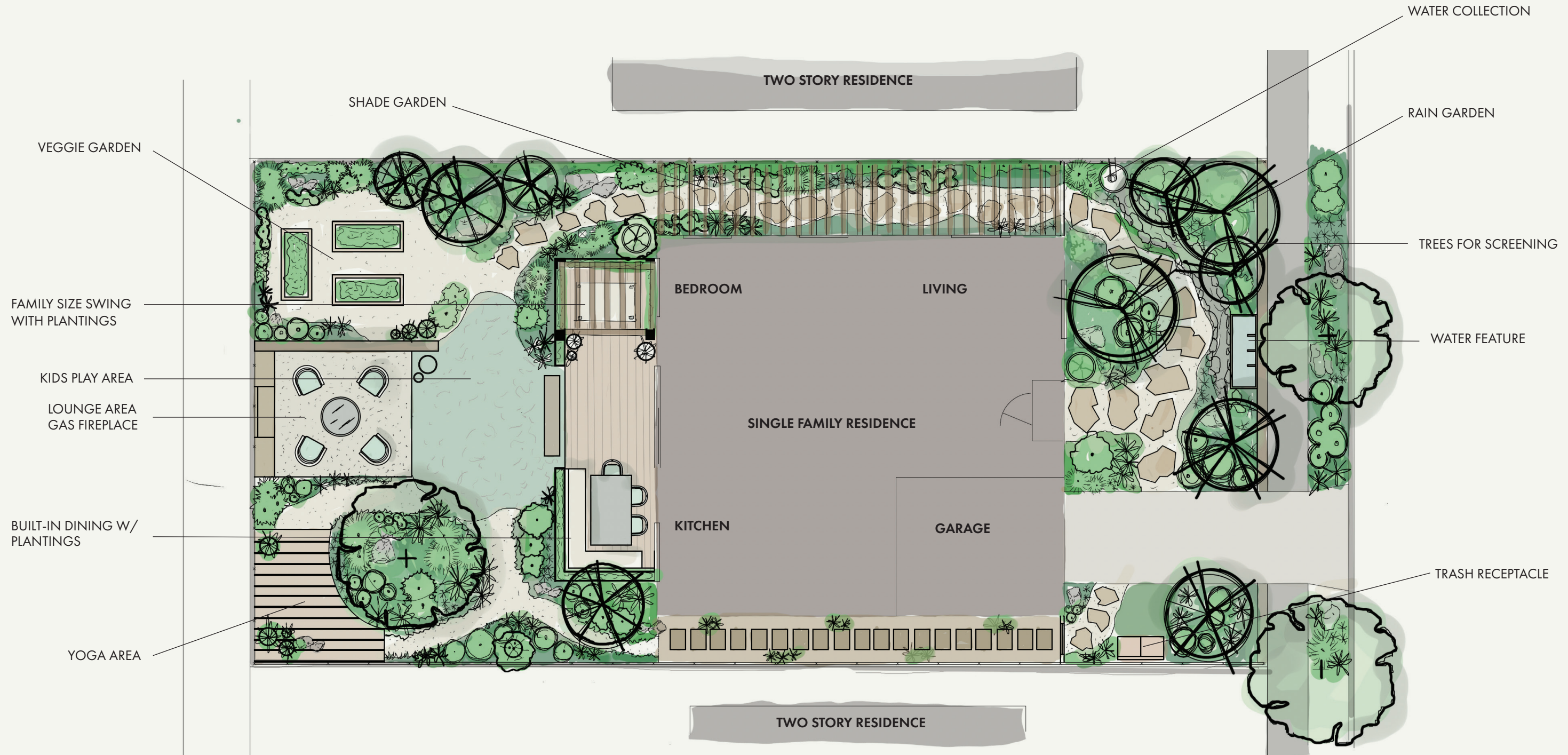


AREA USE STUDY

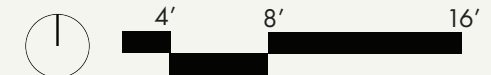


PLANTING CONCEPT

1834 16TH STREET SANTA MONICA CALIFORNIA



LOW HEIGHT
 MEDIUM HEIGHT
 TALL HEIGHT



PLANT LIST

		LATIN NAME	COMMON NAME	HEIGHT / WIDTH	WUCOLS	ETO	SOIL	BLOOM
M	1	<i>Acanthus Mollis</i> *	Bear's reeches	H: 3-4' W 2-3'	Low, SMR	< 10 %	Well Drained	White / Spring Summer
M	2	<i>Agave attenuata</i>	Fox Tail Agave	H4-5' W 6-8'	Low, SMR	< 10 %	Well Drained	Yellow / Infrequent
T	3	<i>Arcostahpholysis 'Howard McMinn'</i> *	Manzantia 'Howard McMinn'	H' 12'-16' W 6'-8'	Low, SMR	< 10 %	Well Drained	Off White / Winter-Spring
L	4	<i>Arctostaphylos 'Pacific Mist'</i> *	Manzanita 'Pacific Mist'	H: 2-3' W: 6-1'	Low	< 10 %	Well Drained	White / Winter
M	5	<i>Artemesia californica</i> *	California sagebrush	H: 3-4' W: 3-4'	Low, SWR	< 10 %	Well Drained	Insignificant
M	6	<i>Asclepias speciosa</i> *	Showy Milkweed	H: 2-3' W: Running	Low, SWR	< 10 %	Well Drained	Pink / Spring - Summer
L	7	<i>Carex praefracilis</i> *	Califronia Field Sedge	H: <1' W: Running	Low,SWR	< 10 %	Well Drained	Brown / Spring
M	8	<i>Carpenteria californica</i> *	Bush Anemone	H: 6-8' W: 3-5'	Low	< 10 %	Well Drained	White / Winter -Spring
M	9	<i>Ceanothus rigidus 'Snowball'</i> *	Ceanothus 'Snowball'	H' 3'-5' W 3'-5'	Low, SWR	< 10 %	Well Drained	White / Winter -Spring
T	10	<i>Cercis occidentalis</i> *	Western Redbud	H: 12-20' W: 10-15'	Low, SWR	< 10 %	Well Drained	Pink / Spring - Summer
L	11	<i>Clematis ligusticifolia</i> *	Old Mans Beard	H: < 1' W: Spreading	Low,SWR	< 10 %	Well Drained	White Spring
M	12	<i>Erigonium Giganteum</i> *	Giant California Buckwheat	H: 4-8' W: 6-8'	Low,SWR	< 10 %	Well Drained	White / Spring - Fall
M	13	<i>Fatsia Japonica</i>	Japanese Arilia	H: 6-10' W: 4-6'	Low, SWR	< 10 %	Well Drained	White / Summer - Fall
T	14	<i>Feijoa sellowiana</i>	Pine Apple Guava	H: 12-20' W: 10-15'	Low, SWR	< 10 %	Well Drained	Pink / Spring - Summer
M	15	<i>Gaura Lindheimeri</i>	White Gaura	H: 3-4' W: 1-2'	Low, SWR	< 10 %	Well Drained	White / Spring - Fall
M	16	<i>Kalanchoe bahrensis</i>	Elephant Ear	H: 10-16' W: 6-12'	Low, SWR	< 10 %	Well Drained	Green Yellow / Winter
L	17	<i>Lathyrus vestitus</i> *	Pacific Pea	H: <1' W: Spreading	Low	< 10 %	Well Drained	Silver Blue / Spring
M	18	<i>Leymus condensatus</i> *	Giant Wild Rye	H: 2-3' W: Running	Low, SWR	< 10 %	Well Drained	Wheat / Summer
M	19	<i>Malacothamnus fasciculatus</i> *	White Bush Mallow	H: 4-5' W: 4-5'	Low, SWR	< 10 %	Well Drained	White / Spring - Summer
M	20	<i>Monardella villosa</i> *	Coyote Mint	H: 1-2' W: 2-3'	Low, SWR	< 10 %	Well Drained	Lavender / Summer
M	21	<i>Mulenbergia Dubia</i> *	Pine Muhly	H: 2-3' W: Clumping	Low, SWR	< 10 %	Well Drained	Tan / Summer - Fall
T	22	<i>Olea Europea 'Wilsonii'</i>	Wilson Olive	H: 15-25' W: 15-20'	Low, SWR	< 10 %	Well Drained	Insignificant / Spring
T	23	<i>Ozothamnus diosmifolius 'Radiance'</i>	White Rice Flower	H: 3-5' W: 2-4'	Low, SWR	< 10 %	Well Drained	White/ All seasons

* - CALIFORNIA NATIVE



LOW HEIGHT



MEDIUM HEIGHT



TALL HEIGHT

PLANT LIST

		LATIN NAME	COMMON NAME	HEIGHT / WIDTH	WUCOLS	ETO	SOIL	BLOOM
M	24	<i>Phlomis fruticosa</i>	Jerusalem Sage	Ht: 3-4' W: 3-4'	Low, SMR	< 10 %	Well Drained	Yellow / Spring - Summer
M	25	<i>Perovskia 'Blue Spire'</i>	Russian Sage	H: 3-4' W: 2-3'	Low	<10%	Well Drained	Purple / Summer - Fall
M	26	<i>Salvia 'Bees Bliss' *</i>	Salvia 'Bees Bliss'	H: 1-2' W: 6-8'	Low, SMR	< 10 %	Well Drained	Lavender / Spring
M	27	<i>Salvia apiana *</i>	White Sage	H: 4-5' W: 4-5'	Low, SMR	< 10 %	Well Drained	Off White / Spring - Summer
T	28	<i>Sambucus nigra *</i>	Black Elderberry	H: 8-12' W: 8-12'	Low, SWR	< 10 %	Well Drained	White / Summer
L	29	<i>Sisyrinchium bellum *</i>	Blue Eyed Grass	H' 6'-12' W: Clumping	Low, SWR	< 10 %	Well Drained	Purple / Spring
L	30	<i>Verbena de la mina *</i>	Verbena	H: 1-2' W: 3-4'	Low, SWR	< 10 %	Well Drained	Purple / Spring - Summer

* - CALIFORNIA NATIVE



LOW HEIGHT



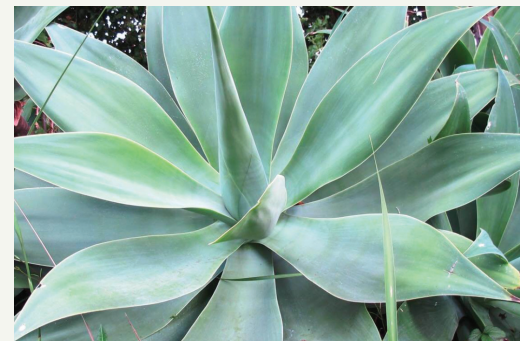
MEDIUM HEIGHT



TALL HEIGHT



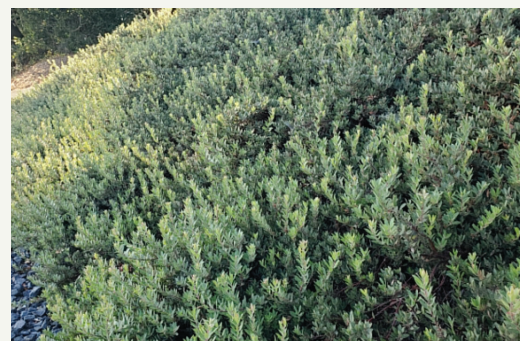
1. Acanthus Mollis



2. Agave attenuata



3. Arcostaphylos 'Howard McMinn'



4. Arcostaphylos 'Pacific Mist'



5. Artemesia californica



6. Asclepias speciosa

PLANT LIST



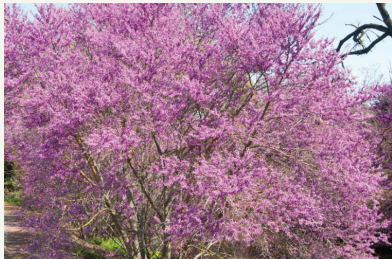
7. Carex praeegracilis



8. Carpenteria californica



9. Ceanothus rigidus



10. Cercis occidentalis



11. Clematis ligusticifolia



12. Erigonium Giganteum



13. Fatsia Japonica



14. Feijoa sellowiana



15. Gaura Lindheimeri



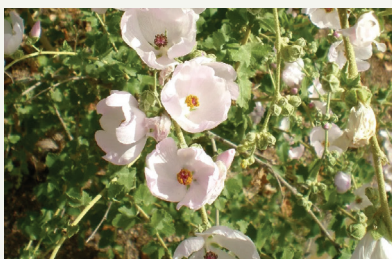
16. Kalanchoe bahrensis



17. Lathyrus vestitus



18. Leymus condensatus



19. Malacothamnus fasciculatus



20. Monardella villosa



21. Muhlenbergia Dubia



22. Olea Europea 'Wilsonii'



23. Ozothamnus diosmifolius



24. Phlomis fruticosa



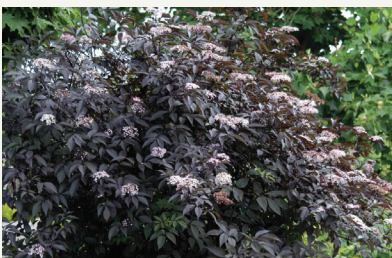
25. Salvia 'Bees Bliss'



26. Salvia apiana



27. Pervoskia 'blue spire'



28. Sambucus nigra



29. Sisyrinchium bellum



30. Verbena de la mina

1864 16TH STREET
SANTA MONICA CALIFORNIA 90404
AIMEE KIRBY