

# JOHNNY CARSON PARK EXPANSION

Integrating River and Park  
in an Urban World

ARCH-X 472.9  
Landscape Design 4:  
Environmental Analysis and Planning  
Emily Gabel-Luddy  
Grace Pan | Callie Kurtis | Eric de la Hoya



## Table of Contents

Project Overview . . . . .	3
History of Burbank and Johnny Carson Park. . . . .	4
Project Zones . . . . .	5
Inspiration . . . . .	6

### Site Analysis

Land Use Context. . . . .	7
Circulation and Access Points . . . . .	8
Tree Canopy . . . . .	9
Climate . . . . .	10
Slopes and Flood Risk . . . . .	11
Wildlife Habitat . . . . .	12
Opportunities and Constraints . . . . .	13

### Reimagined Site Design

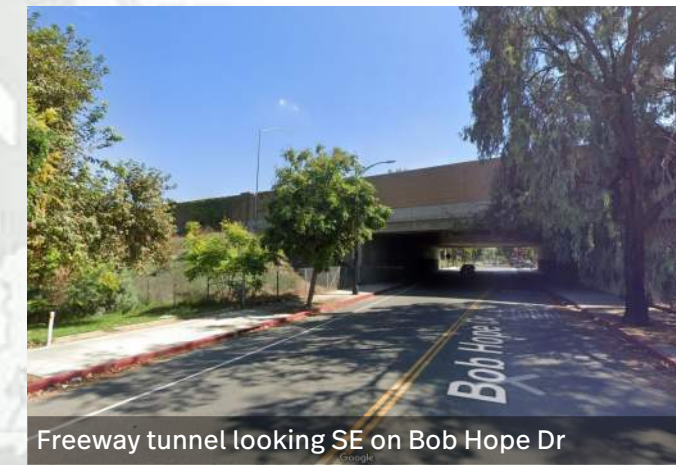
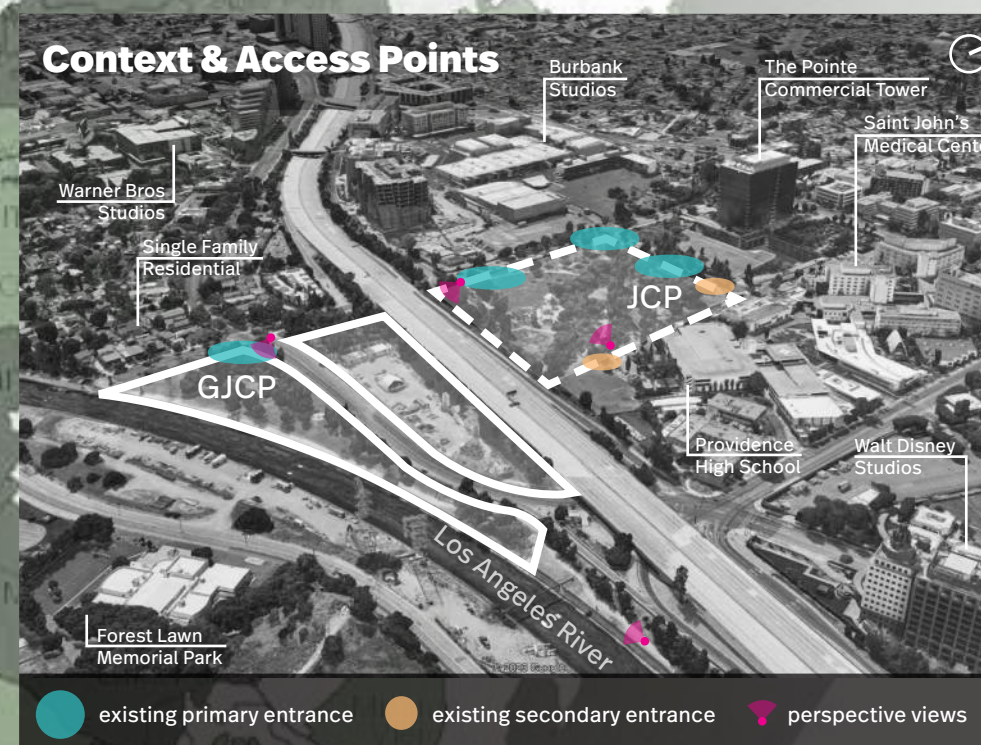
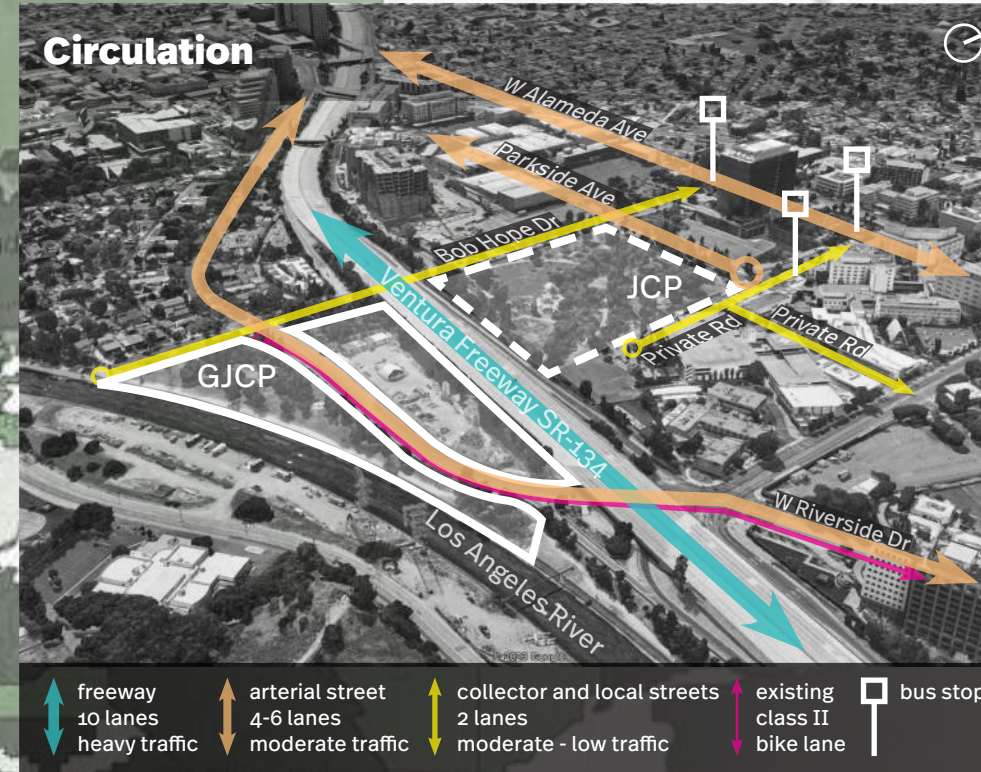
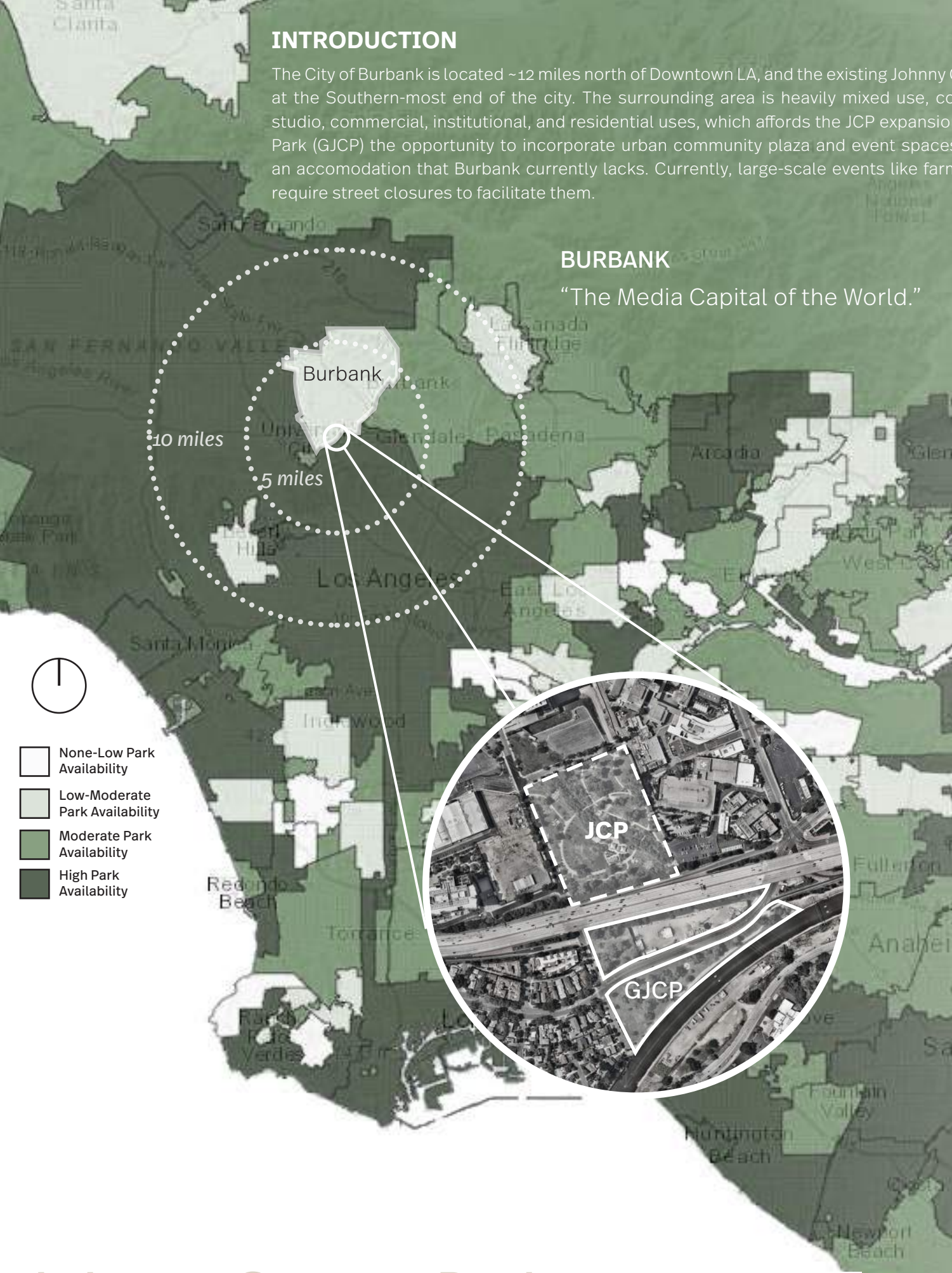
Conceptual Master Plan . . . . .	14
Illustrative Site Plan . . . . .	15
Burbank's Living Room . . . . .	16
Native Meadow . . . . .	20
River's Edge . . . . .	24
Team Terra Gaia . . . . .	28

# INTRODUCTION

The City of Burbank is located ~12 miles north of Downtown LA, and the existing Johnny Carson Park (JCP) is located at the Southern-most end of the city. The surrounding area is heavily mixed use, comprised of various media, studio, commercial, institutional, and residential uses, which affords the JCP expansion of Greater Johnny Carson Park (GJCP) the opportunity to incorporate urban community plaza and event spaces of varying scale, which is an accomodation that Burbank currently lacks. Currently, large-scale events like farmer's markets and festivals require street closures to facilitate them.

## BURBANK

"The Media Capital of the World."





After being granted to the Verdugo family by Spanish government in 1784, it was granted to Vicente do la Osa, Jose Castro, and Luis Arenas as Rancho La Providencia.



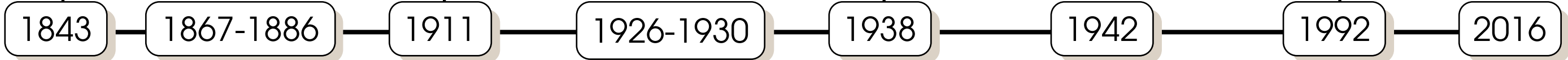
Burbank was incorporated. The city signed contracts to provide electricity, name streets, number homes and business, and created a post office.



Disney Productions purchased 51 acres to build a new studio in Burbank on Buena Vista Street



Buena Vista Park was renamed to Johnny Carson Park.

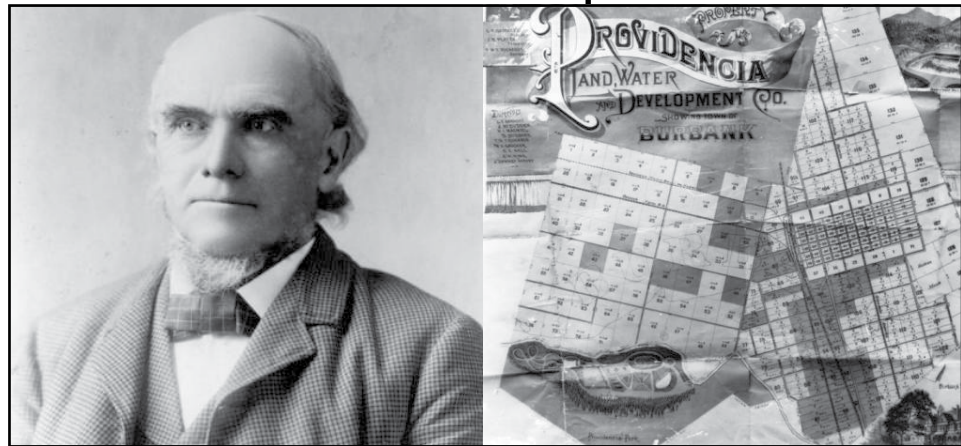


Dentist Dr. David Burbank purchased Rancho La Providencia (1867). He later sold his land in 1886 to the Providencia Land, Water and Development Company where he served as one of the directors.

78 acres on Olive Avenue was purchased by First National Pictures and was acquired by Warner Brothers months later in November 1926. In 1928 airplane manufacturer Lockheed moved from Hollywood to Burbank and the first airport opened in 1930 to provide an alternative airport to LA with less fog.

51 acres were purchased for a future park development in an effort to beautify the LA River; some portions were sold to St. Joseph Hospital and NBC. In June, 1943 the site was officially named Buena Vista Park.

Johnny Carson Park was reopened after redevelopment.



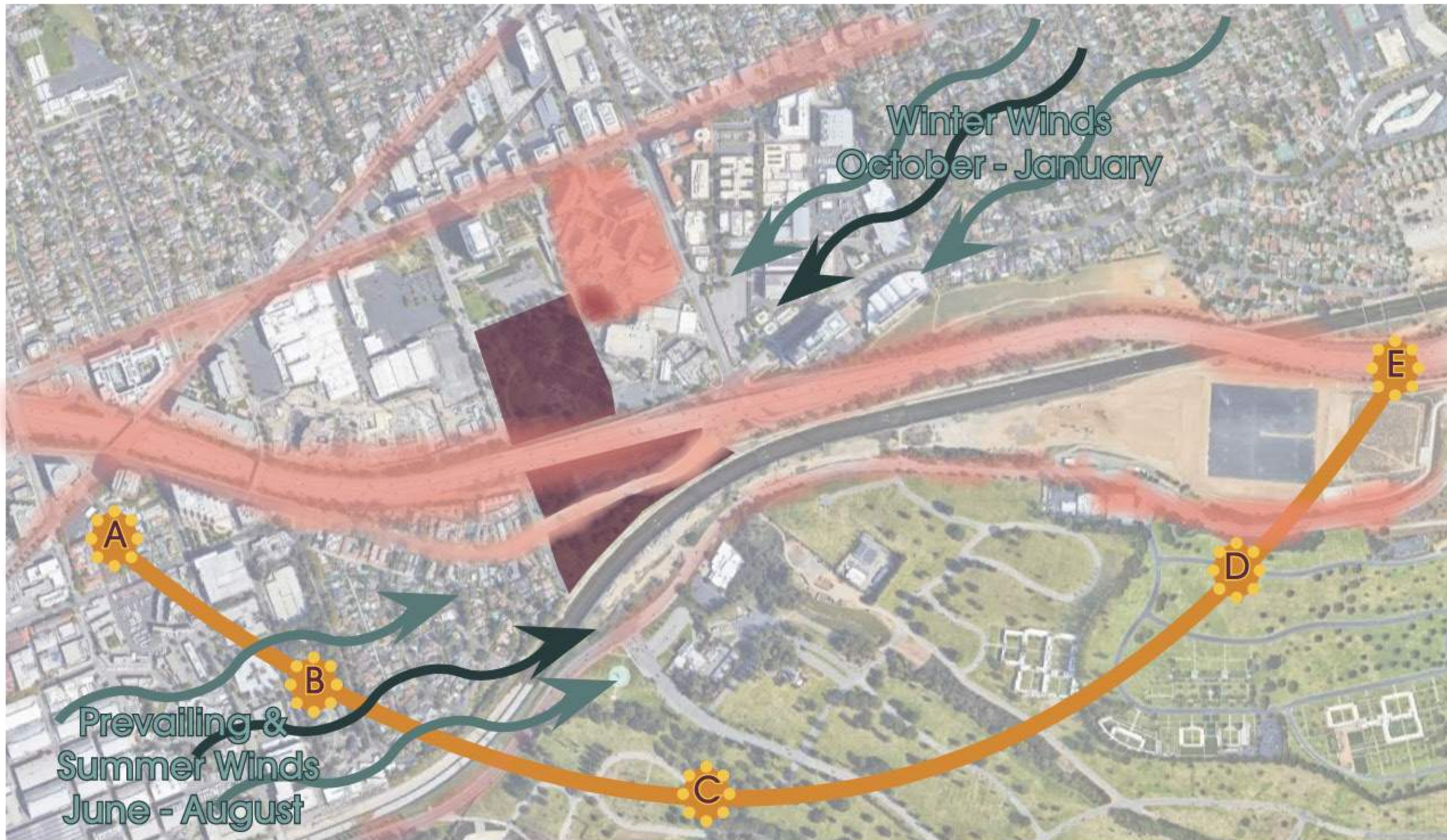


**LEGEND**

- A Griffith Park
- B LA Equestrian Center
- C Headworks Project
- D Forest Lawn Memorial Park
- E Pollywog Park Habitat Restoration
- F Disney Studios
- G Providence High School
- H St John's Medical Center
- I Proposed Sennett Creek Park
- J The Pointe Commercial Tower
- K Burbank Studios
- L Warner Brother Studios

- Site
- Parkland
- Private Open Space
- Media
- Residential
- Municipal
- Medical
- Commercial

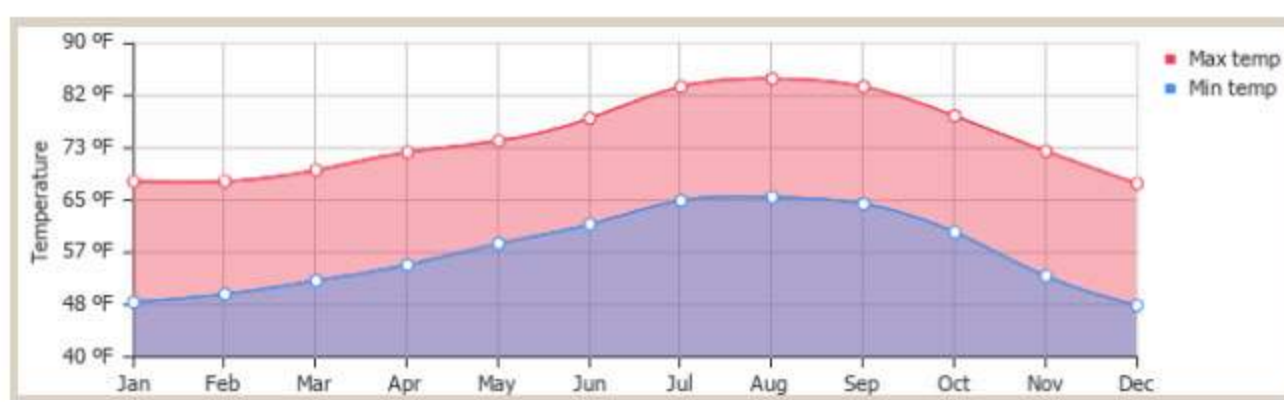
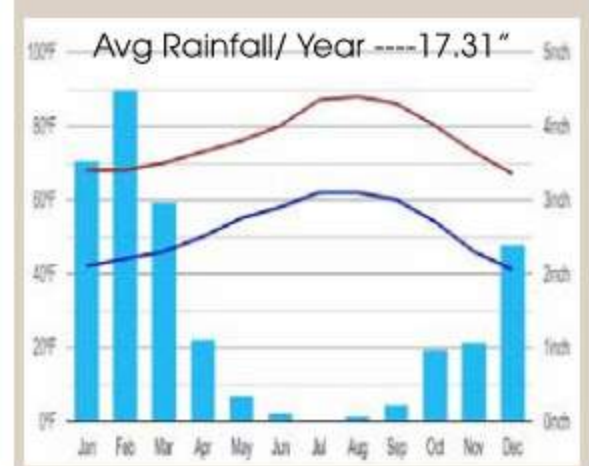




Site:  
Johnny Carson Park

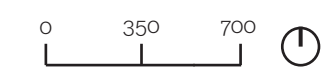


Traffic Noise and Sounds



**Mediterranean Climate**  
 The Johnny Carson site located in Burbank California is considered a "Mediterranean Climate"; a climate distinguished by warm, wet winters under prevailing westerly winds and calm, hot, dry summers, as is characteristic of the Mediterranean region.

**City Scope Sounds**  
 In addition to its specific climate, being nestled within the bounds of a bustling city and neighboring a large hospital, constant sound is present and sometimes rises in surprising outburst.



# Site: Johnny Carson Park

## Active Habitat Density

The Areas within and surrounding Griffith park are home to hundreds of species of animals. Land animals hunt and thrive in more protected areas, as well as native birds and aquatic life. Suburbs are fairly unprotected, thusly less populated.

## Avian Migration Pattern



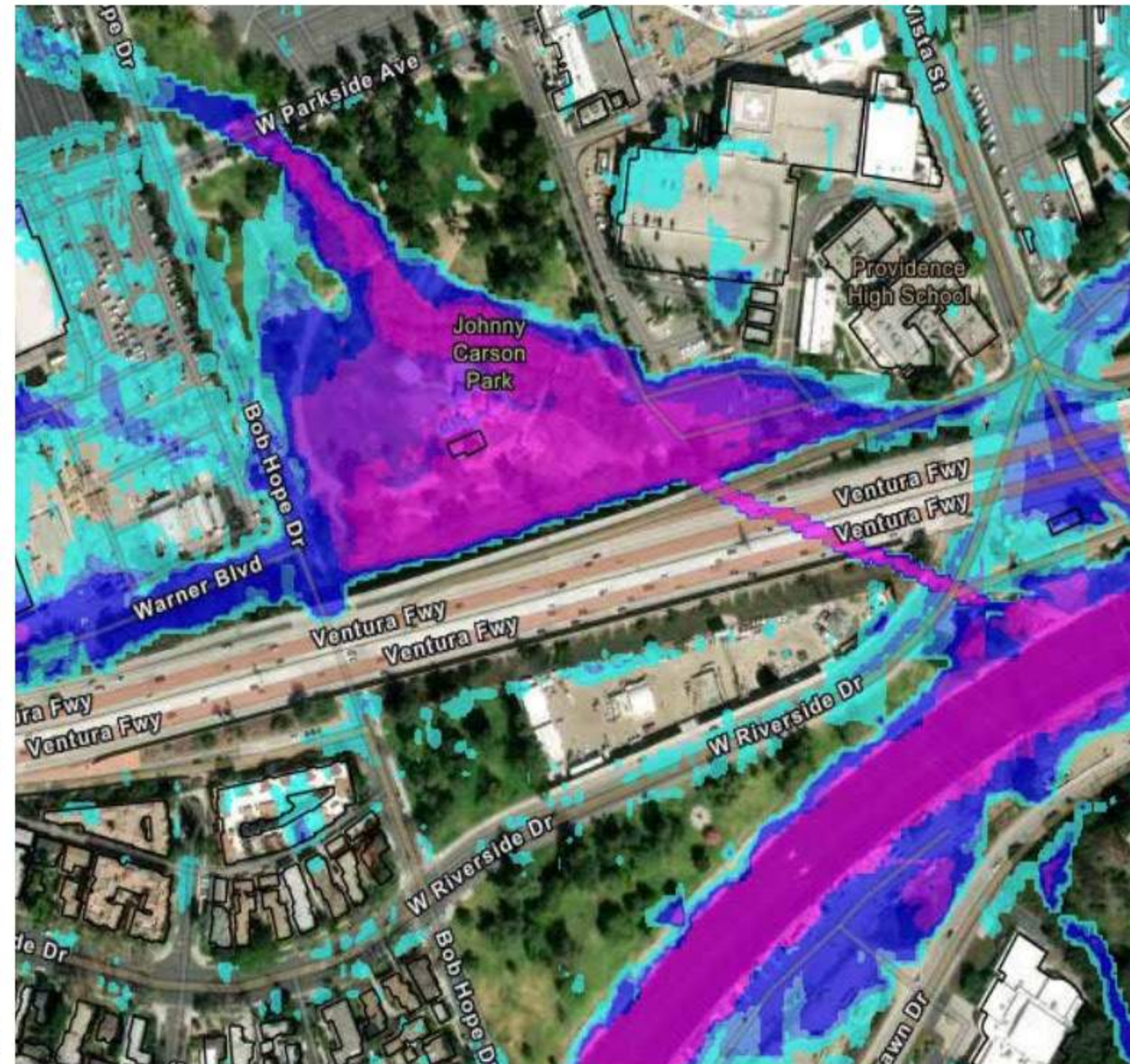
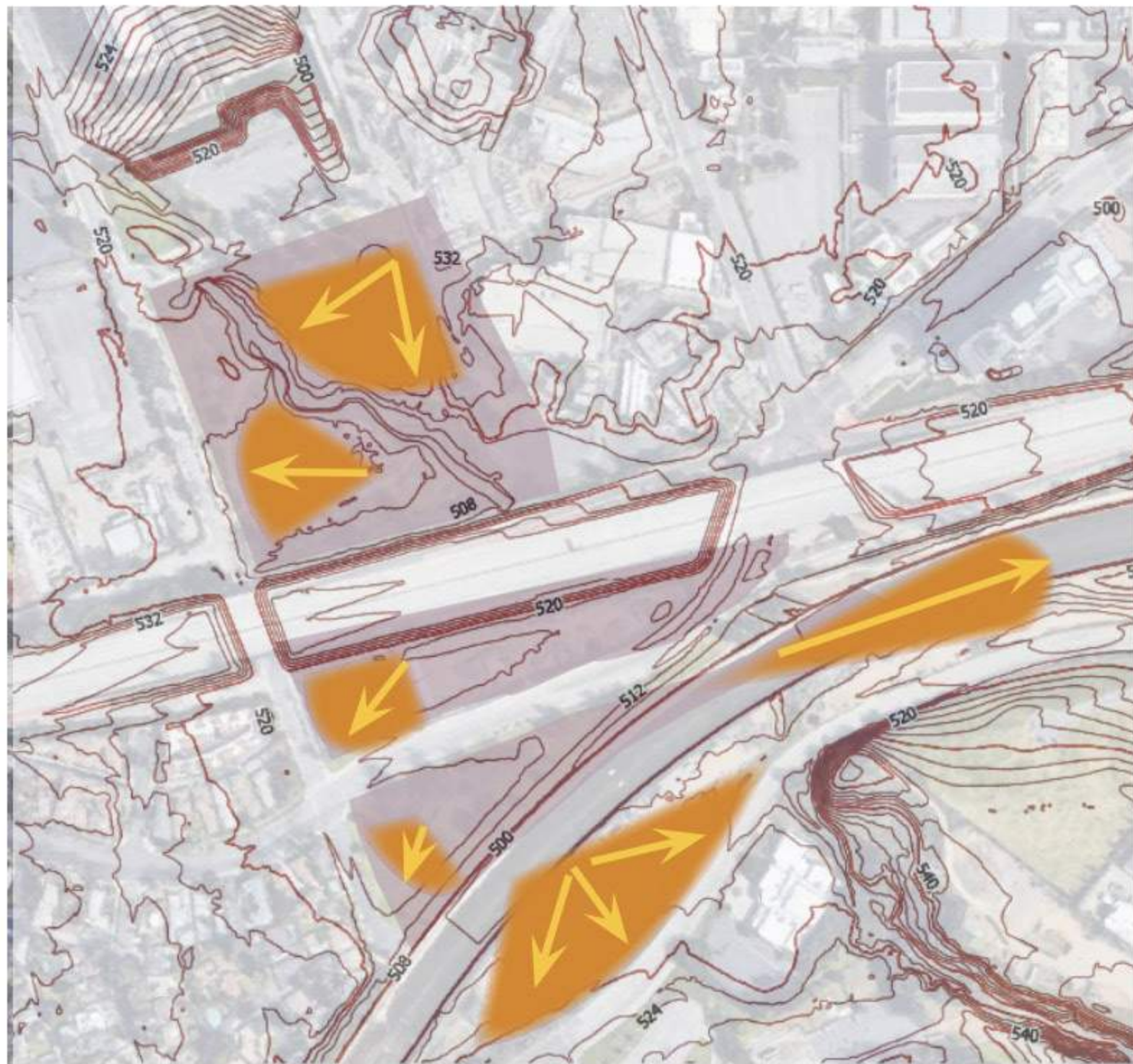
Migrating birds are often seen near the LA River and in areas of forestation. As they Journey south, they rest and feed on protein rich insects that thrive in undisturbed areas and near viable water sources. Some stay and become permanent residences.

## Migratory Butterflies



The Monarch Butterfly migrates thousands of miles annually but primarily keep to the cooler predictable air currants of the coast. However small numbers do come inland to feed and rest. Local pollinators make a permanent residence of the sparse native habitat existing here





**Slope and Flood Risk Analysis**  
 Presently the land which the Johnny Carson Park is located is on a generally south leading slope with rain water draining to the Los Angeles River. There are high points North of the site where commercial buildings are constructed as well as the 135 Freeway which is raised some 40' above grade. Opposite the park, across the river a gradual yet steady slope gains momentum to reach the tall peaks of the Santa Monica Mountains in Griffith Park.

**View Analysis**  
 With the presence of various vistas and a small amount open space, attractive views exist within the park. Some perimeter views have potential to be quite nice. Being in an urban setting with a concrete lined river, being surrounded with tall buildings, and looming high tension power-lines, much natural beauty has been lost. However, opportunity awaits to accentuate and honor the surrounding native California landscape.







## LEGEND

- Tree Canopy
- Building Envelope

This analysis map is a graphic representation of the vertical plane, showcasing the trees and buildings that create a spacial envelope and provide a sense of place.

Johnny Carson Park is located in the middle of an urban context -- a breath of fresh air that separates commercial and residential zones. That pocket of nature extends past the river, where it opens up into the cemetery, Griffith Park, and beyond.

Tree canopy density drastically increases in the park as opposed to the surrounding commercial and school zones. The residential zone also well-forested, which is vital for summer comfort and quality of life.

A prominent treeline runs along the creek in Johnny Carson Park and into Senett Creek, which is directly across the LA River. Many of these trees are riparian species, which include Sycamore, White Alder, and other riparian species.

## Opportunities

**A** - Easy access/connection to urban areas, neighborhoods, and Griffith Park provide opportunity to improve pedestrian circulation around park, connecting to surrounding urban context.

- Expanding sidewalk, adding parkway, creating a more inviting experience.

- Promotes greener modes of transport, e.g. electric scooter, e-bikes, normal bikes and horses.

**B** - Proximity to river/potential views.

**C** - Abandoned freeway provides opportunity to connect Johnny Carson Park to river and Griffith Park proper.

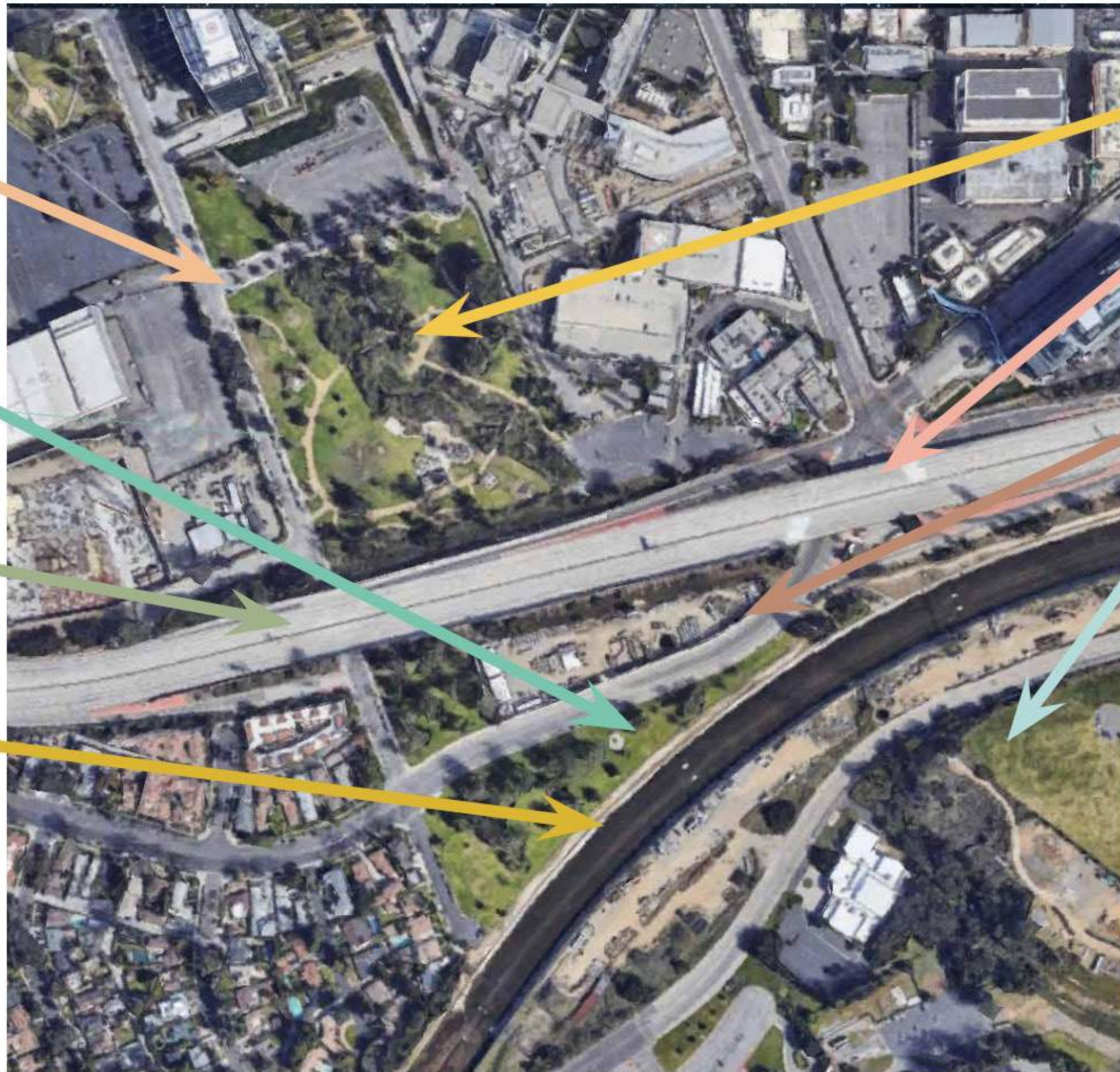
- Connecting two halves of park by bisecting freeway and connecting the two with lighter infrastructure, like a wooden bridge?

**D** - Large variety of native and migratory animals make this area a great location for study, research and further conservation education.

**E** - Climate allows outdoor activities for most of the year.

- River: potential active recreation (swimming, boating, kayaking, paddling)

**F** - Close proximity to habitat friendly waterways encourage re-wilding of urban riparian environment.



## Constraints

**A** - Power Lines - must be accessible and have restrictions on how close program implements may be installed.

**C** - The Giant Freeway creates massive physical barrier while obstructing views and access to neighboring mountains.

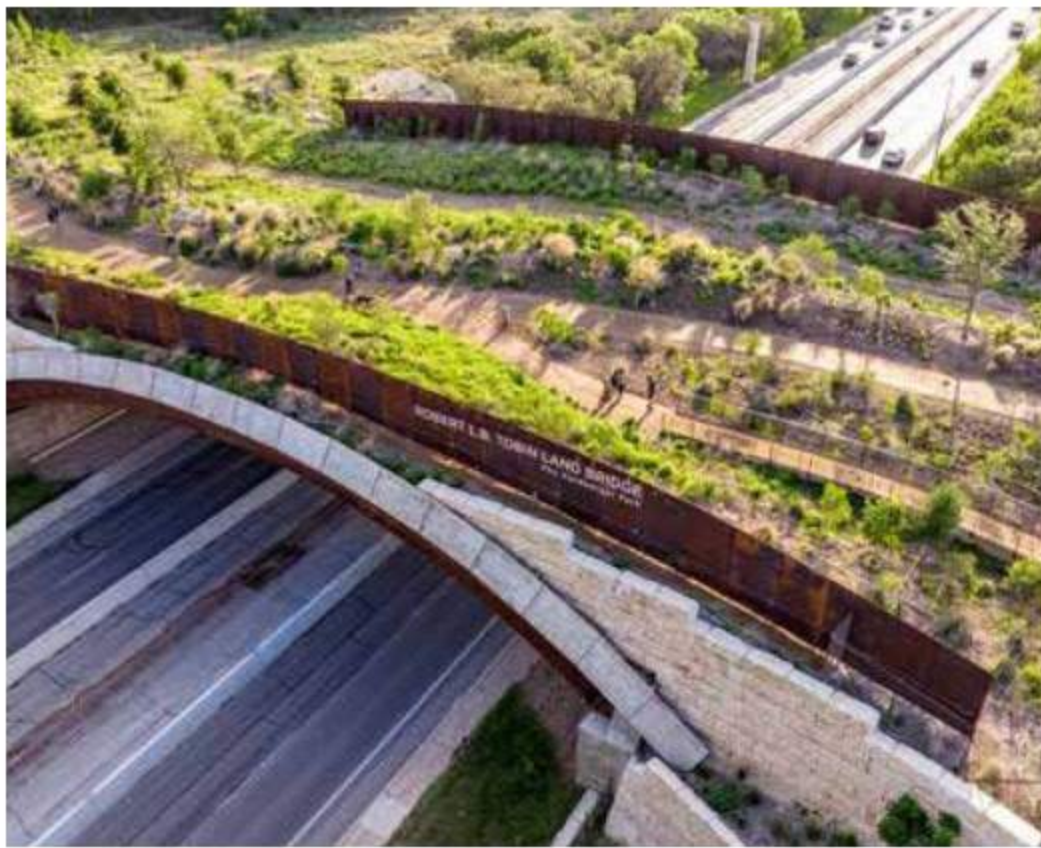
**D** - Riverside Drive intersects southern half of site and further disrupts safe habitat and pedestrian movement.

**B** - Large turf field from cemetery negatively affects native habitants with pesticides and fertilizers.

**E** - Plant choices restricted to use of climate adaptive/native plant material as opposed to exotic and unusual varieties.

**F** - Due to drought conditions in Southern California... "70% run off requirement:" (thanks, Emily!)

- Require use of permeable materials and routing and retaining of storm-water.



HARDBERGER PARK, SAN ANTONIO TX



PACIFIC PLAZA, DALLAS TX



ACKERSON MEADOW, YOSEMITE NP



LAWN AT HUNTERS POINT SOUTH PARK, NYC NY



ARROYO SECO RIVER



ARROYO SECO RIVER



SR-134  
Decommissioned

Los Angeles River  
bottom re-naturalized

70% of all stormwater  
must be captured on-site

**TIMELINE: YEAR 2040**



## **WEAVE:**

together the urban fabric



## **REVITALIZE:**

the urban landscape



## **CONNECT:**

with neighbors and nature



## **RESTORE:**

native habitats & ecology



# LEGEND

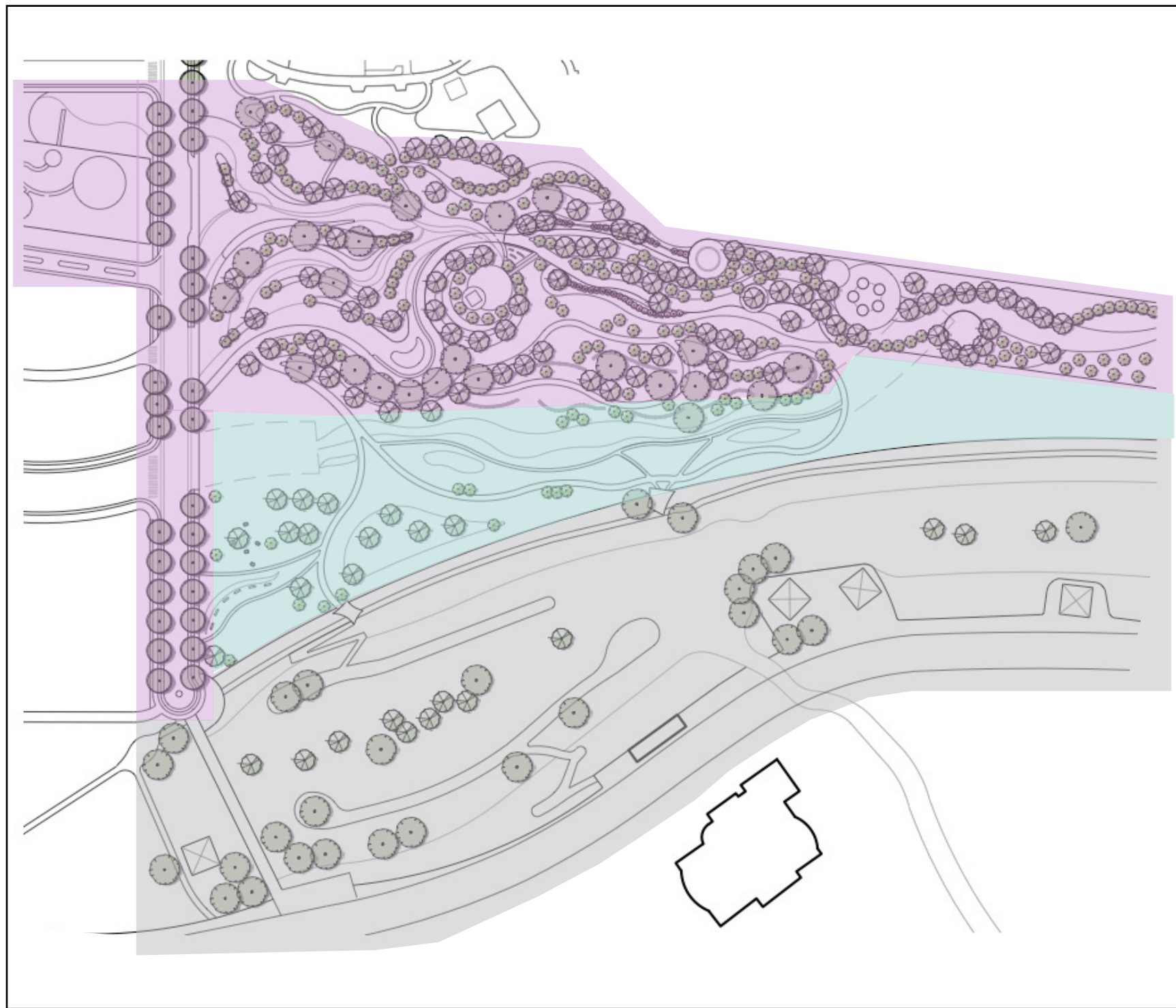
## Scope of Work:

- A Burbank's Balcony & Living Room
- B The Native Meadow
- C River's Edge
- D Bob Hope Paseo

## Future Phases:

- 1 Future Ventura Freeway Greenbelt Expansion
- 2 Greenbelt Balcony Connections to Existing Buildings
- 3 Greenbelt Connection to Polywog
- 4 Greenbelt Connection to Headworks
- 5 Greenbelt Connection to Cemetary and Griffith Park
- 6 River Restoration Expansion

ps



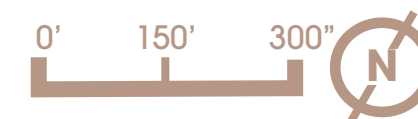
BEFORE PHOTOS OF PROJECT ZONES

**LEGEND**

-  Burbank's Living Room
-  Native Meadow
-  River's Edge

**PROJECT ZONES**

The project design consists of three zones: Burbank's Living Room, the Native Meadow, and the River. Each of these zones will be detailed in the following pages.





W Riverside Drive

### A River Tributary

The LA river was originally an alluvial river that ran freely across a flood plain that is now occupied by Los Angeles, Long Beach, and other townships in Southern California. The form of this design is inspired by what the river once was – wild, rhythmic, and untamed. The rigid, linear freeway is reminiscent of the state of the river today, so the break in from from linear to meandering is a metaphor that illustrates the restoration of the river. It is an artistic and heart-felt expression of the river’s past, present, and future. The LA River was channelized in 1938, is partially freed over a century later in 2040, but requires continual restoration efforts for years to come.



## LEGEND

- A Burbank’s Balcony
- B Bob Hope Promenade
- C Entrance & Dropoff
- D Dog Park
- E Outdoor Classroom
- F Reflecting Pool
- G Splash Pad
- H Existing Monument
- I Sculpture Garden
- J Wood Bridge
- K Water Wall
- L Bike-friendly Escalator
- M Wood Overlook
- N Drought-tolerant slope planting
- O Disc Golf
- P Food Kiosk/Plaza
- Q Burbank’s Living Room
- R Streetscene Update
- S Rammed Earth Wall with Historical Inscriptions







W Riverside Drive

Burbank's Balcony

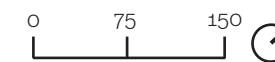
Burbank's Living Room

# LEGEND

- A Burbank's Balcony
- B Bob Hope Promenade
- C Entrance & Dropoff
- D Dog Park
- E Outdoor Classroom
- F Reflecting Pool
- G Splash Pad
- H Existing Monument
- I Sculpture Garden
- J Wood Bridge
- K Water Wall
- L Bike-friendly Escalator
- M Wood Overlook
- N Drought-tolerant slope planting
- O Disc Golf
- P Food Kiosk/Plaza
- Q Burbank's Living Room
- R Streetscene Update
- S Rammed Earth Wall with Historical Inscriptions



Johnny Carson Park - Burbank's Balcony Illustrative





## LEGEND

A	Flexible Use Plaza	E	Turf Berm	Escalator	
B	Wood Bridge	F	Existing Monument	I	Water Wall
C	Grasscrete	G	Sculpture Garden	J	Native Planting
D	Splash Pad	H	Bike-Friendly	K	Wood Overlook





## Sculpture Garden

### Requiem

*noun* ['rekwēem]

An act or token of remembrance

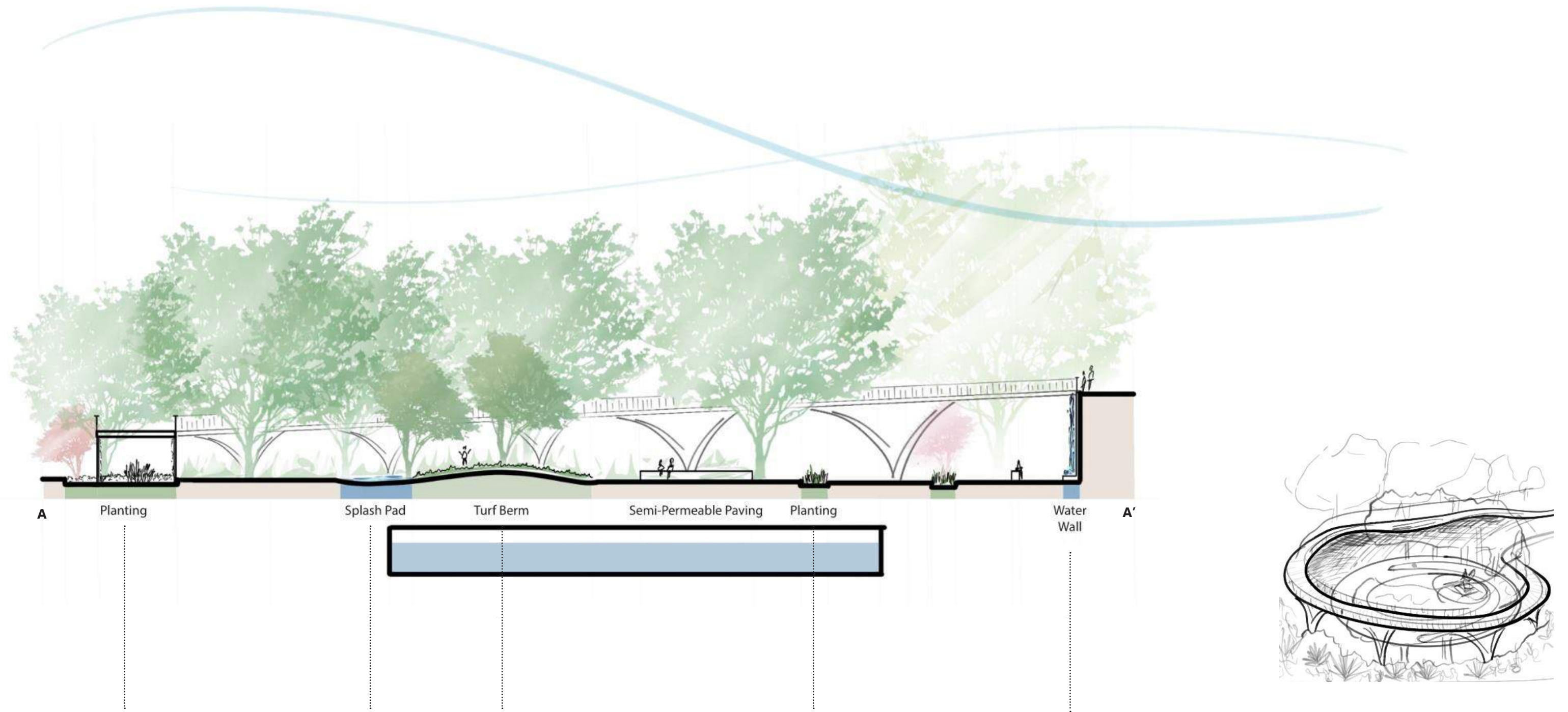
*"Burbank's Tribute to Great Americans, Defenders of the Constitution, Yesterday, Today, and Tomorrow"*

Sculpture name: Requiem

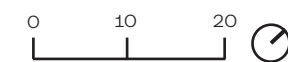
Sculptor: Erwin Binder

Assembled by Mr. Bob Hope and Mayor Michael R. Hastings on May 27, 1988





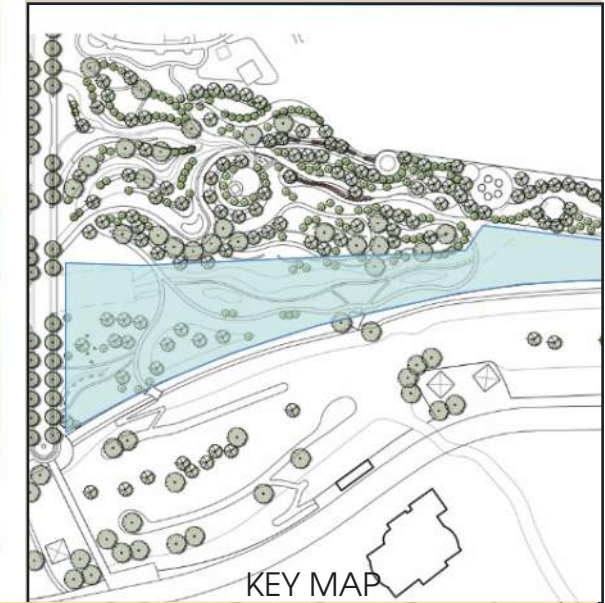
Johnny Carson Park - Burbank's Balcony Section Elevation





**LEGEND**

- A Large lawn with benches
- B Riverside Drive tunnel
- C Drop-off area, bike and scooter parking
- D Small overlook
- E California native meadow
- F Large overlook
- G Healing garden

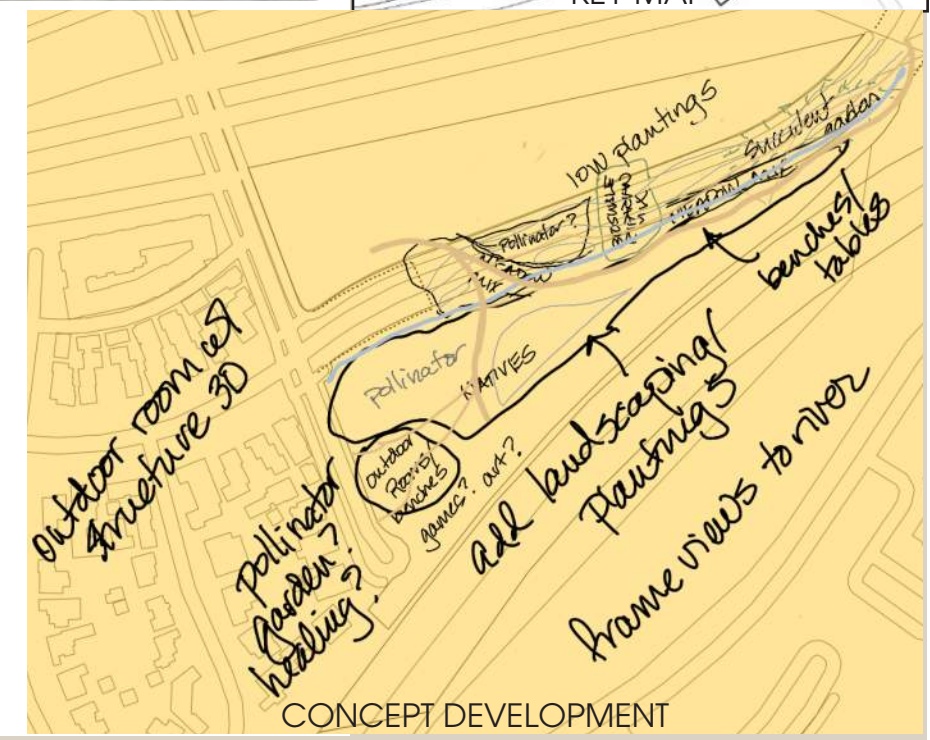


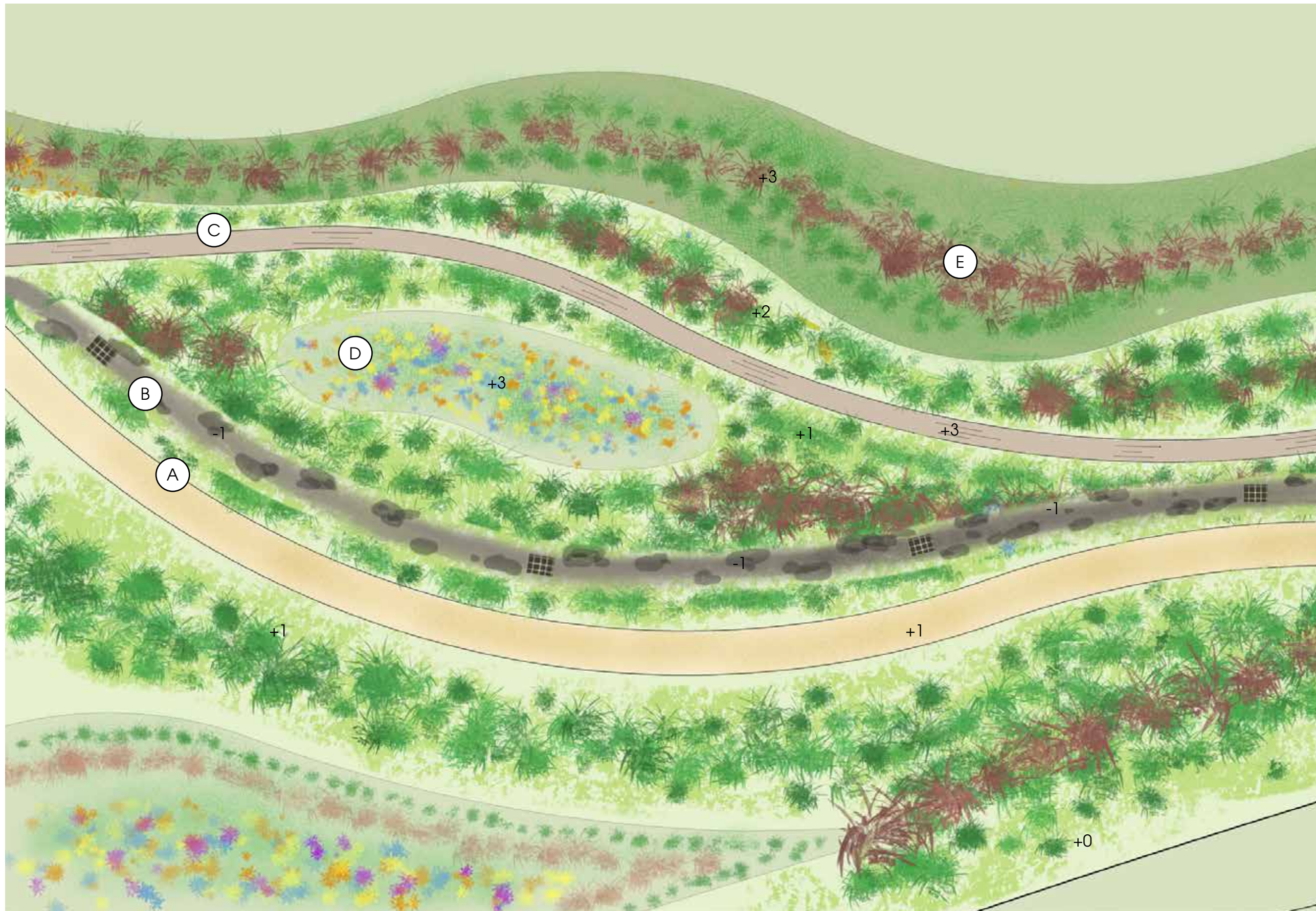
**The Native Meadow**

The Native Meadow design redevelops the area over Riverside Drive, which has been routed through a tunnel underneath the park, into a **native California meadow** with a raised boardwalk path for meandering through the space. The pathways and landscape lines used are in imitation of the flowing river and draw a connection to the river all throughout the park. The meadow is planted with California natives to provide habitat to small animals, birds, and other pollinators.

On the west side of the Native Meadow that is directly across from the residential neighborhood, the space has been subdivided designed to provide both **intimate outdoor rooms** underneath the sycamore trees for gathering in small groups or individually. There is also a small shade structure for small gatherings. At the river's edge is a **spacious lawn** with benches and a framed view facing the river and the mountains beyond where creatives may find solitude or neighbors may relax. This space may also be used for larger events as it is easily accessible from the street. Two **overlooks** are placed also providing a view towards the mountains for those walking the path. Additionally there is a **drop off area** and **bicycle and scooter parking** available near Bob Hope Dr.

On the east side of the Native Meadow, the path leads to a **healing garden** for hospital visitors or residents to meander and meditate.

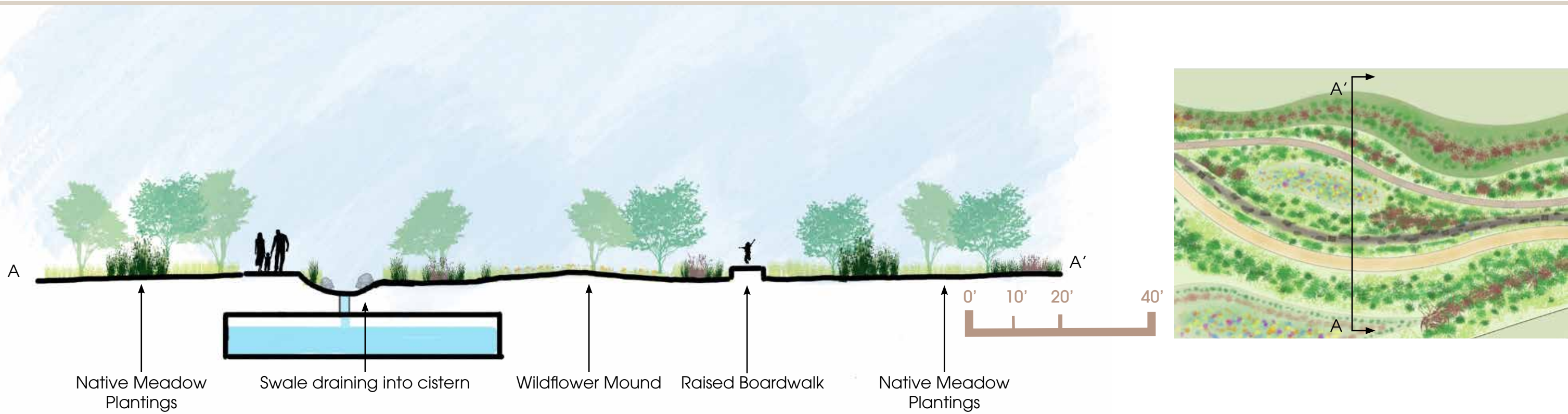




### LEGEND

- A River's Edge Path
- B Swale draining to cistern
- C Raised boardwalk path
- D Wildflowers
- E California native meadow plantings





### NATIVE MEADOW SECTION/ELEVATION



DECOMPOSED GRANITE PERMEABLE PATHWAY MATERIAL



RECYCLED PLASTIC COMPOSITE BOARDWALK MATERIAL



BICYCLE PARKING



SCOOTER PARKING RACKS



RECYCLED PLASTIC COMPOSITE WOOD BENCHES



CURVED SHADE STRUCTURE

### MATERIAL CHOICES FOR NATIVE MEADOW AND HEALING GARDEN



CALIFORNIA WILDFLOWERS



CALIFORNIA NATIVE GRASSES



LAVENDER



FOXTAIL AGAVE





## River Features:

Referring to the original intention of Johnny Carson Park and responding to the communities needs and those of today, this segment of The Los Angeles River has particular pertinent features.

- A Greater connectivity utilizing new trail as well as separate equestrian and pedestrian/ bicycle bridges
- B Seasonal estuaries for nesting birds of both local and migratory species
- C Chaparral and Riparian planting for food sources and shelter for local animals
- D A new nature center and observation boardwalks to help people connect with the native inhabitants in their environment without disturbing sensitive areas
- E Integration of Senate Creek and Tujunga Wash into the greater river habitat

### Re-wilding

The bottom of the LA river in this portion has been removed as well as most concrete siding. Natural slopes are planted with Chaparral plants and provide habitat for local birds and animals.



### Habitat for Migrant Birds

The widening of the river and creation of seasonal estuaries in semi protected "slow zones" helps create an ideal place for bird nesting for locals and migrant species



### Watershed

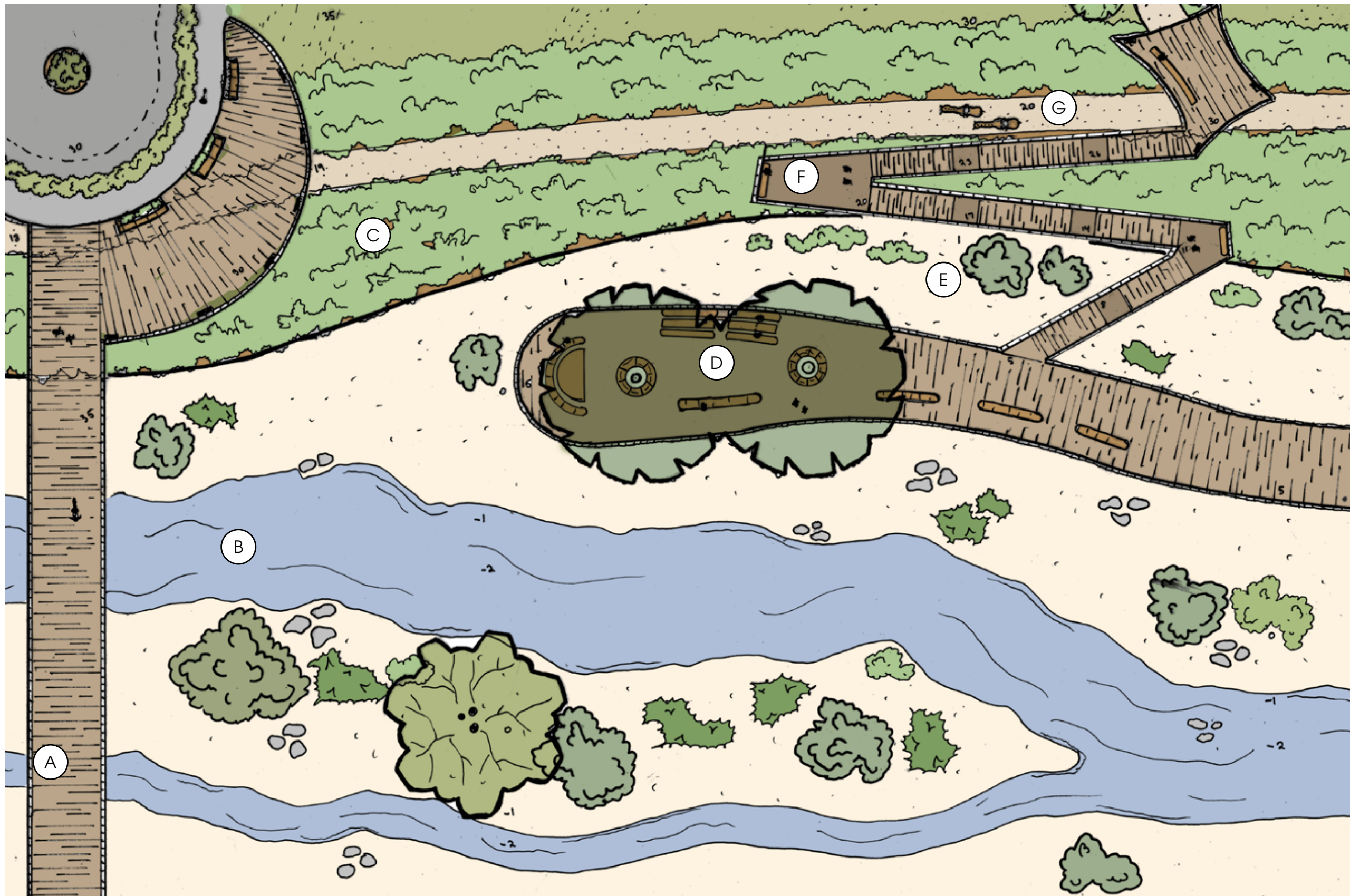
Water is allowed to filter to and recharge the surrounding watershed. Native planting of riparian nature and ensures removal of contaminants and improves Water quality.



## A Closer Look:

A good example of programming along with public and native wildlife accommodation can be experienced greatly in this particular area~

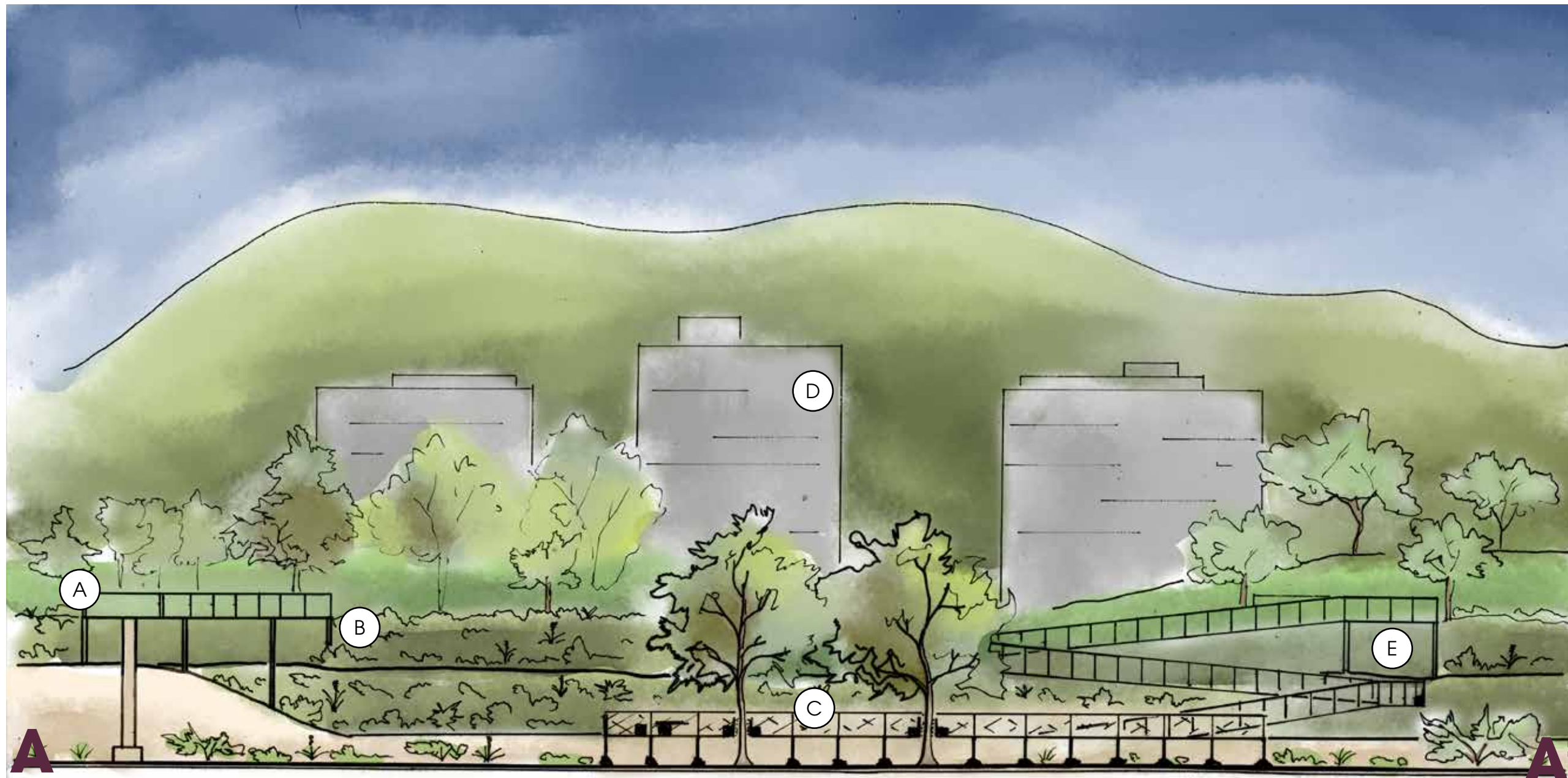
- A Bicycle/pedestrian bridge connects to opposite river bank
- B Direct river access open seasonally for recreation
- C Native chaparral maintains habitat and slopes
- D Picnic benches and casual seating for outings
- E Incorporated seasonal marshes and riparian habitat for nesting aquatic birds and wildlife uses
- F ADA accessible considerations for all inclusive program use
- G Enhanced separate equestrian trail with shaded resting stops and a near by horse crossing bridge



## A Cut View:

Taking a slice through the project help see what accommodations are made to the 30' journey down into the riverbed.

- A Bicycle/pedestrian bridge
- B Horse trail leads under pedestrian walkways and a safe distance from busy public. An equestrian bridge runs parallel to this ped/ bicycle bridge to connect to other horse trails
- C Picnic areas and benches under this sycamore tree provide relaxing place to enjoy river life
- D Cityscape and local mountains backdrop this serene refuge
- E This ADA accessible ramp provides easy access to the river below and is made from the same recycled composite material that the rest of the boardwalk is made from



## Building Material Sample:

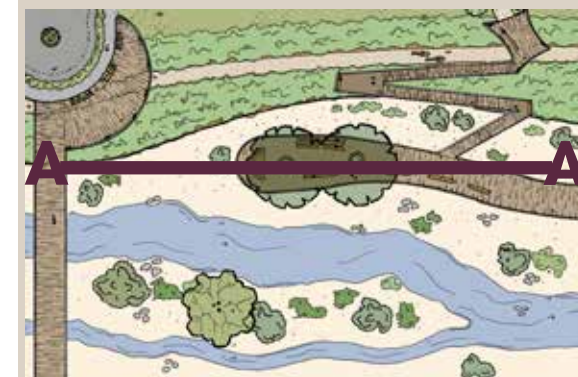
Stone from removed freeway for planters



Gabion for retaining walls along river edge



Recycled plastic composite for boardwalks





## A note on Native Chaparral & Riparian Planting:

Hillside stabilization as well as effective habitat for biodiversity helps begin the re-wilding of our urban areas

Toyon



Sagebrush



Cottonwood



Buckwheat

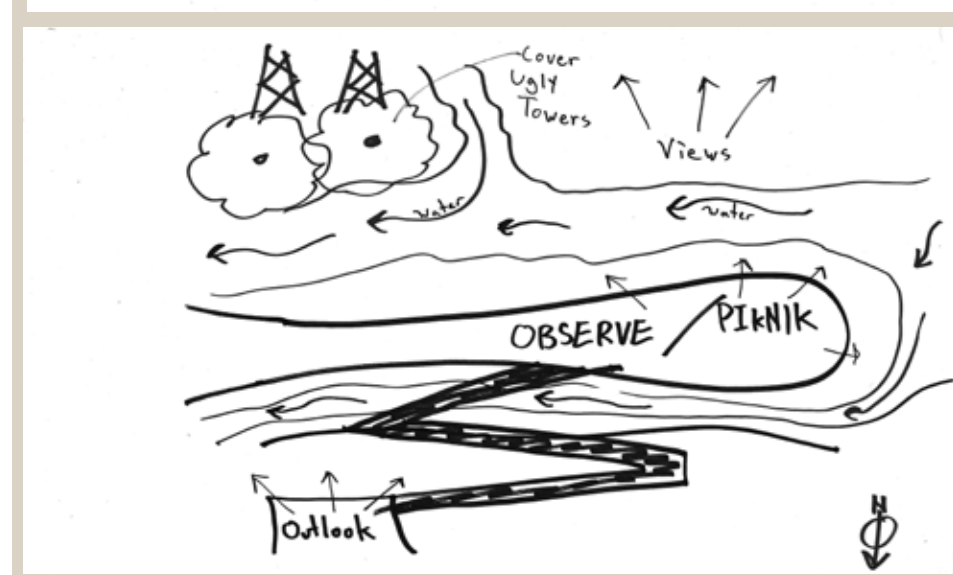
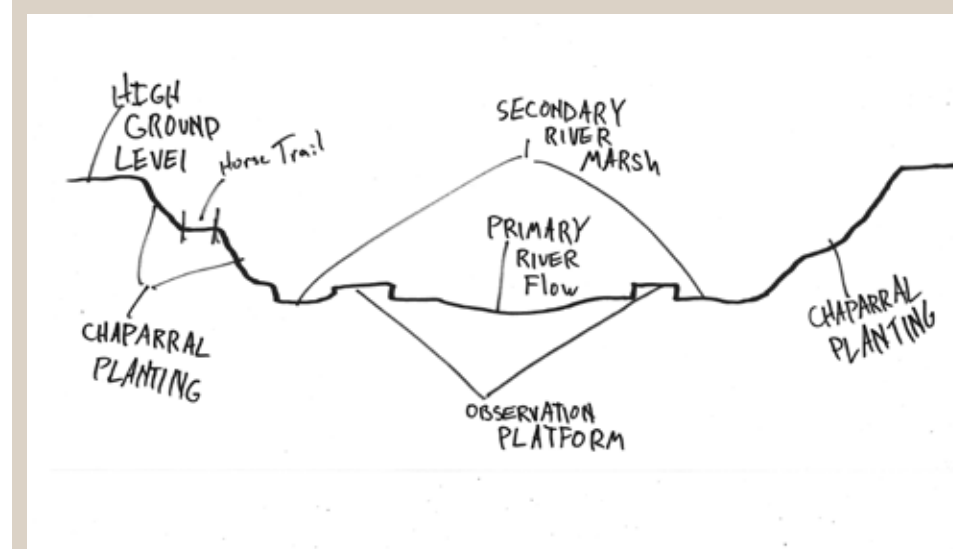
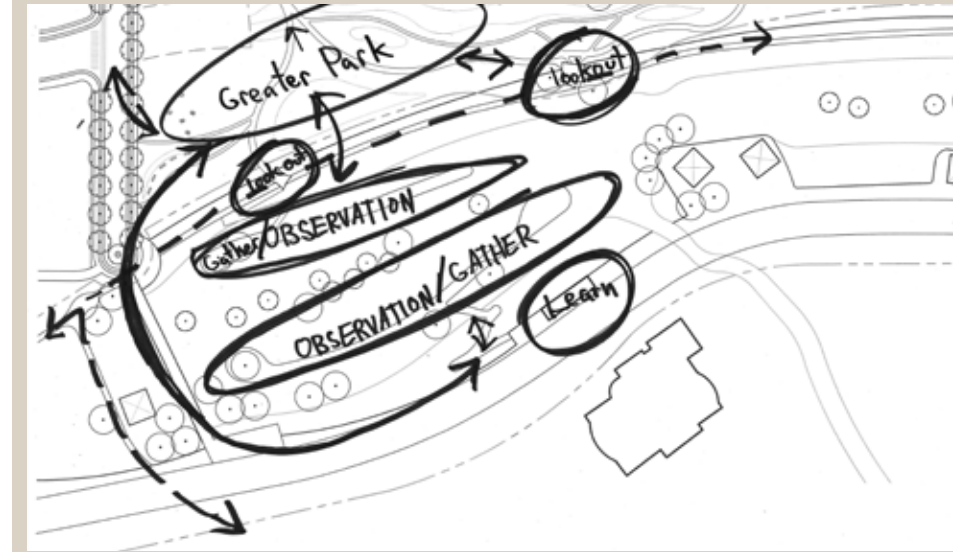


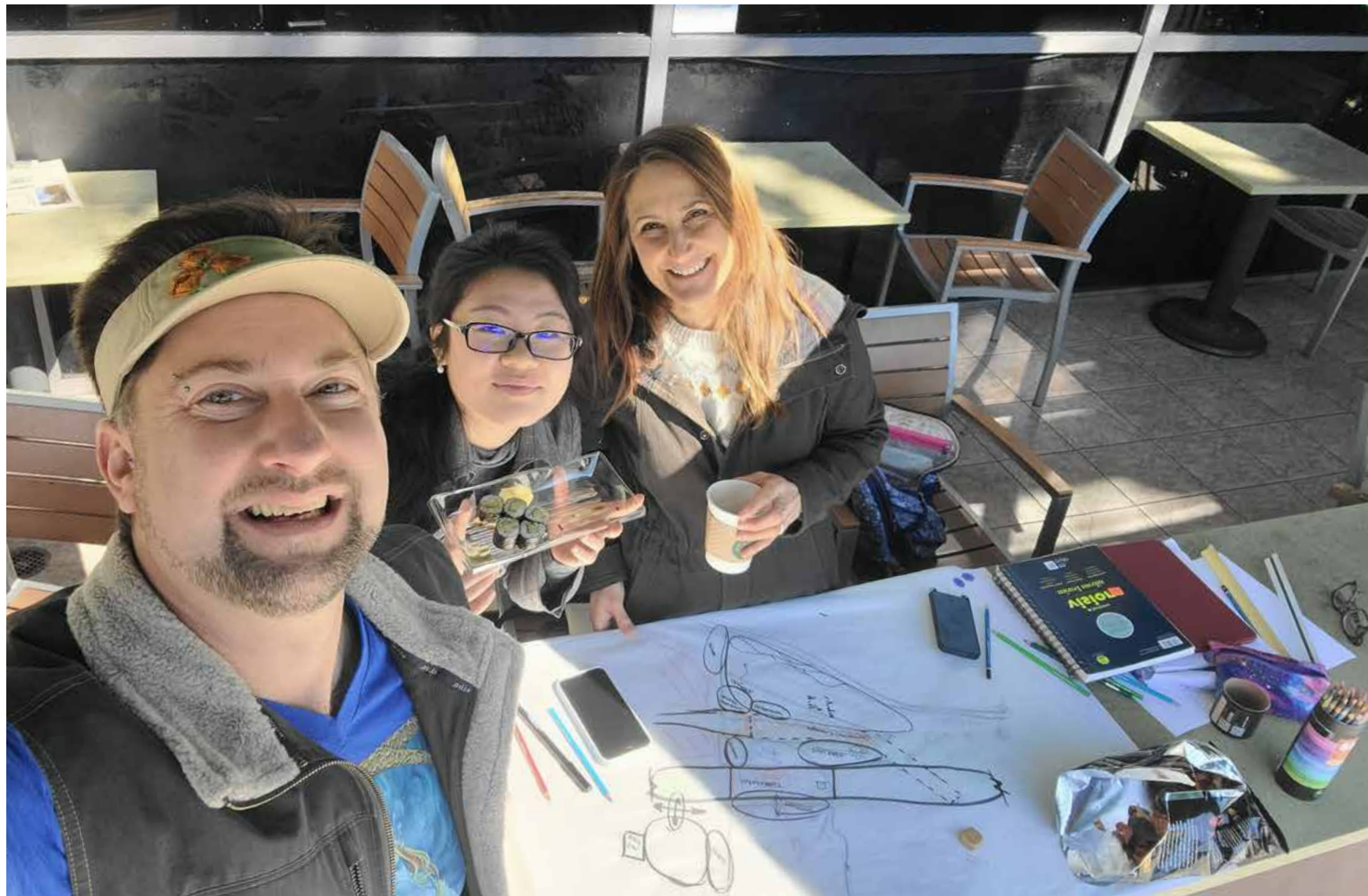
Tree Poppy



## A Brief look at the Process:

Re-imagining a home for wildlife as well as fulfillment for us takes time and process. From conceptual diagrams to environmental considerations, imagination comes to life.





Our wonderful team meeting at the Whole Foods for the first time and create our bubble-diagram~



## A special Thanks from us all...

Though this has been a challenging class with mind bending concepts while pleasantly grinding hours of work, i am so please and feel blessed to have partaken in this portion of my journey. Thank you so much Emily for sharing for you insight, expertise and experience. Thank you also to my cohort, my understanding family and the staff of UCLA extension. I feel charged and inspired and ready to charge on!

*Eric de la Hoya~*

Learning about so many ways to analyze a site, and then bringing the analysis into the creation of a design has been very enlightening. Thanks to Emily for your instruction and bringing all the real life examples of analysis, Burbank, and JC Park into the class. I'll never know how the stars aligned so perfectly to put the three of us together on this team (or how Emily just knew?!), but these two have been amazing to work with, thank you Eric and Grace. And thanks to our Tongva-nana cohort for chiming in with humor, advice, sharing information, and being the best support group ever! Y'all, we're halfway through!

*Callie Kourtis~*

Thank you to team TerraGaia, extended team (Tongvanana cohort!), and Emily for making this a challenging and inspiring quarter. Not only did I gain insight into environmental analysis, but I also reaped the benefits of working with a LA team virtually. For me, our team dynamics, communication, and collaboration were the learning highlights of this quarter. Thank you, Emily, for bringing us together!

*Grace Pan~*

**THANK YOU!**

