

TEAM BLUE HERON

LANDSCAPE DESIGN 4 - EMILY GABEL-LUDDY

MICHAEL BIRCUMSHAW, AIMEE KIRBY, ANDREW STEIGER

REDEVELOPMENT

JOHNNY CARSON PARK



TABLE OF CONTENTS

INTRO : 1 - 3

SITE HISTORY AND CONTEXT: 5 - 7

SITE ANALYSIS: 8 - 15

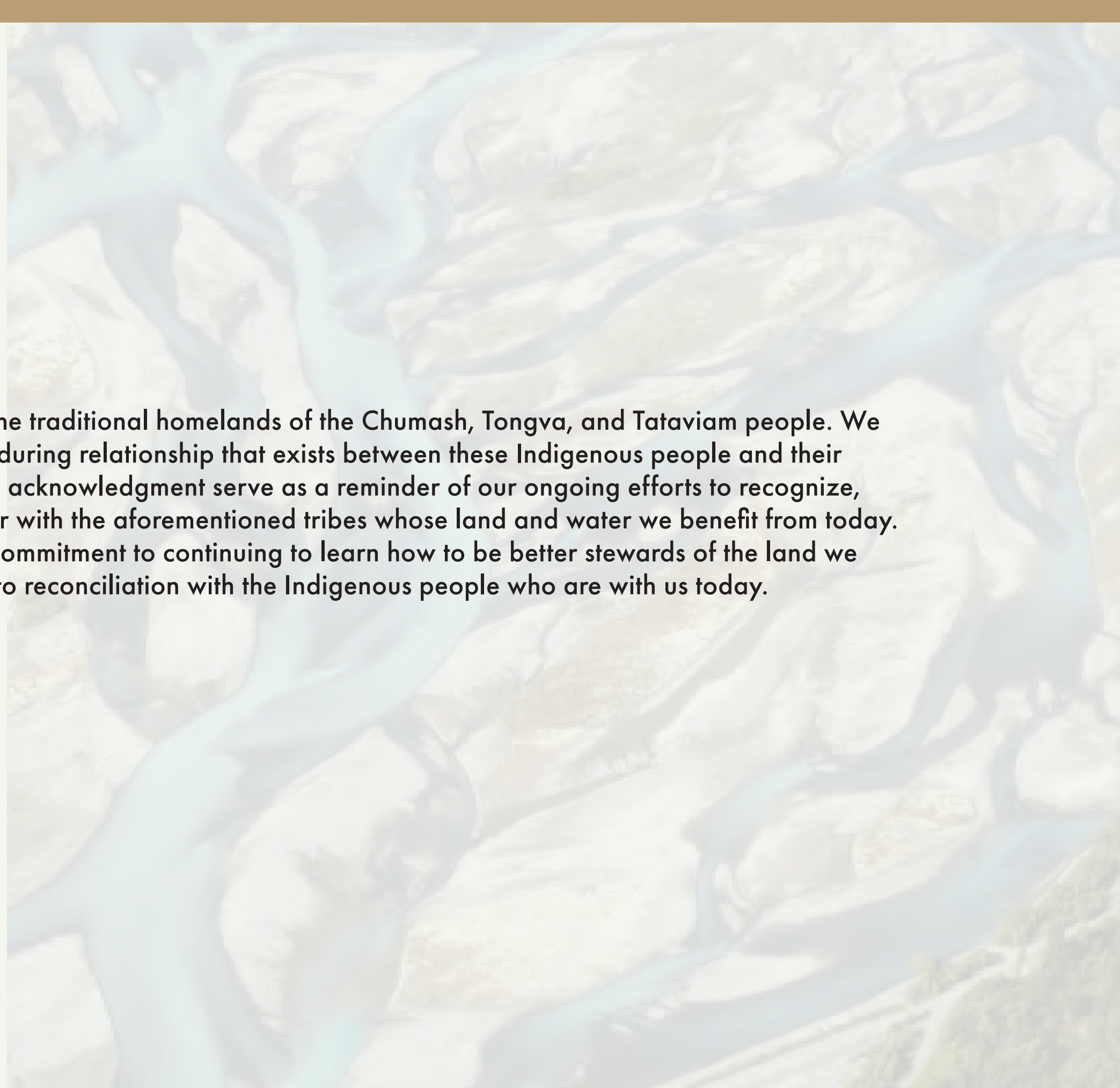
OPPORTUNITIES AND CONSTRAINTS: 16 - 17

CONCEPT DESIGN: 18 - 26

LAND ACKNOWLEDGEMENT



Johnny Carson Park sits on the traditional homelands of the Chumash, Tongva, and Tataviam people. We want to acknowledge the enduring relationship that exists between these Indigenous people and their traditional territories. Let this acknowledgment serve as a reminder of our ongoing efforts to recognize, honor, reconcile, and partner with the aforementioned tribes whose land and water we benefit from today. May this serve as a written commitment to continuing to learn how to be better stewards of the land we inhabit and as a dedication to reconciliation with the Indigenous people who are with us today.



THE BIG IDEA

Blue Heron's design solution examines Johnny Carson park through a myriad of principal lenses; history and transportation, site context, urban fabric and community, as well as land and water use in context with the ecological restoration of the flood plain and re-wilding the LA River. Altogether, creating deep connections and equitable urban land use for people, plants and animals. We believe that memory is embedded into the land so we look toward the past to sculpt for the future.

With the reimagined 134 Freeway, we envision unique and sustainable solutions to its prior footprint; such as alternative transportation, creation of green spaces and riparian zones, as well as community gathering areas and environmental education. In tandem, we solve for equitable and agile solutions to reclaim water back to our site while dechannelizing and restoring the LA river way, all while providing protected habitat and respite for our non-human inhabitants. Finally, we aim to make the new Johnny Carson Park a nexus between the institutional, residential and commercial contexts. Creating a better way to live, work, play with the LA River as the stage, the meeting place, the common ground, where past and present come together.



MEMORY
REGENERATION
RESILIENCE
CONNECTIONS
COMMUNITY

HISTORY



L A E C

Currently the **LA Equestrian Center** occupies 75 acres, owned by LA City Parks and Recreation, on land that has continuously been used for equestrian purposes predating the establishment of the State of California.



Dr. David Burbank, then owner of 4,600 acres of ranchland, sold a right of way to the **Southern Pacific Railroad**, priming the area to be a transportation and manufacturing hub.

1873



Colonel Griffith J. Griffith and his wife Mary Agnes Christine (Tina) donated over 3,000 acres to the City of Los Angeles creating **Griffith Park**, "to be used as a public park for purposes of recreation, health and pleasure, for the use and benefit of inhabitants of the said City of Los Angeles, forever." No family relation to controversial filmmaker DW Griffith.

1896



The **City of Burbank** was Incorporated and is one of only a few independent cities in the San Fernando Valley not part of the City of Los Angeles.

1911



Olive Avenue was laid out in 1911 from Downtown Burbank southwest to the Cahuenga Pass.



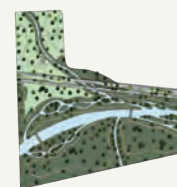
Along the river numerous "movie ranches" were developed to support the production of then popular western films. These ranches later morphed into the studio lots still present today, setting the stage for Burbank's transformation into the "**Media Capital of the World.**"

1920s



Whitnall "Highway" was conceived by Los Angeles' 1st City Planner George Gordon Whitnall, originally planned to be a Parkway to downtown Los Angeles, tunneling underneath Griffith Park.

1920



Negotiations with the City of Los Angeles Department of Water and Power resulted in the purchase of approximately 51 acres for future park development in an effort to beautify the L.A. River area. The site was officially named Buena Vista Park. On April 29 1992 Buena Vista Park was renamed **Johnny Carson Park** to honor the host of NBC's 'Tonight Show'. In 2016, the Park reopened after a major redesign by AHBE Landscape Architects.

1942



Forest Lawn Memorial Park - Hollywood Hills was designed to provide a rural effect in the heart of the Los Angeles metropolitan area. **Mount Sinai Memorial Park** opens, to become the largest Jewish Cemetary in California.

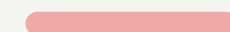
1946

1953



Completion of channelization of the Los Angeles river, begun in 1938, to form a fifty-one mile engineered waterway.

1960



Burbank segment of **Interstate 5** completed. This interstate runs from the Mexican border south of San Diego to the Canadian Border north of Seattle.

1964



The **134 Freeway** becomes the main connector between the San Fernando Valley and the San Gabriel Valley - essentially connecting the 210 ['Foothill Freeway'] to the 101 ['Ventura Freeway']

1971



Projected opening of **North Hollywood | Pasadena Rapid Transit Corridor.**

2024

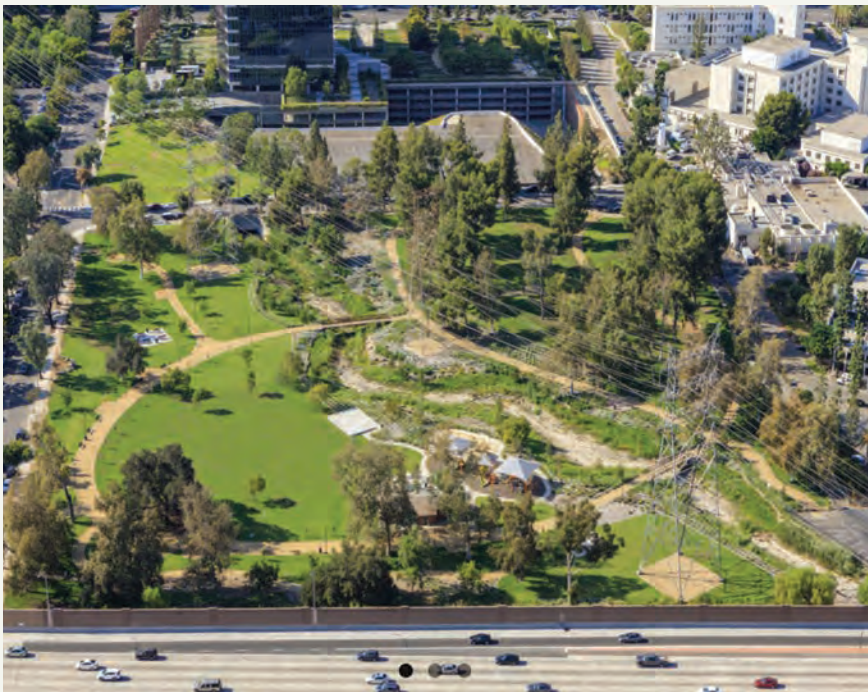
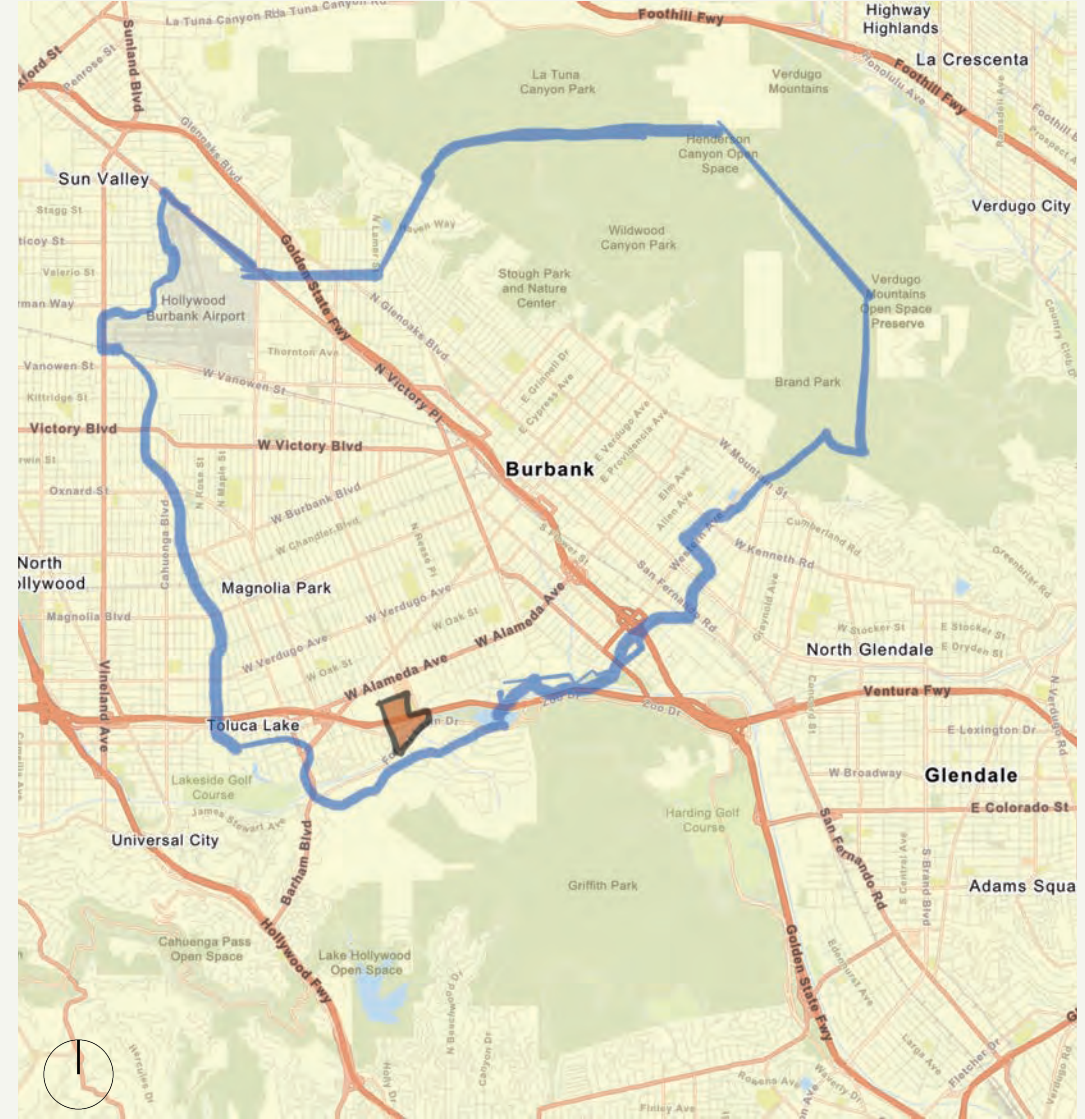
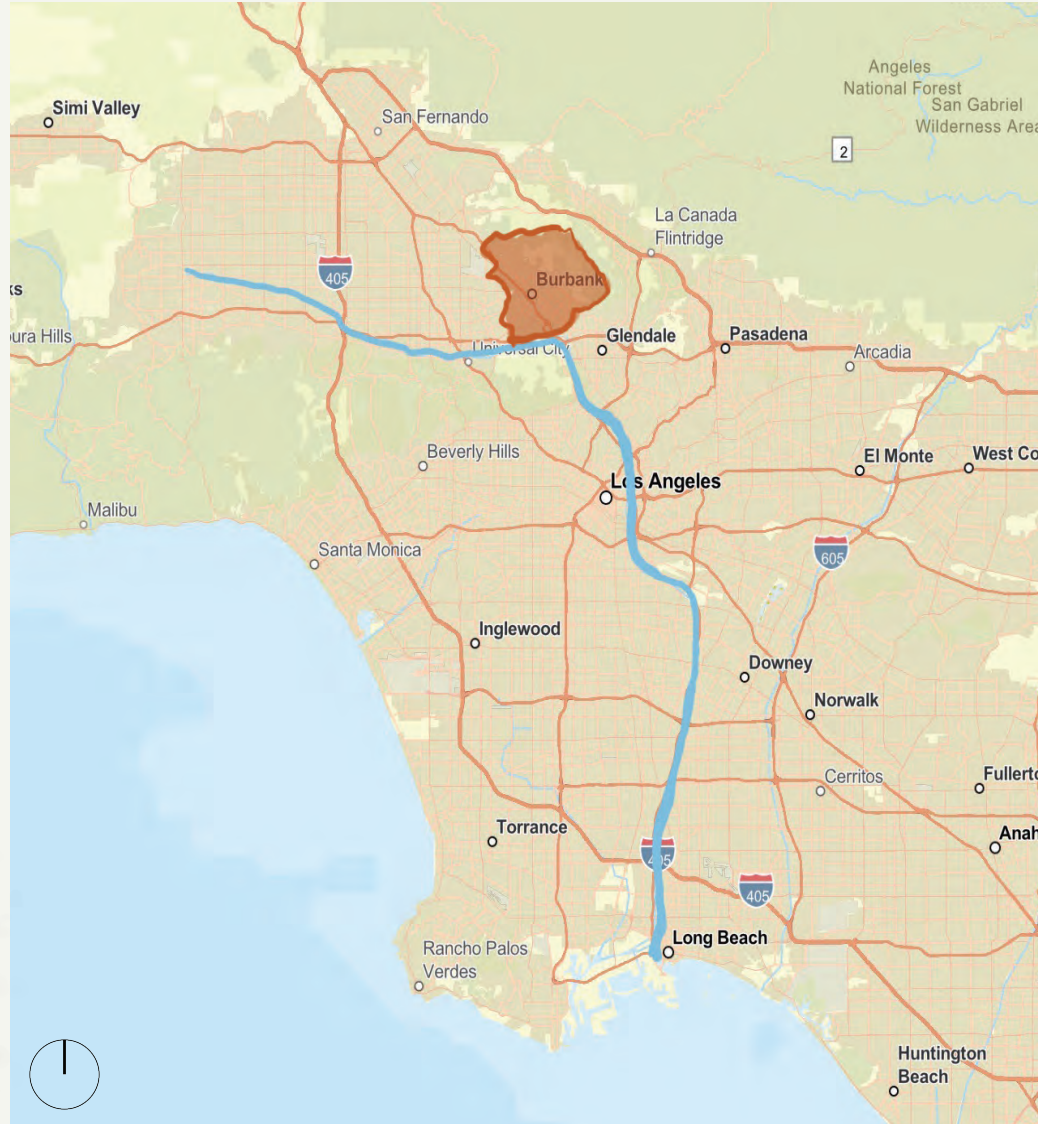
Metrolink Stations

STATE OF CALIFORNIA

BURBANK AND THE LA RIVER

JOHNNY CARSON PARK - 400 Bob Hope Drive

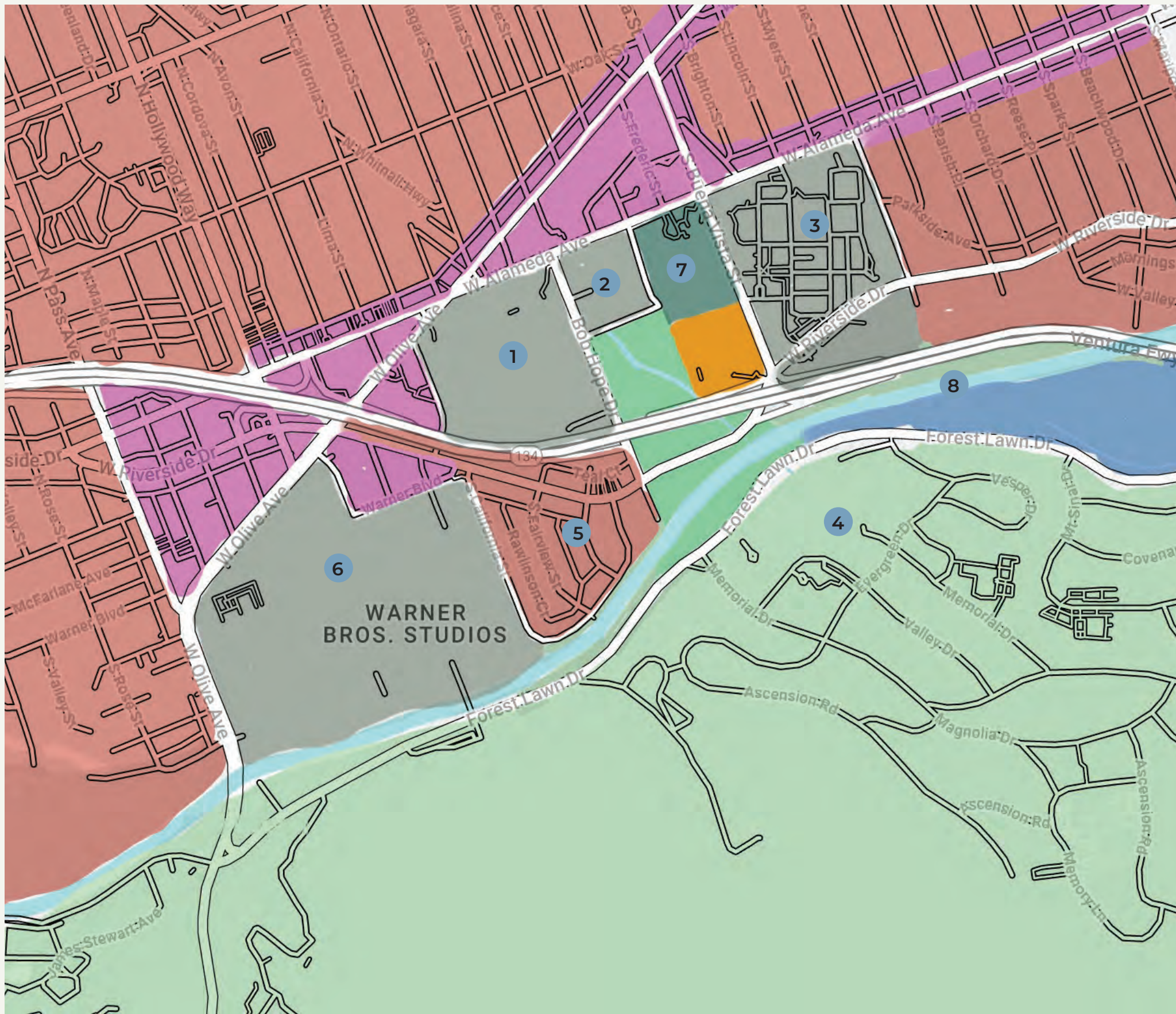
LOCATION










The city of Burbank is located in the southeastern side of the San Fernando Valley in Los Angeles California. With a population of 108,000 people. The city was named after David Burbank, a sheep farmer who established a ranch in this area in 1867. Burbank is a hub of rail and air travel as well as both commercial and residential districts, as well as many media studios such as Disney, Burbank and Warner Bros Studios.

Johnny Carson Park is a 9.9 acre multi use, urban park located southwest Burbank along the LA River and adjacent to the 134 Freeway. This park features large picnic areas, fitness zones, playgrounds, open green spaces as well as a small performance stage. This site houses many events for the local community. This park was revitalized by AHBE Landscape Architects and now includes, observation platforms, creek restoration and improved recreational amenities.

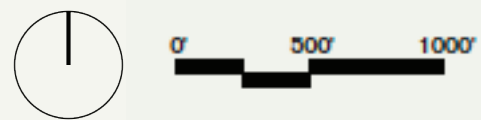
CONTEXT

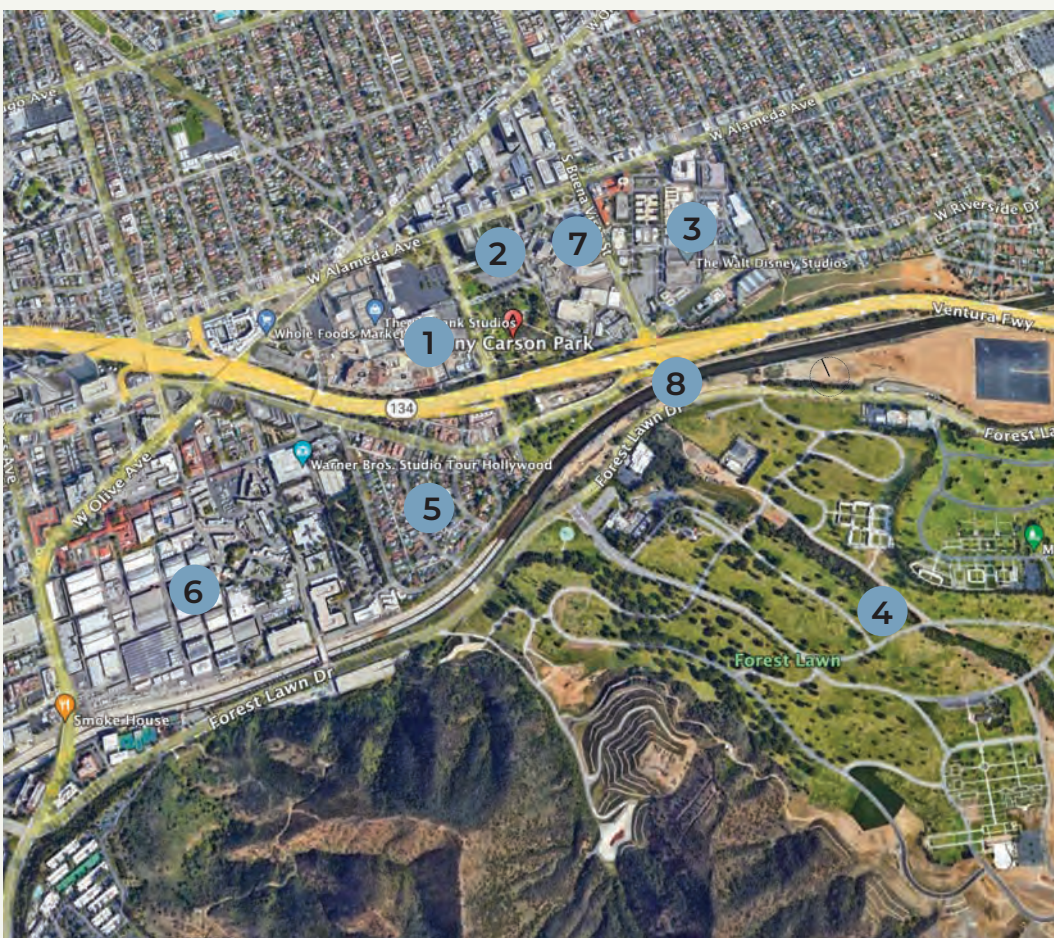


SITE CONTEXT

-  COMMERCIAL
-  RESIDENTIAL
-  PROVIDENCE HIGH-SCHOOL
-  GREEN SPACE
-  MEDICAL
-  INSTITUTIONAL
-  HEADWORKS PROJECT

-  BURBANK STUDIOS
-  THE POINTE
-  DISNEY STUDIOS
-  FOREST LAWN
-  RESIDENTIAL
-  WARNER BROTHERS
-  SAINT JOSEPH HOSPITAL
-  LA RIVER





AERIAL IMAGES OF SITE

Current images of Johnny Carson Park and the adjacent site context as of 2023. You can see the 134 free way cutting through the site parallel to the LA River. In addition the location of media studios, institutional areas as well as residential and commercial sites.

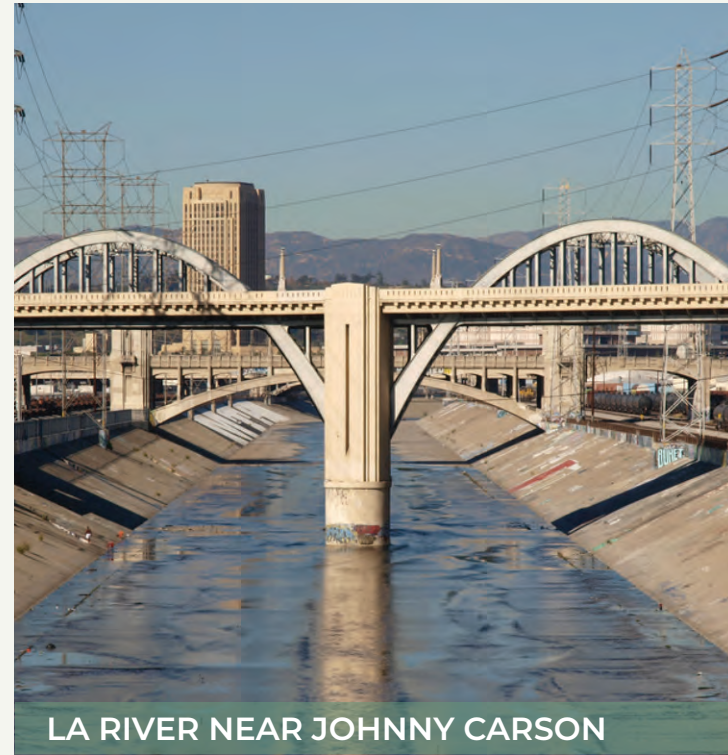
- 1 BURBANK STUDIOS
- 2 THE POINTE
- 3 DISNEY STUDIOS
- 4 FOREST LAWN
- 5 RESIDENTIAL
- 6 WARNER BROTHERS
- 7 SAINT JOSEPH HOSPITAL
- 8 LA RIVER

THE LA RIVER

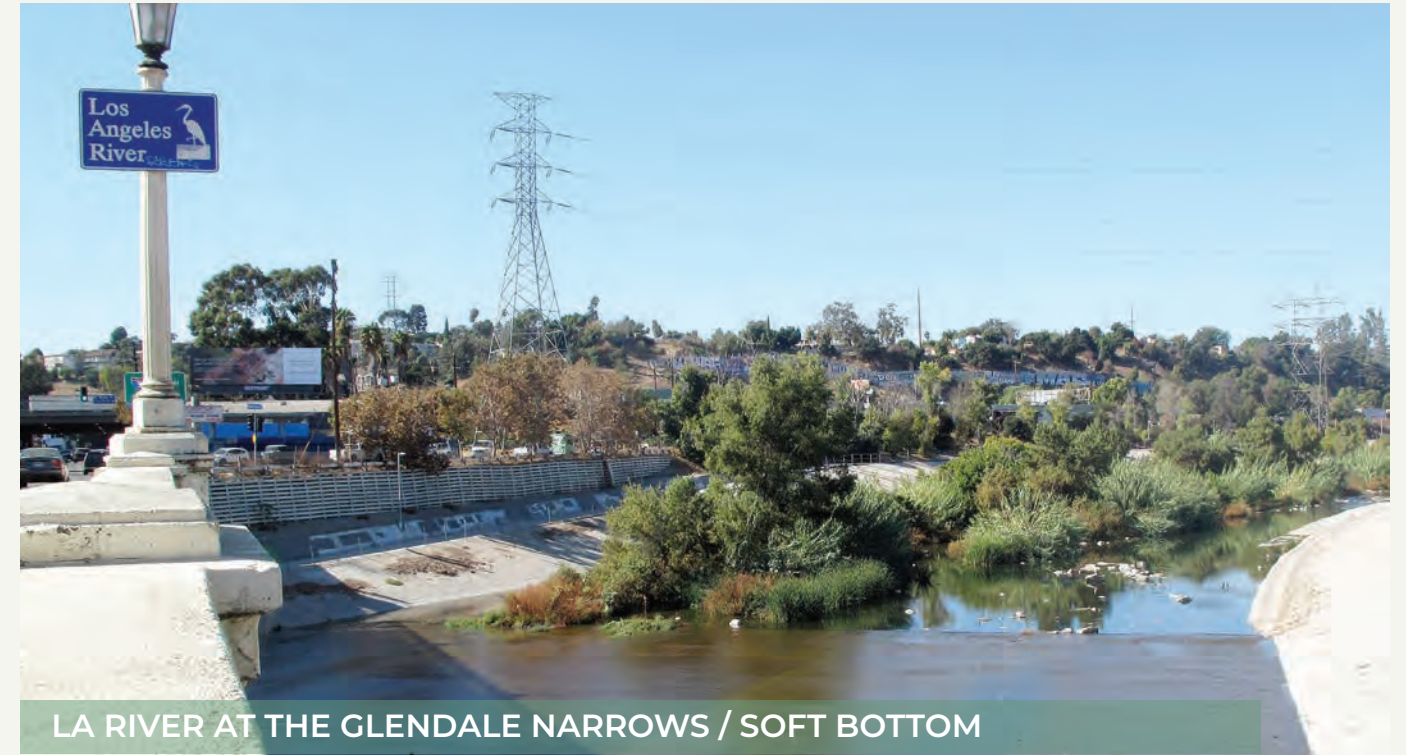
THE LA RIVER

The Los Angeles River (Spanish: Río de Los Ángeles), historically known as the Porciúncula River (Río Porciúncula), is a major river in Los Angeles County, California. Its headwaters are in the Simi Hills and Santa Susana Mountains, and it flows nearly 51 miles (82 km) from Canoga Park through the San Fernando Valley, Downtown Los Angeles, and the Gateway Cities to its mouth in Long Beach, where it flows into San Pedro Bay.

LA RIVER TRIBUTARIES



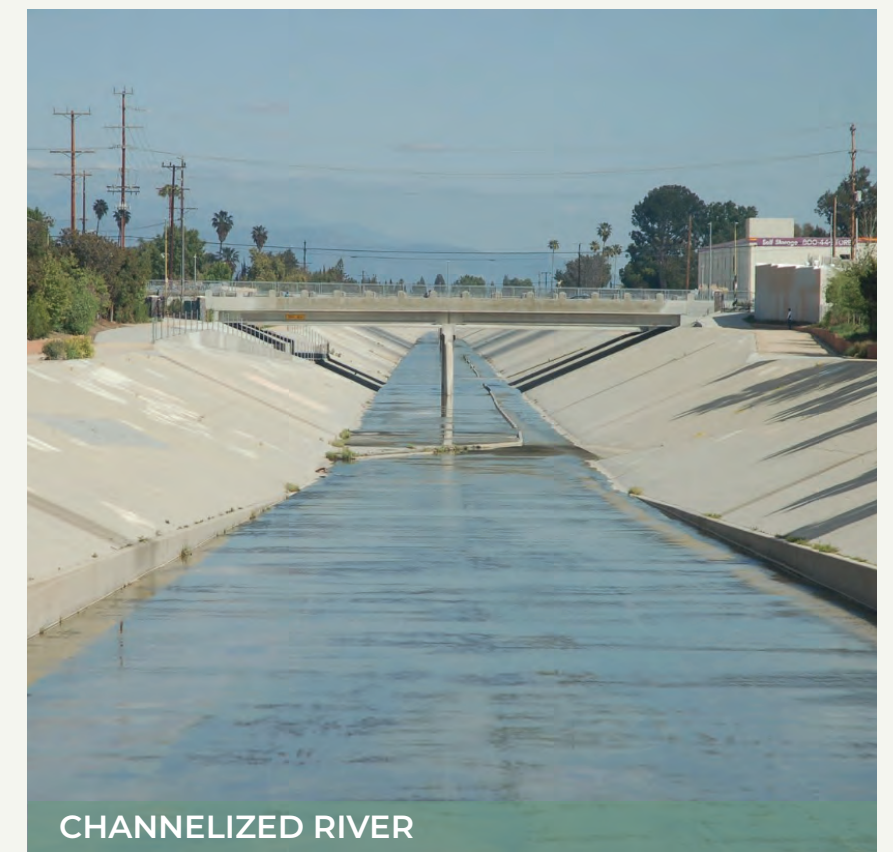
LA RIVER NEAR JOHNNY CARSON



LA RIVER AT THE GLENDALE NARROWS / SOFT BOTTOM



LA RIVER IN STORM EVENT



CHANNELIZED RIVER

THE LA RIVER



LA RIVER SOFT BOTTOM SITE



LA RIVER SOFT BOTTOM SITE



LA RIVER PRIOT TO CHANNELIZATION



LA RIVER ADJACENT TO JOHNNY CARSON PARK



LA RIVER ADJACENT TO JOHNNY CARSON PARK



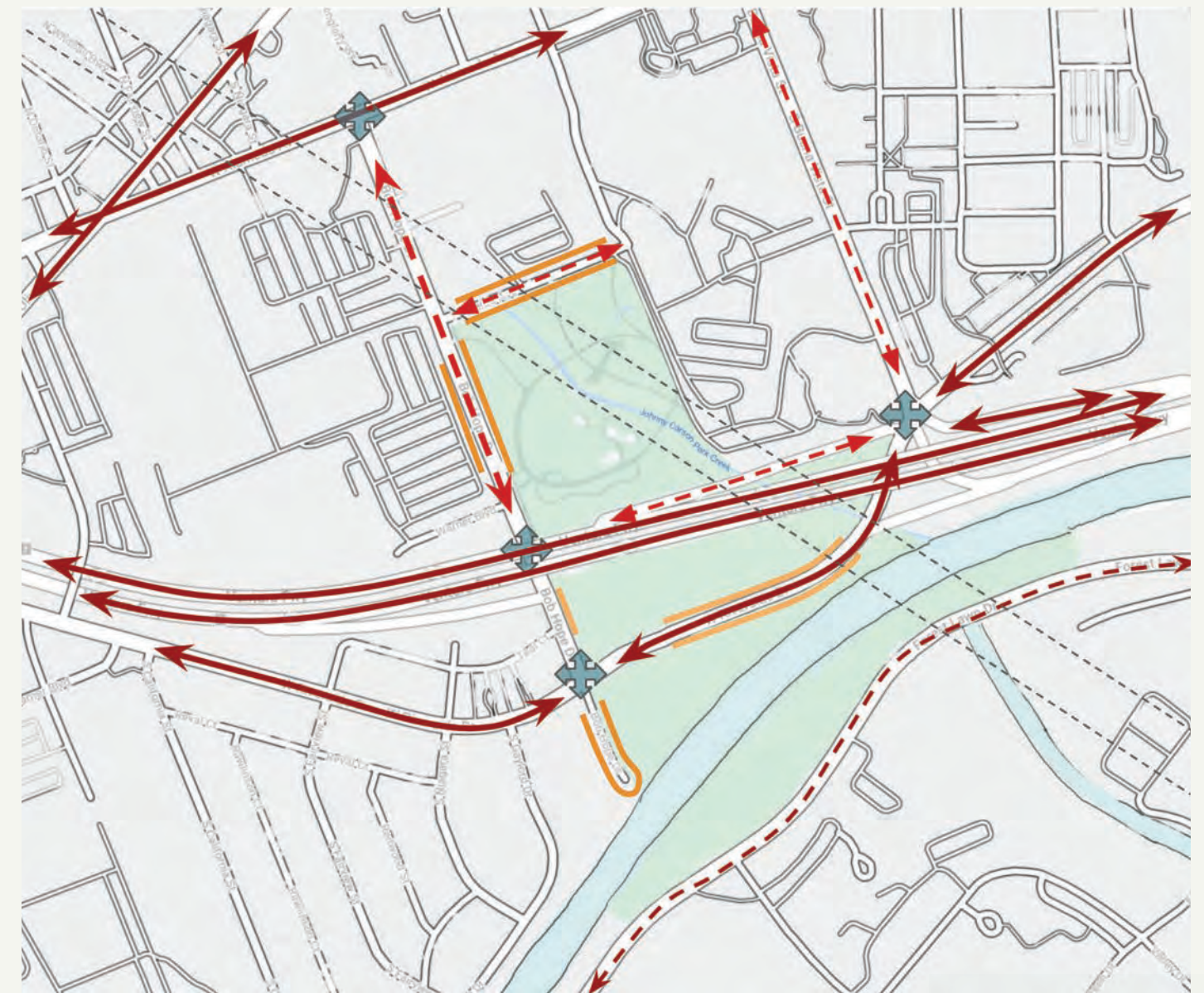
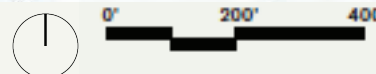
LA RIVER ADJACENT TO JOHNNY CARSON PARK

CIRCULATION



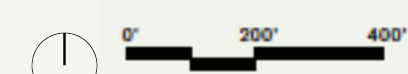
PEDESTRIAN CIRCULATION

- - - PRIMARY PEDESTRIAN CIRCULATION
- . . . SECONDARY PEDESTRIAN CIRCULATION
- BUSY INTERSECTION
- HORSE TRAIL
- BIKE PATH
- ACCESS POINTS
- - - HIGH TENSION LINES
- ◇ BUS STOPS



VEHICULAR CIRCULATION

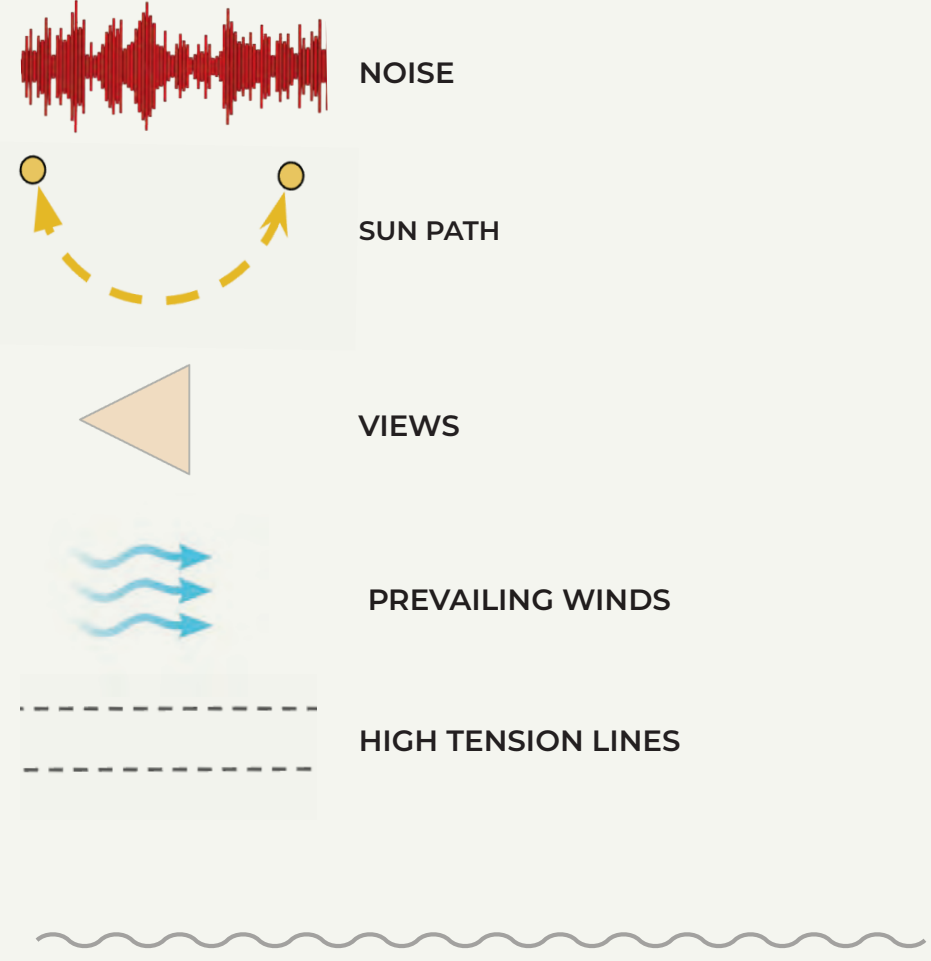
- ↔ PRIMARY VEHICULAR CIRCULATION
- - - ↔ SECONDARY VEHICULAR CIRCULATION
- STREET PARKING
- BUSY INTERSECTION
- - - HIGH TENSION LINES



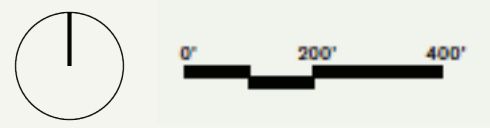
SENSORY FACTORS



SENSORY EXPERIENCE

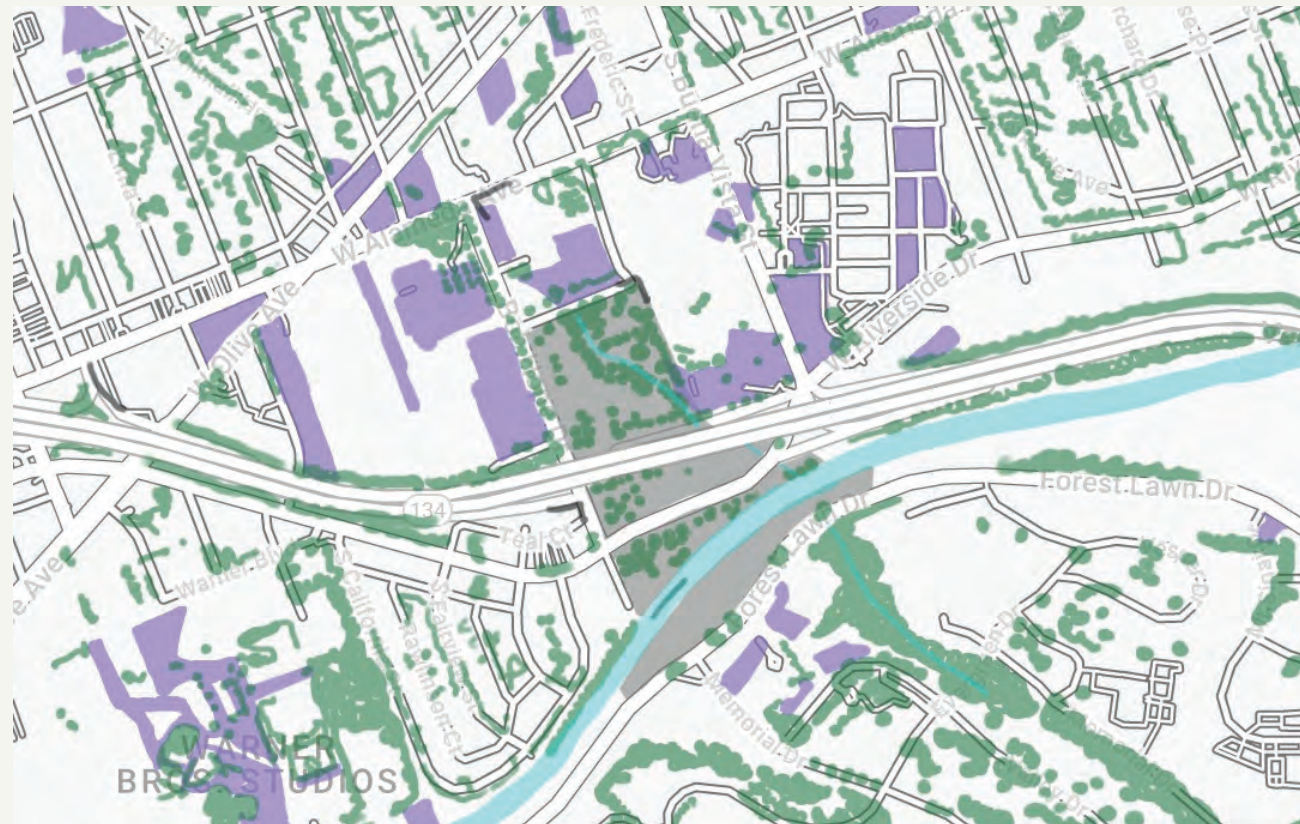


- 1 BURBANK STUDIOS
- 2 THE POINTE
- 3 DISNEY STUDIOS
- 4 FOREST LAWN
- 5 RESIDENTIAL
- 6 WARNER BROTHERS
- 7 SAINT JOSEPH HOSPITAL
- 8 LA RIVER



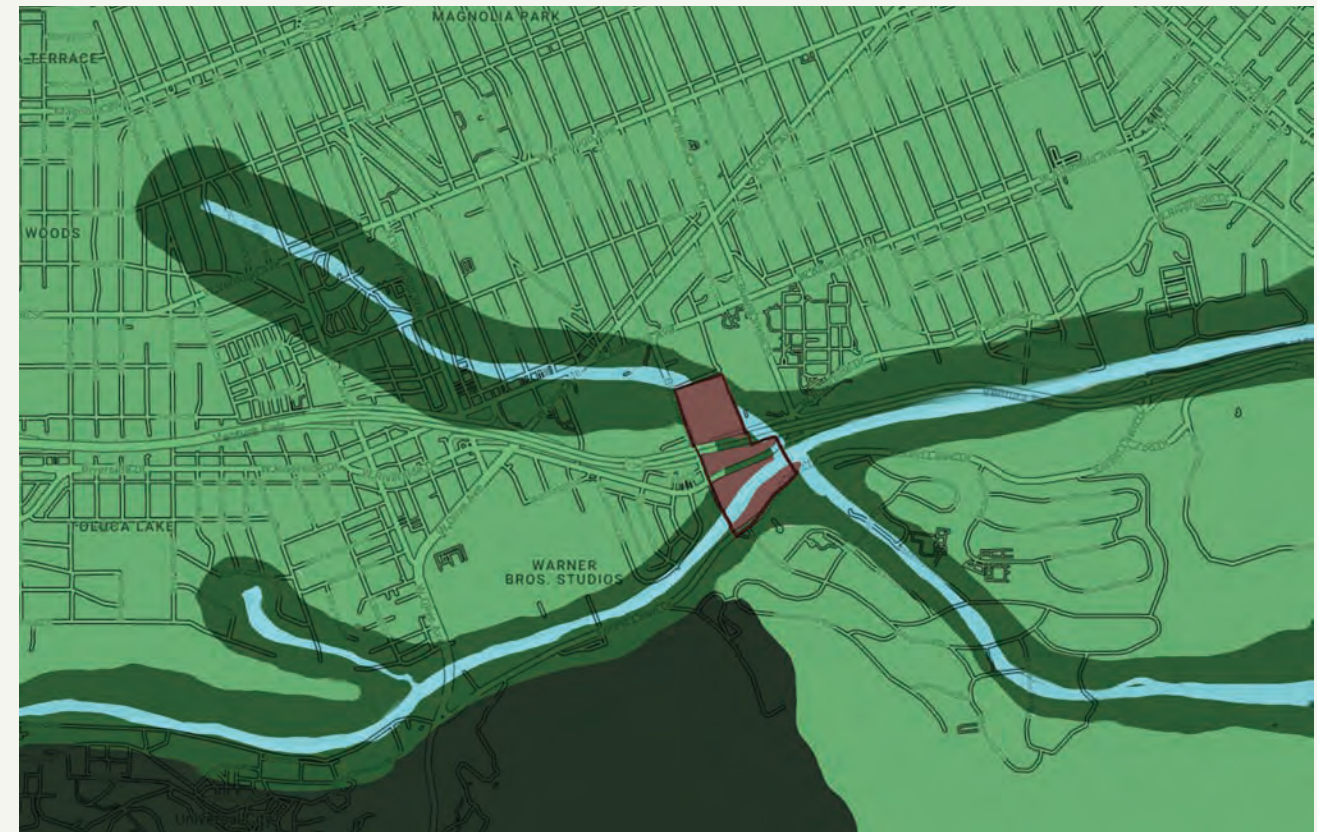
NATURAL FEATURES

TREE CANOPY AND LARGE PAVED SPACES



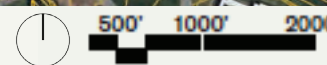
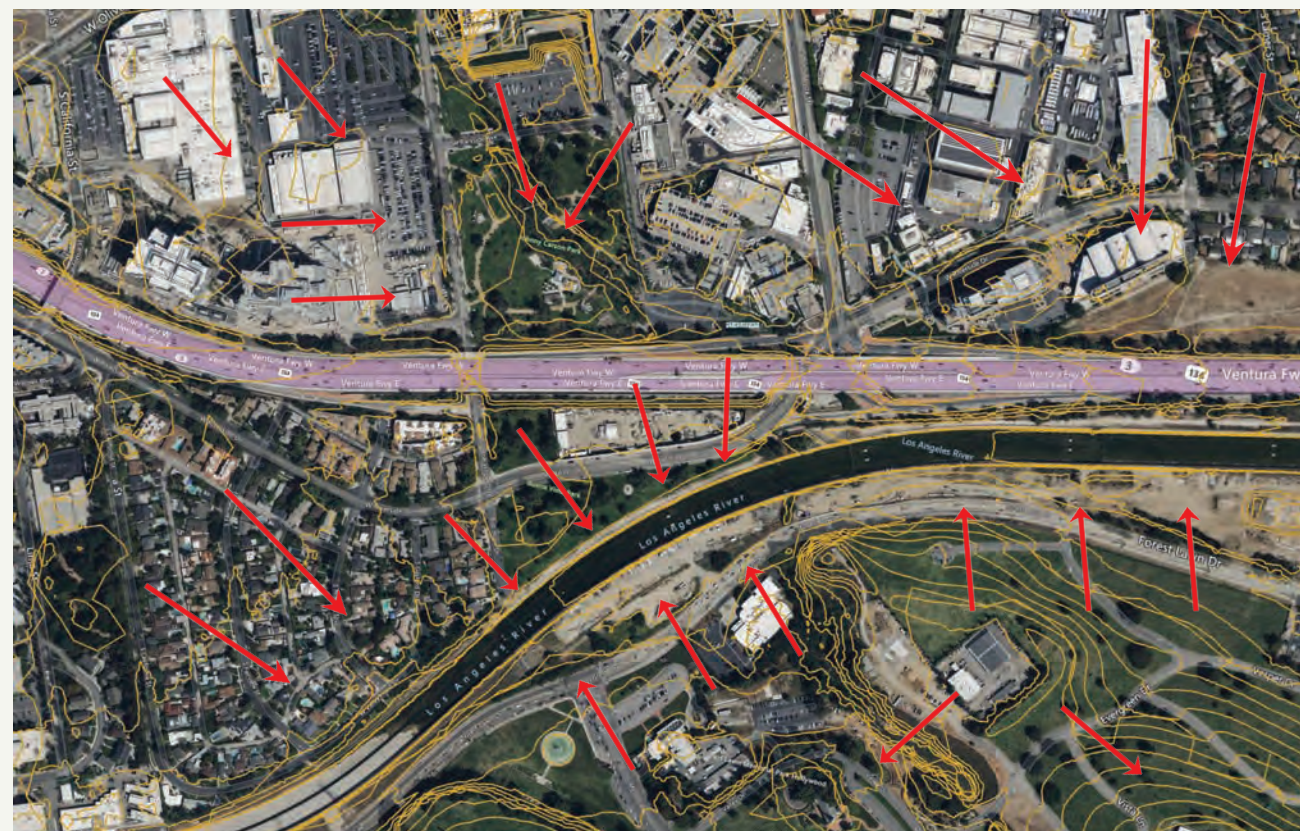
- LARGE PAVED SURFACES
- LA RIVER
- PROJECT SITE
- TREE CANOPY

HISTORIC VEGETATION

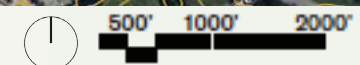
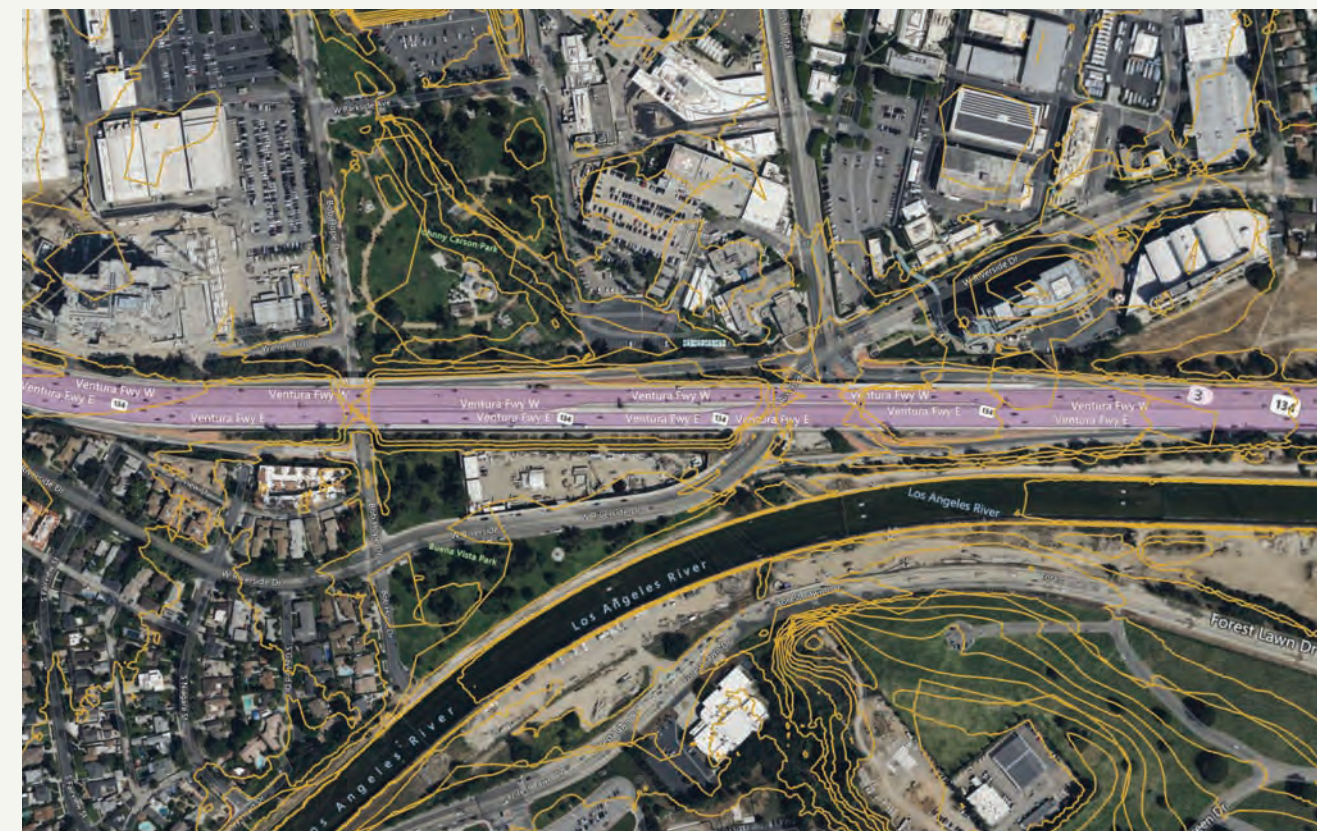


- LA RIVER
- OAK WOODLAND
- RIPARIAN
- SAGE SCRUB / CHAPARRAL
- PROJECT SITE

SLOPE DIRECTION



TOPOGRAPHY



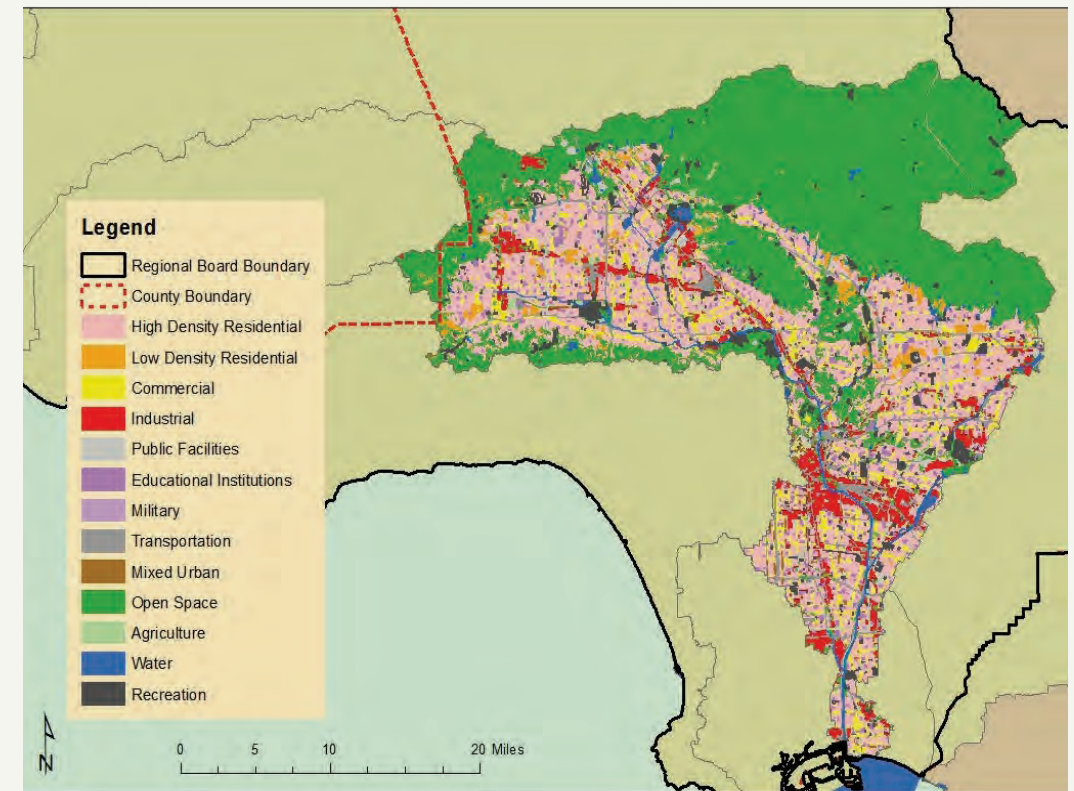
WATERSHEDS



LA RIVER WATERSHED

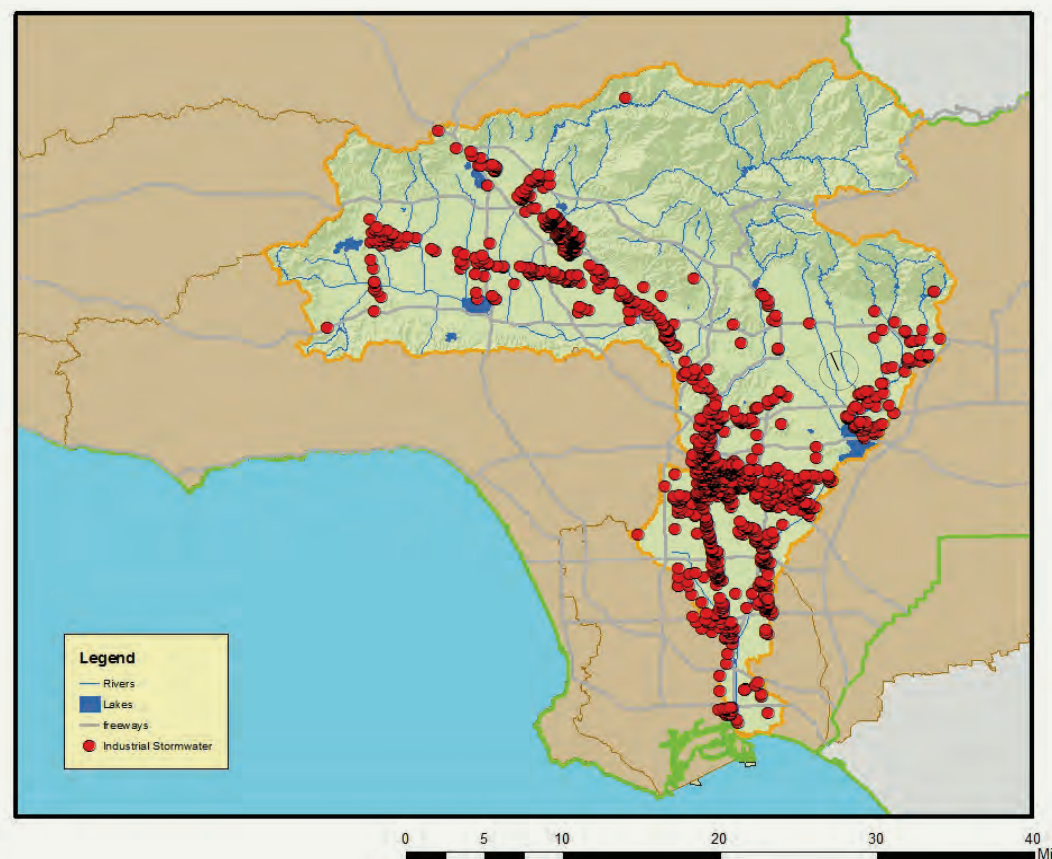


LAND USE IN THE LOS ANGELES RIVER WATERSHED

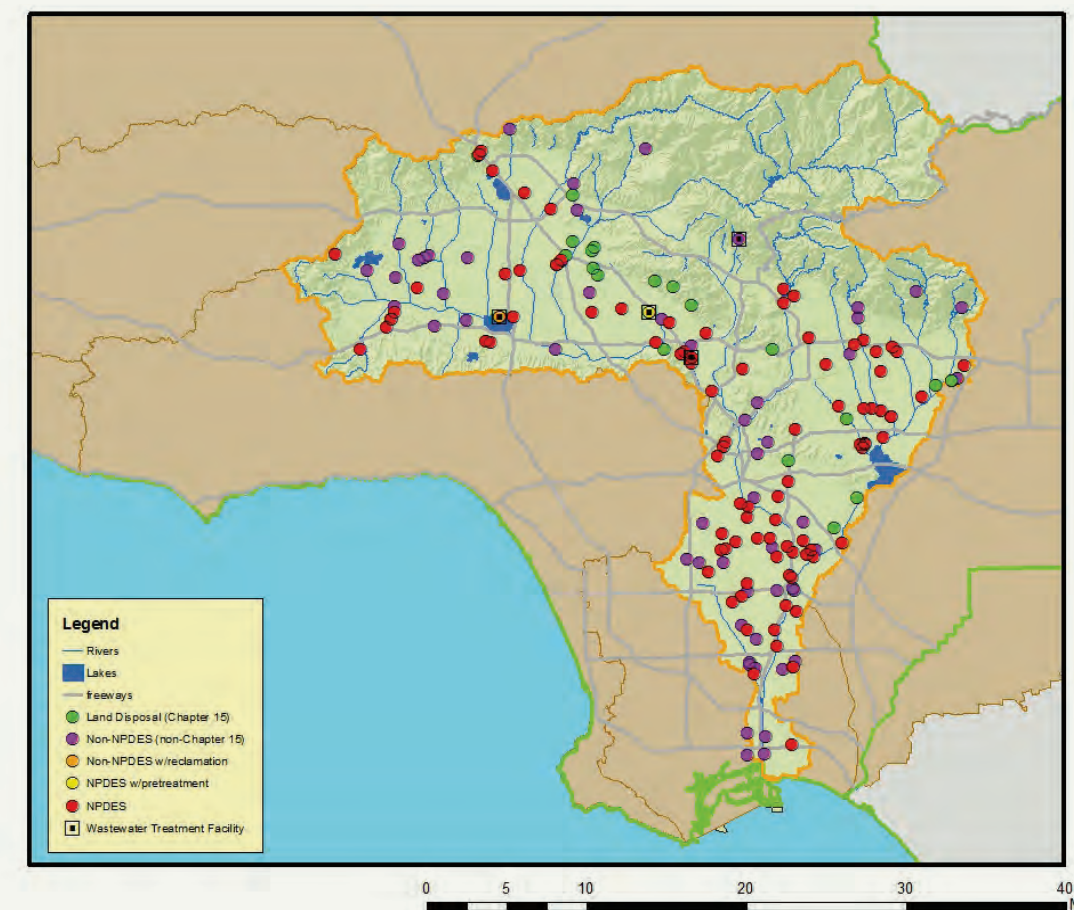


The Los Angeles (LA) River Watershed is one of the largest in the Region at 824 square miles; the river is 55 miles long. It is also one of the most diverse in terms of land use patterns. Approximately 324 square miles of the watershed are covered by forest or open space land including the area near the headwaters which originate in the Santa Monica, Santa Susana, and San Gabriel Mountains. The rest of the watershed is highly developed. Major tributaries to the river in the San Fernando Valley are the Pacoima Wash, Tujunga Wash (both drain portions of the Angeles National Forest in the San Gabriel Mountains), Burbank Western Channel and Verdugo Wash (both drain the Verdugo Mountains). Due to major flood events at the beginning of the century, river was lined with concrete.

INDUSTRIAL STORM WATER DISCHARGE



NON STORM WATER DISCHARGE



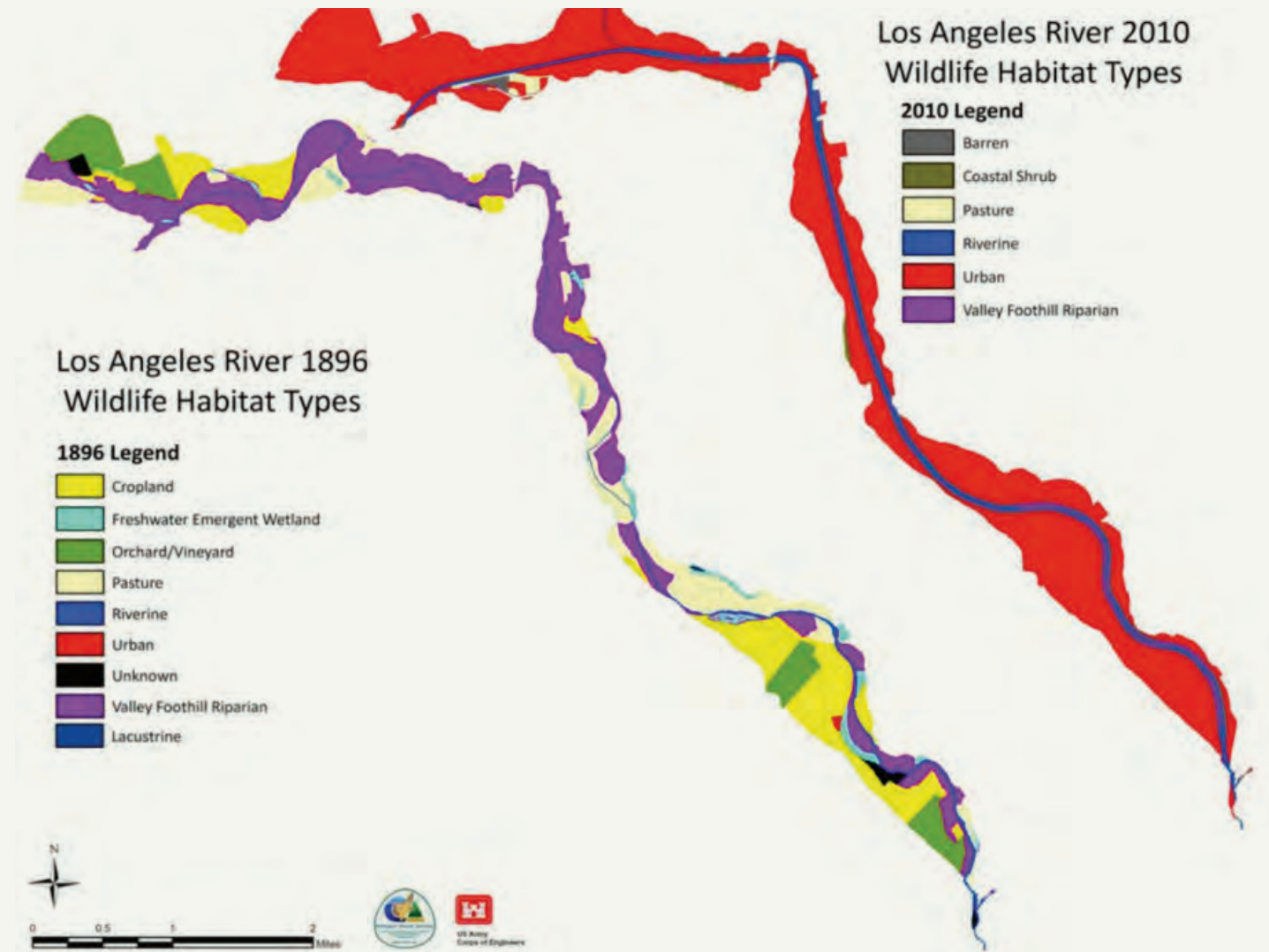
• https://www.waterboards.ca.gov/rwqcb4/water_issues/programs/regional_program/Water_Quality_and_Watersheds/los_angeles_river_watersheds

HISTORICAL ANALYSIS

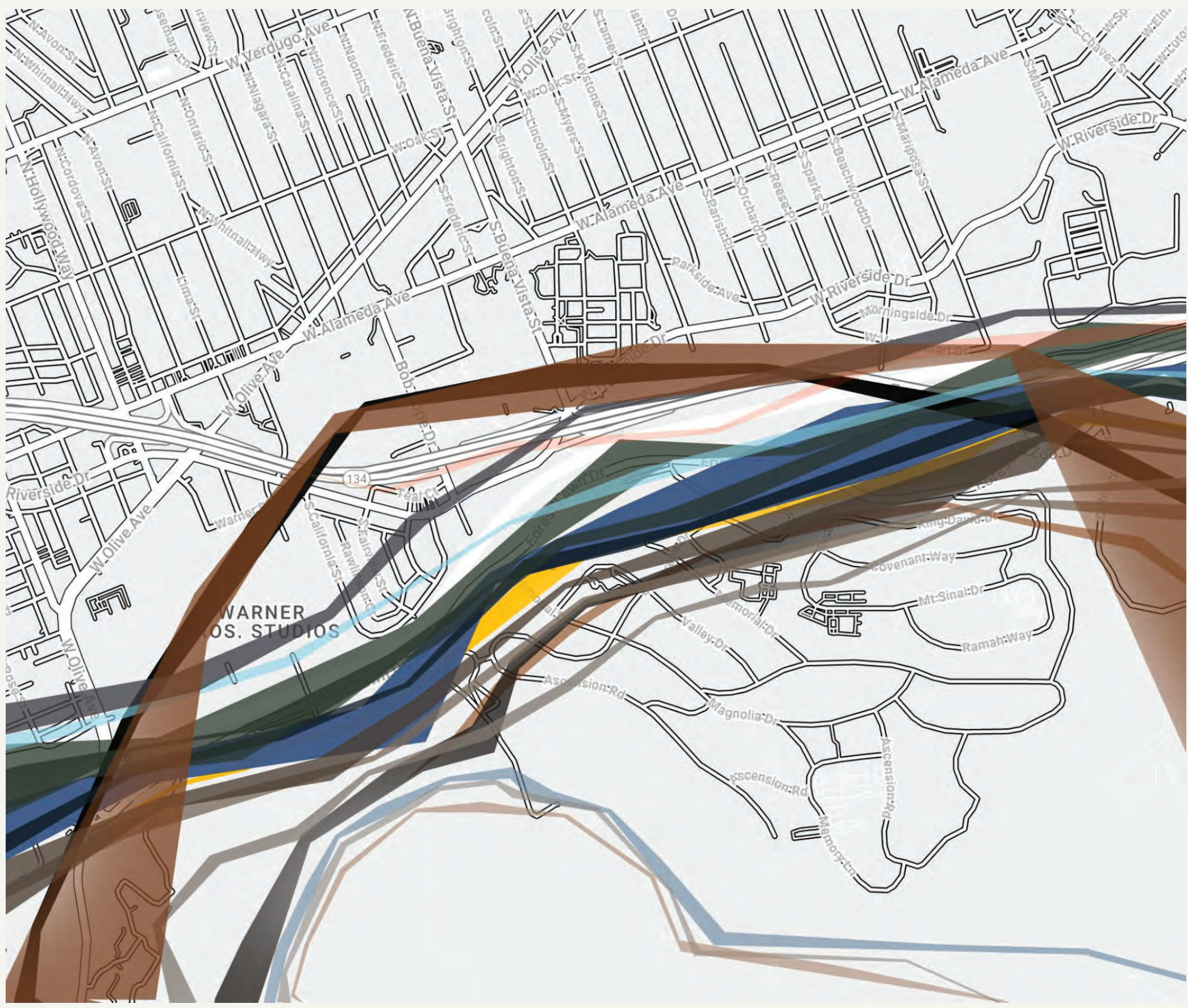


NATIVE TRIBAL TERRITORIES

- GABRIELINO TONGVA
- FERNANDEÑO TATAVIAM BAND OF MISSION INDIANS
- CHUMASH

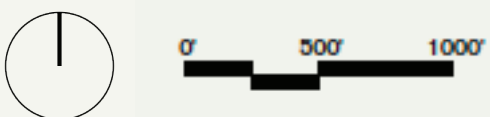


FLIGHT PATH



FLIGHT PATH KEY

- RED TAILED HAWK
- BLUE HERON
- LOGGERHEAD SHRIKE
- COOPER'S HAWK
- RUFOUS CROWNED SPARROW
- RED WINGED BLACKBIRD
- RED SHOULDERED HAWK
- GREEN HERON
- CANYON WREN
- WRENIT
- RUDY DUCK
- ROBIN
- KINGFISHER
- SCRUB JAY
- TURKEY VULTURE
- KILDEER
- MALLARD
- YELLOW WARBLER
- OSPREY



BIRDS



Blue Heron -
Ardea herodias



Black-Necked Stilt -
Himantopus mexicanus



Osprey-
Pandion haliaetus



Loggerhead Shrike
Lanius ludovicianus



Mallard-
Anas platyrhynchos



Red Tailed Hawk-
Buteo jamaicensis



Killdeer-
Charadrius vociferus



Red Winged Blackbird-
Agelaius phoeniceus

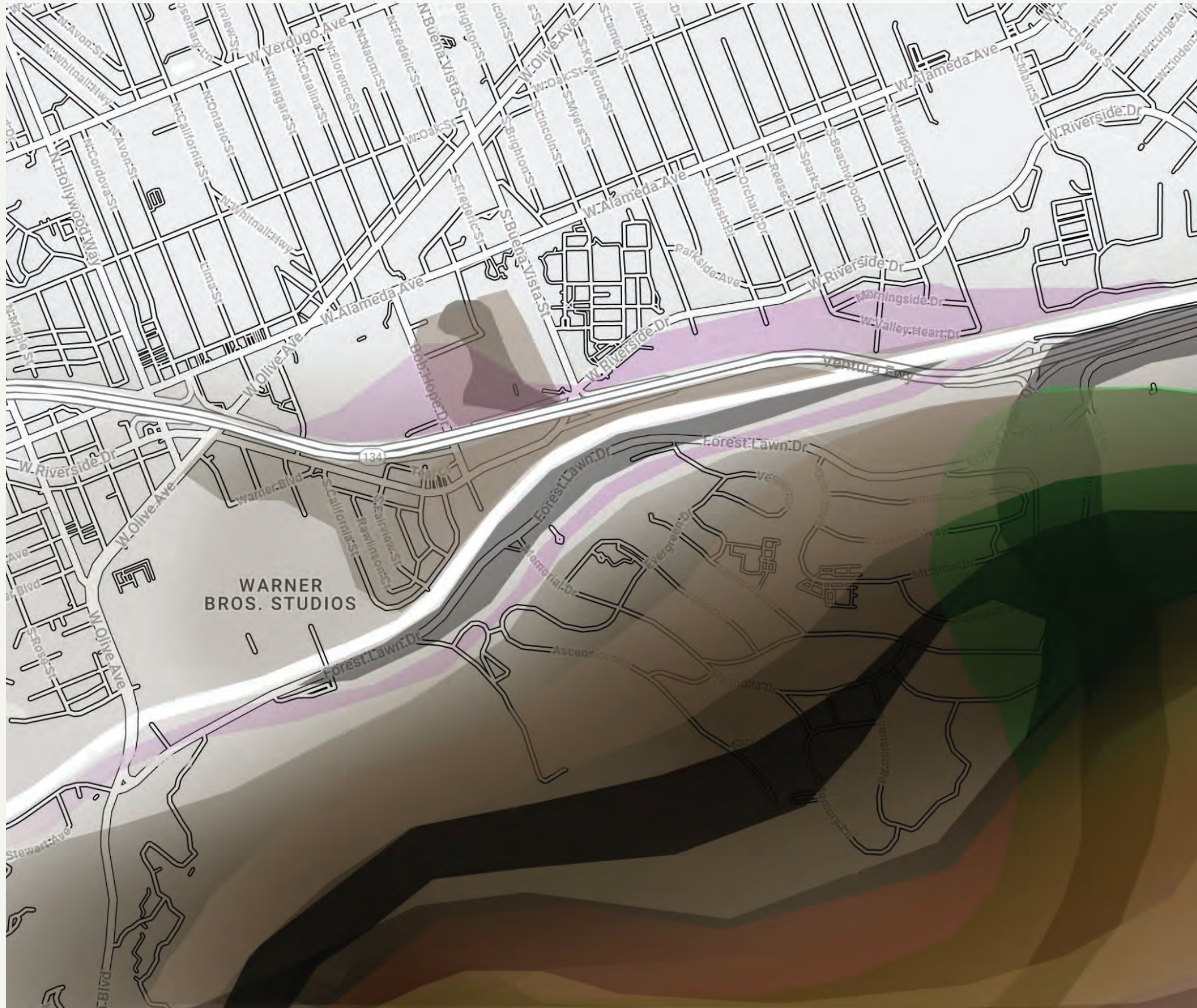


Snowy Egret-
Egretta thula



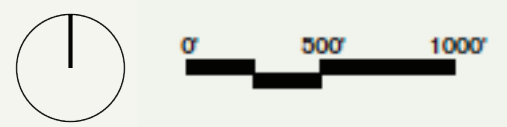
Scrub Jay -
Aphelocoma californica

MAMMALS



MAMMAL OCCURANCE

-  OPOSSUM
-  WESTERN MASTIFF BAT
-  DESERT COTTONTAIL RABBIT
-  WESTERN RED BAT
-  MULE DEER
-  CALIFORNIA GROUND SQUIRREL
-  WESTERN GREY SQUIRREL
-  DESERT WOODRAT
-  COYOTE
-  BOBCAT
-  RACCOON
-  STRIPED SKUNK



MAMMALS



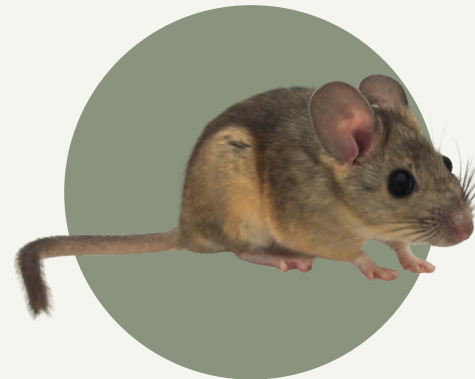
Coyote -
Canis latrans



Skunk-
Spilogale gracilis



Opossum-
Didelphis marsupialis



Desert Woodrat -
Neotoma lepida



Raccoon-
Procyon lotor



Mule Deer-
Odocoileus hemionus



Killdeer-
Sylvilagus audubonii



Gray Fox-
Urocyon cinereoargenteus



Bob Cat-
Lynx rufus



Western Grey Squirrel -
Sciurus griseus

TREES



Coast Live Oak -
Quercus agrifolia



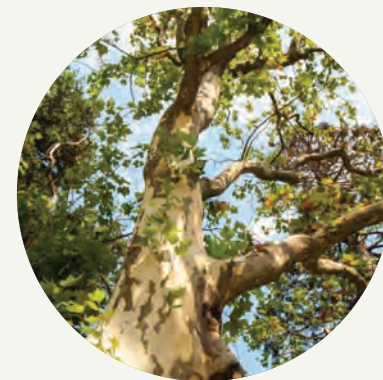
Bishop Pine-
Pinus muricata



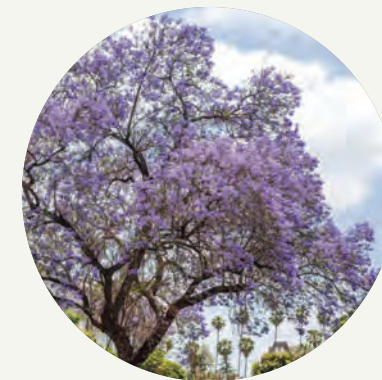
Arroyo Willow-
Salix lasiolepis



White Alder -
Alnus rhombifolia



Western Sycamore
Platanus racemosa



Jacaranda-
Jacaranda mimosifolia



American Sweetgum-
Liquidambar styraciflua



Mayten Tree-
Maytenus boaria



Ginko-
Ginkgo Biloba



Red Ironbark-
Eucalyptus sideroxylon



Scrub Jay -
Aphelocoma californica



Callery Pear -
Pyrus calleryana

OPPORTUNITIES

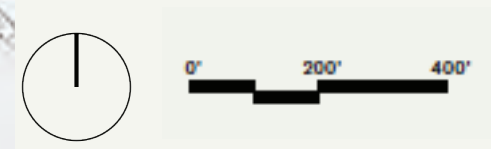


OPPORTUNITIES

- 01 PROXIMITY TO GRIFFITH PARK
- 02 ADJACENT TO LOS ANGELES RIVER
- 03 HISTORIC BIRD MIGRATION FLYWAY ROUTE
- 04 VACANT SPACE LEFT BY FREEWAY
- 05 VIEWS OVERLOOKING RIVER
- 06 SENNETT CREEK WILDLIFE CULVERT CONNECTIVITY
- 07 INTACT CREEK BEDS
- 08 LA RIVER TRIBUTARIES IMPROVE LA RIVER HABITAT
- 09 FOOT BRIDGE CROSSING RIVER
- 010 STORM WATER , FLOOD WATER DIVERSION

PROJECT SITE

PROJECT SITE



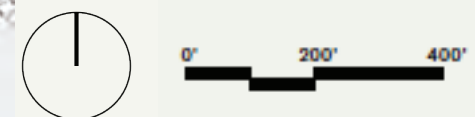
CONSTRAINTS



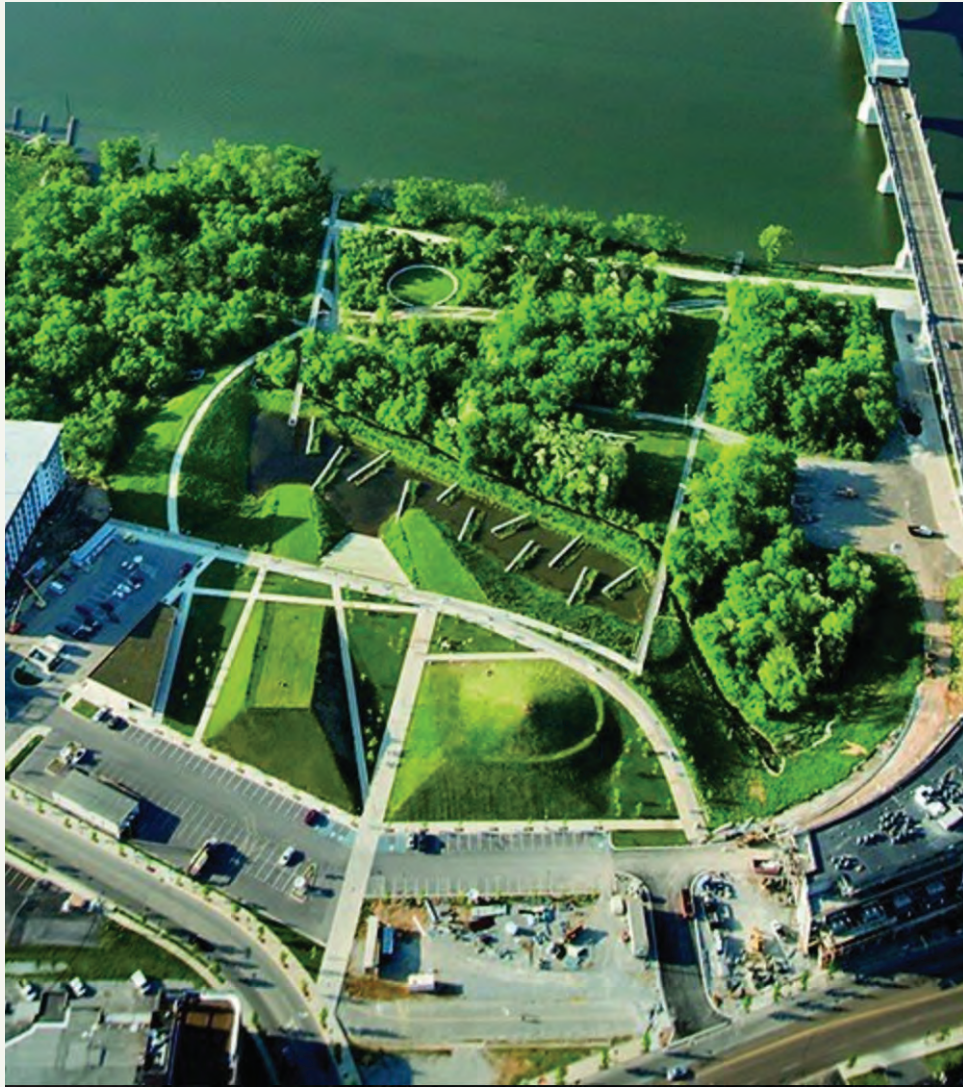
CONSTRAINTS

- X1** CHANNELIZATION OF 48 MILES OF RIVER
- X2** HEAVY TRAFFIC (SAFETY FOR HUMANS + WILDLIFE)
- X3** CEMETERY / HEAVY LAWN + WATER USE
- X4** STORM WATER RUN OFF , HEAVY METALS , CONTAMINANTS
- X5** CAR EMISSION AREAS
- X6** PAVED AREAS PREVENTING WATER CAPTURE
- X7** FULL SUN
- X8** ISOLATED NATURAL AREA WITHOUT CORRIDOR
- X9** POWER LINES
- X10** NO RIVER CROSSING

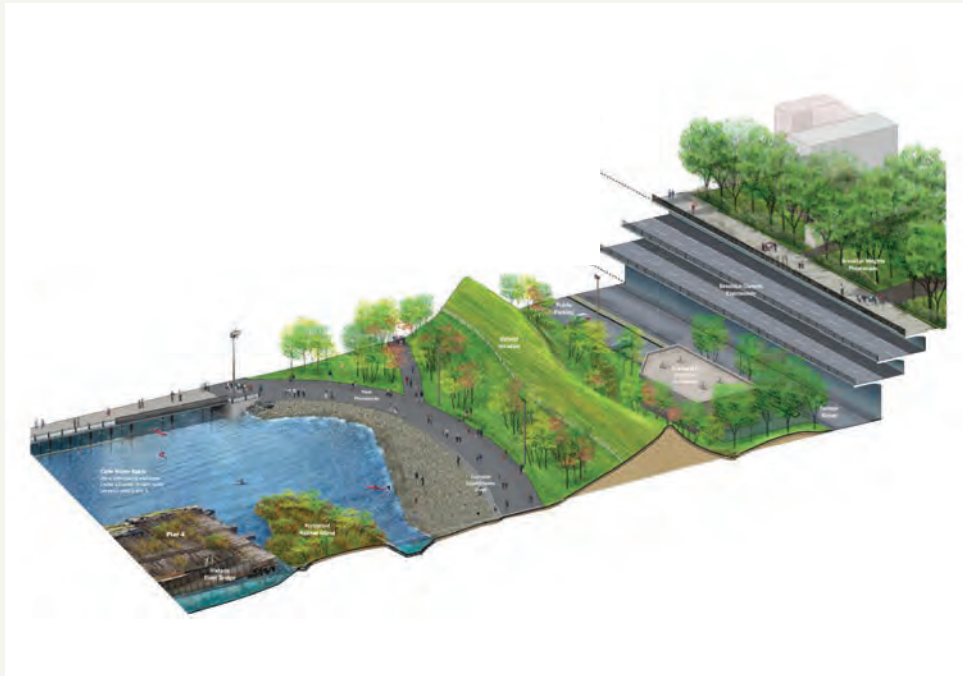
PROJECT SITE
 PROJECT SITE



CASE STUDY SITES



RENAISSANCE PARK- BERMS, TRIBUTARIES, OPEN SPACE, WALKWAYS, CONNECTIONS



BROOKLYN BRIDGE PARK- BERM, PEDESTRIAN PROMENADE, EAST RIVER CONNECTION



RENAISSANCE PARK- BERMS, TRIBUTARIES, WALKWAYS, CONNECTIONS



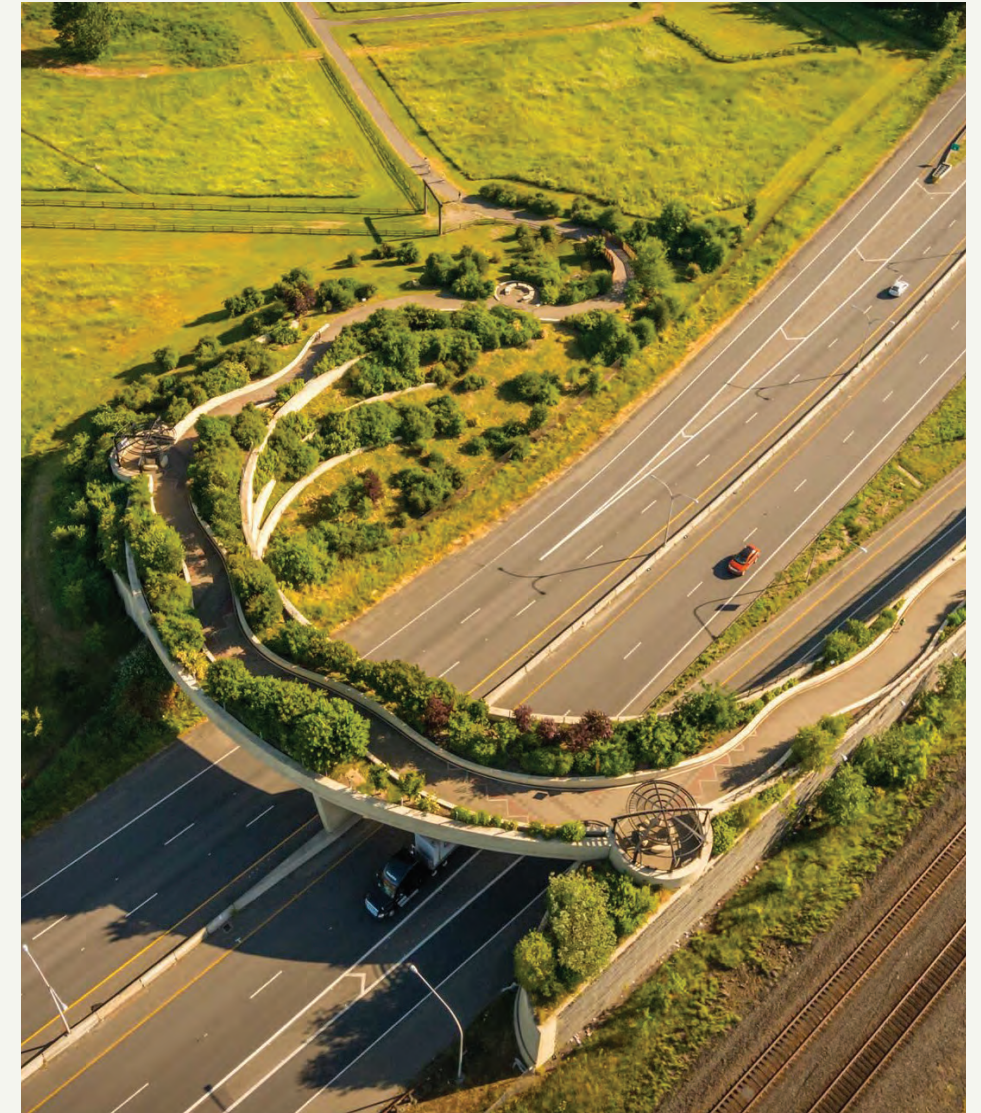
LOS ANGELES STATE HISTORIC PARK- CONNECTIONS, RIVER ADJACENT



BROOKLYN BRIDGE PARK - BERM , PROMENADE AND WALKWAYS



CONFLUENCE PROJECT- CONNECTIONS TO RIVER, NATURAL AREAS, MEMORY



CONFLUENCE PROJECT- CONNECTIONS, MEMORY, REGCOGNITION, NATURAL AREAS

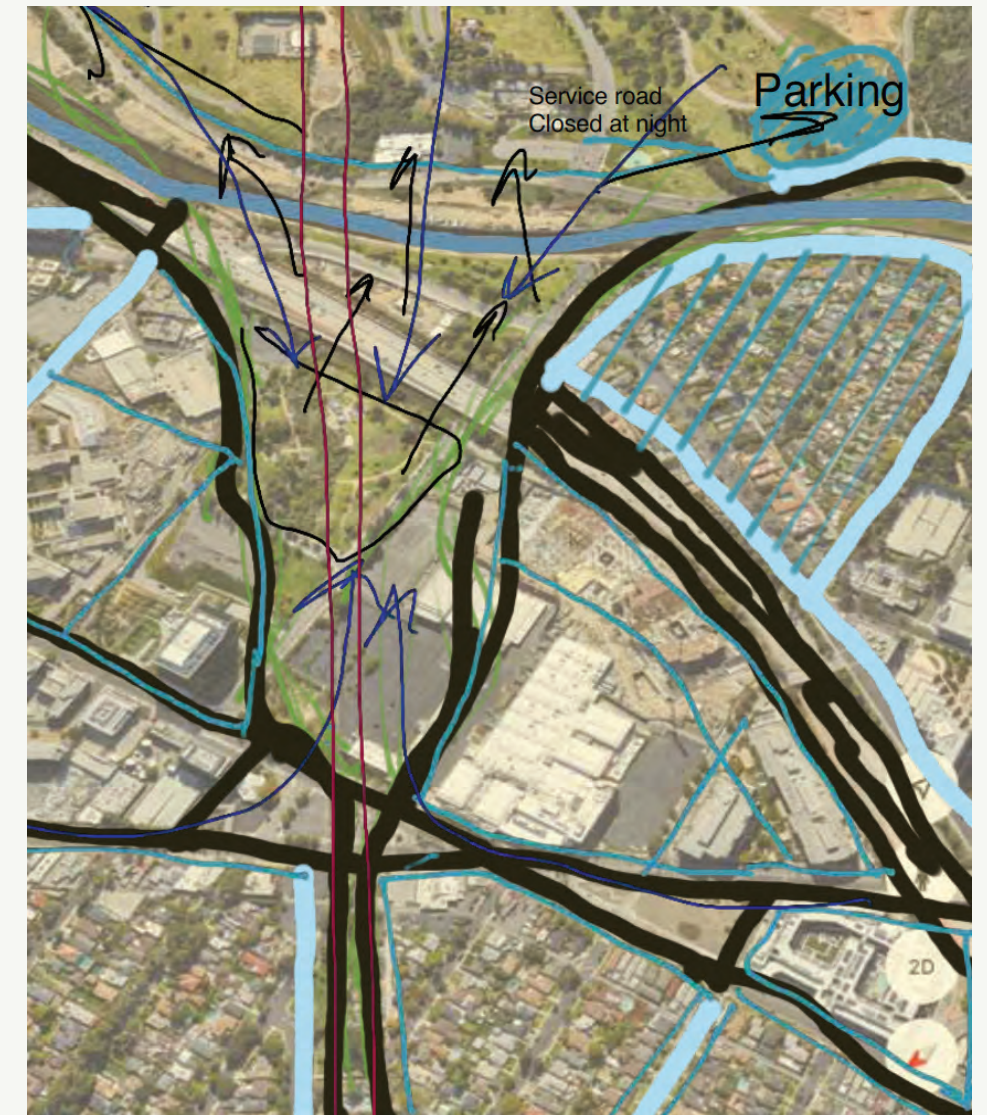
CONCEPT DEVELOPMENT



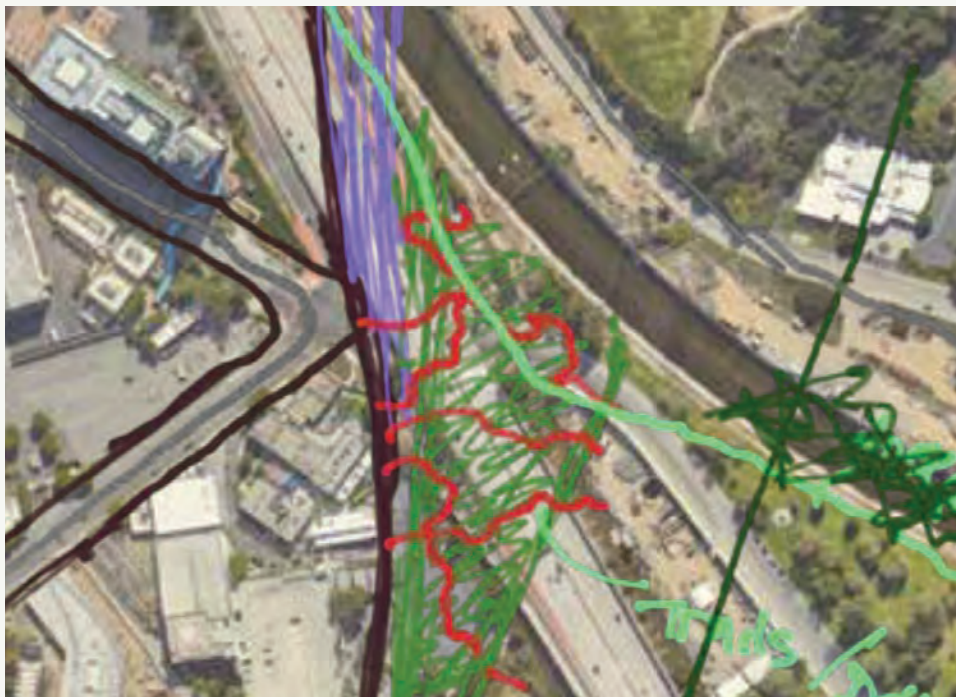
CONNECTION AND SITE STUDY



134 FREEWAY AND LA RIVER DEVELOPMENT



WHITNILL HIGHWAY / GATEWAY TO WILD SPACE

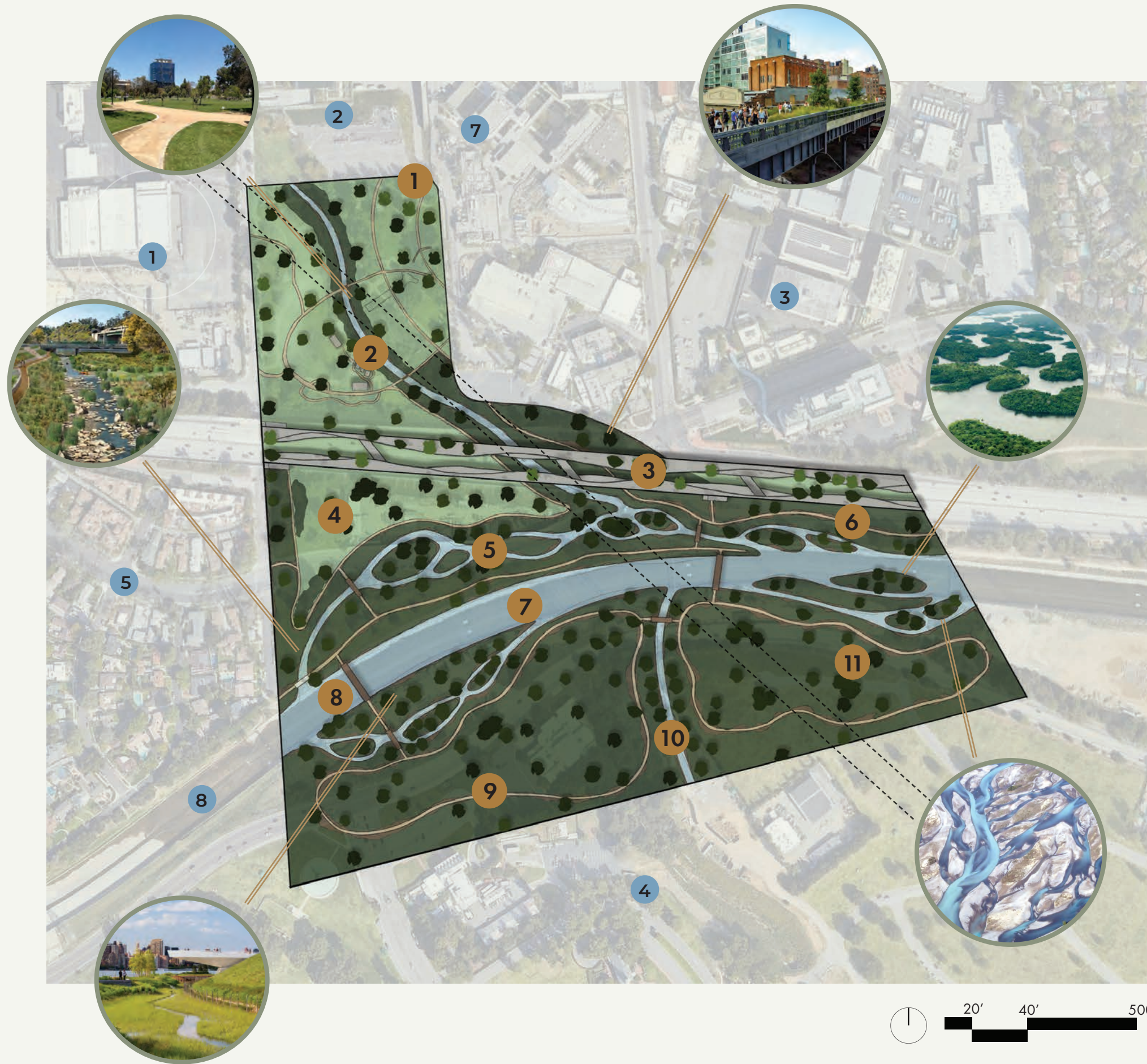


BUENA VISTA AND RIVERSIDE INTERSECTION DEVELOPMENT



CONNECTIONS AND LIMIT OF WORK IDEATION

ILLUSTRATIVE PLAN



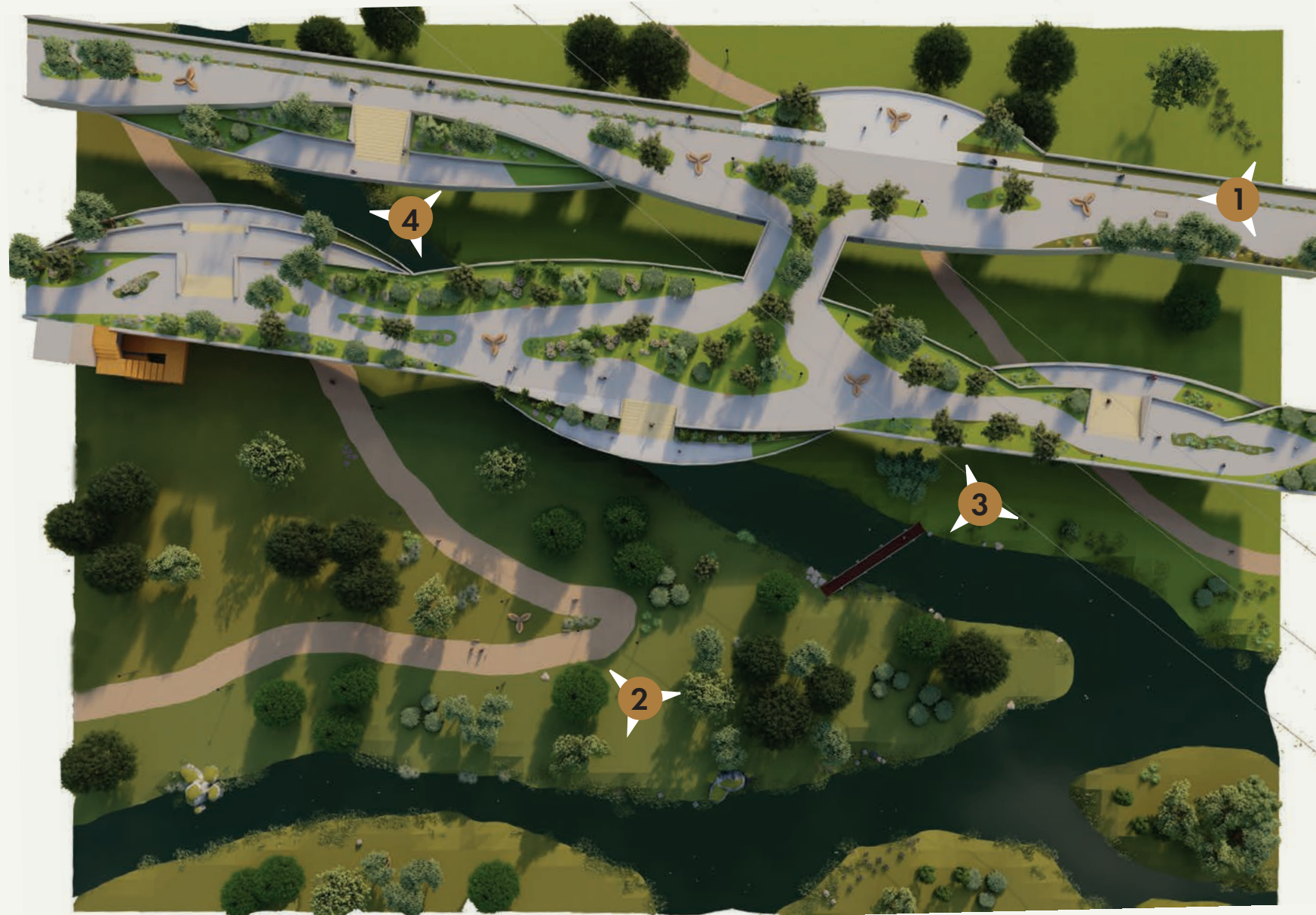
PROGRAM ELEMENTS

- 1 CONNECTION / ACCESS TO URBAN ELEMENTS
- 2 EXISTING JOHNNY CARSON PARK / TUJUNGA WASH
- 3 ELEVATED PARK / PEDESTRIAN TRANSIT
- 4 OPEN MEADOW / GATHERING AREA
- 5 BRAIDED TRIBUTARIES / WATER RETENTION
- 6 HORSE TRAIL
- 7 REWILDED / DECHALLENGED LA RIVER
- 8 PEDESTRIAN BRIDGE / GRIFFITH PARK ACCESS
- 9 PEDESTRIAN HIKING TRAILS
- 10 SENNET CREEK / RIPARIAN AREA
- 11 NATURALIZED FOREST LAWN ENTRANCE
- 12 ELEVATED OBSERVATION PLATFORMS
- 13 PROTECTED HABITAT ISLANDS

- 1 BURBANK STUDIOS
- 2 THE POINTE
- 3 DISNEY STUDIOS
- 4 FOREST LAWN
- 5 RESIDENTIAL
- 6 WARNER BROTHERS
- 7 SAINT JOSEPH HOSPITAL
- 8 LA RIVER



ENLARGEMENT



ISO VIEW FACING NORTH / WEST



DOUBLE LANE BIKE PATH FACING WEST

ENLARGEMENT AREA 750' x 575'



WALKING PATHS CONNETING TO JCP

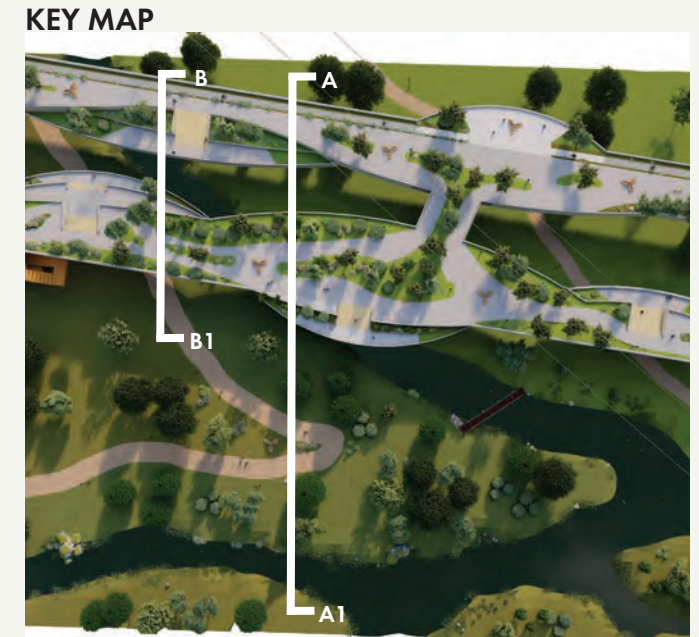


TUJUNGA WASH FLOWING SOUTH EAST



WALKING BRIDGE OVER TUJUNGA WASH

SECTION-PERSPECTIVES

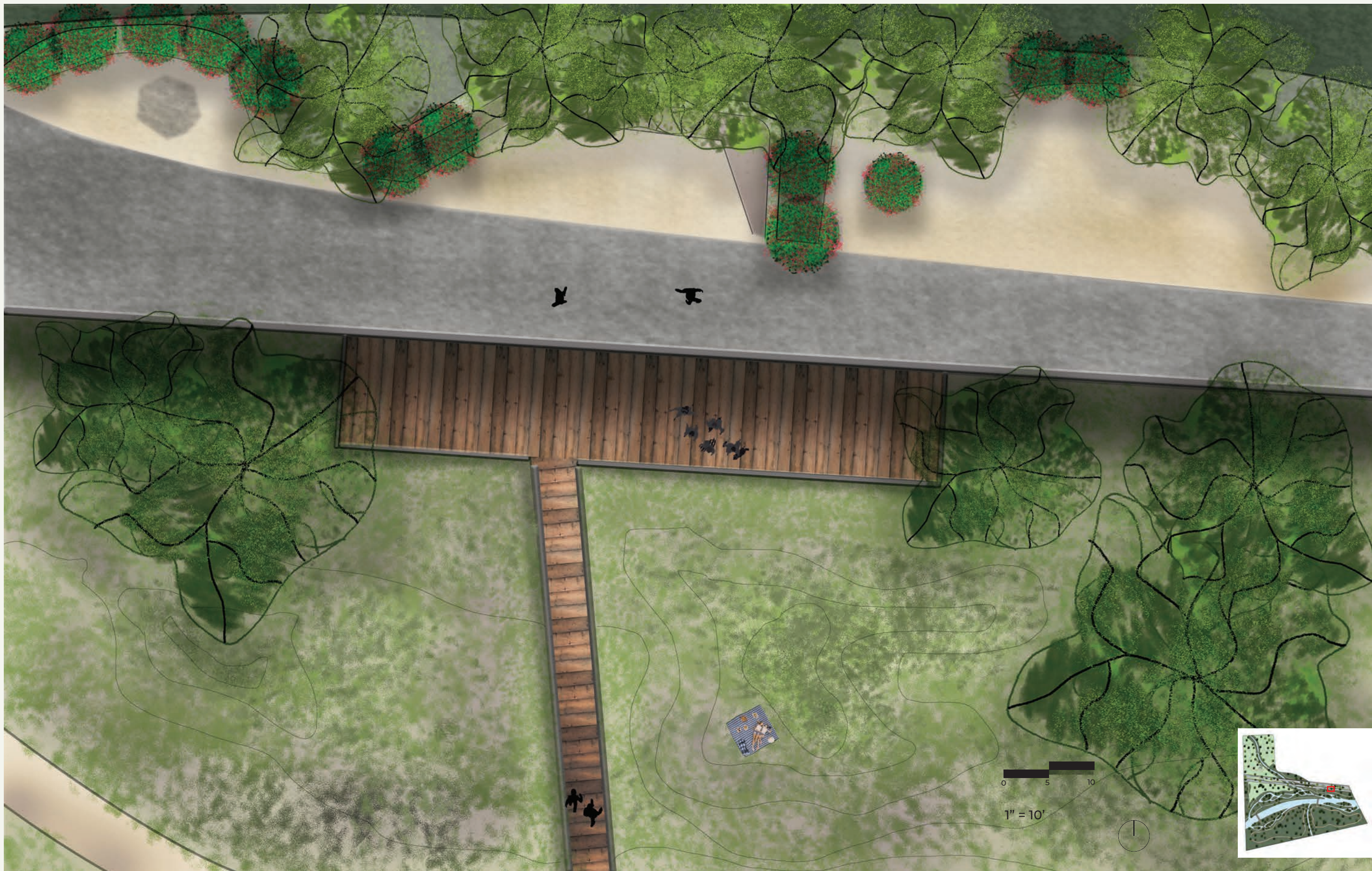


LOOKING EAST TO THE 134 CONNECTION BRIDGE

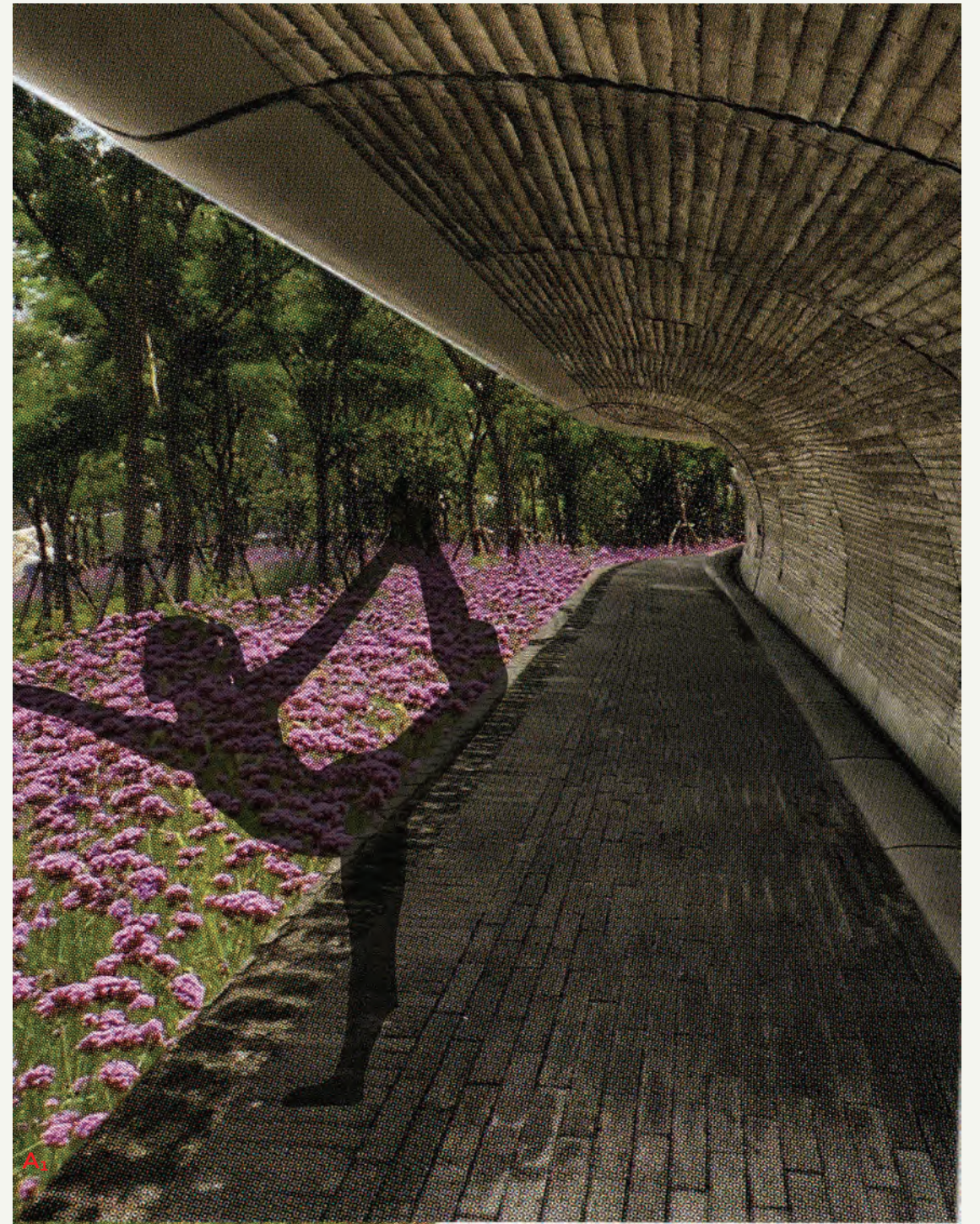
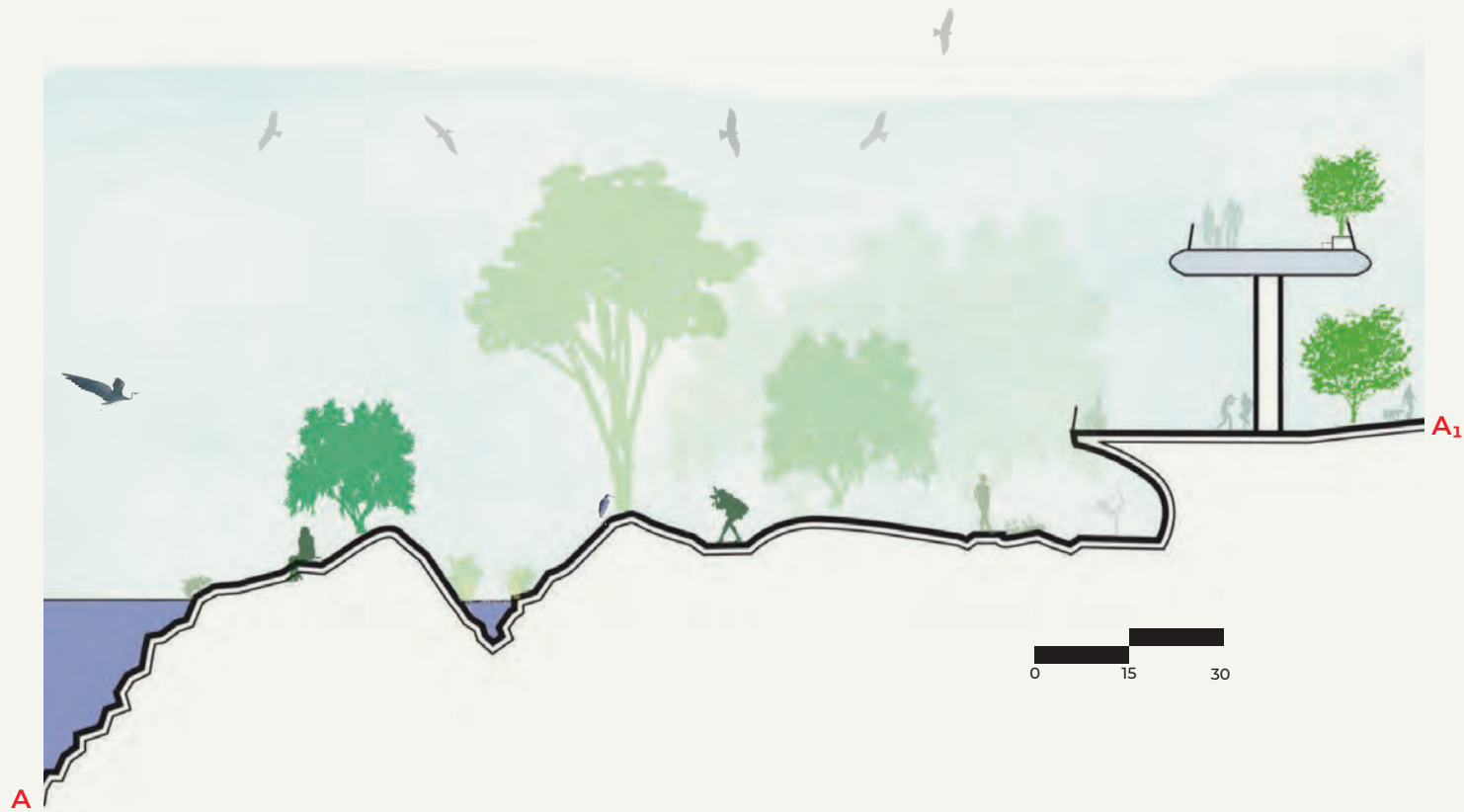


BRIDGE LOOKING WEST ACROSS 134 REDEVELOPMENT

ENLARGEMENT



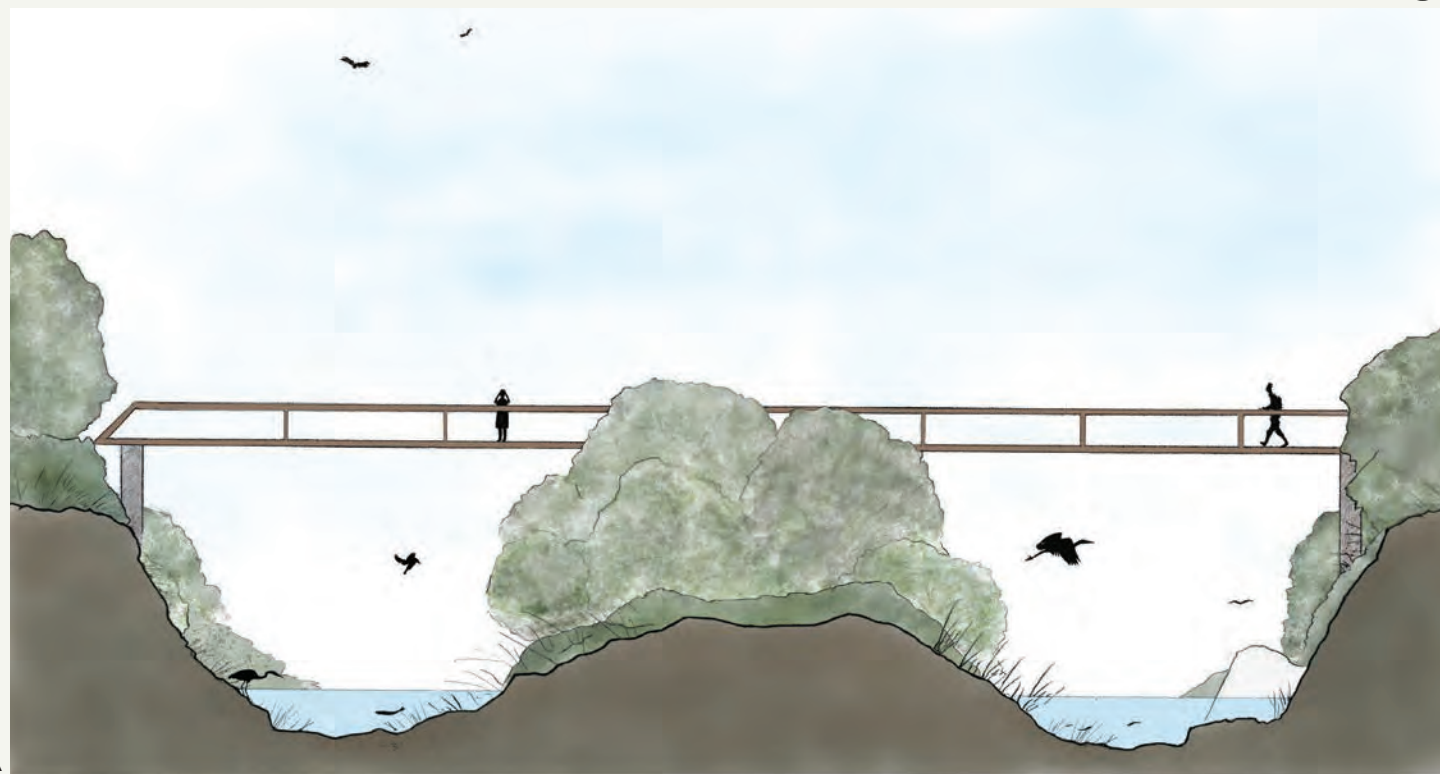
SECTION & PERSPECTIVE



ENLARGEMENT / SECTION / PERSPECTIVE

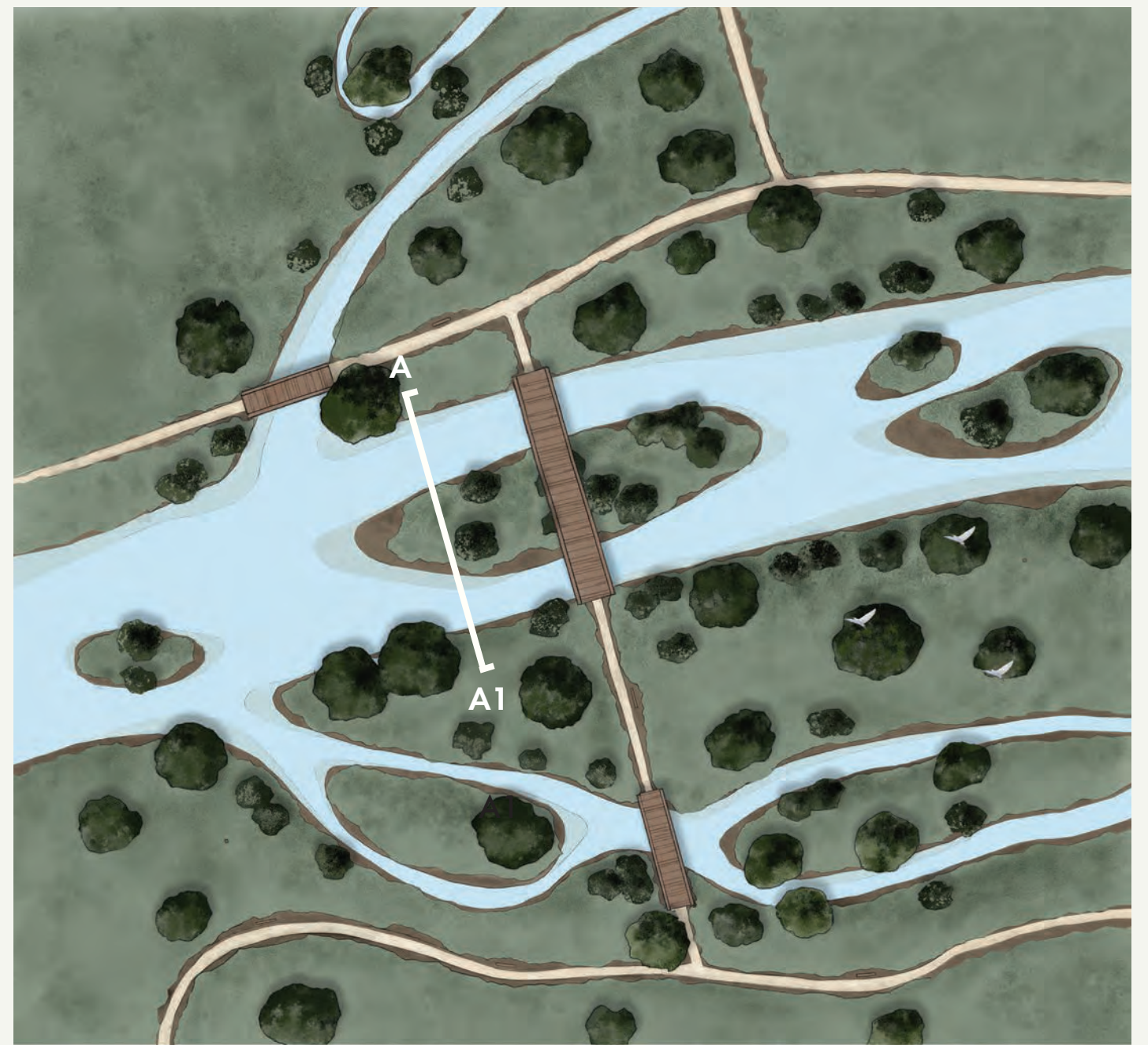


⌚



A
0' 10' 20' 30'

A1
⌚



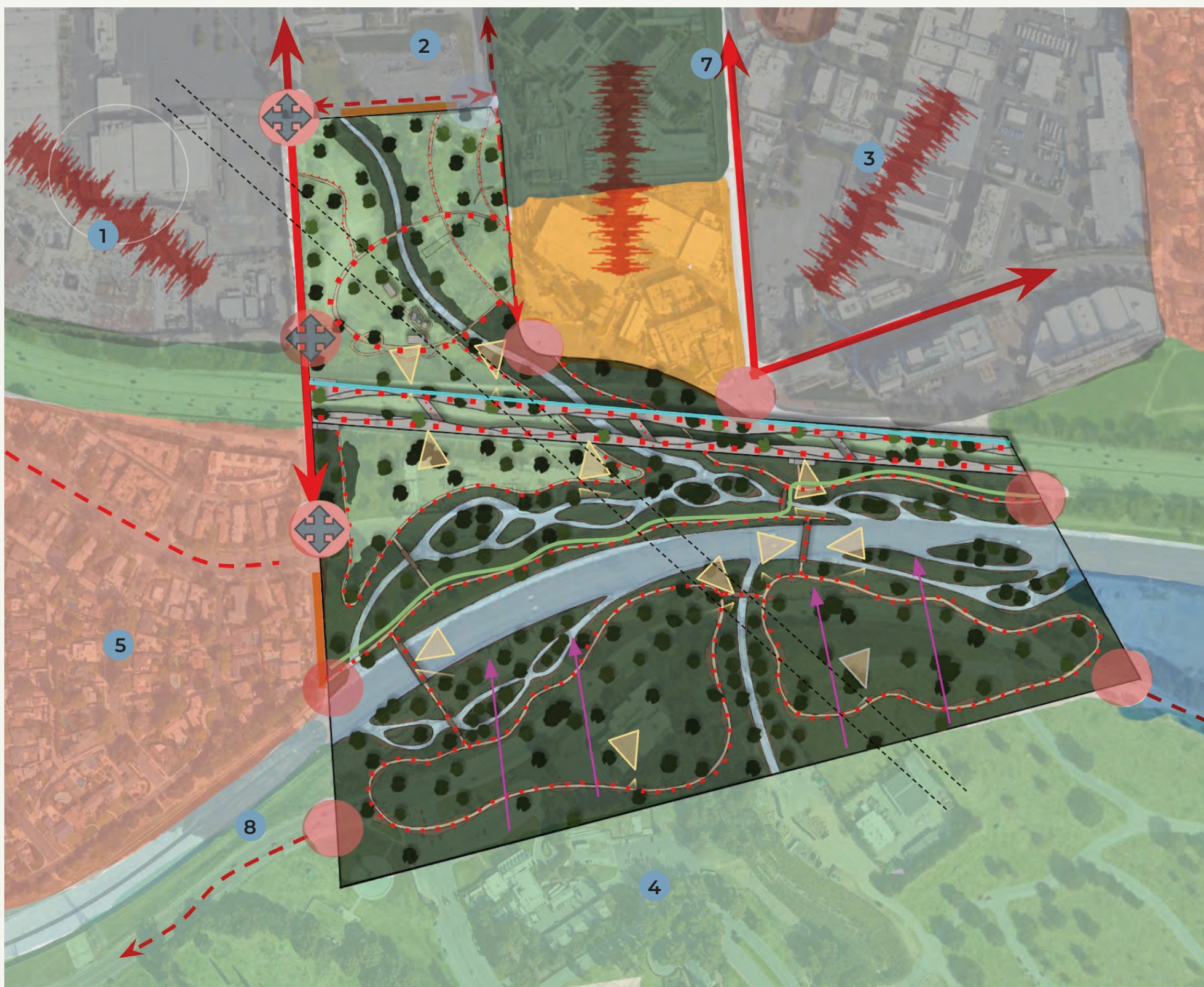
0' 120'

⌚



SITE ANALYSIS

KEY



- PRIMARY VEHICULAR CIRCULATION
- SECONDARY VEHICULAR CIRCULATION
- STREET PARKING
- PRIMARY PEDESTRIAN CIRCULATION
- SECONDARY PEDESTRIAN CIRCULATION
- INTERSECTION
- HORSE TRAIL
- WILD LIFE ACCESS TO RIVER
- BIKE PATH
- ACCESS POINTS
- VIEWS
- COMMERCIAL
- RESIDENTIAL
- PROVIDENCE HIGH SCHOOL
- GREEN SPACE
- MEDICAL
- INSTITUTIONAL
- HEADWORKS PROJECT

- 1** BURBANK STUDIOS
- 2** THE POINTE
- 3** DISNEY STUDIOS
- 4** FOREST LAWN
- 5** RESIDENTIAL
- 6** WARNER BROTHERS
- 7** SAINT JOSEPH HOSPITAL
- 8** LA RIVER





LANDSCAPE DESIGN 4 - EMILY GABEL-LUDDY
MICHAEL BIRCUMSHAW, AIMEE KIRBY, ANDREW STEIGER