



MACGOWAN HALL COURTYARD

ANN BUI
LANDSCAPE DESIGN 1 - FALL 2022
INSTRUCTOR: STEVEN CHAVEZ



SITE PHOTOS

EXTERIOR



Entrance into Macgowan Hall Courtyard



View outward toward sculpture garden blocked by shrub



Left of entrance: Grove of trees with wide path and benches where more pedestrians seem to congregate



Right of entrance: Water sounds from fountain

INTERIOR



South: View of main entrance from inside the courtyard



Metal scrim door with view looking up to centered square opening in ceiling



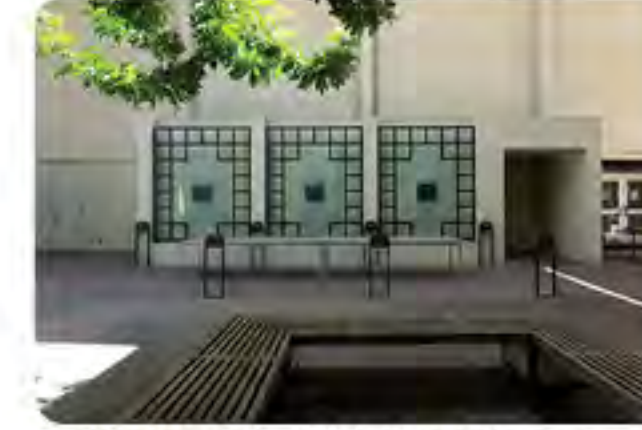
North: Access to restrooms and ticketbooth



Northwest corner: High point, slopes down towards drainage lines hugging planter beds



West: Entrance to The Little Theater and three primary trees leaning toward light



East: Entrance to Ralph Freud Playhouse and added vestibule and pathway lamps



Singular use of vestibule to block noise and light from theater, with ramp and stairs up.



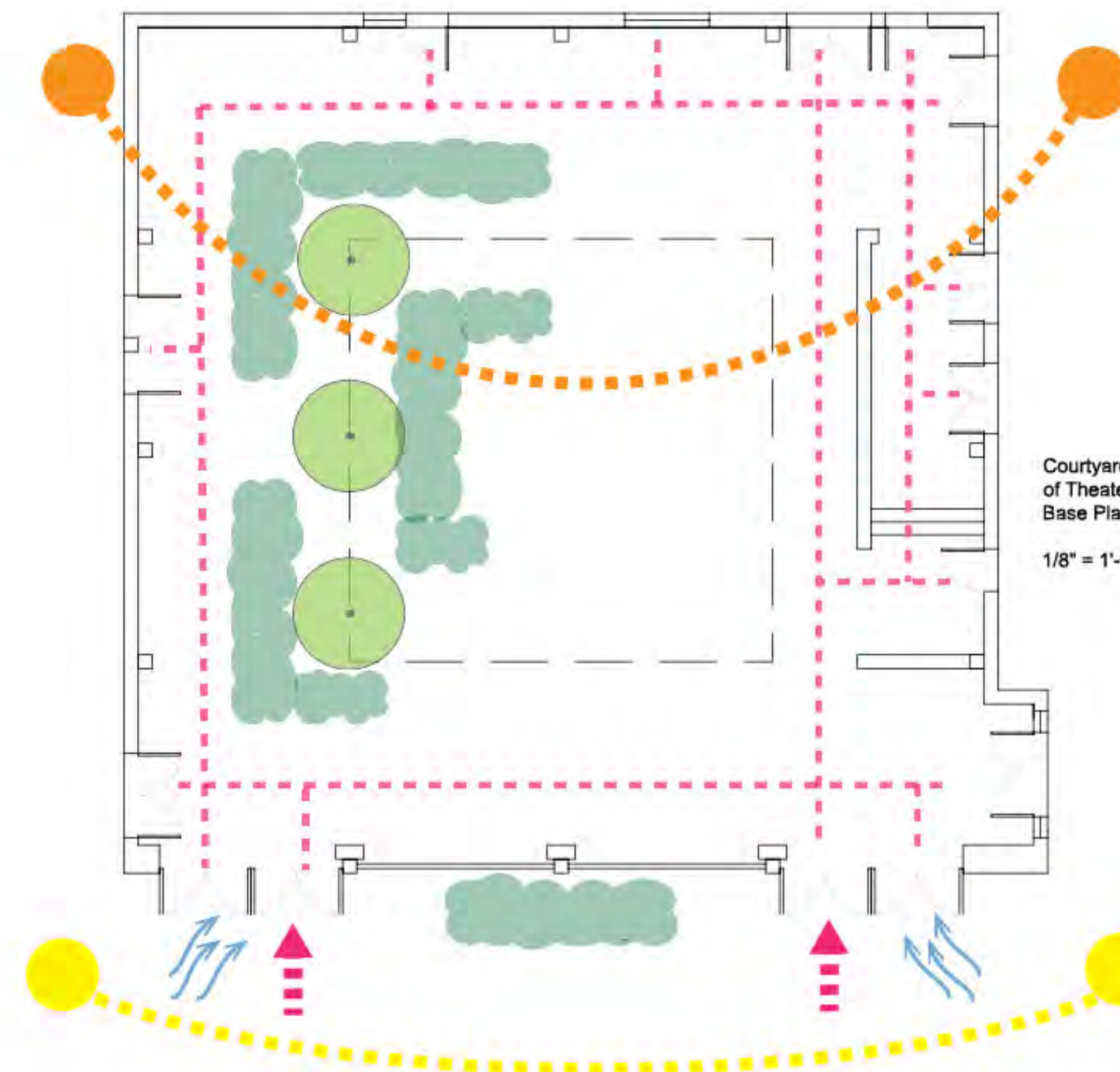
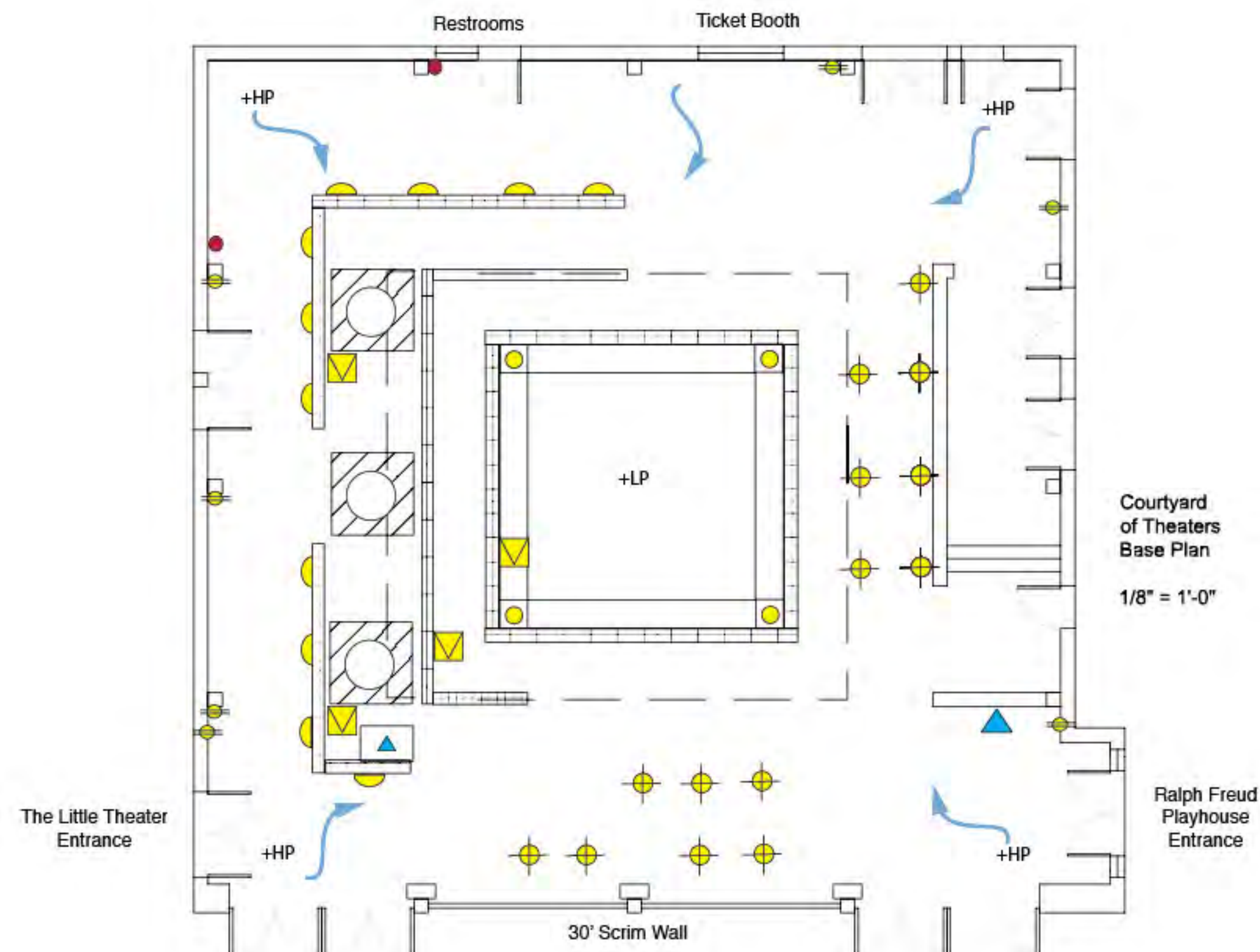
Center bench: Low point with drainage lines around circumference of bench

SITE INVENTORY

BUILT ELEMENTS LEGEND



NATURAL ELEMENTS LEGEND



STUDENT NAME: ANN BUI	
COURSE: LANDSCAPE DESIGN I	
INSTRUCTOR: STEVEN CHAVEZ	
SITE NAME AND ADDRESS: MACGOWAN HALL COURTYARD 245 CHARLES E. YOUNG DRIVE EAST LOS ANGELES, CA 90095	
DRAWING TITLE: SITE INVENTORY	
AERIAL IMAGE: 	
Notes: The courtyard is situated between the The Little Theater and the Ralph Freud Playhouse, and faces the Frank Murphy Sculpture Garden. Macgowan Hall was built between 1961-1963 for the Department of Theater Arts and named after the first department chair, Kenneth Macgowan. This space was renovated in the 1990s, removing the central sculpture, wall benches, flooring, and the color-blocked datum was repainted and muted to blend in with the remaining space. Glass fascade panels and geometric metal framework were added to the ticket booth and extended vestibule on the east wall. Courtyard dimensions: 60' x 60' x 30' Seating is limited to the centralized square bench and some moveable cafe chairs. Limited vegetation and the space has low activity and engagement with those who pass by.	
SCALE BAR: DRAWING SCALE: 1/8" = 1'-0"	
SHEET NUMBER: 2	SHEET NUMBER IN SET: 7

SITE CONSTRAINTS

1. LIMITED LIGHTING

- Primary light source through ceiling opening
- Scrim metal wall shields light coming in from south end
- Trees leaning and bending toward the light source

2. LIMITED SEATING

- Seating limited to centralized square bench and some moveable bistro chairs.
- Plantar beds do not have wide edges to allow comfortable seating

3. LIMITED VEGETATION

- There are only two species of plants: three large peppertrees and hedges of boxwood shrubs
- Low activity and engagement in the space by occupants and wildlife

4. LIMITED VIEWS

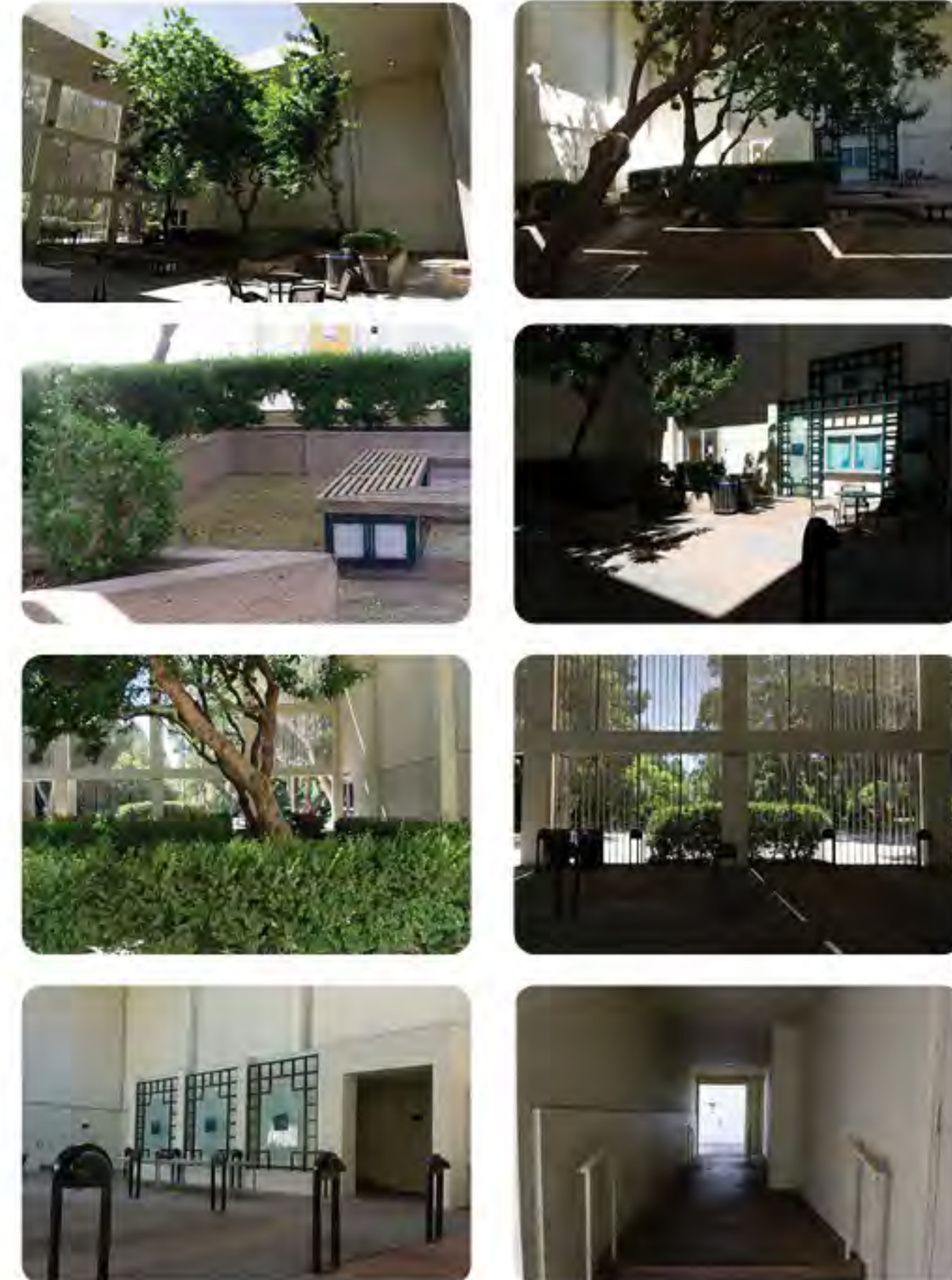
- The metal scrim wall limits views out to the Frank Murphy sculpture garden
- Courtyard is also hidden upon view from the exterior
- Low activity also limits casual people watching opportunities
- Unused vertical space

5. POSSIBLE PEDESTRIAN CONGESTION

- Three of four corners have multiple door openings
- Ticket booth located in the back and lines entering theater can block path

6. VESTIBULE

- Added vestibule acts as empty void when not in use for theater purposes
- Glass paneling and lighting appear dated and cold from 1990s renovation



SITE OPPORTUNITIES

1. ENTRANCE:

- Remove front shrub and shift entrance towards center to minimize congestion in corners and open views to sculpture garden.
- Consider removing front doors and door swings to keep entrance open and inviting, and allow more light to enter (option to use polycarbonate to play with light at night)

2. USE VERTICAL SPACE

- Add 2nd floor and create cover during the rain
- Add raised platform to vary floor heights
- Reduce congestion and increase capacity

3. MATCH VEGETATION TO LIGHT SOURCE

- Centralize vegetation below ceiling opening and capture rainwater
- Compose ikebana-like sculptural arrangement

4. ADDITIONAL SEATING

- Revisit original idea of placing bench seating along the edges
- Consider playing with color-blocking and blending ideas
- Create private and communal zones for moveable seating
- Add log/boulder for natural seating element
- Consider standing height ledge for drinks in front of cafe

5. ADD WATER AND SCULPTURE ELEMENT

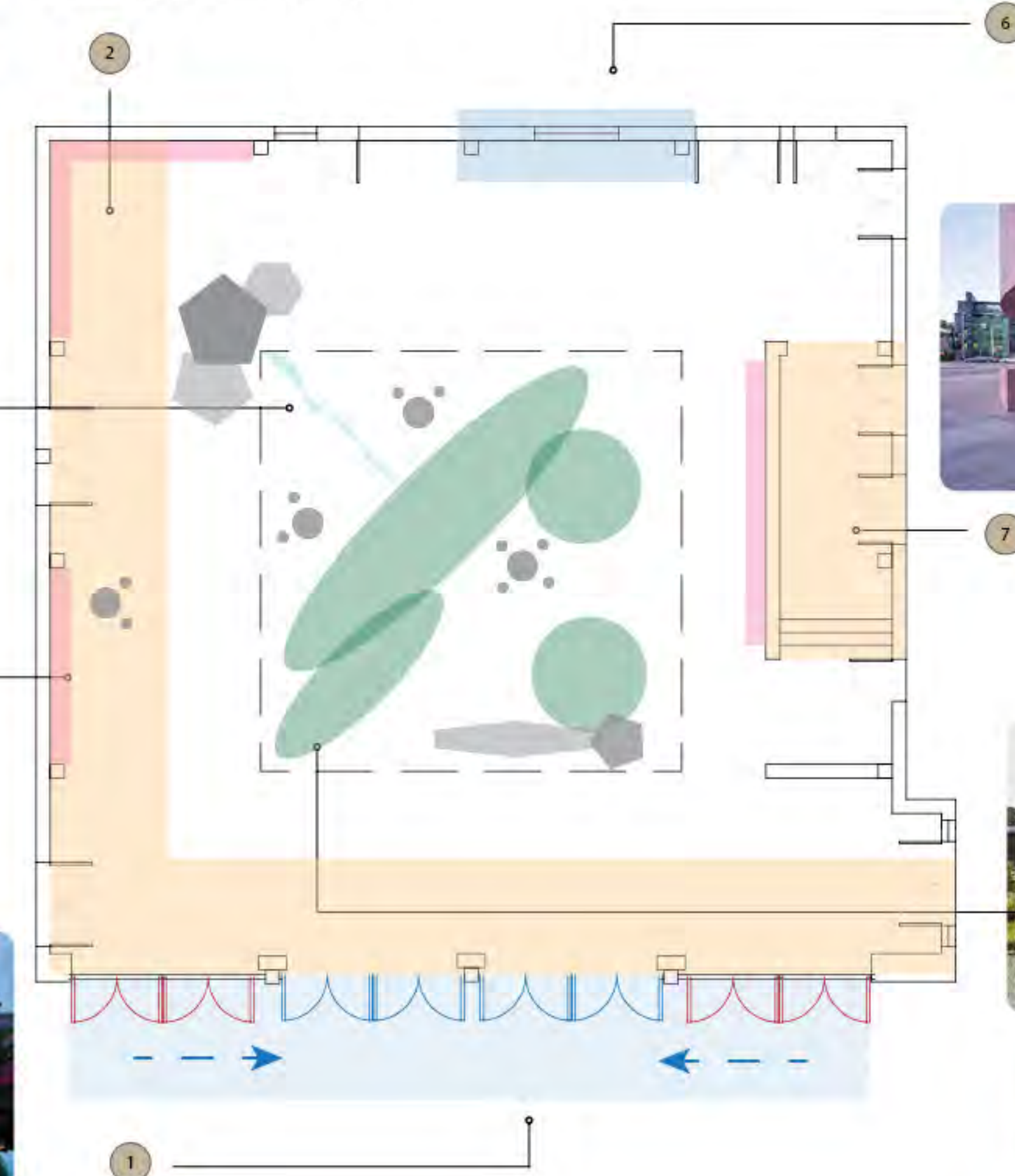
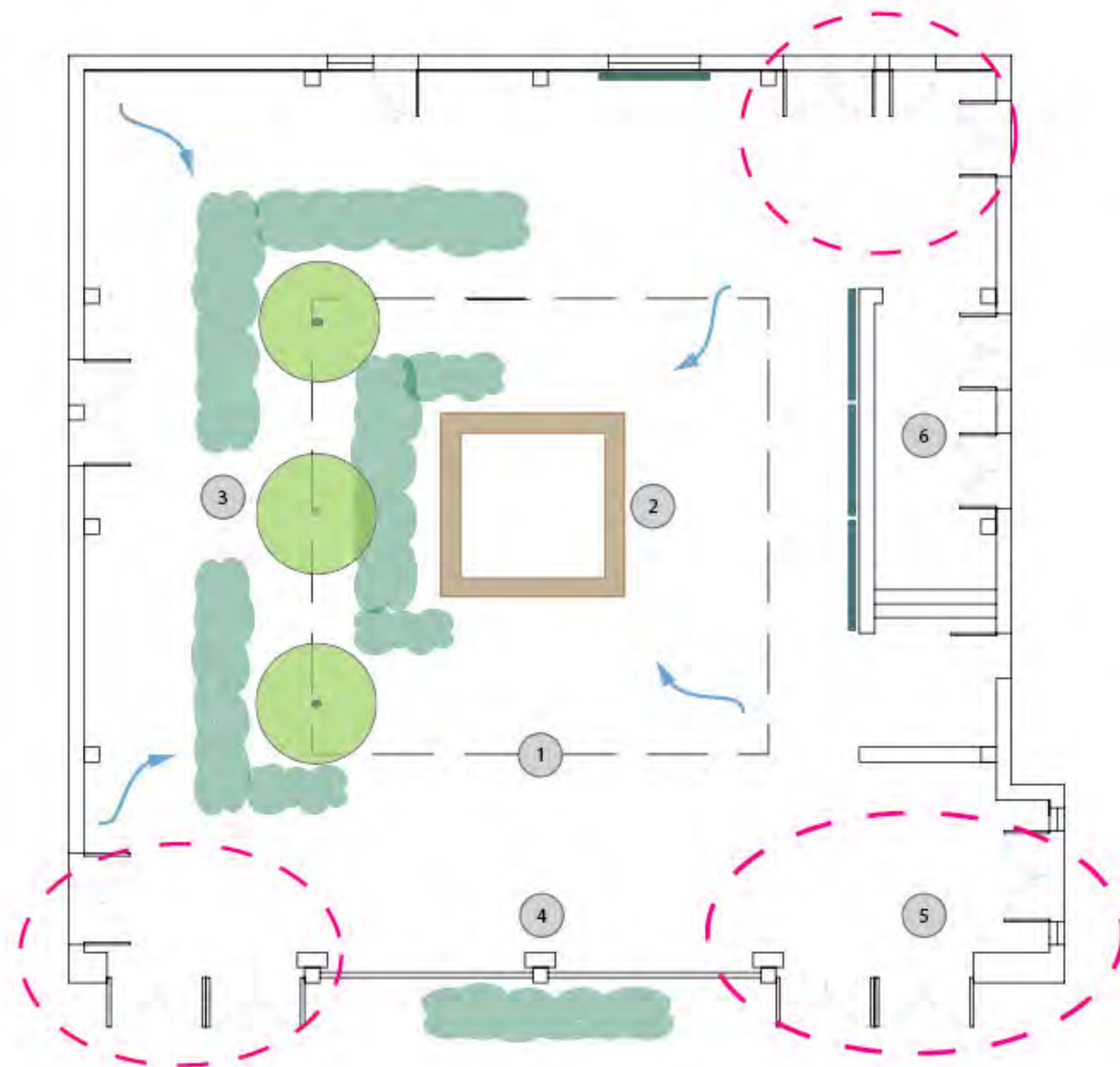
- Contrast outside fountain with gentle meditative carved boulder
- Runnel toward centered berm (Noguchi; Louis Kahn)



6. ACTIVATE SPACE WITH CAFE

- Replace Ticketbooth; tickets can use mobile bar scan or QR code
- Minimize need to walk 5-6 min to Lualle Commons, Northern Lights, and Cafe 451, with option to use for events.
- Useful for direct access to Frank Murphy Sculpture Garden and Coral Tree walk

7. ACTIVATE VESTIBULE WHEN NOT IN USE FOR THEATER

- Create spacial ambience to play with lights and auditory element (David Adjaye; James Turrell)



STUDENT NAME: ANN BUI	
COURSE: LANDSCAPE DESIGN I	
INSTRUCTOR: STEVEN CHAVEZ	
SITE NAME AND ADDRESS: MACGOWAN HALL COURTYARD 245 CHARLES E. YOUNG DRIVE EAST LOS ANGELES, CA 90085	
DRAWING TITLE: SITE ANALYSIS	
AERIAL IMAGE: 	
Notes: In the current state, the courtyard does not appear to be engaging enough to warrant passer byers to stay or be a destination people purposefully go to. The goal is to activate the space with more life and color, given that the building is part of the Department of Theater Arts. The courtyard should have an array of expressions, just as the original sculpture that was placed in the courtyard, and also tie in the transition from the sculpture garden. For this proposal, an idea to consider is duality, with a space that is fully useable both day and night, and each evoking a different personality or expression. During the day, it can be a calming space, with a gentle water fountain as part of a Noguchi-like rock or boulder sculpture, to contrast the rushing water fountain outside the courtyard. A runnel would connect it to the vegetation clustered in the center that is sculpted in an ikebana-like fashion, where the plants would capture light and rainwater from the ceiling opening. Would introduce more variety of plants with different colors, sizes, and textures. The vestibule could be activated with playful lights and atmospheric or nature sounds to provide a monastery like ambience. Private or communal spaces would be scattered throughout to provide options for seating. At night, the vestibule would be inactivated but the lights can shine through a polycarbonate facade to add more drama drawing visitors to the theater and playhouse. Ambient lighting can provide a space for guests to congregate before or after the show. The ticketbooth can also convert to a cafe during the day and possibly a mini bar in the evening for additional amenities. A second floor would optimize the vertical space and reduce congestion on the ground level while increasing capacity.	
SCALE BAR: 	
DRAWING SCALE: 1/8" = 1'-0"	
SHEET NUMBER: 3	SHEET NUMBER IN SET: 7

Concept 1: Sunken Amphitheater

This outdoor amphitheater is sandwiched between the two indoor theaters (The Little Theater and Ralph Freud Playhouse) offering an alternative space to enjoy the Southern California weather. It's a casual space that allows students to lounge, use for practice or rehearsal, or even host spoken word, open mic, monologues, small musical performances, etc. The enclosed acoustics allow sound to bounce and echo for such events. Planter beds are interspersed in between to liven up the space. Circulation and access to the building openings are along the circumference. A ledge can be added to the left side to serve as a counter for standing viewers. The center wall can serve as a projection screen and be a barrier to block the view of the restrooms.

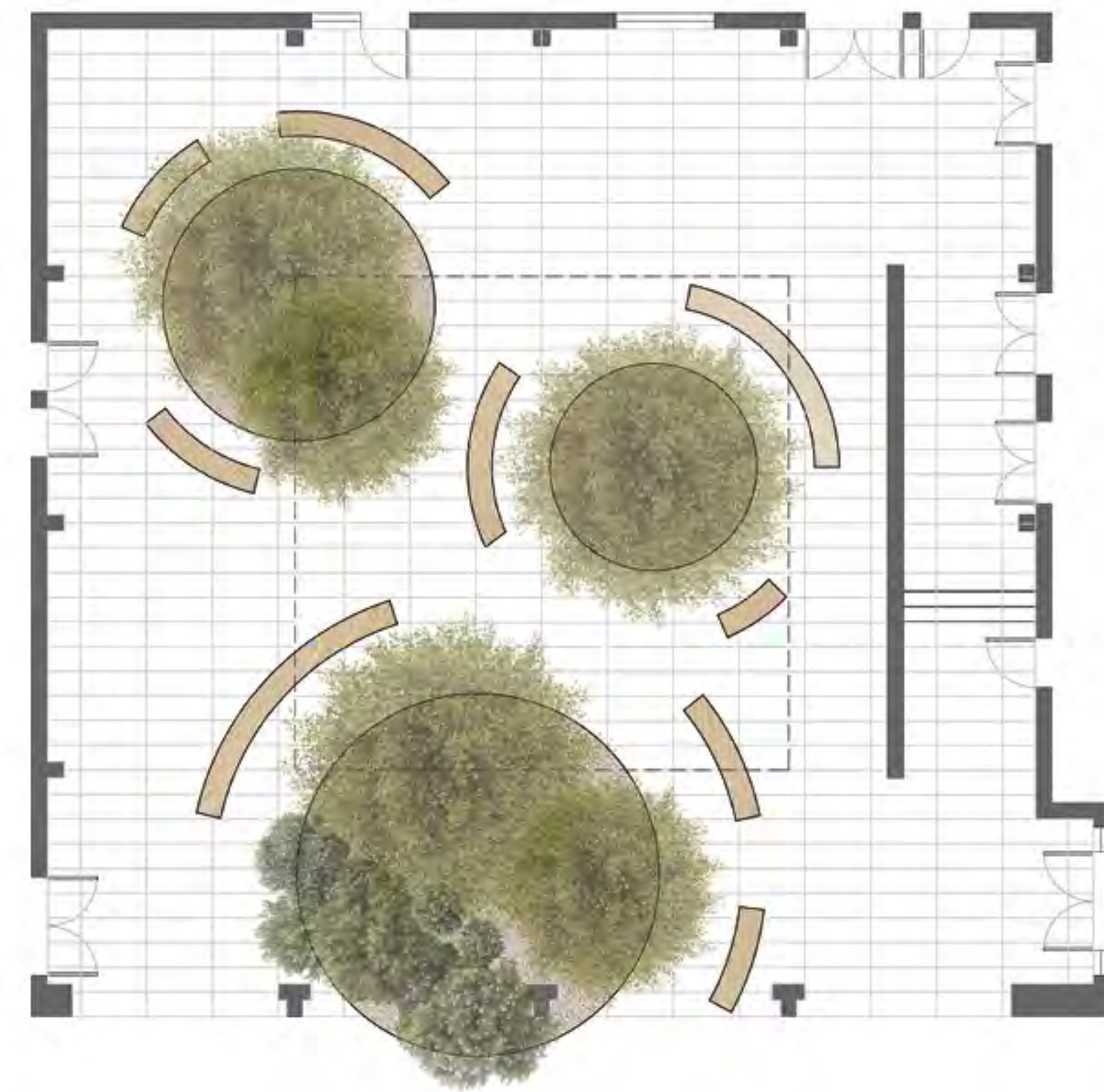
Concept 2: Rain Garden

This rain garden allows people and water to circulate around the planting area. Water from the three rain gardens is collected and funneled into a communal cistern. The pedestrian circulation is more circular or curved in nature and contrasts the surrounding rigid, cube structure of the existing courtyard. The lower metal scrim on the facade would be removed and allow the rain garden to blur the edging or transition into the courtyard. The idea is to also contrast from the openness of the neighboring Coral Tree Walk into a more compressed sanctuary.

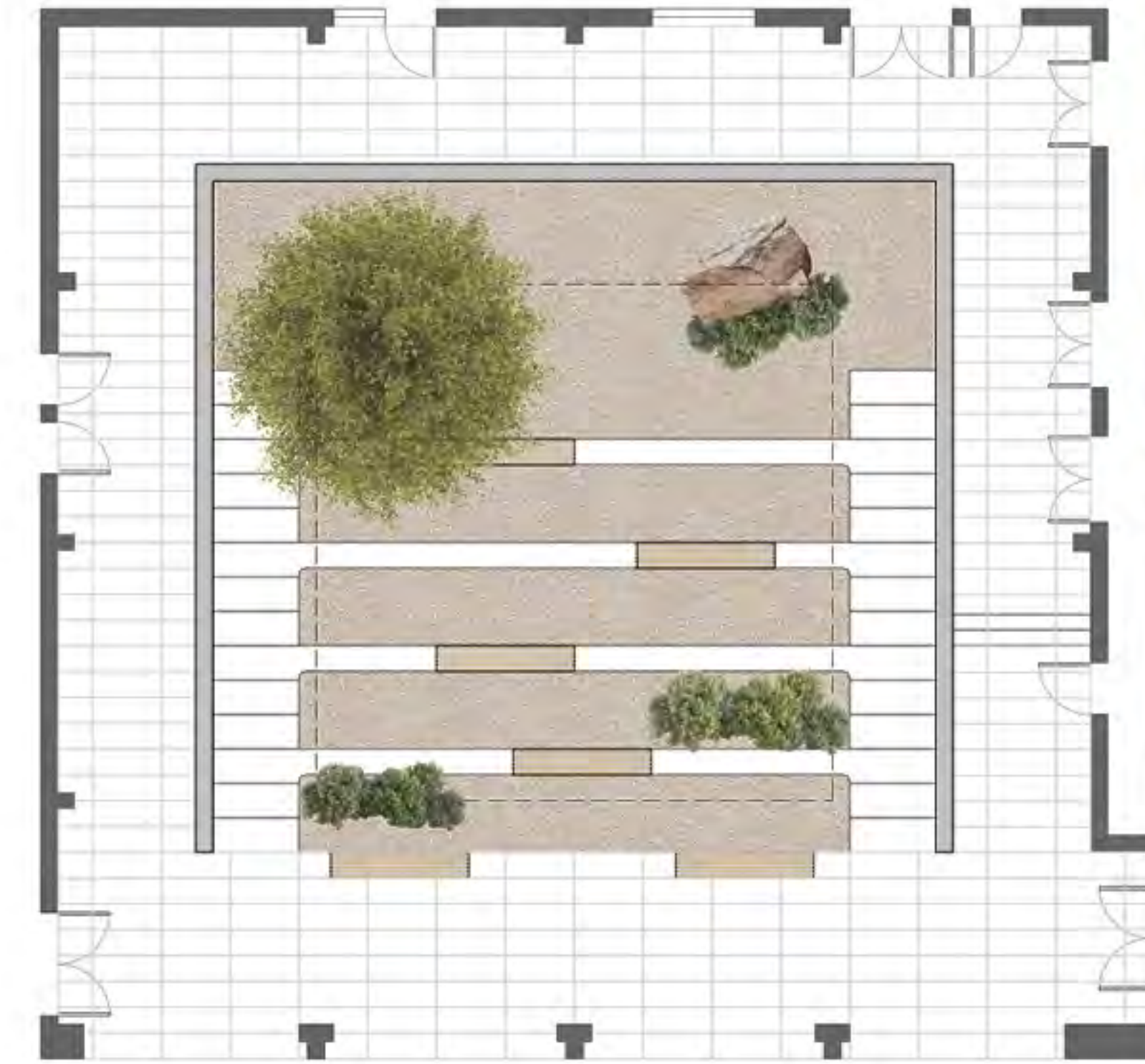
Concept 3: Reflecting Pond

This reflecting pond mirrors the square opening in ceiling of the courtyard. The black granite provides a hypnotizing, meditative space, in which the water would subtly trickle and drape over the edge into a gap that recirculates the water like a fountain. Within the pond could be planting areas for trees and shrubs to give the illusion of sitting in the water. A couple signature boulders could also peacefully rest in the pond to give a zen-like experience. Bench seating is facing inward towards the pond, which is more conducive for pairs or individuals to retain a quiet meditative, reflective experience. The moveable bistro tables and chairs offer another seating option to integrate and connect to the surrounding Franklin D. Murphy Sculpture Garden, fountain, and Coral Tree Walk in front of the courtyard.

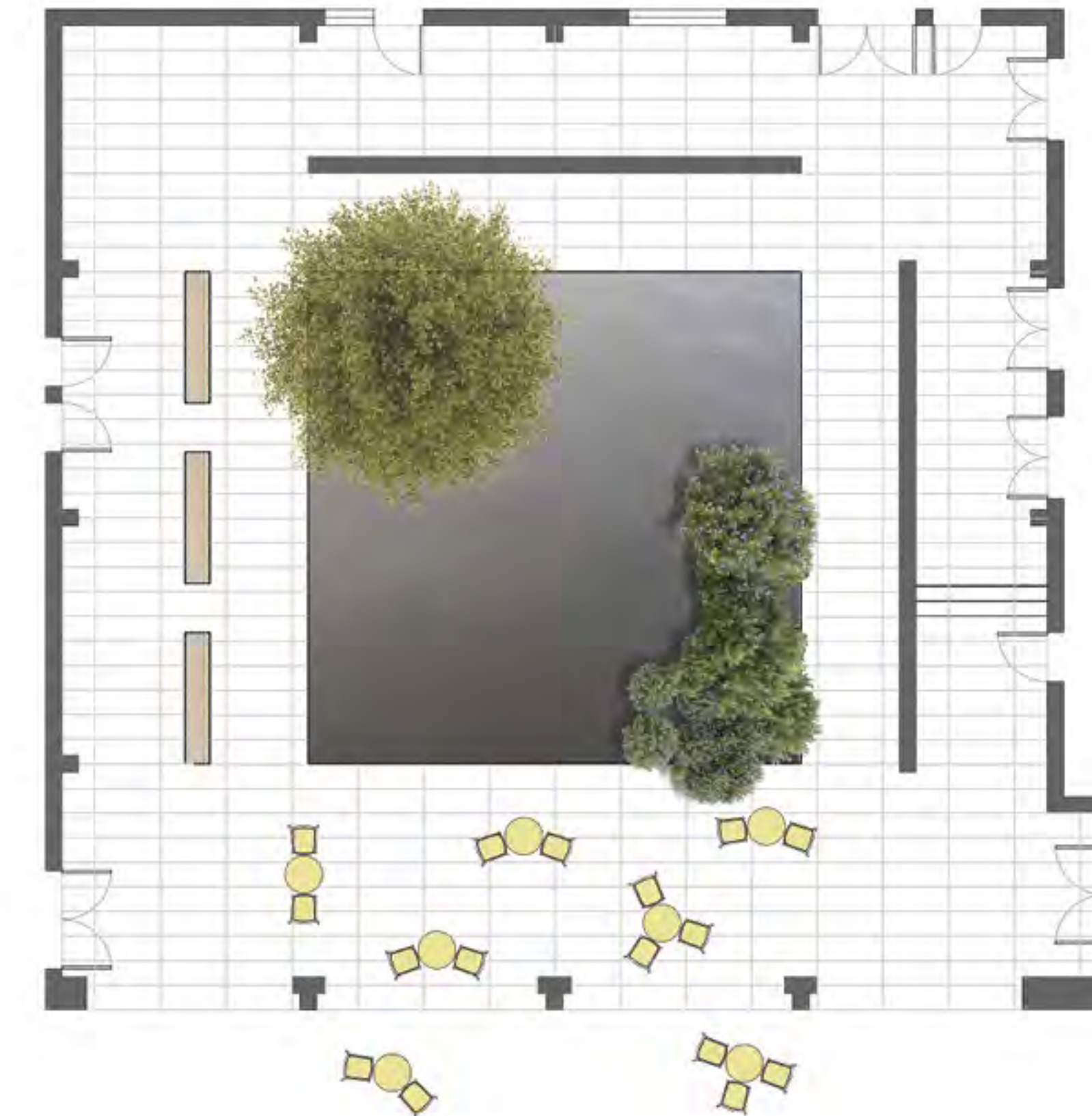
Concept 2: Rain Garden




Concept 1: Sunken Amphitheater



Concept 3: Reflecting Pond



STUDENT NAME: ANN BUI	
COURSE: LANDSCAPE DESIGN I	
INSTRUCTOR: STEVEN CHAVEZ	
SITE NAME AND ADDRESS: MACGOWAN HALL COURTYARD 245 CHARLES E. YOUNG DRIVE EAST LOS ANGELES, CA 90095	
DRAWING TITLE: THREE DESIGN ALTERNATIVES	
AERIAL IMAGE: 	
Notes:	
	
SCALE (BW):	
DRAWING SCALE: 1/8" = 1'-0"	
SHEET NUMBER: 4	SHEET NUMBER IN SET: 7

Courtyard Pond Theater

The final site plan incorporates two of the three prior concepts of a pond and a sunken amphitheater. The vestibule was an added feature during the 1990s remodel, which ultimately breaks up the former symmetry in the courtyard. In this design, it becomes the center focus. While the vestibule maintains its functional role in blocking light and sound from the indoor playhouse, by extruding it up, it extends and acknowledges the tall height of the courtyard. While one side is dark and tunnel-like, the other side projects light and is open to the rest of the courtyard. It can showcase abstract digital film or art, and it can even serve as a projection screen to display film or former performances.

The entrance to the sunken amphitheater starts on the west side of the courtyard and gradually steps down 6" a few times so that later there is 18" seating height in the section next to the pond that gently ripples. The water feature adds some tranquility to the courtyard and reflects light projected from the screen. Logs of bench seating is added within the sunken amphitheater that can be leaned upon while viewing the projection screen, or even lied upon to look up at the ceiling opening. When it rains, water can trickle down into the pond. Additional bench seating added on the west side of the courtyard, and moveable chairs are slid under a long table counter on the north end. The former ticketbooth serves as a cafe kiosk to serve snacks and refreshments.

Lastly, a surface treatment will be added to the lower section of the theater with a series of wooden slats to disguise some of the doors and make the courtyard appear more seamless. Another wall layer will be added and slightly protruding from the main wall, starting at the former door-height datum and going upward to the ceiling. The upper two-thirds would be plastered walls with molded curved corners to soften the geometry and highlight and contrast the square opening in the ceiling. Vegetation and greenery will be added to further soften and warm up the space, while trying to minimize obstruction of the projection screen that was the main focus of the concept.

Updated note: Vegetation is concentrated along the northend table to match the sun path from the ceiling opening. A large boulder also would be added near the south entrance where the courtyard steps down for safety purposes.

LEGEND

- 1 Projection Screen
- 2 Pond
- 3 Sunken Amphitheater
- 4 Cafe
- 5 Added upper wall layer with rounded corners and cove lighting underneath and datum at door height (dashed outline)




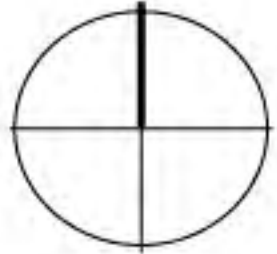
Section A



Section B



STUDENT NAME: ANN BUI	
COURSE: LANDSCAPE DESIGN I	
INSTRUCTOR: STEVEN CHAVEZ	
SITE NAME AND ADDRESS: MACGOWAN HALL COURTYARD 245 CHARLES E. YOUNG DRIVE EAST LOS ANGELES, CA 90095	
DRAWING TITLE: FINAL SITE PLAN	
AERIAL IMAGE: 	
Notes:	
SCALE BAR:	
DRAWING SCALE: 1/4" = 1'-0"	
SHEET NUMBER: 5	SHEET NUMBER IN SET: 7

STUDENT NAME: ANN BUI	
COURSE: LANDSCAPE DESIGN I	
INSTRUCTOR: STEVEN CHAVEZ	
SITE NAME AND ADDRESS: MACGOWAN HALL COURTYARD 245 CHARLES E. YOUNG DRIVE EAST LOS ANGELES, CA 90095	
DRAWING TITLE: SECTION ELEVATIONS AND PERSPECTIVE SKETCH	
AERIAL IMAGE: 	
Notes: CONTEMPLATIVE COURTYARD THEATER Section A-A' - Facing North Section B-B' - Facing East	
SCALE BAR: 	
DRAWING SCALE: 1/4" = 1'-0"	
SHEET NUMBER: 6	SHEET NUMBER IN SET: 7



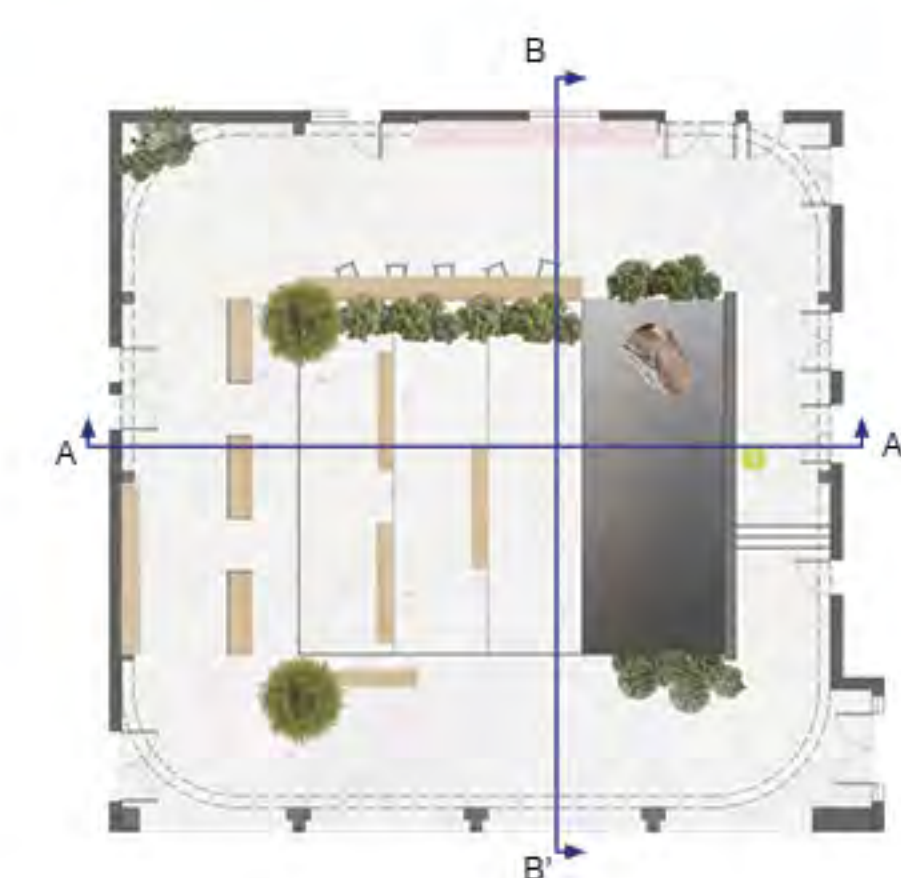
SECTION ELEVATION A



PERSPECTIVE SKETCH



SECTION ELEVATION B



PLAN




STUDENT NAME:
ANN BUI

COURSE:
LANDSCAPE DESIGN I

INSTRUCTOR:
STEVEN CHAVEZ

SITE NAME AND ADDRESS:
MACGOWAN HALL COURTYARD
245 CHARLES E. YOUNG DRIVE EAST
LOS ANGELES, CA 90095


DRAWING TITLE:
DIGITAL MODEL

AERIAL IMAGE:


Notes:
Digital model created using Rhino and Enscape.

Images from Left to Right, Top to Bottom.

1. Facade with polycarbonate to allow light to penetrate through.
2. Facade (evening)
3. Sunken steps facing north (evening). Steps 6" down every 8 feet from west to east until pond is reached.
4. Facing east, view of projection screen, image dimensions can be adjusted. Square opening in ceiling unchanged.
5. Sunken steps facing south.
6. Sunken steps facing north. More vegetation placed in sunlight path. Cafe replaces former ticket booth.
7. Entrance to courtyard, facing north. Sunken steps next to pond allow 18" seating.
8. Northwest corner (early day). Staggered wide, wooden benches throughout space. Can also act as back rest if seating on floor. Additional moveable table height seating close to cafe kiosk.
9. Northwest corner (late afternoon)
10. Southeast corner - view of modified vestibule as walkway on onside and projection screen on other side.
11. View from front of cafe facing west. Vegetation in corner. Metal piping for rain water. Furred out walls cover vertical building posts add depth and place for sove lighting, with neutral plastered walls to add warmth and texture. Wood slats added as surface treatment to disguise doors and reestablish former datum in original design.
12. Northeast corner facing south. Interior of extruded vestibule as walkway.

SCALE BAR:


DRAWING SCALE:
1/4" = 1'-0"

SHEET NUMBER: 7 SHEET NUMBER IN SET: 7