
+
•
◦

CENTRAL COAST ELEMENTARY

ALINE GREGORIO, ARCH X 472, Summer 2023

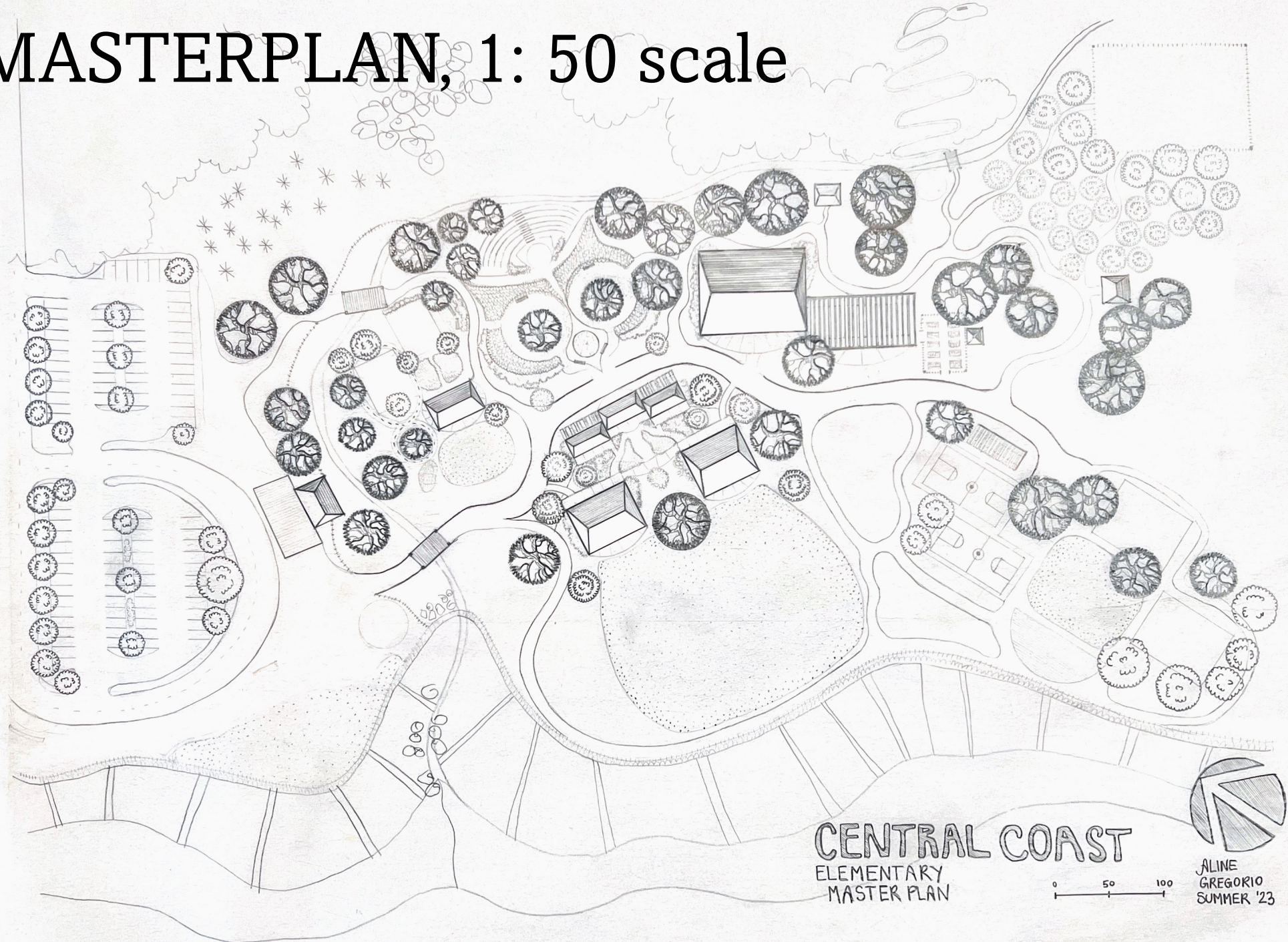
Design concept: “*genius loci*”

Celebrate the genius of place,
rooted in what is local and endemic:

- Heritage oak trees (plus new plantings) as focal points
- Axial orientations towards unobstructed ocean views
- California floristic province, education and restoration
- Boulders & swell
- Nature exploration through natural and sensory playgrounds and hiking trails
- Community spaces
- Sustainability: low irrigation, solar panels, natural lines and materials like permeable hemp concrete, decomposed granite



MASTERPLAN, 1: 50 scale



CENTRAL COAST
ELEMENTARY
MASTER PLAN

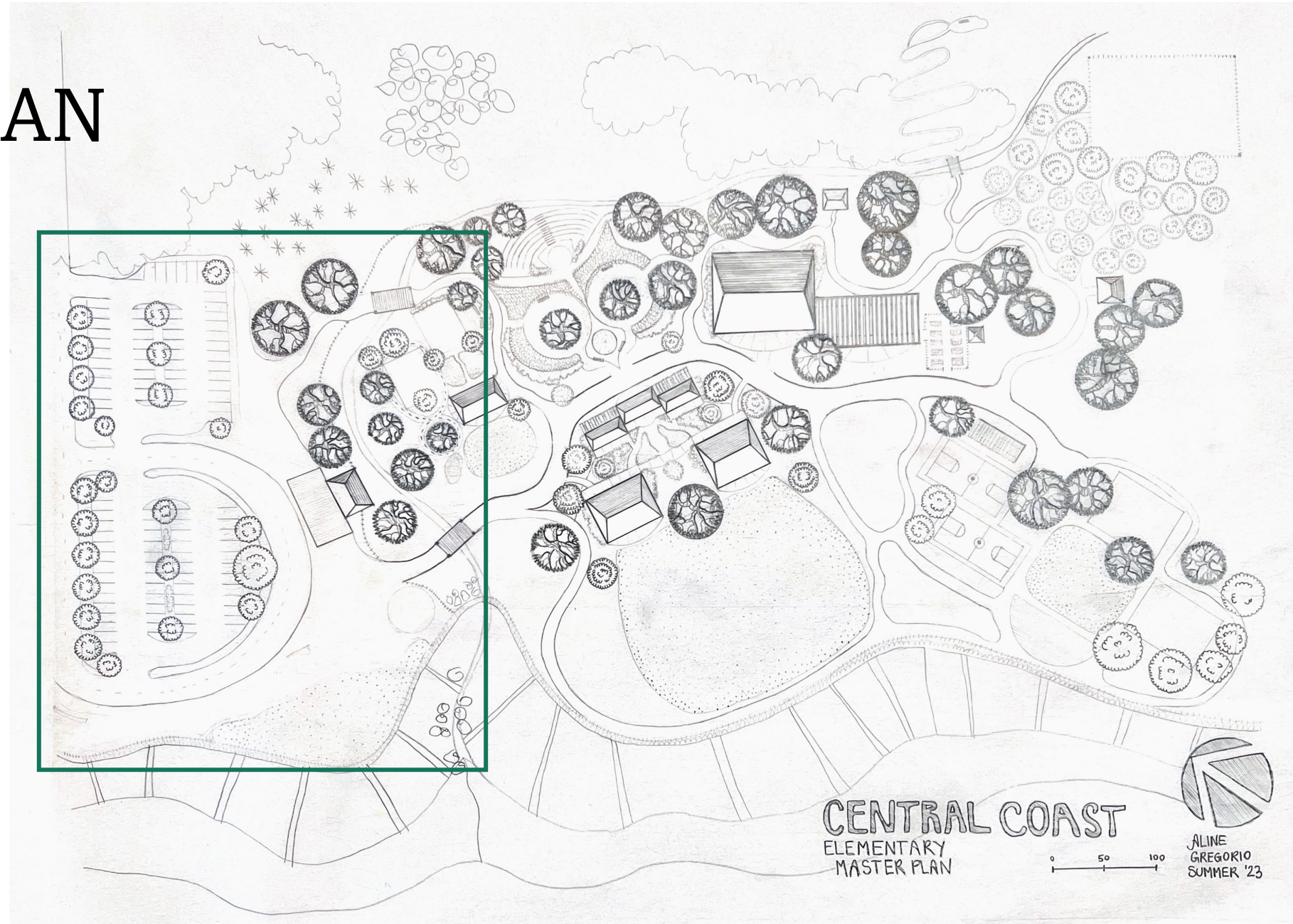
0 50 100

ALINE
GREGORIO
SUMMER '23

MASTERPLAN

ENTRANCE

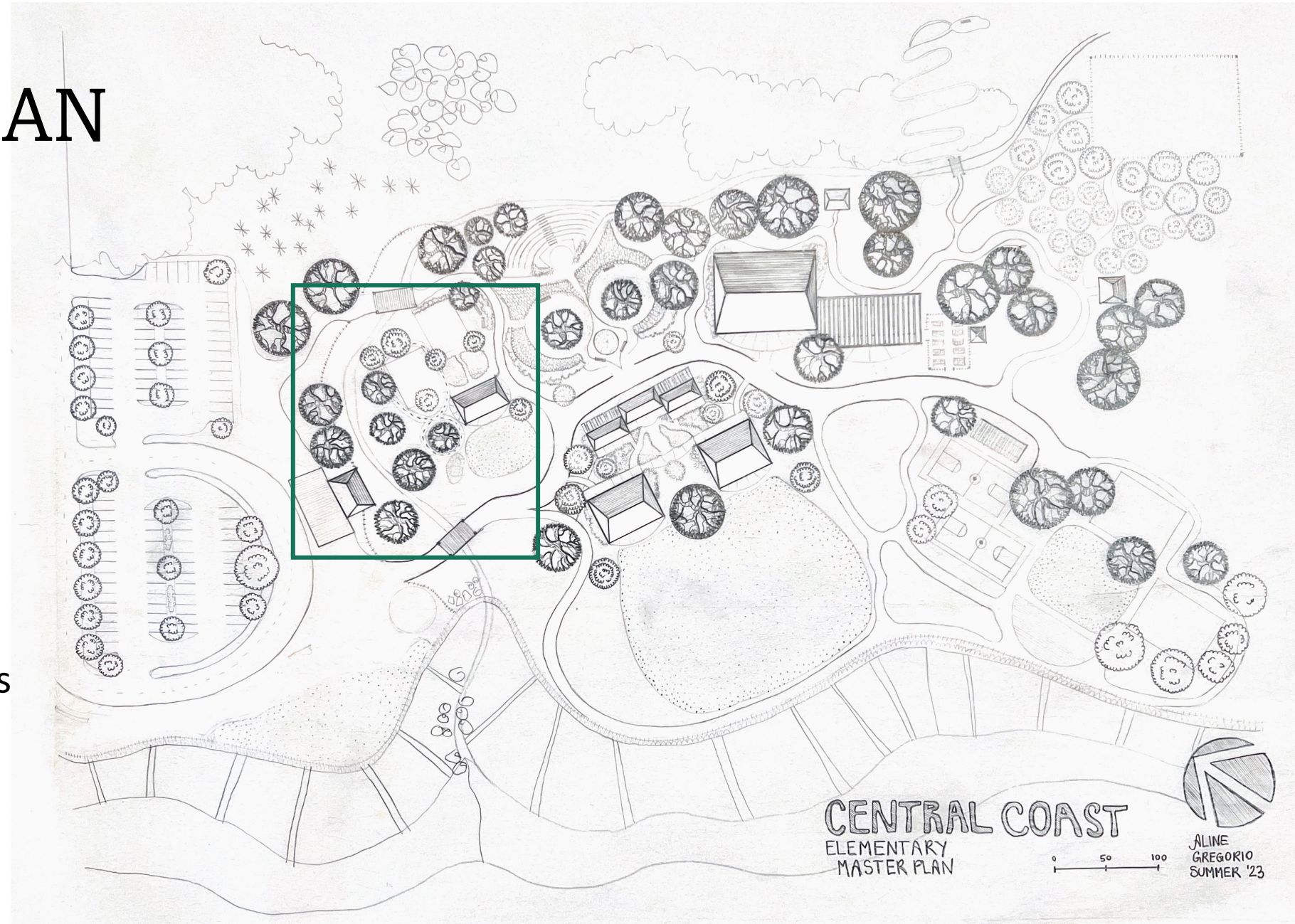
- Turn about parking
- Front office
- Shade structure
- Ocean view community lawn & beach access



MASTERPLAN

KINDER

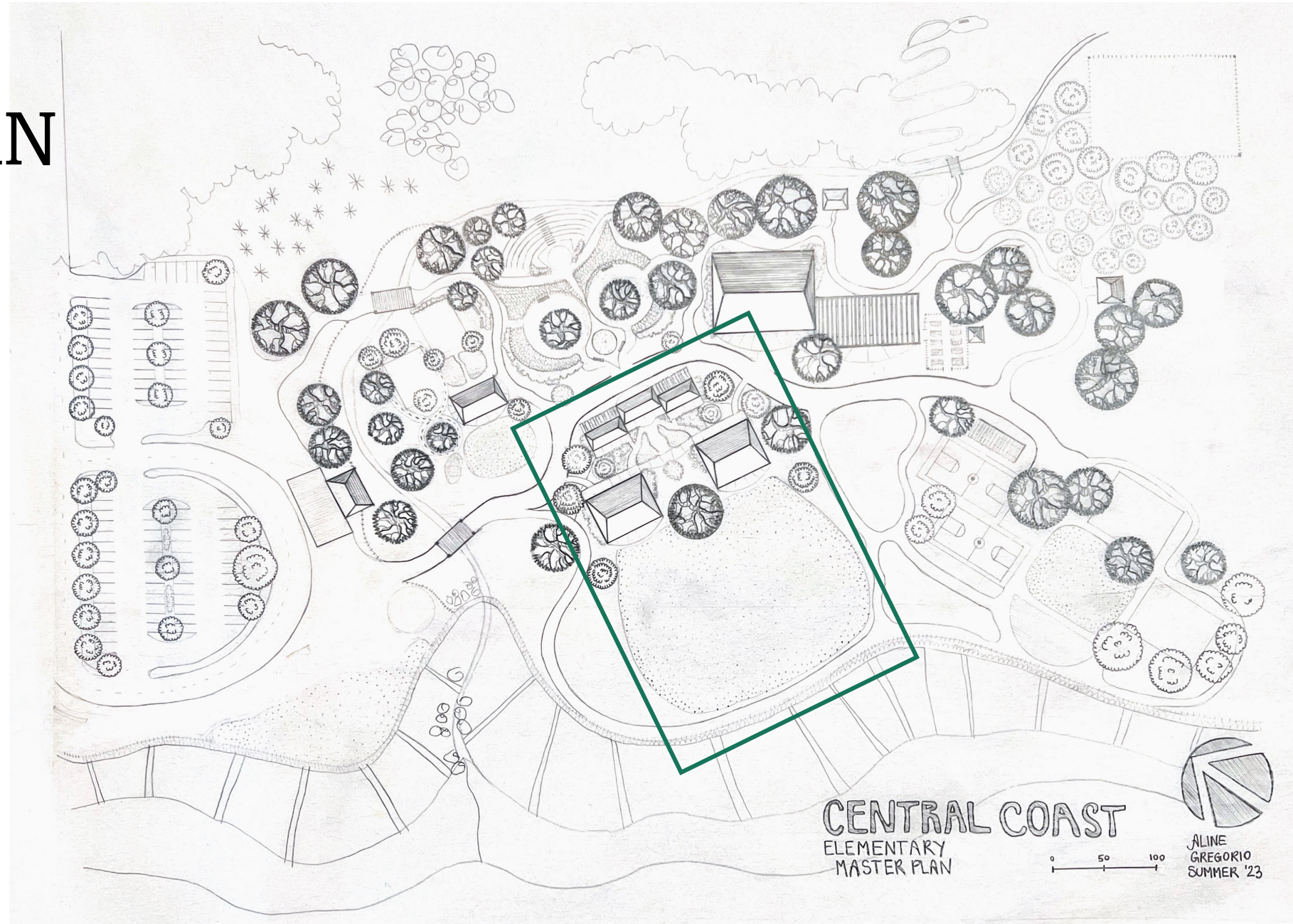
- Kinder ocean view enclosed front lawn
- Tree platform
- Back topo lawn
- play areas
- Native garden access



MASTERPLAN

ACADEMIC AXIS

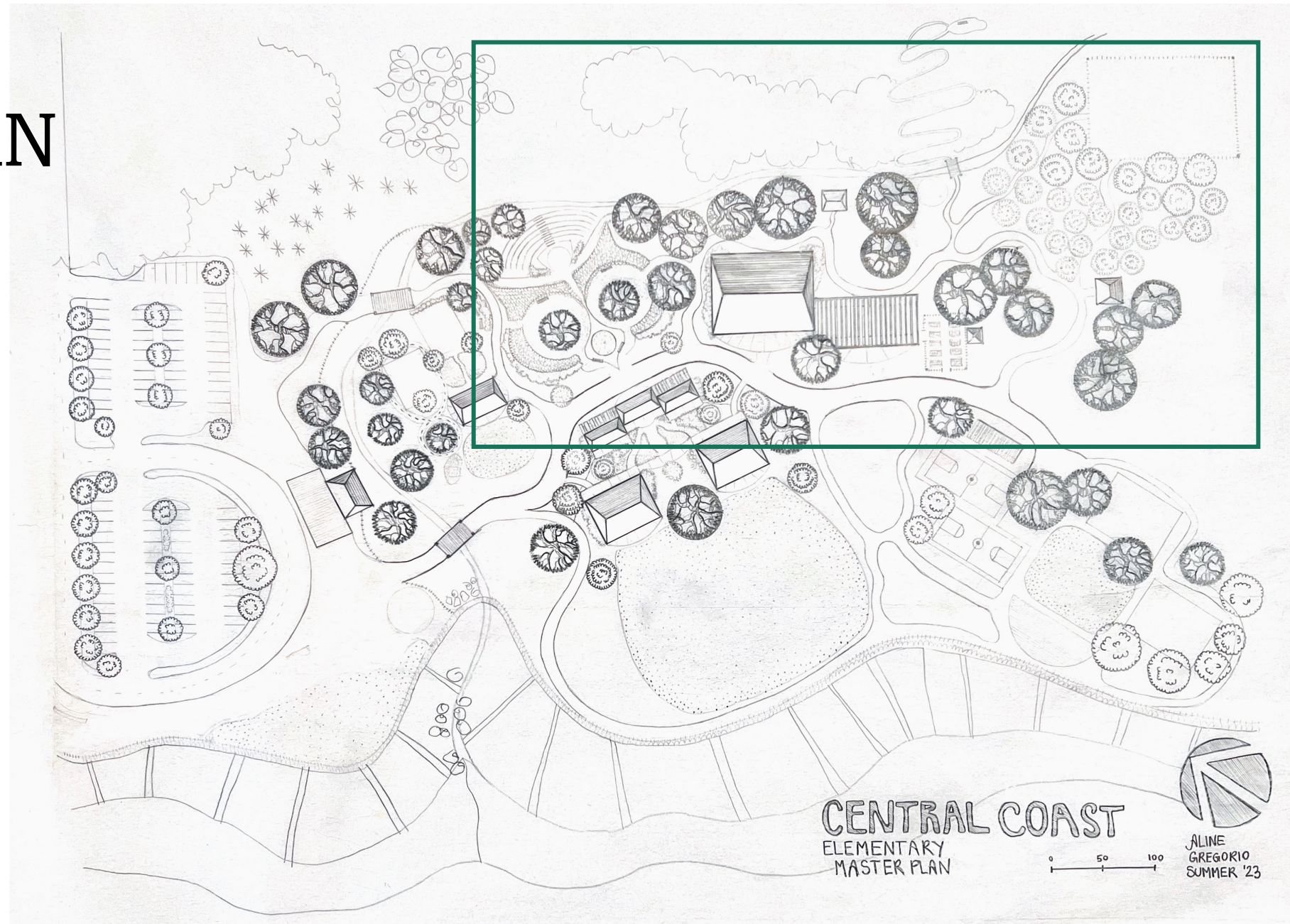
- library
- Art studio & STEM labs
- Elementary plaza
- Elementary classrooms
- Great lawn, ocean views



MASTERPLAN

FAMILY/COMMUNITY EVENTS

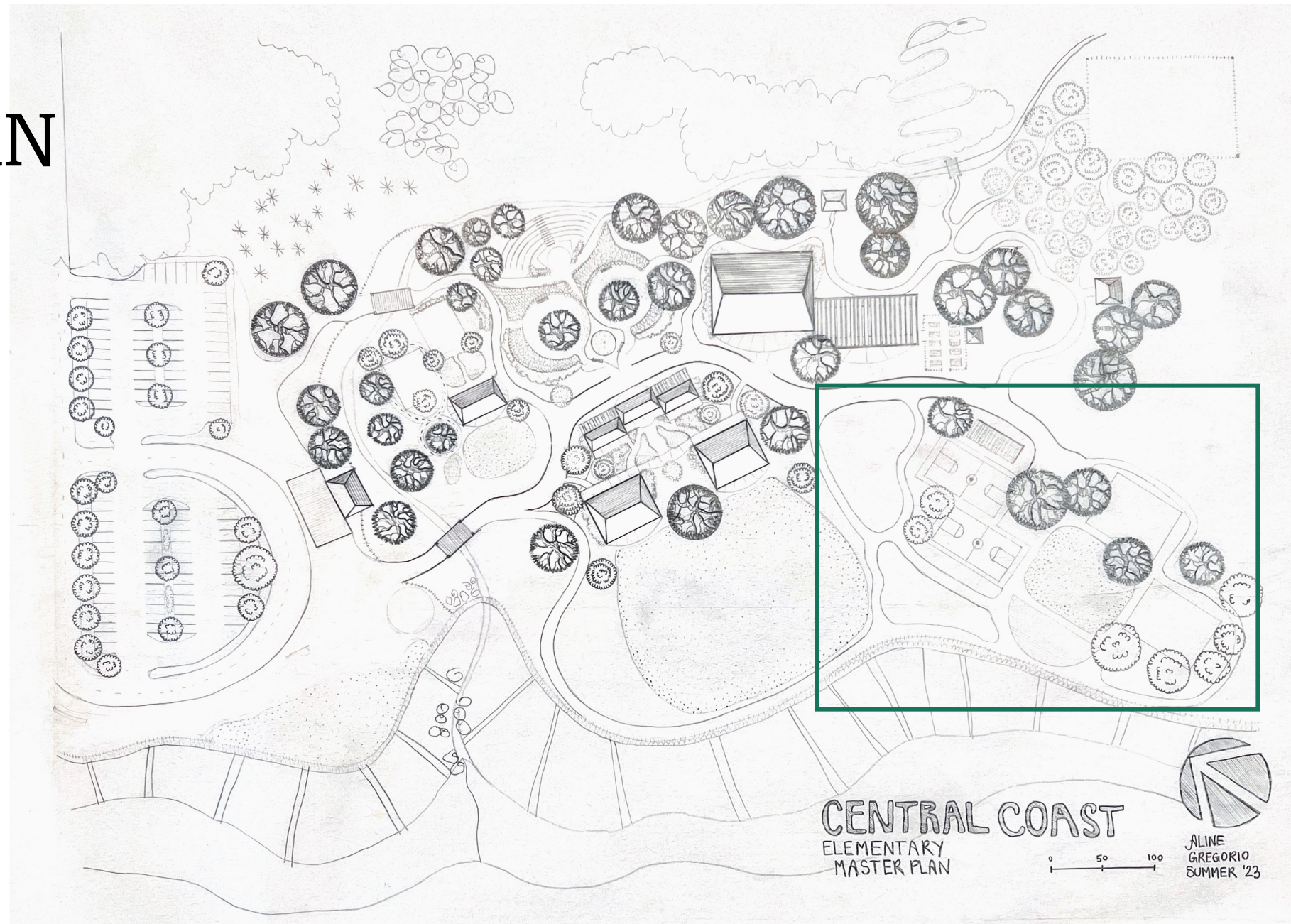
- *also accessible from overflow parking
- California Floristic Province garden/outdoor classroom
- Water feature
- Auditorium
- Outdoor shaded eating
- Raised bed edible garden
- Orchard
- Farm
- Habitat restoration hike
- Hike around premise



MASTERPLAN

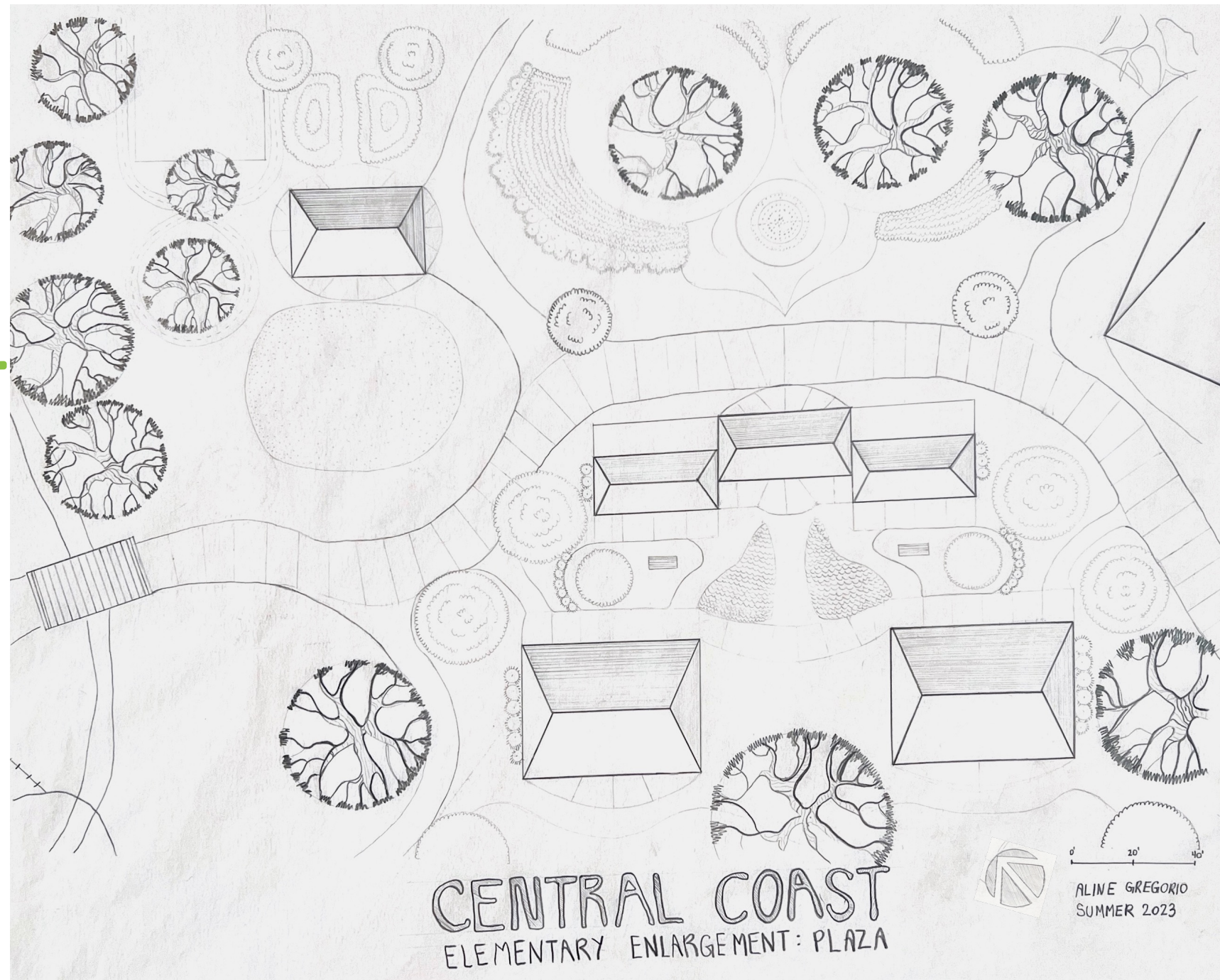
SPORTS COMPLEX

- Shade structure for basketball courts
- Handball courts under trees
- Added lawn for soccer
- A small deck for intimate outdoor ocean view events
- Coastal sagebrush restoration



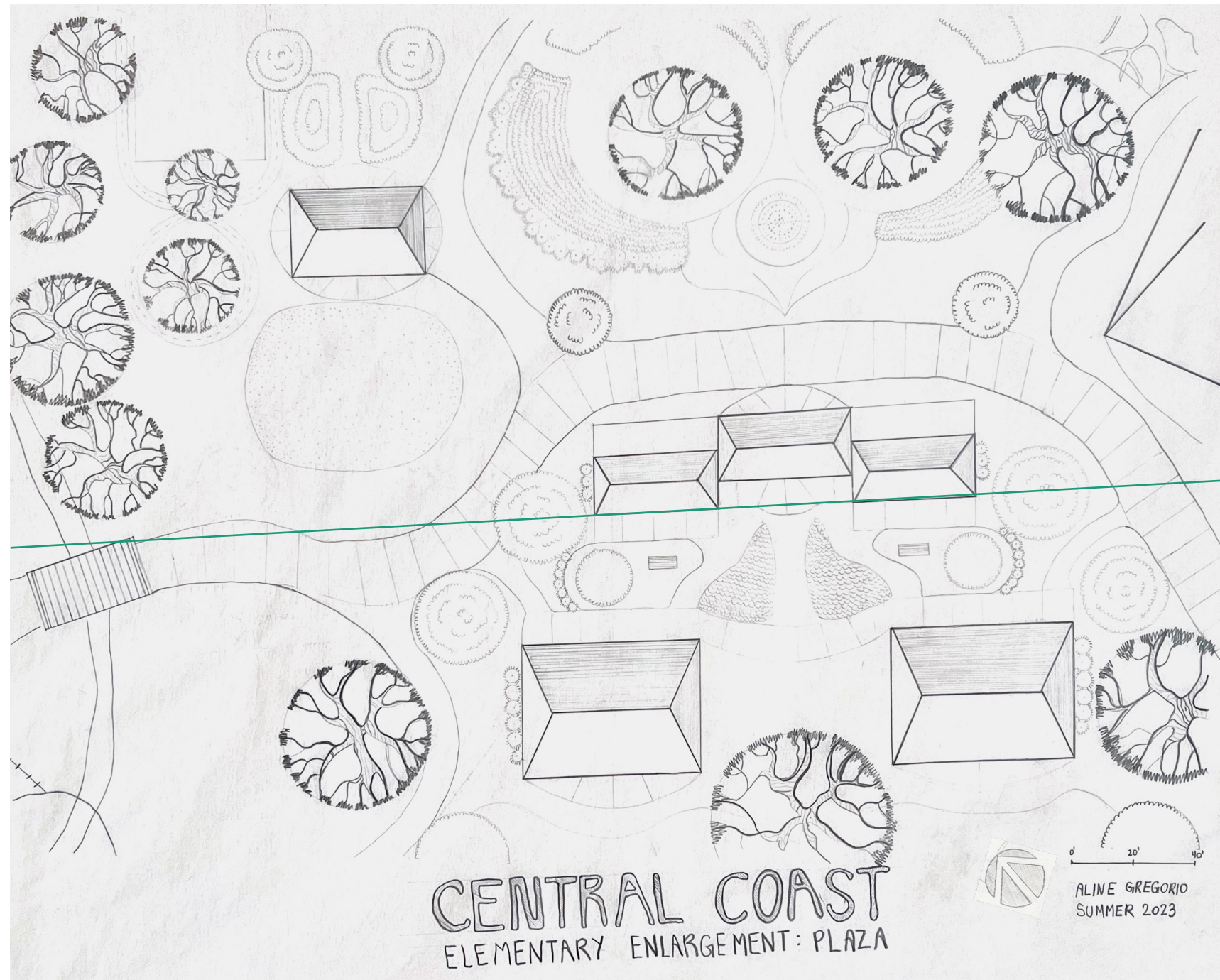
ENLARGEMENT, 1":20' scale CAMPUS QUAD

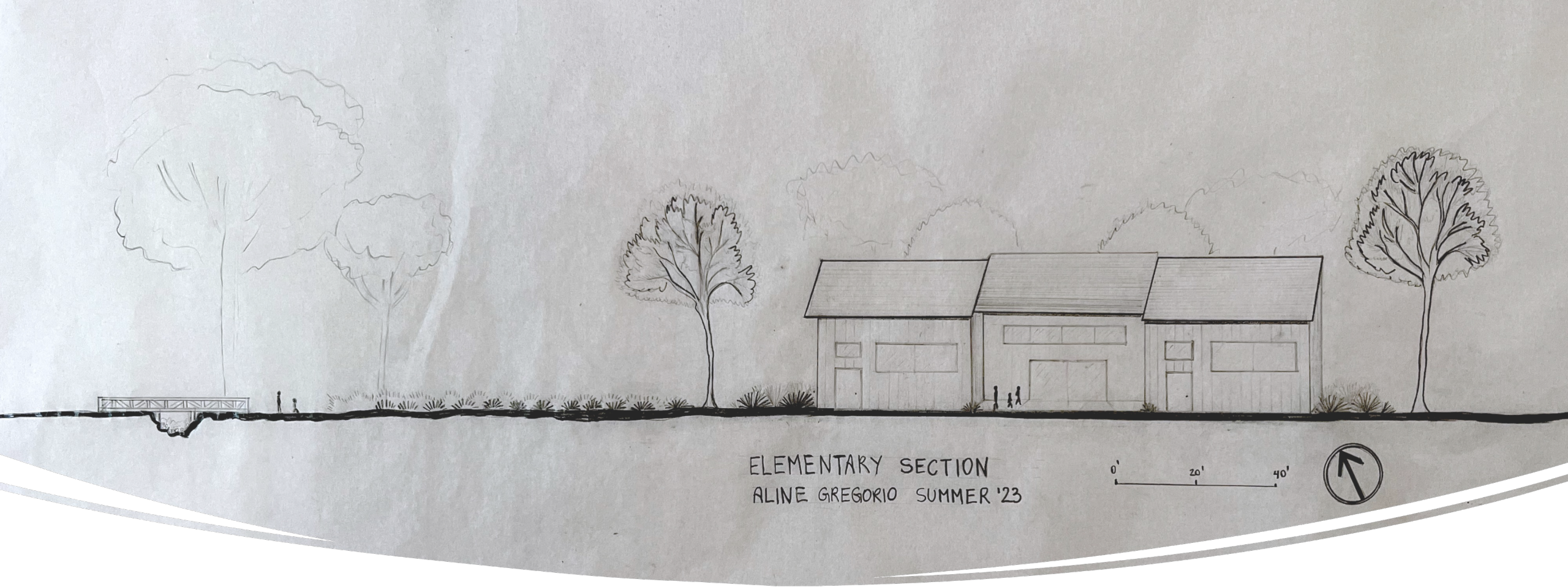
- California native garden
- Water feature
- Library
- STEM & art studio
- Elementary plaza
- Elementary classrooms
- Kinder lawn and classroom
- Kinder play



ENLARGEMENT, CAMPUS QUAD

- California native garden
- Water feature
- Library
- STEM & art studio
- Elementary plaza
- Elementary classrooms
- Kinder lawn and classroom
- Kinder play





NATURAL VERTICAL ELEMENTS

- Oak trees, represented in range of 80 - 100 feet
- Ornamental trees represented at 50 feet
- High ceiling buildings, natural wood, large windows





ENTRANCE

over the swale to receiving
ocean view area

PLAZA & OCEAN VIEW ELEMENTARY CLASSROOMS

academic plaza

California natives
garden/outdoor
classroom





Kinder
classroom
and play

library

Native plants



KINDER CLASS & PLAY
great lawn & back hill, sensory
playground, playhouse, glider road



THANK YOU!

ALINE GREGORIO