

TONGVA PARK



DESIGN GRAPHICS III
WINTER 2023
AMY DOUGLAS WHITE



“BEAUTIFUL DESIGN IS NOT SUFFICIENT. WE NEED TO DO MORE, WE NEED TO GO FURTHER – LOOKING FOR OUR PROJECTS TO PLAY LARGER TRANSFORMATIONAL ROLES: ECOLOGICALLY, ENVIRONMENTALLY, SOCIALLY, CULTURALLY AND POLITICALLY.”

-JAMES CORNER

TABLE OF CONTENTS

INTRODUCTION..... 4

LOCATION & CONTEXT..... 5

CONCEPT..... 7

ANALYSIS DIAGRAMS 8

TREE & PLANT PALETTE..... 10

SITE PLAN 14

SECTION ELEVATIONS..... 18

ENLARGEMENT & SKETCHES..... 20

ART & PLAY IN THE LANDSCAPE 22

SUMMARY / BIO 24

ACKNOWLEDGEMENTS 26



INTRODUCTION: A BRIEF HISTORY

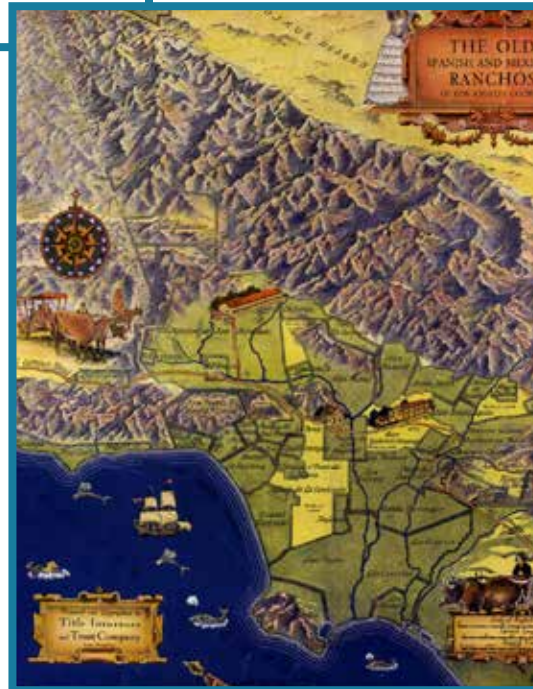


The park was named after the Gabriellino-Tongva People, one of the original indigenous groups to settle the Los Angeles basin around 8000 B.C. ⁵

Tongva Park was transformed from a roughly 6.4 acre parking lot into an urban oasis with hilltop overlooks, lush meadows, hidden pathways, and micro-forests.

In 1542, the Portuguese sailor Juan Rodríguez Cabrillo discovered

what is now Los Angeles. In 1769 Gaspar de Portolá created the first outpost in the area. The settlement was later named *El Pueblo De Nuestra Señora La Reina De Los Ángeles de Porciúncula*. ¹



Map of the Spanish & Mexican ranchos. ³

In 1821, California fell under Mexican Control. In 1848, the United States annexed California after defeating Mexico in the Mexican American War.

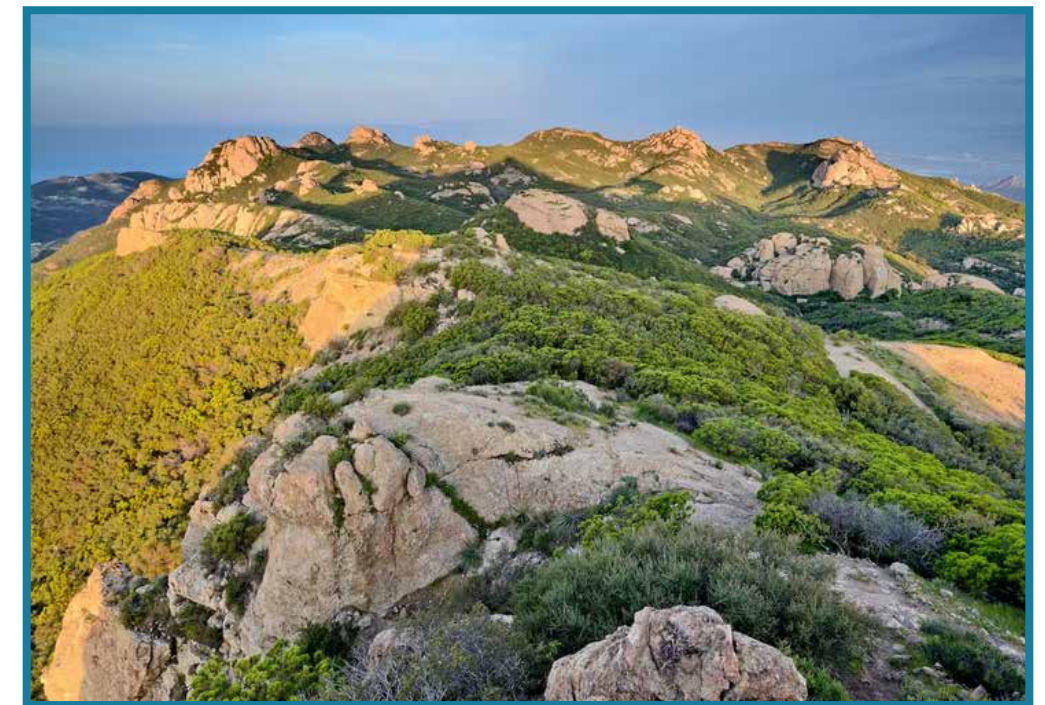
The construction of the Los Angeles aqueduct in 1913 brought massive metropolitan growth to the area.



Official opening of the water gates of the Los Angeles Aqueduct on November 5, 1913. ⁶

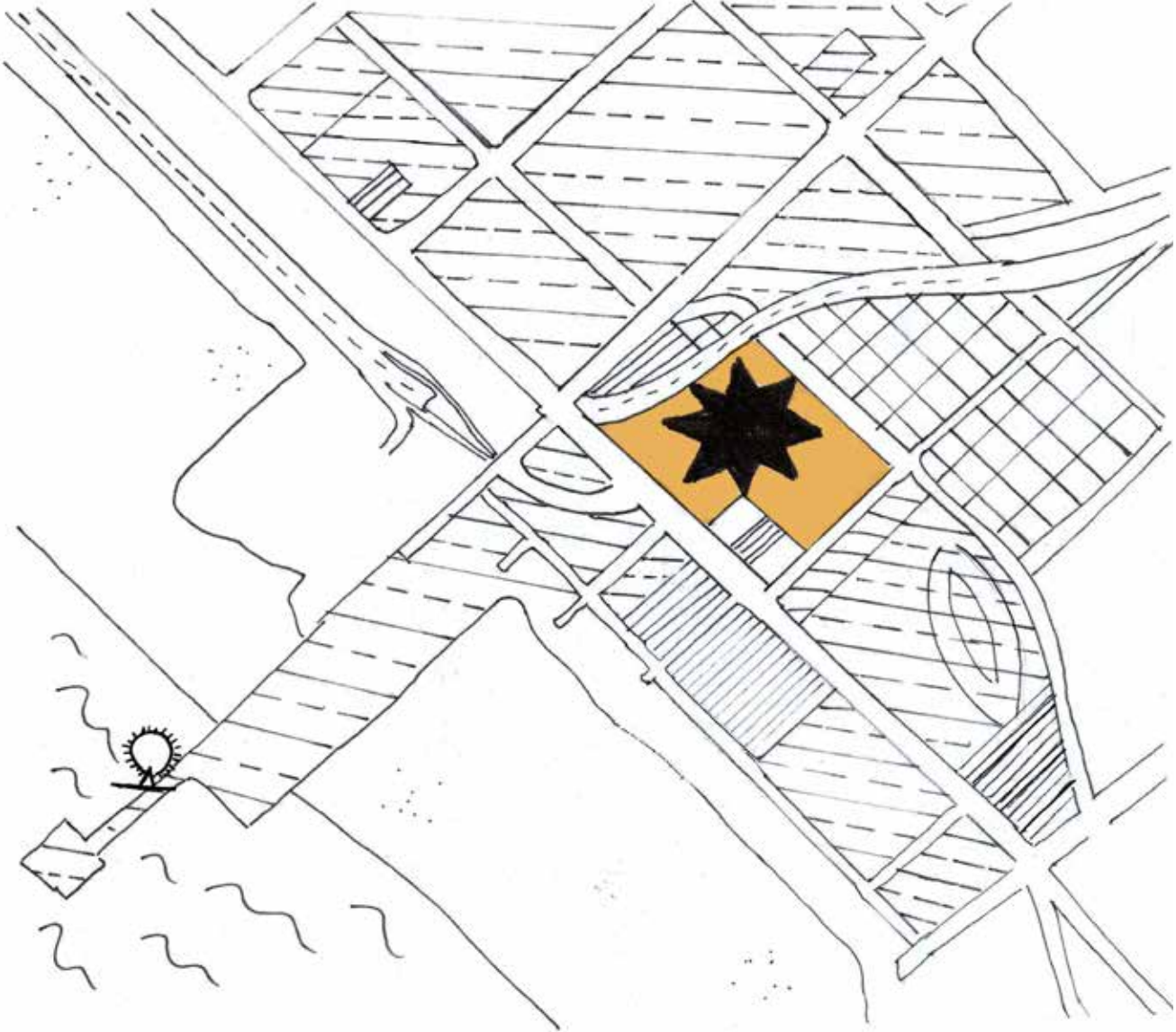






Gabrielino Indian Village of Sa-angma Playa del Rey, California, Ballona wetlands. ⁴



View from the Santa Monica Mountains ²

LOCATION & CONTEXT



-  COMMERCIAL
-  RESIDENTIAL
-  CIVIC
-  LODGING



SANTA MONICA PIER

NEW RESIDENTIAL
APARTMENTS

RAND CORPORATION



TONGVA PARK

10 FREEWAY

SANTA MONICA
CITY HALL

Aerial photo by Steve Proehl ⁷

CONCEPT

Paying attention to and addressing the details in an environment elevates the human experience in a space. Tongva Park is a great example of how sustainability can inform and enhance design. It is one of the few urban public spaces of its scale that highlights California native plants. Inspired by the pre-existing landscape of the area, James Corner Field Operations emulated the rolling hills and natural flow of the Arroyo riverbed by creating biomasses and bioswales that are interconnected by curvilinear

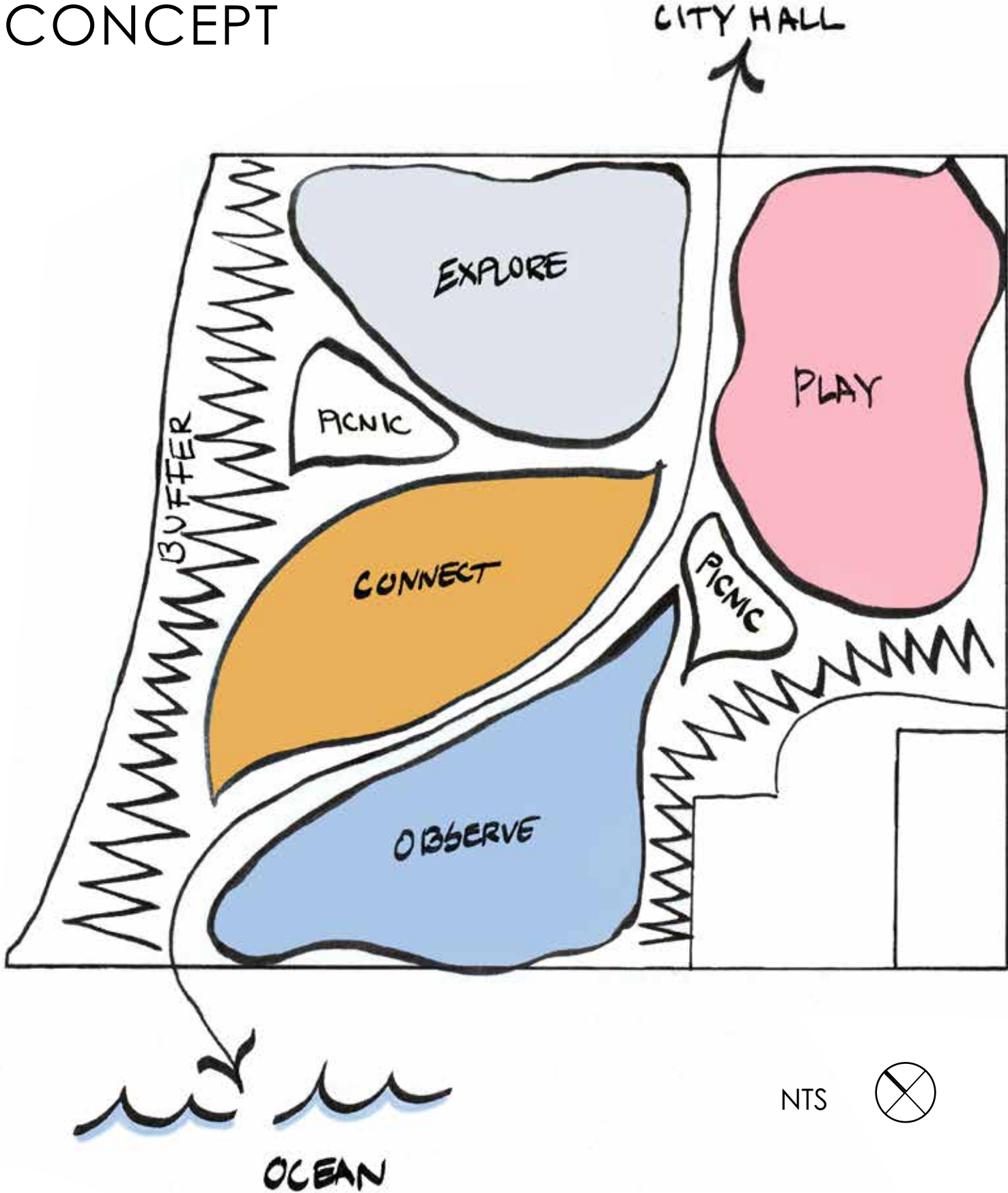
pathways. These main hilltops - Garden Hill, Observation Hill, Discovery Hill, and Gathering Hill- allow people of all ages to enjoy a multi-sensory experience as they walk, meander or play through the site.



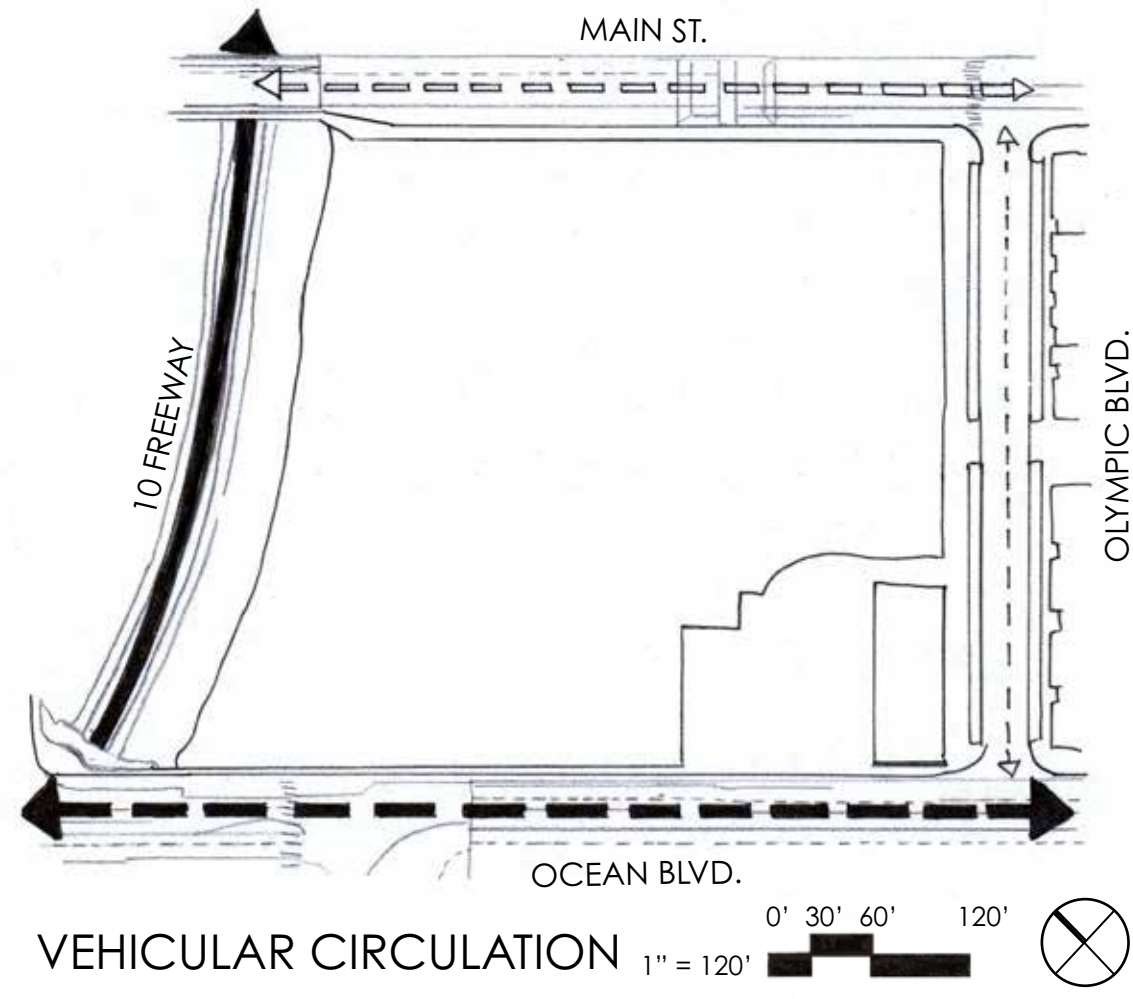
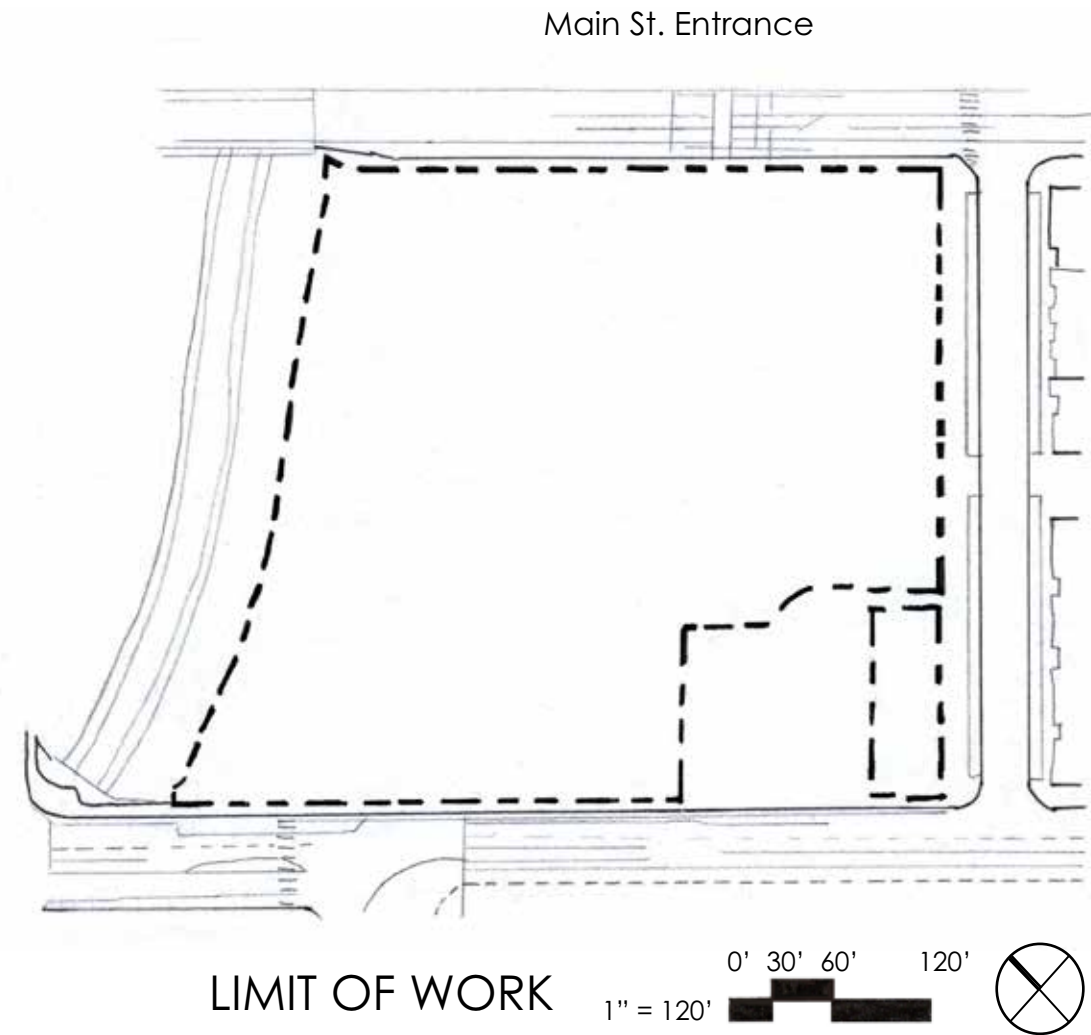
Photo: James Corner Field Operations⁸



Santa Monica Mountains⁹



ANALYSIS DIAGRAMS



Main St. Entrance



Olympic Blvd.



Ocean Blvd.

Approximately 70% of the hardscape in Tongva Park is permeable. A combination of concrete flatwork with small and large aggregate, wood, and decomposed granite, were used for pedestrian circulation throughout the park. ¹⁰



Concrete & aggregate

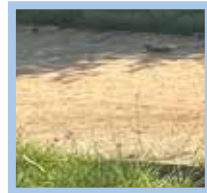


Aggregate

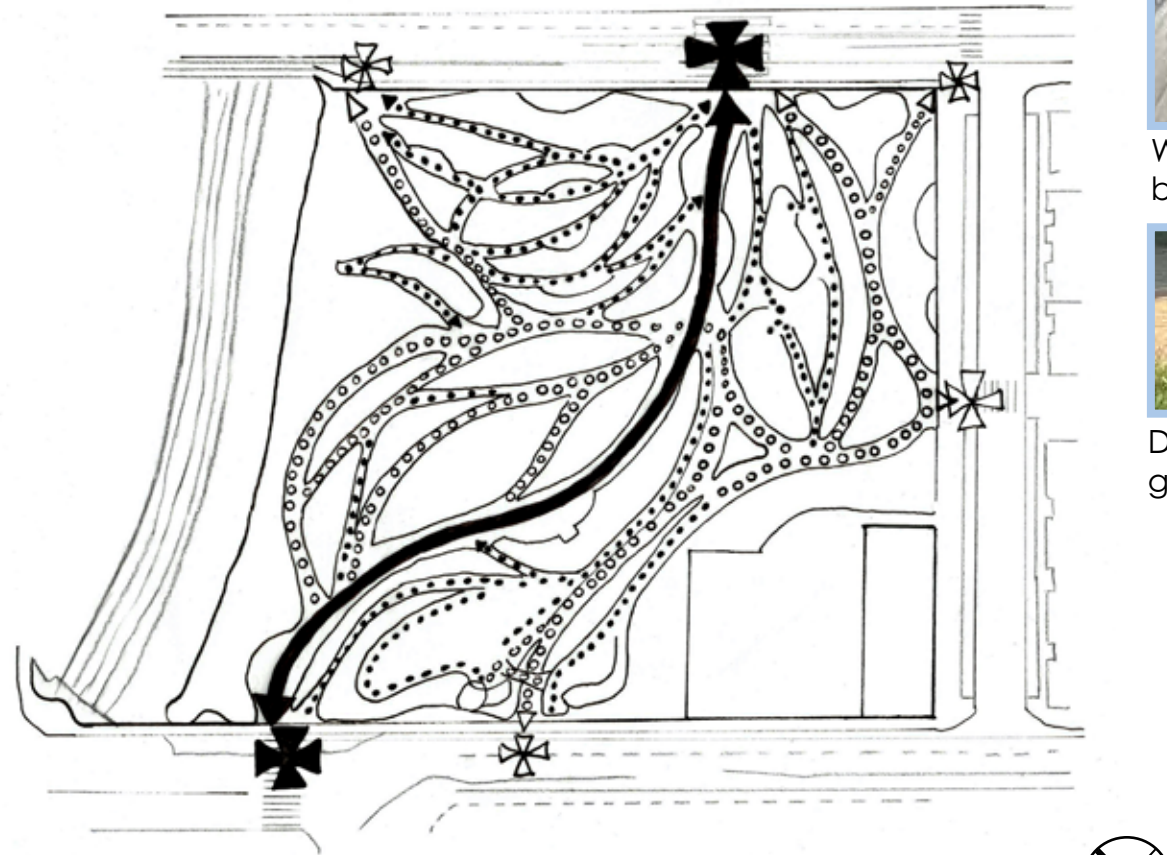
The site captures stormwater through bioswales, permeable pavement and a dry well. The irrigation system uses recycled water when rain is not enough.



Wooden bridge



Decomposed granite

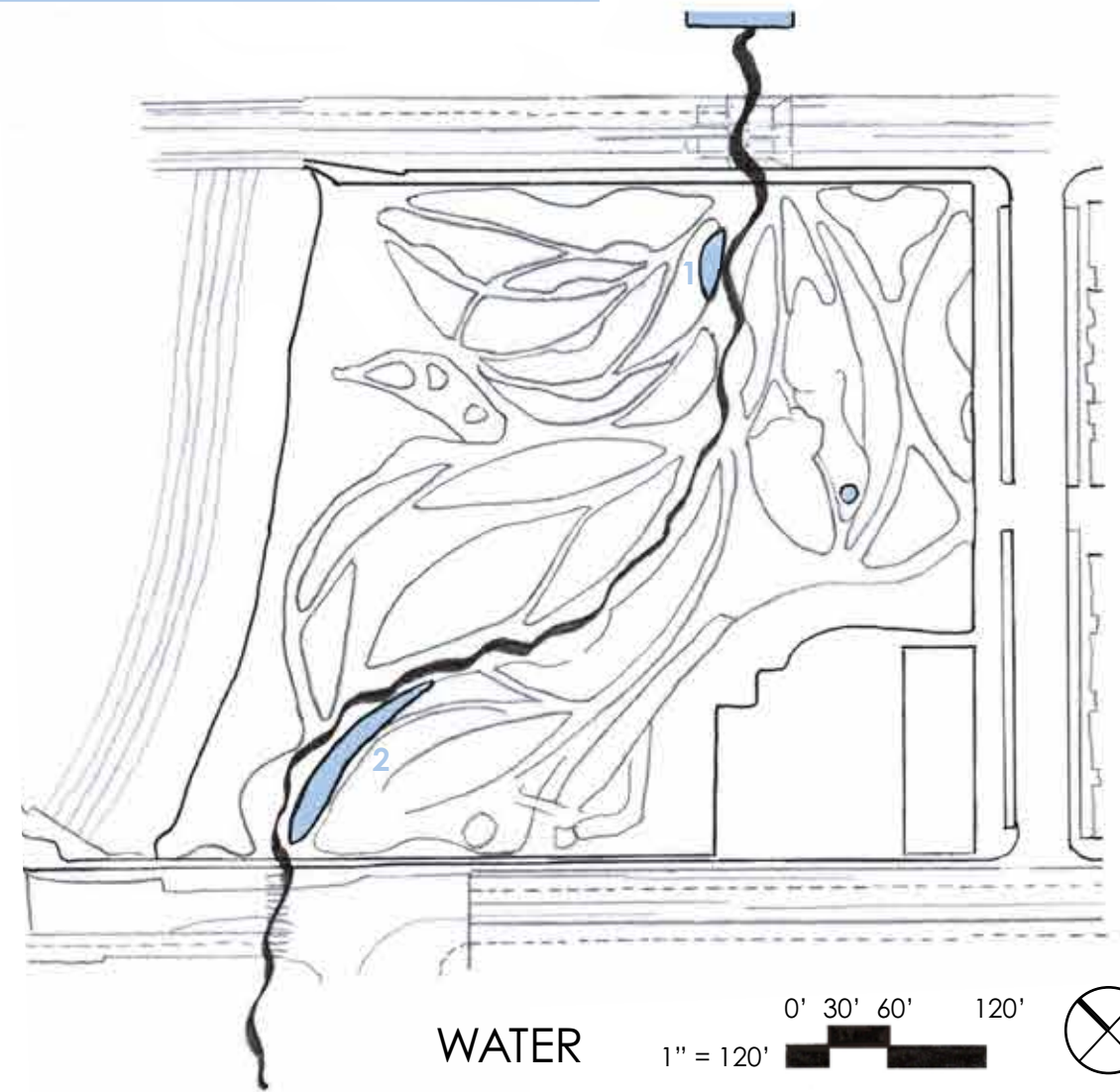


PEDESTRIAN CIRCULATION

- ↔ PRIMARY
- ◁○○○○▷ SECONDARY
- ◁...▷ TERTIARY

POINTS OF ENTRY

- ⊠ PRIMARY
- ⊠ SECONDARY



WATER

- WATER FEATURE
- ~ SYMBOLIC FLOW



Fountain 1



Fountain 2

TREE PALETTE



Over 300 new trees were grouped into three main California native plant communities: riparian, chaparral and coastal scrub. A mixture of California natives, appropriately adaptive species, and existing trees create varying microclimates in the park. The large existing trees - the Moreton Bay Fig and the 3 large Ficus trees - are beloved in the community and have their own names: "Morty" & "The Three Amigos." ¹¹

TREE CANOPY

-  PINE
-  OLIVE / OAK
-  SPECIMEN
-  SYCAMORE
-  FICUS
-  PALM

NEW TREES PLANTED IN THE PARK



PINE TREES

- 37 x PINUS PINEA (UMBRELLA PINE)
- 23 x PINUS TORREYANA* (TORREY PINE)
- 29 x PINUS HALAPENSIA (ALEPPO PINE)



Pinus torreyana



OLIVE & OAK TREES

- 7 x OLEA EUROPEA (OLIVE TREE)
- 26 x OLEA EUROPEA "SWAN HILL" (FRUITLESS OLIVE TREE)
- 7 x QUERCUS SUBER (CORK OAK)
- 2 x QUERCUS TOMENTELLA* (ISLAND OAK)



Olea europaea & Quercus tomentella



SPECIMEN TREES

- 13 x ARBUTUS MARINA (STRAWBERRY TREE)
- 2 x CALODENDRUM CAPENSE (CAPE CHESTNUT)
- 2 x CEIBA SPECIOSA (FLOSS SILK TREE)
- 6 x ERYTHRINA CORALLOIDES (NAKED CORAL TREE)
- 2 x PARKINSONIA ACULEATA (DESERT MUSEUM)
- 3 x PLUMERIA RUBRA (FRANGIPANI)
- 6 x TABELULA IMPETIGINOSA (PINK TRUMPET TREE)



Tabetula Impetiginosa



SYCAMORE TREES

- 52 x PLATAUS RACEMOSA* (WESTERN SYCAMORE)
- 17 x UMBELLULARIA CALIFORNICA* (CALIFORNIA BAY)



Plataus racemosa* ¹³



FICUS TREES

- 13 x FICUS NITIDA (INDIAN FIG)
- 6 x FICUS RUBIGINOSA (RUSTY LEAF FIG)

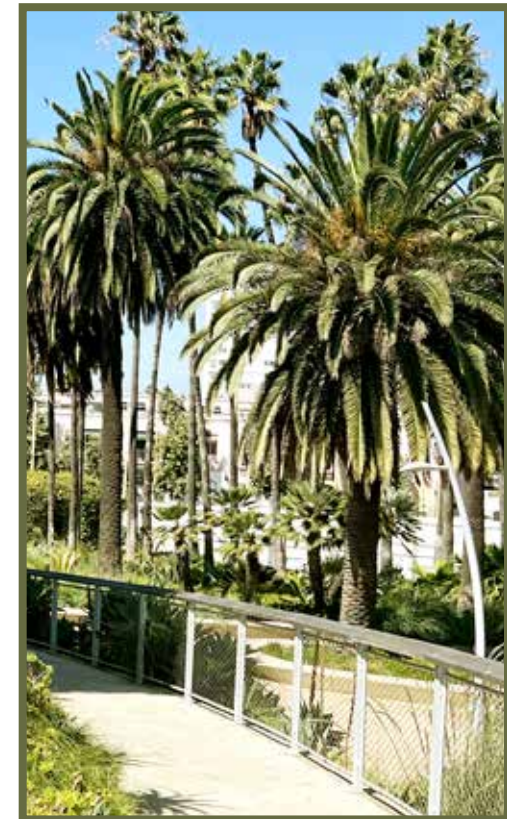


"Morty" the large Moreton Bay Fig being transplanted to its new location. * ¹²



PALM TREES

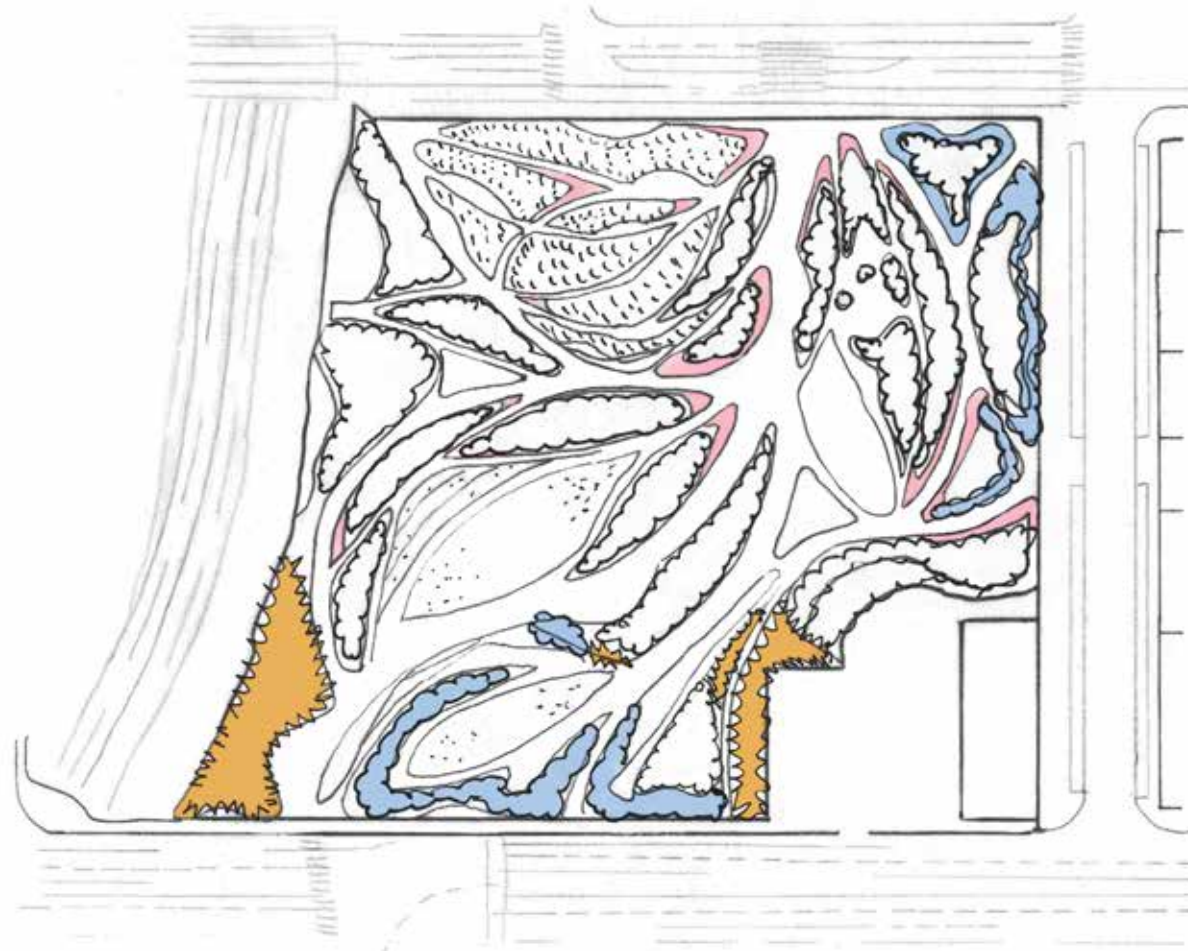
- 10 x PHOENIX RECLINATA (SENEGAL DATE PALM)
- 18 x RAVENEA GLAUCA (MAJESTY PALM)
- 1 x TRACHYCARPUS FORTUNEI (WINDMILL PALM)



Phoenix reclinata

*=CALIFORNIA NATIVE

PLANT PALETTE



0' 30' 60' 120'
1" = 120'



Thousands of plants were carefully placed throughout the site based on their individual needs or tolerance to sun exposure, shade, wind, soil, and water requirements. The site's bioswales offer natural water retention, while the dry well captures stormwater runoff. The irrigation system uses recycled water from the Santa Monica Urban Runoff Recycling facility nearby.¹⁴

PLANTING MIX

- TURF
- MEADOW MIX
- PALMS AND CYCAD MIX
- SUCCULENT MIX
- SWALE MIX
- GARDEN MIX

TURF



Grass turf used in the amphitheater and in Observation Hill



*=CALIFORNIA NATIVE

MEADOW MIX



Artemisia californica*



Salvia leucophylla*



Muhlenbergia lindheimeri

PALMS & CYCAD MIX



Cycas revoluta



Trachycarpus fortunei



Phoenix canariensis

SUCCULENT MIX



Aloe perfoliata



Aloe arborescens



Kumari plicatilis

SWALE MIX



Amaryllis belladonna



Various grasses and agaves



Carex praegracillis

GARDEN MIX



Zephyranthes drummondii



Alstroemeria



Symphyotricum laeve blue aster

SITE PLAN



DIGITALLY RENDERED WITH PHOTOSHOP & INDESIGN



SITE PLAN



RENDERED BY HAND WITH BLACK INK, AD MARKERS AND COLORED PENCILS



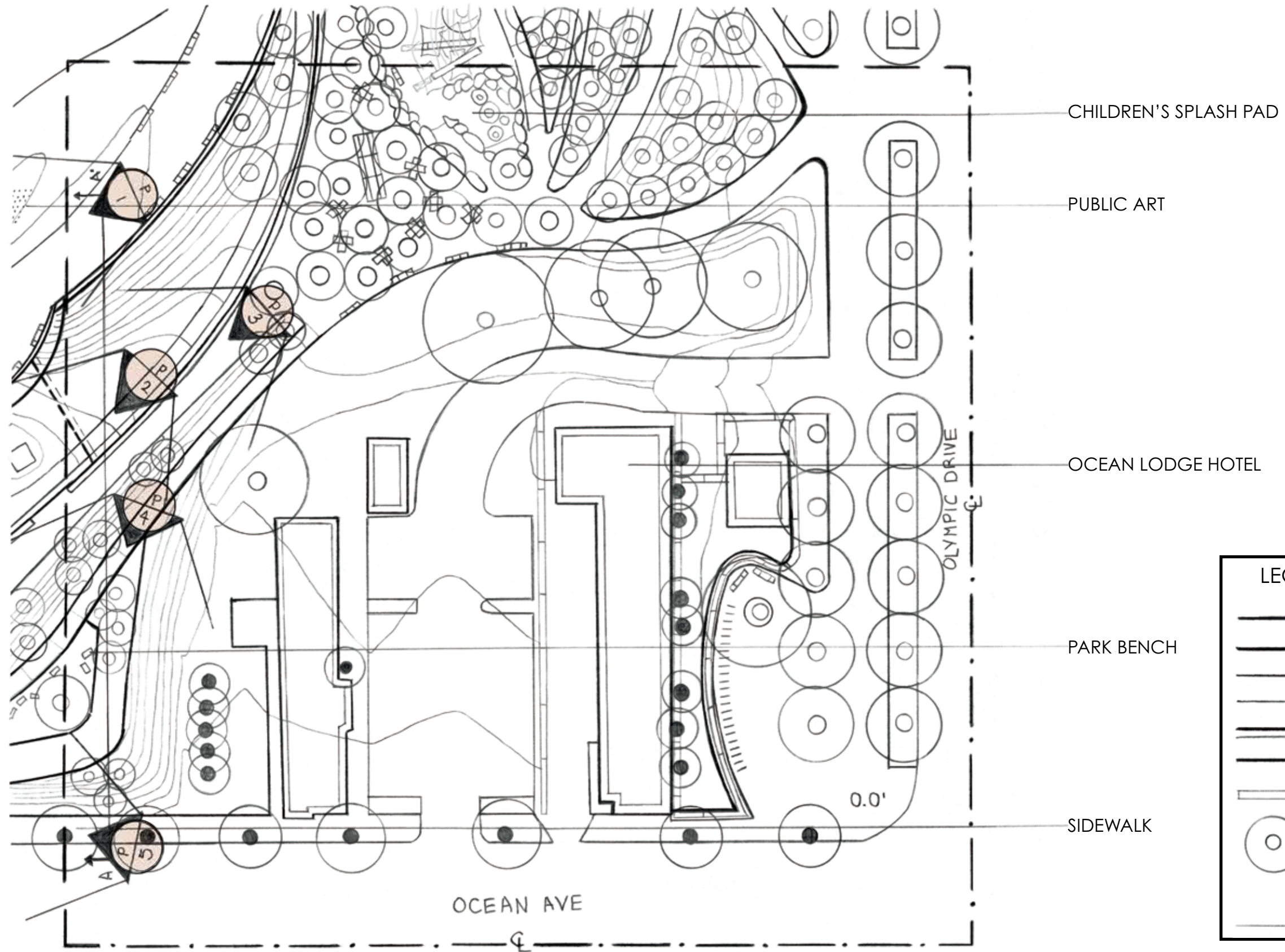
BLACK & WHITE SITE PLAN



HAND-DRAWN WITH INK AND AD MARKER



BLACK & WHITE ENLARGEMENT

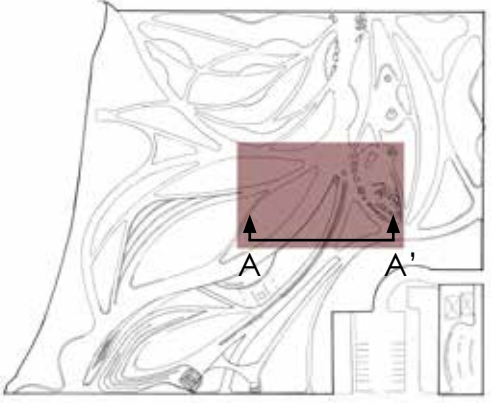
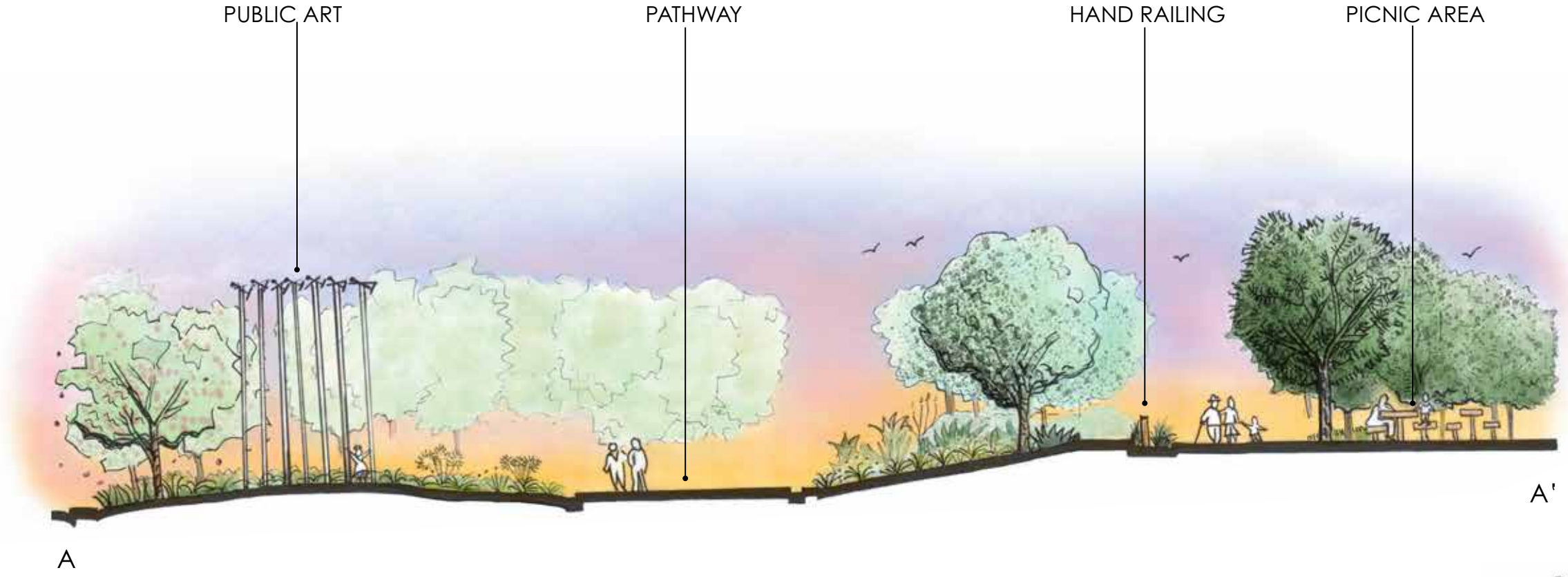


LEGEND	
	STUDY BOUNDARY
	MATCH LINE
	PEDESTRIAN CIRCULATION
	VEHICULAR CIRCULATION
	BUILDING
	RETAINING WALL
	FENCE
	TREE
	PALM TREE
	COUNTOUR INTERVAL = 1'

SOUTH EAST QUADRANT STUDY IN PENCIL • ENHANCED WITH PHOTOSHOP



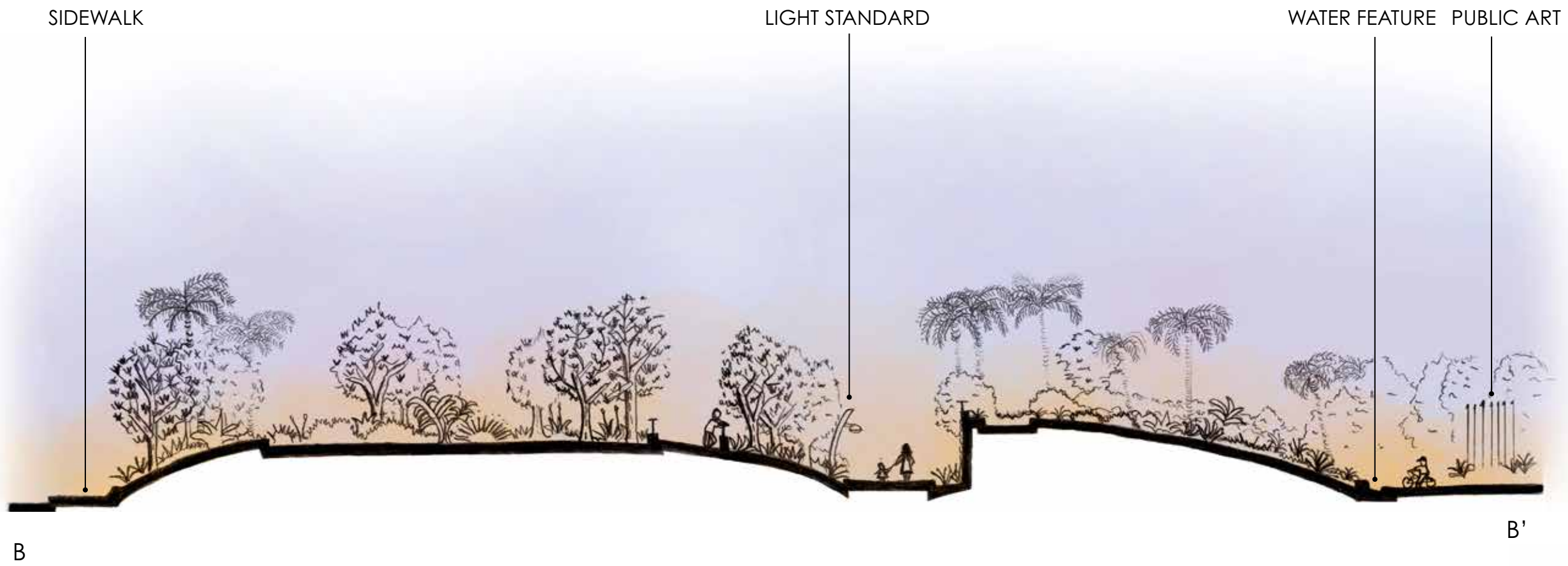
SECTION / ELEVATIONS



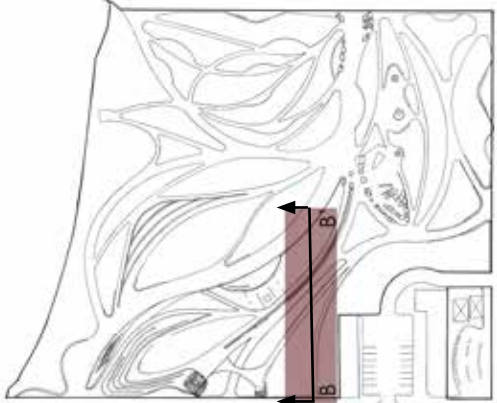
KEY MAP NTS ⊗

HAND-DRAWN WITH INK • RENDERED WITH PHOTOSHOP





HAND-DRAWN WITH PENCIL • COLORED WITH PHOTOSHOP

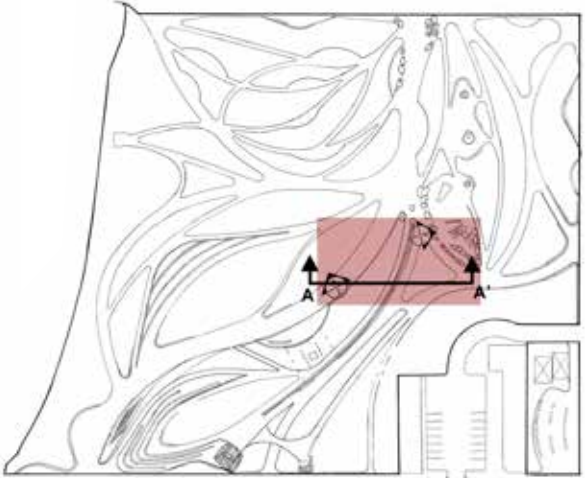


KEY MAP NTS ⊗

ENLARGEMENT

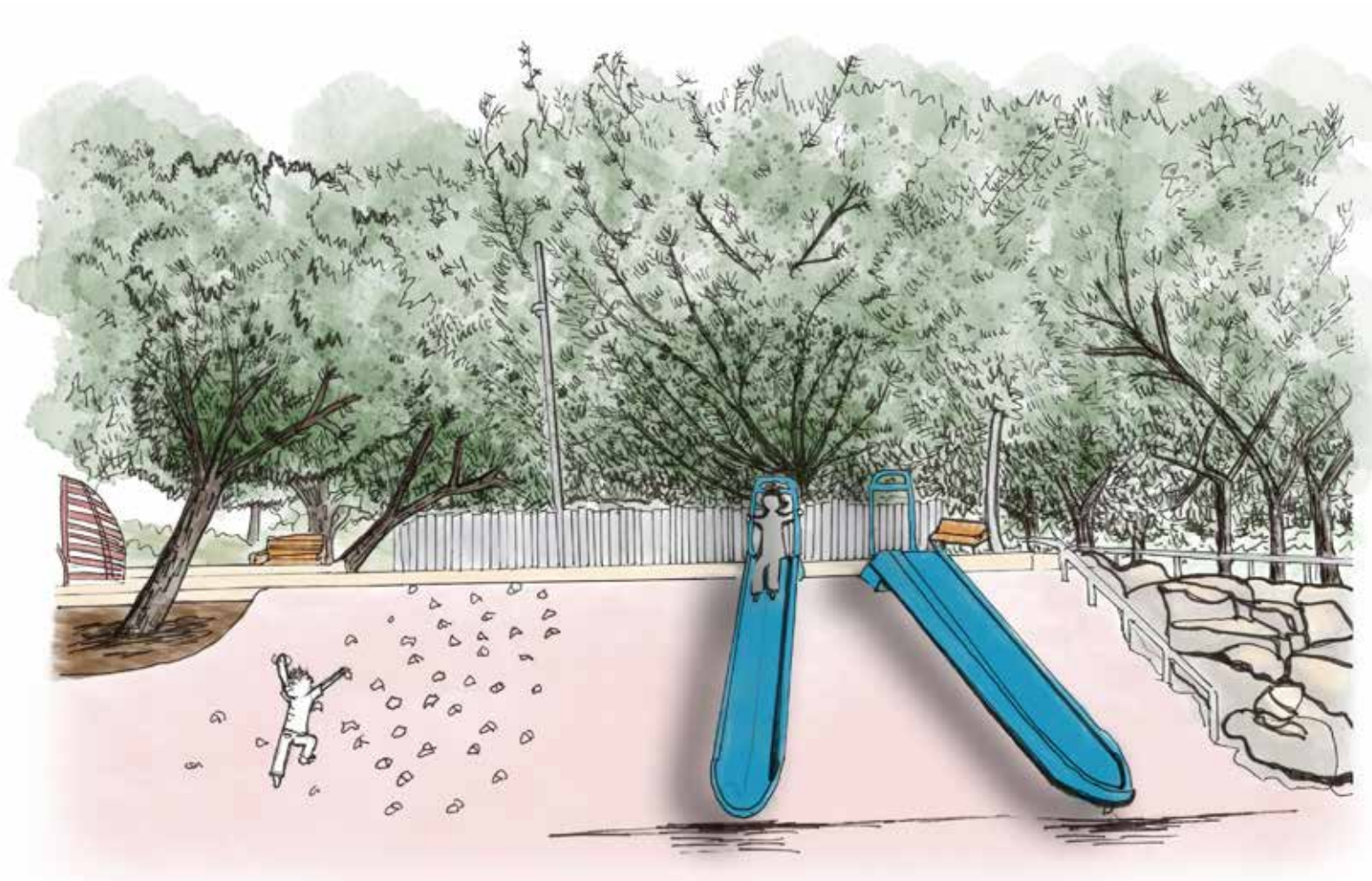


HAND-DRAWN WITH INK • RENDERED WITH PHOTOSHOP



KEY MAP NTS

PERSPECTIVE SKETCHES



$\frac{P}{1}$ View of slides in Tot Lot facing east

HAND-DRAWN WITH INK • RENDERED WITH PHOTOSHOP

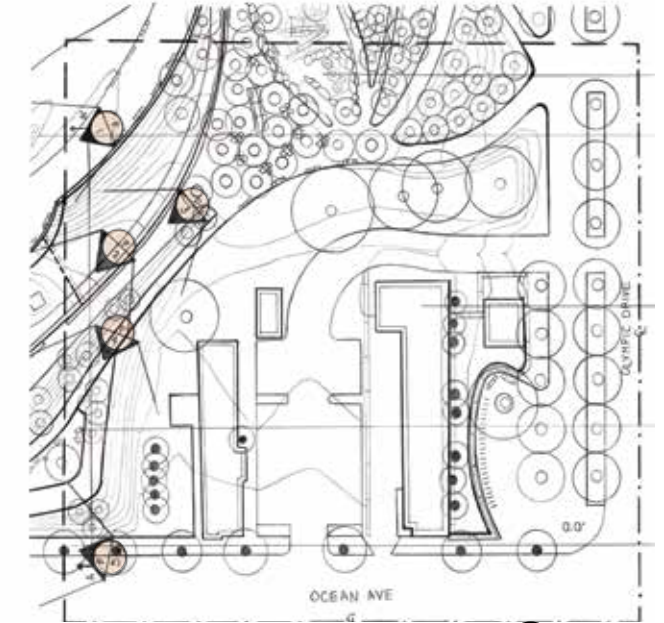


$\frac{P}{2}$ View of "Weather Field" sculpture looking north towards Amphitheater

DG 1 PERSPECTIVE SKETCH



 Northwest view of path towards Restrooms and Ocean Blvd.



KEY MAP NTS 



ART & PLAY IN THE LANDSCAPE



"Weather Field" sculpture

Public art in the landscape adds a powerful component to any site or park. Tongva Park features a prominent sculpture by artist Iñigo Manglano-Ovalle which features 49 poles topped with weather vanes and anemometers.



Photo: Tim Street Porter ¹⁶



Observation decks with views of the Pacific Ocean.
Photo: Tim Street Porter ¹⁵



The tot lot's play equipment echoes the design of the park with its curvilinear structures that peak through the greenery of large tree canopies and planted hilltops. A splash pad offers refreshing play on hot days.



SUMMARY

The guidance and professional wisdom of my design graphics teachers has been invaluable. I often find myself echoing their words and phrases:

“Be bold. Never draw a line you don’t know. Perspective is never perfect.”

-David squires

“Communicate ideas clearly. Push yourself. Practice, practice, practice”

-Rebecca schwarner

“The best work combines hand work with computer graphics. You want to create a family of graphics that helps tell a nice story.”

-Laura razo

My biggest takeaway from Design Graphics 1, Design Graphics 2 and Design Graphics 3, is how important it is to have a strong and clear graphic language. I have learned that digital renderings and hand graphics can enhance each other. I equate it to making music: I record vocals and analog keyboards and then use computer programs to edit, manipulate and affect the sounds. The computer is a tool that can strengthen the art, but it doesn’t replace it. Keeping that human element, like a vocal, a hand-drawn symbol or perspective, connects the audience to the art.

I’m grateful for my teachers, whose diverse teaching styles have helped me grow in ways I couldn’t have imaged a year go. I’m also thankful for my cohort for being both inspiring and encouraging. Lastly, I’m thankful to my family for their love, support and patience while I continue my studies throughout the program.

BIOGRAPHY



Amy douglas white was born and raised in Madrid, Spain. She attended Emerson College in Boston and later moved to Los Angeles where she worked in the music industry for several years. She toured and recorded with various artists, culminating with the release of her solo album “Ashes” in 2021.

While living in an artist collective in downtown Los Angeles, she started a rooftop garden with her roommates. This sparked a passion for gardening and transforming spaces. She became a Master Gardener through the UC Master Gardener program and has been volunteering ever since.

During the pandemic, she decided to change careers and seek a degree in landscape architecture. Amy cares deeply about the environment and hopes to have many opportunities to create sustainable and healing spaces in Los Angeles and beyond.

ACKNOWLEDGEMENTS

IMAGE SOURCES:

Page 4 Endnote 2, Photo: Santa Monica Mountains. Peak Visor, <https://www.peakvisor.com/>. Accessed March, 2023

Page 4 Endnote 3, Map: Mexican and Spanish Ranchos map. Tongva People, <https://www.tongvapeople.org/> Accessed March, 2023

Page 4 Endnote 4 Painting: Leighton Thomas, Mary "Wiyot's Children," Gabrielino Indian Village of Saangma Playa del Rey, California, Ballona wetlands. "The Tongva", The Santa Monica Bay Audubon Society, <https://smbasblog.com/the-tongva/>. Accessed March 10, 2023

Page 5 Endnote 5, Map: Territory of the Tongva People. The Santa Monica Bay Audubon Society, <https://smbasblog.com/the-tongva/>. Accessed March 10, 2023.

Page 5 Endnote 6, Photo: "The Story of the Los Angeles Aqueduct". Water and Power, https://waterandpower.org/museum/The_Story_of_the_Los_Angeles_Aqueduct.html. Accessed March, 2023

Page 6 Endnote 7, Photo: Proehl, Steve. Tongva Park and Ken Genser Square. ASLA, https://www.asla.org/2018awards/455654-Tongva_Park_And_Ken_Genser.html. Accessed March 15, 2023.

Page 7 Endnote 8, Photo: James Corner Field Operations. Tongva Park and Ken Genser Square. ASLA, https://www.asla.org/2018awards/455654-Tongva_Park_And_Ken_Genser.html. Accessed March 15, 2023.

Page 7 Endnote 9, Photo: Santa Monica Mountains Peak Visor, <https://www.peakvisor.com/>. Accessed March, 2023

Page 11 Endnote 12, Photo: James Corner Field Operations. Tongva Park and Ken Genser Square. ASLA, https://www.asla.org/2018awards/455654-Tongva_Park_And_Ken_Genser.html. Accessed March 15, 2023.

Page 11 Endnote 13 Photo: "Western Sycamore" La Orilla Trialhead, September 2016. Nature Collective, <https://naturecollective.org/plant-guide/details/california-sycamore/>. Accessed Dec., 2022

Page 23 Endnote 15, Photo: Porter, Tim Street. Tongva Park and Ken Genser Square. ASLA, https://www.asla.org/2018awards/455654-Tongva_Park_And_Ken_Genser.html. Accessed March 15, 2023

Page 23 Endnote 16, Photo: James Corner Field Operations. Tongva Park. Field Operations, <https://www.fieldoperations.net/project-details/project/tongva-park.html>. Accessed March, 2023

TEXT SOURCES:

Page 2 Quote: Corner, James. "James Corner interview" By Michele Roda, October 6, 2020. *Il Giornale Dell Architettura*, <https://ilgiornaledellarchitettura.com/2020/10/06/james-corner-interview/>. Accessed March 15, 2023.

Page 4 Endnote 1: Los Angeles. History.com Editors, History, <https://www.history.com/topics/us-states/los-angeles-california>. A&E Television networks, February 28, 2019. Accessed March 16, 2023.

Page 4 Endnote 5: Los Angeles. History.com Editors, History, <https://www.history.com/topics/us-states/los-angeles-california>. A&E Television networks, February 28, 2019. Accessed March 16, 2023.

Page 9 Endnote 10, Page 10 Endnote 11 & Page 12 Endnote 14: Tongva Park and Ken Genser Square. ASLA, https://www.asla.org/2018awards/455654-Tongva_Park_And_Ken_Genser.html. Accessed March 15, 2023