




TONONGVA PARK

Alicia Bartoli-Arnold

Design Graphics III

Spring 2023



“The beauty of the landscape - where sand, water, reeds, birds, buildings, and people all somehow flowed together - has never left me.” - Zaha Hadid

1	<u>introduction</u>	04
2	<u>history</u>	06
3	<u>context</u>	08
4	<u>analysis</u>	10
5	<u>concept</u>	16
6	<u>plant palette</u>	22
7	<u>summary</u>	24
8	<u>acknowledgments</u>	26

01 introduction

A New Process

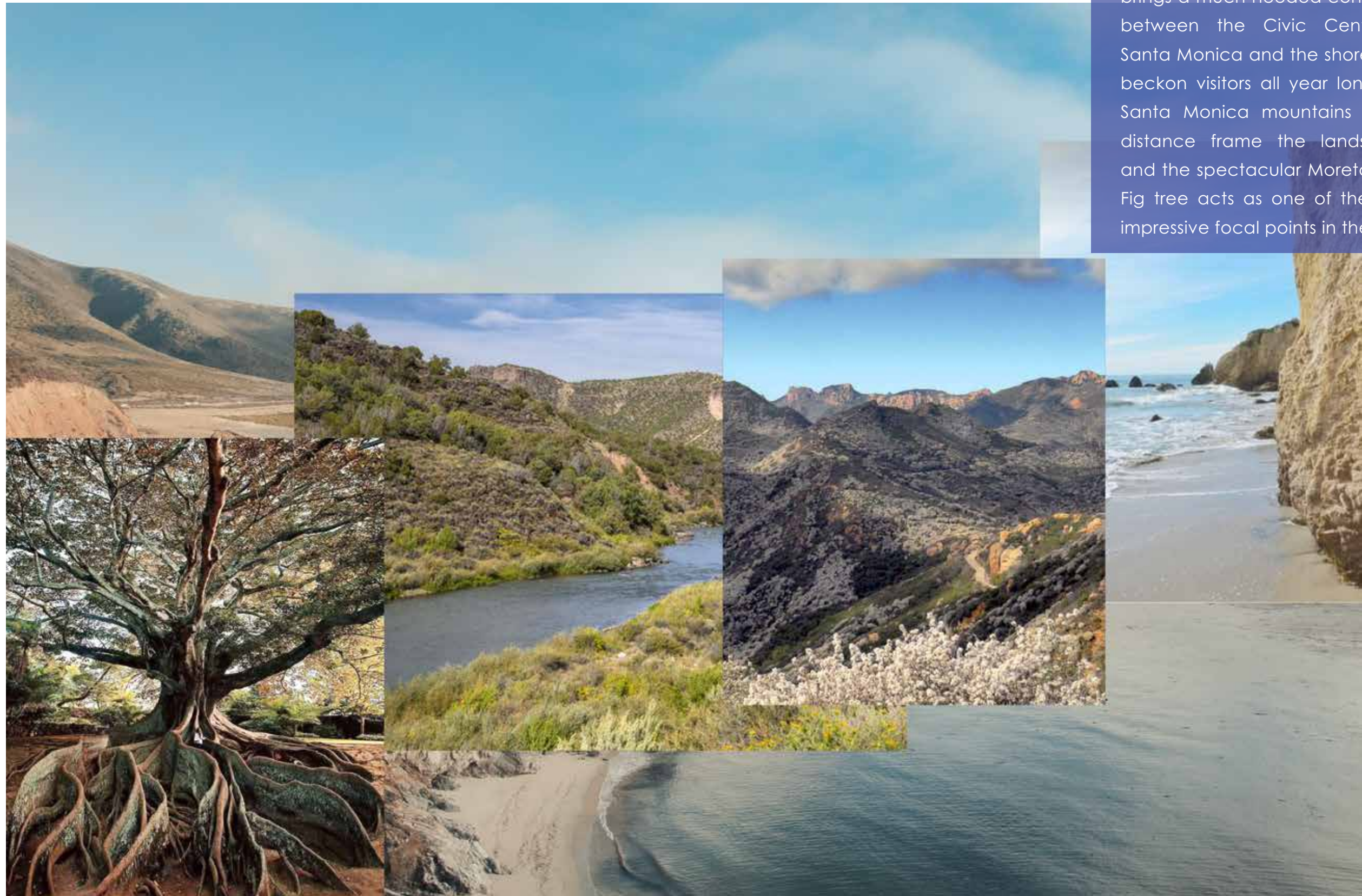
Tongva Park as an architectural case study in the field of Landscape Architecture offers many layers of exploration and investigation. Through analyzing historical aspects of the site, assessing the context of such a project, getting intimate with the site plans and planting schemes, and observing the impact of the built project, the teachings of this case study will stay with me as a learner throughout my endeavors in Landscape Architecture.

This is, for me, a new arena. I've come to this point from a visual arts background, specifically in Painting and Graphic Design. I taught Visual Art and Design in public schools for the last 16 years; this was both an incredibly rewarding yet challenging experience that has undoubtedly prepared me well for this career change: the need for clear communication and extreme organization, adapting to circumstances at a moment's notice, juggling responsibilities at the same instant, orienting from a place of accountability and transparency with our communities, navigating the bureaucracy of the public sphere, and of course, having an abundance of creativity. I'm really looking forward to this!



- Alicia Bartoli-Arnold, May 2023

Inspired by arroyo landforms and oriented toward the Pacific Ocean, Tongva Park brings a much-needed connector between the Civic Center of Santa Monica and the shores that beckon visitors all year long. The Santa Monica mountains in the distance frame the landscape, and the spectacular Moreton Bay Fig tree acts as one of the most impressive focal points in the park.



02 history

This is Ancestral Tongva Land

The land on which Tongva park is constructed is the ancestral land of the indigenous Tongva people who have resided here for thousands of years and continue to reside on this land today. The land has thrived under the stewardship of, and in harmony with, the Tongva people. It has recently been stolen and colonized, bought and sold, mined and extracted, poisoned, bulldozed, filled, developed, re-configured, and re-developed. This devastating cycle continues. Despite all of this, the land remains sacred land, and the Tongva people are still here protecting it.

With the guidance of the Gabrieleno / Tongva Nation, important ancestral sites are being recognized and cared for. The Tongva community is guiding the creation of learning centers and other important projects towards teaching and understanding indigenous existence. Indigenous spaces are becoming more respected, indigenous sacred practices and traditions are becoming centered, and indigenous voices are becoming amplified. However, there is still much, much more to be done. Indigenous existence is, in itself, the heart of the land.





The Coastline Circa 1900

Above we can see the pristine Santa Monica Canyon and coastline as they appeared around 1900, prior to major development. Image courtesy of Water and Power Associates.

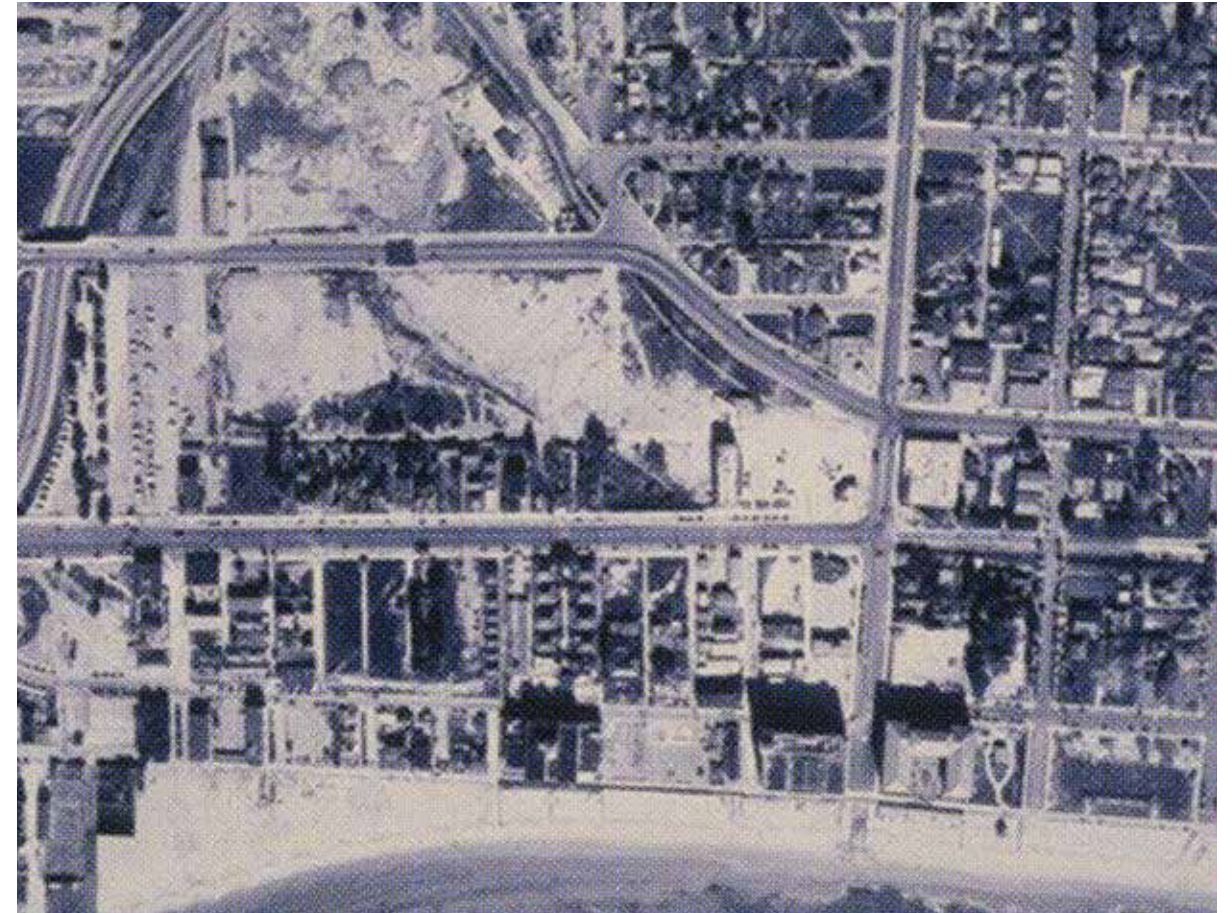


Wetlands at Bollona Creek

This undated but historic photograph shows the ecosystem at Bollona Creek; landforms such as these were inspirational in the design of Tongva Park. Image from the Los Angeles Public Library, Herald-Examiner Collection.

Before the Civic Center

The image to the right shows the site of Tongva park as it appeared in 1937. The Civic Center buildings had not yet been constructed; they would be built two years after this image was taken. Visible is the area from Olympic Boulevard to Santa Monica High School. This image is also previous to the construction of the 10 Freeway. The image is sourced from the City of Santa Monica website and is a photograph by Fairchild Aerial Surveys.



Home of the RAND Corporation

After World War 2, the Rand corporation found its home at 1700 Main Street in Santa Monica, which is located directly on the current site of the park. The image to the right is a hand-tinted photograph from the 1960s of a building on the site, sourced from the RAND Archive.



03 context

The Heart of the City

It is immediately evident that Tongva Park is central to the robust city life of Santa Monica. The site is graced by the tail end of the iconic Route 66, and if you instead arrive by public transit, you'll have no problem at all reaching the site. Neighboring just to the northwest of the park is the 3rd Street Promenade, a major shopping destination for tourists and townspeople alike. The Santa Monica Pier, a major landmark of the city, is a part of the quintessential experience of this place and has no shortage of visitors. Most impressively, certainly, is the Pacific Ocean; she sits in clear view of the park and beckons folks of all ages.

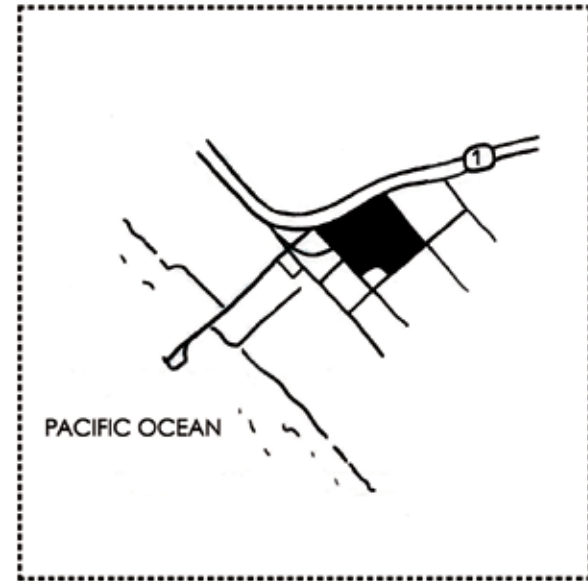
It is important to note that this park solves a major issue for the city. Previous to the park's construction, there was a disconnect from the Civic Center to the ocean. Careful analysis of these contextual elements has allowed the architects to design a place where this important connection is core to the design.



LOCATION MAPS



Regional Map - NTS



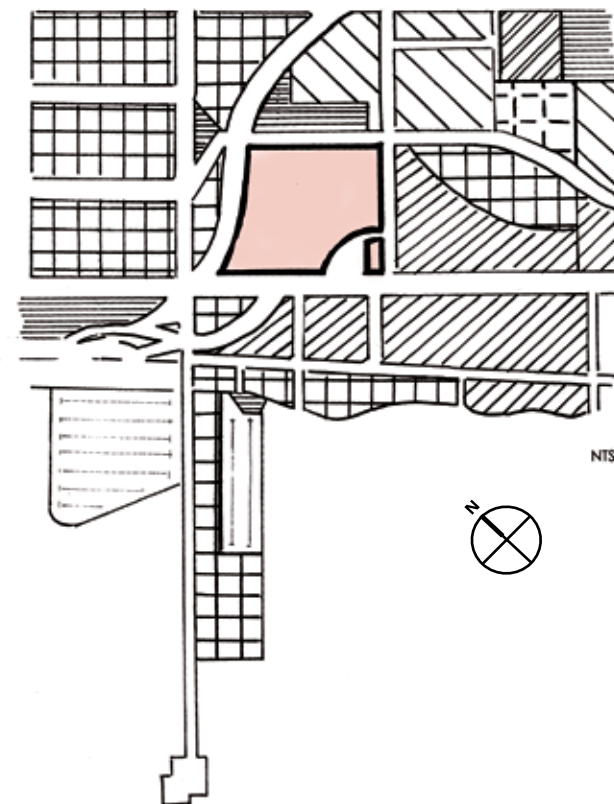
Vicinity Map - NTS



The location maps above demonstrate the proximity of the site to the Pacific Ocean, the Santa Monica Mountains, and the Santa Monica Pier, which extends from the beach to the ocean just southwest of the site.

CONTEXT DIAGRAM

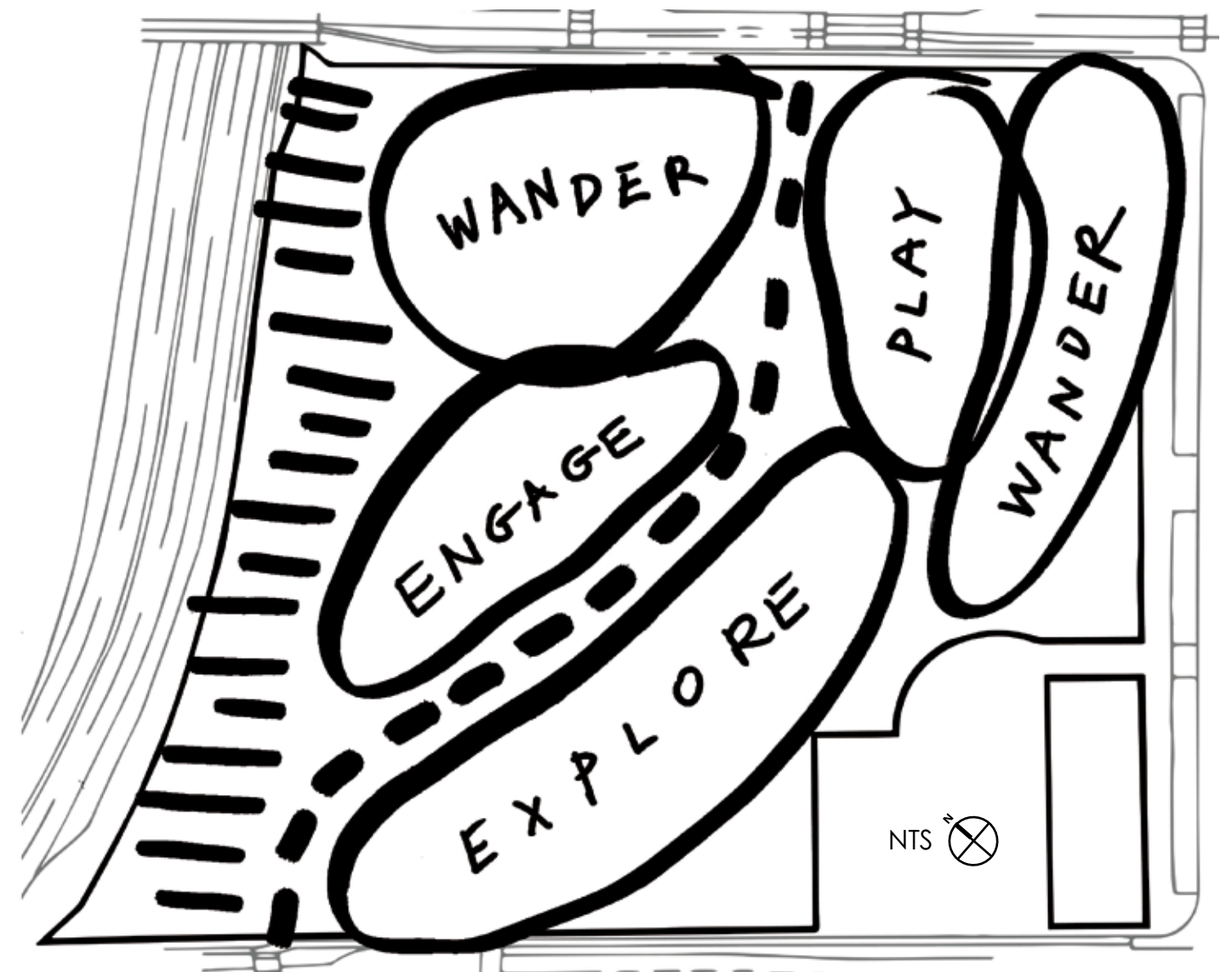
-  PARKS & RECREATION
-  COMMERCIAL
-  RESIDENTIAL
-  MUNICIPAL
-  SCHOOL
-  VACANT LOT



The diagram to the right shows the mixed use of the plots adjacent to the park as well as the location of the municipal civic center buildings in relation to the site.

CONCEPT DIAGRAM

Below, the concept diagram illustrates the thinking behind the organization of the passive and active spaces in the park. The dotted line demonstrates the movement from the Civic Center through the park, curving through the site, and bringing the gaze and stride of visitors towards the Pacific Ocean. There are spaces to wander and explore, much like the flowing movements of the arroyo, through the mounds and curves of the park. Visitors can play in the playground and water park zones; engagement happens where there is an amphitheater with a spacious lawn. The highway to the left of the diagram may produce unwanted noise, represented by the parallel lines. The design of the site would have to carefully consider this impact in order to focus energy and intent within the park.



04 analysis

Movement by Design

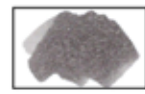


Inspired by the sweeping coastal landscapes of California, the essential concept for the design of Tongva Park captures the fluid, ebbing motion of the arroyos of the native landscape. The park brings visitors on a journey via wandering stream-like paths; the constructed arroyo mimics the flow of a natural one as it sweeps seaward from the Civic Center and meanders through the park. The flow branches off to many smaller paths on its journey, touching on several water features throughout the park, and ultimately ending at the Pacific Ocean.

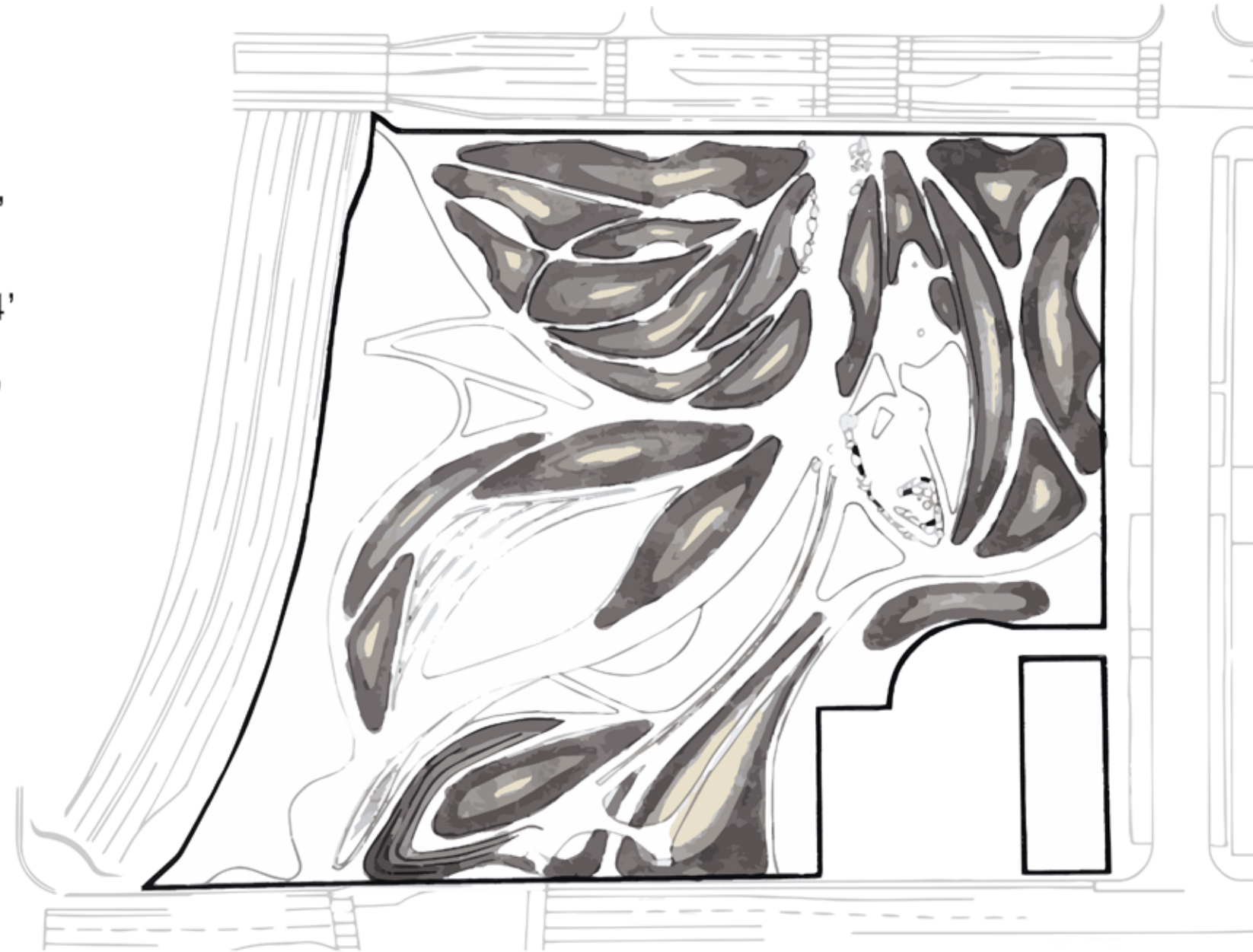
A deeper analysis of the of the site and its usage demonstrates how visitors are given opportunities to wander, to play, to engage with the built landscape, to gaze at the impressive vistas of the natural landscape, and to explore the more detailed, smaller enclosures throughout the park.


Maps indicating vehicular and pedestrian circulation are included as part of the site analysis, as well as the topography and the tree canopy of the site.



LEGEND

-  + 1' - 2'
-  + 3' - 4'
-  + 5 - 6'



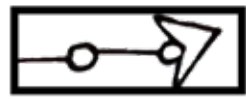
 1" = 100' - 0"

TOPOGRAPHY

LEGEND



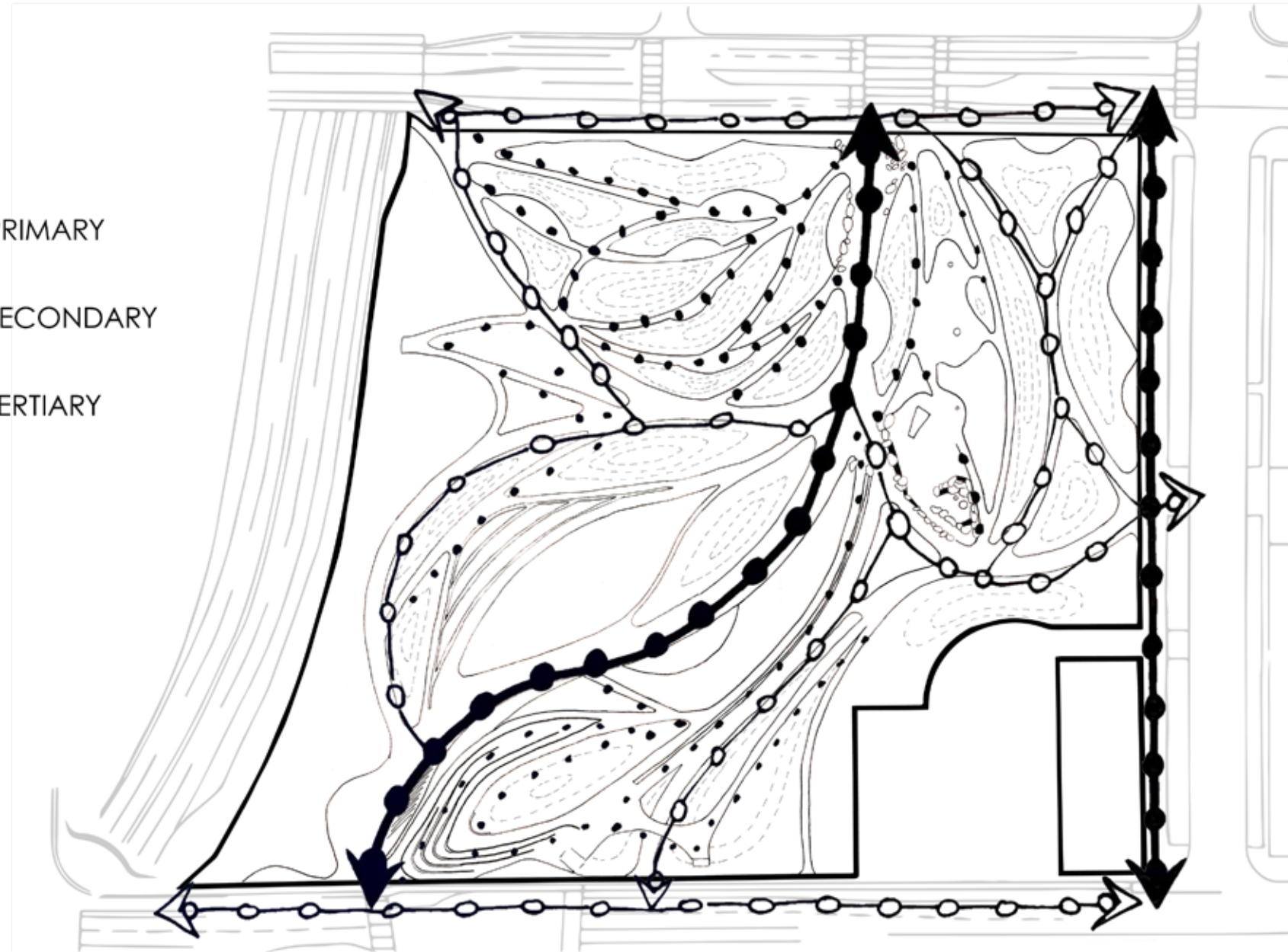
PRIMARY



SECONDARY







TERTIARY

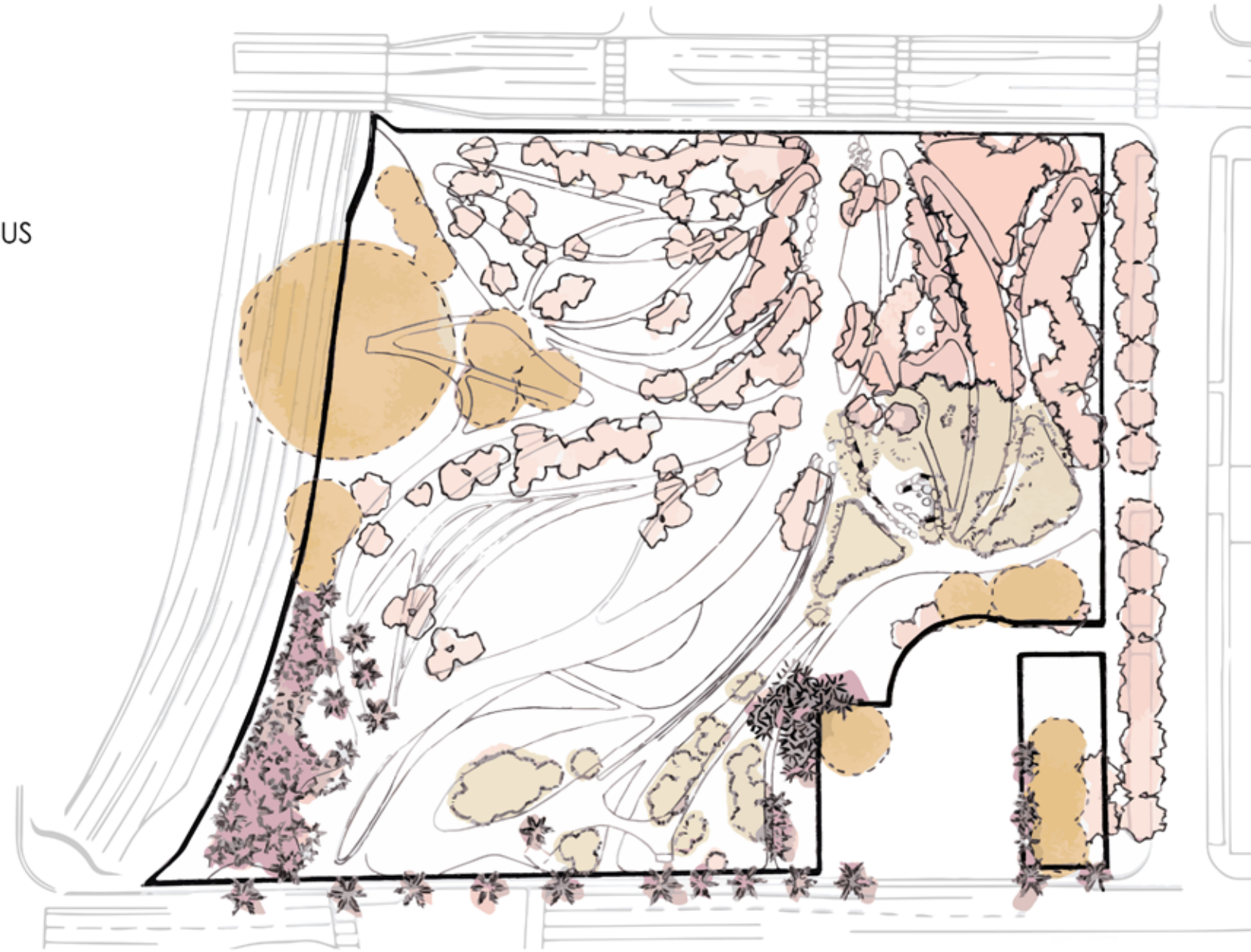


1" = 100' - 0"

PEDESTRIAN CIRCULATION

LEGEND

-  DECIDUOUS
-  PINE
-  PALM
-  EXISTING



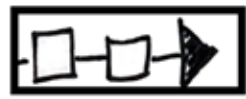
1" = 100' - 0"

TREE CANOPY

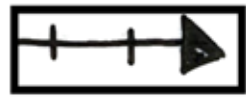
LEGEND



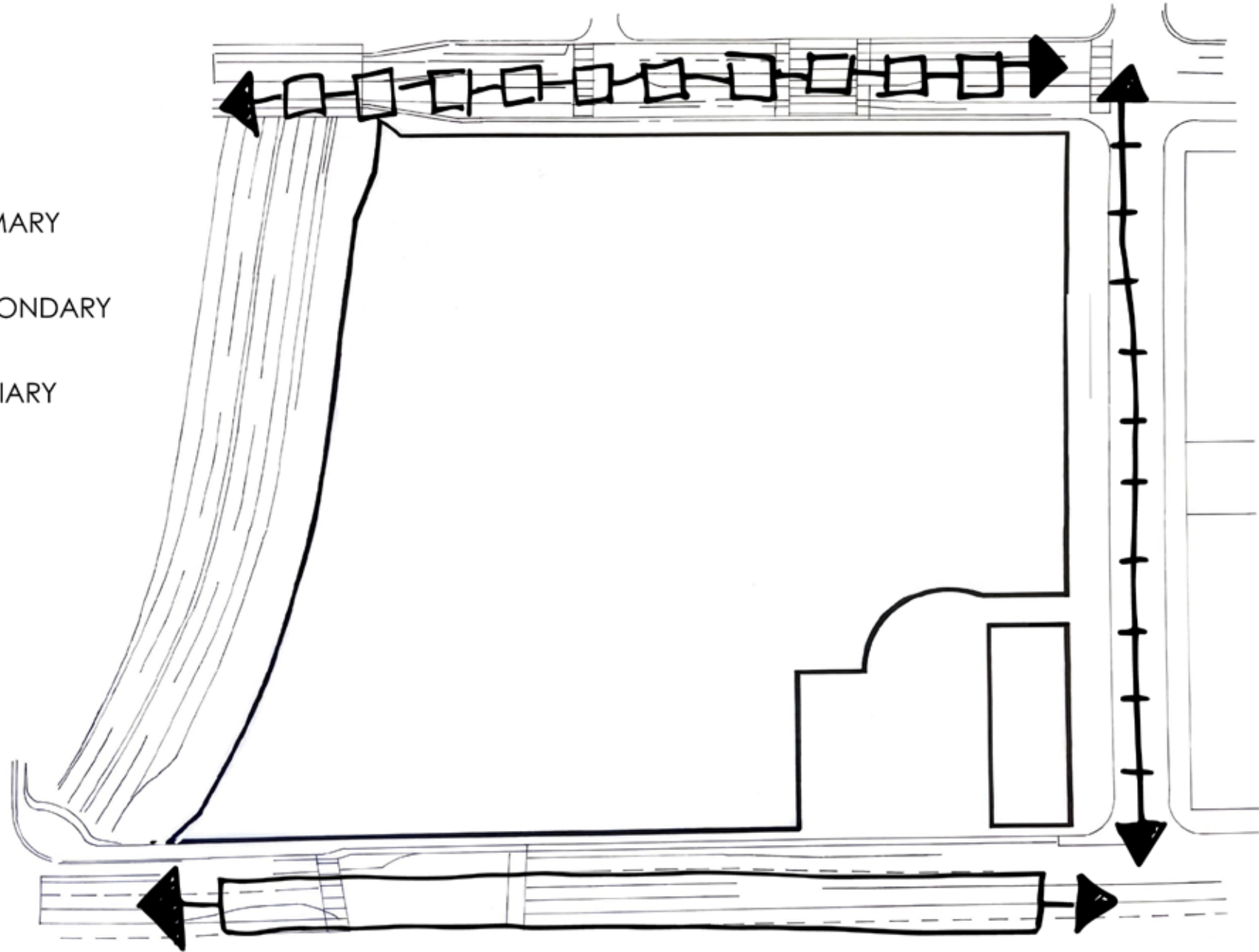
PRIMARY



SECONDARY




TERTIARY



⊗ 1" = 100' - 0"

VEHICULAR CIRCULATION



***“For while we have our eyes on the future, history has its eyes on us.”
— Amanda Gorman***

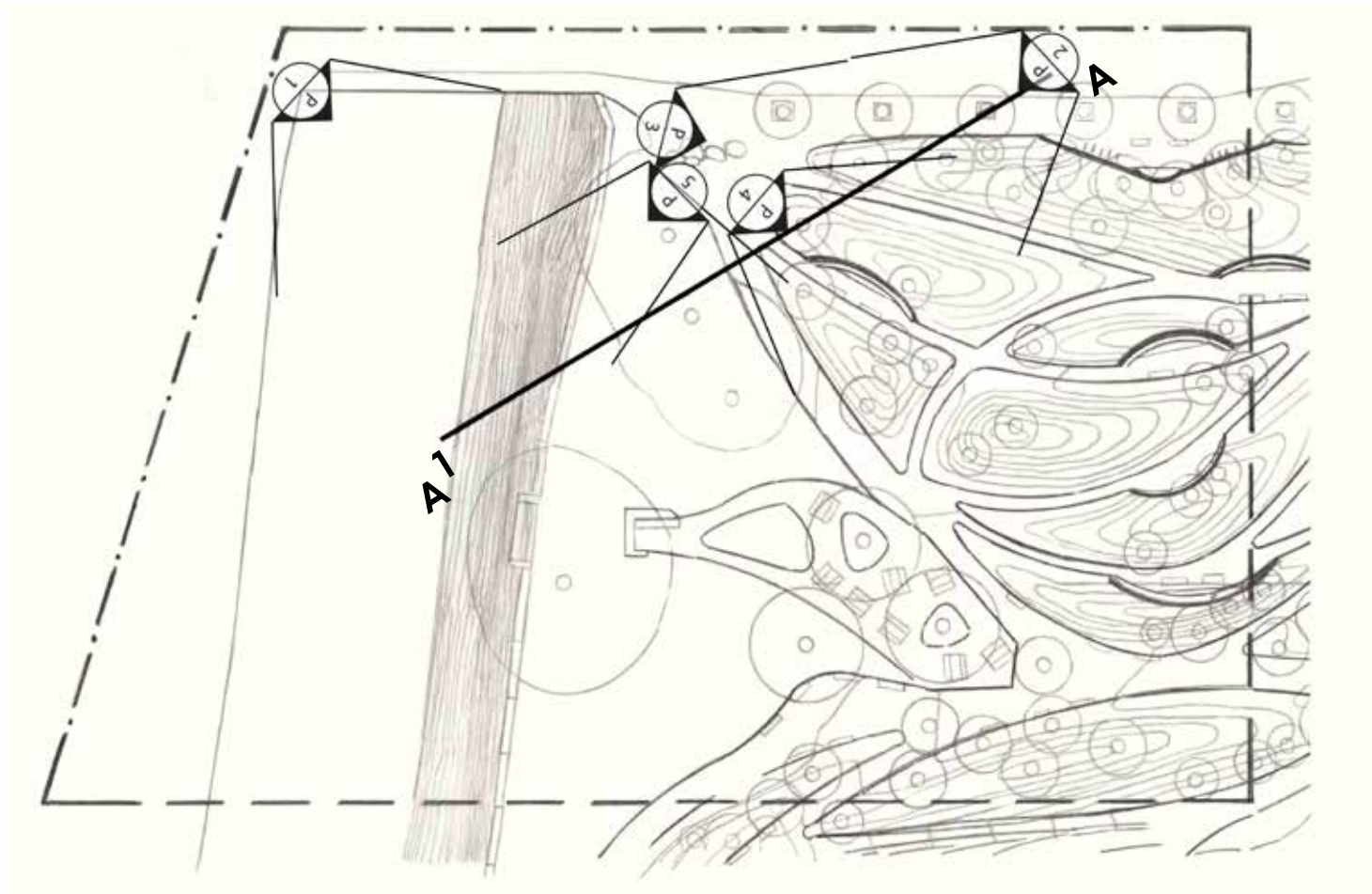
05 concept

Site Illustrations, Sections, and Perspectives

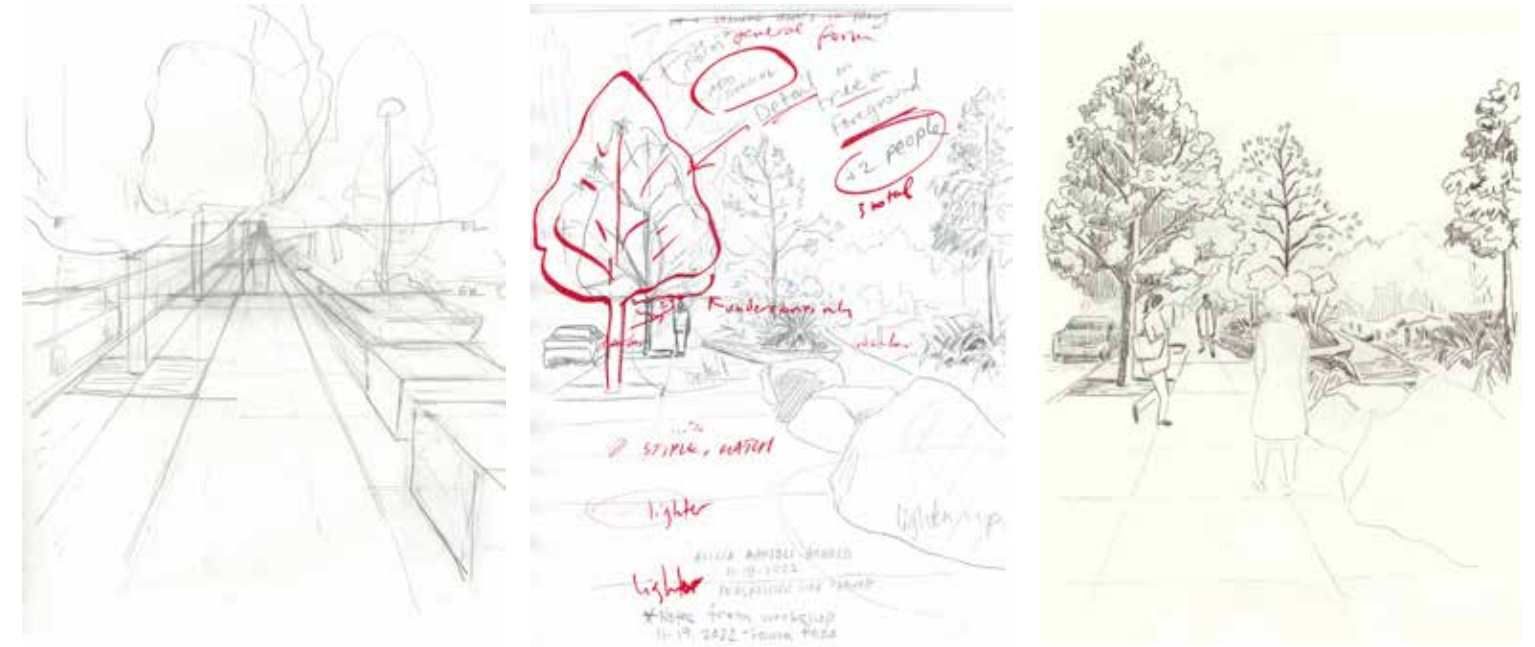
The images on the following pages present conceptual ideas for the park's overall development and plan. These graphics include key site features, an enlargement of a portion of the park, perspectives from several vantage points, and a section elevation. I am including worksheets and iterations of these exercises as a way to demonstrate my understanding of the process of Landscape Architecture as I've explored it so far.

SITE PLAN





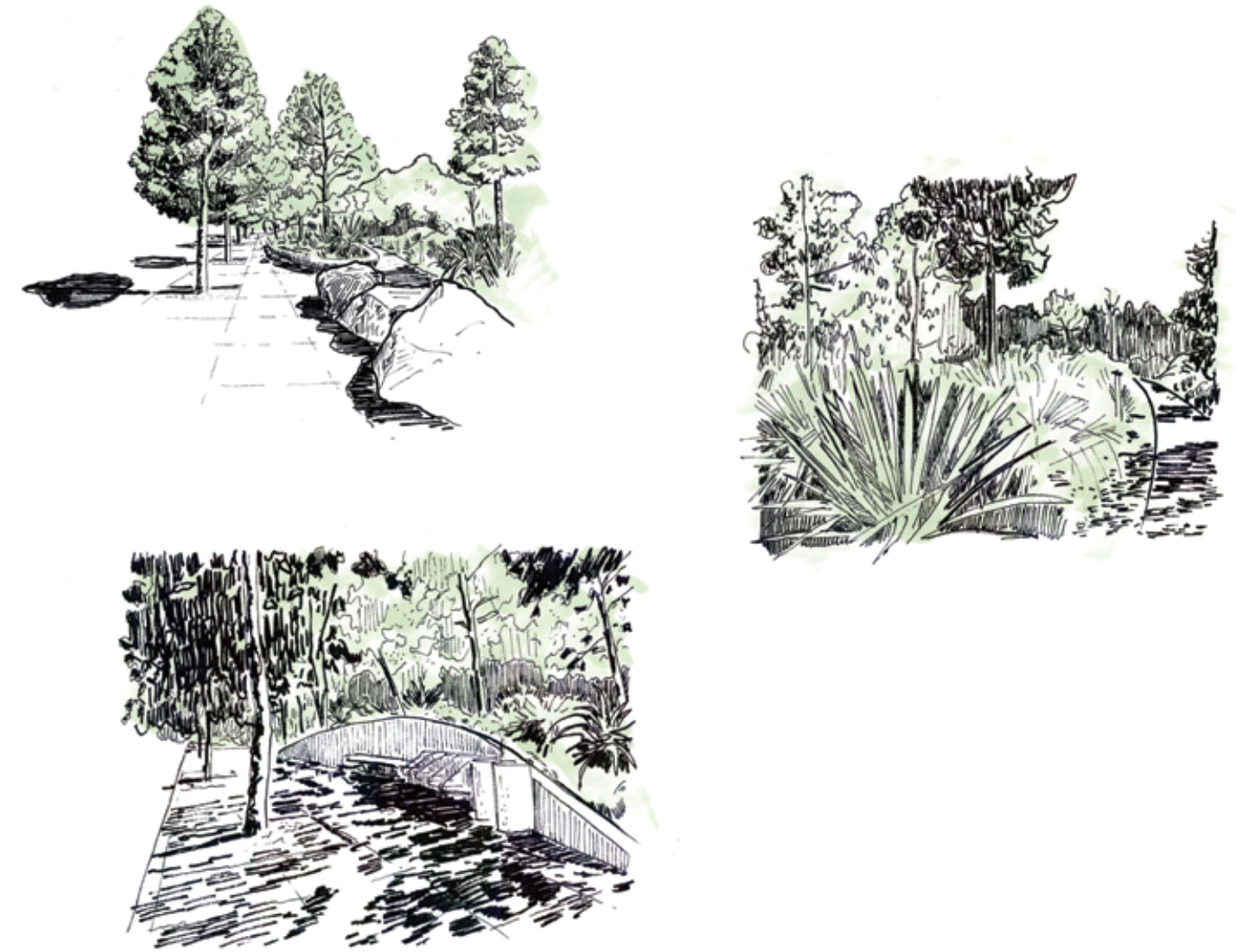
ABOVE: Enlargement of the site plan indicating A-A' section line and station points

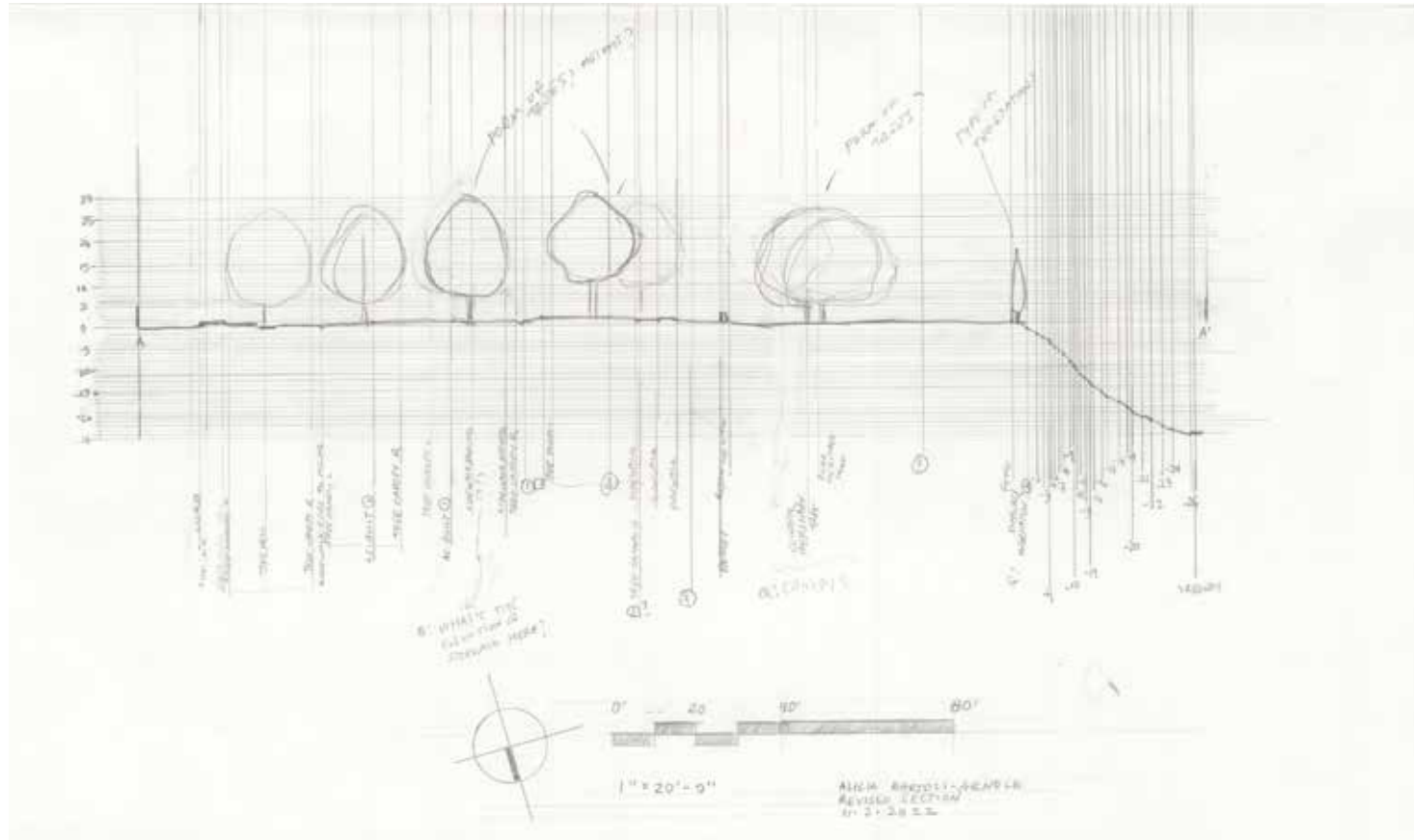


ABOVE: Development of perspective drawings in pencil

BELOW: Refining perspective drawings in pen and marker

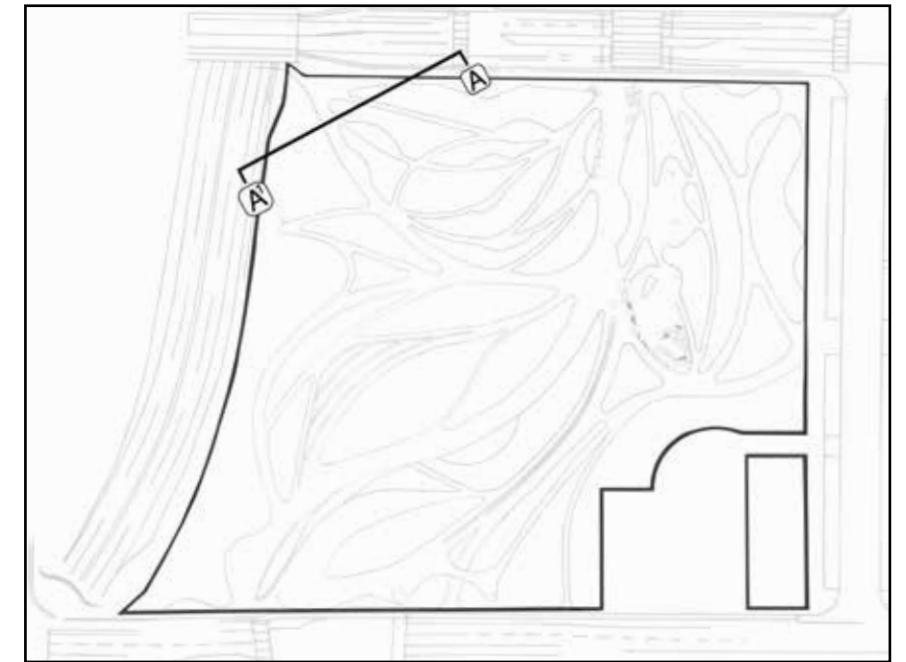
BELOW: On-site perspective photographs from station points oriented towards the section line





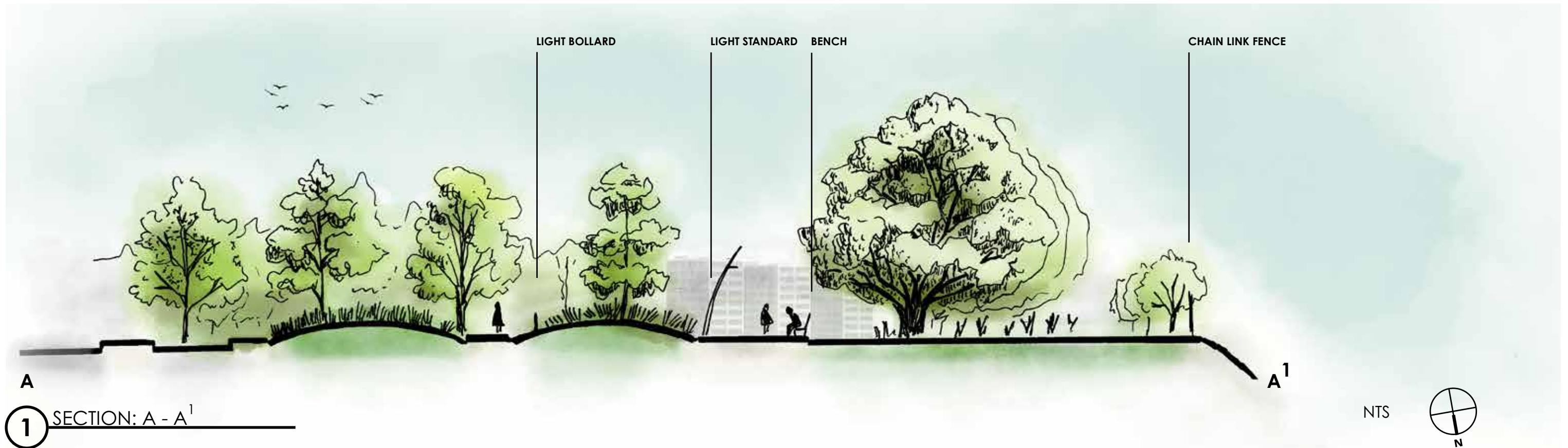
ABOVE: Development of section elevation

SECTION ELEVATION



ABOVE: A key map showing the section line and enlargement area

BELOW: Revised section elevation A-A¹

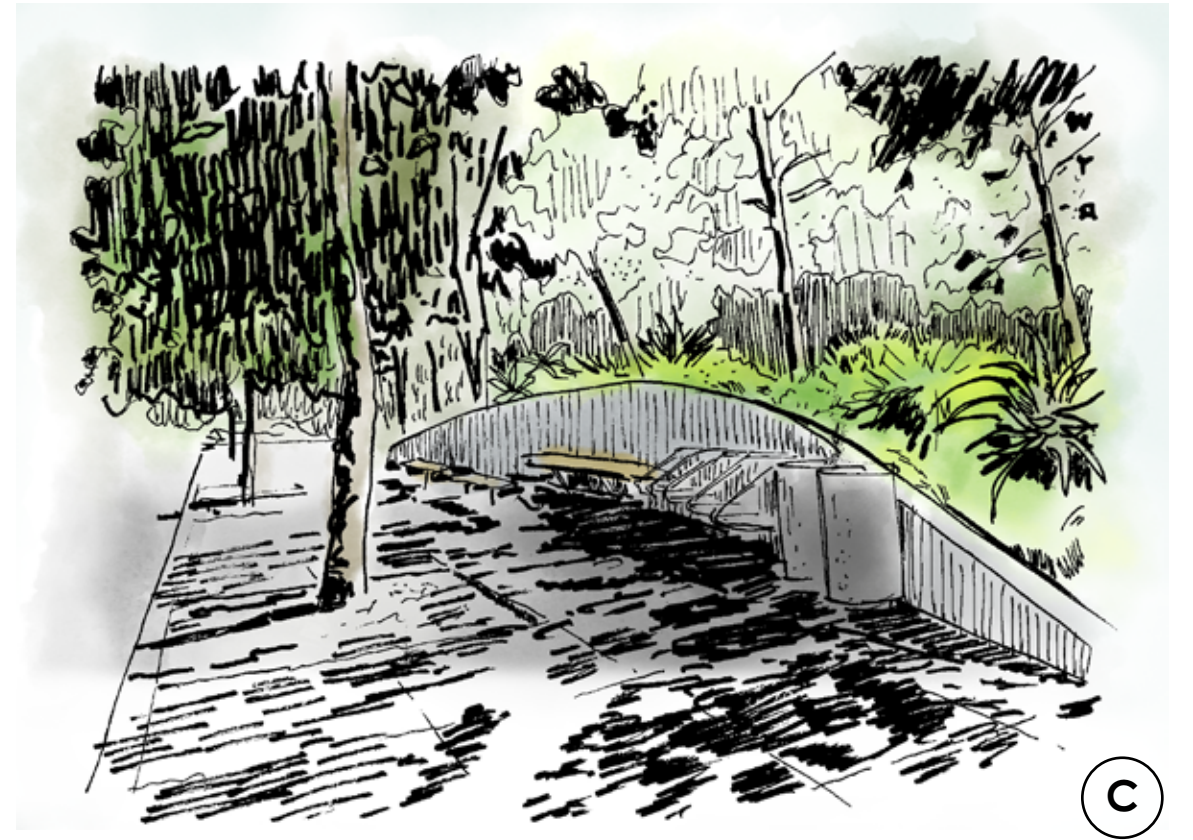


1 SECTION: A - A¹

PERSPECTIVES



A



C



B

ENLARGEMENT



DECORATIVE ROCKS

FEATURE TREE *PLUMERIA RUBRA*

BENCH SEATING

FEATURE TREE *CEIBA SPECIOSA*

'THREE AMIGOS' HERITAGE TREES

PICNIC AREA



ABOVE: A key map showing the enlargement area

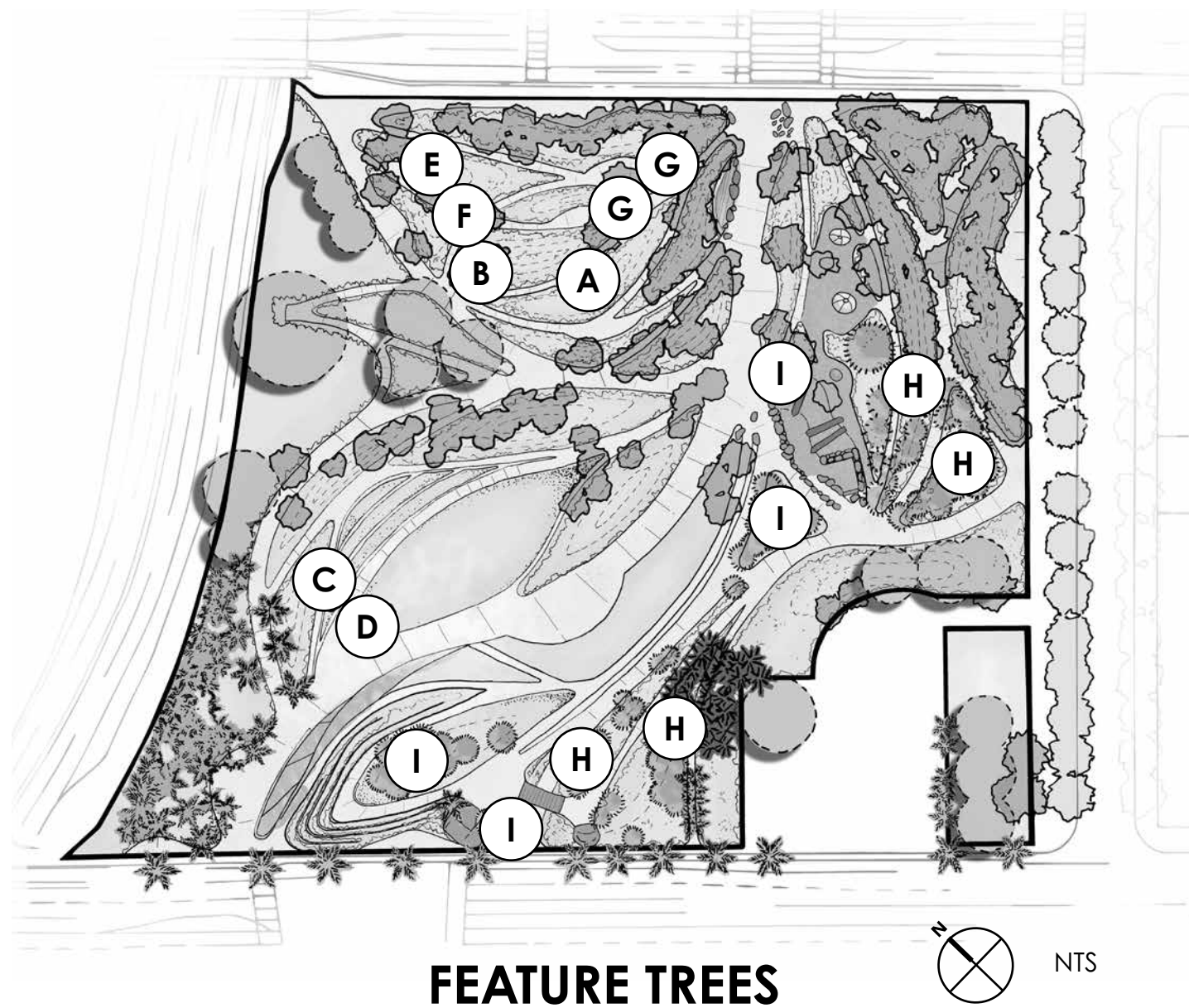
06 plant palette

Feature Tree Mix

The plantings of Tongva Park take inspiration from those both native to Southern California and plantings that are adaptive to the climate. Especially spectacular are the feature trees, with bold color and unique blooms that are certain to delight wanderers and observers throughout the seasons.

To the left is the site map with indications that correspond to a palette of feature trees present in the park. To the right are images that demonstrate each tree, as well as a close-up image that offers a more detailed perspective.

One image that I found to be extremely interesting is the one to the right. "Morty," the resident heritage Moreton Bay Fig Tree, is being transported to his new location within the park. The process worked, and Morty still thrives today. Image courtesy Field Operations.



FEATURE TREES



A *Calodendrum Capense* - Cape Chestnut



D *Tabebuia Impetiginosa* - Pink Trumpet Tree



G *Erythrina Coralloides* - Naked Coral Tree



B *Ceiba Speciosa* - Floss Silk Tree



E *Plumeria Rubra* - Frangipani



H *Pinus Halepensis* - Aleppo Pine



C *Arbutus Marina* - Strawberry Tree



F *Parkinsonia Aculeata* - Desert Museum



I *Pinus Pinea* - Umbrella Pine

07 summary

Reflections on Process

Musing over my learnings that have emerged from these first courses in Landscape Architecture, the most resonant idea I take with me is that this practice is all about *process*. I have learned that to start a project, I've got to jump right into the deep murky waters and grapple with it - not just dip a toe in. Like deep waters, the unknowns can be a bit unsettling and intimidating, but at the same time, they can be thrilling and exhilarating! I am learning that I need to trust that this process will bring me to a place where I want to be with my work. As in many creative endeavors, the resulting design truly emerges through the ins and outs of the means by which it's explored.

While I may be a beginner in this discipline, there are many transferable methods from my practices as an artist, teacher, and musician. I can tap into the thinking and making that I am accustomed to in order to work through projects and find my own style and voice. As a teacher, I've long taught my students to annotate their process drawings and explorations in order to capture their thinking. I am enjoying doing this in my own work, as you can see to the right. I've taught my students to push their thinking through exploration of various approaches and physical materials; I am thoroughly enjoying trying new-to-me pens and papers, digital design methods, tools, markers, and pencils and I am enjoying using familiar materials in new-to-me ways. I remain convinced that this career change is the right one for me!

acknowledgments

Thank You!

Many thanks to all of my professors throughout my experience in this program! Especially for this project I'd like to thank David Squires, Rebecca Schwaner, and Laura Razo for their guidance and patience over the past three quarters to help make this project come to fruition.

I would also like to thank my wonderful landscape architecture student peers! I could not imagine this journey without your support, good humor, and collective knowledge and experiences. Thank you Sarah Koff, Chris Ritter, Eddy Tong, Linda Hsi, and Adam Sirak for sticking together with me and making this experience a truly phenomenal one.

The Guardian - quote, p.2

Fluidity Design - image, p. 2

James Corner Field Operations - reference information throughout the booklet

Water and Power Associates - image, p. 5

Los Angeles Public Library, Herald-Examiner Collection - image, p. 5

Fairchild Aerial Surveys- image, p. 5

RAND Archive - image, p. 5

<https://www.gabrieleno-nsn.us/timeline> - *Tongva Logo*, p. 6

<https://realtimetraveller.com/route-66-end-of-the-trail-day-16/>- image, p. 8

<https://www.californiabeaches.com/beach/little-sur-river-beach/>- image, p. 10

Johnathan Kaufman / UnSplash - image p. 15

NPR.org - quote, p. 15

Field Operations - image, p. 22

Wikipedia - *Calodendrum Capense* image, p. 23

San Diego Zoo - *Calodendrum Capense* image, p. 23

Pacific Horticulture - *Ceiba Speciosa* - both images, p. 23

Waterwise Garden Planner - *Arbutus Marina* image, p. 23

Stanford University - *Arbutus Marina* image, p. 23

The Original Garden - *Tabebuia Impetiginosa* image, p. 23

Robert Perry - *Tabebuia Impetiginosa* image, p. 23

CABI digital library- *Plumeria Rubra* - both images, p. 23

Southwest Desert Flora - *Parkinsonia Aculeata* - both images, p. 23

Santa Barbara Beautiful - *Erythrina Coralloides* image, p. 23

Wikimedia Commons - image, p. 23

Bartlett Tree Experts - *Pinus Halepensis* image, p. 23

Sacramento Tree Foundation - *Pinus Halepensis* image, p. 23

Wikimedia Commons - *Pinus Pinea* image, p. 23

The Original Garden- *Pinus Pinea* image, p. 23