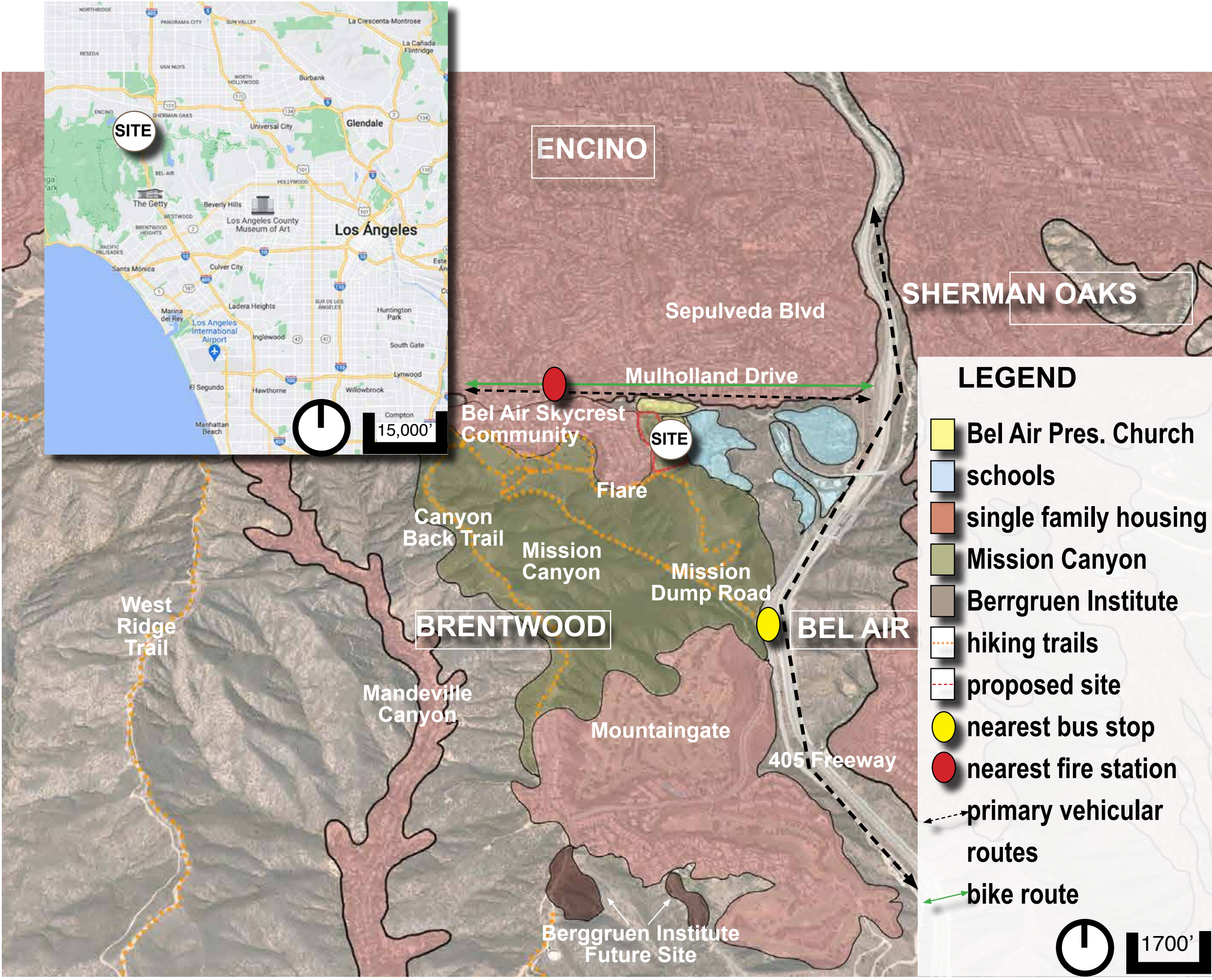


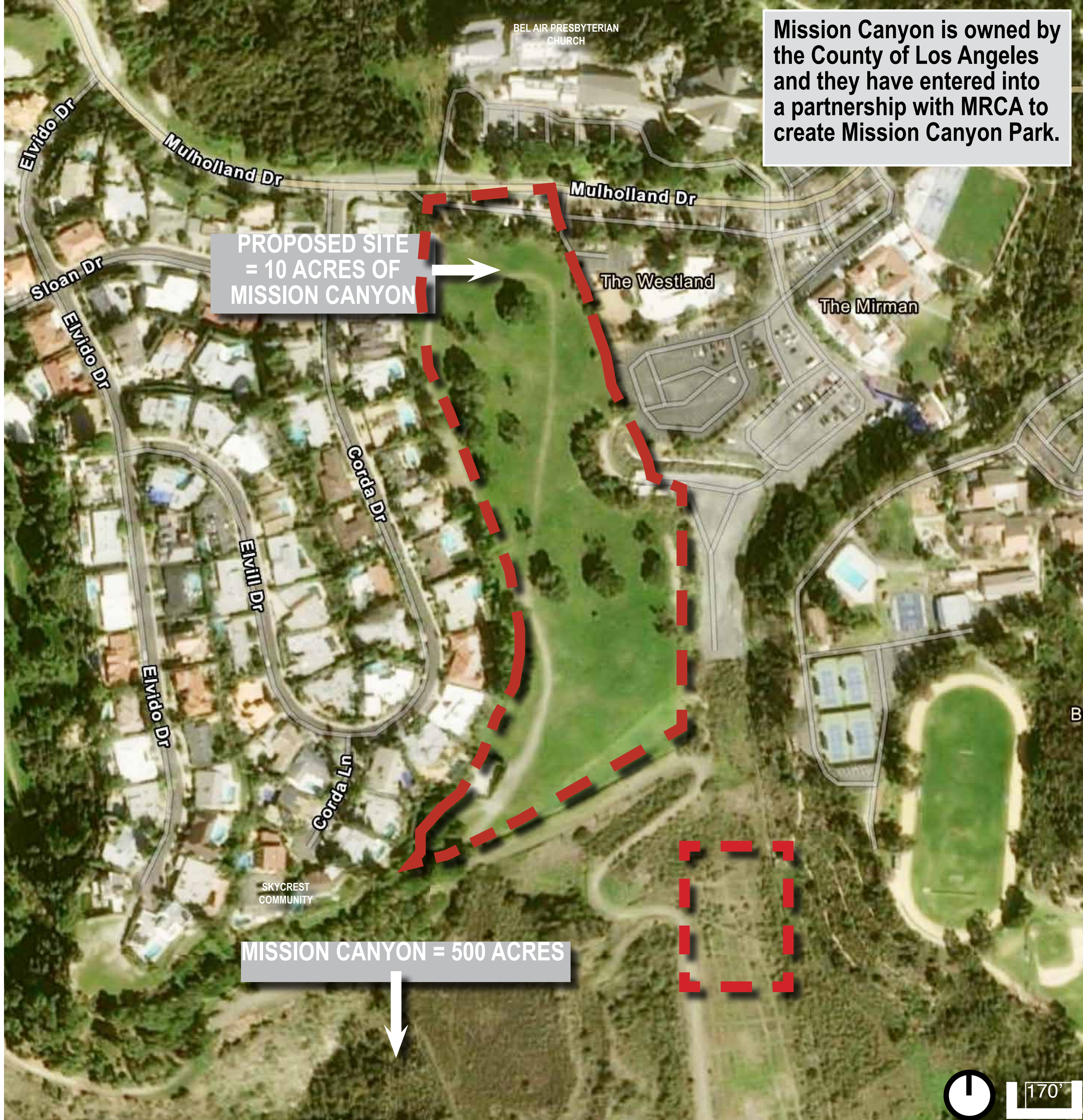
PROJECT STATEMENT

Mission Canyon exhibits common characteristics of a former landfill: excessive methane gas in the ground, settlement, and poor air quality. The site will be a model for land reclamation and sustainability by incorporating **REGENERATIVE** design, to promote ecological **RESILIENCY**, and provide **RECREATION**, and **RESOURCE** opportunities.

CONTEXT



SITE LOCATION



RECLAIMING MISSION CANYON
PROJECT GOALS AND OBJECTIVES

1. site safety with REGENERATIVE design

- reduce green house gas
- improve soil quality
- safe gas wells
- plan for settlement from soil compaction

2. improve ecological RESILIENCY for wildlife and community

- stormwater management
- drought tolerant/native plants
- fire safe habitat
- heat island reduction

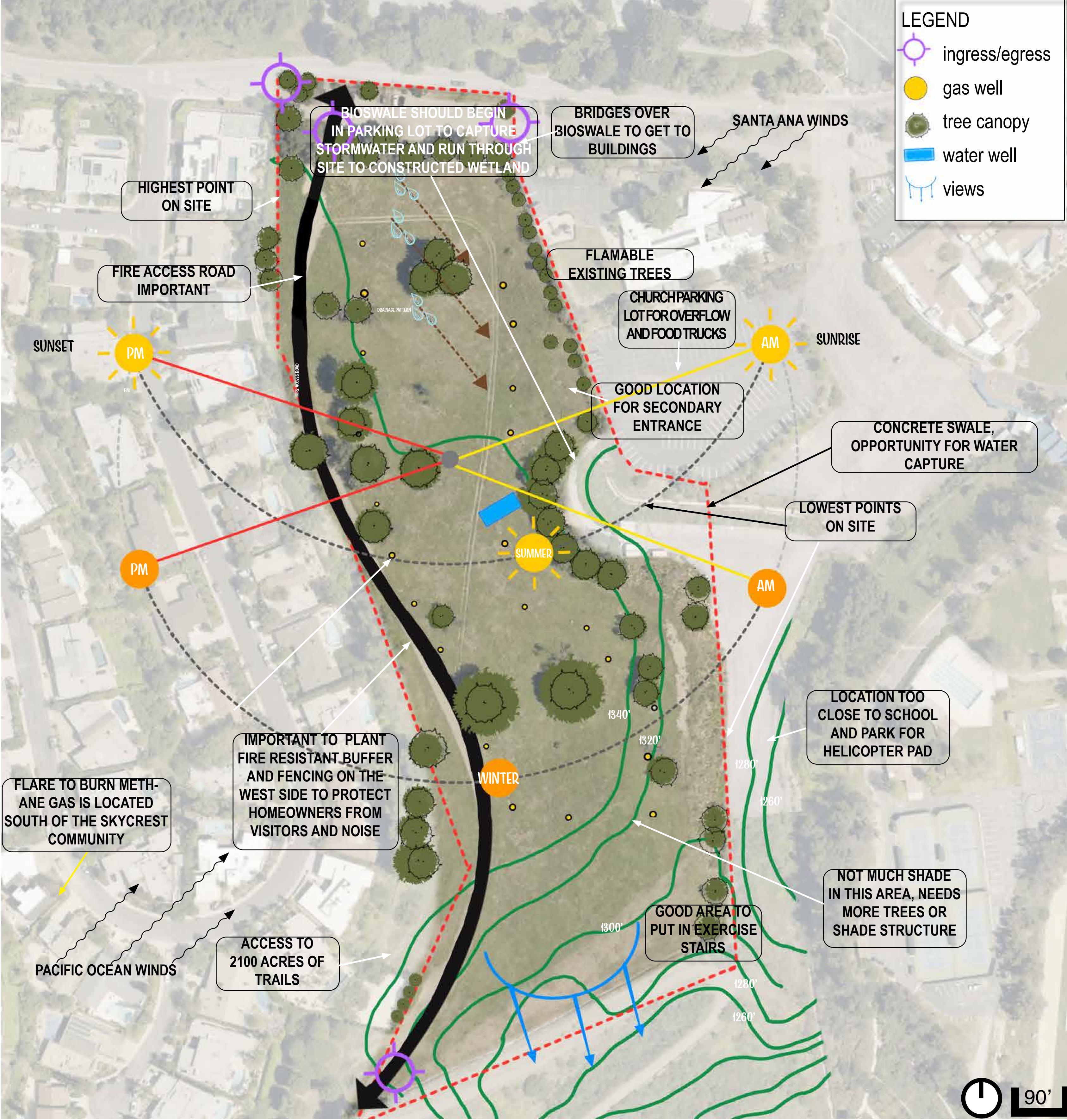
3. RECREATION for the community

- hiking/biking paths
- community green space
- engagement with nature
- education

4.RESOURCE for the community

- ranger residence
- fire fighting resources
- helipad for fire department
- educational signage

SITE ANALYSIS



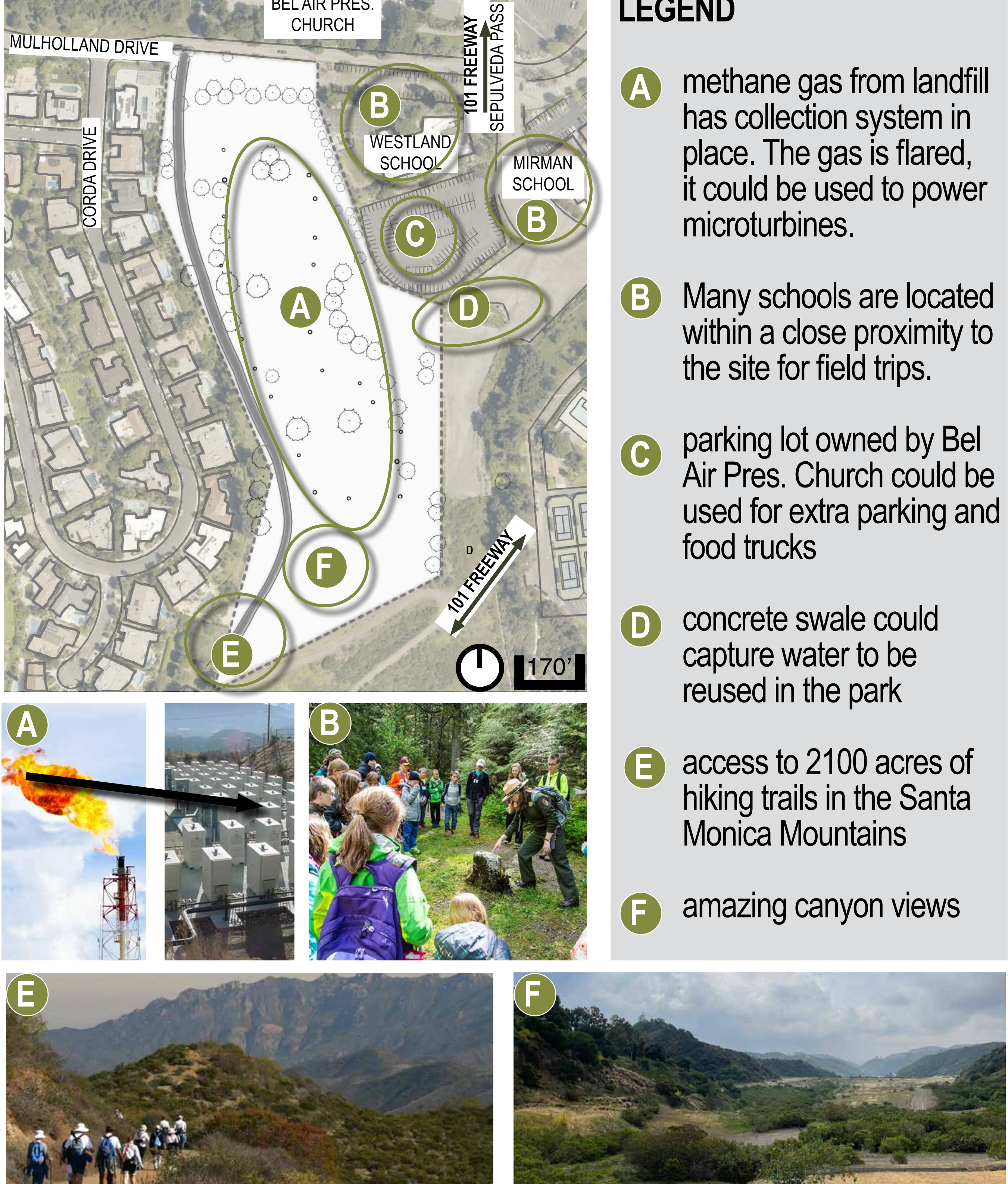
SITE HISTORY

1950s - Site Purchased by Los Angeles County
1950 - 1980 - Site used as a dump for the City of Los Angeles for non-hazardous waste
1960s - County agreed to leave land "in a condition usable for park and recreational purposes" when no longer needed as a trash disposal site.
late 1960s-early 1970s - Site stopped accepting trash.
1980 - Site was covered with three feet of clean earth that was compacted to accommodate park and recreational use.
1980s - LA County considered lease or sale of the land to a third party for a golf course, housing project, or land trade with a luxury developer.
1990 - Court ruling caused developer Ray Watt to abandon his plans for a land swap.
2014 - County funded MRCA to develop designs to turn the 500 acres of decommissioned landfill site into the Mission Canyon Park Project.

SITE CONSTRAINTS

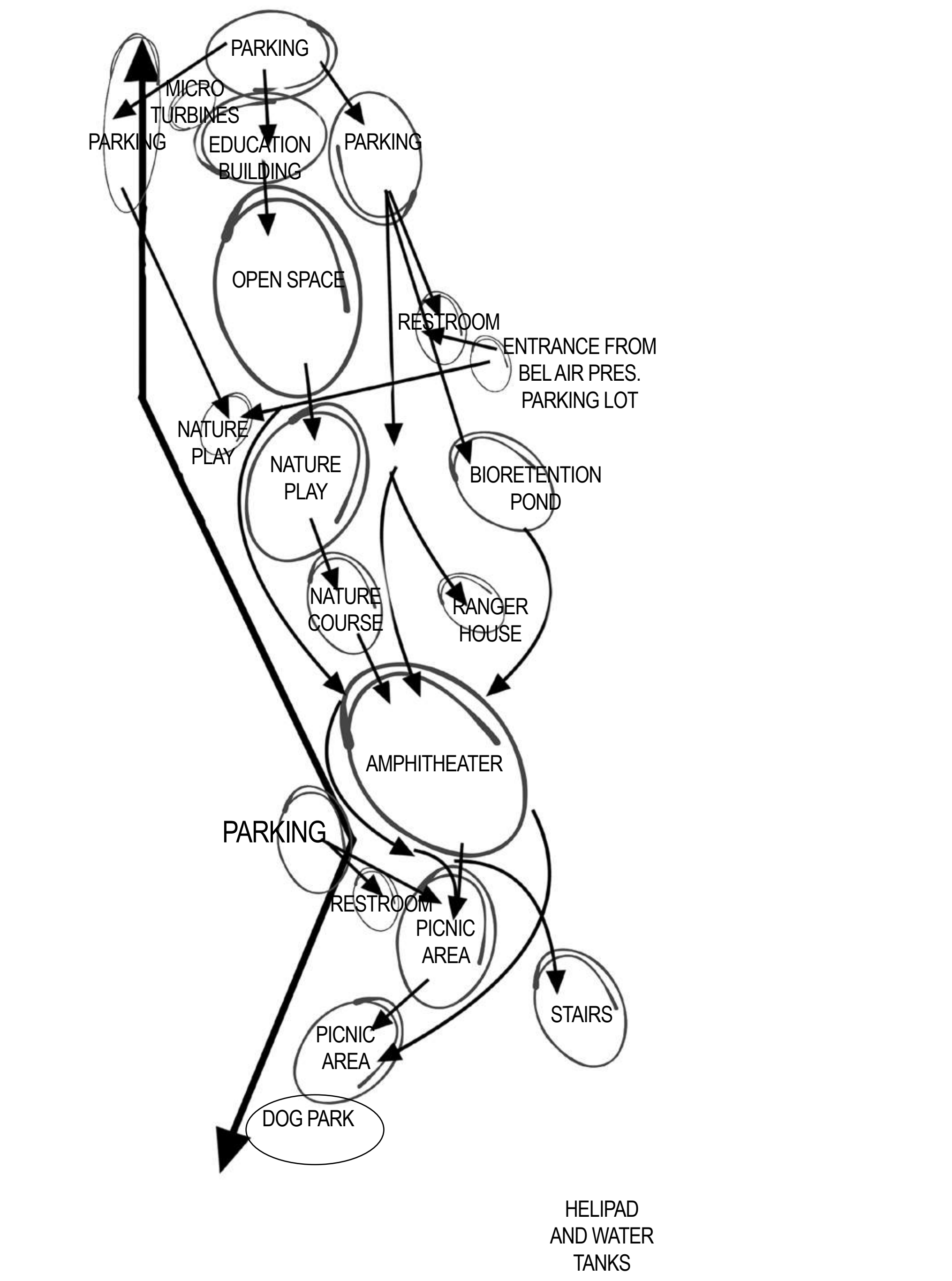


SITE OPPORTUNITIES

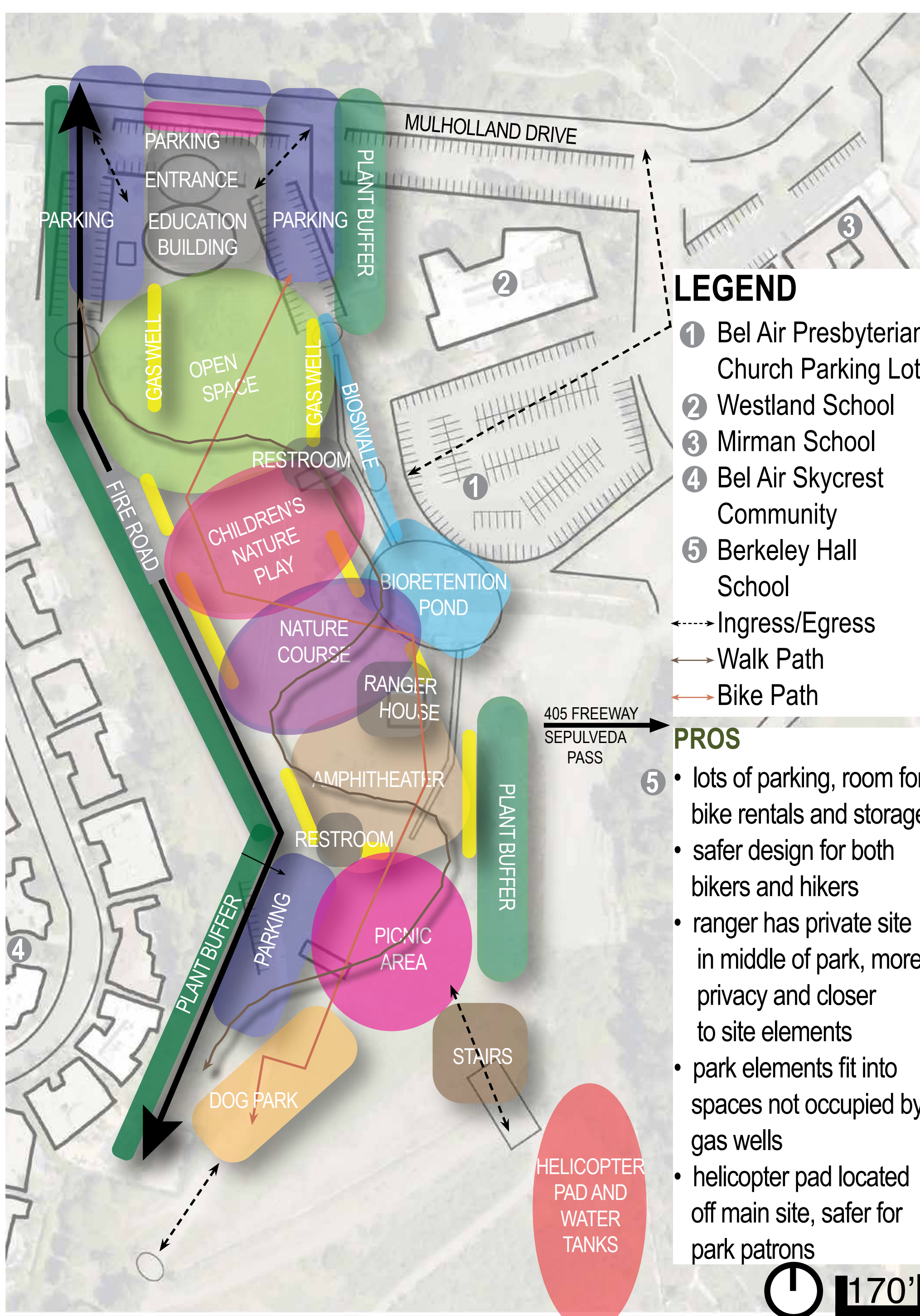


CONCEPTUAL DESIGN

FLOW CHART



CONCEPT DIAGRAM



MASTER PLAN



LEGEND

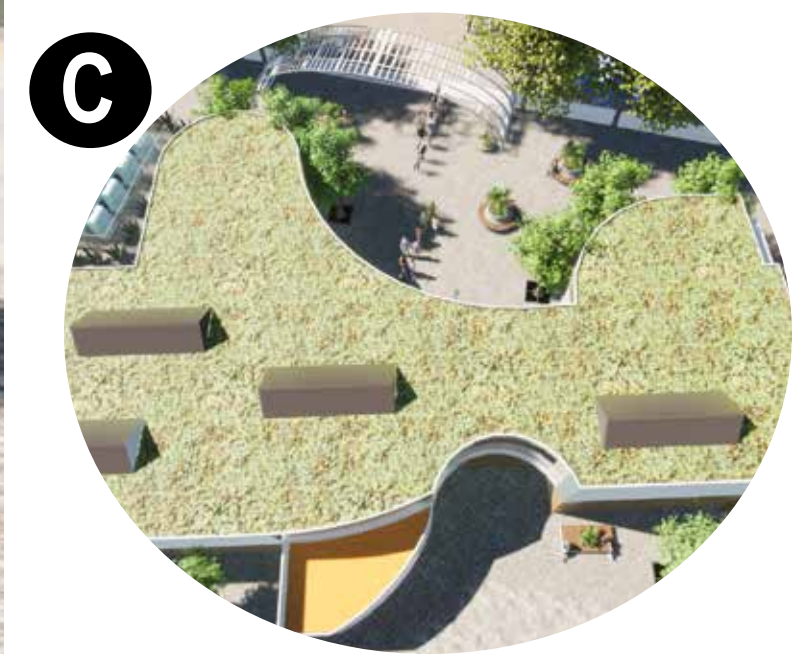
- A1 parking lot - 36 spaces
- A2 parking lot - 26 spaces
- A3 parking lot - 16 spaces
- A4 parking lot - 14 spaces
- A5 solar powered bicycle rental
- B entrance/exit structure
- C education building with green roof
- D microturbine area
- E community open space
- F children's nature play area
- G older children's nature play area
- H adult exercise nature course
- I bioretention pond and bioswales
- J ranger house
- K gas well
- L amphitheater
- M restroom
- N picnic area
- O exercise stairs
- P fire road
- Q bike path
- R walking path
- S dog park
- T opuntia garden
- U helipad and water tanks



PARKING LOTS



EDUCATION BUILDING



OPEN SPACE



NATURE PLAY



NATURE COURSE



BIORETENION POND AND BIOSWALES



RANGER HOUSE





AMPHITHEATER



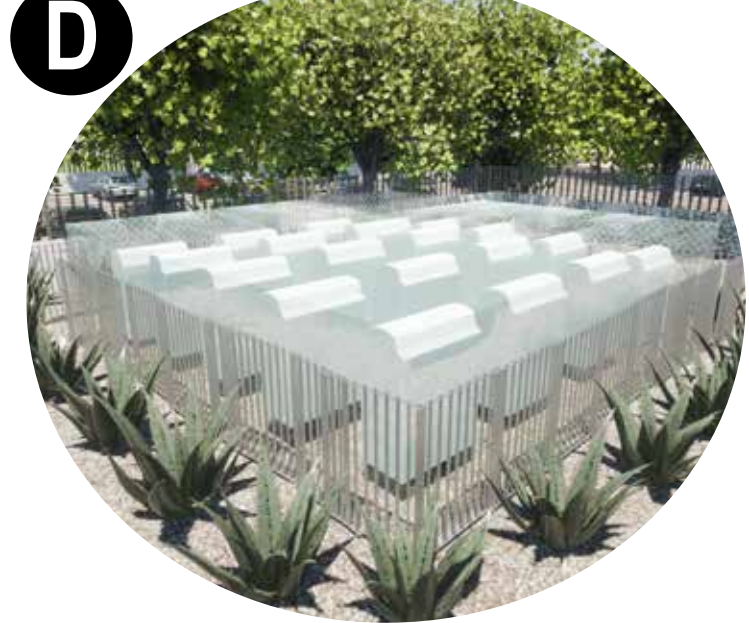
PICNIC AREA AND RESTROOM



DOG PARK



GAS WELLS AND MICROTURBINES



EXERCISE STAIRS



HELIPAD AND WATER TANKS

