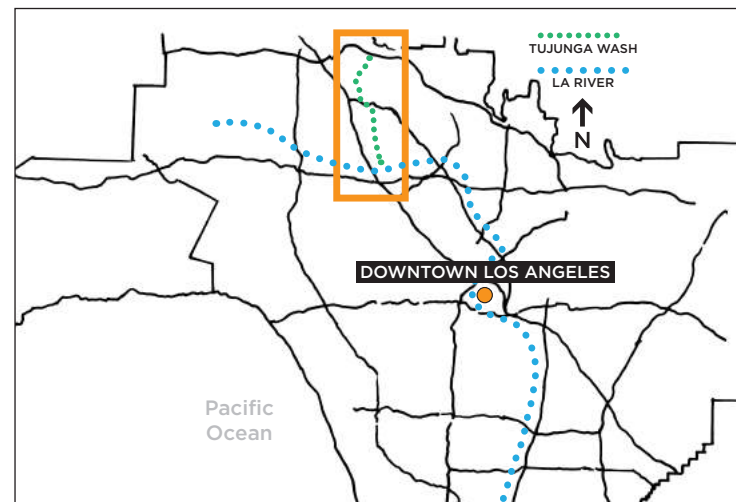




**Johnny Carson Park** is one of the largest and most utilized neighborhood parks within the City of Burbank. Throughout the park's history, the site has lost and gained several acres. Currently, the park stands at 17.60 acres and approximately 8.75 acres of the park are City-owned. The park also provides extensive local, regional, environmental and social benefits.

In the 1930's as the City of Burbank grew, engineers created concrete channels to control the periodic flooding from the **Little Tujunga Wash** which destroyed local life and property. A system of piping systems and channels collected stormwater and directed it into the Los Angeles River. The creek in this park functions primarily as a flood control channel.

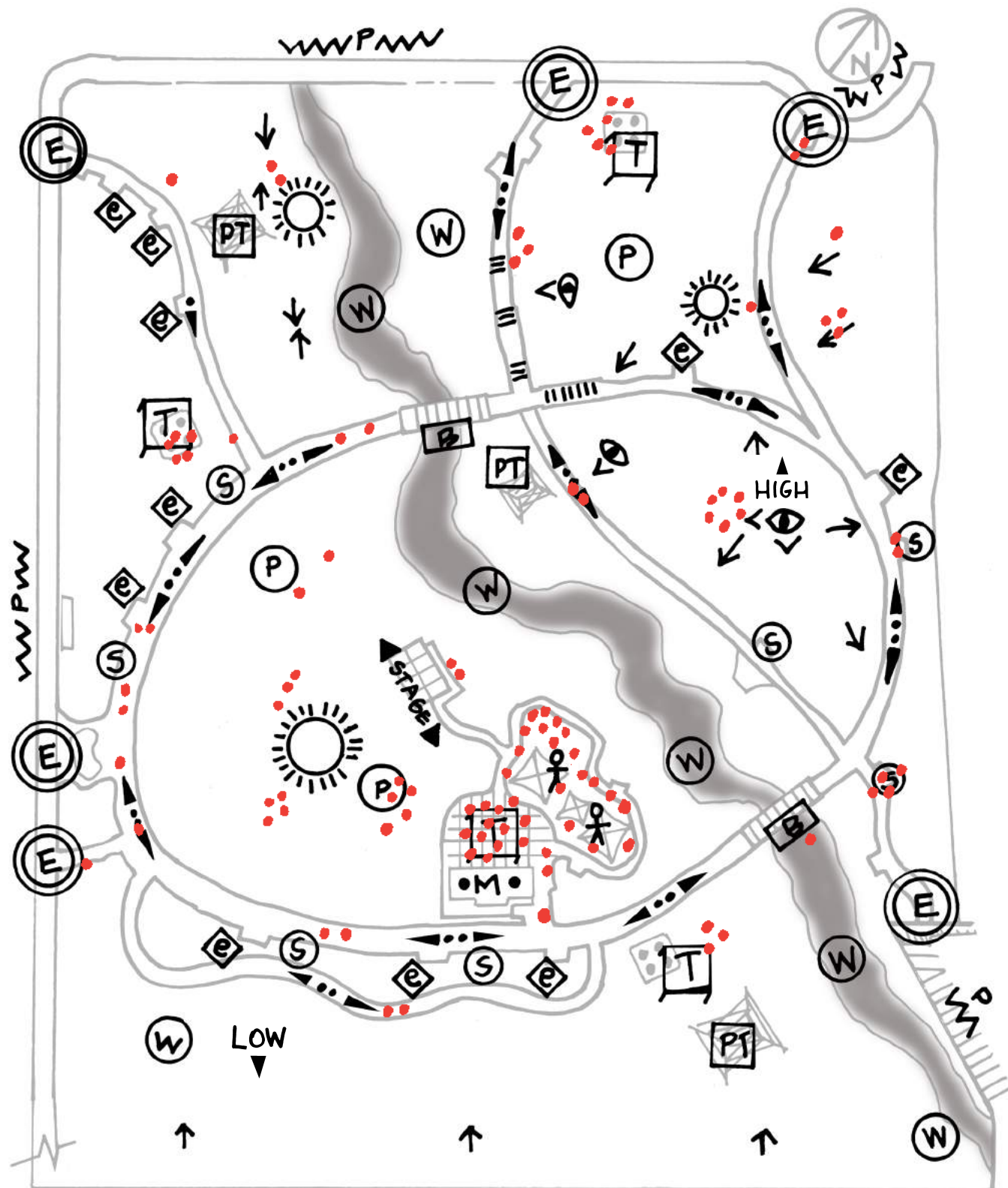
In order to operate and maintain the park's infrastructure in a way that balances the sustainability goals of the City Council, in 2015 Burbank underwent a complete redesign of the interior core of the park. AHBE Landscape Architects was the project's landscape architect and prime consultant. The work focused on the restoration of the Little Tujunga Wash Creek, which flows into the LA River and traverses the park. AHBE conducted numerous community workshops to solicit residents' feedback on the design. The creek is now a destination with enhanced habitat, recreational access, and water quality, as well as new walking paths with parcourse equipment and improved accessibility, bridges crossing the creek, picnic areas, new LED lighting, an expanded children's play area, new acoustic concert stage, California native plant palette, and reclaimed water.



## GENERAL NOTES

- Well-defined edges
- Easy access, no fencing around perimeter except at freeway side
- Street parking on perimeter, additional weekend parking lot at neighboring high school (southeast corner). Parents with strollers use that lot for safer access.
- Food trucks line up on north side (Alameda) during lunch time for office worker access.
- Urban, with a wild/native landscaped creek channel
- Well-used, busy park
- Full sun, large play field area for sports, gathering
- Elevated stage area for show and activity monitoring
- Rehabilitation, in 2015, resulted in newer trees and infrastructure, creek is growing in with planted natives and water channel diverts water to the LA River
- Paths are filled with active walkers, joggers, ADA accessibility is good and used easily by wheelchairs.
- Picnic tables are semi-shaded and full of diners.
- Children are active in the playground area, swings, jungle gyms and jumpy structures, despite COVID restrictions, all children were wearing masks.
- Families were meeting friends on the large play field.
- A mix of people (gender-wise), but more young than old. Lots of women together with their children at the play area. Men engaged with children on the play fields.
- No organized sports at this time (Pre-COVID I have seen teams playing soccer and baseball during the week nights).
- At the northeast corner, at the top of the slopes, more private engagement, solitary people reading, lovers on blankets, older couples picnicking on the grass.
- Children were trying to approach the very muddy creek channel as parents watched and made sure they didn't get too close.
- Active walkers (monitoring their "steps") and joggers circling the "loop".
- Exercise stations were not being utilized
- Freeway noise is almost deafening at south end
- No noise from power towers, people seemed to ignore them
- Dogs were on leashes, very few dog walkers
- Group activity was situated near the restroom/table area.
- AA group meeting at the top of the slope with the best view
- No homeless tenting

AREA OF STUDY

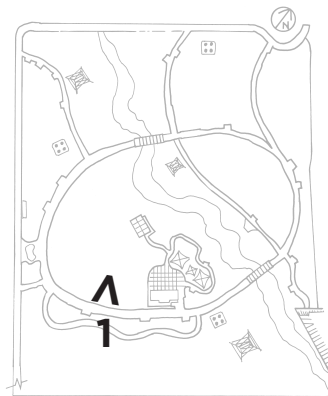


LEGEND

- |  |                       |  |                     |
|--|-----------------------|--|---------------------|
|  | BRIDGE                |  | POWER TOWER         |
|  | ENTRY                 |  | PATHS               |
|  | EXERCISE STATION      |  | BENCH SEATING       |
|  | SINGLE PERSON         |  | SLOPE DIRECTION     |
|  | GROUPS                |  | STAGE               |
|  | HIGHEST ELEVATION     |  | STEPS               |
|  | KID PLAY AREA         |  | FULL SUN AREA       |
|  | LOWEST ELEVATION      |  | TABLES WITH SEATING |
|  | MAINTENANCE/RESTROOMS |  | VIEWS               |
|  | PARKING               |  | WATER/SWALE         |
|  | PLAY/SPORTS FIELD     |  |                     |



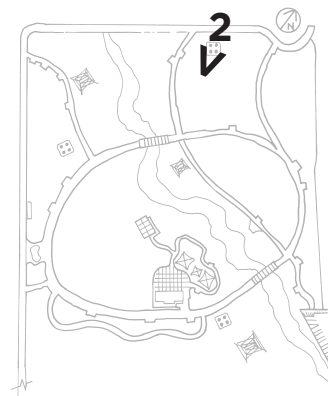
OBSERVATION ANALYSIS 1



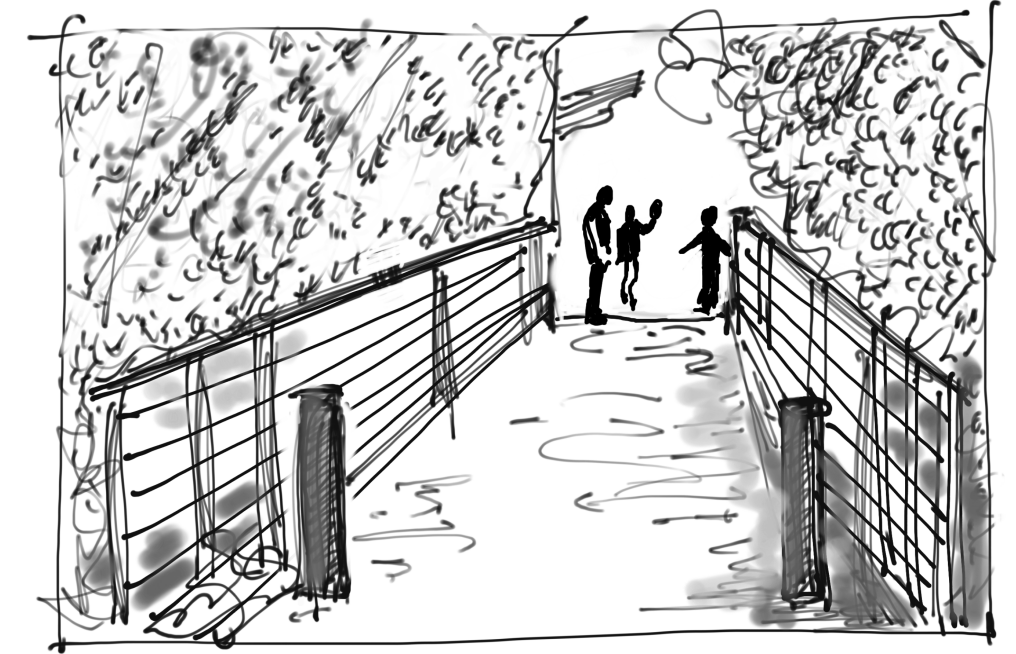
- Group of women gathering to celebrate a birthday or event that involves cupcakes
- They are in the sports field area, off from the center of the play field, in the full sun
- They also have fast food lunches
- All are masked and socially distant
- All are wearing sports attire
- Sports equipment is nearby (soccer ball)
- Most look late 20's, one is younger, maybe 14
- Relaxed, laughing, like they all know each other well
- Active area
- Grass is full, but mowed for ease in playing



OBSERVATION ANALYSIS 2



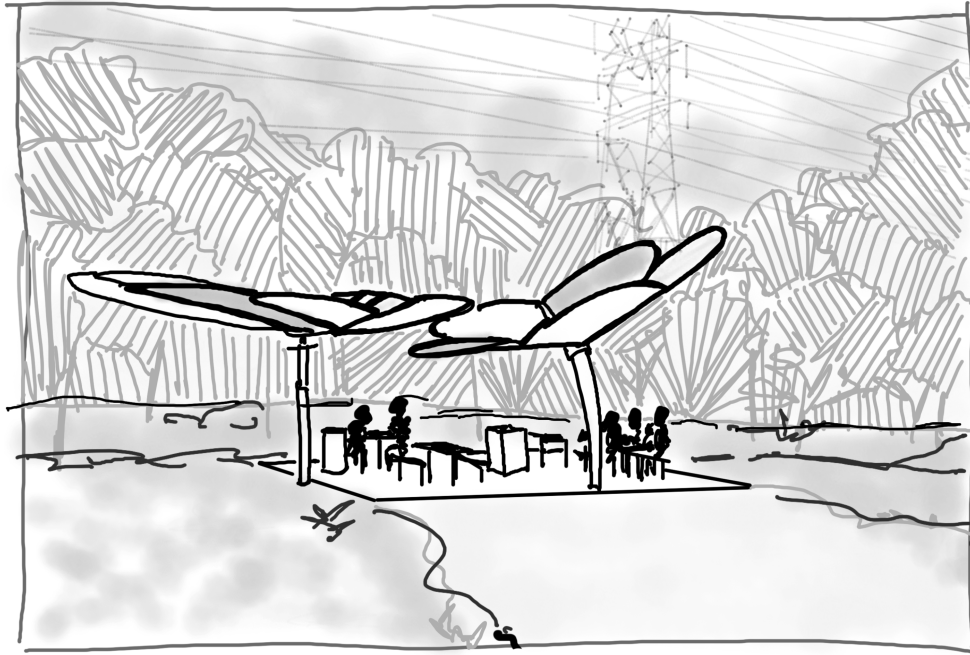
- Older gentleman, 70's, reading the sport's page
- Brought his own folding chair
- Dressed warmly for the weather
- Sitting in the shade of the upper field northeast near entrance off Parkside Drive
- Brought his own coffee and snacks
- Enjoying the solitude of this section of the park
- He is near easy-to-get-to parking, off the main streets
- This area has a side view of the whole creek and lower part of the park, but is away from the freeway traffic noise
- Passive area
- Grass is full, but mowed for ease in walking



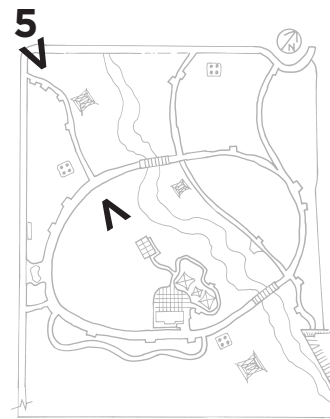
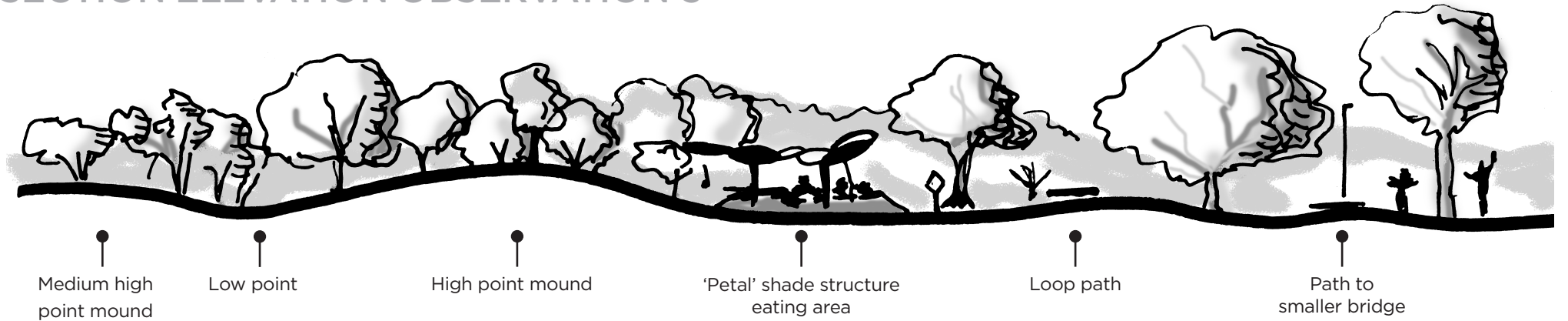
OBSERVATION ANALYSIS 3



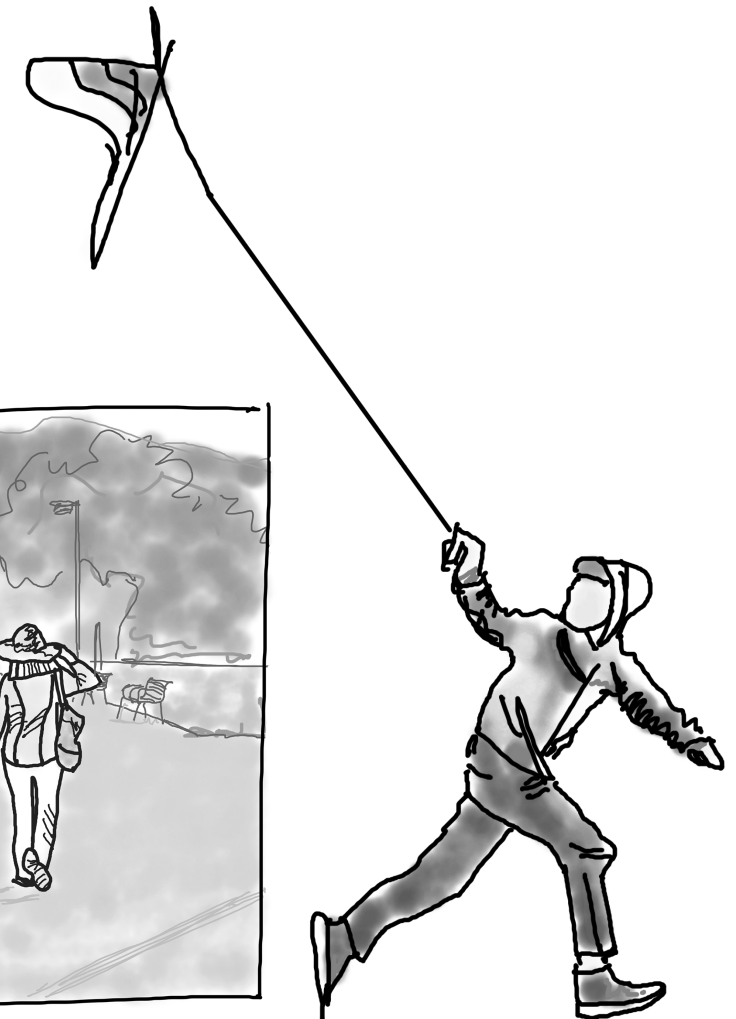
- Father and two sons (ages between 8 and 12) getting ready to cross the creek's main bridge
- Older son is carrying some kind of paddle or net
- Everyone looks happy
- Younger son is trying to get father's attention
- Bridge is a very active area, completely hidden by overgrown willows in the creek bed
- Siderails are almost too high for children to see the creek below
- They gave a feeling that they have been here before and are familiar with this section of the park
- Sound of traffic and the main playground in the distance



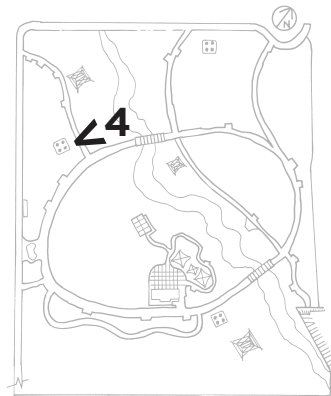
SECTION ELEVATION OBSERVATION 5



- Area is shady and less occupied than the flat sunny part of the park
- Terrain is undulating grassy slopes and wide DG paths
- Access to smaller creek bridge here, which is almost hidden because of creek overgrowth
- Main path goes to the park loop, DG path is very smooth and ADA accessible
- Small eating area with overhanging shade “petals” and a cement pad with built in tables and benches
- People seem happy to be out in the sunshine after the recent wind storms
- Young children walk near the trees to get a view of the water while parents hover to make sure they don't get into the muddy banks
- A boy is learning to fly a kite; his mother runs behind him
- A nice mix of young trees (*Ginkgo biloba*, *Platanus racemosa*, *Salix lasiolepis*, *Jacaranda mimosifolia* and *Umbellularia californica*) are complemented with mature *Platanus Racemosa* and *Quercus agrifolia*.
- People gather in couples and groups, area is very safe



OBSERVATION ANALYSIS 4



- Two youngish families (30's?) eating under petal shade cover
- One has a baby in a stroller
- They don't seem to know each other
- All are under the shade petals, on the cement pad
- Area is about 70 feet from the creek edge, no view of the water. A path separates the tables from the creek overgrowth
- This is the quietest shade-covered eating area. Can still hear freeway noise.
- This area is elevated from the main playfield, good view of the center of the park
- Back view is of upslopes, rolling hilled grass
- Near street parking on Bob Hope Drive
- Grass is a bit worn in this area (too much shade)

