

PROJECT STATEMENT

An area of Griffith Park presents an opportunity to engage **PEOPLE** of the surrounding community, in what was once a thriving nursery for **PLANTS** for the city of Los Angeles, with the **PURPOSE** of education, protection of resources and community interaction.



GOALS

PEOPLE

Provide engagement with the community, improve amenities, impart education and training



PLANTS

Re-establish the plant propagation infrastructure, add walk-through gardens



PURPOSE

Establish better working conditions. Protect the natural resources. Implement surface remediation.



HISTORY

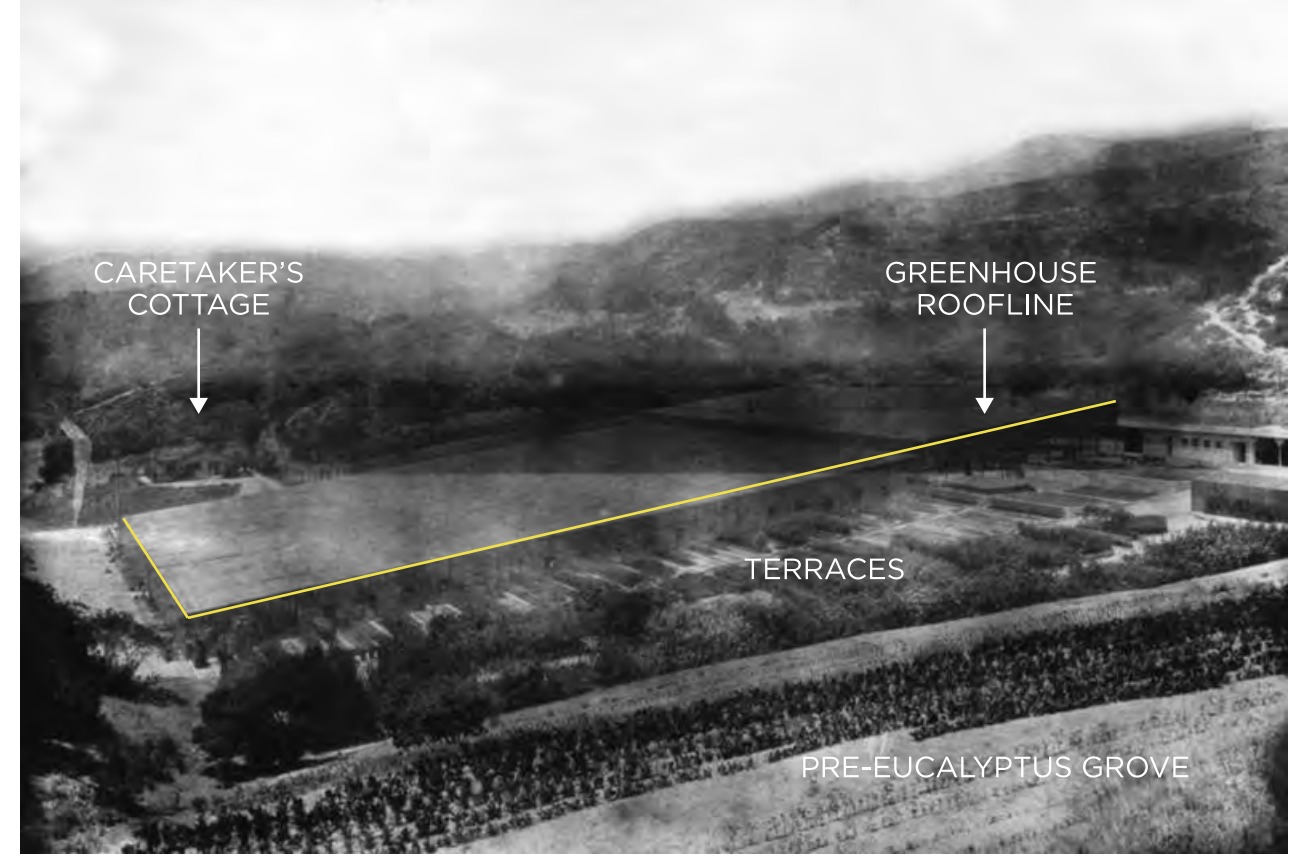
Situated in a canyon at the southernmost border of Griffith Park, the remnants of Commonwealth Nursery endure, revealing just a glimpse of a majestic nursery that was, according to *The Los Angeles Times*, "made larger than any municipal undertaking of its kind in the country." Its purpose was clear: to locally produce all the trees, shrubs, and flowers for city parks and public buildings for the City of Los Angeles."



PLANTING TERRACES, 1929

- Established on May 26, 1928
- Opened two years before the Greek Theater
- Operated on nearly 12 acres
- Produced 500,000 plants within its first year
- Fully staffed with 19 men from the Los Angeles Parks Dept., as it was known then, and 26 WPA men and women workers
- For 50 years, the original greenhouse roofs were able to harness and store rainwater for use six months out of the year
- Has always concentrated on growing native plants

- Featured:**
- acres of growing beds
 - a one-acre lath house
 - a general office
 - a caretaker's cottage
 - a research library
 - storage rooms for bulbs/tubers
 - bins for materials
 - a manufacturing area for pots
 - two large greenhouses



(1929) The grounds of the extensive nursery, with neatly managed rows set in the hills of Griffith Park.

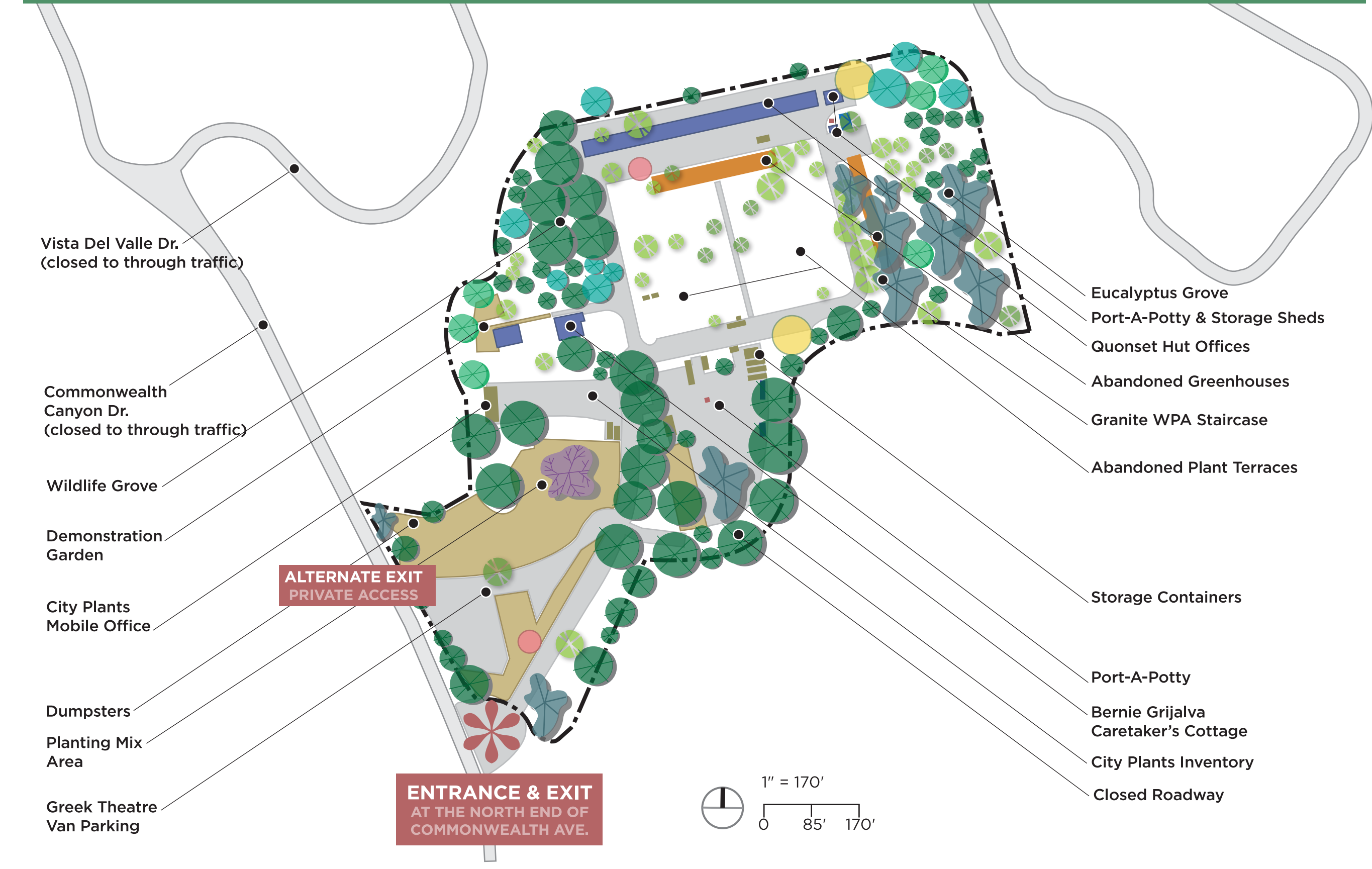


(1929) A view of part of the City Nursery in Griffith Park — a section of the terraced propagation beds.

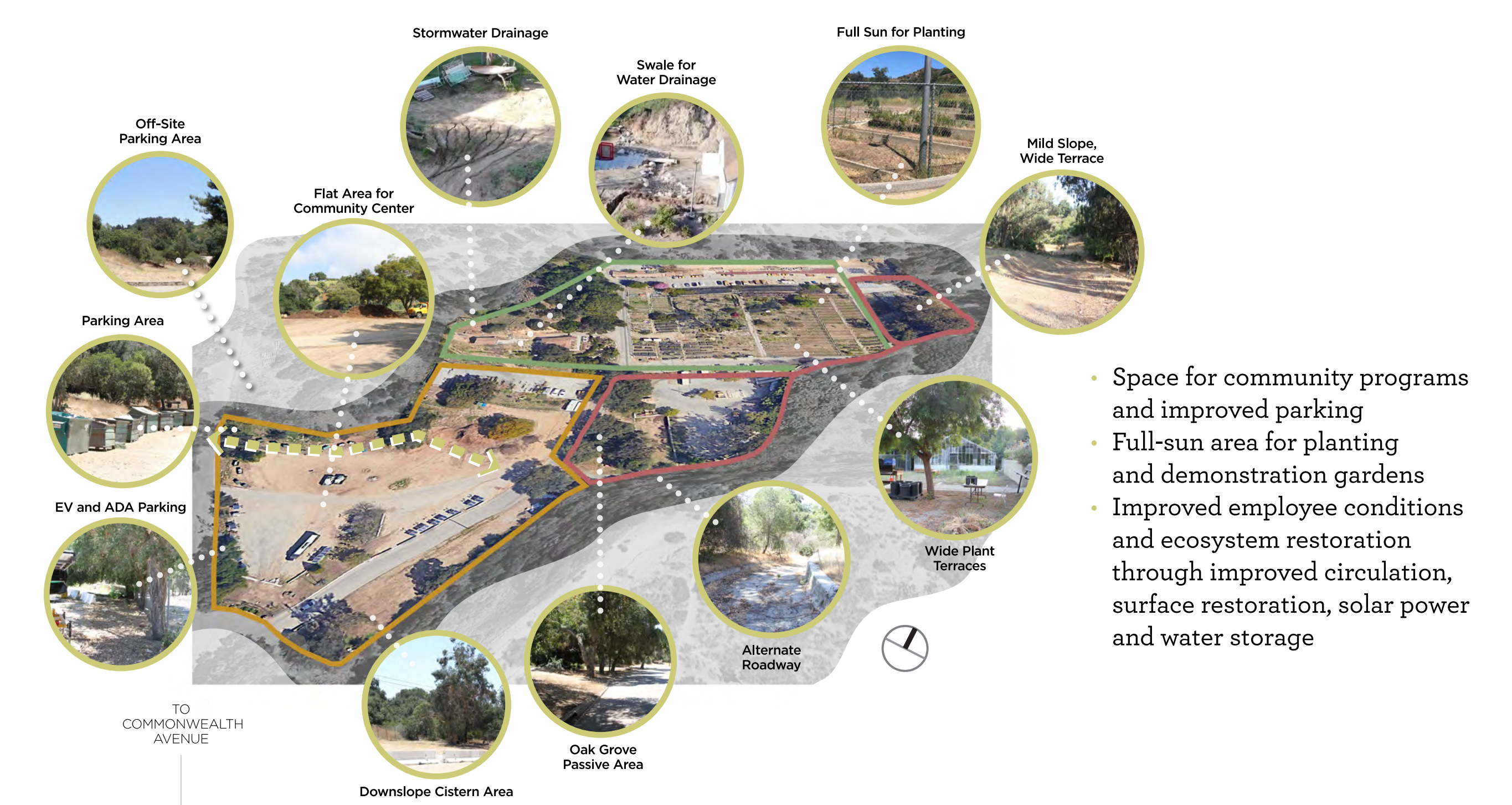


(2022) Plant propagation terraces today

EXISTING CONDITIONS



OPPORTUNITIES



- Space for community programs and improved parking
- Full-sun area for planting and demonstration gardens
- Improved employee conditions and ecosystem restoration through improved circulation, surface restoration, solar power and water storage

CONSTRAINTS



- Lack of community access
- Lack of water storage and planting infrastructure
- Poor drainage, worker conditions and no ecological stewardship

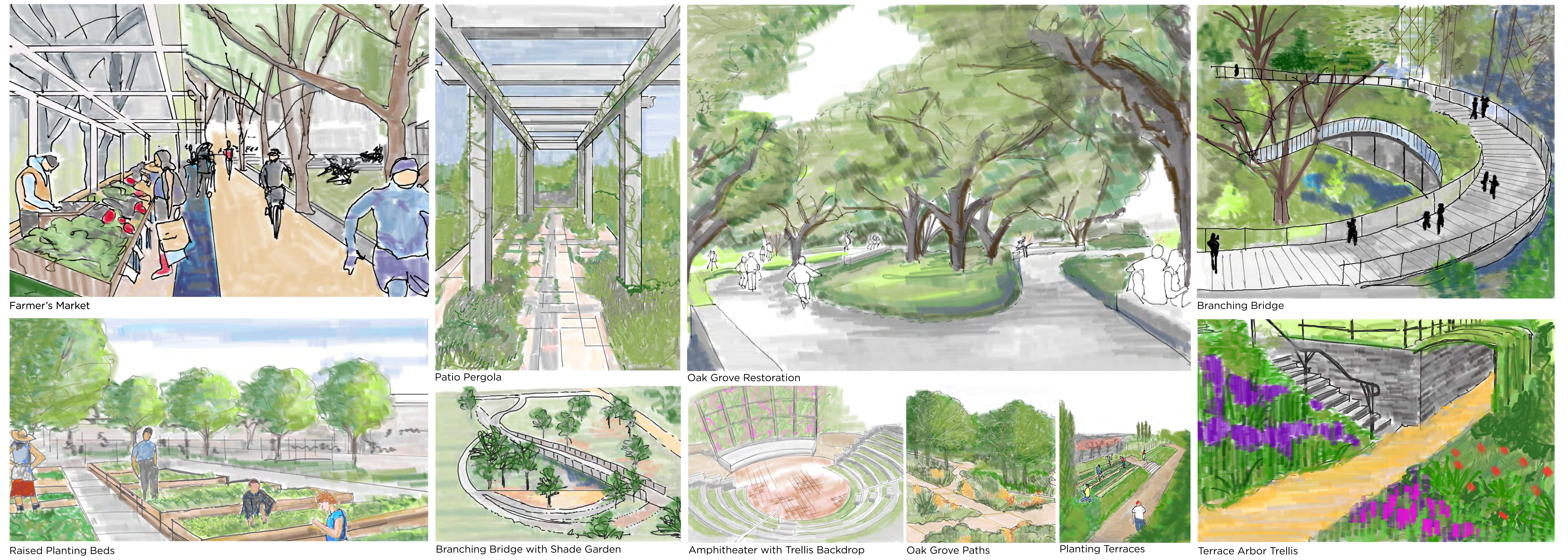
DESIGN METAPHOR

TRELLIS is a French word related to woven fabrics (three-ply), and how a trellis looks. The material, usually a type of wood, is criss-crossed into a latticework. The purpose of the trellis is to support climbing plants, which can't stand straight like a tree or houseplant. A trellis can also be used for a shade structure, as a border or fence, or a huge architectural statement. **PEOPLE, PLANTS** and **PURPOSE** are the three interweaving concepts that support and create the structure for my site.



Trellis Clockwise: Trellage detail, Pergola with Pagoda Trellis, Galvanized Trellis Railings, Espalier Fence Trellis, Wood Fence Trellis

CONCEPT SKETCHES



CONCEPT ONE BRANCHING BRIDGE

CONCEPT TWO TRELLIS WHIRLPOOLS

CONCEPT THREE PERGOLAS



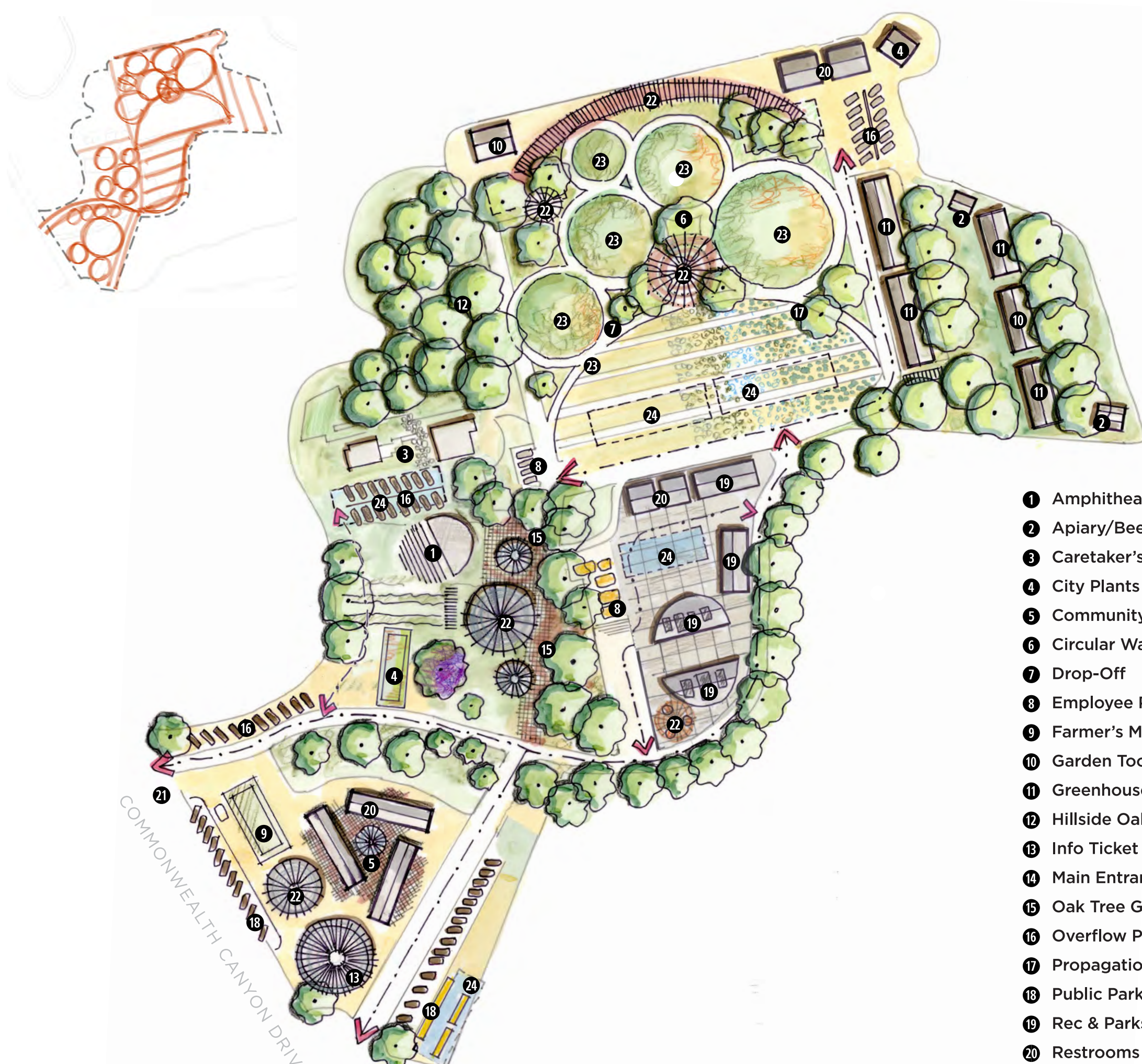
- 1 Amphitheater
- 2 Apiary/Beezantium/Bee Harbors
- 3 Caretaker's Cottage & Garage Garden
- 4 City Plants Inventory & Office
- 5 Community Center/Marketplace
- 6 Drop-Off
- 7 Elevated Walkway/Bridge
- 8 Employee Parking
- 9 Farmer's Market/Plant Giveaway Area
- 10 Garden Tool Shed
- 11 Greenhouse
- 12 Hillside Oak Grove
- 13 Info Ticket Booth
- 14 Main Entrance/Exit
- 15 Oak Tree Garden
- 16 Overflow Parking
- 17 Propagation Terraces
- 18 Public Parking w/EV Charging
- 19 Rec & Parks Garage & Office
- 20 Restrooms
- 21 Secondary Entrance/Exit
- 22 Shade Trellis with Tables/Seating
- 23 Themed Walk-Through Gardens
- 24 Underground Cisterns (TYP)

1" = 105'
0 105' 210' 315'



- 1 Amphitheater
- 2 Apiary/Beezantium/Bee Harbors
- 3 Caretaker's Cottage & Garage Garden
- 4 City Plants Inventory & Office
- 5 Community Center/Marketplace
- 6 Criss-Cross Walkway
- 7 Drop-Off
- 8 Employee Parking
- 9 Farmer's Market/Plant Giveaway Area
- 10 Garden Tool Shed
- 11 Greenhouse
- 12 Hillside Oak Grove
- 13 Info Ticket Booth
- 14 Main Entrance/Exit
- 15 Oak Tree Garden
- 16 Overflow Parking
- 17 Propagation Terraces
- 18 Public Parking w/EV Charging
- 19 Rec & Parks Garage & Office
- 20 Restrooms
- 21 Secondary Entrance/Exit
- 22 Shade Trellis with Tables/Seating
- 23 Themed Walk-Through Gardens
- 24 Underground Cisterns (TYP)

1" = 105'
0 105' 210' 315'

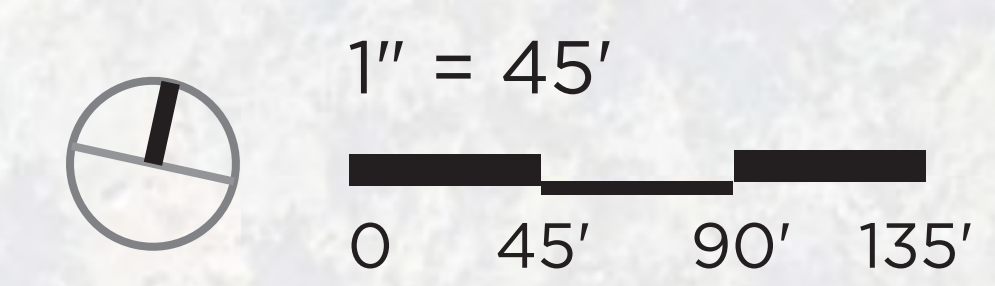


- 1 Amphitheater
- 2 Apiary/Beezantium/Bee Harbors
- 3 Caretaker's Cottage & Garage
- 4 City Plants Inventory & Office
- 5 Community Center/Marketplace
- 6 Circular Walkways with Trellis Patios
- 7 Drop-Off
- 8 Employee Parking
- 9 Farmer's Market/Plant Giveaway Area
- 10 Garden Tool Shed
- 11 Greenhouse
- 12 Hillside Oak Grove
- 13 Info Ticket Booth
- 14 Main Entrance/Exit
- 15 Oak Tree Garden
- 16 Overflow Parking
- 17 Propagation Terraces
- 18 Public Parking w/EV Charging
- 19 Rec & Parks Garage & Office
- 20 Restrooms
- 21 Secondary Entrance/Exit
- 22 Shade Trellis with Tables/Seating
- 23 Themed Walk-Through Gardens
- 24 Underground Cisterns (TYP)

1" = 105'
0 105' 210' 315'



- ① Amphitheater
- ② Apiary/Beezantium/Bee Harbors
- ③ Caretaker's Cottage, Garage and Garden
- ④ City Plants Inventory & Office
- ⑤ Community Center/Marketplace
- ⑥ Drop-Off
- ⑦ Elevated Walkway/Bridge
- ⑧ Employee Parking
- ⑨ Farmer's Market/Plant Giveaway Area
- ⑩ Garden Tool Shed
- ⑪ Greenhouses
- ⑫ Greeter/Information Kiosks
- ⑬ Hillside Oak Grove
- ⑭ Info Ticket Booth
- ⑮ Main Entrance/Exit
- ⑯ Oak Tree Garden
- ⑰ Overflow Parking
- ⑱ Propagation Terraces
- ⑲ Public Parking w/EV Charging
- ⑳ Rec & Parks Garage & Office
- ㉑ Restrooms
- ㉒ Secondary Entrance/Exit
- ㉓ Shade Trellis with Tables/Seating
- ㉔ Themed Walk-Through Gardens
- ㉕ Underground Cisterns

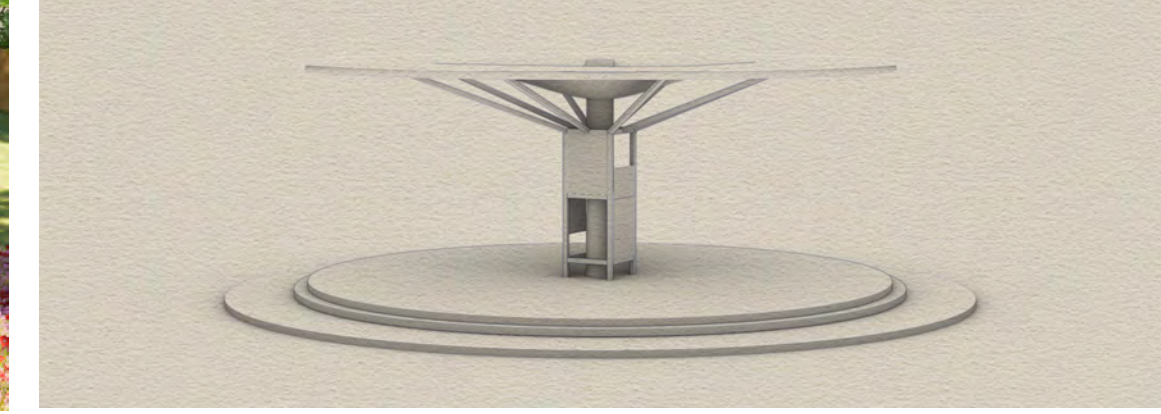
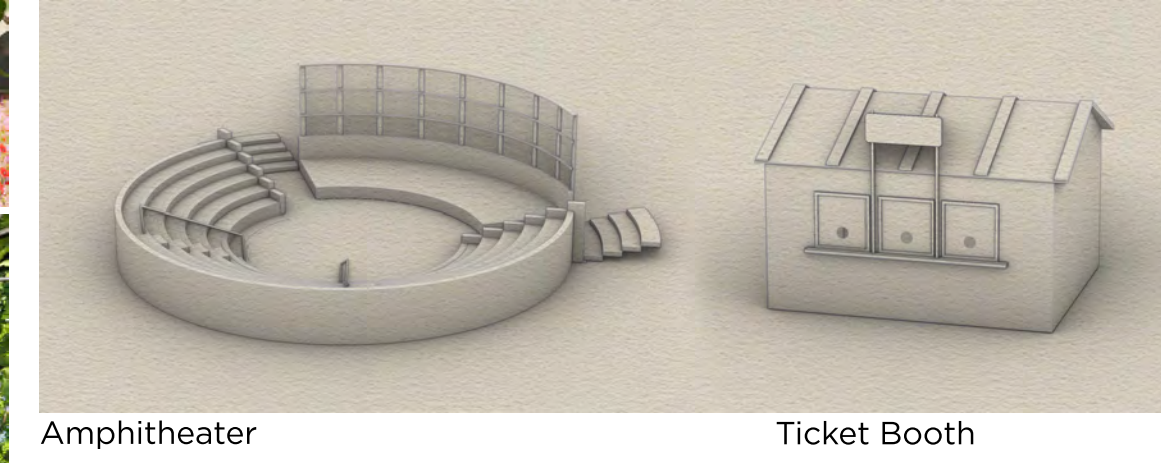
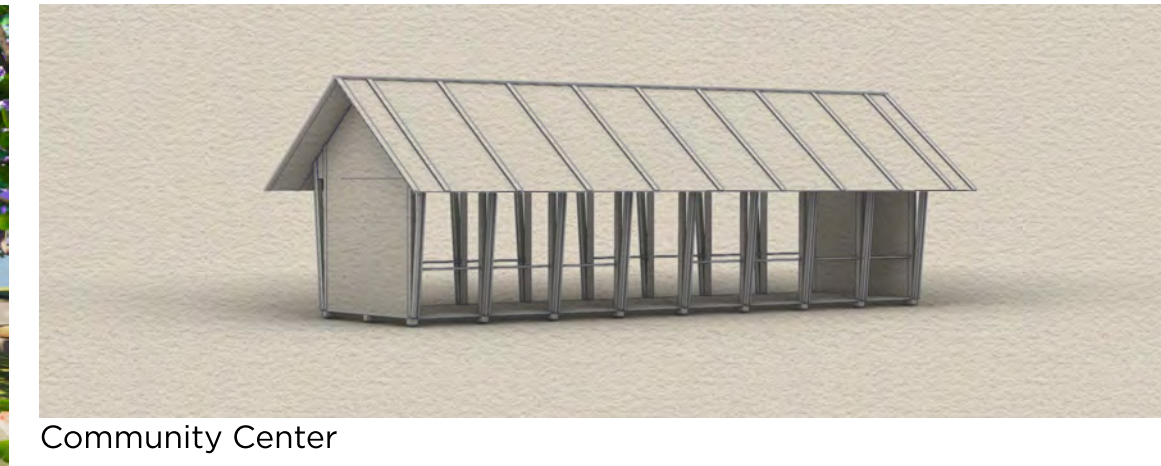
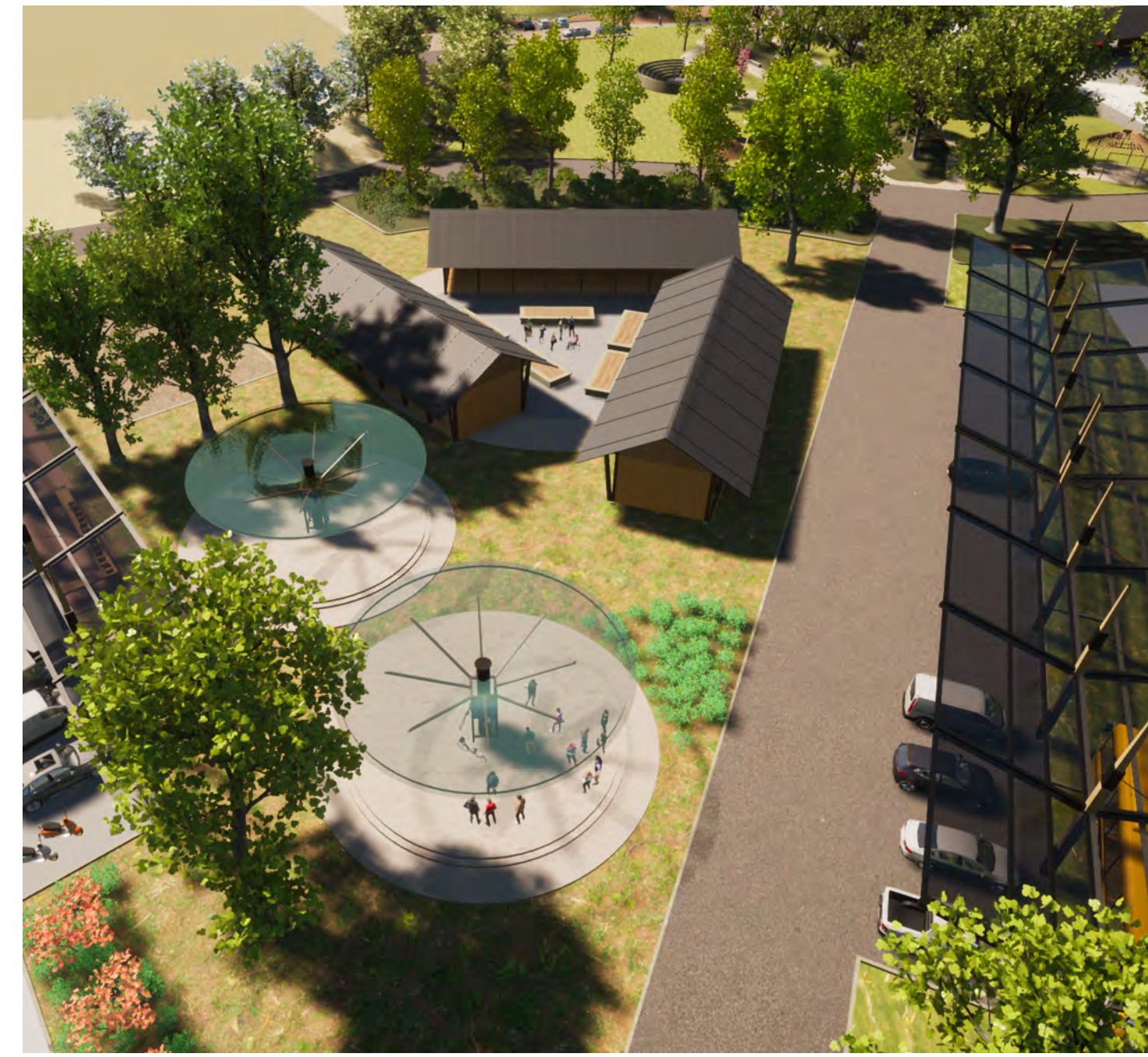


TO
COMMONWEALTH
AVENUE

PEOPLE



- 1 ADA Planters
- 2 Amphitheater
- 3 Bus Parking
- 4 City Plants Staging Area
- 5 Community Center/Marketplace
- 6 Drop-Off
- 7 Employee Parking
- 8 EV Parking with Solar Panels
- 9 Farmer's Market
- 10 Greeting Kiosks
- 11 Main Entrance
- 12 Mulch Giveaway
- 13 Oak Tree Garden
- 14 Overflow Parking
- 15 Pergola Patio
- 16 Restrooms
- 17 Second Entrance/Exit
- 18 Ticket Booth



Community Center

Amphitheater

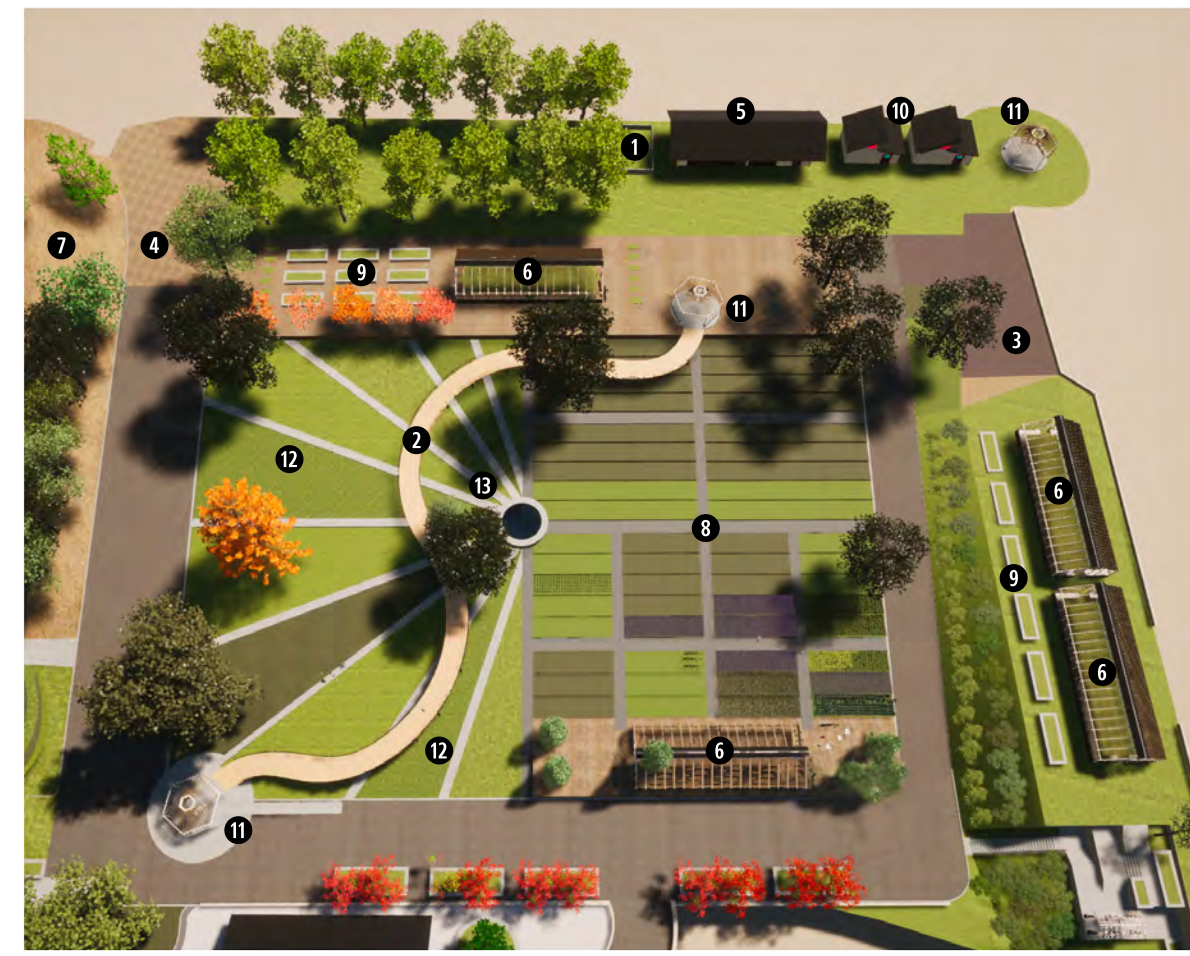
Ticket Booth

Greeter Kiosk

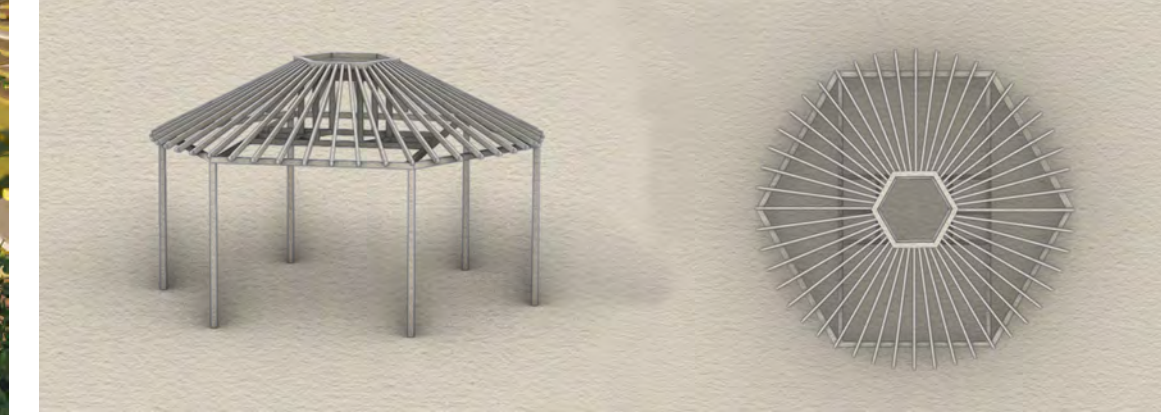
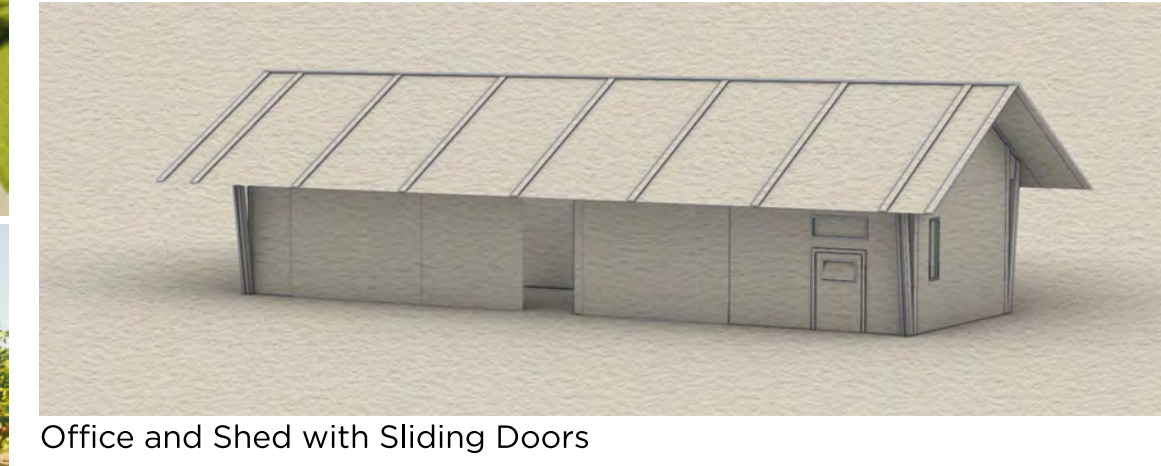
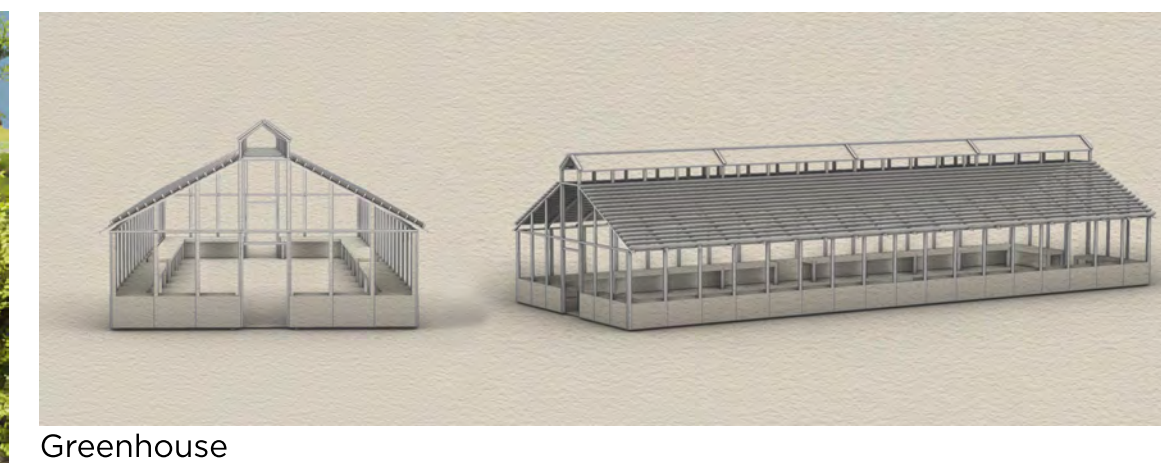


- Frangula californica* COFFEEBERRY
- Cercis occidentalis* WESTERN REDBUD
- Achillea millefolium* YARROW PARSNIP
- Manzanita
- Bougainvillea spectabilis* BOUGAINVILLEA
- Lippia nodiflora* L. "Karapa" KUSKUSHA
- Lesingia filaginifolia* "Silver Carpet" SILVER CARPET
- Fragaria chiloensis* BEACH STRAWBERRY
- Heteromeles arbutifolia* TOYON
- Ginkgo biloba* MAIDENHAIR
- Pistacia chinensis* CHINESE PISTACHE
- Sciurus griseus* WESTERN GRAY SQUIRREL
- Abelocoma californica* CALIFORNIA SCURRAY
- Platanus racemosa* CALIFORNIA SYCAMORE

PLANTS



- 1 Compost Storage
- 2 Elevated Walkway/Bridge
- 3 Employee Parking
- 4 Fire Road Access
- 5 Garden Tool Shed & Office
- 6 Greenhouses
- 7 Hillside Oak Grove
- 8 Propagation Terraces
- 9 Raised Planting Beds
- 10 Restrooms
- 11 Shade Trellis with Tables/Seating
- 12 Themed Walk-Through Gardens
- 13 Underground Cistern



Greenhouse

Office and Shed with Sliding Doors

Bridge Pergola

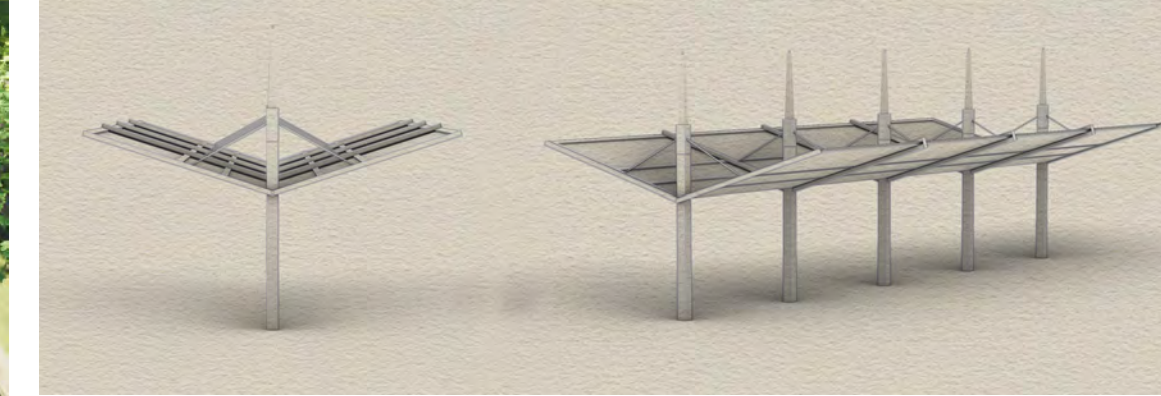
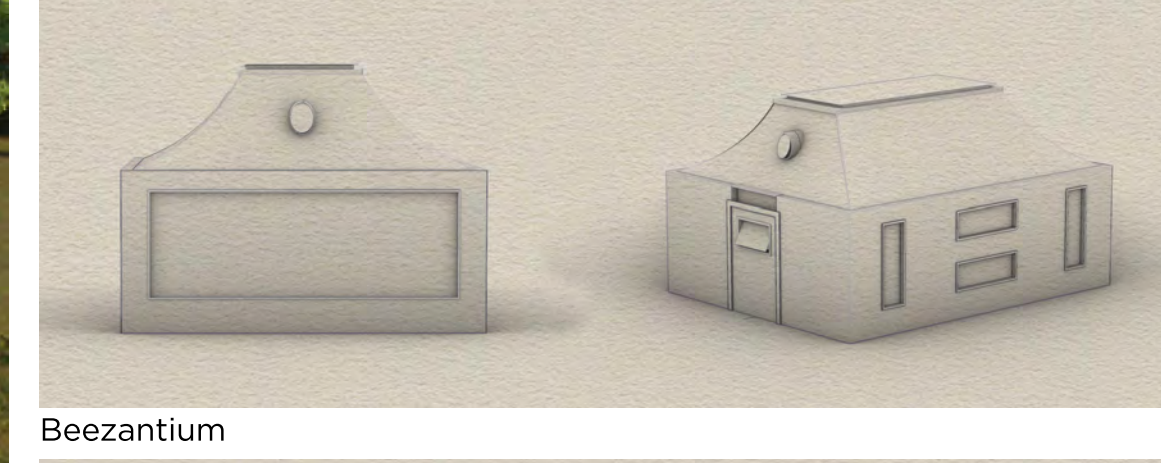
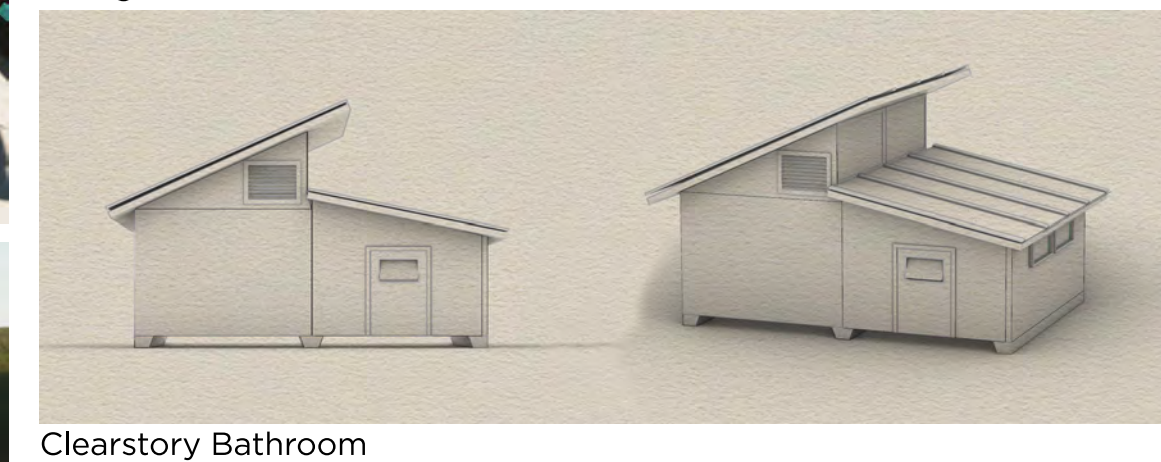
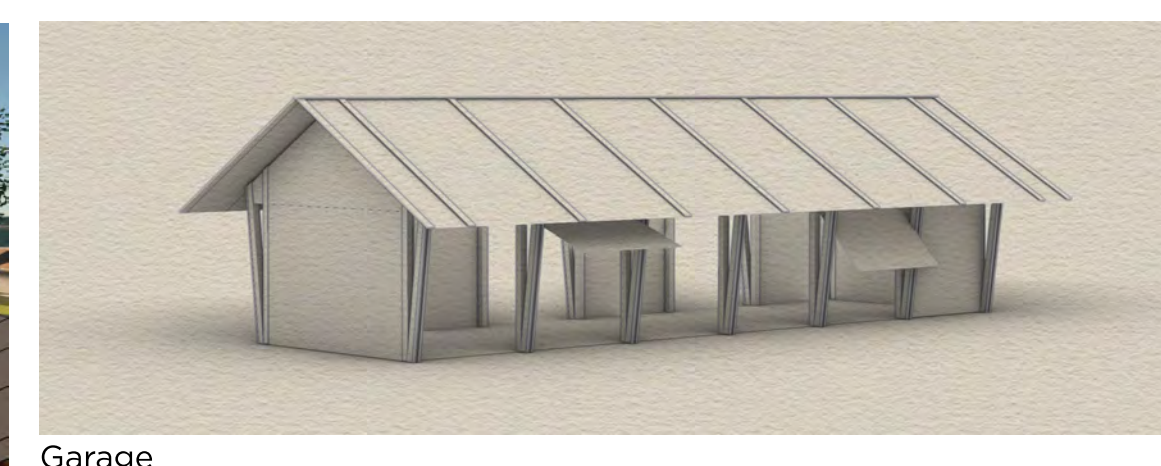


- Lotus corniculatus* BIRD'S FOOT TREFOIL
- Zauschneria latifolia viscosa* CALIFORNIA FUCHSIA
- Sphaeralcea ambigua* APRICOT MALLOW
- Eriogonum latifolium* COAST BUCKWHEAT
- Asclepias californica* CALIFORNIA BUCKEYE
- Haemorrhous purpureus* PURPLE FINCH
- Eschscholzia californica* CALIFORNIA POPPY
- Salvia Clevelandii* CLEVELAND SAGE
- Iris douglasiana* DOUGLAS IRIS
- Populus nigra* COTTONWOOD
- Umbellularia californica* BAY LAUREL
- Quercus agrifolia* COAST LIVE OAK

PURPOSE



- 1 Employee Citrus Garden
- 2 Employee Parking
- 3 Entrance/Exit
- 4 Solar Roofed Garden Tool Shed
- 5 Oak Tree Garden
- 6 Rec & Parks Garage & Office
- 7 Restrooms
- 8 Shade Trellis with Tables/Seating
- 9 Underground Cisterns



Garage

Clearstory Bathroom

Park & Rec Pergola

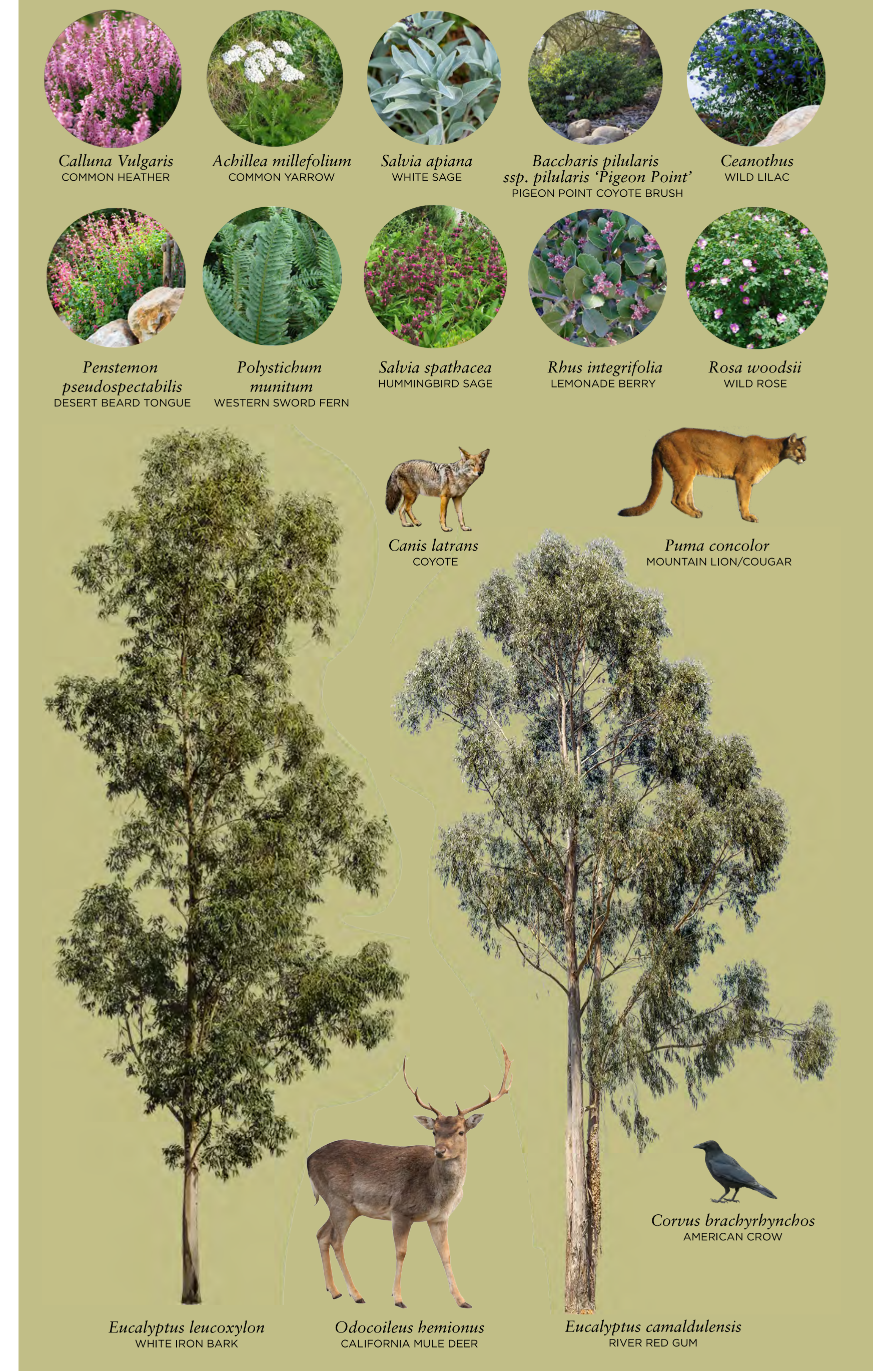
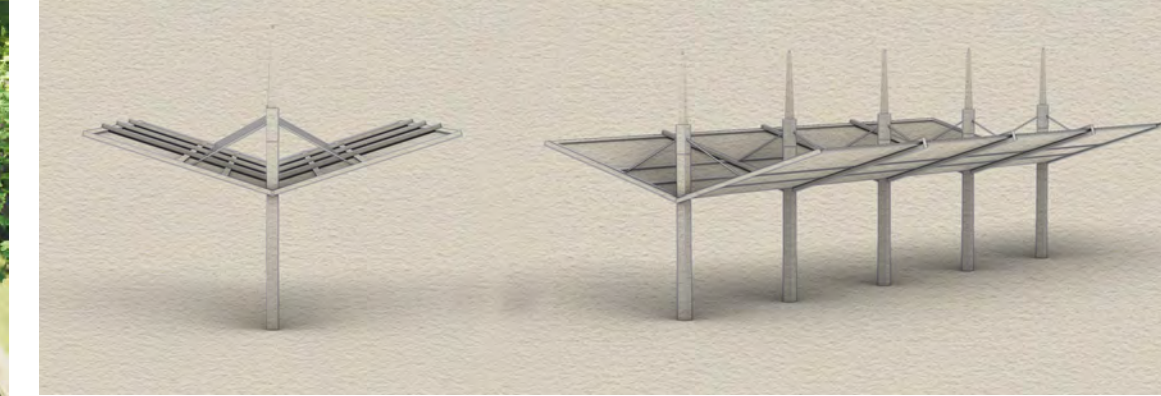
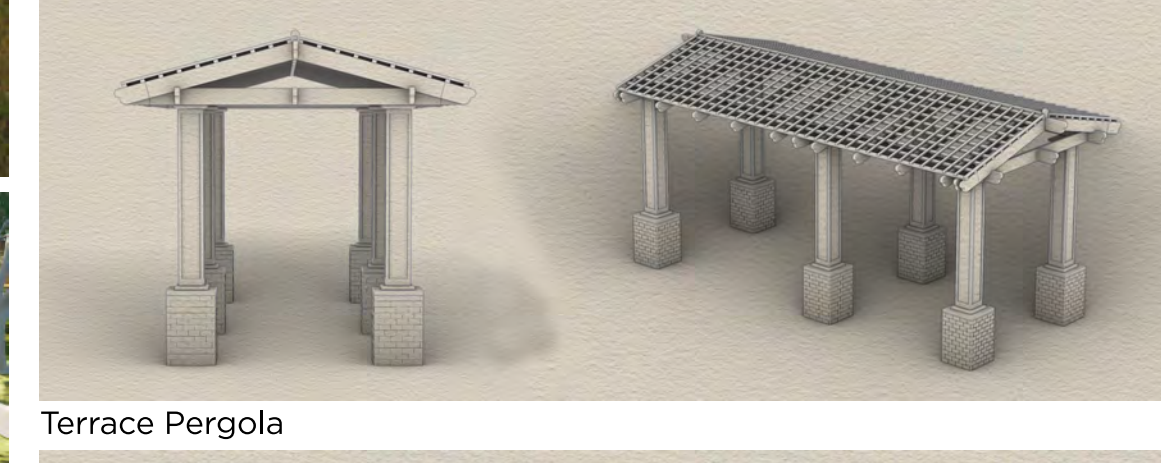
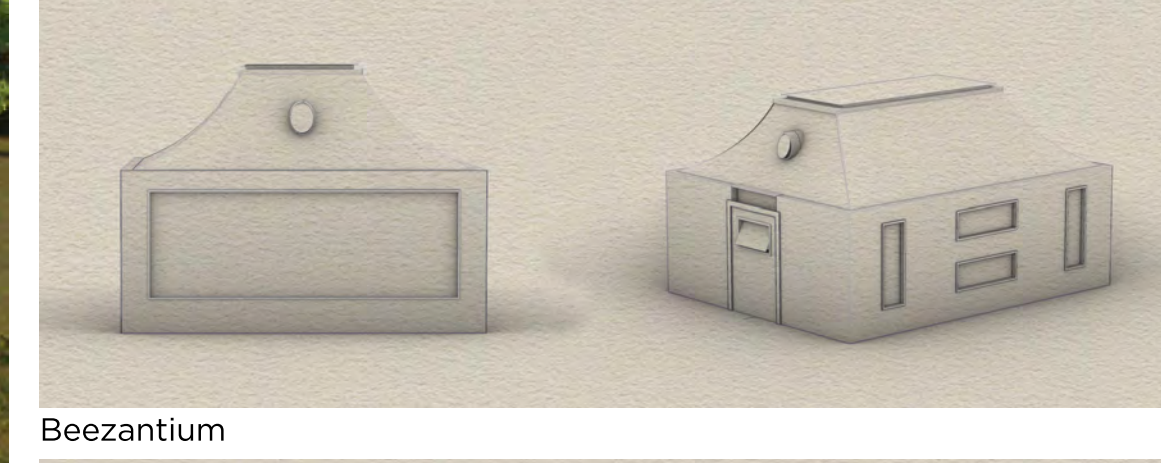
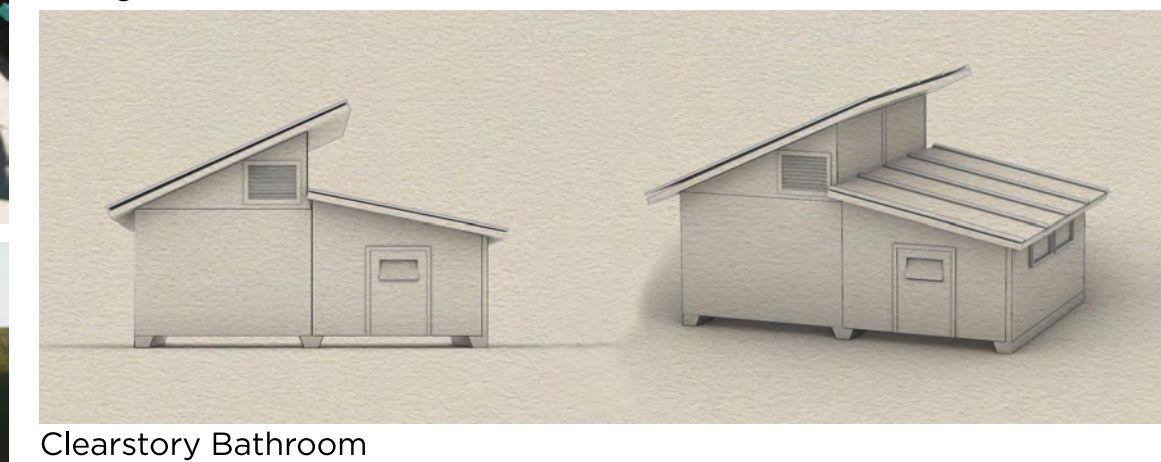
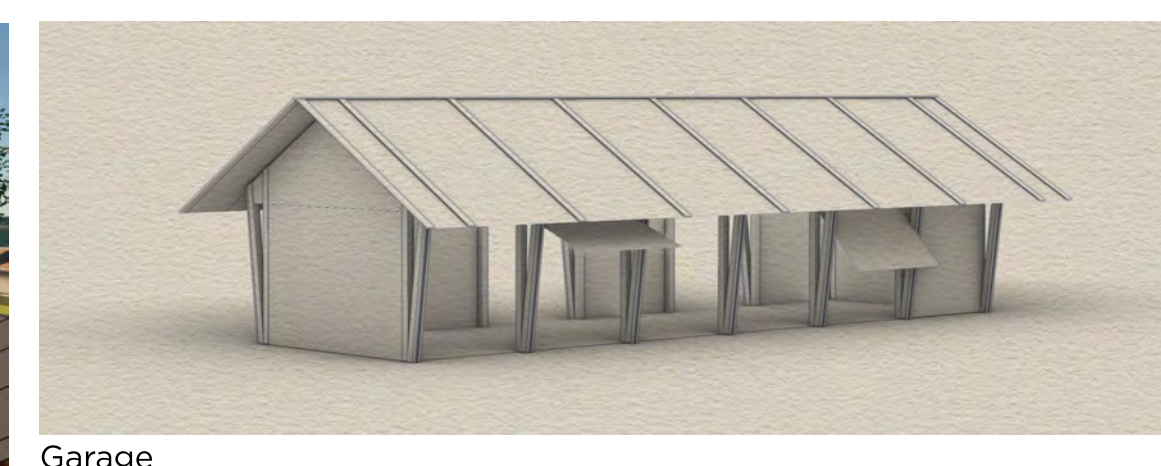
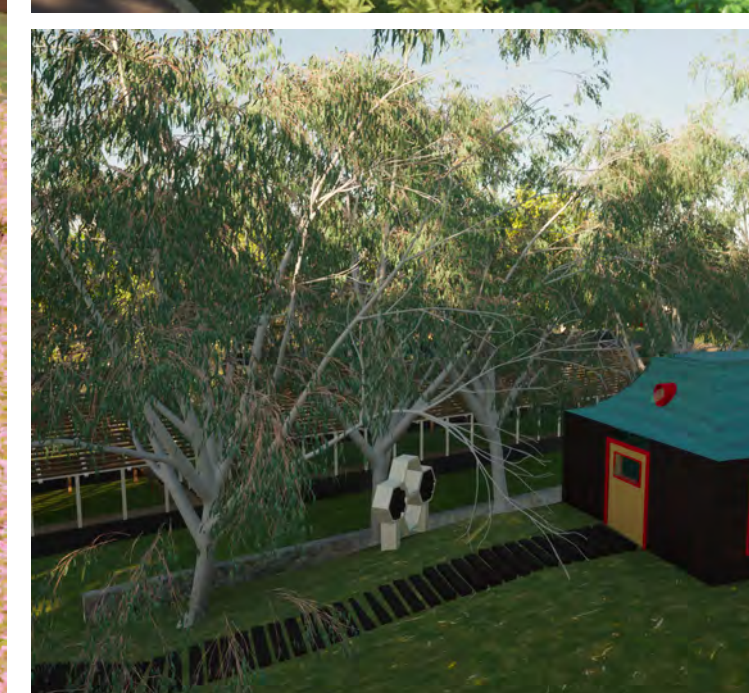
Beezantium

Terrace Pergola

Solar Parking



- 1 Apiary/Beezantium/Bee Harbors
- 2 Connecting Terrace
- 3 Eucalyptus Grove
- 4 Greenhouses
- 5 Raised Planting Beds
- 6 Shade Trellis with Tables, Seating
- 7 Underground Cistern
- 8 WPA Staircase



- Calluna Vulgaris* COMMON HEATHER
- Achillea millefolium* COMMON YARROW
- Salvia apiana* WHITE SAGE
- Raccharis pilularis* ssp. *pigeon Point* PIGEON POINT COYOTE BRUSH
- Ceanothus* WILD LILAC
- Penstemon pseudospectabilis* DESERT BEARD TONGUE
- Polystichum muntonii* WESTERN SWORD FERN
- Salvia spathulifera* HUMMINGBIRD SAGE
- Rhus integrifolia* LEMONADE BERRY
- Rosa woodsii* WILD ROSE
- Canis latrans* COYOTE
- Puma concolor* MOUNTAIN LION/COUGAR
- Escalypus leucocylon* WHITE IRON BARK
- Odocoileus hemionus* CALIFORNIA MALE DEER
- Escalypus camaldulensis* RIVER RED GUM
- Corvus brachyrhynchos* AMERICAN CROW